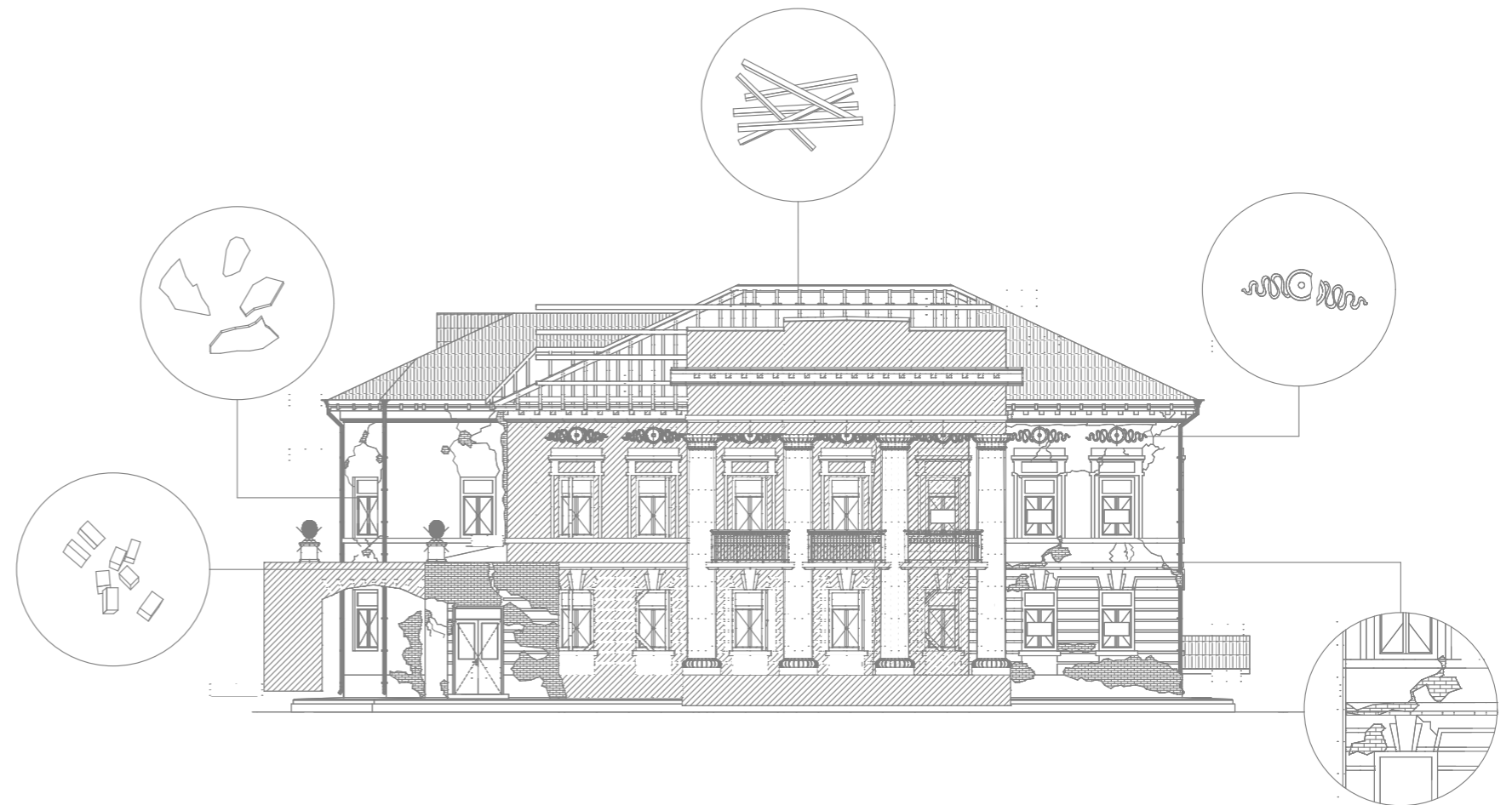


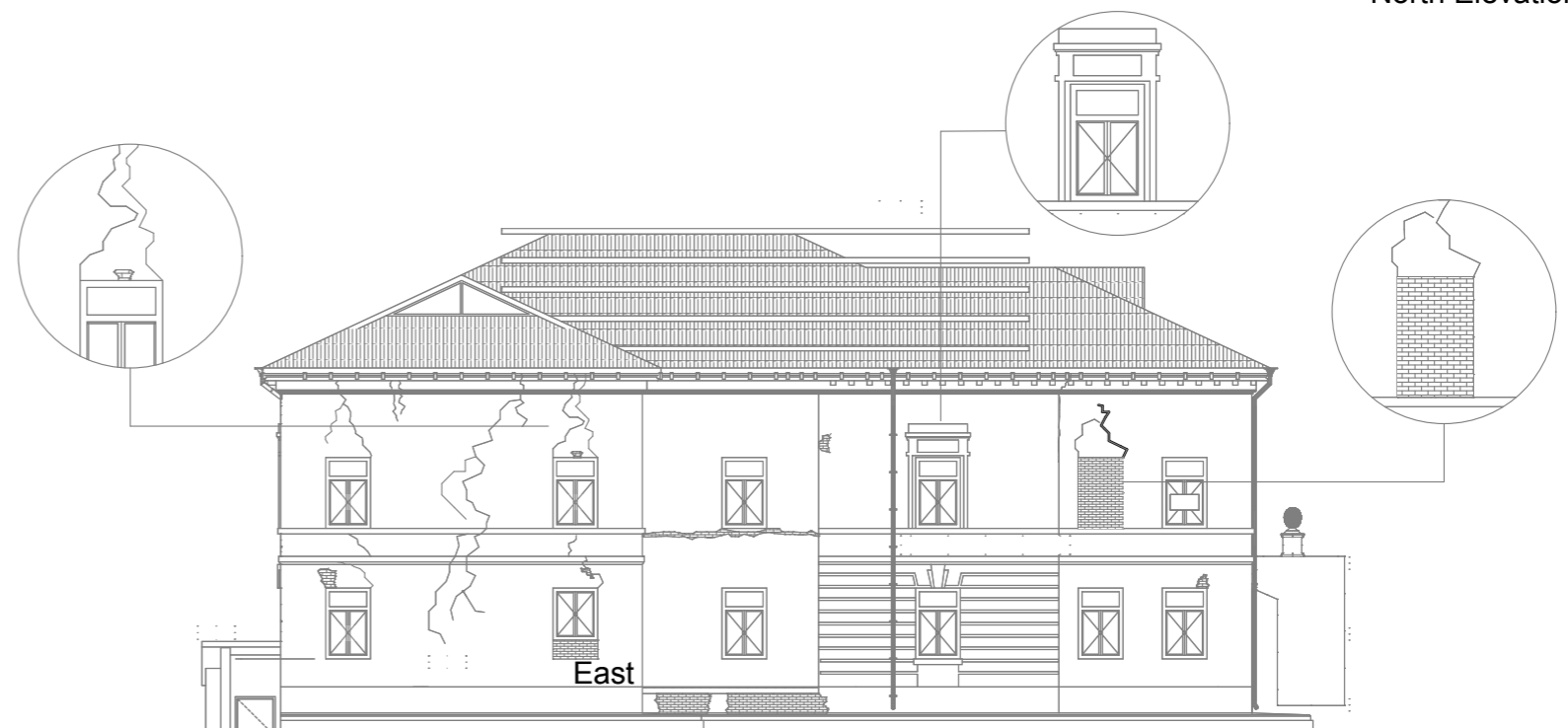
2 Renovation Strategy

The renovation of the Pavlov Manor must be guided by one central principle: to rebuild as accurately as possible, respecting the original appearance, techniques, and materials of the 1832 structure. The north facade has suffered the most severe damage. Its roof and windows are broken, and major reconstruction is required, including the rebuilding of interior walls and slabs.

In contrast, the south side presents a different set of challenges: cracks in the walls that must be carefully treated. Wherever possible, openings that were previously closed with bricks should be reopened to reverse later alterations and restore the building to its original state. The original ornaments around the windows should also be returned. An ongoing concern is the repeated stress caused by missile attacks, which constantly increases the extent of the cracks; therefore, cracks need to be treated regularly as part of a long-term maintenance plan. Throughout all interventions, reconstruction must take into full consideration the building's historic appearance, employing original construction techniques and materials to ensure the manor's heritage is preserved with integrity.



North Elevation 1:200



South Elevation 1:200