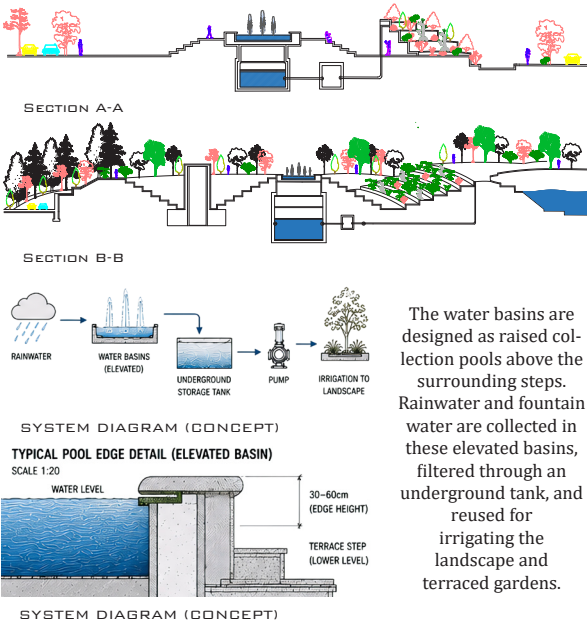


ARSENAL MEMORY PARK

Transforming Memory into Urban Life

PROJECT STATEMENT & CONCEPT

Arsenal Memory Park transforms a painful historical site into a living public landscape. The concept is based on turning memory into movement, where curved paths guide visitors from the preserved historical core toward water, gardens, and active social spaces. The old arsenal building remains as the symbolic heart of the project, while new landscape layers create healing, connection, and public life. Water acts as a symbol of renewal and continuity, linking the lake, fountains, rainwater basins, and terraced gardens. Through history, nature, water, and movement, the site becomes a shared urban sanctuary for remembrance and community life.



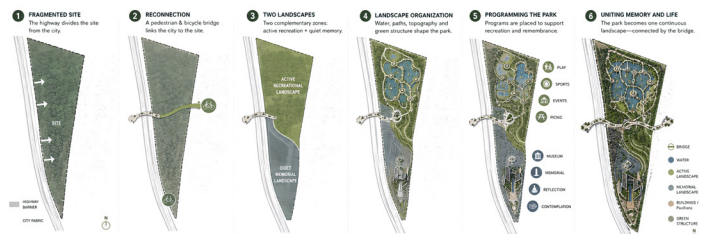
DESIGN INTENT

The design intent is to balance remembrance with public life. The project does not treat memory as a single monument, but distributes it through the landscape using paths, water, gardens, and gathering spaces. The preserved historical core remains the symbolic center, while new public programs bring movement and daily life to the site. Water, vegetation, and terraced landscapes create a sense of healing, continuity, and reconnection with the city.



SITE

The site is located in the former Arsenal area in Tucumán, Argentina, a place marked by historical trauma, mass graves, and collective memory. Instead of treating it as an empty urban land, the project approaches the site as a sensitive historical ground that requires remembrance and healing. Surrounded by roads, green areas, and open urban spaces, the site has the potential to become a public park. The preserved historical core becomes the main anchor, while new landscape layers, water elements, gardens, and public programs reconnect the site with the community. The design creates a gradual transition from memory and silence at the center to active public life at the edges.



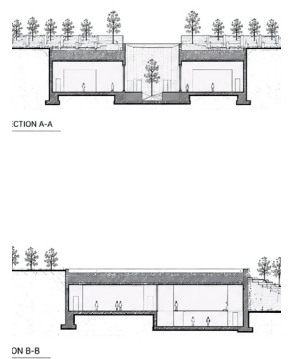
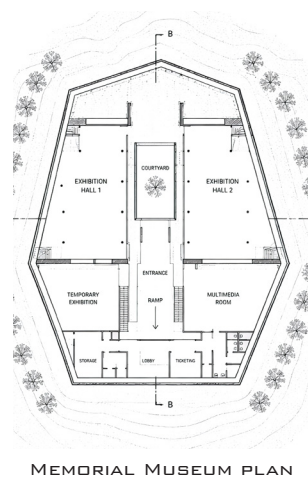
CONCEPT

The concept of Arsenal Memory Park is based on transforming a fragmented historical site into a connected public landscape. The main design idea begins with creating a pedestrian and bicycle bridge over the highway, linking one side of the city to the other and turning the park into an urban connector rather than an isolated memorial site. This bridge acts not only as a circulation element, but also as a spatial and symbolic transition. It guides people from the active urban side toward the deeper historical layers of the site. Through the landscape organization, the park is divided into two main zones: one side is designed for recreation, play, social activities, and everyday public life, while the other side is dedicated to memory, reflection, and the preserved historical identity of the Arsenal site. By separating these functions through landscape, movement, and level changes, the project creates a balance between public life and remembrance. The recreational areas support community activity and healing, while the memorial zone protects the emotional and historical value of the place. In this way, the park becomes a bridge between past and present, trauma and recovery, memory and



SPATIAL ORGANIZATION

The spatial organization of the Arsenal Memory Park is based on a gradual transition from memory to public life. Quiet memorial spaces, an underground museum, water ponds, a museum, gardens, playgrounds, sports spaces and café-restaurant areas are arranged around a central core. This creates a layered landscape where visitors can move from silence and memory to active public spaces.



UNDERGROUND MEMORIAL MUSEUM

The underground memorial museum forms the quiet and reflective core of the project. Its below-ground position creates a symbolic descent from the active public landscape into a deeper space of memory and silence. Natural light enters through roof openings, producing a contrast between darkness and light as a symbol of absence, remembrance, and hope. The museum connects the historical core with the new landscape, making memory part of the visitor's spatial journey.

