

GREEN SCREEN CINEMA (A SUSTAINABLE AND ECO-CONSCIOUS CINEMA)

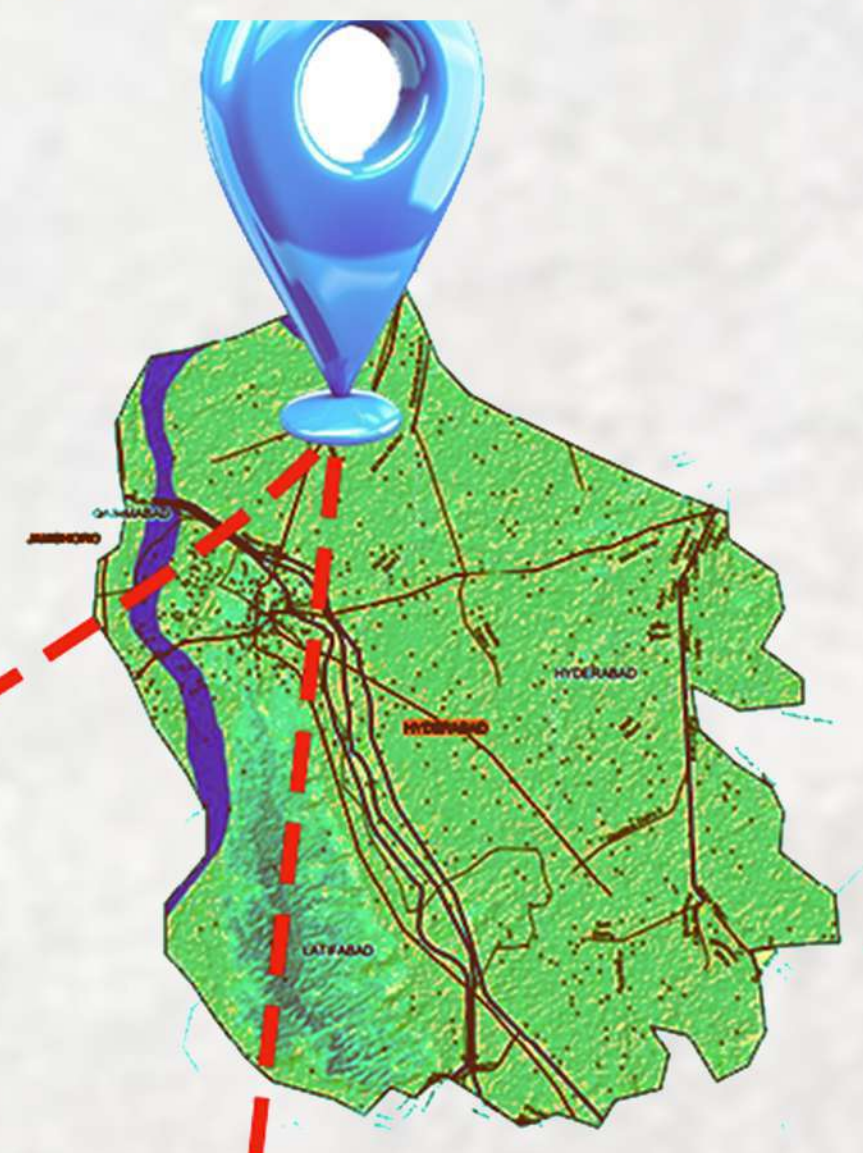
عبدالصمد جمالی

21AR061

پاکستان



سنڌ



حیدرآباد

INTRODUCTION

Green Screen Cinema is a sustainable and eco-conscious contemporary cinema that seamlessly blends classical architectural principles with modern environmental responsibility. Designed as a green landmark, the project integrates passive design strategies, energy-efficient systems, and sustainable materials while maintaining a powerful cinematic identity rooted in symmetry, proportion, and rhythmic arches. This eco-friendly cinema aims to minimize its environmental footprint without compromising the immersive experience of film, creating a thoughtful balance between architectural elegance and ecological awareness.



HIGHLY POPULATED AREA



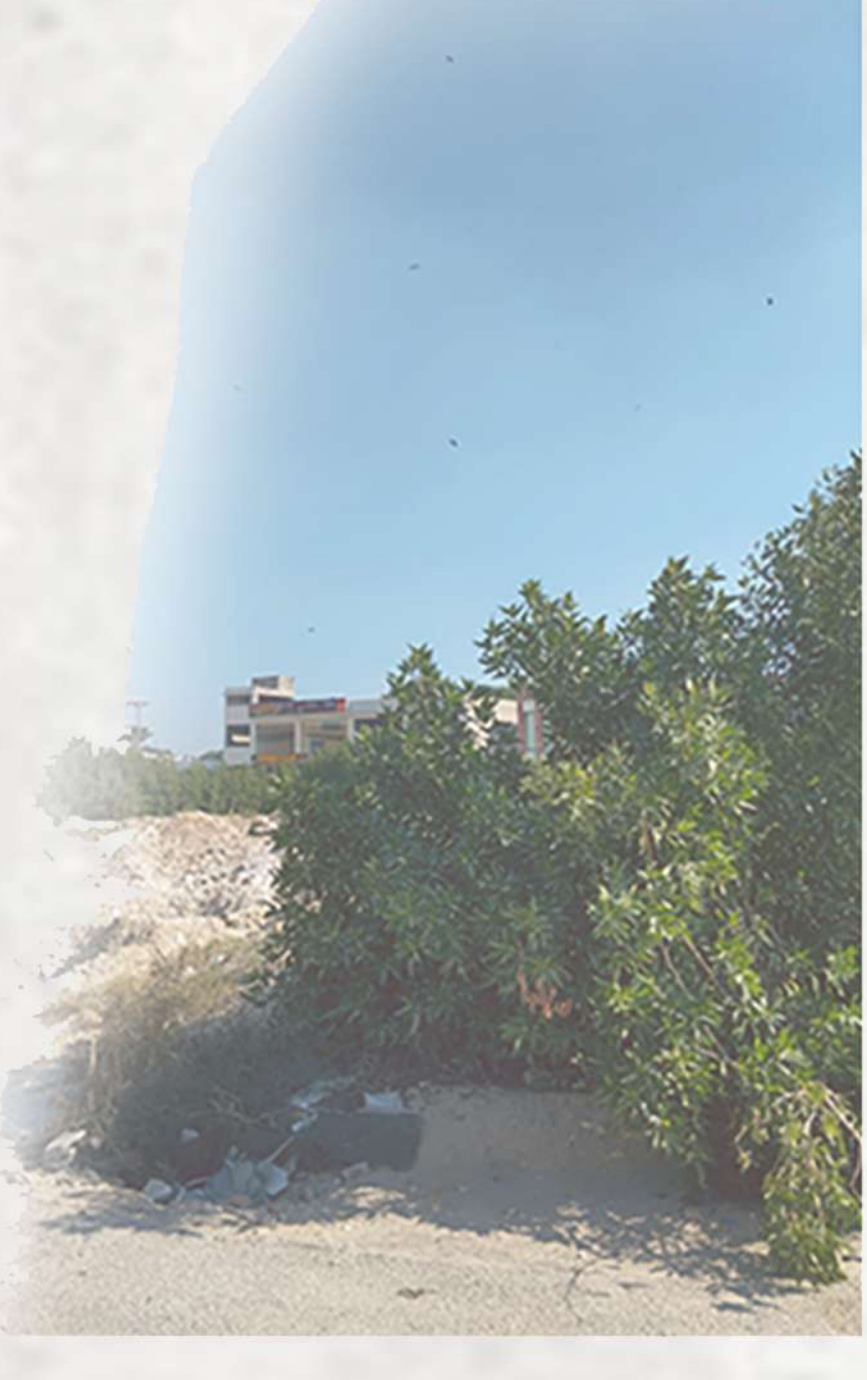
HIGH TRAFFIC ZONE
HEAVY TRAFFIC FLOW



GREEN AREA



WEAK STRUCTURE
ANTI EARTHQUAKE
STRUCTURE



Strengths

- * Prime urban location within a well-developed residential and commercial zone with strong population density.
- * Good accessibility via main Qasimabad roads connecting to central Hyderabad and surrounding districts.
- * Family-oriented neighborhood increasing demand for safe indoor recreational facilities.

Weaknesses

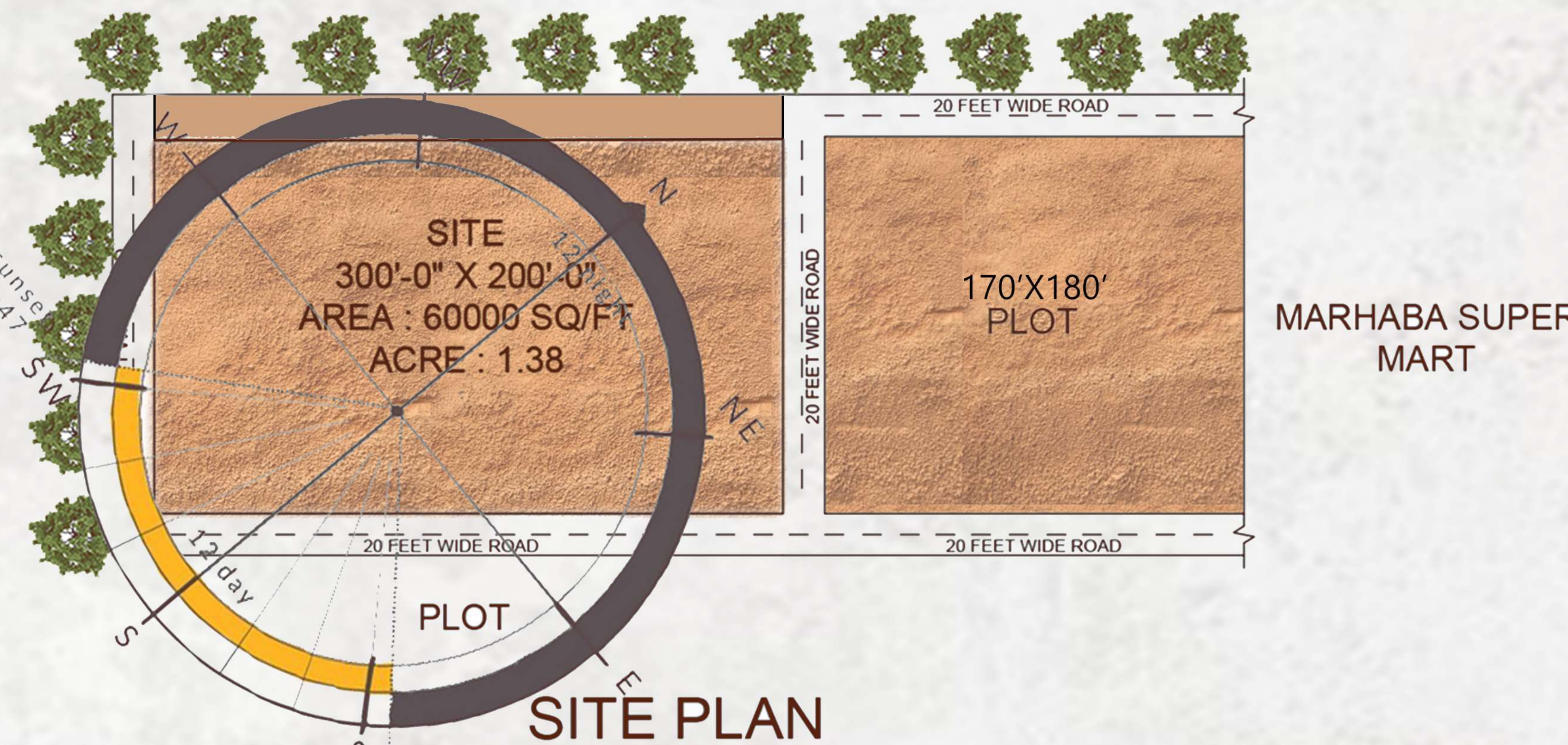
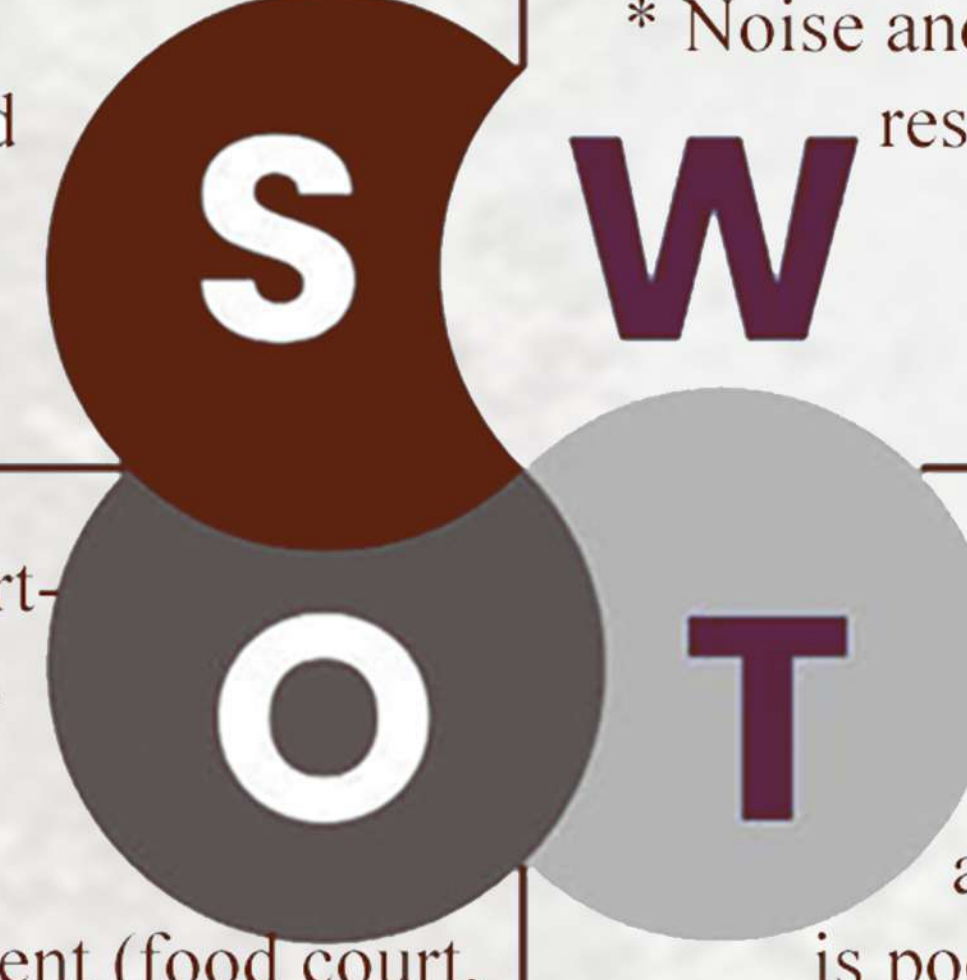
- * Traffic congestion during peak hours, especially evenings and weekends, affecting cinema entry/exit flow.
- * Limited parking availability typical of dense urban back-street locations.
- * Noise and privacy concerns due to surrounding residential developments.

Opportunities

- * High demand for modern entertainment due to youth population and limited premium cinema options.
- * Potential mixed-use development (food court, gaming zone, retail kiosks) increasing revenue streams.
- * Urban growth of Qasimabad ensures long-term commercial value and investment stability.

Threats

- * Urban heat and climate exposure, increasing cooling demand and operational costs.
- * Safety perception at night in back-street location, impacting family footfall if public realm is poorly lit.
- * Future densification of nearby plots, which may block visibility, ventilation, or expansion potential.



ANALYSIS

Location context: The site lies behind Marhaba Super Market in Qasimabad, a mixed-use urban zone with strong residential and commercial presence.

Accessibility & circulation: The plot has good connectivity through main and secondary roads with steady pedestrian and vehicular movement.

Land use & surroundings: Surrounding development consists mainly of residential housing, neighborhood retail, and small commercial services.

Climate & environmental factors: The site experiences high solar exposure and hot climate conditions requiring shading and thermal design strategies.

Socio-economic context: A dense middle-income and youth population generates demand for family-oriented entertainment facilities.

Infrastructure & services: Basic utilities are available, though peak-hour traffic and parking demand may stress existing infrastructure.

Opportunities identified: The location offers potential to create a local entertainment landmark supported by nearby commercial activity and nighttime vibrancy.

LANDMARKS



AGHA KHAN CENTRE



KFC



QASIM BANQUET



PSO

CONCEPT

The design reinterprets the timeless principles of Classical Architecture symmetry, proportion, hierarchy, and rhythmic arches into a modern cinema. Classical grandeur and order are translated into clean, contemporary forms, creating a powerful yet elegant cinematic landmark. This fusion honors architectural heritage while embracing the dynamic spirit of modern entertainment, resulting in a contemporary temple of spectacle.



CLASSICAL ARCHITECTURE

Classical Architecture is defined by its pursuit of harmony, order, and ideal proportion, prominently featuring rhythmic arches, symmetry, balance, and hierarchical composition. It embodies timeless values of clarity, rationality, and monumental dignity, using elements such as columns, arches, pediments, and rhythmic repetition to create powerful and enduring architectural expressions.

RE-INTERPRET
ARCHES FROM CLASSICAL
ARCHITECTURE



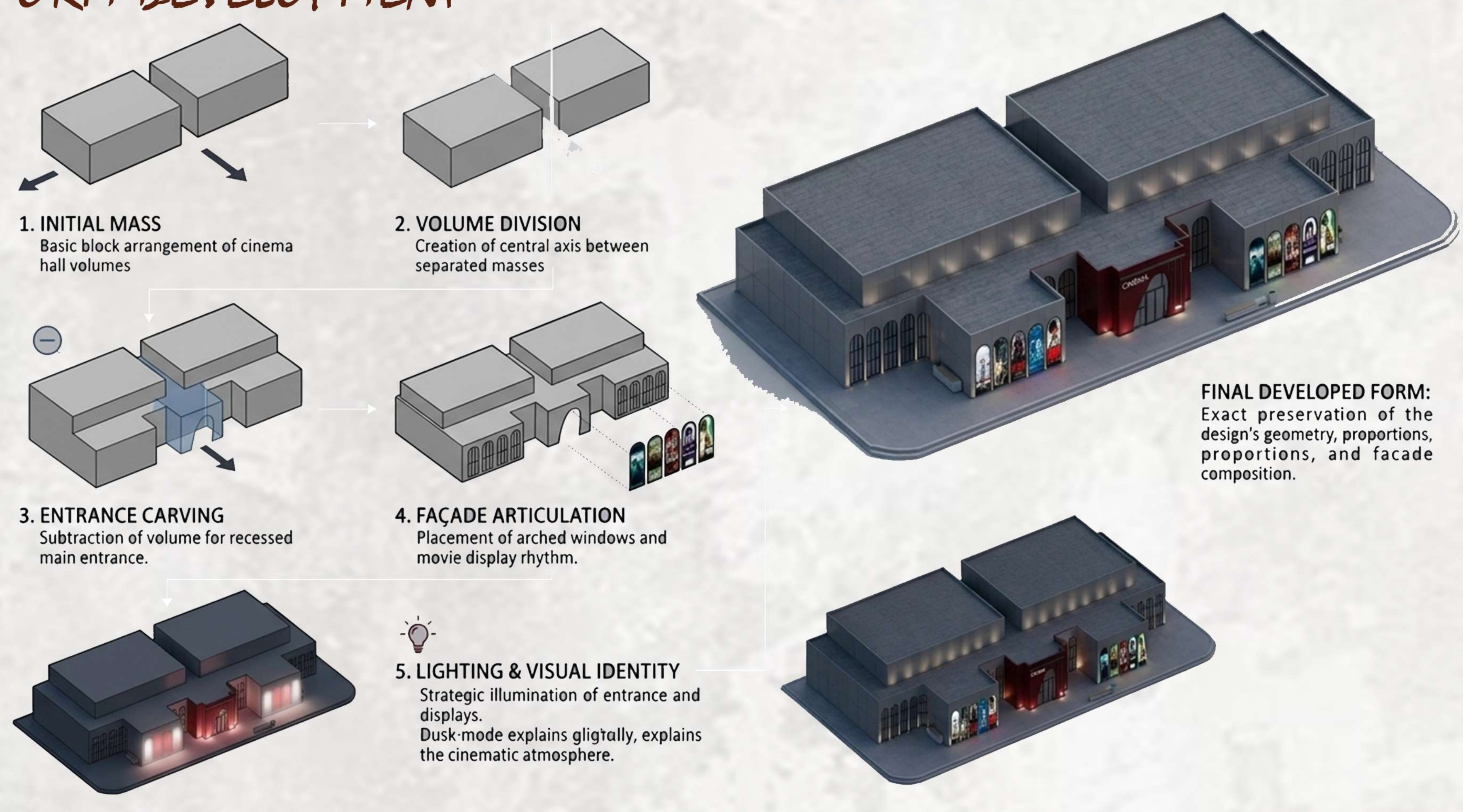
SUBJECT TEACHER:
AR : MAHJABEEN MEMON

GREEN SCREEN CINEMA (A SUSTAINABLE AND ECO-CONSCIOUS CINEMA)

عبدالصمد جمال

21AR061

FORM DEVELOPMENT

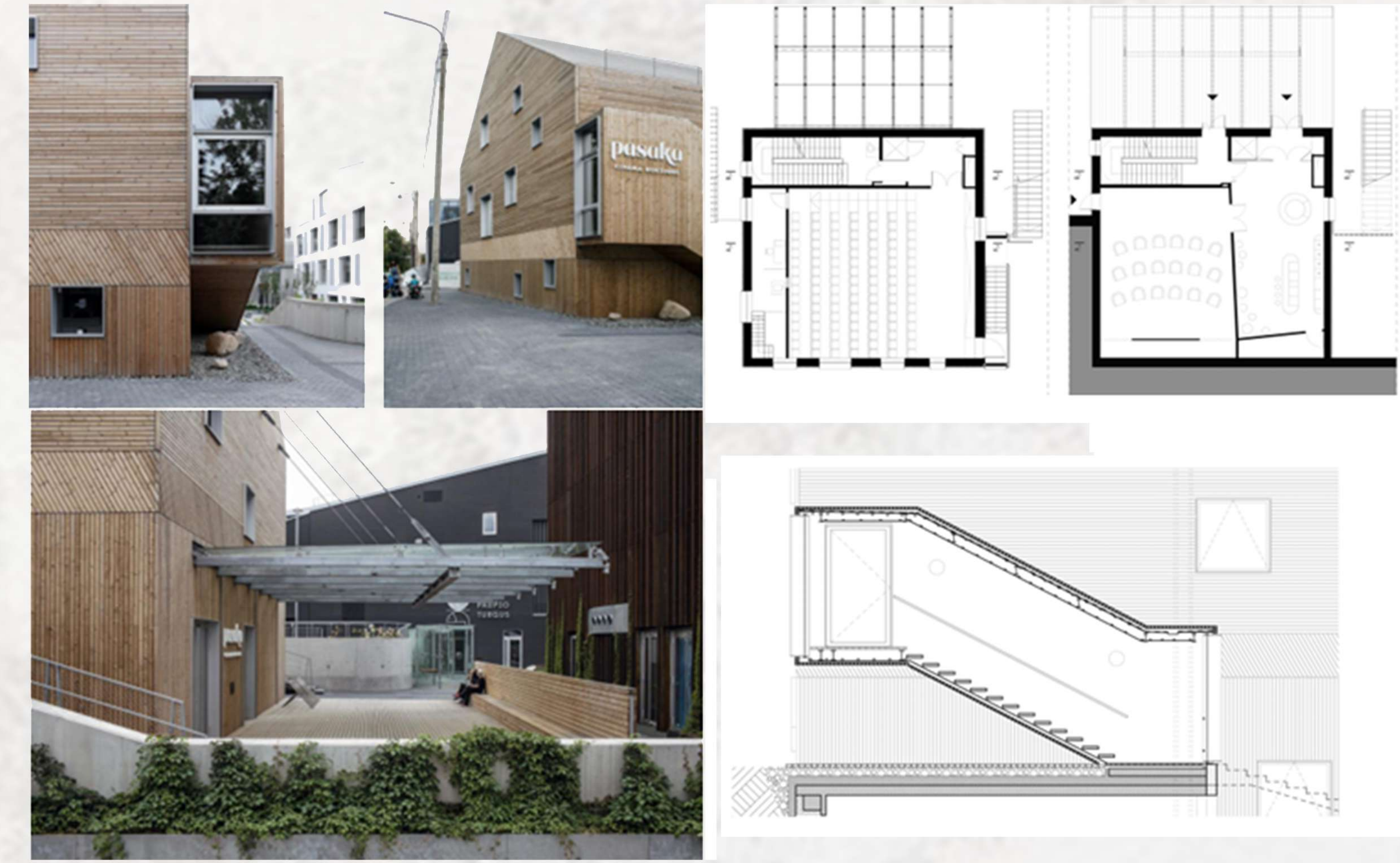


CASE STUDY OF PASAKA CINEMA HOUSE

Project Details
 Architect: Audrius Ambrasas Architects
 Location: Vilnius, Lithuania
 Year: 2020
 Area: 558 m²
 Project Type: Cinema / Cultural Building
 Source: ArchDaily

Project Introduction

PASAKA Cinema House is a contemporary cinema building located in the Paupys quarter of Vilnius, part of a larger urban renewal project converting an old industrial area into mixed use urban space. The design respects the historical context by preserving the urban fabric and referencing local architectural traditions. The cinema aims to balance a modern architectural expression with a warm, inviting atmosphere, creating a building that is both functional and culturally meaningful.

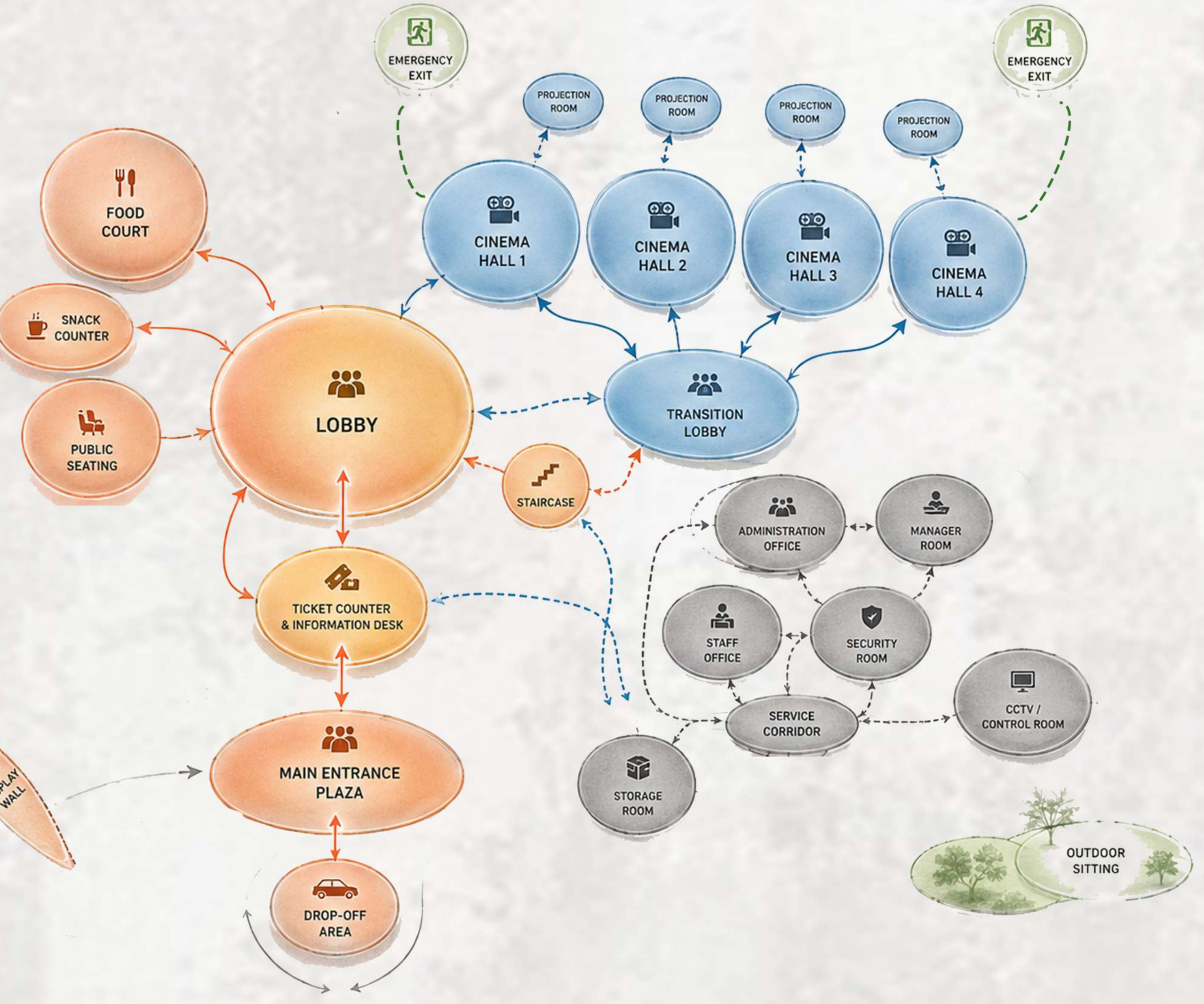


BUBBLE DIAGRAM AND ZONING

CINEMA COMPLEX BUBBLE DIAGRAM

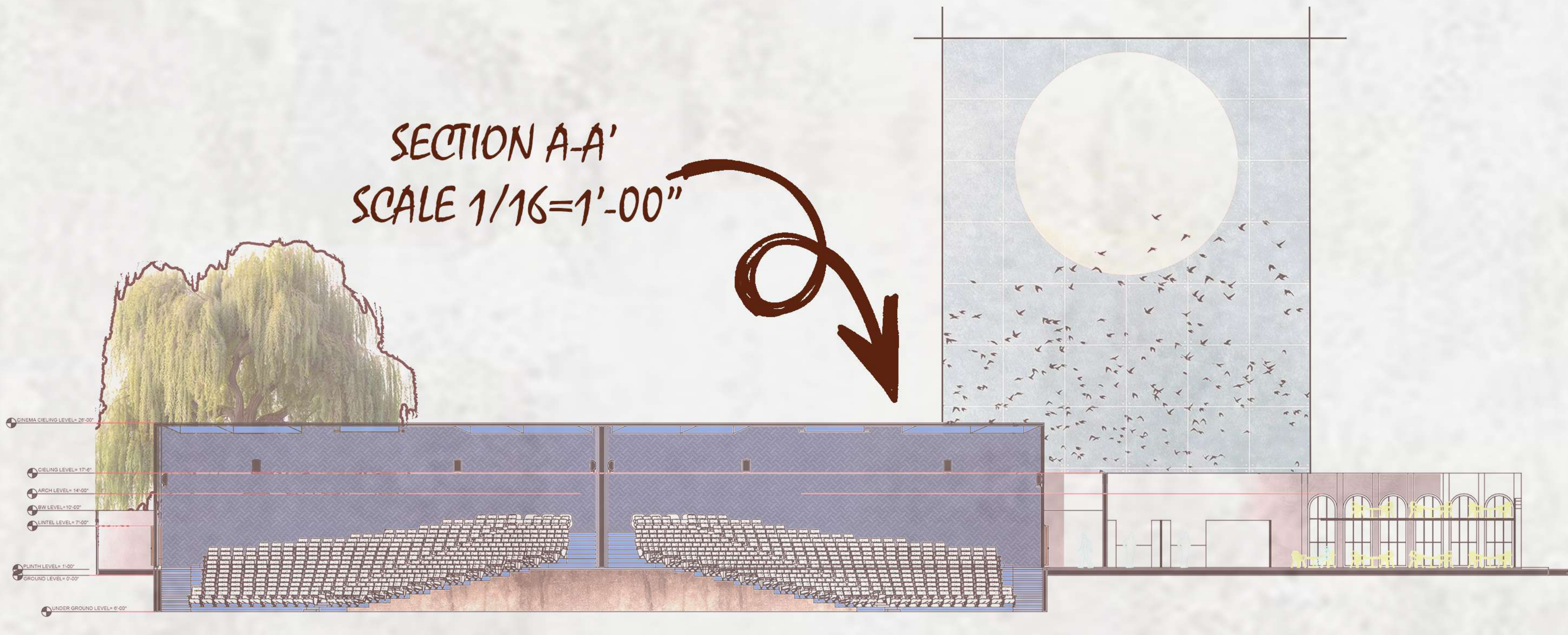
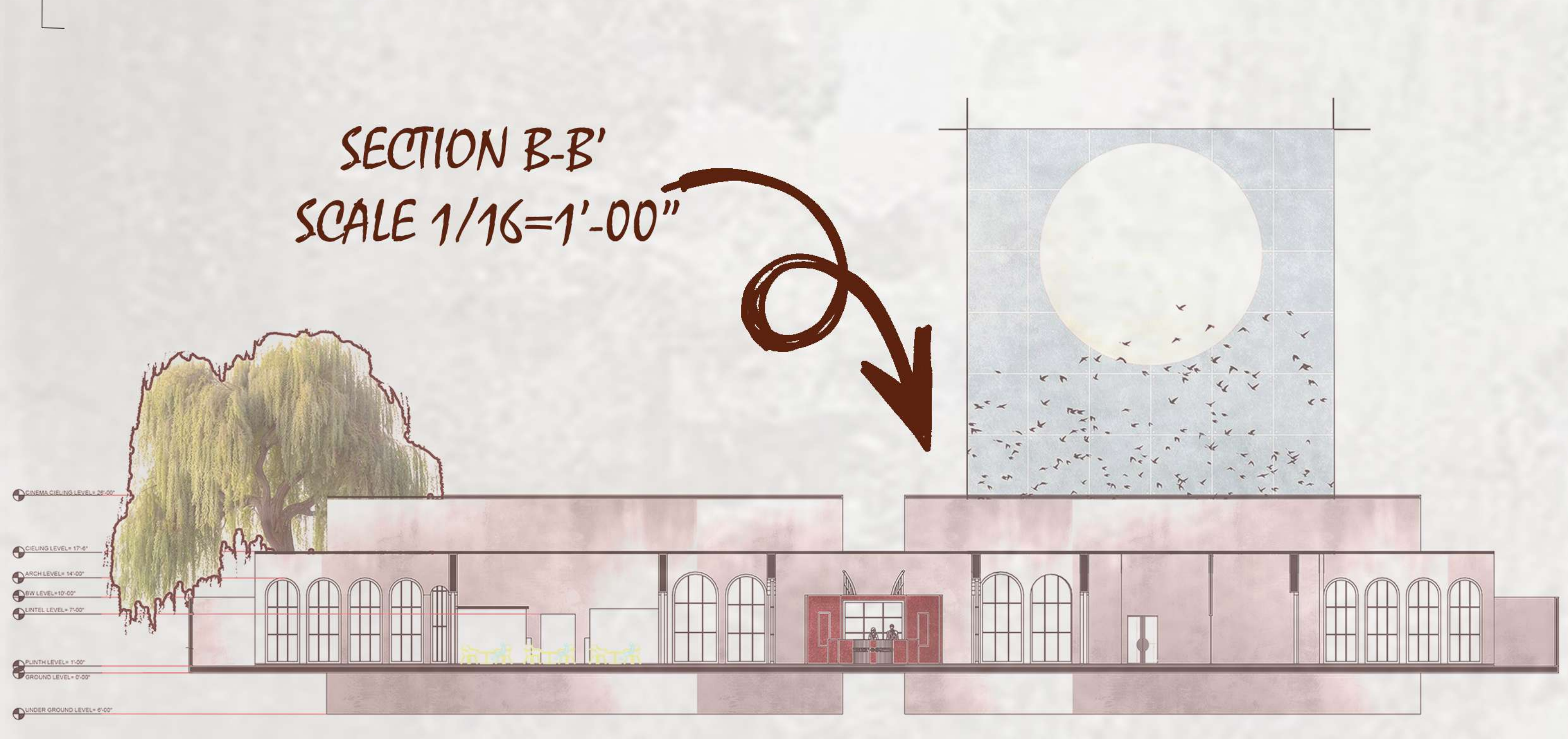
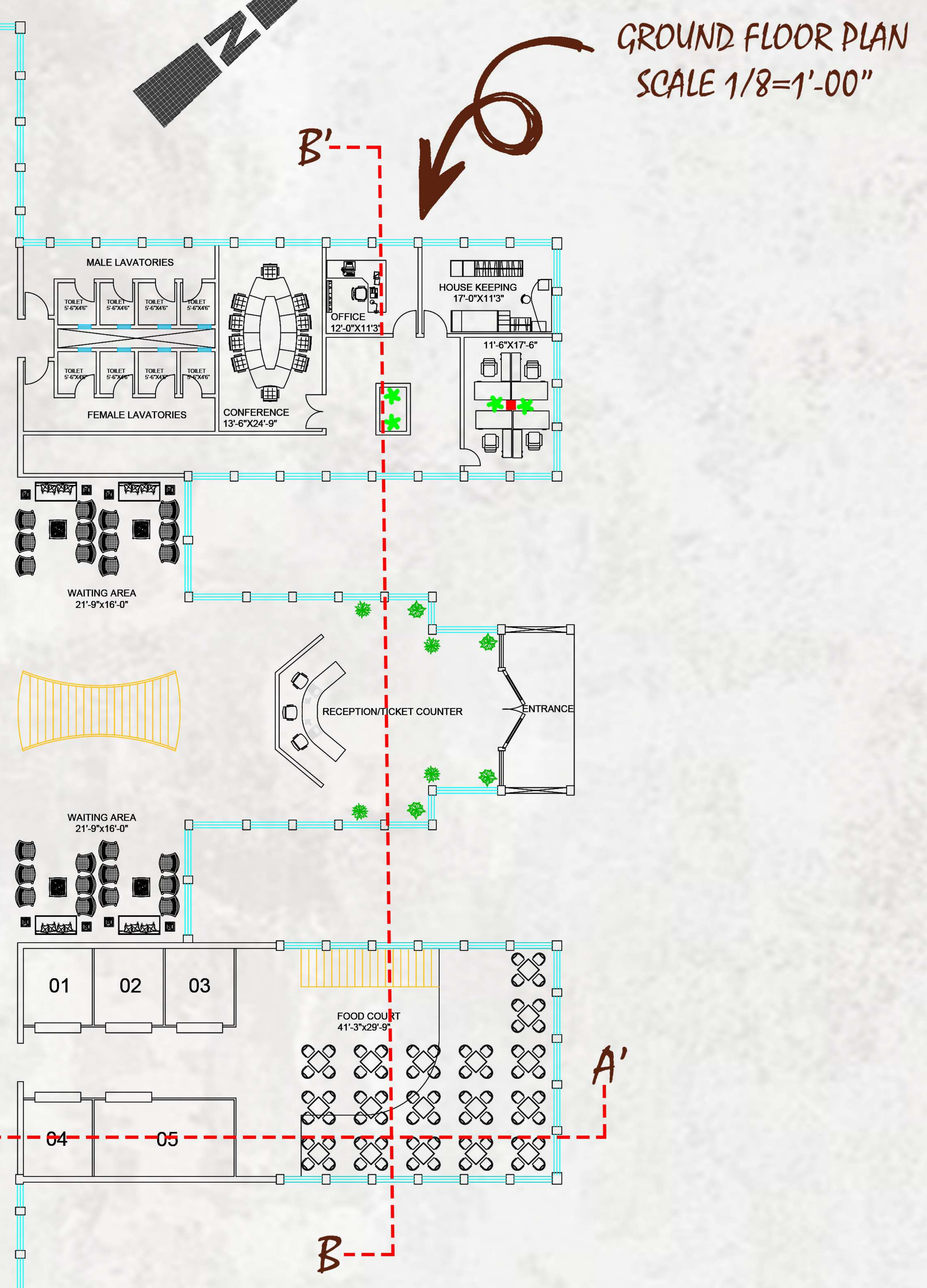
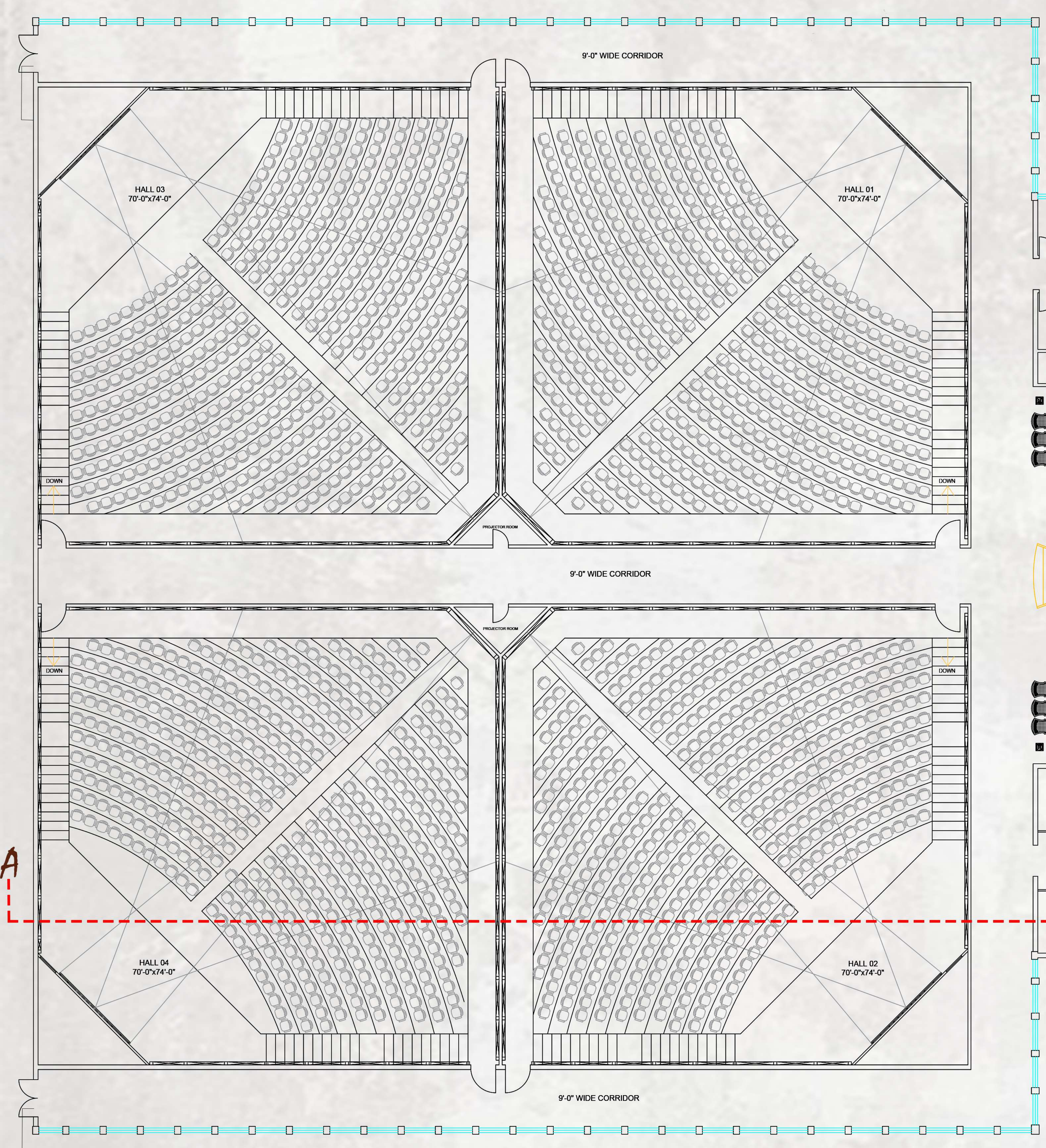
ZONING | CIRCULATION | SPATIAL RELATIONSHIPS

- LEGEND / KEY**
- ZONING**
- Public Spaces
 - Semi-Public Spaces
 - Private / Service Spaces
- CIRCULATION**
- Visitor Flow
 - Staff Flow
 - Emergency Circulation
 - Service Circulation
- SYMBOLS**
- Ticket / Information
 - Seating
 - Food
 - Washroom
 - Staircase
 - Cinema Hall
 - Emergency Exit
 - Service / Utility
 - Admin / Staff



INSPIRATION

A key inspiration drawn from the case study is the strategic maximization of natural daylighting within the building. By thoughtfully incorporating large glazed openings, light wells, and carefully oriented fenestrations, the design significantly reduces dependency on artificial lighting during daytime hours, leading to substantial energy savings and enhanced user comfort. This approach has strongly influenced the development of Green Screen Cinema, where passive daylighting strategies are integrated to create a more sustainable, energy-efficient, and visually engaging cinematic environment while maintaining the required ambiance for film projection spaces.



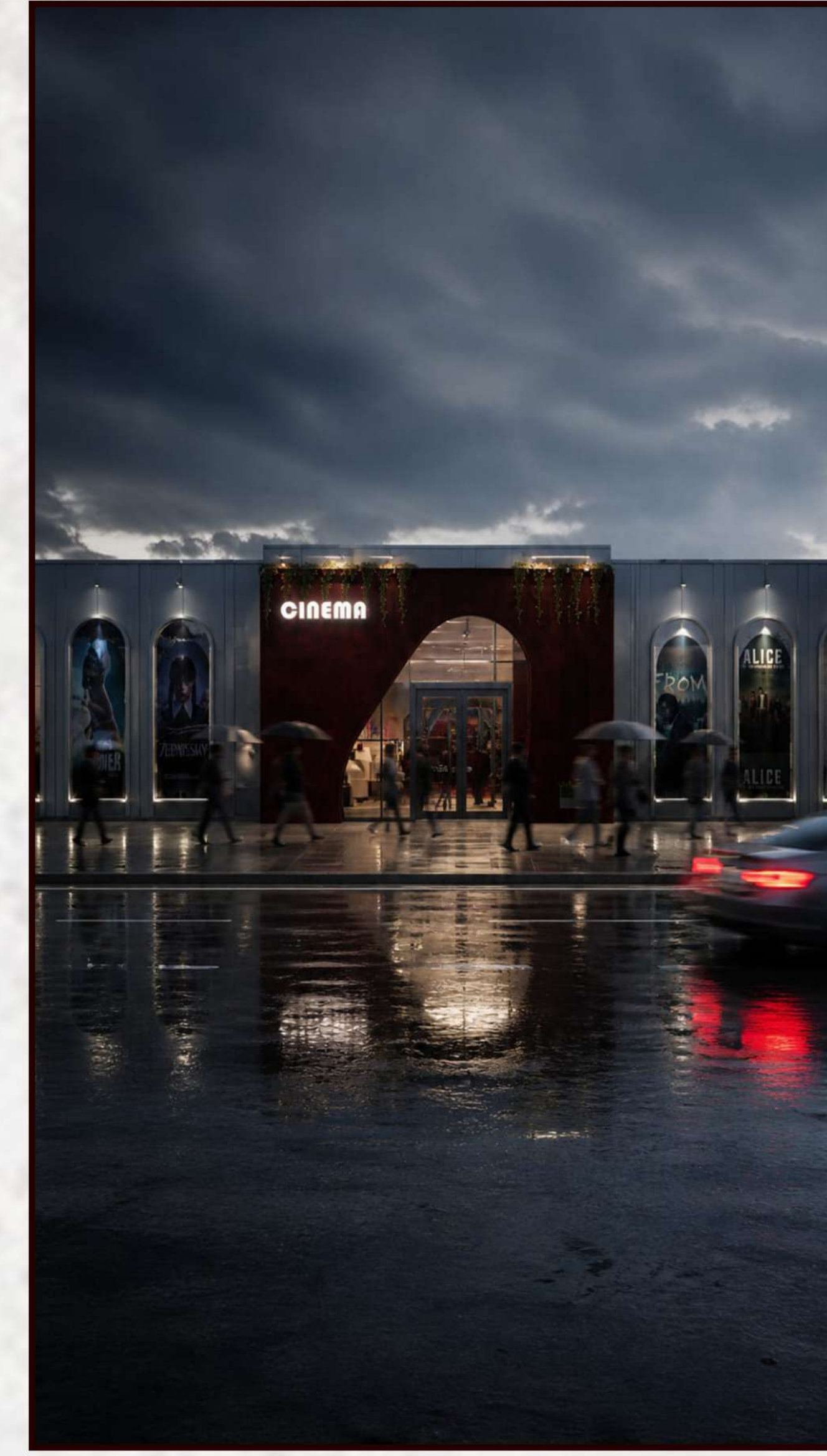
GREEN SCREEN CINEMA (A SUSTAINABLE AND ECO-CONSCIOUS CINEMA)

عبدالصمد جمالي

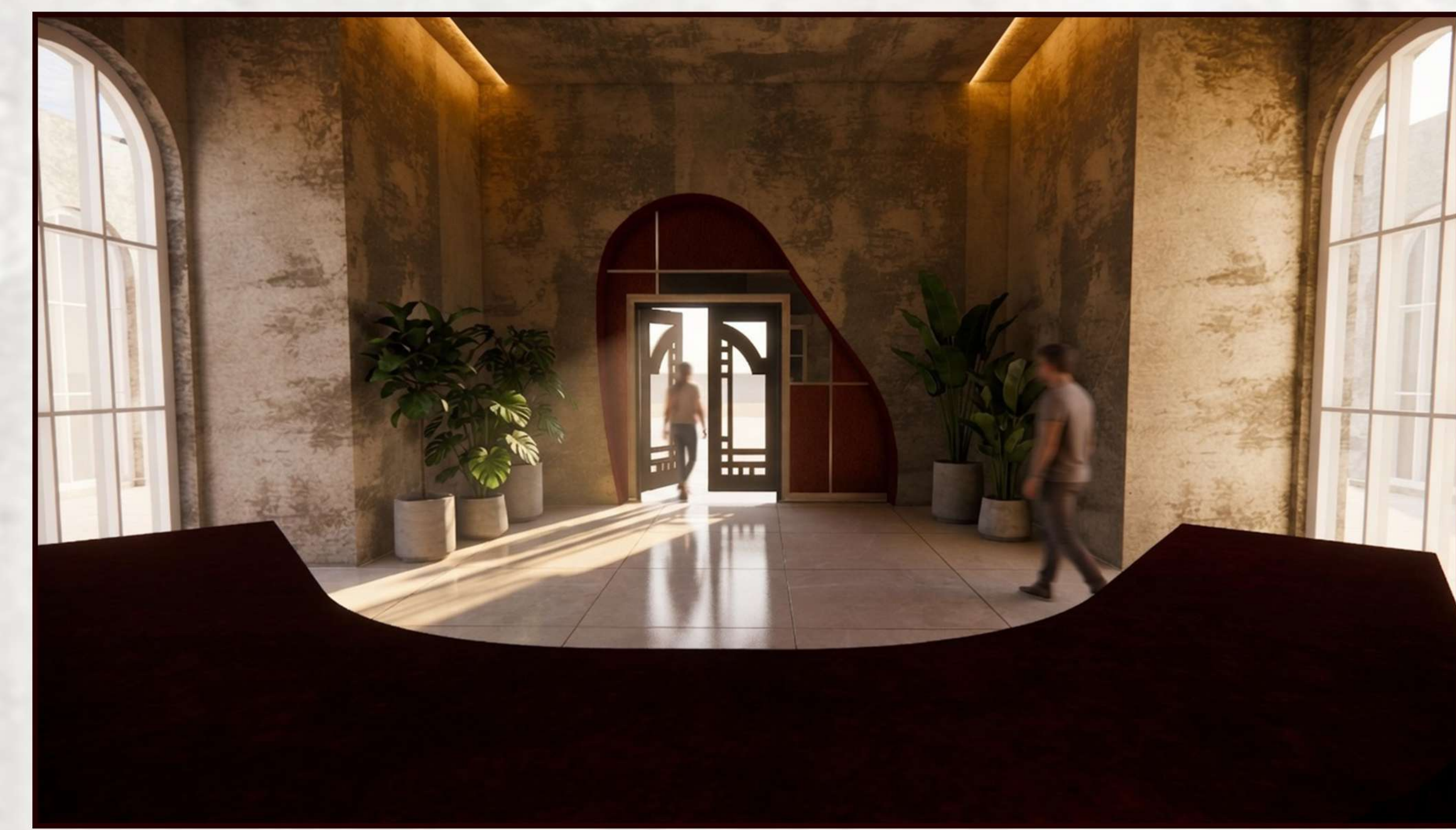
21AR061

SW ELEVATION
SCALE 1/16=1'-00"

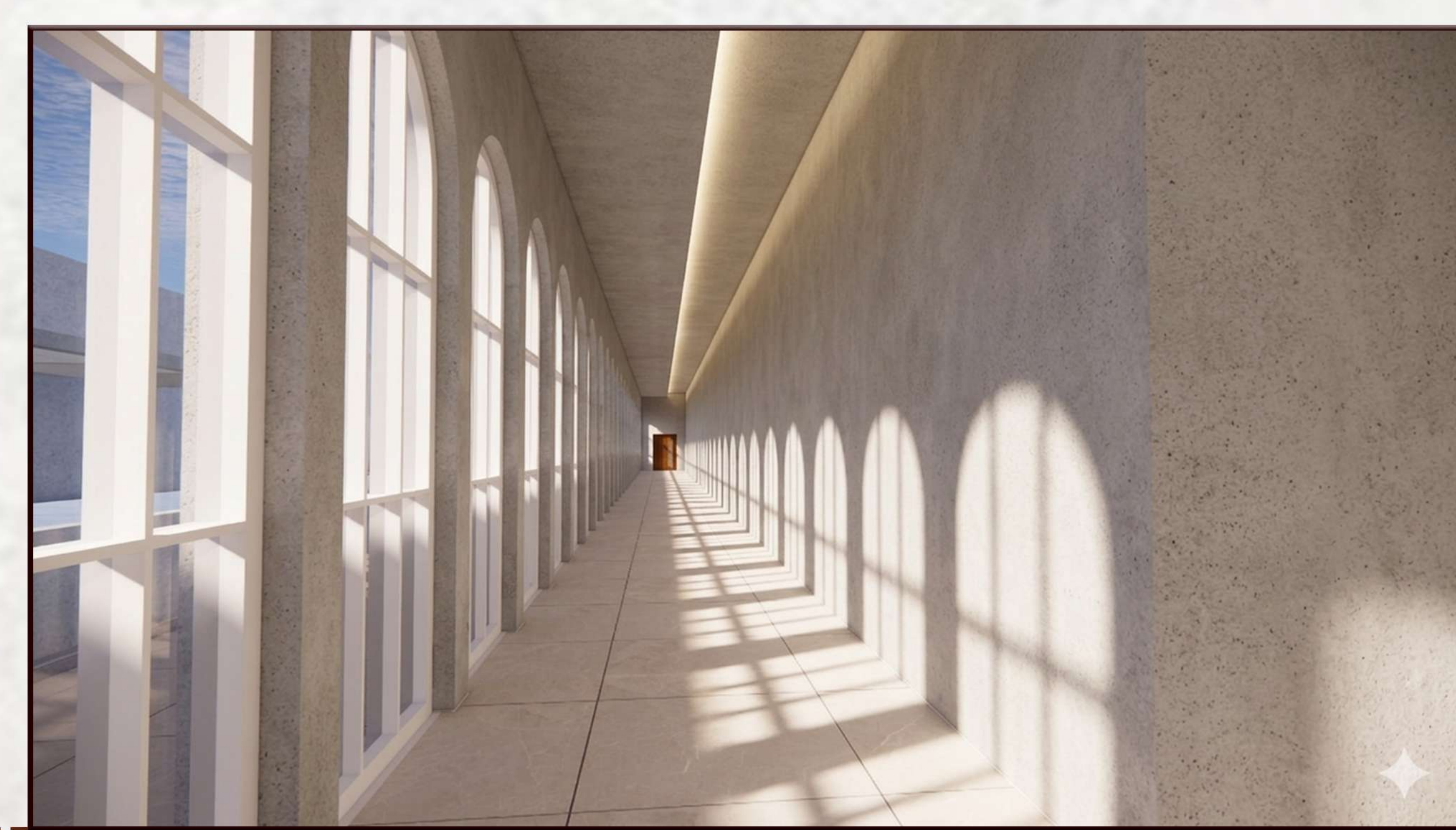
FRONT ELEVATION
SCALE 1/16=1'-00"



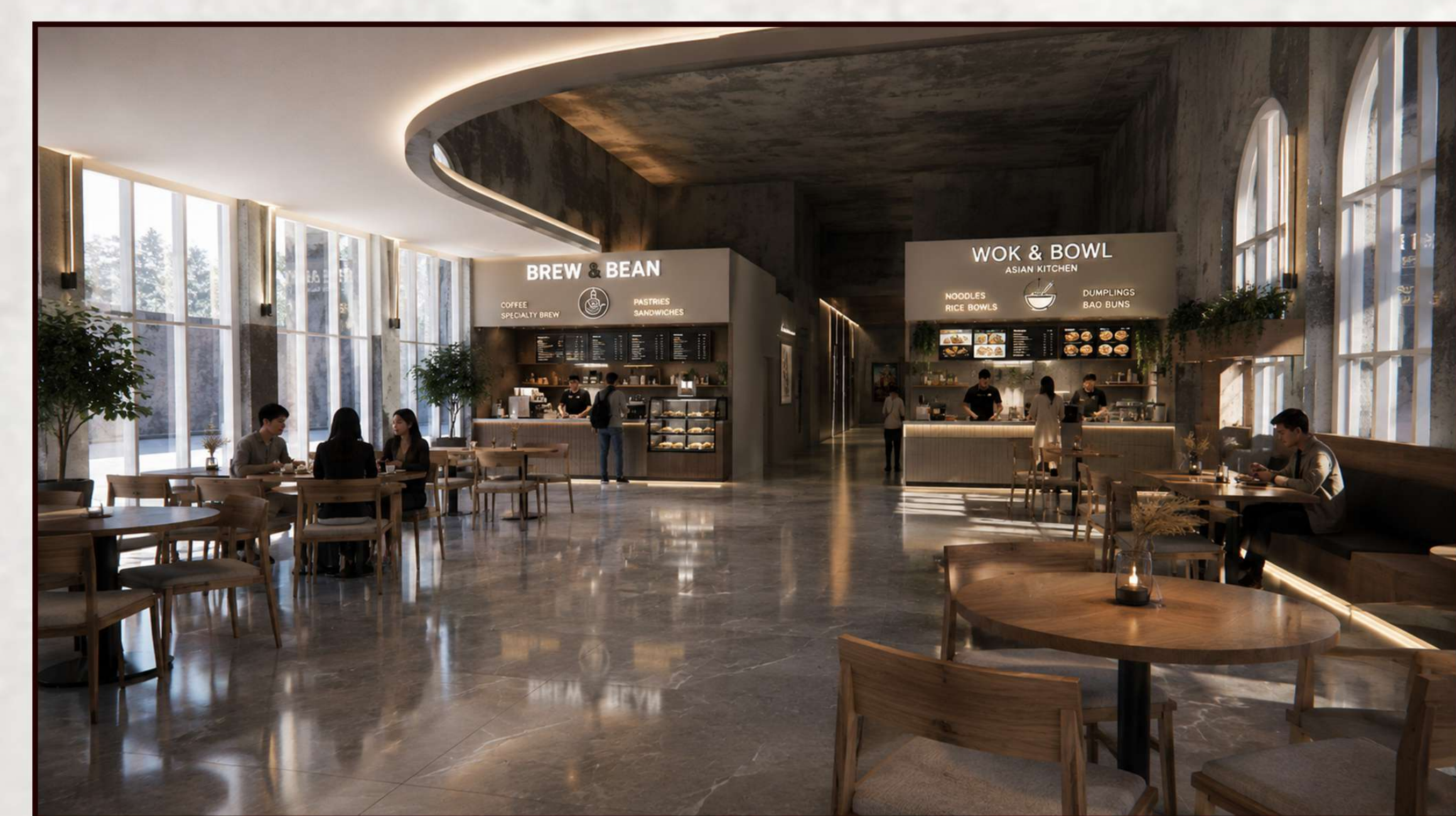
MASTER PLAN



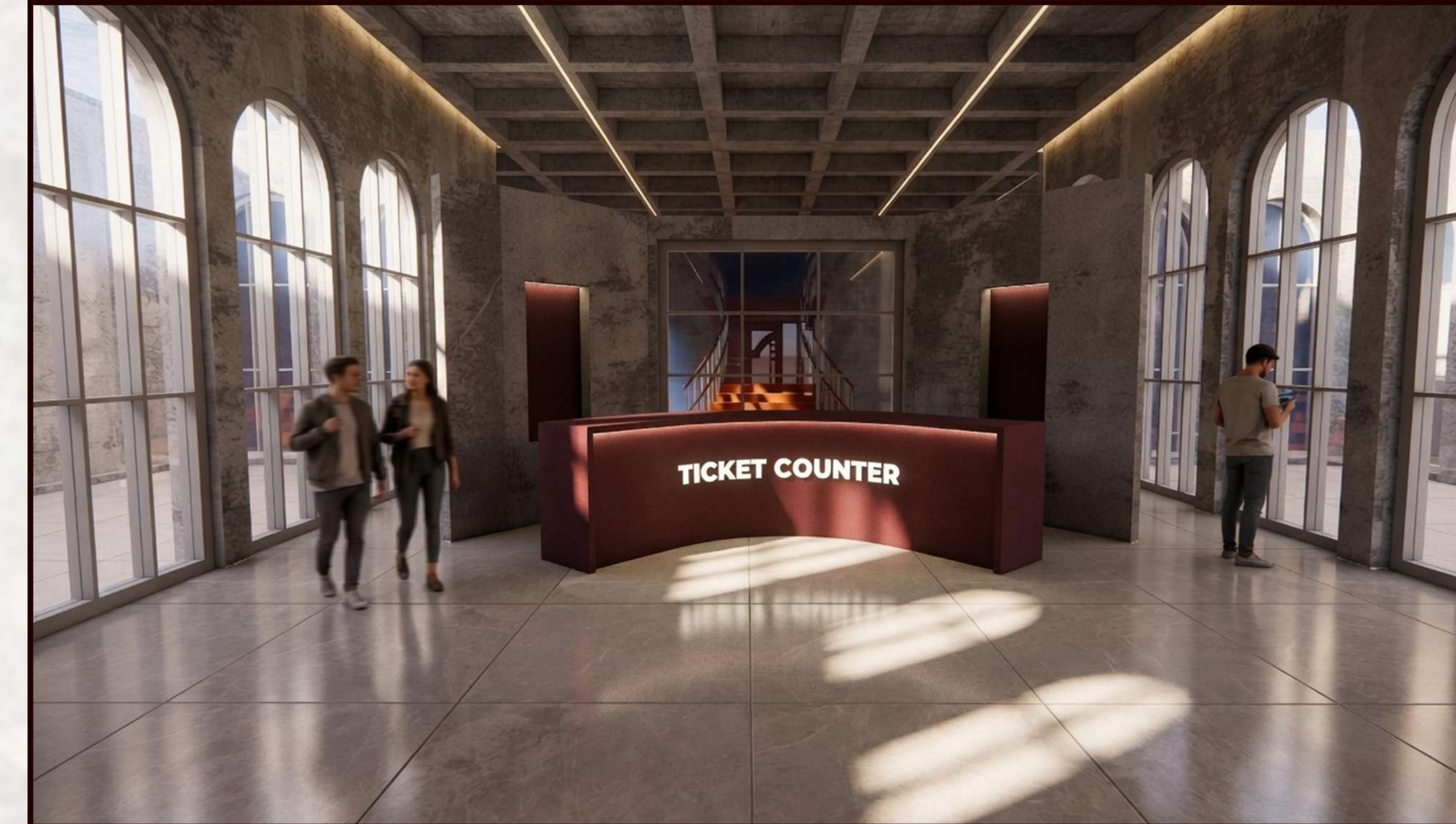
MAIN ENTRANCE



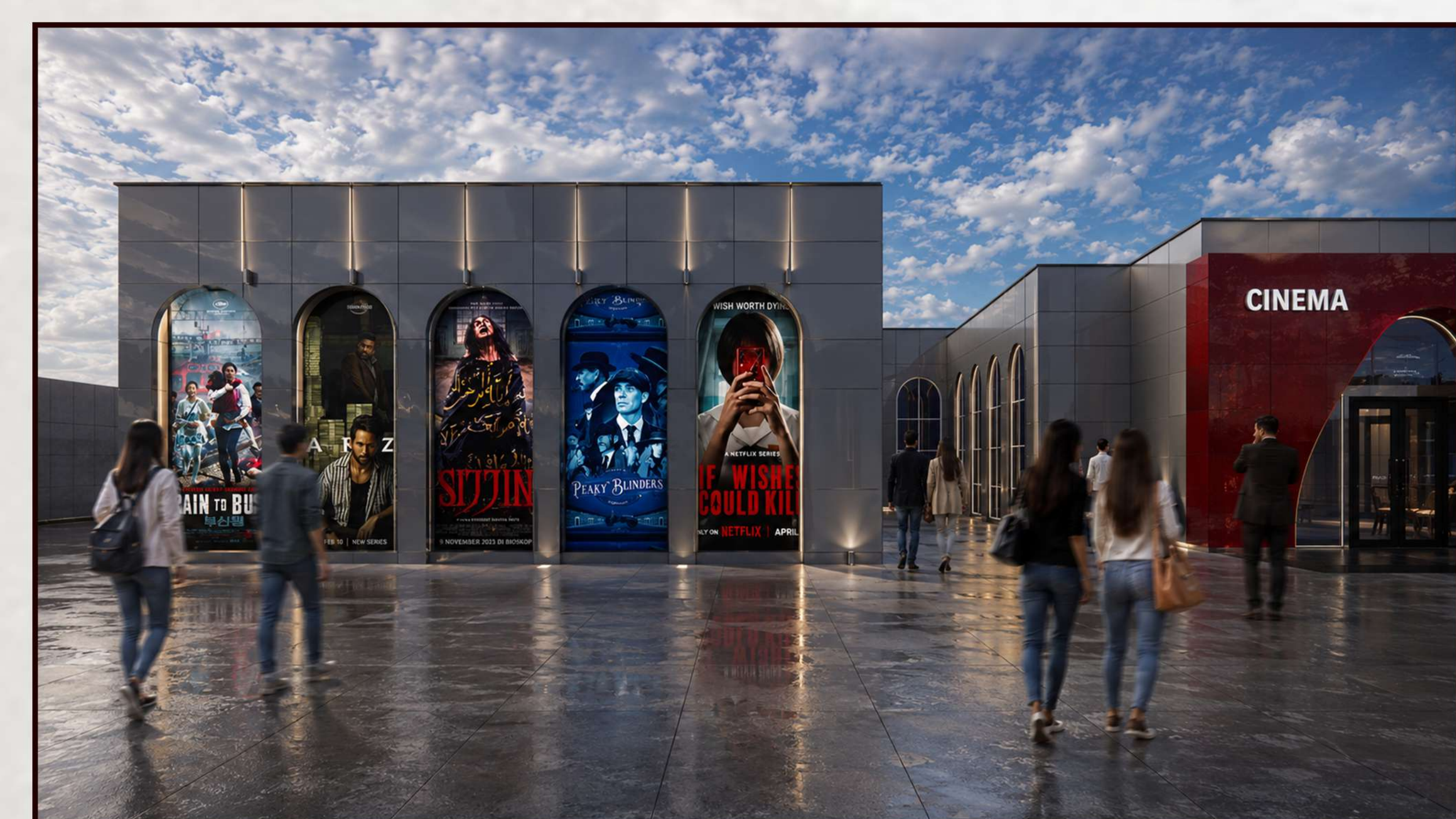
EMERGENCY EXIT CORRIDOR



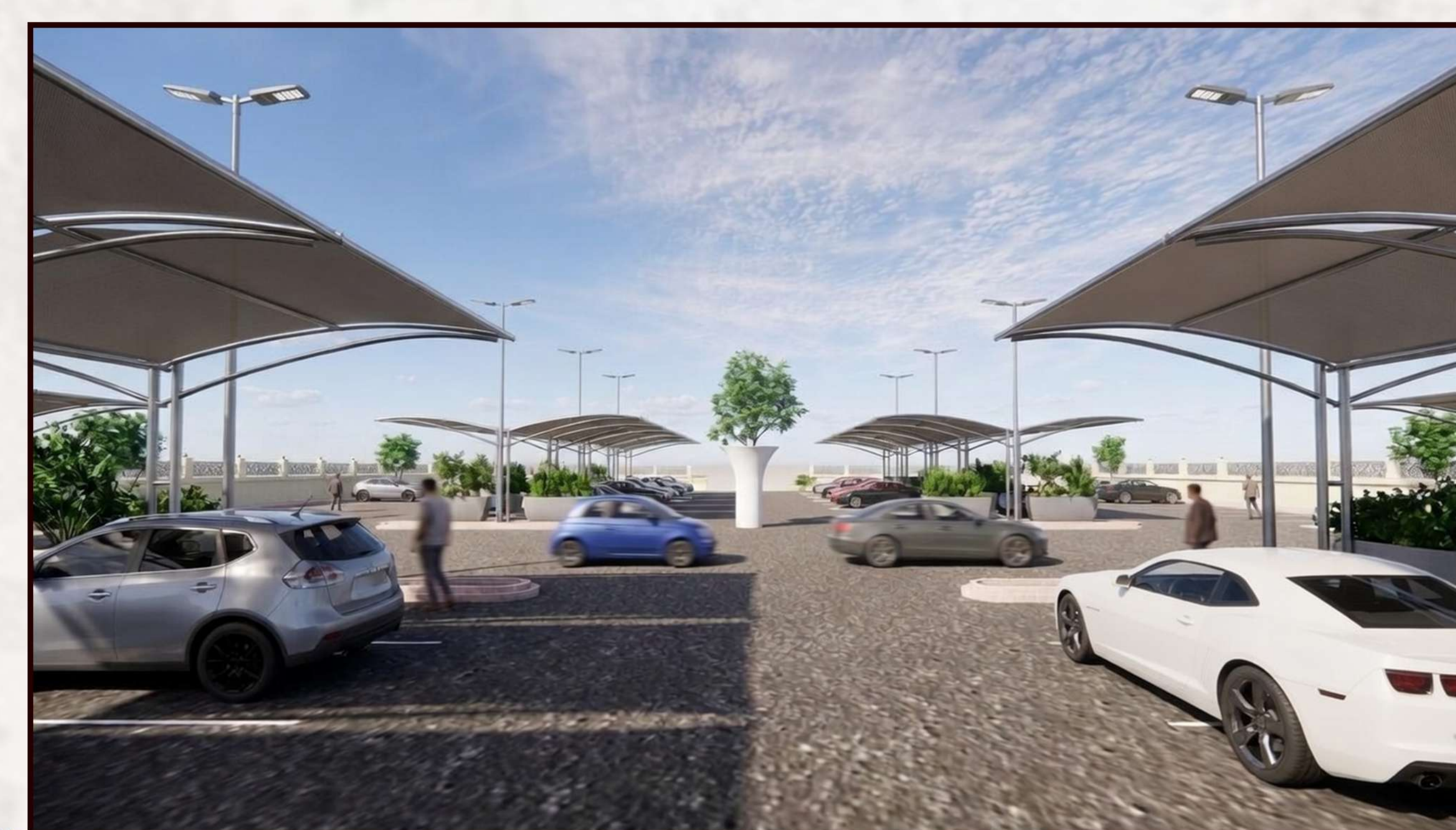
FOOD COURT



TICKET COUNTER/RECEPTION



ENTRANCE OF THE BUILDING



PARKING AREA

