

Initial Conceptual Work



The in(ber)tween

"A living archive refers to practices and environments that connect the organisation, curation and transmission of memory with present-bound creative, performative and participatory processes."
— Amelia Sabiescu

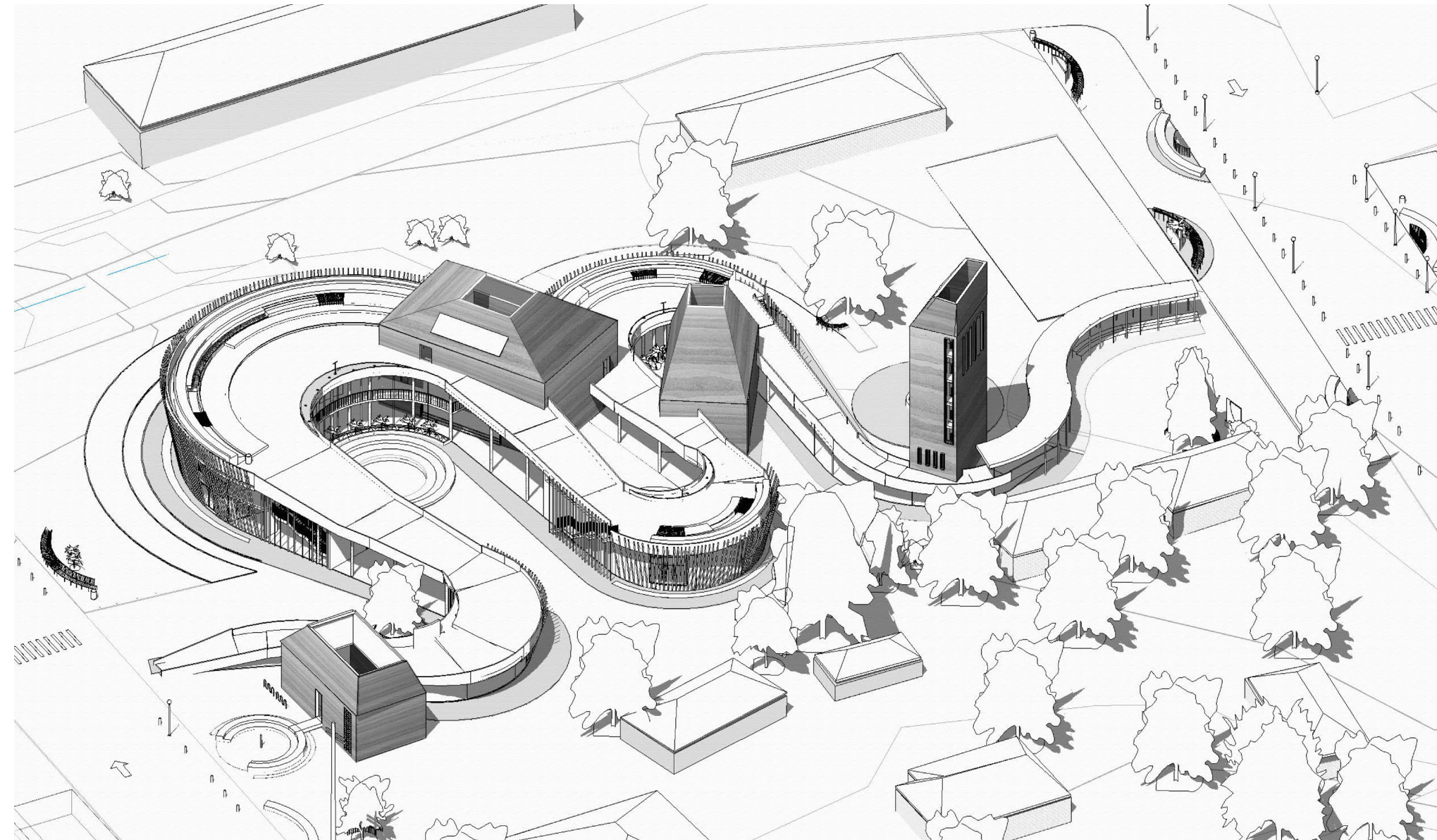
This project began with two questions: **What can be done with abandoned spaces? And who gets to define the cultures and ideas that hold value?**

As the second, individual phase of a project exploring archives in relation to people, the proposal is situated in Makokoba, one of Bulawayo's oldest working-class communities.

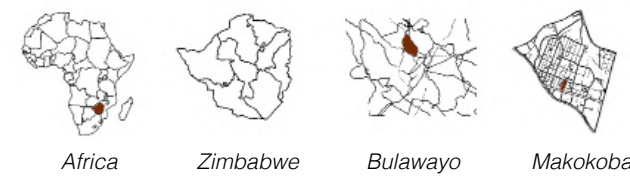
The project challenges the idea of culture as only traditional African heritage. While these histories remain important, it also views culture as the everyday social spaces, relationships, and collective experiences that shape community life.

By bringing together traditional Ndebele Architecture references and the lived realities of Makokoba, the Living Archive becomes a space where memory is not only preserved but continuously created.

What can we do with abandoned space ?



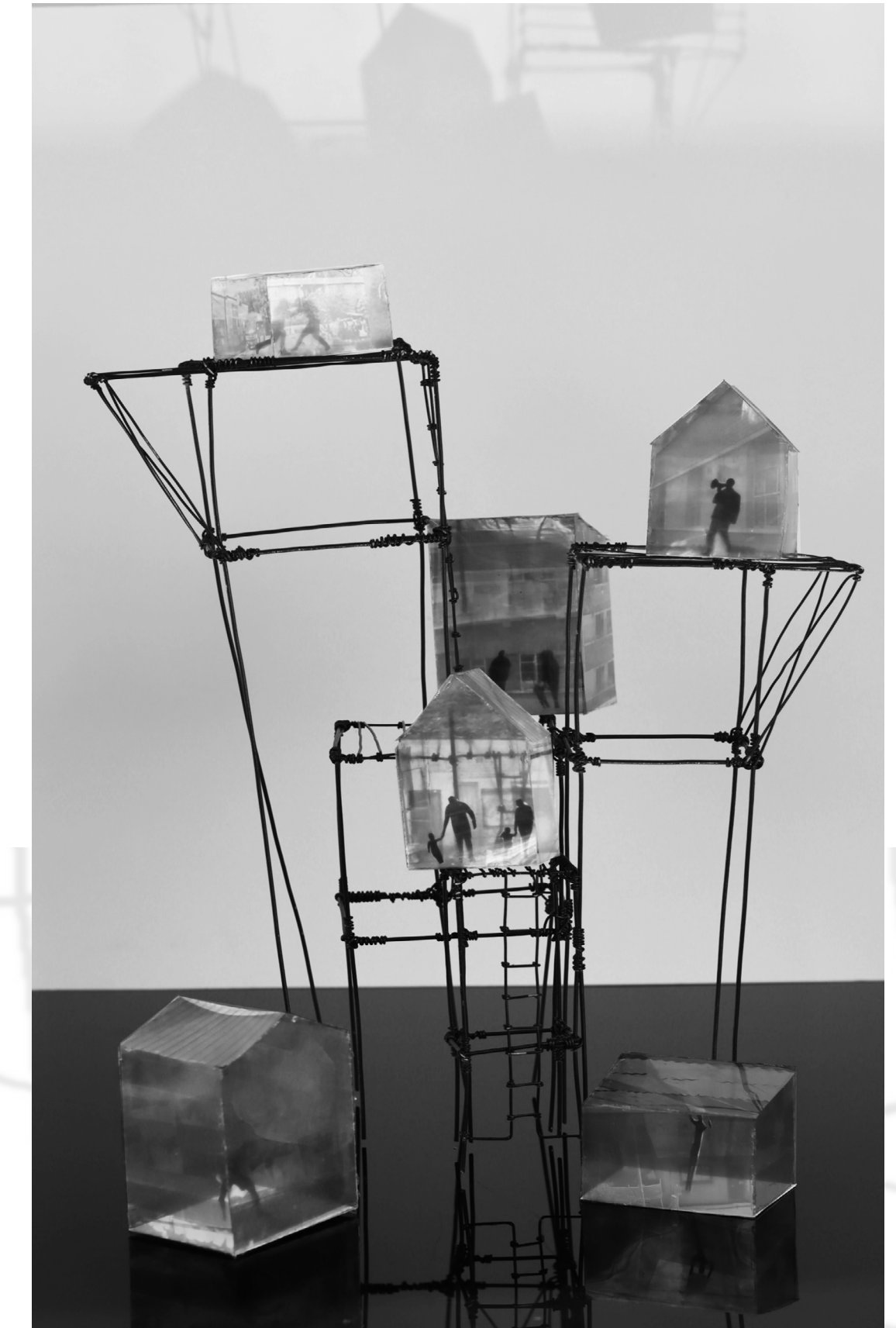
3D render image of project



Makokobas structures though weathered by time, still breathe the stories of protest, culture, and bravery . Their crumbling walls hold whispers of defiance and devotion. This architecture; unconventional yet profoundly grounded in tradition, stands as both memory and resistance. It reshaped my thinking of what belongs to culture, what endures as "traditional," and what evolves through change.



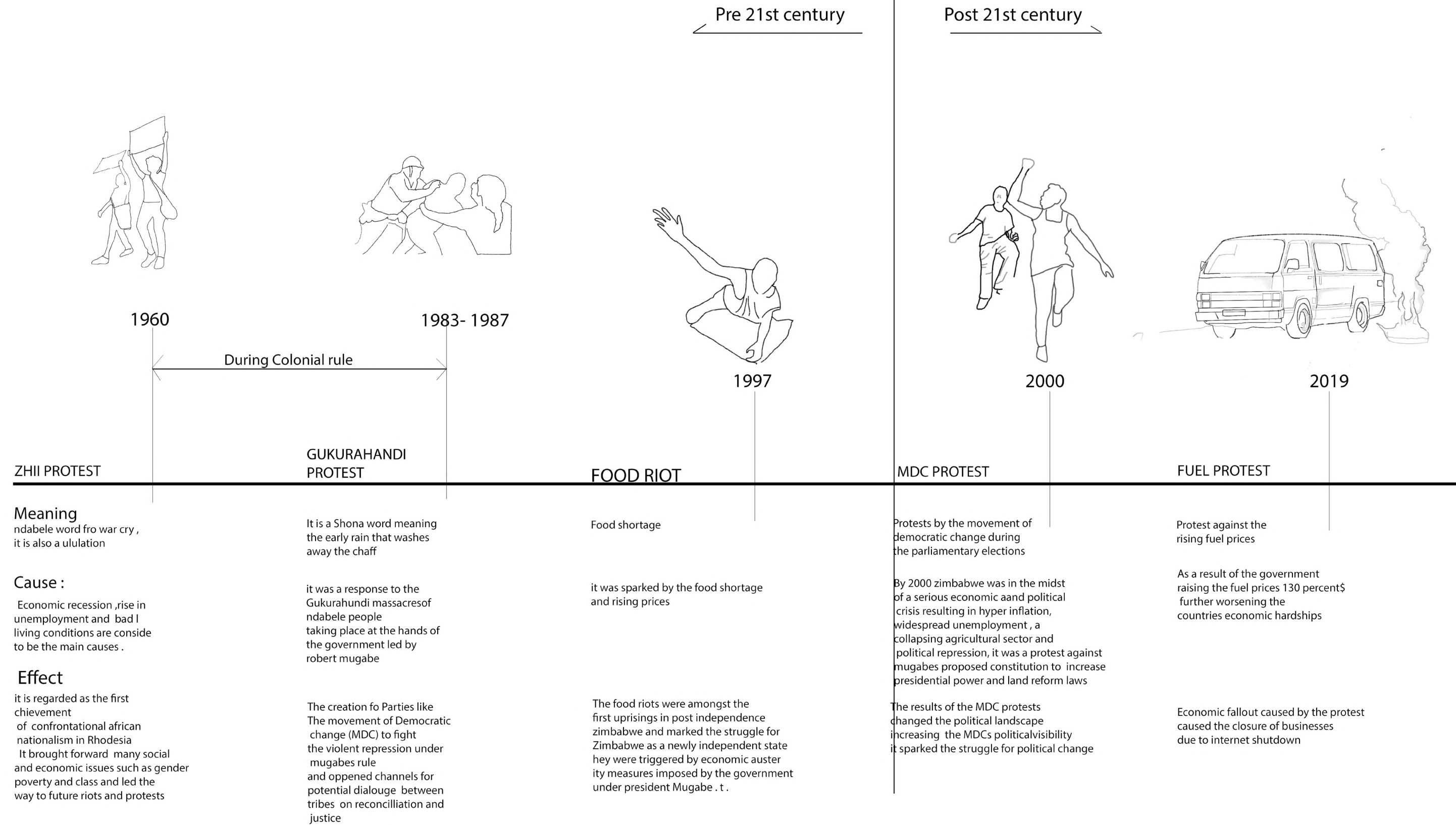
Makokobas form carrying its history
Photography 1



Makokobas forms carrying its history
Photography 2

Bulawayo: A site of protest

Bulawayo means 'The one to be Killed'
It is the site of Protest and was very crucial for Zimbabwe's independence from colonialism



Bulawayo: A site of history



Cultural Fabric

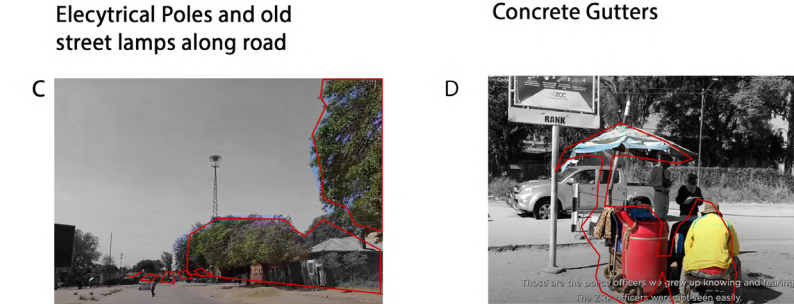
Meaning:
Cultural fabric refers to the historical, social, cultural elements that shapes a places identity, design and character

Main Roads

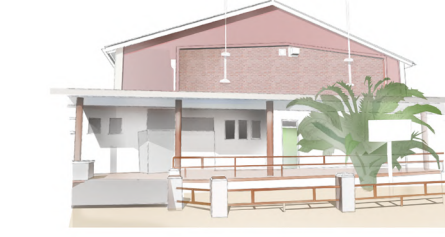
Two way traffic on paved main roads

Residential Roads

Unpaved roads in residential area
A lot of pedestrian traffic in these areas



Important Cultural Centre Makhumalo
-Flat rectilinear form
-Small windows and Doors



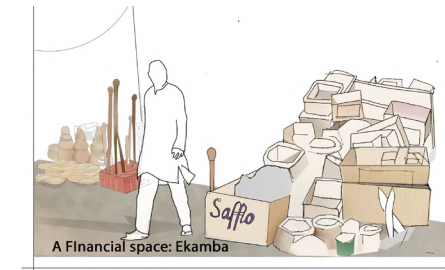
Beer Garden cultural centre
-traditional Plants
-Pitched roof



Homes
-Timber and steel used as fencing, emphasis on door ways



Big Bhawa -Important meeting point
-History on the walls



Ekamba Market
-Timber crafts

Site Plan



I chose Stanley Square as my site, once a place of gathering it now lies as unused segregated space. To activate the site and connect it to other important spaces, the galleries that represent these old cultural spaces unfold in the same rhythm as the community centers; a reflection of how these spaces once gathered people, stories, and life. This map references the earlier site analysis map showing the relationship of the archives with the existing cultural centres and the building to its context.



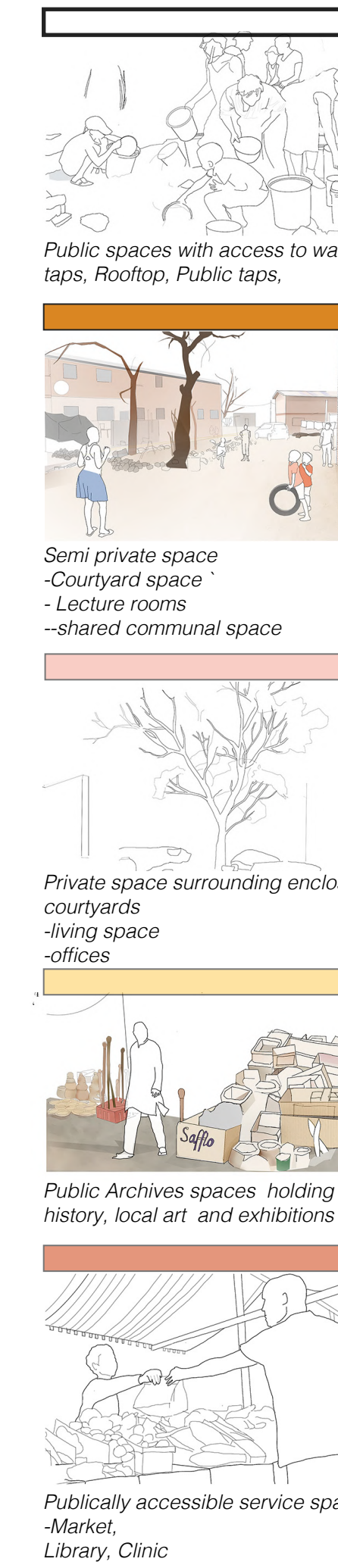
Site Plan

Programmig

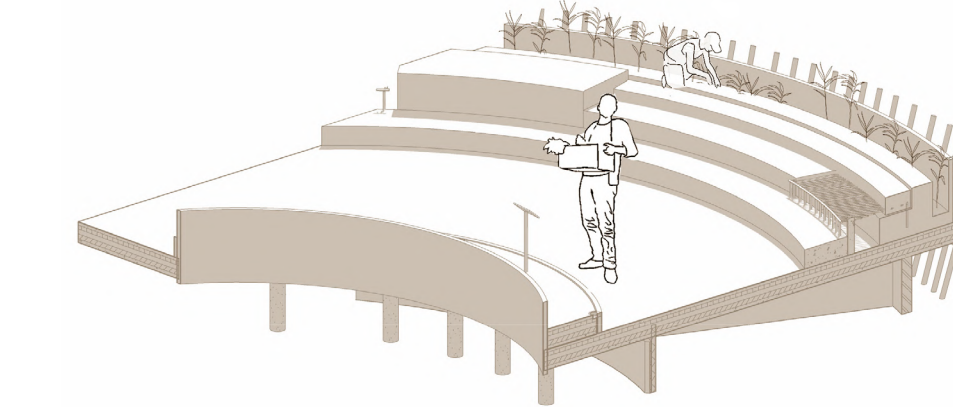
Programmes in the building mirror Bulawayo activities



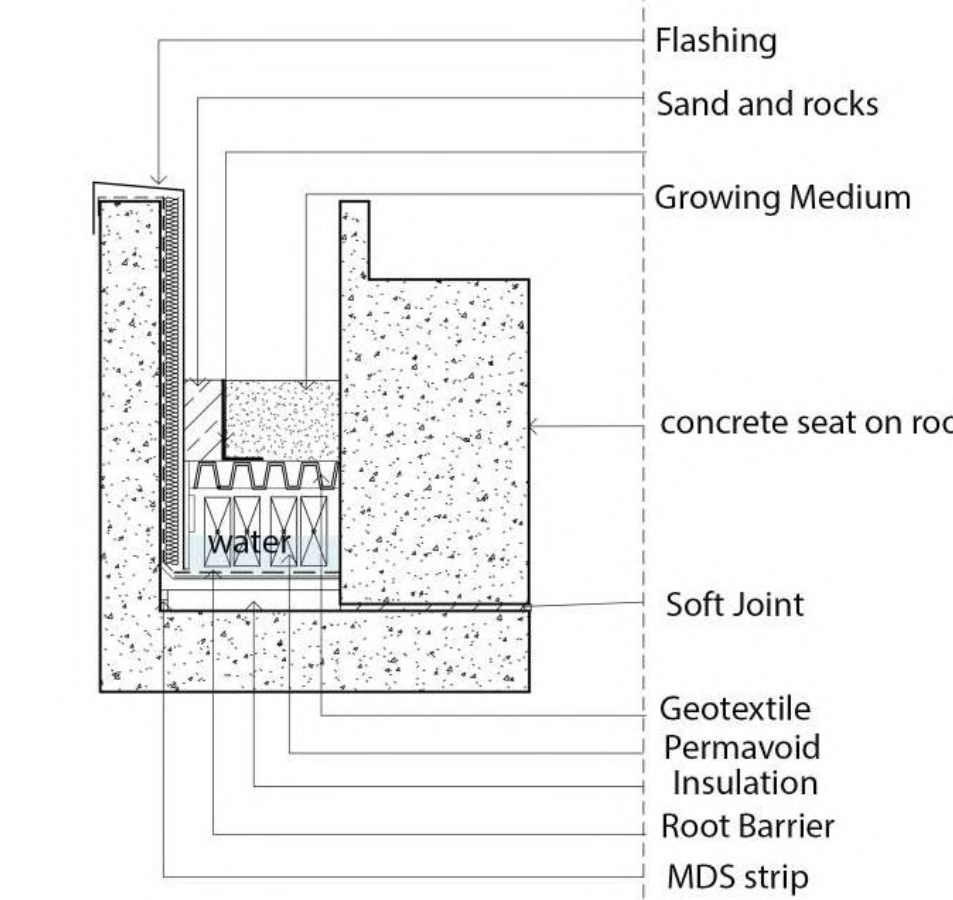
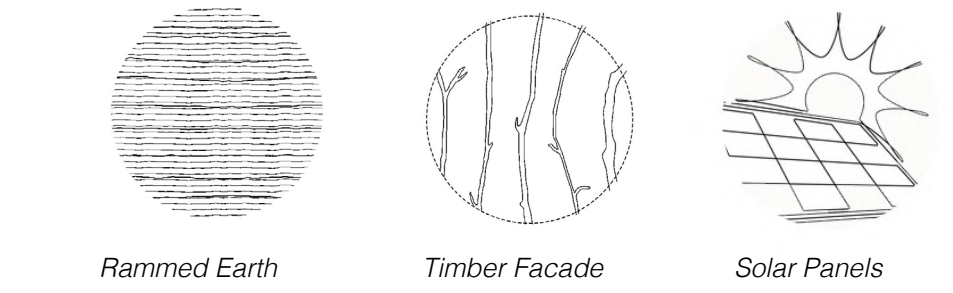
Axonometric Program diagram



Sustainability was an important aspect of the building. A blue roof gathers water for crops, while rammed earth walls, solar panels, and a timber façade weave sustainability it.

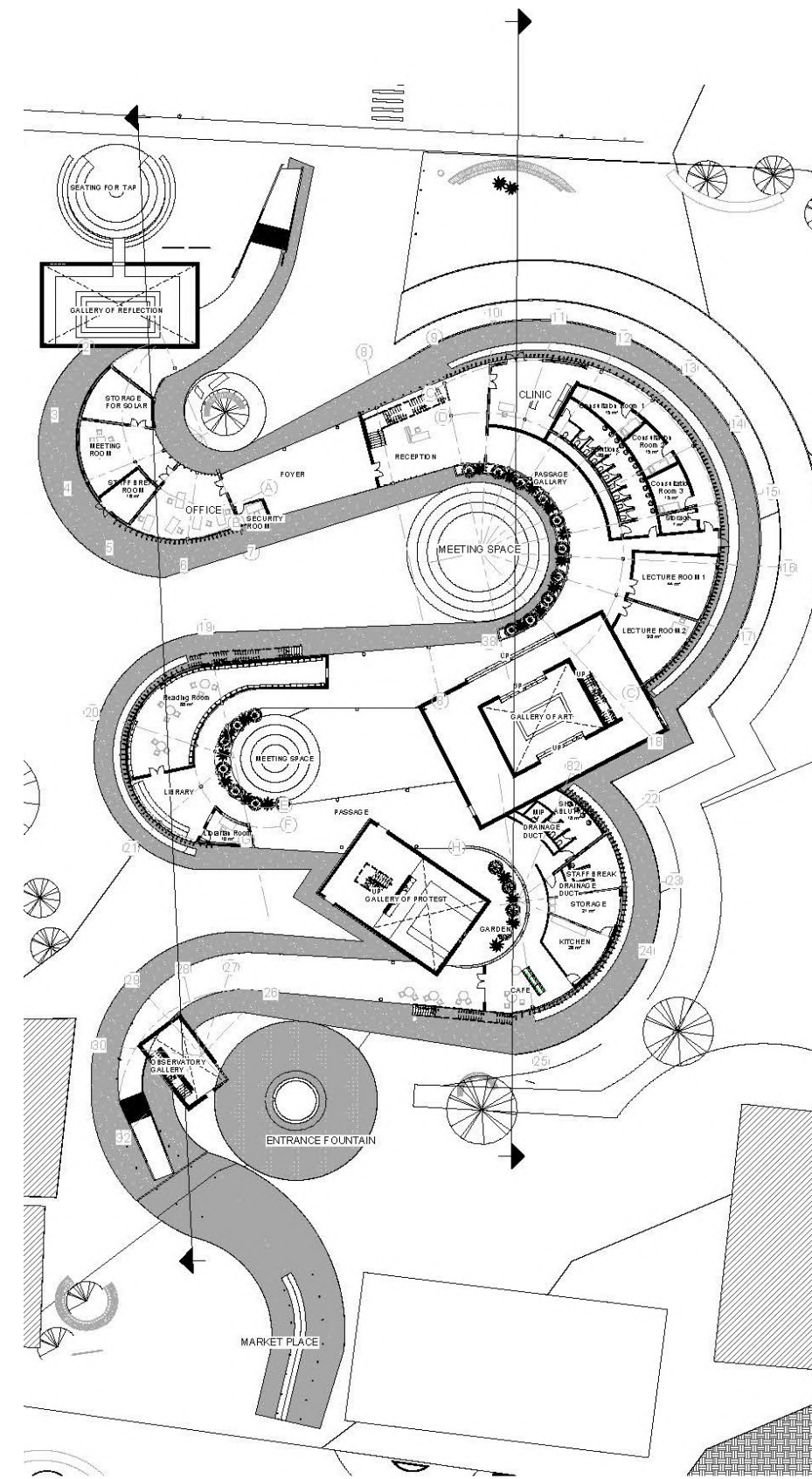


Blue Roof

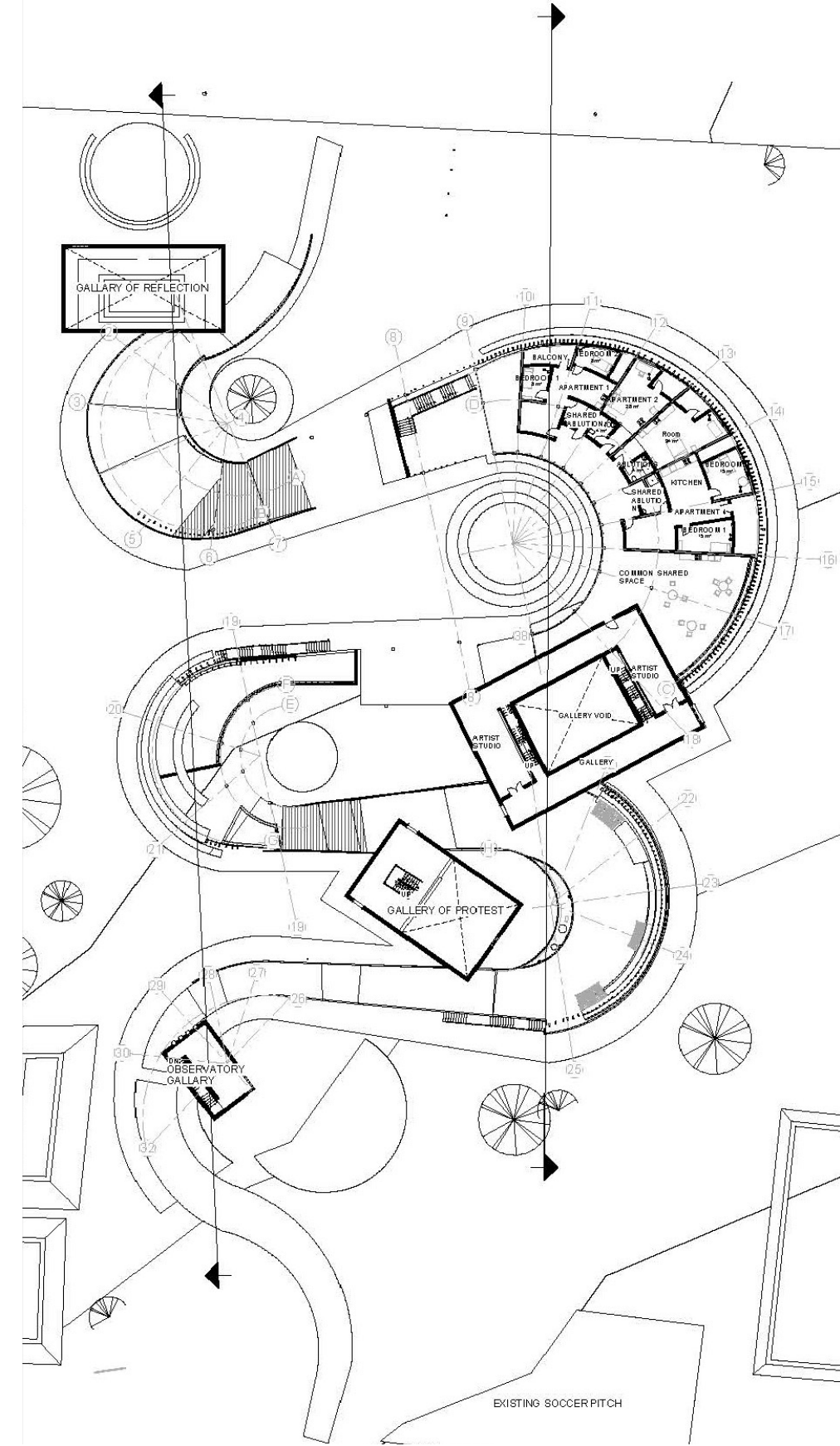


Blue Roof detail.

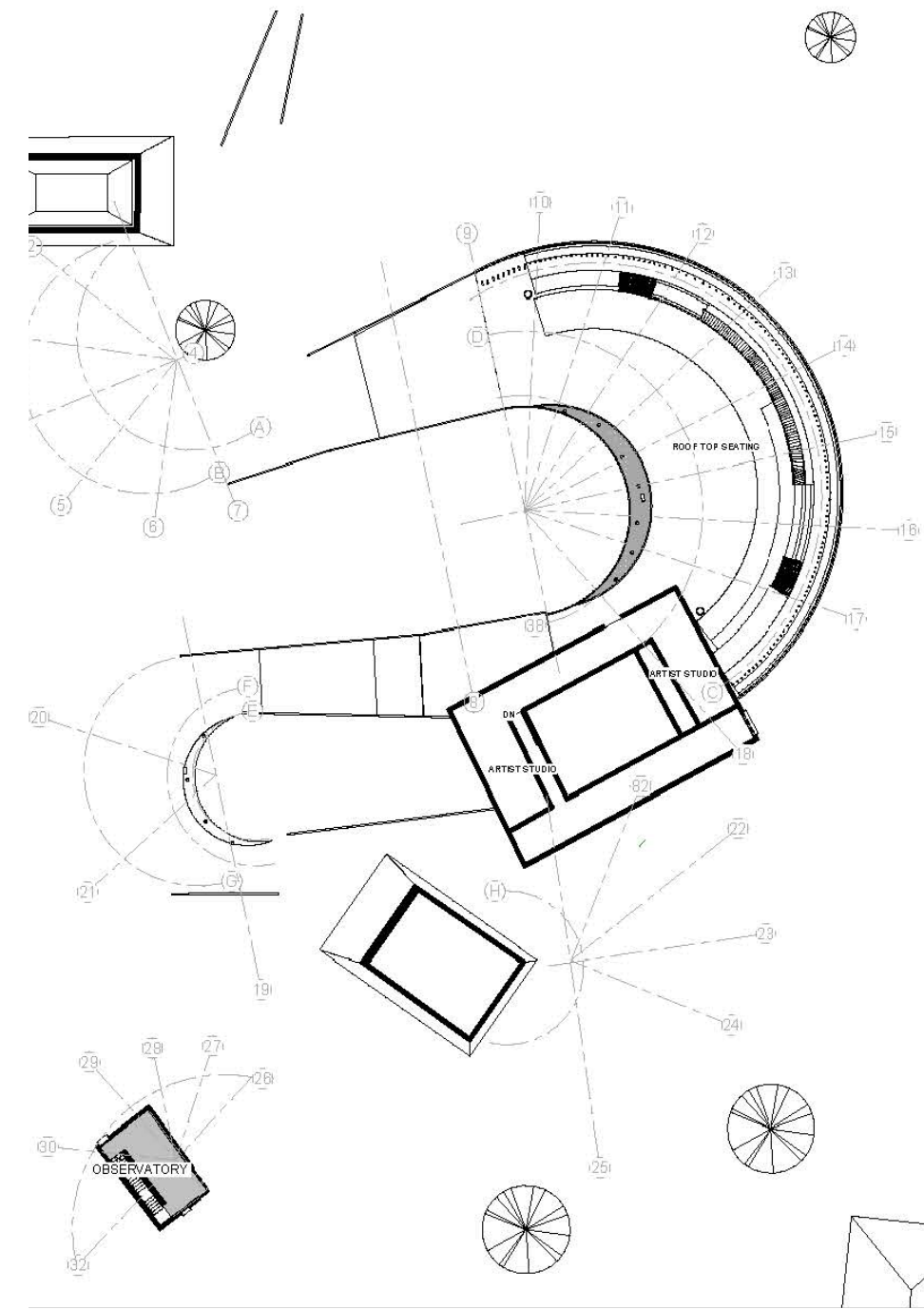
Final Drawings



Ground Floor Plan



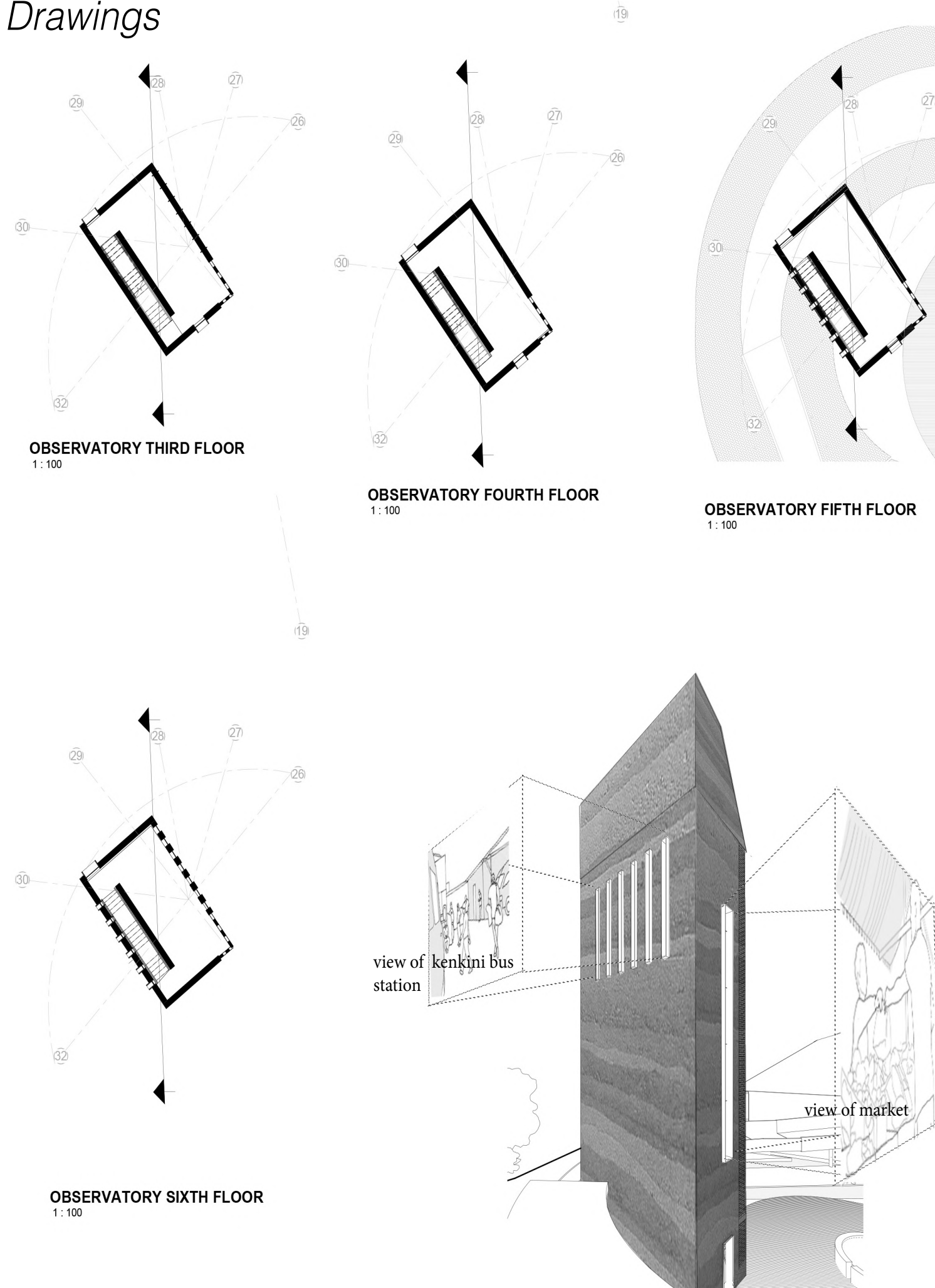
First Floor Plan



Second Floor Plan

Floor plans balance the fluidity of traditional Ndebele spatial patterns with the rigidity of the archives, creating a deliberate tension in the way people move through the building amplifying the idea of protest.

Final Drawings



OBSERVATORY THIRD FLOOR
1:100

OBSERVATORY FOURTH FLOOR
1:100

OBSERVATORY FIFTH FLOOR
1:100

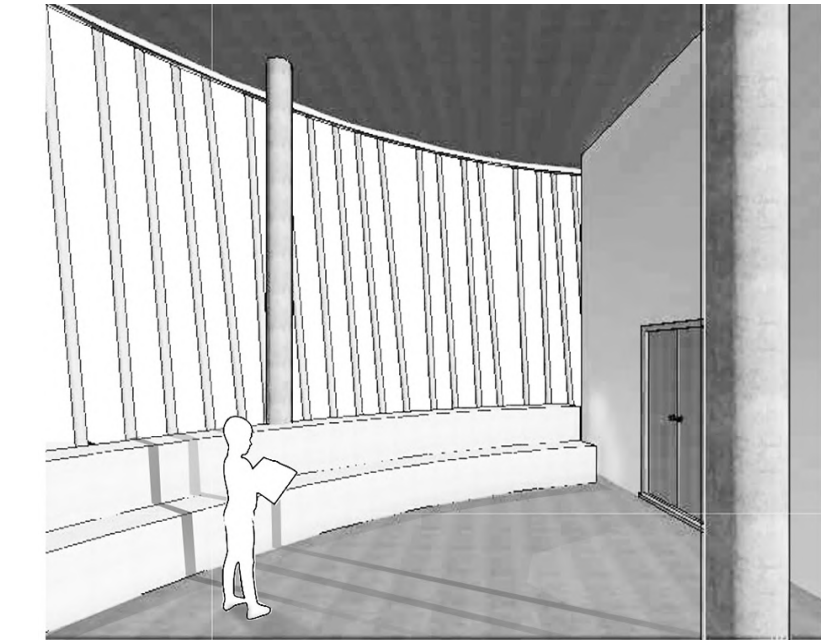
OBSERVATORY SIXTH FLOOR
1:100

view of kenkini bus station

view of market



1. Gallery of Reflection when it rains it could be transformed to a space that celebrates and connects people in a shared act of water collection



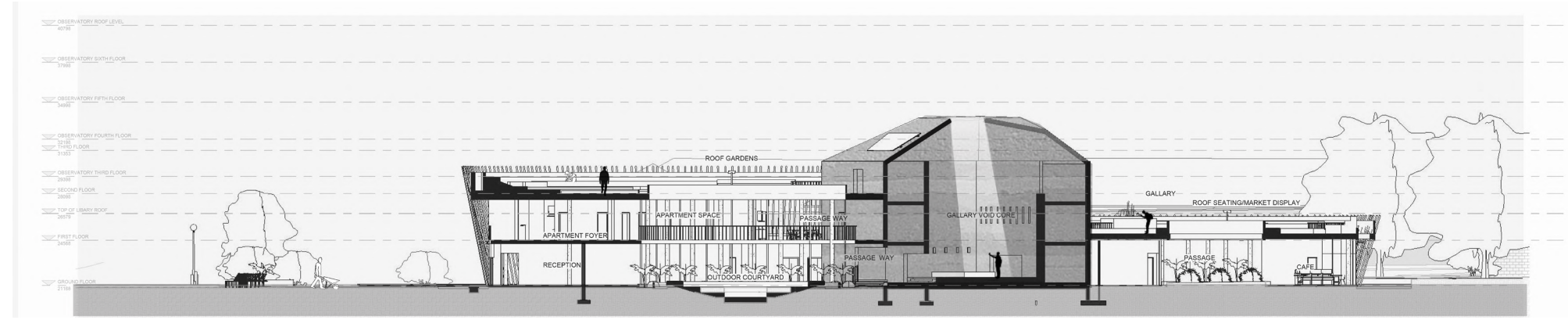
2. Library space with external seating space where people can congregate in an inside outside space with fresh air



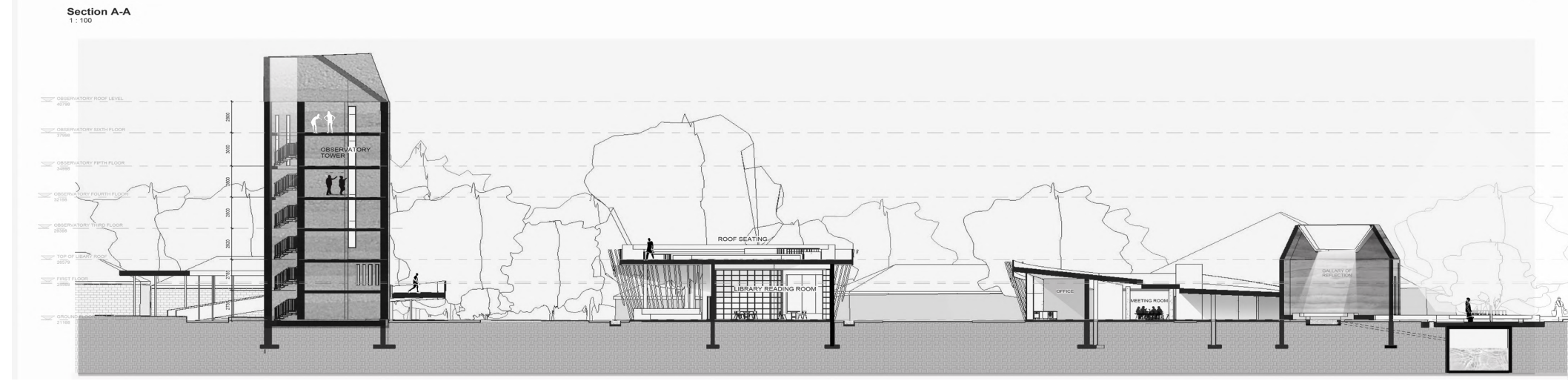
3. Library space with ambient light and light timber structure books on the bookshell walls

Final Drawings

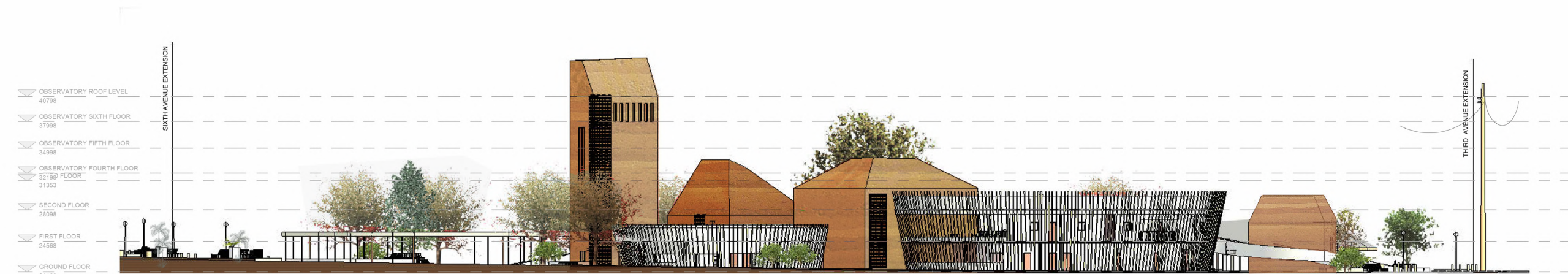
Section A-A



Section B-B



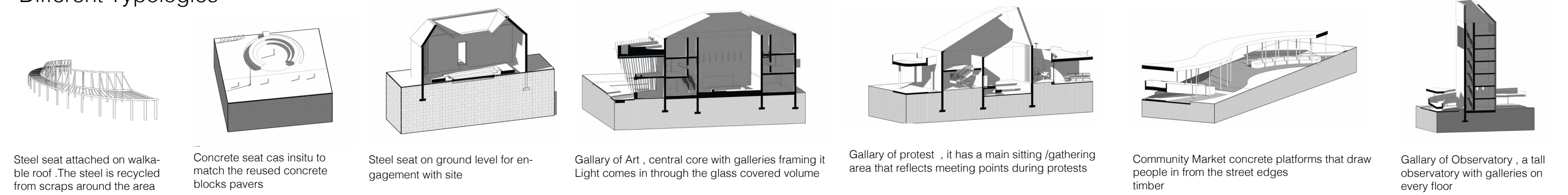
West elevation



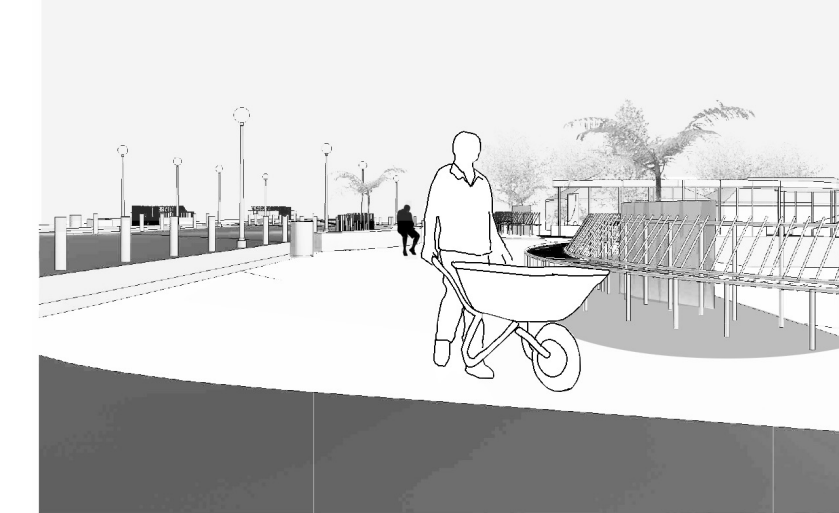
Interventions on Site



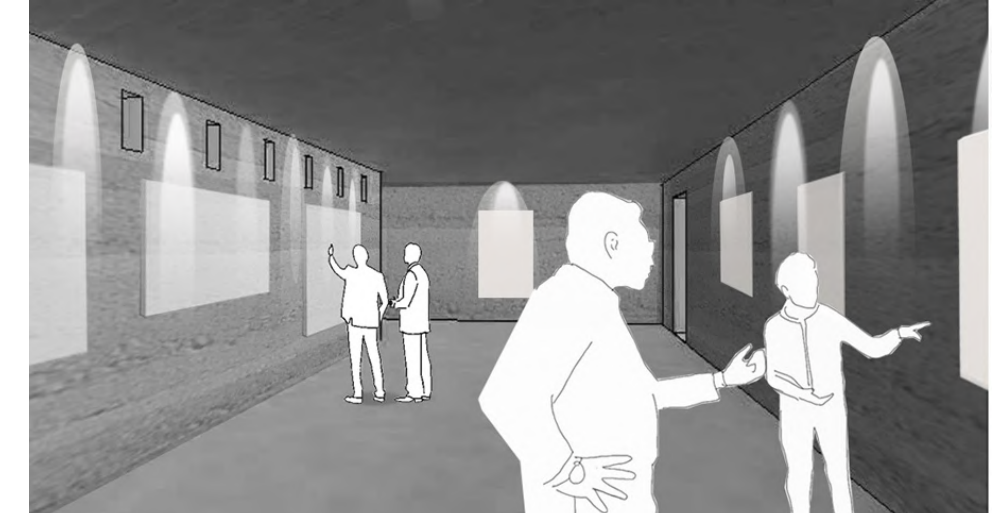
Different Typologies



Community Market:



Street Interventions: Recycled steel as seating and concrete . Bricks from previous building



Gallery of Art