



NAME

**Magna BS**



UNIVERSITY

**Crescent school of architecture**



SUPERVISOR

**Ar. Saritha**



## ■ PROJECT DESCRIPTION

The project aims to stimulate and reward innovative thinking about how a house can be designed to the client. The design should harmonize with the natural environment, incorporate sustainable practices, and demonstrate innovative spatial solutions. It allows you to gain knowledge about design methodologies and functions of spaces. It also involves standards study about the spaces to achieve the required design.





SCALE 1:100

# Gewound Floor

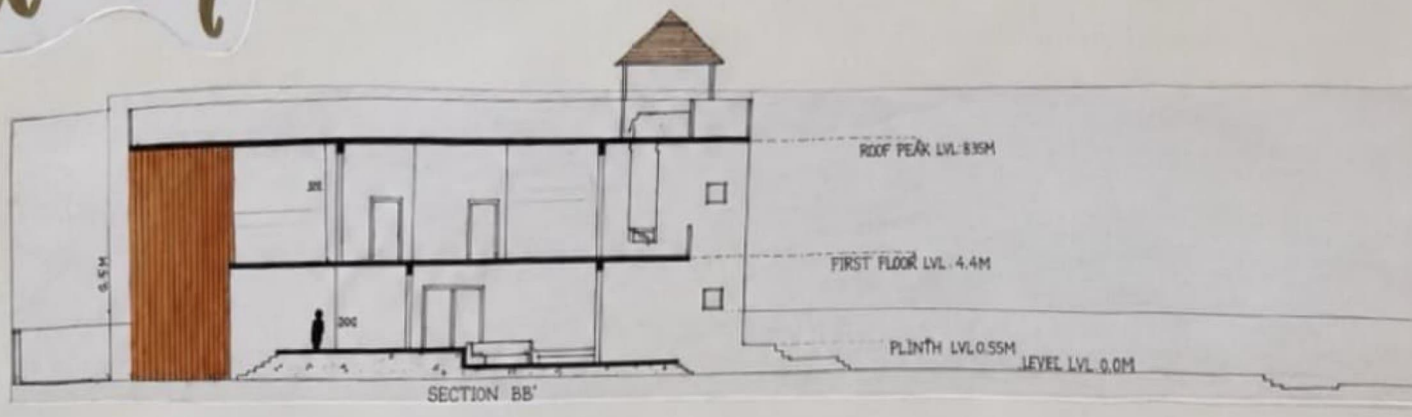


SCALE 1:100

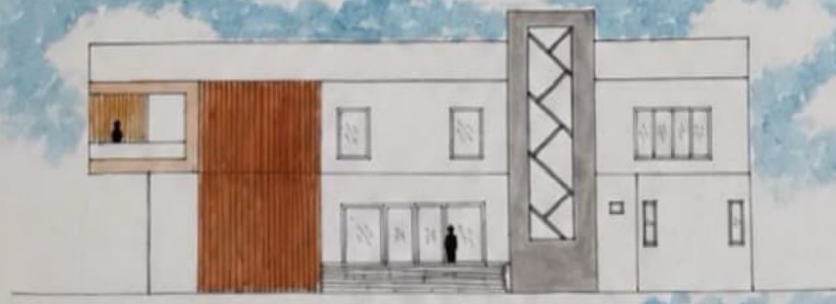
# First Floor



# Section



# Elevation



# Weekend Cottage

