



Name:

**A. Sahithi**



University:

*Crescent school of  
architecture*



Supervisor:

*AR Oviya K*

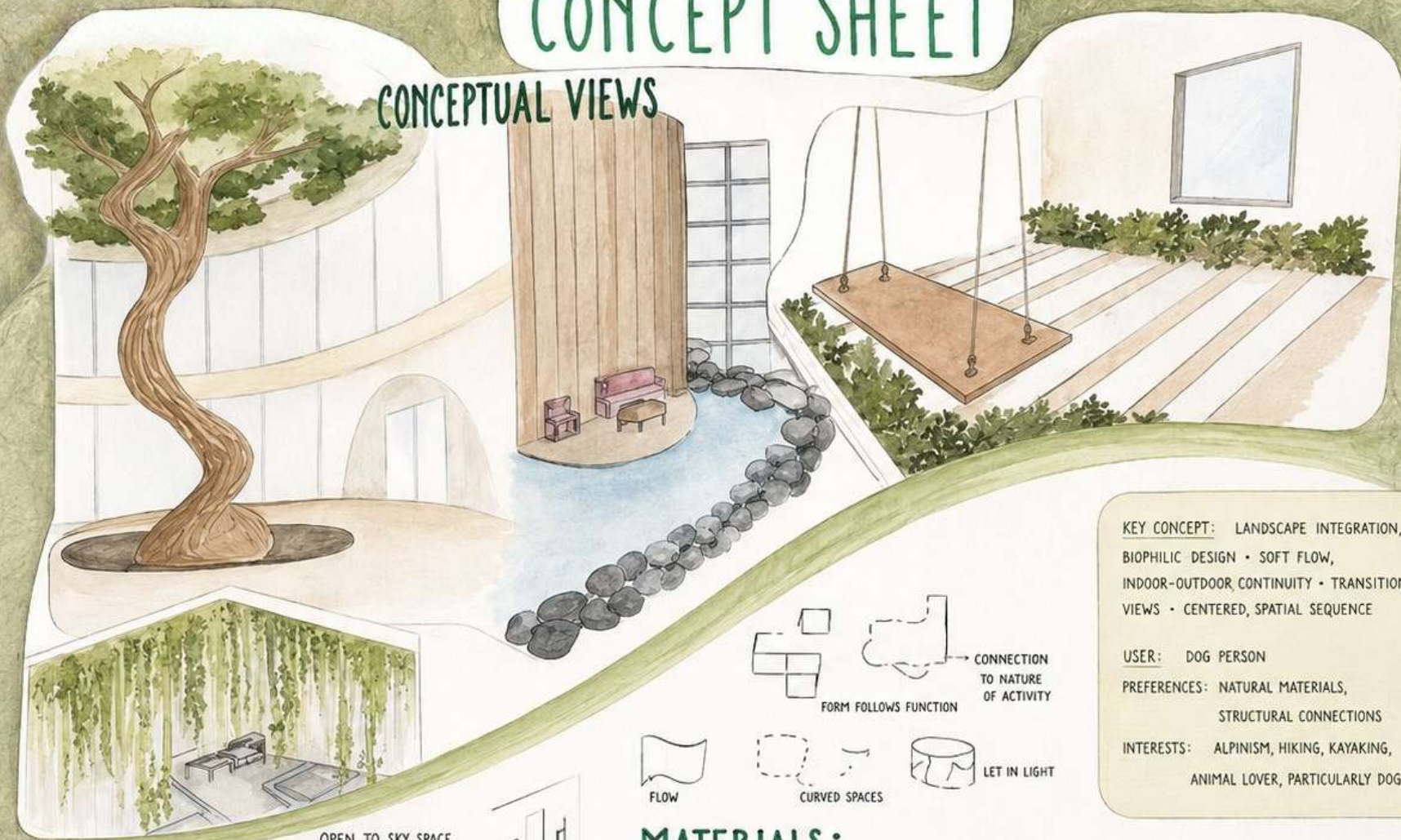
### *Project description:*

*The project aims to stimulate and reward innovative thinking about how a house can be designed to the client. The design should harmonize with the natural environment, incorporate sustainable practices, and demonstrate innovative spatial solutions. It allows you to gain knowledge about design methodologies and functions of spaces. It also involves standards study about the spaces to achieve the required design.*



# CONCEPT SHEET

## CONCEPTUAL VIEWS

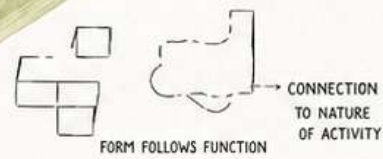


**KEY CONCEPT:** LANDSCAPE INTEGRATION, BIOPHILIC DESIGN • SOFT FLOW, INDOOR-OUTDOOR CONTINUITY • TRANSITION VIEWS • CENTERED, SPATIAL SEQUENCE

**USER:** DOG PERSON

**PREFERENCES:** NATURAL MATERIALS, STRUCTURAL CONNECTIONS

**INTERESTS:** ALPINISM, HIKING, KAYAKING, ANIMAL LOVER, PARTICULARLY DOG

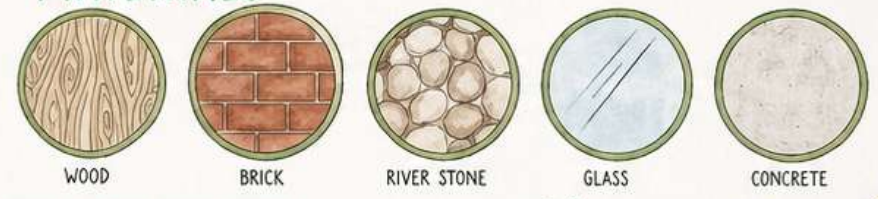


OPEN TO SKY SPACE. A CENTRAL REVEAL

QUIETER, ENCLOSED SPACES PUSHED TO THE PERIPHERY



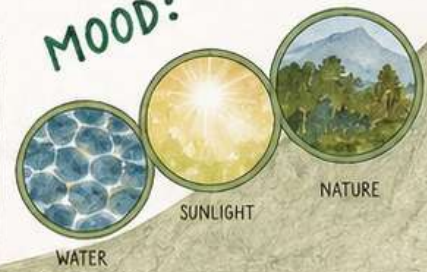
## MATERIALS:



## ADDITIONAL ELEMENTS:



## MOOD:



# SITE PLAN



9M WIDE ROAD

TOWARDS ECR →

# WEEKEND COTTAGE



9M WIDE ROAD

GROUND FLOOR PLAN

TOWARDS ECR →

# WEEKEND COTTAGE



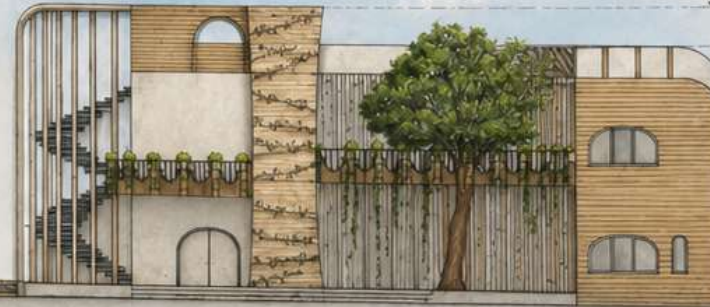
FIRST FLOOR PLAN

SCALE 1 : 100

# SECTION AND ELEVATION



ELEVATION



ELEVATION

EXTERIOR ACCOLATIVE ELEMENT  
+10.25 M  
PARAPET WALL +8.20M  
TERRACE LEVEL +6.25M  
FIRST FLOOR LEVEL +3.60M  
SSL LEVEL +1.20M  
PLINTH LEVEL +0.45M  
PGL 0.00 M



SECTION BB'

PARAPET WALL  
+8.20M  
TERRACE LEVEL  
+6.25 M  
FIRST FLOOR LEVEL  
+3.60 M  
SSL LEVEL +1.20 M  
PLINTH LEVEL +0.45M  
GROUND LEVEL  
0.00 M



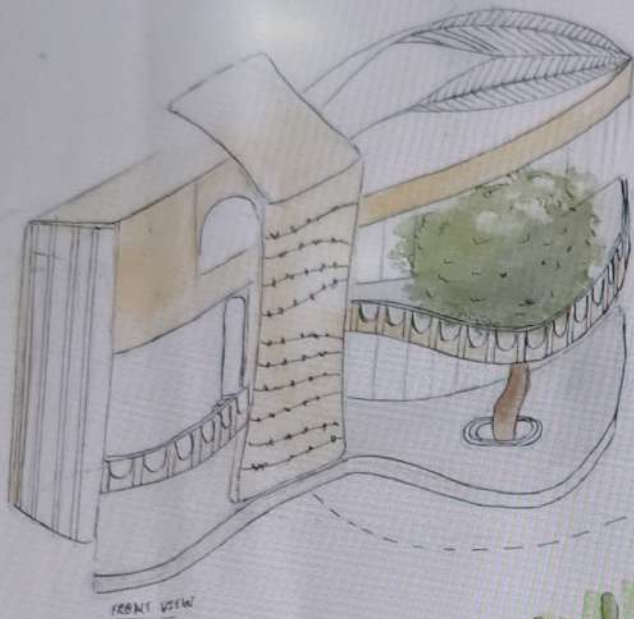
SECTION AA'

PARAPET WALL  
+8.20M  
TERRACE LEVEL  
+6.25 M  
FIRST FLOOR LEVEL +3.60M  
+3.60 M  
SSL LEVEL +1.20M  
PLINTH LEVEL +0.45M  
GROUND LEVEL  
0.00 M





# VIEWS



EXTERNAL DECORATIVE ELEMENT

