

Concept Sheet

USER ANALYSIS

NAME : ZAVON IRFELA

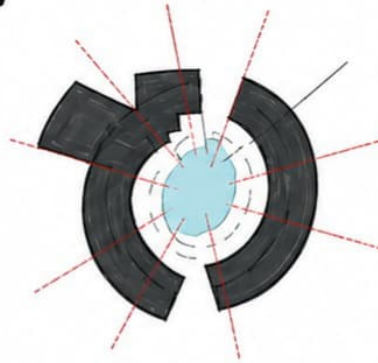
Age : 35

Profession : Orchestral Conductor & Composer

Hobby / Interests : Writing, Composing

He lives a life of intense focus and flow.

Experiencing the pieces & creating captivating retreat that offers spatial sequence and a place to connect piece by piece, room by room.



THE CENTRAL REFRAIN: EVERYBODY LOOKS AT THE HEART OF THE HOUSE.

The Focus (Courtyard) sits as a melody moves through a score. The user moves in community, loop through, and expands into the private, creating a leading transitional flow back to room.

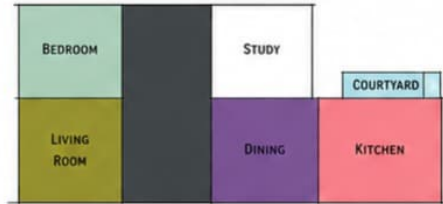
CONCEPT : MUSIC-INOTION



THE SILENCE

About the silent spaces which allow the conductor and music to breath.

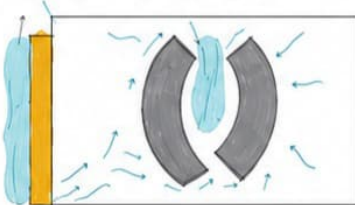
Silence, in music, is not empty, nothing is experienced. It has the same power (give space) as the sound –
The Pauses.



CRESCENDO

The experience is in a composed (Piano) small space that expands into (Forte) long (Grandio) double-height living, rising towards the sky.

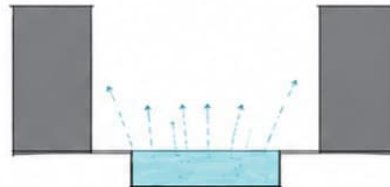
CROSS VENTILATION



The curve guides the wind into every rooms functioning like notes in the air, just as the pauses introduce flow to create sound. The wind flows through your compose corridor.

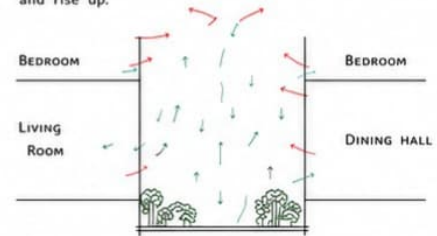
THERMAL REST

As the hot air enters the centre of the house, it rises and cools the pool water. The evaporates, cooling the air and eases itself in the bedroom and living space.



VERTICAL AIRFLOW

The vertical courtyard acts as a chimney. Hot air rises inside the room & draws into courtyard and rise up.



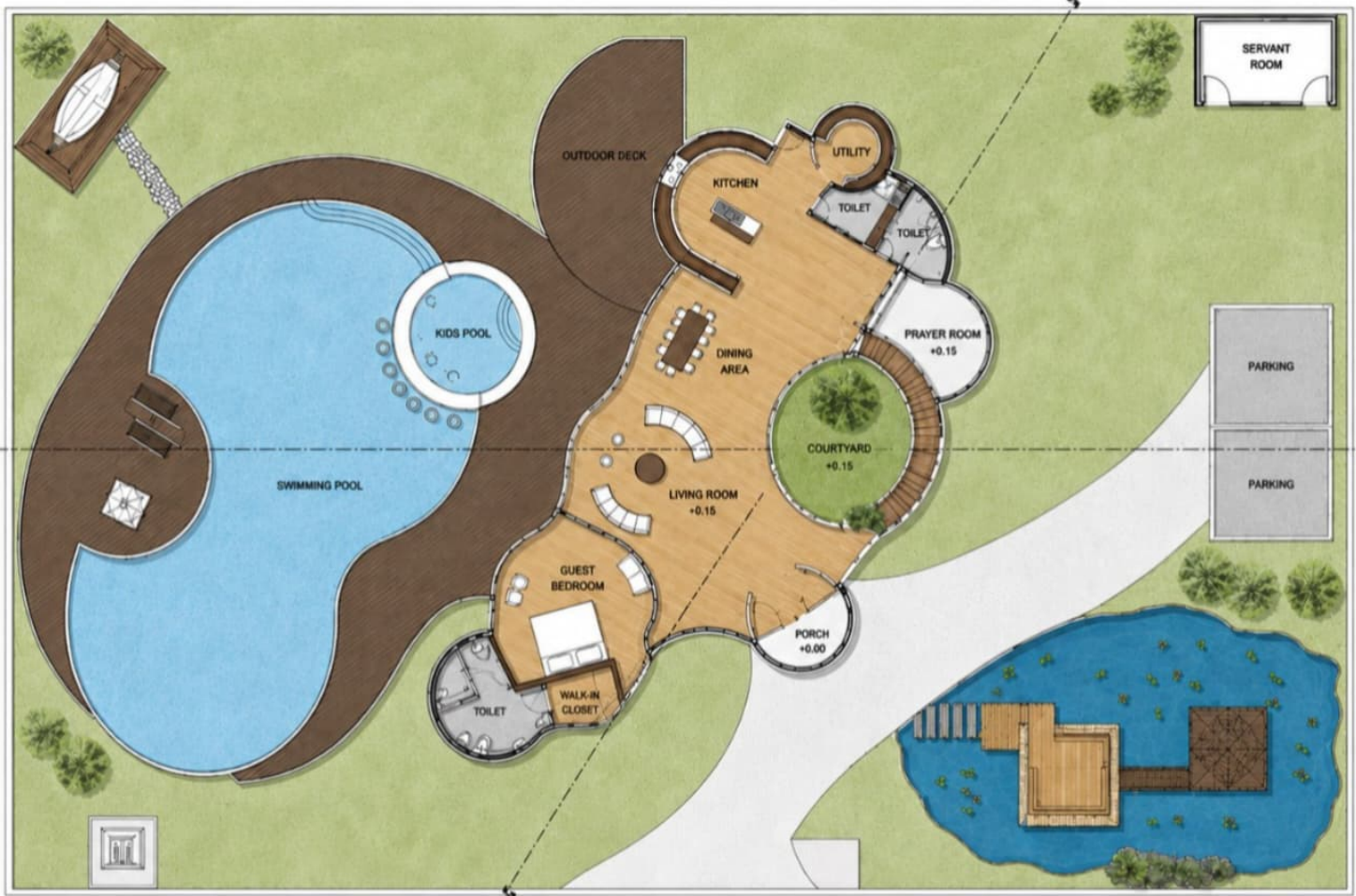
H. SAFANA ALIYA
250101601092
ARCHITECTURAL DESIGN STUDIO II

WEEKEND COTTAGE

GROUND FLOOR PLAN



← BEACH
A

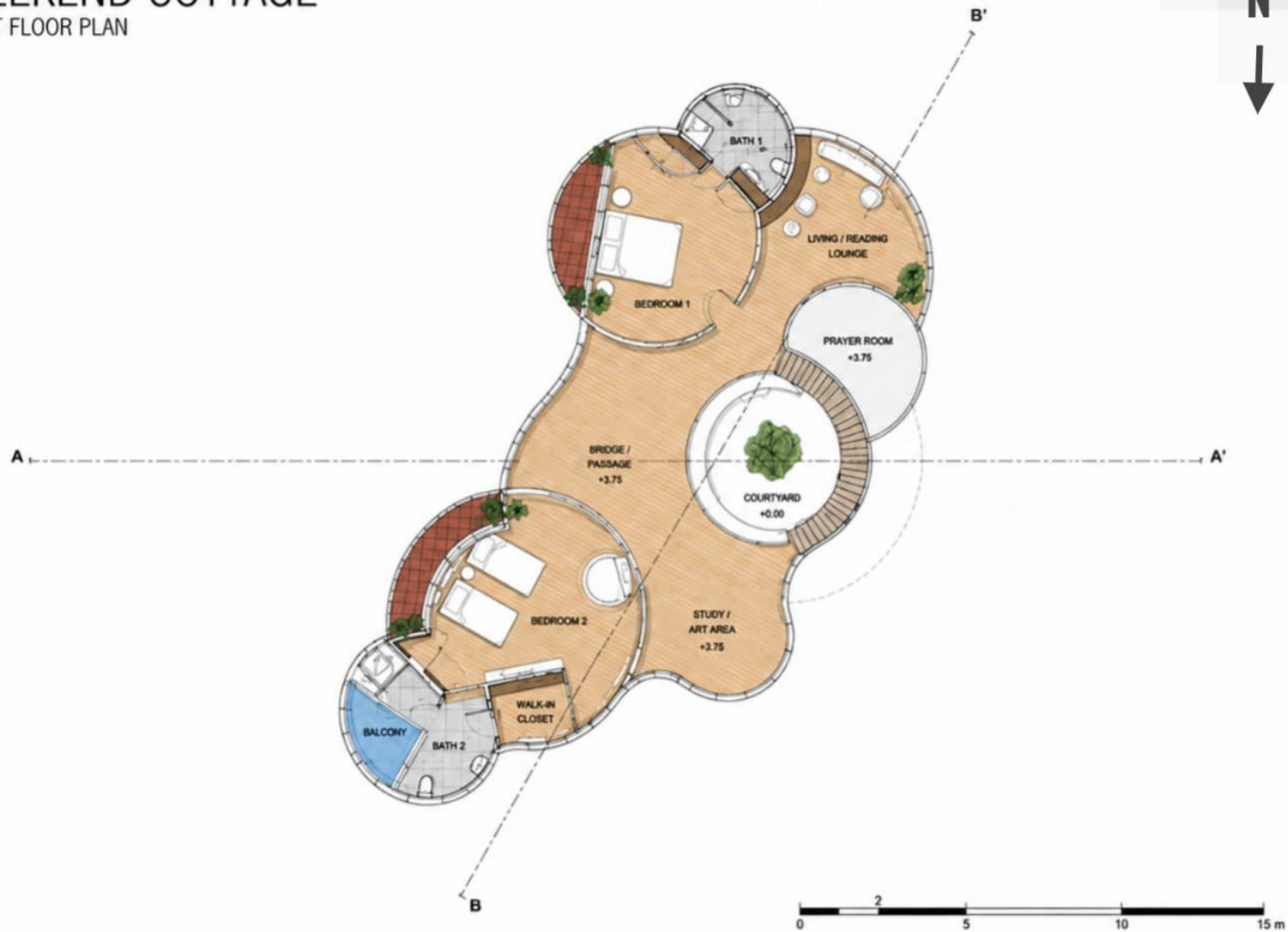


A'



WEEKEND COTTAGE

FIRST FLOOR PLAN



WEEKEND COTTAGE

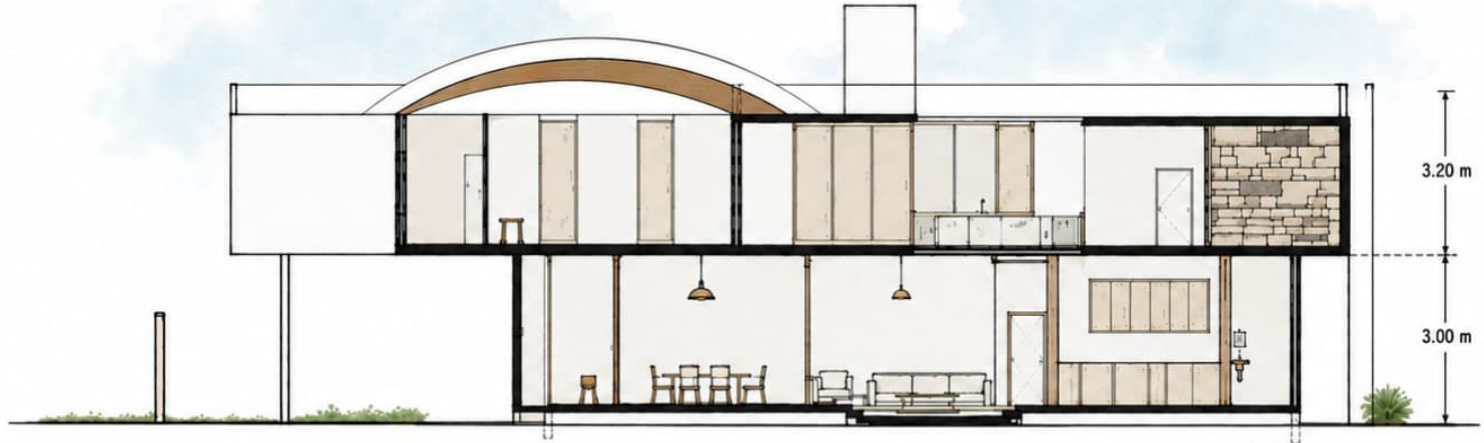
SITE PLAN



WEEKEND COTTAGE

SECTIONS

SECTION AA'



SECTION BB'

