

# SITE ANALYSIS

## “ARSENAL MEMORY PARK”

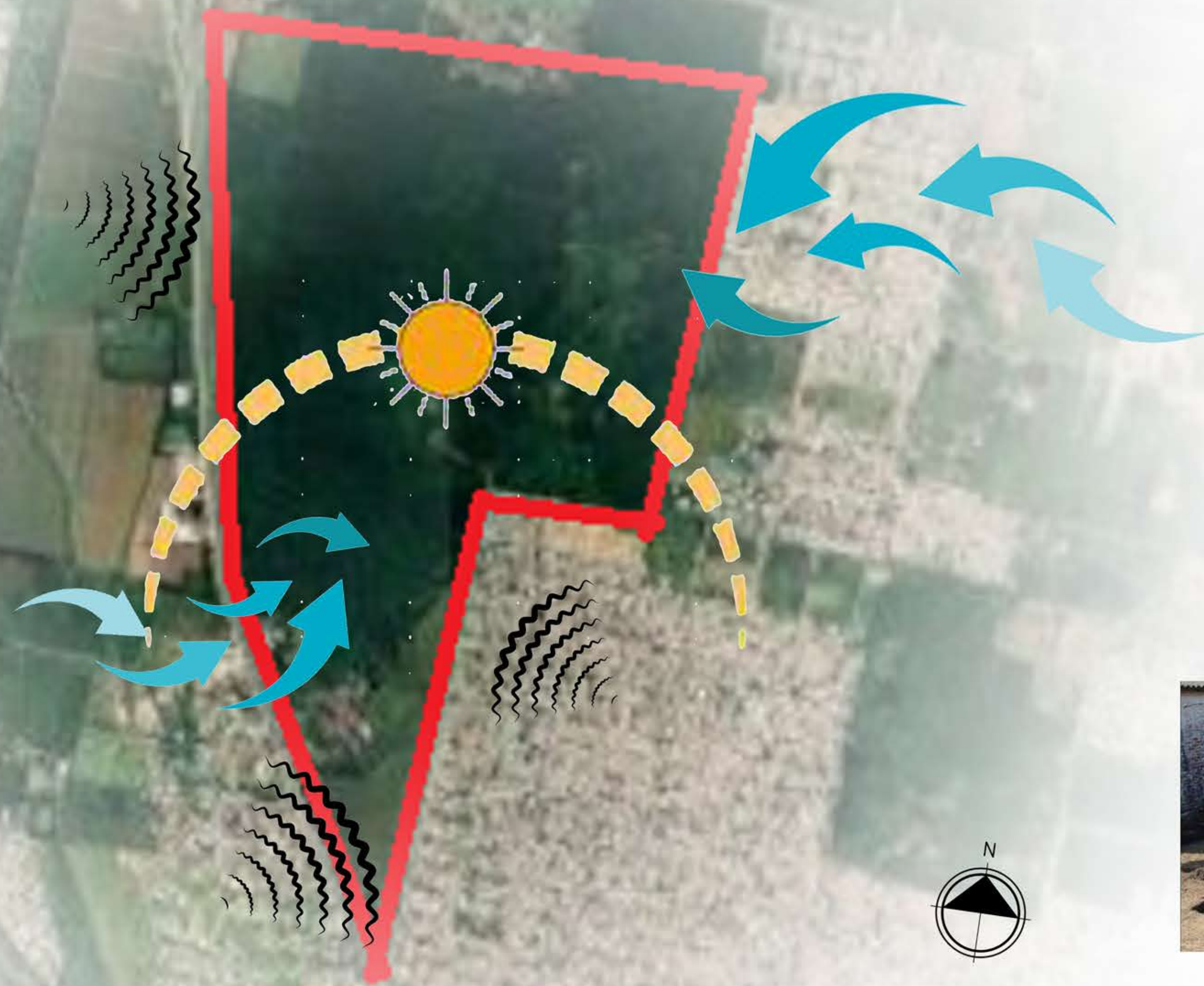
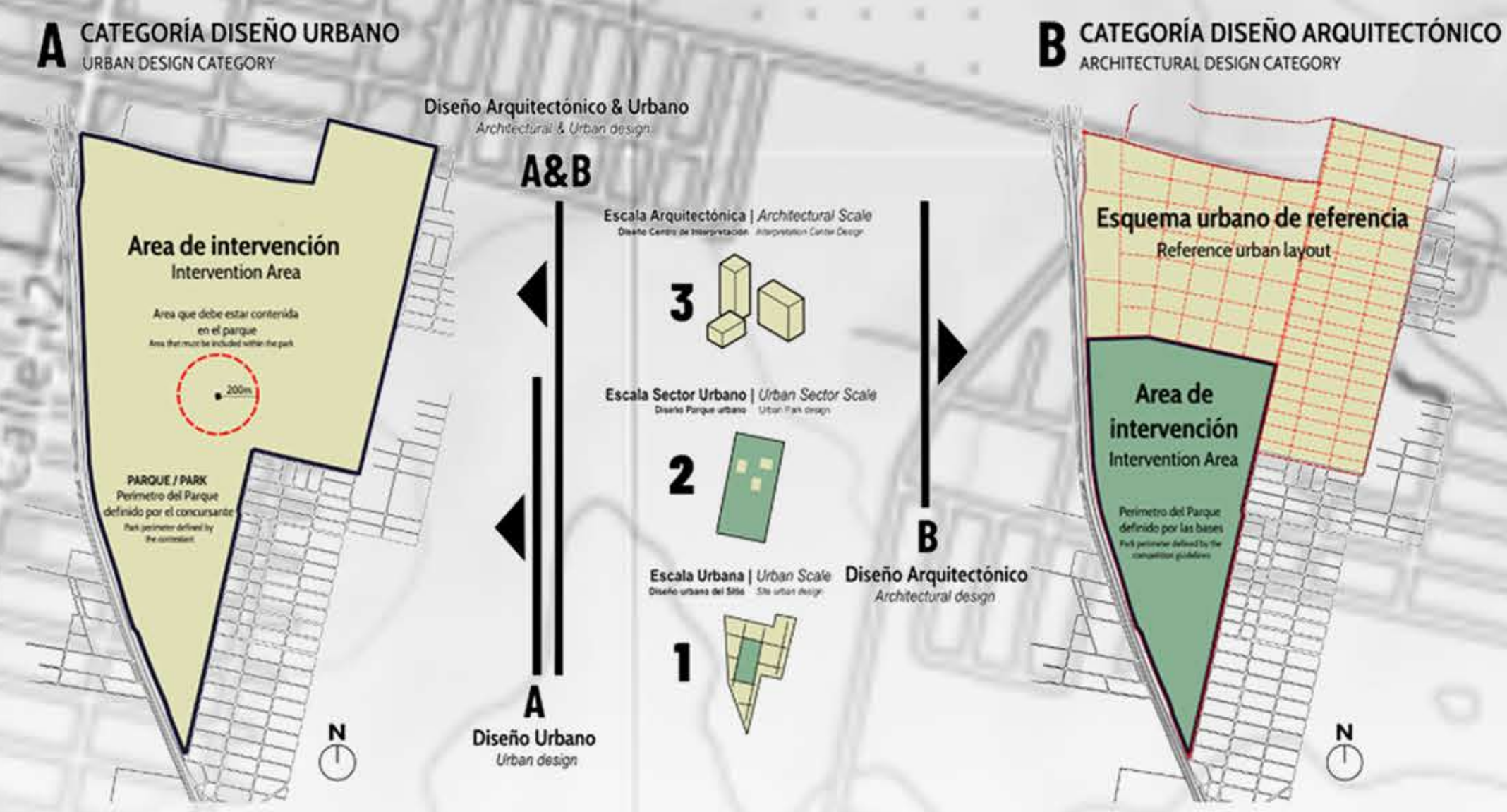
**LOCATION:** SAN MIGUEL DE TUCUMÁN  
**COUNTRY:** ARGENTINA  
**SITE AREA:** 350 HECTARES (VERY LARGE SITE)  
**PREVIOUS USE:** MILITARY ARSENAL (ARMY BASE)

### Climate Type

Subtropical Humid Climate

### Temperature

- Summers: Hot (approx. 30–40°C)
- Winters: Mild (approx. 10–20°C)



### HISTORICAL & CULTURAL ANALYSIS

#### Past Use

- 1976–1978:
- Clandestine detention center
- Torture & execution happened ☒

#### Key Elements

- Galpón 9 (Main detention building)
- Mass graves (identified + unidentified)
- Barracks buildings

#### Restrictions

- 200m radius zone = Protected / sensitive area

#### Concept line:

“A site of memory, trauma, and remembrance.”

### URBAN CONTEXT ANALYSIS

#### Surroundings

- Located in northern metropolitan region
- City has:
- Rapid growth
- Unplanned urban sprawl

#### Urban Issues

- Site is acting as a:
- Barrier / dead zone
- Disconnected land parcel

#### ACCESS & CONNECTIVITY

- Major road: Route 9 (high-speed corridor)
- Connects directly to:
- City center
- Future development zones



### EXISTING STRUCTURES ANALYSIS

#### To be PRESERVED

- Barracks
- Administration building
- Workshops
- Guard posts
- Water tower

### CIRCULATION ANALYSIS

#### Existing

- Internal:
- Road network (military planning)
- Pedestrian + vehicular paths

### GEOGRAPHICAL CONTEXT

- The site is located at the foothills of the Andes Mountains (towards the west).
- The site acts as a transition zone between natural terrain and urban expansion.

### TOPOGRAPHY

#### Landform

- Predominantly flat to gently sloping terrain.

### RAINFALL

- Heavy rainfall during summer months
- Comparatively dry winters
- The site functions as a runoff retention area

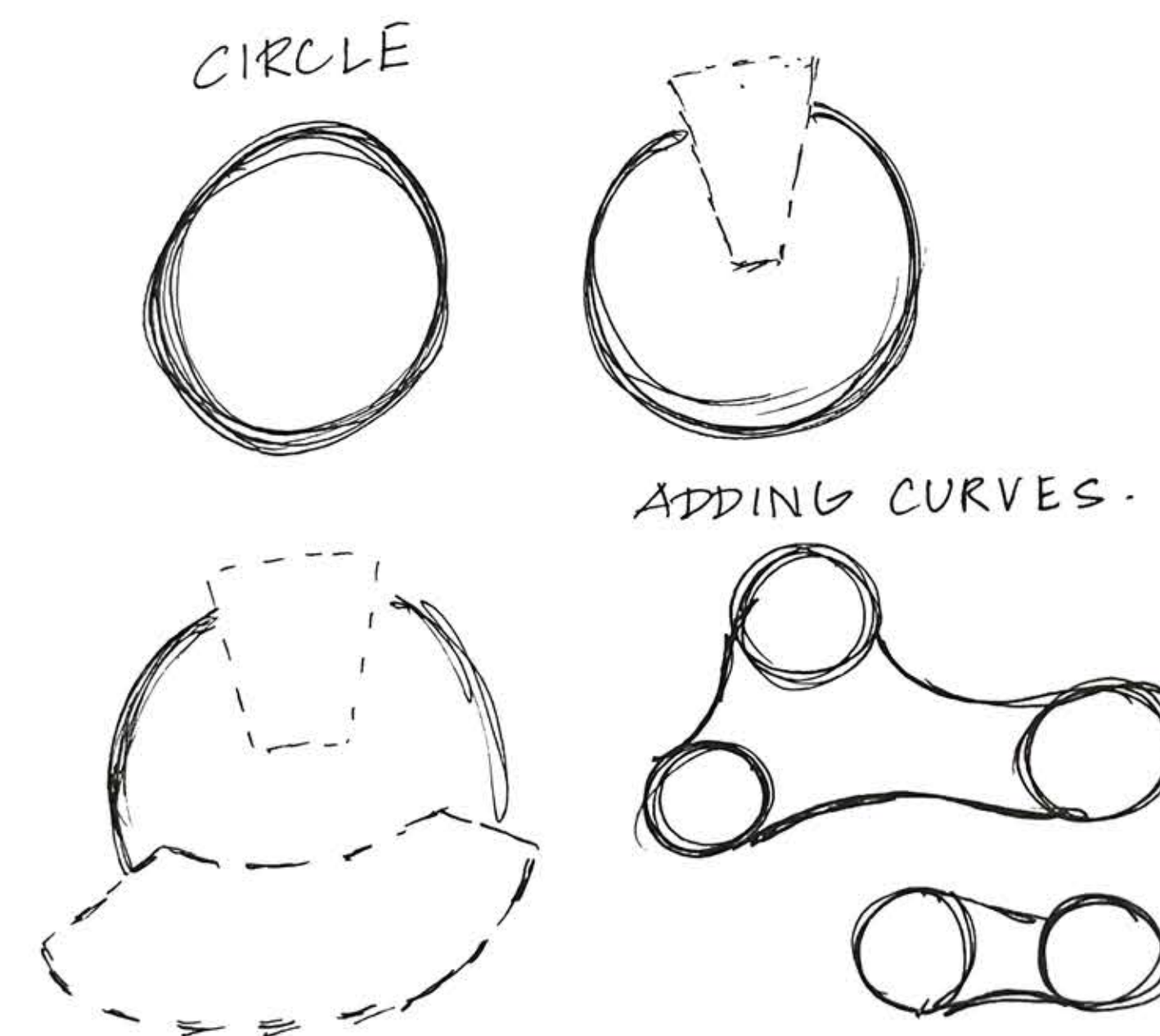
#### Water Behavior

- Natural drainage patterns present
- Possibility of:
- Water stagnation
- Flooding

## FORM DEVELOPMENT

The project form is derived from the circle, symbolizing remembrance, respect, and continuity. Inspired by the 200-meter mass grave radius, the geometry acknowledges the invisible history embedded within the site.

The circular layout creates a seamless spatial journey through the memorial experience. It reinforces memory as an ongoing collective process rather than a fixed or closed narrative.



### 1. THE SILENT SPACE ( DARK)

Entry plaza is minimal and quiet darkness dominate architecture

### 2. THE MEMORY PLAZA (WHERE DARK MEETS THE LIGHT)

Memorial gallery space  
 Collective remembrance  
 Public gathering

### 3. The Voice Space ( LIGHT)

AUDIO VISUAL ROOM  
 Meaning:  
 Voices that were once silenced are now heard.

## CONCEPT

RESONANCE : something feels very meaningful to you or matches your feeling

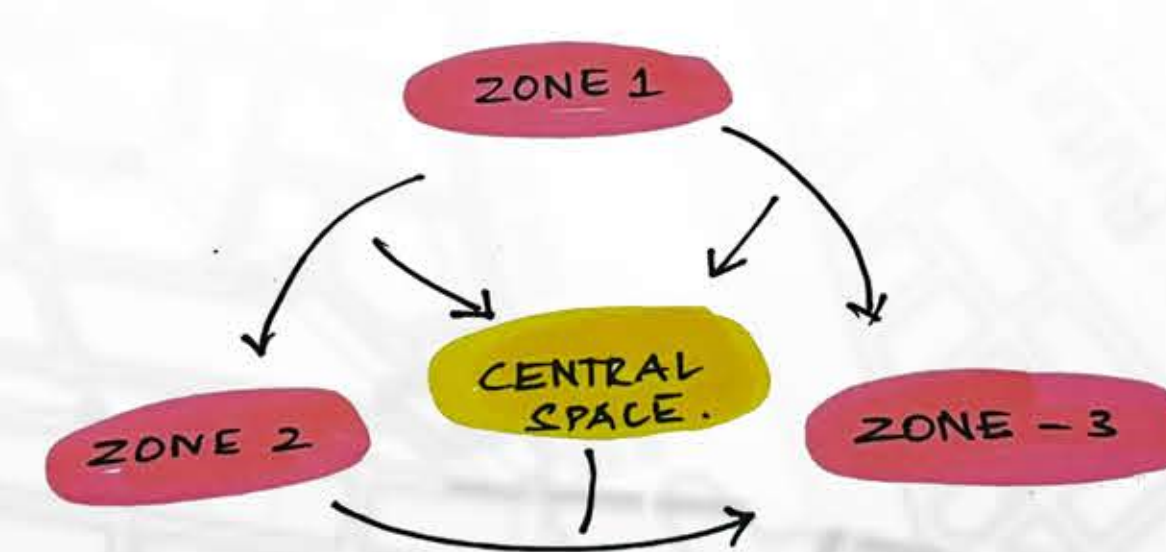
## PROJECT DESCRIPTION

The project proposes an Interpretation Center within the Arsenal Memory Park in San Miguel de Tucumán, transforming a site of trauma into a space for remembrance and healing. Once used as a clandestine detention and torture center during the 1976–1978 military dictatorship, the site holds deep historical significance.

The design preserves key elements such as Galpón 9, the barracks, and nearby mass grave zones as memorial anchors. The intervention aims to promote collective memory, education, reflection, and public awareness.

## PROJECT IDEA

The project creates a spatial journey of memory, guiding visitors from silence and hidden trauma toward awareness, reflection, and collective healing.



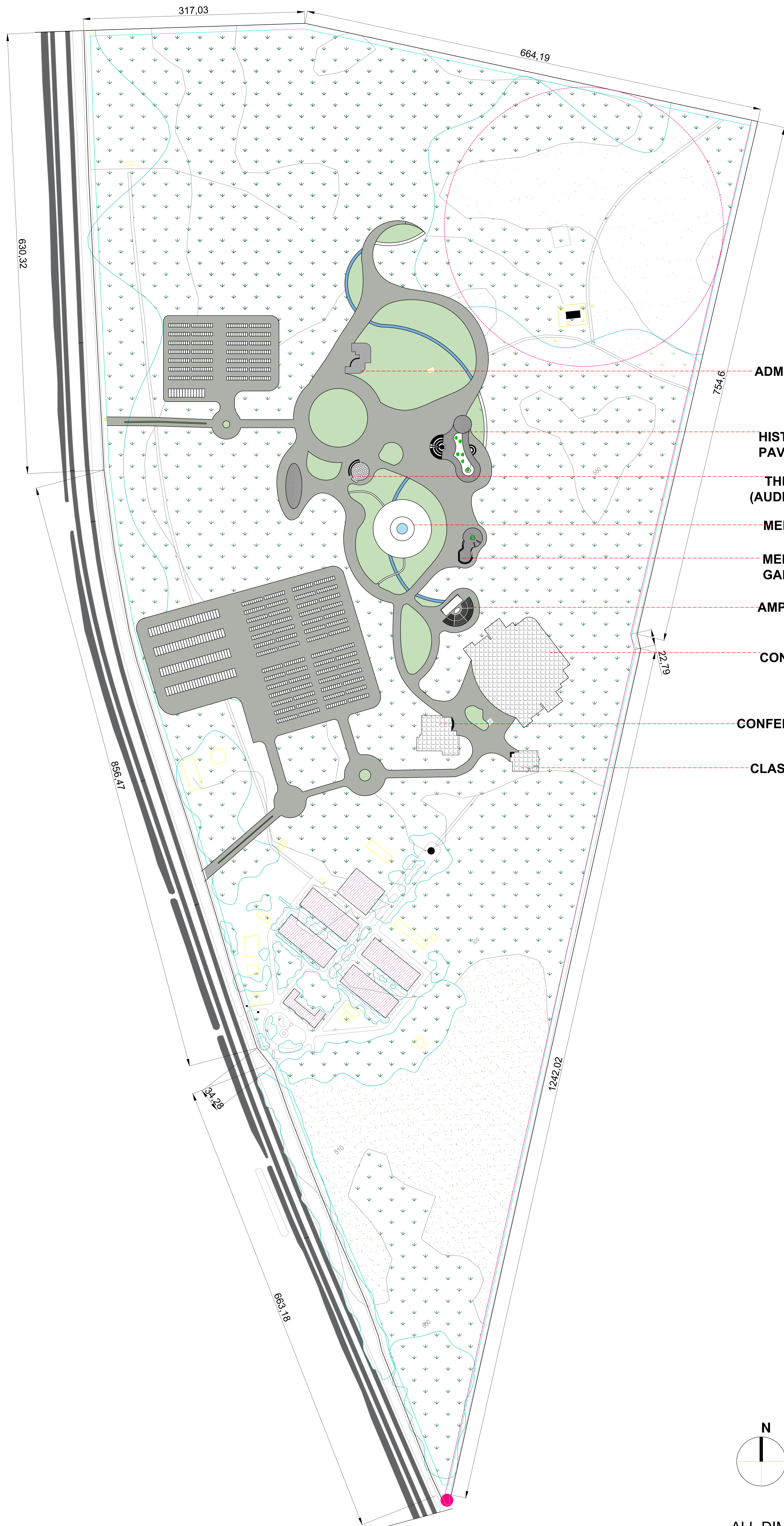
Through a sequence of controlled spaces and gradual openness, the

design symbolizes the transition from buried truths to acknowledged history.

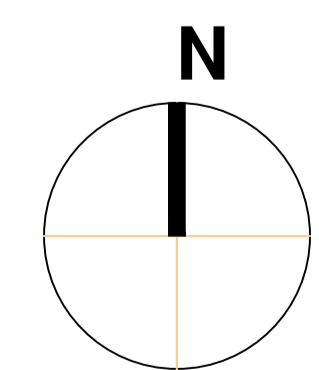
## INTERPRETATION CENTER

## CONCEPT AND SITE ANALYSIS

NAME SHAKTHI PRIYA R  
 RRN 230101601066  
 B- ARCH B- SEC



- ADMINISTRATION BUILDING
- HISTORICAL EXHIBITION PAVILION
- THE VOICE (AUDIO VISUAL )
- MEMORY PLAZA
- MEMORIAL ART GALLERY
- AMPHITHEATRE
- CONCERT HALL
- CONFERENCE ROOM COMPLEX
- CLASSROOM COMPLEX



119.7 HECTARE  
 295.8 ACRE  
 1196768.7 SQ.M

ALL DIMENSIONS ARE IN METER

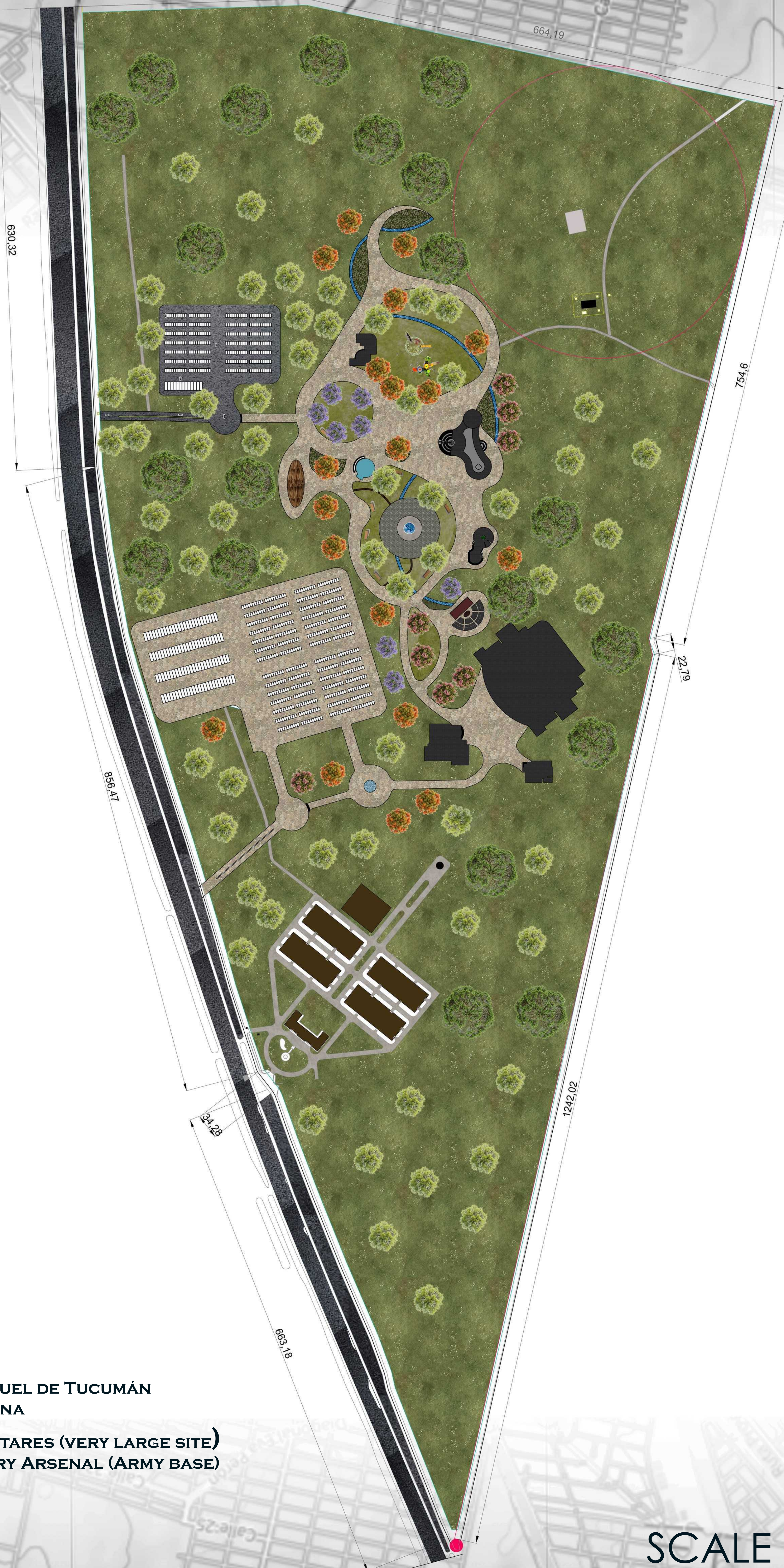
SCALE : 1:2000

NAME : SHAKTHI PRIYA . R

RRN : 230101601066

# INTERPRETATION CENTER SITE PLAN

# “ARSENAL MEMORY PARK”



LOCATION : SAN MIGUEL DE TUCUMÁN  
COUNTRY: ARGENTINA

SITE AREA: 350 HECTARES (VERY LARGE SITE)  
PREVIOUS USE: MILITARY ARSENAL (ARMY BASE)

INTERPRETATION CENTER

SITE PLAN RENDER

SCALE : 1-2000

NAME SHAKTHI PRIYA R  
RRN 230101601066  
B- ARCH B- SEC