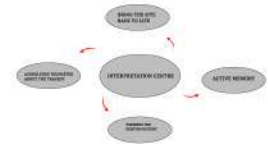


CONCEPT

"The Architecture of Resilience"

PROJECT REQUIREMENT:

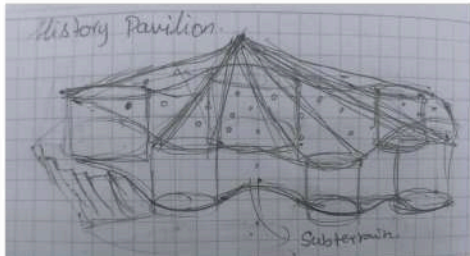
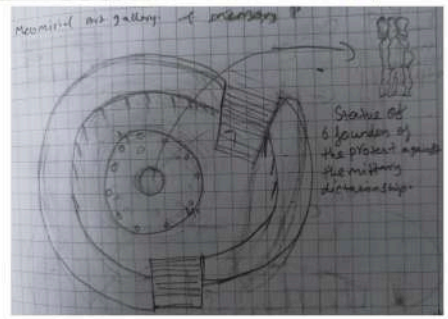
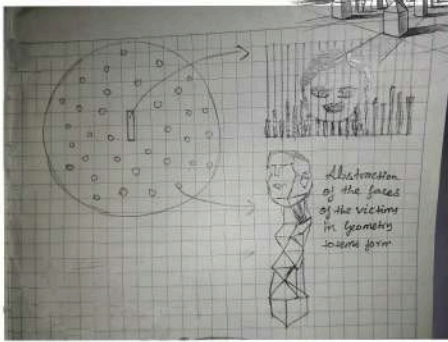
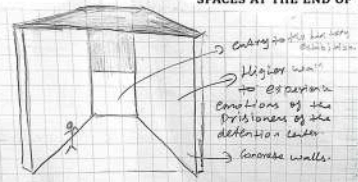
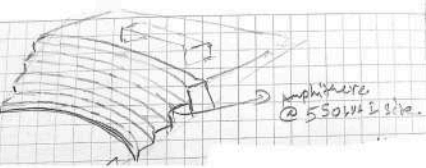
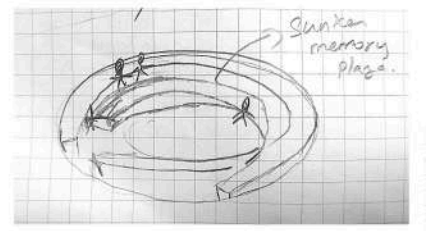


THE CORE IDEOLOGY OF THIS CONCEPT IS CONTINUITY THROUGH EVOLUTION. INSTEAD OF VIEWING THE PAST AND THE FUTURE AS SEPARATE ENTITIES, THIS DESIGN TREATS HISTORY AS A FOUNDATION THAT SUPPORTS NEW GROWTH. BY PRESERVING THE EXISTING BARRACKS AND GALPÓN 9 EXACTLY AS THEY ARE, THIS DESIGN ACTS AS A "SCAFFOLDING" OR A "WITNESS" THAT FRAMES THE HISTORY WITHOUT ENCROACHING UPON IT.



TO AVOID A TRAUMATIC EXPERIENCE, THE INTERPRETATION CENTER AND ITS COMPLEMENTS SHOULD NOT SIT HEAVILY ON THE GROUND OF THE FORMER DETENTION CENTER. INSTEAD, USE A DESIGN LANGUAGE OF LIGHTNESS AND TRANSPARENCY. ELEVATED PATHWAYS: USING ELEVATED, BRIDGE-LIKE STRUCTURES TO CONNECT THE BUILDINGS. THIS CREATES A LITERAL "FLOW OF CONTINUITY" WHERE VISITORS CAN OVERLOOK THE HISTORICAL SITE FROM A PERSPECTIVE OF SAFETY AND REFLECTION, RATHER THAN BEING TRAPPED WITHIN IT. FROM DARKNESS TO LIGHT: THE USER EXPERIENCE SHOULD FOLLOW A SPATIAL NARRATIVE THAT MOVES FROM THE HEAVY, ENCLOSED PAST TO AN OPEN, COMMUNAL FUTURE.

CELEBRATE THE RESILIENCE OF THE PEOPLE AND THE VIBRANCY OF CURRENT CULTURE.



THE THRESHOLD (THE PAST): THE ENTRANCE TO THE INTERPRETATION CENTER STARTS NEAR THE PRESERVED GALPÓN 9. THE ARCHITECTURE HERE SHOULD BE SUBTLE, PERHAPS SEMI-SUBTERRANEAN OR TEXTURED TO MATCH THE EXISTING BRICKWORK, SERVING AS A QUIET "INTRODUCTORY" SPACE.

THE TRANSITION (THE BRIDGE): AS VISITORS MOVE THROUGH THE MEMORIAL ART GALLERY, THE ARCHITECTURE SHOULD GRADUALLY OPEN UP WITH GLASS WALLS AND VIEWS OF THE URBAN PARK, SYMBOLIZING THE TRANSITION INTO A DEMOCRATIC AND FREE SOCIETY.

THE PINNACLE (PRIDE): THE CONCERT HALL AND ACADEMIC COMPLEX SHOULD BE THE MOST MODERN, TECHNOLOGICALLY ADVANCED PARTS OF THE SITE. BY PLACING THESE "ACTIVE MEMORY" SPACES AT THE END OF THE JOURNEY, YOU

SITE ANALYSIS

ARSENAL PARK - ARGENTINA



TOTAL OPEN AREA REQUIRED	26800 SQM
TOTAL COVERED AREA REQUIRED	13500 SQM
TOTAL	40300 SQM

CORE MISSION OF THE SITE:

PRESERVING HISTORY THE PROJECT MUST BE AROUND THE ORIGINAL REMAINS OF THE CLANDESTINE AND DETENTION CENTRE.

MUST PROTECT ZONES :
YOU CANNOT DESTROY THE BARRACK AND THE GALPÓN 9 (DETENTION AREA) OR THE MASS GRAVE SITE

OPTIONAL RECONSTRUCTIONS :

YOU HAVE THE FREEDOM TO REBUILD THE LOST EVENTS LIVE GALLERY POST TORTURE ROOMS OR FENCES TO SHOW HOW THE CRITICAL FACILITY FUNCTIONED

EXISTING VEGETATION

THE SITE HAS NATURAL VEGETATION CONSISTING OF GRASSLANDS AND SCATTERED NATIVE TREES DUE TO LONG-TERM ABANDONMENT.

EXISTING VEGETATION

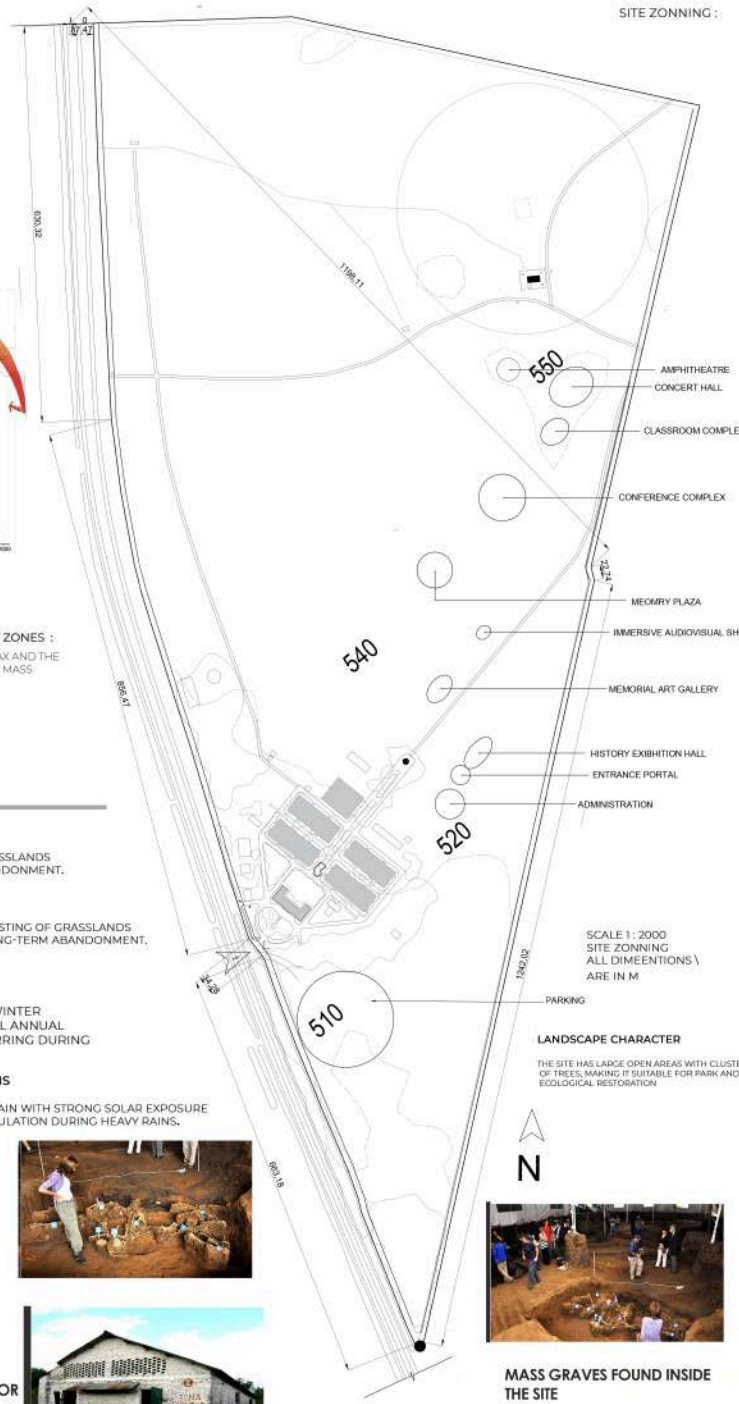
THE SITE HAS NATURAL VEGETATION CONSISTING OF GRASSLANDS AND SCATTERED NATIVE TREES DUE TO LONG-TERM ABANDONMENT.

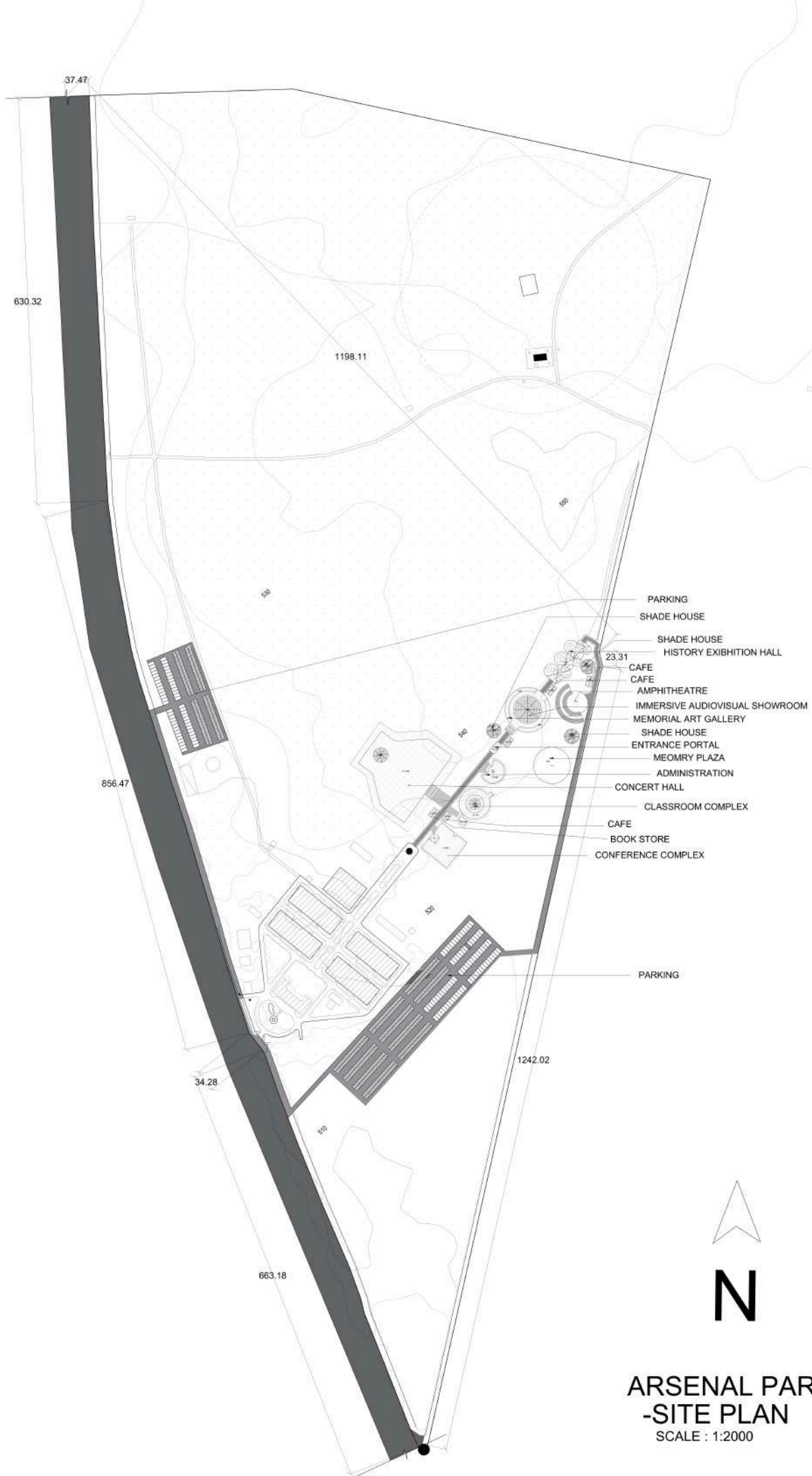
TEMPERATURE RANGE

SUMMER TEMPERATURES REACH 30-38°C, WHILE WINTER TEMPERATURES RANGE BETWEEN 10-22°C. RAINFALL ANNUAL RAINFALL IS AROUND 900-1200 MM, MAINLY OCCURRING DURING THE SUMMER SEASON.

MICROCLIMATE CONDITIONS

THE SITE IS MOSTLY FLAT TERRAIN WITH STRONG SOLAR EXPOSURE AND POSSIBLE WATER ACCUMULATION DURING HEAVY RAINS.

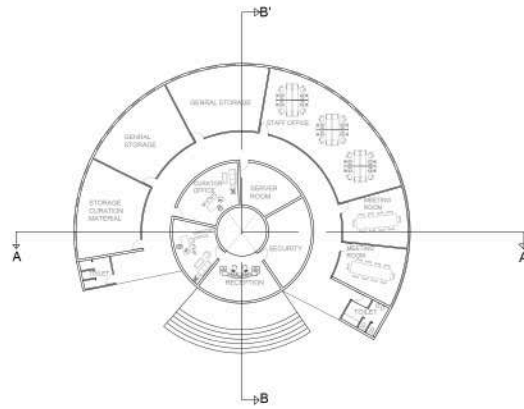
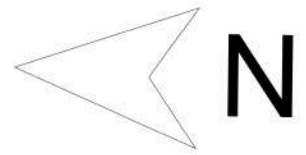




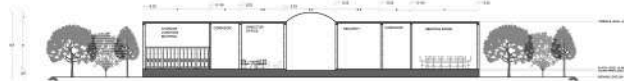
119.7 HECTARE
 295.8 ACRE
 1196768.7 SQ.M

ALL DIMENSIONS ARE IN METER

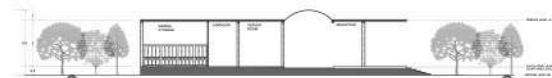
ARSENAL PARK
-SITE PLAN
 SCALE : 1:2000



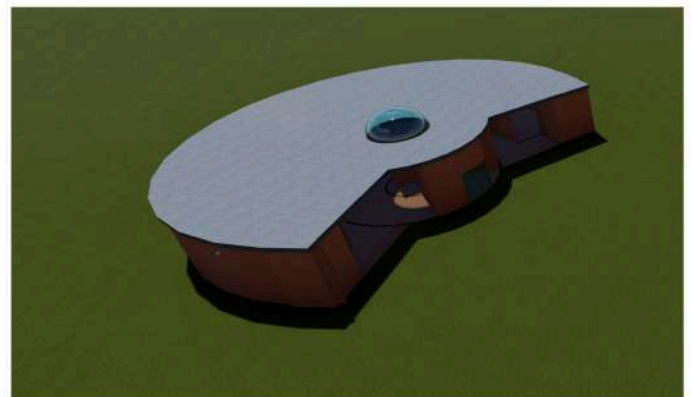
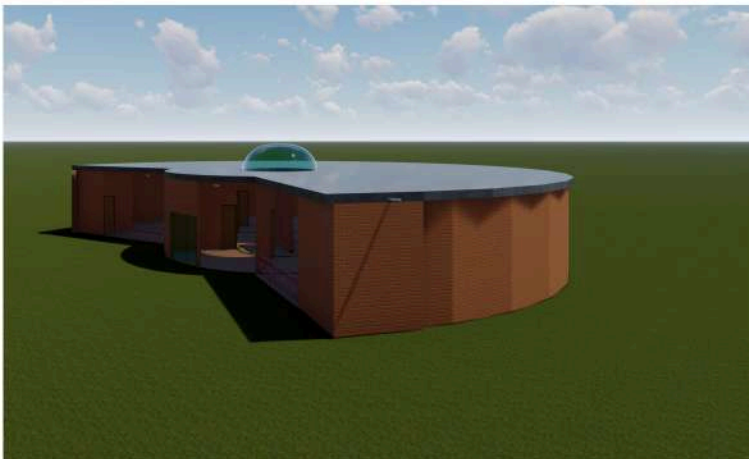
PLAN (1:200)



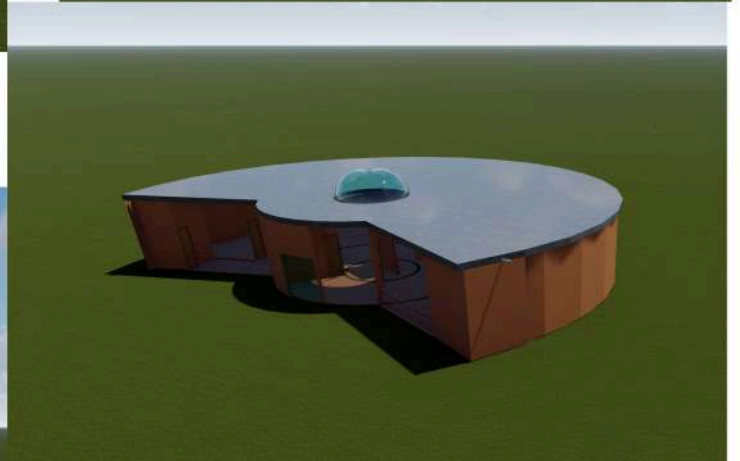
SECTION AA' (1:200)



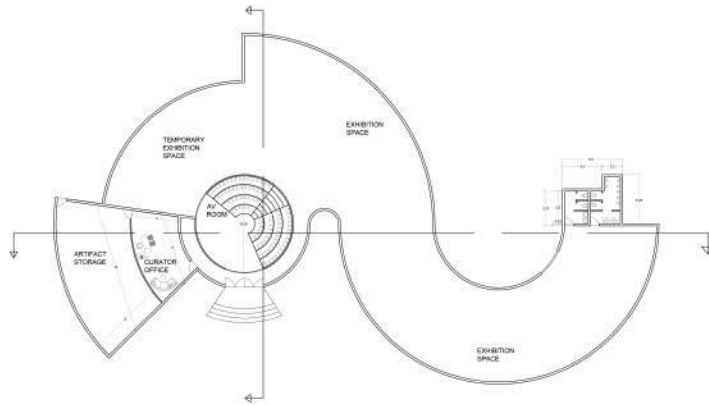
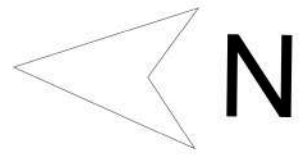
SECTION BB' (1:200)



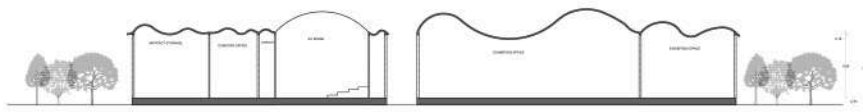
VIEWS



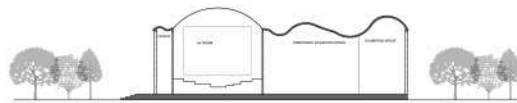
ARSENAL PARK
-ADMINISTRATION
(SCALE - 1:200)



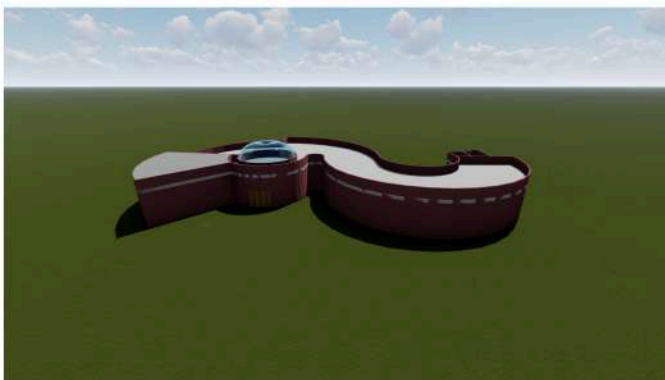
PLAN (1:200)_



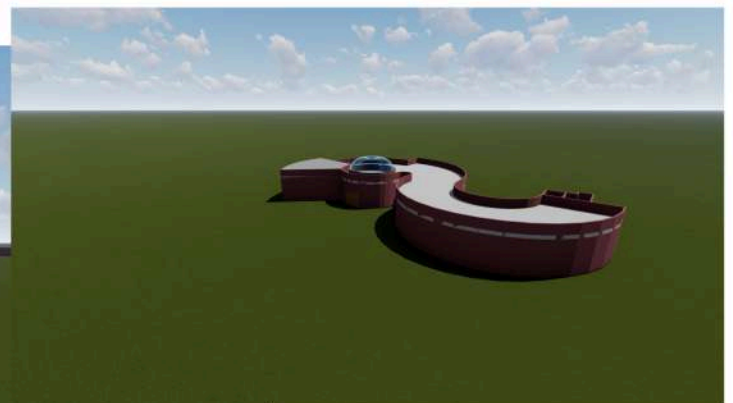
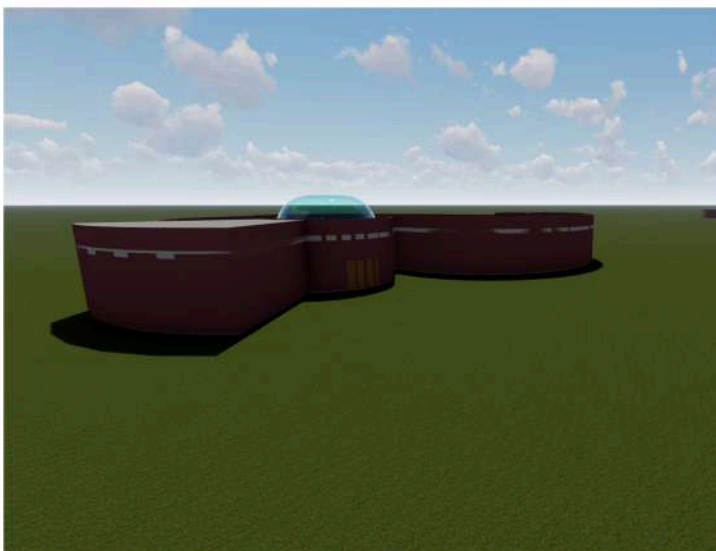
SECTION (1:200)



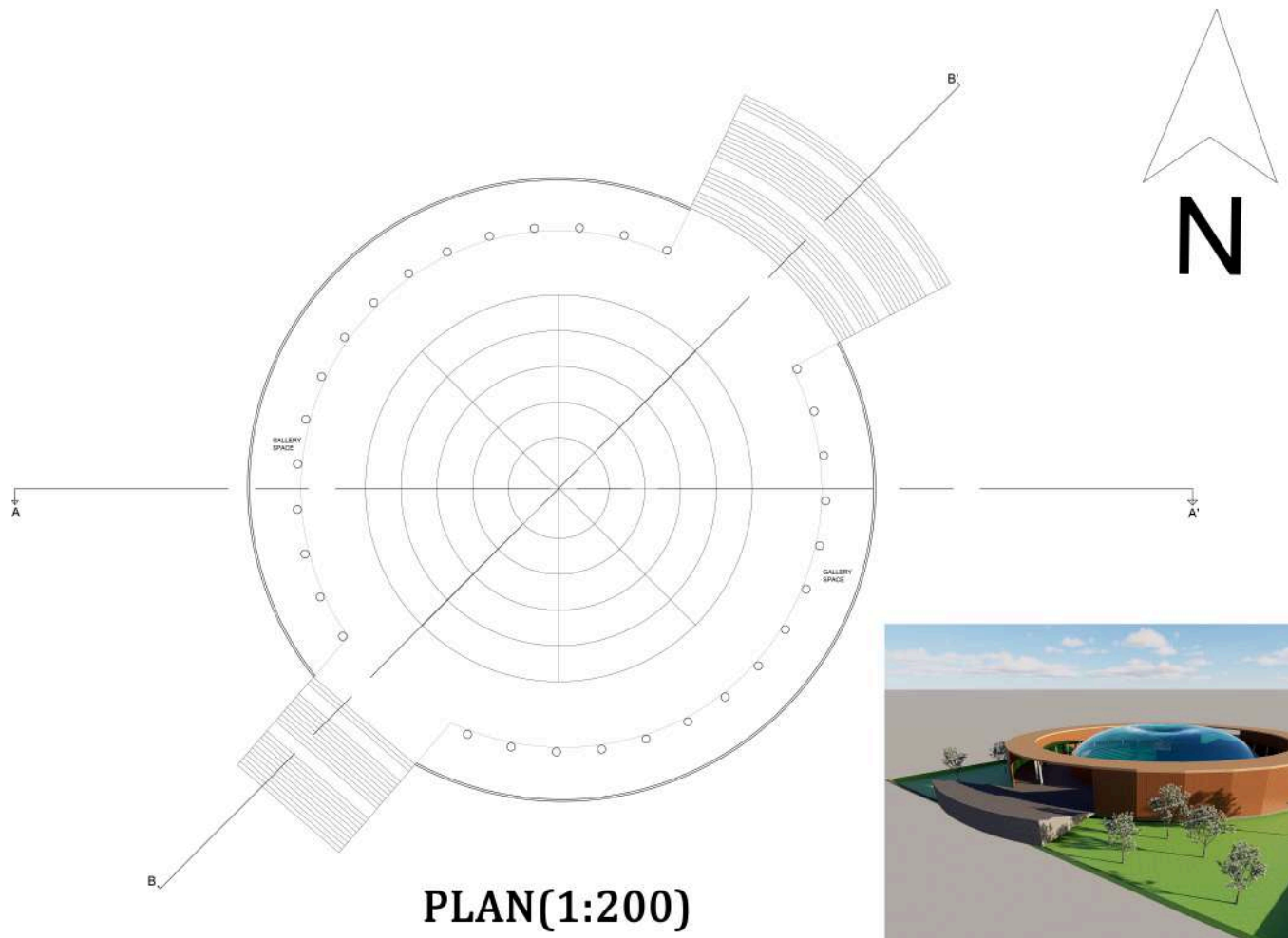
SECTION (1:200)



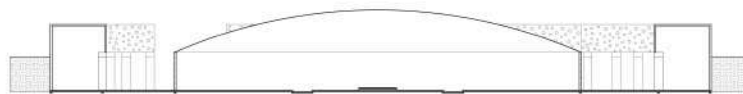
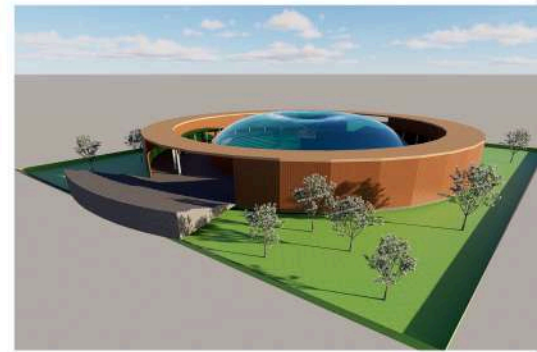
VIEWS



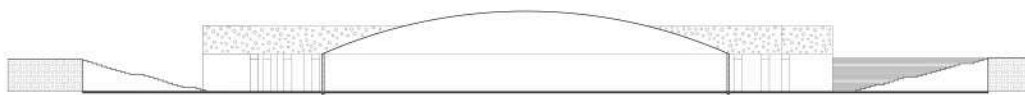
**ARSENAL PARK
-HISTORY EXHIBITION PAVILION
PLAN (SCALE - 1:200)**



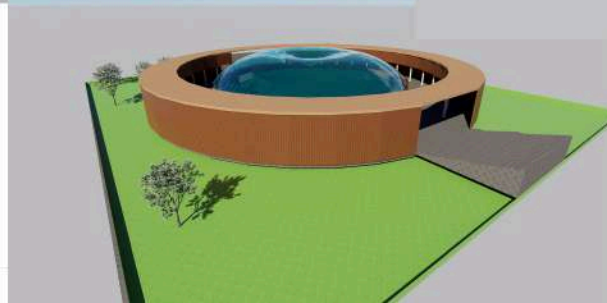
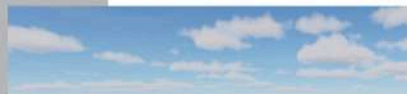
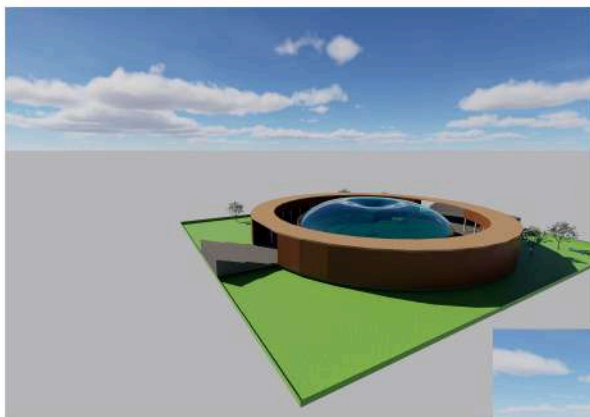
PLAN(1:200)



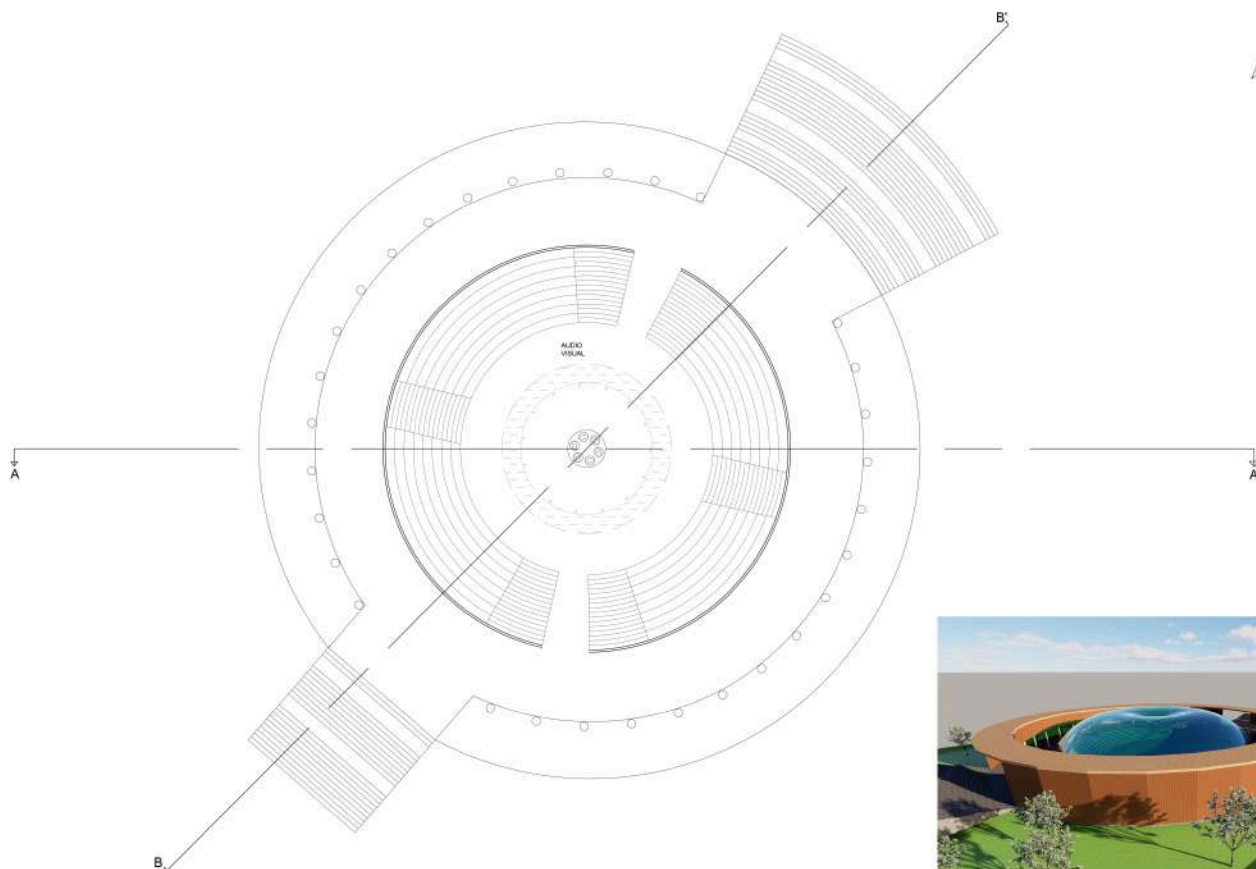
SECTION AA' (1:200)



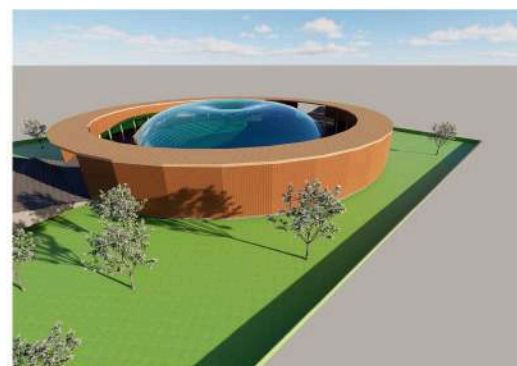
SECTION BB' (1:200)



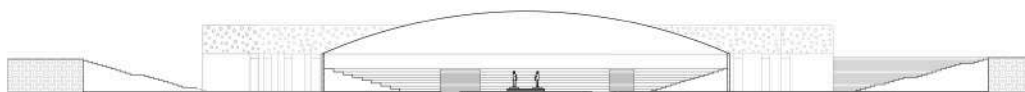
**ARSENAL PARK
-MEMORIAL ART GALLERY**
(SCALE - 1:200)



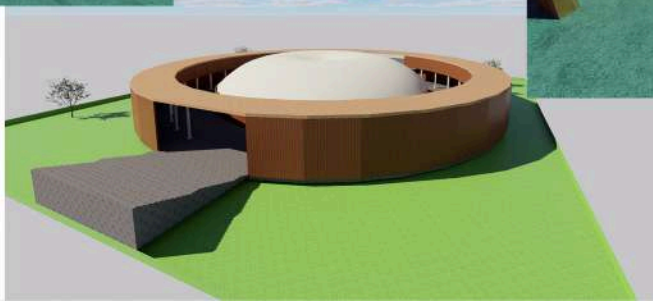
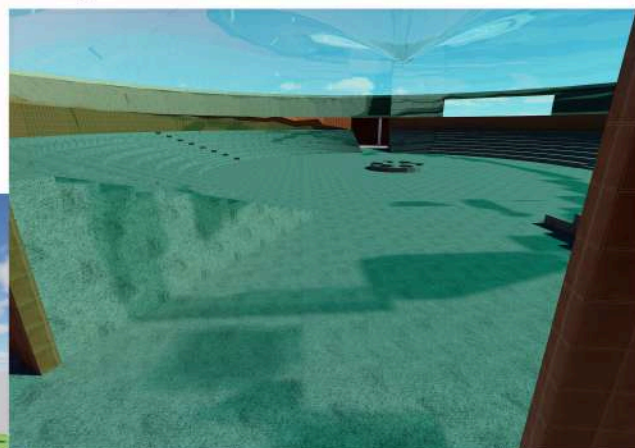
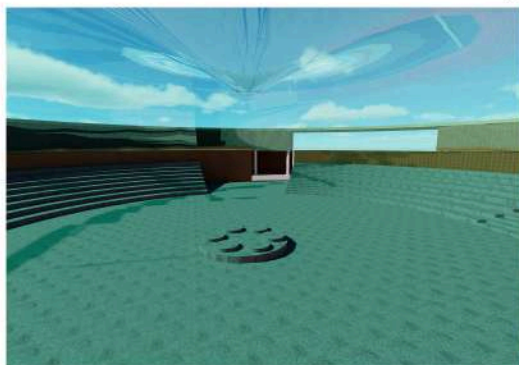
PLAN(1:200)



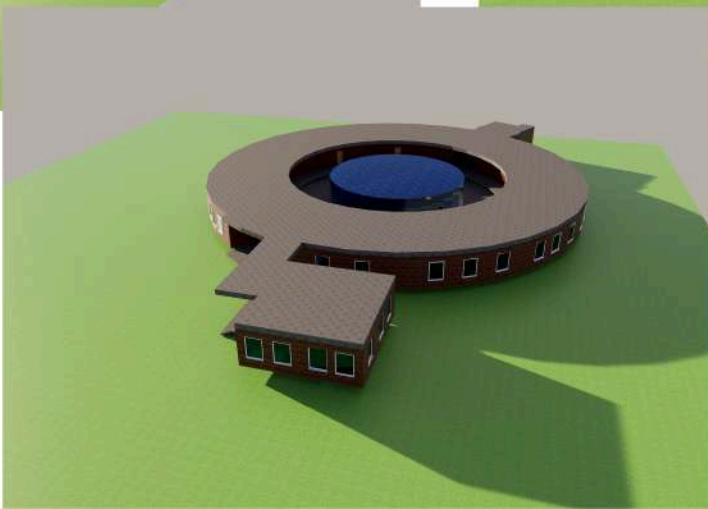
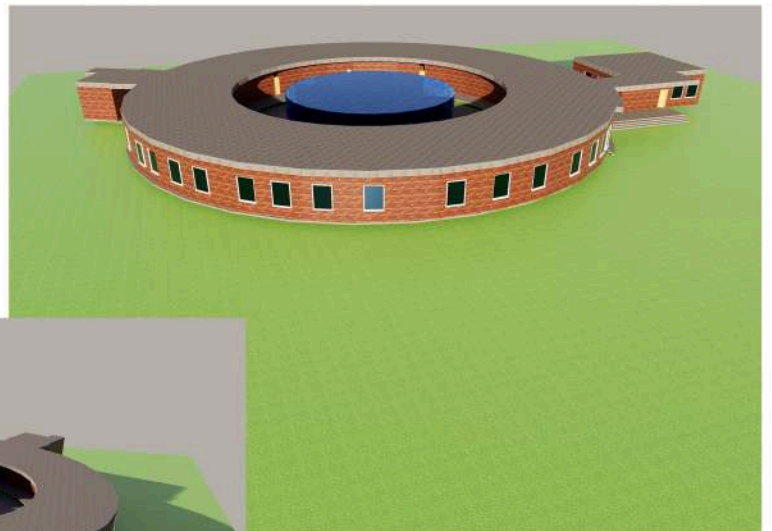
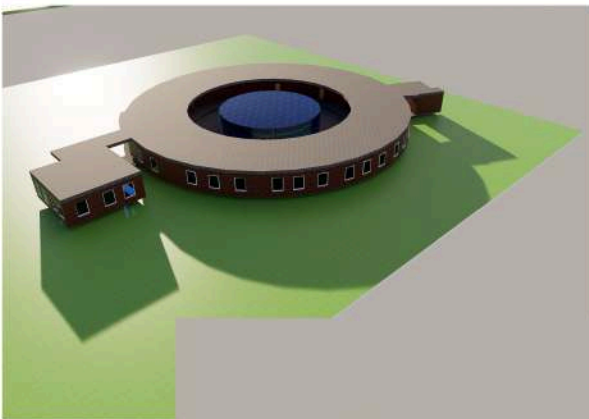
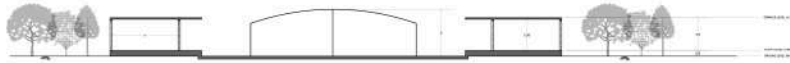
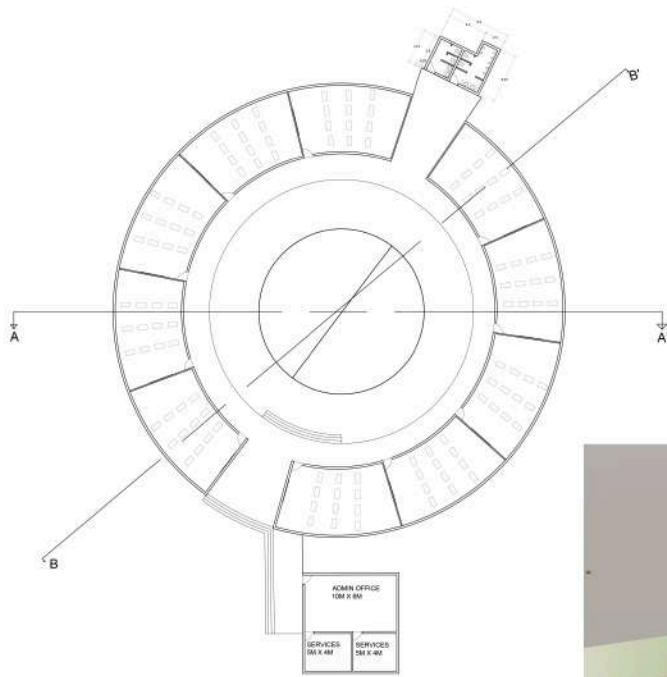
SECTION AA' (1:200)



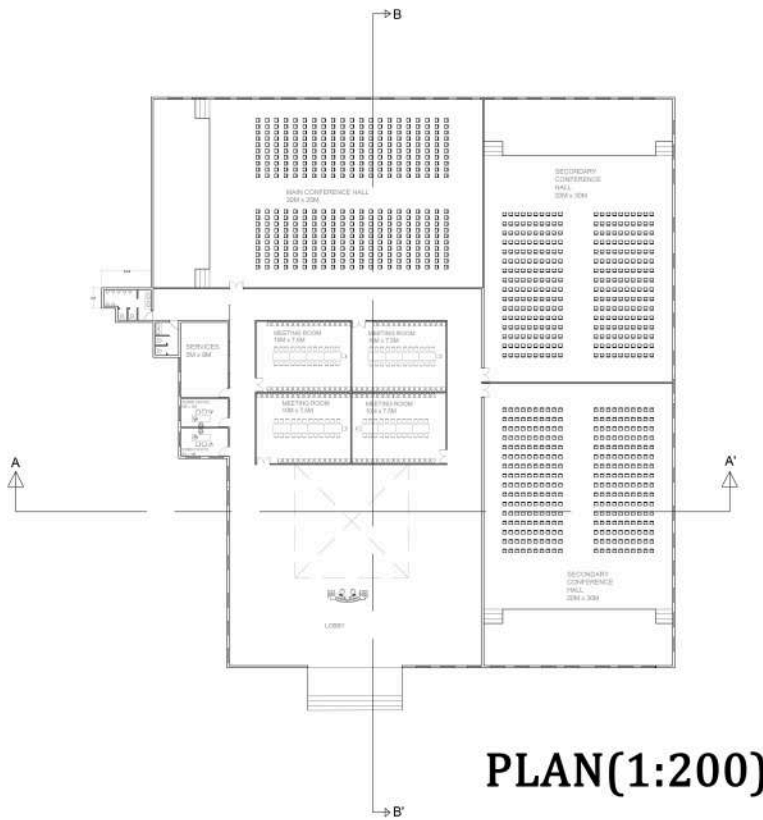
SECTION BB' (1:200)



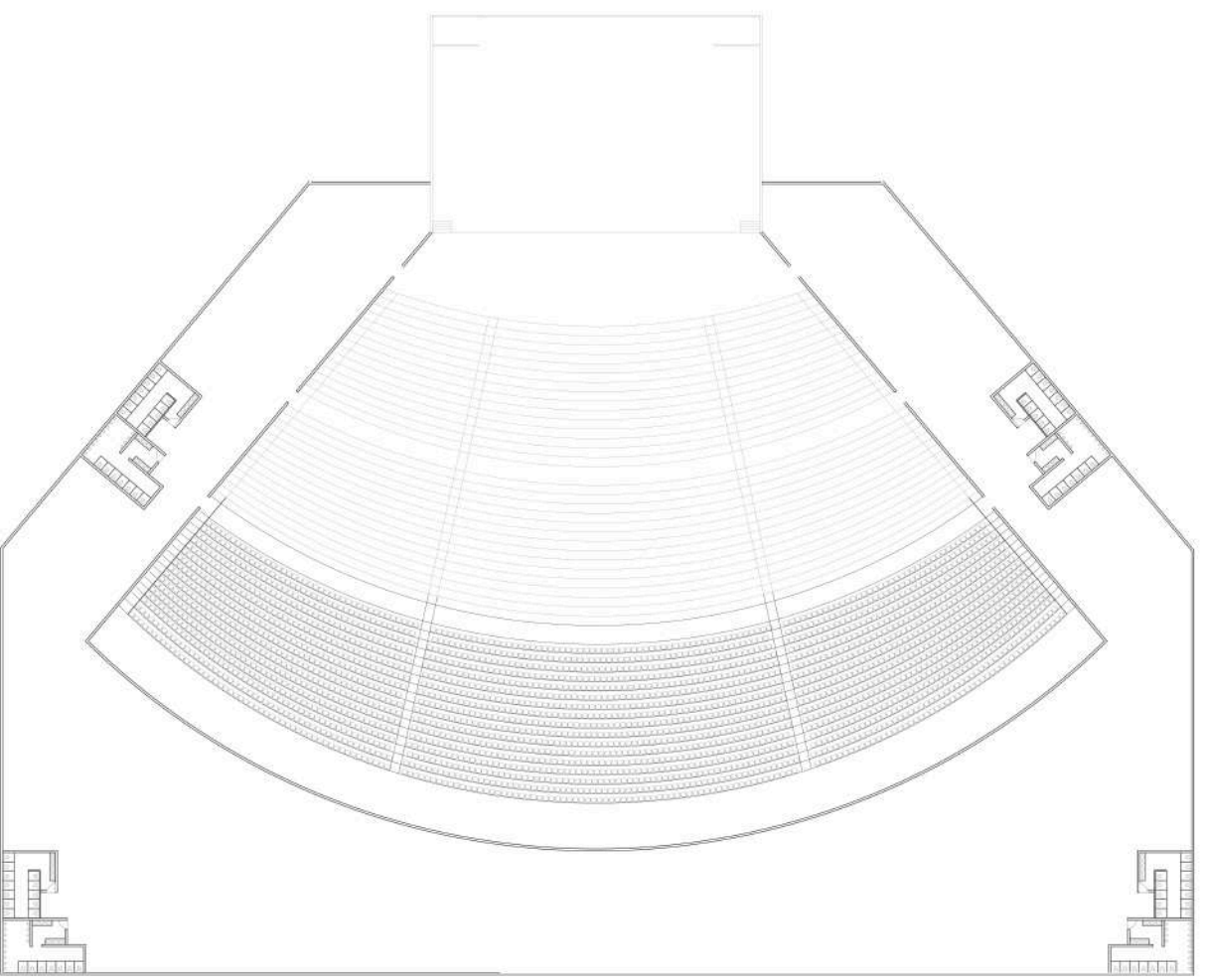
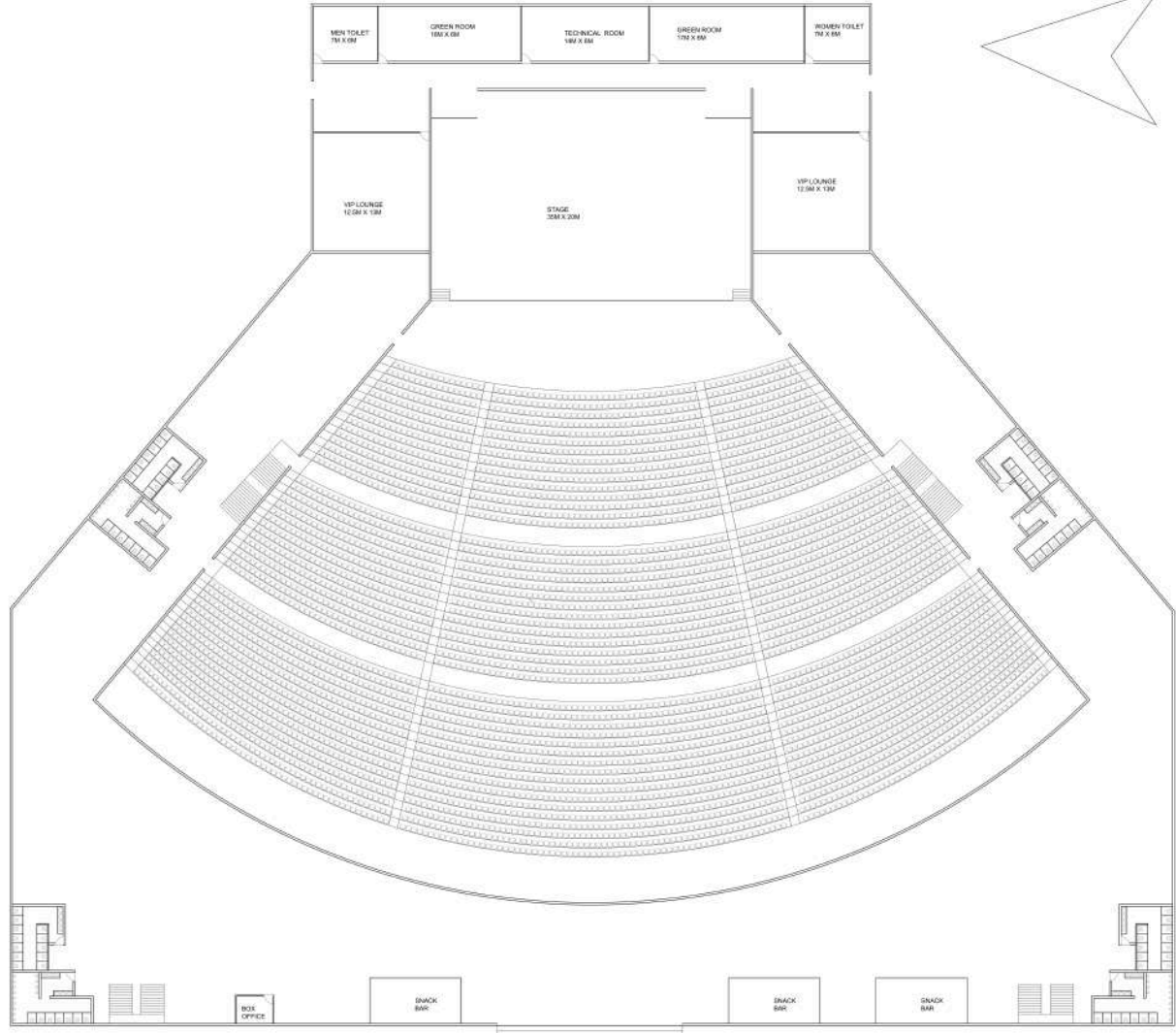
**ARSENAL PARK
-AUDIO VISUAL ROOM
(SCALE - 1:200)**



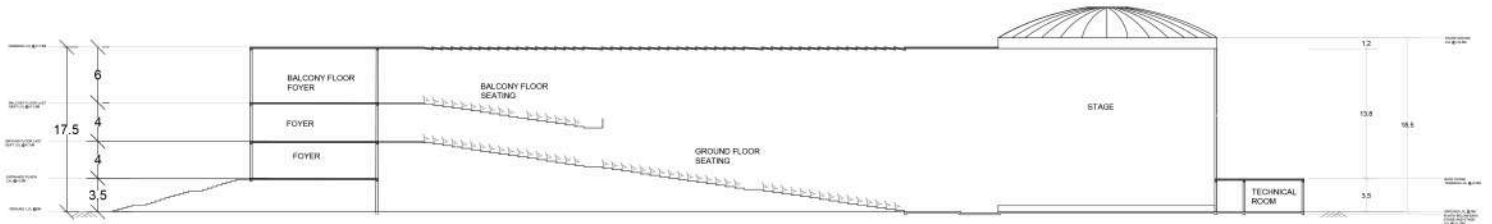
ARSENAL PARK
-CLASSROOM COMPLEX
(SCALE - 1:200)



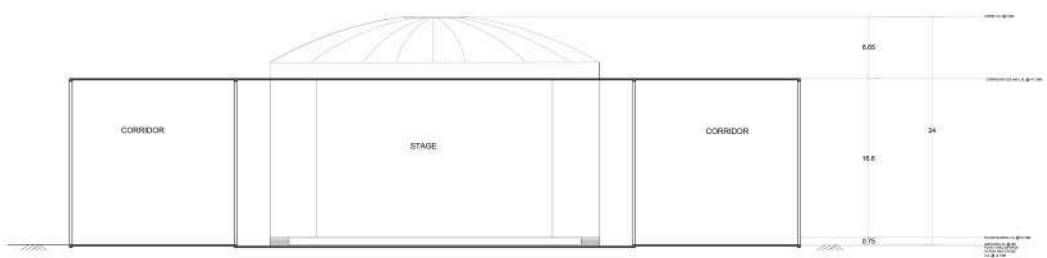
**ARSENAL PARK
-CONFERENCE COMPLEX**
(SCALE - 1:200)



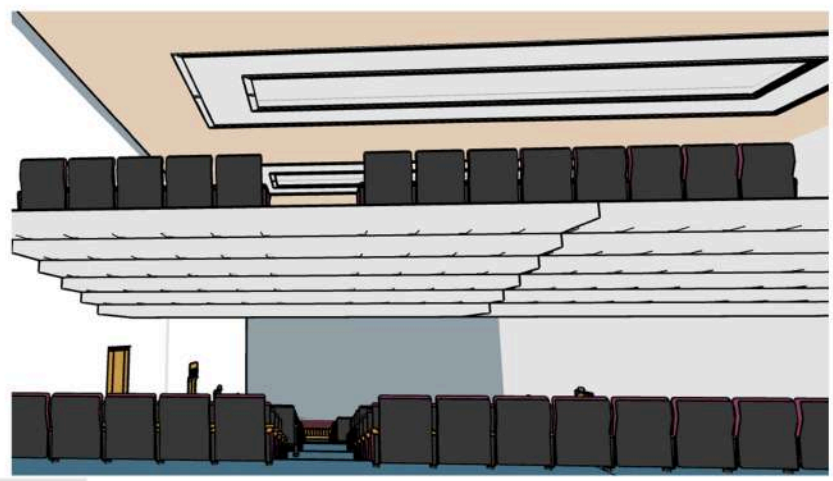
**ARSENAL PARK
-CONCERT HALL**
PLAN (SCALE - 1:200)



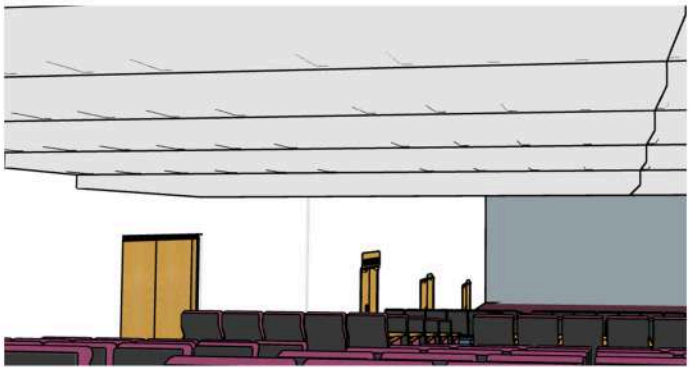
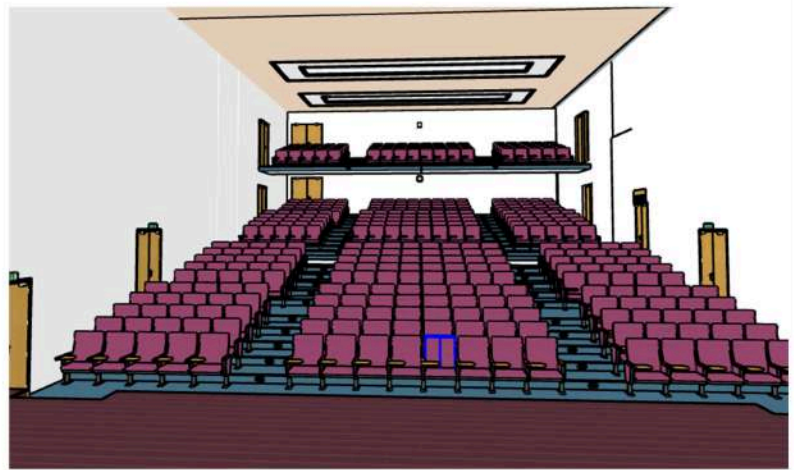
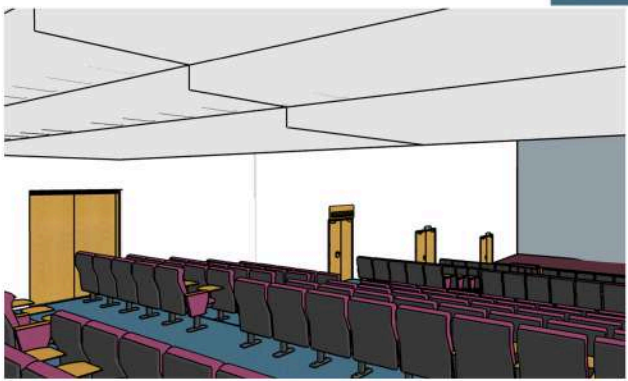
SECTION



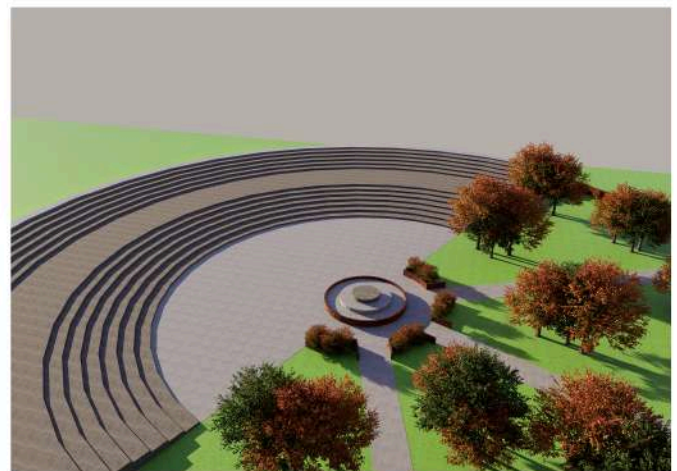
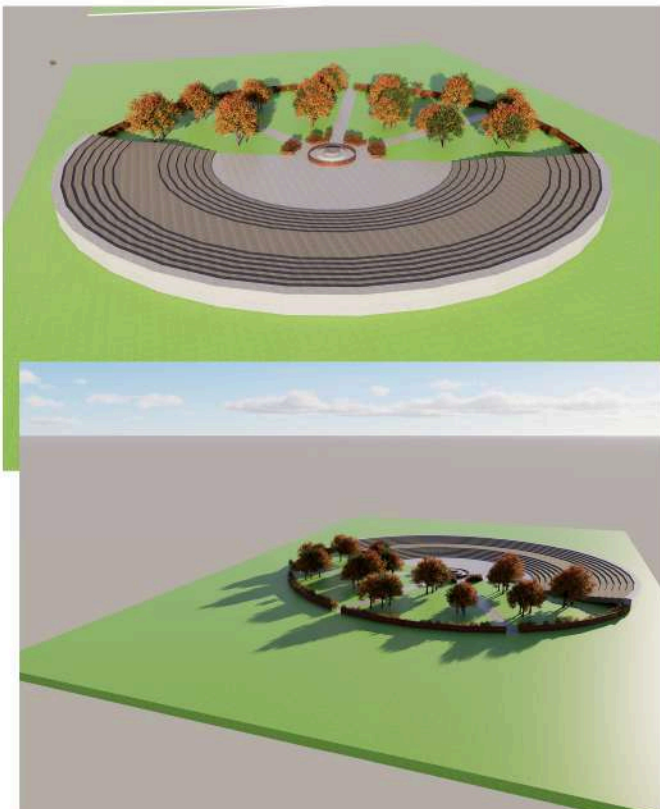
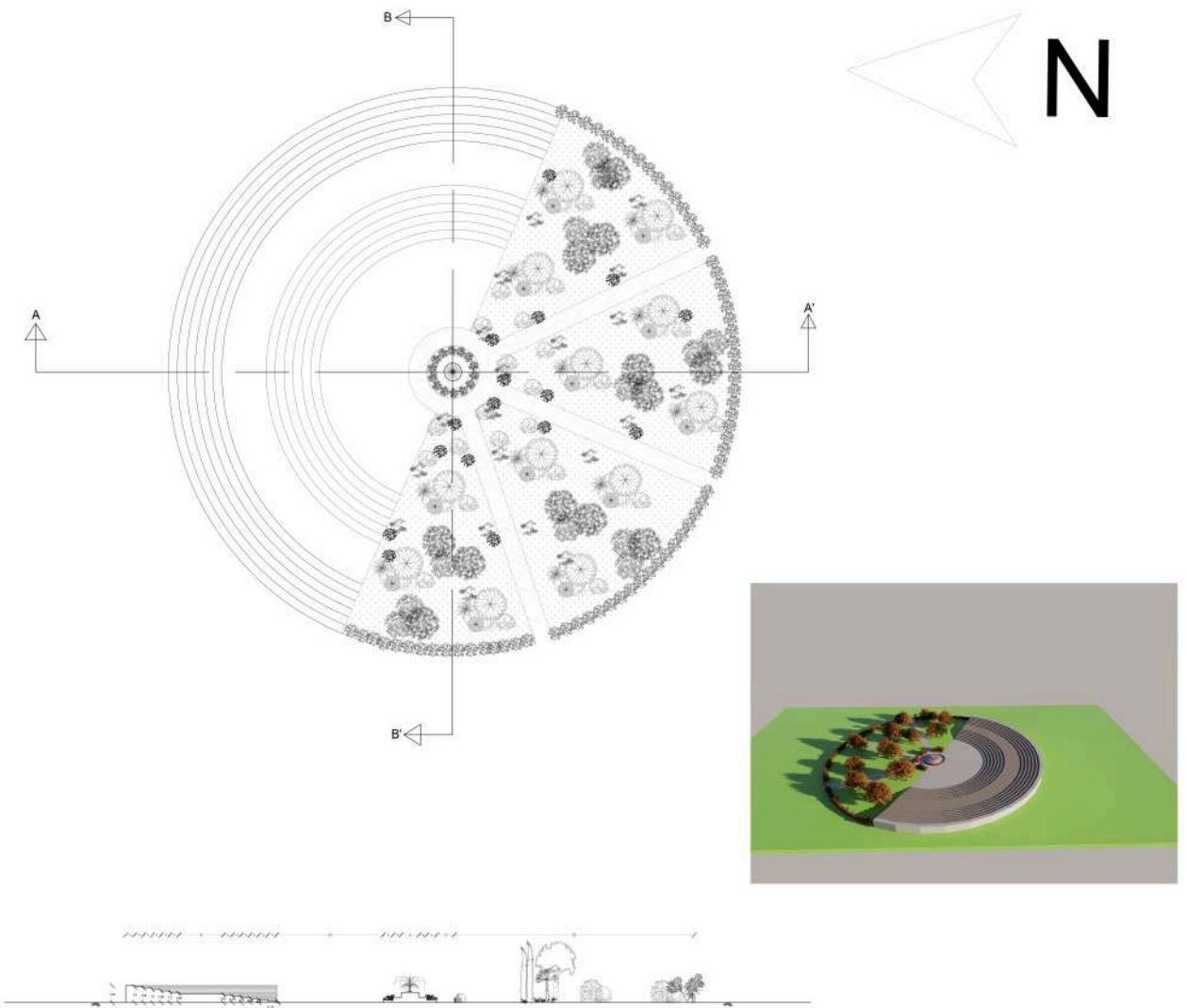
SECTION



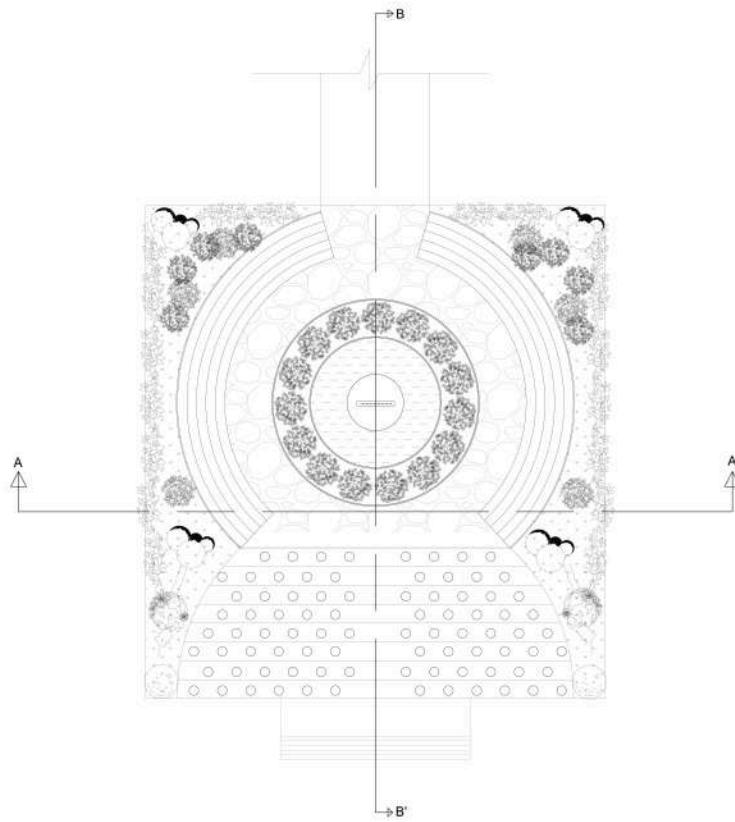
VIEWS



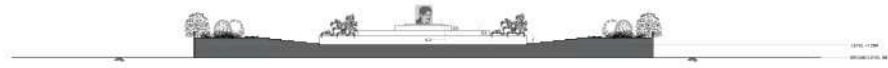
**ARSENAL PARK
-CONCERT HALL**
SECTIONS (SCALE - 1:200)
VIEWS



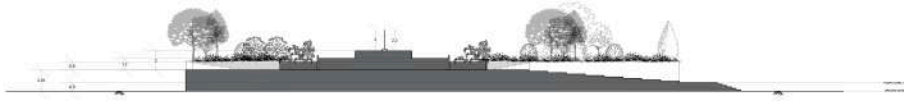
**ARSENAL PARK
-AMPHITHEATRE**
(SCALE - 1:200)



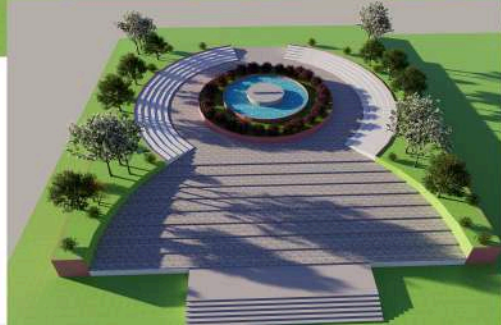
PLAN (1:200)



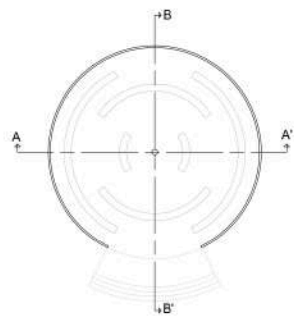
SECTION AA' (1:200)



SECTION BB' (1:200)



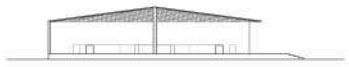
ARSENAL PARK
-MEMORIAL PLAZA
(SCALE - 1:200)



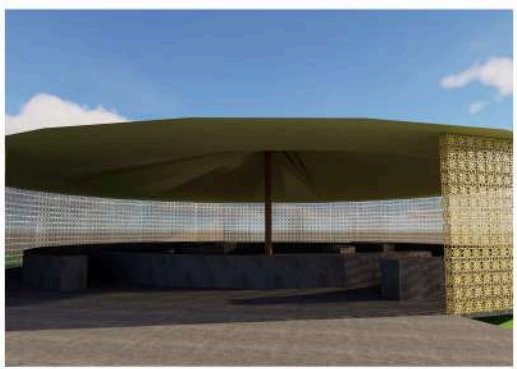
PLAN (1:200)



SECTION AA' (1:200)



SECTION BB' (1:200)



VIEWS



ARSENAL PARK
-SHADE HOUSE
(SCALE - 1:200)