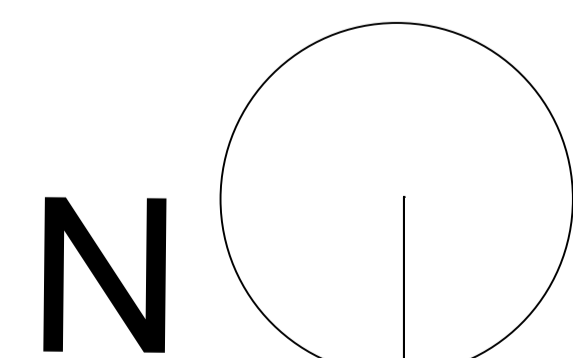


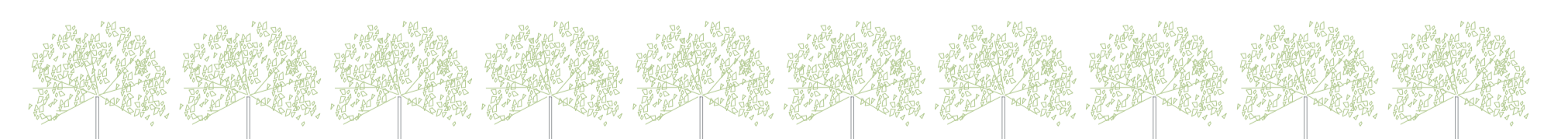
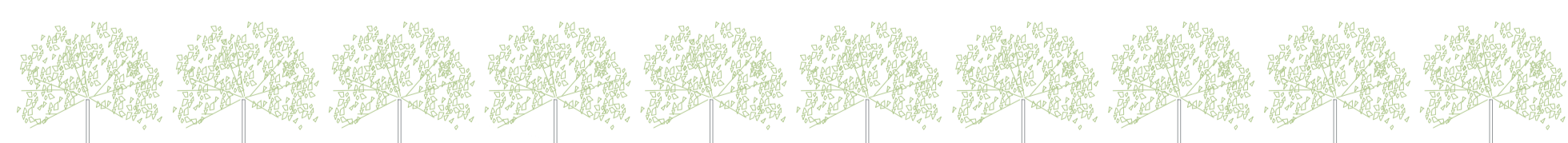
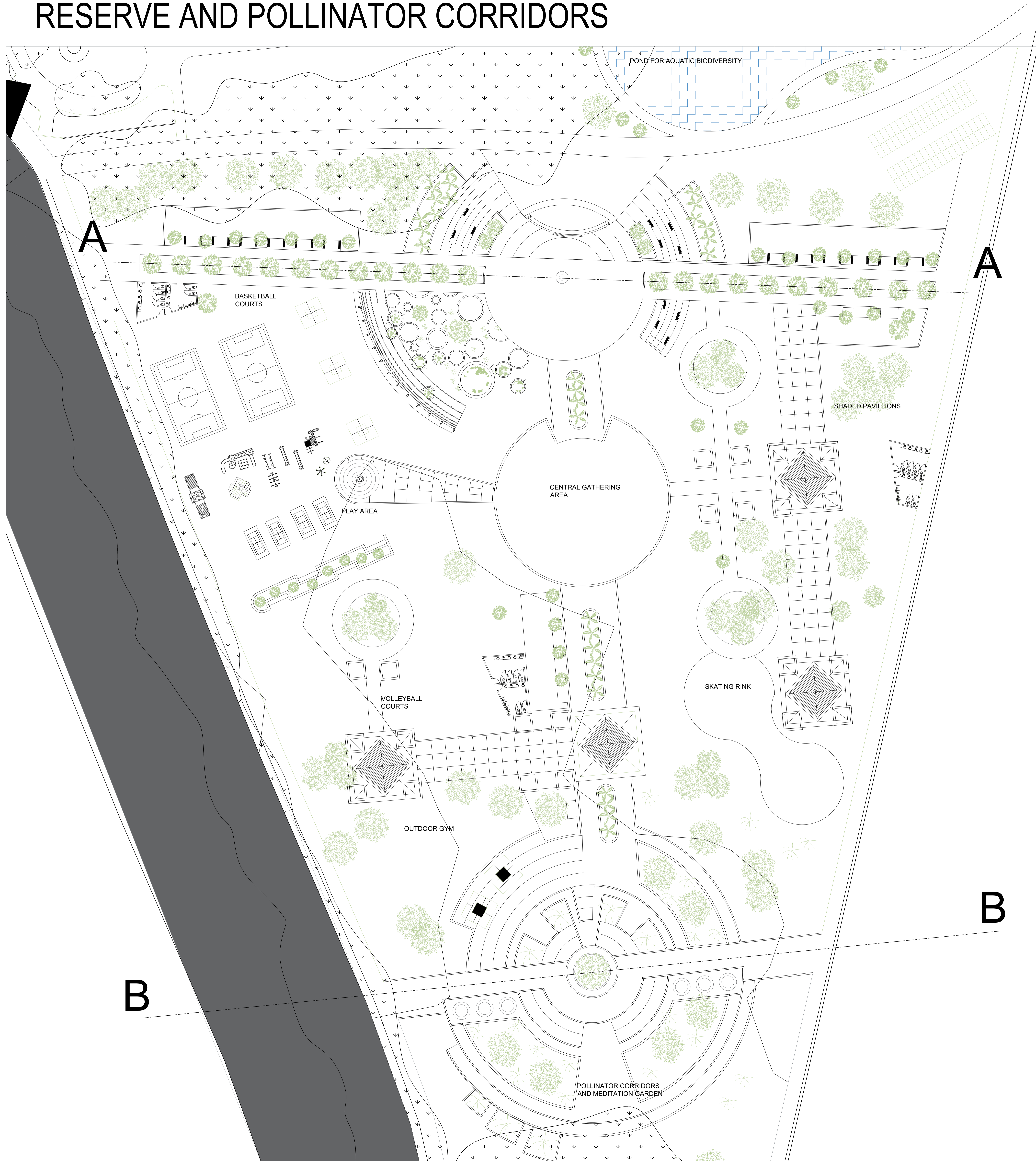
# SITE PLAN

119.7 HECTARE  
 295.8 ACRE  
 1196768.7 SQ.M

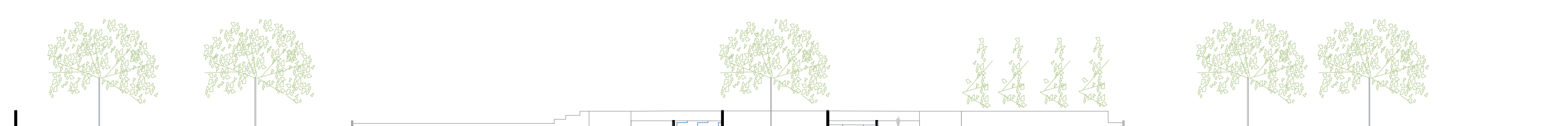


ALL DIMENSIONS ARE IN METER  
**SCALE : 1:2000**

# ARSENAL MEMORIAL PLAZA WITH LOCAL VEGETATION RESERVE AND POLLINATOR CORRIDORS



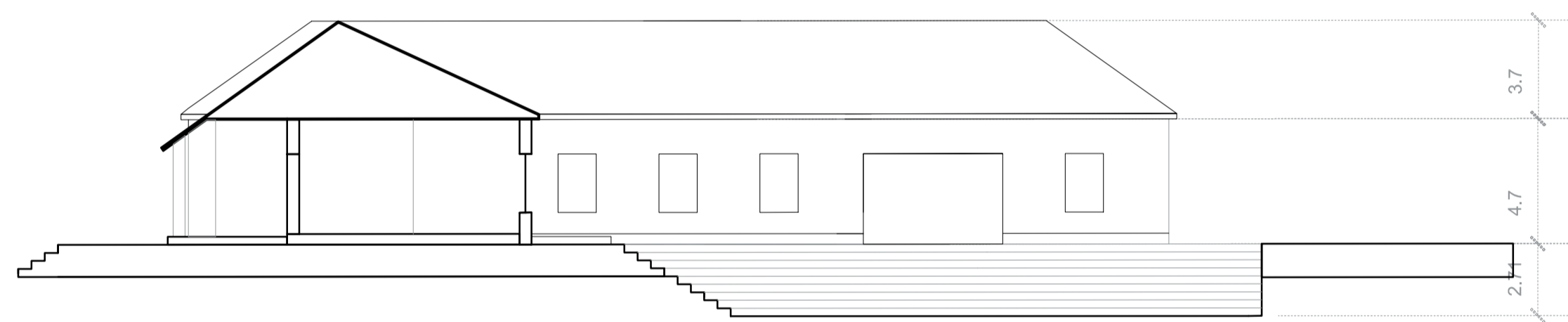
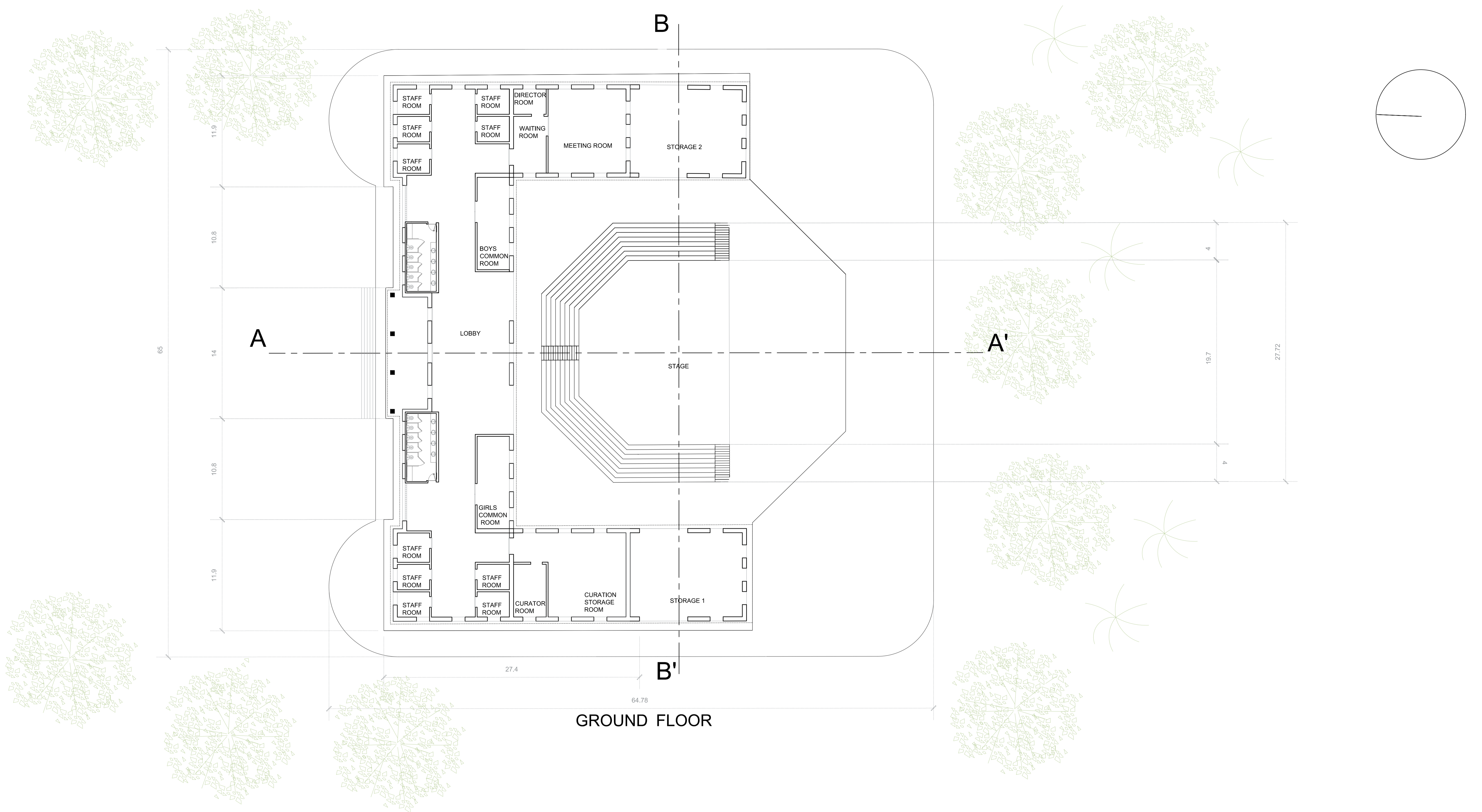
SECTION A-A'



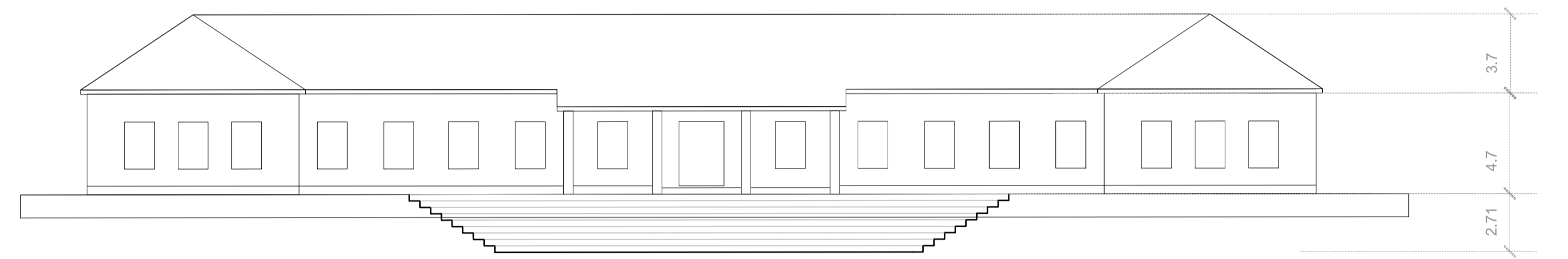
SECTION B-B'



# THE ADMINISTRATION BLOCK



SECTION A-A



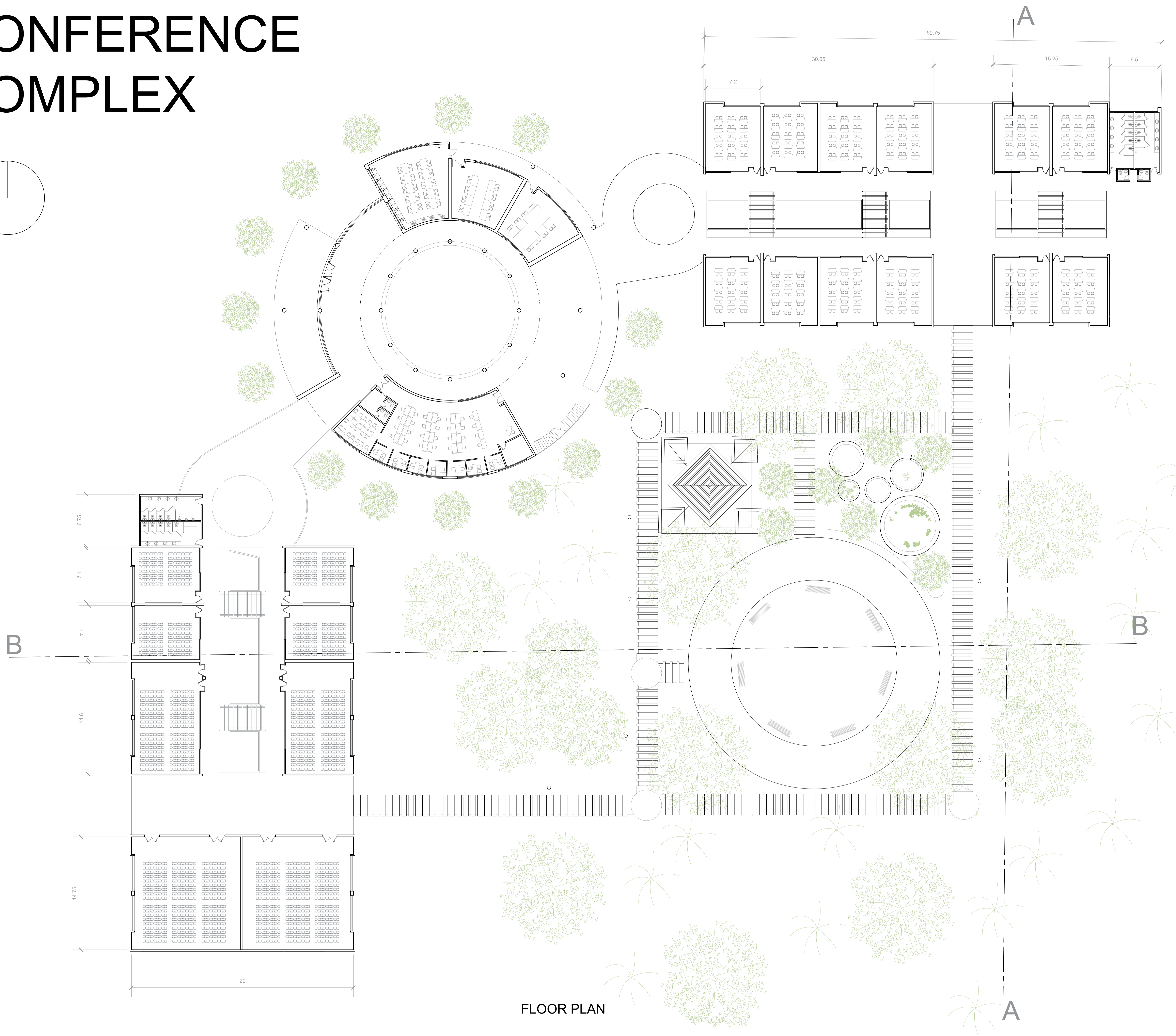
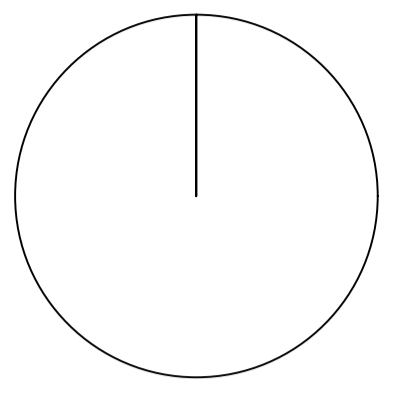
SECTION B-B'



THE ADMINISTRATION BLOCK IS DESIGNED TO MIMIC THE FORMS OF THE EXISTING ARCHITECTURE IN THE SITE. IT CREATES MORE CONNECT TO THE CONTEXT AND HISTORY.

THE BUILDING DEFLECTS THE WIND AND AMBIENT SOUND, CREATING A PEACEFUL ATMOSPHERE FOR ACTIVITIES LIKE PRESENTATIONS, PERFORMANCES, BREAK SESSIONS AND EVEN INDIVIDUAL QUIET STUDY.

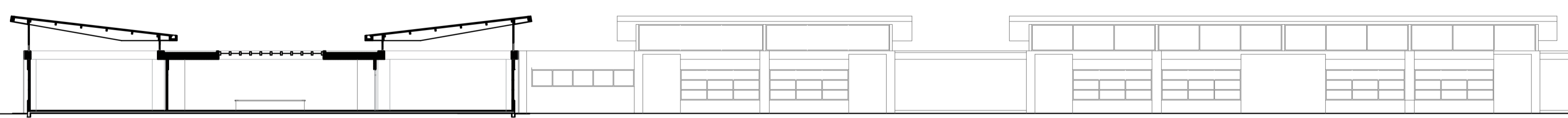
# CONFERENCE COMPLEX



FLOOR PLAN



SECTION A-A'

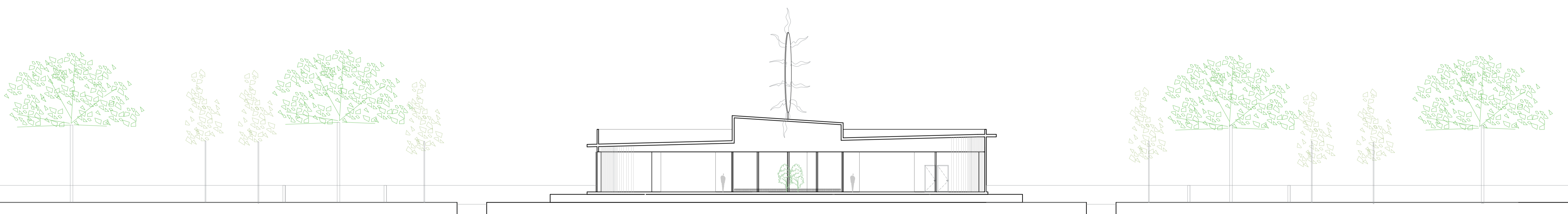
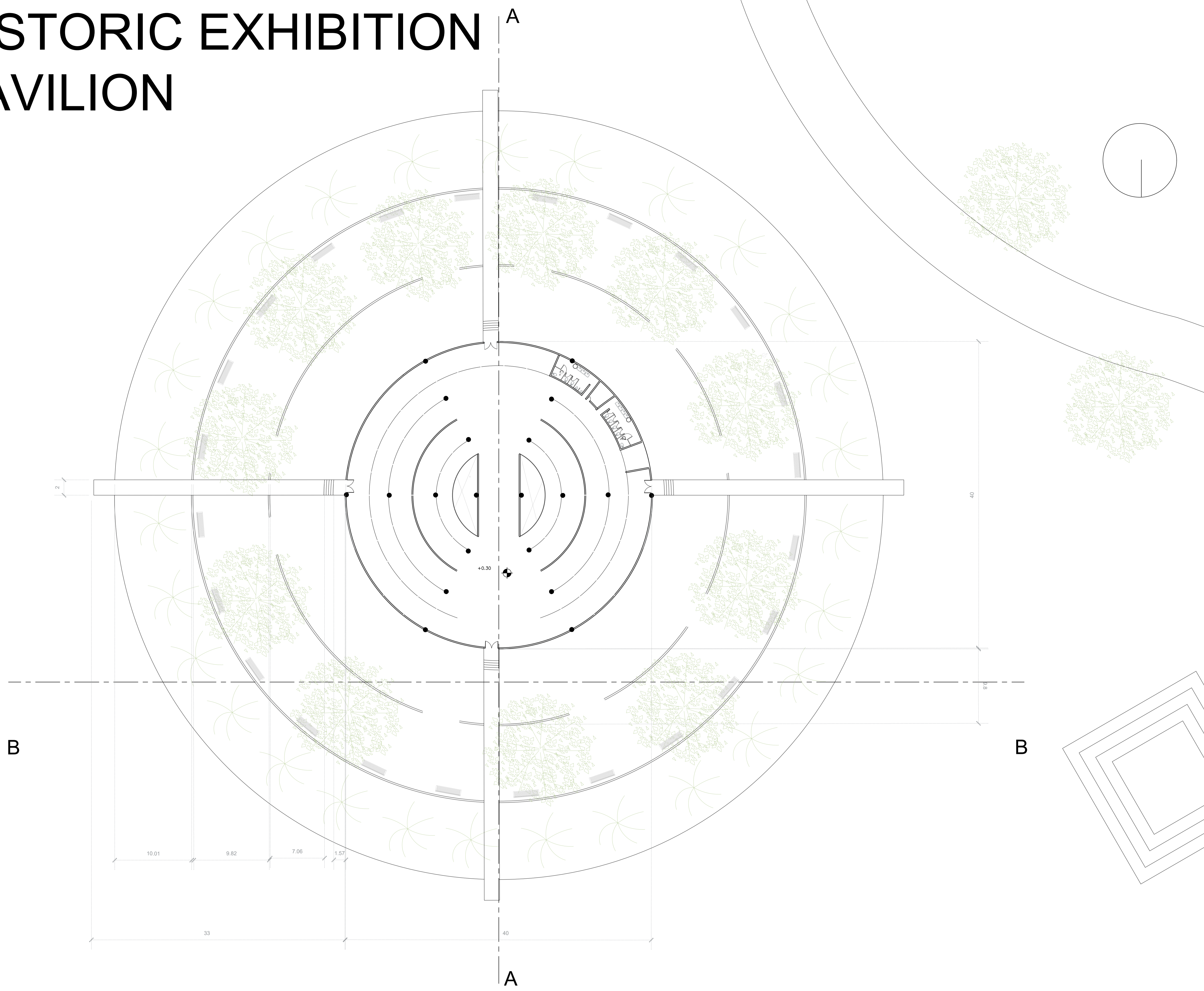


SECTION B-B'

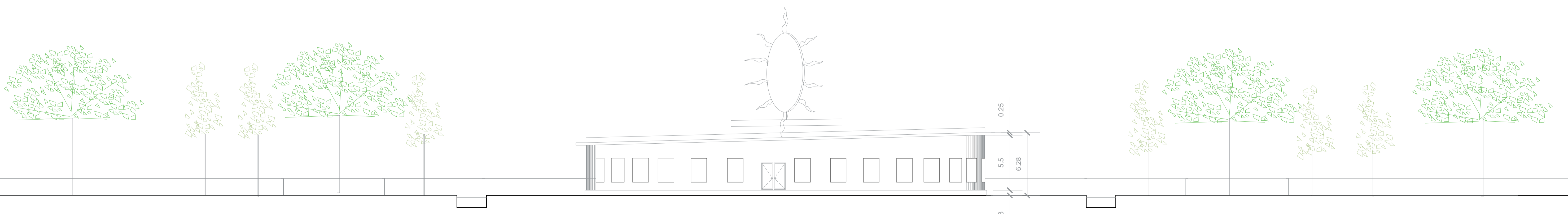


THE CONFERENCE COMPLEX IS DESIGNED AFTER THE NATIONAL BIRD, RUFOUS HORNERO, EACH WING RAISES TOWARDS THE OUTSIDE, CREATING A WELCOMING FEELING, THE CENTRAL PATHWAYS ARE COVERED WITH A SKYLIGHT FOR MAXIMUM ATTENTION INDUCIND NATURAL LIGHT PENETRATION

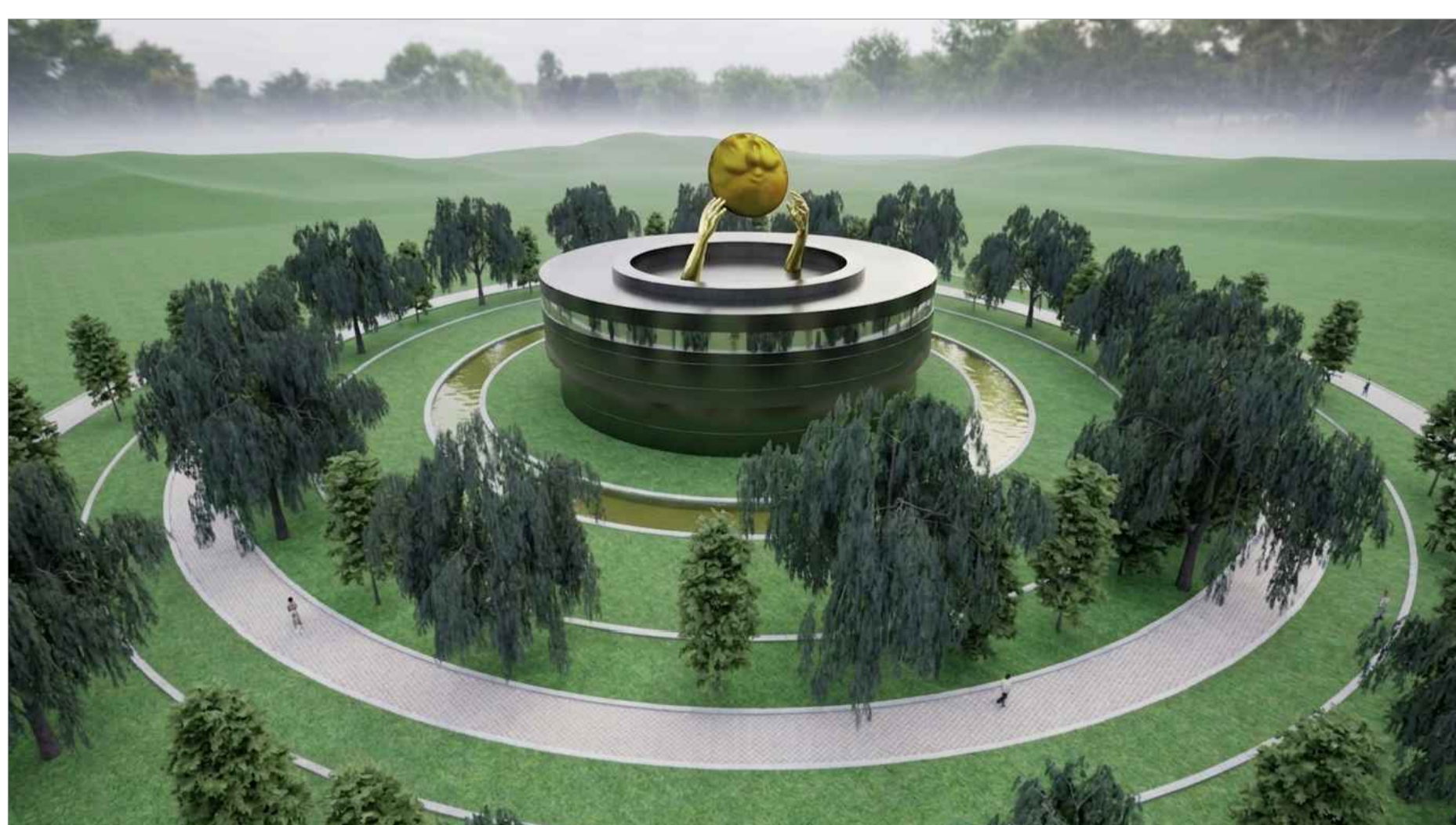
# HISTORIC EXHIBITION PAVILION



Section A-A

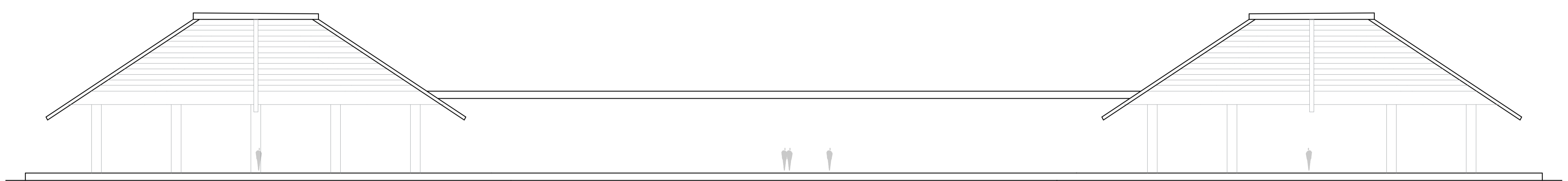


Section B-B

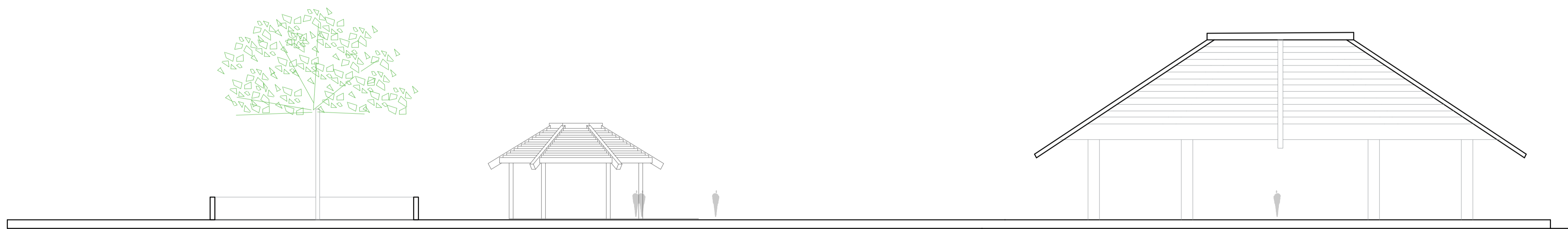


THE HISTORIC EXHIBITION PAVILION IS DESIGNED AS A TRIBUTE TO THE AFFECTED PEOPLE. WITH CONCENTRIC CIRCLES AND THE SUN OF MAY, A SYMBOL WITH A FACE THAT REPRESENTS THE MAY REVOLUTION LEADING TO ARGENTINA'S INDEPENDENCE IN 1810.

# SHADE HOUSES



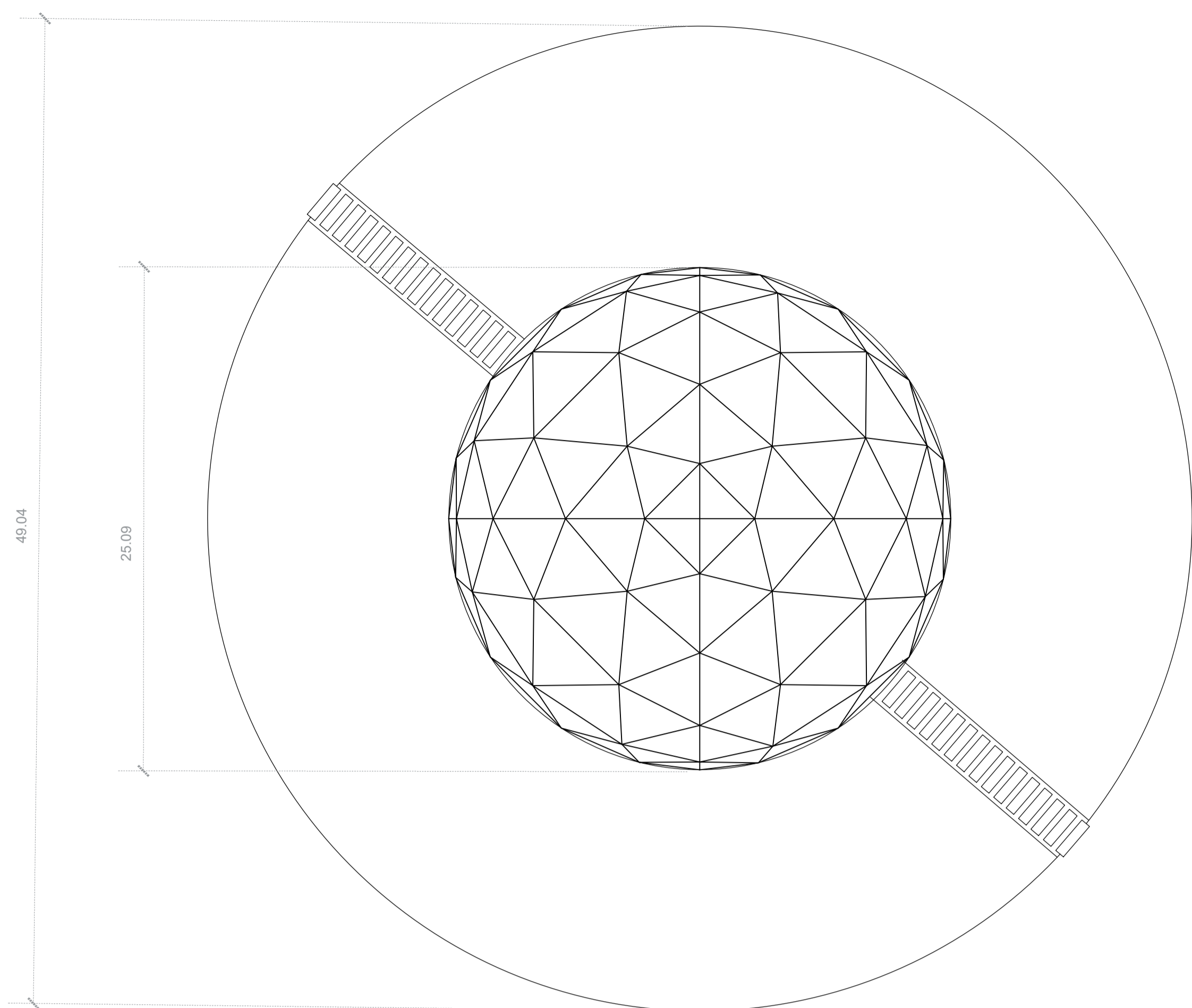
SECTION A-A'



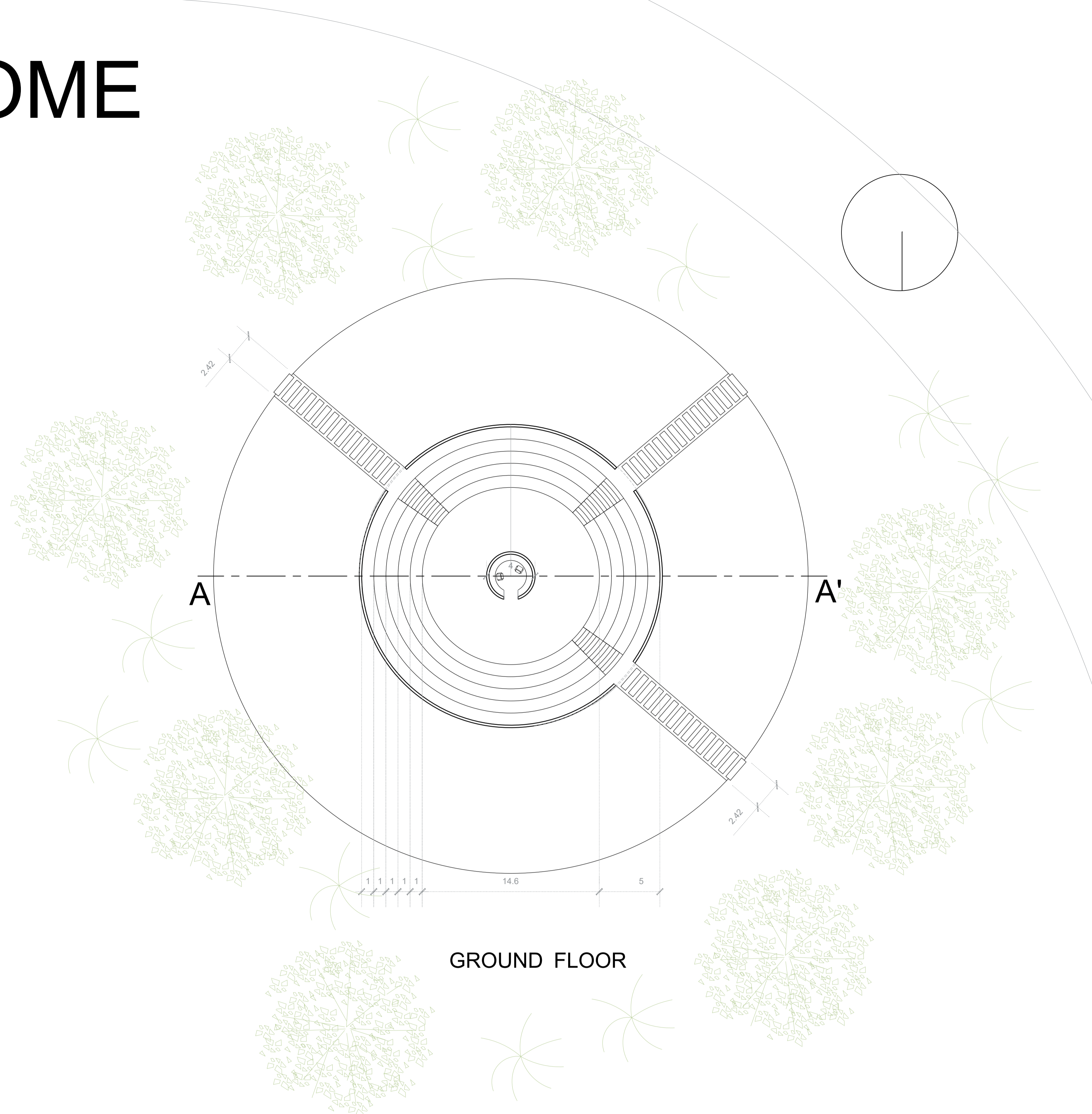
SECTION B-B'

THE BARREN REGIONS OF THE SITE ARE TURNED INTO A BUSTLING BIOSPHERE RESERVE AS WELL AS A COMMUNITY HUB FOR THE RESIDENTS OF THE CITY. THIS PARK IS DOTTED WITH SHADE HOUSES IN FURTHER ENCOURAGE COMMUNITY GATHERINGS.

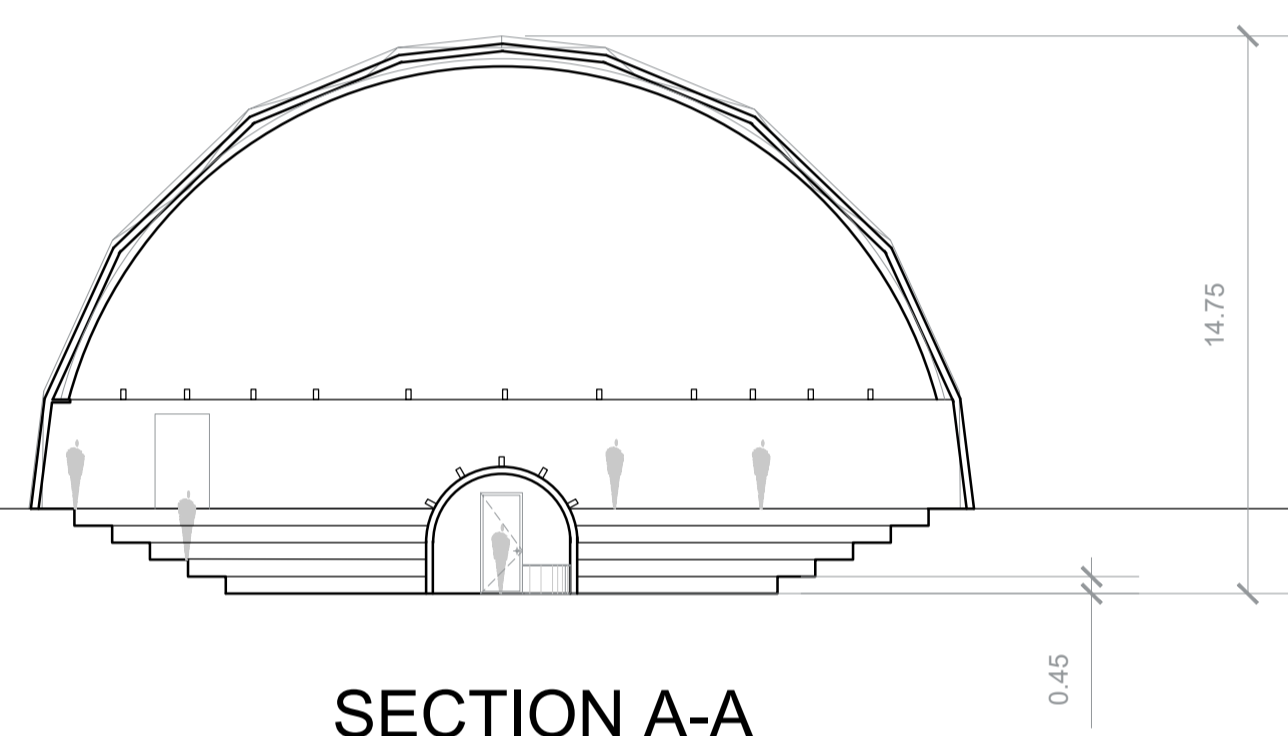
# THE AUDIO VISUAL DOME



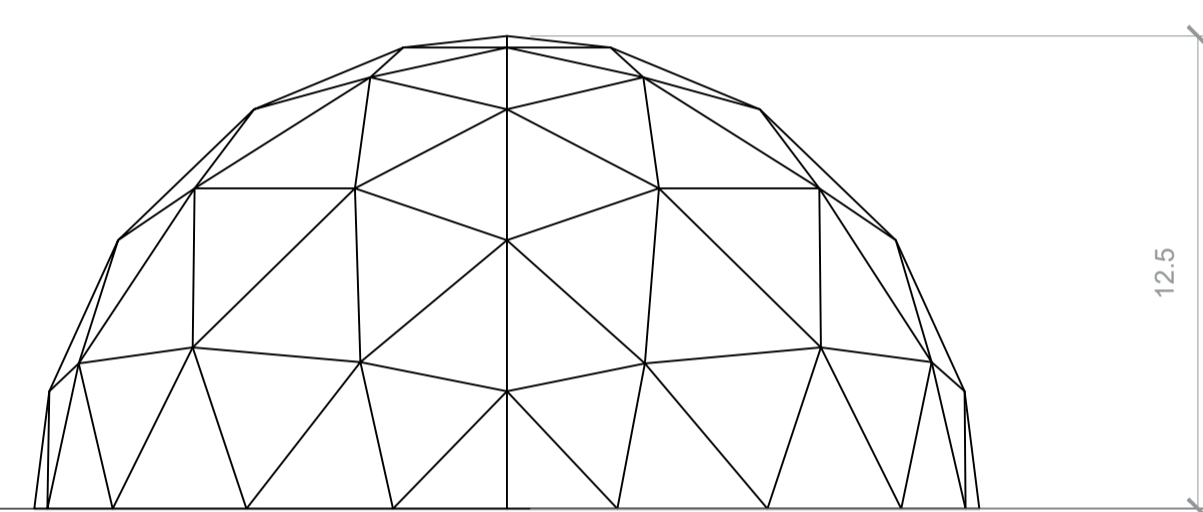
ROOF PLAN



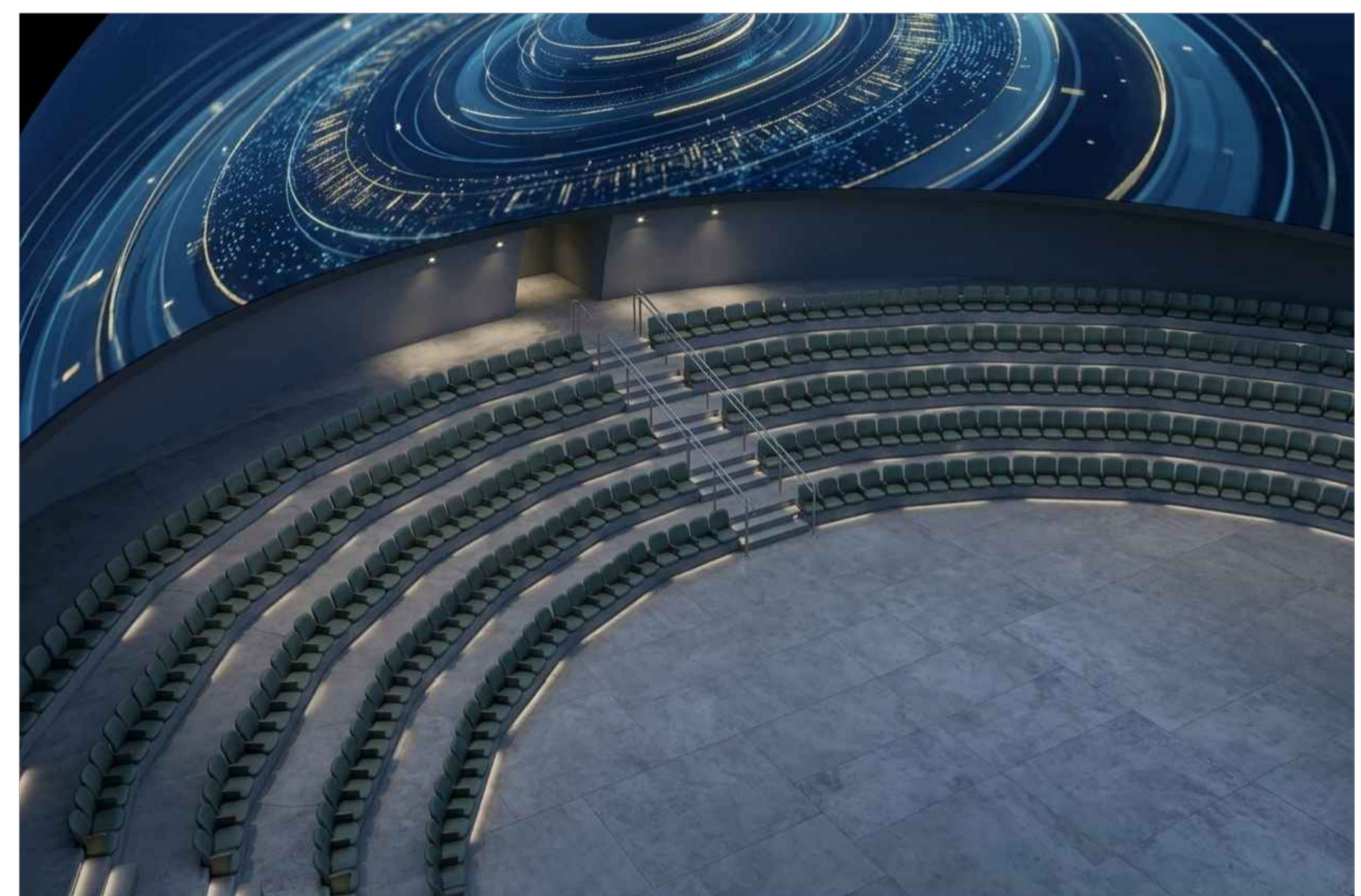
GROUND FLOOR



SECTION A-A



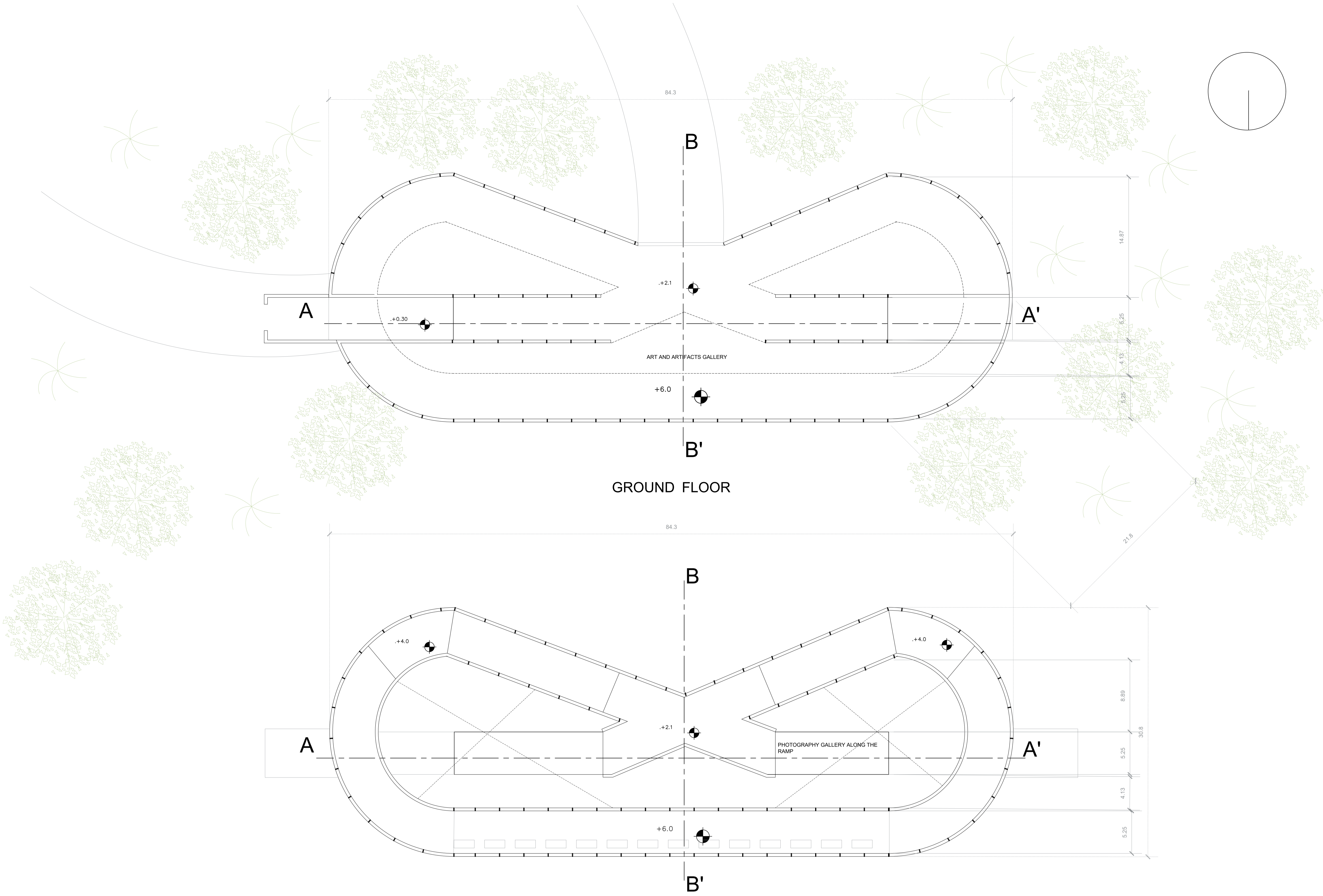
ELEVATION



THE DOME IS BURIED INTO THE EARTH AND IS SURROUNDED BY A MOAT TO INDUCE A FEELING OF ENTRY INTO A CONTAINED AREA OF EXPRESSION.

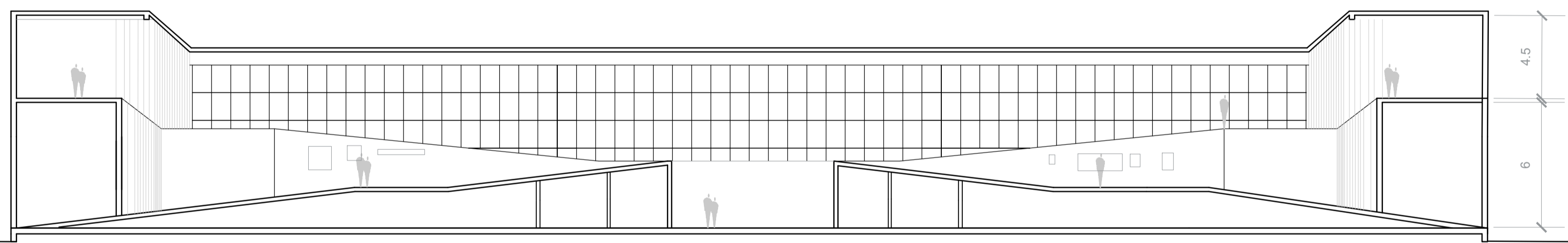
THE OUTER DOME IS GEODESIC AND THE INTERIOR IS PANELED TO CREATE A SMOOTH INTERIOR TO FACILITATE 360 DEGREE PROJECTION.

# MEMORIAL ART GALLERY

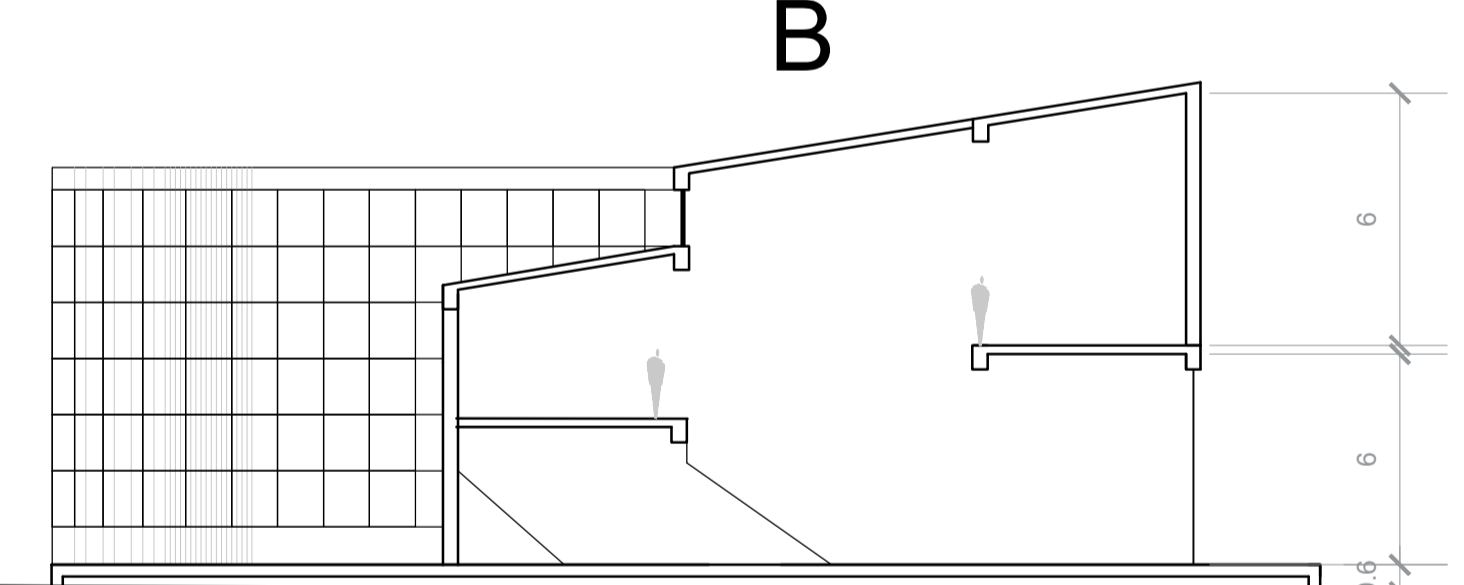


GROUND FLOOR

FIRST FLOOR PLAN



SECTION A-A



SECTION B-B

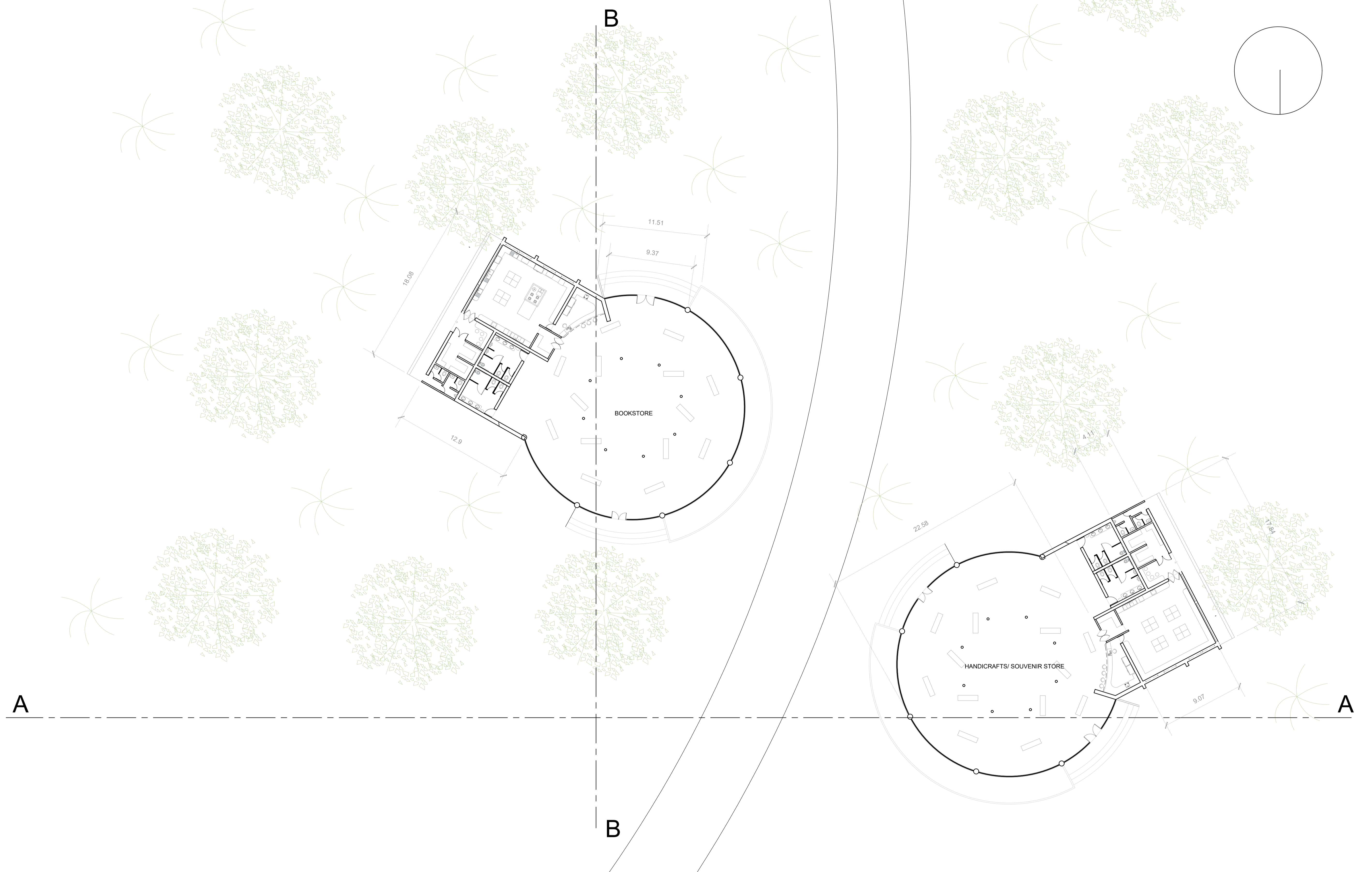


THE GALLERY IS SHAPED AS A KNOT TO CREATE A FEELING OF LOOPING AROUND THE HISTORY OF THE SITE.

IT REPRESENTS THE HISTORY OF THE PAST THAT CANT BE UNTIED.

THE MATERIALS ARE BASED ON THE CLIMATIC CONTEXT AND UTILITY.

# COMMERCIAL COMPLEX



Section A-A

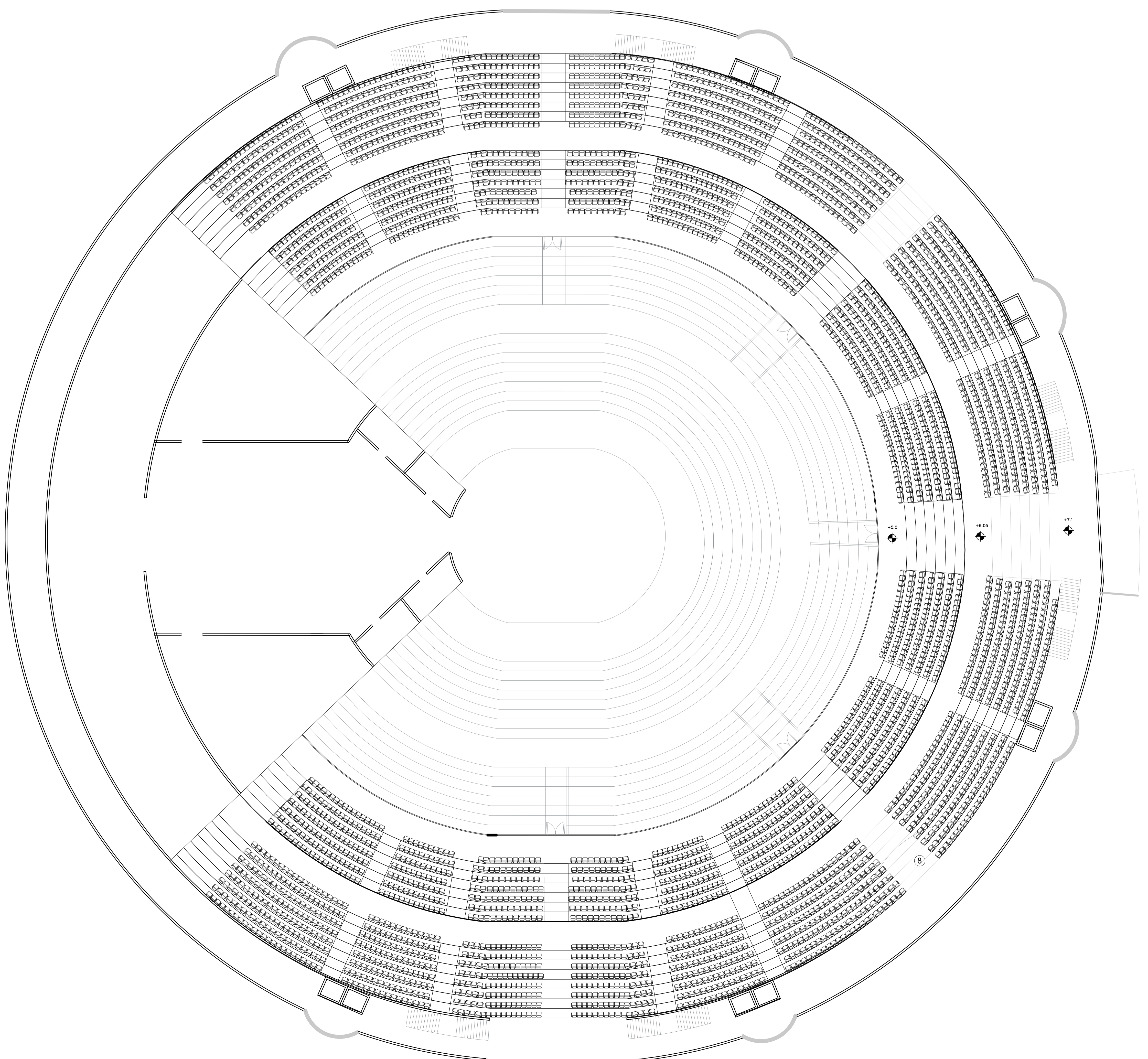
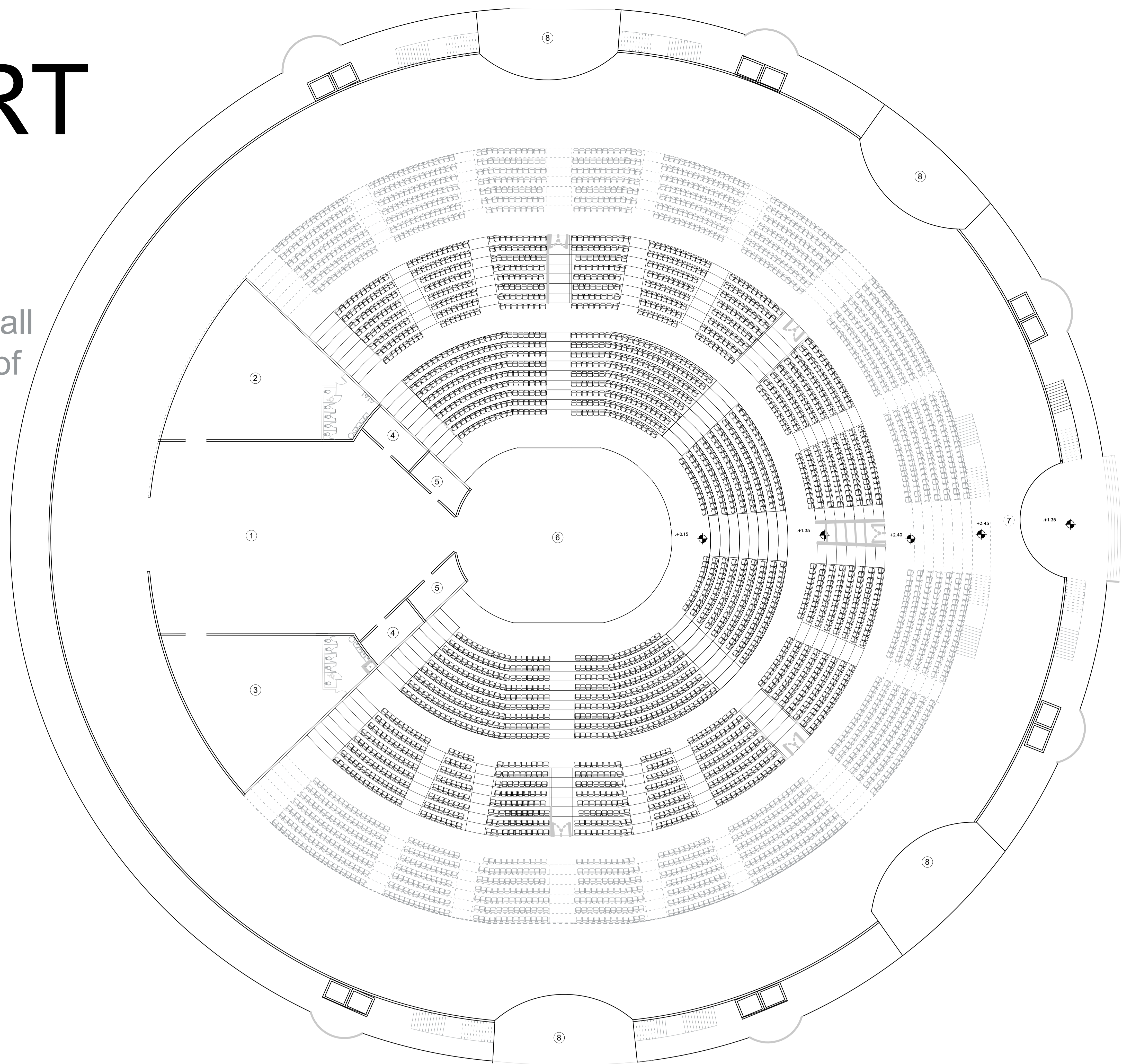


Section B-B



# CONCERT HALL

The shape of the concert hall is inspired from the shape of the nest of argentina's national bird, the hornes. The outer envelope is double layered, providing similar thermal regulation properties with the use of organic materials.



- ① BACK STAGE
- ② BOYS COMMON ROOM
- ③ GIRLS COMMON ROOM
- ④ GREEN ROOMS
- ⑤ TECHNICAL ROOMS
- ⑥ STAGE
- ⑦ LOBBY
- ⑧ RESTROOMS

