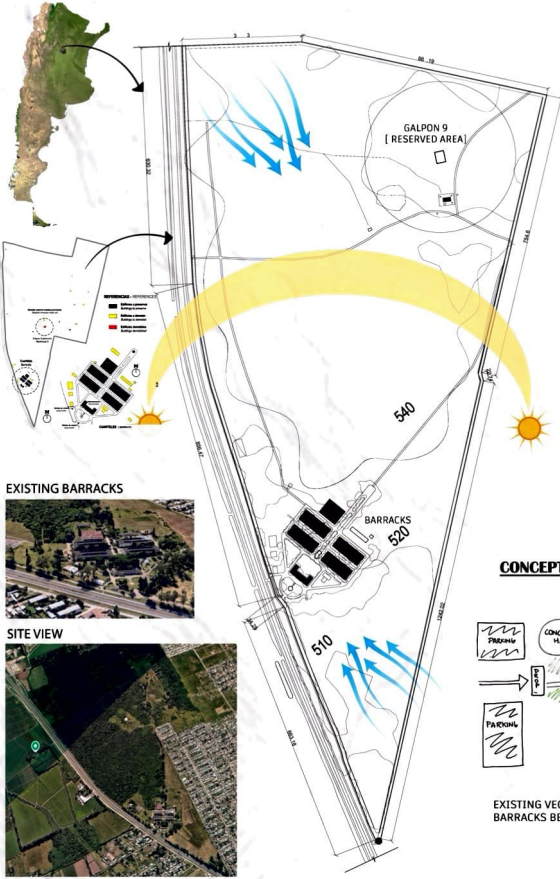


SITE ANALYSIS

LOCATION AND CONTEXT

SITE LOCATED IN THE METROPOLITAN REGION OF SAN MIGUEL DE TUCUMÁN. HISTORICAL MILITARY-INDUSTRIAL LANDSCAPE TRANSFORMED INTO A MEMORY PARK SURROUNDED BY DEVELOPING URBAN FABRIC AND OPEN GREEN AREAS. SITE ACTS AS A SYMBOLIC THRESHOLD BETWEEN MEMORY, ECOLOGY, AND PUBLIC LIFE



ECOLOGY & VEGETATION

LARGE PORTION OF THE SITE CONSISTS OF WILD GRASSES, SHRUB VEGETATION, MEADOW-TYPE OPEN LANDSCAPE, SEASONAL OVERGROWTH DUE TO ABANDONMENT



TOPOGRAPHY & GEOGRAPHY

GRADUALLY CONTOURED SITE WITH NATURAL DEPRESSIONS CAN ASSIST IN RAINWATER RETENTION AND LANDSCAPE ZONING

WIND ANALYSIS

- WINDS PRESENT THROUGHOUT YEAR
- MODERATE SPEEDS
- MULTIPLE DIRECTIONS
- CROSS VENTILATION IS HIGHLY EFFECTIVE
- OPENINGS ALIGN WITH PREVAILING WIND

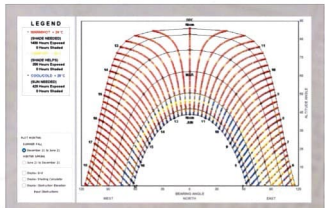


TEMPERATURE ANALYSIS

- SUMMER (DEC-FEB): 30-38°C (VERY HOT)
- WINTER (JUN-JUL): 5-20°C (MILD-COOL)
- INFERENCE - COOLING IS DOMINANT
- HEATING IS MINIMAL

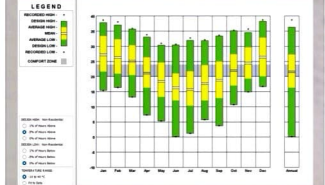
HYDROLOGY & DRAINAGE

- HIGH SEASONAL RAINFALL
- SITE FUNCTIONS AS A POTENTIAL RETENTION BASIN FOR RUNOFF CONTROL
- PERMEABLE LANDSCAPE AND BIOSWALES



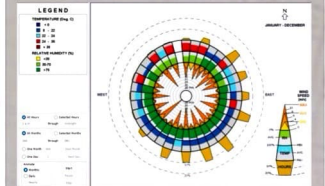
SOLAR ANALYSIS

- STRONG SOLAR RADIATION THROUGHOUT THE YEAR
- EAST & WEST SUN IS HARSH
- HIGH SUN ANGLE IN SUMMER
- INFERENCE - SHADING IS CRITICAL
- AVOID DIRECT SOLAR GAIN



CLIMATE TYPE

- HOT-HUMID / SUBTROPICAL CLIMATE
- HIGH TEMPERATURE AND HIGH HUMIDITY MOST OF THE YEAR



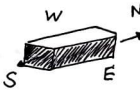
HUMIDITY ANALYSIS

- RELATIVE HUMIDITY: 60% - 90% MOST OF THE YEAR
- HIGH HUMIDITY EVEN IN SUMMER
- INFERENCE - CAUSES DISCOMFORT
- REDUCES PASSIVE COOLING

DESIGN STRATEGIES

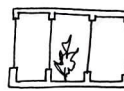
1. ORIENTATION

LONG AXIS > NORTH - SOUTH
MINIMIZE EAST - WEST EXPOSURE



2. VENTILATION

LARGE WINDOWS
SEVERAL COURTYARDS
OPEN CORRIDORS

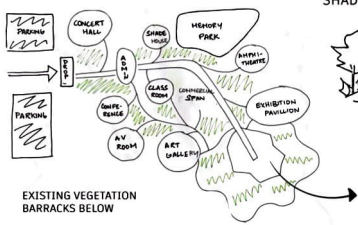


3. BUILDING FORMS

LONG NARROW PLAN
PROMOTES AIRFLOW
AVOID COMPACT BLOCKS



CONCEPTUAL ZONING



4. LANDSCAPE STRATEGY

TREES ON THE WEST SIDE
SHADED OUTDOOR SPACES



5. MATERIALS

USE REFLECTIVE MATERIALS
LIGHT WEIGHT CONSTRUCTION



SITE ZONING IS DONE BASED ON THE SITE HISTORY AND FUNCTIONALITY OF THE USER.

INTEGRATION OF GREEN SPACES ARE CRUCIAL FOR THIS DESIGN AS IT IMPACTS THE EMOTION OF THE VISITOR

THE 95TH CENTIMETRE

PROJECT DESCRIPTION

THE PROPOSAL FOR THE ARSENAL INTERPRETATION CENTRE IS CONCEIVED AS AN ARCHITECTURAL JOURNEY OF MEMORY, EMOTION, AND TRANSFORMATION.

INSPIRED BY THE HISTORICAL REALITY OF THE CLANDESTINE DETENTION CENTRE WHERE PRISONERS WERE CONFINED WITHIN PARTITIONS ONLY 95 CENTIMETRES WIDE, THE PROJECT TRANSLATES THIS DIMENSION INTO SPATIAL EXPERIENCE.

THE PROJECT IS NOT TREATED AS A CONVENTIONAL MUSEUM. INSTEAD, IT BECOMES A SEQUENCE OF EMOTIONAL SPACES WHERE ARCHITECTURE ITSELF COMMUNICATES FEAR, CONFINEMENT, TENSION, SILENCE, RESISTANCE, AND FINALLY HOPE.

THE INTERPRETATION CENTRE IS INTEGRATED INTO THE LANDSCAPE OF THE ARSENAL MEMORY PARK, ALLOWING ARCHITECTURE AND NATURE TO WORK TOGETHER AS INSTRUMENTS OF REMEMBRANCE AND COLLECTIVE HEALING. THE PROPOSAL PRESERVES THE EMOTIONAL SIGNIFICANCE OF THE SITE WHILE CREATING VIBRANT CULTURAL SPACES THAT ENCOURAGE DIALOGUE, EDUCATION, GATHERING, AND REFLECTION.



PROGRAM AND FUNCTION

ARRIVAL ZONE
CREATES PSYCHOLOGICAL TRANSITION FROM CITY TO MEMORIAL LANDSCAPE.

INTERPRETATION CENTRE
THE EMOTIONAL AND EDUCATIONAL HEART OF THE DESIGN.

MEMORY PLAZA
A COLLECTIVE PUBLIC SPACE FOR REMEMBRANCE.

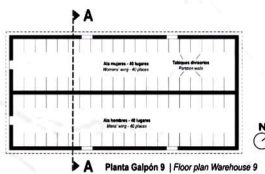
EDUCATIONAL SPACES
"ACTIVE MEMORY" THROUGH EDUCATION AND REFLECTION OF THOUGHTS

CONCERT HALL
TRANSFORMS THE SITE FROM A PLACE OF SILENCE INTO A PLACE OF COLLECTIVE CULTURAL ACTIVITY.

PROJECT IDEA

"SPACE CAN TORTURE. SPACE CAN HEAL"

THE IDEA ORIGINATES FROM A SINGLE SHOCKING HISTORICAL FACT: PRISONERS WERE CONFINED WITHIN PARTITIONS ONLY 95 CM WIDE.



THE DESIGN EXPLORES HOW ARCHITECTURE AFFECTS HUMAN PSYCHOLOGY THROUGH:

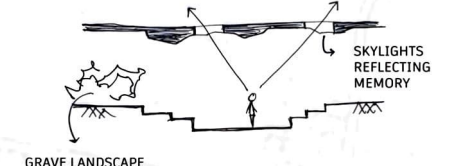
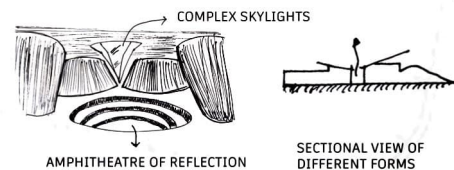
WIDTH, LIGHT, ENCLOSURE, SCALE, MOVEMENT, AND SPATIAL COMPRESSION.

THE VISITOR EXPERIENCES ARCHITECTURE EMOTIONALLY THROUGH CHANGING SPATIAL CONDITIONS.

COMPRESSION - ISOLATION - CONFUSION - REFLECTION - RELEASE

THE ARCHITECTURE BEGINS WITH NARROW, RIGID, OPPRESSIVE SPACES AND GRADUALLY OPENS INTO WIDER CURVED LANDSCAPES AND PUBLIC GATHERING SPACES.

FORM DEVELOPMENT



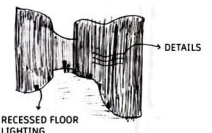
CONCEPT

1. COMPRESSION VS EXPANSION

THE JOURNEY BEGINS WITH COMPRESSED PATHWAYS INSPIRED BY THE 95 CM CELLS.

AS VISITORS PROGRESS THROUGH THE SITE:

SPACES WIDEN,
CEILINGS RISE,
VEGETATION INCREASES,
LIGHT BECOMES SOFTER,
MOVEMENT BECOMES FREER.



THE ARCHITECTURE SLOWLY RELEASES THE BODY FROM CONFINEMENT.

2. STRAIGHT LINES VS CURVES

THE DESIGN USES TWO OPPOSING GEOMETRIES:

STRAIGHT RIGID FORMS

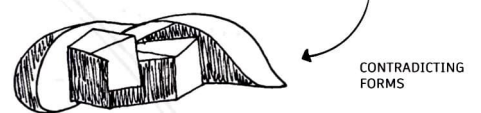
- MILITARY ORDER
- VIOLENCE
- CONTROL
- CONFINEMENT
- OPPRESSION

CURVED FLOWING FORMS

- HUMANITY,
- HEALING,
- MEMORY,
- EMOTION,
- FREEDOM.



THEIR INTERSECTION CREATES SPATIAL TENSION THROUGHOUT THE PROJECT.

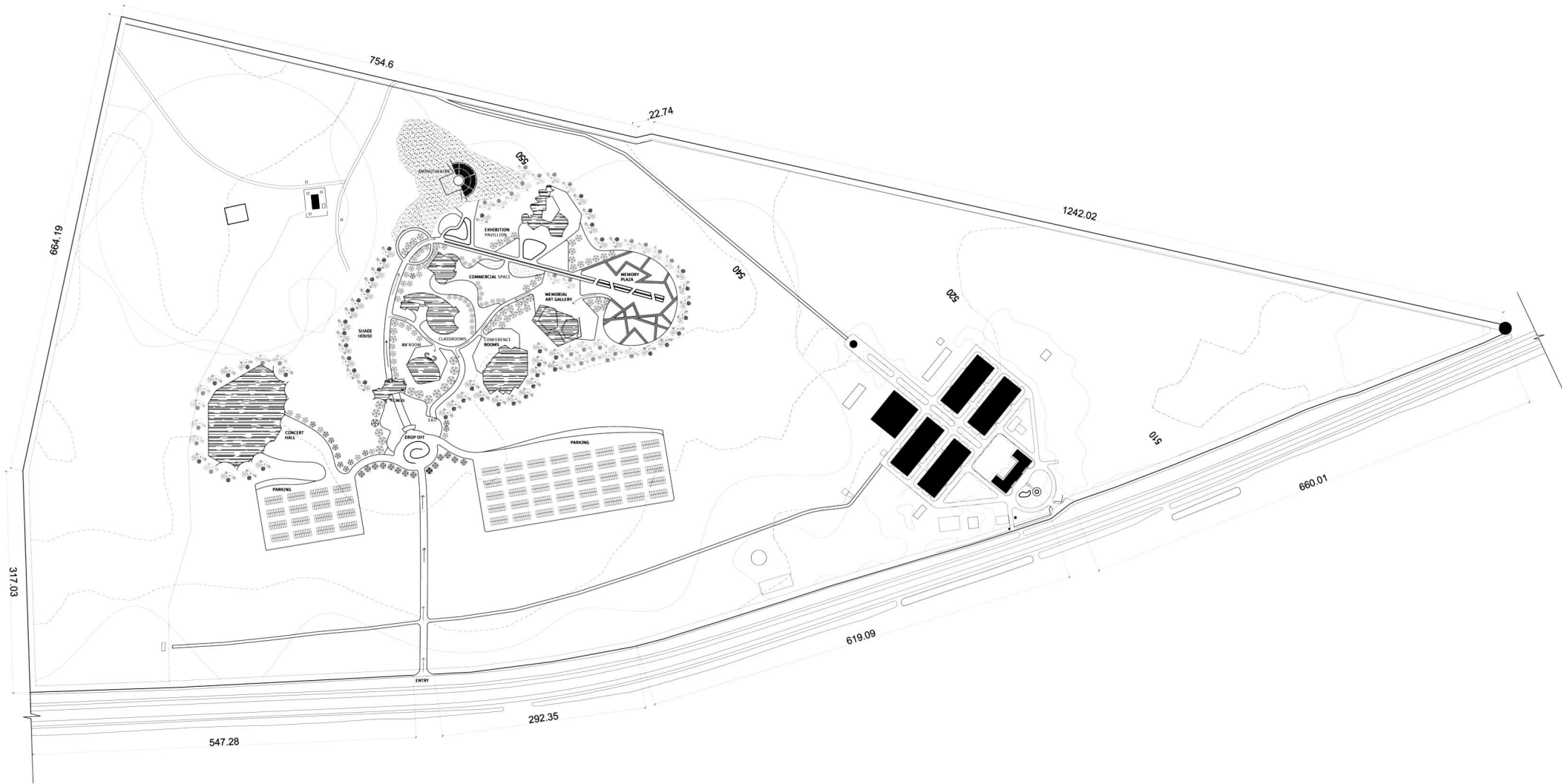


3. FRAGMENTED JOURNEY

THE INTERPRETATION CENTRE IS NOT DESIGNED AS ONE SOLID BUILDING. INSTEAD, FRAGMENTED BLOCKS ARE PLACED ACROSS THE LANDSCAPE TO CREATE PAUSES AND EMOTIONAL TRANSITIONS. THIS FRAGMENTATION REFLECTS:

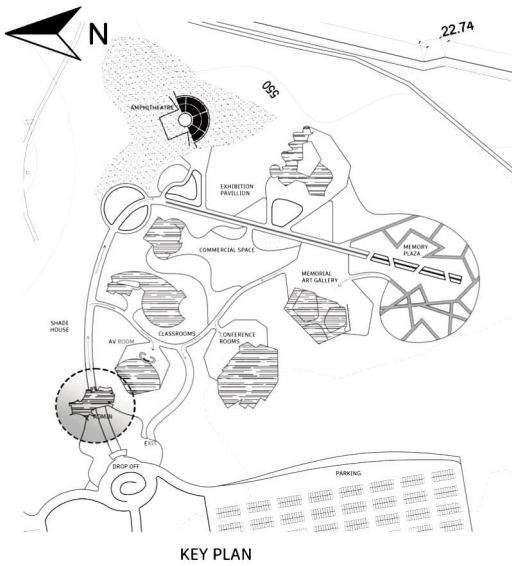
BROKEN MEMORIES, ERASED HISTORIES, INTERRUPTED LIVES, AND SCATTERED IDENTITIES.





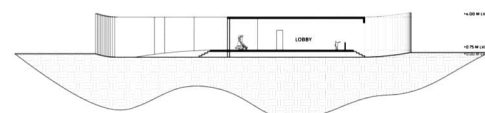
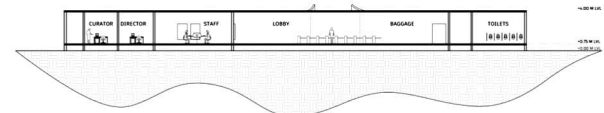
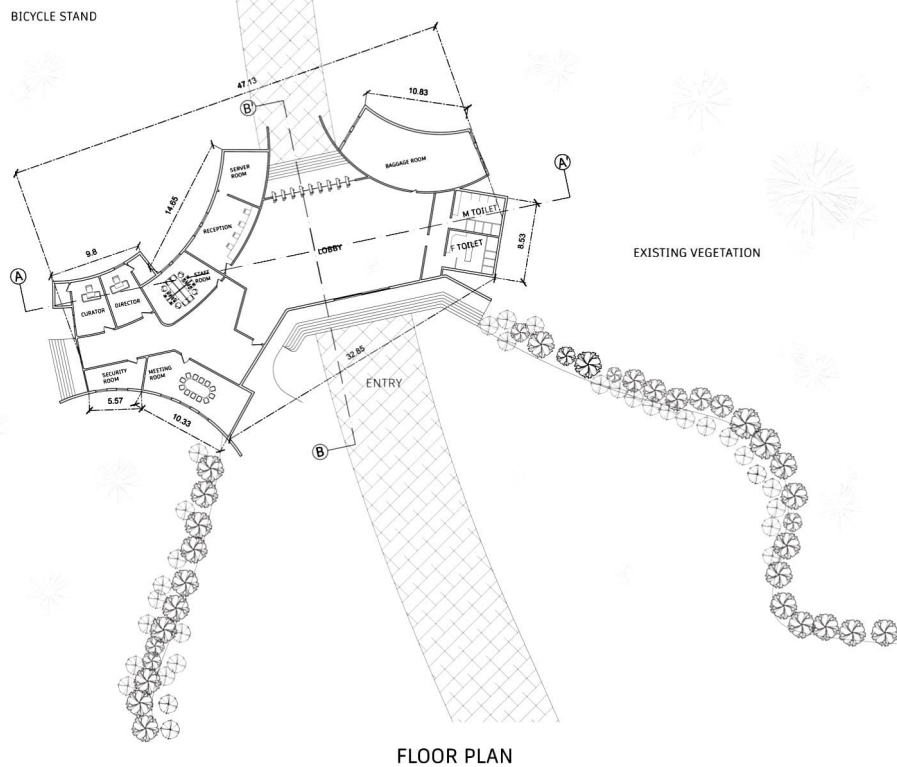
AREA STATEMENT

119.7 HECTARE
295.8 ACRE
1196768.7 SQM

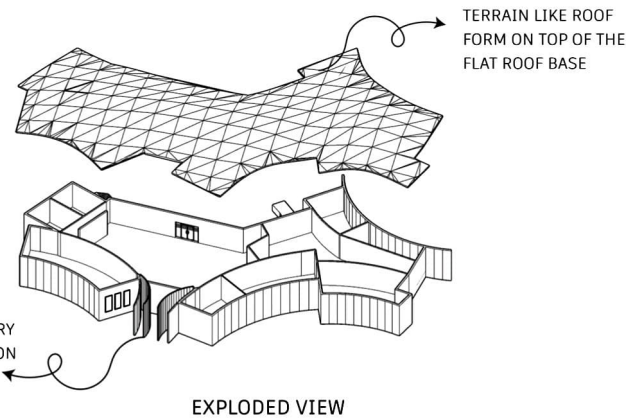


THE ADMINISTRATION BLOCK IS ACTS AS A TRANSITIONAL SPACE BETWEEN CONTROL AND COLLECTIVE INTERACTION, REFLECTING THE IDEA OF "THE 95TH CENTIMETRE."

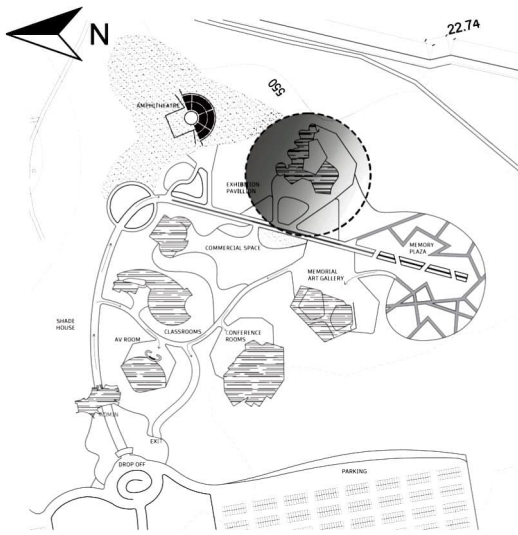
RIGID CURVILINEAR PLANNING REPRESENTS ORDER AND MEMORY OF OPPRESSION, WHILE SOFTER SPATIAL TRANSITIONS AND VISUAL CONNECTIVITY INTRODUCE A SENSE OF ACCESSIBILITY, DIALOGUE, AND HEALING.



VIEWS

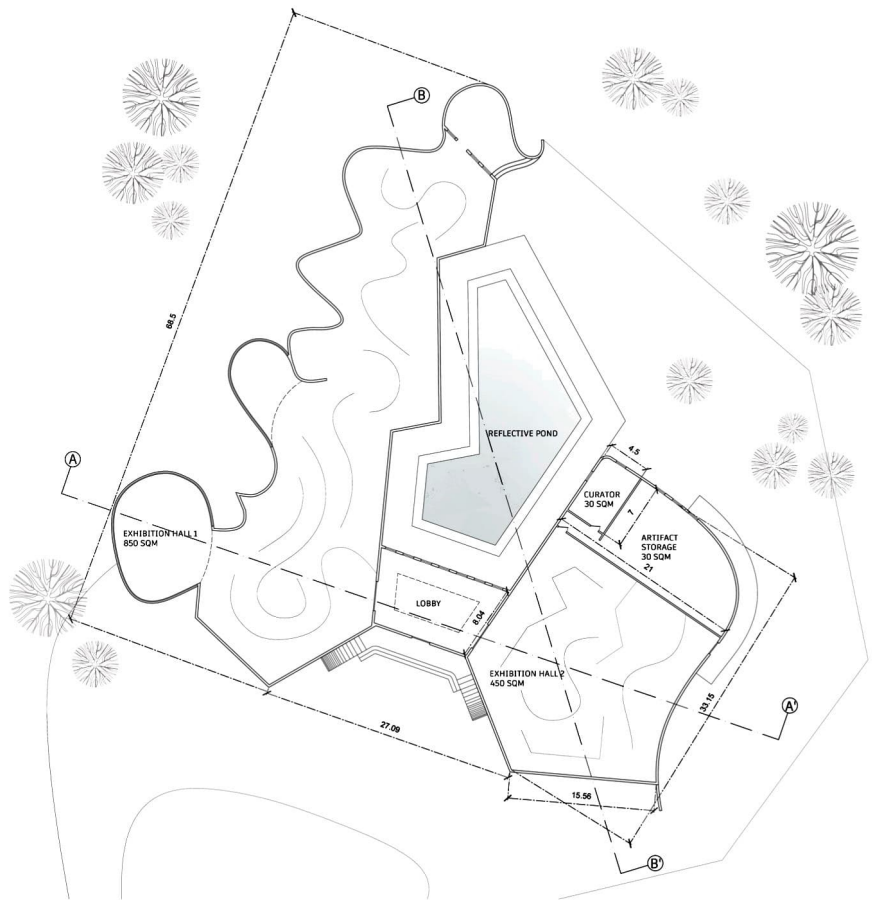


ALL DIMENSIONS ARE IN M SCALE 1:200



THE PAVILLION IS ORGANIZED THROUGH **FRAGMENTED EXHIBITION VOLUMES** CONNECTED BY A CENTRAL LOBBY AND REFLECTIVE LANDSCAPE ELEMENTS, REINFORCING THE IDEA OF INTERRUPTED MEMORIES AND EMOTIONAL TRANSITION.

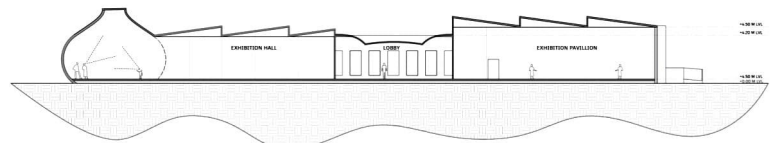
REFLECTIVE POND INTRODUCES STILLNESS AND CONTEMPLATION WITHIN THE CIRCULATION SEQUENCE. PAVILLION NOT ONLY AS AN EXHIBITION SPACE, BUT AS AN EXPERIENTIAL ARCHITECTURAL NARRATIVE THAT **TRANSFORMS HISTORICAL TRAUMA INTO COLLECTIVE REMEMBRANCE AND ACTIVE PUBLIC CONSCIOUSNESS.**



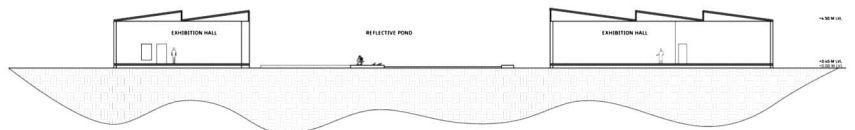
FLOOR PLAN



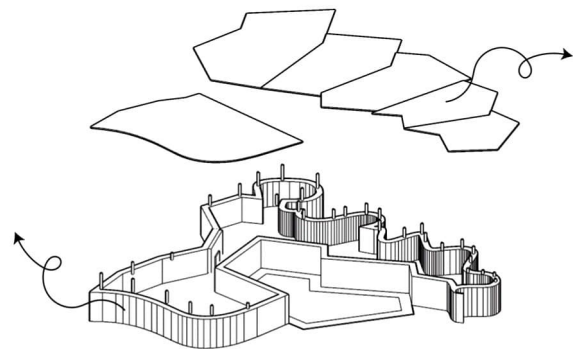
VIEWS



SECTION AA'



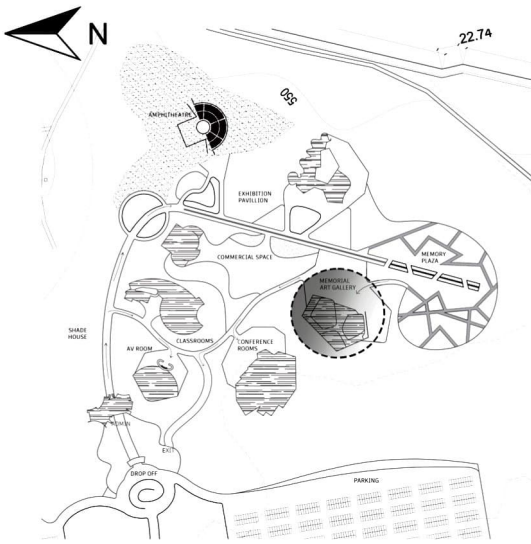
SECTION BB'



EXPLODED VIEW

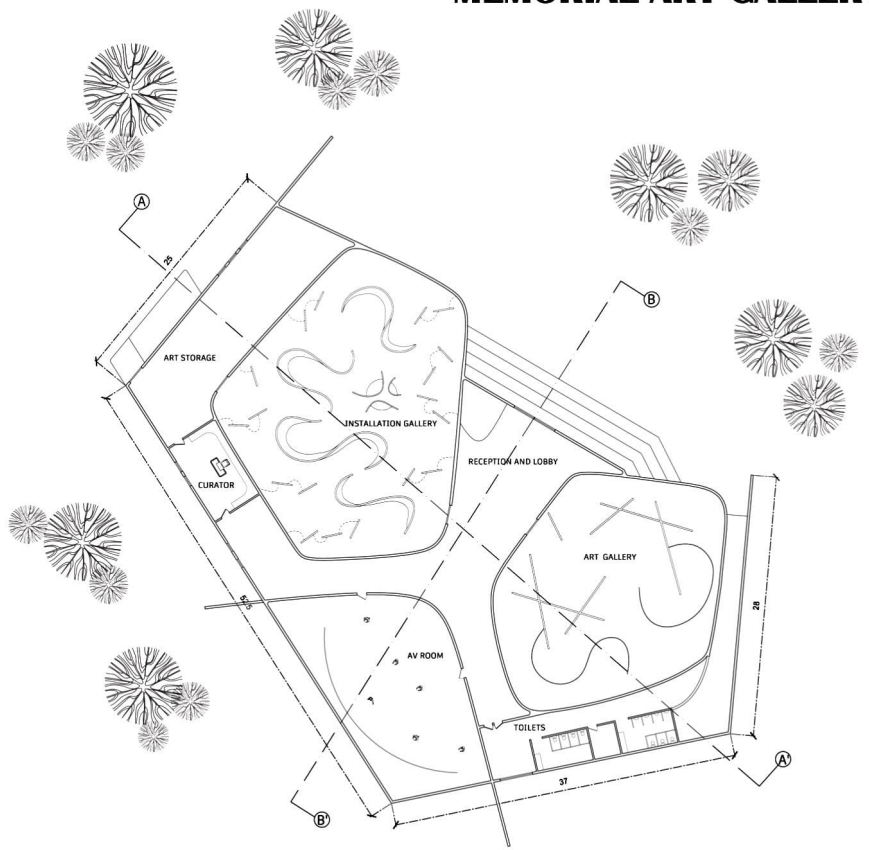
ALL DIMENSIONS ARE IN M
SCALE 1:200

SHREE HARINI S | 230101601033
IIIRD YEAR SEM:VI

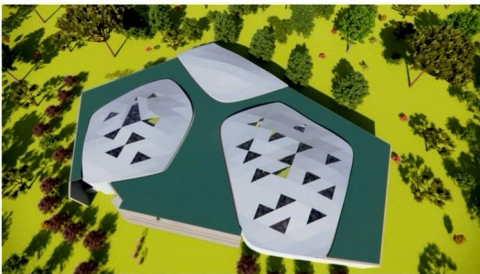
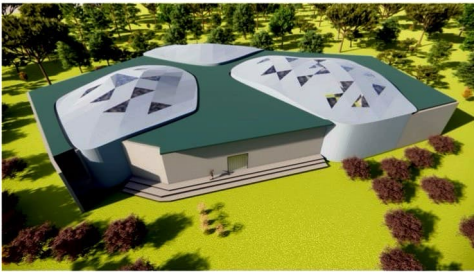


INTEGRATED WITH THE SURROUNDING MEMORIAL LANDSCAPE, THE MEMORIAL ART GALLERY ACTS AS BOTH A CULTURAL INSTITUTION AND AN EMOTIONAL ARCHIVE,

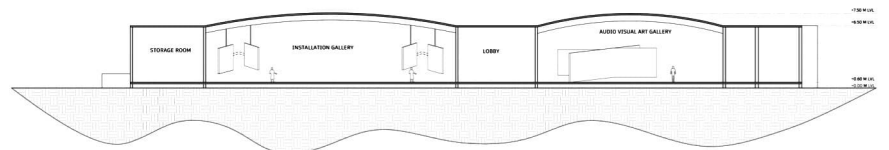
WHERE ARCHITECTURE, ART, AND MEMORY TOGETHER CREATE A JOURNEY FROM TRAUMA TOWARD AWARENESS, EMPATHY, AND COLLECTIVE HEALING.



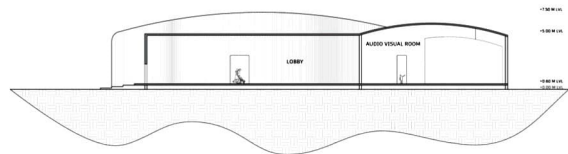
FLOOR PLAN



VIEWS

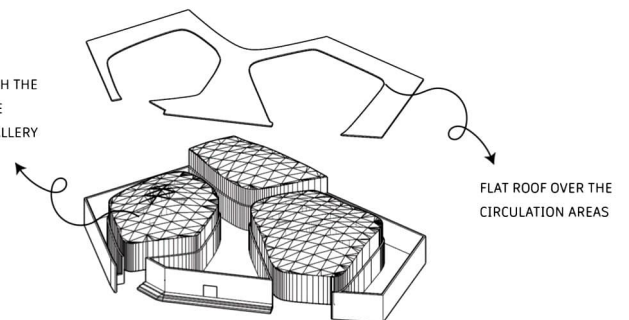


SECTION AA'



SECTION BB'

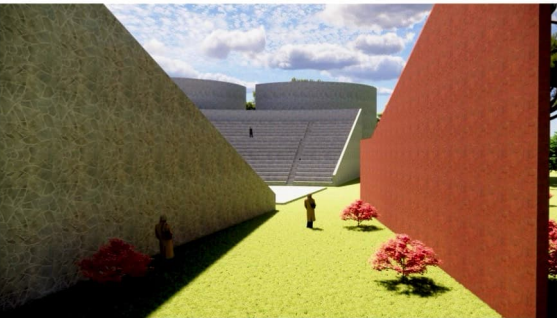
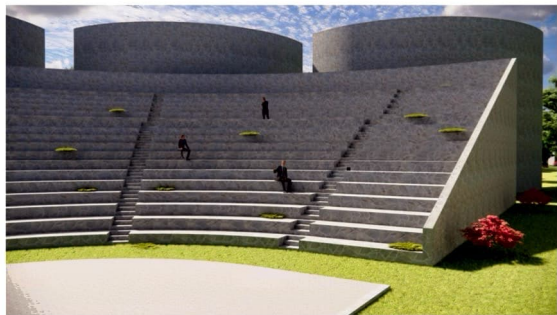
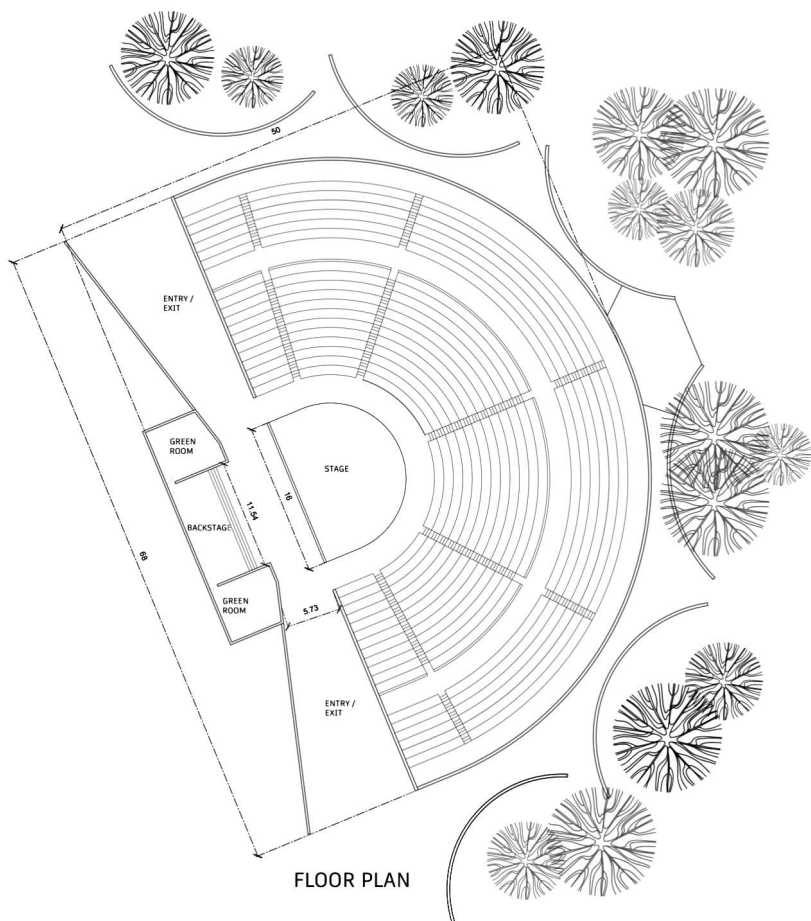
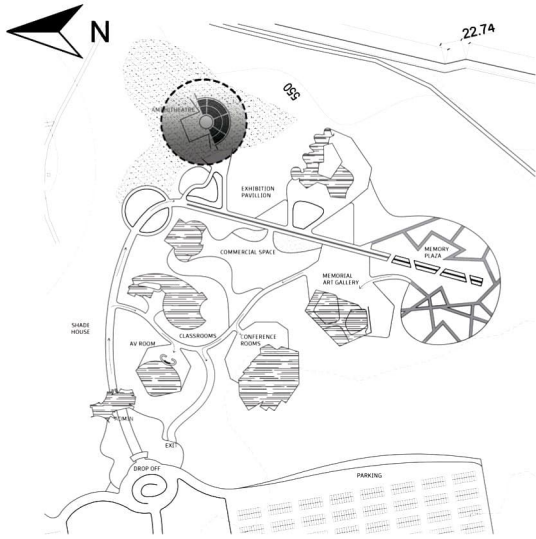
DOMED ROOF ALONG WITH THE WALLS TO FACILITATE THE INSTALLATIONS IN THE GALLERY



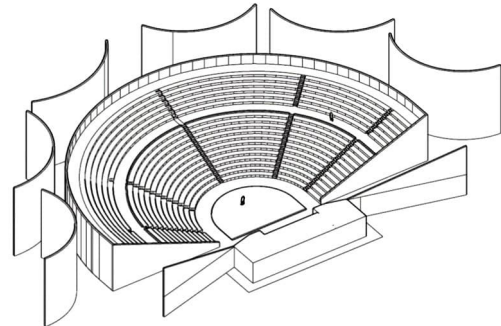
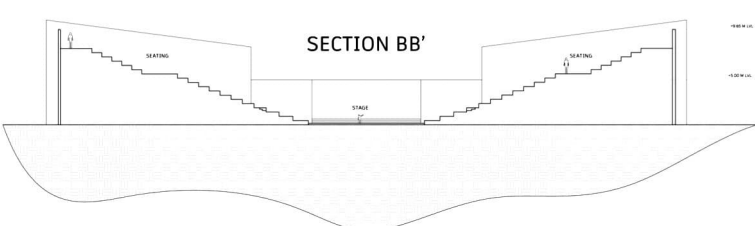
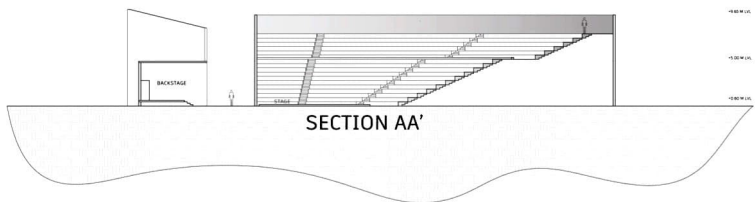
EXPLODED VIEW

ALL DIMENSIONS ARE IN M
SCALE 1:200

SHREE HARINI S | 230101601033
IIIRD YEAR SEM:VI

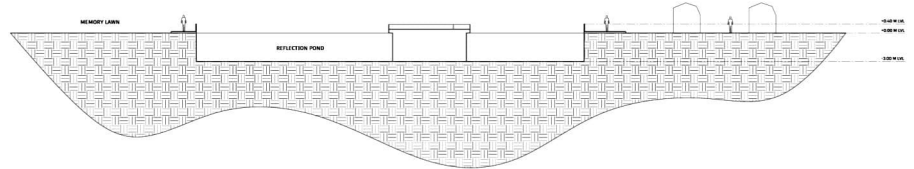
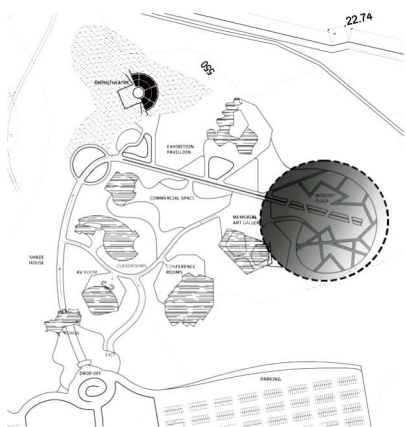
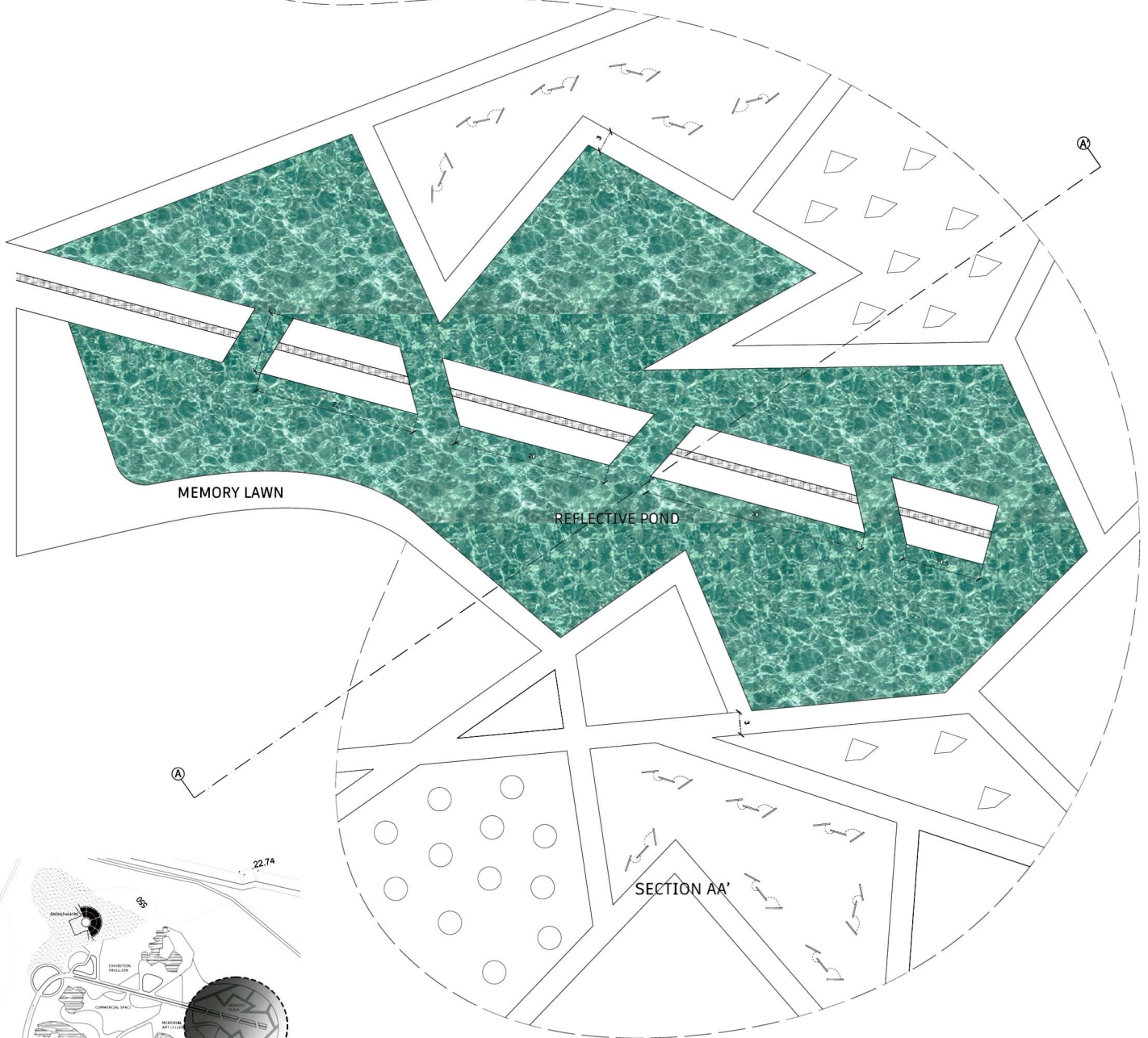


VIEWS

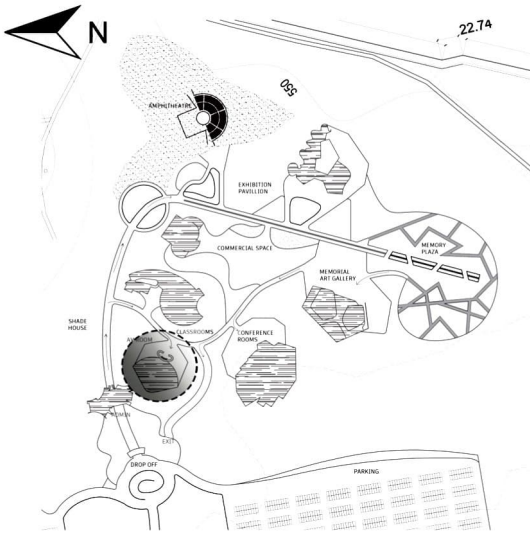


EXPLODED VIEW

ALL DIMENSIONS ARE IN M
SCALE 1:200

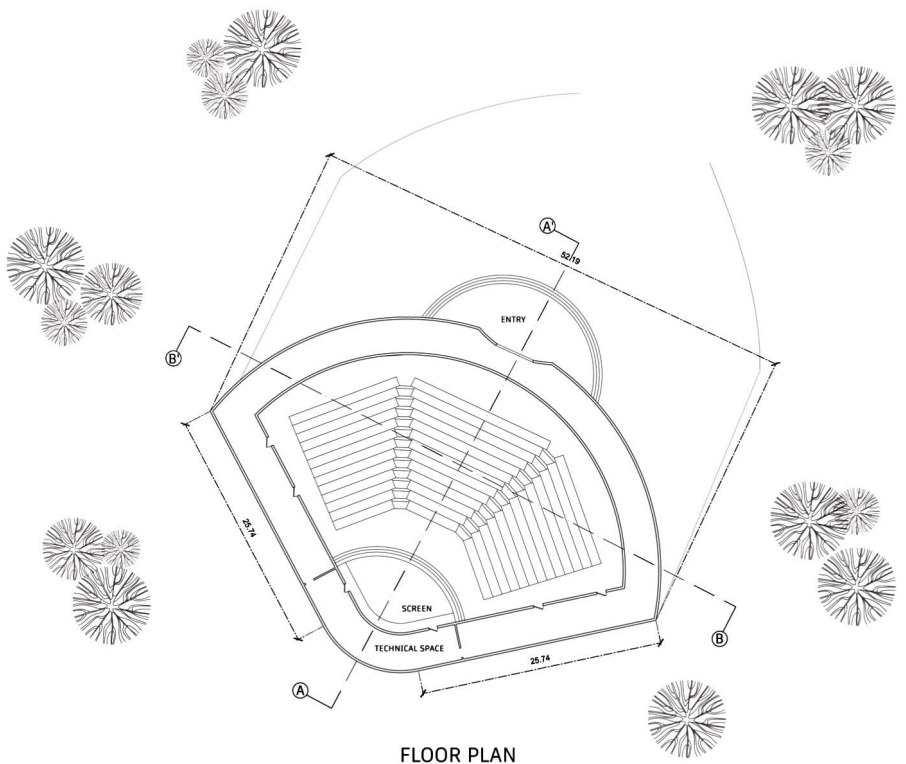


ALL DIMENSIONS ARE IN M
SCALE 1:200

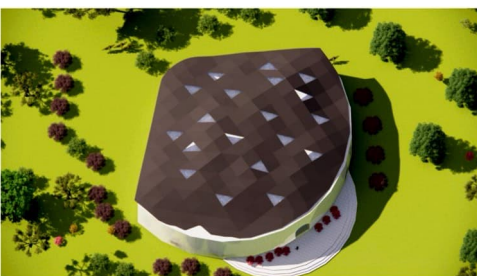
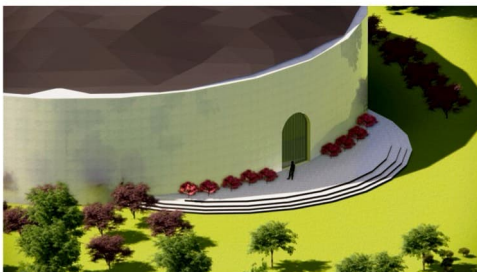


THE **CURVED GEOMETRY** OF THE HALL EMBRACES THE AUDIENCE, DIRECTING FOCUS TOWARD THE CENTRAL SCREEN WHILE SIMULTANEOUSLY CREATING A SENSE OF CONTAINMENT AND EMOTIONAL IMMERSION.

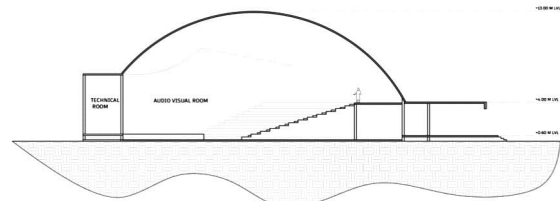
THE **RADIAL ORGANIZATION OF THE SEATING** REINFORCES COLLECTIVE WITNESSING, WHILE THE COMPRESSED ENTRY TRANSITION HEIGHTENS THE **PSYCHOLOGICAL SHIFT** FROM THE EXTERIOR MEMORIAL LANDSCAPE INTO A DARKENED CONTEMPLATIVE ENVIRONMENT.



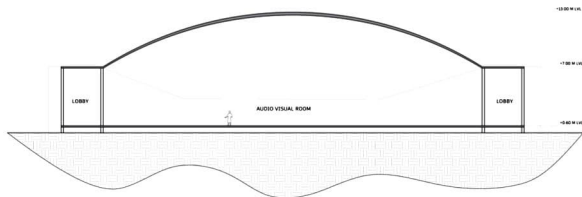
FLOOR PLAN



VIEWS

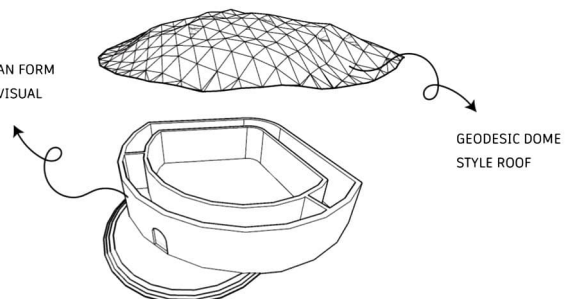


SECTION AA'



SECTION BB'

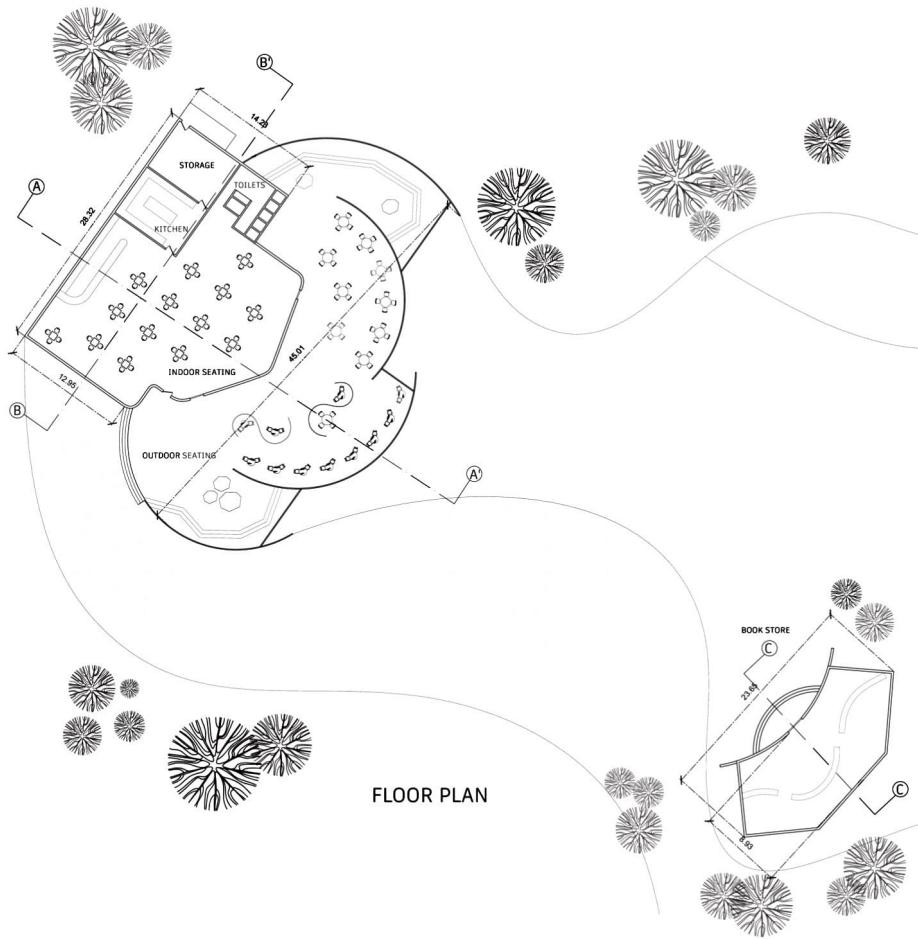
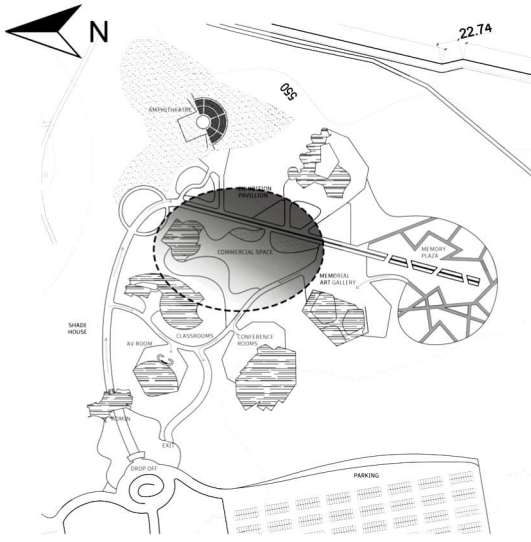
FAN SHAPED PLAN FORM FOR EFFECTIVE VISUAL EXPERIENCE



EXPLODED VIEW

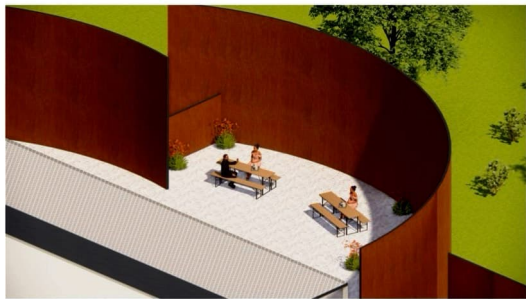
ALL DIMENSIONS ARE IN M
SCALE 1:200

SHREE HARINI S | 230101601033
IIIRD YEAR SEM:VI

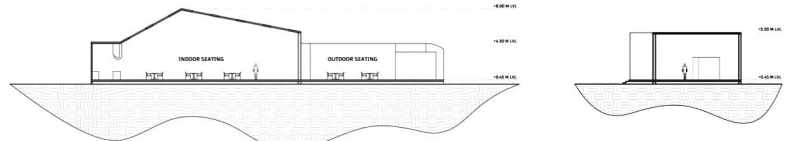


MEMORIAL CAFÉ SERVES AS A SOCIALEXTENSION OF THE INTERPRETATION CENTRE – A SPACE WHERE MEMORY, CONVERSATION, AND COMMUNITY INTERSECT. THROUGH ITS ORGANIC FORM, SPATIAL OPENNESS, SCALE.

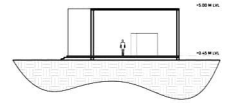
THE CAFÉ CREATES A **BALANCE BETWEEN REFLECTION AND COMFORT**, OFFERING VISITORS A MOMENT OF CALM WITHIN THE BROADER NARRATIVE OF REMEMBRANCE AND HEALING.



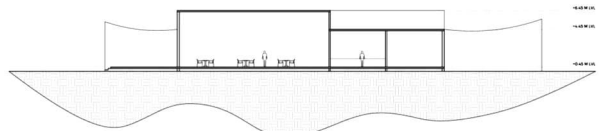
FLOOR PLAN



SECTION AA'

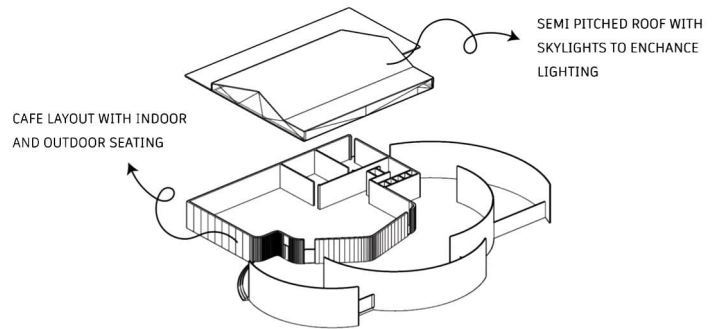


SECTION CC'



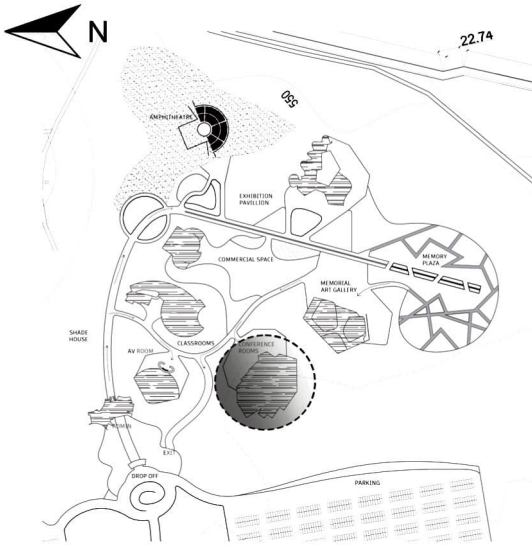
SECTION BB'

VIEWS



EXPLODED VIEW

ALL DIMENSIONS ARE IN M
SCALE 1:200

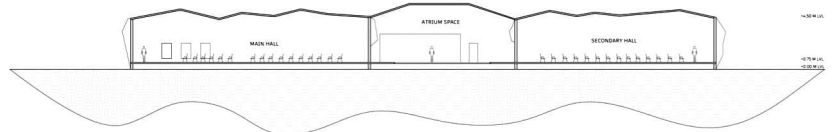


THE COMPLEX IS ORGANIZED AROUND A CENTRAL ATRIUM SPACE THAT ACTS AS A SHARED INTERACTIVE CORE CONNECTING THE MAIN HALL, SECONDARY HALLS, MEETING ROOMS, RECEPTION, AND ADMINISTRATIVE FUNCTIONS.

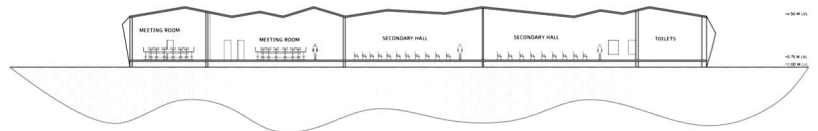
NATURAL LIGHT, INTERNAL COURTYARDS, AND LANDSCAPED EDGES SOFTEN THE RIGID ARCHITECTURAL FORMS, BALANCING INSTITUTIONAL CHARACTER WITH HUMAN EXPERIENCE.



FLOOR PLAN

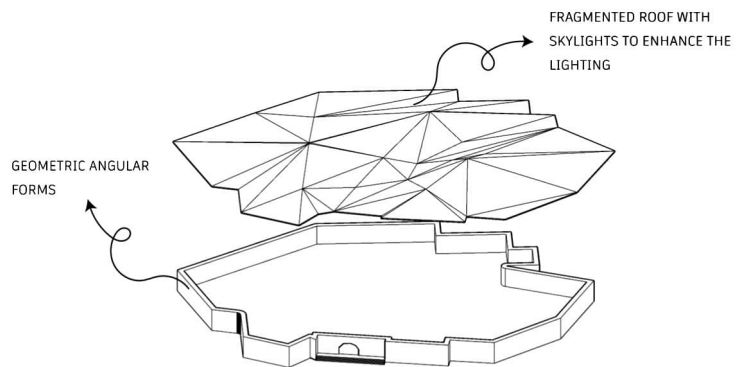


SECTION AA'



SECTION BB'

VIEWS



EXPLODED VIEW

ALL DIMENSIONS ARE IN M
SCALE 1:200