

# SITE ANALYSIS AND CONCEPT SHEET

## INTERPRETATION CENTER

### SITE CONTEXT

LOCATION - SAN MIGUEL DE TUCUMAN, ARGENTINA  
 LATITUDE - 26.75 SOUTH  
 LONGITUDE - 65.20 WEST  
 TERRAIN - MOSTLY VALLEY - FOOTHILLS OF ANDES  
 CLIMATE - SUBTROPICAL (SEMI HUMID)

### TOPOGRAPHY

LIKELY GENTLE SLOPES TOWARDS THE PLAIN SITE HAS EXISTING CONTOURS  
 VISTAS - WEST SIDE ANDES HILLS  
 VEGETATION - SEMI DENSE GALLERY

### CLIMATE ANALYSIS

SUMMER TEMPERATURE - 30 - 40 DEGREE CELSIUS (HOT)  
 WINTER TEMPERATURE - 10 - 20 DEGREE CELSIUS (MILD)  
 RAINFALL - MOSTLY IN SUMMER  
 HUMIDITY - MEDIUM - HIGH



### PROJECT DESCRIPTION

THE PROJECT FOCUSES ON TRANSFORMING A 350-HECTARE ABANDONED MILITARY SITE IN SAN MIGUEL DE TUCUMÁN, ARGENTINA, INTO A MEANINGFUL PUBLIC SPACE CALLED THE ARSENAL MEMORY PARK.

THIS SITE ONCE FUNCTIONED AS A CLANDESTINE DETENTION, TORTURE, AND EXTERMINATION CENTER DURING THE MILITARY DICTATORSHIP (1976-1978), WHERE MANY PEOPLE LOST THEIR LIVES.

THE AIM OF THE PROJECT IS TO PRESERVE THE PAINFUL HISTORY OF THE SITE WHILE GIVING IT A NEW SOCIAL AND URBAN PURPOSE. THE DESIGN PROPOSES A LARGE URBAN PARK COMBINED WITH AN INTERPRETATION CENTER THAT EDUCATES VISITORS ABOUT PAST EVENTS AND CREATES AWARENESS TO PREVENT SUCH TRAGEDIES IN THE FUTURE.

### CONCEPT

PENITENTINO IS THE CONDITION WHERE HIDDEN LAYERS OF THE PAST EXIST BENEATH THE PRESENT SURFACE, ONLY BECOME VISIBLE OVER TIME.

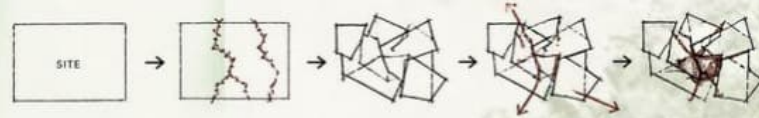
THE DESIGN IS BASED ON ANGULAR AND SHARP GEOMETRIES TO EXPRESS THE EMOTIONAL INTENSITY OF THE SITE'S PAST. THE FRAGMENTED PLAN FORM REFLECTS DISRUPTION, VIOLENCE, AND INSTABILITY, CREATING A SPATIAL LANGUAGE THAT MAKES VISITORS FEEL THE HISTORY RATHER THAN JUST SEE IT.

AS THE PLAN PROGRESSES, THESE RIGID FORMS BEGIN TO OPEN, CONNECT, AND SOFTEN, SYMBOLIZING THE TRANSITION FROM PAST → PRESENT → FUTURE.

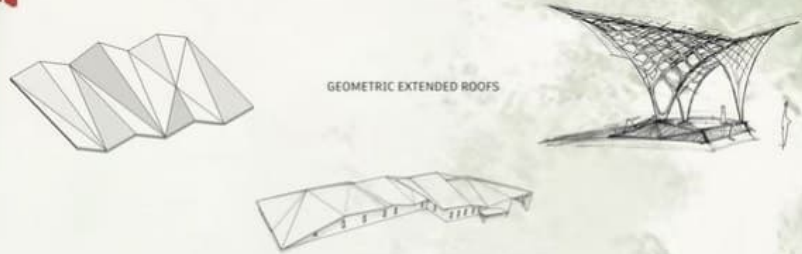
### CONCEPT



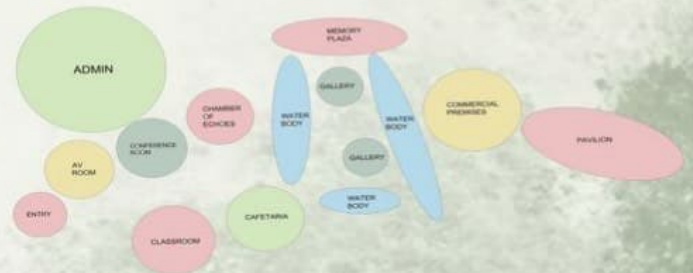
### FORM DEVELOPMENT



### ROOF FORM AND SHADED STRUCTURES

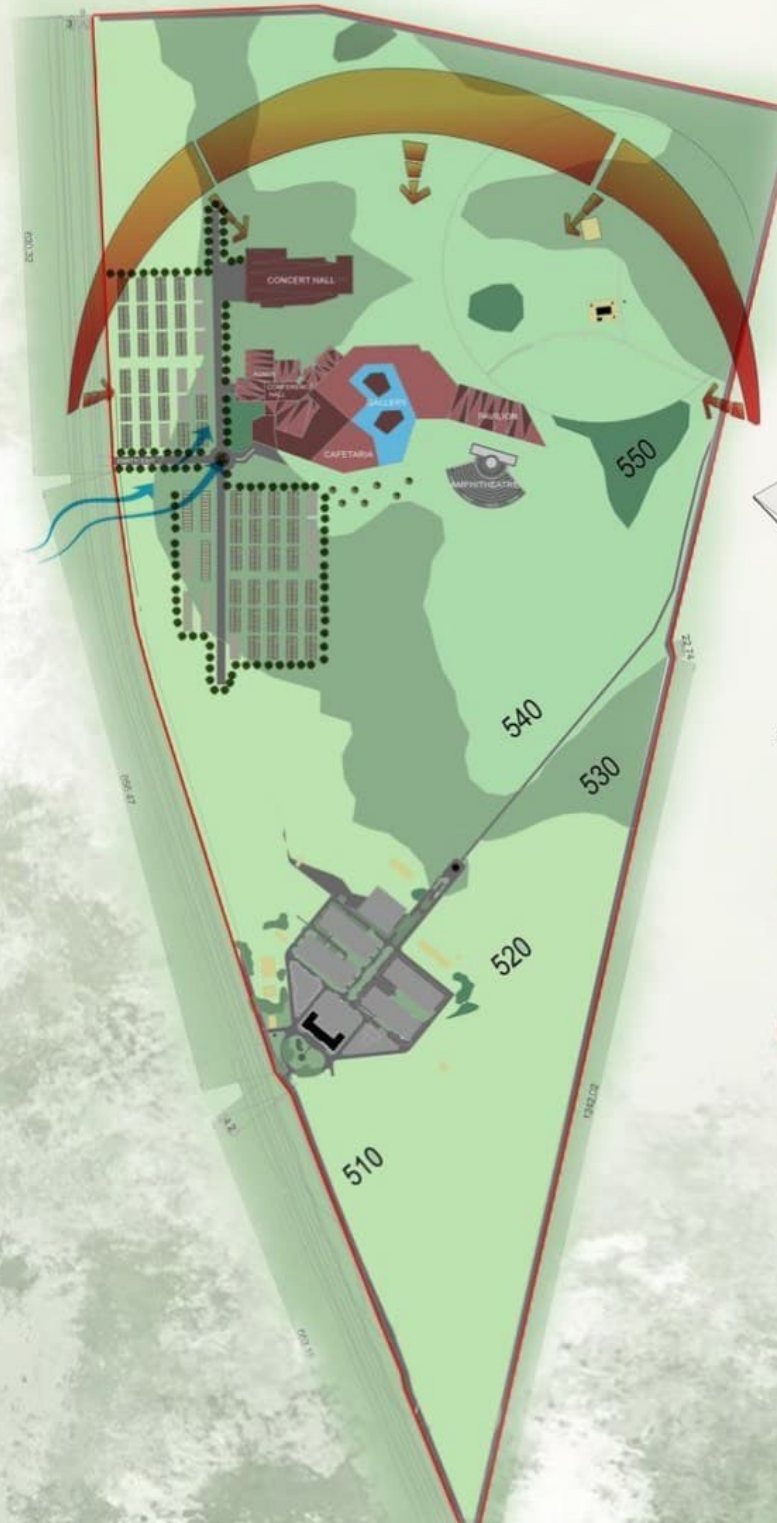


### BUBBLE DIAGRAM



### VEGETATION

- JACARANDA TREE - THE FALLING PURPLE BLOSSOMS SYMBOLIZE FLEETING MEMORIES AND EMOTIONAL FRAGILITY
- SOFT CARPET OF FLOWERS CREATES A POETIC ATMOSPHERE
- SILVER BIRCH - ITS PALE BARK SYMBOLIZE PURITY, RENEWAL AND HEALING
- DURANTA - TRANSITIONAL LANDSCAPE ELEMENT SYMBOLIZE GRADUAL SHIFT OF EMOTION
- BOUGAINVILLEA - REPRESENTS RESILIENCE AND EMOTIONAL SURVIVAL



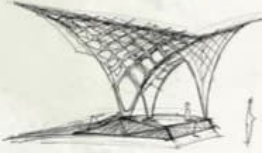
# SITE PLAN

## INTERPRETATION CENTER

### PROJECT DESCRIPTION

THE PROJECT FOCUSES ON TRANSFORMING A 350-HECTARE ABANDONED MILITARY SITE IN SAN MIGUEL DE TUCUMÁN, ARGENTINA, INTO A MEANINGFUL PUBLIC SPACE CALLED THE ARSENAL MEMORY PARK

### CANOPY STRUCTURES



THE ANGULAR CANOPY REPRESENTS MOVEMENT, TRANSITION AND EMOTIONAL PROGRESSION

ANGULAR FORMS CREATE CHANGING PERSPECTIVES, DRAMATIC SHADOW AND DIRECTIONAL FLOW

### FORM DEVELOPMENT



### VEGETATION



**BOUGAINVILLEA**  
REPRESENTS RESILIENCE AND VIBRANCY EMERGING OF SORROW



**DURANTA**  
USED FOR TRANSITIONAL PLANTING



**JACARANDA**  
PURPLE SEASONAL BLOOMS SYMBOLISE REMEMBRANCE



**SILVER BIRCH**  
WHITE BARK SYMBOLIZES PURITY, HEALING



GALPON

### PROJECT DESCRIPTION

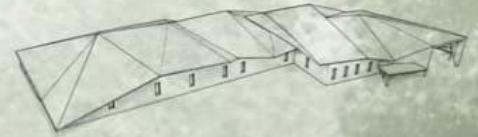
THIS SITE ONCE FUNCTIONED AS A CLANDESTINE DETENTION, TORTURE, AND EXTERMINATION CENTER DURING THE MILITARY DICTATORSHIP 1976-1978, WHERE MANY PEOPLE LOST THEIR LIVES.

THE AIM OF THE PROJECT IS TO PRESERVE THE PAINFUL HISTORY OF THE SITE WHILE GIVING IT A NEW SOCIAL AND URBAN PURPOSE. THE DESIGN PROPOSES A LARGE URBAN PARK COMBINED WITH AN INTERPRETATION CENTER THAT EDUCATES VISITORS ABOUT PAST EVENTS AND CREATES AWARENESS TO PREVENT SUCH TRAGEDIES IN THE FUTURE.

### ROOF FORM



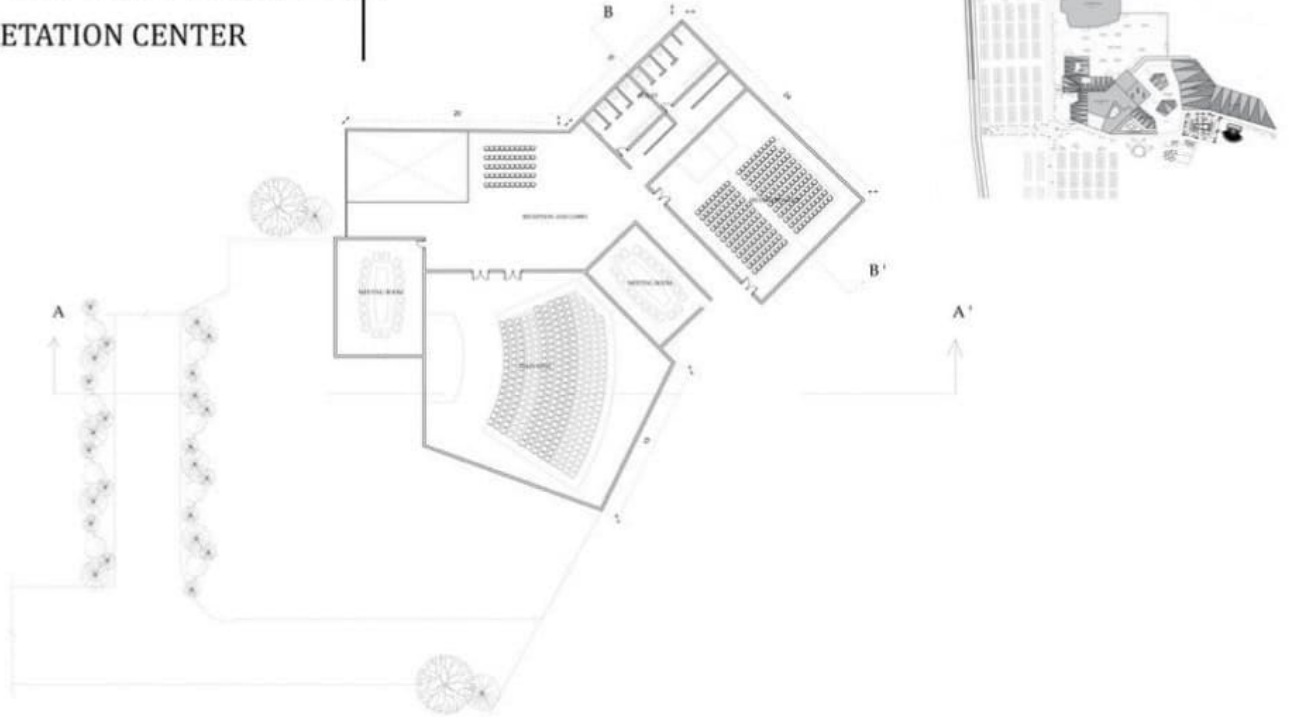
FRAGMENTED GEOMETRY SYMBOLISES LAYERS OF MEMORY AND EMOTIONAL TRANSITION  
CHANGING ROOF HEIGHTS GUIDE VISITORS PSYCHOLOGICALLY THROUGH DIFFERENT SPACES



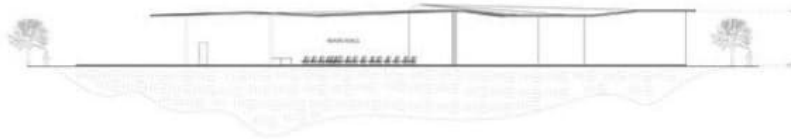
THE DESIGN IS BASED ON ANGULAR AND SHARP GEOMETRIES TO EXPRESS

THE EMOTIONAL INTENSITY OF THE SITE'S PAST. THE FRAGMENTED PLAN FORM REFLECTS DISRUPTION, VIOLENCE, AND INSTABILITY, CREATING A SPATIAL LANGUAGE THAT MAKES VISITORS FEEL THE HISTORY RATHER THAN JUST SEE IT.

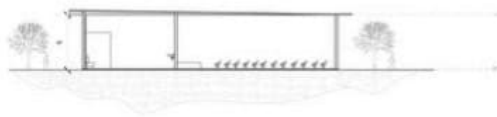
# CONFERENCE HALL INTERPRETATION CENTER



PLAN



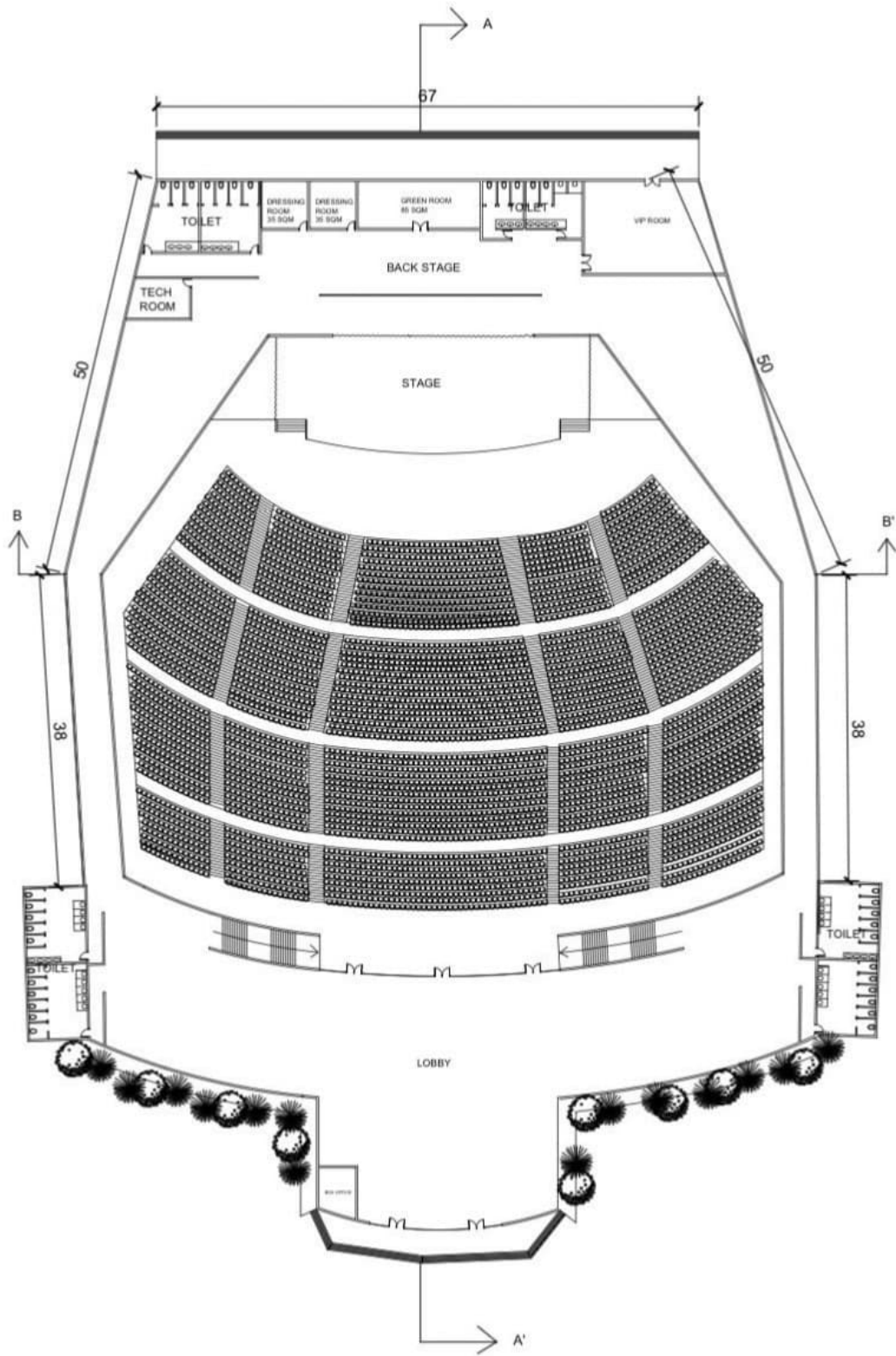
SECTION AA'



SECTION BB'



# CONCERT HALL

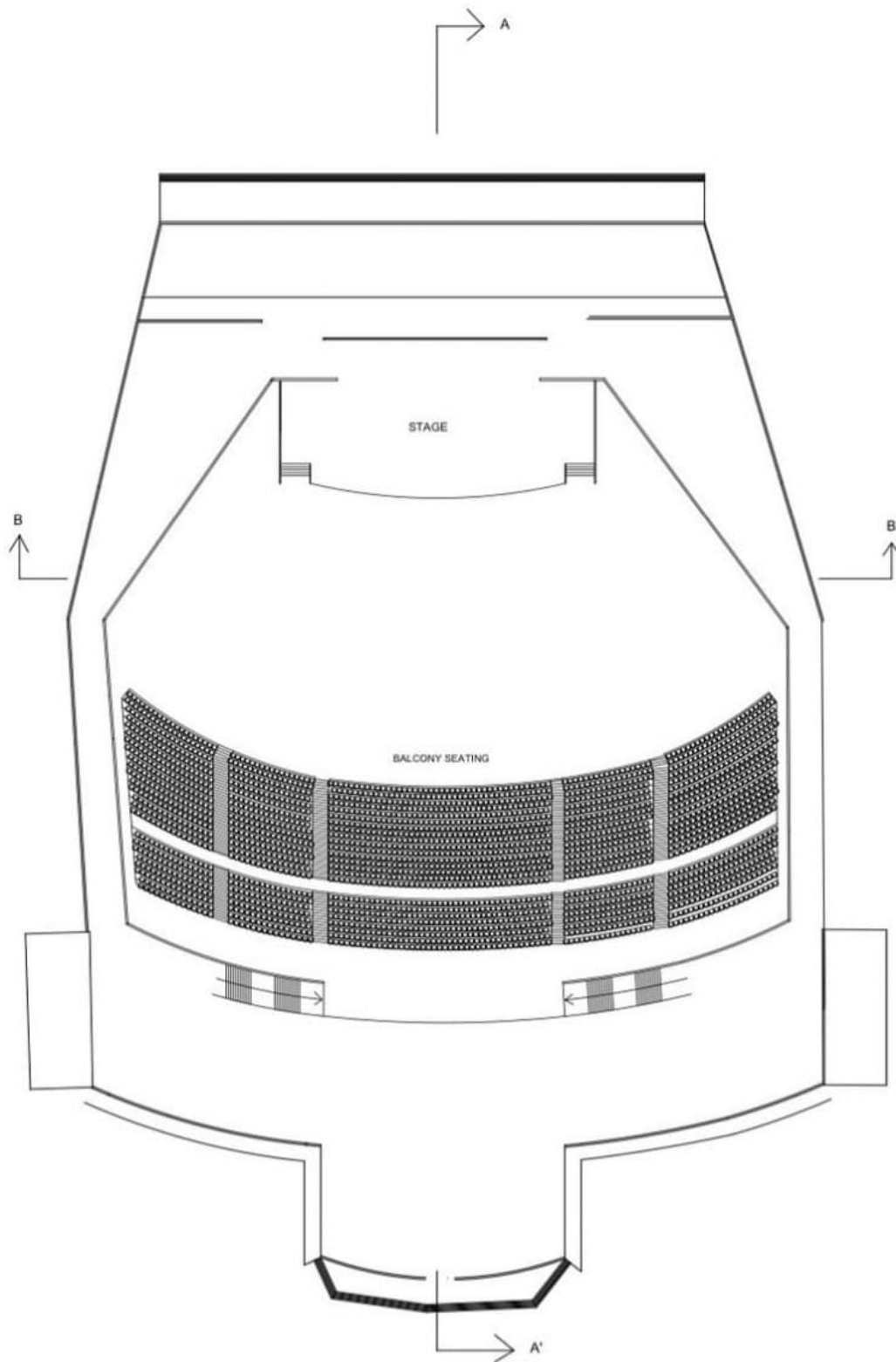


GROUND FLOOR PLAN

## INTERPRETATION CENTER

ALL DIMENSIONS ARE IN M SCALE 1: 200  
SUPRIDA|230101601035|B.ARCH III YEAR

# CONCERT HALL

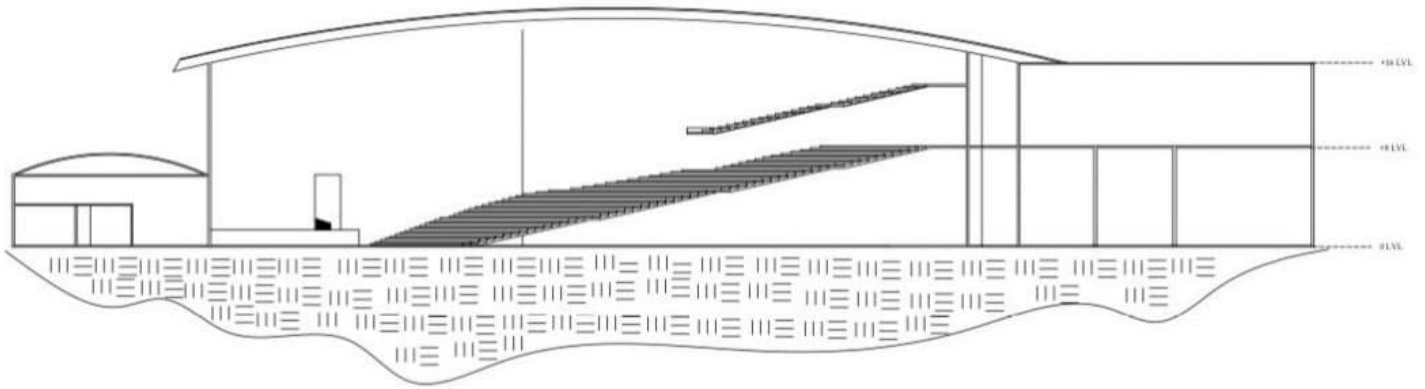


FIRST FLOOR PLAN

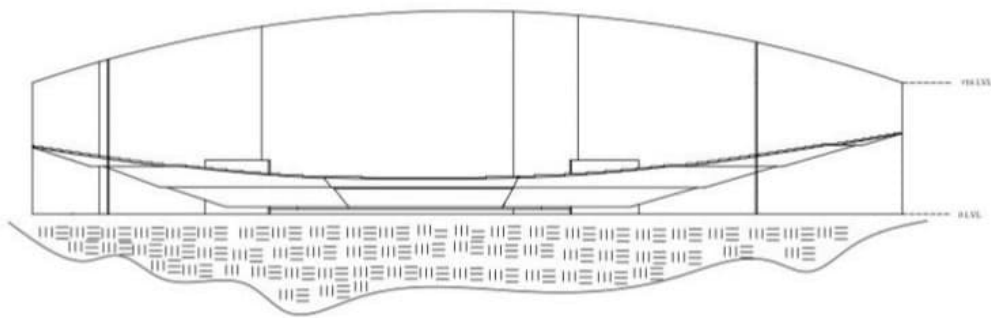
INTERPRETATION CENTER

ALL DIMENSIONS ARE IN M SCALE 1: 200  
SUPRIDA|230101601035|B.ARCH III YEAR

# CONCERT HALL - SECTION INTERPRETATION CENTER

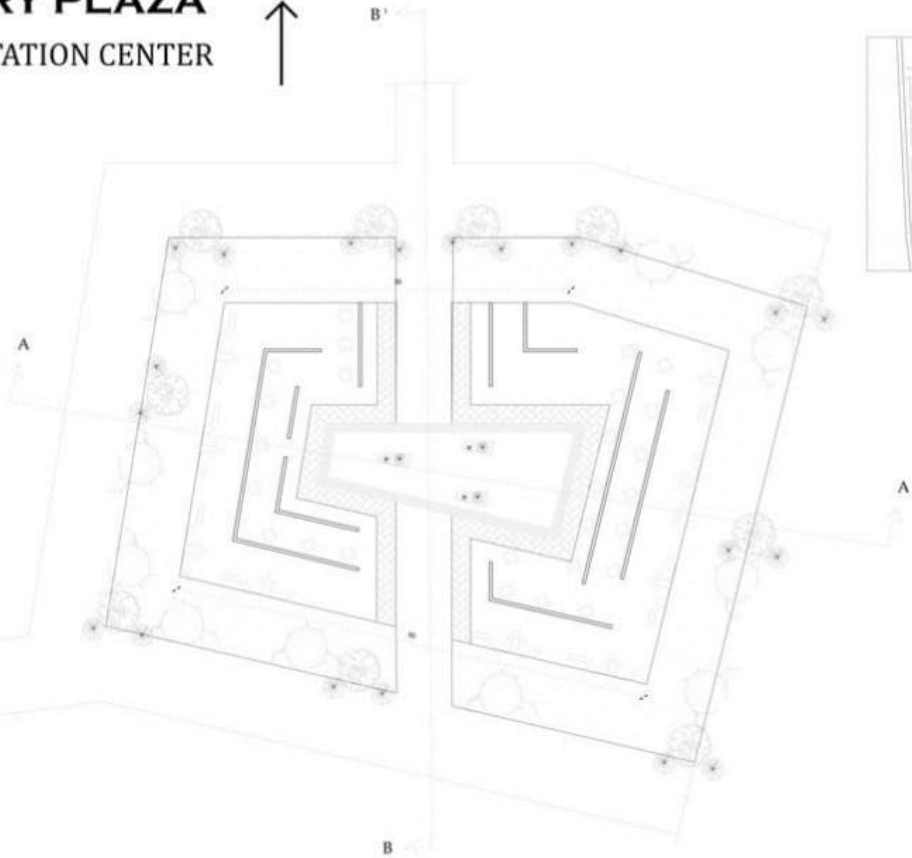
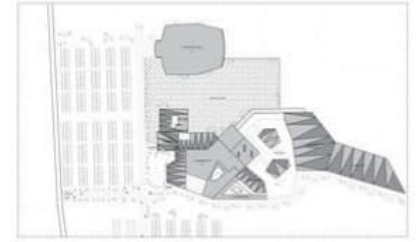


SECTION AA'

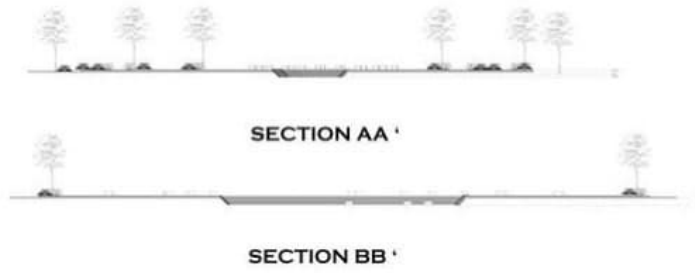


SECTION BB'

# MEMORY PLAZA INTERPRETATION CENTER



PLAN



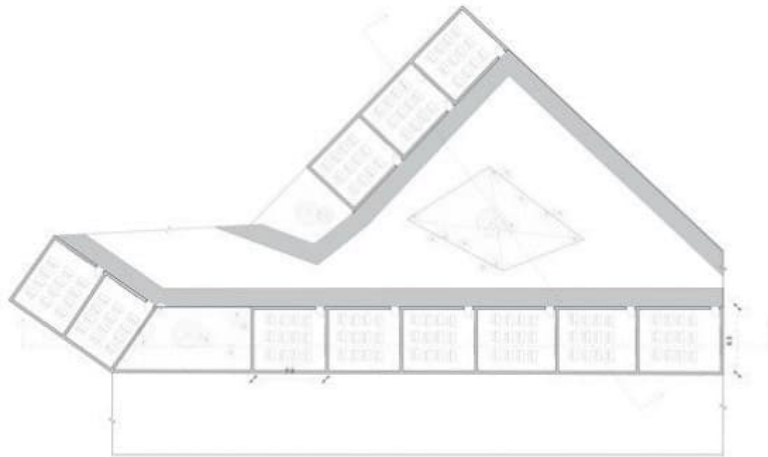
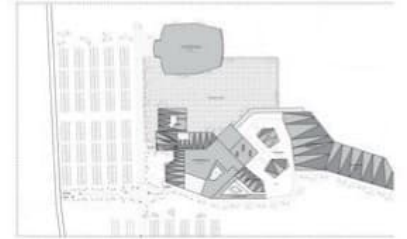
SECTION AA'

SECTION BB'

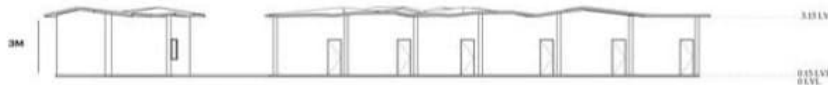


# CLASSROOM

## INTERPRETATION CENTER



PLAN



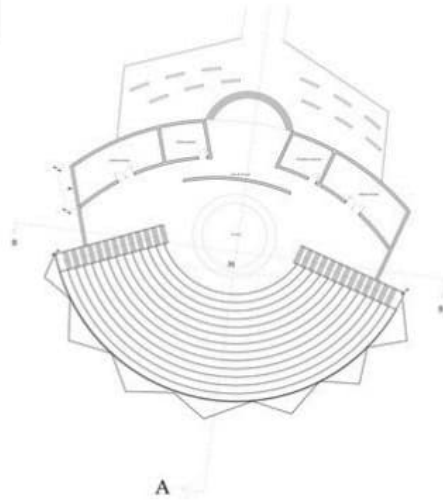
SECTION AA'



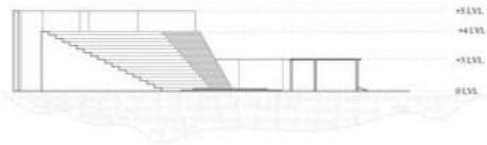
SECTION BB'



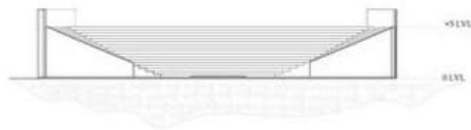
# AMPHITHEATRE INTERPRETATION CENTER



PLAN



SECTION AA '

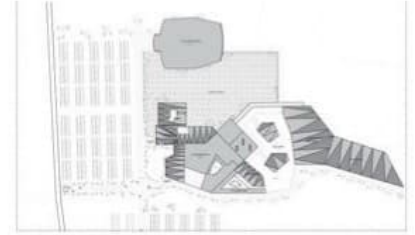
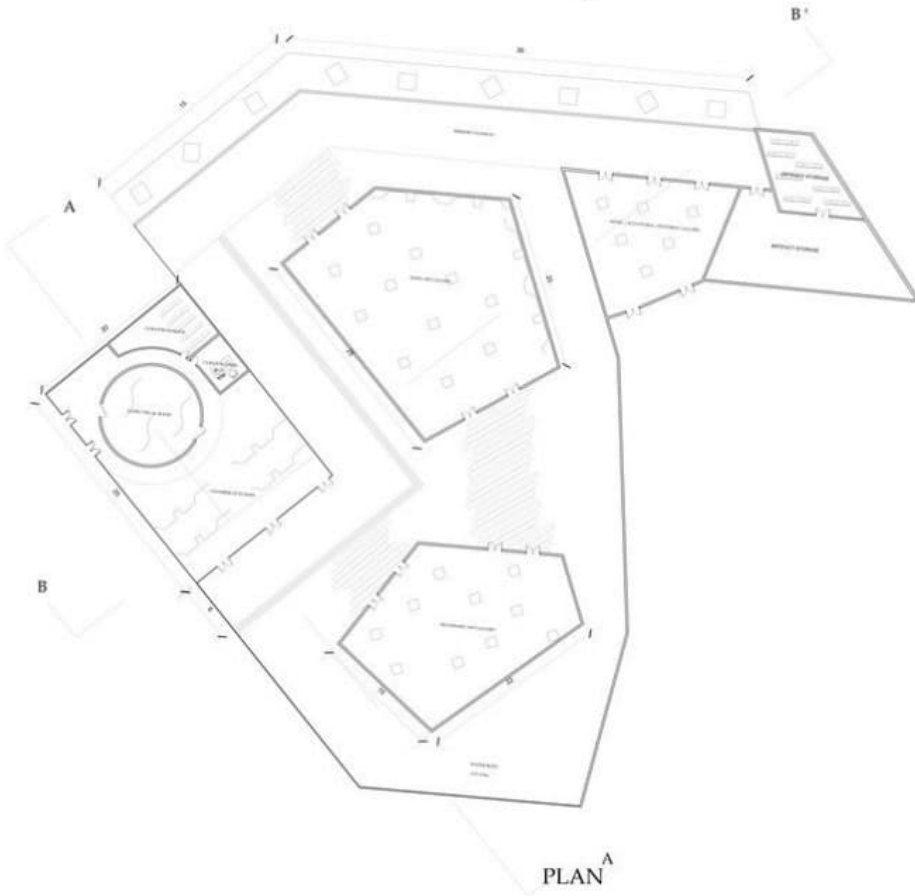


SECTION BB '

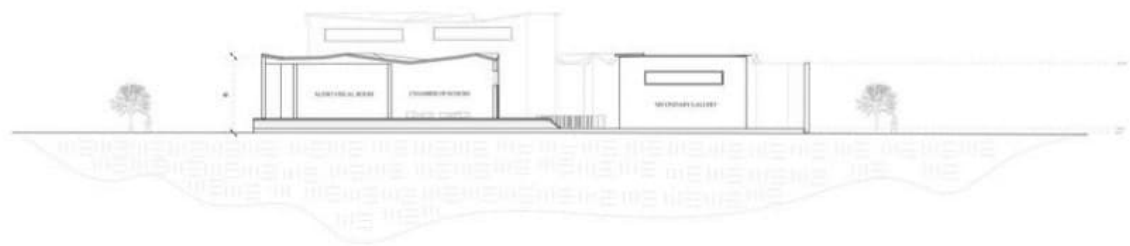


# HISTORICAL ART GALLERY

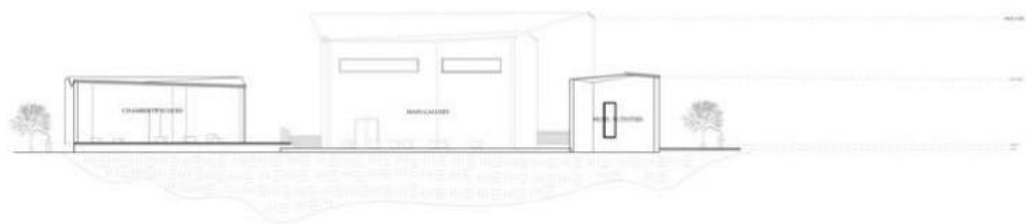
## INTERPRETATION CENTER



KEY PLAN



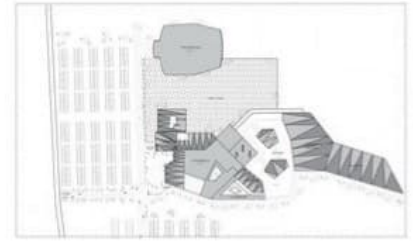
SECTION AA'



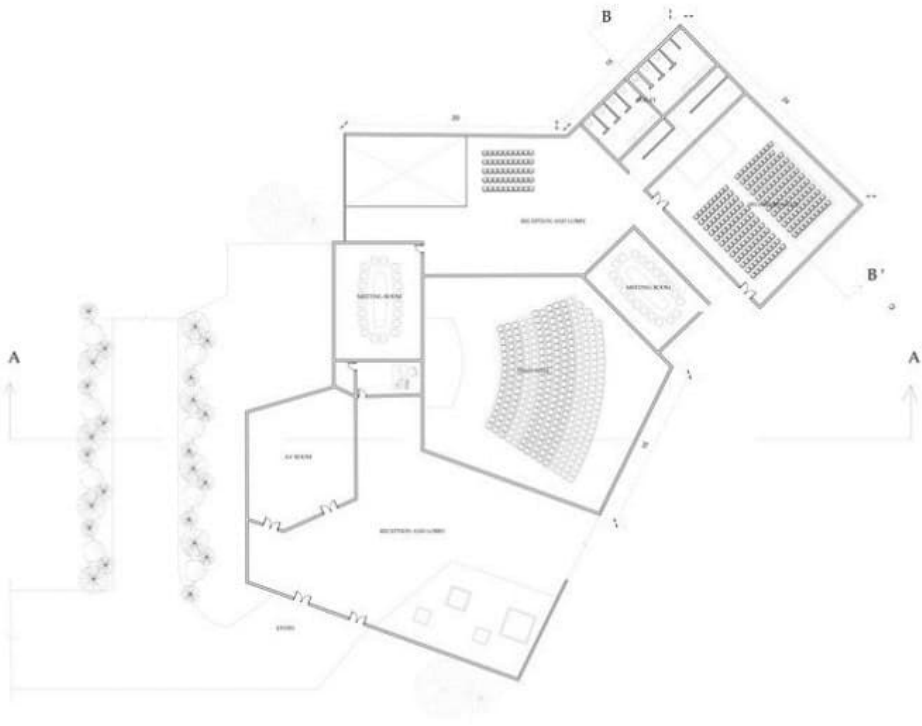
SECTION BB'



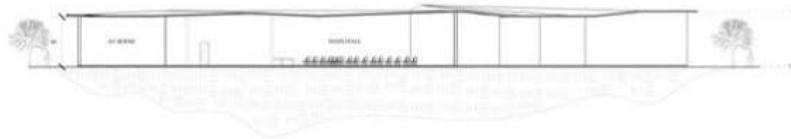
# ADMIN BLOCK INTERPRETATION CENTER



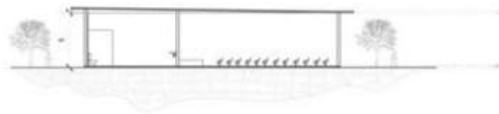
KEY PLAN



PLAN



SECTION AA'

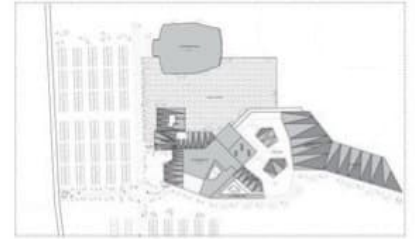
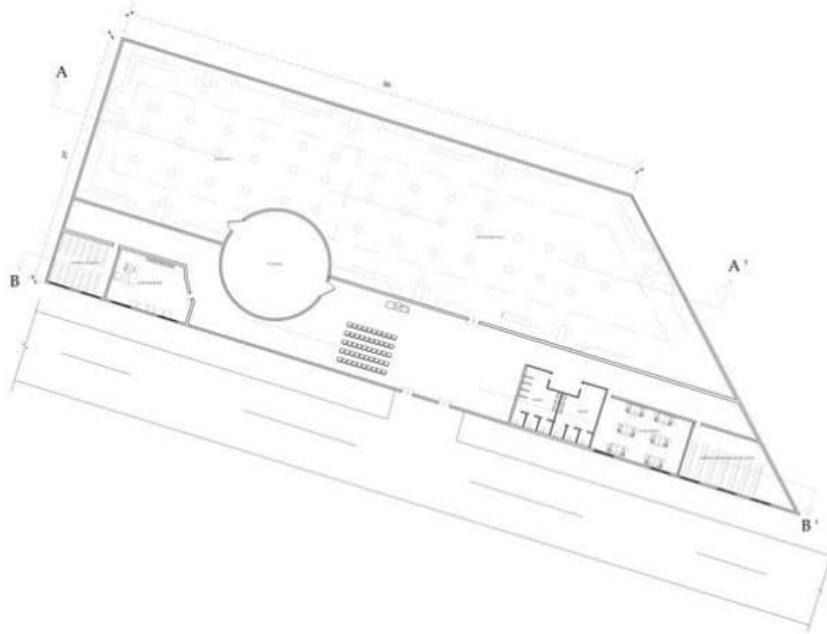


SECTION BB'

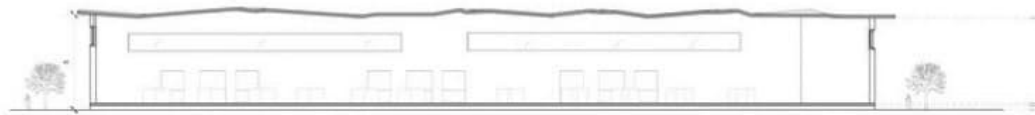


# HISTORICAL EXHIBITION PAVILION

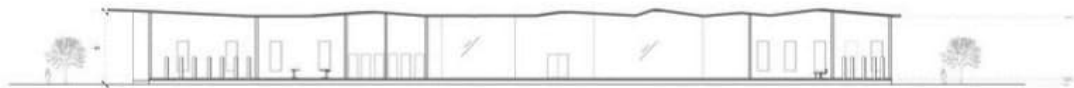
## INTERPRETATION CENTER



PLAN



SECTION AA'

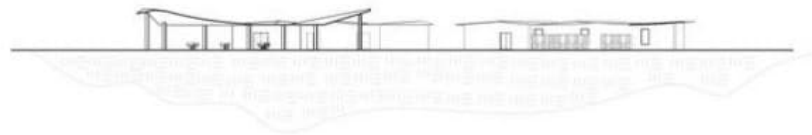
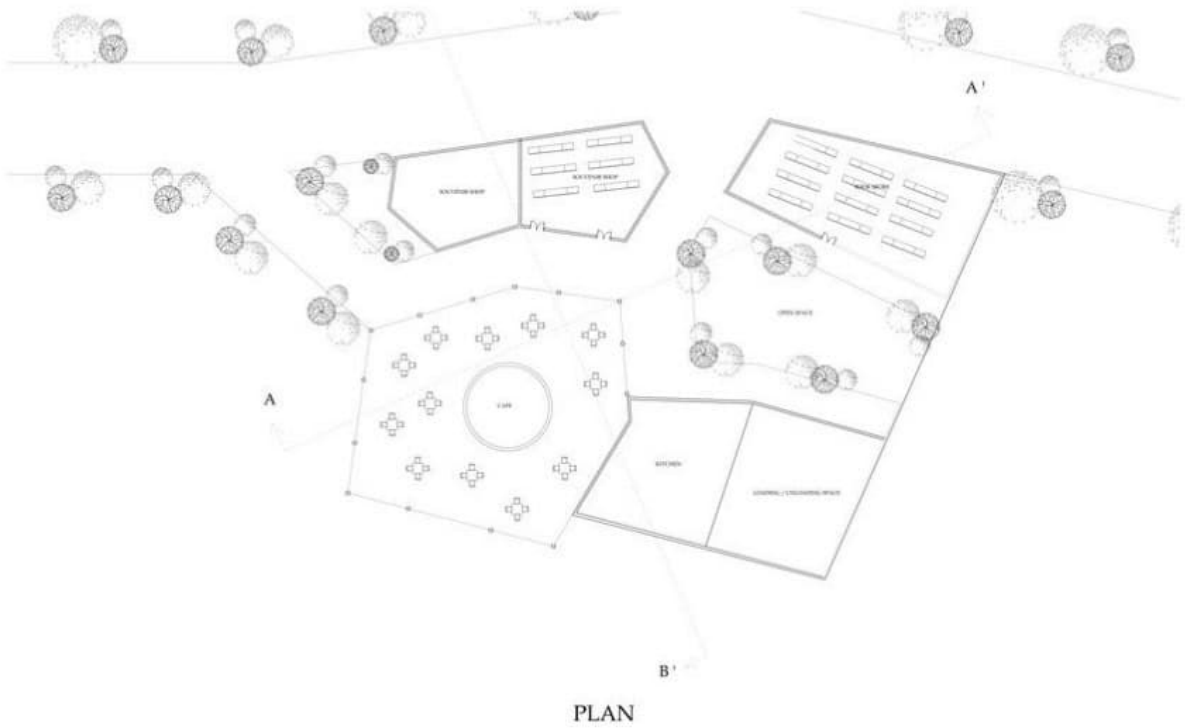


SECTION BB'



VIEWS

**ADMIN BLOCK**  
INTERPRETATION CENTER



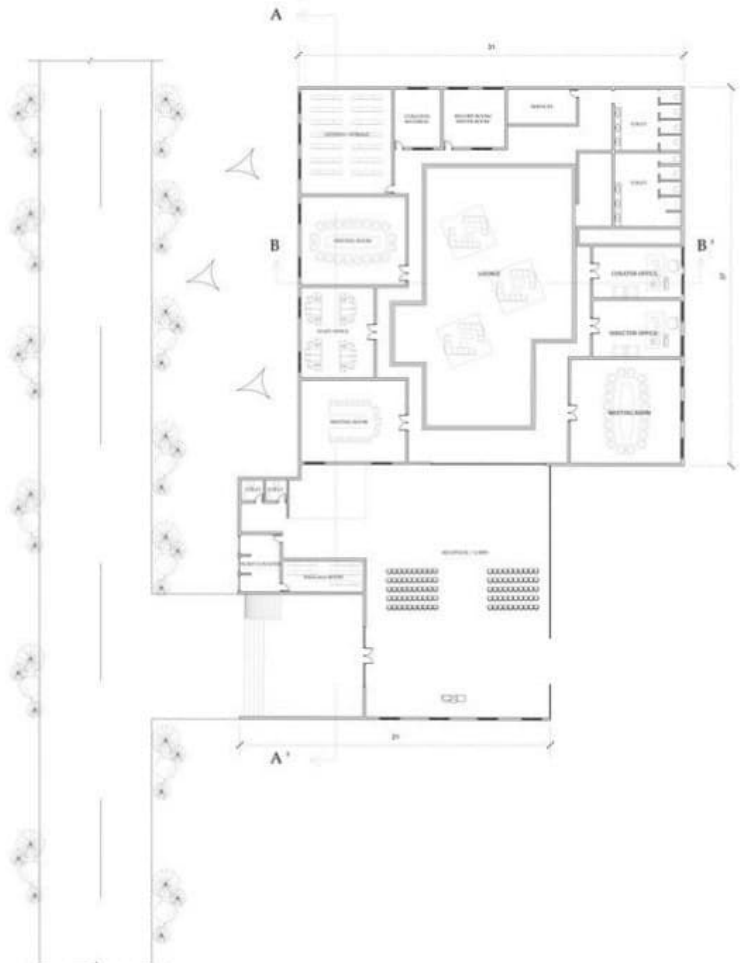
SECTION AA'



SECTION BB'

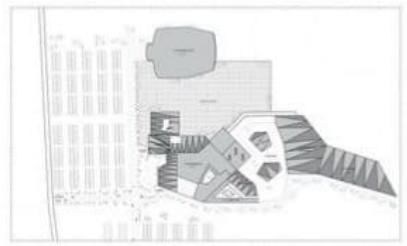


# ADMIN BLOCK INTERPRETATION CENTER



PLAN

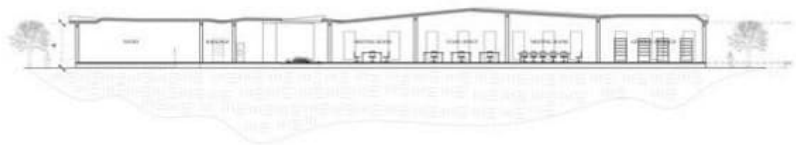
## KEY PLAN



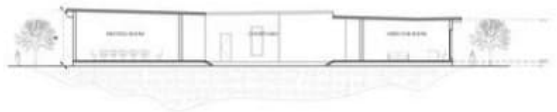
## AREA STATEMENT

CURATOR OFFICE	35 SQM
DIRECTOR OFFICE	35 SQM
MEETING ROOM	50 SQM X 3
RECEPTION	180 SQM
GENERAL STORAGE	70 SQM
TICKET COUNTER	30 SQM
BAGGAGE ROOM	30 SQM
STAFF OFFICE	80 SQM

## EXPLODED VIEW



SECTION AA'



SECTION BB'

