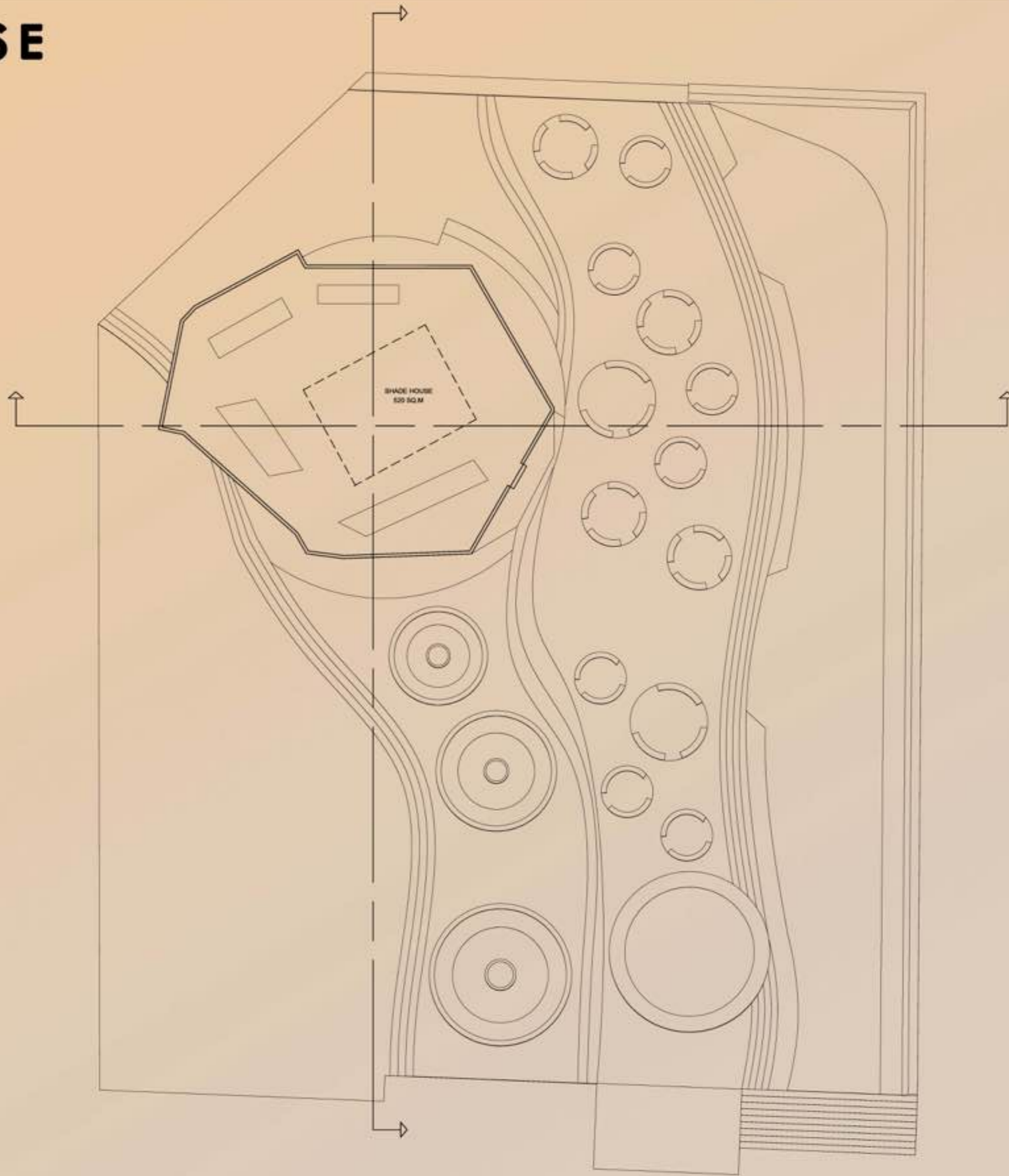


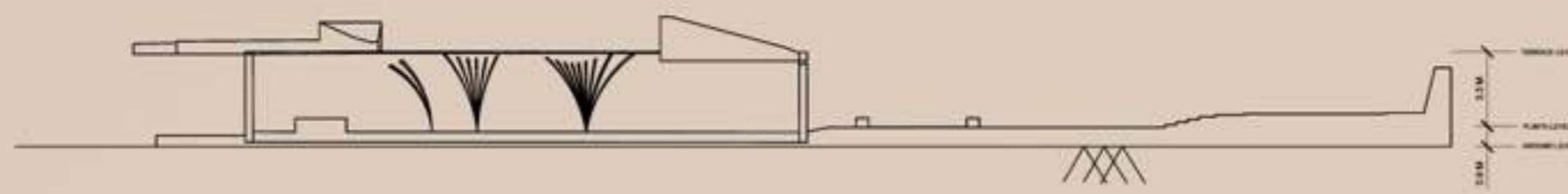
# INTERPRETATION CENTER

## SHADE HOUSE

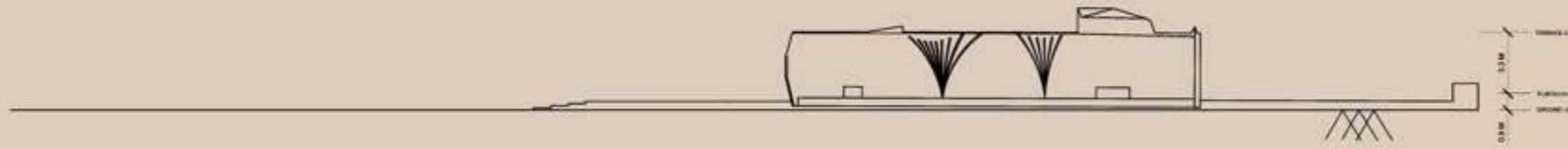


**SCALE 1:200**  
ALL DIMENSIONS ARE IN METER

### FLOOR PLAN



### SECTION AA'

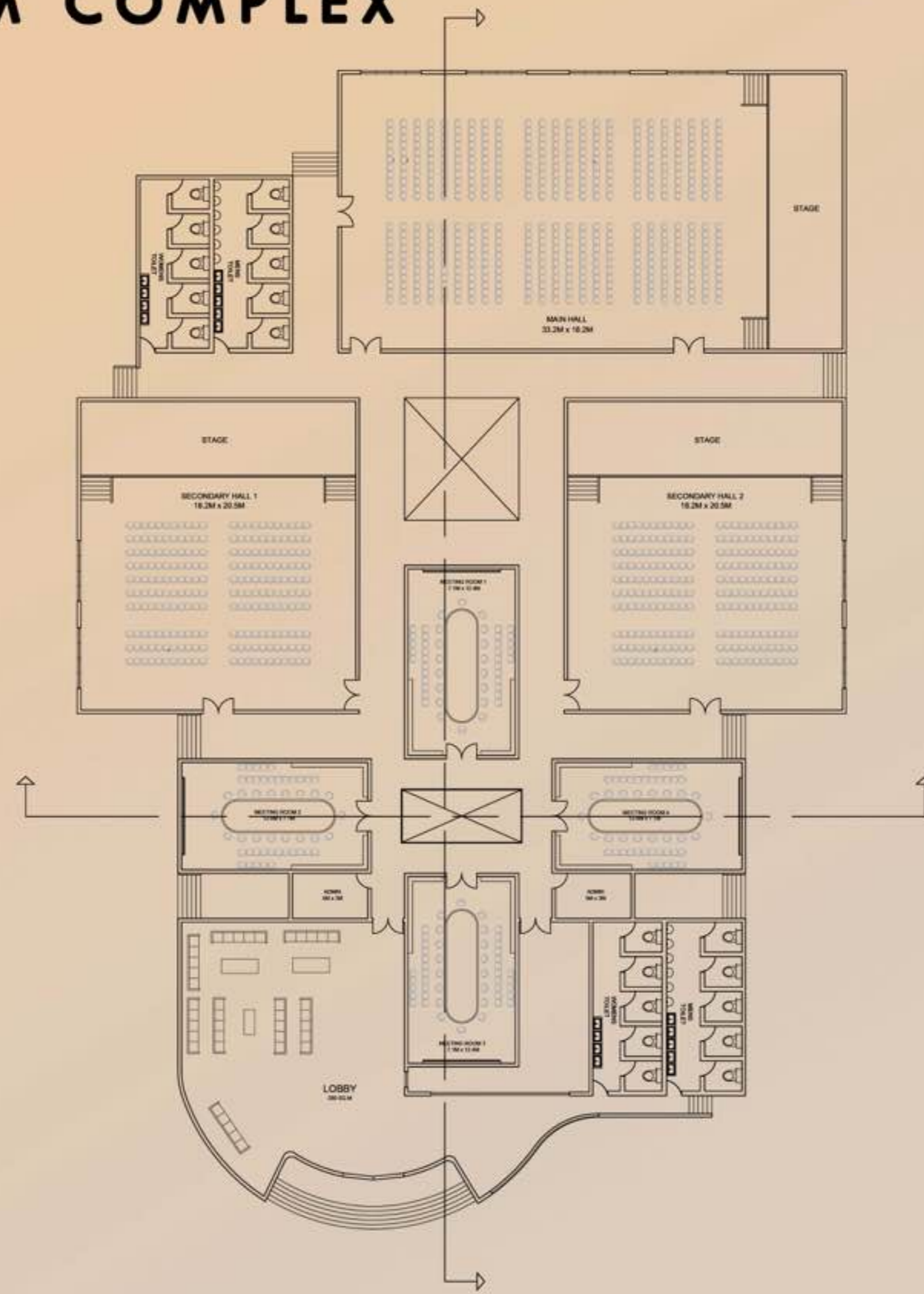


### SECTION BB'



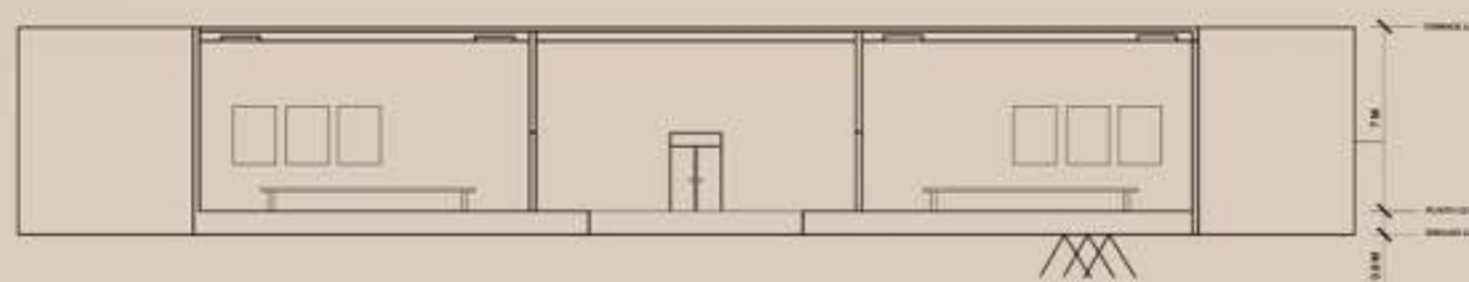
# INTERPRETATION CENTER

## CONFERENCE ROOM COMPLEX

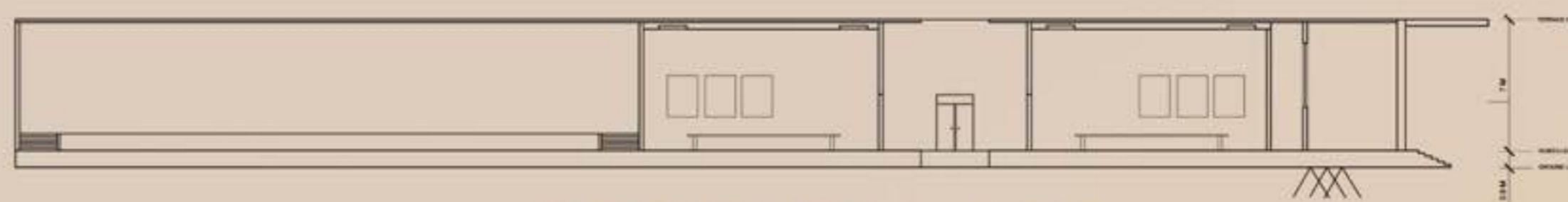


**SCALE 1:200**  
ALL DIMENSIONS ARE IN METER

**FLOOR PLAN**



**SECTION AA'**

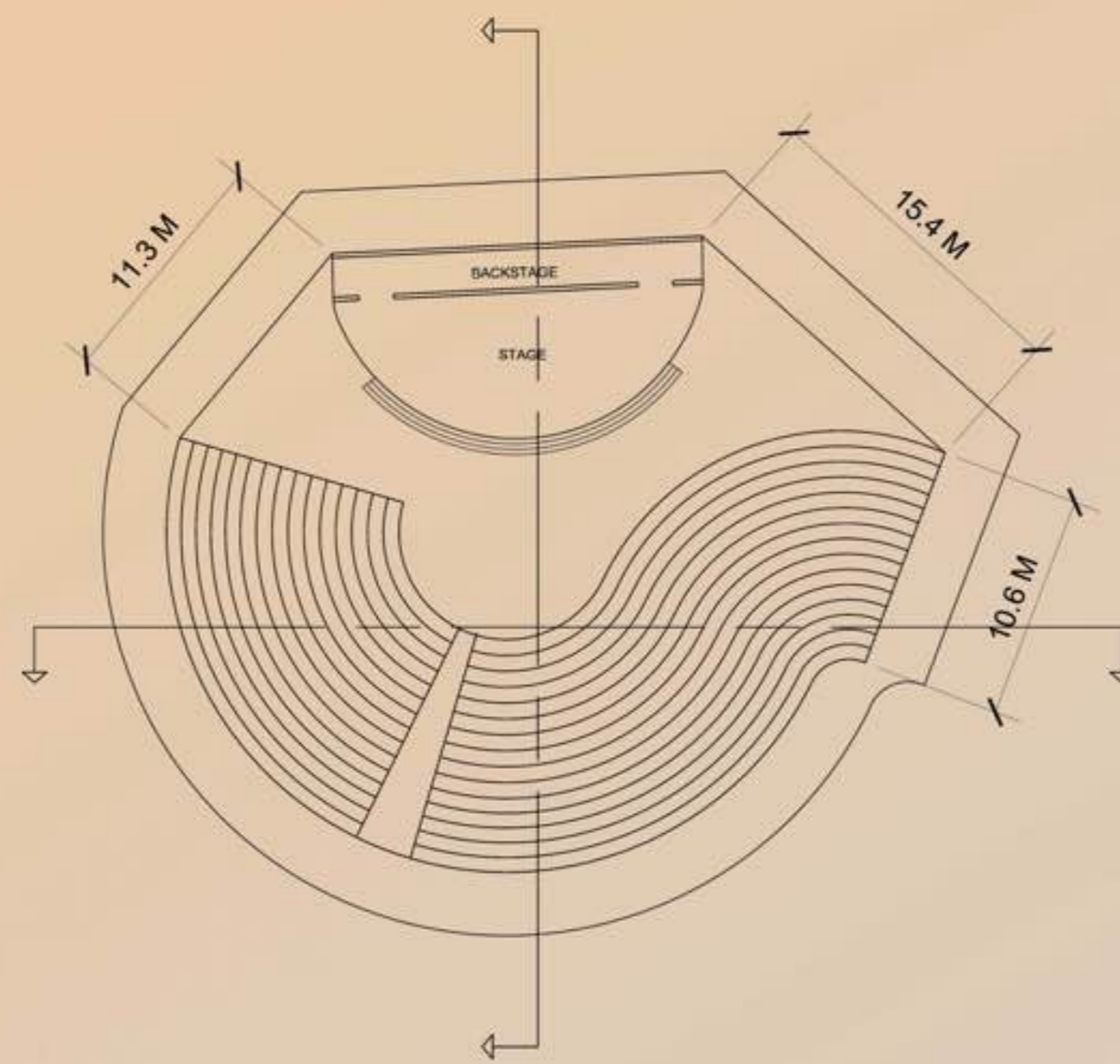


**SECTION BB'**

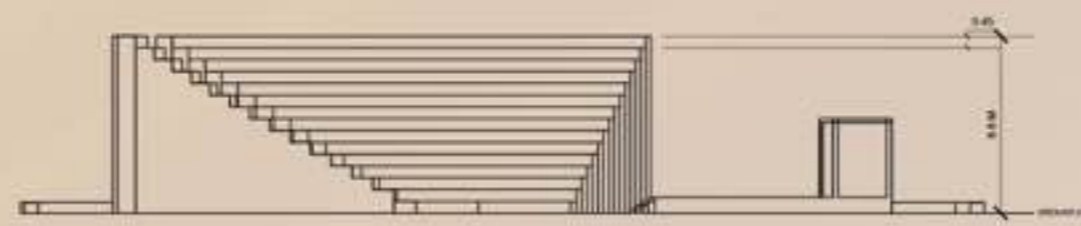


# INTERPRETATION CENTER

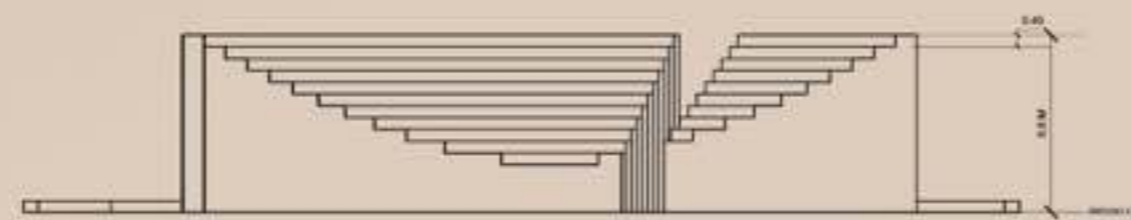
## AMPHITHEATRE



FLOOR PLAN

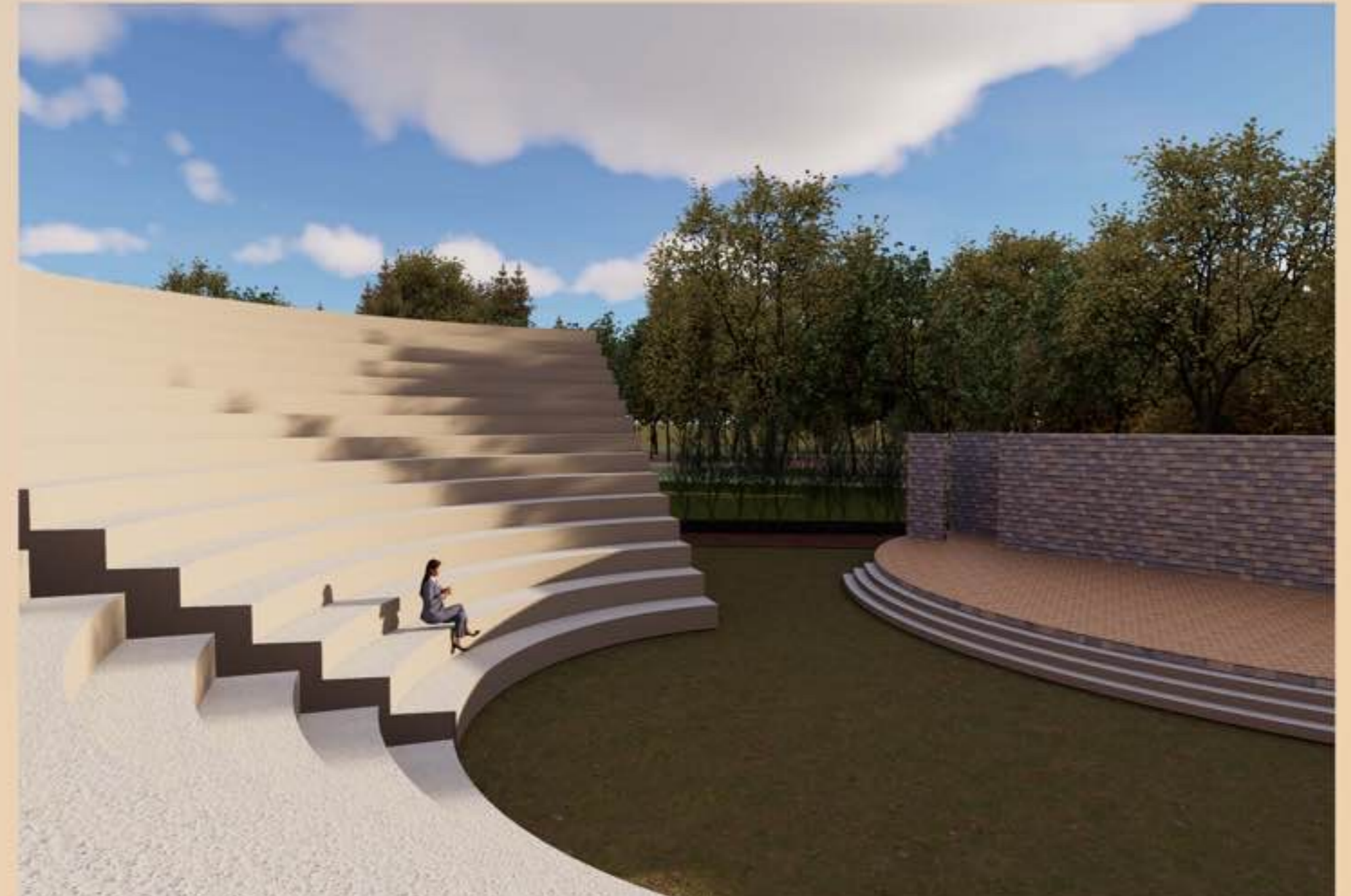
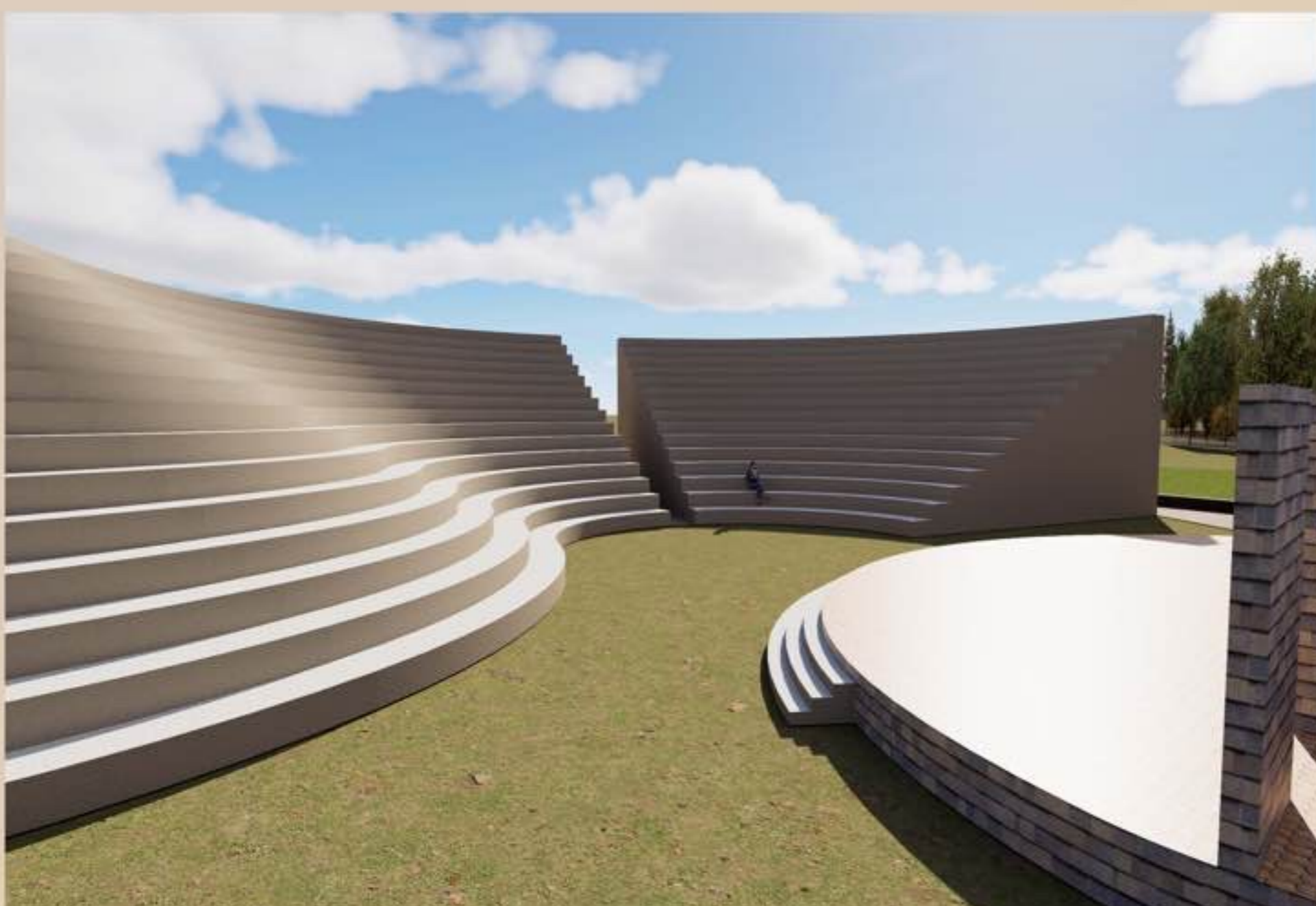


SECTION AA'



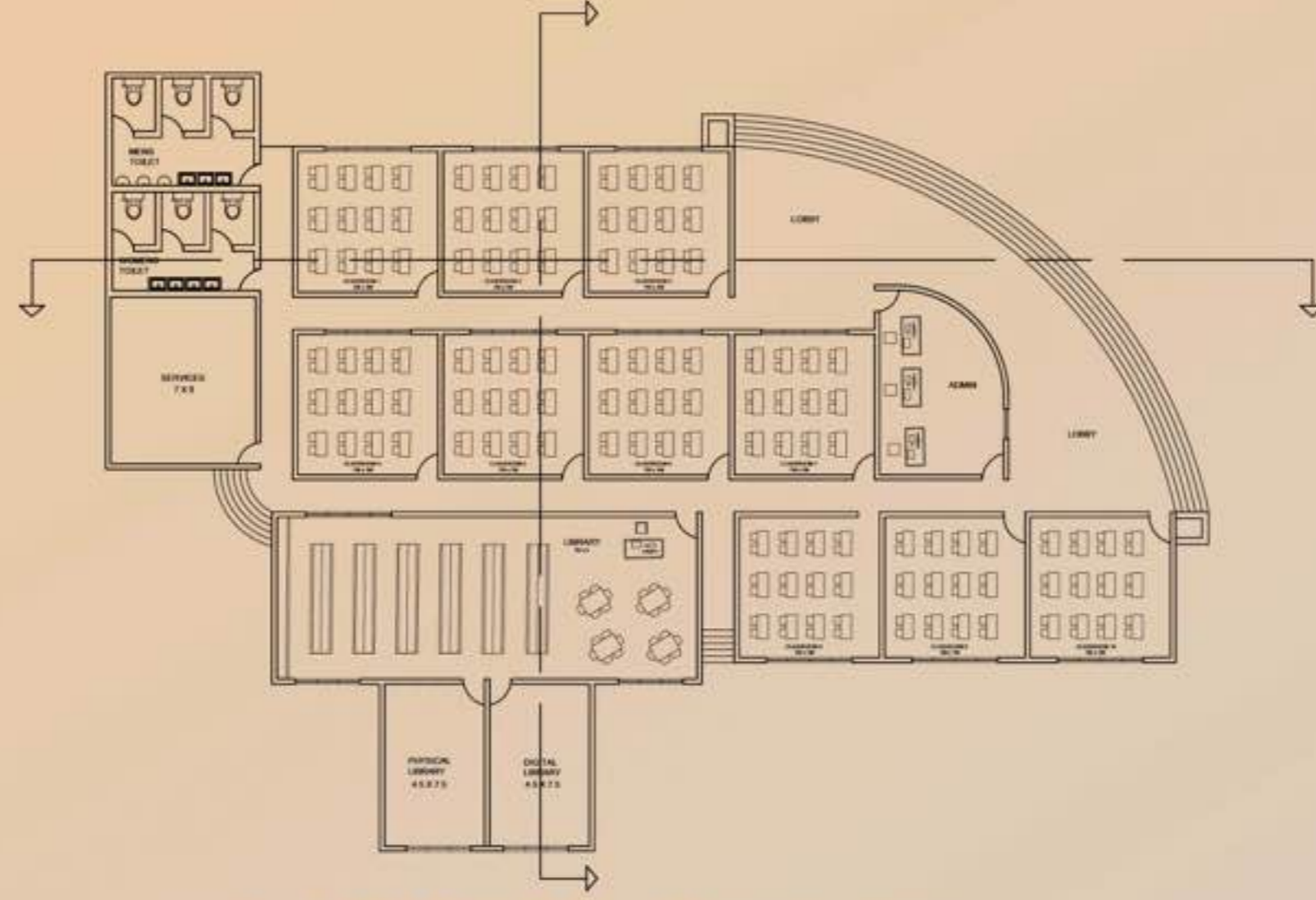
SECTION BB'

SCALE 1:200  
ALL DIMENSIONS ARE IN METER



# INTERPRETATION CENTER

## CLASSROOM COMPLEX



CLASSROOM COMPLEX  
FLOOR PLAN



SECTION AA'



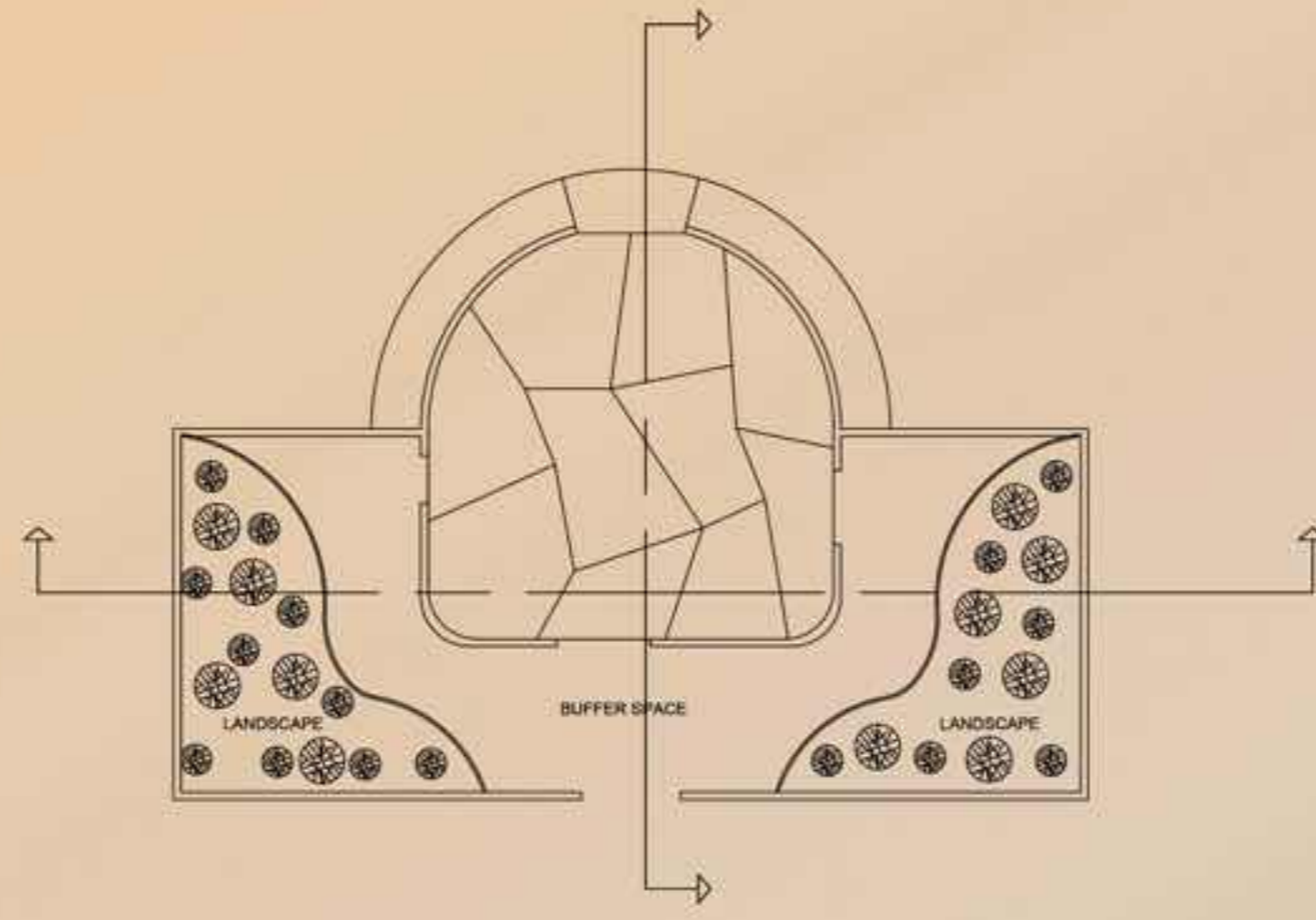
SECTION BB'

**SCALE 1:200**  
ALL DIMENSIONS ARE IN METER

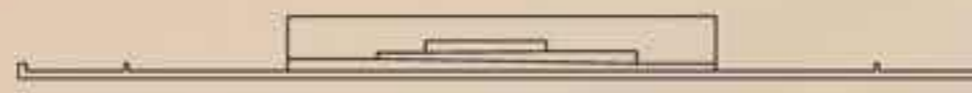


# INTERPRETATION CENTER

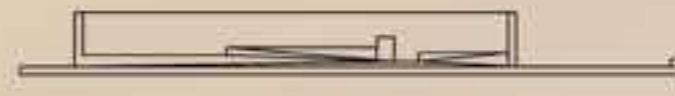
## MEMORY PLAZA



FLOOR PLAN



SECTION AA'



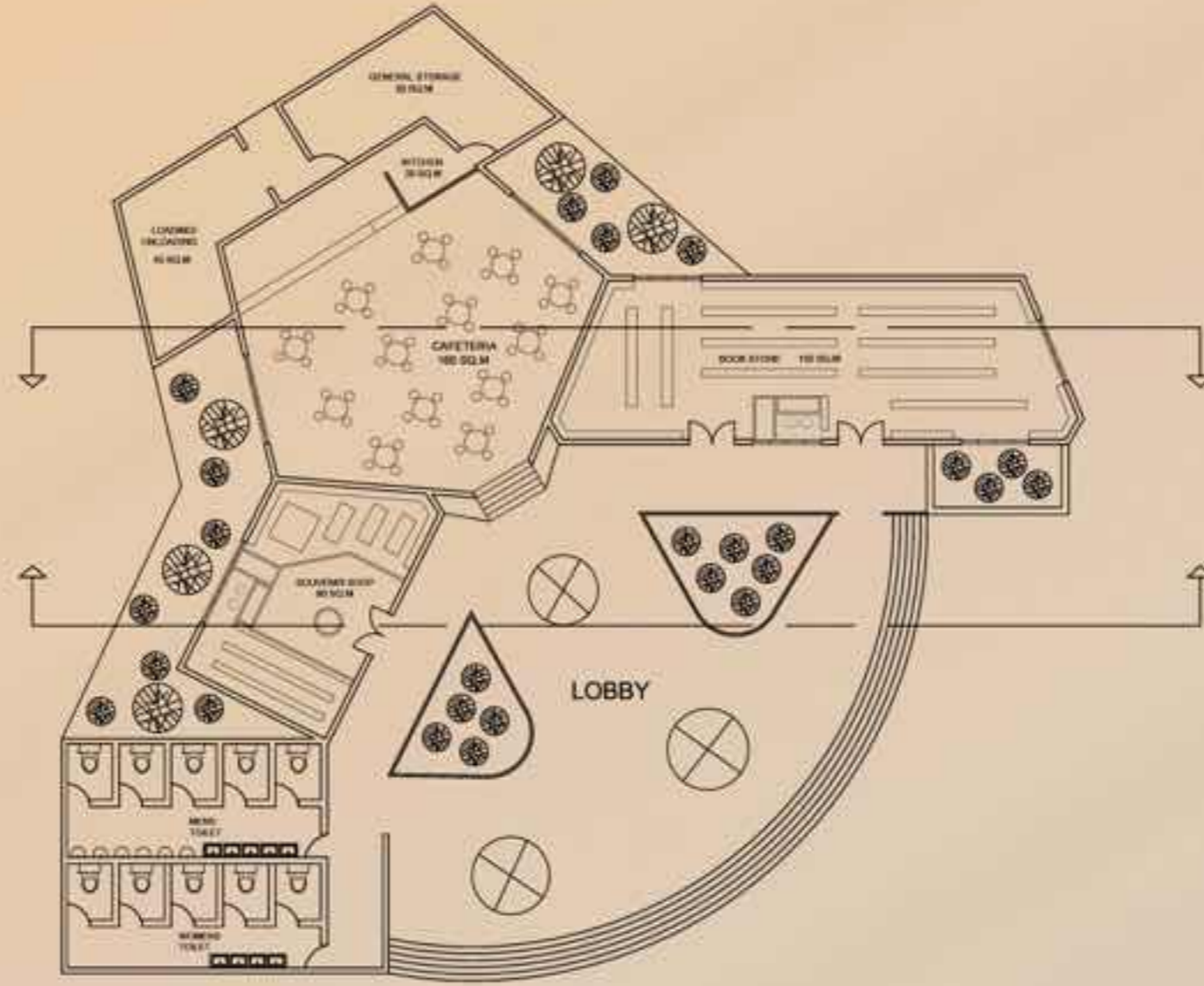
SECTION BB'

SCALE 1:200  
ALL DIMENSIONS ARE IN METER

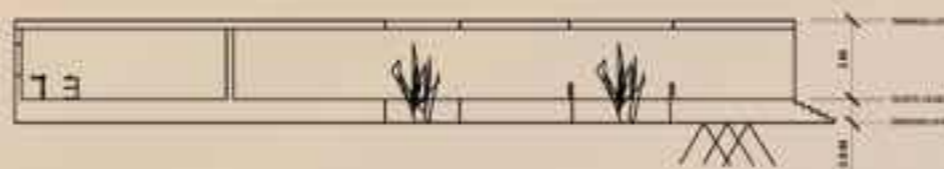


# INTERPRETATION CENTER

## COMMERCIAL PREMISES & SERVICES



FLOOR PLAN



SECTION AA'



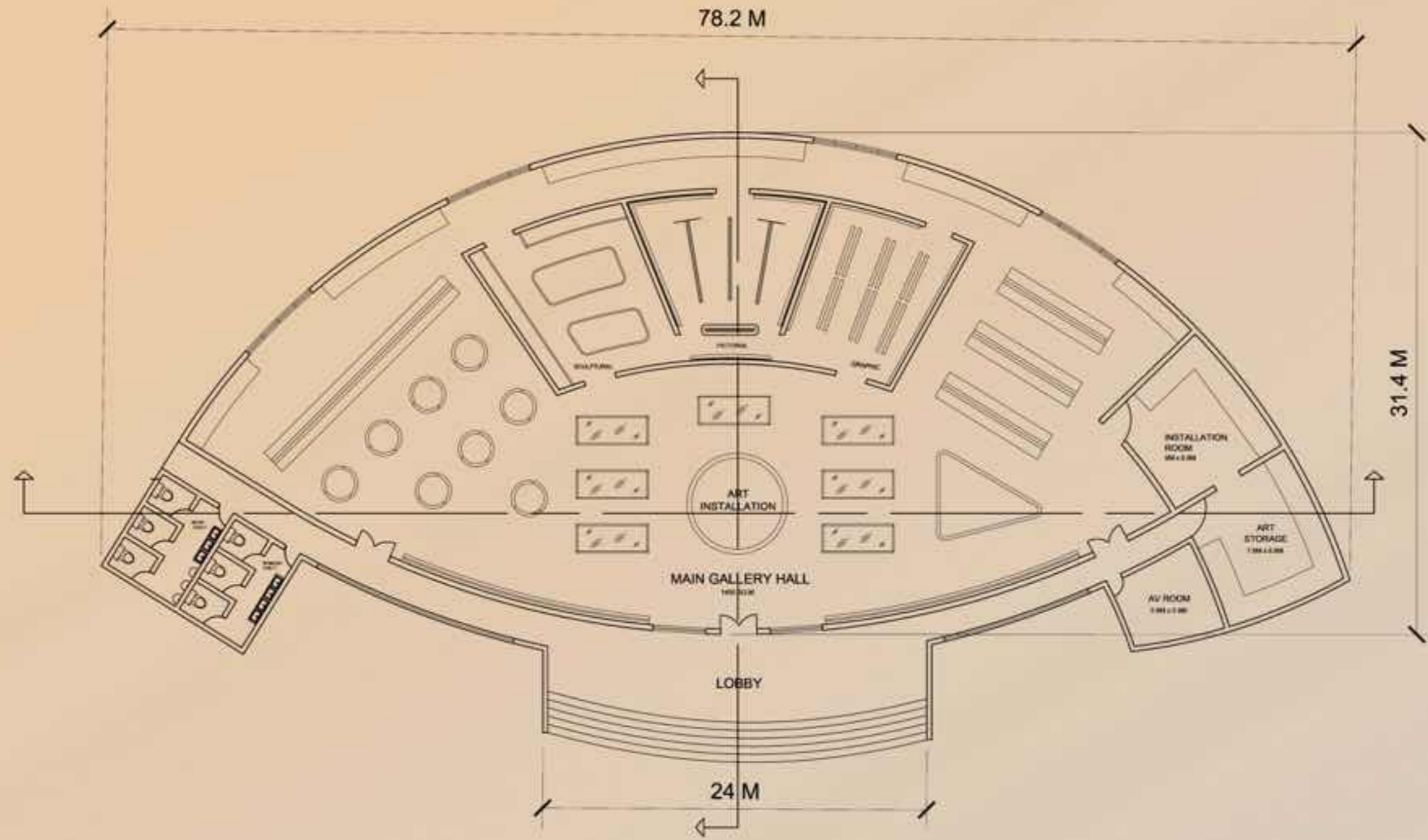
SECTION BB'

SCALE 1:200  
ALL DIMENSIONS ARE IN METER

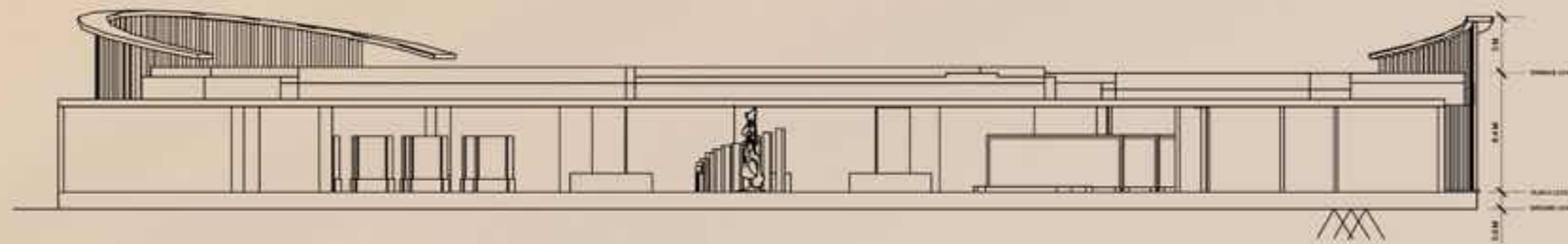


# INTERPRETATION CENTER

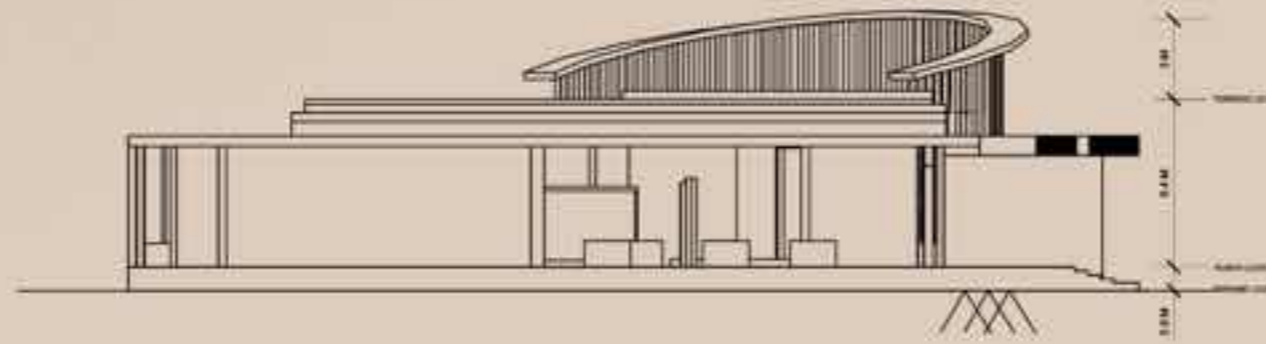
## MEMORY ART GALLERY



MEMORY ART GALLERY  
FLOOR PLAN



SECTION AA'



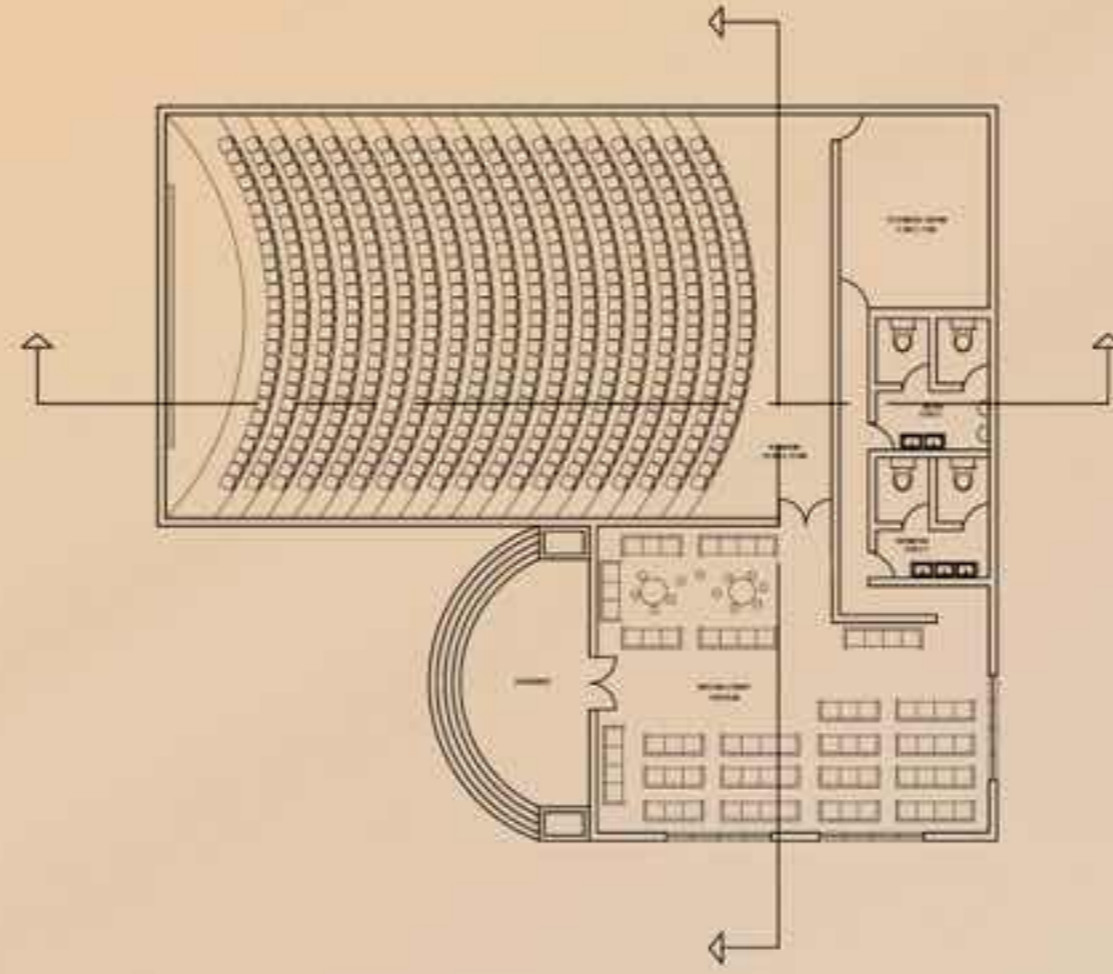
SECTION BB'

SCALE 1:200  
ALL DIMENSIONS ARE IN METER

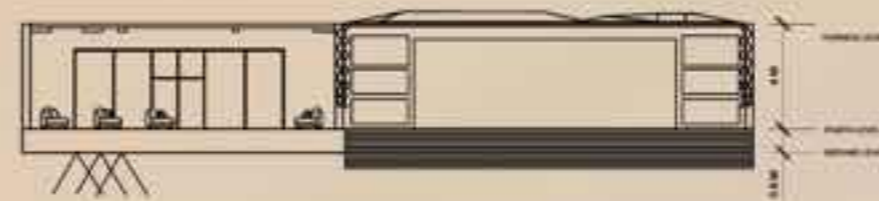


# INTERPRETATION CENTER

## IMMERSIVE AUDIO VISUAL SHOWROOM



FLOOR PLAN



SECTION AA'



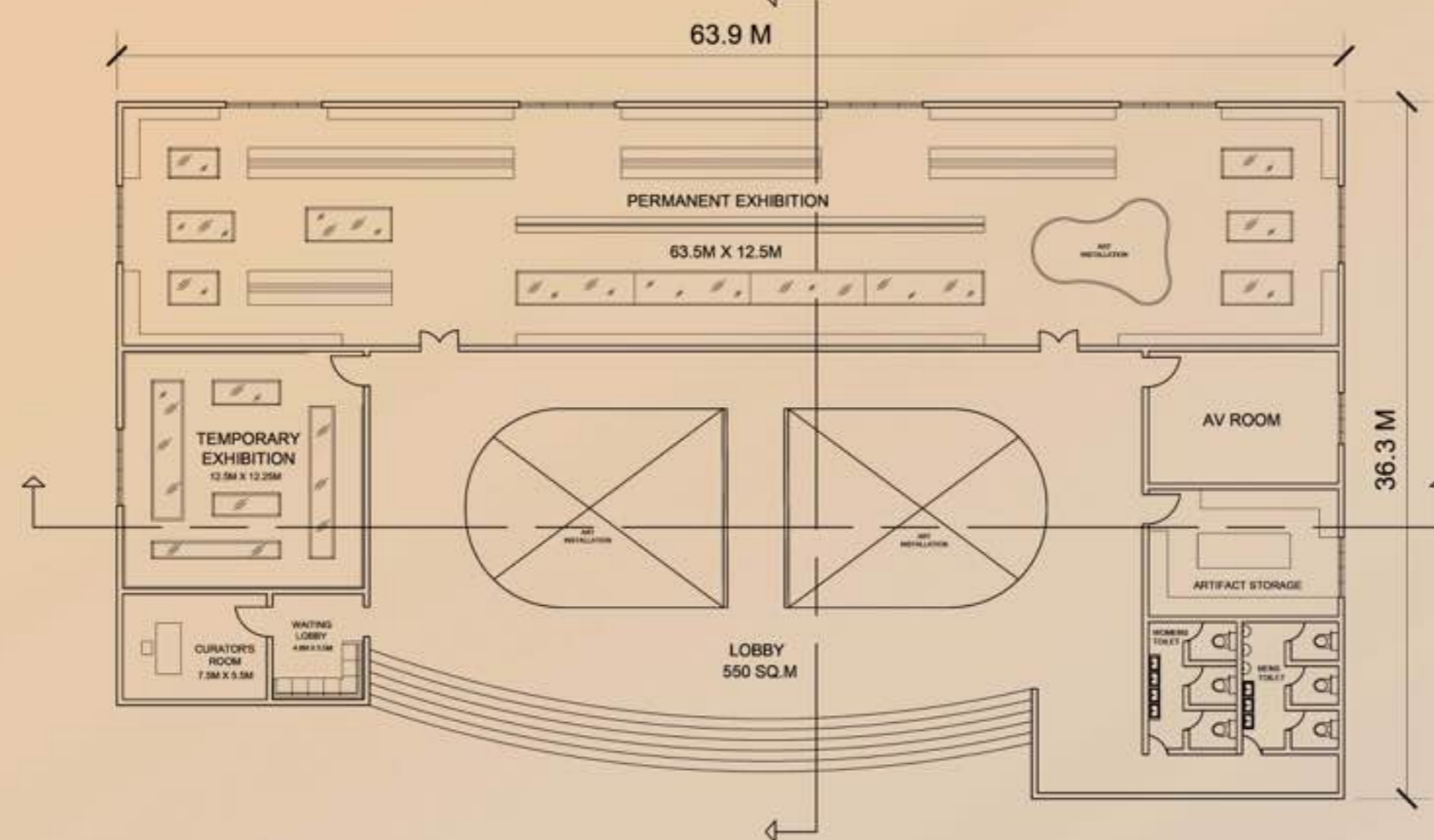
SECTION BB'

SCALE 1:200  
ALL DIMENSIONS ARE IN METER



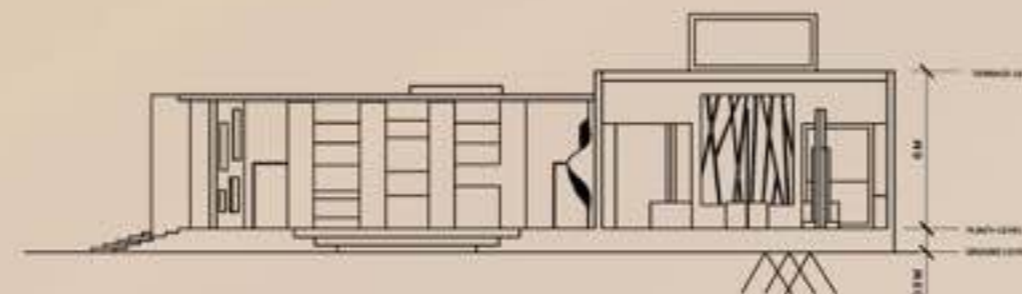
# INTERPRETATION CENTER

## HISTORICAL EXHIBITION PAVILION

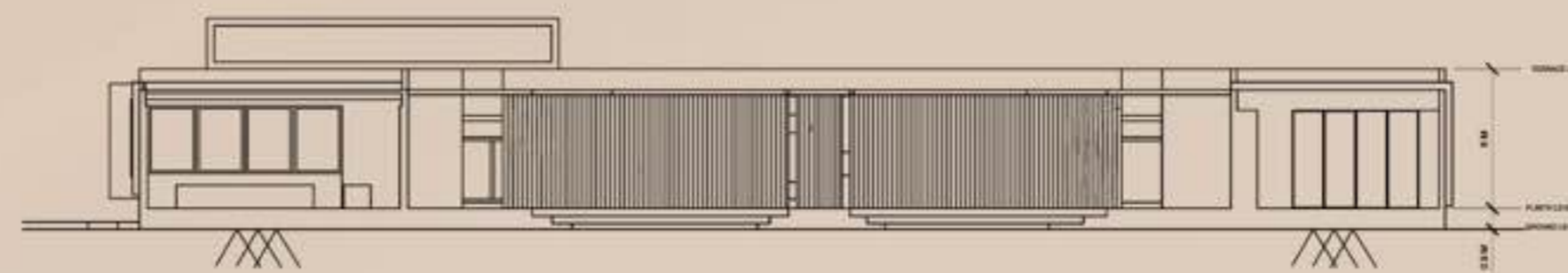


HISTORICAL EXHIBITION PAVILION

FLOOR PLAN



SECTION AA'



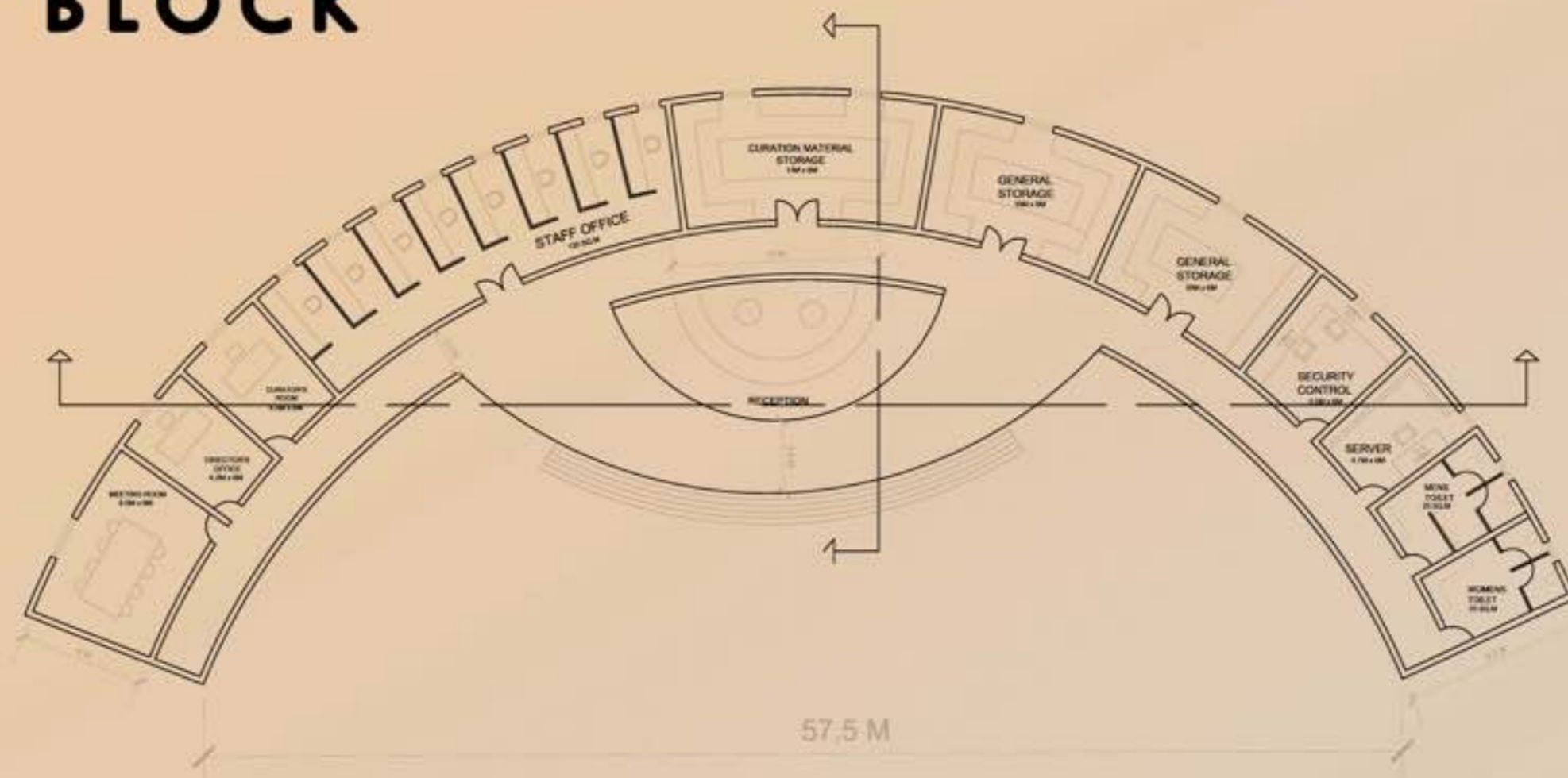
SECTION BB'

**SCALE 1:200**  
ALL DIMENSIONS ARE IN METER



# INTERPRETATION CENTER

## ADMINISTRATION BLOCK

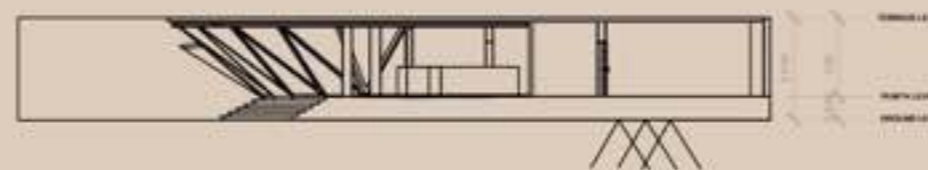


ADMINISTRATION  
FLOOR PLAN

SCALE 1:200  
ALL DIMENSIONS ARE IN METER



SECTION AA'

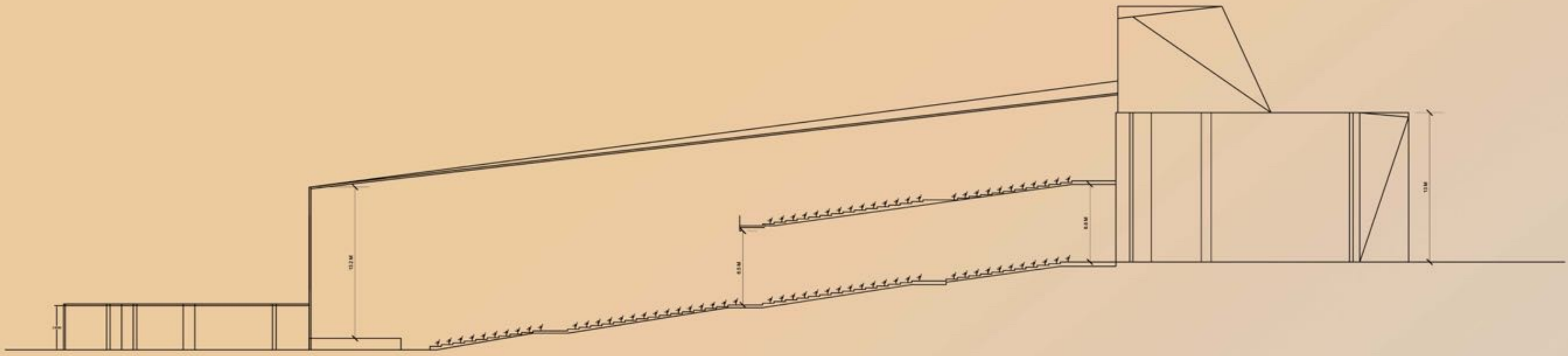


SECTION BB'



# INTERPRETATION CENTER

## CONCERT HALL



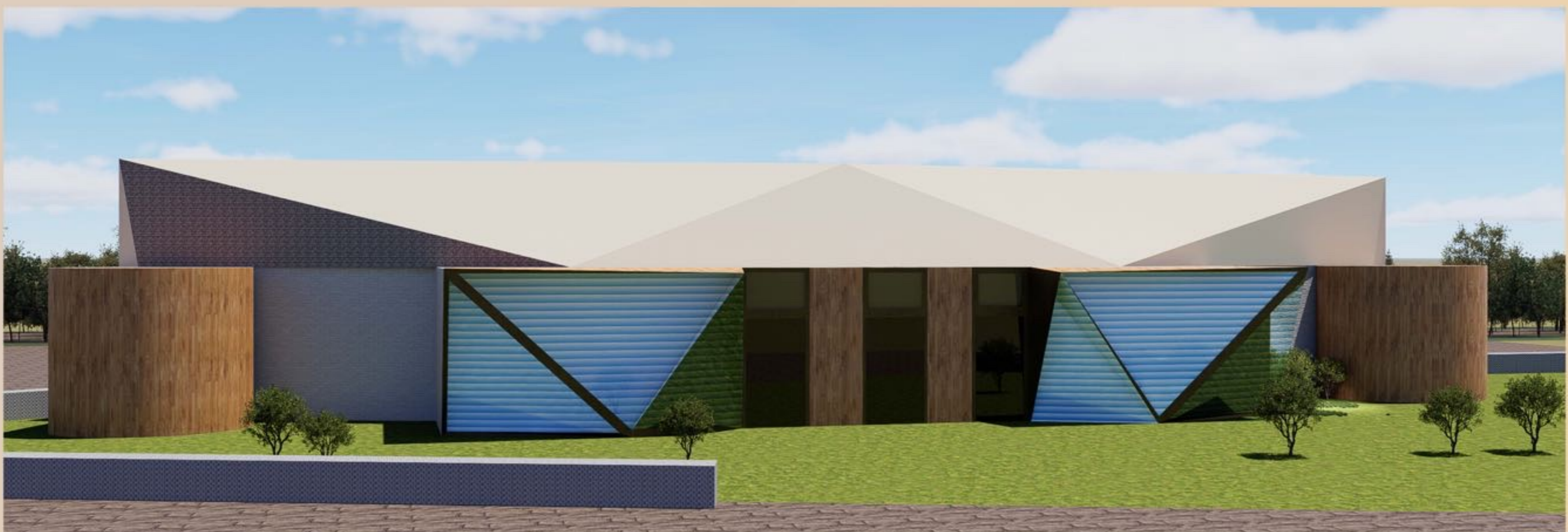
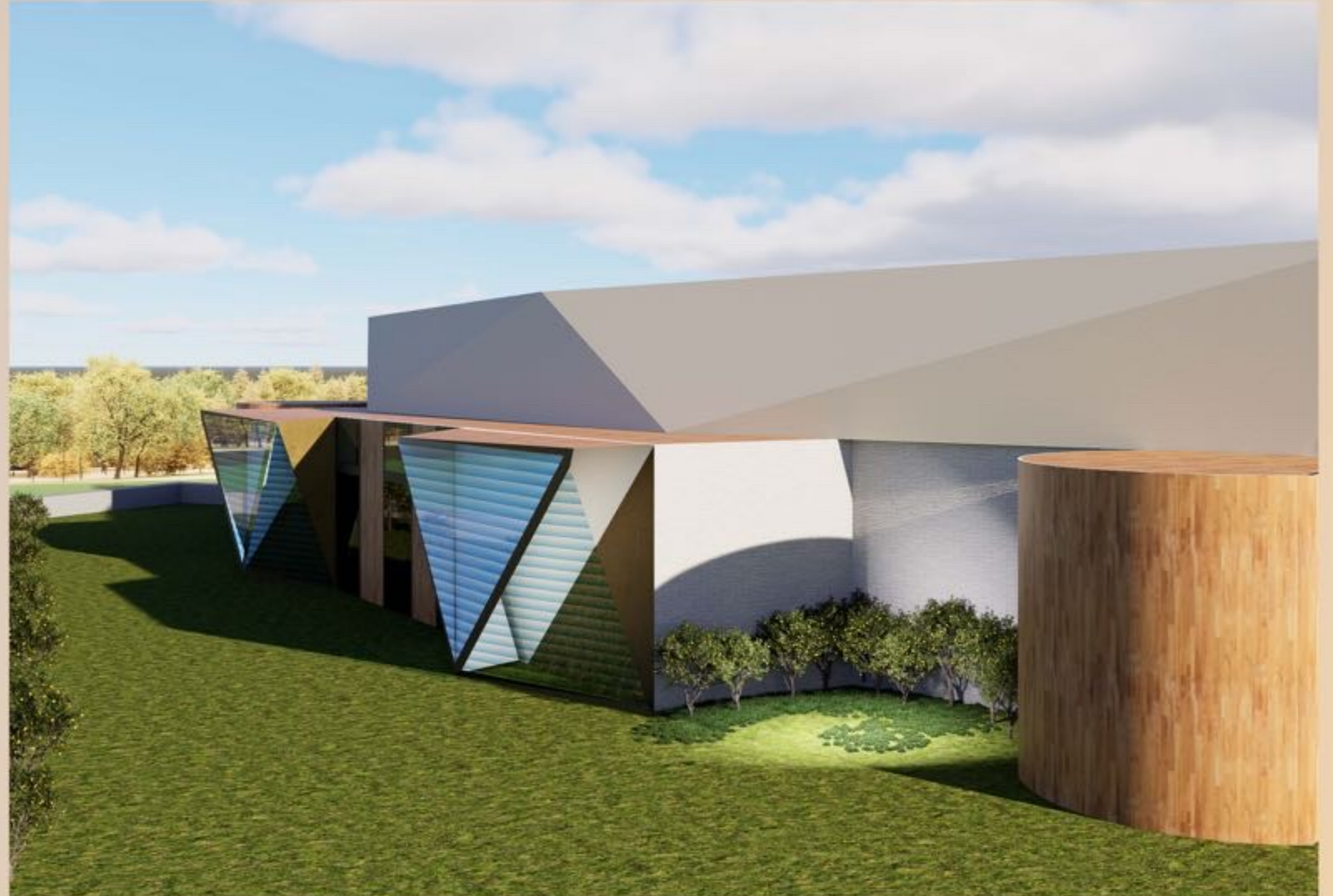
SECTION AA'



SECTION BB'

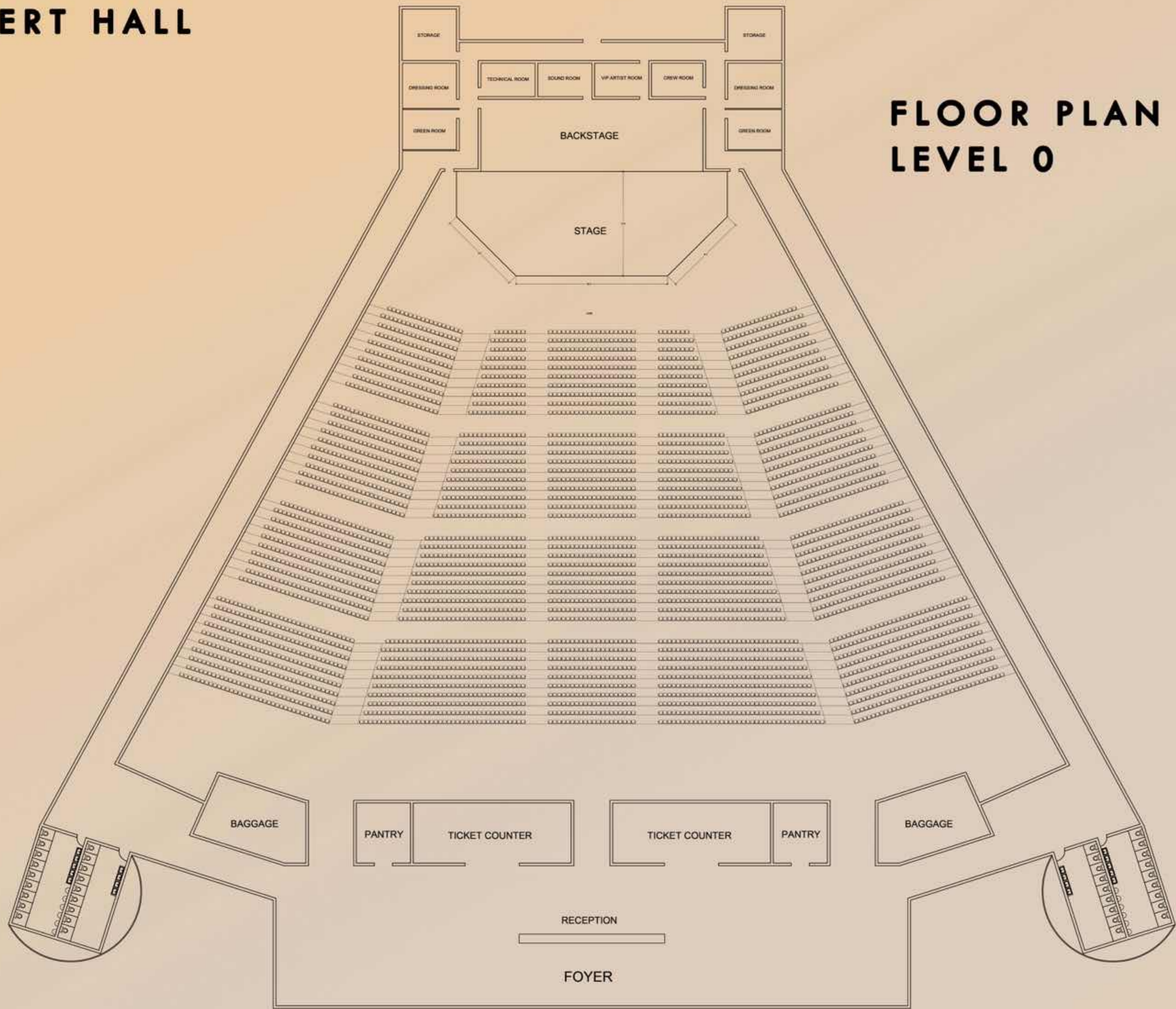
SCALE 1:200  
ALL DIMENSIONS ARE IN METER

### EXTERIOR VIEWS



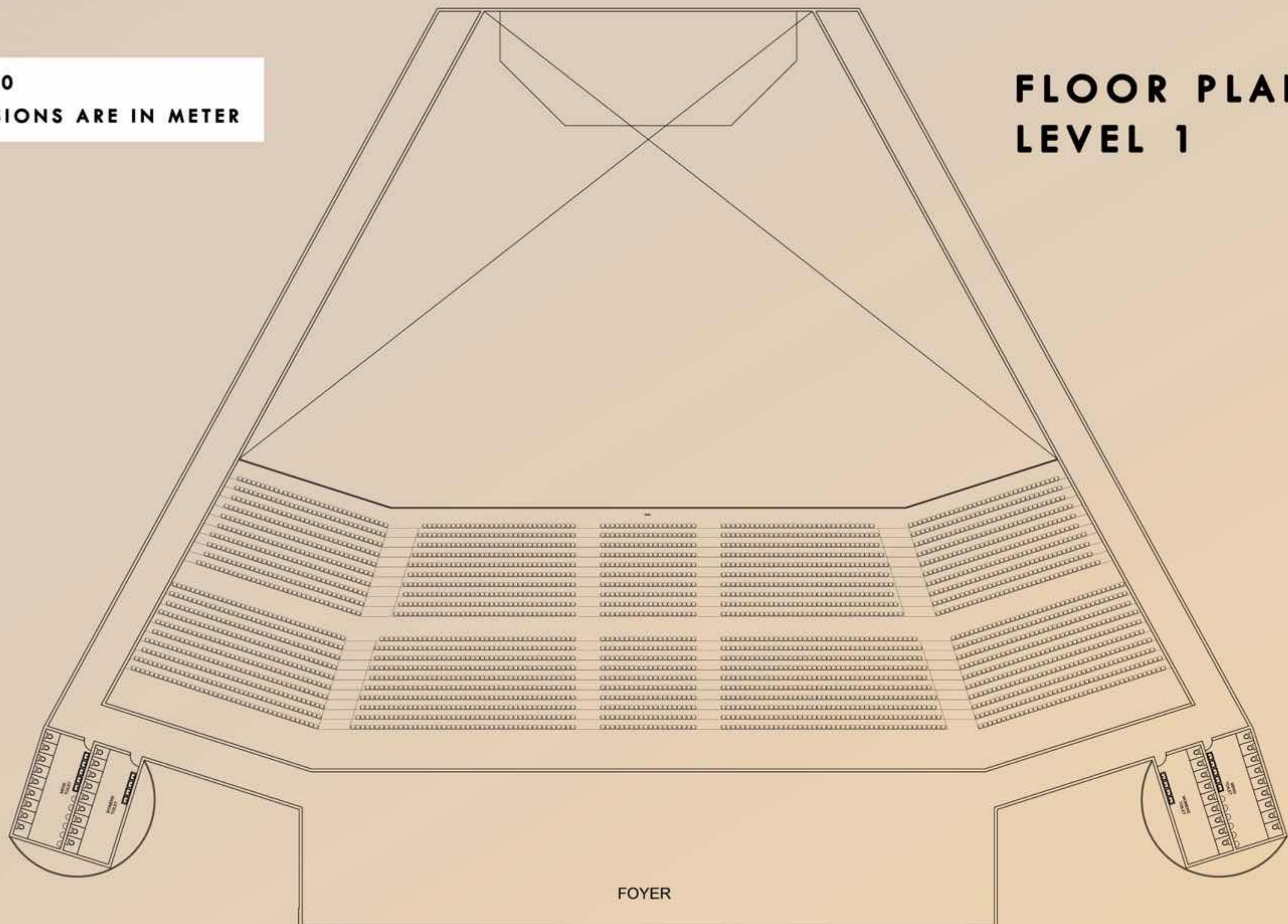
# INTERPRETATION CENTER

## CONCERT HALL



FLOOR PLAN  
LEVEL 0

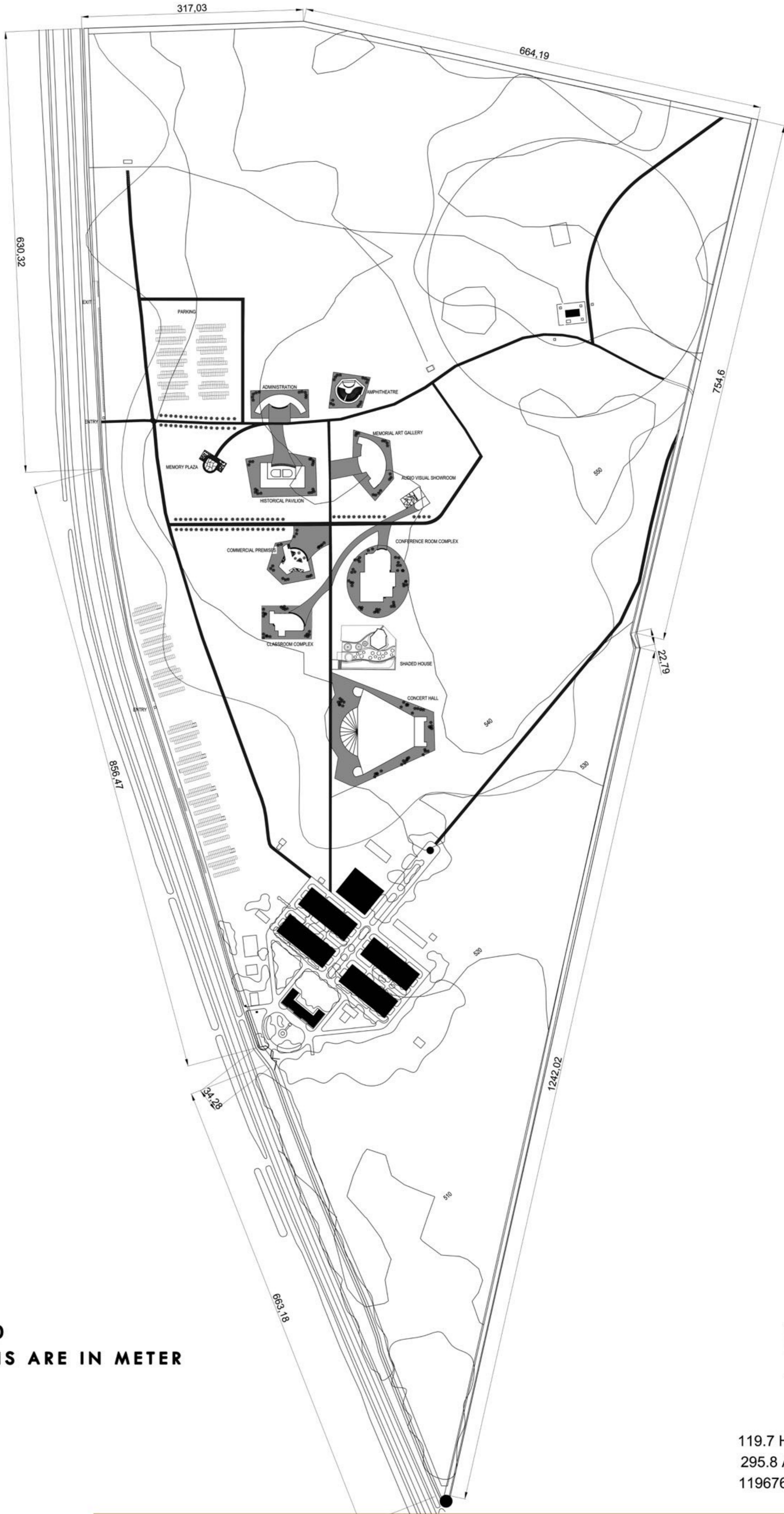
SCALE 1:200  
ALL DIMENSIONS ARE IN METER



FLOOR PLAN  
LEVEL 1

# INTERPRETATION CENTER

## SITE PLAN

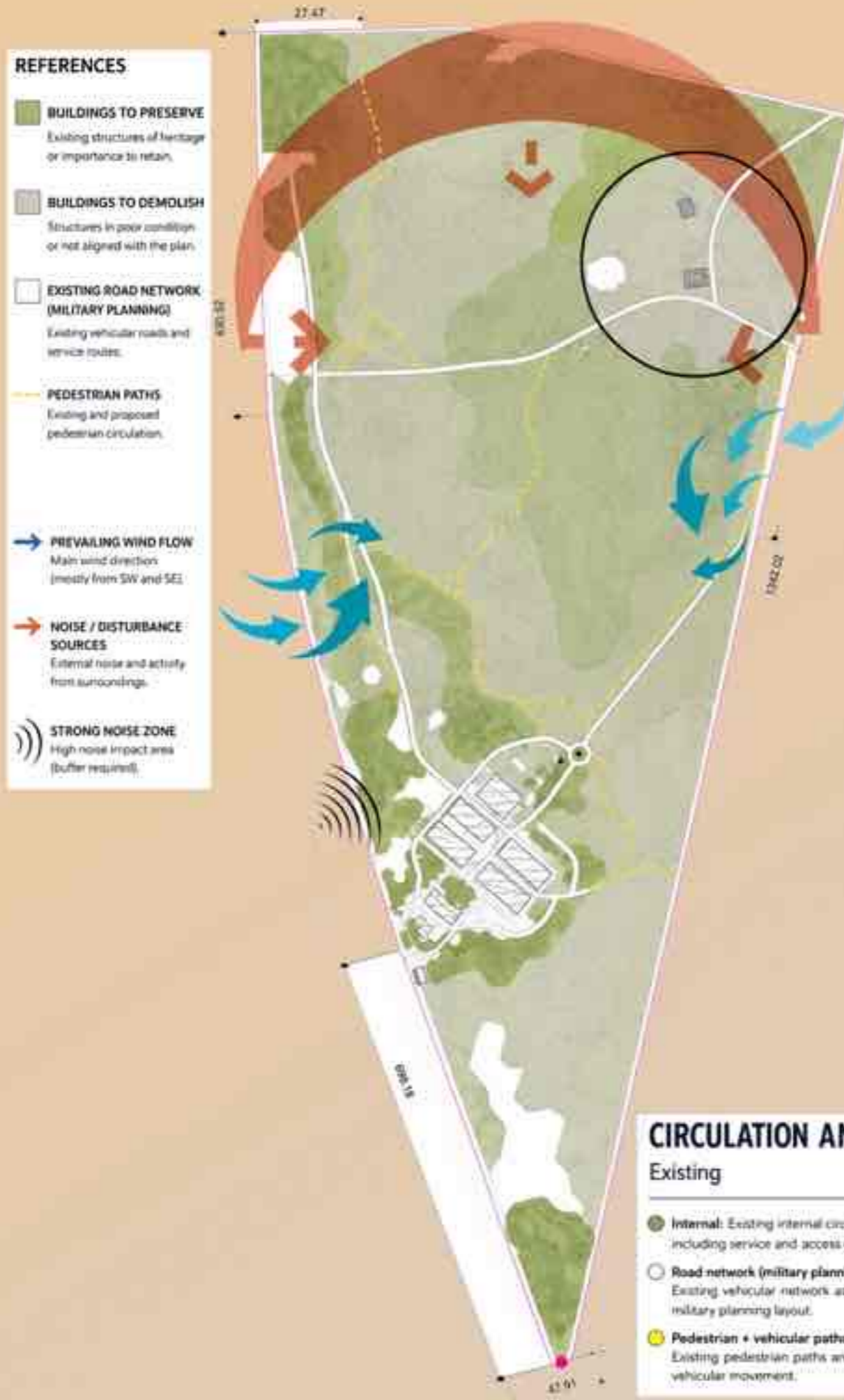


SCALE - 1:2000  
ALL DIMENSIONS ARE IN METER

N  
↑  
119.7 HECTARE  
295.8 ACRE  
1196768.7 SQ.M

# INTERPRETATION CENTER

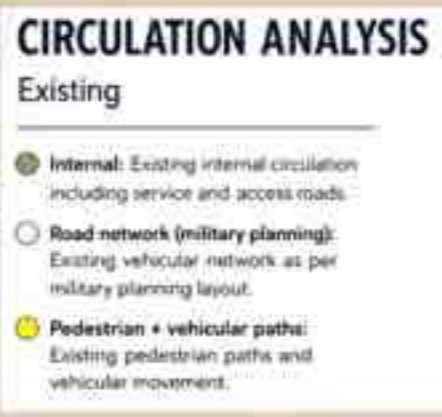
## SITE ANALYSIS / CONCEPT



**LOCATION :** San Miguel De Tucuman  
**COUNTRY :** Argentina  
**SITE AREA :** 350 Hectares  
**PREVIOUS USE :** Military Arsenal (Army Base)  
**Temperature**  
 • Summers: Hot (approx. 30–40°C)  
 • Winters: Mild (approx. 10–20°C)  
**Climate Type**  
 Subtropical Humid

**URBAN CONTEXT ANALYSIS:**  
**Surroundings**  
 • Located in northern metropolitan region  
 • City has:  
 • Rapid growth  
 • Unplanned urban sprawl  
**Urban Issues**  
 • Site is acting as a:  
 • Barrier / dead zone  
 • Disconnected land parcel

**HISTORICAL & CULTURAL ANALYSIS:**  
**Past Use**  
 • 1976–1978:  
 • Clandestine detention center  
 • Torture & execution happened  
**Key Elements**  
 • Galpón 9 (Main detention building)  
 • Mass graves (identified + unidentified)  
 • Barracks buildings  
**Restrictions**  
 • 200m radius zone = Protected / sensitive area  
**Concept line:**  
 "A site of memory, trauma, and remembrance."



### S – STRENGTHS

- Wide climatic diversity encourages multiple design approaches
- Fertile terrain with abundant natural resources
- Buenos Aires acts as a major metropolitan center
- Strong cultural heritage and distinctive architectural character

### W – WEAKNESSES

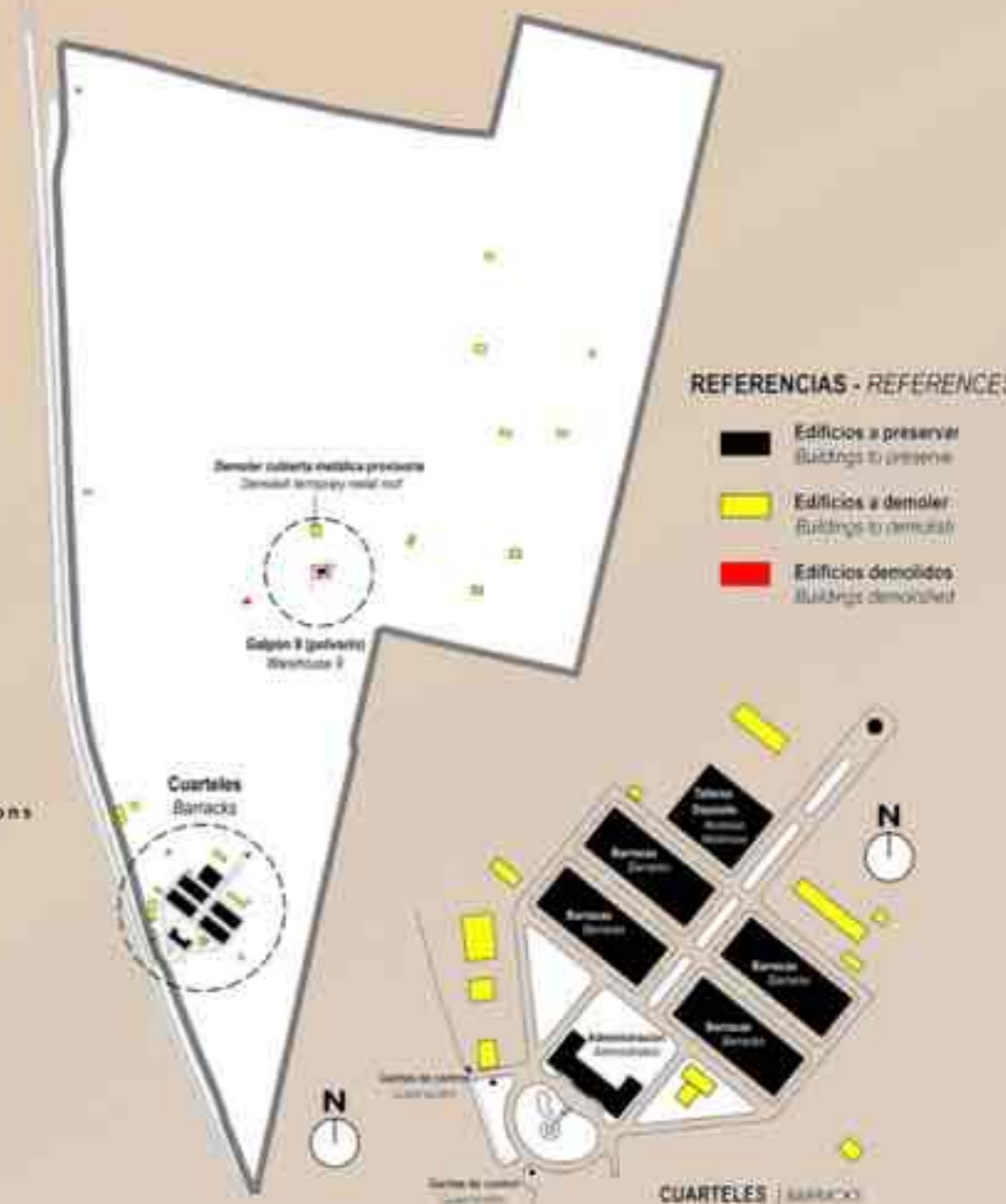
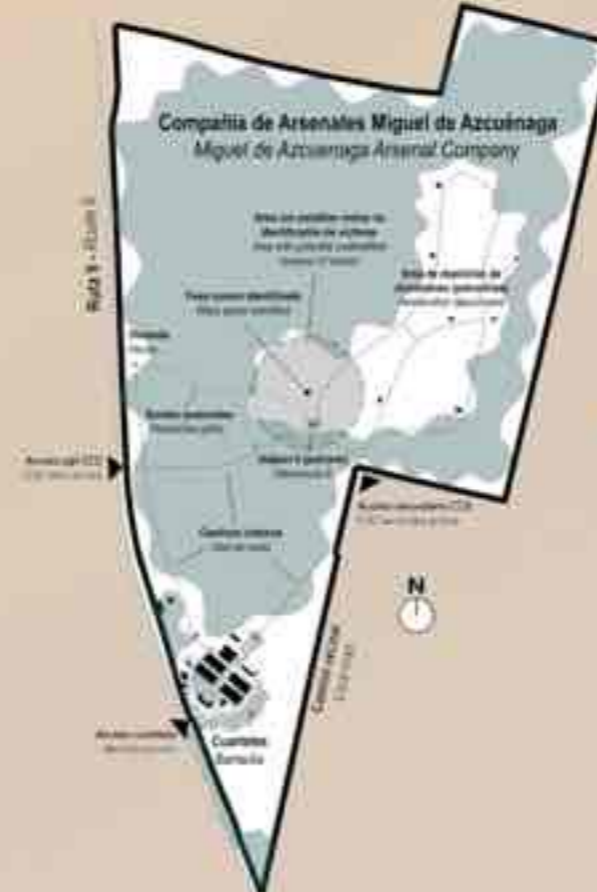
- Extreme climate differences make design uniformity difficult
- Western regions are vulnerable to earthquakes
- Northern-eastern areas are highly prone to flooding
- Rural regions lack consistent infrastructure development

### O – OPPORTUNITIES

- Strong scope for renewable energy sources (solar + wind)
- Potential for eco-sensitive and landscape-based architecture
- Expanding cities create chances for urban transformation
- Tourism growth supports architectural and infrastructure development

### T – THREATS

- Climate change increasing the frequency of floods and droughts
- High wind conditions affecting structural performance in southern regions
- Seismic risks in the Andean belt
- Rapid urban expansion causing environmental damage



## CONCEPT

### SPATIAL EXPERIENCE

The project is experienced as a sequence of emotional transitions:

- Entry – Introduction and orientation
- Transition Spaces – Increasing spatial complexity and distortion
- Core Zones – Intense, enclosed, and introspective environments
- Open Spaces – Release, reflection, and clarity

This progression reflects a journey through the subconscious, moving from awareness to deeper understanding.



### PROJECT DESCRIPTION

The project proposes an Interpretation Center as a spatial exploration of memory, perception, and emotional experience. Rather than functioning as a conventional museum, the design transforms architecture into an experiential medium where visitors engage with history through movement, space, and light.

The project is conceived as a psychological and spatial journey, where built forms and landscapes work together to reveal different layers of memory. Each space contributes to an evolving narrative that moves from awareness to introspection and finally towards clarity.

### MEMORY PLAZA

The Memory Plaza acts as a central experiential space, designed as a layered composition of rising and descending planes.

- Each plane represents a fragment of memory
- Changes in level create physical and emotional engagement
- Movement across levels symbolizes the act of uncovering hidden memories

Linear light elements inserted between planes represent traces of memory emerging from within.

The plaza becomes a space where visitors actively participate in the process of reflection rather than passively observing.



### FORM DEVELOPMENT

The architectural form is generated through the interaction of two contrasting geometries:

- Rectilinear forms represent order, structure, and the conscious mind
- Curvilinear forms represent emotion, fluidity, and the subconscious

The intersection of these geometries creates spatial tension, expressing the relationship between logic and emotion, past and present.

The built form is intentionally fragmented into multiple volumes, symbolizing the broken and layered nature of memory. This fragmentation allows visitors to experience the project as a sequence of discoveries rather than a single unified object.



### LIGHT AND ATMOSPHERE

Light is used as a primary design element to influence perception and emotion:

- Controlled and narrow light openings create focus and tension
- Enclosed darker spaces evoke introspection
- Open and diffused light creates a sense of release and clarity

The gradual transition from darker to lighter spaces forms an emotional gradient throughout the project.



### PROJECT IDEA

"Subconscious Landscapes – Architecture of Buried Memory"

The project is based on the idea that memory is not linear, but fragmented, layered, and often hidden within the subconscious.

Instead of presenting history in a chronological sequence, the design creates a spatial experience that reflects how memory is perceived – distorted, incomplete, and emotionally charged.

Visitors do not simply observe history; they navigate through it, uncovering meanings through movement and spatial transitions.



### SPATIAL STRATEGY

The design avoids a rigid linear path and instead creates a guided yet exploratory movement system.

- Primary paths provide orientation and direction
- Secondary paths allow exploration and pause

Spaces are designed with subtle shifts in alignment, scale, and enclosure to create a sense of spatial distortion encouraging deeper engagement.

### PROJECT CONCLUSION

The Interpretation Center redefines how memory and history are experienced through architecture.

By combining fragmented forms, shifting levels, and controlled light, the project creates a spatial narrative that engages both the mind and the senses.

It is not just a place of information, but a space of exploration, introspection, and understanding – where visitors do not simply learn history, but experience it.



### LANDSCAPE INTEGRATION

The landscape is treated as an extension of the architectural experience:

- Organic pathways guide movement naturally
- Vegetation creates moments of pause and silence
- Built forms emerge from and merge with the terrain

The integration of built and unbuilt spaces enhances the overall experiential quality of the project.