

SITE SECTION



SITE LOCATION



SITE CONTEXT

LOCATION: SAN MIGUEL DE TUCUMAN, ARGENTINA
 LATITUDE: 26.75° SOUTH (SOUTHERN HEMISPHERE - SUBTROPICAL ZONE)
 LONGITUDE: 65.20° WEST
 TERRAIN: MOSTLY VALLEY + FOOTHILLS OF ANDES
 CLIMATE TYPE: SUBTROPICAL (HUMID-SEMI HUMID)
 HOT SUMMERS, MILD WINTERS

TOPOGRAPHY

LIKELY GENTLY SLOPES TOWARDS PLAINS
 SITE HAS EXISTING CONTOURS WITHIN
 VIEWS: WEST SIDE ANDES HILLS (STRONG VISUAL AXIS)
 VEGETATION: SEMI DENSE GREENERY

VEGETATION USED FOR CONCEPT

OCOTEA PORPHYRIA
 EVERGREEN - SYMBOLIZES CONSTANT MEMORY, ENDURANCE, PERMANENCE, AND UNINTERRUPTED MEMORY.

NO FLASHY FLOWERING FLOWERING:
 VERY SUBTLE APPEARANCE, KEEPS FOCUS ON SPACE + EXPERIENCE NOT DECORATION.

STRONG SPATIAL PRESENCE
 TALL, STRAIGHT TRUNK
 DENSE, DEEP GREEN CANOPY - CREATES A QUIET, ENCLOSED ATMOSPHERE

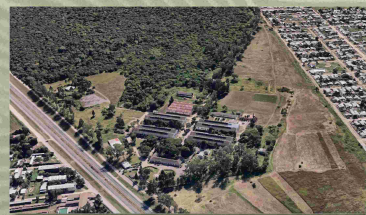
EMOTIONAL QUALITY
 FEELS SERIOUS, GROUNDED, AND TIMELESS PERFECT FOR THEMES LIKE:
 > LOSS
 > HISTORY
 > SILENCE



DIAMETER - 10M - 15M
 HEIGHT - 10M - 25M

CLIMATE ANALYSIS

SUMMER TEMPERATURE : 30 - 40 DEGREE CELSIUS (HOT)
 WINTER TEMPERATURE : 10 - 20 DEGREE CELSIUS (MILD)
 RAINFALL : MOSTLY IN SUMMER
 HUMIDITY : MEDIUM - HIGH



SITE HISTORY

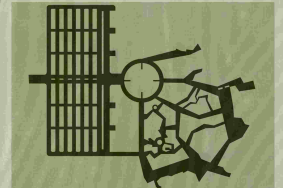
THE ARSENAL MEMORY PARK IN SAN MIGUEL DE TUCUMAN WAS ORIGINALLY PART OF A MILITARY ARSENAL THAT BECAME A MAJOR CLANDESTINE DETENTION, TORTURE, AND EXTERMINATION CENTRE DURING ARGENTINA'S DICTATORSHIP (1976-1978). HUNDREDS OF PEOPLE WERE ILLEGALLY HELD AND DISAPPEARED HERE AS PART OF STATE REPRESSION. TODAY, THE SITE IS PRESERVED AS A MEMORY PARK TO HONOUR VICTIMS AND PROMOTE AWARENESS, REMEMBRANCE, AND JUSTICE



SITE VIEWS



SITE CIRCULATION

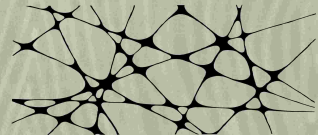


LANDSCAPE

THE AMPHITHEATRE LANDSCAPE IS SHAPED AS IRREGULAR FRAGMENTED TERRACES, SYMBOLIZING BROKEN MEMORIES AND PIECES OF HISTORY THAT TOGETHER RECONSTRUCT THE COLLECTIVE MEMORY OF THE SITE.

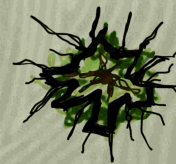
FRAGMENTS OF MEMORY

ARCHITECTURE COMPOSED OF SCATTERED VOLUMES LIKE BROKEN MEMORIES.
 MULTIPLE SMALL PAVILIONS CONNECTED BY LANDSCAPE PATHS.
 EACH PAVILION REPRESENTS A THEME: DICTATORSHIP, RESISTANCE, TESTIMONY, JUSTICE



INSTEAD OF A CLEAR WINDOW, THE JAGGED EDGES DENY A COMPLETE VIEW, SYMBOLIZING HOW TRUTH WAS HIDDEN AND DISTORTED DURING THE DICTATORSHIP.

THE FORM FEELS LIKE A RUPTURE OR WOUND IN THE WALL - ARCHITECTURE BEHAVING LIKE A SCAR, MARKING TRAUMA RATHER THAN HIDING IT.



CELLING PLAN OF JAGGED EDGES

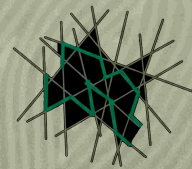


INTERIOR

MEMORY PLAZA

THE IRREGULAR RED LINES SYMBOLIZE THE PATHS, BOUNDARIES, AND MOVEMENTS THAT OCCURRED WITHIN THE DETENTION CENTRE DURING THE DICTATORSHIP.

THESE LINES REPRESENT MEMORIES OF EVENTS, TESTIMONIES, AND LOST LIVES, WHICH ARE FRAGMENTED BUT STILL PRESENT IN THE COLLECTIVE MEMORY OF SOCIETY.



119.7 HECTARE
 295.8 ACRE
 1196768.7 SQ.M



ALL DIMENSIONS ARE IN METERS | SCALE 1:2000

**CONCEPT & SITE ANALYSIS
 INTERPRETATION CENTER**