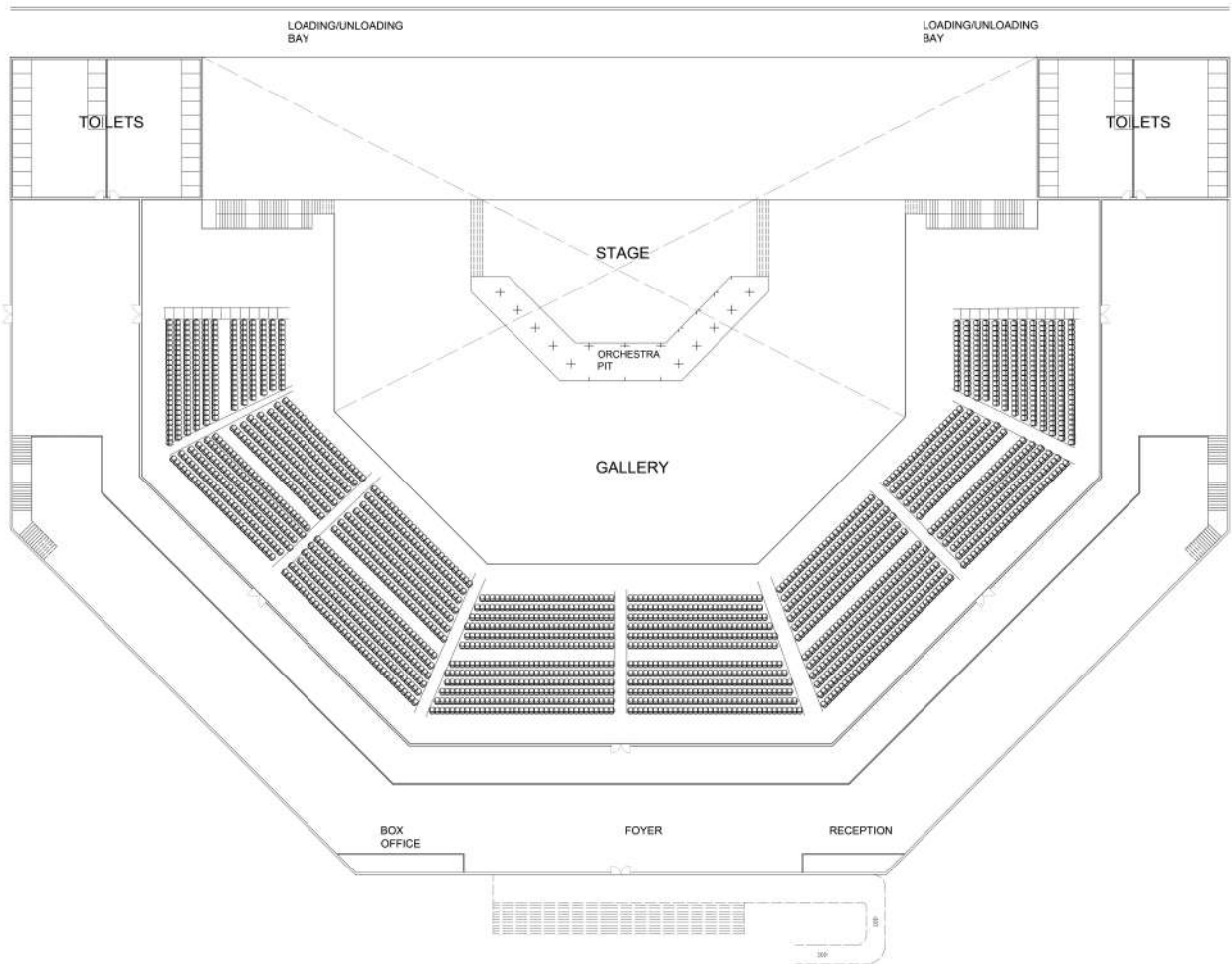
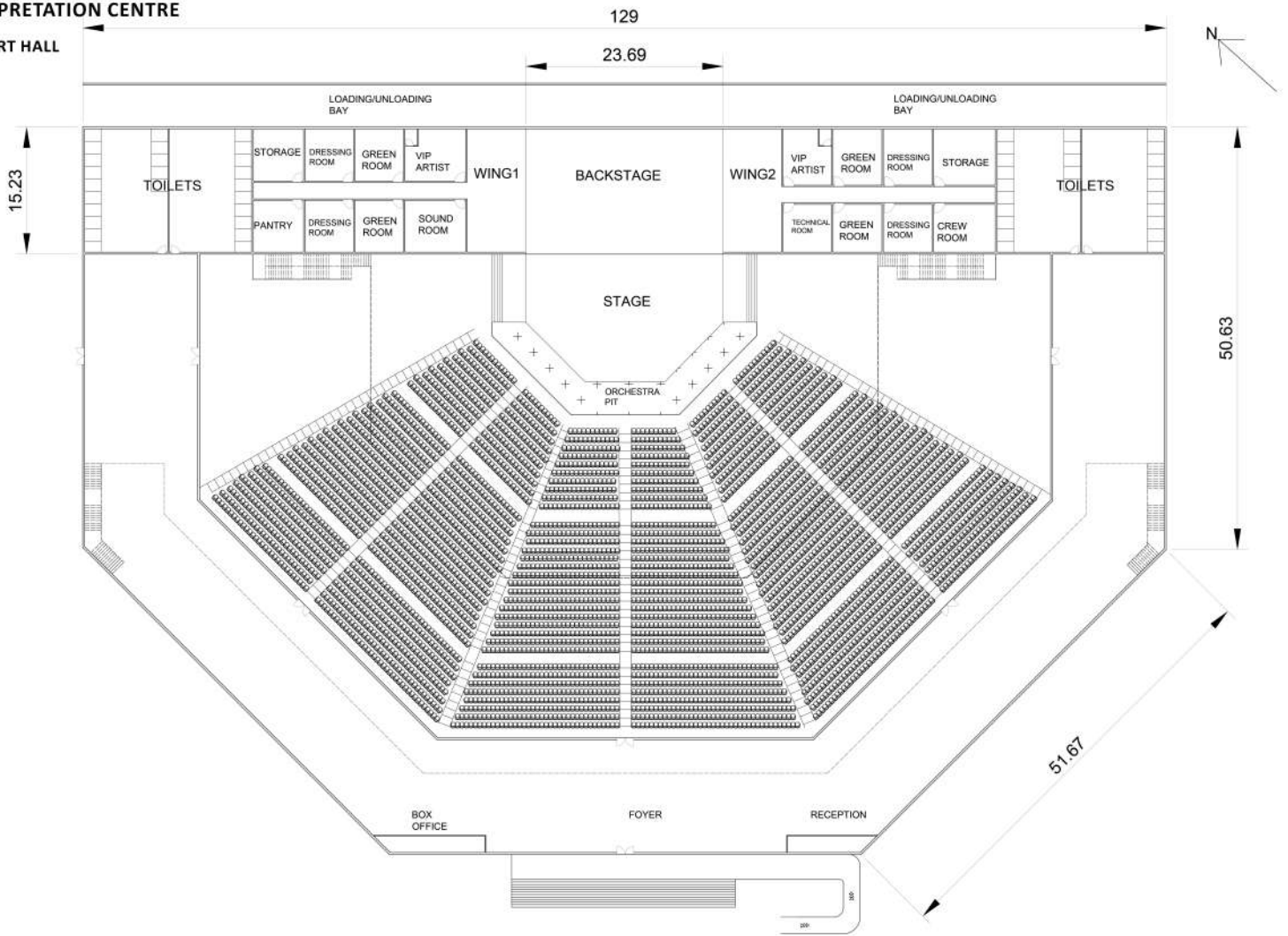


INTERPRETATION CENTRE

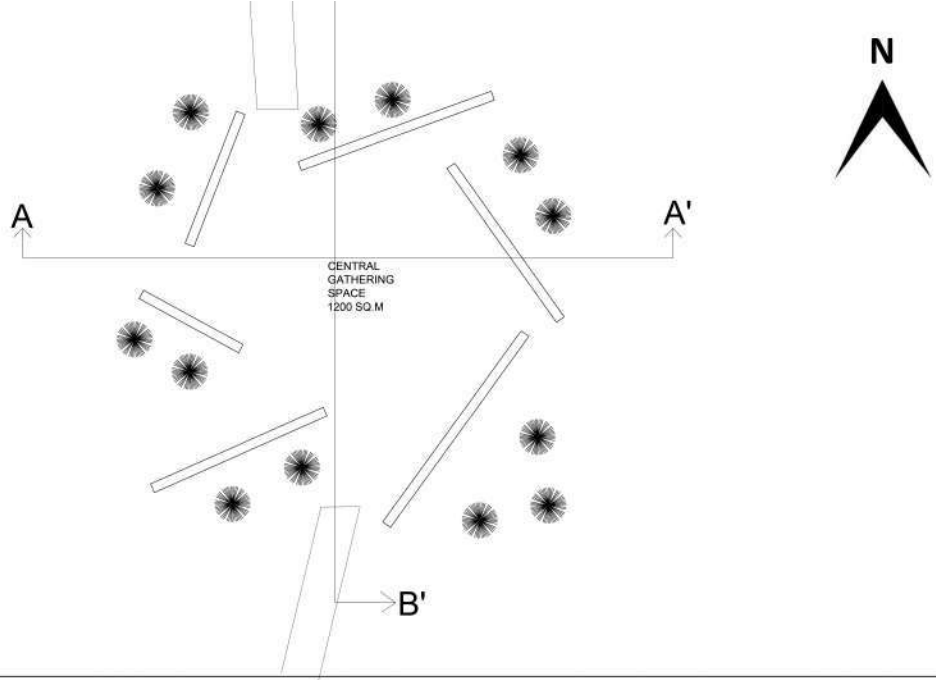
CONCERT HALL



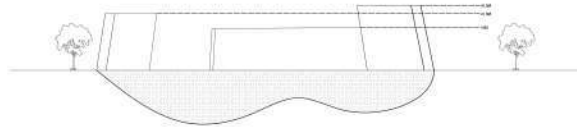
INTERPRETATION CENTRE

MEMORIAL PLAZA

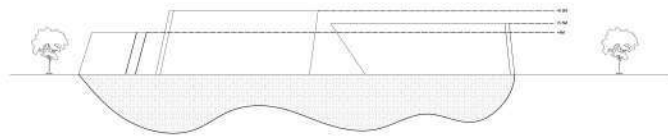
PLAN (1:200)



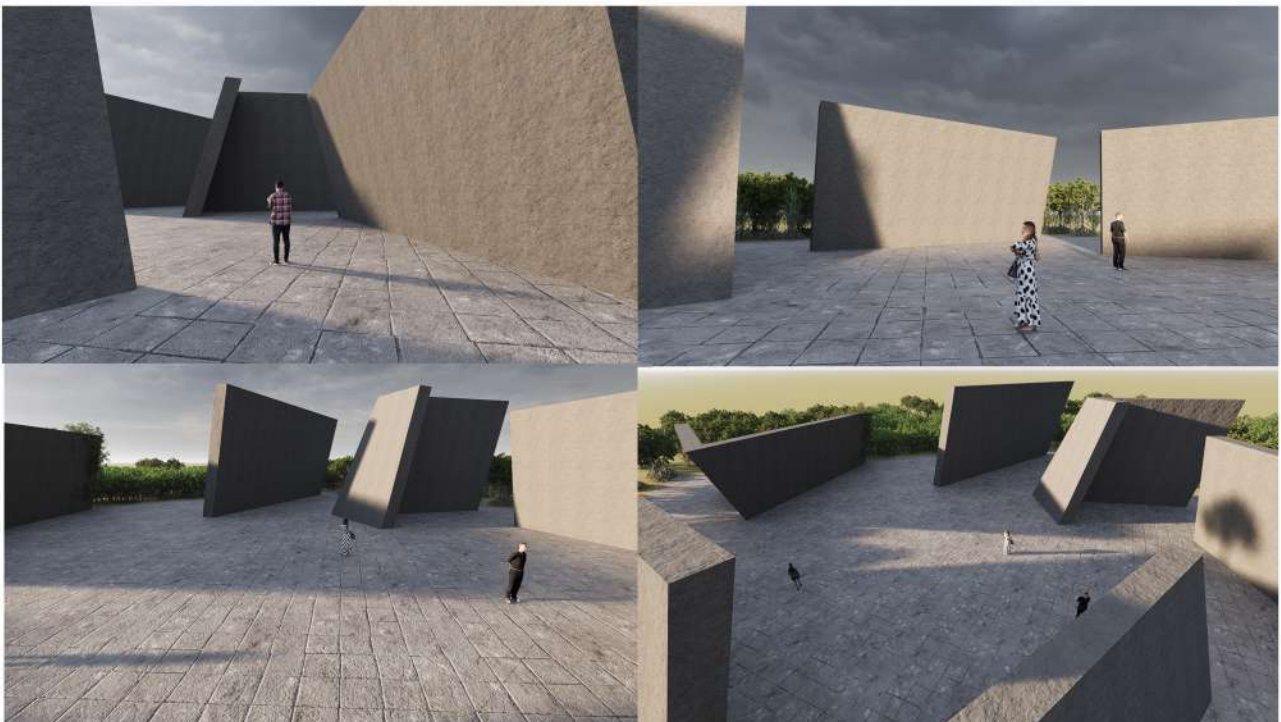
SECTION AA'



SECTION BB'



VIEWS



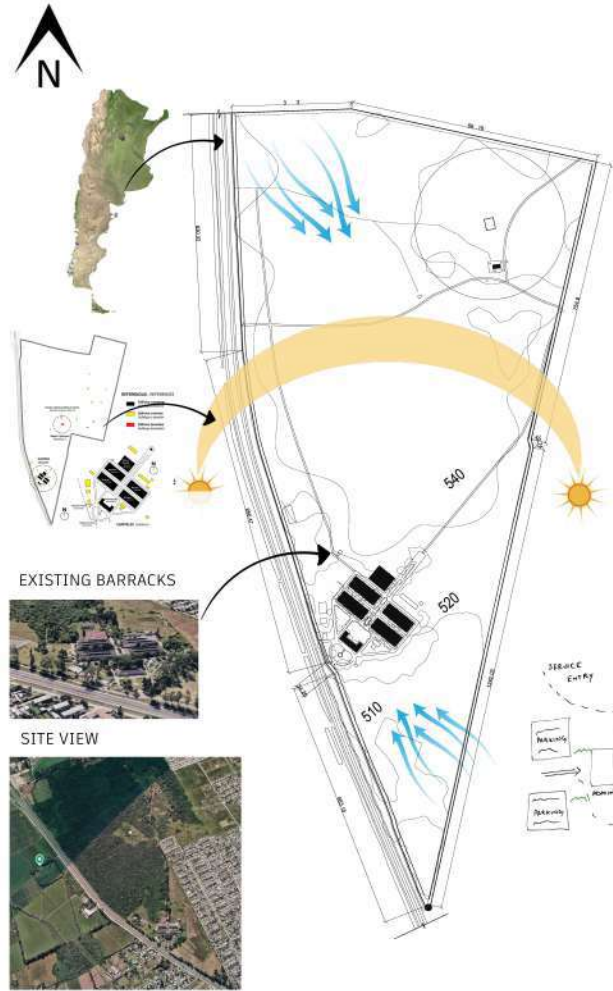


INTERPRETATION CENTRE

SITE ANALYSIS

LOCATION AND CONTEXT

SITE LOCATED IN THE METROPOLITAN REGION OF SAN MIGUEL DE TUCUMÁN. HISTORICAL MILITARY-INDUSTRIAL LANDSCAPE TRANSFORMED INTO A MEMORY PARK SURROUNDED BY DEVELOPING URBAN FABRIC AND OPEN GREEN AREAS. SITE ACTS AS A SYMBOLIC THRESHOLD BETWEEN MEMORY, ECOLOGY, AND PUBLIC LIFE



EXISTING BARRACKS



SITE VIEW



ECOLOGY & VEGETATION

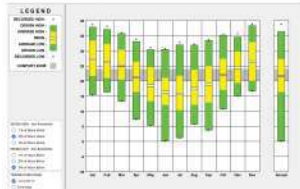
LARGE PORTION OF THE SITE CONSISTS OF WILD GRASSES, SHRUB VEGETATION, MEADOW-TYPE OPEN LANDSCAPE, SEASONAL OVERGROWTH DUE TO ABANDONMENT

TOPOGRAPHY & GEOGRAPHY

GRADUALLY CONTOURED SITE WITH NATURAL DEPRESSIONS CAN ASSIST IN RAINWATER RETENTION AND LANDSCAPE ZONING

WIND ANALYSIS

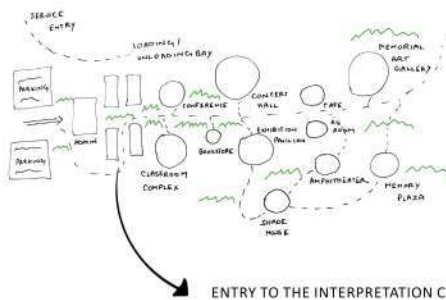
- WINDS PRESENT THROUGHOUT YEAR
- MODERATE SPEEDS
- MULTIPLE DIRECTIONS
- CROSS VENTILATION IS HIGHLY EFFECTIVE
- OPENINGS ALIGN WITH PREVAILING WIND



CLIMATE TYPE

- HOT-HUMID / SUBTROPICAL CLIMATE
- HIGH TEMPERATURE AND HIGH HUMIDITY MOST OF THE YEAR

CONCEPTUAL ZONING



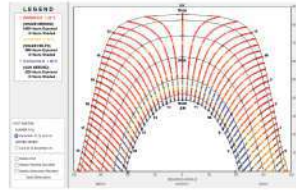
ENTRY TO THE INTERPRETATION CENTRE AMIDST THE EXISTING BARRACKS

TEMPERATURE ANALYSIS

- SUMMER (DEC-FEB): 30-38°C (VERY HOT)
- WINTER (JUN-JUL): 5-20°C (MILD-COOL)
- INFERENCE - COOLING IS DOMINANT
- HEATING IS MINIMAL

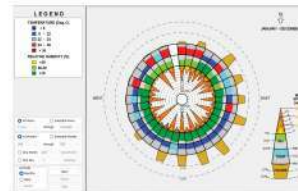
HYDROLOGY & DRAINAGE

- HIGH SEASONAL RAINFALL
- SITE FUNCTIONS AS A POTENTIAL RETENTION BASIN FOR RUNOFF CONTROL
- PERMEABLE LANDSCAPE AND BIOSWALES



SOLAR ANALYSIS

- STRONG SOLAR RADIATION THROUGHOUT THE YEAR
- EAST & WEST SUN IS HARSH
- HIGH SUN ANGLE IN SUMMER
- INFERENCE - SHADING IS CRITICAL
- AVOID DIRECT SOLAR GAIN



HUMIDITY ANALYSIS

- RELATIVE HUMIDITY: 60% - 90% MOST OF THE YEAR
- HIGH HUMIDITY EVEN IN SUMMER
- INFERENCE - CAUSES DISCOMFORT
- REDUCES PASSIVE COOLING

S

RICH HISTORICAL SIGNIFICANCE
STRATEGIC LOCATION: SITUATED ALONG ROUTE 9, A HIGH-TRAFFIC CORRIDOR WITH DIRECT ACCESS TO THE CITY CENTER AND POTENTIAL FOR HIGH-QUALITY TERTIARY AND ADMINISTRATIVE DEVELOPMENT.

PRESERVED HERITAGE ASSETS: KEY STRUCTURES LIKE GALPÓN 9 AND THE BARRACKS BUILDINGS REMAIN AS PHYSICAL LANDMARKS OF THE SITE'S HISTORY.

W

RESTRICTED-USE ZONES: THE 200-METER RADIUS AROUND IDENTIFIED MASS GRAVES LIMITS CONSTRUCTION AND ACTIVITY IN THE SITE'S MOST HISTORICALLY SIGNIFICANT AREAS

LOSS OF EVIDENCE: DELIBERATE DEMOLITION OF PERIMETER FENCES AND AUXILIARY BUILDINGS AFTER THE DETENTION CENTER WAS DEACTIVATED HAS ERASED PARTS OF THE ORIGINAL LAYOUT.

O

URBAN INTEGRATION: DEVELOPMENT CAN RECONNECT A "DISRUPTED" URBAN FABRIC CAUSED BY THE SITE'S PREVIOUS OBSTRUCTIVE MILITARY USE

SOCIAL & ACADEMIC CATALYST: A LOCAL UNIVERSITY'S INTEREST IN THE BARRACKS SUGGESTS THE SITE COULD BECOME A VIBRANT CENTER FOR RESEARCH, EDUCATION, AND CIVIC PARTICIPATION.

MODERN INFRASTRUCTURE: THE SITE CAN ADDRESS TUCUMÁN'S SHORTAGE OF RESIDENTIAL SPACE AND MODERN INFRASTRUCTURE THROUGH PLANNED URBANIZATION

T

FLOODING RISKS: RUNOFF FROM HIGHER GROUND POSES A POTENTIAL FLOODING THREAT THAT THE PARK'S DESIGN MUST PROACTIVELY MITIGATE.

URBANSRAWL: THE SURROUNDING METROPOLITAN AREA IS EXPANDING IN A "DISORGANIZED" MANNER, WHICH COULD OVERWHELM OR ISOLATE THE SITE IF NOT PROPERLY INTEGRATED.

CONCEPT SHEET - INTERRUPTED MONOLITH

PROJECT DESCRIPTION THE ARSENAL MEMORY PARK IS A TRANSFORMATIVE ARCHITECTURAL INTERVENTION ON A 350-HECTARE SITE FORMERLY USED AS A MILITARY CLANDESTINE DETENTION CENTER. THE DESIGN ADDRESSES THE HEAVY HISTORICAL TRAUMA OF THE "ARSENAL" BY CONVERTING IT INTO AN INTERPRETATION CENTRE THAT BALANCES FORENSIC PRESERVATION WITH URBAN REVITALIZATION. THIS SITE INTEGRATES SIGNIFICANT HISTORICAL LANDMARKS, SUCH AS GALPÓN 9 AND IDENTIFIED MASS GRAVES, INTO A COHESIVE URBAN PARK SYSTEM.

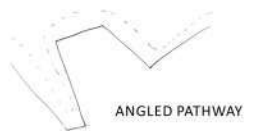
PROJECT IDEA THE PROJECT IDEA IS ROOTED IN THE PHYSICAL MANIFESTATION OF INTERRUPTED HISTORY. BY DESIGNING SHARP GEOMETRIES AND NON-ORTHOGONAL PLANES, THE DESIGN "BREAKS" THE SILENCE OF THE ABANDONED MILITARY GROUNDS. THESE FRACTURES REPRESENT THE LIVES DISRUPTED DURING THE CLANDESTINE OPERATIONS, CREATING A SPATIAL NARRATIVE WHERE THE GROUND LITERALLY PEELS BACK TO REVEAL THE TRUTH BENEATH

DESIGN THE CORE CONCEPT IS ACTIVE MEMORY, SHIFTING AWAY FROM PASSIVE MONUMENTS TOWARD A LIVING, BREATHING URBAN ENVIRONMENT.

THE ANGLE OF TRUTH: SHARP, ANGLED WALLS SERVE AS "SHARDS" THAT EMERGE FROM THE EARTH, ACTING AS VISUAL POINTERS TOWARD ZONES OF FORENSIC SIGNIFICANCE.

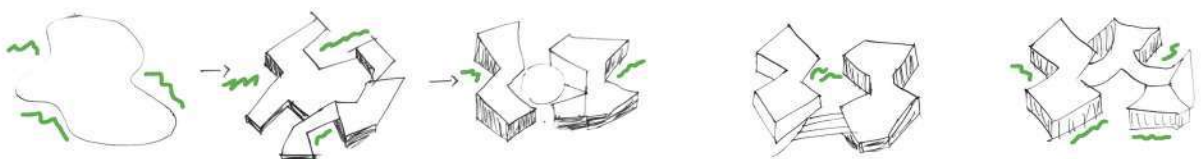
HEALING SCARS: PATHS ARE CARVED INTO THE TOPOGRAPHY AT AGGRESSIVE ANGLES, MIMICKING THE ACT OF EXCAVATION AND PROVIDING SHELTERED "VOIDS" FOR REFLECTION.

PALIMPSEST OF LAYERS: THE DESIGN ACKNOWLEDGES THE SITE'S MILITARY PAST, INDUSTRIAL HISTORY, AND FUTURE AS AN ECOLOGICAL PARK, LAYERING THESE FUNCTIONS THROUGH A COMPLEX GEOMETRY OF INTERSECTION



ANGLED PATHWAY

FORM DEVELOPMENT



ADAPTING TO THE NATURAL SITE AND TOPOGRAPHY

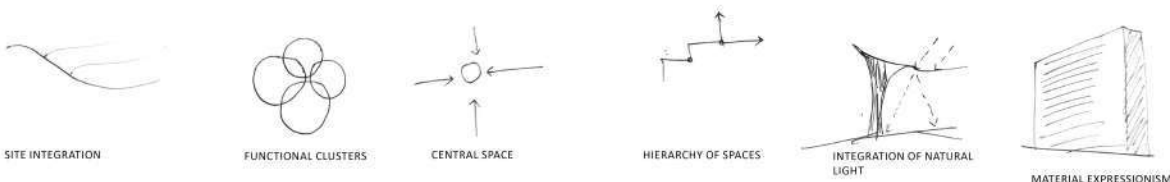
BREAKING THE MASS INTO FUNCTIONAL CLUSTERS CONNECTED BY COURTYARDS

CREATING A CENTRAL INTERACTIVE SPACE

DEFINING ENTRY POINTS AND ESTABLISHING HIERARCHY OF SPACES

CREATING ROOF FORMS AND OPENINGS TO BRING IN MORE NATURAL LIGHT

DESIGN PRINCIPLES



SITE INTEGRATION

FUNCTIONAL CLUSTERS

CENTRAL SPACE

HIERARCHY OF SPACES

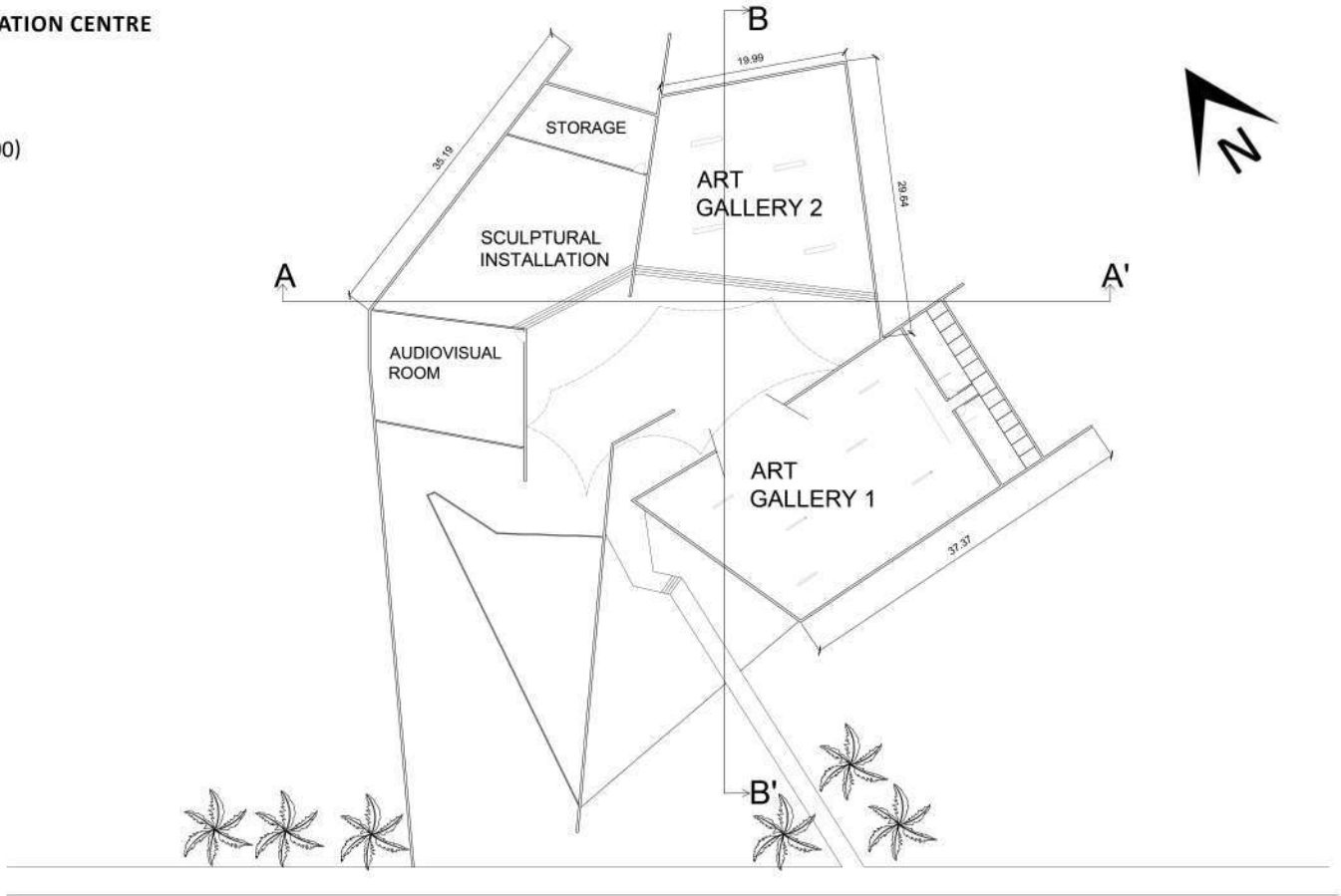
INTEGRATION OF NATURAL LIGHT

MATERIAL EXPRESSIONISM

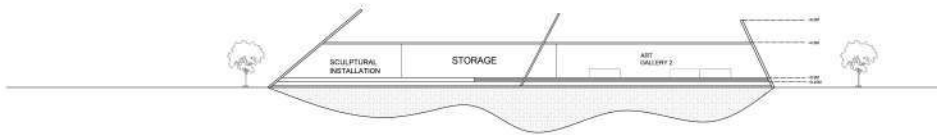
INTERPRETATION CENTRE

ADMIN

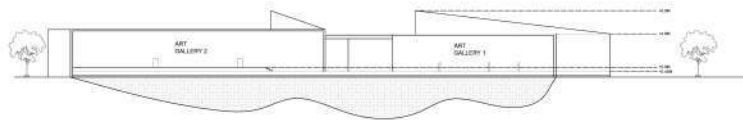
PLAN (1:200)



SECTION AA'

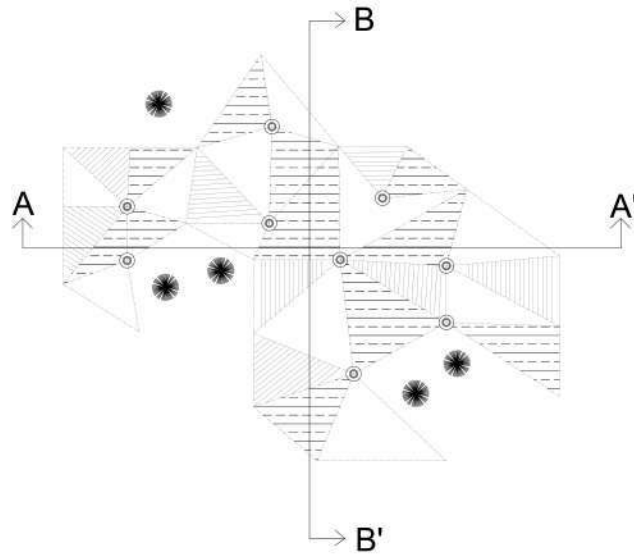


SECTION BB'



VIEWS

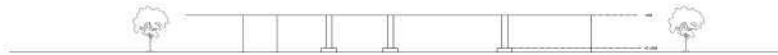




SECTION AA'

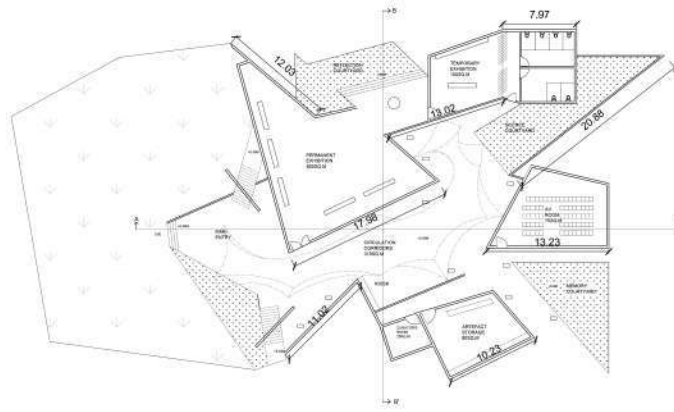


SECTION BB'

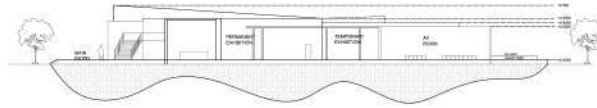


VIEWS

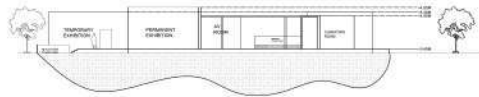




SECTION AA'



SECTION BB'



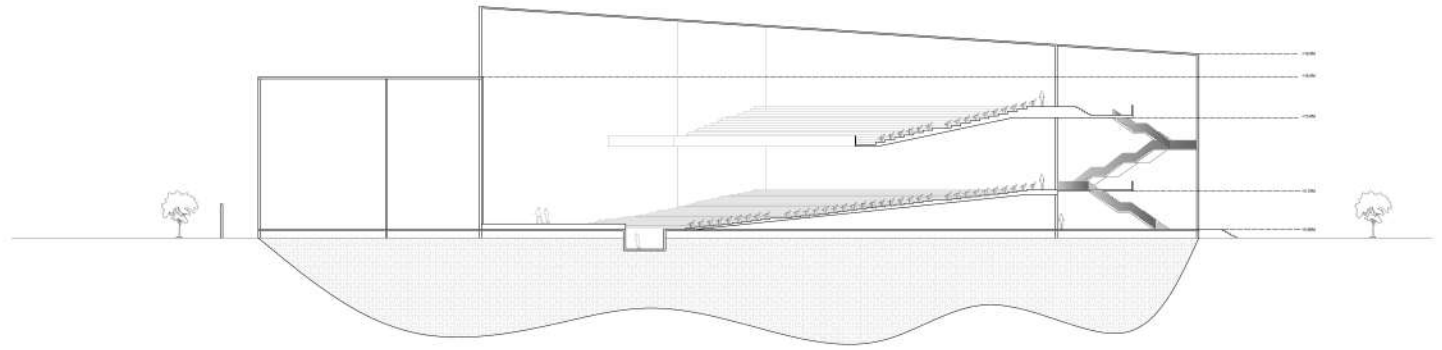
VIEWS



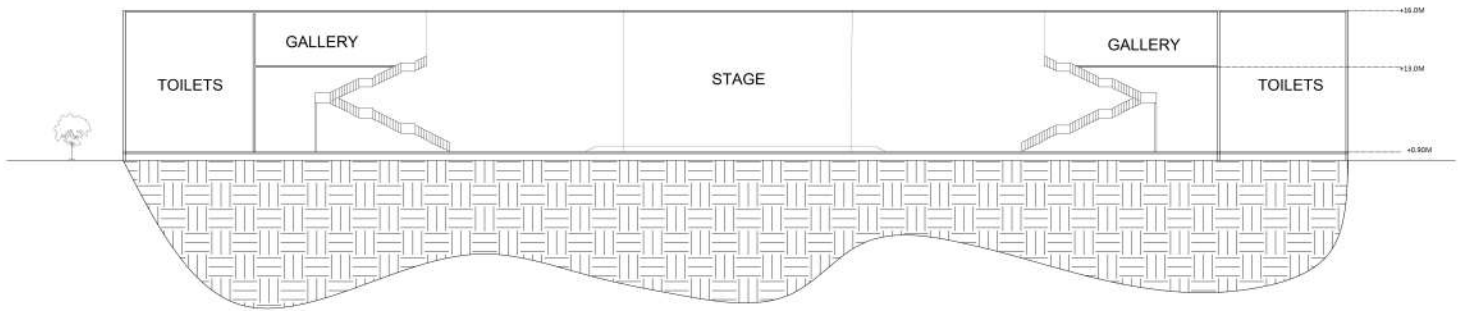
INTERPRETATION CENTRE

CONCERT HALL - SECTIONS AND VIEWS

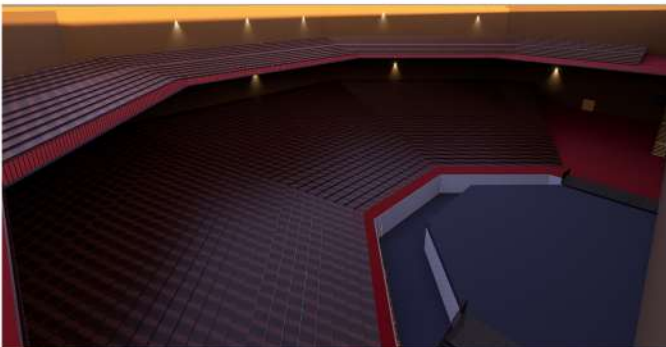
SECTION AA'



SECTION BB'



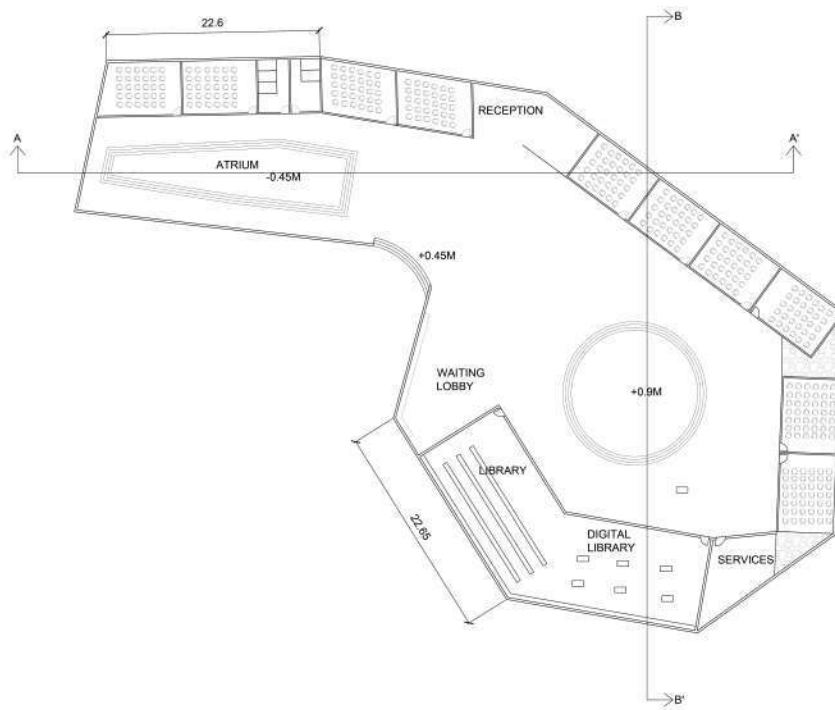
VIEWS



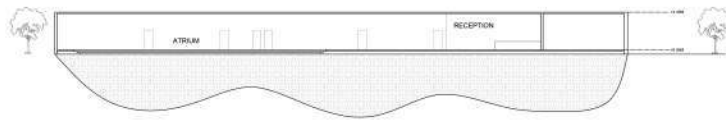
INTERPRETATION CENTRE

CLASSROOM COMPLEX

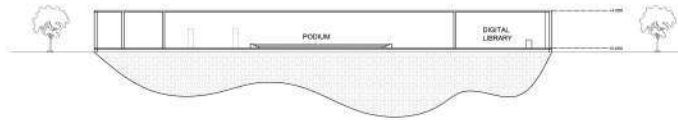
PLAN (1:200)



SECTION AA'



SECTION BB'



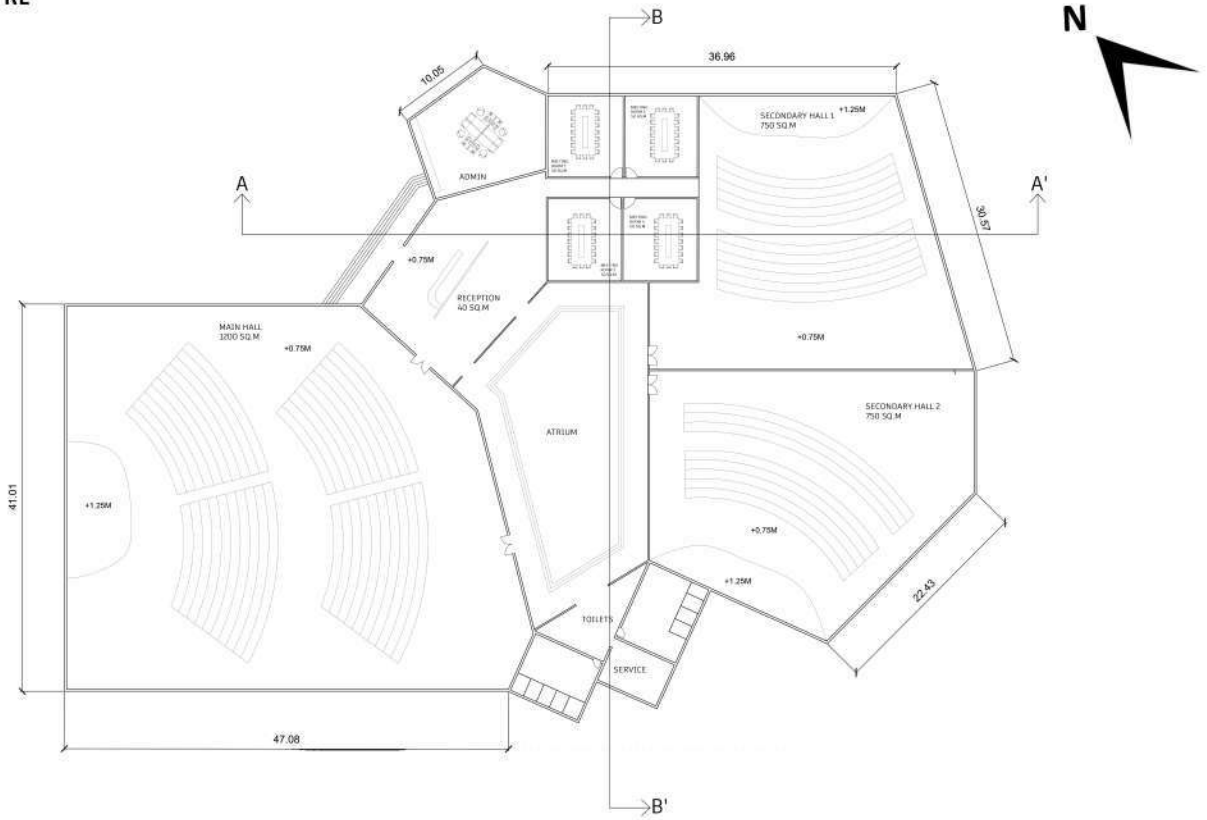
VIEWS



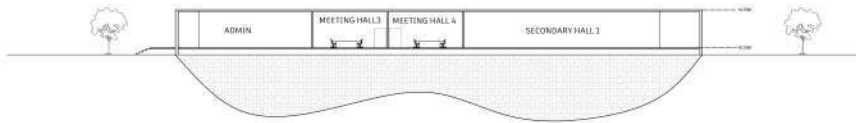
INTERPRETATION CENTRE

CONFERENCE ROOM

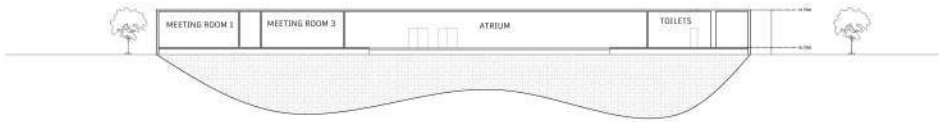
PLAN (1:200)



SECTION AA'



SECTION BB'



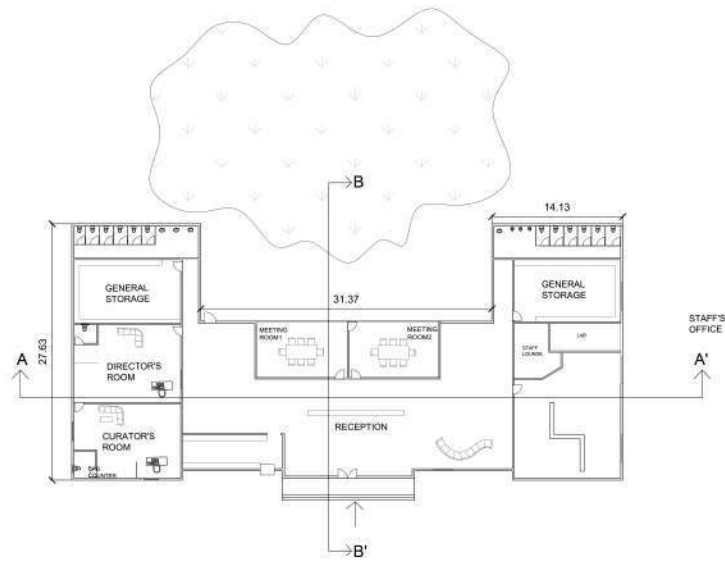
VIEWS



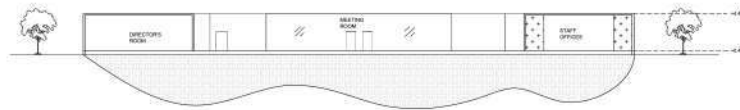
INTERPRETATION CENTRE

ADMIN

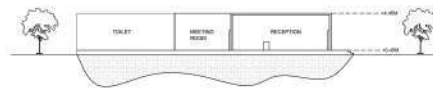
PLAN (1:200)



SECTION AA'



SECTION BB'



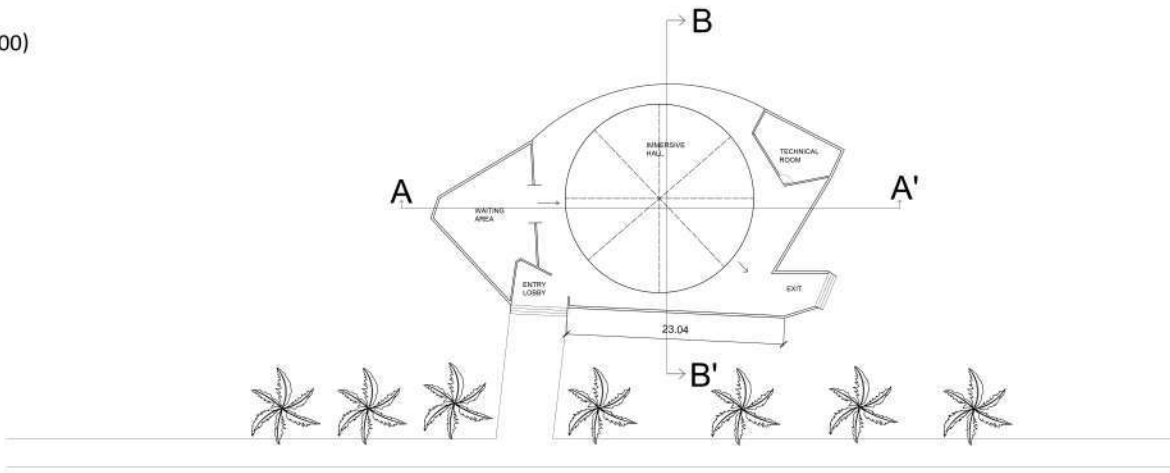
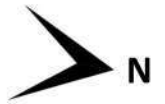
VIEWS



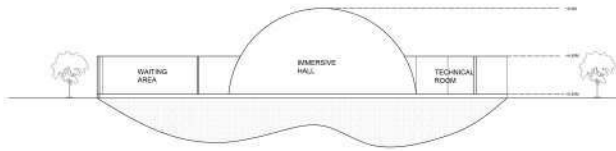
INTERPRETATION CENTRE

ADMIN

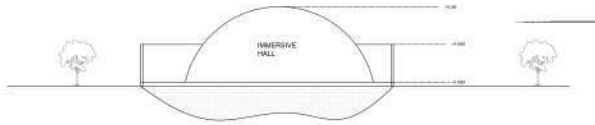
PLAN (1:200)



SECTION AA'



SECTION BB'



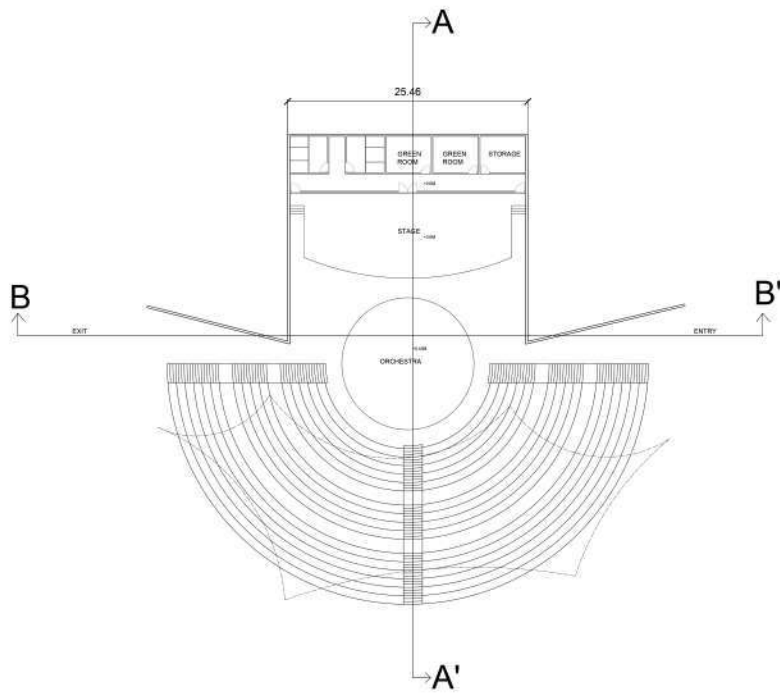
VIEWS



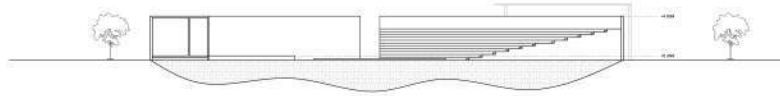
INTERPRETATION CENTRE

AMPHITHEATER

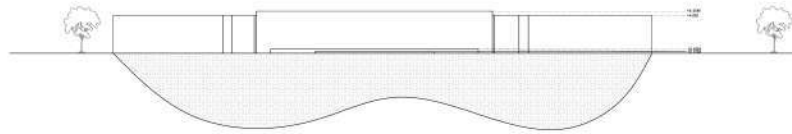
PLAN (1:200)



SECTION AA'



SECTION BB'

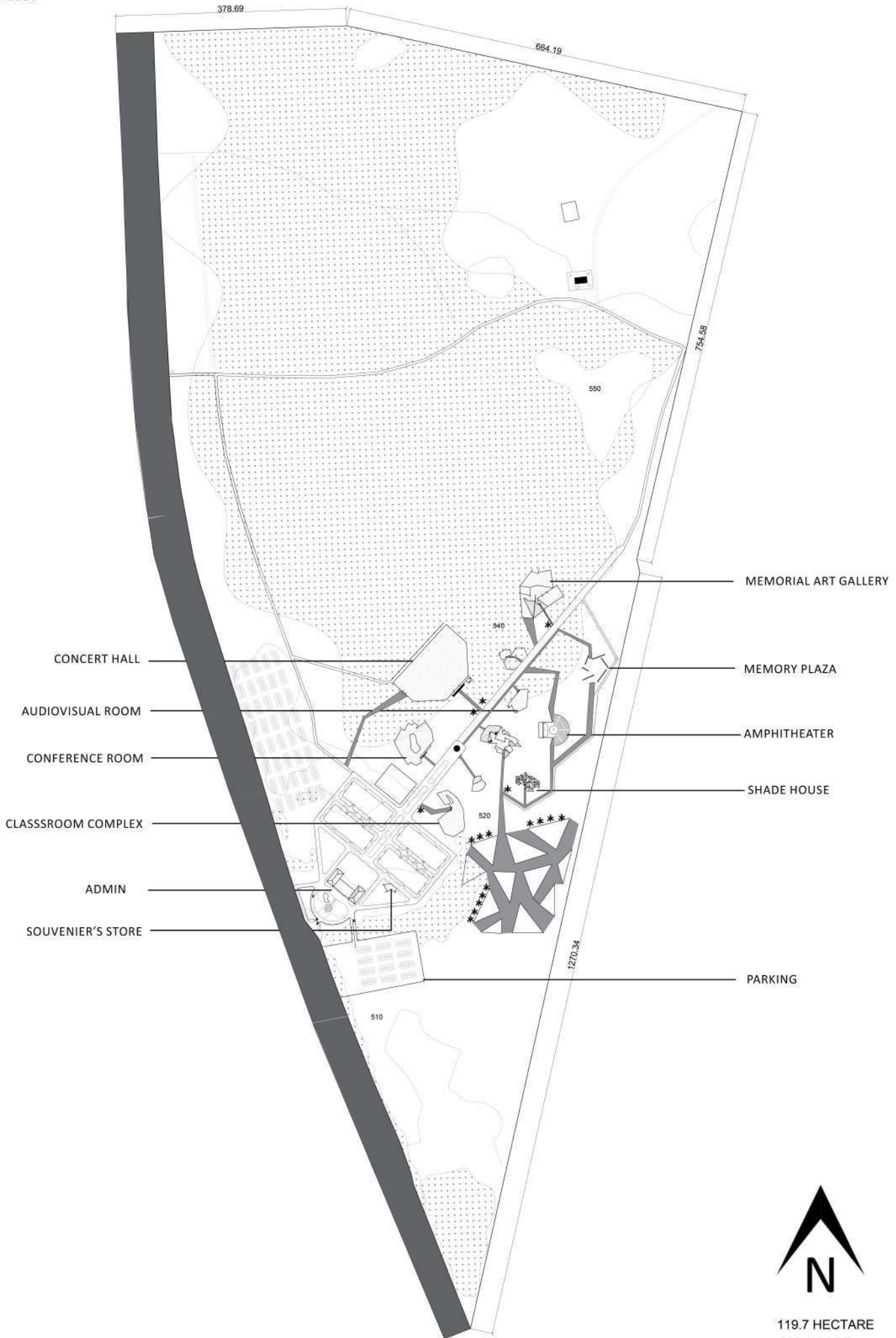


VIEWS



INTERPRETATION CENTRE

SITE PLAN
1 : 2000



119.7 HECTARE
295.8 ACRE
1196768.7 SQ.M