



NAME:

**A.K.SRINIDHI ABINETHRA**



UNIVERSITY NAME:

**CRESCENT SCHOOL  
OF ARCHITECTURE**



SUPERVISOR NAME:

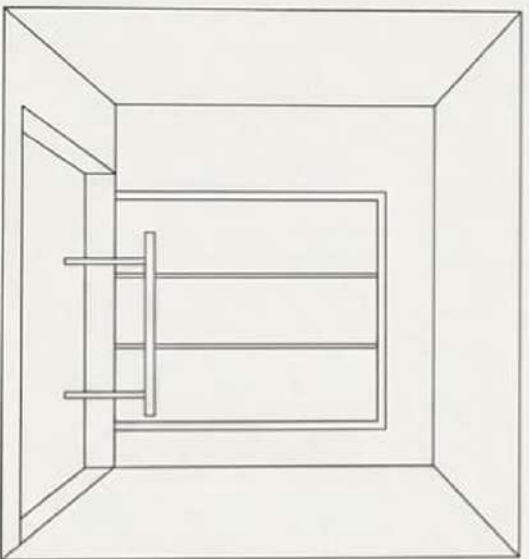
**AR SARITHA**



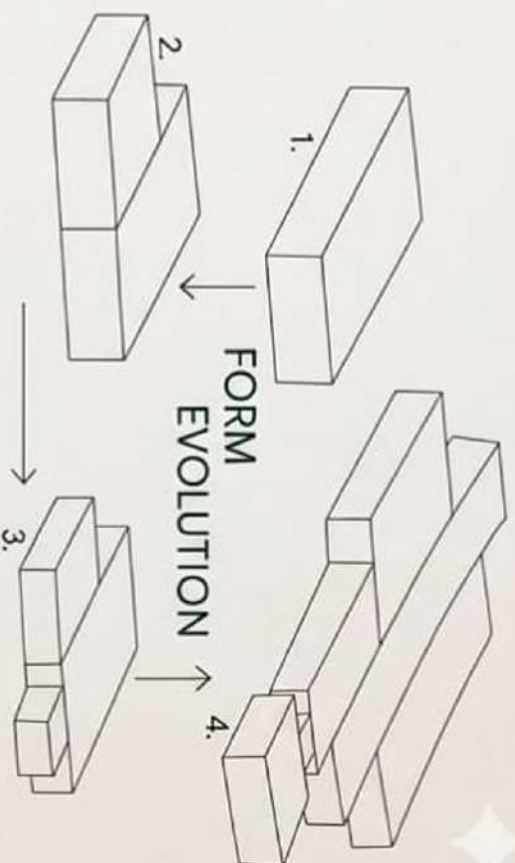
AIM OF THE PROJECT:

The project aims to stimulate and reward innovative thinking about how a house can be designed to the client. The design should harmonize with the natural environment, incorporate sustainable practices, and demonstrate innovative spatial solutions.

It allows you to gain knowledge about design methodologies and functions of spaces. It also involves standards study about the spaces to achieve the required design.



## SUNKEN DINING



### PLAN - CONCEPT

The plan reflects a contrast between strength and withdrawal... while plan (Geometry fragmented and BOLD, The INTERNAL.

Each BEND creates:

- Visual Pause
- Psychological Break
- Sense of Discovery

### OPENING: TOWARDS THE BEACH.

- Living and dining spaces stretch towards the left.
- Wider facades, fewer obstructions.
- Longer visual connection.

### PRIVACY THROUGH PLANNING.

- Spaces are shifted and staggered.
- Direct views between public and private areas are blocked.
- Each space feels independent, yet connected.

## A LAYERED

## COASTAL RETREAT



## VIEW

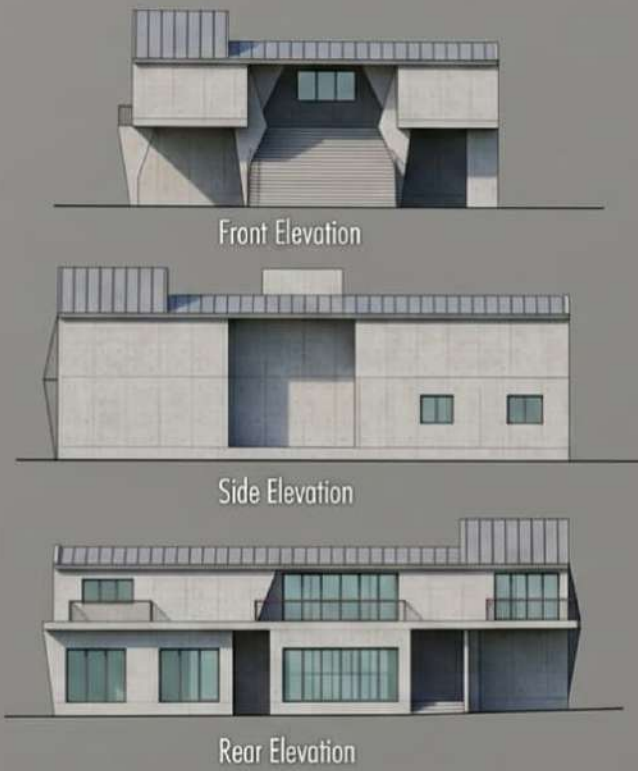
# WEEKEND COTTAGE



## FIRST FLOOR PLAN



## GROUND FLOOR PLAN



## SECTION & ELEVATION

By Sivatcan Adilkasimov,  
23112023





A.S. Gerçelik İnşaat  
Çiğdemler





