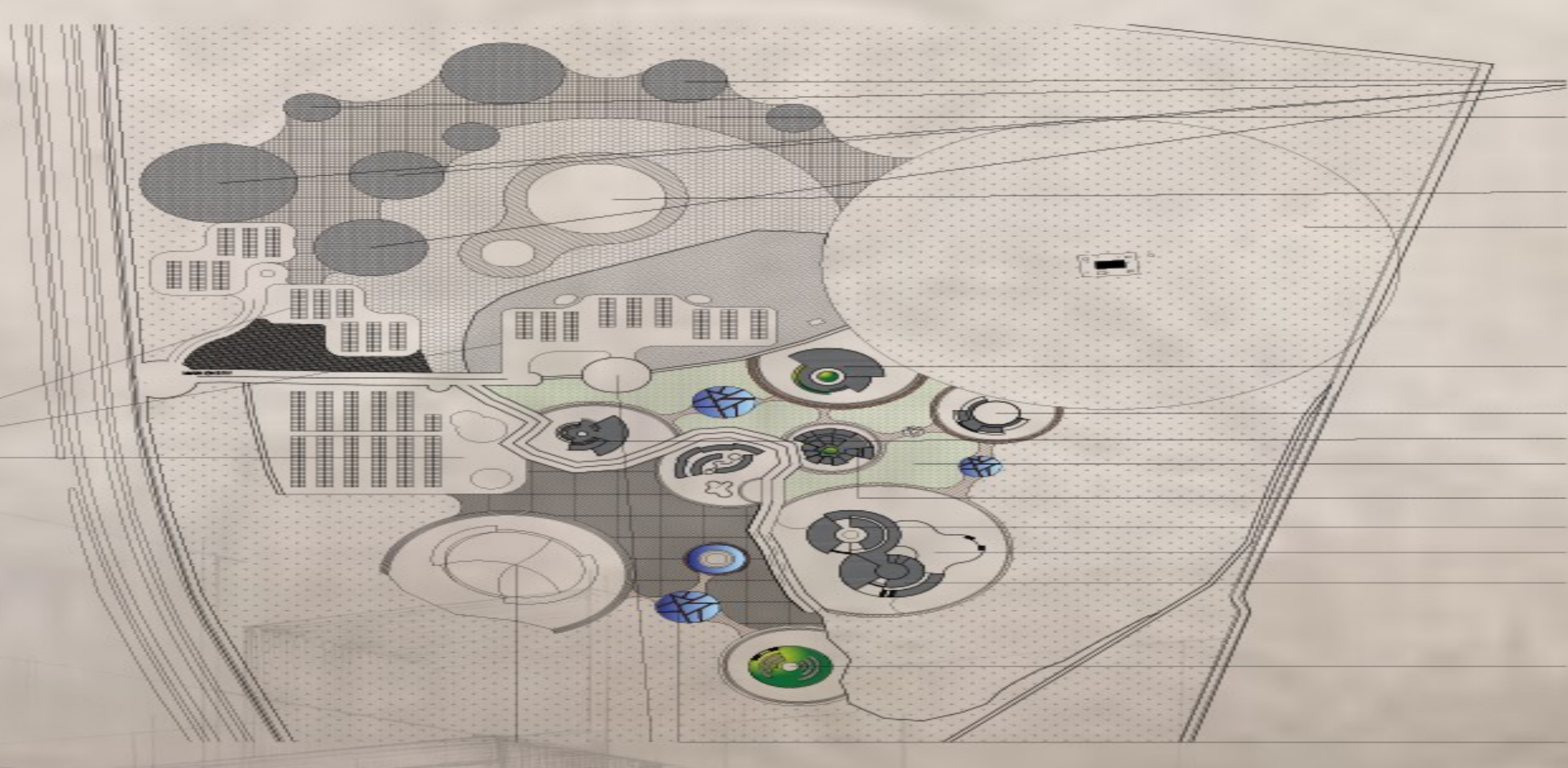


# PLAN - GROUND FLOOR SCALE 1:200



## KEY PLAN



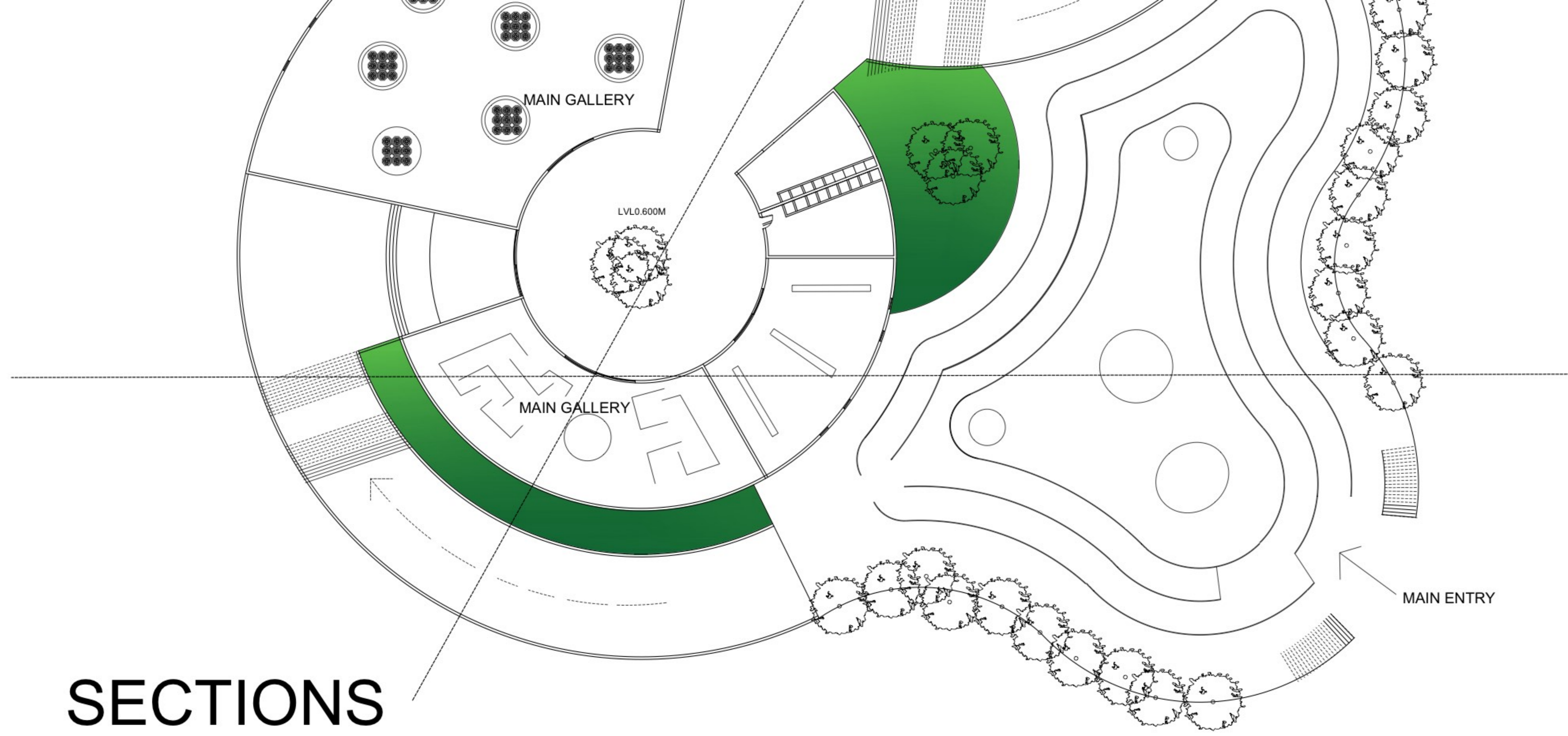
## DECONSTRUCTIVISM FRAGMENTATION

DECONSTRUCTIVISM THE ANATOMY OF TRUTH  
 . IT USES **OPEN** TO DEMAND **ATTENTION**, **DESCENT** TO HOLD  
 SPACE FOR **SUBTLE**, AND **SLANTED** ANGLES TO PHYSICALLY  
 RECREATE THE **STRUCTURE OF THE DISAPPEARED**. THE RESULTING  
 PUZZLE OF RAW CONCRETE AND LANDSCAPED NODES CREATES  
 A SOMATIC ARCHIVE WHERE MEMORY IS NOT JUST SEEN,  
 BUT PHYSICALLY FELT."

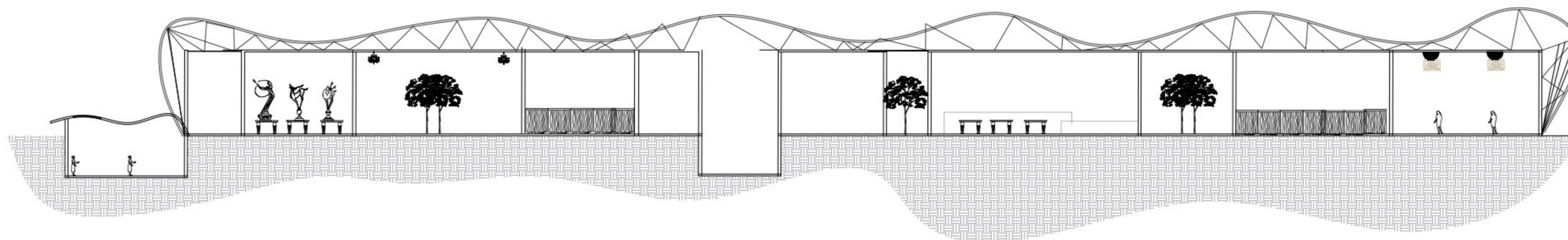


PrintableParadise.com

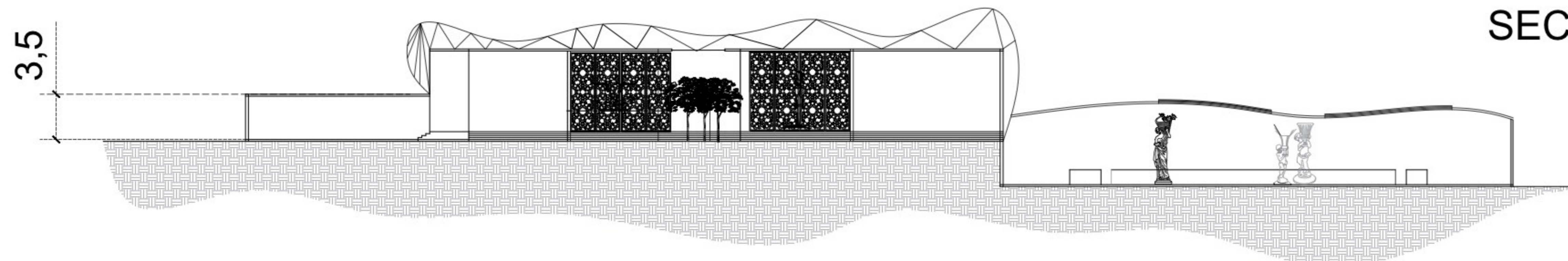
## 1 A-SITE PLAN



**SECTIONS**

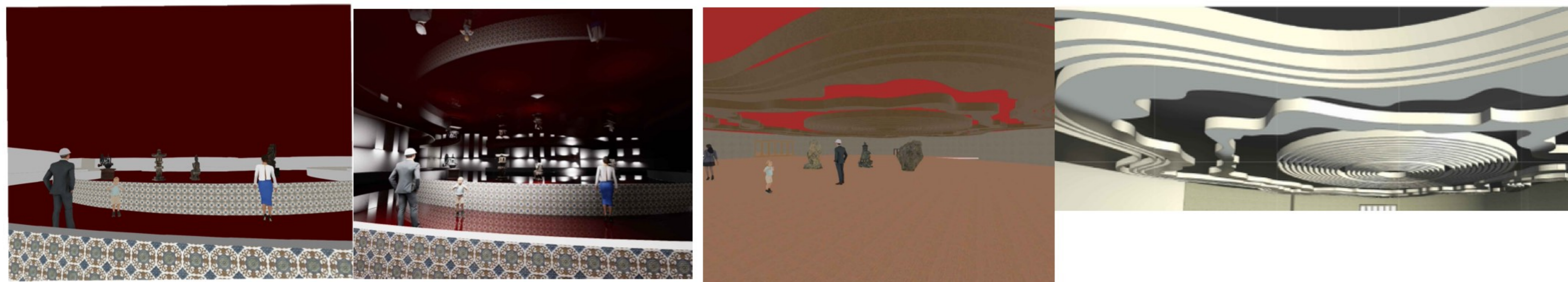


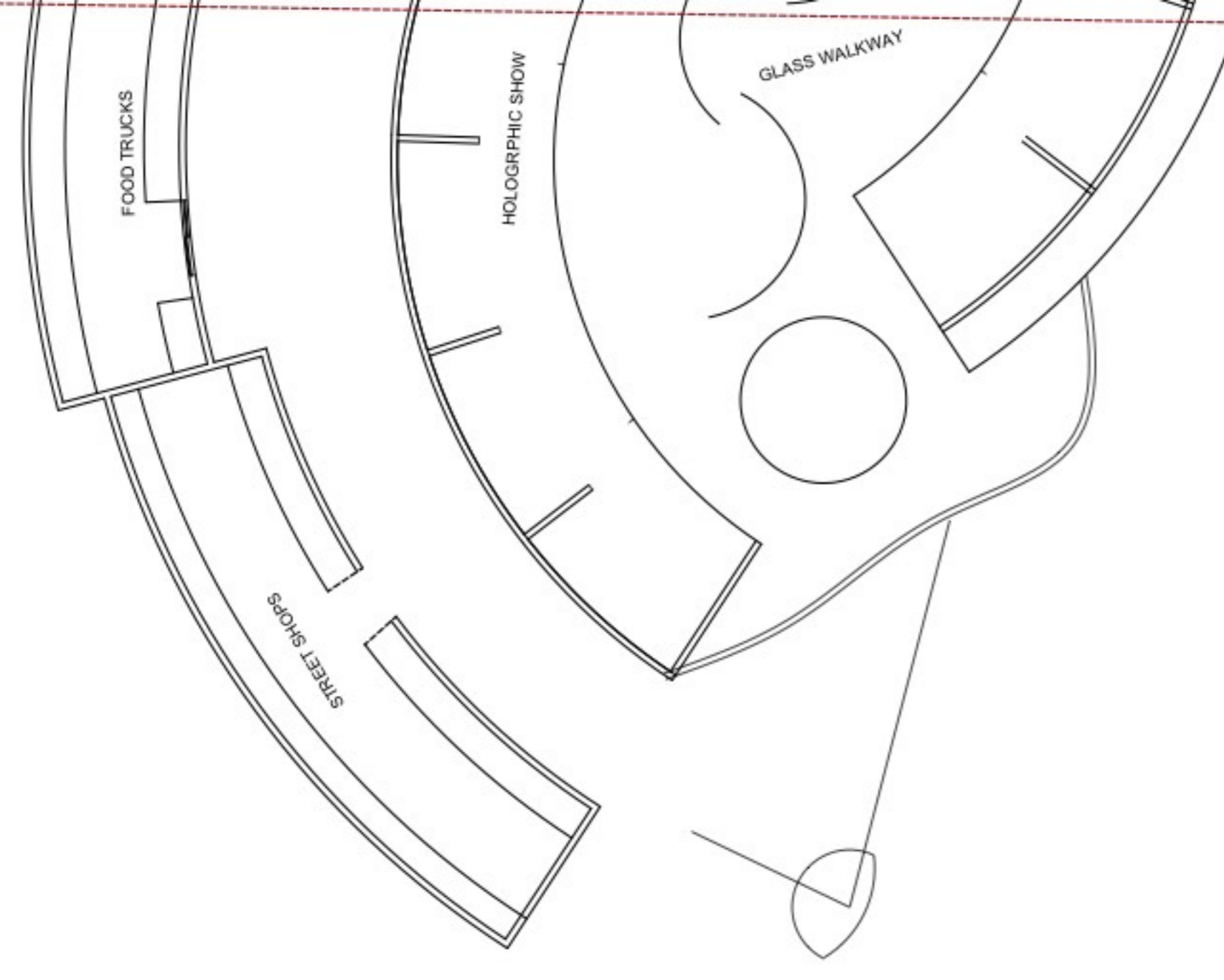
SECTIONS AA'



SECTIONS BB'

**VIEWS**

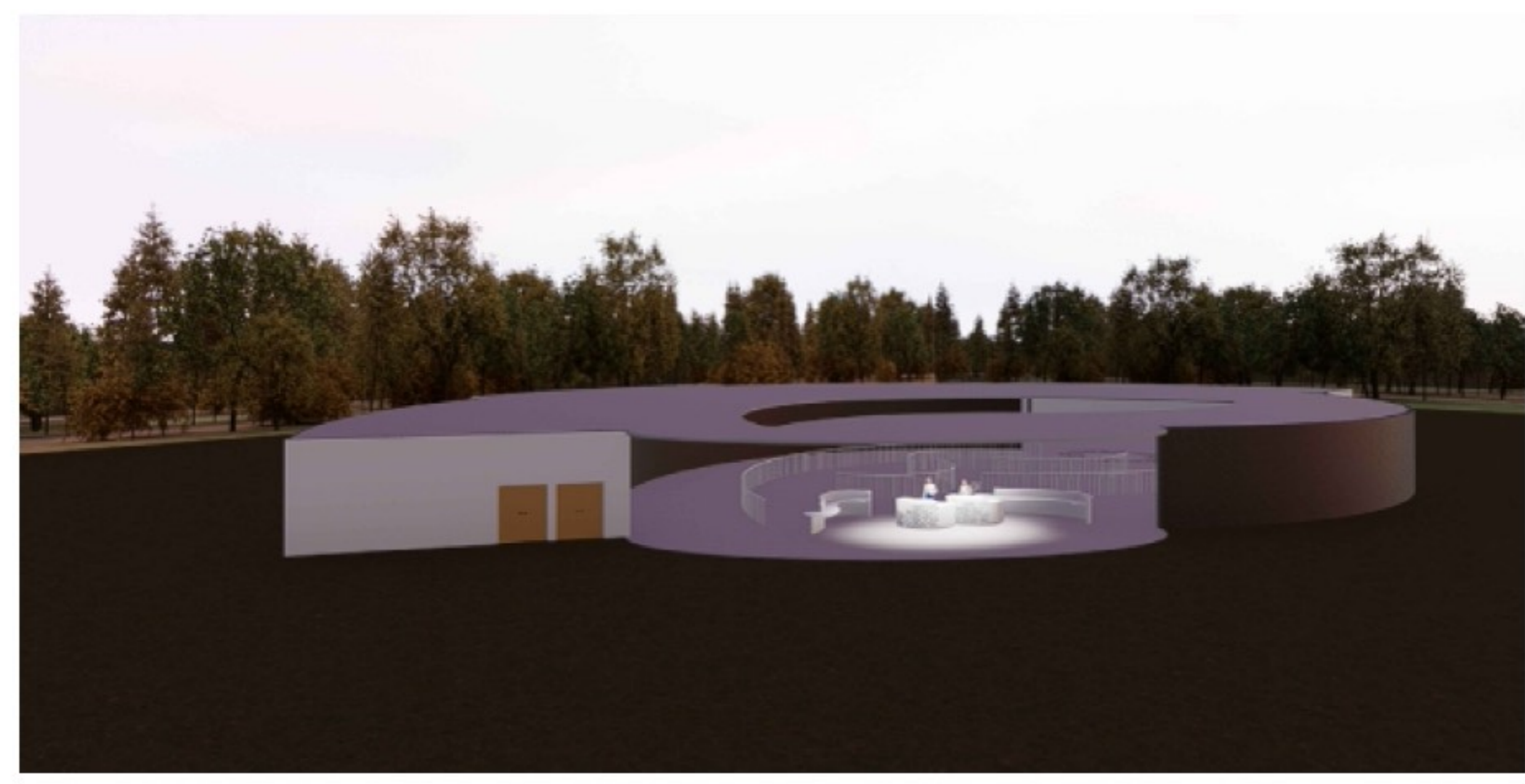
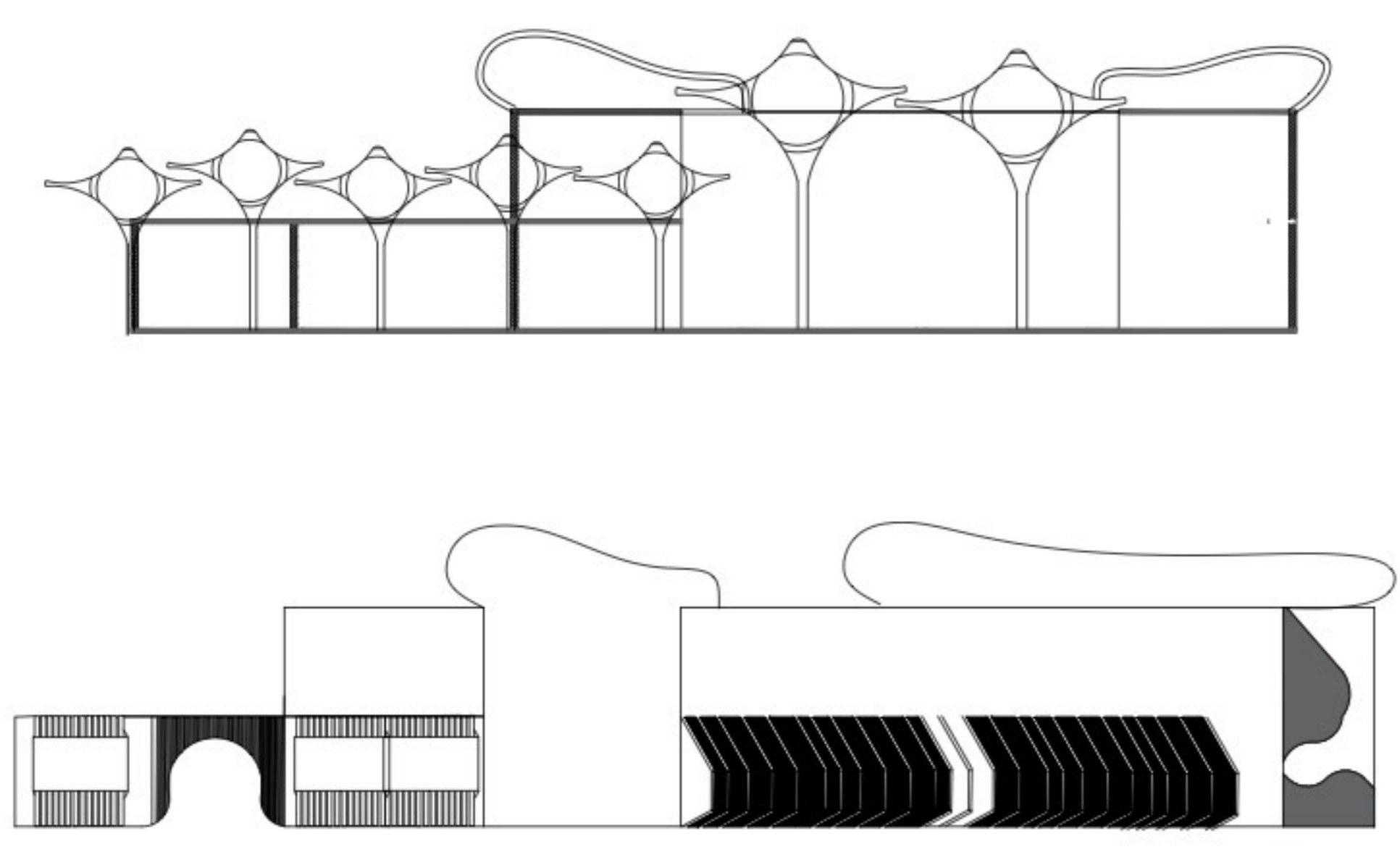




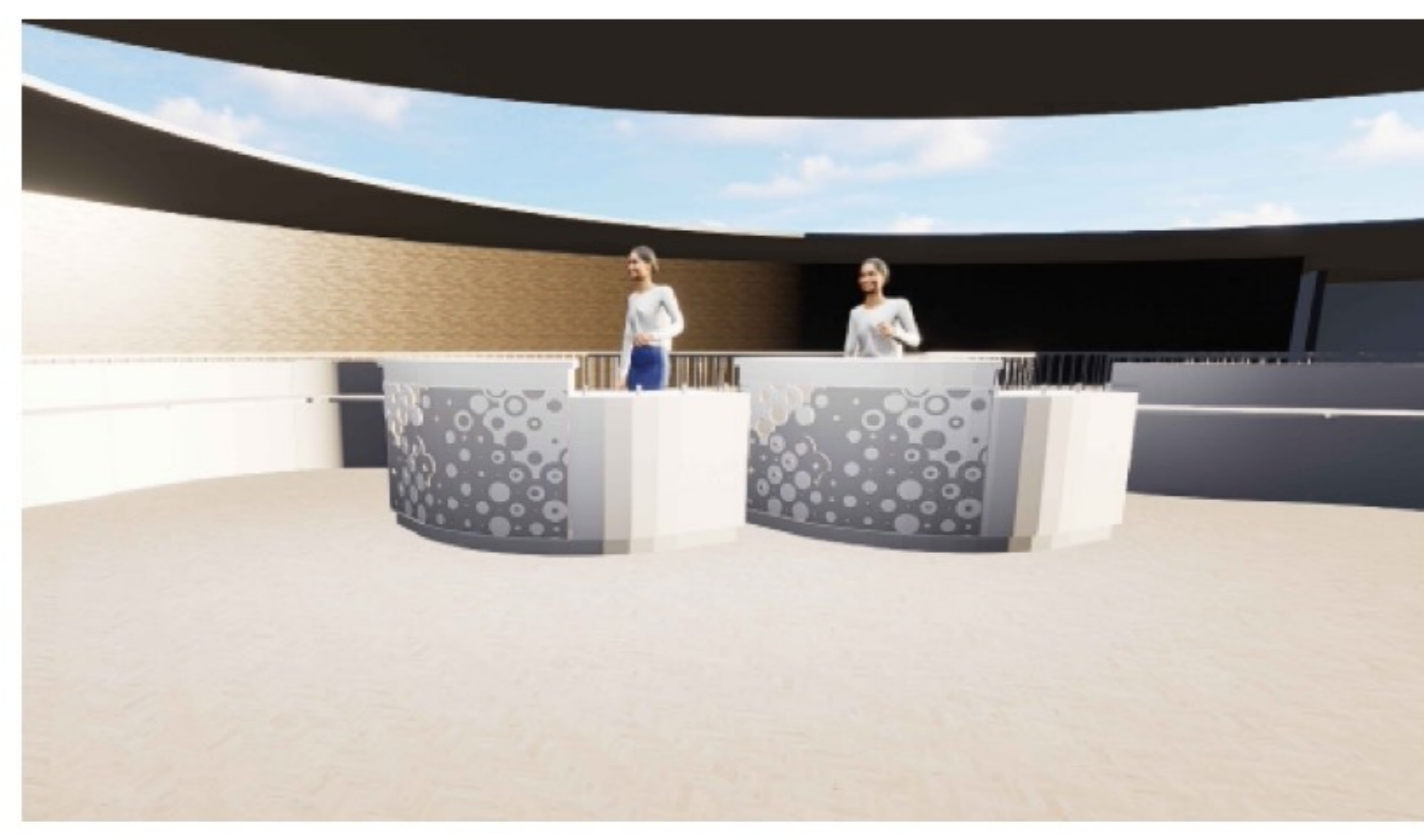
The intermediate Ring. This layer features "PHOTOGRAPHIC SHOW" spaces, acting as a buffer and transition between the noisy commercial outer ring and the inner experiential core.

The Inner Core: A central "GLASS WALKWAY" and circular water feature or gathering node define the heart of the block.

## SECTIONS

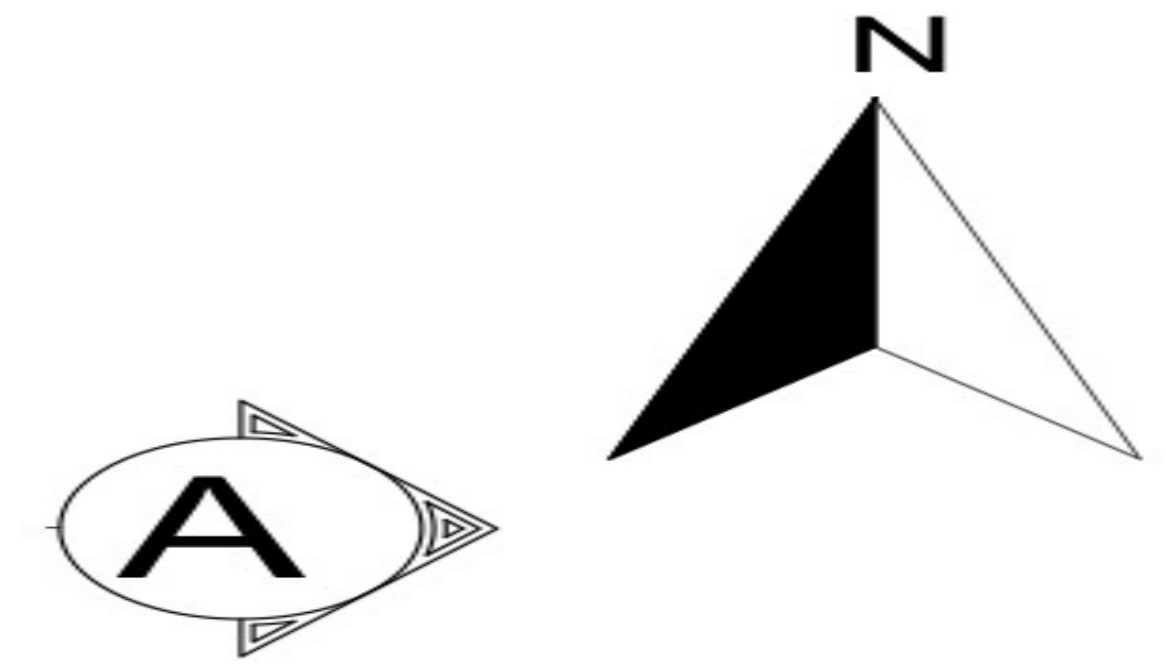


## VIEWS

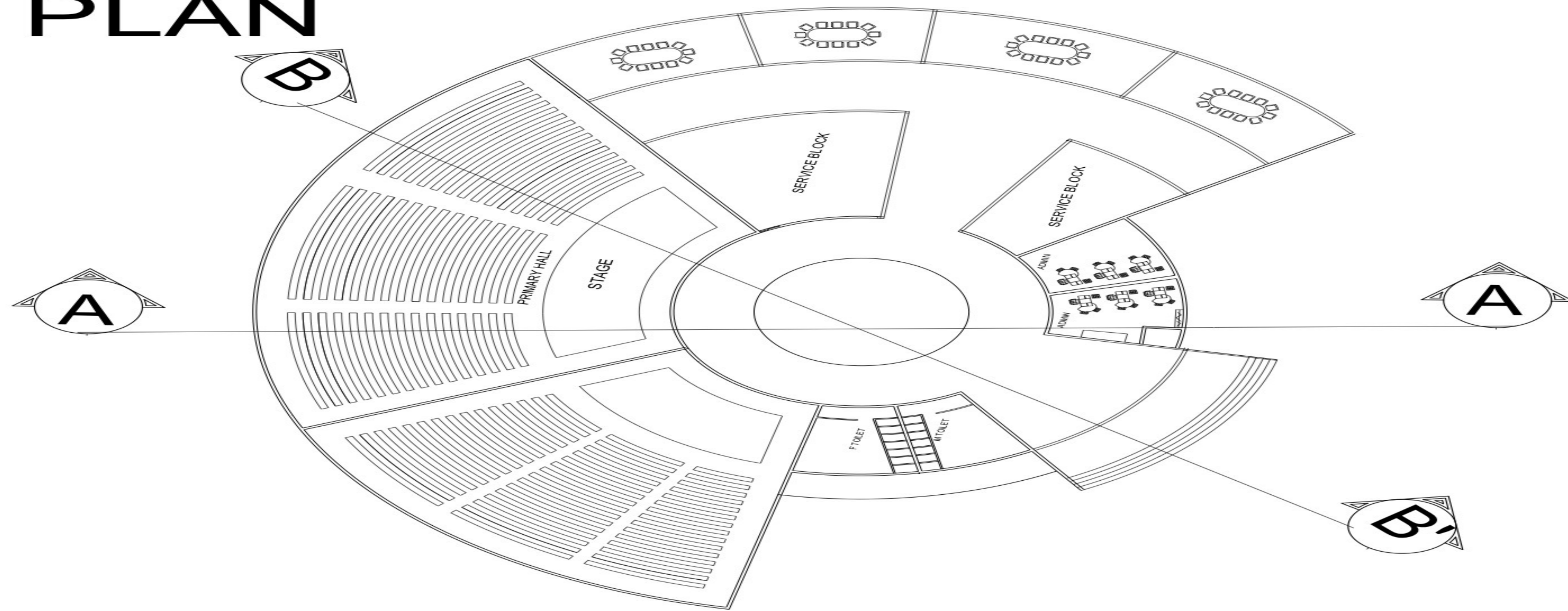


# INTERPRETATION CENTRE

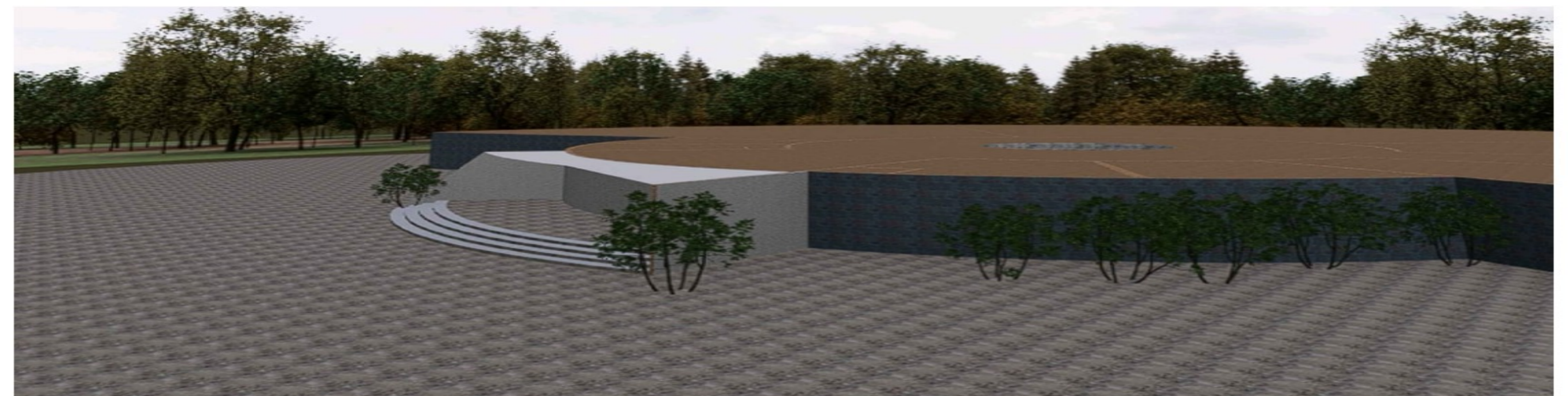
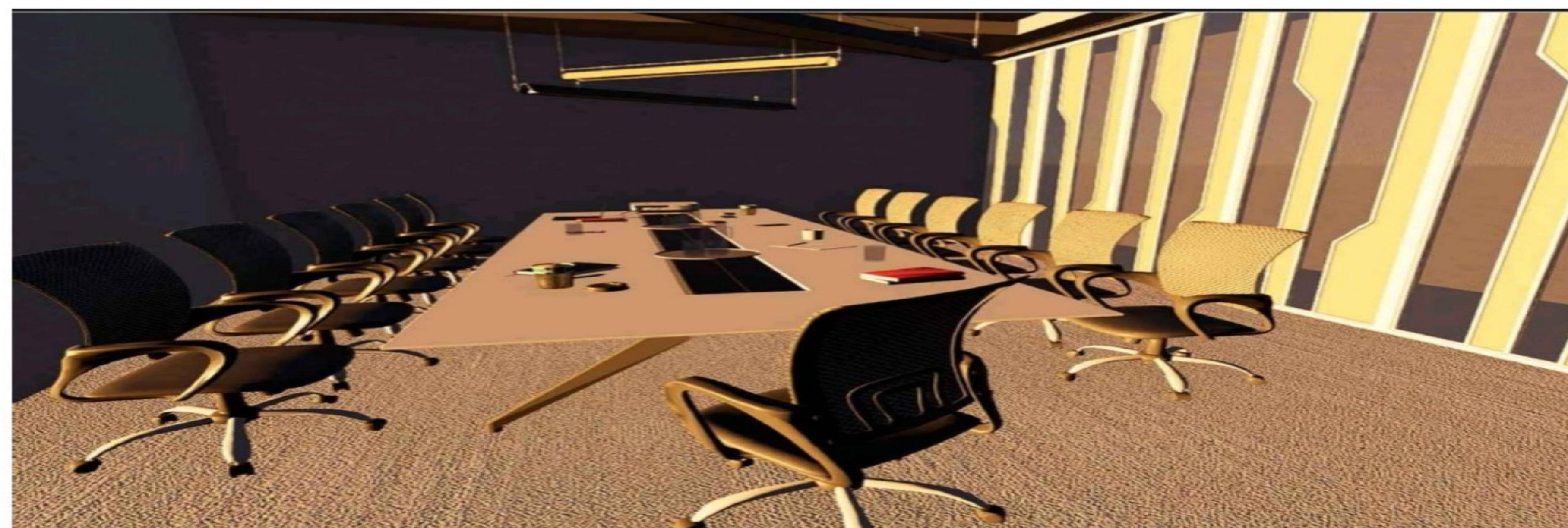
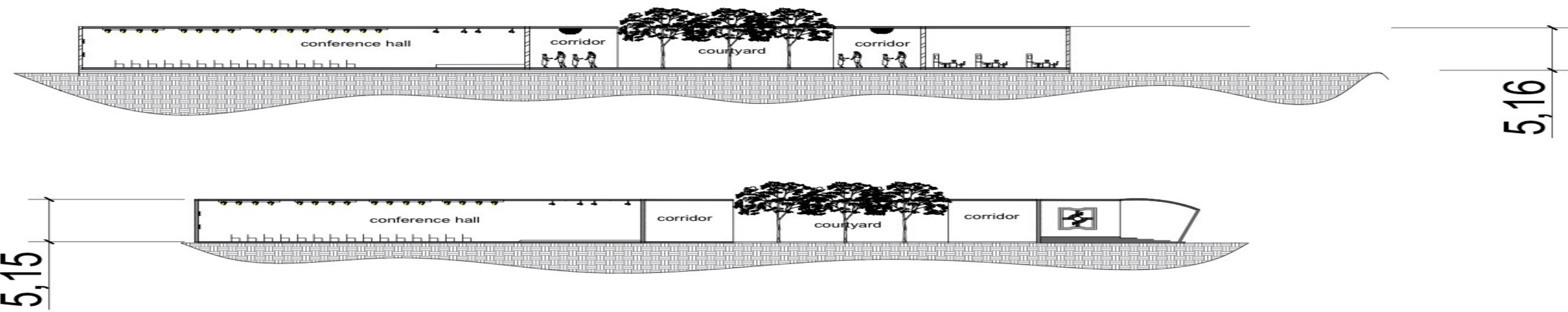
AMPHITHEATRE SCALE 1:200

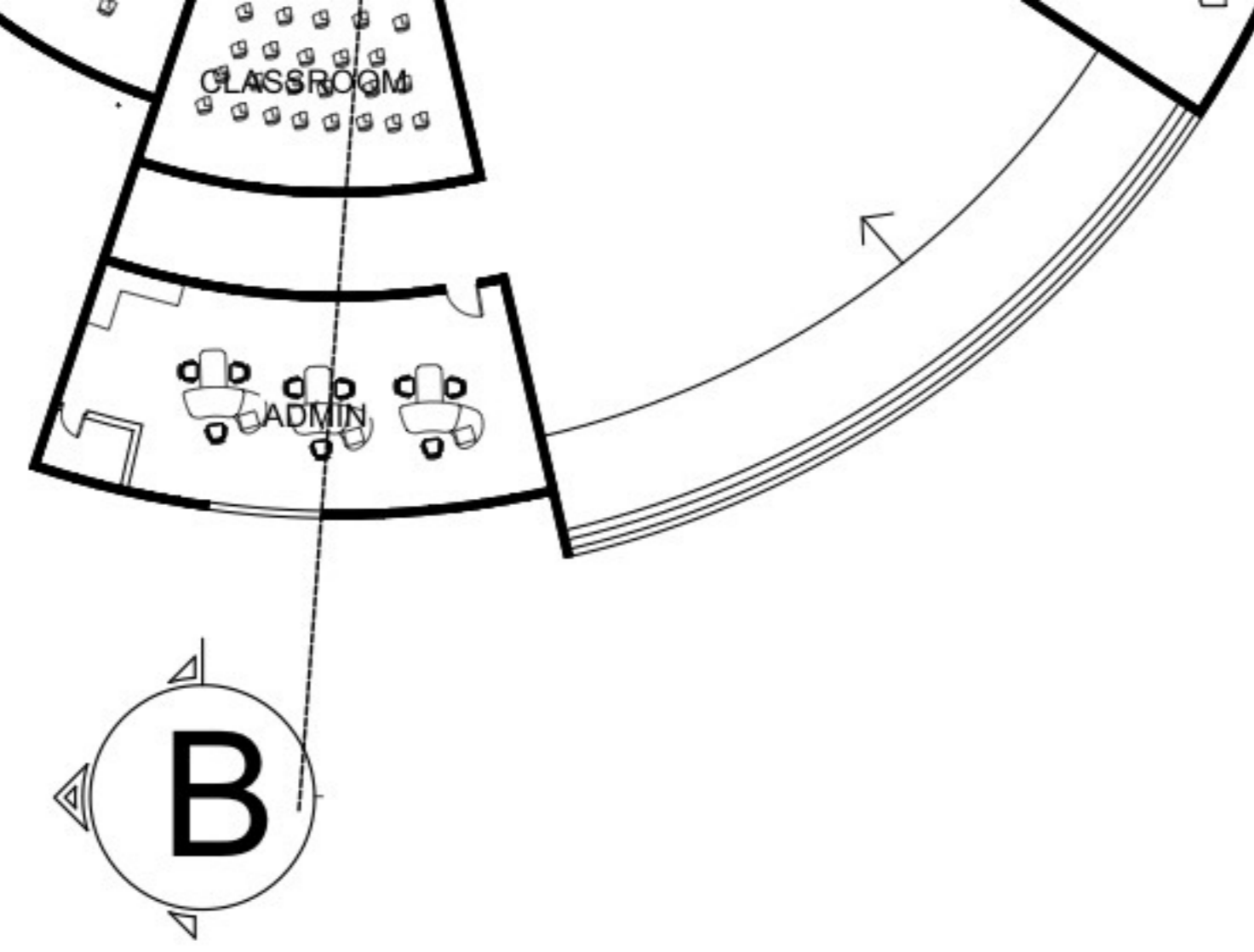


## PLAN

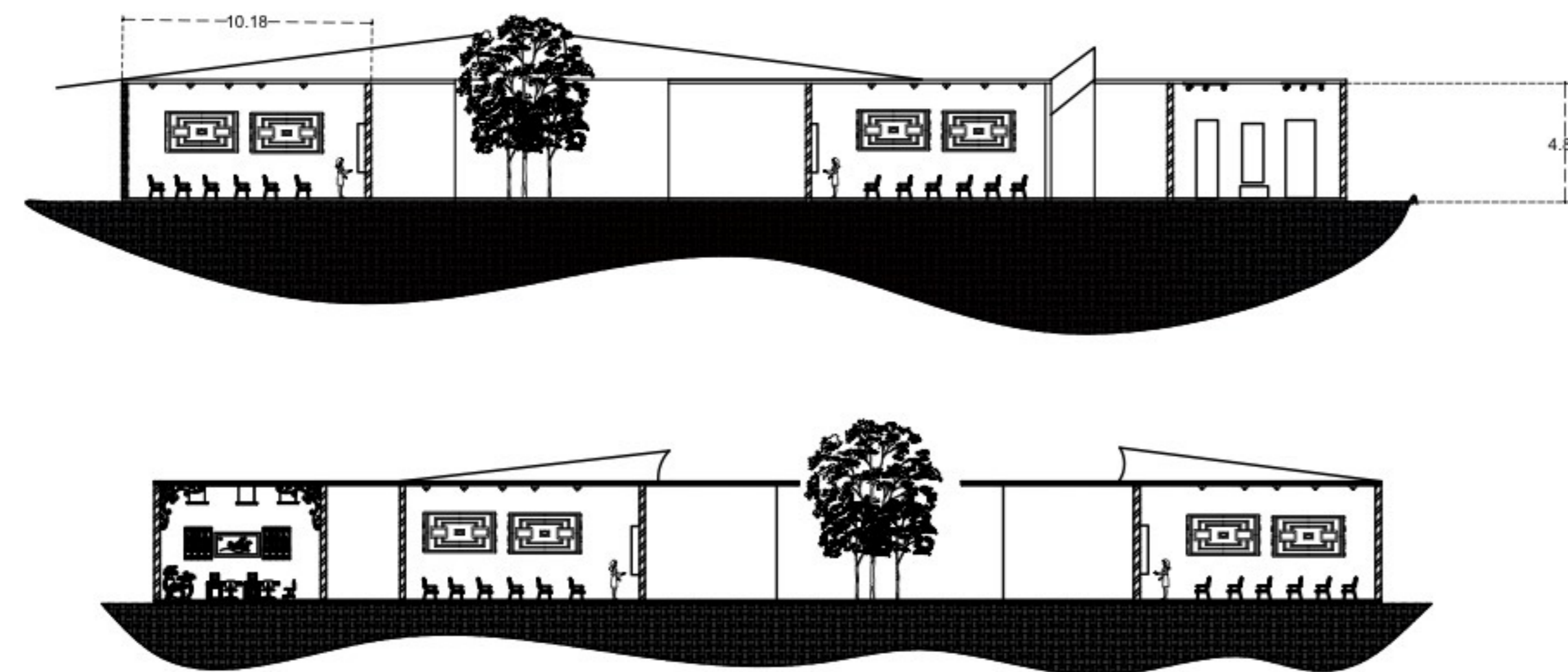


## SECTIONS





# SECTIONS



# CONCEPT

The Centrifugal Monolith

1. The Anchor (The Void)

A central "Zero Point" courtyard. It is the static heart that binds the shifting radial mass.

2. The Shift (Deconstructed Mass)

Fragmentation: Each classroom is a detached Concrete Wedge.

Fissures: 1-meter air/light gaps between wedges to "break" the circle.

Height Skew: Staggered roof heights to create a jagged, spiraling skyline.

3. The Interface (Materiality)

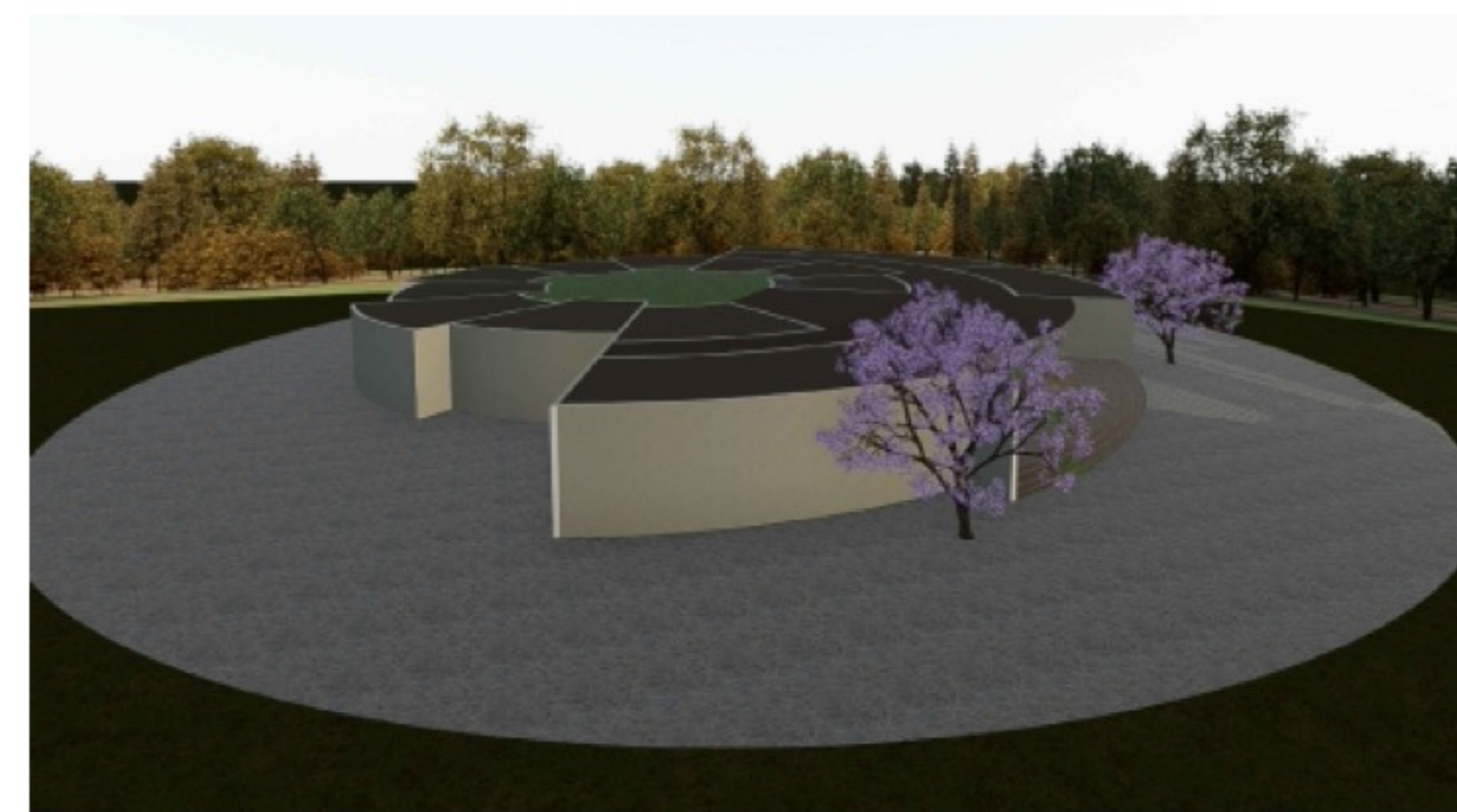
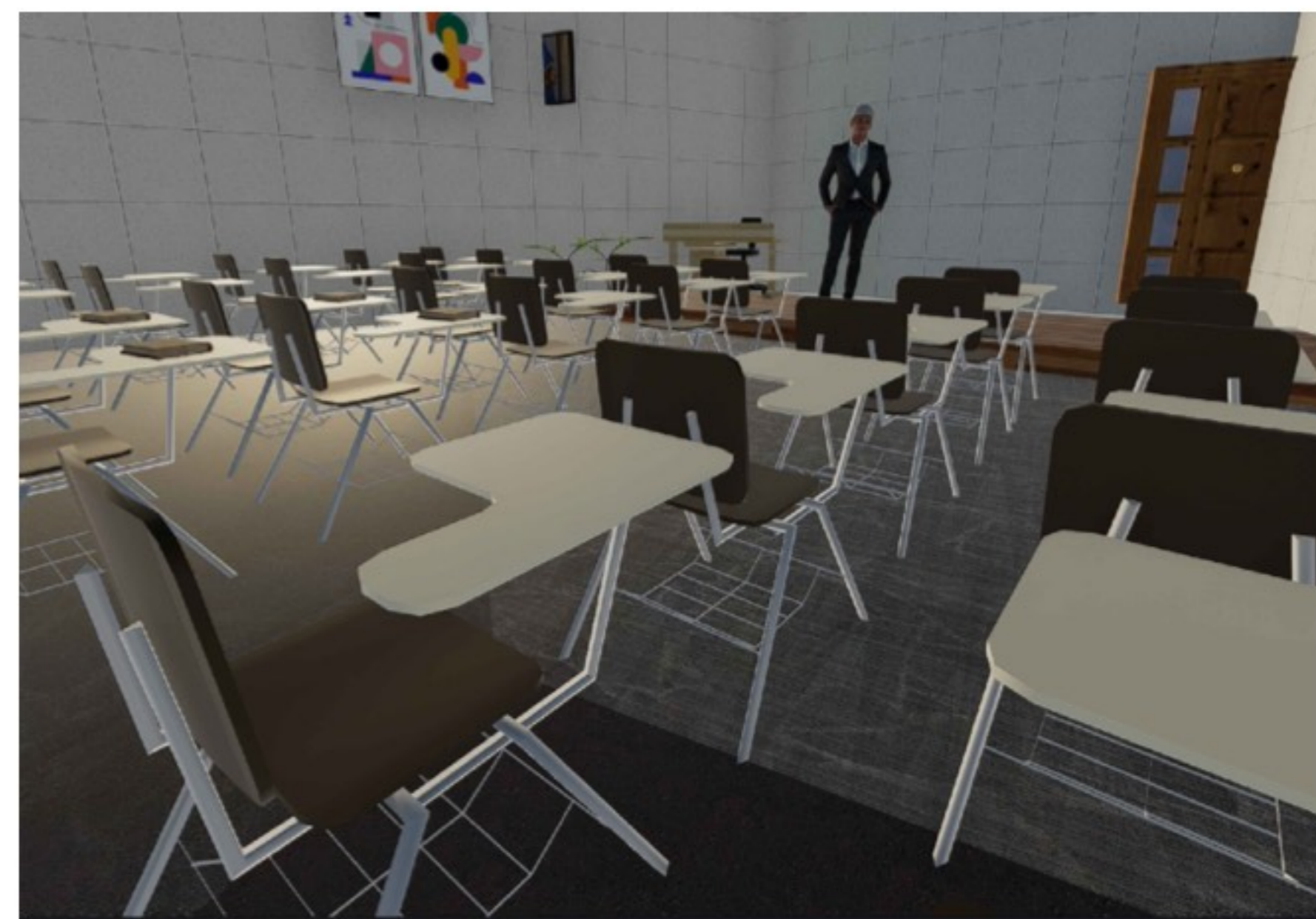
Inner: Frameless glass (Transparency).

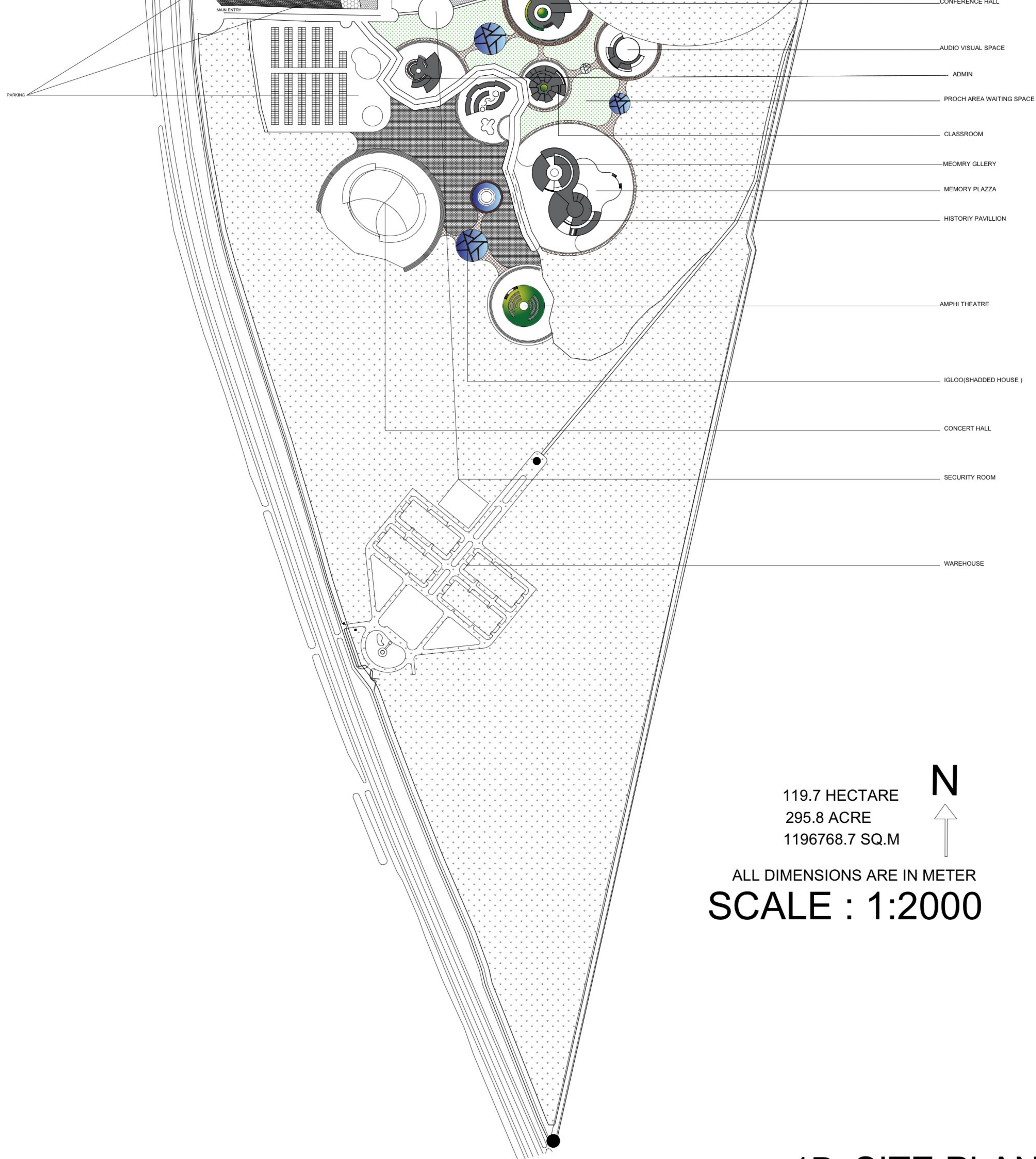
Outer: Board-marked concrete (Mass).

4. The Breath (Bioclimatic)

Venturi Effect: The radial gaps pull air into the central core.

Deep Eaves: Roofs overhanging the outer edge for self-shading.





119.7 HECTARE  
 295.8 ACRE  
 1196768.7 SQ.M

N  
 ↑

ALL DIMENSIONS ARE IN METER  
**SCALE : 1:2000**

# 1B- SITE PLAN

# “ARSENAL MEMORY PARK”

**LOCATION :** SAN MIGUEL DE TUCUMÁN  
**COUNTRY:** ARGENTINA

**SITE AREA:** 350 HECTARES (VERY LARGE SITE)  
**PREVIOUS USE:** MILITARY ARSENAL (ARMY BASE)

**Climate Type**

Subtropical Humid Climate

**Temperature**

- Summers: Hot (approx. 30–40°C)
- Winters: Mild (approx. 10–20°C)

**Average Temperature in Tucuman**



**CIRCULATION ANALYSIS**

Existing

- Internal:
- Road network (military planning)
- Pedestrian + vehicular paths

**Geographical Context**

- The site is located at the foothills of the Andes Mountains (towards the west). The site acts as a transition zone between natural terrain and urban expansion.

**HISTORICAL & CULTURAL ANALYSIS**

**Past Use**

- 1976–1978:
- Clandestine detention center
- Torture & execution happened ☒

**Key Elements**

- Galpón 9 (Main detention building)
- Mass graves (identified + unidentified)
- Barracks buildings

**Restrictions**

- 200m radius zone = Protected / sensitive area

**Concept line:**

“A site of memory, trauma, and remembrance.”

**URBAN CONTEXT ANALYSIS**

**Surroundings**

- Located in northern metropolitan region
- City has:
- Rapid growth
- Unplanned urban sprawl

**Urban Issues**

- Site is acting as a:
- Barrier / dead zone
- Disconnected land parcel



## CONCEPT : THE ANATOMY OF TRUTH

**RUPTURE AND REVELATION**

MOMENT OF HOPE 'N' FACT THAT HAS BEEN DISCLOSED

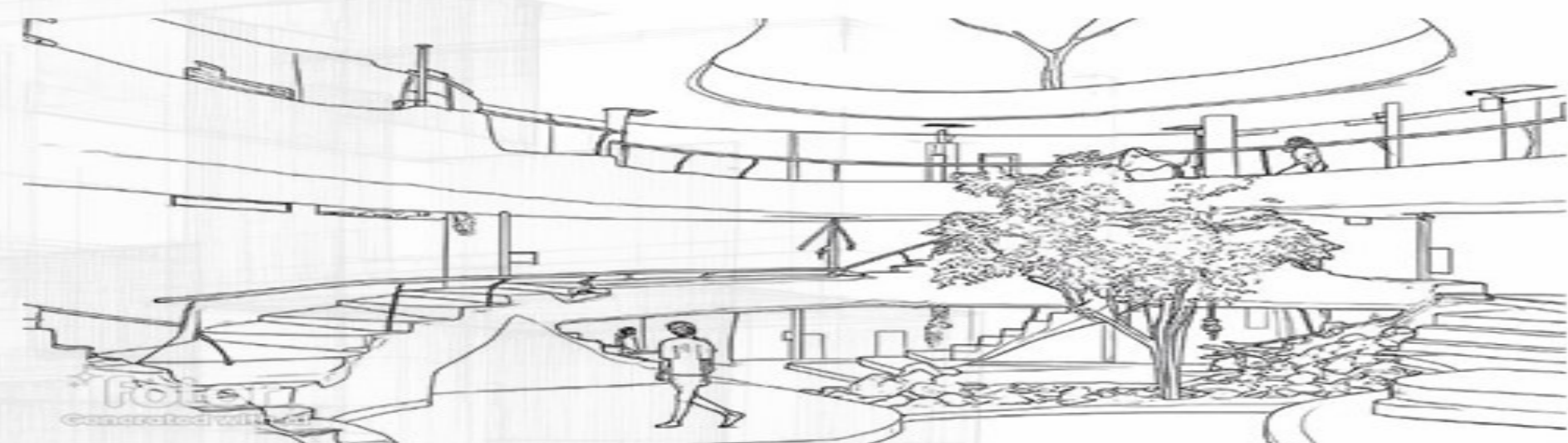
**DECONSTRUCTIVISM**

**FRAGMENTATION**

DECONSTRUCTIVISM THE ANATOMY OF TRUTH . IT USES ASCEND TO DEMAND ATTENTION, DESCENT TO HOLD SPACE FOR SORROW, AND SHATTERED ANGLES TO PHYSICALLY RECREATE THE STRUGGLE OF THE DISAPPEARED. THE RESULTING PUZZLE OF RAW CONCRETE AND LANDSCAPED NODES CREATES A SOMATIC ARCHIVE WHERE MEMORY IS NOT JUST SEEN, BUT PHYSICALLY FELT.”

### 1. THE ASCEND

BEFORE ENTERING, VISITORS MUST CLIMB UP. THIS VERTICAL MOTION REPRESENTS THE "OFFICIAL" HISTORY SEEN FROM THE OUTSIDE—THE STRUGGLE TO BE HEARD, THE PUBLIC PROTESTS, AND THE UPHILL BATTLE FOR JUSTICE.



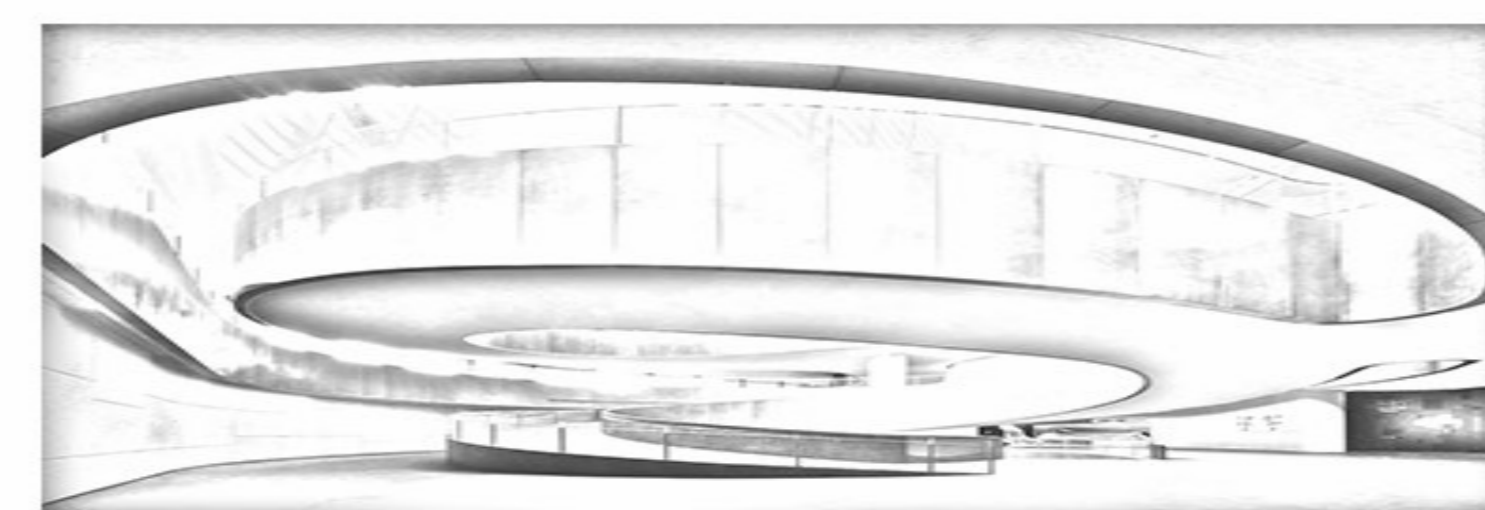
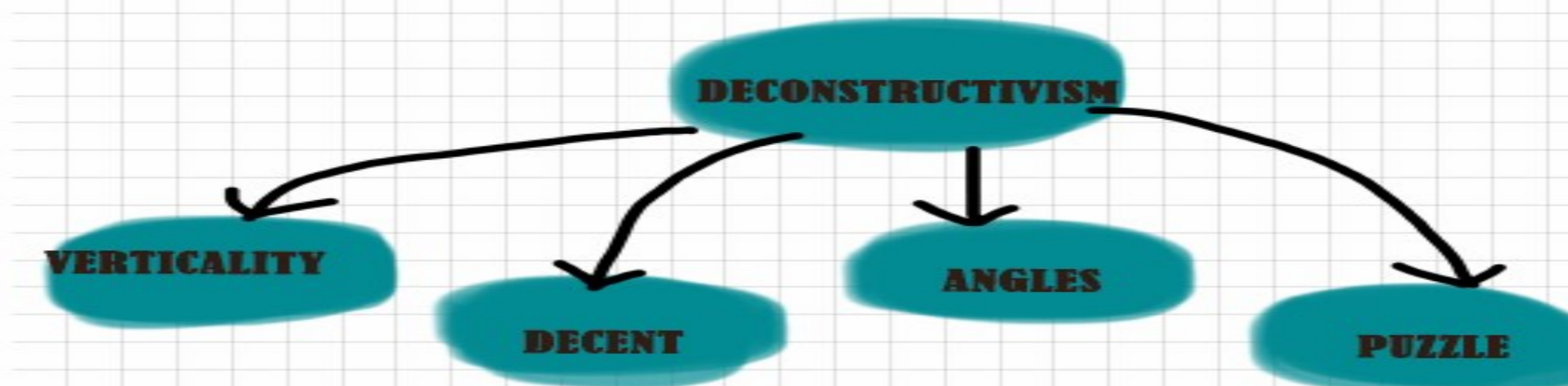
### UNDERGROUND

THE OPEN PLAZA IS A SUBMERGED RUPTURE—A CARVED VOID THAT REJECTS THE SURFACE-LEVEL NARRATIVE OF THE CITY. BY DESCENDING INTO THE EARTH, THE VISITOR ENTERS A SOMATIC FORUM WHERE THE RAW CONCRETE WALLS AND THE SOUND OF TRICKLING WATER MANIFEST THE 'ANATOMY OF TRUTH'. THIS IS THE SITE'S HYDRAULIC HEART, WHERE THE STRUGGLE FOR JUSTICE IS CAST IN STONE AND SUBMERGED IN MEMORY.

THE PROJECT UTILIZES BRUTALISM NOT AS A STYLE, BUT AS A MORAL CHOICE . BY USING RAW, EXPOSED CONCRETE AND EXPOSED INFRASTRUCTURE, THE ARCHITECTURE REFUSES TO 'HIDE' THE HISTORY OF THE ARSENAL. THE MASSIVE, MONOLITHIC PUZZLE PIECES MANIFEST A BOLD CONFIDENCE, ENSURING THAT THE VOICES OF THE DISAPPEARED ARE PERMANENTLY CAST IN AN UNYIELDING, HONEST STONE.

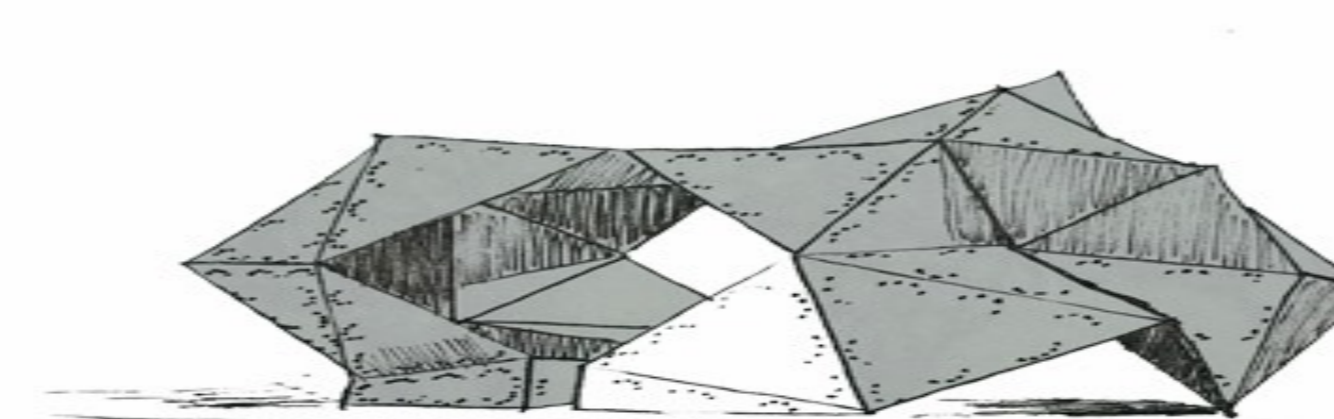


**ARCHITECTURAL STYLE**



### 2. THE DESCENT

ONCE THE PEAK OF THE CLIMB IS REACHED, THE PATH "BREAKS." THE VISITOR IS PLUNGED INTO THE UNDERGROUND/SUBMERGED LEVELS. THIS LOWERING DEPICTS THE SORROW AND THE DESCENT INTO THE "SUBTERRANEAN" SECRETS OF THE CLANDESTINE DETENTION CENTER.

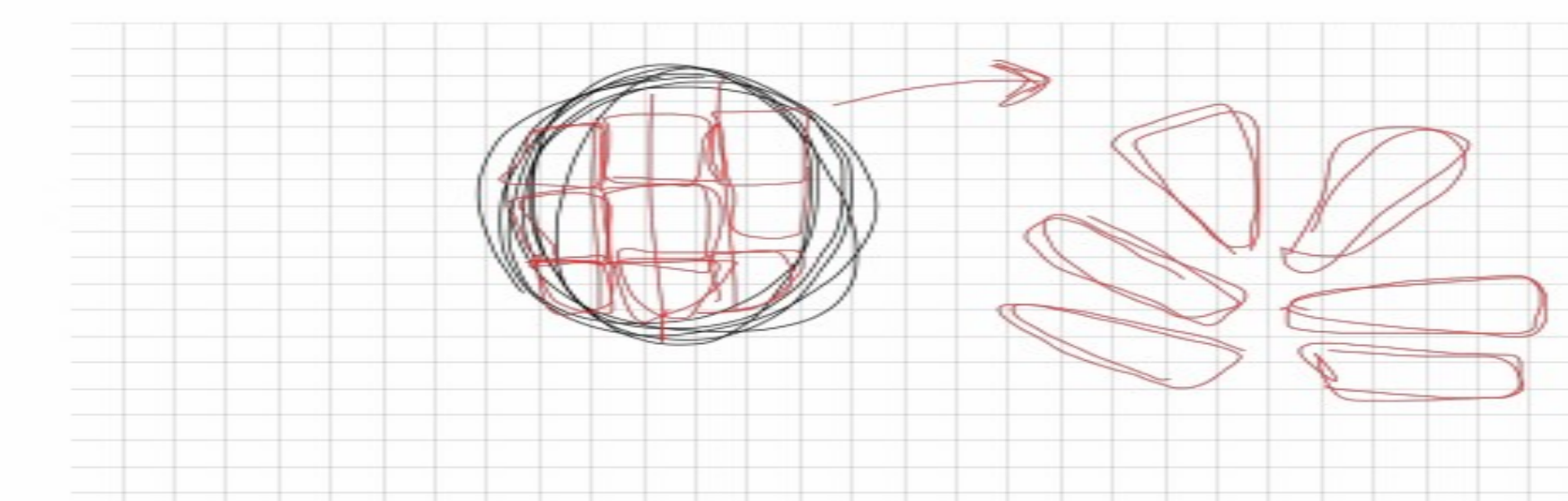


**FRAGMENTATION**

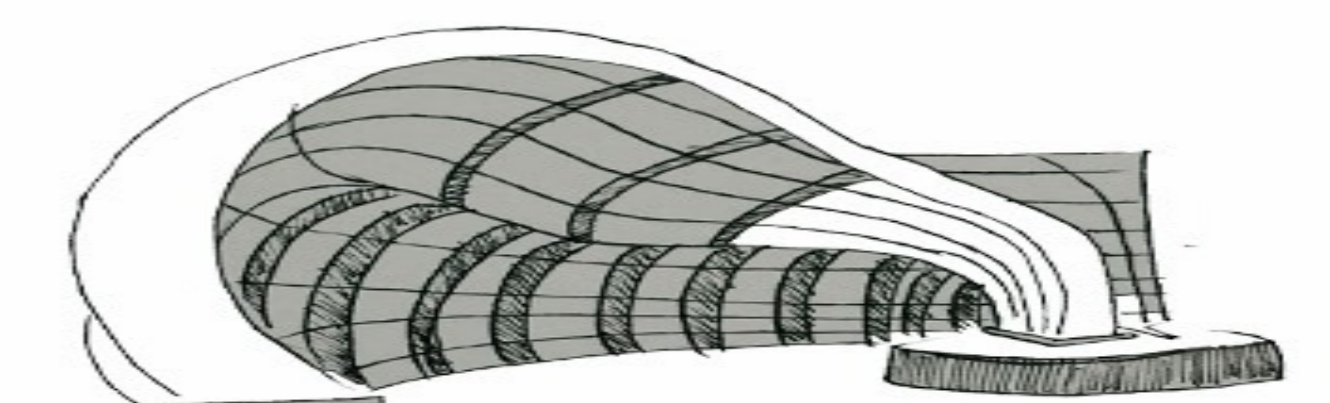
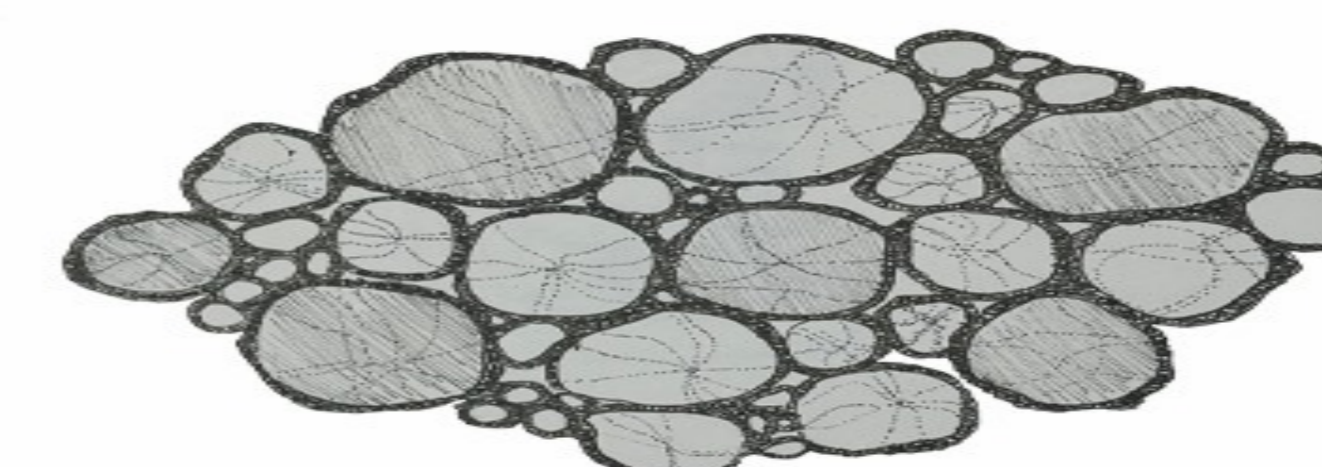
THE PLAN IS A SPATIAL EXPLOSION—A FRAGMENTED PUZZLE WHERE EACH PAVILION ACTS AS A PIECE OF ARCHITECTURAL EVIDENCE.”

“BY UTILIZING A FRAGMENTED LAYOUT, THE PROJECT REJECTS THE 'MONOLITHIC LIE' IN FAVOR OF THE 'SHATTERED TRUTH'.”

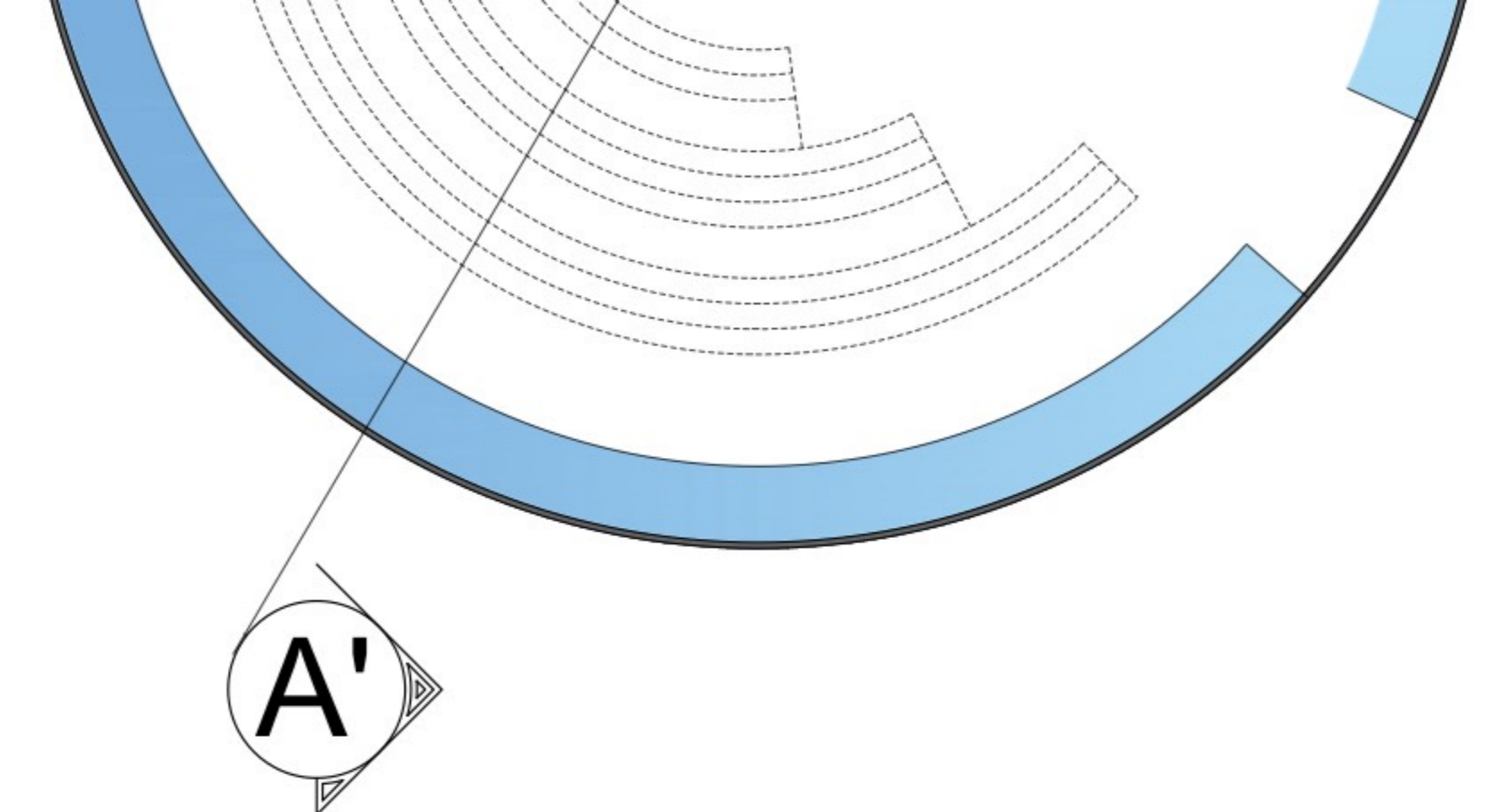
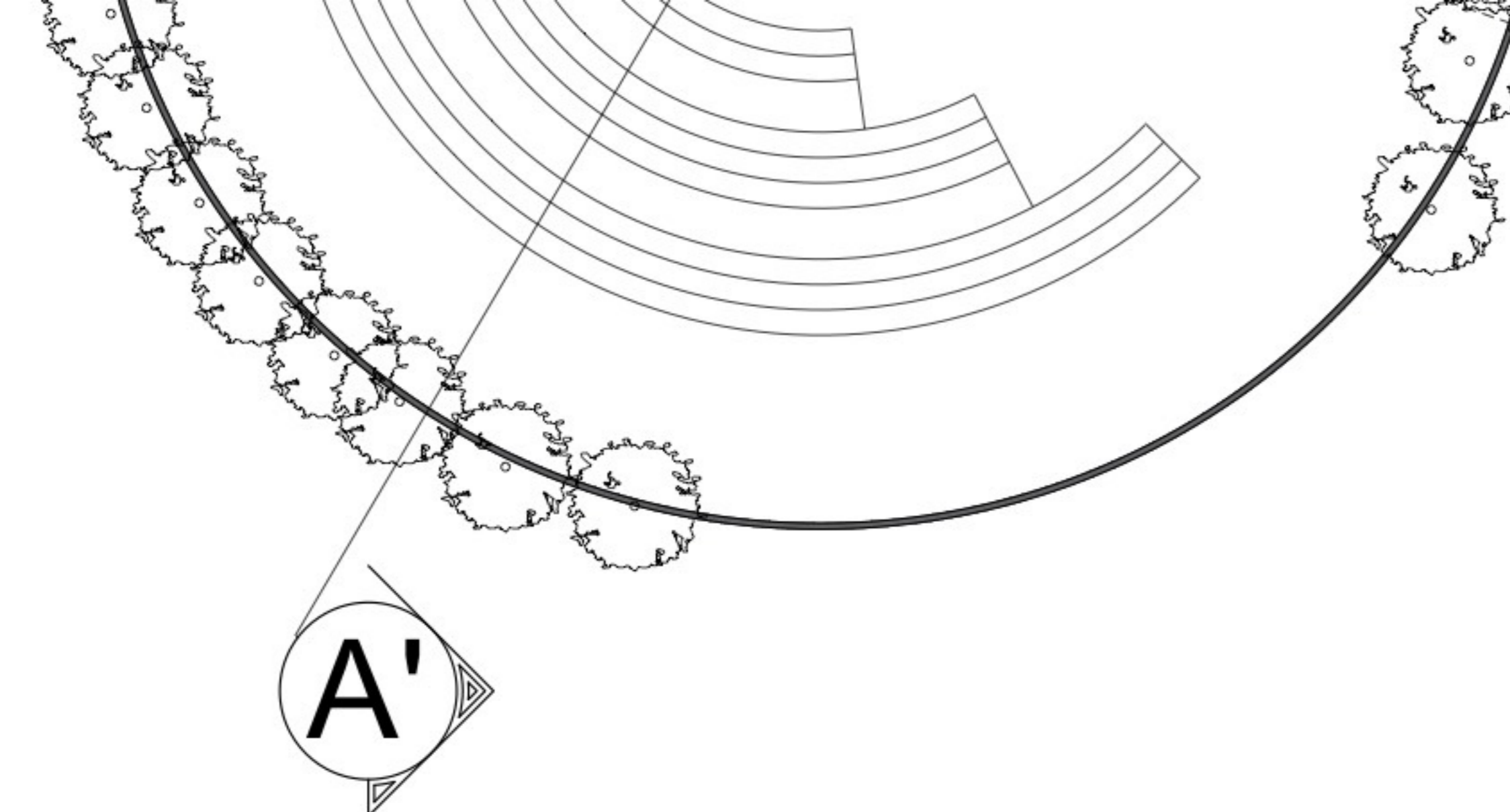
“THE INTERSTITIAL VOIDS BETWEEN THE FRAGMENTS SERVE AS THE SITE'S HYDRAULIC LUNGS, BREATHING IN THE WIND AND SOAKING UP THE MONSOONAL RAIN.



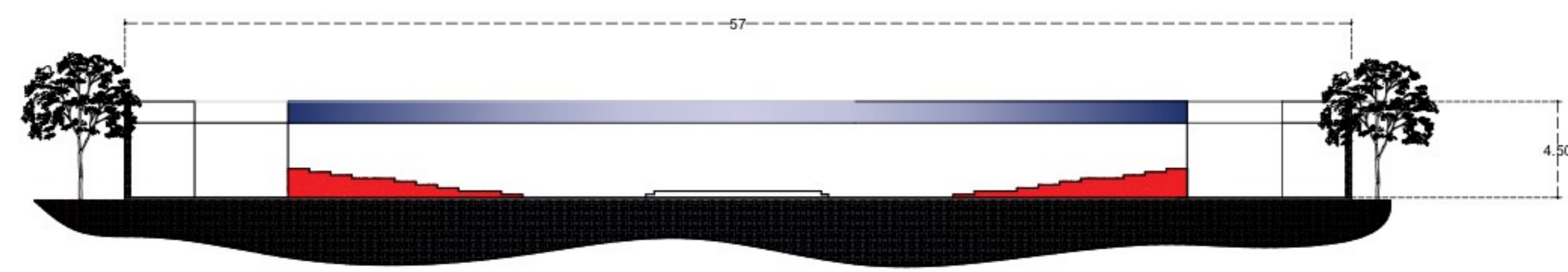
EMMOTIONS ARE SCATTERED  
DECISION ARE UNSTABLE  
THOUGHTS BEING UN PREDICTABLE



COLOUR PALLETTE ● RUSTIC RED ● BLACK GREY ● BEIGE ● RUSTIC BROWN



# SECTIONS



# CONCEPT

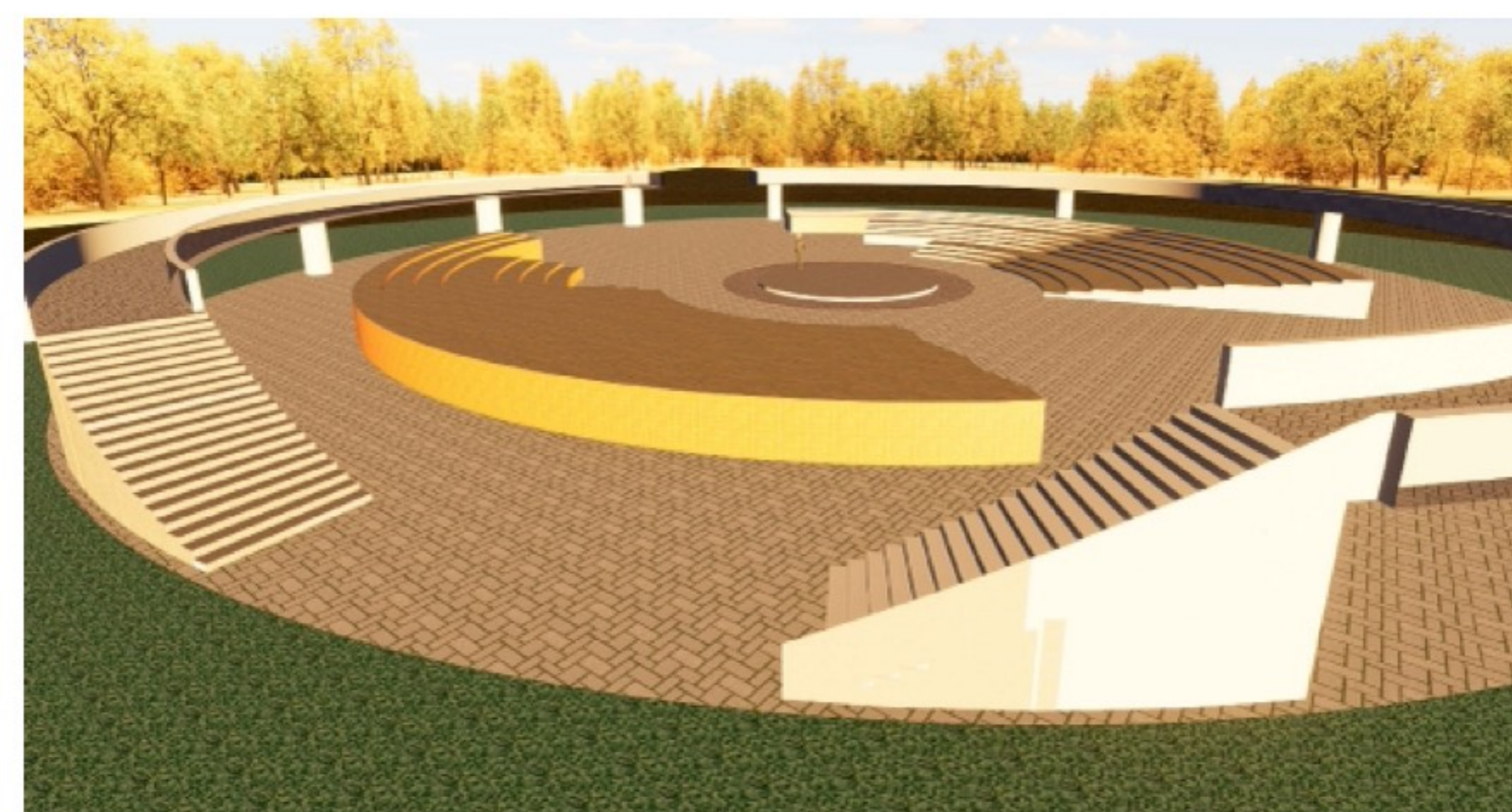
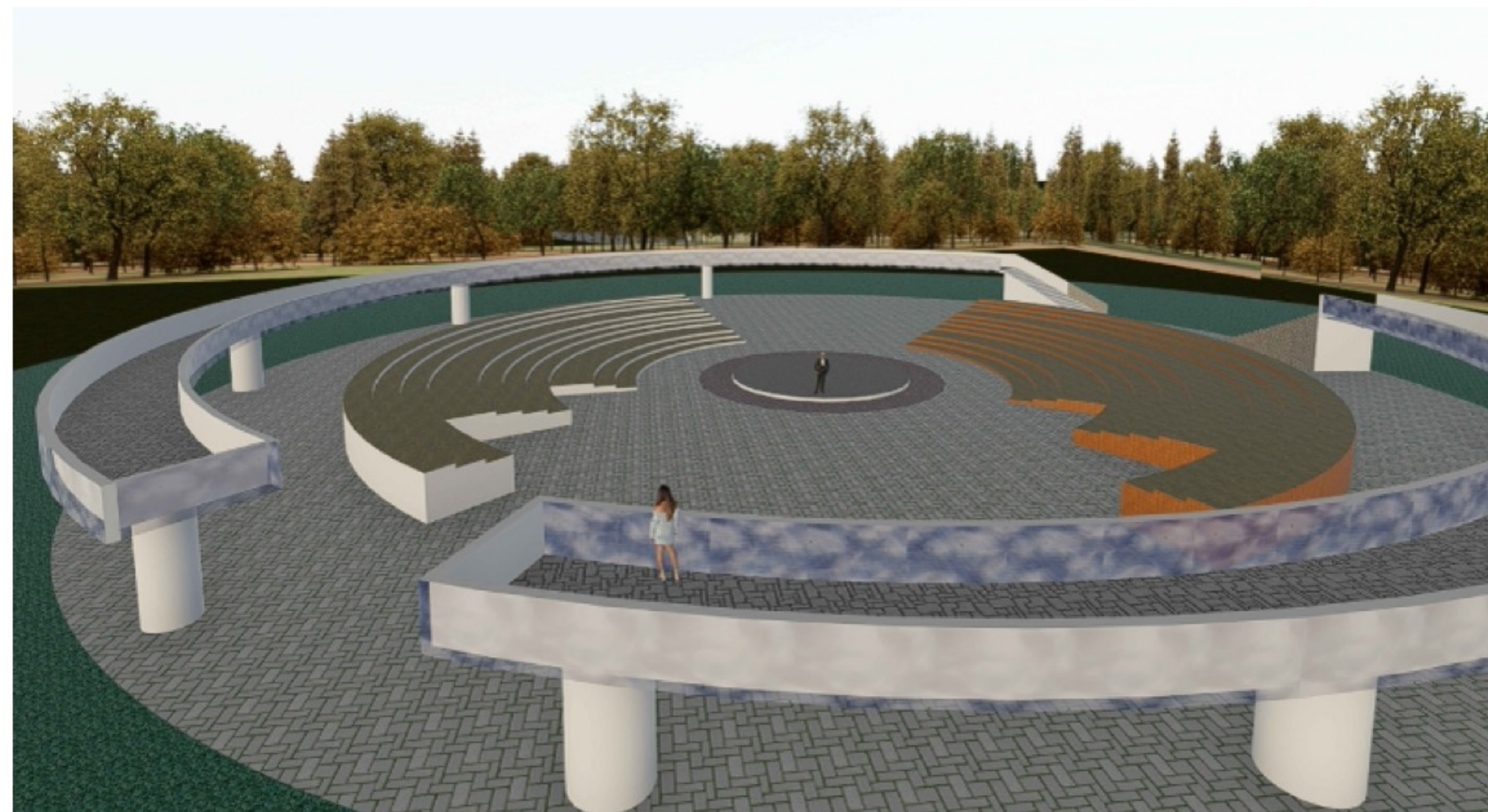
## Design Enhancement

To push this "Eye" metaphor further into your Interpretation Centre pavilions:

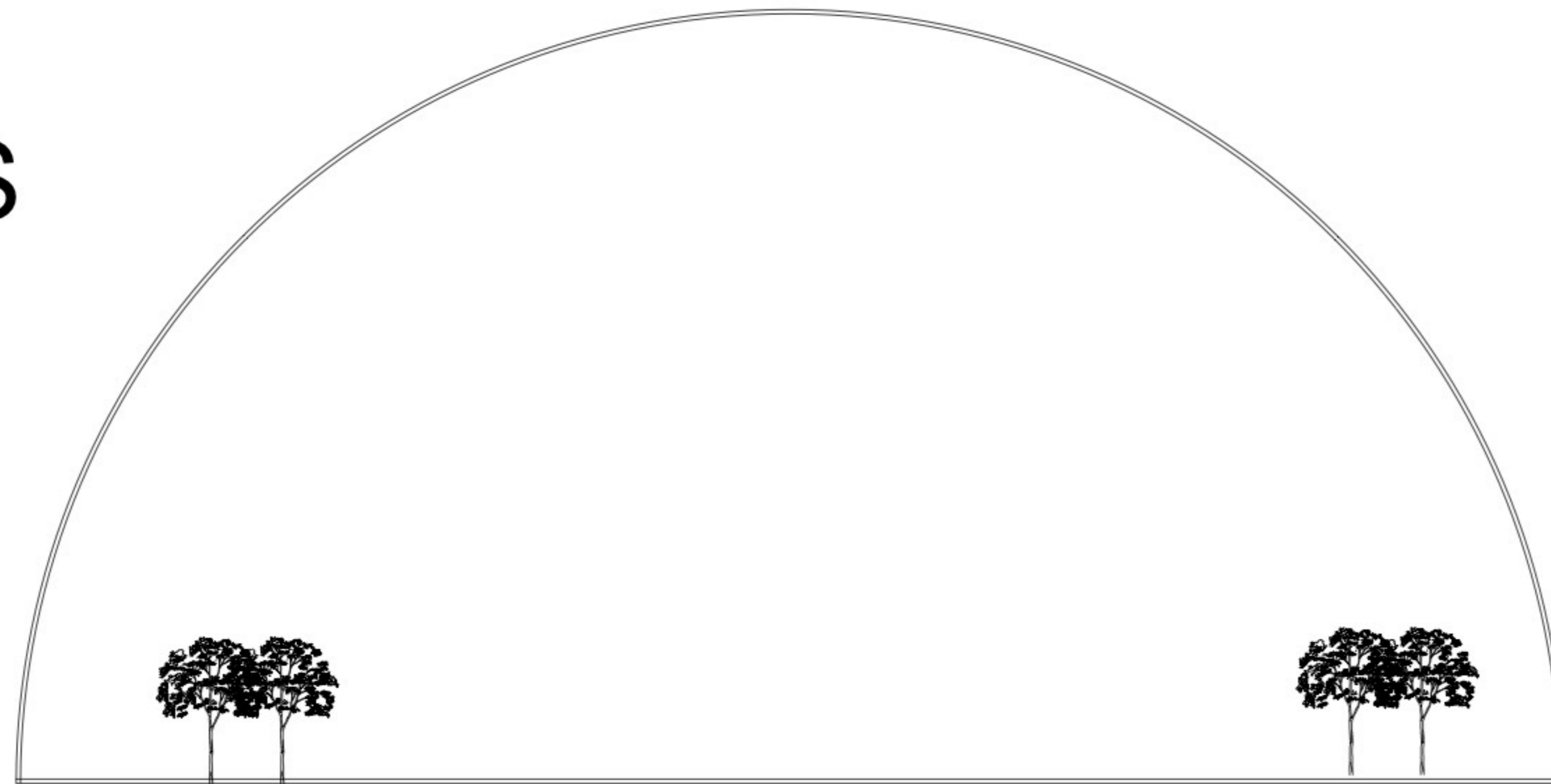
**Sightlines:** Ensure the radial balance focuses all attention on the "Pupil" (Stage).

**Elevation:** In section A-A', consider a sunken stage (an "inverted" pupil) to create a more intimate, grounded sensory experience.

**Negative Space:** The "voids" between your seating blocks allow for fragmented reality—letting the surrounding landscape bleed into the "Eye."

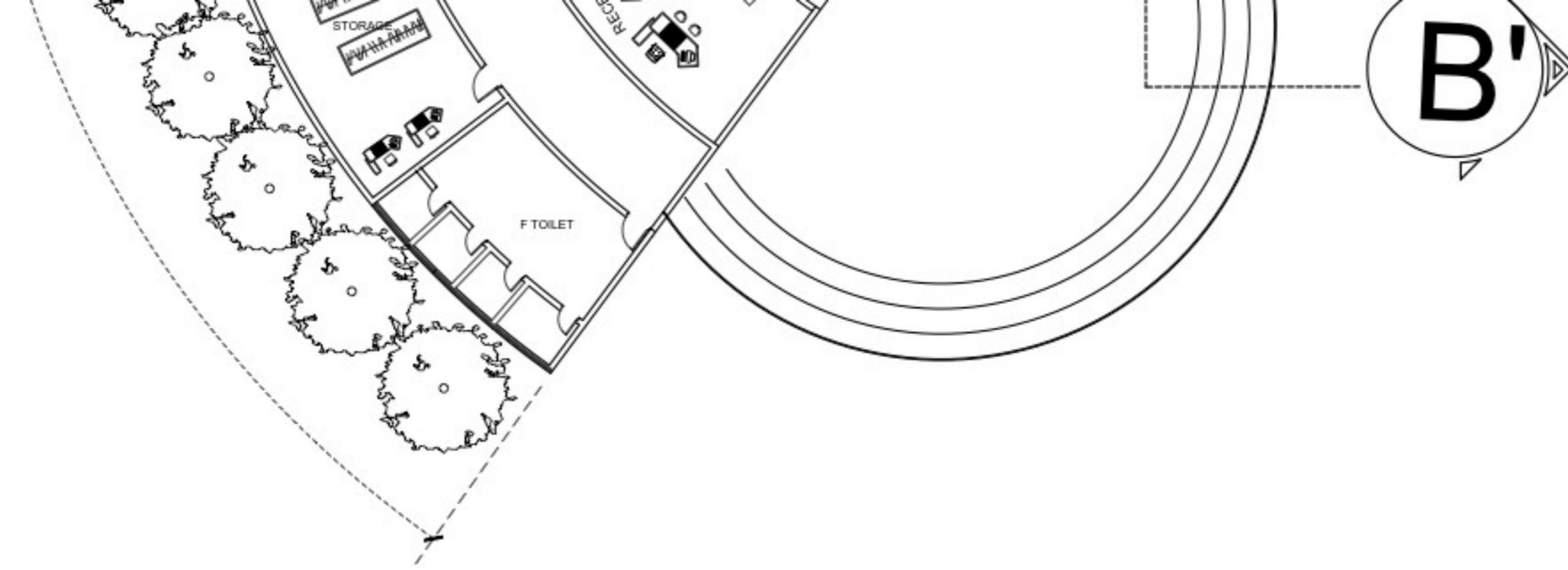


# SECTIONS

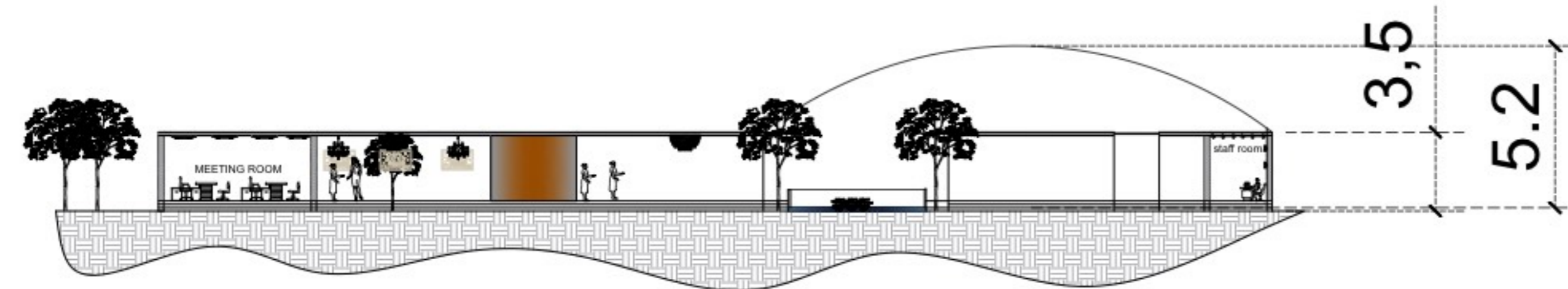


# VIEWS

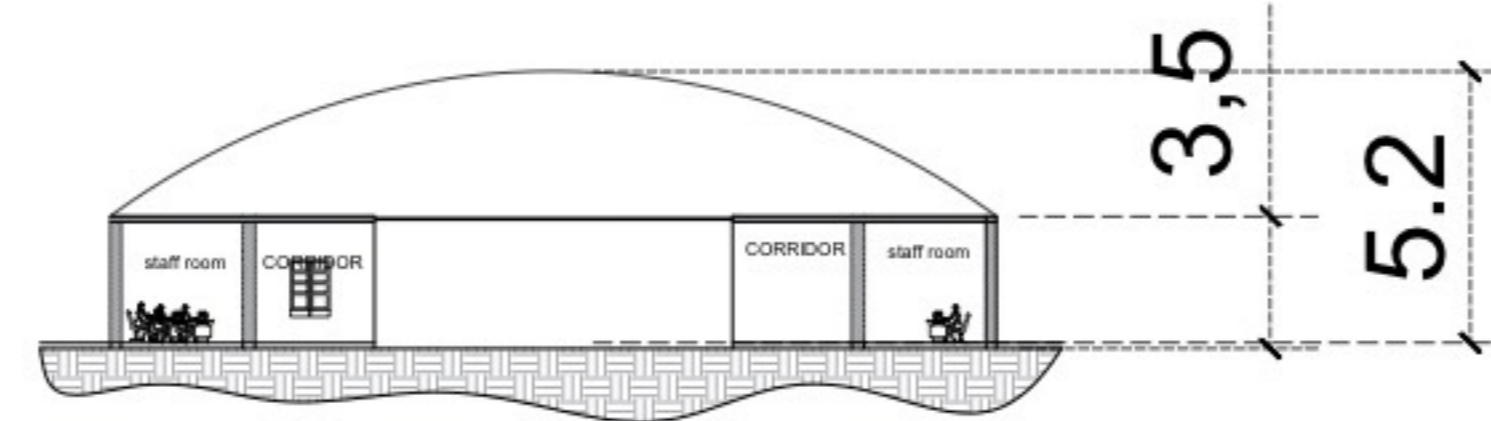




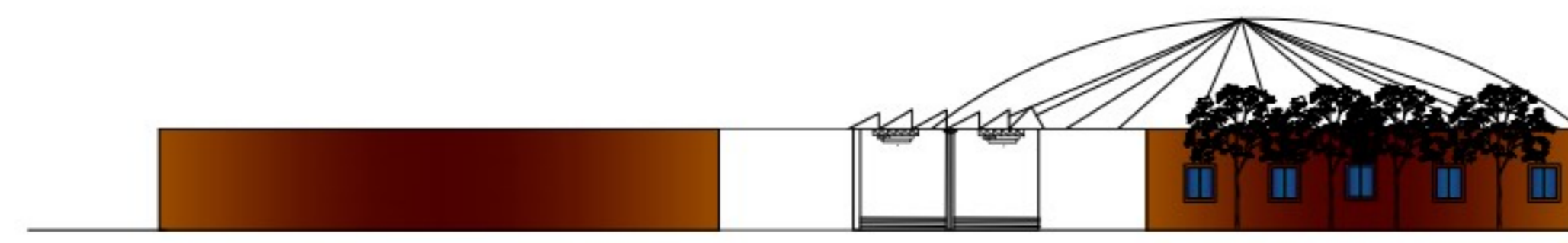
# SECTIONS



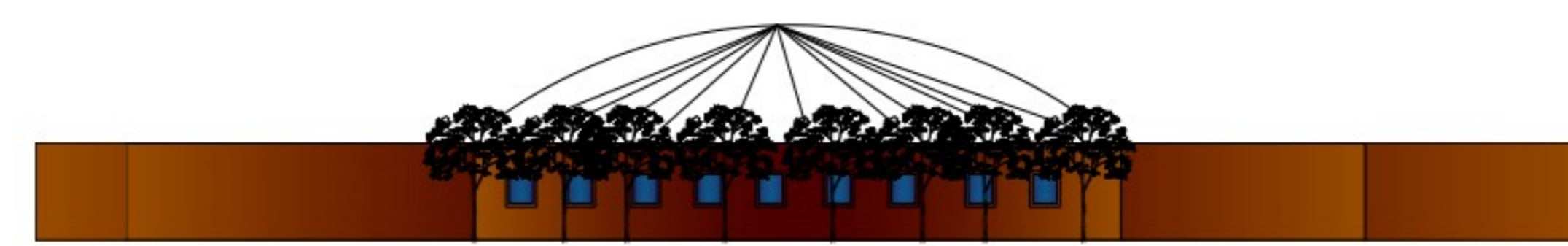
SECTION AA'



SECTION BB'



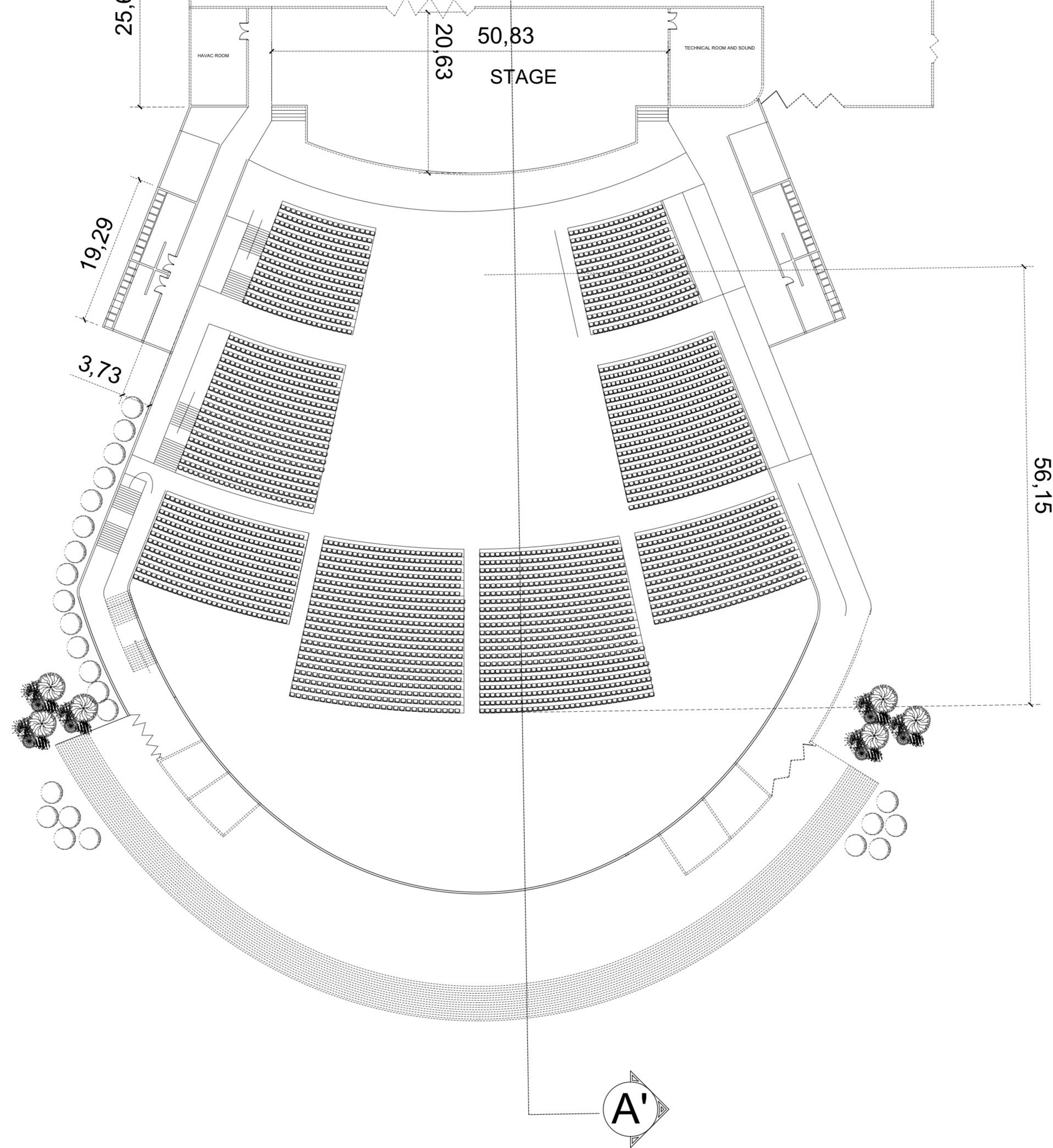
SOUTH-ELEVATION



EAST-ELEVATION

# VIEWS



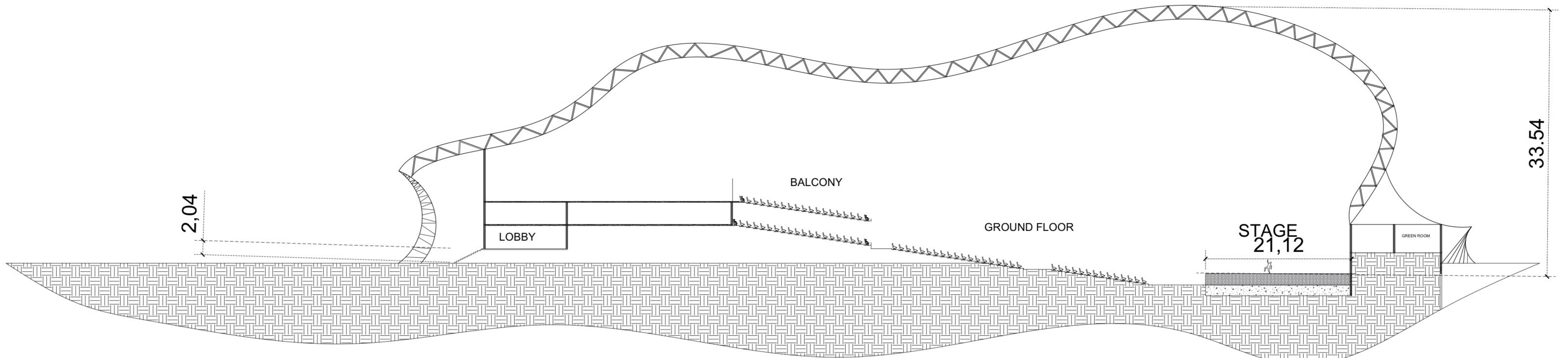


1B

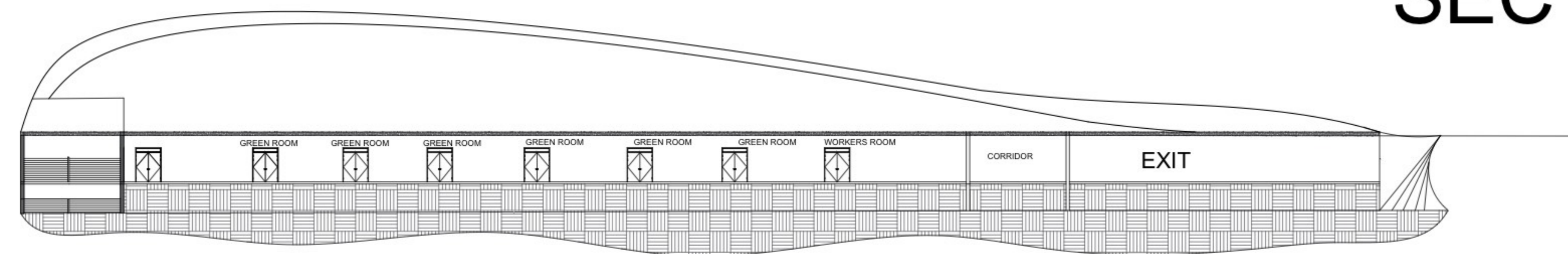
PLAN - GALLERY

SCALE 1:200

# INTERPRETATION CENTRE CONCERT HALL



SECTION AA'



SECTION BB'