



# SITE ANALYSIS

**SITE LOCATION**  
THE PROJECT SITE IS THE FORMER MIGUEL DE AZCUÉNAGA ARSENAL, LOCATED IN SAN MIGUEL DE TUUMÁN, IN ARGENTINA.

**HISTORICAL BACKGROUND**

THE SITE WAS PREVIOUSLY USED AS A MILITARY ARSENAL AND CLANDESTINE DETENTION CENTER (1976-1978) DURING THE MILITARY DICTATORSHIP.

**EXISTING HISTORIC STRUCTURE**

AN IMPORTANT PRESERVED STRUCTURE IS GALPÓN 9, WHICH WAS USED AS THE DETENTION AND TORTURE FACILITY.

**EXISTING BUILT STRUCTURES**

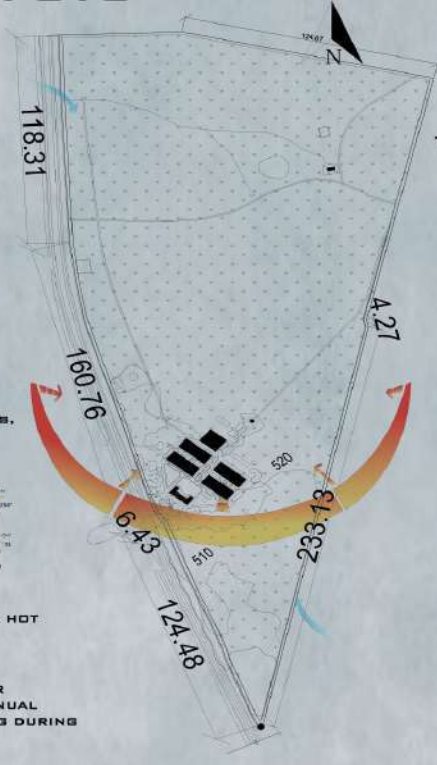
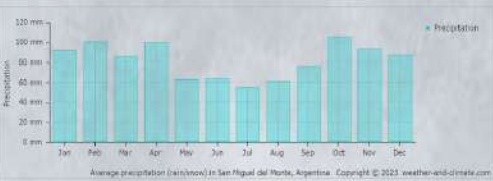
THE SITE CONTAINS PRESERVED MILITARY BUILDINGS SUCH AS BARRACKS, ADMINISTRATION BLOCKS, WAREHOUSES, WORKSHOPS, GUARD POSTS, AND A WATER TOWER



**MACRO CLIMATE**  
THE REGION HAS A HUMID SUBTROPICAL CLIMATE, WITH HOT SUMMERS AND MILD WINTERS.

**TEMPERATURE RANGE**  
SUMMER TEMPERATURES REACH 30-38°C, WHILE WINTER TEMPERATURES RANGE BETWEEN 10-22°C. RAINFALL ANNUAL RAINFALL IS AROUND 900-1200 MM, MAINLY OCCURRING DURING THE SUMMER SEASON.

**MICROCLIMATE CONDITIONS**  
THE SITE IS MOSTLY FLAT TERRAIN WITH STRONG SOLAR EXPOSURE AND POSSIBLE WATER ACCUMULATION DURING HEAVY RAINS.



**TOTAL OPEN AREA**  
26,800 SQM  
**TOTAL COVERED AREA**  
13,500 SQM  
**TOTAL**  
40,300 SQM

**LANDSCAPE CHARACTER**

THE SITE HAS LARGE OPEN AREAS WITH CLUSTERS OF TREES, MAKING IT SUITABLE FOR PARK AND ECOLOGICAL RESTORATION.

**THE CORE MISSION**

**PRESERVING HISTORY**

THE PROJECT MUST BE AROUND THE ORIGINAL REMAINS OF THE CLANDESTINE DETENTION CENTER.

**MUST-PROTECT ZONES**

YOU CANNOT CHANGE OR DESTROY THE BAR-RACKS, GALPÓN 9 (DETAINEE AREA), OR THE MASS GRAVE SITE.

**OPTIONAL RECONSTRUCTION**

YOU HAVE THE FREEDOM TO "RE-BUILD" LOST ELEMENTS LIKE GUARD POSTS, TORTURE ROOMS, OR FENCES TO SHOW HOW THE ORIGINAL FACILITY FUNCTIONED

**SURROUNDING LAND USE**

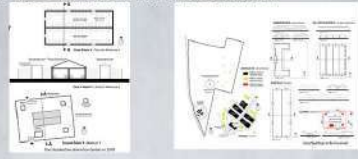
THE SURROUNDING LAND USES INCLUDE RESIDENTIAL NEIGHBOURHOODS, INDUSTRIAL AREAS, AGRICULTURAL LAND, AND DEVELOPING URBAN SETTLEMENTS.

**EXISTING VEGETATION**

THE SITE HAS NATURAL VEGETATION CONSISTING OF GRASSLANDS AND SCATTERED NATIVE TREES DUE TO LONG-TERM ABANDONMENT.

INTERPRETATION CENTER | TUCUMÁN, ARGENTINA

- Hot-Humid Climate: High temperature and humidity
- 38°C Summer Temp: Average max 30-38°C min winter = 5-20°C
- High Humidity: 60-90% throughout year
- Cross Ventilation: Moderate winds 5-15 m/s



# CONCEPT

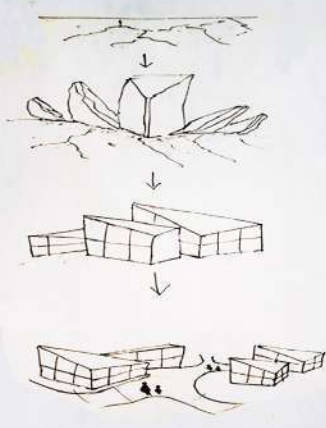
## FRAGMENTS OF MEMORY

FRAGMENTS OF MEMORY REPRESENTS FRAGMENTS OF HISTORY EMERGING FROM THE LANDSCAPE.

THE ARCHITECTURE IS COMPOSED OF ANGULAR BLOCKS THAT APPEAR LIKE SHARDS RISING FROM THE EARTH, SYMBOLIZING PIECES OF MEMORY SCATTERED ACROSS TIME.

EACH BLOCKS HOUSES A DIFFERENT NARRATIVE COMPONENT, WHILE THE CENTRAL MEMORY GARDEN ACTS AS A CONTEMPLATIVE SPACE WHERE VISITORS RECONNECT THESE FRAGMENTS INTO A COLLECTIVE UNDERSTANDING OF THE PAST.

THE PROJECT TRANSFORMS THE SITE INTO A JOURNEY OF REFLECTION, WHERE ARCHITECTURE, LANDSCAPE, AND MOVEMENT TOGETHER CREATE AN IMMERSIVE INTERPRETATION EXPERIENCE.



Summary of Suggested Requirements Program

INTERPRETATION CENTER	Covered Area (m <sup>2</sup> )	Open area (m <sup>2</sup> )
1. Administration	8,000	
2. Historical Exhibition Pavilion	8,500	
3. Memorial Art Gallery	3,500	
4. Interpretive Audiovisual Showrooms	500	
5. Memory Plaza		2,500
6. Commercial Promotions and Services	1,000	
7. Parking		3,500
<b>INTERPRETATION CENTER COMPLEMENT</b>		
8. Cemetery/Restful Hill	4,000	
9. Classroom Complex	3,500	
10. Conference Room Complex	500	
11. Amphitheater	2,500	1,000
12. Shade House (at the discretion of the contestant)		
13. Parking		20,000
<b>Total</b>	<b>13,500</b>	<b>26,800</b>

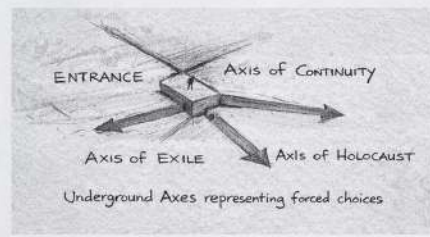
**DESIGN PHILOSOPHY**

THE DESIGN IS GUIDED BY THREE MAIN IDEAS:

**FRAGMENTATION**  
HISTORY IS NOT EXPERIENCED AS A SINGLE NARRATIVE BUT AS FRAGMENTED MEMORIES. THE SEPARATE BUILDINGS REPRESENT THESE PIECES.

**EMERGENCE**  
THE ANGULAR FORMS APPEAR TO EMERGE FROM THE GROUND, SYMBOLIZING BURIED STORIES RESURFACING THROUGH INTERPRETATION.

**REFLECTION**  
THE CENTRAL MEMORY GARDEN OFFERS A QUIET SPACE FOR CONTEMPLATION, ALLOWING VISITORS TO PAUSE AND ABSORB THE NARRATIVES PRESENTED.



**SUSTAINABILITY CONSIDERATIONS**

- PASSIVE DAYLIGHT THROUGH ANGLED ROOF OPENINGS
- NATURAL VENTILATION THROUGH PAVILION SPACING
- LANDSCAPE SHADING FOR THERMAL COMFORT
- RAINWATER COLLECTION INTEGRATED IN LANDSCAPE FEATURES



**MATERIALS**

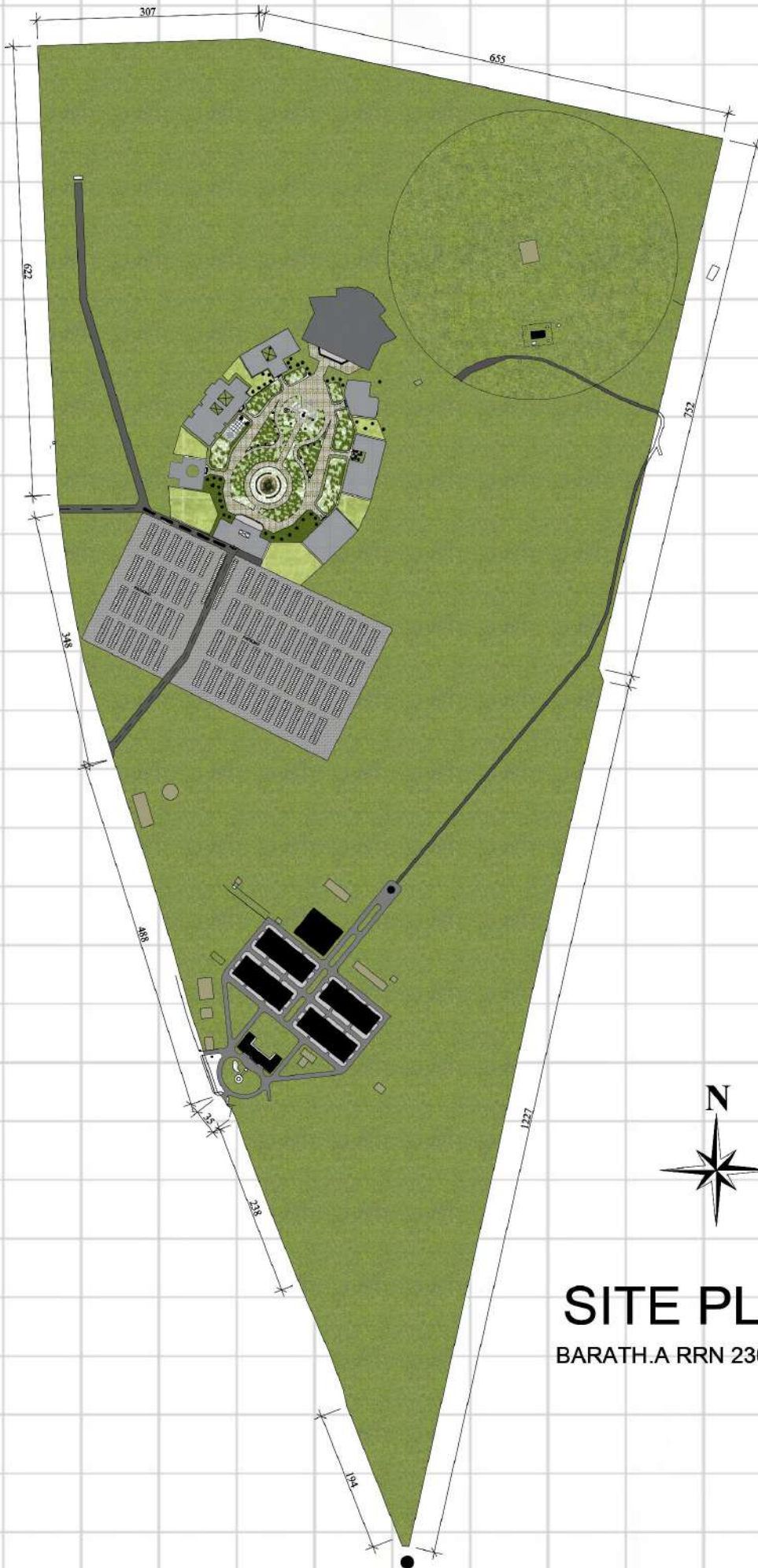


**VISITOR EXPERIENCE JOURNEY**

- ARRIVAL**  
VISITORS ENTER THROUGH THE ORIENTATION PAVILION AND RECEIVE AN INTRODUCTION TO THE HISTORICAL NARRATIVE.
- EXPLORATION**  
VISITORS MOVE THROUGH THE INDIVIDUAL PAVILIONS, EACH PRESENTING A DIFFERENT LAYER OF INTERPRETATION.
- REFLECTION**  
THE CENTRAL MEMORY GARDEN PROVIDES A CONTEMPLATIVE PAUSE BETWEEN EXPERIENCES.
- DEPARTURE**  
VISITORS EXIT WITH A DEEPER UNDERSTANDING OF THE HISTORICAL NARRATIVE.

35178

# INTERPRETATION CENTER- ARSENAL, ARGENTINA

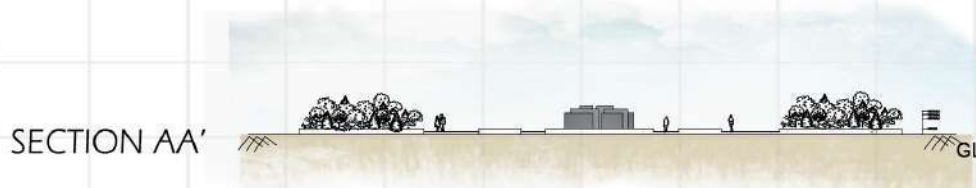
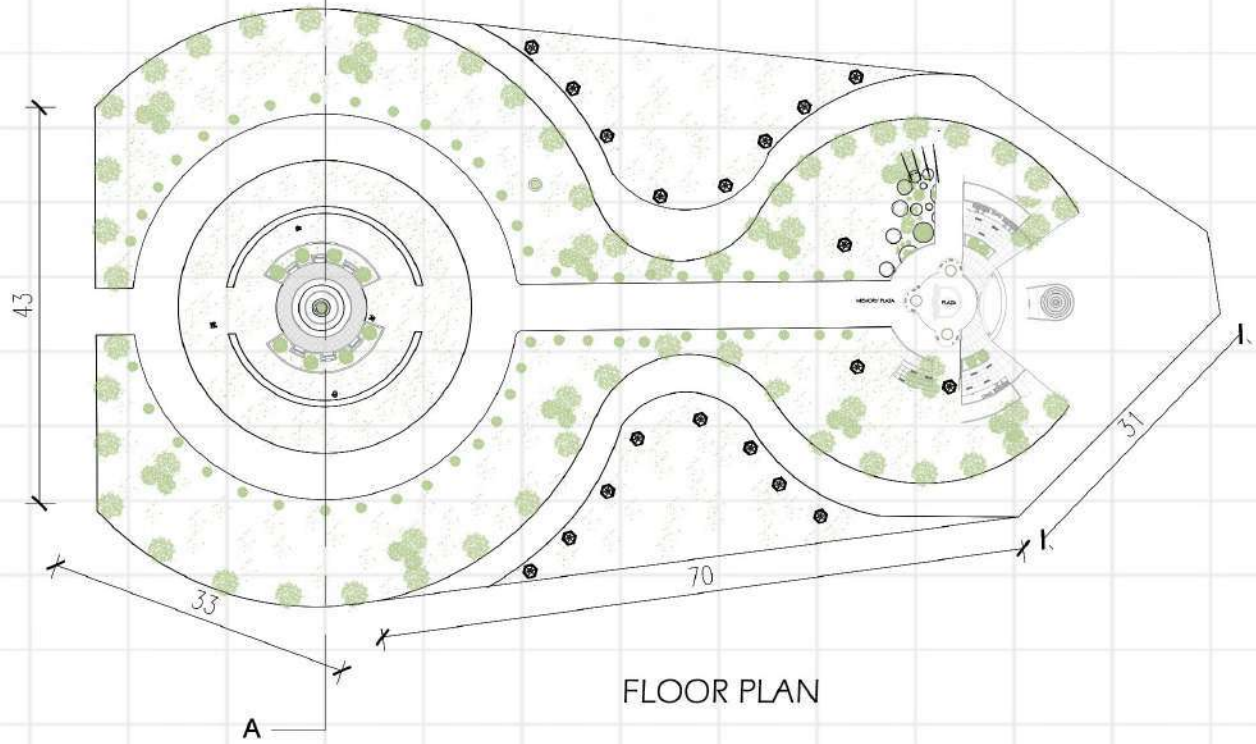


295.8 ACRE  
1196768.7 SQ.M  
119.7 HECTARE

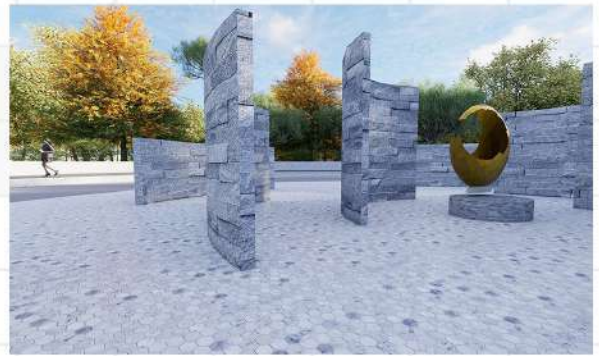
## SITE PLAN SCALE 1:2000M

BARATH.A RRN 230101601006

# INTERPRETATION CENTER DESIGN



FOUNTAIN VIEW



PLAZA VIEW



WALKPATH VIEW



SEATING VIEW

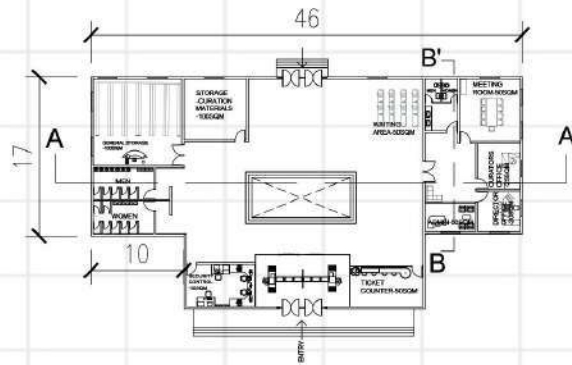
SCALE 1:200

06

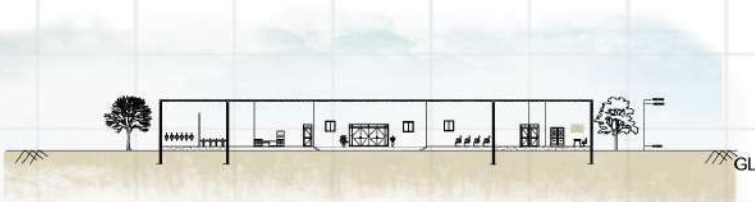
MEMORY PLAZA BLOCK

NAME:BARATH  
RRN:230101601006

# INTERPRETATION CENTER DESIGN



FLOOR PLAN



SECTION AA'



SECTION BB'



ENTRY VIEW



COURTYARD VIEW



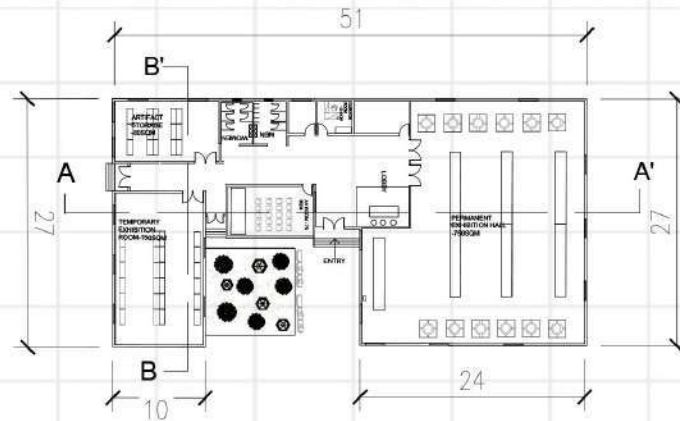
RECEPTION VIEW



LOBBY VIEW

SCALE 1:200

# INTERPRETATION CENTER DESIGN



FLOOR PLAN



SECTION AA'



SECTION BB'



ENTRY VIEW



EXHIBITION VIEW



DISPLAY VIEW

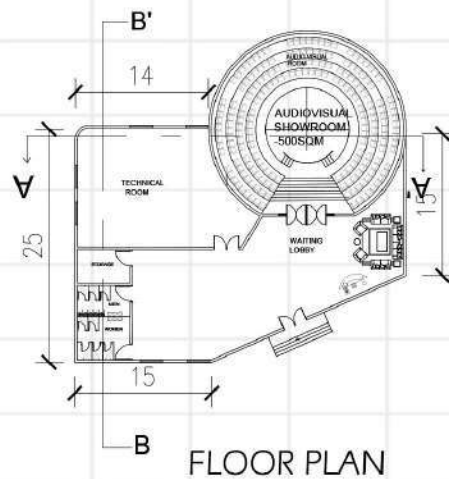


LOBBY VIEW

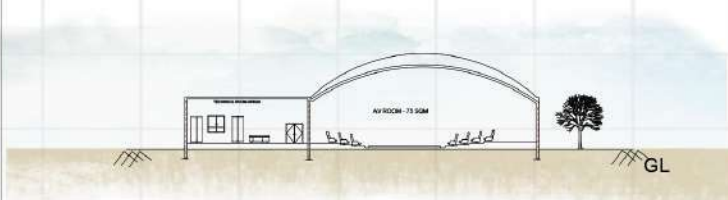
# INTERPRETATION CENTER DESIGN

## AREA STATEMENT

SPACE	AREA
LOBBY	100SQ M
RECEPTION	25SQ M
AV ROOM	150SQ M
MENS TOILET	30SQ M
	30SQ M



## KEY PLAN



SECTION AA'



SECTION BB'



LOUNGEVIEW



AV ROOM VIEW

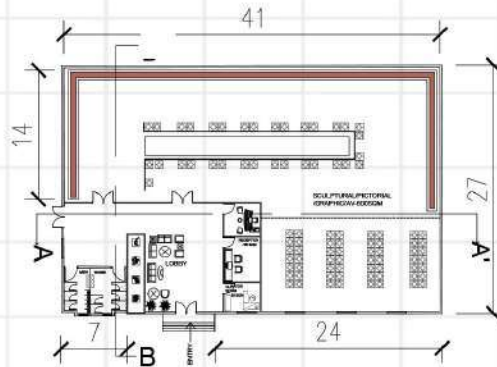


RECEPTION VIEW

SCALE 1:200

# INTERPRETATION CENTER DESIGN

KEY PLAN



FLOOR PLAN

AREA STATEMENT

SPACE	AREA
SCULPTURAL/PICTORIAL GALLERY-1&2	6650 M <sup>2</sup>
ARTIFACT DISPLAY	3000 M <sup>2</sup>
LOBBY	2500 M <sup>2</sup>
CURATOR ROOM	250 M <sup>2</sup>
RECEPTION	250 M <sup>2</sup>
LOBBY	300 M <sup>2</sup>
MENS TOILET	300 M <sup>2</sup>
WOMENS TOILET	300 M <sup>2</sup>



SECTION AA'



SECTION BB'



LOUNGE VIEW



MEMORIAL HALL VIEW



LANDSCAPE VIEW



RECEPTION VIEW

SCALE 1:200

03

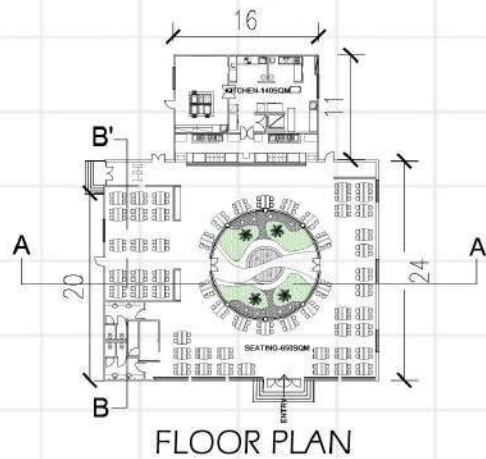
MEMORIAL ART GALLERY

NAME:BARATH  
RRN:230101601006

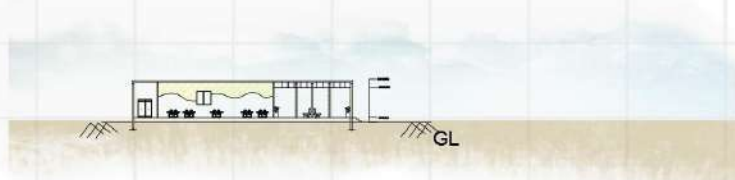
# INTERPRETATION CENTER DESIGN

## AREA STATEMENT

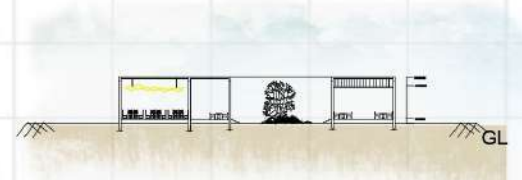
SPACE	AREA
KITCHEN	100SQ M
SEATING	140SQ M
COURTYARD	50SQ M
MENS TOILET	30SQ M
WOMEN TOILET	30SQ M
TOTAL	1500SQ M



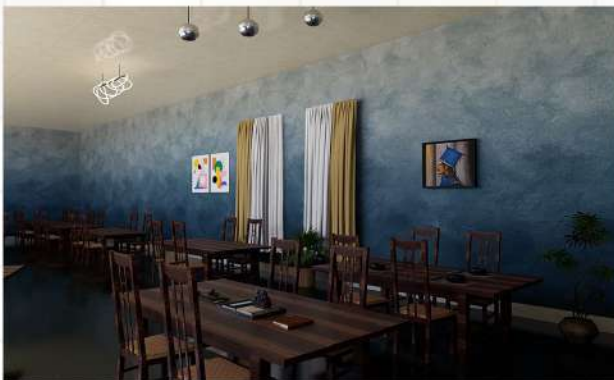
KEY PLAN



SECTION BB'



SECTION AA'



SEATING VIEW



KITCHEN VIEW



HANDWASH ROOM



COURTYARD SEATING VIEW

SCALE 1:200