

**SITE SECTION**

**SITE LOCATION**



**SITE CONTEXT**

LOCATION: SAN MIGUEL DE TUCUMAN, ARGENTINA  
 LATITUDE: 26.75° SOUTH (SOUTHERN HEMISPHERE - SUBTROPICAL ZONE)  
 LONGITUDE: 65.20° WEST  
 TERRAIN: MOSTLY VALLEY + FOOTHILLS OF ANDES  
 CLIMATE TYPE: SUBTROPICAL (HUMID-SEMI HUMID)  
 HOT SUMMERS, MILD WINTERS

**TOPOGRAPHY**

LIKELY GENTLY SLOPES TOWARDS PLAINS  
 SITE HAS EXISTING CONTOURS WITHIN  
 VIEWS: WEST SIDE ANDES HILLS (STRONG VISUAL AXIS)  
 VEGETATION: SEMI DENSE GREENERY

**VEGETATION USED FOR CONCEPT**

OCOTEA PORPHYREA  
 EVERGREEN - SYMBOLIZES CONSTANT MEMORY, ENDURANCE, PERMANENCE, AND UNINTERRUPTED MEMORY.

NO FLASHY FLOWERING FLOWERING:  
 VERY SUBTLE APPEARANCE, KEEPS FOCUS ON SPACE + EXPERIENCE NOT DECORATION.

STRONG SPATIAL PRESENCE  
 TALL, STRAIGHT TRUNK  
 DENSE, DEEP GREEN CANOPY - CREATES A QUIET, ENCLOSED ATMOSPHERE

EMOTIONAL QUALITY  
 FEELS SERIOUS, GROUNDED, AND TIMELESS PERFECT FOR THEMES LIKE:  
 > LOSS  
 > HISTORY  
 > SILENCE



DIAMETER - 10M - 15M  
 HEIGHT - 18M - 25M

**CLIMATE ANALYSIS**

SUMMER TEMPERATURE : 20 - 40 DEGREE CELSIUS (HOT)  
 WINTER TEMPERATURE : 10 - 20 DEGREE CELSIUS (MILD)  
 RAINFALL : MOSTLY IN SUMMER  
 HUMIDITY : MEDIUM - HIGH



**SITE HISTORY**

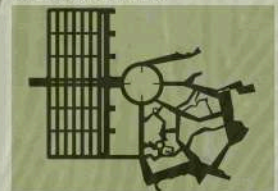
THE ARSENAL MEMORY PARK IN SAN MIGUEL DE TUCUMAN WAS ORIGINALLY PART OF A MILITARY ARSENAL THAT BECAME A MAJOR CLANDESTINE DETENTION, TORTURE, AND EXTERMINATION CENTRE DURING ARGENTINA'S DICTATORSHIP (1976-1978). HUNDREDS OF PEOPLE WERE ILLEGALLY HELD AND DISAPPEARED HERE AS PART OF STATE REPRESSION. TODAY, THE SITE IS PRESERVED AS A MEMORY PARK TO HONOUR VICTIMS AND PROMOTE AWARENESS, REMEMBRANCE, AND JUSTICE



**SITE VIEWS**



**SITE CIRCULATION**

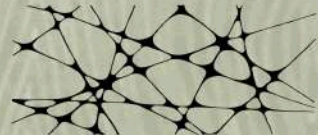


**LANDSCAPE**

THE AMPHITHEATRE LANDSCAPE IS SHAPED AS IRREGULAR FRAGMENTED TERRACES, SYMBOLIZING BROKEN MEMORIES AND PIECES OF HISTORY THAT TOGETHER RECONSTRUCT THE COLLECTIVE MEMORY OF THE SITE.

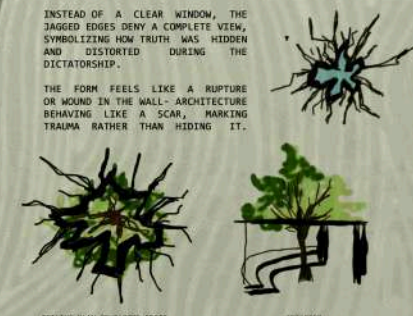
**FRAGMENTS OF MEMORY**

ARCHITECTURE COMPOSED OF SCATTERED VOLUMES LIKE BROKEN MEMORIES.  
 MULTIPLE SMALL PAVILIONS CONNECTED BY LANDSCAPE PATHS.  
 EACH PAVILION REPRESENTS A THEME:  
 DICTATORSHIP, RESISTANCE, TESTIMONY, JUSTICE



INSTEAD OF A CLEAR WINDOW, THE JAGGED EDGES DENY A COMPLETE VIEW, SYMBOLIZING HOW TRUTH WAS HIDDEN AND DISTORTED DURING THE DICTATORSHIP.

THE FORM FEELS LIKE A RUPTURE OR WOUND IN THE WALL - ARCHITECTURE BEHAVING LIKE A SCAR, MARKING TRAUMA RATHER THAN HIDING IT.



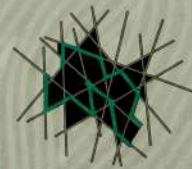
CEILING PLAN OF JAGGED EDGES

INTERIOR

**MEMORY PLAZA**

THE IRREGULAR RED LINES SYMBOLIZE THE PATHS, BOUNDARIES, AND MOVEMENTS THAT OCCURRED WITHIN THE DETENTION CENTRE DURING THE DICTATORSHIP.

THESE LINES REPRESENT MEMORIES OF EVENTS, TESTIMONIES, AND LOST LIVES, WHICH ARE FRAGMENTED BUT STILL PRESENT IN THE COLLECTIVE MEMORY OF SOCIETY.



119.7 HECTARE  
 295.8 ACRE  
 1196768.7 SQ.M



ALL DIMENSIONS ARE IN METERS | SCALE 1:2000

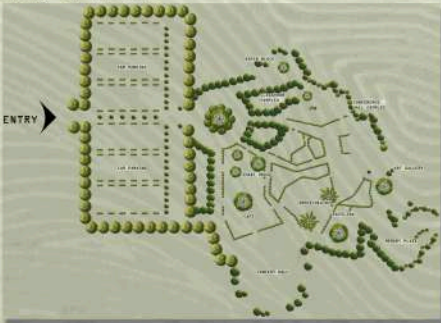
**CONCEPT & SITE ANALYSIS INTERPRETATION CENTER**

**SITE SECTION**



**LANDSCAPING**

THE LANDSCAPE LAYOUT USES IRREGULAR PATHWAYS, SCATTERED PLANTATION PATTERNS, AND FRAGMENTED OPEN SPACES TO SYMBOLIZE DISRUPTED MEMORIES AND THE EMOTIONAL HISTORY OF THE SITE. DENSE LINEAR TREE EDGES NEAR THE ENTRANCE REPRESENT ORDER AND CONTROL, WHILE THE BROKEN ORGANIC LANDSCAPE ZONES EXPRESS CONFLICT, LOSS, AND HEALING. SPACES LIKE THE MEMORY PLAZA, AMPHITHEATRE, PAVILION, AND ART GALLERY ARE CONNECTED THROUGH FRAGMENTED GREEN CIRCULATION, CREATING A REFLECTIVE JOURNEY THROUGH NATURE, HISTORY, AND REMEMBRANCE.



**SITE ZONING**

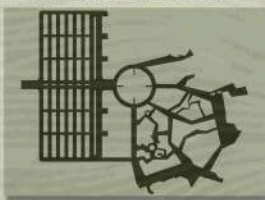


THE ZONING BEGINS WITH THE ADMIN BLOCK TO CREATE A CONTROLLED ENTRY AND MANAGEMENT POINT FOR THE INTERPRETATION CENTRE. THE ADMIN AREA IS SEPARATED FROM THE MAIN PUBLIC ZONES TO MAINTAIN PRIVACY, SECURITY, AND SMOOTH OPERATIONAL CONTROL WITHOUT DISTURBING VISITOR MOVEMENT. PUBLIC FUNCTIONS LIKE THE ART GALLERY, CAFE, PAVILION, AND CONCERT HALL ARE PLACED DEEPER WITHIN THE SITE TO CREATE A GRADUAL TRANSITION FROM CONTROLLED SPACES TO OPEN INTERACTIVE SPACES.

**SITE ENTRY**



**SITE CIRCULATION**



THE SITE CIRCULATION FOLLOWS A BROKEN AND FRAGMENTED CONCEPT INSPIRED BY THE HISTORICAL MEMORY OF ARGENTINA ARSENAL MEMORIAL PARK.

THE RIGID LINEAR GRID REPRESENTS THE SITE'S STRUCTURED MILITARY PAST, WHILE THE FRACTURED ANGULAR PATHWAYS SYMBOLIZE CONFLICT, LOSS, AND FRAGMENTED MEMORIES.

THE CENTRAL CIRCULAR COURTYARD ACTS AS A CONNECTING SPACE FOR REFLECTION, LINKING ALL ZONES OF THE INTERPRETATION CENTRE THROUGH AN EXPERIENTIAL JOURNEY OF REMEMBRANCE AND HISTORY.

**SITE PLAN**

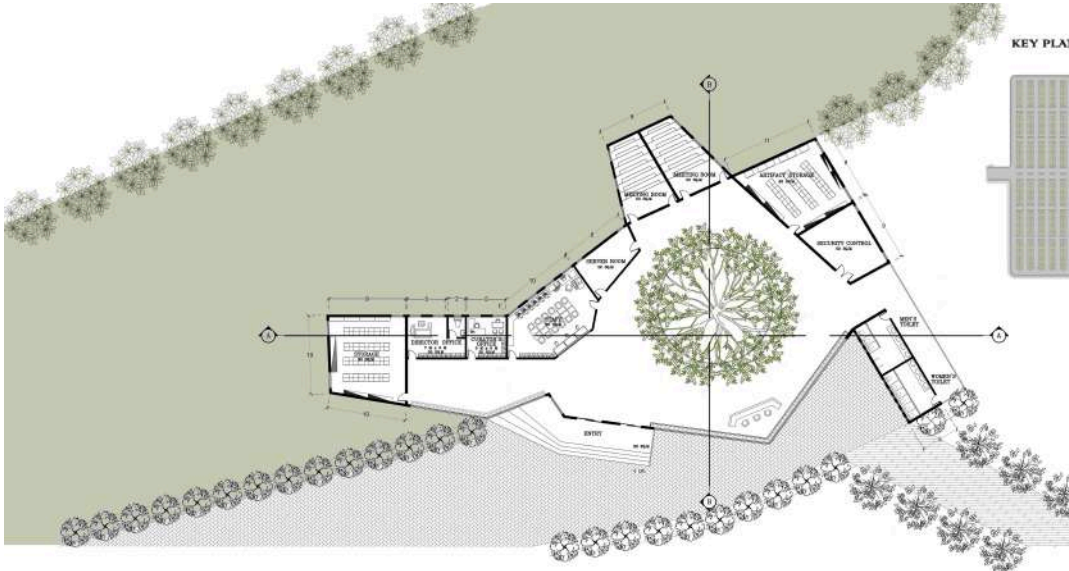
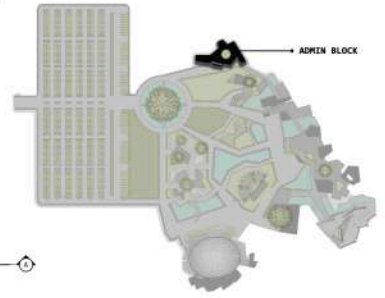
**INTERPRETATION CENTRE**

119.7 HECTARE  
295.8 ACRE  
1196768.7 SQ.M



ALL DIMENSIONS ARE IN METERS | SCALE 1:2000

KEY PLAN SCALE 1:1000



FLOOR PLAN

**FORM DEVELOPMENT CONCEPT**  
 THE PLANNING IS DEVELOPED THROUGH A BLOCK AND FRAGMENTED CONCEPT, REFLECTING THE OBSERVED HISTORIES AND LAYED HISTORY OF THE SITE. INSTEAD OF USING A RIGID CENTRALIZED FORM, THE SPACES ARE DIVIDED INTO ANGULAR FRAGMENTS, CONNECTED THROUGH AN OPEN COURTYARD. THE UNUSUAL GEOMETRY AND DETACHED EDGES STRENGTHEN THE FEELING OF FUNCTION, INTERCEPTION, AND HORIZONTALITY, MAKING THE PLANNING FUNCTIONALLY CONNECTED TO THE CHARACTER OF THE INTERVENTION CENTRE.

THE ZONING IS ARRANGED FROM PUBLIC TO PRIVATE SPACES THROUGH FRAGMENTED BLOCKS AROUND A CENTRAL COURTYARD. PUBLIC SPACES ARE PLACED NEAR THE ENTRANCE, USABLE SPACES LIKE STAFF AND MEETING ROOMS ARE CLOSED TO THE CENTRE FOR CONTROLLED INTERACTION. WHILE PRIVATE ZONES SUCH AS ARTIST'S STUDIO AND STORAGE ARE KEPT AT THE EDGES FOR FREEDOM AND RESTRICTED ACCESS. THE FRAGMENTED TOILET BLOCK MAINTAINS INDEPENDENT FUNCTIONALITY WITHOUT INTERRUPTING CIRCULATION.

**CONCEPTUAL FORM EVOLUTION**



**UNITY** STARTING WITH A SIMPLE RECTANGULAR MASS REPRESENTING UNITY AND ORDER.

**BREAK** BREAKING THE MASS INTO FRAGMENTED RECTANGULAR MASS REPRESENTING ANGULAR BLOCKS TO REFLECT OBSERVATION AND FRACTURES FACT.



**ABSTRACT** AN ABSTRACT FROM THE BROKEN FRAGMENT IS SEPARATED AND A CENTRAL STRIP OF OPEN SPACE, CONNECTS THE FRAGMENTED AREAS, FOSTERING A HEALING AND GATHERING.

**AREA STATEMENT**

STORAGE	- 80 SQ.M	MEETING ROOM (2)	- 100 SQ.M
DIRECTOR'S OFFICE	- 35 SQ.M	ARTIST'S STUDIO	- 80 SQ.M
LABORATORY'S OFFICE	- 25 SQ.M	SECURITY CONTROL	- 15 SQ.M
STAFF ROOM	- 80 SQ.M	TOILET (2)	- 20 SQ.M
SERVER ROOM	- 10 SQ.M	CIRCULATION	- 30 X
<b>TOTAL</b>	<b>- 1234 SQ.M</b>		

**MATERIALS**



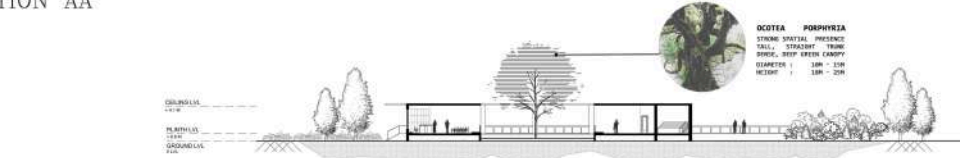
**WALLS:** USE EXPOSED REINFORCED CONCRETE WITH INSULATED CHALKY WALLS OR LOCALLY AVAILABLE CLAY BRICK MASONRY WITH EXTENSIVE TEXTURED PLASTER. THESE MATERIALS PROVIDE HIGH THERMAL MASS, HELPING REDUCE INSULATION HEAT GAIN DURING HOT DAYS. WALLS MAINTAINING DURABILITY IN HUMID CONDITIONS. A LIGHT BEIGE OR OFF-WHITE FINISH CAN BLEND WITH SURROUNDING.

**GLASS:** USE DOUBLE-GLAZED LOW-E THERMOPAN GLASS FOR THE LARGE SPANNED AND CONTIGUOUS WALLS. THIS REDUCES SOLAR HEAT GAIN, COOLING LOADS, AND IMPROVES ENERGY EFFICIENCY WHILE STILL MAINTAINING TRANSPARENCY AND VISUAL CONNECTION WITH THE COURTYARD.

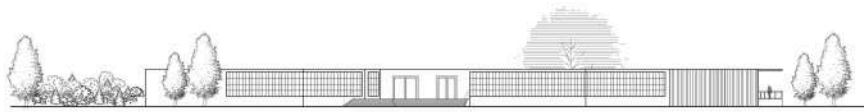
SECTION AA



SECTION BB



SOUTH ELEVATION



# ADMINISTRATION INTERPRETATION CENTRE

FLOOR PLANS | SECTIONS | ELEVATION | 3D VIEWS

ALL DIMENSIONS ARE IN METERS | SCALE 1 : 200



SADHANA | 250101601030 | B.Arch A SECTION III YEAR | CRESCENT SCHOOL OF ARCHITECTURE

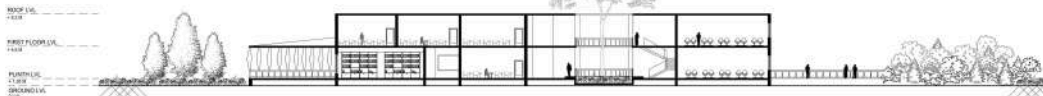


KEY PLAN SCALE 1:1000

CLASSROOM COMPLEX

GROUND FLOOR PLAN  
FLOOR PLANS

FIRST FLOOR PLAN



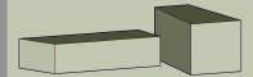
SECTION AA



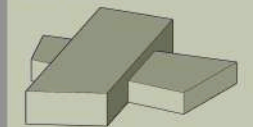
SOUTH ELEVATION

**CONCEPT**  
THE PLANNING IS BASED ON A BROKEN AND FRAGMENTED CONCEPT, WHERE SEPARATE FUNCTIONAL MODULES ARE ASSEMBLED AROUND A CENTRAL COURTYARD. THE FRAGMENTED GEOMETRY SYMBOLIZES DISRUPTION AND DISCONNECTED MOMENTS, WHILE THE COURTYARD ACTS AS A UNIFYING ELEMENT THAT RECONNECTS THE SPACES THROUGH LIGHT, NATURE, AND INTERACTION. ANGULAR CIRCULATION PATHS AND SHIFTING FORMS CREATE SPANNING MOVEMENT AND CHANGING SPATIAL EXPERIENCES THROUGHOUT THE BUILDING.

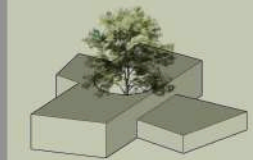
**FORM DEVELOPMENT**



**STEP 1**  
STARTING WITH SIMPLE GEOMETRIC BLOCKS REPRESENTING INDIVIDUAL FUNCTIONS.



**STEP 2**  
FRAGMENT AND SHIFT THE BLOCKS TO CREATE GAPS, TENSION, AND DIRECTIONAL MOVEMENT. ARRANGE THE BLOCKS AROUND A CENTRAL OPEN SPACE TO ESTABLISH VISUAL AND SPATIAL CONNECTION.



**STEP 3**  
CARVE OUT THE COURTYARD TO INTRODUCE NATURE, LIGHT, AND INTERACTION INTO THE CORE. CONNECT THE FRAGMENTED FORMS THROUGH ANGULAR CIRCULATION PATHS, FORMING A UNIFIED YET BROKEN COMPOSITION.



# CLASSROOM COMPLEX

## INTERPRETATION CENTRE

FLOOR PLAN | SECTION | ELEVATION | 3D VIEWS

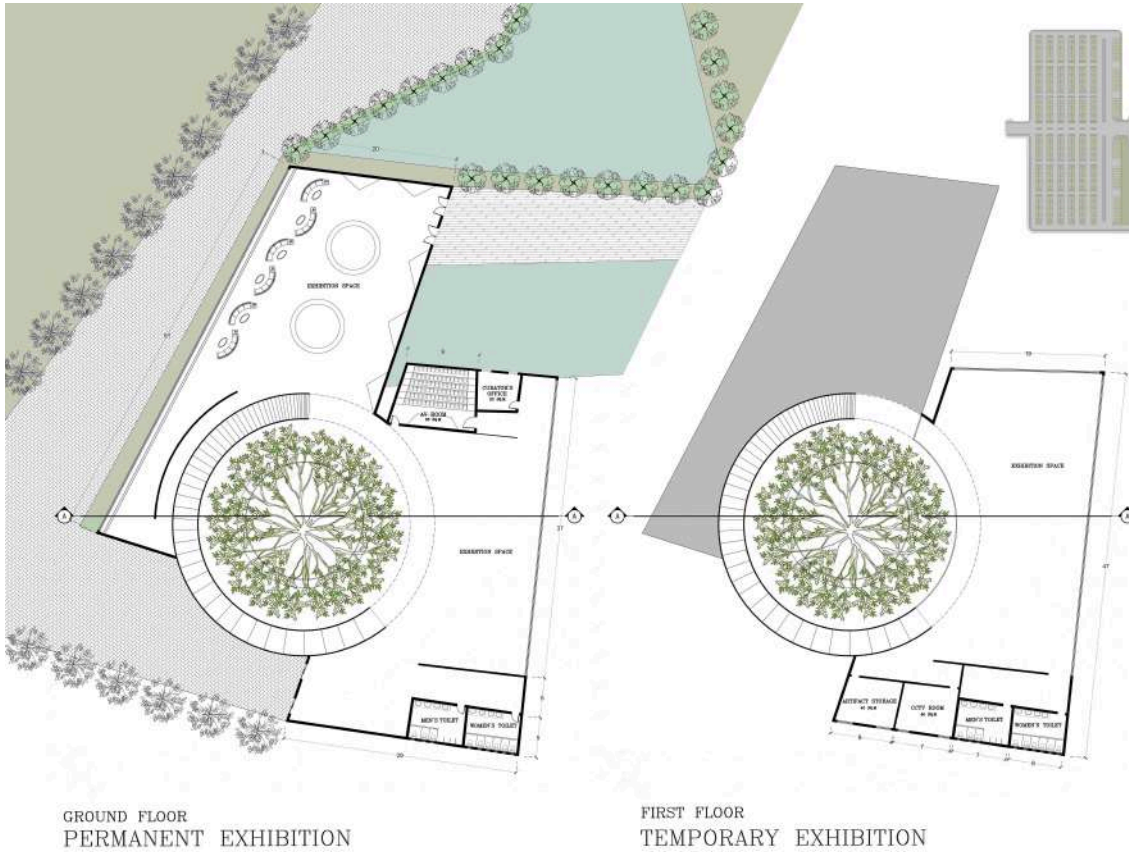
ALL DIMENSIONS ARE IN METERS | SCALE 1 : 200



SADHANA | 250101601050 | B.A.R.C.H A SECTION III YEAR | CRESCENT SCHOOL OF ARCHITECTURE

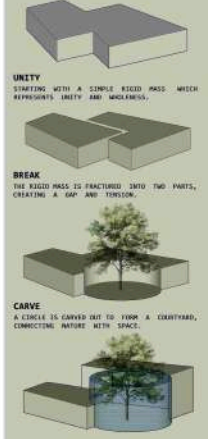






**CONCEPT**  
 THE PLAN IS DIVIDED INTO TWO MAIN FRAGMENTS CONNECTED BY A WIDER LANDSCAPE AND CIRCULATION SPACE.  
 THE CIRCULAR COURTYARDS ACT AS THE HEART OF EACH FRAGMENT, REPRESENTING HEALING AND CONTINITY WITHIN A BLOCKED FORM. THE EXHIBITION SPACES OPEN TOWARD THESE COURTS, BLURRING THE BOUNDARY BETWEEN BUILT AND NATURAL ELEMENTS. SERVICE BLOCKS SUCH AS TOILETS, STORAGE, AND UTILITY ROOMS ARE PLACED AT THE EDGES, KEEPING THE MAIN EXPERIENCE PURE AND UNDISTURBED.

**FORM DEVELOPMENT**



**DEFINE**  
 TRANSPARENT LAYERS AND RAISED LEVELS ARE INTRODUCED AROUND THE CARVED COURTYARD, CREATING SPATIAL TENSION WHILE STREAMLINING THE CONNECTION BETWEEN NATURE AND THE BUILT PLAN.

**BLOCK MODEL**



**AREA STATEMENT**

1. AV. ROOM	- 65 SQ.M
2. CURATOR'S OFFICE	- 28 SQ.M
3. ARTIFACT STORAGE	- 40 SQ.M
4. CCTV ROOM	- 40 SQ.M
5. WOMEN'S TOILET	- 50 SQ.M
6. MEN'S TOILET	- 50 SQ.M
7. PERMANENT EXHIBITION HALL	- 1000 SQ.M
8. TEMPORARY EXHIBITION HALL	- 500 SQ.M
<b>TOTAL</b>	<b>- 1765</b>

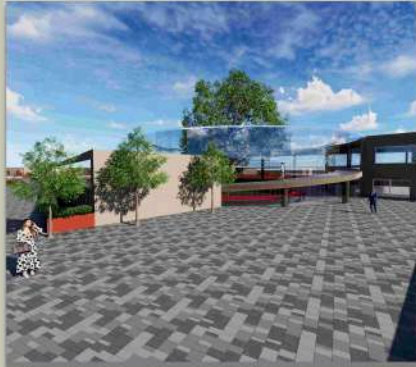
GROUND FLOOR  
PERMANENT EXHIBITION

FIRST FLOOR  
TEMPORARY EXHIBITION

SECTION AA



WEST ELEVATION



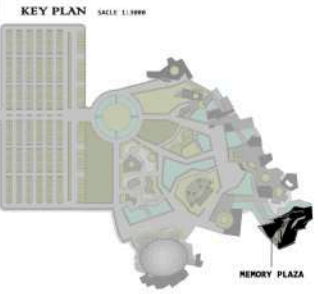
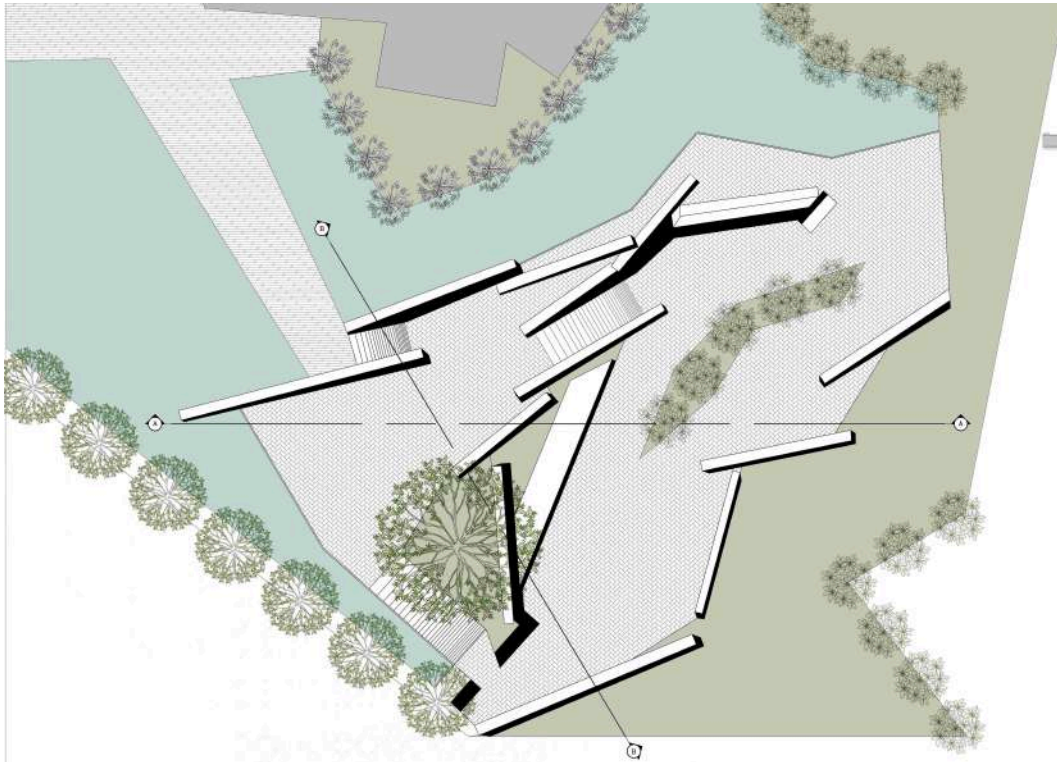
**PAVILION**  
INTERPRETATION CENTRE

FLOOR PLANS | SECTIONS | ELEVATION | 3D VIEWS

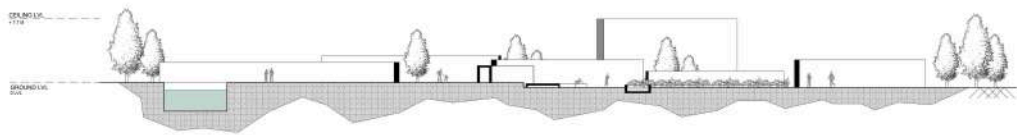
ALL DIMENTIONS ARE IN METERS | SCALE 1 : 200



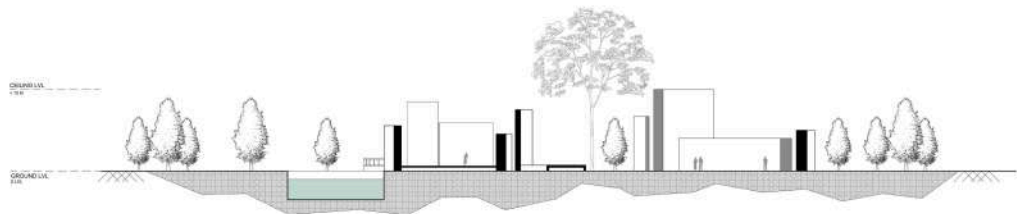
SADHANA | 23101610130 | B.ARCH A SECTION III YEAR | CRESCENT SCHOOL OF ARCHITECTURE



FLOOR PLAN



SECTION AA



SECTION BB

**CONCEPT**  
 THE MEMORY PLAZA IS A SEQUENCE OF FRAGMENTED WALLS AND OPEN SPACES THAT GUIDE VISITORS THROUGH A JOURNEY OF REFLECTION. THE INTERPLAY OF LIGHT, MATERIAL, AND LANDSCAPE CREATES AN ATMOSPHERE OF REMEMBRANCE, SOLIDITY, AND QUIET CONTEMPLATION.

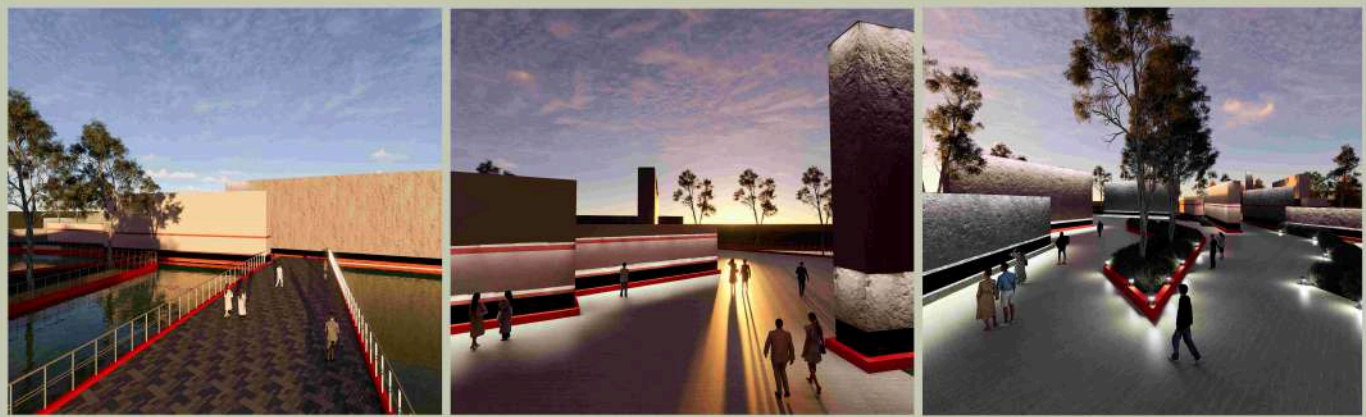
THE IRREGULAR GRID LINES SPREAD THE PATHS, BOUNDARIES, AND MOVEMENTS THAT OCCUR WITHIN THE VISITATION CENTRE (ARENA) THE DISTRICTSHIP.

THESE LINES REPRESENT MEMORIES OF EVENTS, TESTIMONIES, AND LOST LEVELS, WHICH ARE FRAGMENTED BUT STILL PRESENT IN THE COLLECTIVE MEMORY OF SOCIETY.

**FORM EVOLUTION**

**RIGID MASS WITH HIERARCHY**  
 THE FORM EVOLUTION BEGINS WITH ISOLATED VERTICAL AND HORIZONTAL BLOCKS, REPRESENTING FRAGMENTED MEMORIES AND DISCONNECTED EXPERIENCES.

**ARRANGING THE MASS IN IRREGULAR GRID LINES**  
 THESE ISOLATED MASSES ARE THEN SHIFTED, ROTATED, AND INTERCONNECTED TO CREATE FUNCTION, DIRECTIONAL MOVEMENT, AND VISUAL DYNAMIC BETWEEN THE SPACE. THE VARIATION IN HEIGHT INTRODUCES DIFFERENT LAYERS OF MEMORY, LOSS, AND COLLECTIVE HISTORY, WHILE THE BARRIER ARRANGEMENT GENERATES TRANSIENT SPACES THROUGHOUT THE PLAZA. AS THE FRAGMENTS CONNECT THROUGH PATHWAYS AND OPEN SPACES, THE FORM TRANSFORMS INTO A MEMORY PLAZA THAT ENCOURAGES MOVEMENT, REFLECTION, GATHERING, AND EXTERNAL INTERACTION WITH THE SPACE.



# MEMORY PLAZA

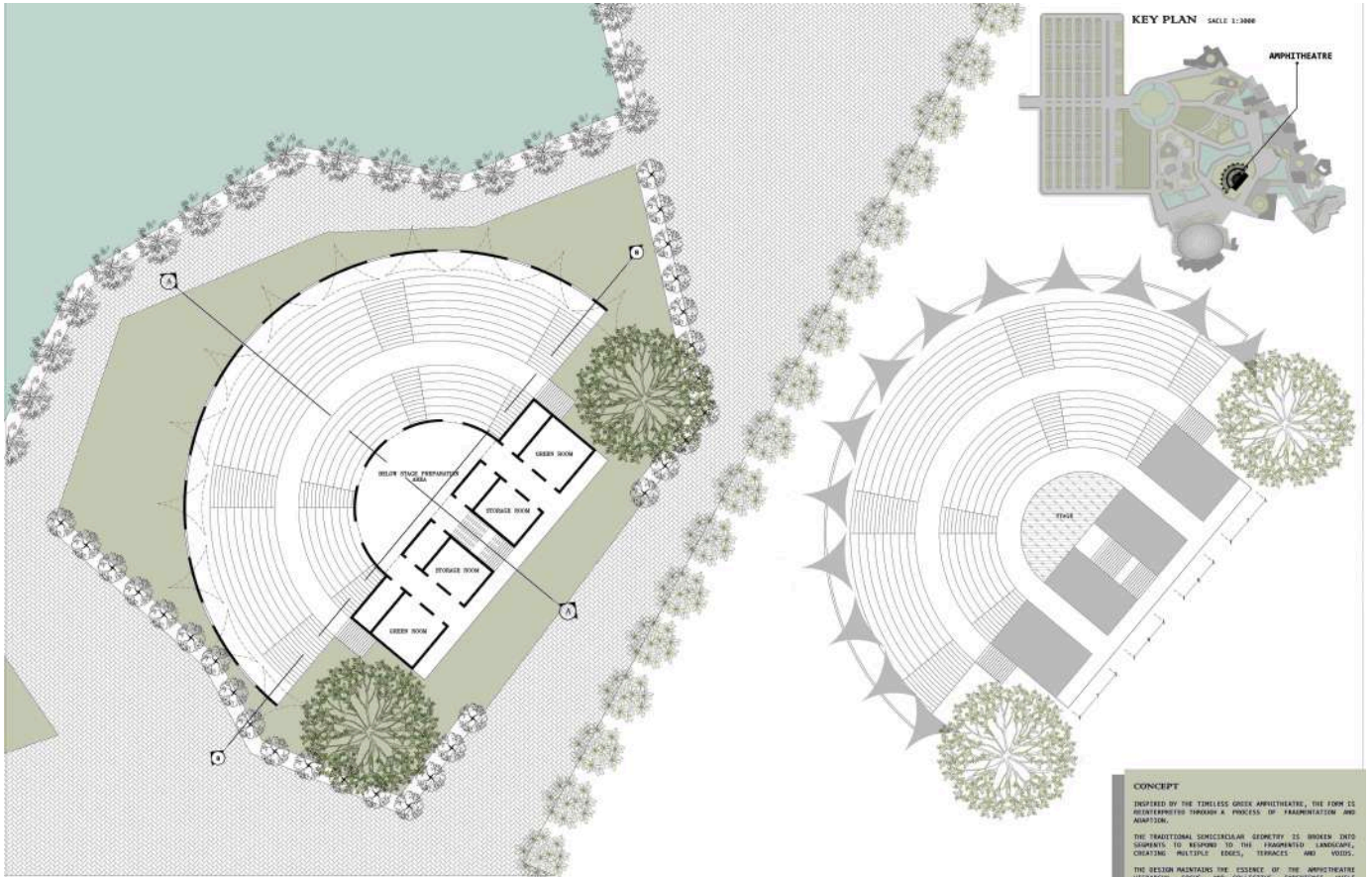
## INTERPRETATION CENTRE

FLOOR PLAN | SECTION | ELEVATION | 3D VIEWS

ALL DIMENSIONS ARE IN METERS | SCALE 1 : 200



SADHANA | 25101061030 | B.ARCH A SECTION III YEAR | CRESCENT SCHOOL OF ARCHITECTURE



GROUND FLOOR PLAN


ROOF PLAN

**CONCEPT**

INSPIRED BY THE TIMELESS GREEK AMPHITHEATRE, THE FORM IS REINTERPRETED THROUGH A PROCESS OF FRAGMENTATION AND ADAPTION.

THE TRADITIONAL SEMICIRCULAR GEOMETRY IS BROKEN INTO SEGMENTS TO RESPOND TO THE FRAGMENTED LANDSCAPE, CREATING MULTIPLE EDGES, TERRACES AND VOIDS.

THE DESIGN HIGHLIGHTS THE ESSENCE OF THE AMPHITHEATRE HIERARCHY, FOCUS AND COLLECTIVE EXPERIENCE WHILE INTEGRATING WITH NATURE AND EXISTING SITE CONDITIONS.

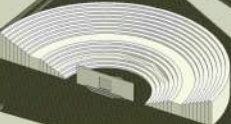
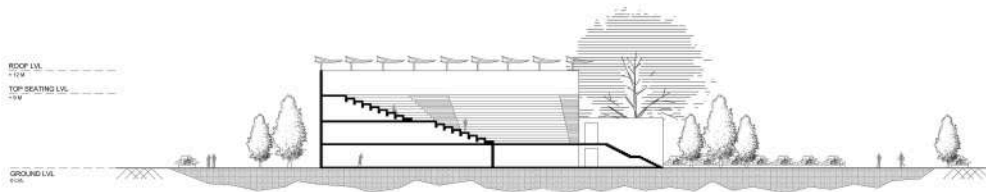


THE AMPHITHEATRE FORM EVOLVES FROM THE TRADITIONAL GREEN SPACE AND IS FRAGMENTED INTO MULTIPLE LIMITED SEGMENTS TO RESPOND TO THE BROKEN LANDSCAPE CONCEPT. INSTEAD OF A CONTINUOUS CURVED FORM, THE SEATING TERRACES ARE SPLIT AND ADJUSTED ALONG ANGULAR LINES, CREATING TENSION, MOVEMENT, AND VISUAL DISRUPTION.

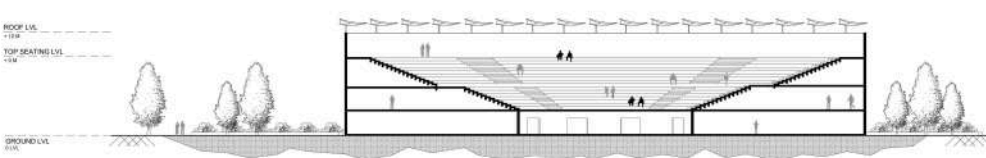
THE FRAGMENTED GEOMETRY ALONG THE STRUCTURE TO BLEND WITH THE UNUSUAL SITE CONDITIONS WHILE MAINTAINING FOCUS TOWARD THE CENTRAL STAGE.

SUPPORTING SPACES LIKE GREEN ROOMS AND STORAGE ARE INTEGRATED WITHIN THE SEATED ZONE, STRENGTHENING THE IDEA OF BREAKER MASSES COMING TOGETHER AROUND A SHARED PUBLIC SPACE.

THE FINAL FORM PRESERVES THE COLLECTIVE EXPERIENCE OF A GREEK AMPHITHEATRE WHILE REINTERPRETING IT THROUGH FRAGMENTATION, LANDSCAPE INTEGRATION, AND SPATIAL INTERACTION.

SECTION AA



SECTION BB



# AMPHITHEATRE

## INTERPRETATION CENTRE

GREEK STYLE

FLOOR PLAN | SECTION | ELEVATION | 3D VIEWS

ALL DIMENSIONS ARE IN METERS | SCALE 1 : 200

SADHANA | 230101601030 | B.A.R.C.H A SECTION III YEAR | CRESCENT SCHOOL OF ARCHITECTURE



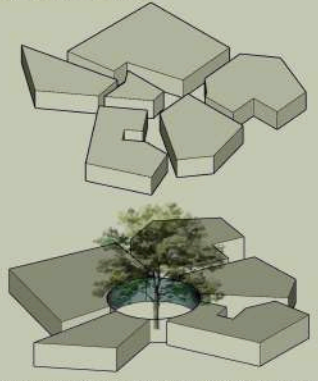


FLOOR PLAN



CONCEPT STATEMENT

THE CAFETERIA IS DESIGNED ON A BROKEN CONCEPT WHERE SPACES ARE FRAGMENTED LIKE PIECES OF A MOSE. THE BROKEN CIRCULATION SPINE CONNECTS SEPARATE DINING EXPERIENCES CREATING MOMENTS OF CONNECTION AND RELEASE. THE DESIGN REFLECTS HEAVY, DISORIENTED AND COMING TOGETHER.



THE FORM EVOLVED BEING WITH FRAGMENTED GEOMETRIC PIECES ARRANGED TO REPRESENT BROKEN MEMORIES AND RECONNECTED EXPERIENCES. THESE INDIVIDUAL BLOCKS ARE THEN SHIFTED AND ORIENTED TOWARD A CENTRAL SPACE, CREATING TENSION AND MOVEMENT BETWEEN THE BUILT FORM. A CIRCULAR COURTYARD IS CARVED AT THE CORE TO ENHANCE LIGHT, AIRFLOW, AND VISUAL CONNECTIVITY, ACTING AS A COMMON GATHERING SPACE THAT RECONNECTS THE FRAGMENTED ELEMENTS. THE IRREGULAR CONNECTION CREATES DYNAMIC CIRCULATION PATHS, SHAVING SPATIAL EXPERIENCES, AND MOMENTS OF INTERACTION, REFLECTING THE TRANSITION FROM FRAGMENTATION TOWARD COLLECTIVE CONNECTION AND UNITY.

CIRCULATION

THE CAFETERIA CIRCULATION IS DESIGNED THROUGH FRAGMENTED MOVEMENT PATHS THAT RESPOND TO THE BROKEN CONCEPT OF THE PROJECT. INSTEAD OF A SINGLE DIRECT ROUTE, CIRCULATION SPLITS AND RE CONNECTS BETWEEN DIFFERENT DINING ZONES, CREATING MULTIPLE MOVEMENT CHOICES AND SPATIAL EXPERIENCES.



THE CENTRAL CIRCULATION SPINE ACTS AS THE PRIMARY CONNECTOR, WHILE BRANCHING PATHS GUIDE VISITORS THROUGH SEATING AREAS, GATHERING SPACES, AND TRANSITIONAL SPACES. THE ANGULAR INTERSECTIONS AND DIRECTIONAL SHIFTS GENERATE MOMENTS OF VISUAL TENSION AND INTERACTION POINTS, MAKING MOVEMENT THROUGH THE CAFETERIA MORE DYNAMIC AND EXPERIENTIAL RATHER THAN LINEAR.

CONCEPTUAL ZONING



SECTION AA



SECTION BB



NORTH ELEVATION



# COMMERCIAL PREMISES CAFETERIA

## INTERPRETATION CENTRE

FLOOR PLAN | SECTION | ELEVATION | 3D VIEWS

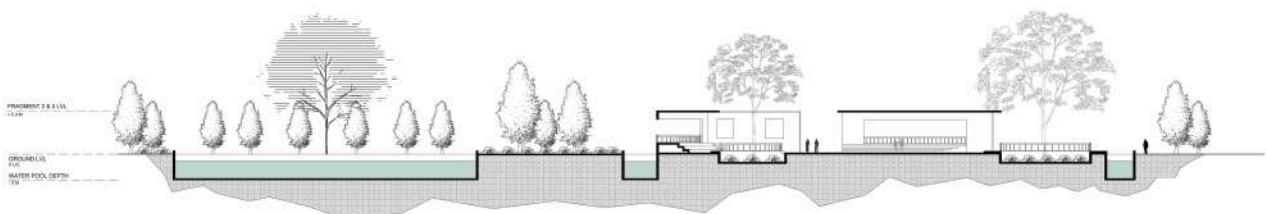
ALL DIMENSIONS ARE IN METERS | SCALE 1 : 200

SADHANA | 230101601030 | B.A.R.C.H A SECTION III YEAR | CRESCENT SCHOOL OF ARCHITECTURE

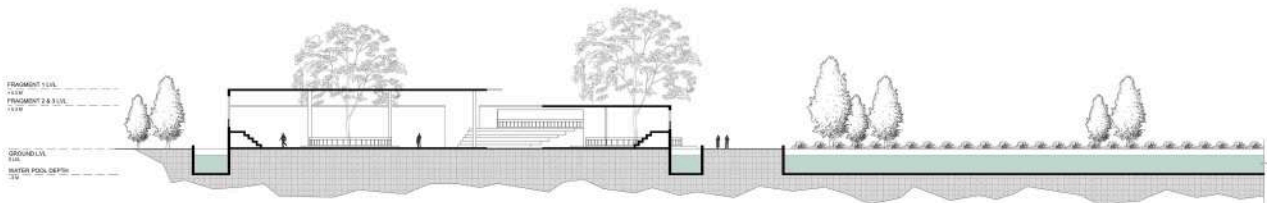




FLOOR PLAN



SECTION AA



SECTION BB



# SHADE HOUSE

## INTERPRETATION CENTRE

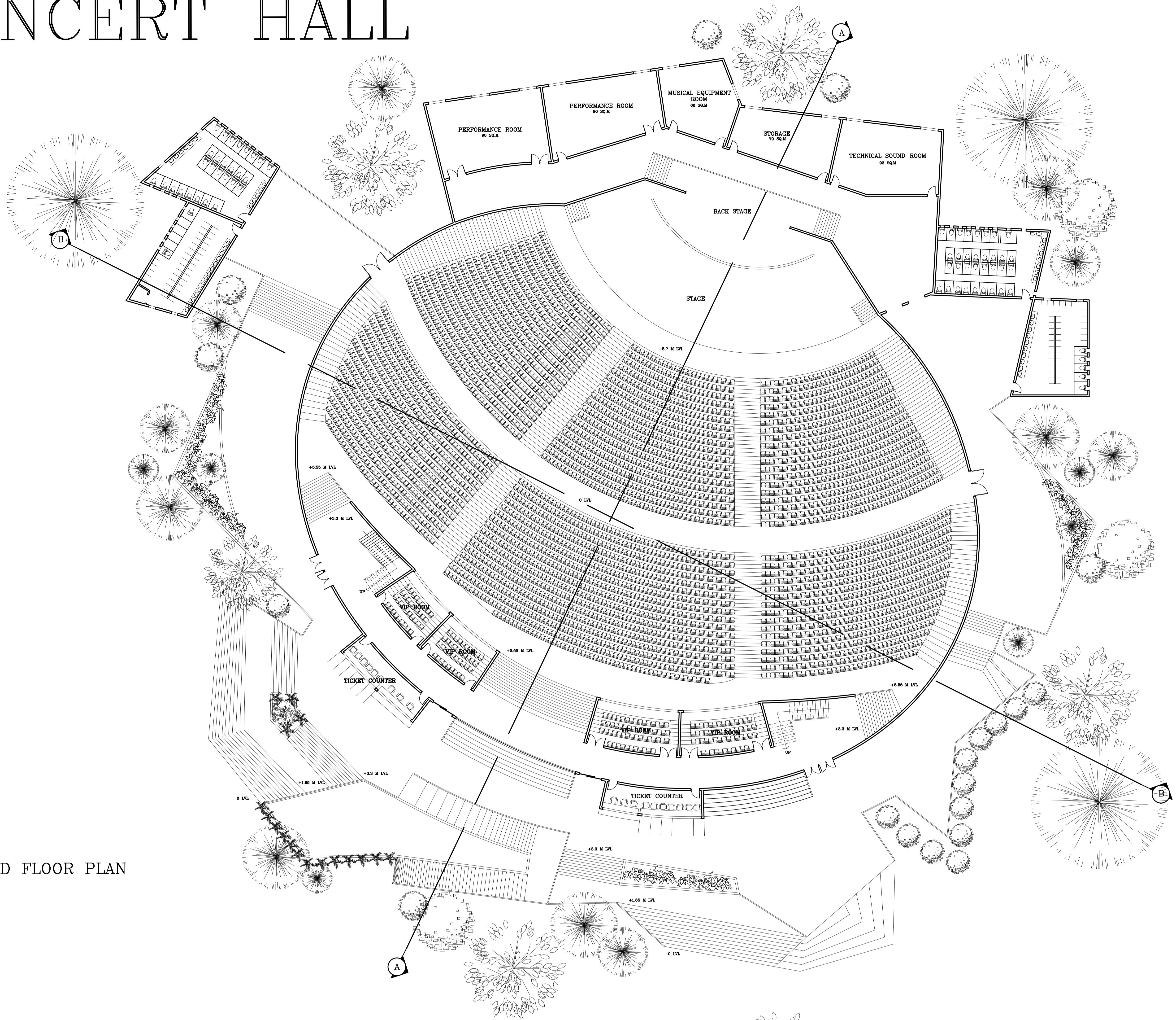
FLOOR PLAN | SECTION | ELEVATION | 3D VIEWS

ALL DIMENSIONS ARE IN METERS | SCALE 1 : 200

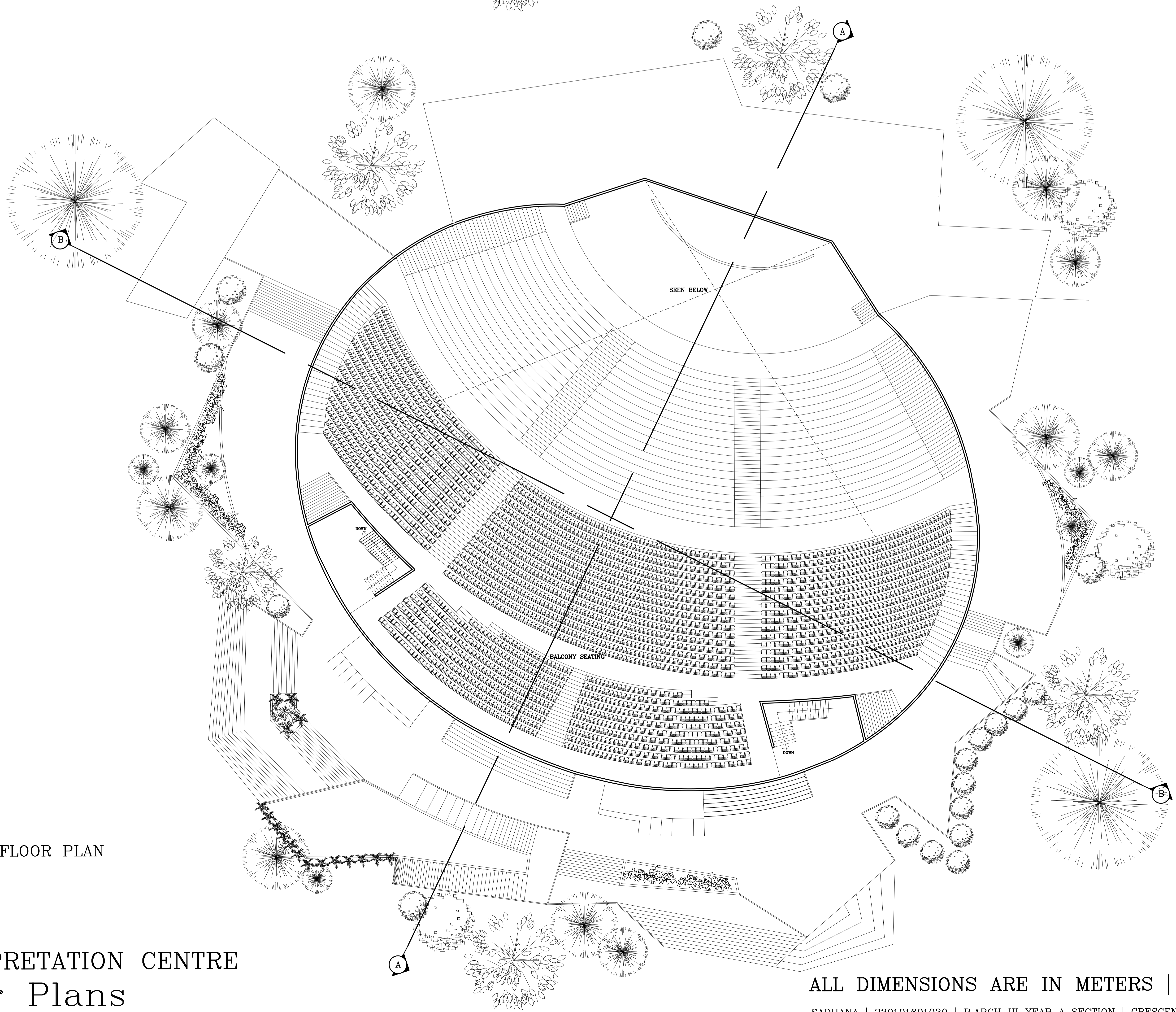


SADHANA | 230101601050 | B.A.RCH A SECTION III YEAR | CRESCENT SCHOOL OF ARCHITECTURE

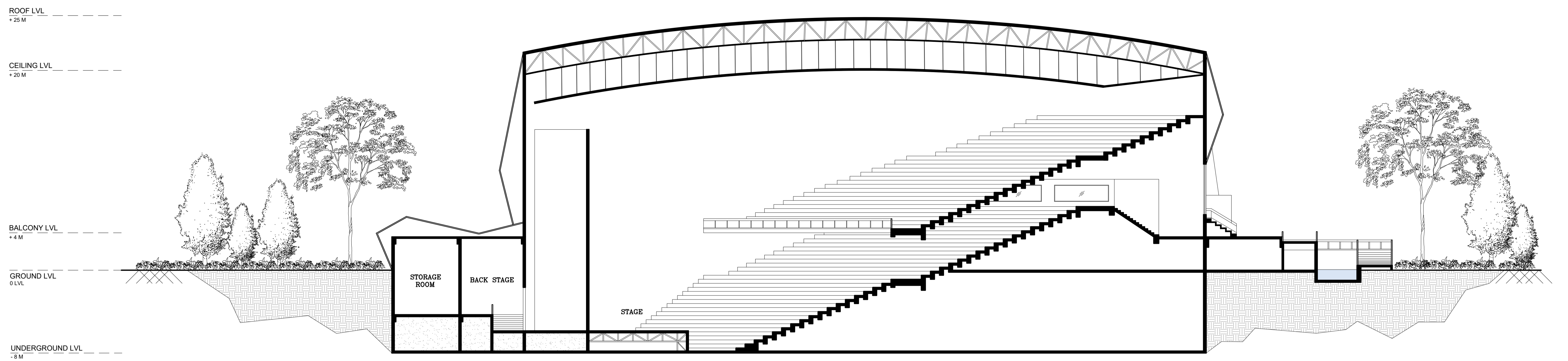
# CONCERT HALL



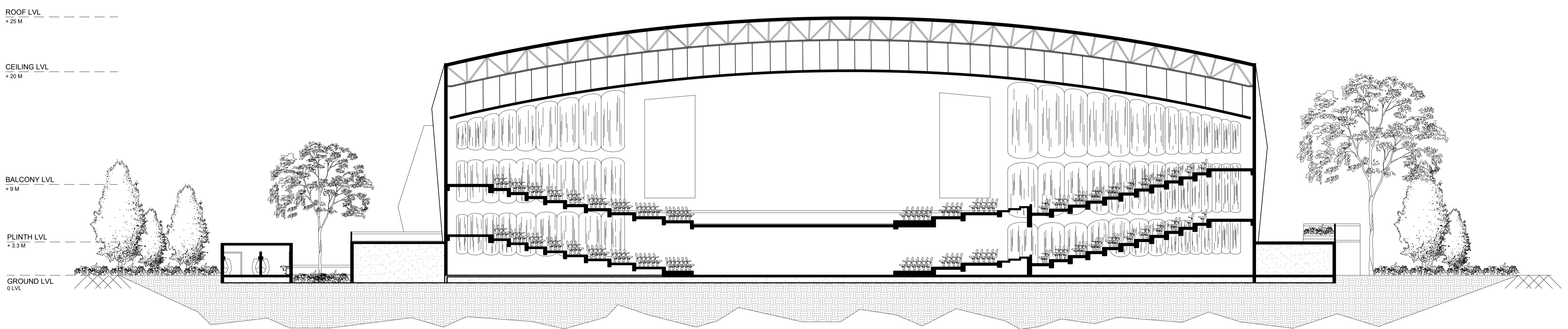
GROUND FLOOR PLAN



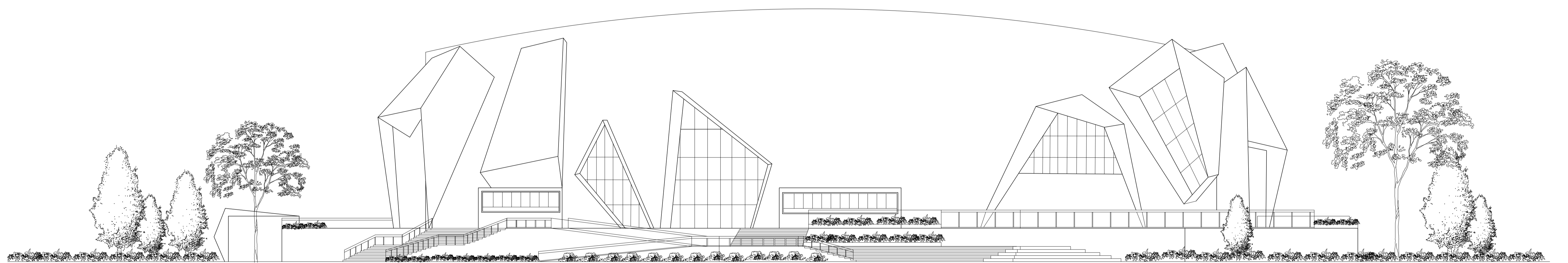
FIRST FLOOR PLAN



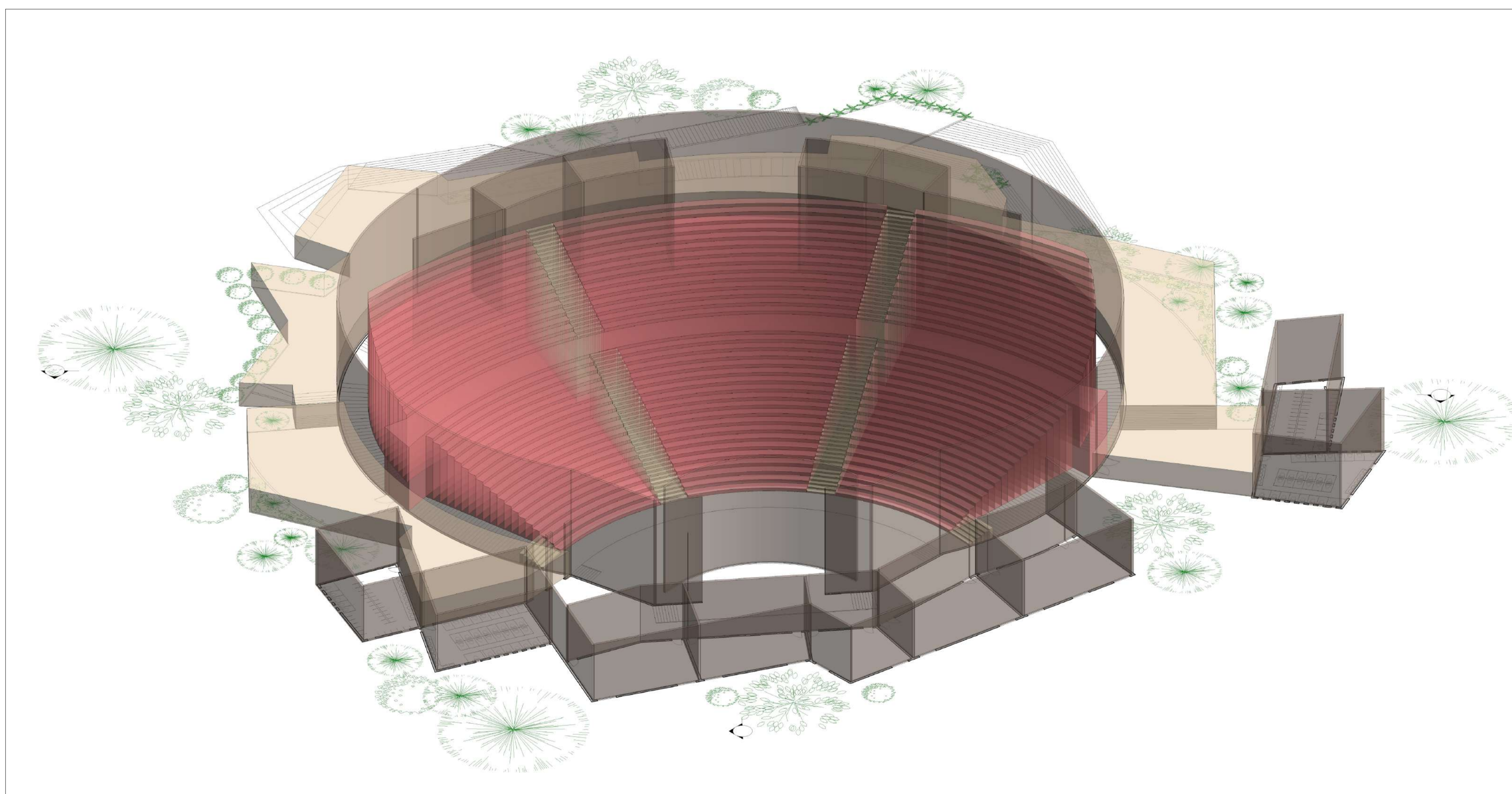
SECTION AA



SECTION BB



NORTH ELEVATION



# CONCERT HALL

INTERPRETATION CENTRE  
Sections | Elevation | Views

ALL DIMENSIONS ARE IN METERS | SCALE 1 : 200

SADHANA | 230101601030 | B.ARCH III YEAR A SECTION | CRESCENT SCHOOL OF ARCHITECTURE