

LEGEND	
Nos	Description
01	BUS ENTRY
02	ROAD
03	PEDESTRIAN PATHWAY
04	EMERGENCY EXIT
05	BUS ARRIVAL
06	BUS MAINTENANCE
07	SERVICE STATION
08	MAIN BUS TERMINAL
09	STAFF PARKING
10	CARGO OFFICE
11	CAFE & REFRESHMENT CENTER
12	BOARDING BUS
13	DEPARTURE BUS
14	BUS PARKING
15	BUS EXIT
16	RAMP WITH 1:8 RATIO
17	LANDSCAPE
18	WATER TOWER (OVER HEAD WATER TANK)
19	UNDER GROUND WATER TANK
20	RAIN WATER TANK
21	ROAD
22	ENTRANCE & EXIT (LOCAL TRANSPORT)
23	PRIVATE CAR PARKING
24	CAR, JEEP, TAXI PARKING
25	BIKE PARKING
26	CAFE
27	WAITING AREA
28	PUBLIC TOILET
29	MOSQUE
30	GREEN AREA
31	COLLECTION TANK
32	WAGON & HIACE PARKING
33	WAGON & HIACE EXIT
34	RAMP
35	WAGON ARRIVAL
36	FUTURE EXTENSION WITH METRO BUS
37	PAVILION

PARKING SCHEDULE	
REQUIREMENT	PROPOSED
BUS ARRIVAL BAYS = 20 BUSES	30 BUSES
BUS BOARDING BAYS = 25 BUSES	29 BUSES
BUS DEPARTURE BAYS = 10 BUSES	15 BUSES
BUS MAINTENANCE BAYS = 20 BUSES	29 BUSES
COASTER / FLYING COACH BAYS = 80 BUSES	87 BUSES
WAGON / HIACE / PICKUP BAYS = 105 NOS	112 NOS
CAR / JEEP/ SUZUKI / TAXI BAYS = 110 NOS	124 NOS
PICKUP & DROP PRIVATE PARKING = 300 NOS	316 NOS
TOTAL = 670	TOTAL = 742

MASTER PLAN

SCALE = as shown

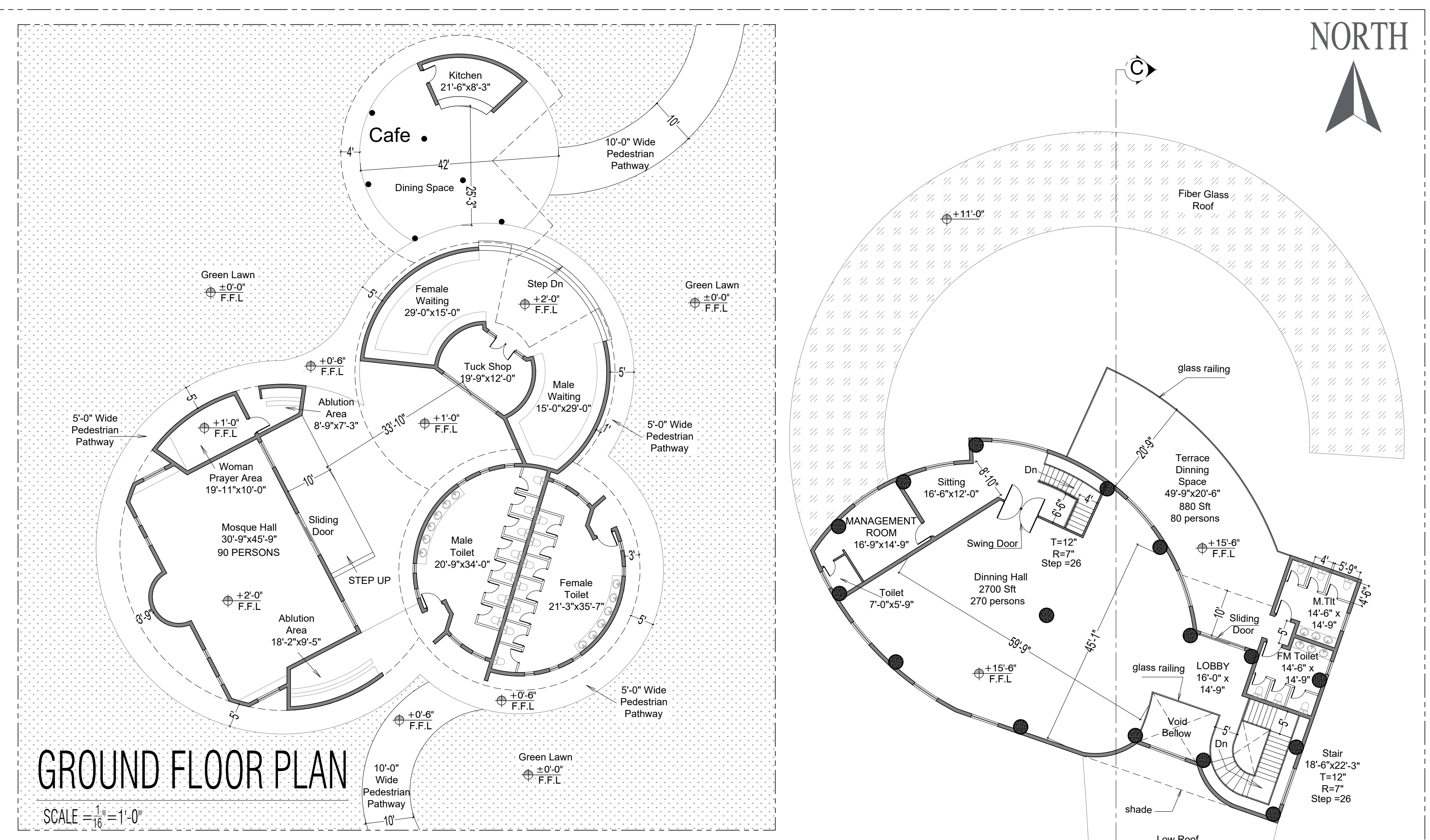
PROPOSED PARKING SCHEDULE	SPACE PROPOSED FOR USER
TOTAL BASES = 190 BUSES	PASSENGER WAITING = 1059 PERSONS
TOTAL WAGON / HIACE PARKING = 112 NOS	CAFE & REFRESHMENT = 880 PERSONS
TOTAL CAR / JEEP PARKING = 440 NOS	MOSQUE HALL = 90 PERSONS
TOTAL BIKE PARKING = 50 NOS	



GROUND FLOOR PLAN

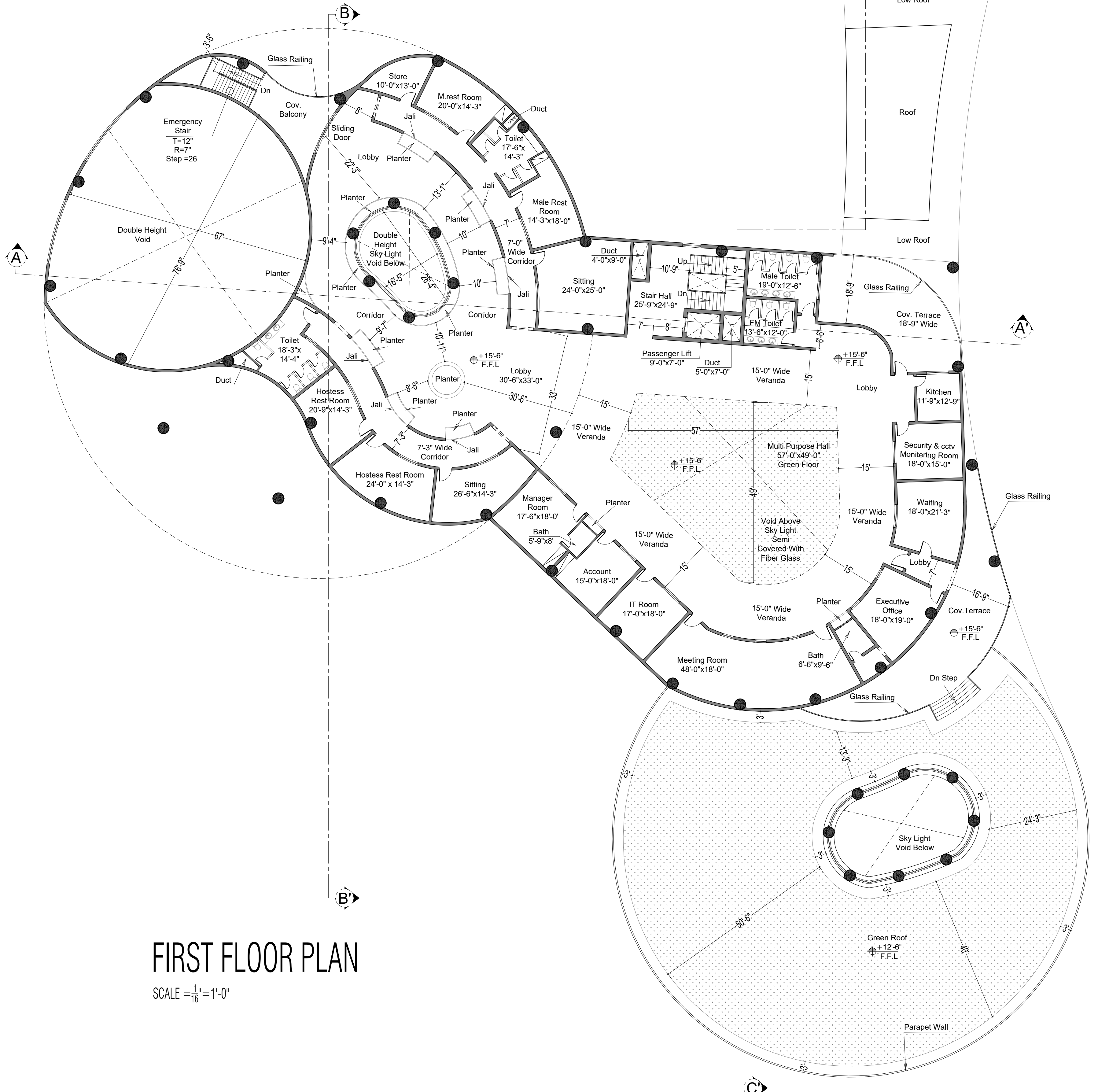
SCALE = 1/16" = 1'-0"

PROJECT TITLE:	SHEET TITLE:	SHEET NO.:
TRANSPORTATION HUB	FLOOR PLANS	A-03



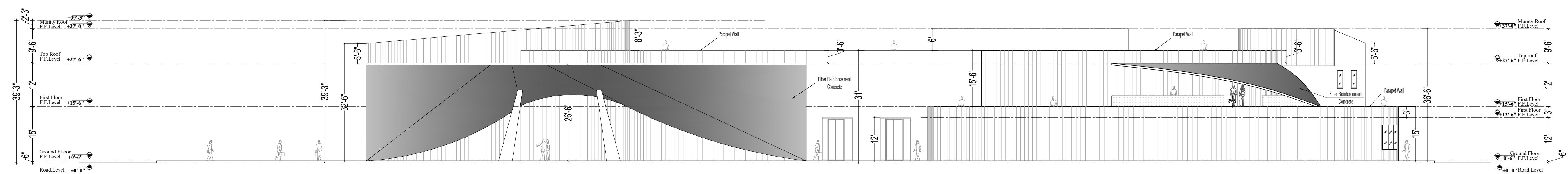
GROUND FLOOR PLAN

SCALE = 1/16" = 1'-0"



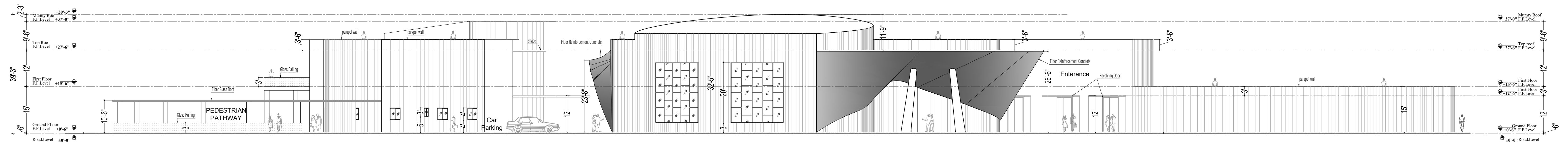
FIRST FLOOR PLAN

SCALE = 1/16" = 1'-0"



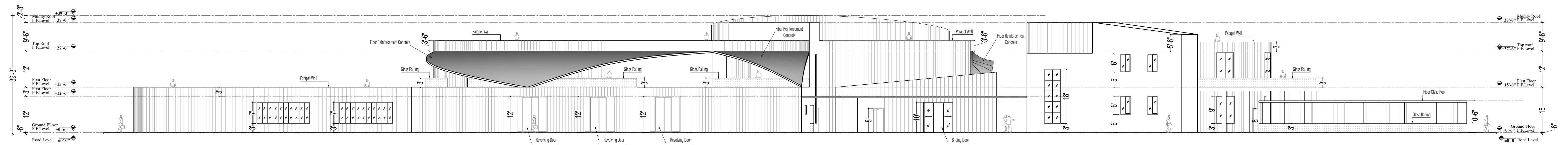
NORTH SIDE ELEVATION

SCALE = 1/16" = 1'-0"



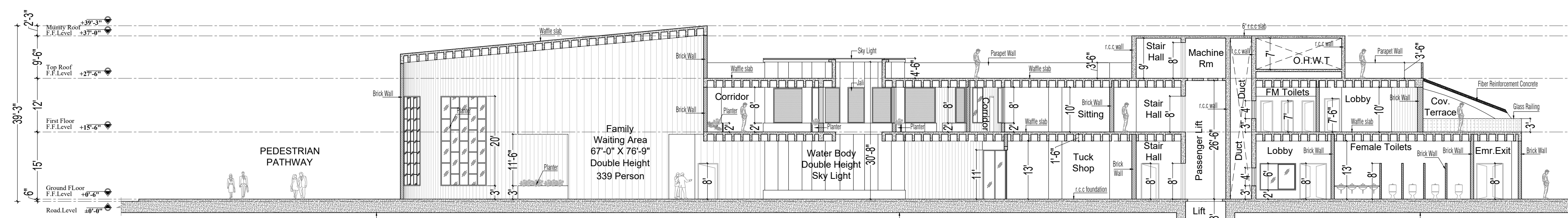
WEST SIDE ELEVATION

SCALE = 1/16" = 1'-0"



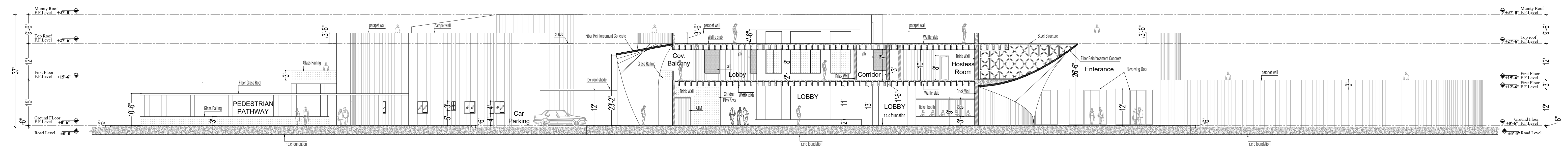
EAST SIDE ELEVATION

SCALE = 1/16" = 1'-0"



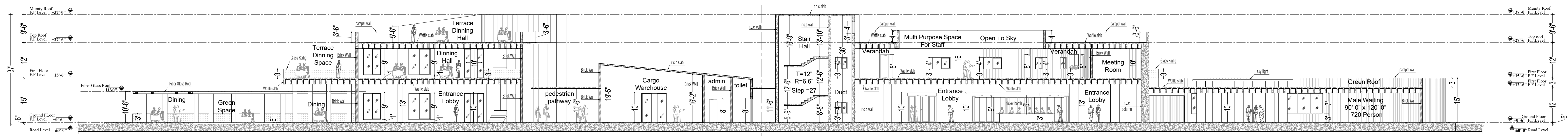
SECTION AT A-A'

SCALE = 1/16" = 1'-0"



SECTION AT B-B'

SCALE = 1/16" = 1'-0"



SECTION AT C-C'

SCALE = 1/16" = 1'-0"