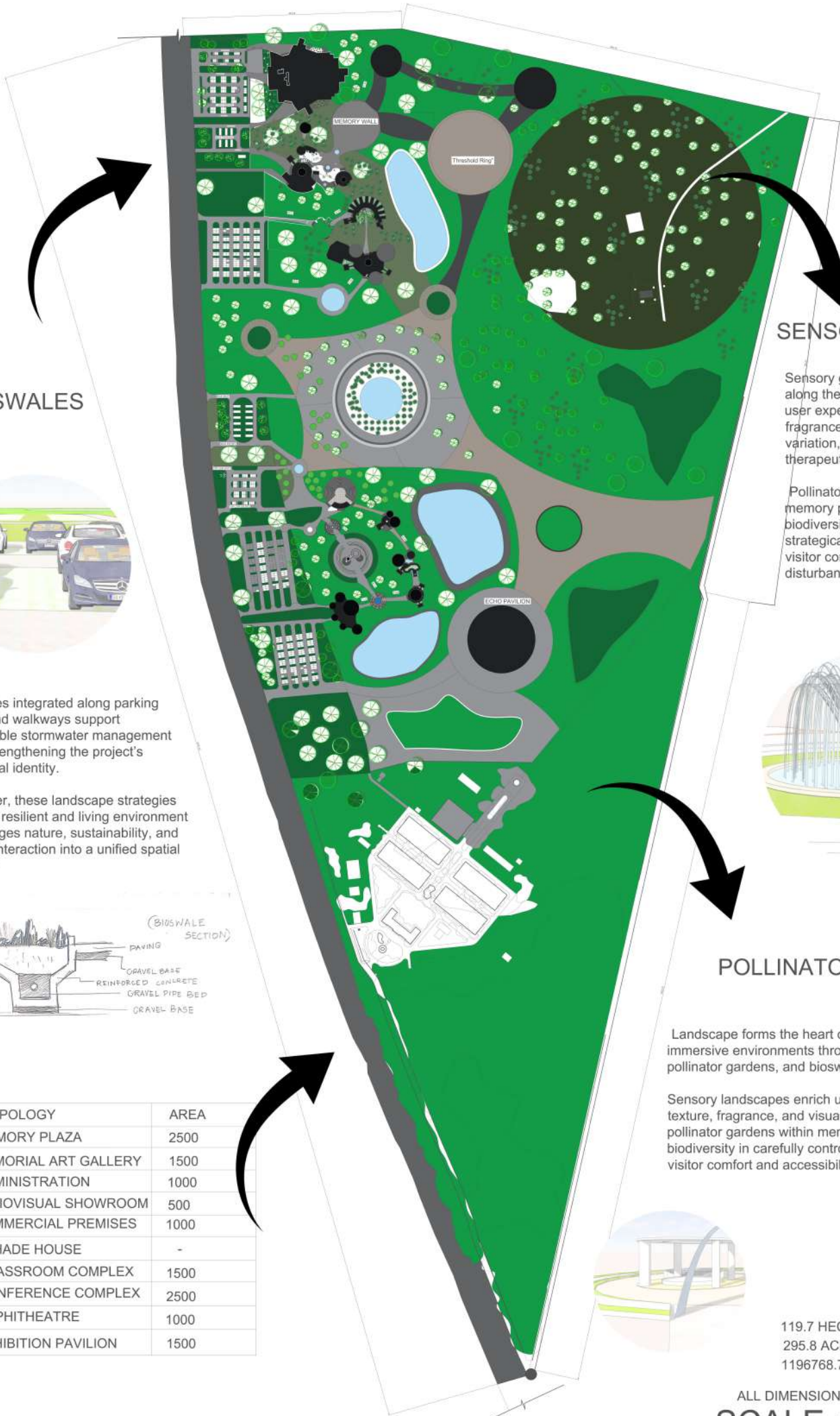


# SITE PLAN - ARSENAL MEMORY PARK

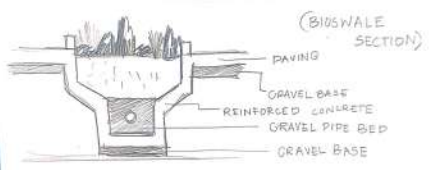


## BIOSWALES



Bioswales integrated along parking areas and walkways support sustainable stormwater management while strengthening the project's ecological identity.

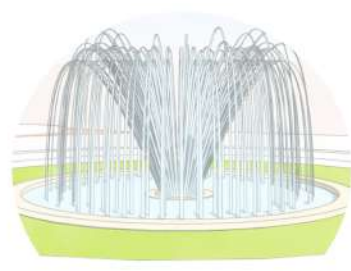
Together, these landscape strategies create a resilient and living environment that merges nature, sustainability, and human interaction into a unified spatial network.



## SENSORY GARDEN

Sensory gardens integrated along the pathways enhance the user experience through texture, fragrance, sound, and seasonal variation, creating immersive and therapeutic environments.

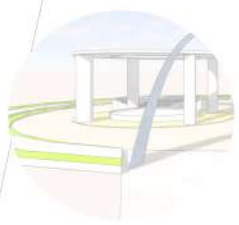
Pollinator gardens within memory plazas encourage biodiversity while being strategically planned to ensure visitor comfort and minimal disturbance to public spaces



## POLLINATOR GARDEN

Landscape forms the heart of the design, shaping immersive environments through sensory gardens, pollinator gardens, and bioswales.

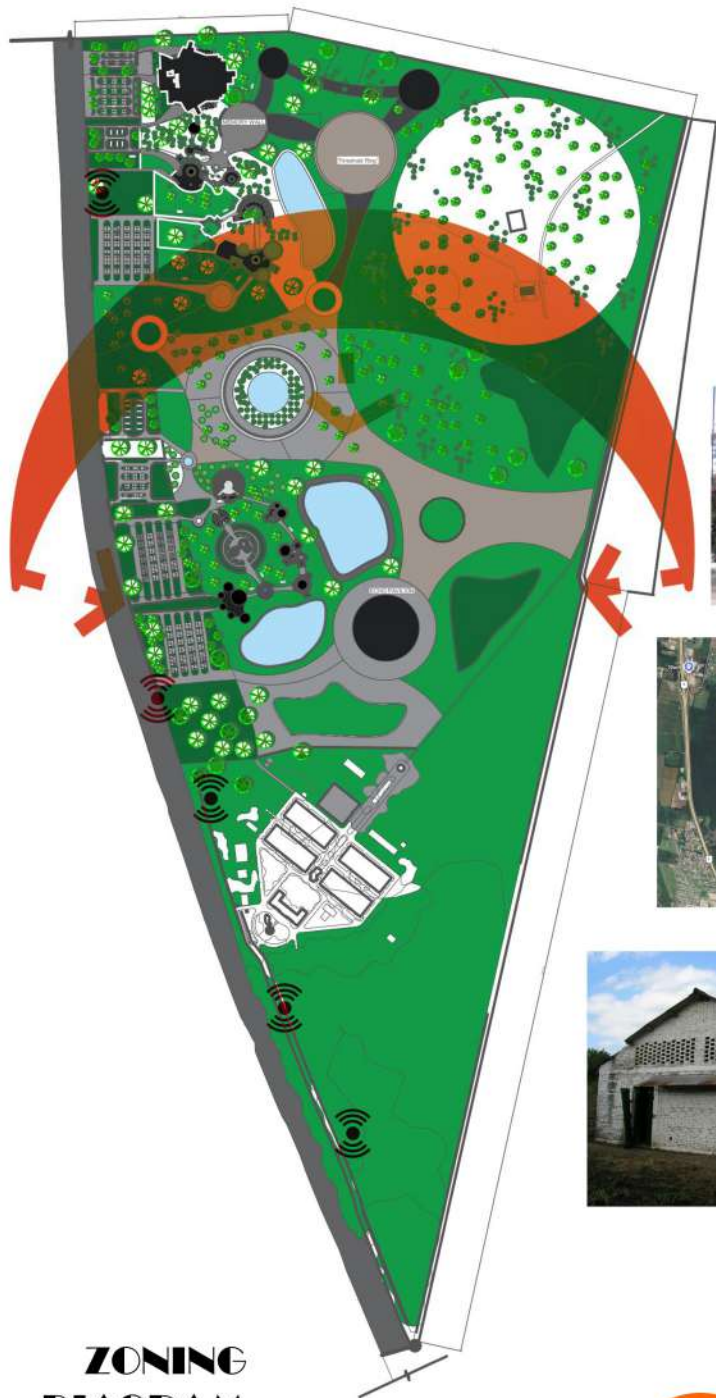
Sensory landscapes enrich user experience through texture, fragrance, and visual stimulation, while pollinator gardens within memory plazas enhance biodiversity in carefully controlled zones that ensure visitor comfort and accessibility.



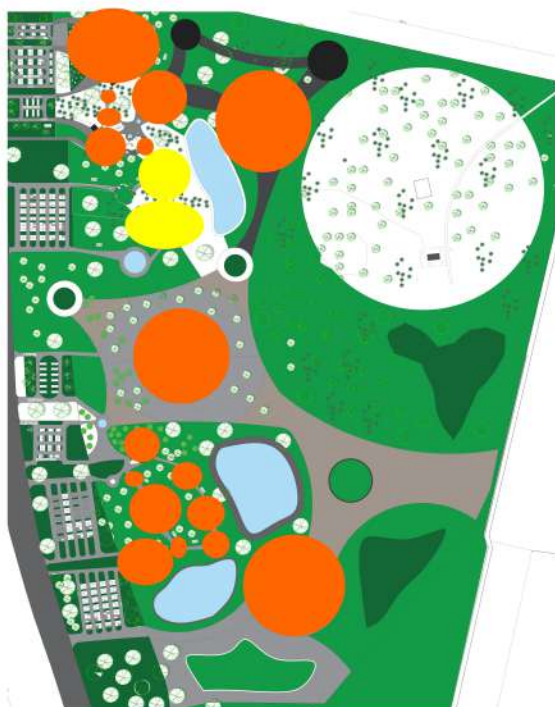
| TYOLOGY              | AREA |
|----------------------|------|
| MEMORY PLAZA         | 2500 |
| MEMORIAL ART GALLERY | 1500 |
| ADMINISTRATION       | 1000 |
| AUDIOVISUAL SHOWROOM | 500  |
| COMMERCIAL PREMISES  | 1000 |
| SHADE HOUSE          | -    |
| CLASSROOM COMPLEX    | 1500 |
| CONFERENCE COMPLEX   | 2500 |
| AMPHITHEATRE         | 1000 |
| EXHIBITION PAVILION  | 1500 |

119.7 HECTARE  
295.8 ACRE  
1196768.7 SQ.M

ALL DIMENSIONS ARE IN METER  
**SCALE : 1:2000**



## ZONING DIAGRAM



## Accessibility Analysis

### Vehicular Access

**Strong access from:**

- Main highway
- Urban grid roads
- Secondary neighborhood roads

**Strength**  
Easy regional connectivity  
Public arrival visibility

**Weakness**  
Traffic congestion risk  
Noise pollution



## Macro Context Analysis

**Location**

Site located in the metropolitan region of San Miguel de Tucumán

**Situated between:**

- Dense residential urban blocks
- Major roadway/highway connection
- Large green vegetation zone/open land
- Regional Character

San Miguel de Tucumán is known as the "Garden of the Republic" because of its vegetation, subtropical climate, and fertile landscape.

**Climate**

The city has a humid subtropical climate:

- Hot humid summers
- Mild winters
- Heavy rainfall mainly in summer months
- Strong solar exposure
- Warm prevailing winds

**Average climatic conditions:**

- Annual temperature ~ 19–20°C
- Summer temperature can exceed 40°C
- Annual rainfall ~ 850–1000 mm

## Vegetation & Ecology Analysis

**Existing Ecological Features**

- Dense vegetation cover
- Possible wetland/moist soil pockets
- Natural biodiversity corridor
- Urban heat reduction zone

Research on Tucumán shows vegetation strongly influences thermal comfort and reduces urban heat island effects.

**Design Opportunities**

- Preserve green edge
- Can create ecological landscape buffer
- Outdoor recreation spaces
- Rainwater harvesting zones
- Eco-swales and retention ponds

The Living Network interprets the memorial landscape as a system of interconnected pathways inspired by neural synapses.

Curved walkways act as links between fragments of memory, guiding visitors through spaces of absence and reflection. The "unseen" refers to lives erased yet not forgotten—traces that persist within the landscape.

Activated by movement, the network becomes living, where each journey reconnects memory, loss, and collective remembrance

# THE LIVING NETWORK : TRACES OF THE UNSEEN

## Existing Site Character

The site currently reads as an isolated and underutilized landscape mass. Dense vegetation, vacant patches, and informal ecological growth patterns create a hidden natural environment within the urban fabric.

Instead of removing this identity, the proposal transforms the "unseen" qualities into experiential landscapes.

## Movement & Connectivity

The abandoned site originally lacked social and spatial connectivity. The proposal introduces a network of landscape pathways linking sensory gardens, plazas, ecological zones, and gathering spaces.

This transforms isolated land into an interconnected public experience—a "living network" that encourages exploration, pause, reflection, and interaction.

## Climate & Environmental Response

The large green cover already present on site supports natural decline and wind movement.

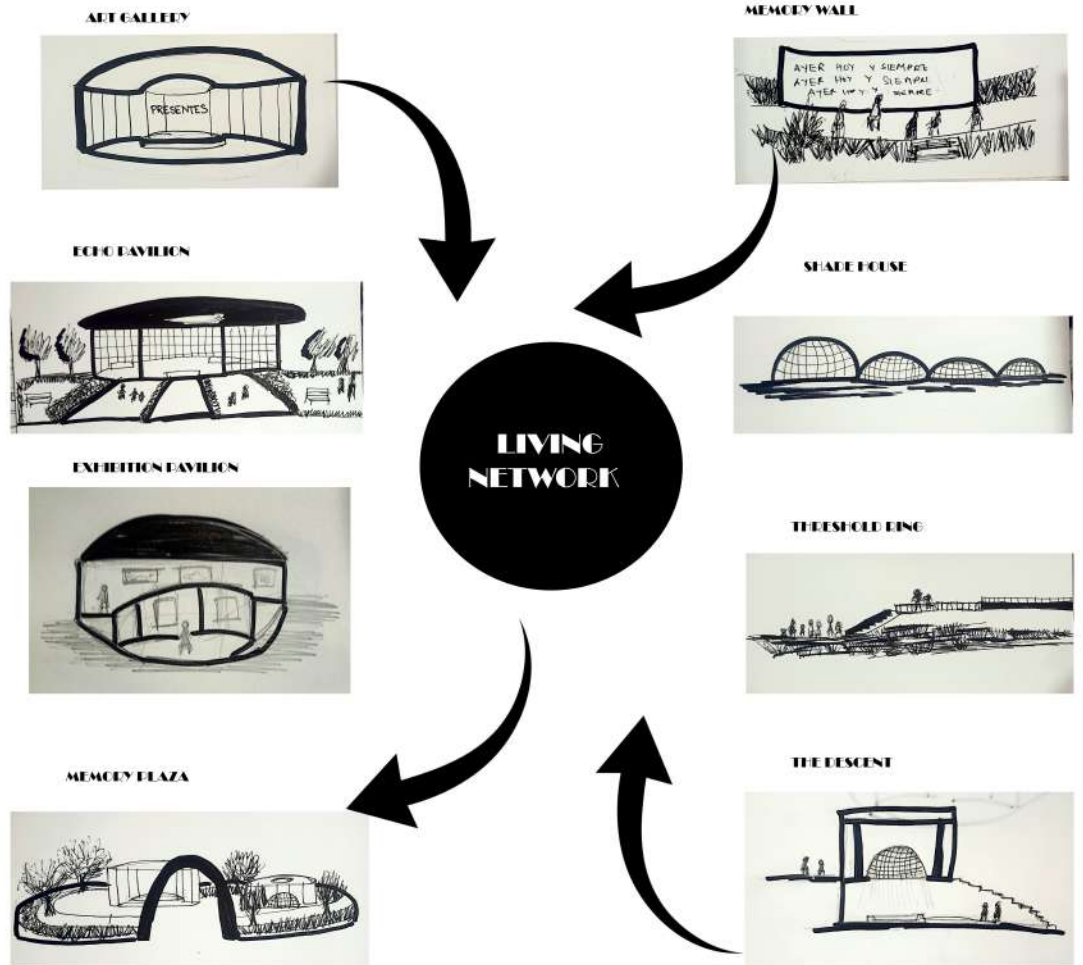
The design preserves this ecological layer while introducing shaded walkways, water-retaining landscapes, and native planting systems that improve thermal comfort and environmental resilience.

## Landscape as Experience

Pathways are designed as immersive journeys where users experience:

Texture through layered planting  
Fragrance from flowering native species  
Sound from wind-responsive vegetation and water elements  
Seasonal variation through changing colors and blooms

This creates calm, therapeutic, and emotionally engaging spaces throughout the site.

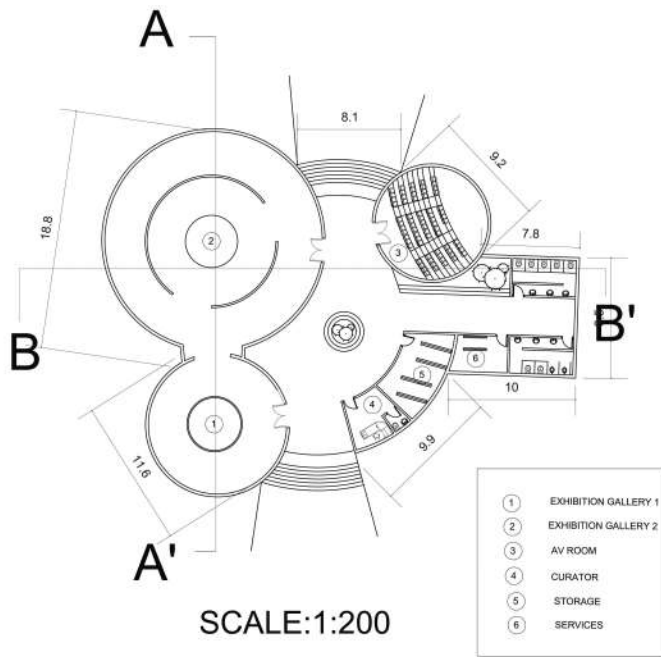








## FLOORPLAN



## INTERIOR VIEWS

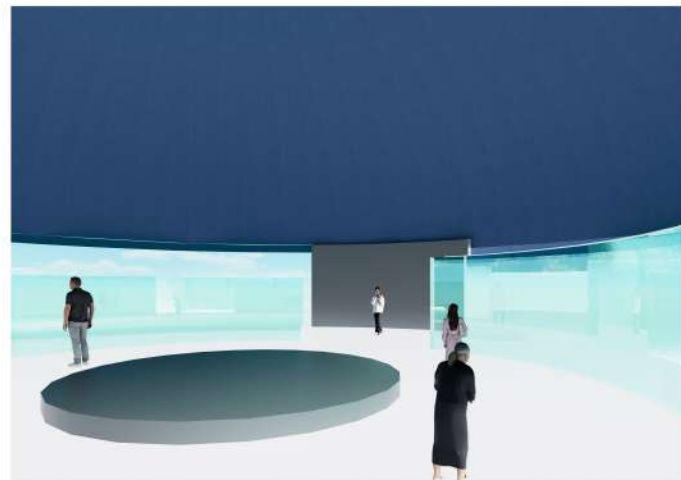
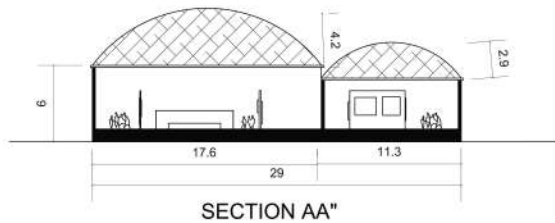


**EXHIBITION GALLERY 1**

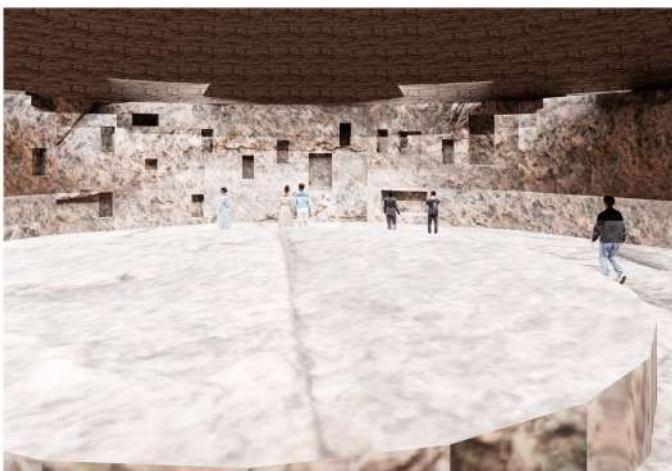
**This memory chamber acts as a transition between trauma and healing. After experiencing the emotional intensity of the Eirly War exhibition, visitors enter a calm immersive space of blurred reflections, soft light, and silence.**

**Inspired by caves and fragmented memories, the pavilion evokes loss, reflection, and collective healing through atmosphere rather than direct narration.**

## SECTIONS

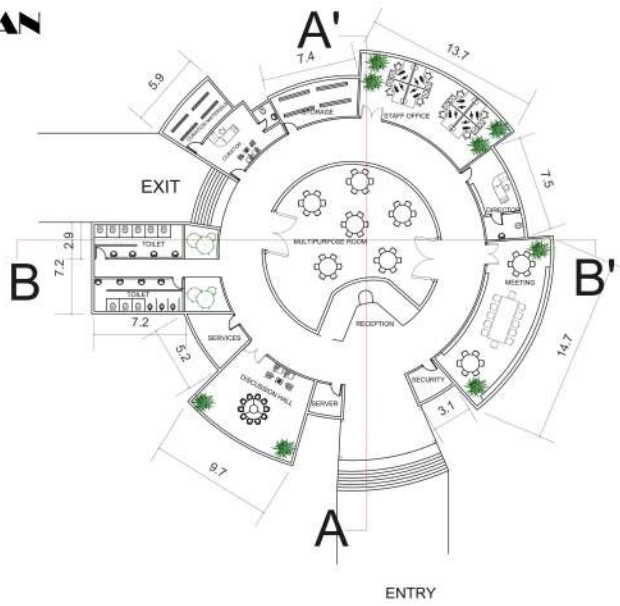


## EXHIBITION GALLERY 2

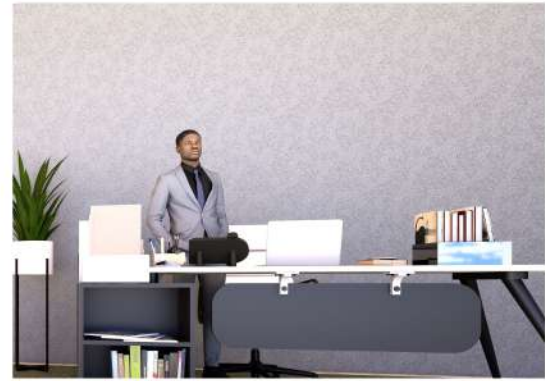




## FLOOR PLAN



## INTERIOR VIEWS



**DIRECTOR ROOM**

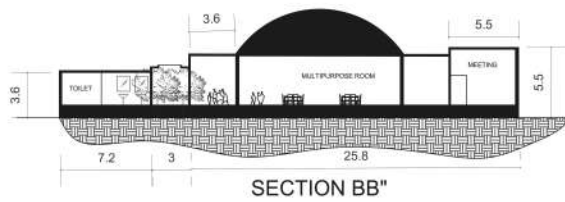


**DISCUSSION HALL**

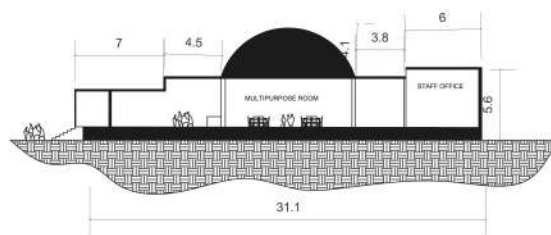


**MEETING ROOM**

## SECTIONS



**SECTION BB''**



**SECTION AA''**

## EXTERIOR VIEW

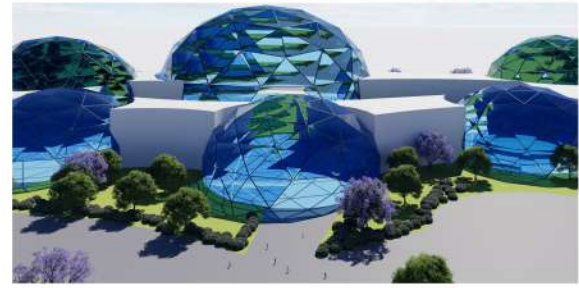
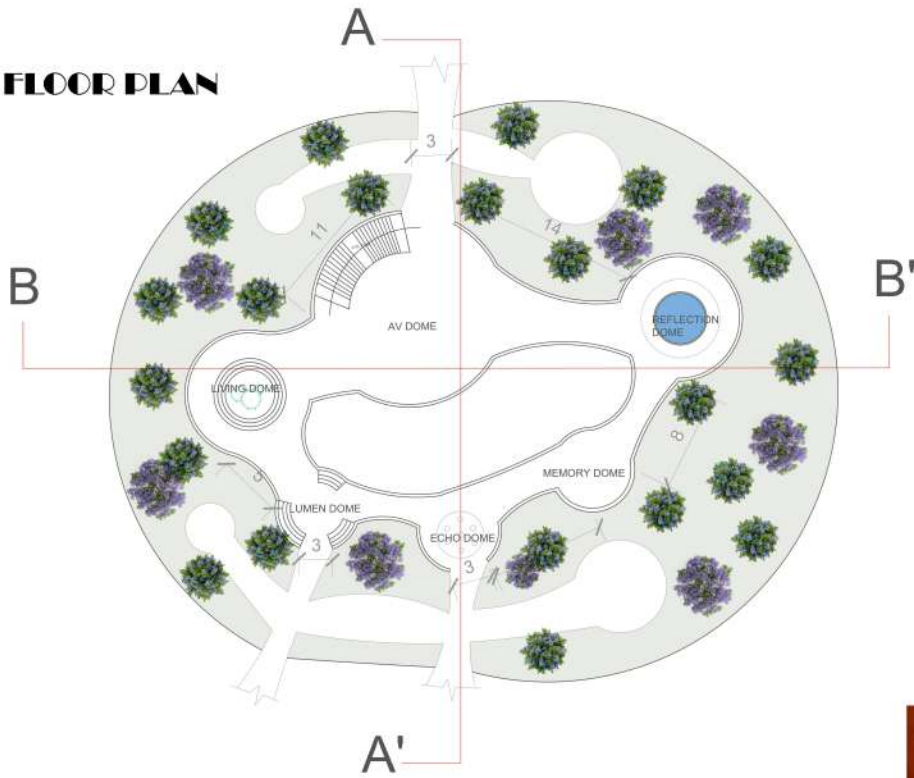


**STAFF OFFICE**

# SCALE: 1:200

[MALAEVIZHI|230101601019]

## FLOOR PLAN

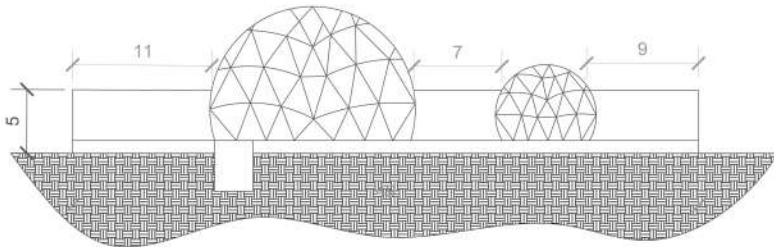
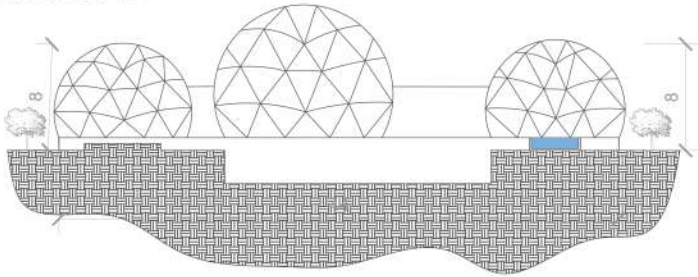


WEST SIDE VIEWS

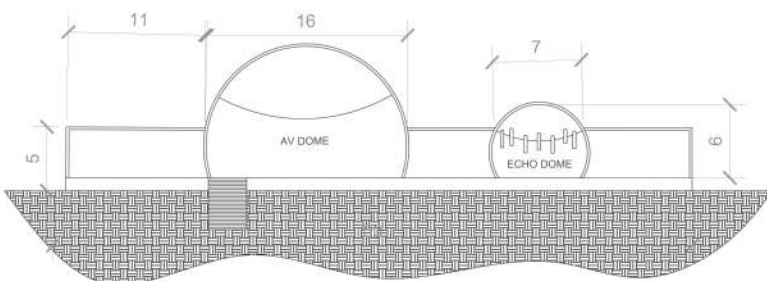
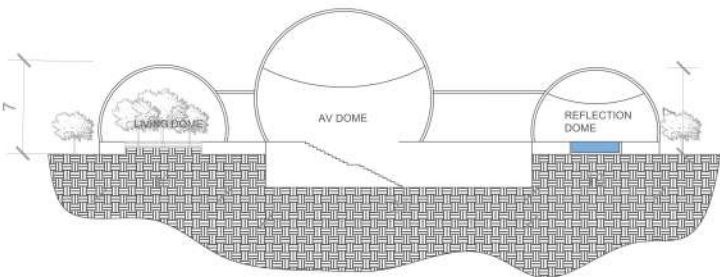


DOMES OF MEMORY

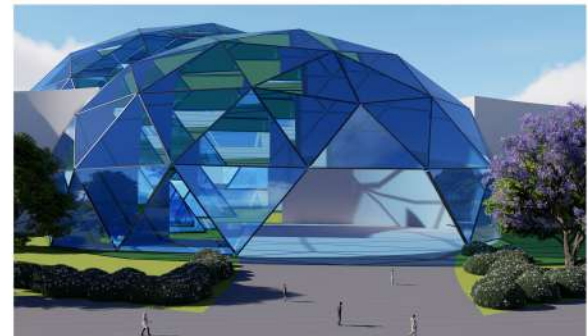
## ELEVATIONS



## SECTIONS



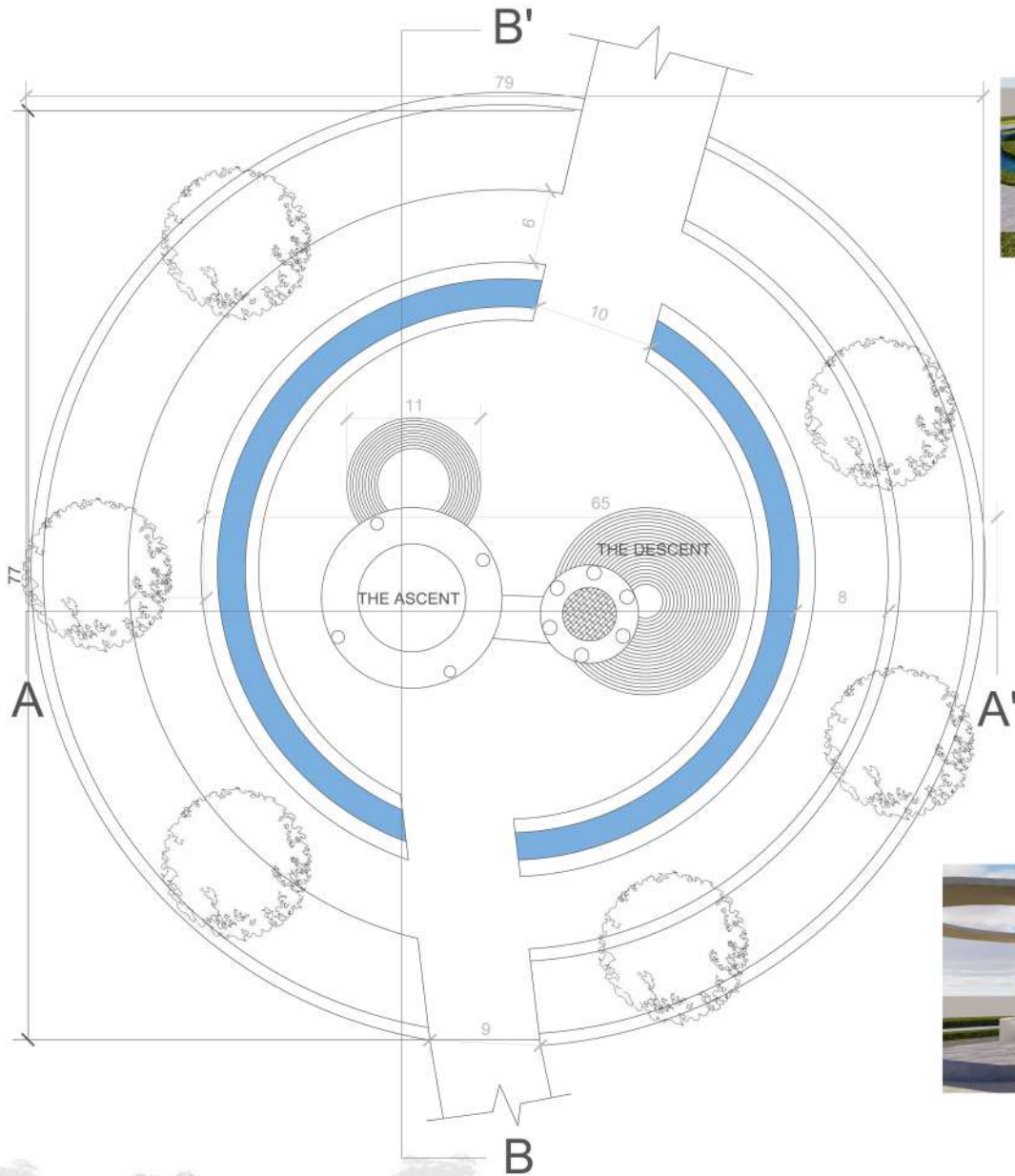
The shade house is conceived as a journey through interconnected experiential domes, where memory is explored through light, projection, reflection, sound, and nature. Each dome creates a distinct atmosphere — from suspended memories and immersive audiovisual experiences to reflective water spaces and nature courts. Together, the domes transform the shade house into an immersive memorial landscape of remembrance, reflection, and renewal.



ENTRANCE AND EXIT VIEW

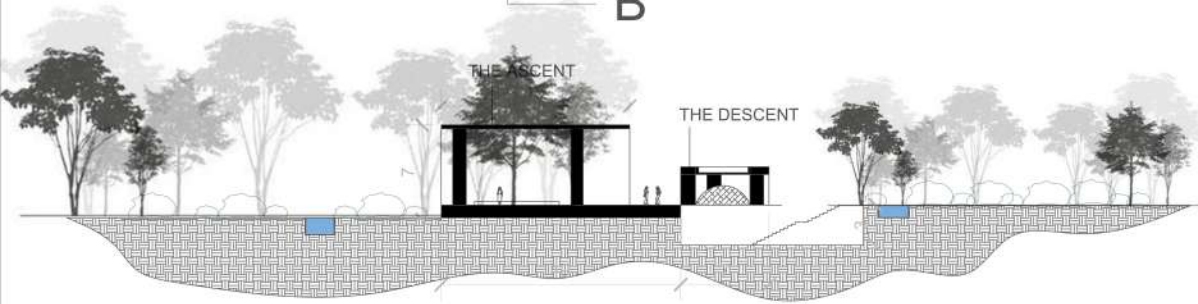


# ARSENAL MEMORY PARK - MEMORY PLAZA

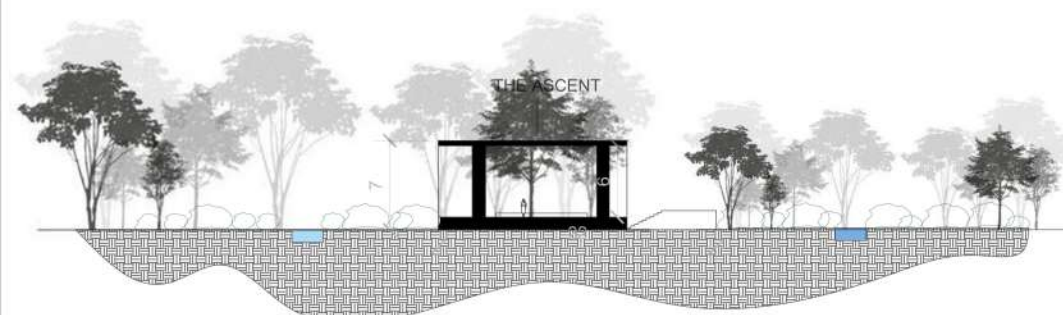


**The Memory Plaza is conceived as a spatial journey between ascent and descent, symbolizing the emotional transition from grief toward healing and reflection.**

**The taller circular structure represents ascent — an open and uplifting space that invites light, pause, and collective gathering, creating a sense of release and renewal.**



SECTION AA''



SECTION BB''



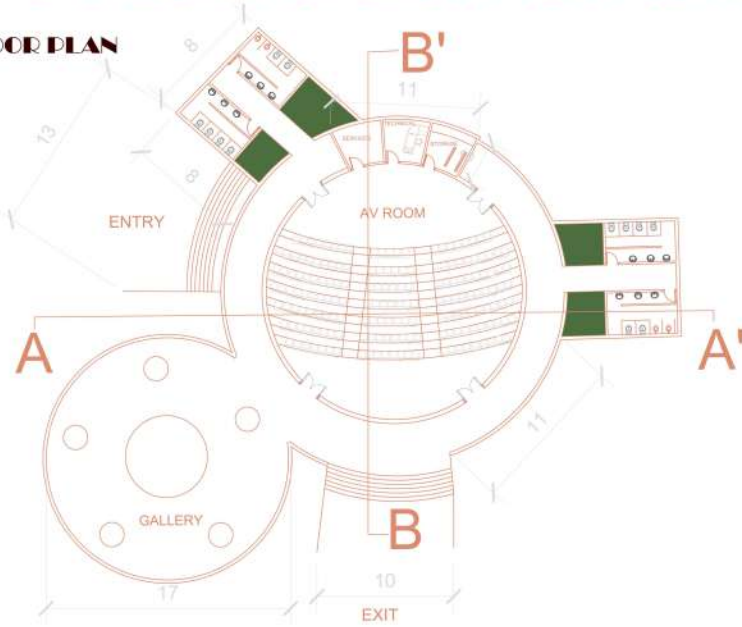
**SCALE: 1:200**

# ARSENAL MEMORY PARK

## - IMMERSIVE AUDIOVISUAL SHOWROOM

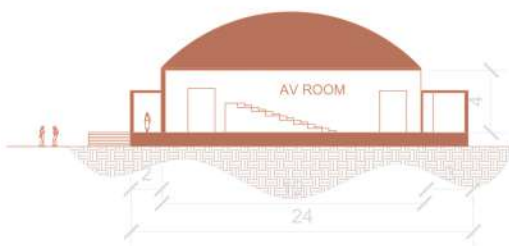
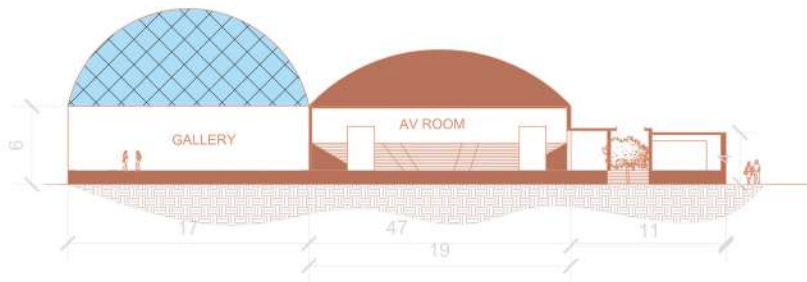


### FLOOR PLAN



SCALE:1:200

### SECTIONS



### VOID OF REFLECTIONS

Inspired by the silence after tragedy, the space uses translucent cylindrical forms, diffused glow, and shifting reflections to symbolize fading memories, emotional isolation, and the unseen presence of collective loss.

Unlike the enclosed echoing warmth of the first showroom, this space evokes introspection through contrast — a cold, atmospheric void where light becomes the only narrative element guiding the user's emotional journey.



### CHAMBER OF ECHOES

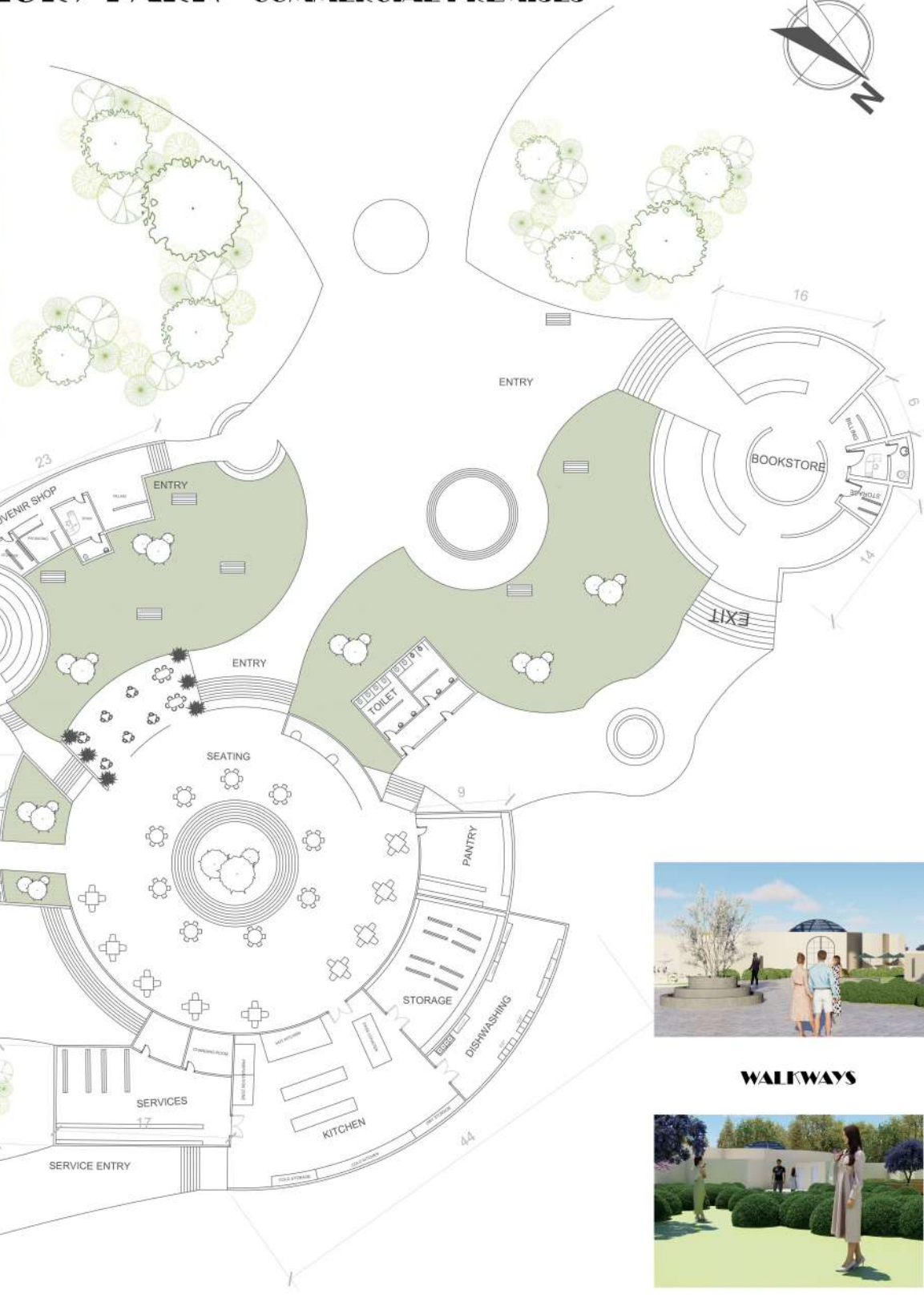
The Chamber of Echoes is envisioned as an immersive memorialized audiovisual space where sound, light, and textured enclosure preserve the emotional resonance of tragedy.

Inspired by the lingering echoes of collective loss, the cave-like spatial character symbolizes memory embedded within time, while suspended acoustic forms represent fragmented voices reverberating through space.

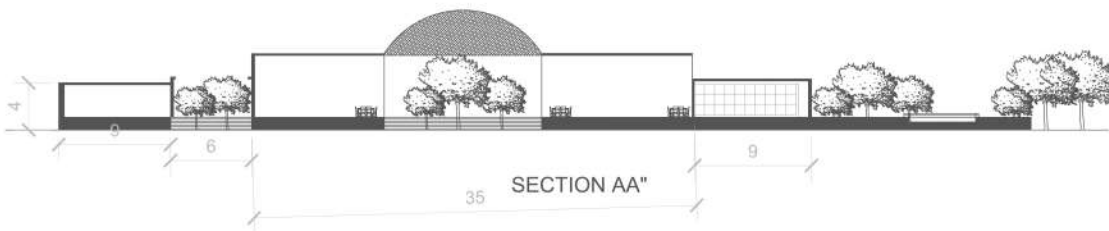
# ARSENAL MEMORY PARK - COMMERCIAL PREMISES



**OUTDOOR DINING**



**WALKWAYS**



**"The design evolves as a living network where knowledge, memory, and interaction are interconnected through fluid movement and shared public spaces."**

**The bookstore represents knowledge, the souvenir shop represents memory and identity, and the cafeteria represents social interaction.**

**Together, they create a continuous experiential loop that encourages gathering, exploration, and cultural exchange."**

**SCALE:1:200**

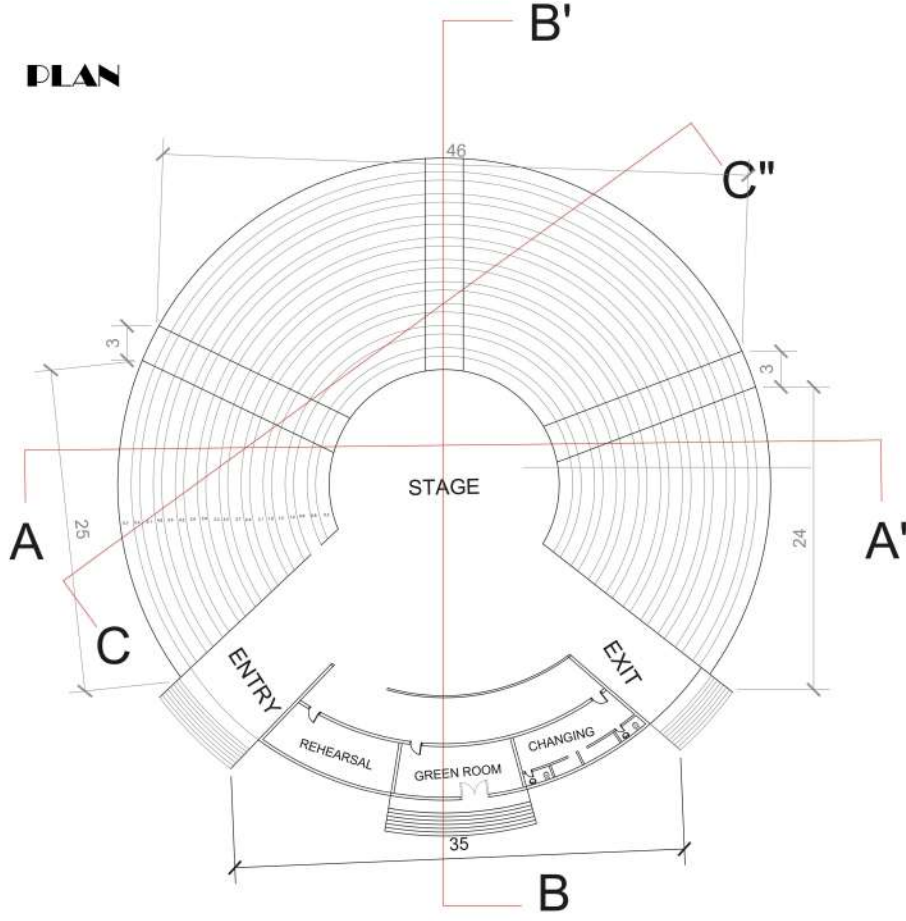


# ARSENAL MEMORY PARK - AMPHITHEATRE



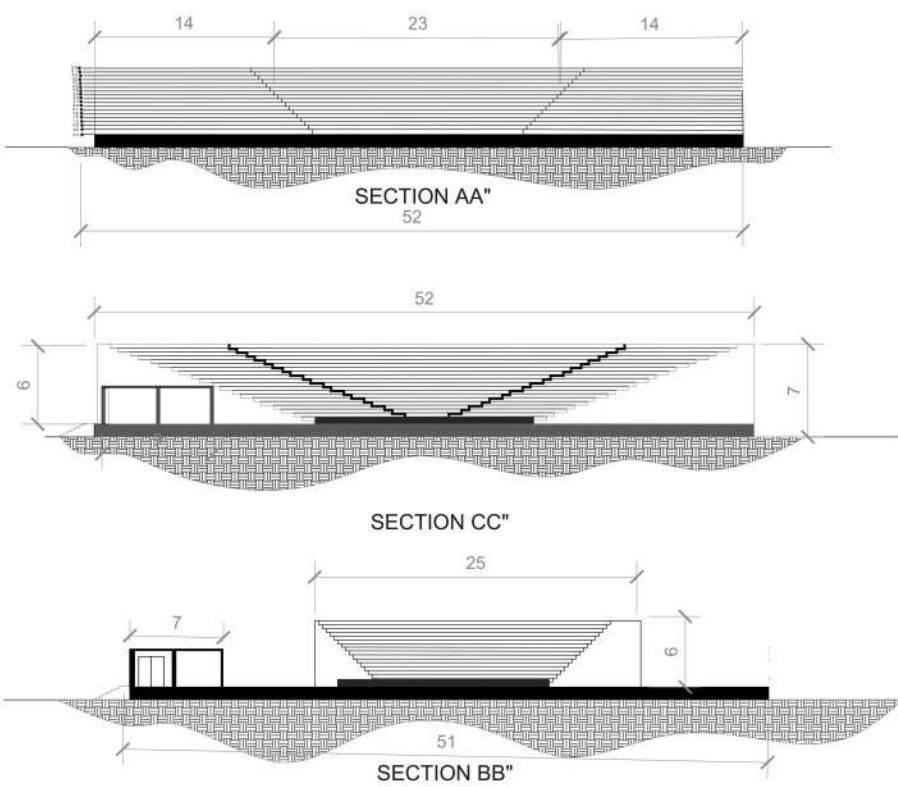
## The Oculus of Memory

### PLAN



"The Oculus of Memory is conceived as a contemporary reinterpretation of the Greek amphitheater — a space where architecture frames both performance and remembrance. The enclosing form creates a protective emotional chamber, while the open skylight symbolizes connection to the sky, light, and collective healing. As visitors descend into the amphitheater, they move from the outer world into a contemplative vessel of echoes, silence, and shared memory."

### SECTIONS



### AMPHITHEATRE



### ENTRANCE



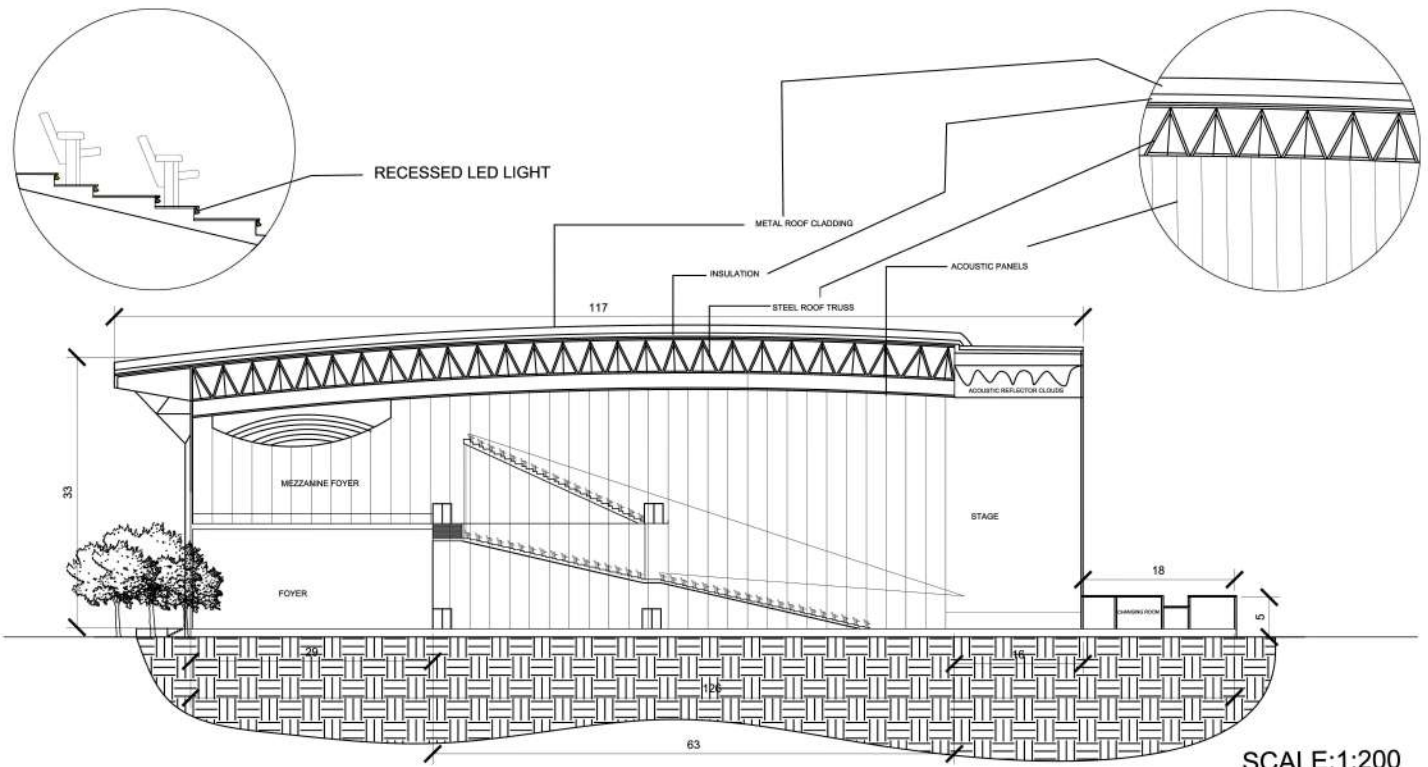
SCALE:1:200



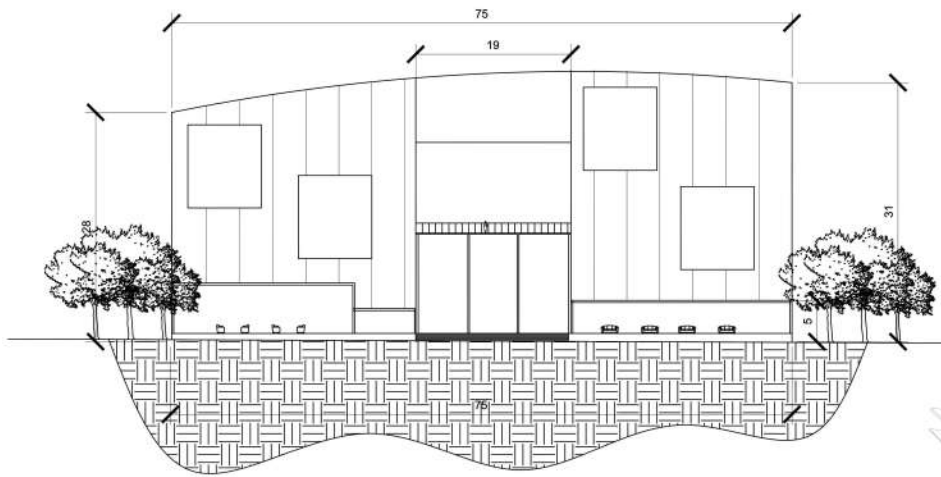
# ARSENAL MEMORY PARK - CONCERT HALL SECTIONS

[MALARVIZHI.G|230101601019|B.ARCH III YR A"SECTION|

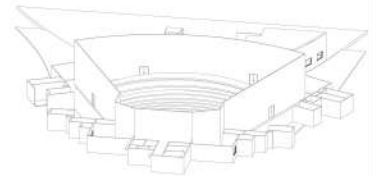
ALL DIMENSIONS ARE IN METRES



SECTION BB"



SECTION AA"



## INTERIOR VIEWS



LOUNGE



VIP LOUNGE



ADMIN ROOM