

ARSENAL MEMORY PARK - CONCEPT AND ZONING SHEET

CONCEPT - DISJUNCTIVE SENSATIONS

THE ARSENAL IS A SITE OF **FRAGMENTATION**. MEMORY HERE IS NOT A CONTINUOUS STORY; IT IS A **SERIES OF SHOCKS**. USING THE **THEORY OF DISJUNCTION**, THIS PROJECT LAYERS AN AUTONOMOUS SYSTEM OF **SENSORY 'FOLLIES'** OVER THE MILITARY GRID. THE ARCHITECTURE DOES NOT SEEK TO HEAL THE SITE, BUT TO WITNESS IT THROUGH THE **COLLISION OF SPACE, EVENT, AND MOVEMENT**

THE THREE SYSTEMS :



- POINTS (SENSORY NODES): 10M X 10M CUBES OF SENSORY INTENSITY.
- LINES (THE OOZE): A CINEMATIC PROMENADE THAT IGNORES THE SITE'S HIERARCHY
- SURFACES (THE VOIDS): THE RAW GROUND OF TUCUMÁN, LEFT TO NATURE AND FORENSIC MEMORY.

1. THE POINTS (THE SENSORY FOLLIES)

SIGHT (THE WITNESS): A VERTICAL WALKWAY WITH NARROW APERTURES THAT ONLY ALLOW YOU TO SEE THE "PIT" (THE EVIDENCE) FROM SPECIFIC ANGLES.

SOUND (THE RESONANCE): A HEAVY CONCRETE BOX PARTIALLY BURIED NEAR THE BARRACKS THAT AMPLIFIES THE WIND.

TOUCH (THE TEXTURE): A SEQUENCE OF WALLS WITH VARYING ABRASIVE TEXTURES (RAW CONCRETE, RUSTED STEEL).

SMELL (THE EARTH): A SUNKEN PIT EXPOSING THE RAW, DAMP SOIL OF THE ARSENAL.

TASTE (THE GATHERING): A "SOCIAL PLUG-IN" AT THE END OF THE GRID.

2. THE LINES (THE "OOZE" / CINEMATIC PROMENADE)

THE PATH: A STEEL WALKWAY THAT "SLICES" THROUGH THE OLD ADMINISTRATION BUILDINGS AND MOVES ACROSS THE LANDSCAPE IN A ZIG-ZAG, REPRESENTING THE FRACTURED MEMORY OF THE SURVIVORS.

THE INTERSECTION: WHERE THE PATH HITS A "FOLLY," A SENSORY SHOCK OCCURS.

3. THE SURFACES (THE LANDSCAPE OF MEMORY)

THE VOID: LARGE OPEN FIELDS WHERE THE "OOZE" THINS OUT, LEAVING THE VISITOR ALONE WITH THE SCALE OF THE SITE.

THE HYDROLOGICAL SURFACE: USE THE REQUIRED WATER RETENTION BASINS AS THE "BLUE SURFACE" THAT REFLECTS THE SKY BUT REMAINS OUT OF REACH.

3. SPATIAL EXPERIENCE: THE MONTAGE

"THE VISITOR EXPERIENCES THE SITE AS A **CINEMATIC MONTAGE**. A WALK THROUGH A **SILENT BARRACK (SPACE)** IS INTERRUPTED BY A **SUDDEN RED STEEL TOWER (EVENT)** WHERE THE SMELL OF DAMP EARTH IS INTENSIFIED. THIS DISJUNCTION FORCES THE VISITOR TO ACTIVELY **RECONSTRUCT THE MEMORY OF THE SITE.**"

4. MATERIALITY OF THE "CLASH"

EXISTING: WEATHERED BRICK, CRUMBLING MORTAR, OVERGROWN WEEDS.

NEW INFILTRATION: INDUSTRIAL RED STEEL, GLASS "SLITS," AND SMOOTH-CAST CONCRETE.

SITE ANALYSIS :

LOCATION & CONTEXT

LOCATED IN **NORTHWESTERN ARGENTINA**, ACTING AS A TRANSITION BETWEEN **SUBTROPICAL NORTH AND TEMPERATE SOUTH**

SURROUNDED BY SIERRA DEL **ACONQUIJA MOUNTAINS** IN THE WEST AND **FERTILE PLAINS** IN THE EAST

TOPOGRAPHY

SITE LIES AT APPROX **470 M ELEVATION** WITH NEARBY HILLS AND STEEP TERRAINS

REGION SHOWS **FLAT PLAINS + DRAMATIC MOUNTAIN VARIATIONS** NEARBY

CLIMATE

HUMID SUBTROPICAL CLIMATE (CWA)

TEMPERATURE RANGE: SUMMER: -30-31°C
WINTER: -12-18°C

VEGETATION & ECOLOGY

REGION HAS: FORESTS (YUNGAS)
AGRICULTURAL LAND
SHRUBS + GRASSLAND

LAND USE & SURROUNDINGS

MIX OF:
URBAN FABRIC
AGRICULTURAL LAND
NATURAL LANDSCAPE

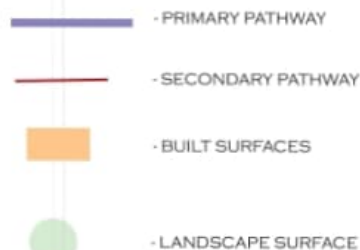
WIND & MICROCLIMATE

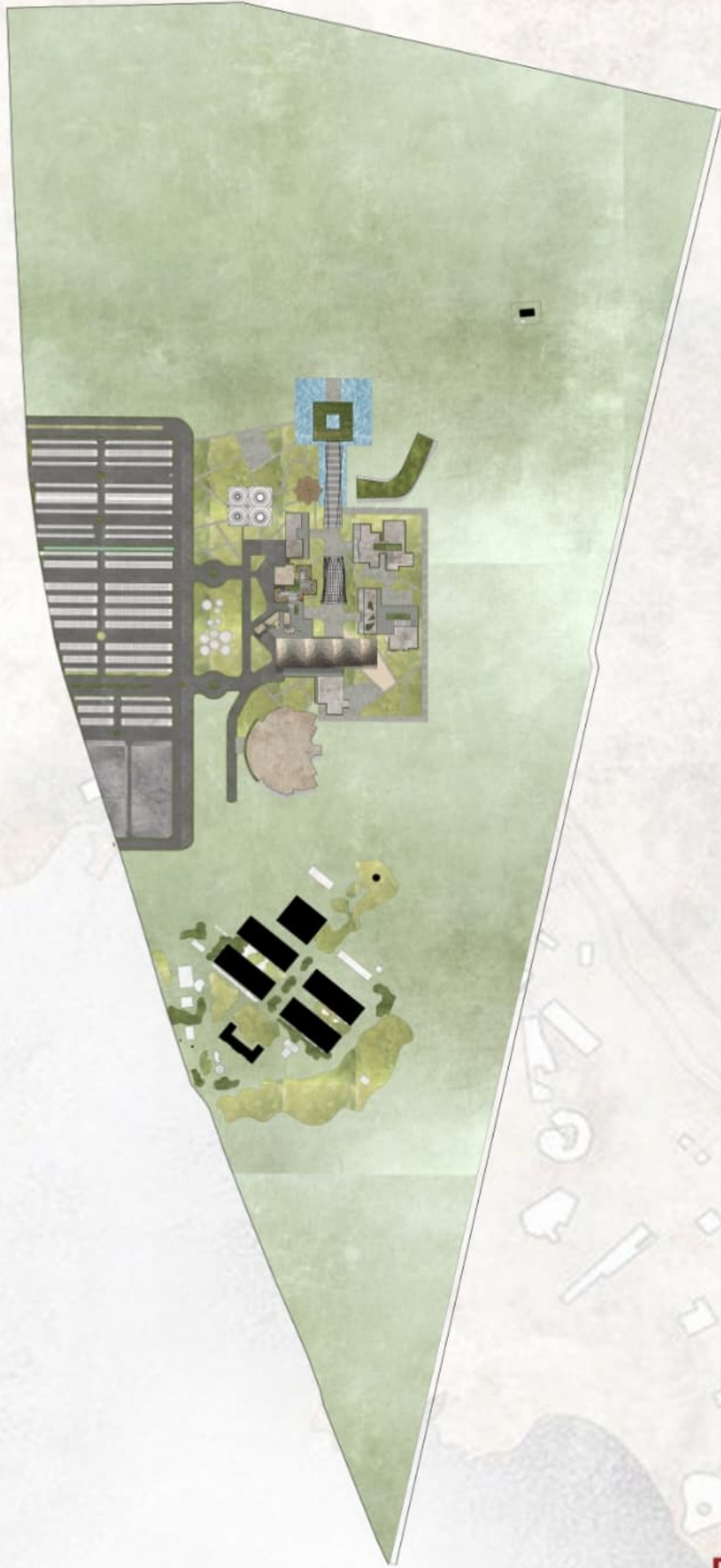
MODERATE WIND SPEEDS (~7-10 KM/H)

MOIST AIR FROM EASTERN PLAINS MEETS
MOUNTAINS + RAINFALL

SUN PATH

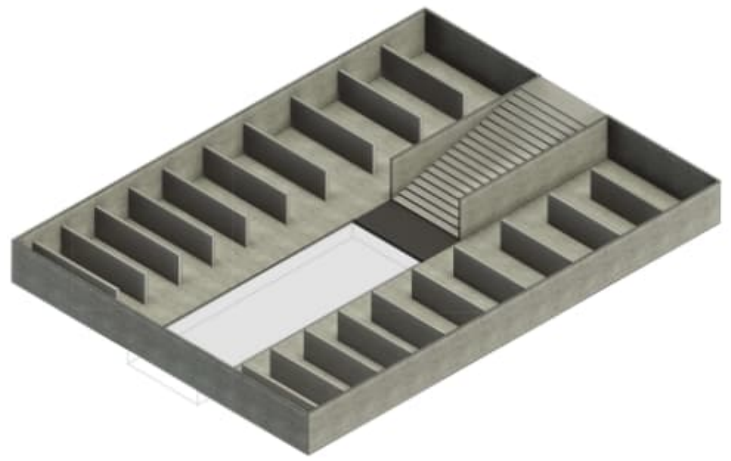
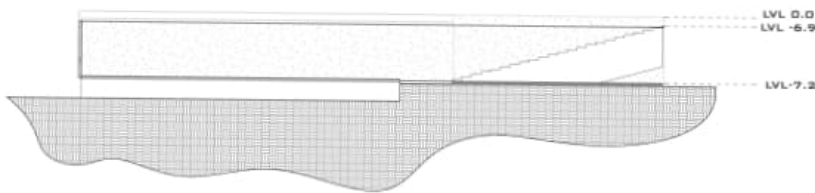
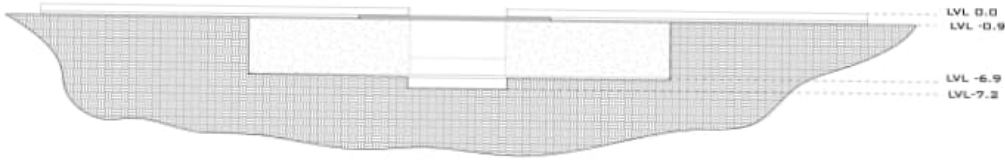
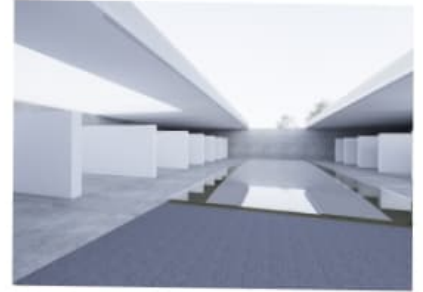
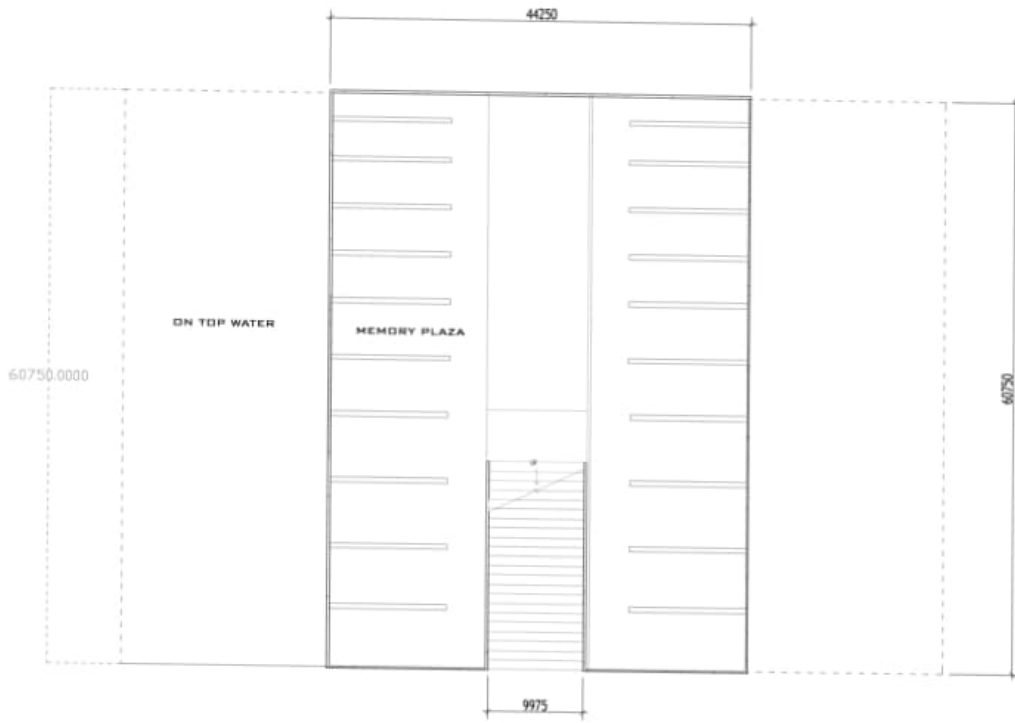
LOCATED IN SOUTHERN HEMISPHERE
SUN MOVEMENT:
SUN MOSTLY FROM NORTH SIDE
STRONG SUMMER SUN



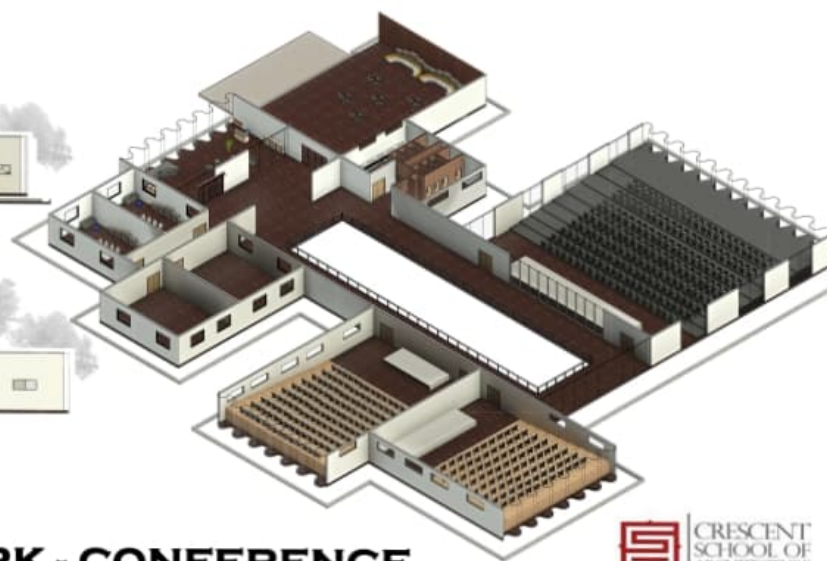
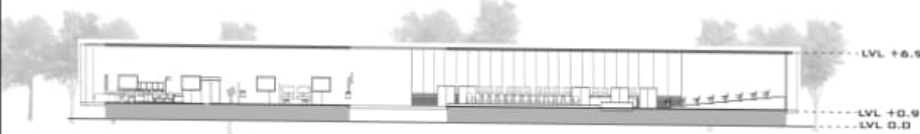
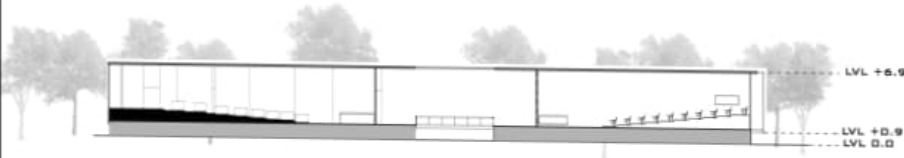
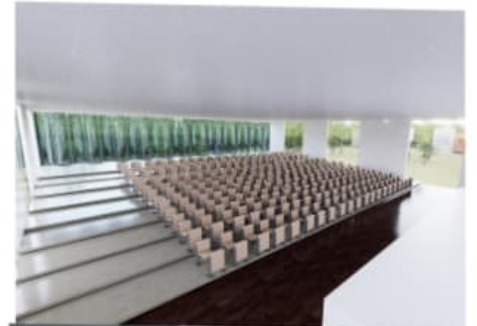
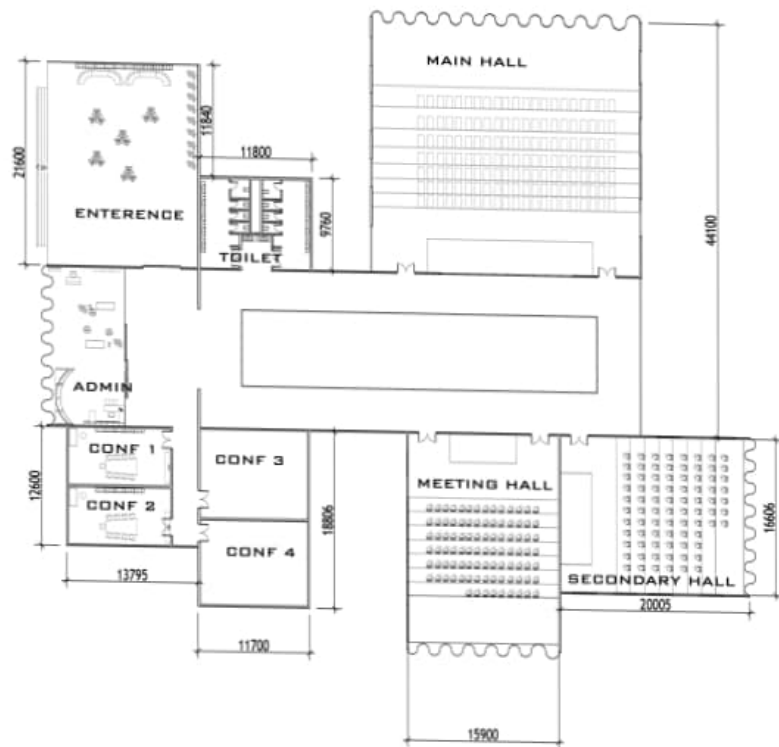


ARSENAL MEMORY PARK - SITE PLAN





ARSENAL MEMORY PARK - MEMORY PLAZA

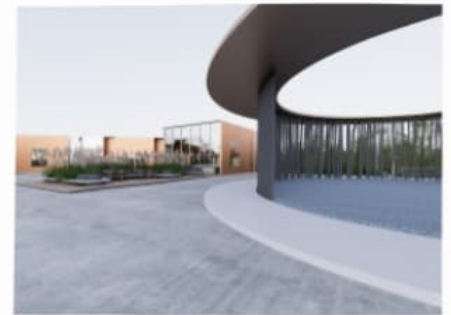
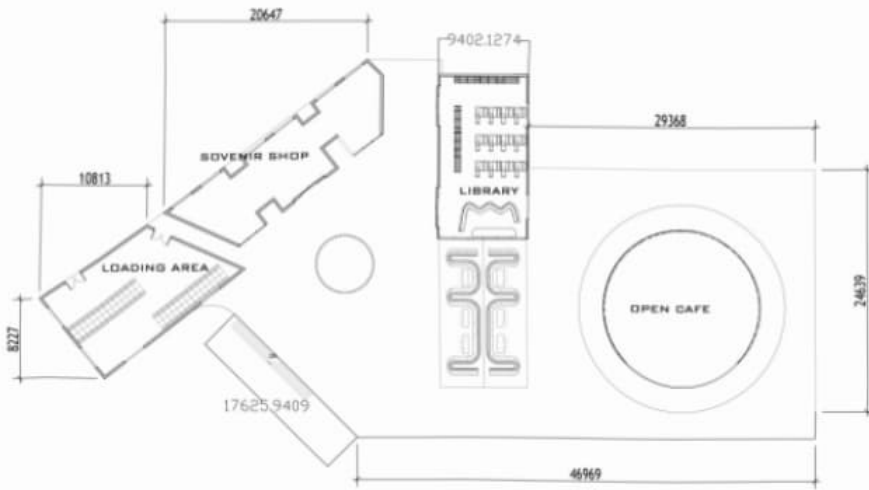


ARSENAL MEMORY PARK - CONFERENCE

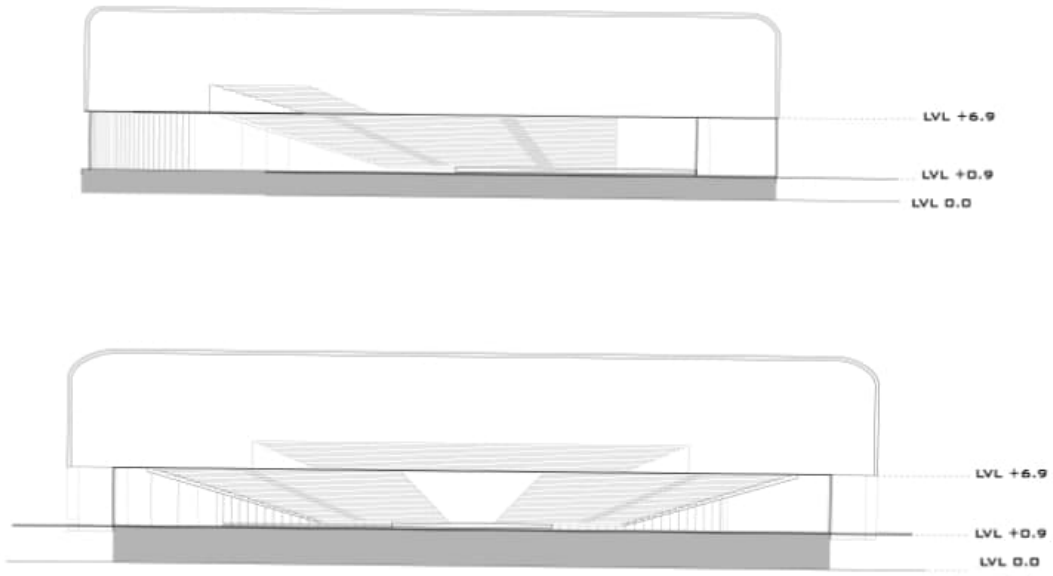


ARSENAL MEMORY PARK - KEY PLAN

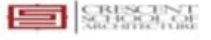




ARSENAL MEMORY PARK - COMMERCIAL



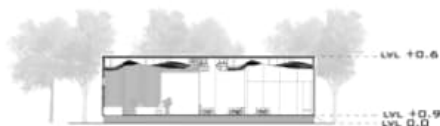
ARSENAL MEMORY PARK - CONCERT HALL SECTION



LIVYA E.P. | 230101601016 | B.ARCH III YEAR | SAC



PLAN



SECTION AA'



EXTERIOR VIEWS



SECTION BB'



WEST ELEVATION

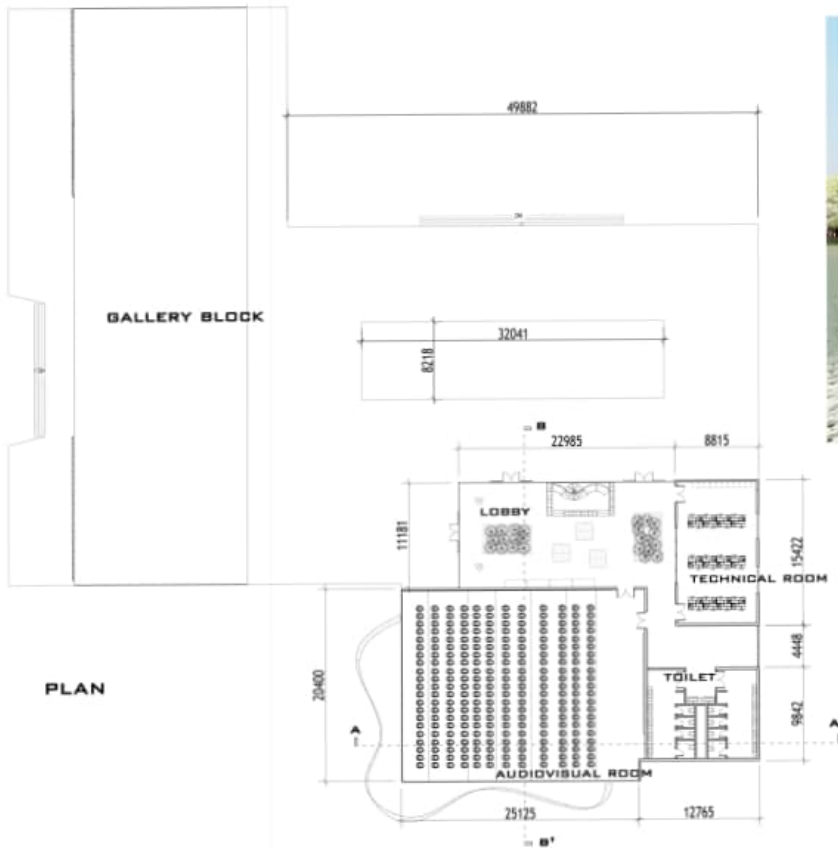


SOUTH ELEVATION

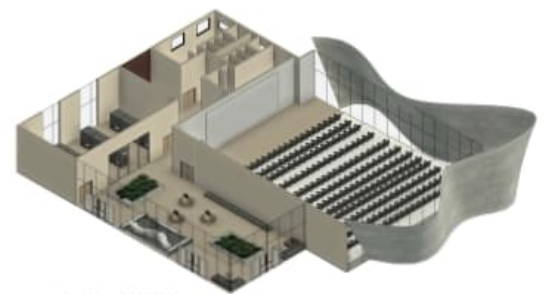


ISOMETRIC VIEW

ARSENAL MEMORY PARK - CAFETERIA



EXTERIOR VIEW



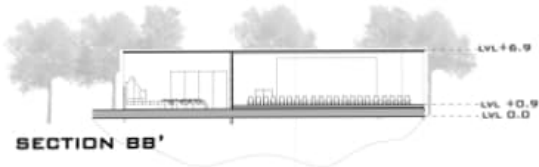
ISOMETRIC VIEW



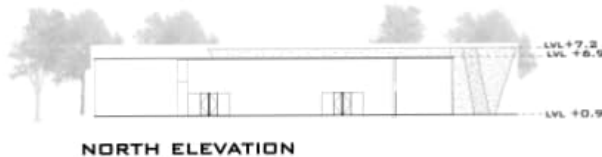
SECTION AA'



EAST ELEVATION



SECTION BB'



NORTH ELEVATION



WEST ELEVATION

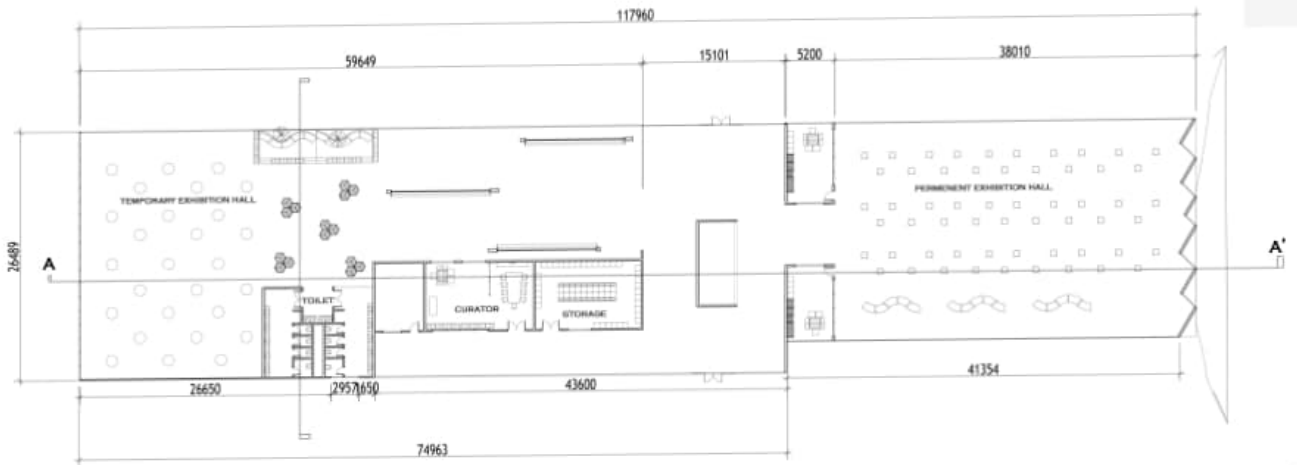


INTERIOR VIEWS

ARSENAL MEMORY PARK - AUDIOVISUAL SHOWROOM



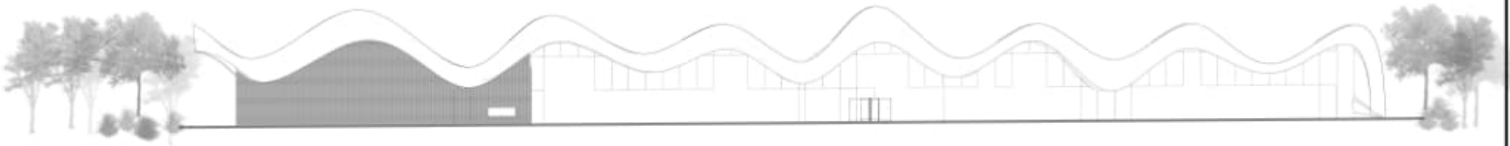
CRESCENT
SCHOOL OF
ARCHITECTURE



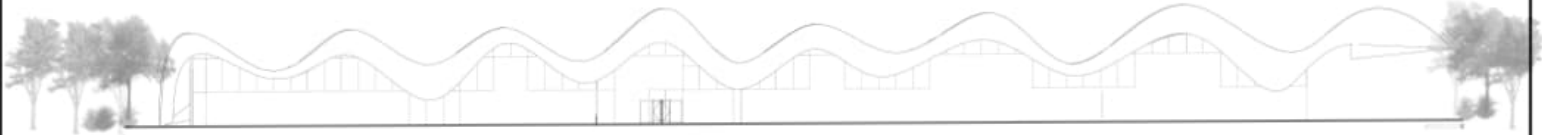
PLAN



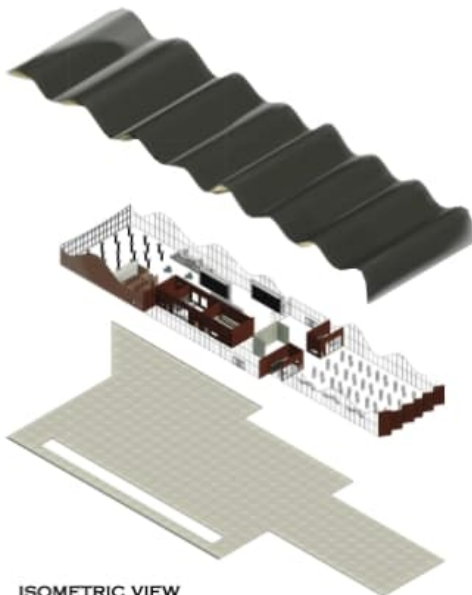
SECTION AA'



SOUTH ELEVATION



NORTH ELEVATION



ISOMETRIC VIEW

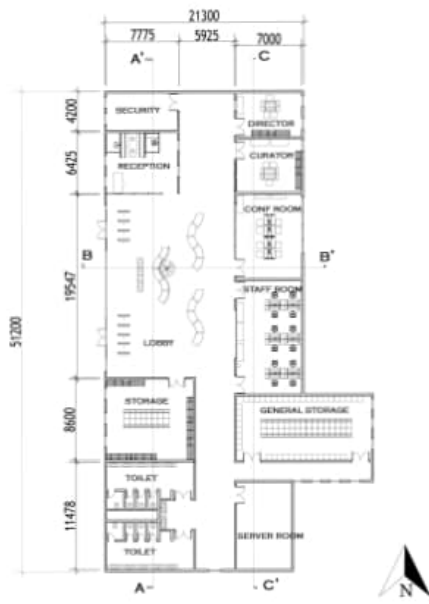


EXTERIOR VIEWS

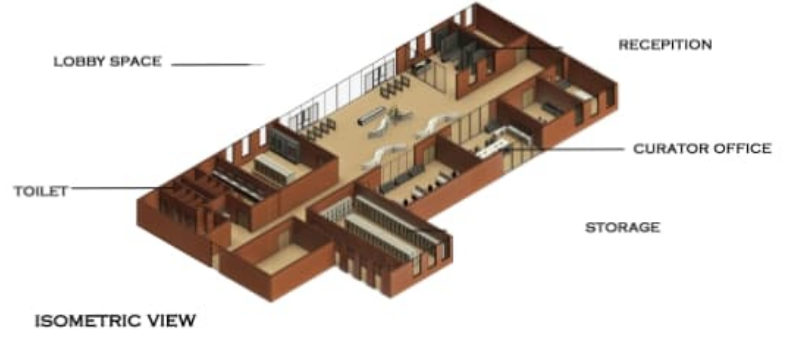


INTERIOR VIEW

ARSENAL MEMORY PARK - EXHIBITION HALL



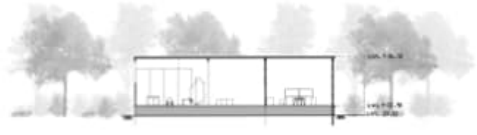
PLAN



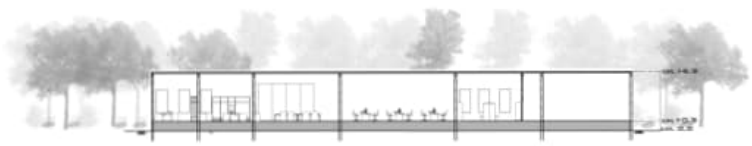
ISOMETRIC VIEW



SECTION AA'



SECTION BB'



SECTION CC'

EAST ELEVATION

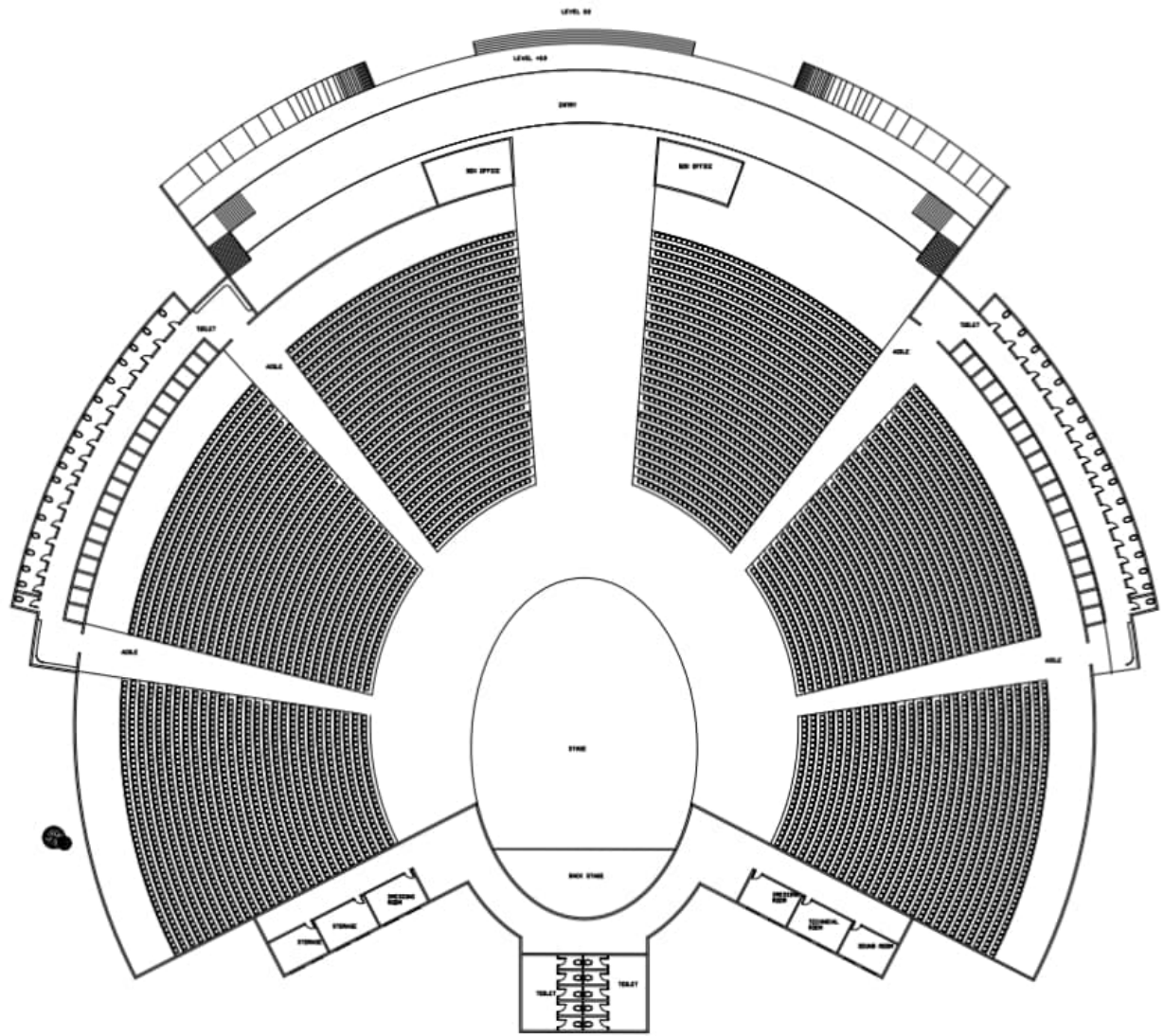


INTERIOR VIEWS



EXTERIOR VIEWS

ARSENAL MEMORY PARK - ADMIN OFFICE



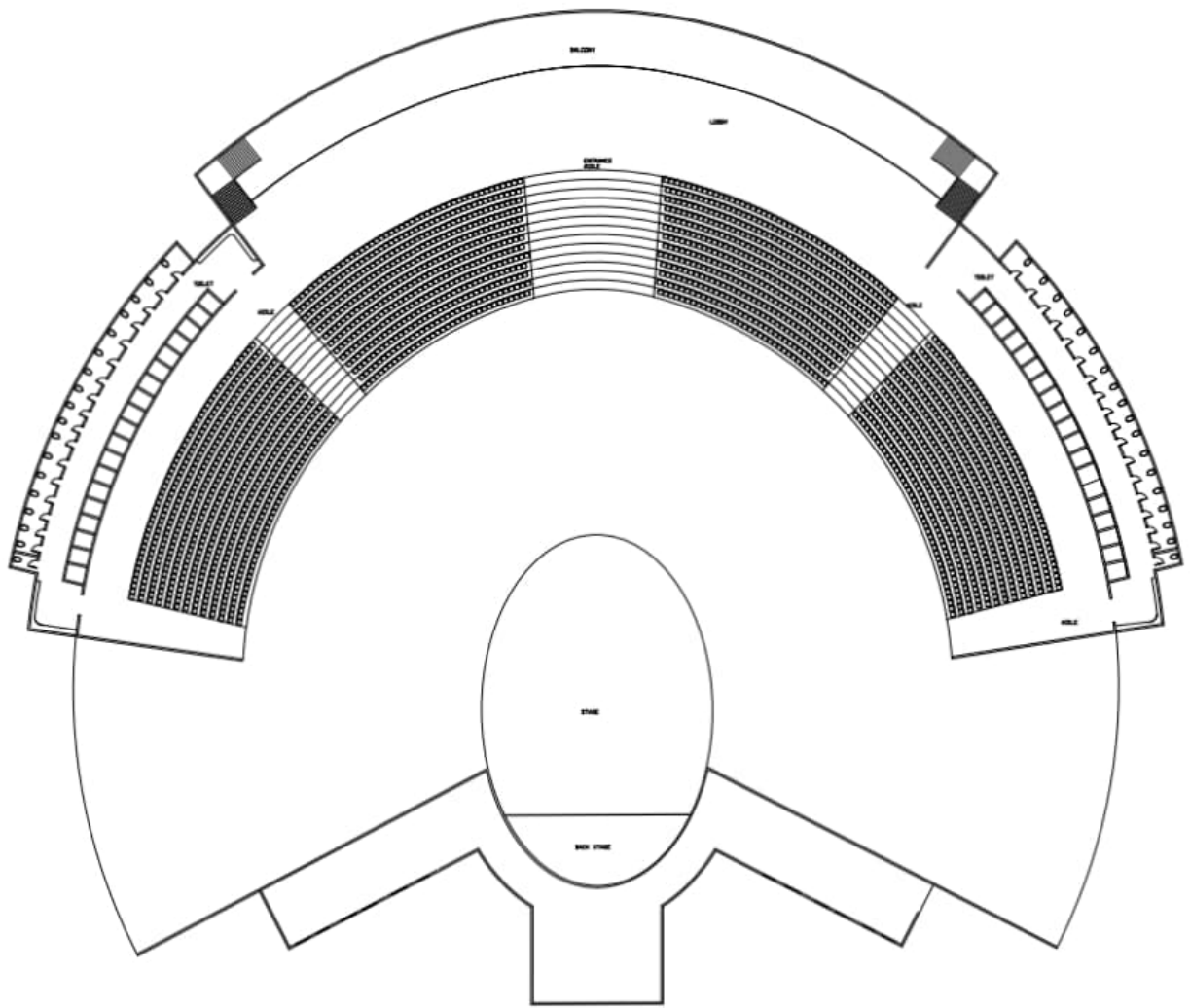
GROUND FLOOR PLAN

ARSENAL MEMORY PARK - CONCERT HALL



SCALE 1:200

LIVYA E P | 230101601016 | BARCH III YR



FIRST FLOOR PLAN

ARSENAL MEMORY PARK - CONCERT HALL



SCALE 1:200
LIVYA E P | 230101601016 | B.ARCH III YR