

[RIVER ISLAND ECOLOGIES]

Wetlands, fishing, seasonal flooding, island ecology, livelihoods, cultural landscapes, riverine communities.

MArch Thesis

Pernel Nsanga Kivouila

Manifesto

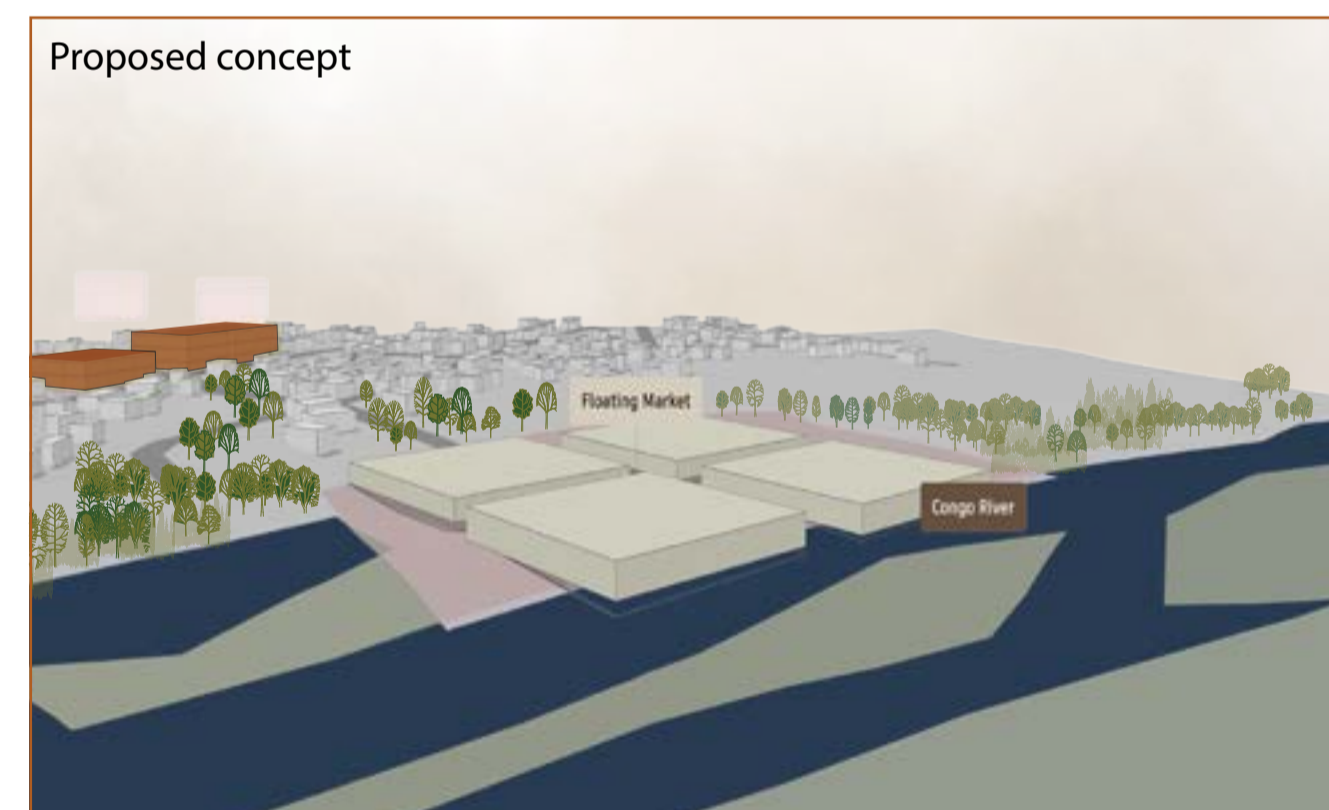
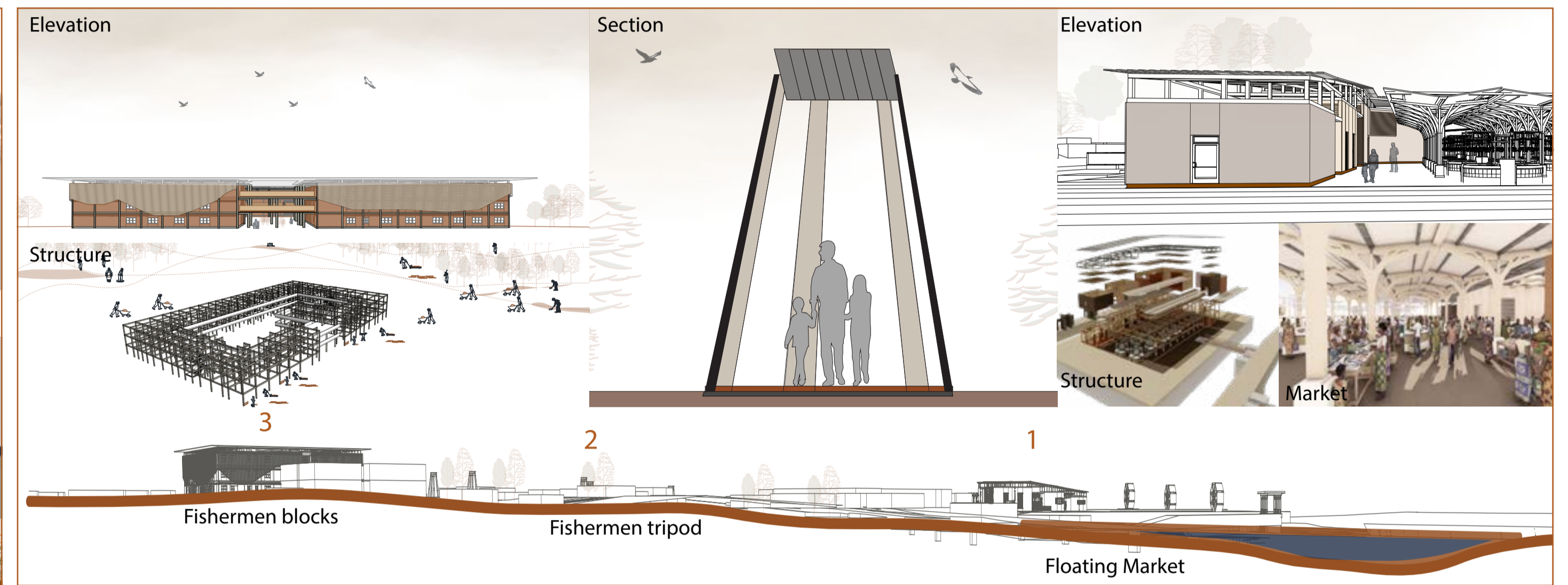
Growing up beside the Congo River in Brazzaville shaped my understanding of movement, community, and place. Inspired by journeys between Brazzaville, Kinshasa, and Mbamu Island, this project explores architecture rooted in the river life. Climate, and collective living.

Designed for the fishing communities of Mbamu Island, it creates spaces for gathering, work, and culture that respond to the changing rhythms of the river.

Project Aim

A dual project for Mbamu community: a flood-adaptive floating fishermen's market with mixed-used spaces for trade and daily life, paired with a residential block on higher ground to avoid flooding.

Built using local materials, the project aims to strengthen livelihoods and enhance community resilience along the Congo River.



Site 1: 776m2 Site 2: 786m2 Site 3: 13,22m2

