

TRAUMA HEALING & LEARNING CENTER FOR CHILDREN



PROJET TYPE: COMMUNITY-BASED EDUCATIONAL & THERAPY CENTER
DATE: APRIL, 2026
DESIGNED BY: SALMA SHARIF

PROJECT OVERVIEW

Children growing up in conflict zones often experience fear, instability, loss and emotional trauma from an early age. In places like Afghanistan many children are affected not only by violence and displacement, but also by the lack of safe and supportive environments for the healing and development. While aid focuses on physical survival, their emotional needs are often overlooked. This project is based on the belief that true healing requires safe, supportive spaces where children can feel protected, valued and cared through architecture.

The center accommodates 60 children, including 30 girls and 30 boys between the ages of 7 to 15 years old, creating an environment where they can learn, recover and rebuild their confidence.



CONCEPT DEVELOPMENT

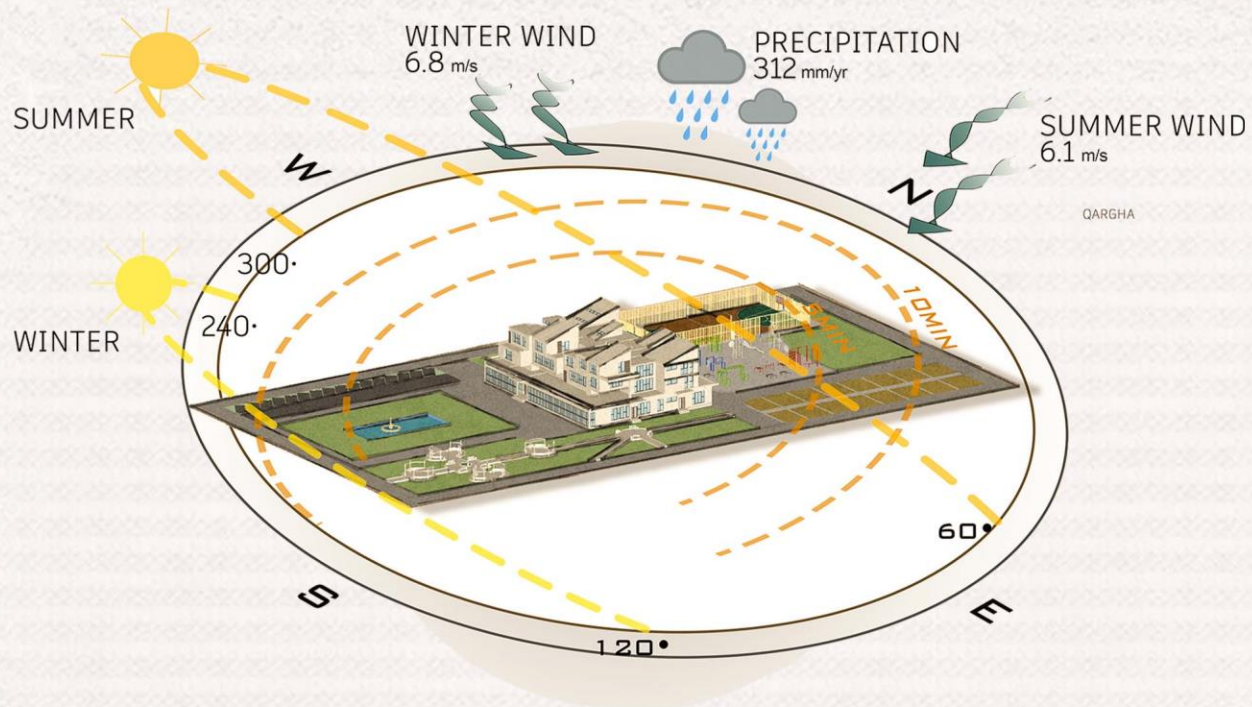
Architecture in this context, becomes an active tool for care: a physical environment that helps transform fear into stability and burden into support. The conceptual foundation of the project originates from the image of a child carrying a wooden board on his shoulders, loaded with small objects. This image represents a powerful reality: children carrying the weight of war on their bodies and minds. The board becomes a metaphor for burden—simple, heavy, and unavoidable. In this project, that burden is re-interpreted architecturally and transformed into a supporting platform. What the child once carried becomes something that carries the child. This idea directly shapes the architectural form.



TRAUMA CENTER FOR CHILDREN

SITE ANALYSIS & LOCATION

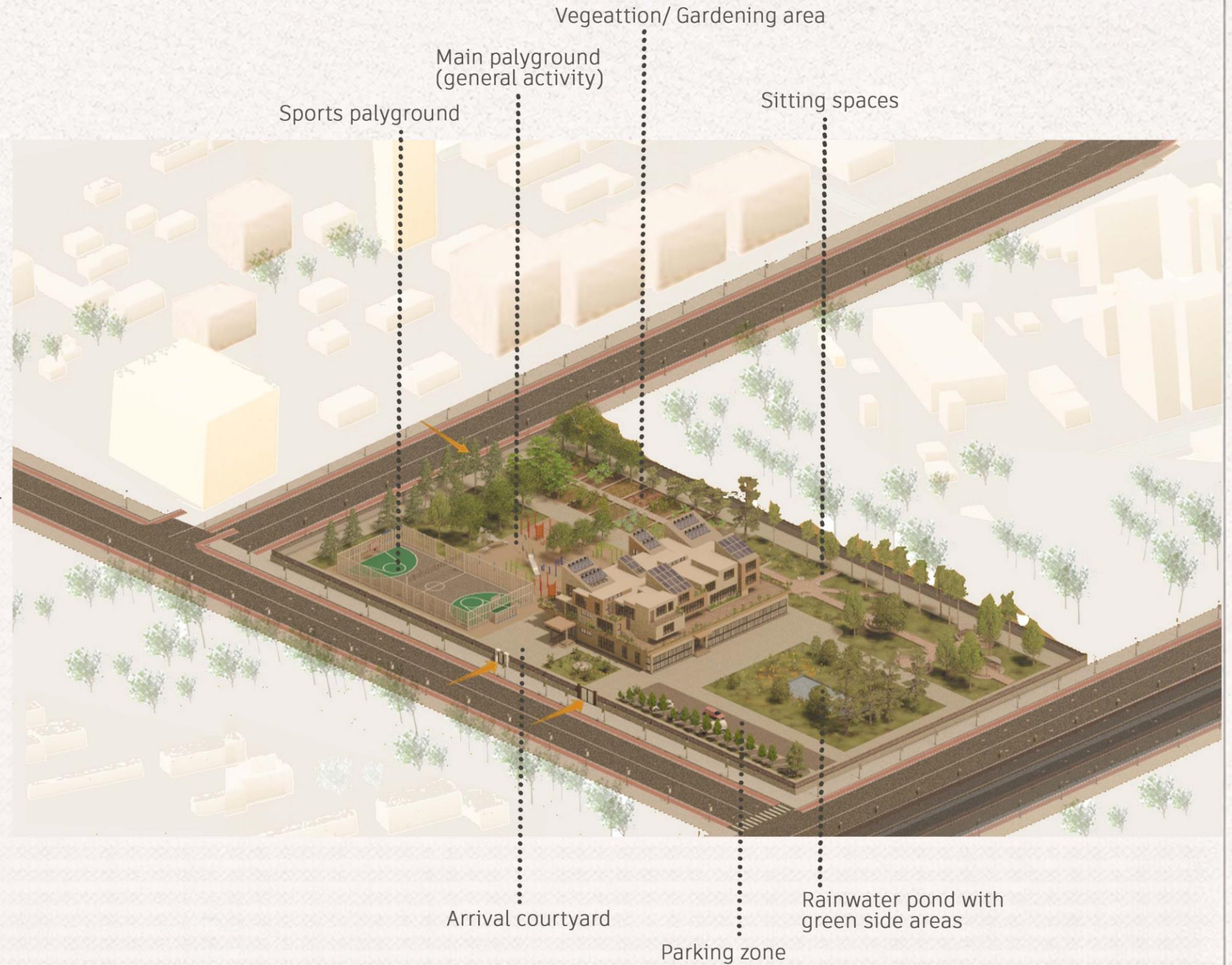
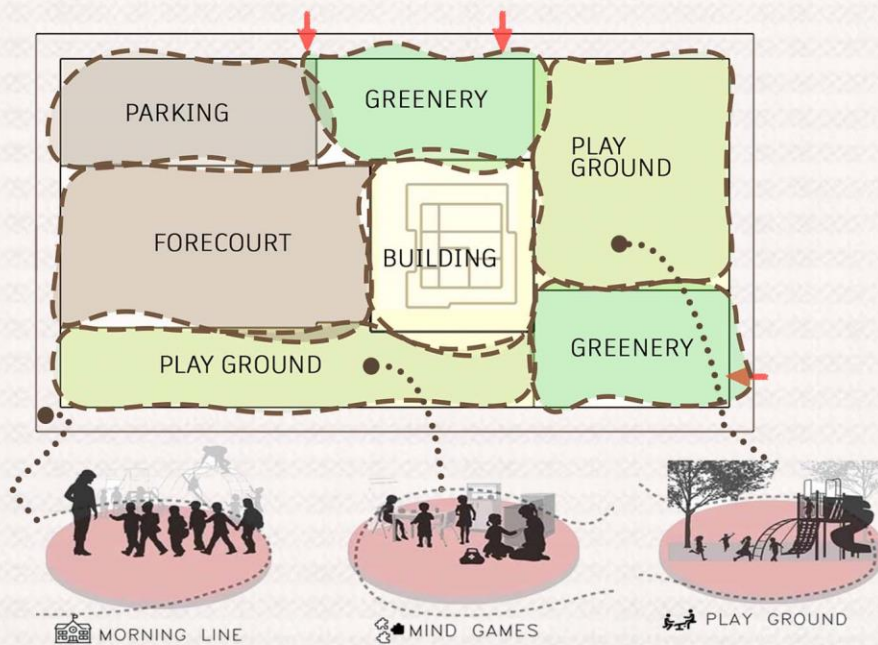
The project is located in Kabul, Afghanistan, between Kart-e-chahr and Kart-e-sakhi. Kabul has a continental climate, with hot dry summers and cold winters.



TRAUMA CENTER FOR CHILDREN

SITE PLAN

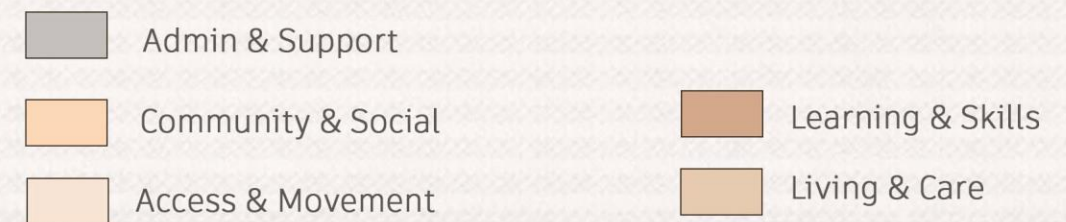
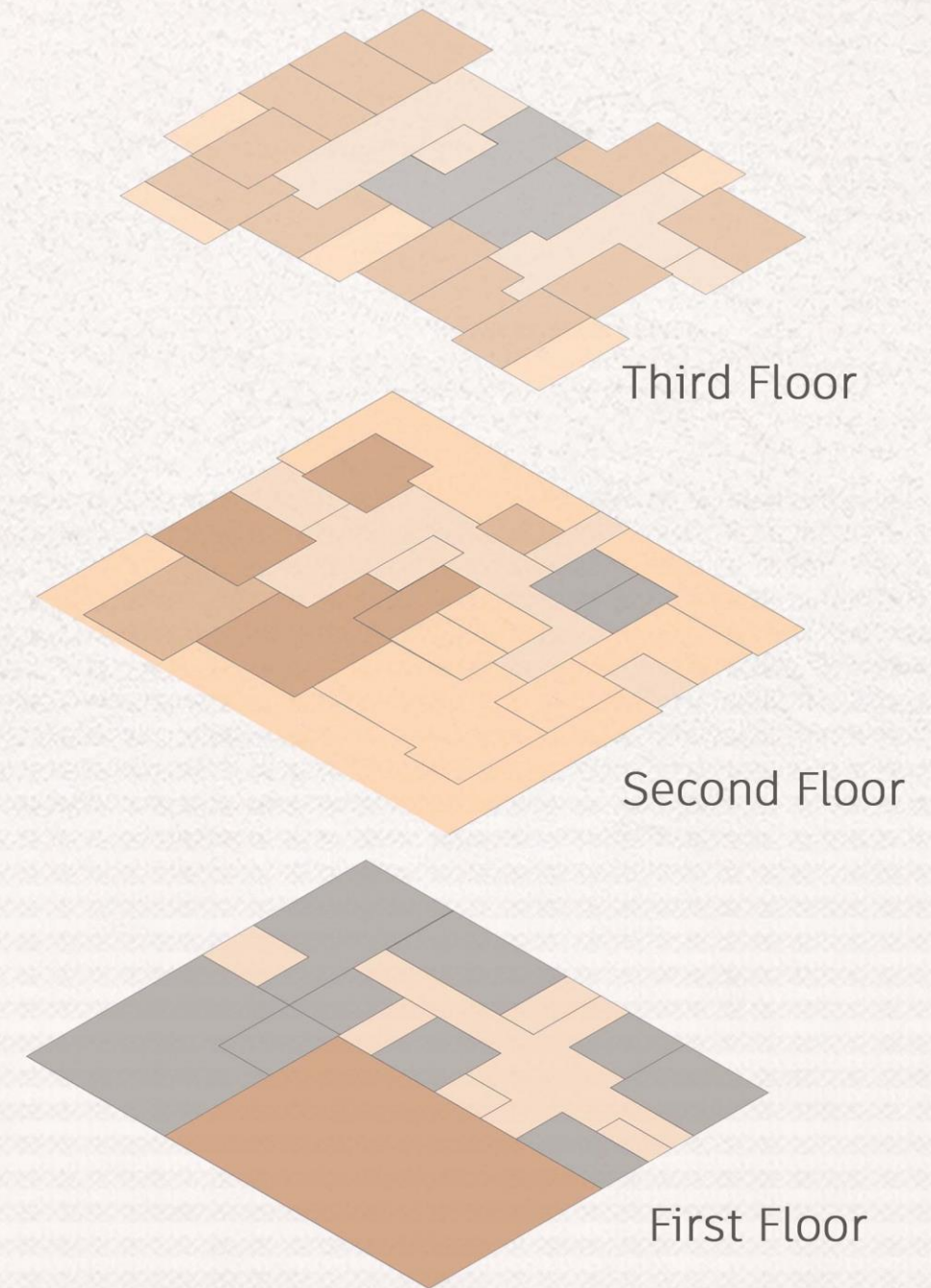
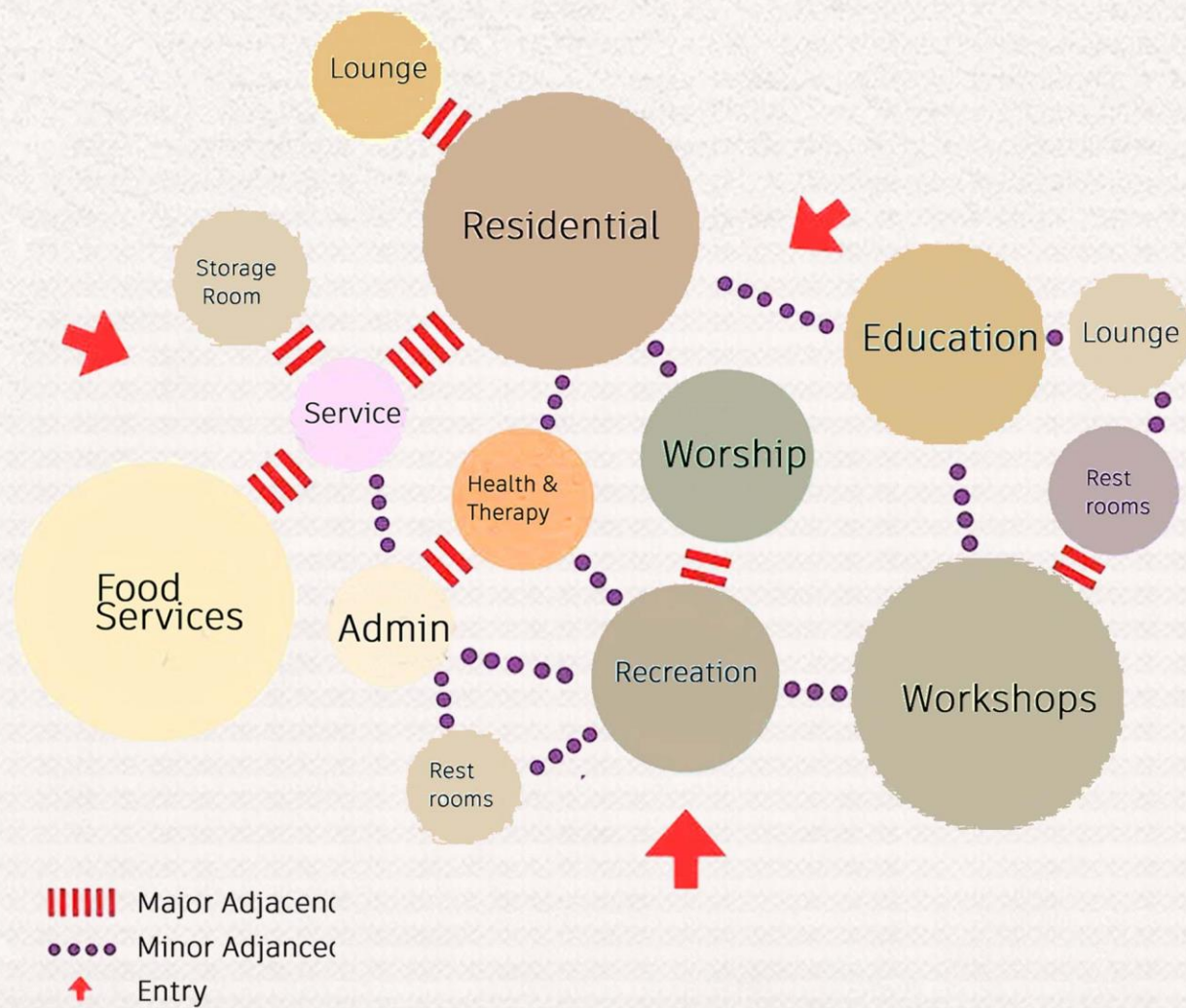
The design includes a playground, a multi-use sports area and community garden for growing vegetables. A walking path surrounds the site. Greenery is placed along the edges to reduce noise and wind in winter. Open and covered seating areas provide spaces for rest and social interaction. Site has three entrances: main, vehicular and services entrances. A shallow retention pond collects rainwater and snowmelt for safe drainage.



TRAUMA CENTER FOR CHILDREN

ZONING & FORM DEVELOPMENT

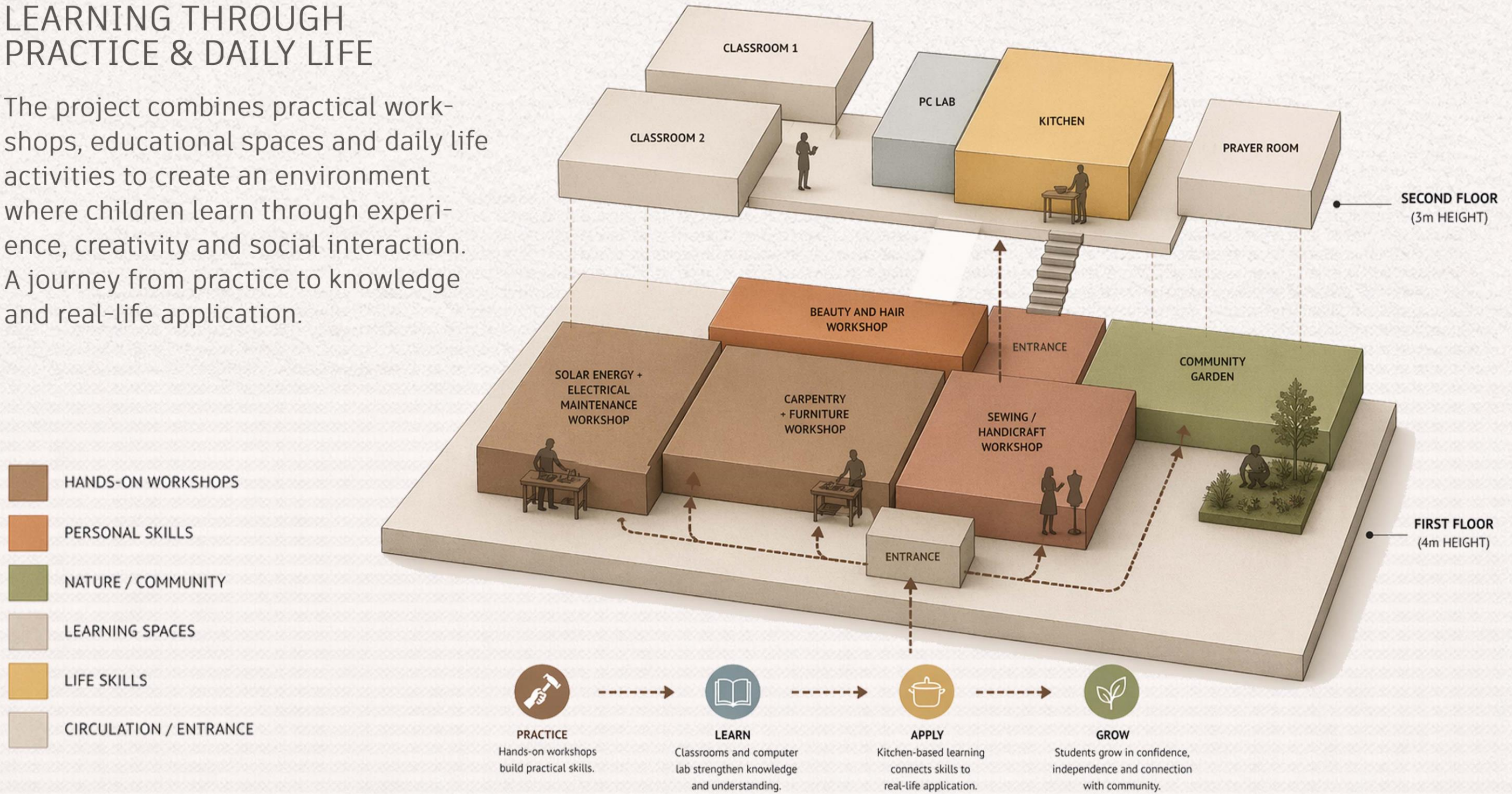
The zoning and the form development process transforms the program into interconnected educational residential and community spaces across three levels. The building form responds to functional relationships, circulation and environmental considerations through a human-centered design approach.



TRAUMA CENTER FOR CHILDREN

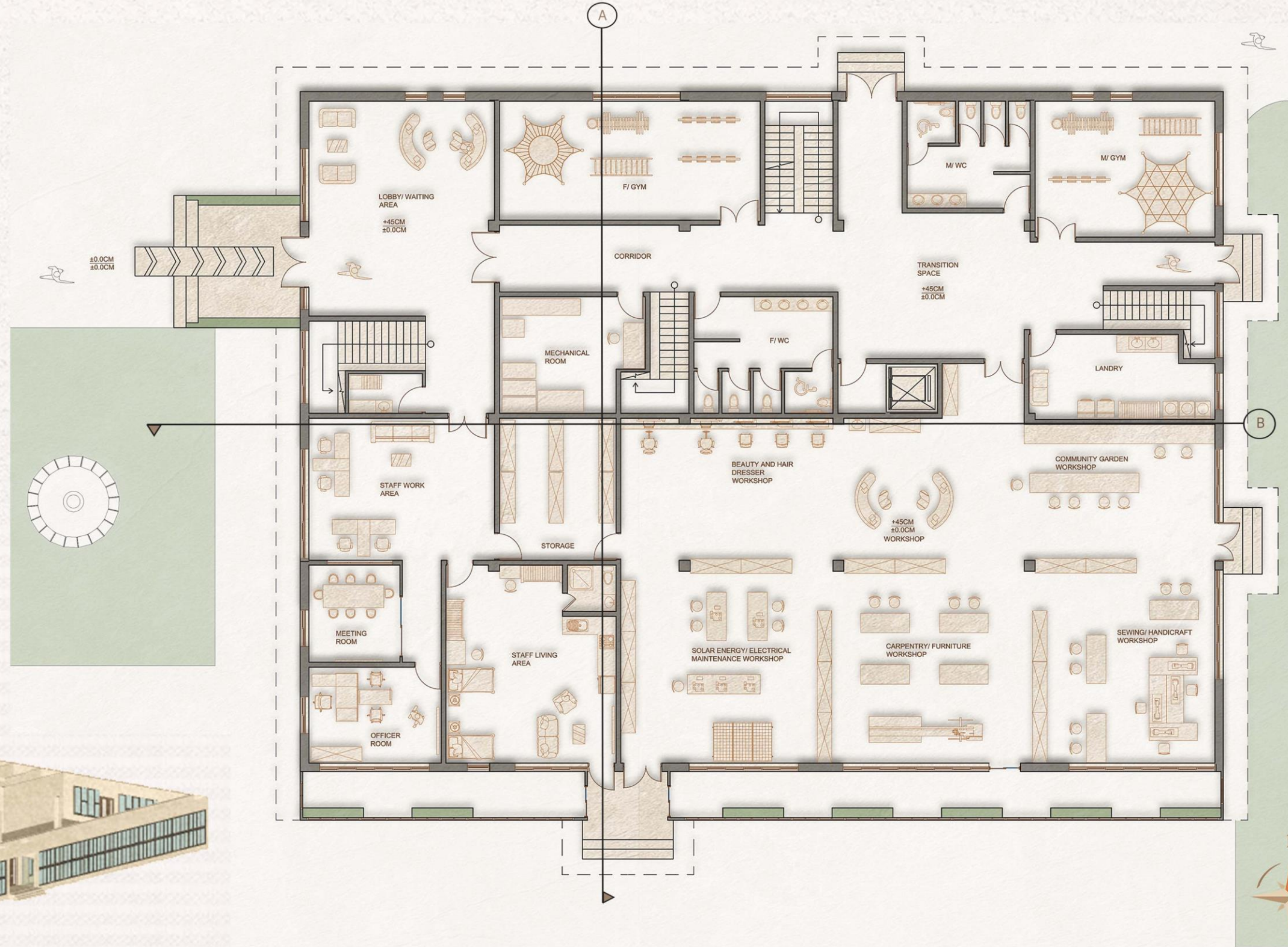
LEARNING THROUGH PRACTICE & DAILY LIFE

The project combines practical workshops, educational spaces and daily life activities to create an environment where children learn through experience, creativity and social interaction. A journey from practice to knowledge and real-life application.



TRAUMA CENTER FOR CHILDREN

FIRST FLOOR PLAN



ISOMETRIC VIEW

SCALE: 1:200

TRAUMA CENTER FOR CHILDREN

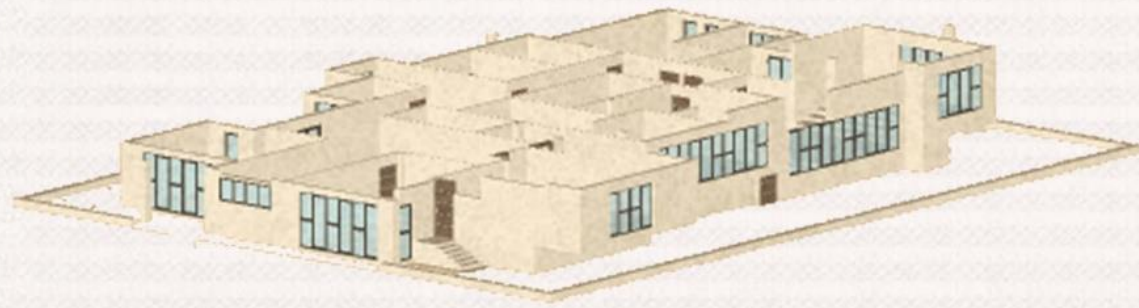
LOBBY PERSPECTIVE VIEW

The lobby creates a welcoming and calming first impression through natural light, warm materials, greenery and simple functional furniture. As the main transition space, it provides clear orientation and connects visitors with the administration and public areas, while secondary controlled entrance creates a gradual zones of the center, supporting safety, privacy and a sense of comfort for children and staff.

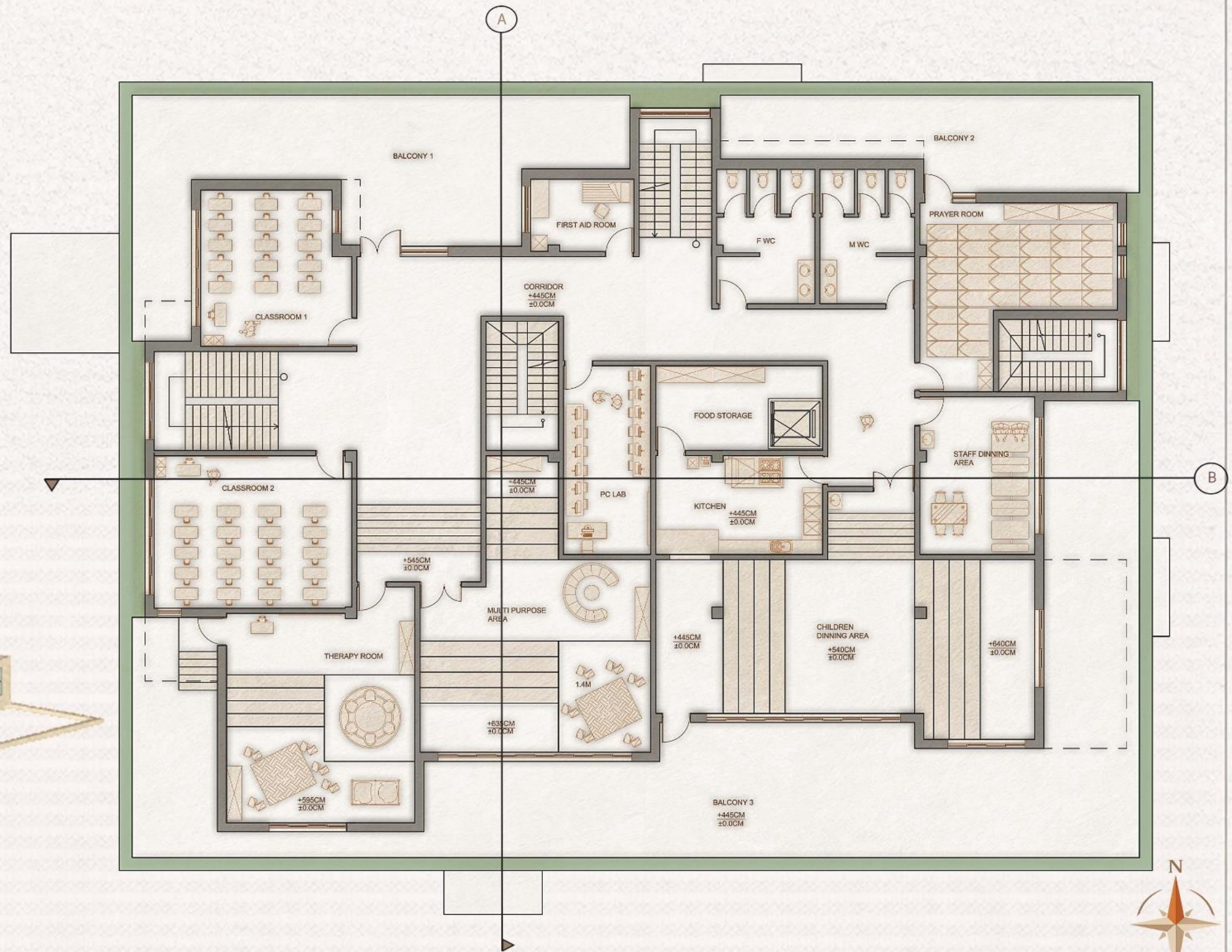


TRAUMA CENTER FOR CHILDREN

SECOND FLOOR PLAN



ISOMETRIC VIEW



SCALE: 1:200

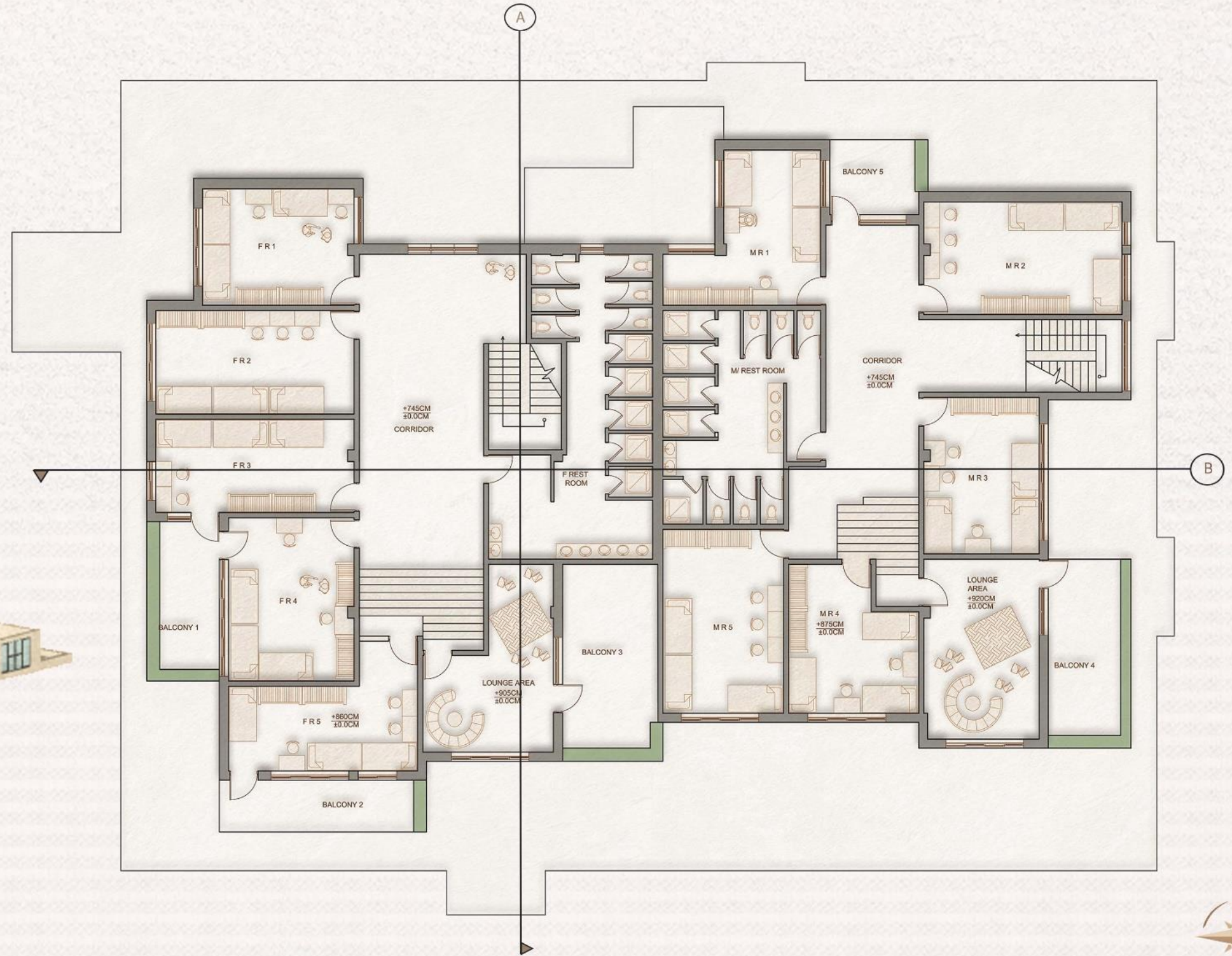
MULTIPURPOSE AREA

The multipurpose area provides a flexible and welcoming environment for children's social interaction, learning and daily activities through natural light, warm.



TRAUMA CENTER FOR CHILDREN

THIRD FLOOR PLAN



ISOMETRIC VIEW



SCALE: 1:200

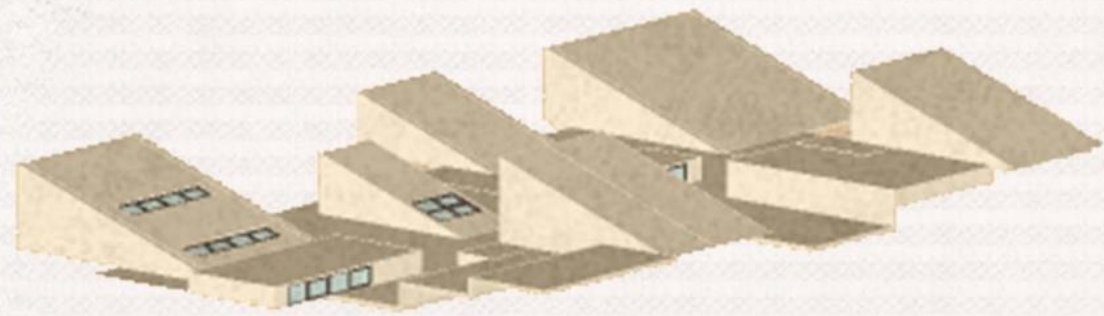
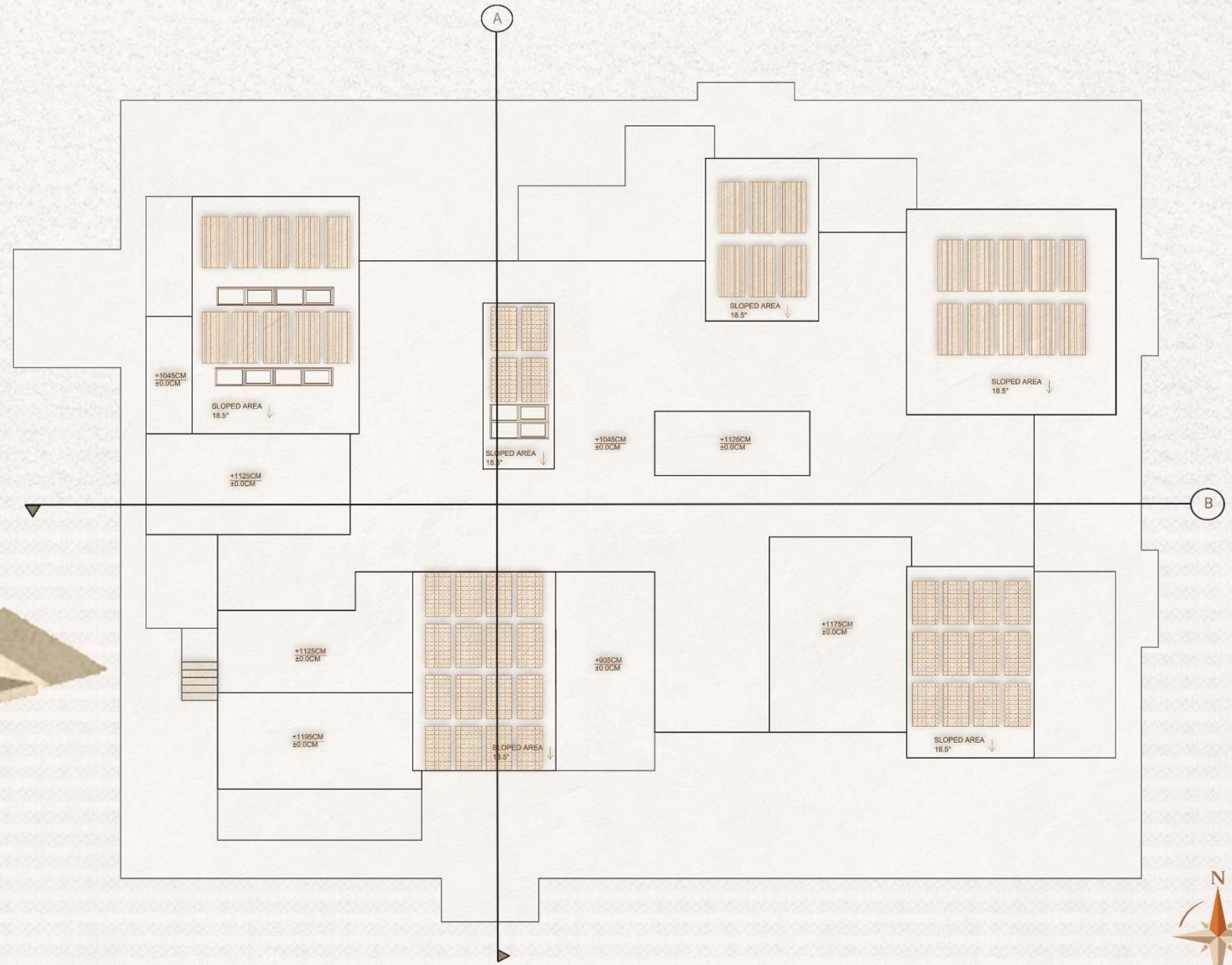
GIRLS LOUNGE AREA/ BOYS BEDROOM

The residential spaces on the third floor provide comfortable living areas for boys and girls with separate lounges, bedrooms and bathrooms. Afghan local materials and simple affordable furniture create familiar atmosphere.



TRAUMA CENTER FOR CHILDREN

ROOF PLAN



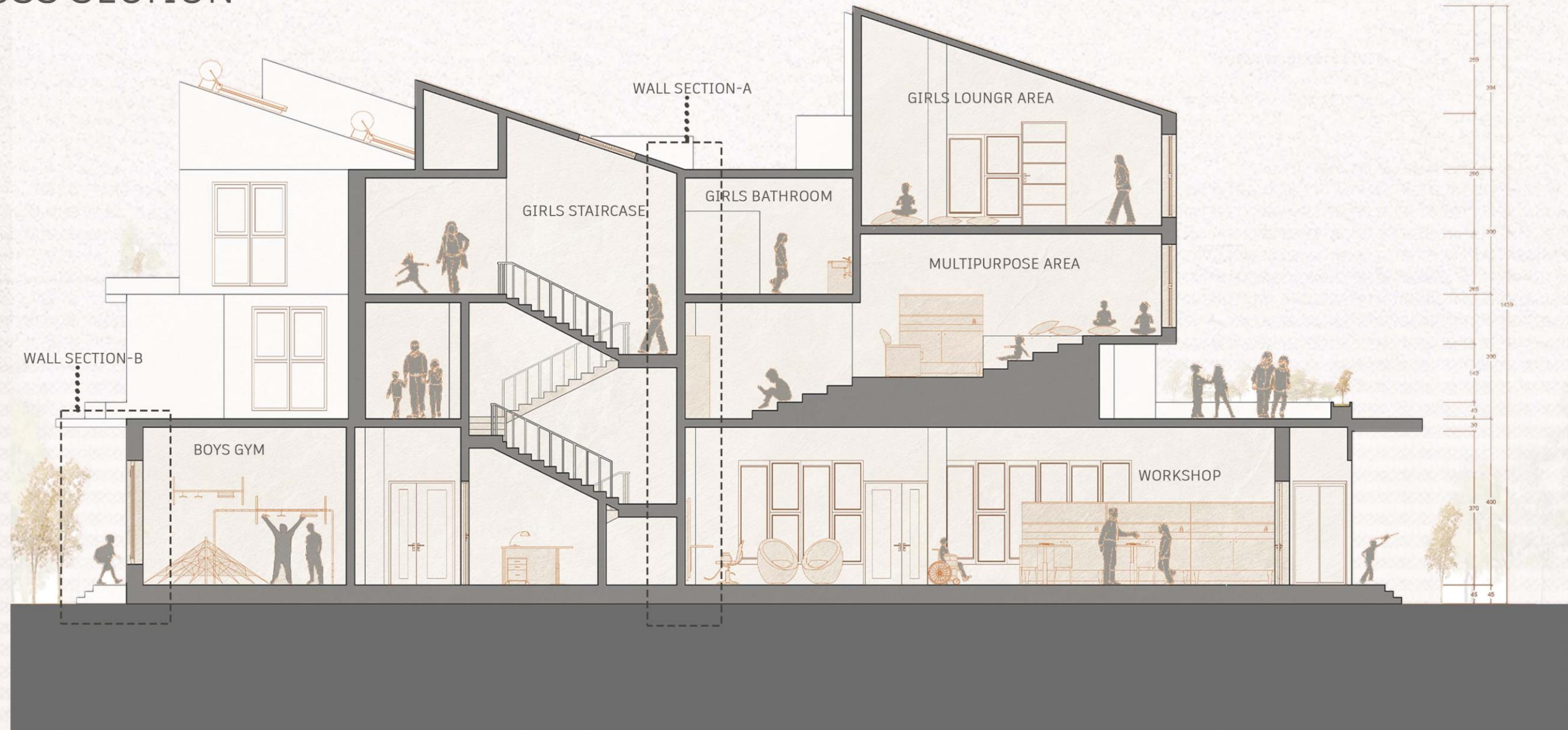
ISOMETRIC VIEW



SCALE: 1:200

TRAUMA CENTER FOR CHILDREN

A-CROSS SECTION

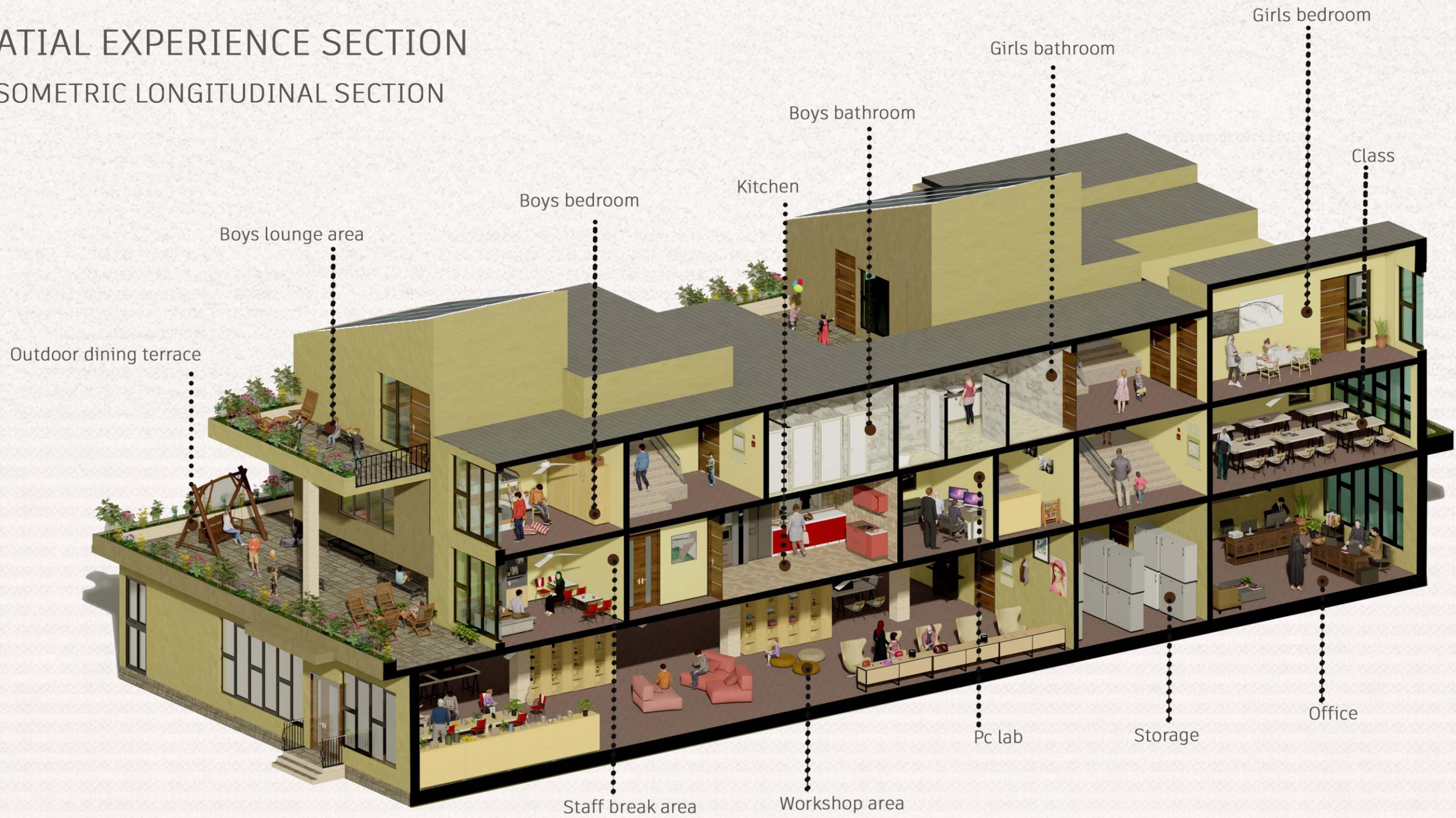


The cross section illustrates the spatial relationship between workshops, educational areas and residential spaces while emphasizing vertical circulation, natural light and human interaction within the building.

SCALE: 1:150

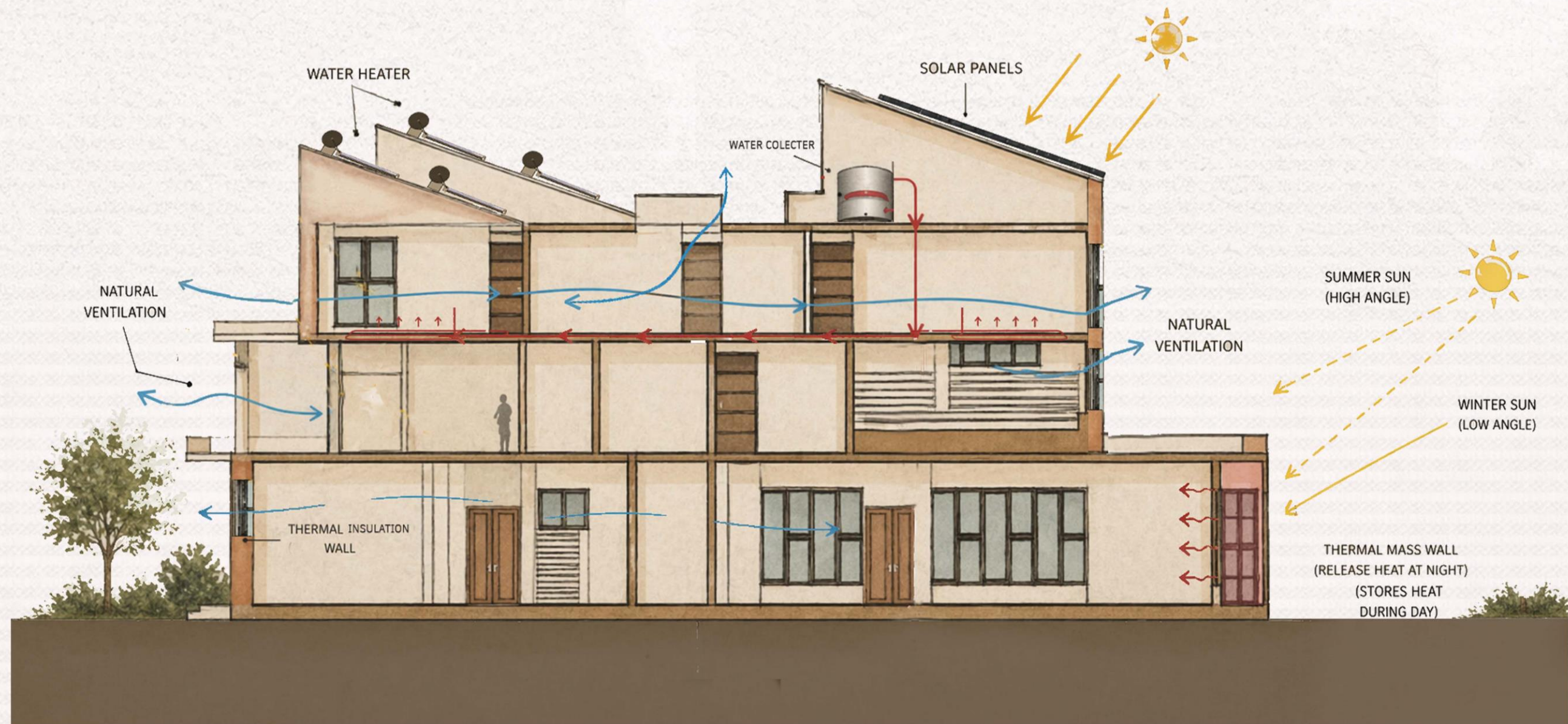
TRAUMA CENTER FOR CHILDREN

SPATIAL EXPERIENCE SECTION B-ISOMETRIC LONGITUDINAL SECTION



TRAUMA CENTER FOR CHILDREN

ENVIRONMENTAL STRATEGY SECTION



TRAUMA CENTER FOR CHILDREN

ELEVATIONS

The elevations express the relationship between the building form, local materials and surrounding outdoor spaces while emphasizing simplicity, human scale and environmental responsiveness.



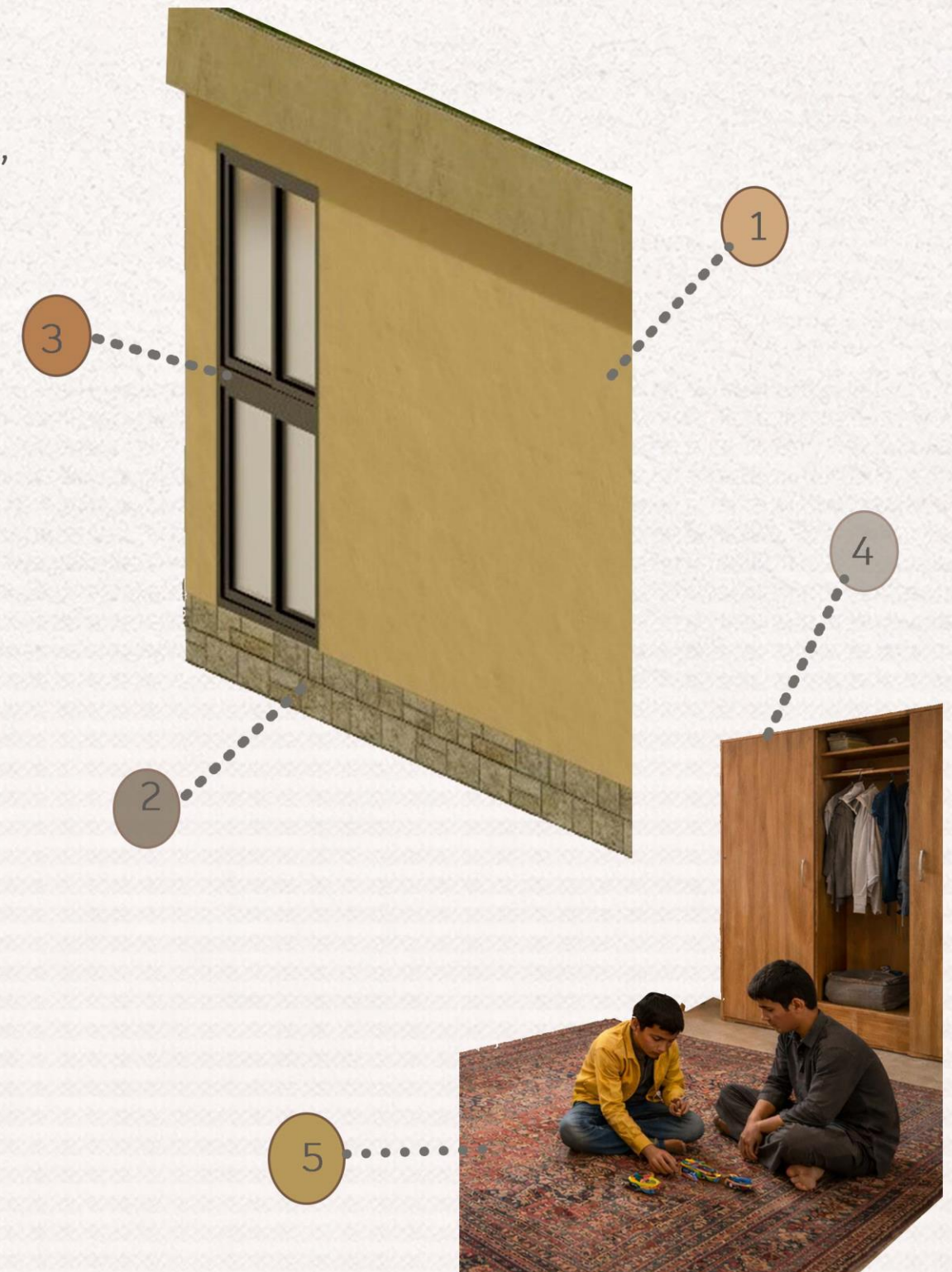
SOUTH ELEVATION



EAST ELEVATION WITH SITE CONTEXT

MATERIAL CONCEPT

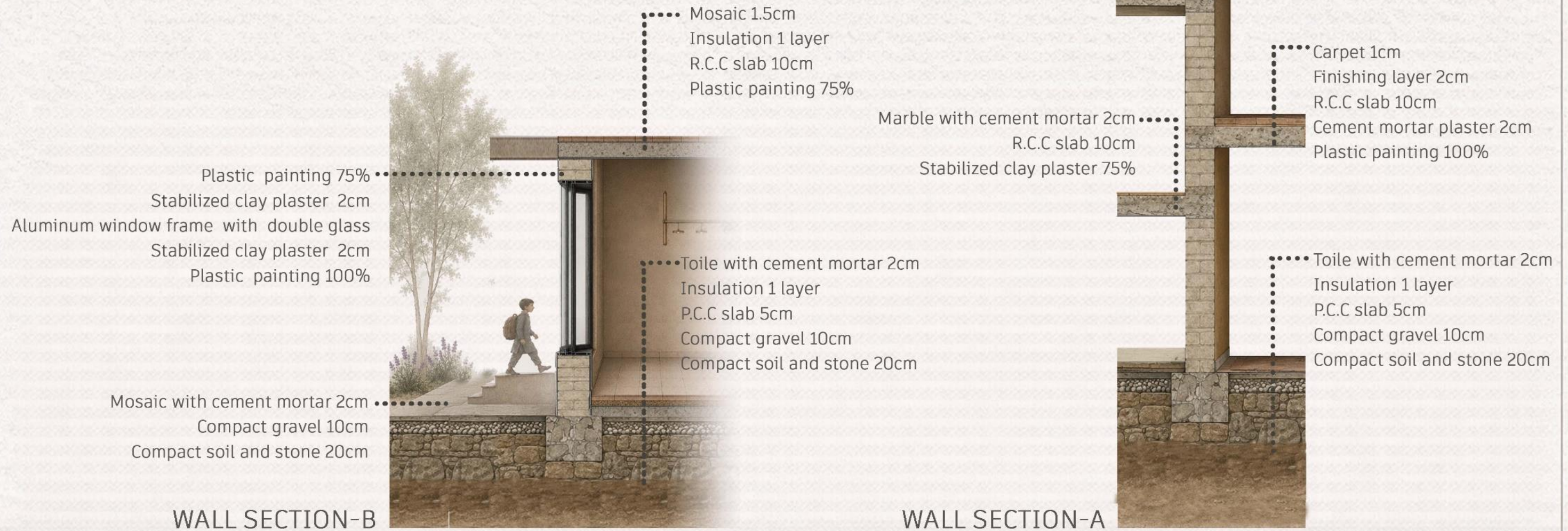
- 1- Clay plaster: Earthy plaster finish that is warm and textured. Durable, local and cost effective for the region.
- 2- Stone: used in interior and exterior stairs, lower part of the exterior wall for stability and regional context.
- 3- Dark metal : For window frames and minimal accents used.
- 4- Natural wood: have warm brown accents for doors and interior furnitur.
- 5- Afghan carpets: for comfort and cultural identity in interior spaces.



COLOR PALETTE

WALL SECTION & MATERIAL ASSEMBLY

This wall section illustrates the use of locally sourced materials, layered structural systems and thermal construction strategies developed to respond to the regional climate and long-term durability requirements. The detail emphasizes sustainable construction methods, material thickness and the integration of practical and cost-effective building solutions.



TRAUMA CENTER FOR CHILDREN

CONCLUION

The Trauma Center for Children is designed as a safe, supportive, and community-centered enviroment for children affect-ed by trauma and social challenges in Afghanistan. The project combines healing, education, daily life, and social interac-tion through a human-centered architural approach.

Using local materials, natural light, and sustanibal design strategies, the project creates comfortabel and welcoming spaces that respond to the regional climate and cultural context.

The intergiction of therapy, leaning, resdintial, and community sapeces encourges recovery, independence, and positive social cnnnection within a warm and secure envoirement.

