

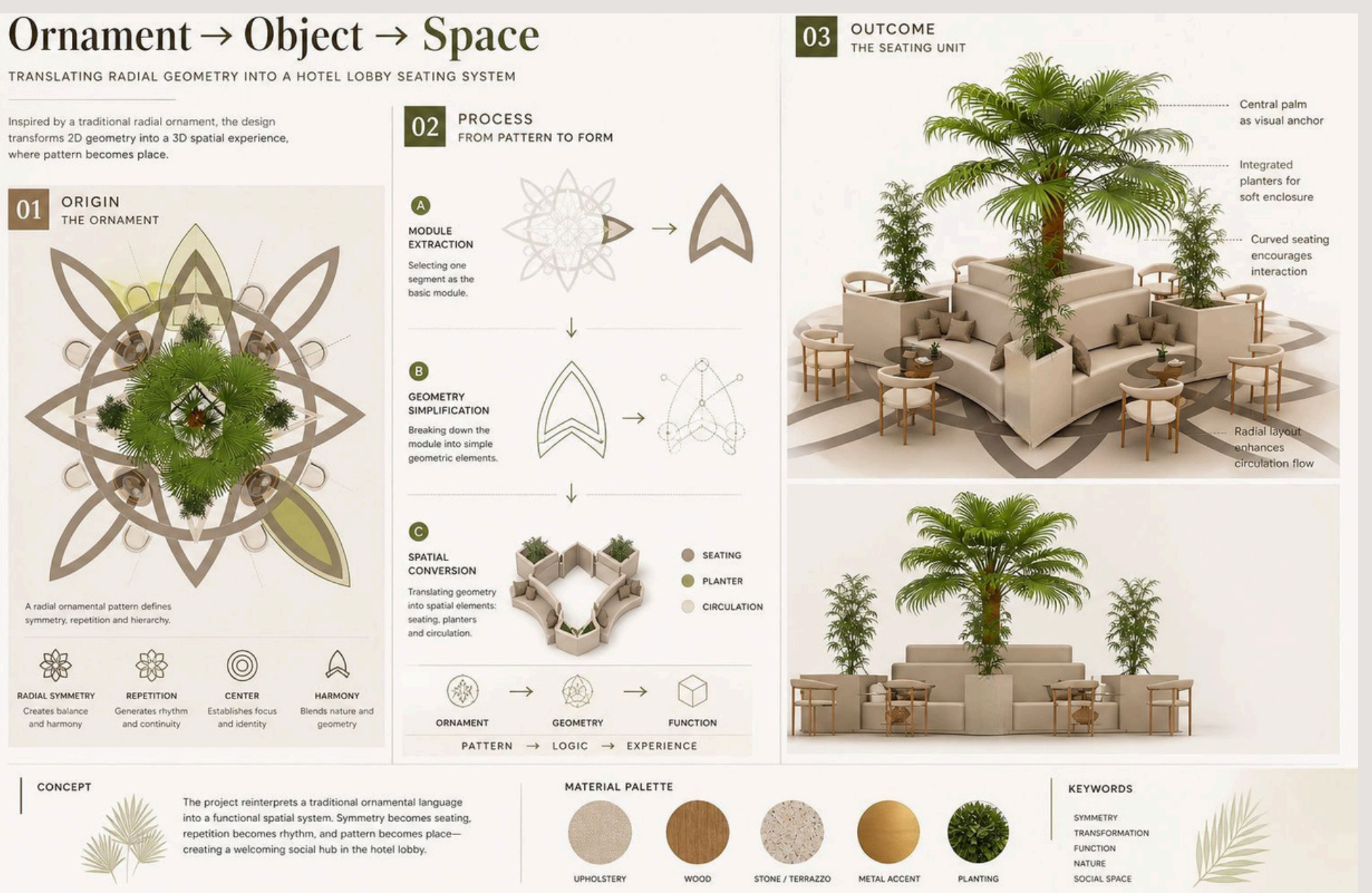
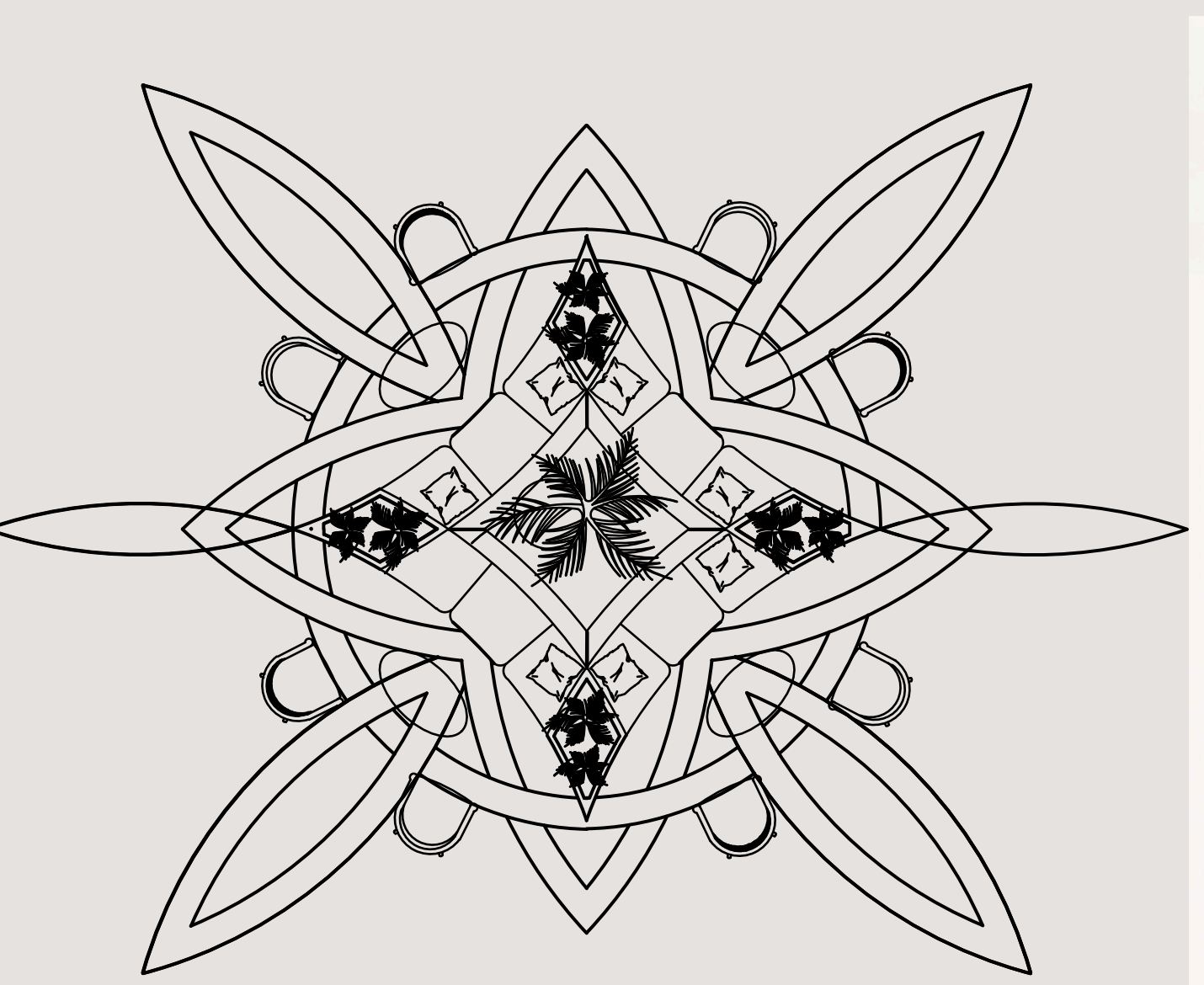
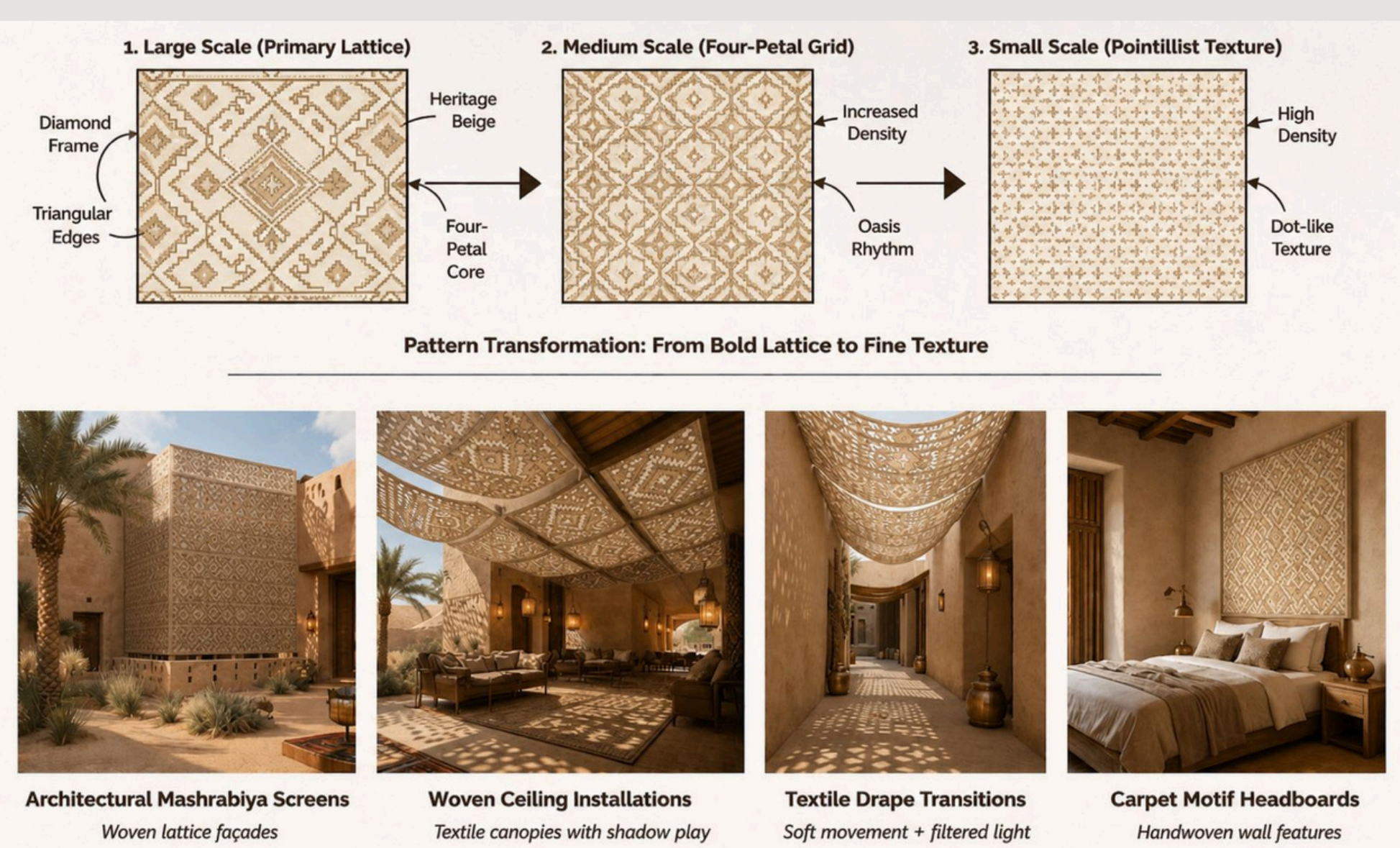
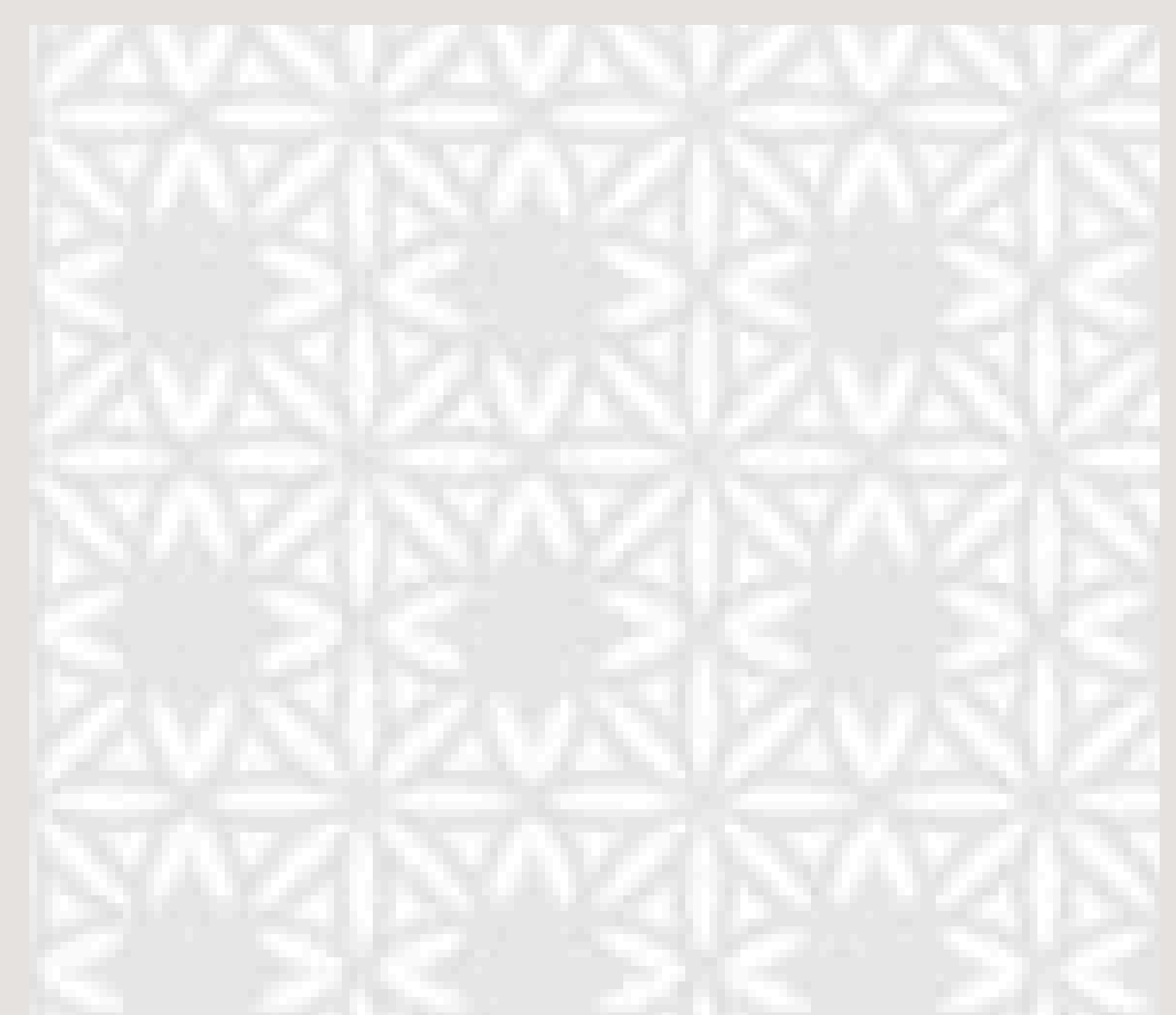
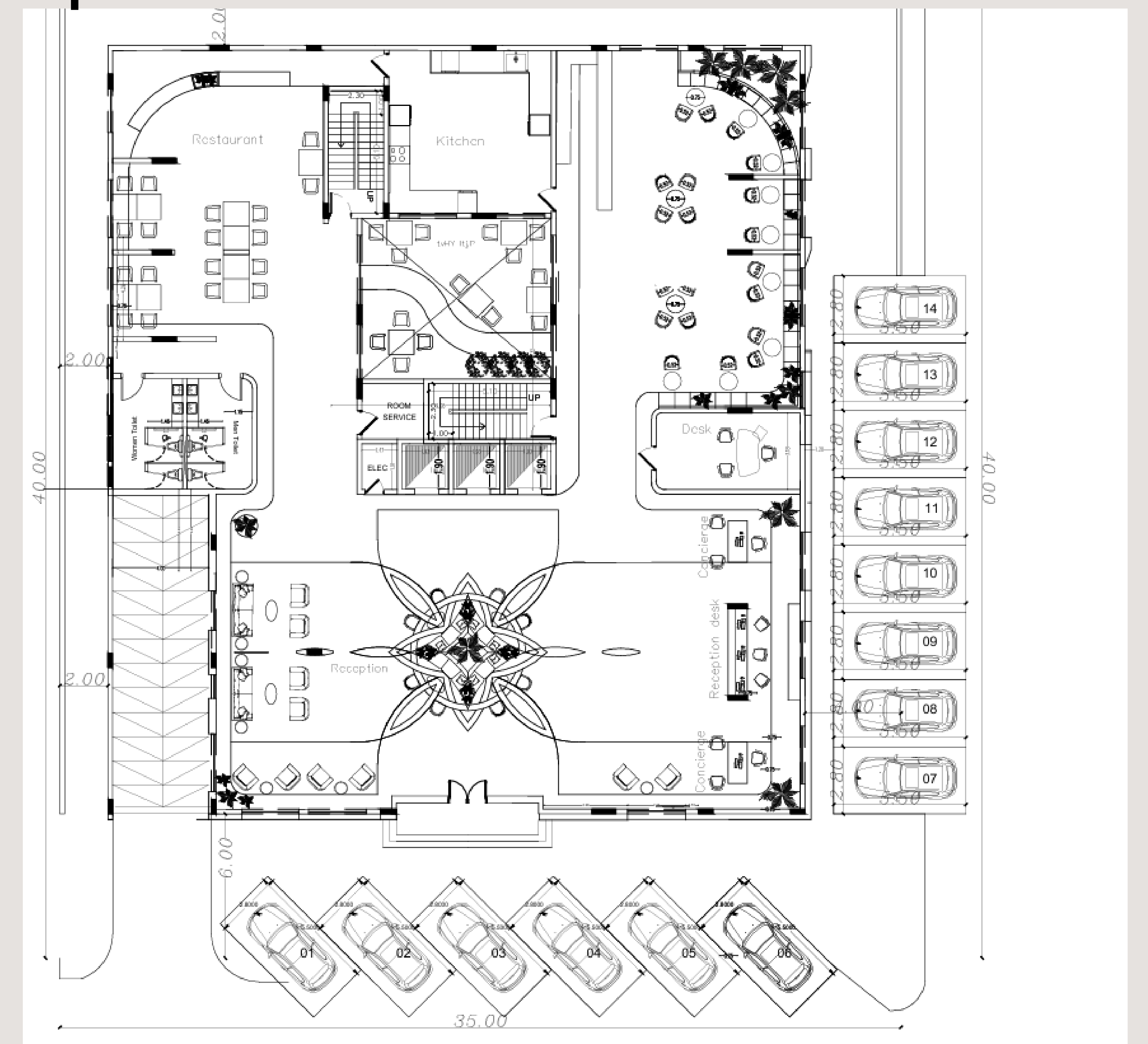
Concept

The boutique hotel is inspired by the cultural identity of Al Ahsa, where architecture and textiles intertwine to create a layered spatial experience. The concept draws from traditional Al Ahsa woven carpets and heritage textiles that were historically used in homes, tents, and gathering spaces. These textiles were not only decorative elements, but also structural and environmental solutions – providing shade, privacy, thermal comfort, and cultural expression. The project reinterprets this idea of “woven shelter” into a contemporary architectural language. Just as traditional carpets were carefully crafted thread by thread, the hotel is designed through layers of materials, patterns, light, and shadow.

Al Ahsa is one of the largest oases in the world, home to more than 2.5 million palm trees. This is not just a number – it reflects a deep history of connection between people and land. For the people of Al Ahsa, the palm tree was never just a tree; it was a source of life – providing food, shade, and supporting their daily economy. Philosophically, the palm tree represents continuous giving, patience, and deep roots. This idea inspired my project – to create an experience that is grounded in its identity, yet rich and evolving in its details. The presence of palm trees in Al Ahsa is not only a visual element, but a reflection of the spirit of the place and that is the spirit I aimed to capture in the hotel's design and identity.



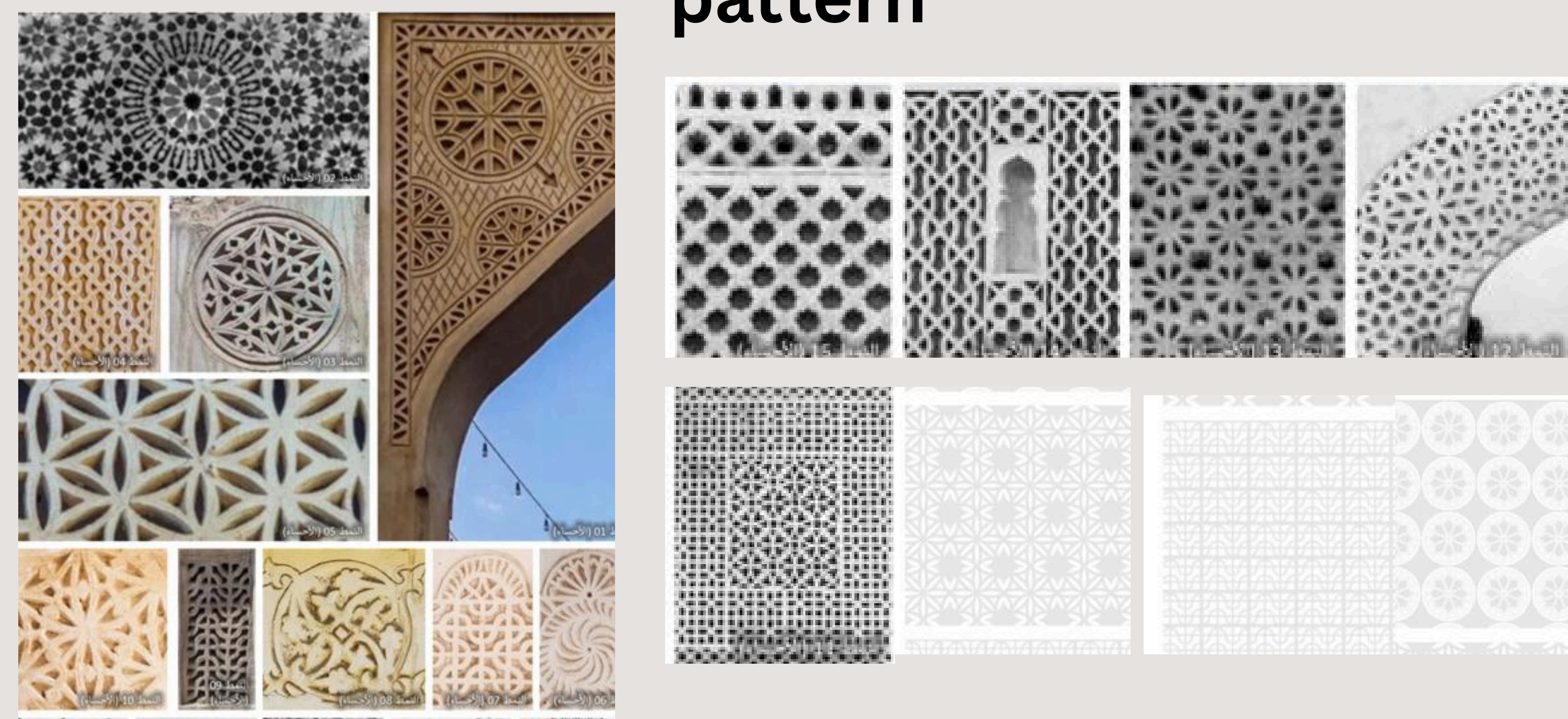
plan



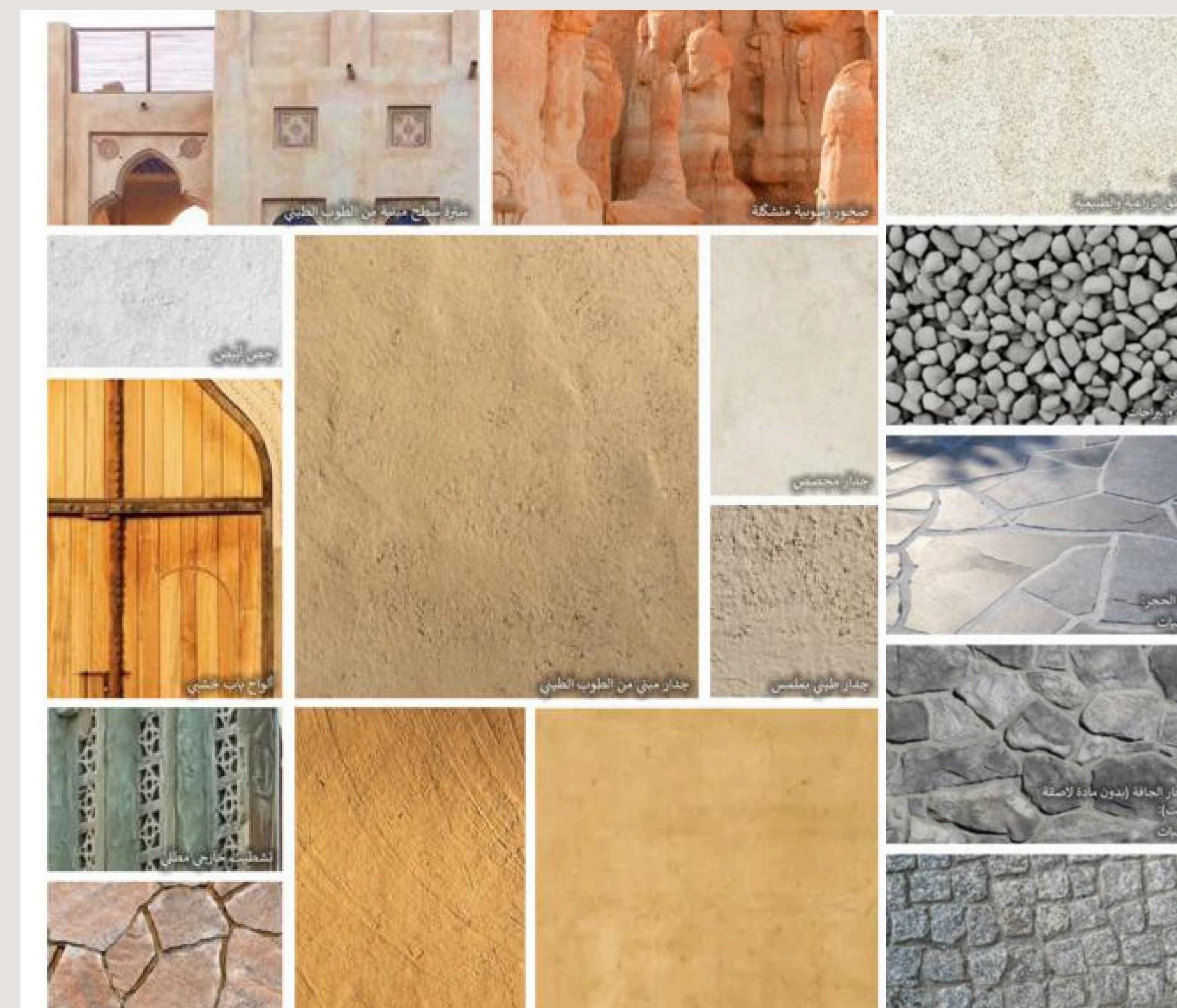
AI generations



pattern



materials



color

RAL 9010	RAL 9001
RAL 7034	RAL 1015
D2A747# RAL 1027	RAL 1011
CC9246# RAL 1027	D29386# RAL 1011
RAL 7034	RAL 1011
RAL 8023	A88257# RAL 1011
RAL 7033	
RAL 9005	