



P a v i l i o n

The pavilion is located in Girne (Kyrenia), Cyprus, beside the sea, and is inspired by the architectural language of Centre Pompidou-Metz by Shigeru Ban. Similar to the project's dialogue between curvilinear and rigid forms, the design explores fluid geometry as a way of creating shelter and spatial movement.

In this pavilion, the curvilinear form is used as a continuation of the sea, allowing the structure to flow naturally with the coastal landscape. The fluidity of the design represents the original attitude of the human body while moving through space, creating a dynamic relationship between architecture, movement, and environment. Through its woven timber structure and organic form, the pavilion becomes an exploration of motion, lightness, and contemporary architectural expression.

INFO

Location : North cyprus, Kyrenia

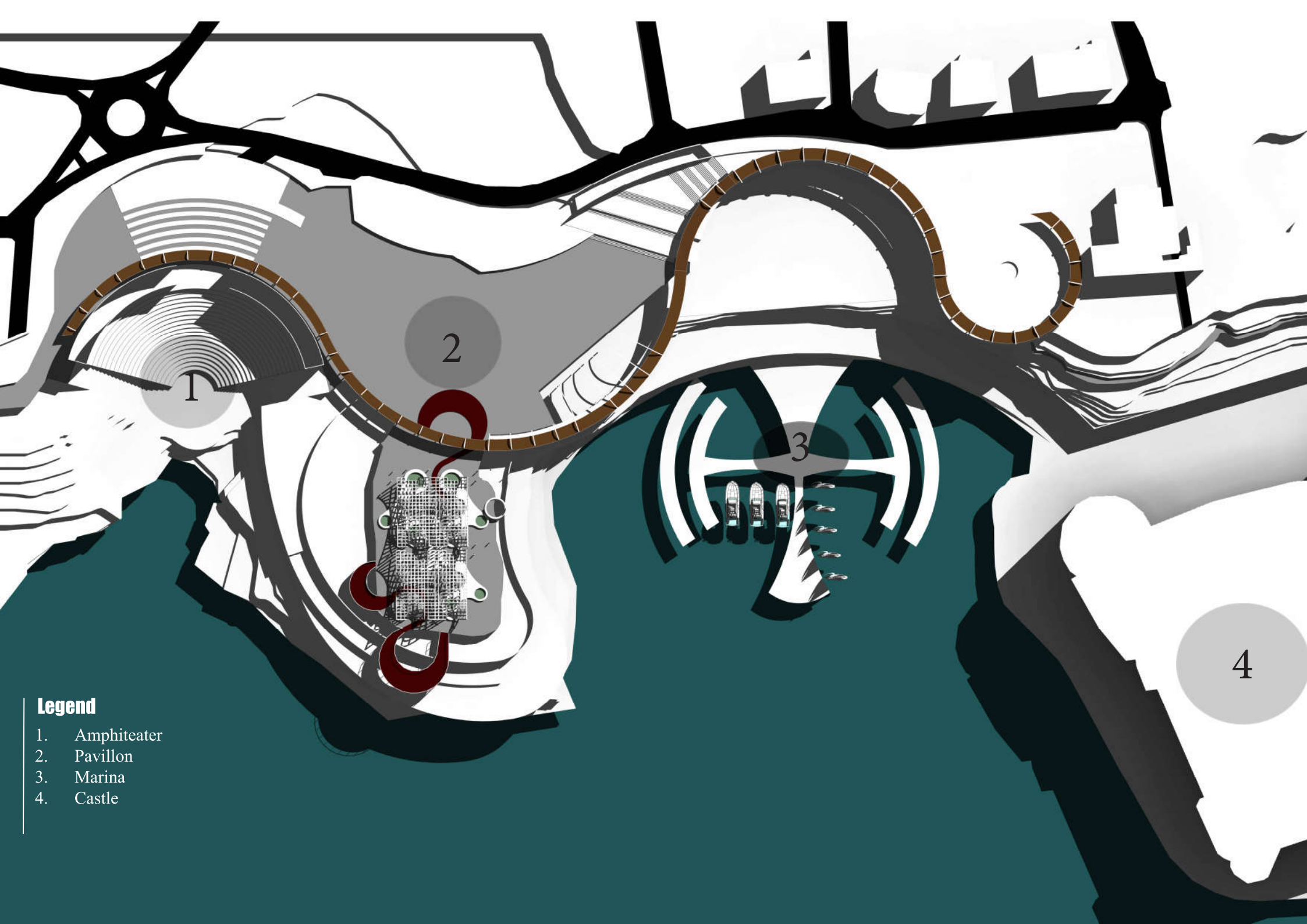
Year : 2022

Tyoe : Landscape

Area : -

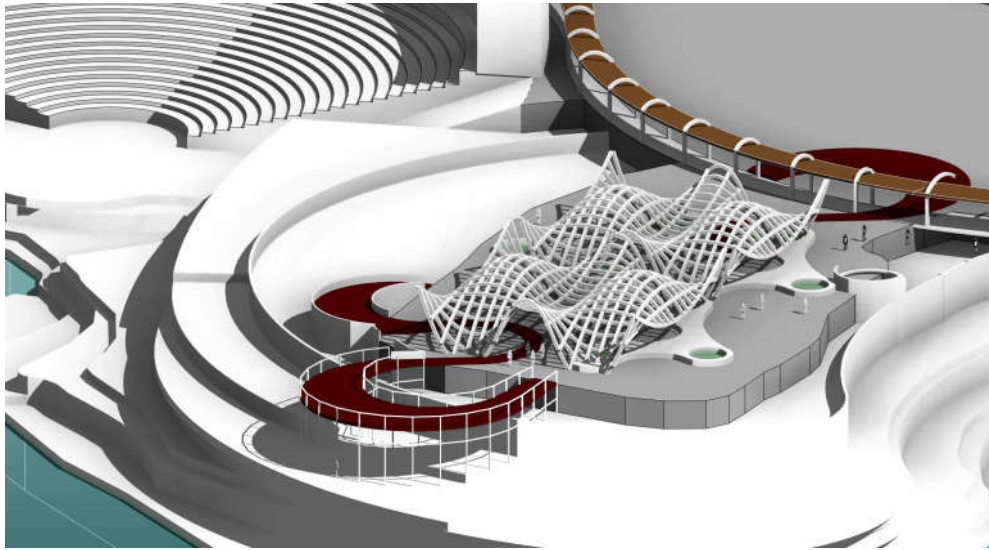
Client : -





Legend

- 1. Amphiteater
- 2. Pavillon
- 3. Marina
- 4. Castle



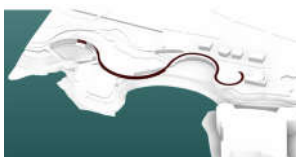
INSPIRATION

Pompidou center, Metz, Metz By Shigeru Ban

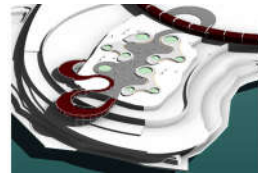
The final Design



Site



Consideration

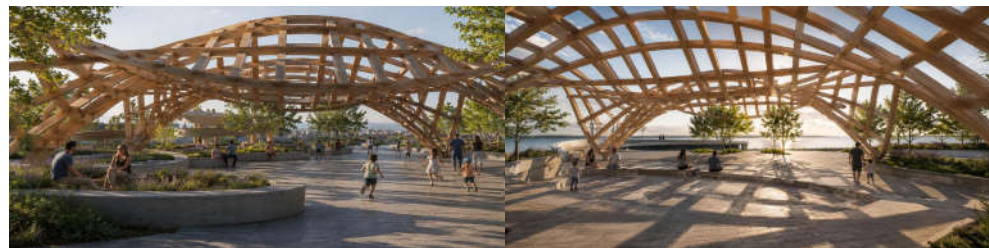
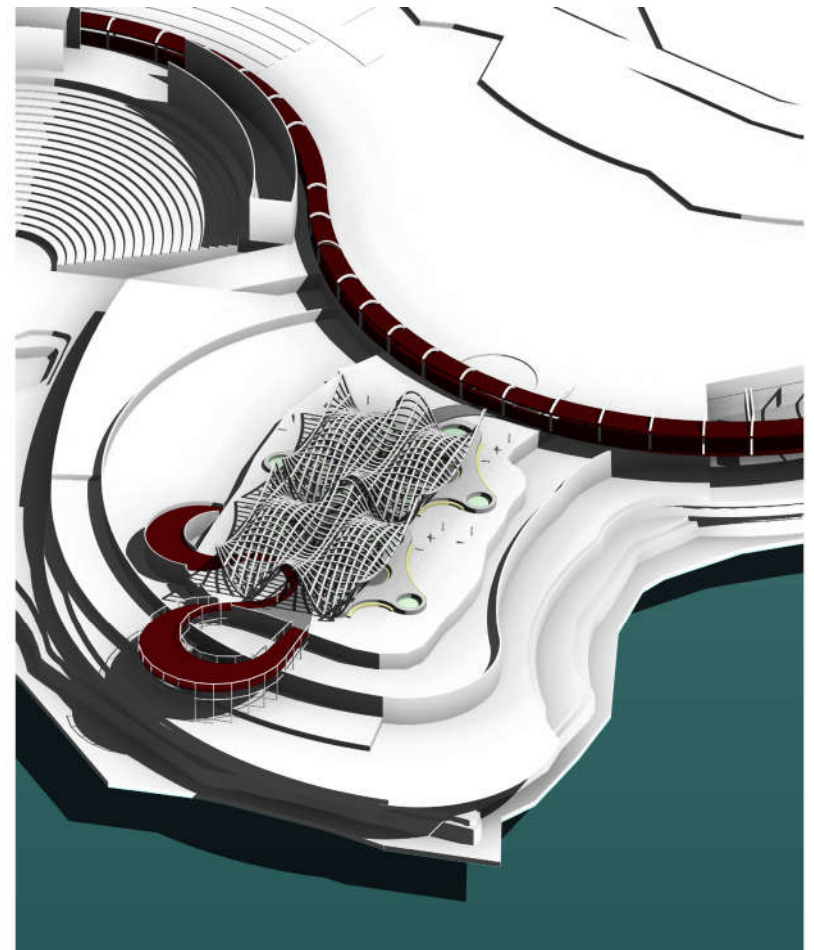
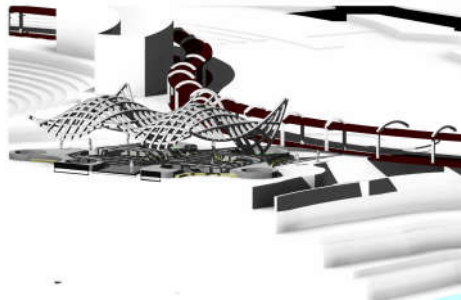
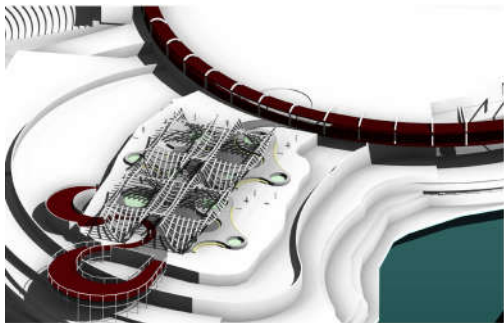


Concept

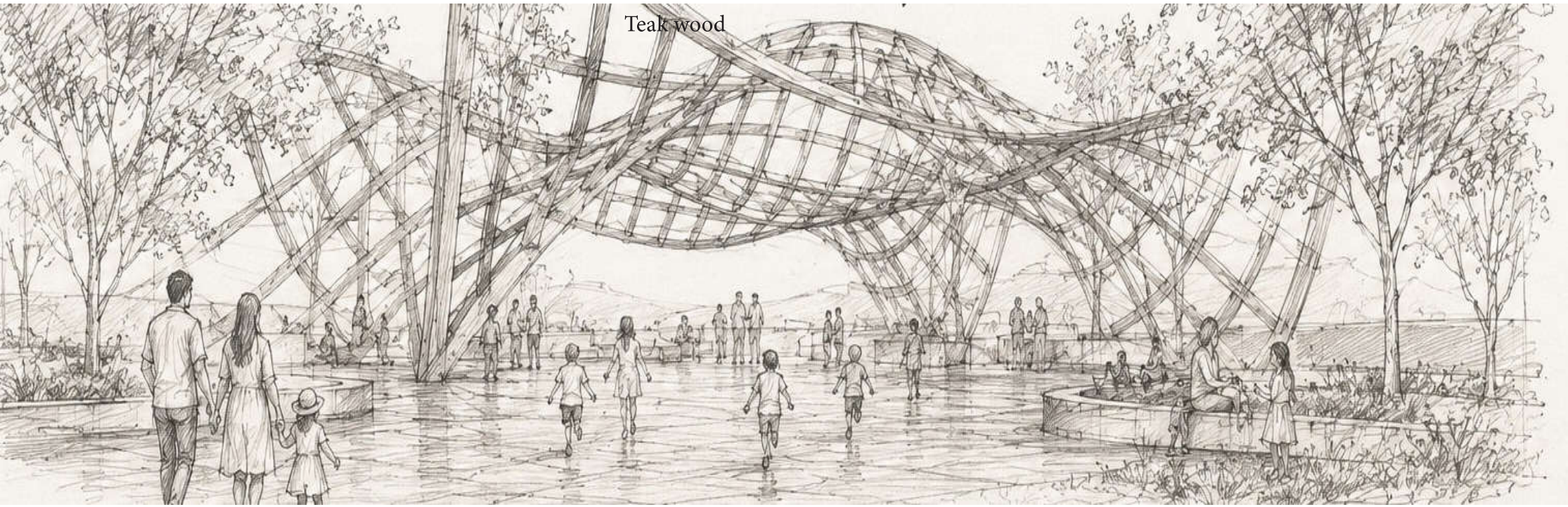
A lightweight pavilion connecting an open amphitheater, a castle and port.

A continuous curvilinear spine organizes the site, linking castle, Marina, amphitheater, and city into a unified sequence where movement becomes the primary generator of spatial and experiential continuity.

Inspired by the Centre Pompidou-Metz by Shigeru Ban, the concept is driven by the dialogue between fluidity and rigidity. Organic tree-flowing forms and a curvilinear open structure shape and cover the landscape, while human movement and circulation introduce structure, together creating a dynamic and immersive public realm.



Inspired by japanese architect



Teak wood