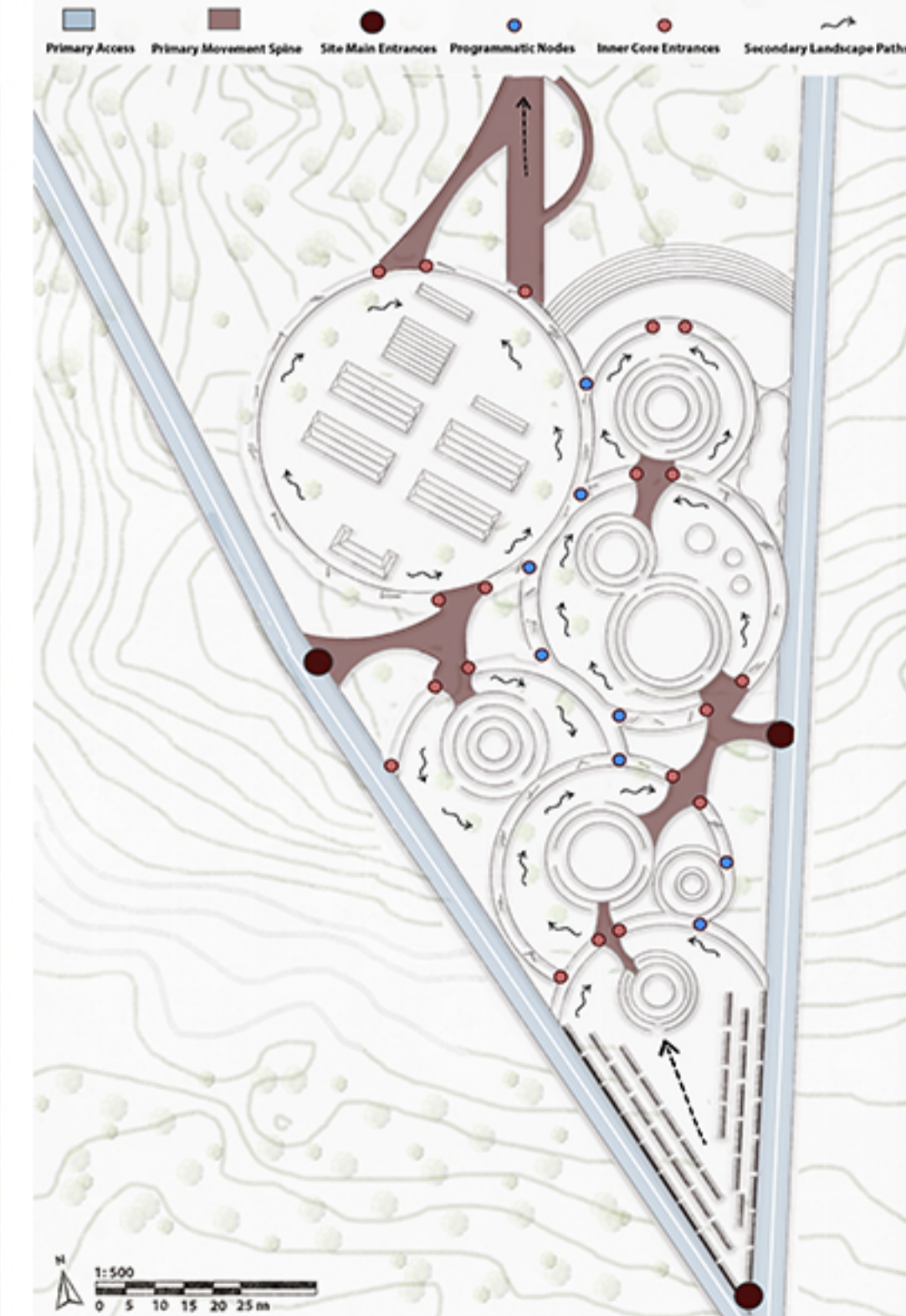
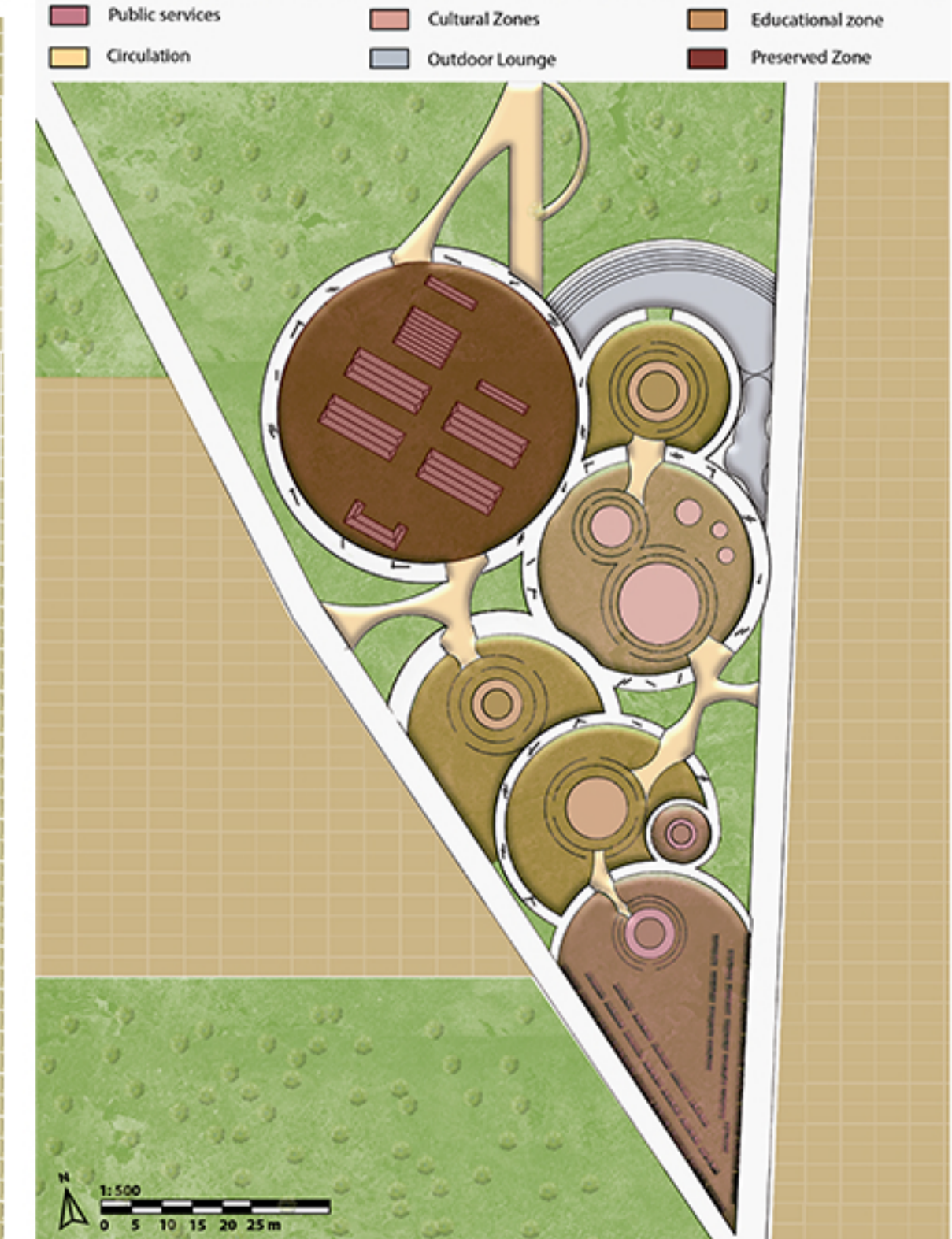
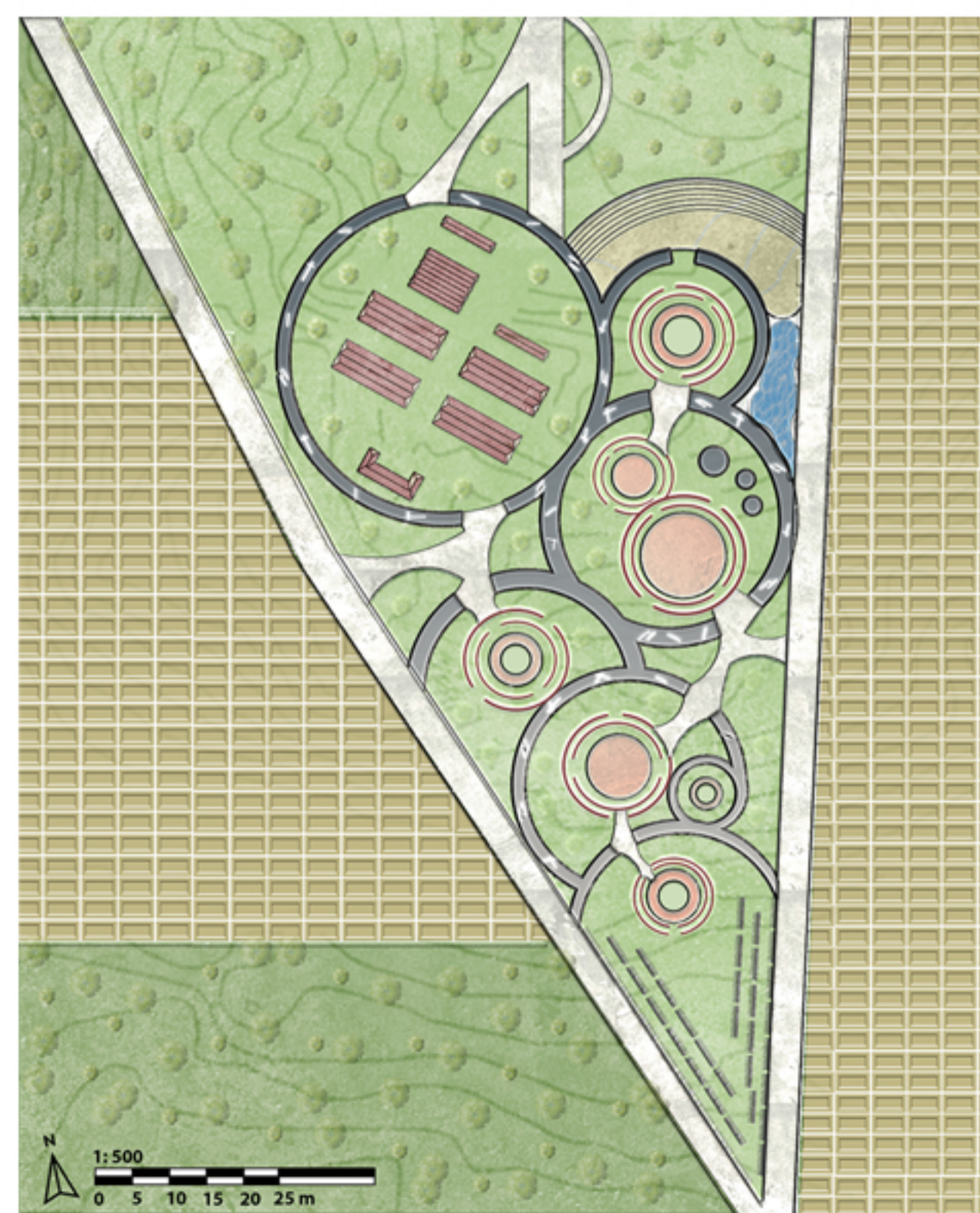
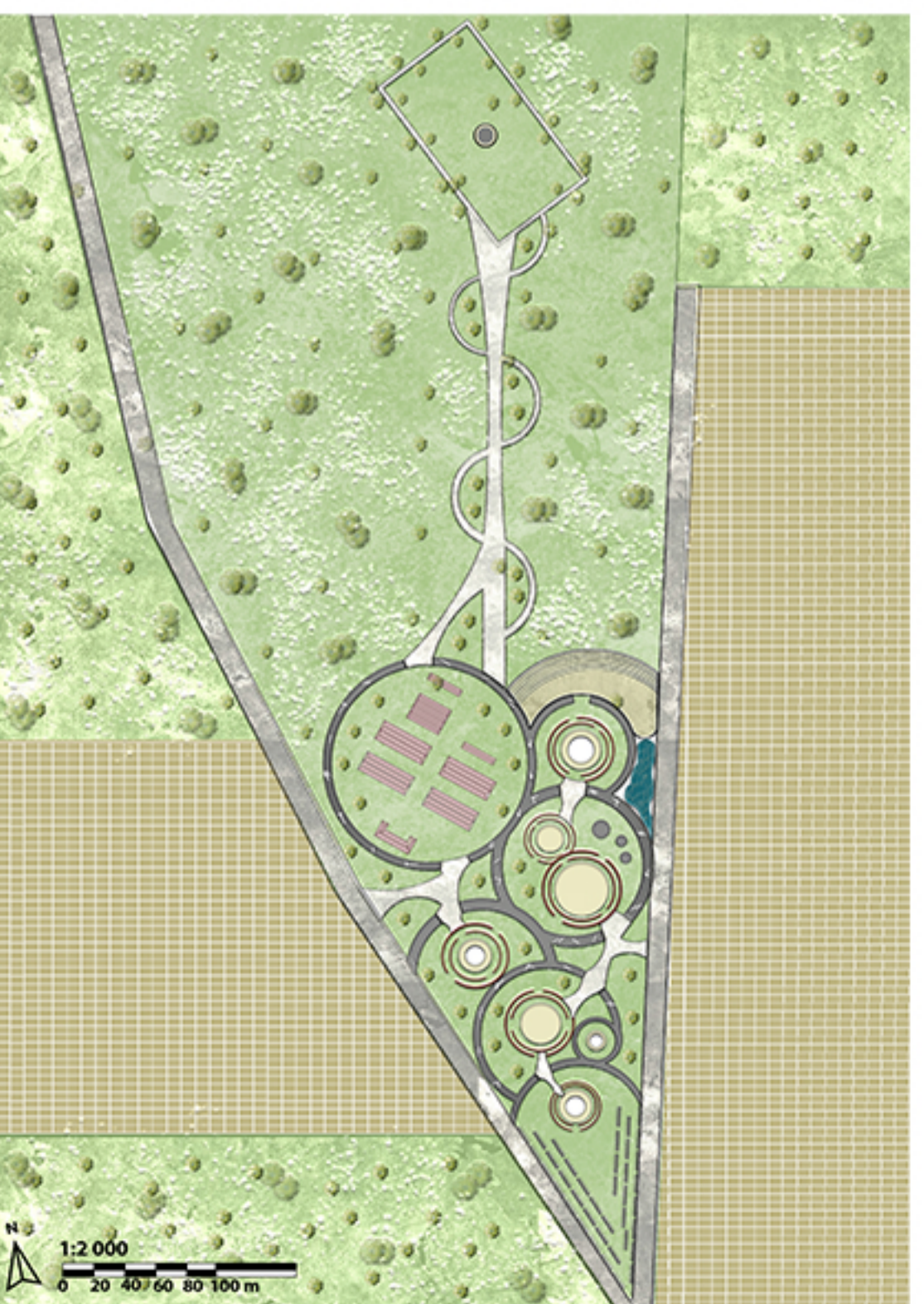


LOCATED IN TUCUMÁN, ARGENTINA, THE SITE EXISTS WITHIN A LANDSCAPE MARKED BY BOTH NATURAL DENSITY AND HISTORICAL SIGNIFICANCE. POSITIONED NEAR THE FORMER ARSENAL AREA, IT CARRIES LAYERS OF MEMORY ASSOCIATED WITH PAST

EVENTS AND SPATIAL TRANSFORMATIONS. THE SURROUNDING VEGETATION AND RELATIVE ISOLATION FROM THE URBAN CORE CREATE A CONDITION FOR REFLECTION, WHERE ARCHITECTURE ENGAGES WITH BOTH THE PHYSICAL ENVIRONMENT AND THE INTANGIBLE TRACES EMBEDDED WITHIN IT.

THE PROGRAM IS DISTRIBUTED ACROSS A SERIES OF CONNECTED CIRCULAR SPACES, ACCOMMODATING CULTURAL, EDUCATIONAL, AND PUBLIC FUNCTIONS. THESE ZONES ARE ORGANIZED TO SUPPORT BOTH INDIVIDUAL REFLECTION AND COLLECTIVE EXPERIENCE, RESPONDING TO THE HISTORICAL WEIGHT OF THE SITE. THE ARRANGEMENT ENCOURAGES A GRADUAL TRANSITION BETWEEN OPEN LANDSCAPE AND ENCLOSED SPACES, REINFORCING THE RELATIONSHIP BETWEEN MEMORY AND OCCUPATION.

THE MASTER PLAN RESPONDS TO THE SPECIFIC CONDITIONS OF THE TUCUMÁN SITE, INTEGRATING ARCHITECTURE WITHIN ITS EXISTING LANDSCAPE AND HISTORICAL CONTEXT. A SYSTEM OF CONCENTRIC AND FRAGMENTED GEOMETRIES ORGANIZES THE PROJECT, ESTABLISHING A HIERARCHY BETWEEN CENTRAL AND PERIPHERAL ZONES. THE INTERVENTION REMAINS LOW AND HORIZONTALLY ARTICULATED, ALLOWING THE SURROUNDING ENVIRONMENT AND HISTORICAL PRESENCE OF THE SITE TO REMAIN DOMINANT.



Public services Cultural Zones Educational zone
Circulation Outdoor Lounge Preserved Zone

Primary Access Primary Movement Spine Site Main Entrances Programmatic Nodes Inner Core Entrances Secondary Landscape Paths