

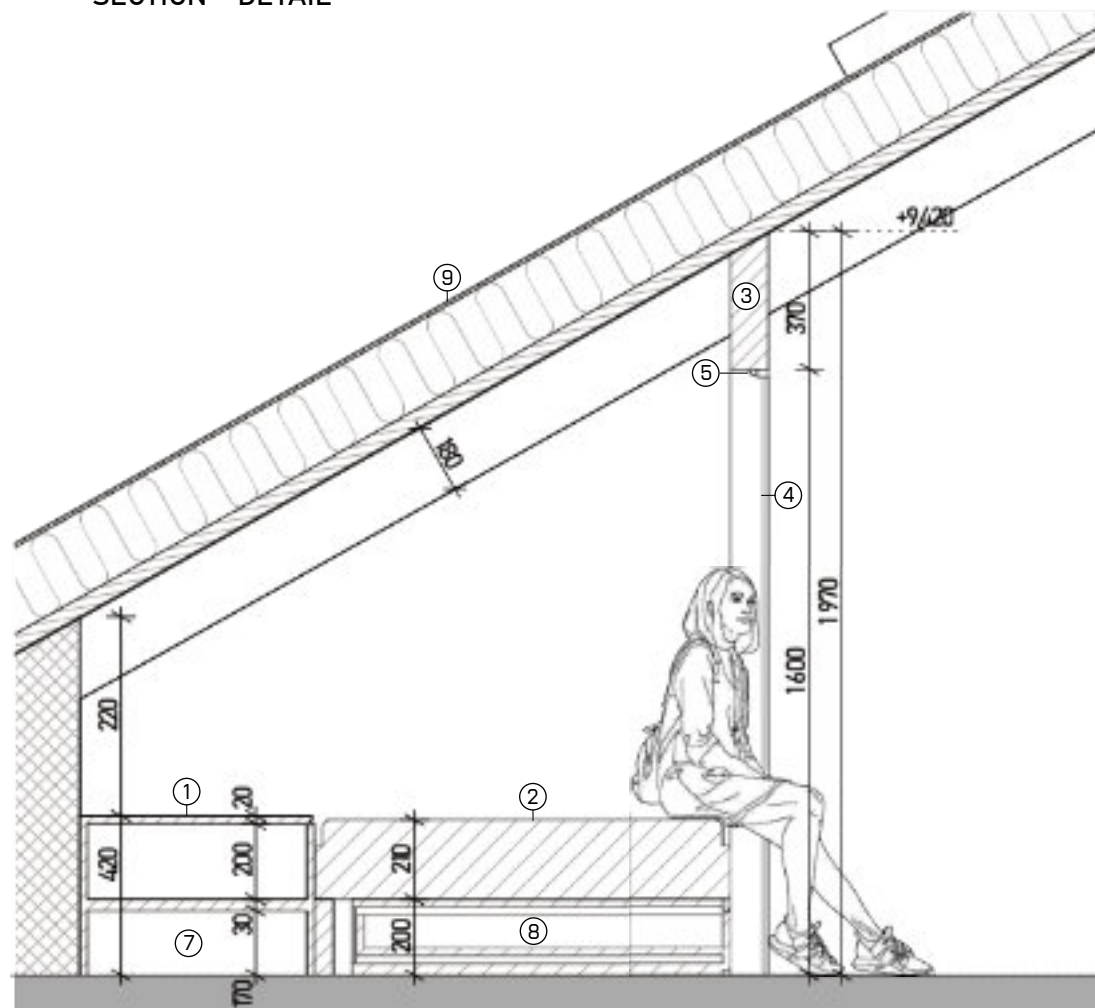
# Adaptation of the Local Railway Station in Prostějov

The adaptation project of the local railway station in Prostějov breathes life back into a historical building that lost its original function following the construction of a new train stop. The design transforms the building into a vibrant community center, which, due to its location on the axis of Rejskova Street, creates a natural landmark within walking distance of the town center. The urban design replaces underutilized paved surfaces with a linear park and a new public space featuring a water element, the shape of which symbolically recalls a railway track. Disused tracks come alive thanks to seasonal refreshments located in a decommissioned train carriage.

The layout is distributed across four levels with an emphasis on multi-functionality. The ground floor serves the public – the eastern part is occupied by a bistro with outdoor seating, while the western wing offers a multifunctional hall with facilities. The basement combines technical operations with a creative function in the form of a pottery workshop with authentic fair-face brickwork. The upper floors are designed for accommodation; the first floor provides eight separate apartments for short-term rent, while the attic offers group accommodation. Designed here are original sleeping cabins, which ensure privacy within a shared space using curtains and an integrated storage system.

The architectural expression unifies the interior with the exterior through the material palette and color scheme. Ash wood and light terrazzo tiles are complemented by stainless steel elements in the bistro and kitchenettes. A key accent is a soft green paint, which projects from the structures on the platform to the interior details such as handles and furniture. The sustainability of the project is highlighted by a construction detail in the attic, where the partition walls and cabin furniture are designed from recycled PackWall boards, thereby giving the adaptation a modern ecological dimension while maintaining respect for the original building.

SECTION - DETAIL



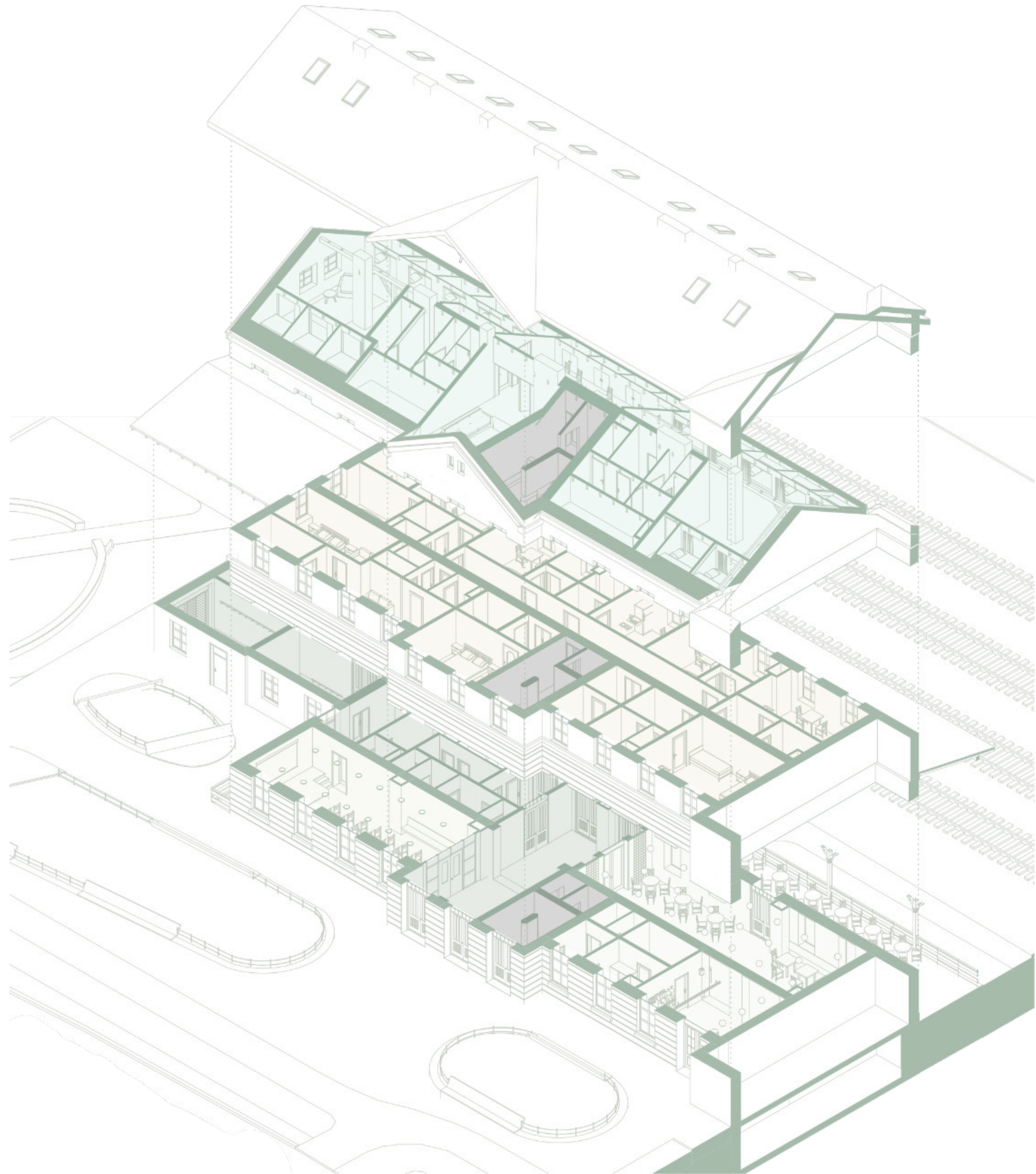
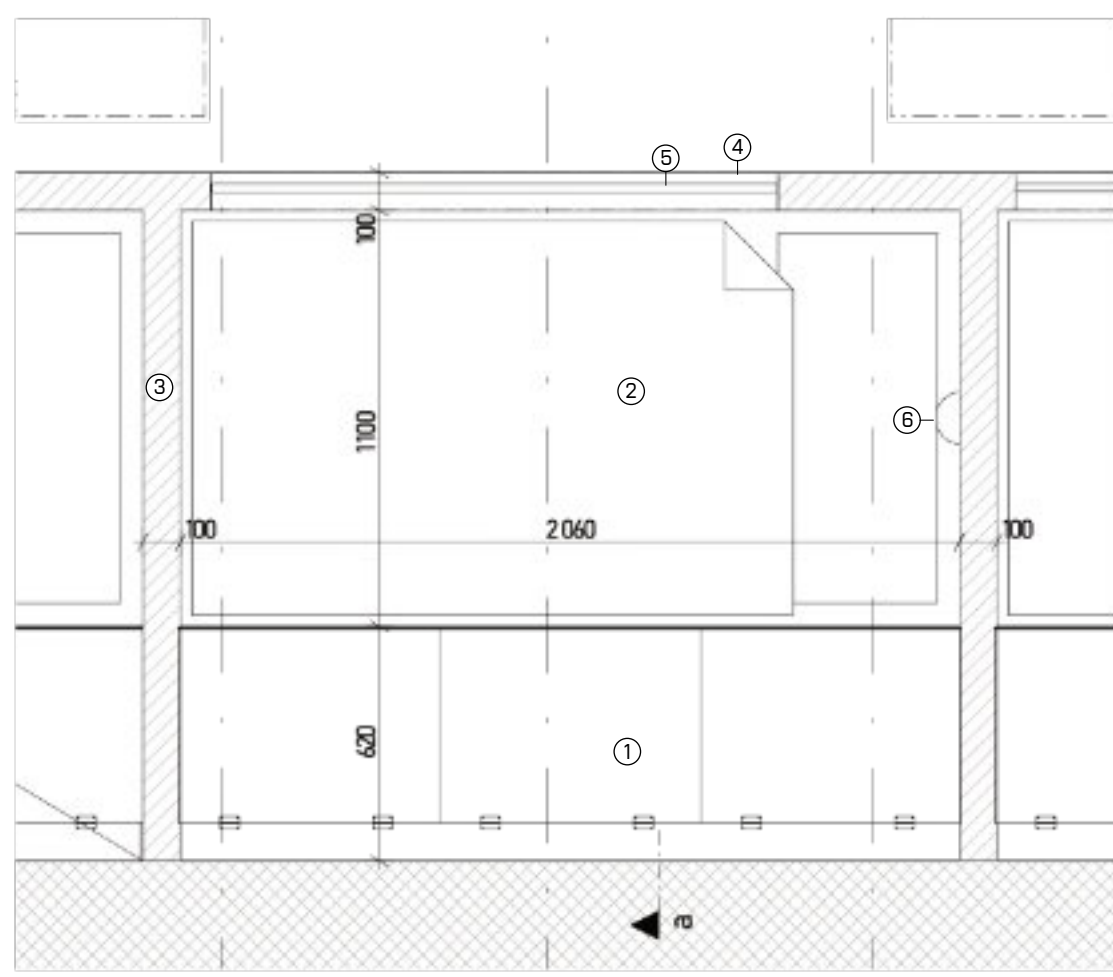
LEGEND

- ① Lockable cabinet made of PackWall - top-opening with a hydraulic strut
- ② Single bed - structure made of PackWall boards
- ③ Sandwich partition wall made of a wooden frame and PackWall boards
- ④ Cotton curtain - grey color
- ⑤ LED light strip
- ⑥ Semi-circular reading light
- ⑦ Space for electricity routing and ventilation (HVAC)
- ⑧ Under-bed drawers made of PackWall boards
- ⑨ Roof structure with over-rafter insulation and exposed rafters

3.NP



FLOOR PLAN - DETAIL



- Bistro
- Multipurpose room
- Utility spaces
- Staircase and elevator
- Short-term lodging
- Short-term lodging for groups

