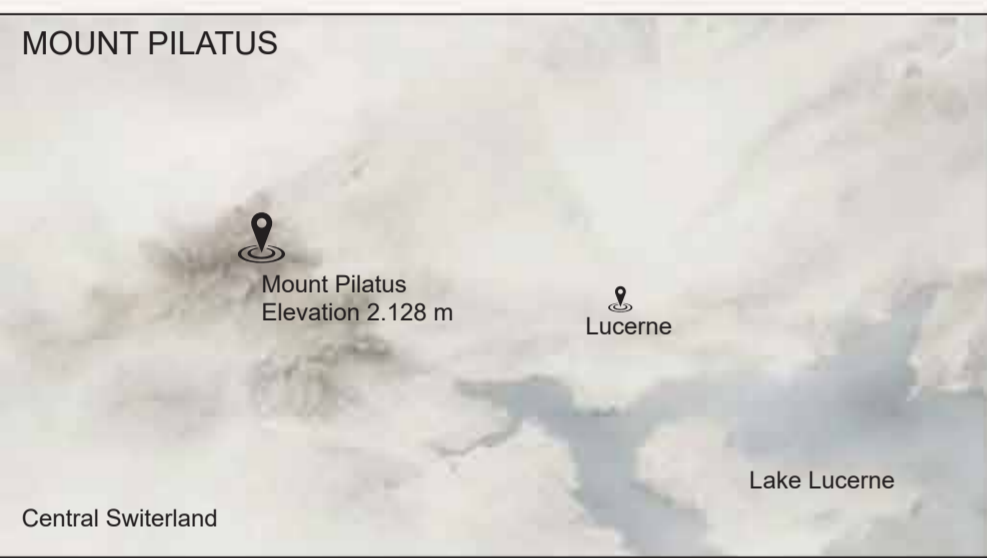


THE SUBTRACTED HORIZON

A PAVILION OF VISCERAL WAR PEACE

The Subtracted Horizon is an underground pavilion in the Swiss Alps that powerfully symbolizes the loss of peace and freedom caused by war. Hidden beneath a pristine alpine meadow, the pavilion is rendered almost invisible from the surface. As visitors descend into a stark, raw trench carved into the earth, they leave behind the open and endless alpine horizon. The architecture uses pure subtraction, removing the landscape to create a profound spatial experience.





SITE ANALYSIS

TOPOGRAPHY
Sloping alpine meadow with rock outcrops.

HORIZON & VIEW
wide panoramic view to the alps and the lake lucerne.

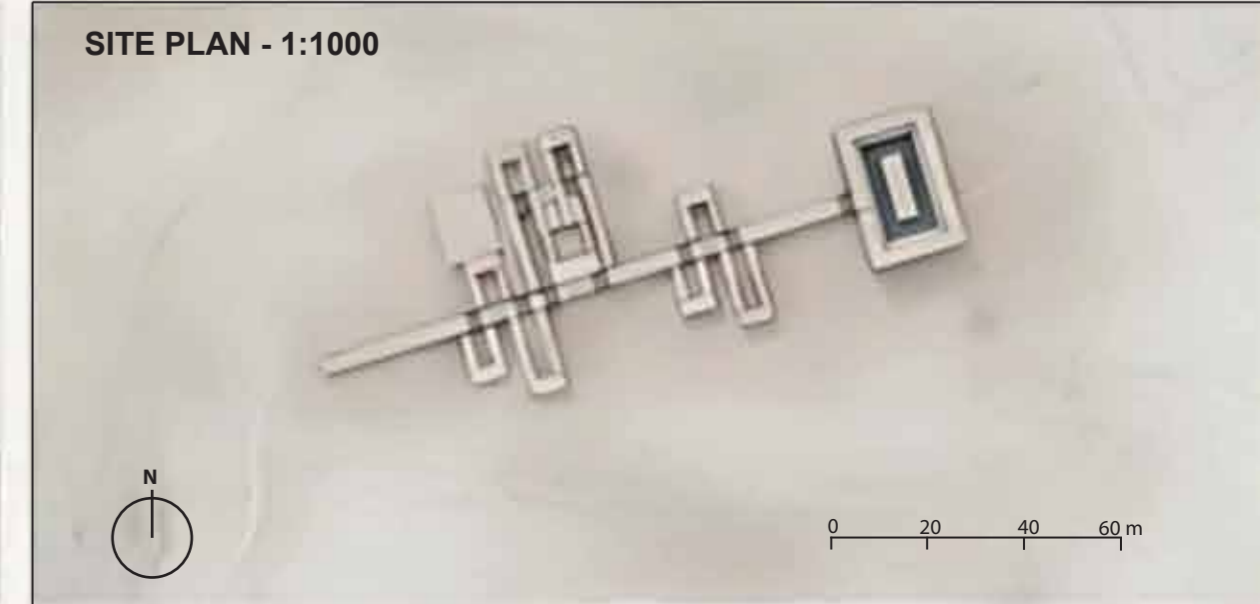
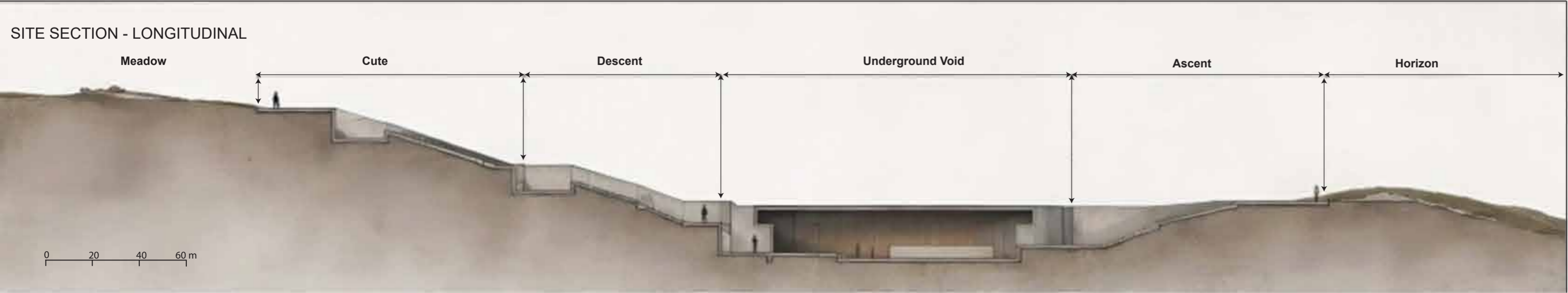
CLIMATE & EXPOSURE
Frequent fog strong winds and cold temperature.

SITE STRATEGY
A minimal incision subtracted from the land. Earth returned to restore the horizon.



- 01 APPROACH**
The landscape is untouched.
The pavilion is invisible from afar.
- 02 DESCENT**
A sharp cut opens in the earth.
The horizon begins to fracture.
- 03 BURIED CHAMBER**
The world is muted.
Science, weight, and stillness
- 04 RETURN**
The ascent restored the horizon.
Light and space return.
- 05 MEMORIAL SPACE**
Honor the heros.
Special day for the country.

1. Invisible from afar 2. The Cut Appers 3. Descent & Desprivation 4. The underground Chamber 5. The Return 6. The Memorial Space



PILATUS MEMORIAL PAVILION

A PLACE OF REMEMBRANCE AND CONTEMPLATION, PILATUS, SWITZERLAND

Carved gently into the alpine slope, the pavilion creates a quiet journey from the vastness of the landscape to an inner world of the light and reflection. Earth, light, and material coverage to honor memory and presence.

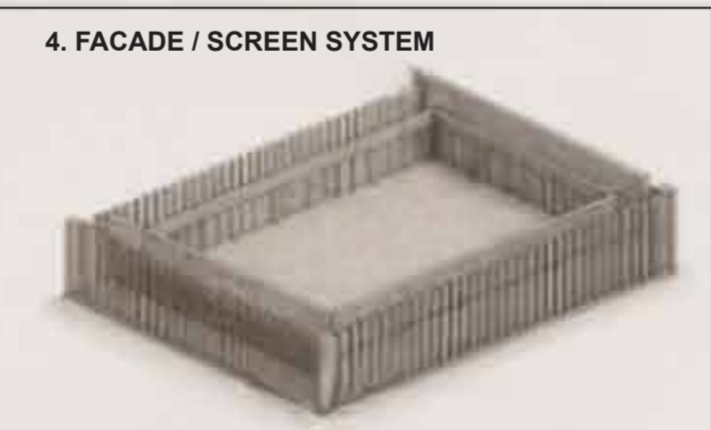
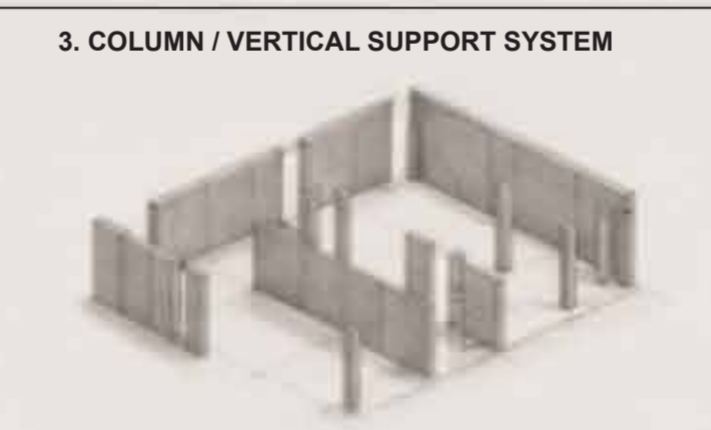


1. DESCENT INTO THE EARTH

2. CHAMBER OF REMEMBRANCE

3. TRANSITION THROUGH LIGHT

4. ASCENT OF THE LANDSCAPE

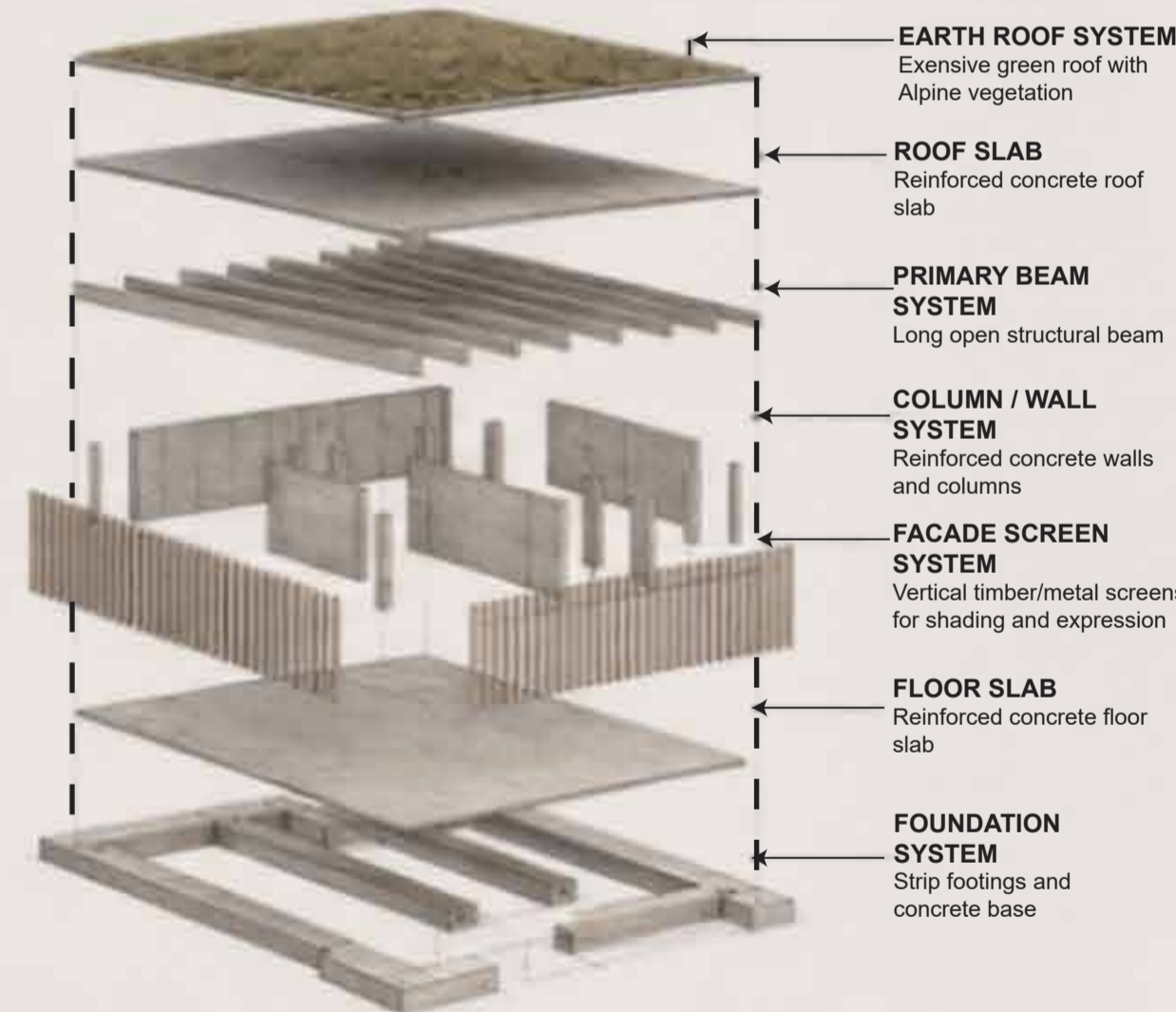


1. PRIMARY BEAM SYSTEM
Long span reinforced concrete beams create the primary structure direction, bridging between retaining walls and expressing the pavilion inquarity .

2. ROOF / RAFTER SUPPORT LOGIC
Secondary rafters sit on the primary beams, supporting the roof slab and distributing loads while defining the gentle roof slope towards the landscape.

3. COLUMN / VERTICAL SUPPORT SYSTEM
Reinforced concrete walls and columns provide vertical support and stability, anchoring the pavilion into the alpine terrain.

4. FACADE / SCREEN SYSTEM
A rhythm of slender vertical members creates permeable screen, filtering light, and framing view while maintaining privacy and calm.



5. EXPLODED PAVILION ASSEMBLY DIAGRAM

6. STRUCTURAL RELATIONSHIP - SECTIONAL AXONOMETRIC



The pavilion is held between retaining walls, with beams spanning across to create an open interior volume. The structure works with the landform, establishing a continuous journey from earth to light.

7. STRUCTURAL RELATIONSHIP - AXONOMETRIC OVERVIEW



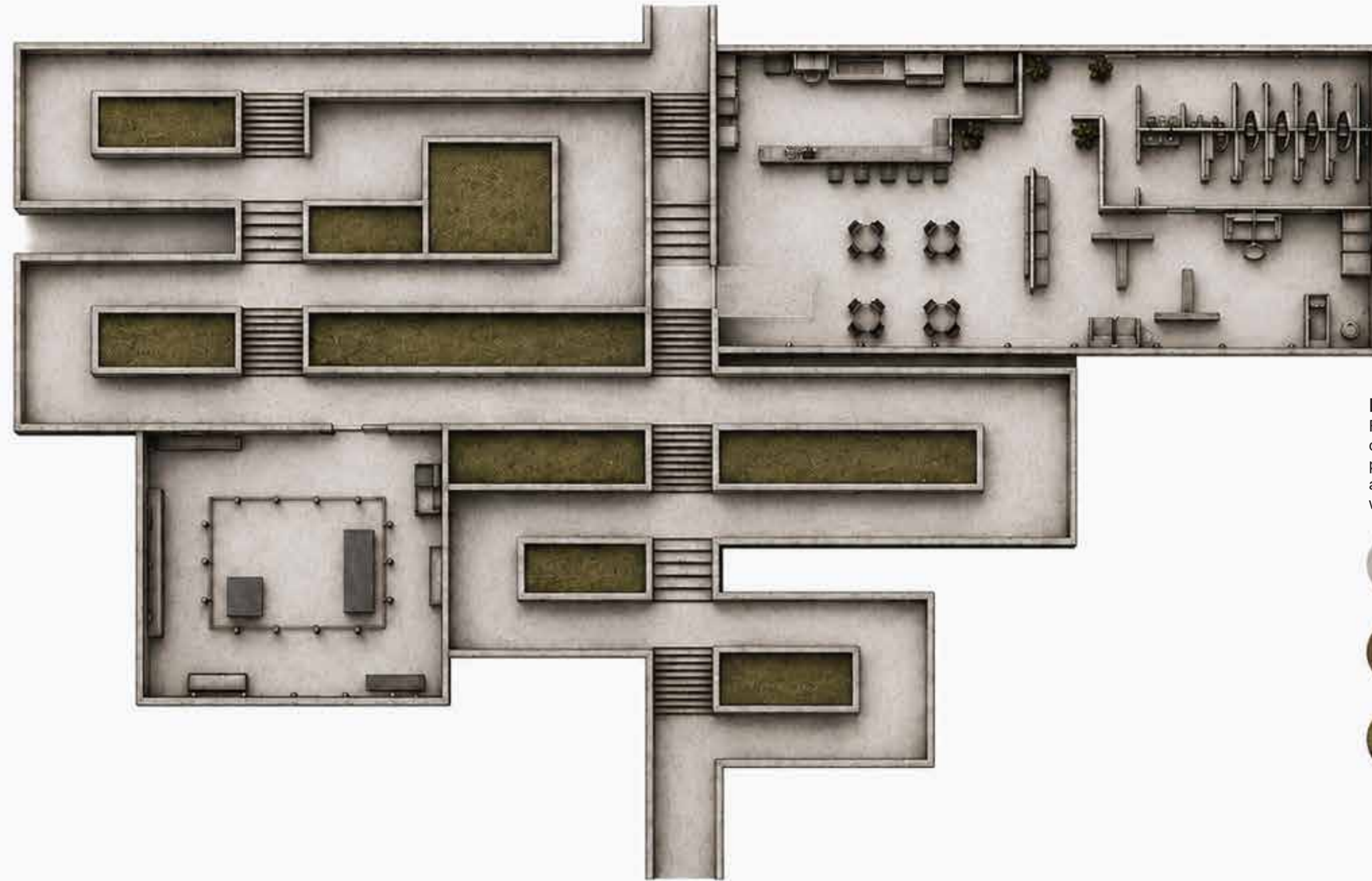
The pavilion's components work together - structure, enclosure, and landscape forming a grounded yet lightweight presence in the alpine setting.

FIRST FLOOR PLAN

The journey continues along a sequence of meadows, ramps and descending paths that lead to space of reflection, learning and remembrances.

PROGRAM

- 1 **COFFEE SHOP**
A place to pause and gather.
- 2 **TOILETS**
Simple, quiet, and respectful area.
- 3 **GIFT SHOP**
Resources and meaningful objects.
- 4 **ART GALLERY**
Space for reflection and expression
- 5 **GREEN COUNTRYARDS**
Meadow that bring light and calm to the journey
- 6 **RAMPS & STAIRS**
Guiding movement through descent and return.



MATERIALITY

Raw concrete, earth and grass form a quiet material palette that ground the pavilion in the landscape. The spaces are defined by light, shadows and the weight of the surrounding earth.

