

# JARDIMS DA AGUA:

This mixed-use project is located in the Água Branca neighborhood of São Paulo. The proposal extends the Museum of Indigenous Cultures of São Paulo, creating a cultural and residential complex that reinforces Indigenous presence and memory within the contemporary city.

The architectural composition is organized into three volumes, each inspired by a fundamental water ritual of Guarani culture: drinking, cleansing, and celebrating rain. These rituals materialize in three major public elements: the Rain Plaza, the Garden Pool, and the Tea Garden, which together create an urban sequence of sensory and symbolic encounters.

Through these spaces, water becomes a medium of connection, inviting residents and visitors to engage with ancestral practices that honor the land and its cycles.

By integrating gardens, water features, and participatory cultural spaces, the project positions architecture as a tool for social and ecological healing. It proposes a habitable landscape almost a living painting where Indigenous knowledge, community life, and urban nature coexist.

In doing so, the building becomes a place that preserves memory, fosters inclusion, and reconnects São Paulo with the rituals that have shaped its identity.

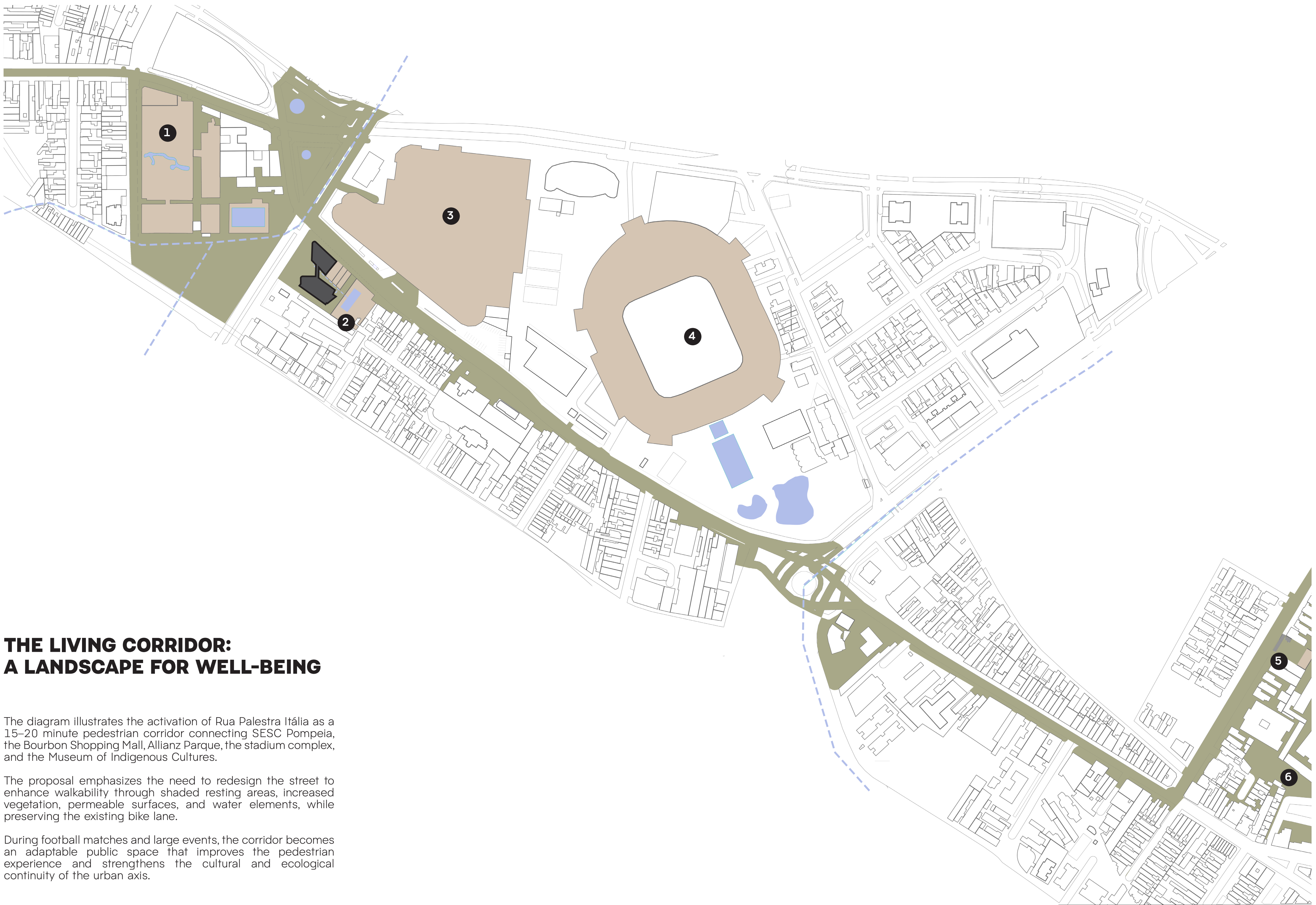


RELATIONSHIP OF THE LIVING CORRIDOR ON PALESTRA ITALIA STREET AND SESC POMPEIA



🕒 SITE PLAN

10 20 30 40 50

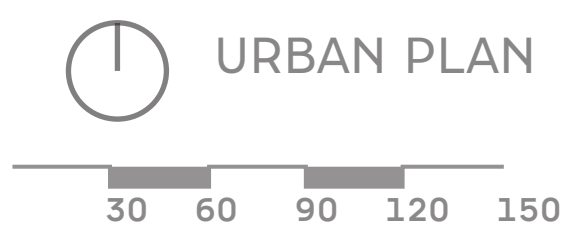


## THE LIVING CORRIDOR: A LANDSCAPE FOR WELL-BEING

The diagram illustrates the activation of Rua Palestra Itália as a 15–20 minute pedestrian corridor connecting SESC Pompeia, the Bourbon Shopping Mall, Allianz Parque, the stadium complex, and the Museum of Indigenous Cultures.

The proposal emphasizes the need to redesign the street to enhance walkability through shaded resting areas, increased vegetation, permeable surfaces, and water elements, while preserving the existing bike lane.

During football matches and large events, the corridor becomes an adaptable public space that improves the pedestrian experience and strengthens the cultural and ecological continuity of the urban axis.



- Living corridor
  - Facilities
  - Bodies of water
  - Urban morphology
- 1 SESC Pompeia
  - 2 Jardims da agua
  - 3 Bourbon shopping mall
  - 4 Allianz Park
  - 5 Museum of Indigenous Cultures
  - 6 Agua Branca Park

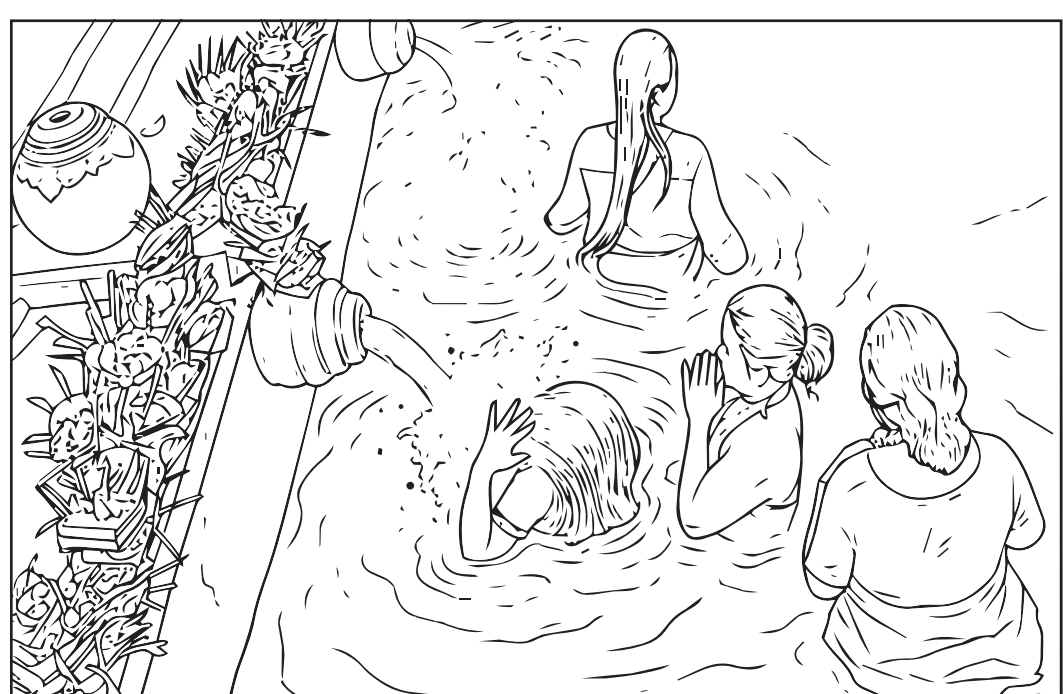
## CONCEPT : GUARANI WATER RITUALS



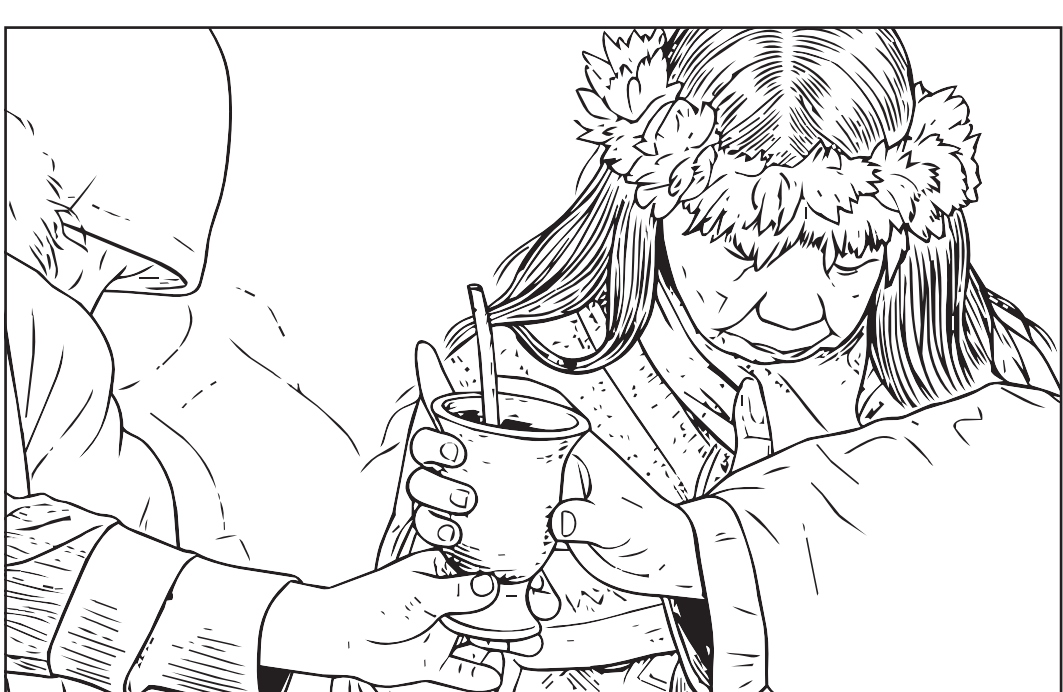
- 1 Rainmaking Rituals**  
Invoke rain during droughts through prayer, dance, song, and offerings to spirits or ancestors. These practices often feature symbolic elements like drums mimicking thunder, water offerings, and community with rituals timed to agricultural cycles.



- 2 The Water Game (Ritual of Gratitude)**  
A ritual performed by the sea to honor the ocean's sustenance, teaching participants to flow in harmony with nature.



- 3 Spiritual Cleansing**  
The Kamayurá people in Xingu perform daily, dawn-to-dusk bathing rituals in their sacred lake, which is believed to connect them to their ancestors and provide spiritual strength. Involves walking into rivers in unison to wash away negative energy, reinforcing their connection to nature.



- 4 Yerba Mate Ritual**  
Variant known as tereré is used, which involves cold water (or fruit juice) mixed with medicinal herbs (poñã ñana). This is an important social and daily ritual in its own right, often used to cool down while maintaining community, especially during times when fires cannot be lit.

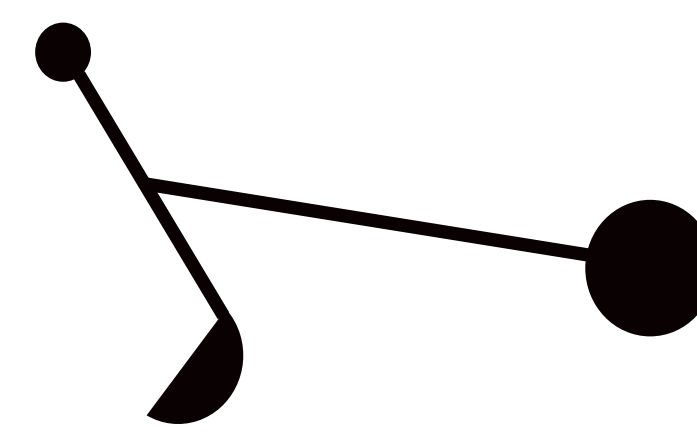
## Claudia Andujar and the Visual Cosmologies of Indigenous Cave Murals



Indigenous Cave Murals in Brasil.



Claudia Andujar, Maloca en chamas.

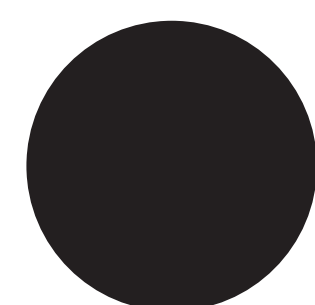


3 rituals: conceptual diagram



Claudia Andujar, The Yanomami struggle.

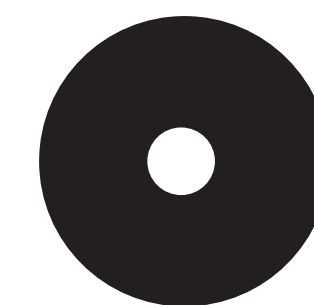
## ICONOGRAPHY OF AQUATIC RITUALS



SEA/  
WATER GROUND  
LEVEL



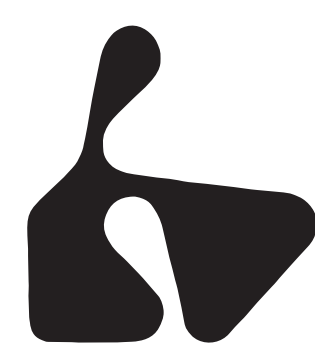
POND/  
WATER  
UNDERGROUND



RAIN/  
WATERFALLING



RAIN/  
WATER ABOVE



MUSIC



TO SING



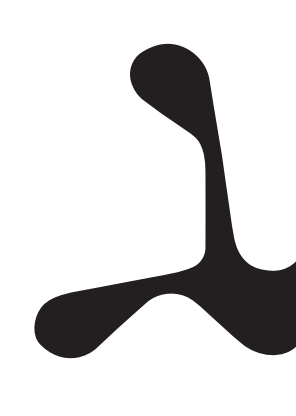
TO DRINK/  
EAT



TO DRINK +  
RAIN+WATER



TO DRINK AROUND  
WATER



TO DANCE



TO DANCE  
UNDER RAIN



TO DANCE ON  
WATER



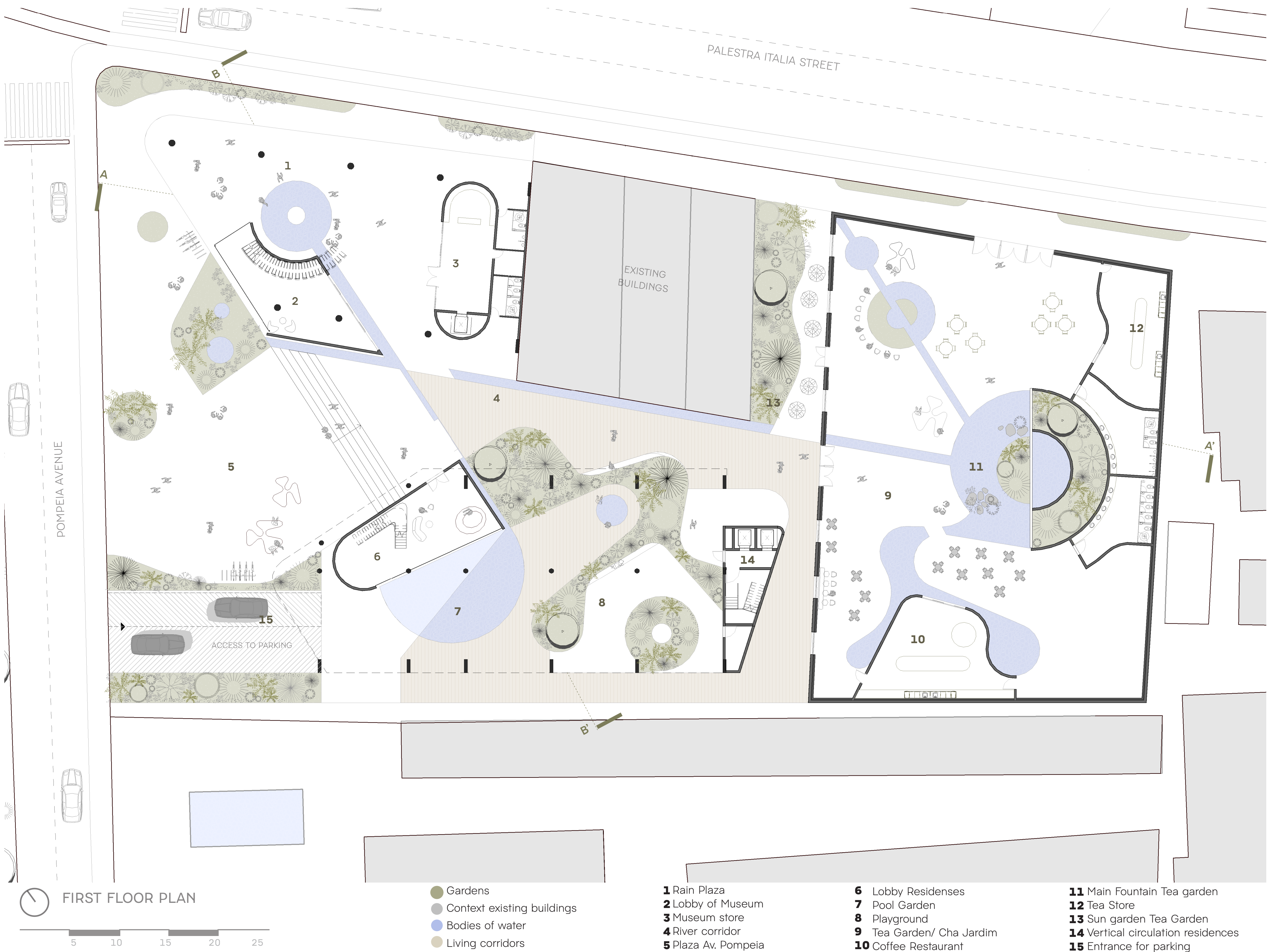
TO PLAY



TO WALK



MAIN ENTRANCE TO INDIGENOUS MUSEUM



PROGRAM

CIRCULATION

WATER FEATURES

VEGETATION

- Residences
- Public areas
- Existing buildings
- Vertical circulation
- Bodies of water
- Public Living corridor

- Plaza
- Parking entrance
- Vertical circulation
- Corridors

- Water collectors
- Rivers
- Pools
- Garden irrigation

- Gardens



TEA GARDEN/ JARDIM DE CHA



LONGITUDINAL SECTION A-A'

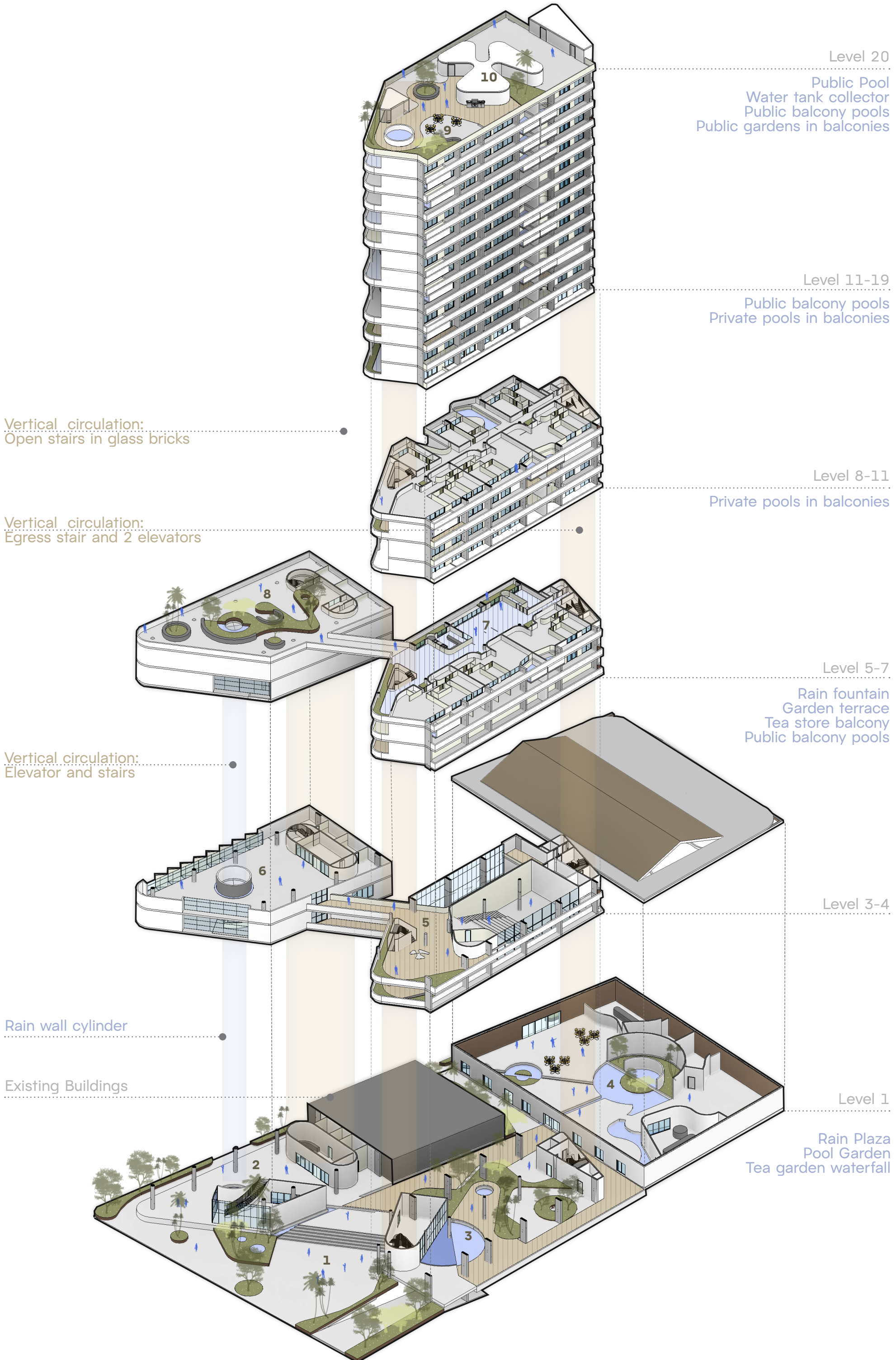
- |                                   |   |                                       |
|-----------------------------------|---|---------------------------------------|
| <b>1</b> Rain Plaza               | <b>6</b> Workshop spaces for craft making   | <b>11</b> Auditorium                  |
| <b>2</b> Water tank Collector     | <b>7</b> Indigenous storytelling space      | <b>12</b> Pools in public balconies   |
| <b>3</b> Museum store             | <b>8</b> Rain wall                          | <b>13</b> Gardens in public balconies |
| <b>4</b> Galleries                | <b>9</b> Public terrace with gardens        |                                       |
| <b>5</b> Dance rehearsal platform | <b>10</b> River corridor/ Existing building |                                       |





CROSS-SECTION B-B'

- 1** Rain Plaza
- 2** Water tank Collector
- 3** Museum store
- 4** Art Gallery
- 5** Dance rehearsal platform
- 6** Workshop spaces for craft making
- 7** Indigenous storytelling space
- 8** Rain wall
- 9** Public terrace with gardens
- 10** River corridor/ Existing building
- 11** Playground and Garden pool
- 12** Auditorium
- 13** Administration of museum
- 14** Tea shopp balcony
- 15** Garderns in public balconies
- 16** Private pools
- 17** Water collector / Technical rooms
- 18** Upper garden Terrace
- 19** Parking



EXPLODED AXONOMETRIC

- 1** Workshop spaces for craft making
- 2** Indigenous storytelling space
- 3** Rain wall
- 4** Public terrace with gardens
- 5** River corridor/ Existing building
- 6** Playground and Garden pool
- 7** Auditorium
- 8** Administration of museum
- 9** Tea shopp balcony
- 10** Garderns in public balconies



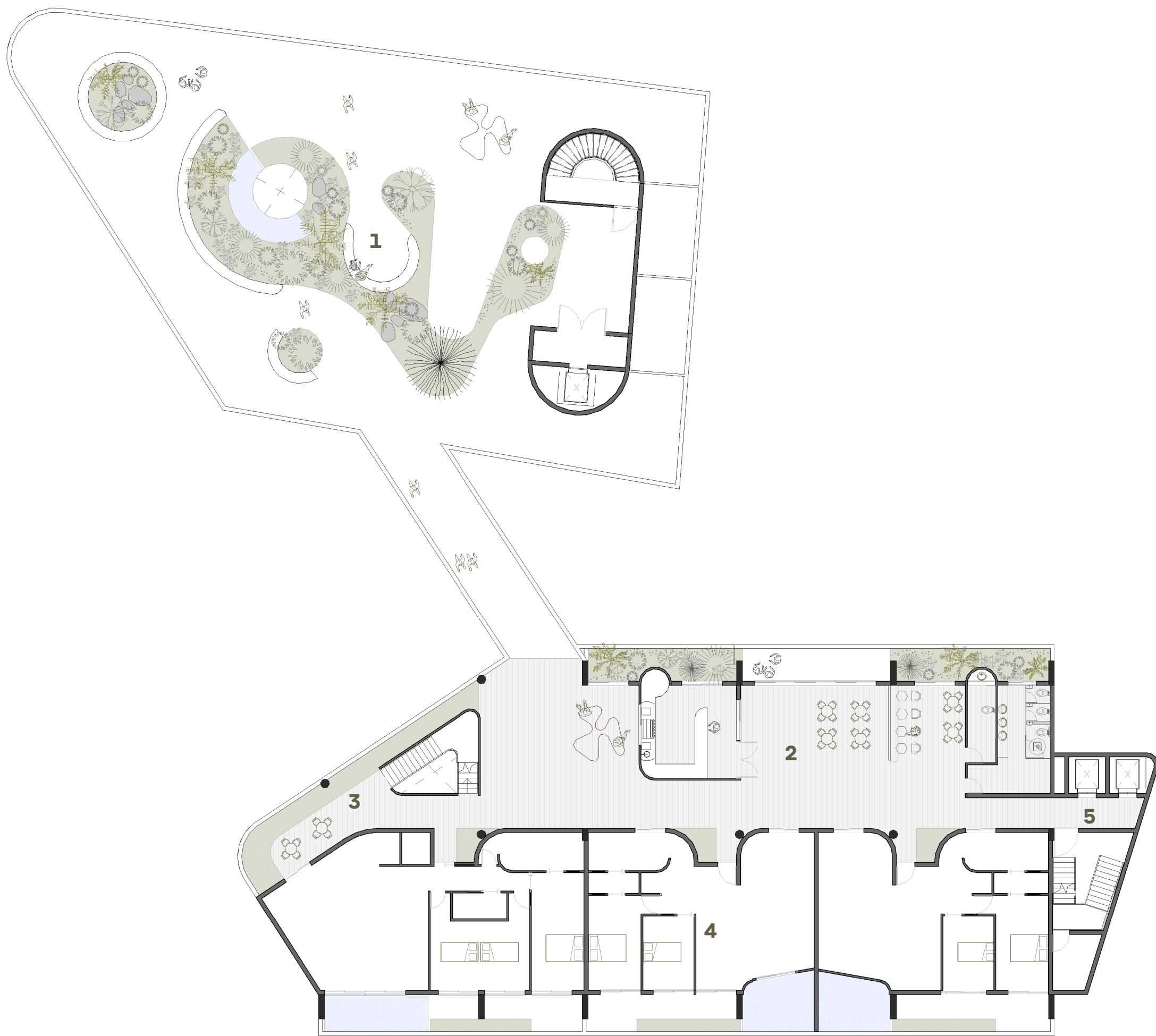
POMPEIA PLANZA MAIN ENTRANCE OF JARDIMS DA AGUA



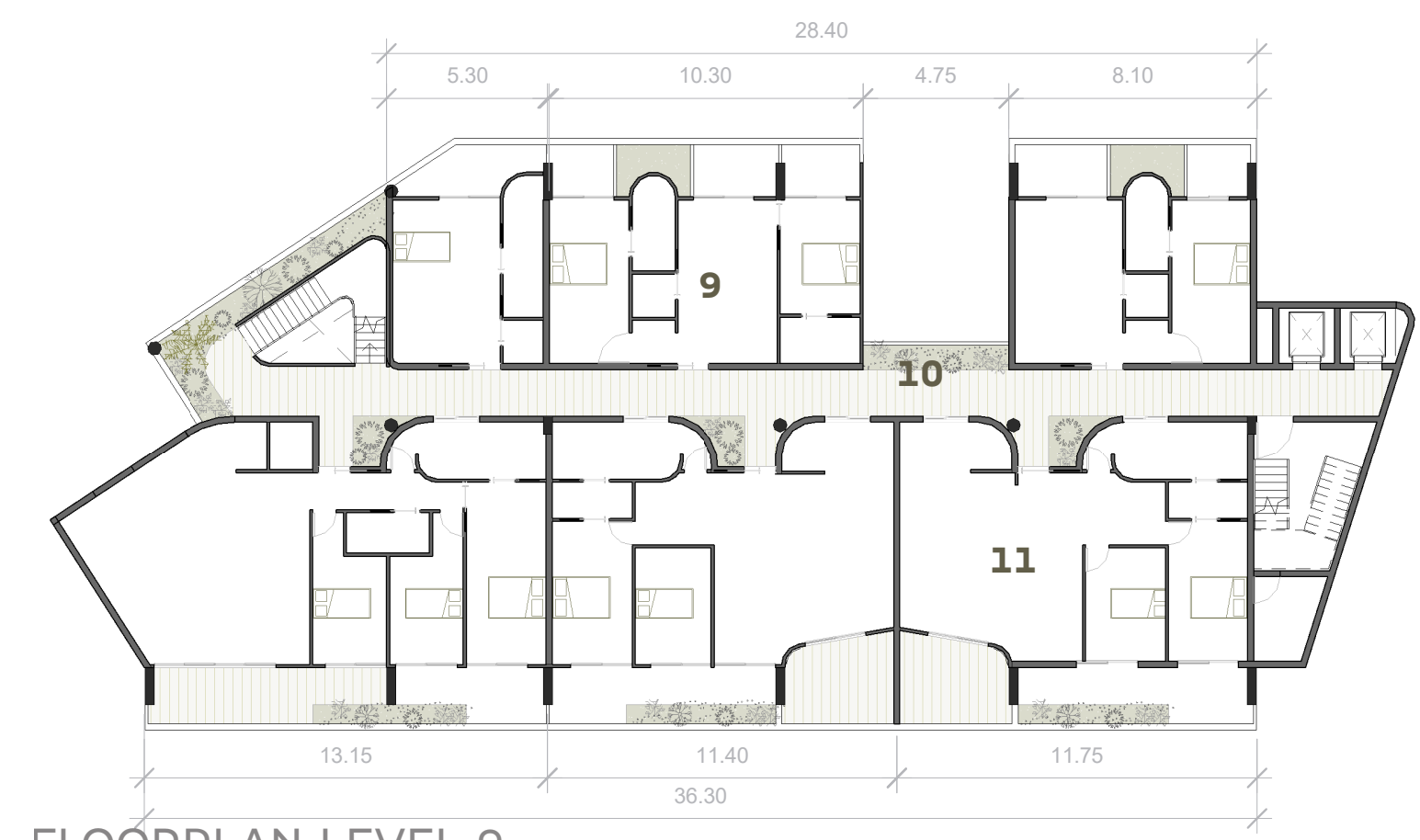
POOL GARDEN AND PLAYGROUND



RAIN PLAZA AND THE VISUAL CONECTION WITH SESG POMPEIA



FLOORPLAN LEVEL 8



FLOORPLAN LEVEL 9

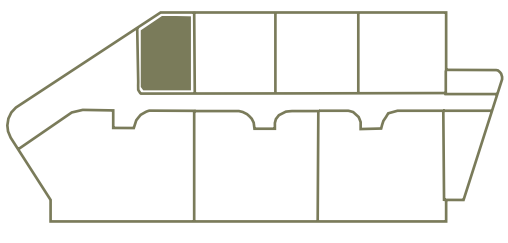


FLOORPLAN LEVEL 10

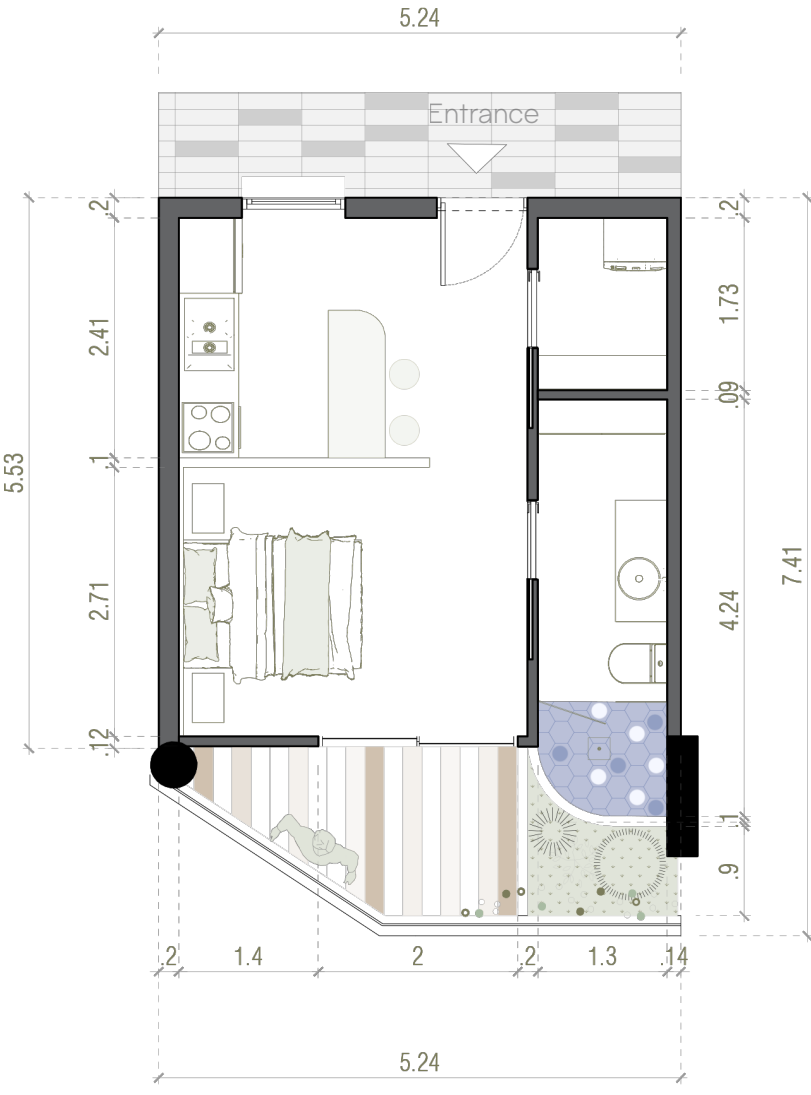
- 1 Public terrace with gardens
- 2 Tea shop
- 3 Green Balcony
- 4 Units type C and D
- 5 Vertical circulation

- 6 Units A and B
- 7 Pool Balcony
- 8 Units C and D with pools
- 9 Units A and B
- 10 Balcony to pools

- 11 Units C and D
- 12 Comunnal gardens
- 13 Units A and B
- 14 Units C and D



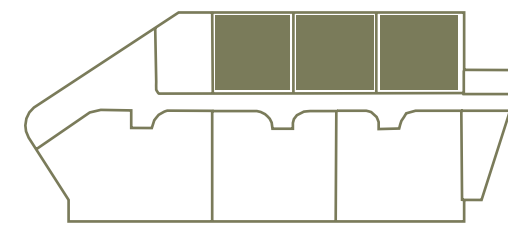
STUDIO: 1 PERSON  
AREA: 37 m<sup>2</sup>



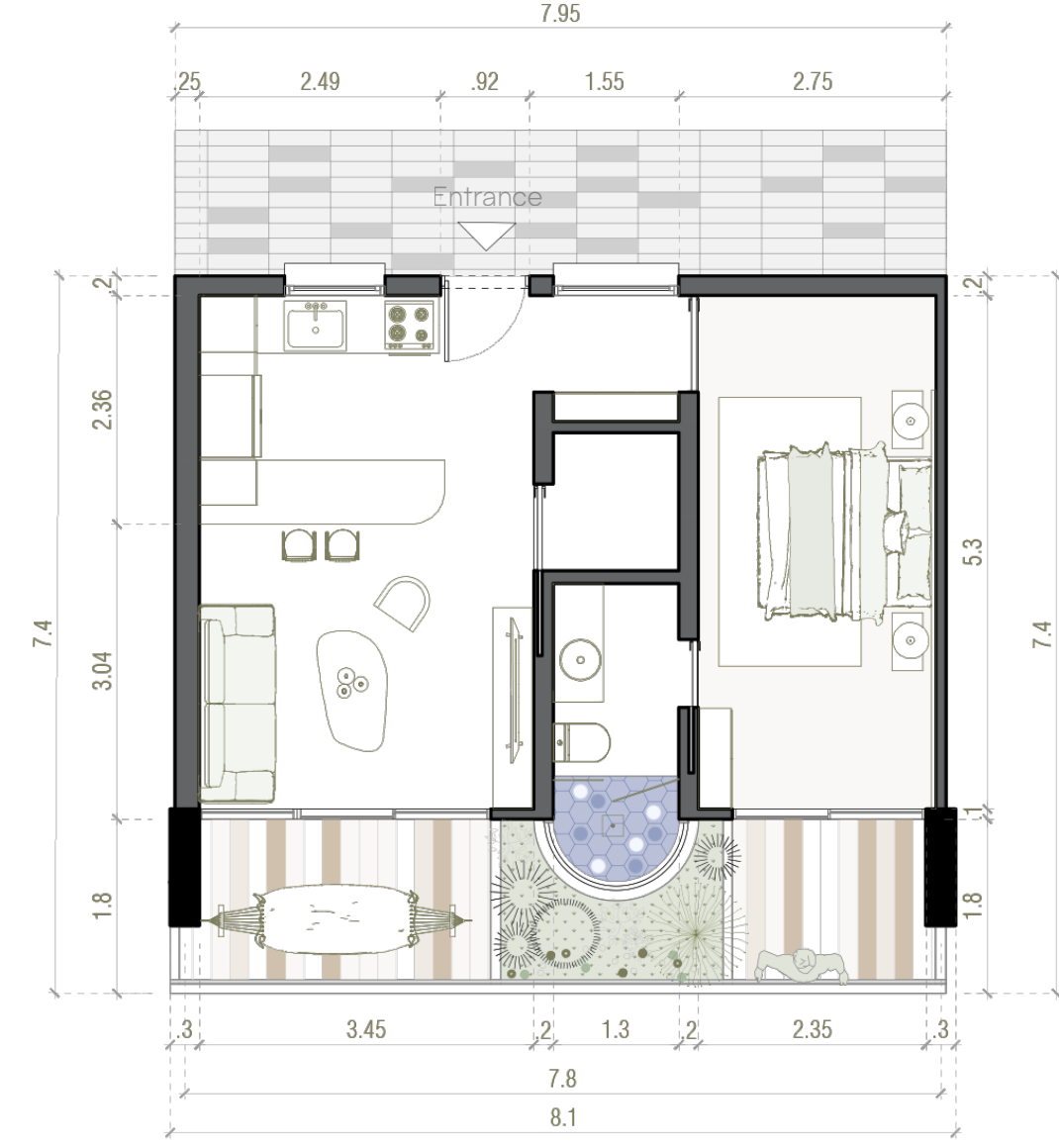
UNIT TYPE A STUDIO



- 1 Kitchen
- 2 Laundry
- 3 Bathroom
- 4 Bedroom
- 5 Balcony



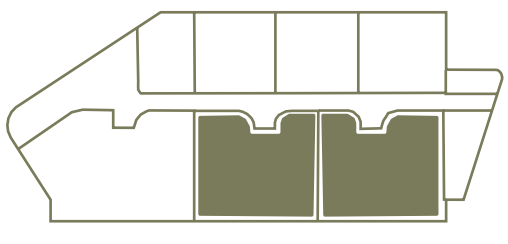
UNIT 1 PERSON  
AREA: 54 m<sup>2</sup>



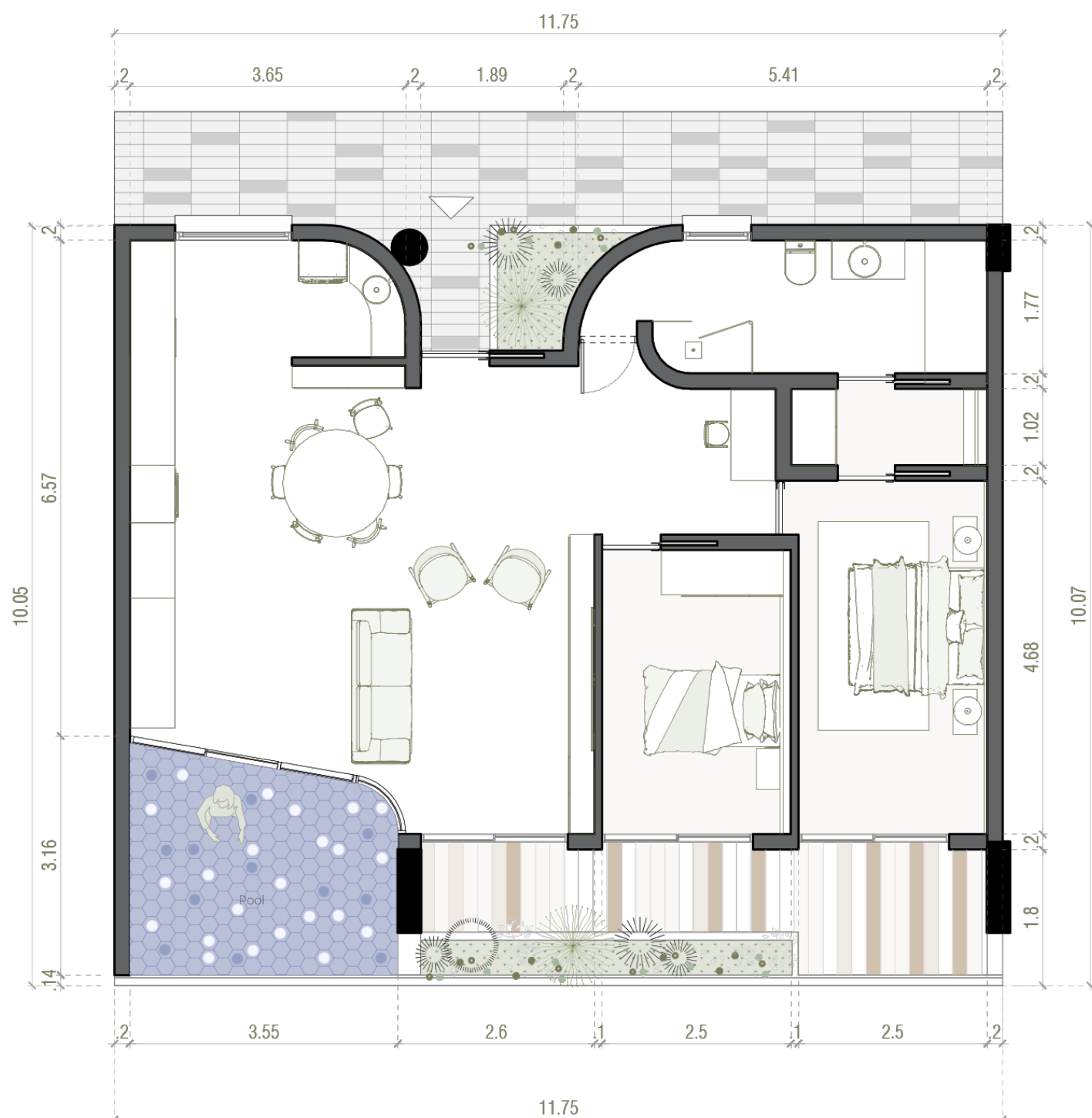
UNIT TYPE B ONE BEDROOM



- 1 Kitchen
- 2 Livingroom
- 3 Balcony
- 4 Bedroom
- 5 Bathroom
- 6 Laundry
- 7 Garden



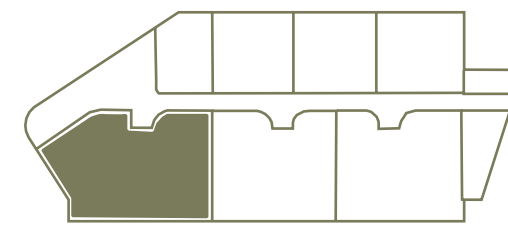
UNIT 2 PEOPLE  
AREA: 105 m<sup>2</sup>



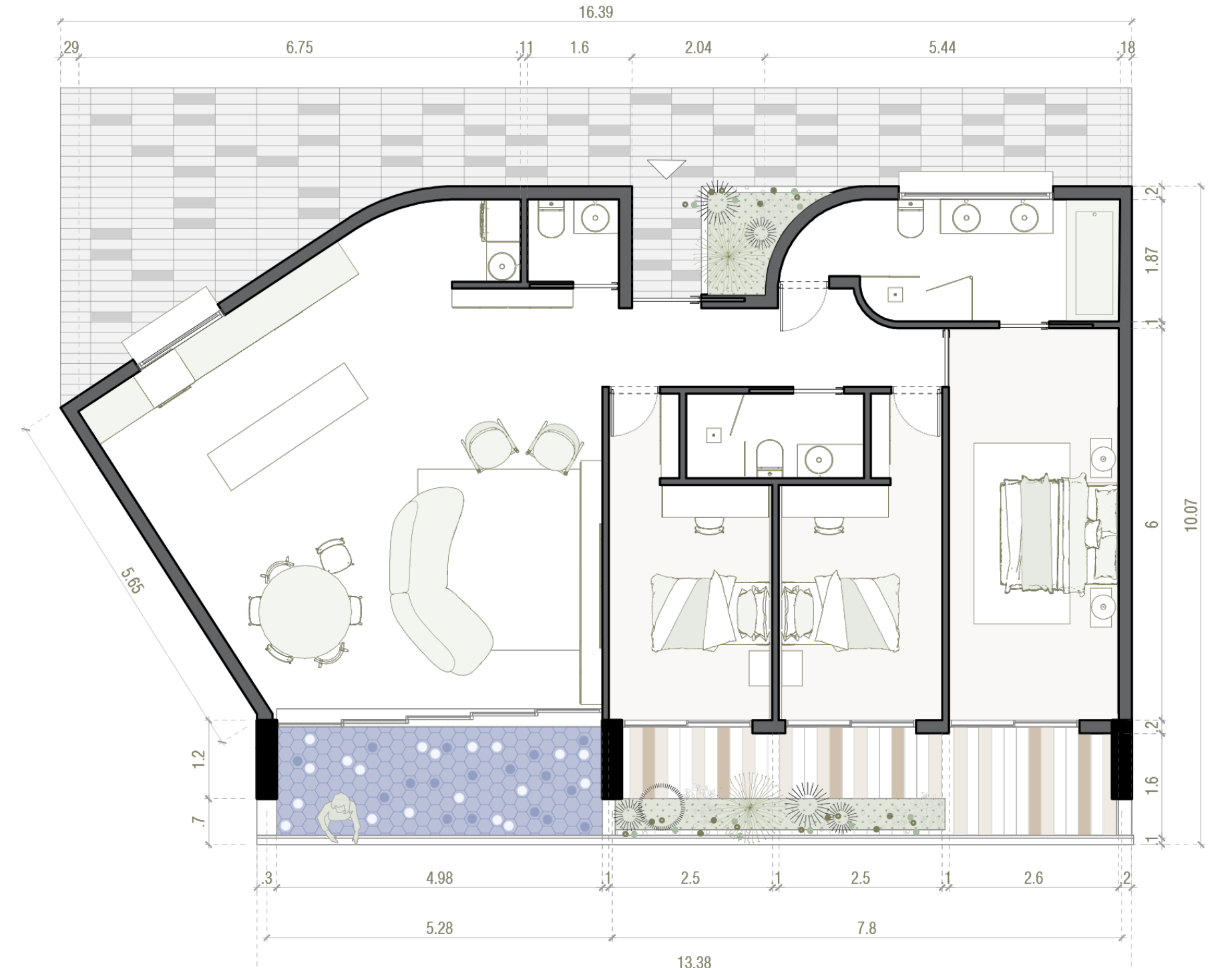
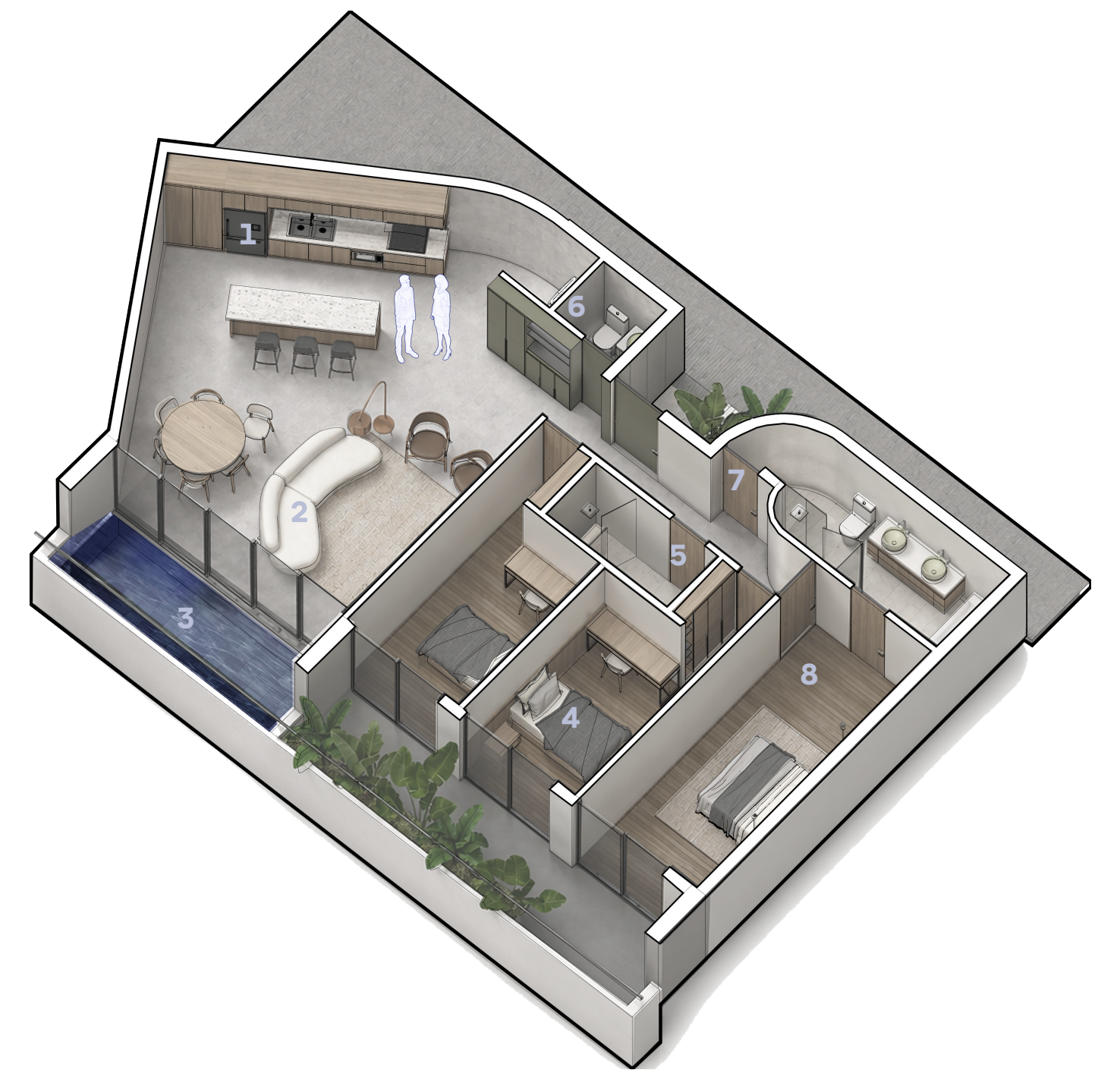
UNIT TYPE C TWO BEDROOM



- 1 Kitchen and laundry
- 2 Livingroom
- 3 Pool Balcony garden
- 4 Bedroom 2
- 5 Bathroom
- 6 Walking closet
- 7 Master room
- 8 Balcony



UNIT 3 PEOPLE  
AREA: 130 m<sup>2</sup>



UNIT TYPE D THREE BEDROOM



- 1 Kitchen and laundry
- 2 Livingroom
- 3 Pool Balcony garden
- 4 Bedroom 2 and 3
- 5 Bathroom 2
- 6 Social wc
- 7 Bathroom
- 8 Master room