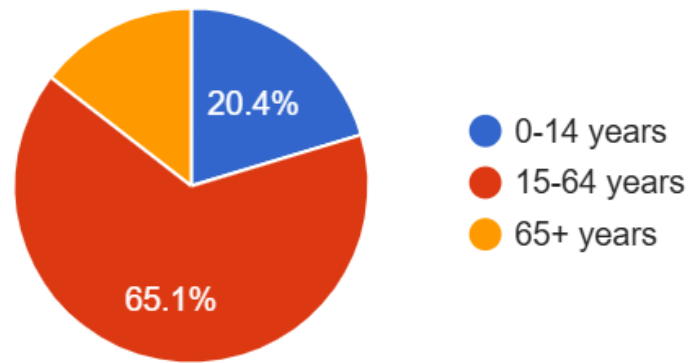


KOZARMILENY CIVIC CENTER

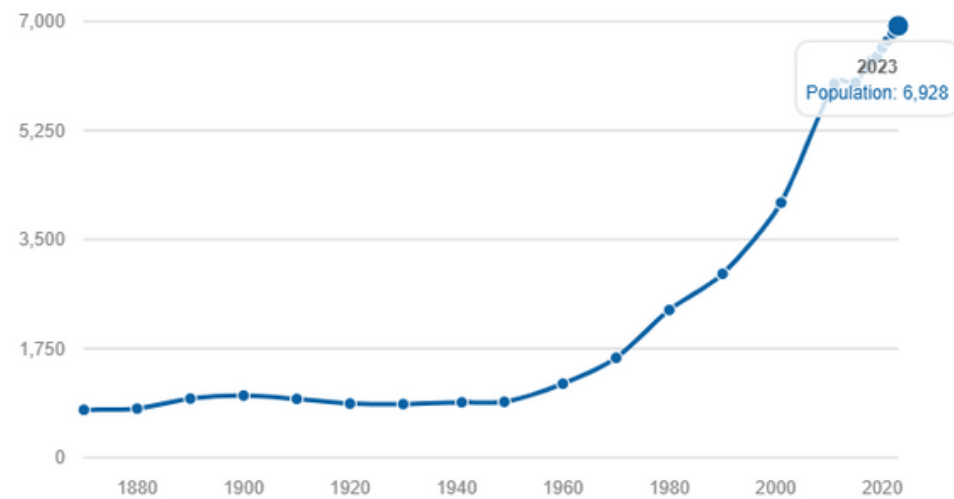
COMPLEX PROJECT
FINAL PRESENTATION

Why Kozarmisleny & why a civic center?

Kozármisleny was selected as a site due to its increasing population and transitional condition, which creates a growing need for civic infrastructure that strengthens social cohesion without compromising village identity.



Kozarmisleny population increasing rates throughout the years:



Why Kozarmisleny & why a civic center?

In a village context especially:

- Public life is often fragmented.
- Activities happen informally or in unsuitable spaces.
- There is no single place that represents collective identity.



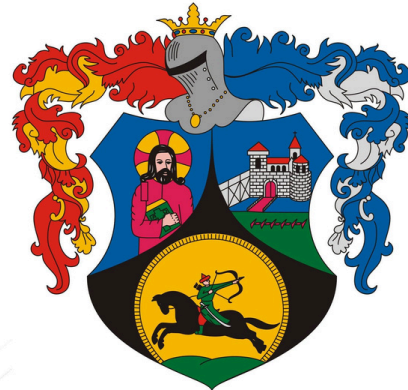
JÓZSA GERGELY FOLK DANCE ASSOCIATION



DIABELLI ARTS AND EDUCATIONAL FOUNDATION



LIFE CHANCE ASSOCIATION HELPING AUTISTS

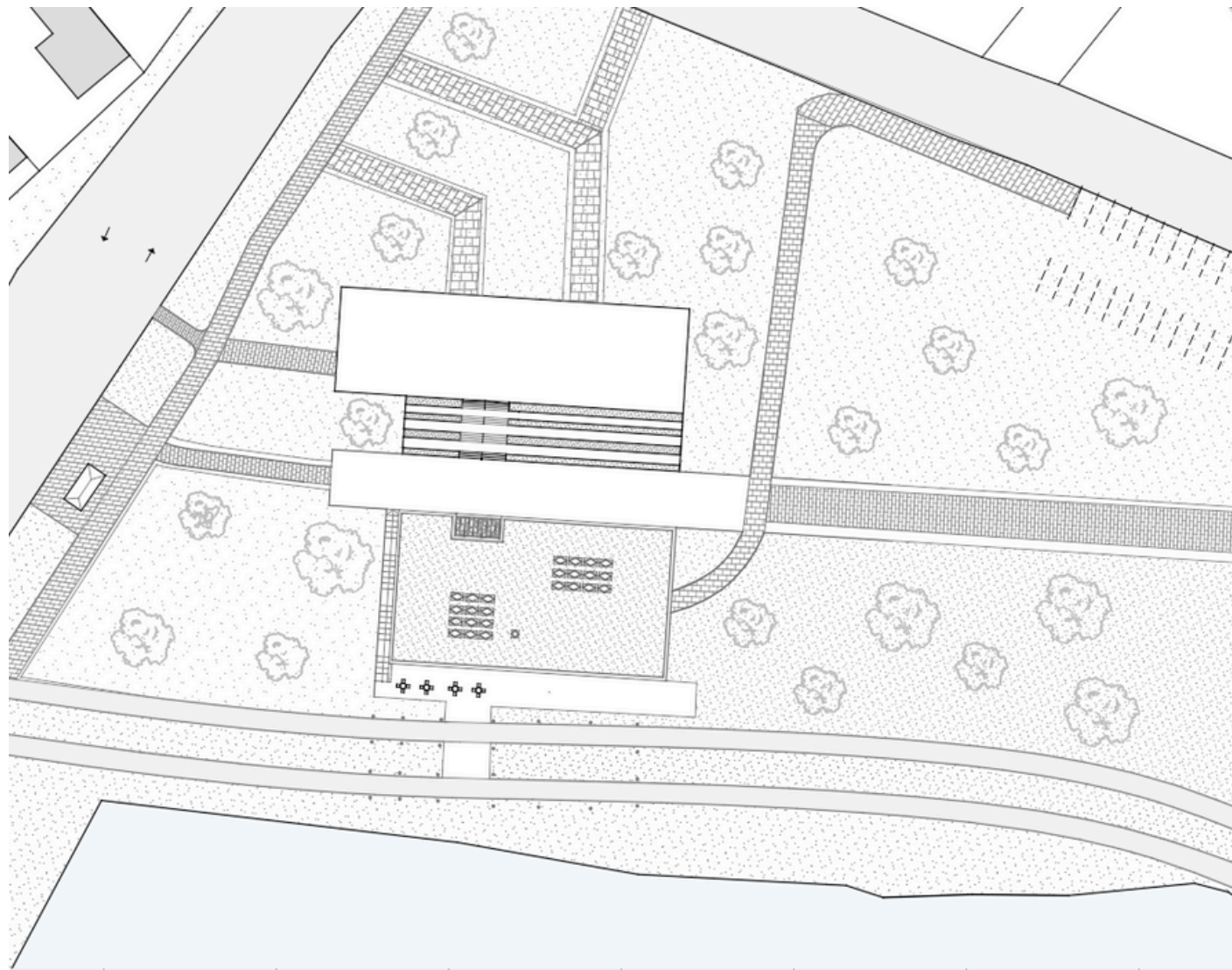


Kozarmisleny Cultural Center and Library



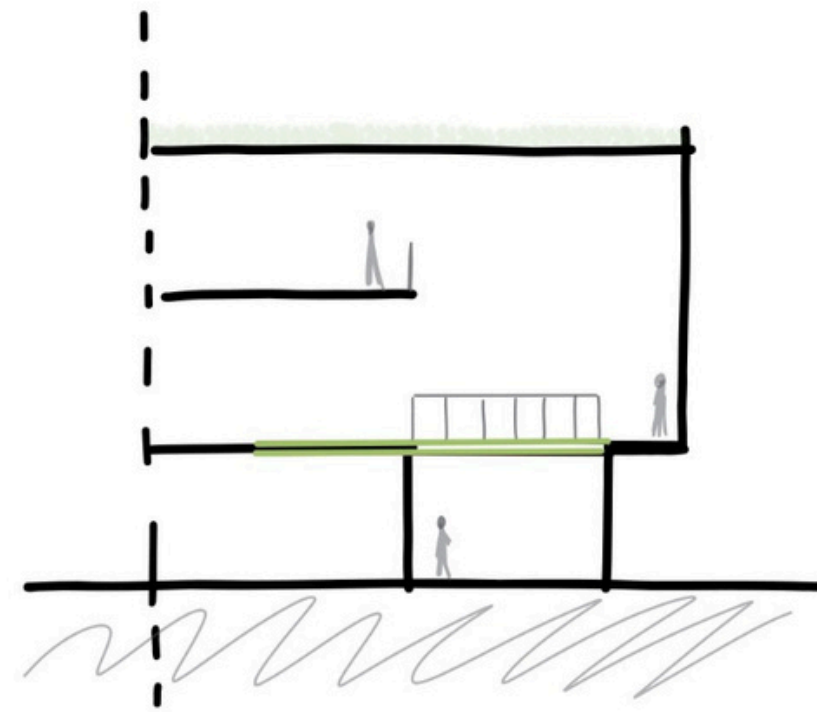
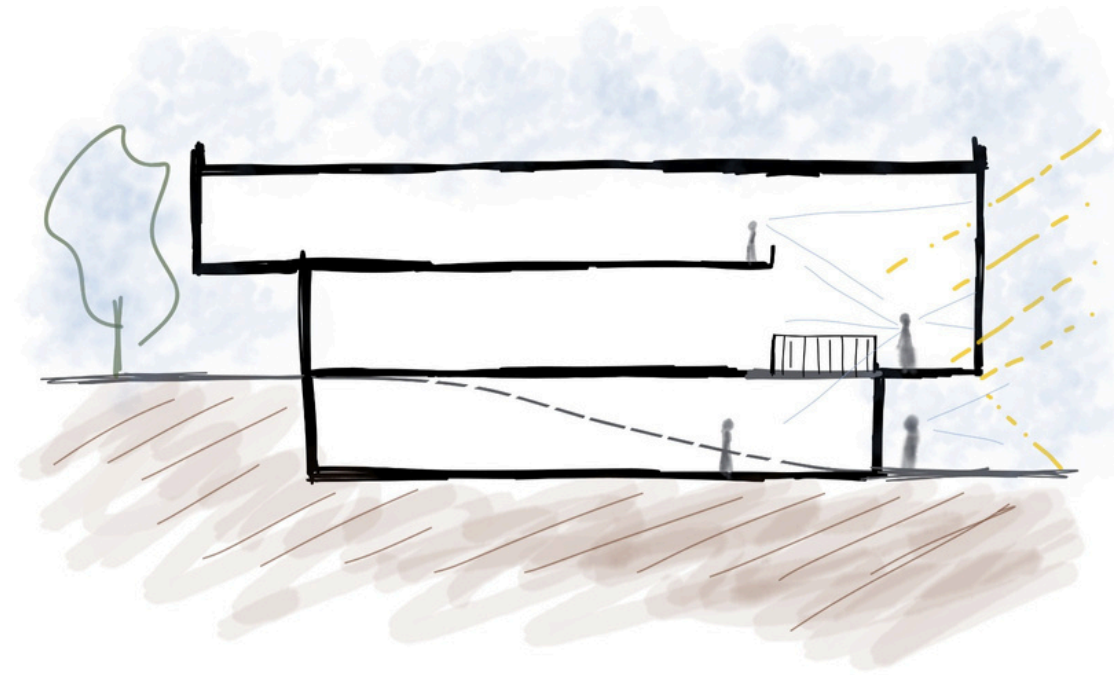
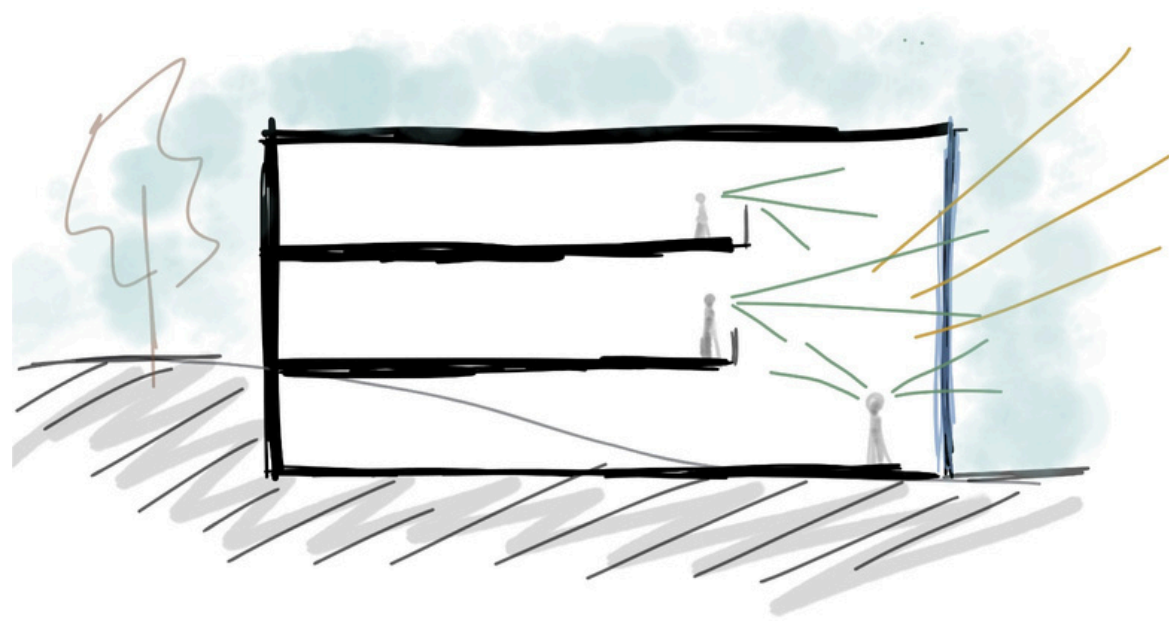
Why this location on the site?

- Accessibility.
- Maximizing the lake view.
- Minimizing nature disturbance on both , the vegetation and the topography of the site.

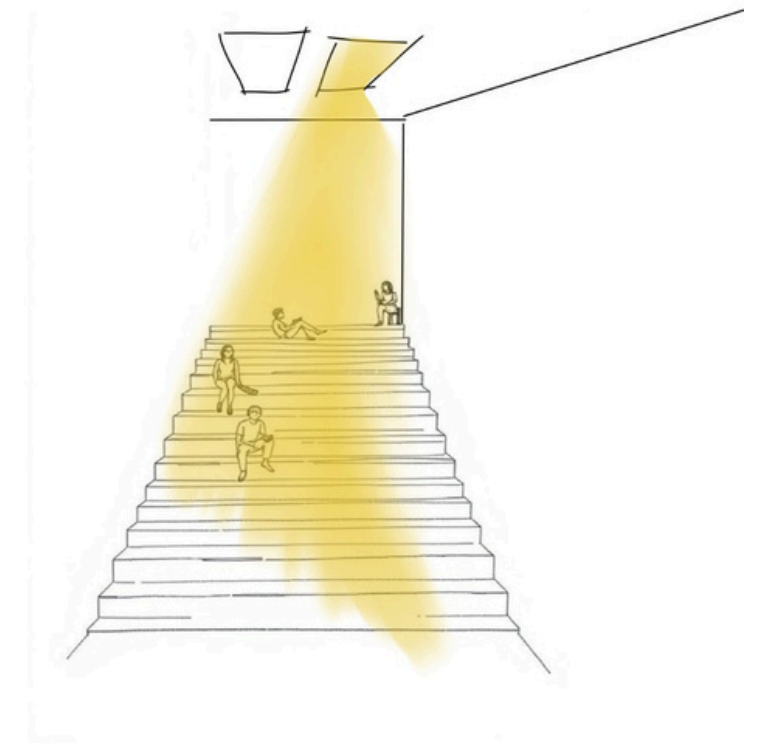
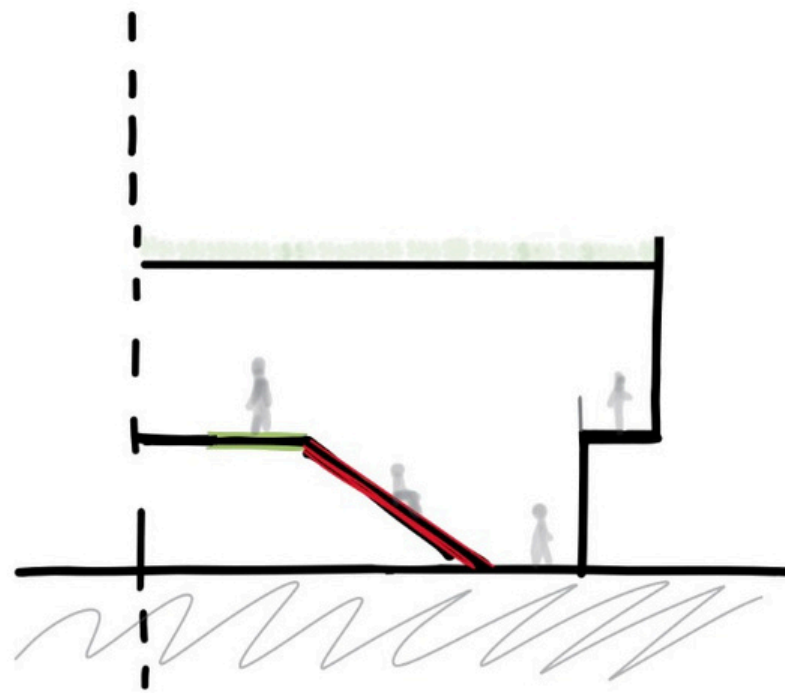
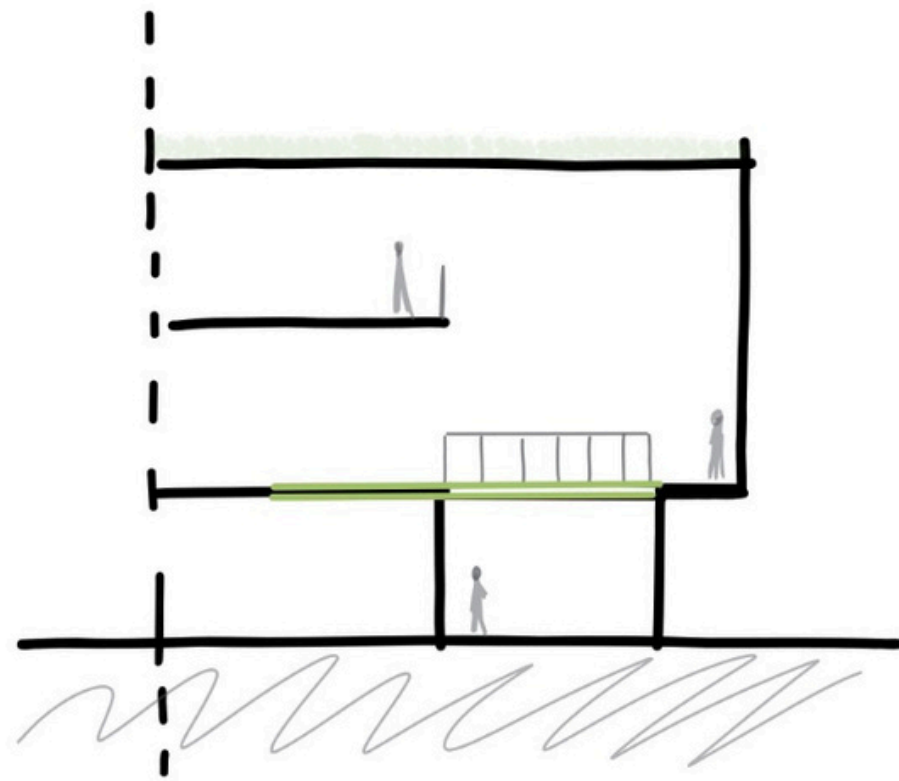


The current location of the cultural center and library:

From site reading to concept development

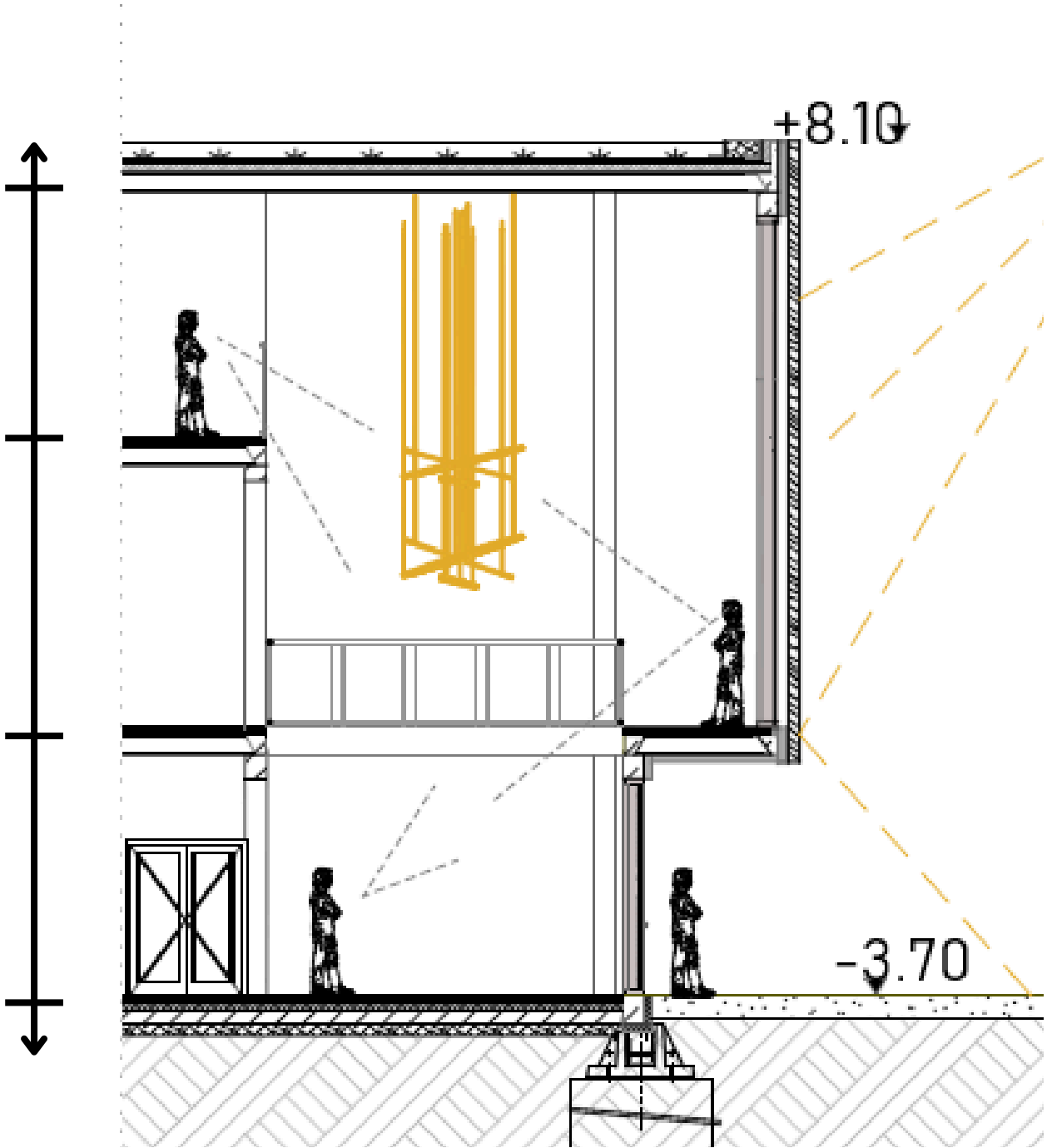


Limitations of Initial Conceptual Base

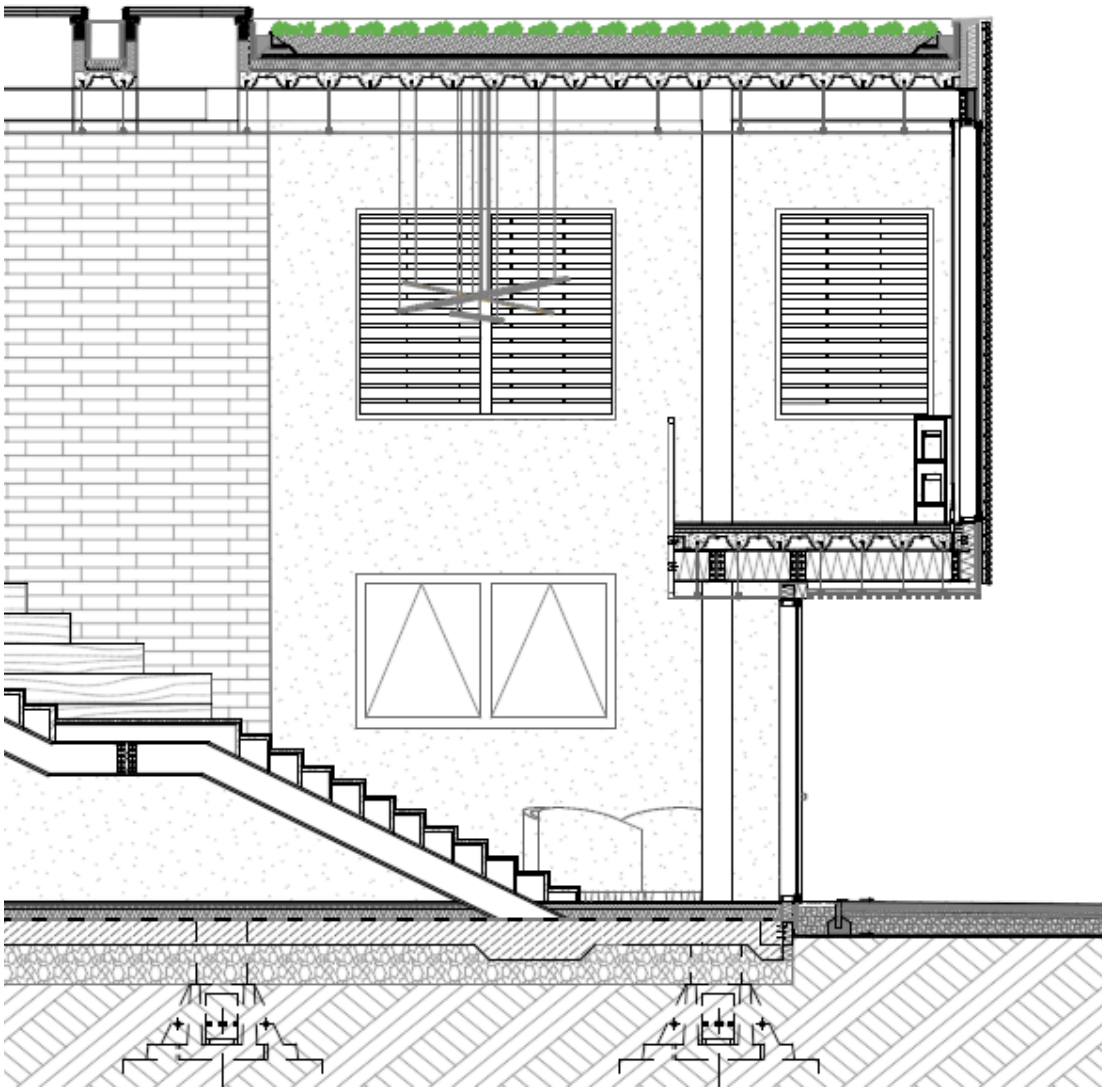


Maintained Concept,

Visual connection through interior volumes and exterior surroundings as well.

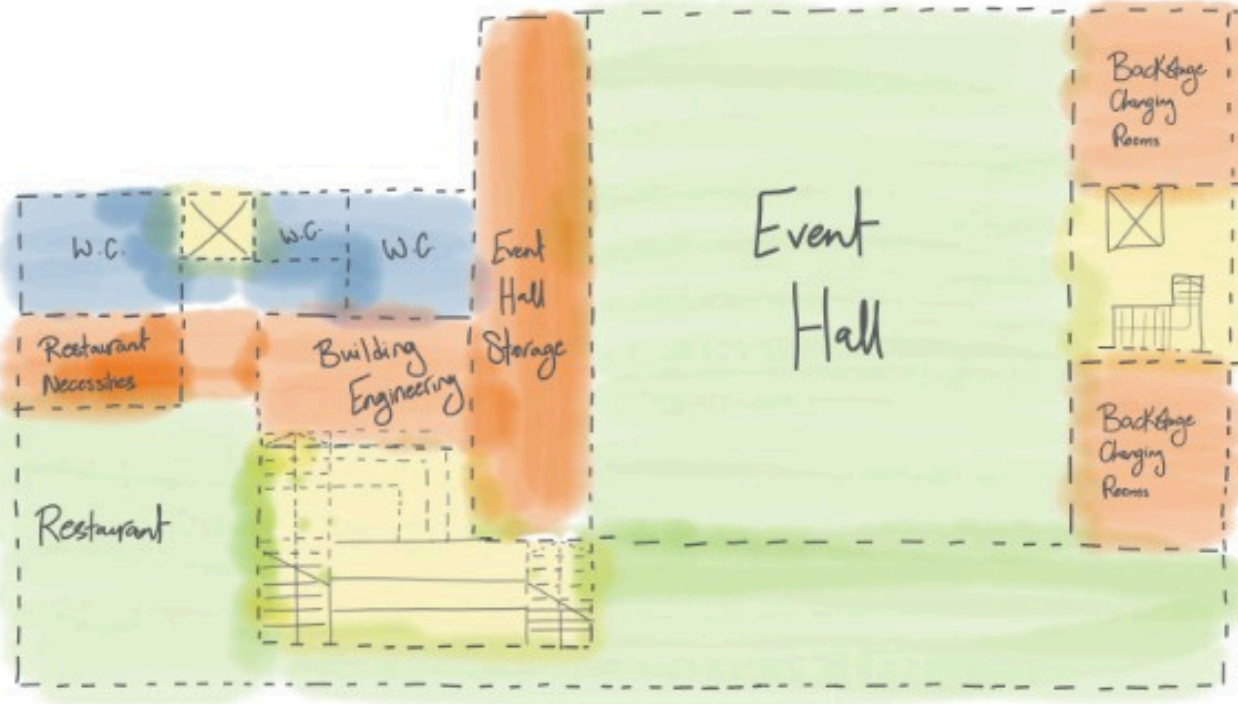
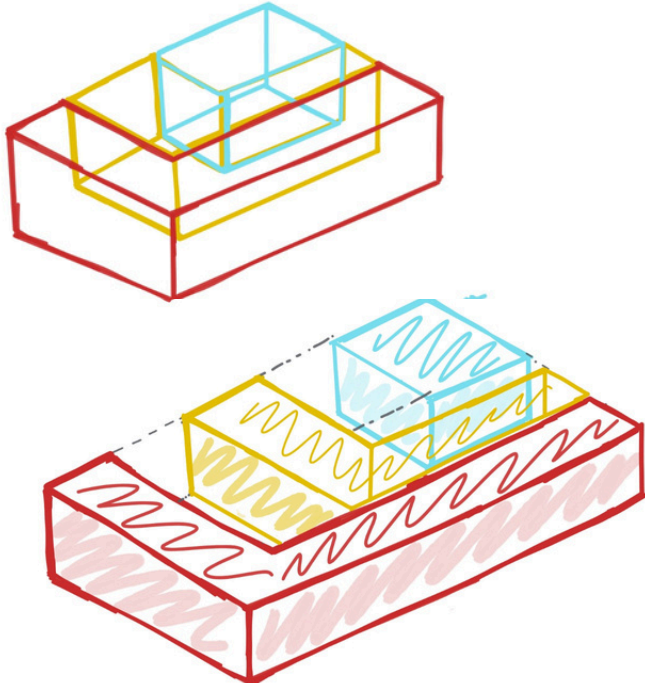


Previous section



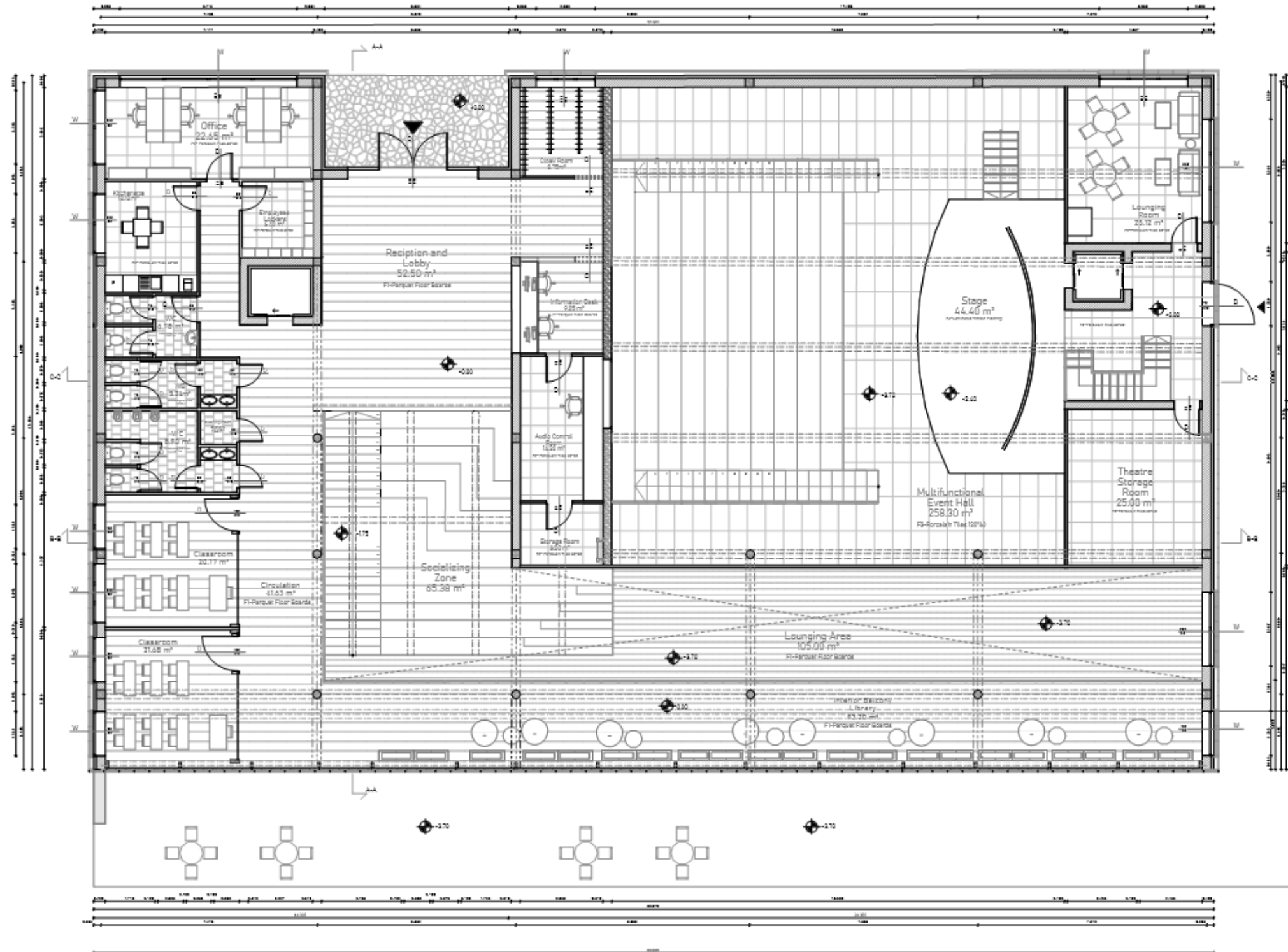
Current section

Circulation, Zoning and Massing



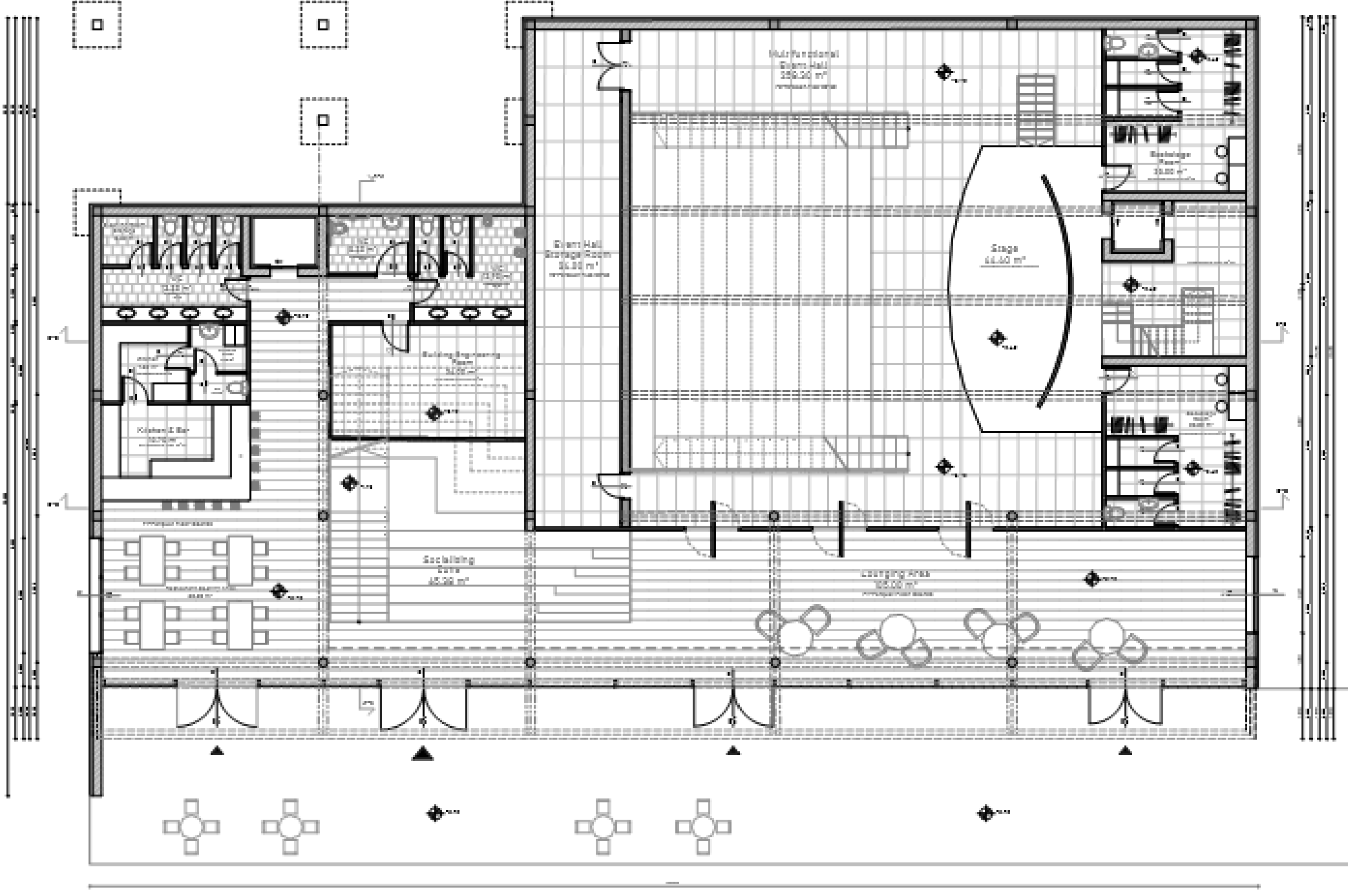
Ground Floor Plan ,

Circulation study and zoning.

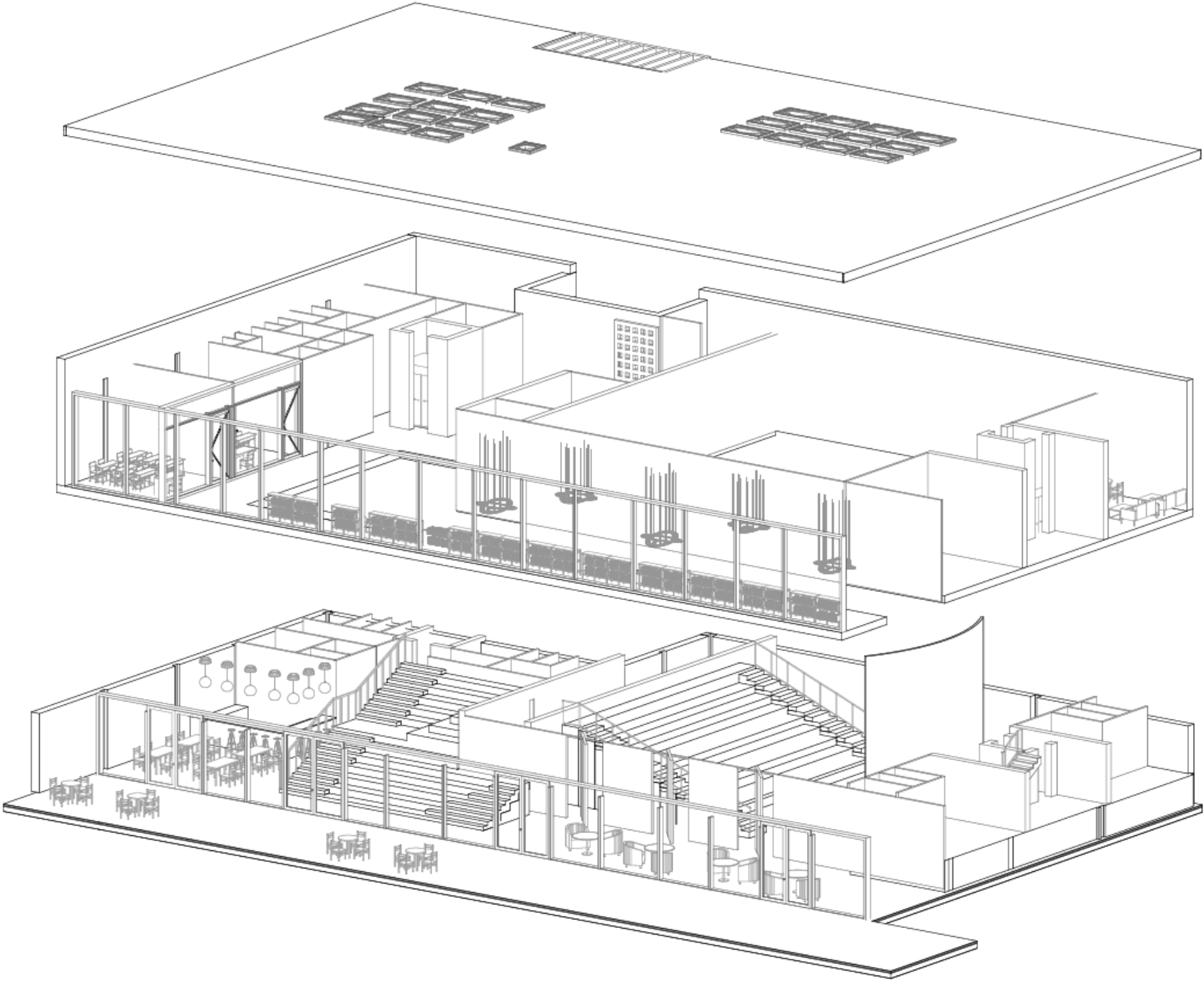


Underground Floor Plan ,

Circulation study and zoning.

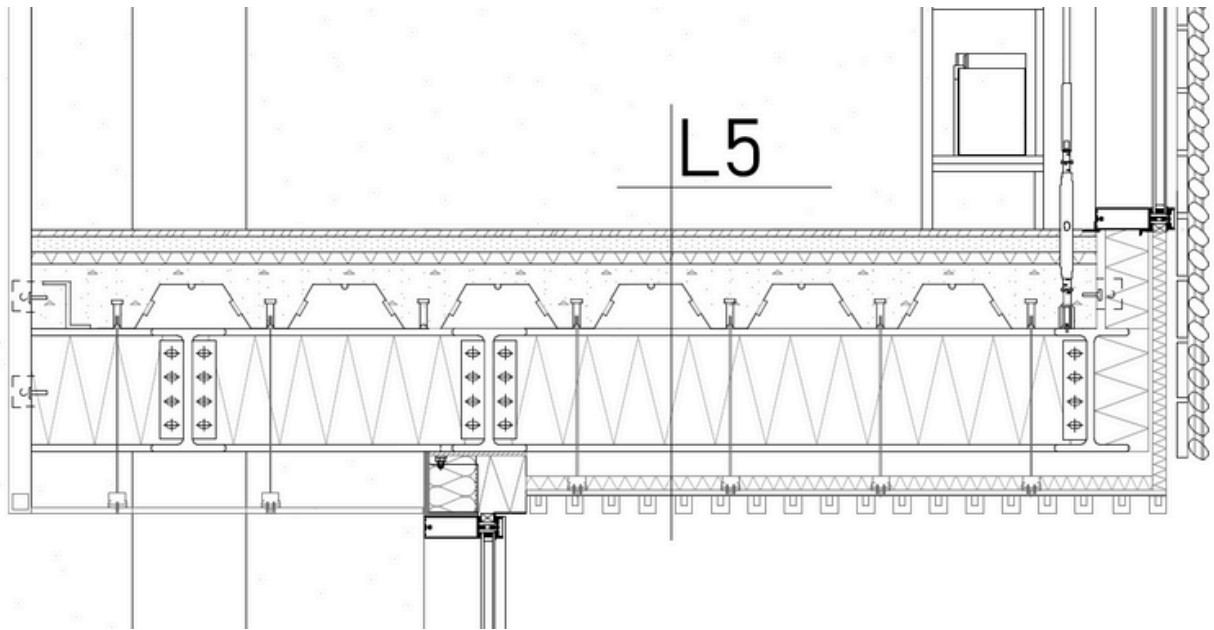
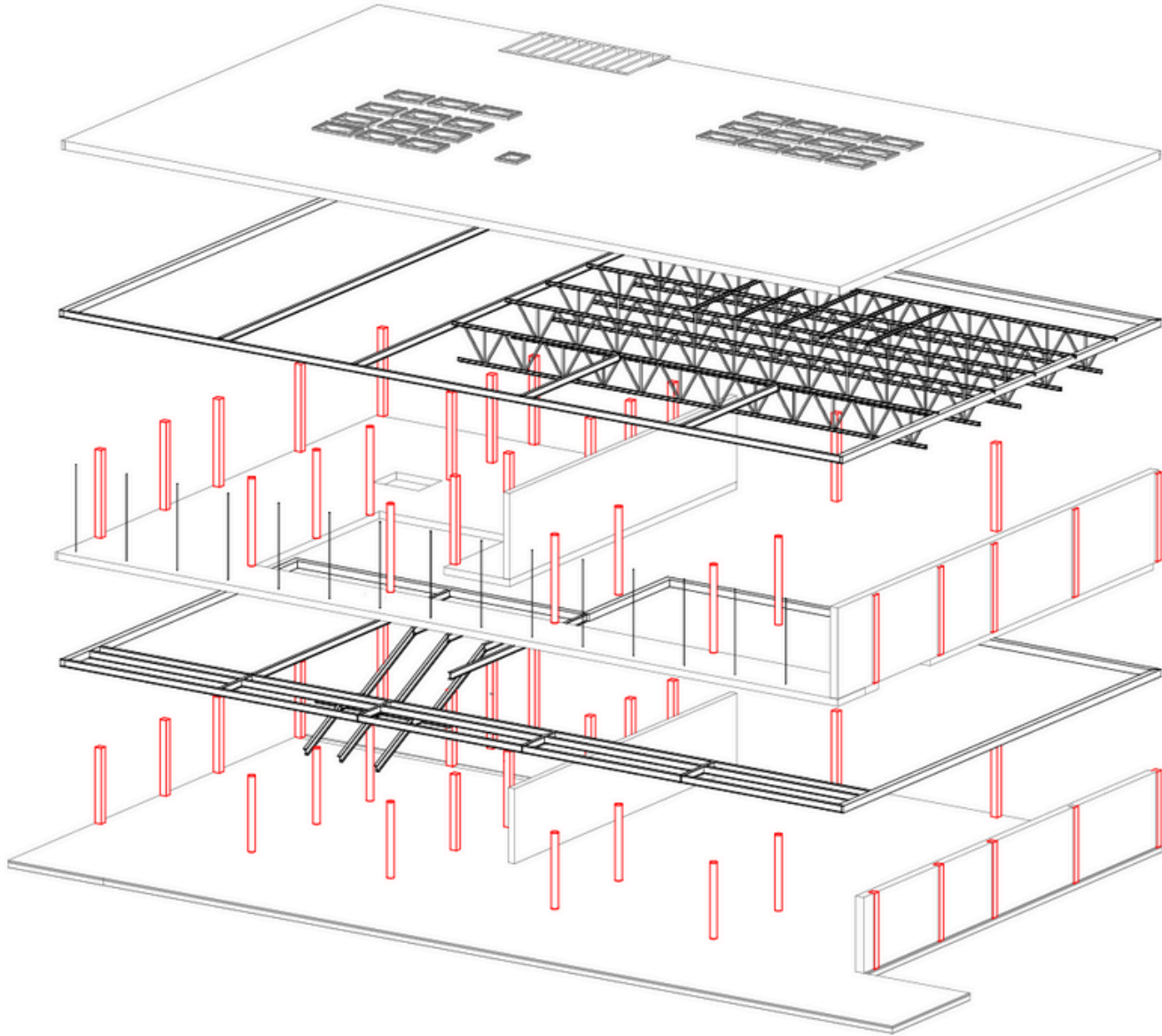
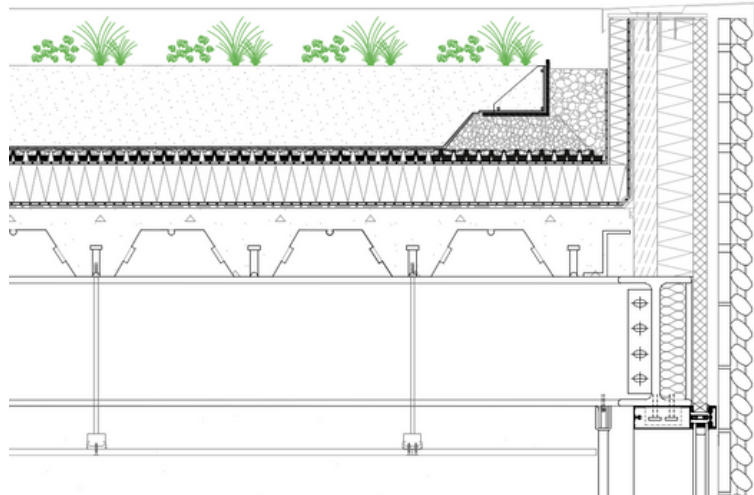


Axonometric View Emphasizing Massing



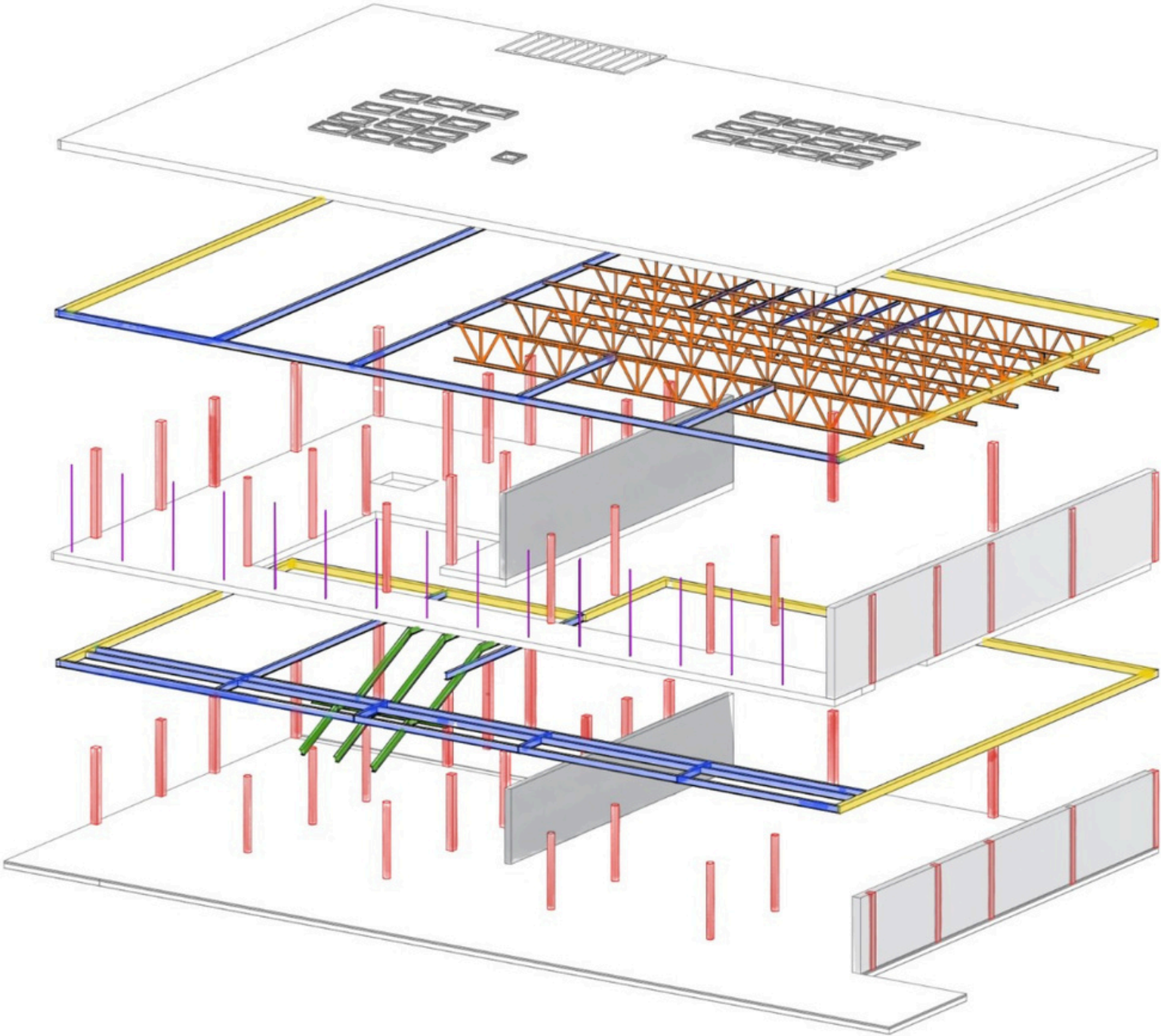
38.000

The Structural Delima



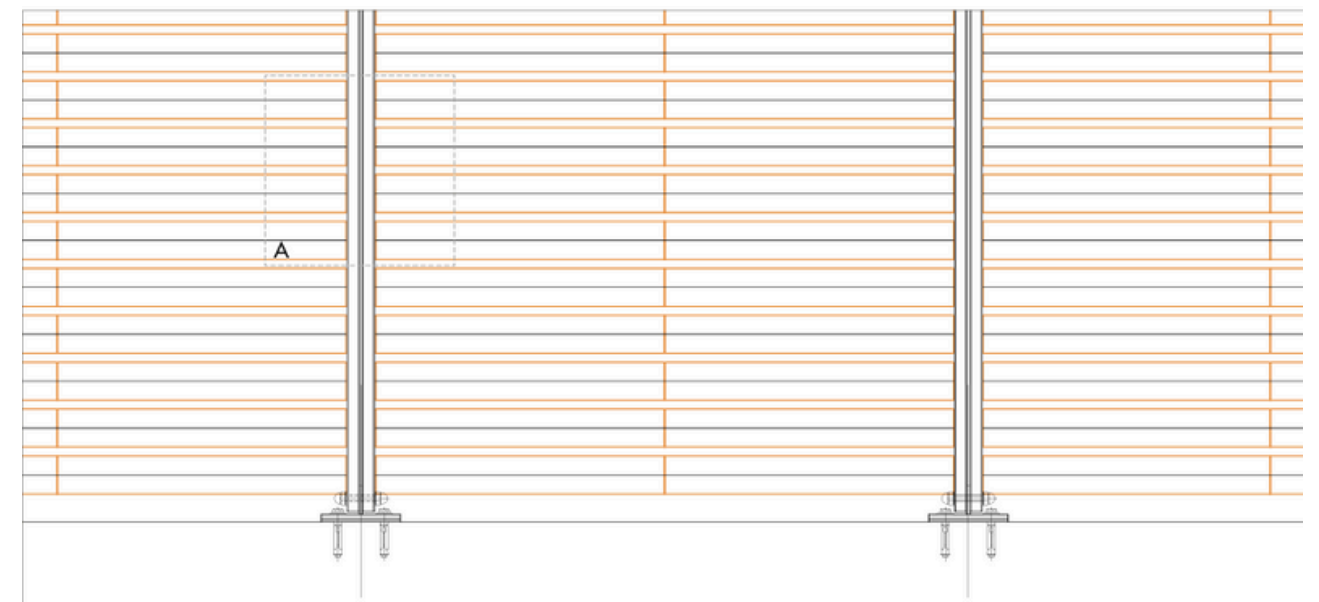
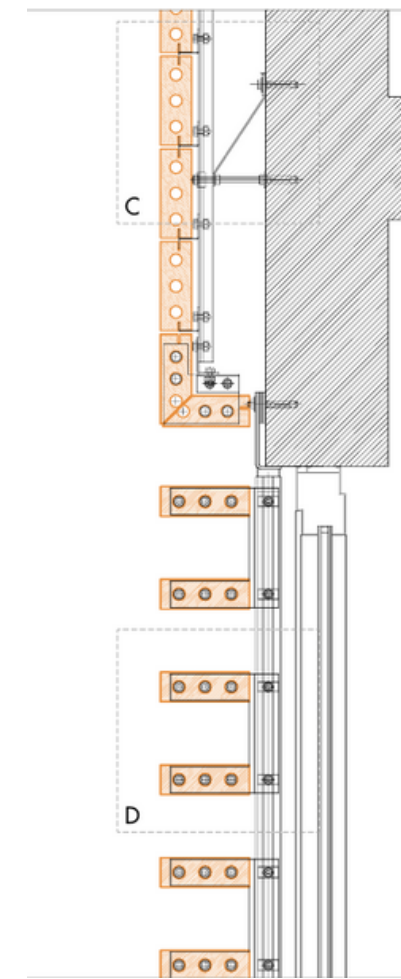
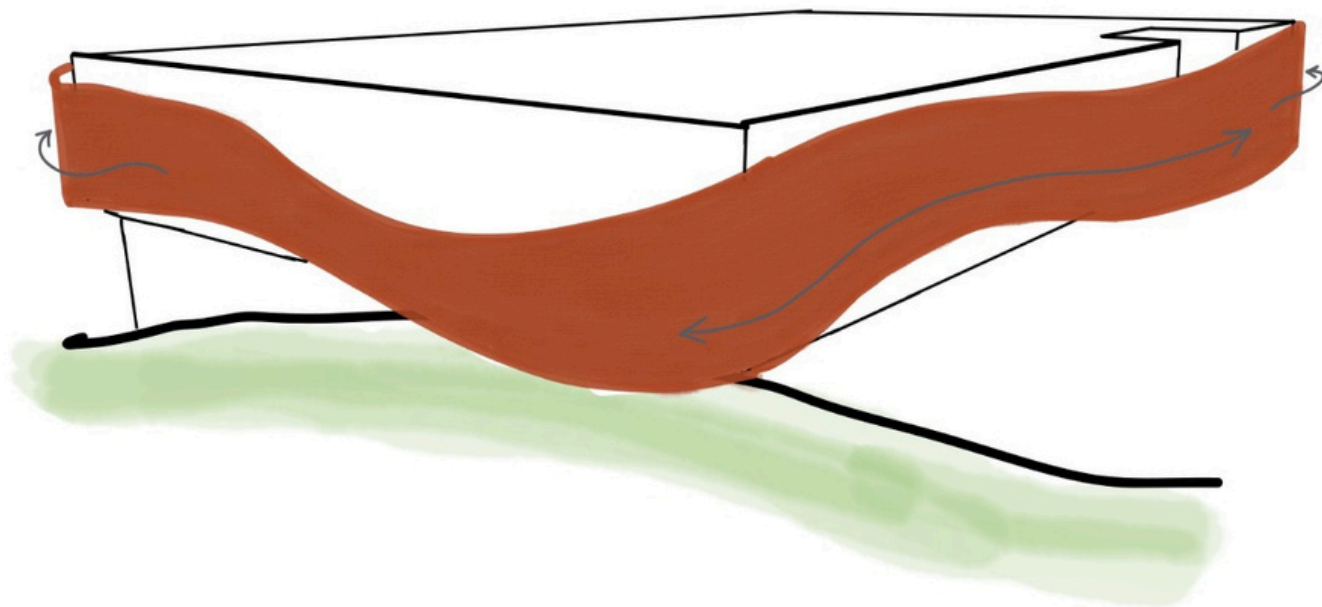
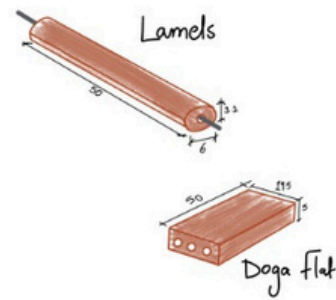
The Structural Delima

- Columns.
- I beams
- Ring beams.
- RFC wall.
- Steel cables.
- Steel I beam staircase structure.
- Steel Truss.
- Loadbearing exterior wall.



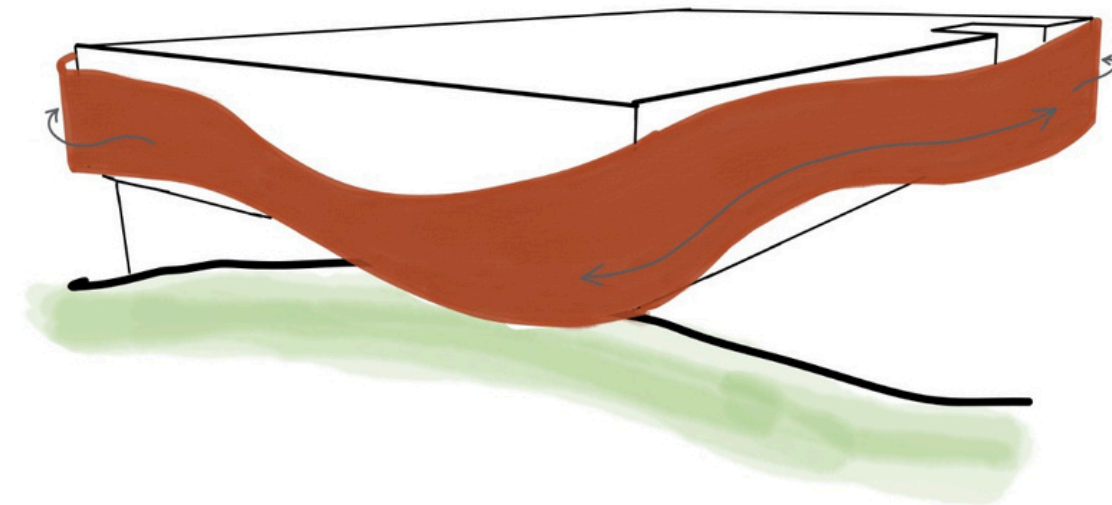
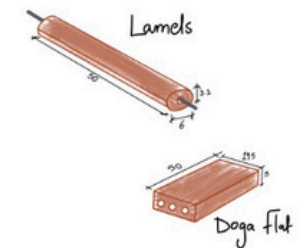
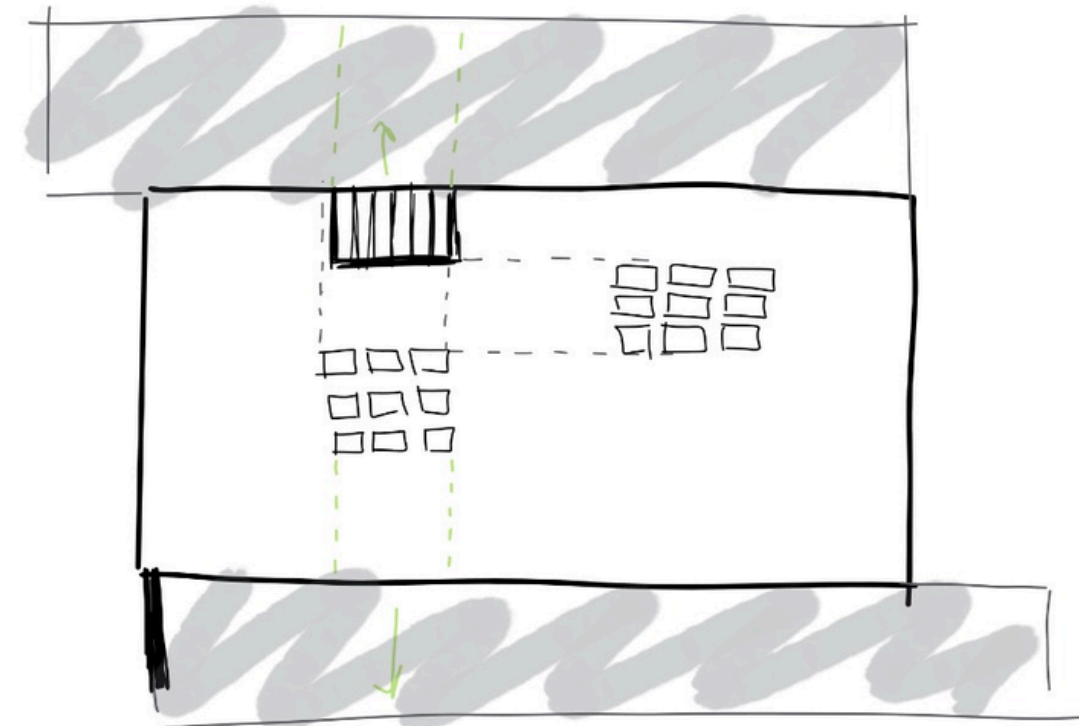
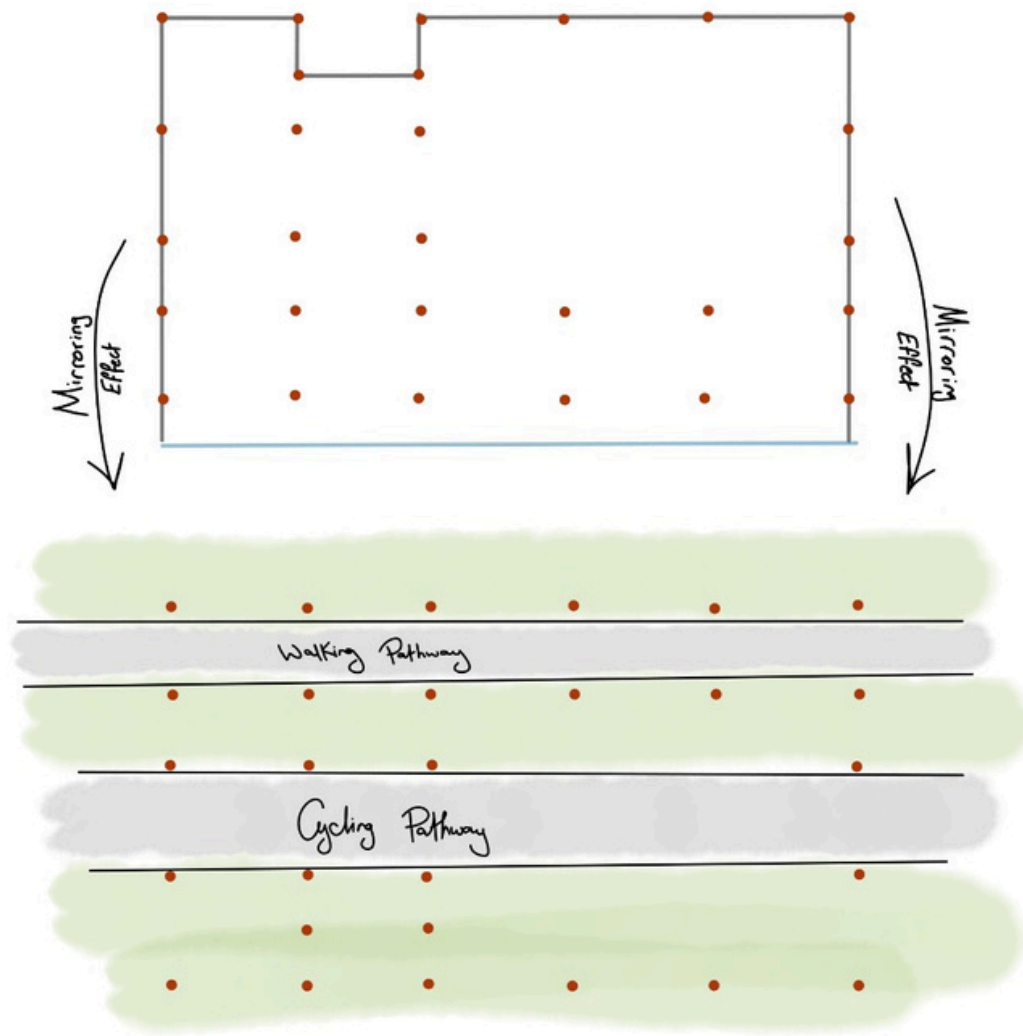
Decision For Prominent Materials

- Doga - Flat ,Ceramic Panels
- Terracotta Ceramic Lamels



Architectural Language of The Building

- Pole Landscape
- Terrace offsets breaking the boxy figure
- Element of surprise
- Top view alignment
- Ceramic-brick-rusty steel visuality



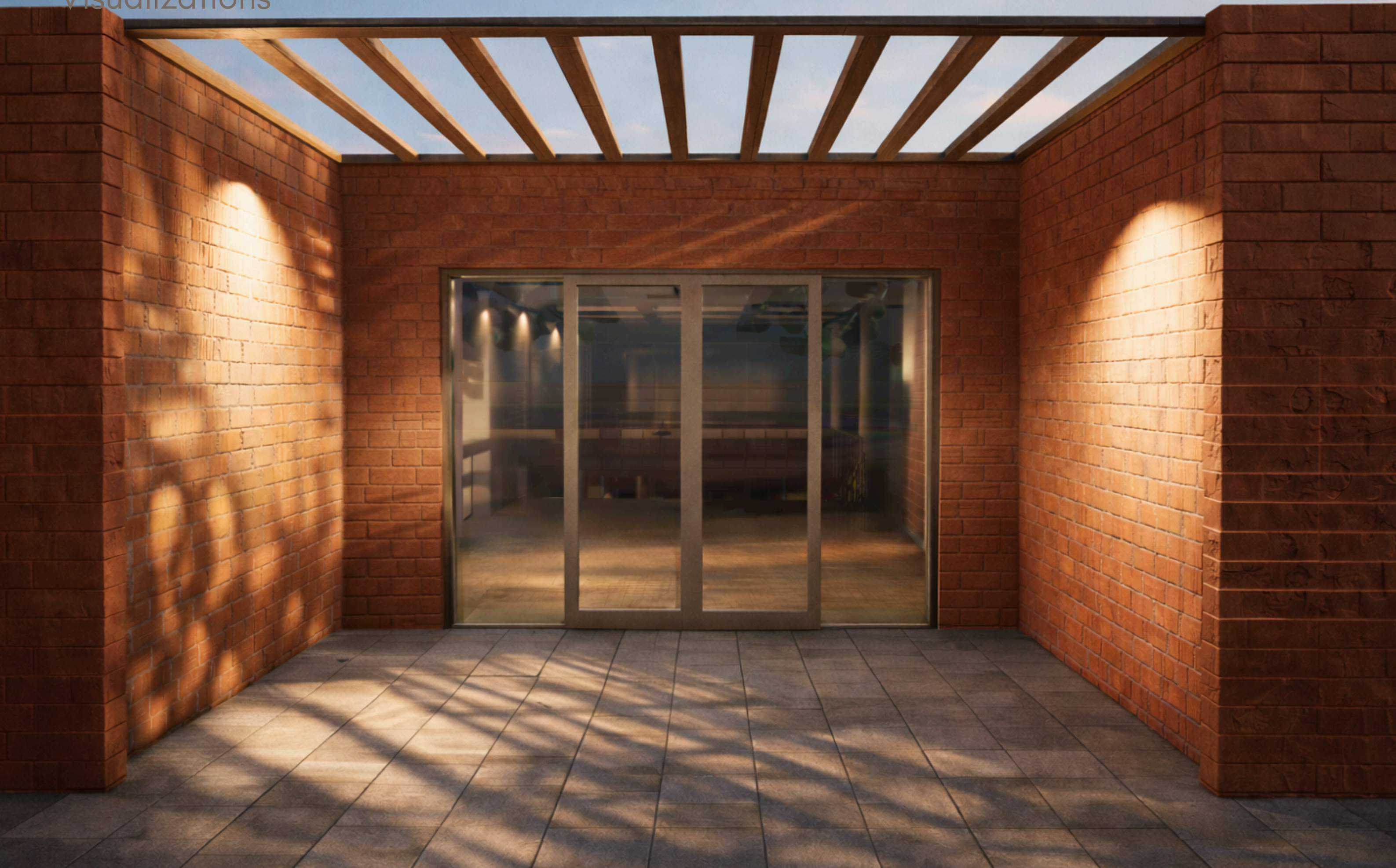
Visualizations



Visualizations



Visualizations



Visualizations

