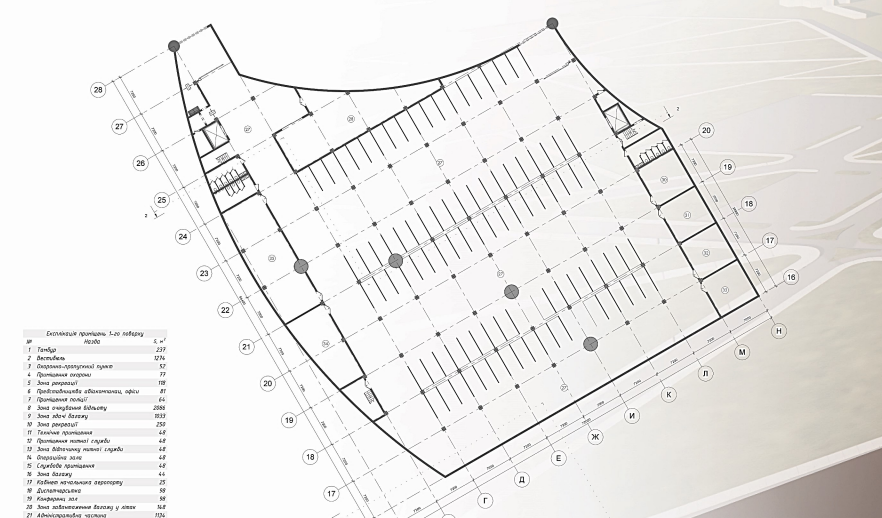
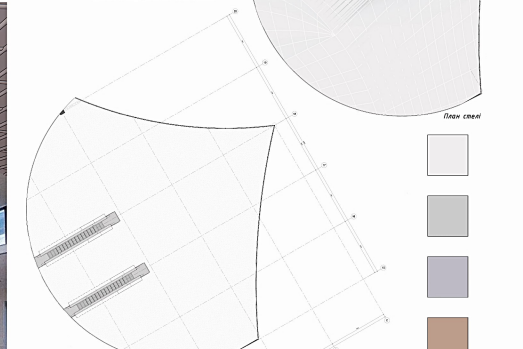
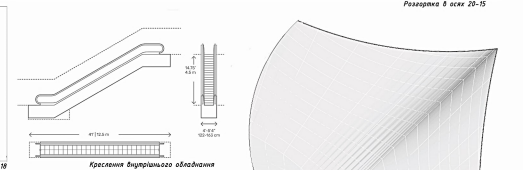
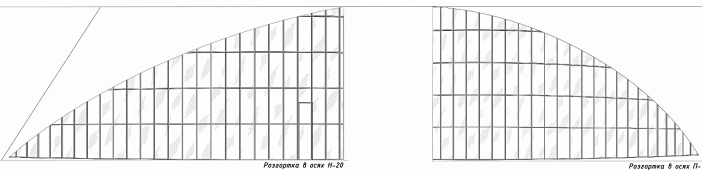
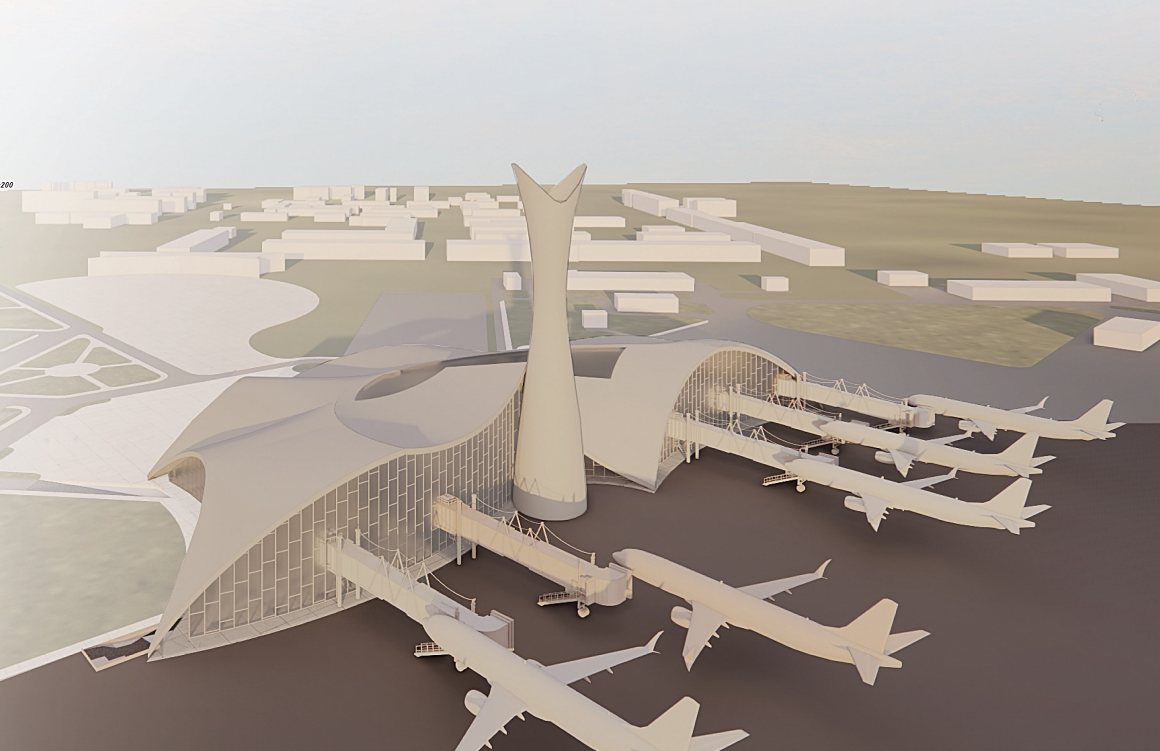
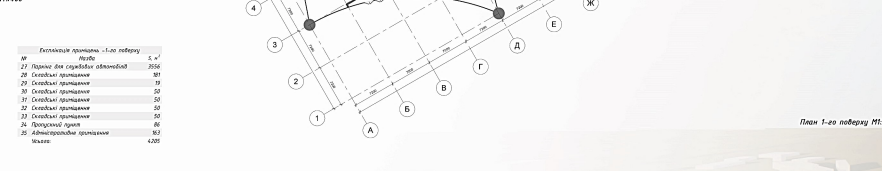
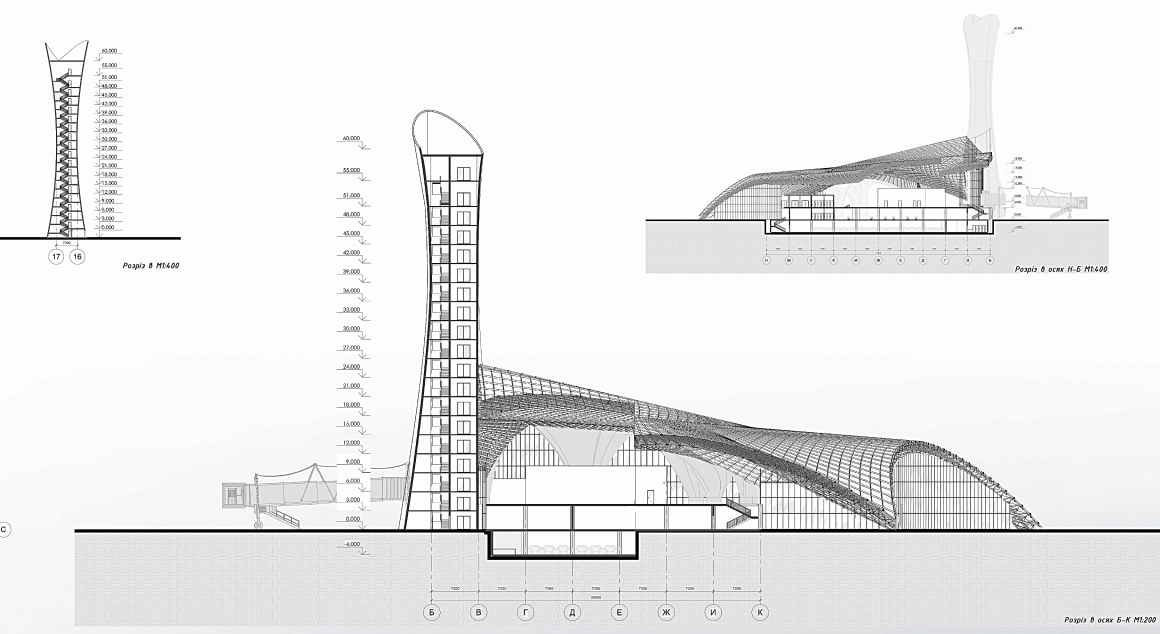
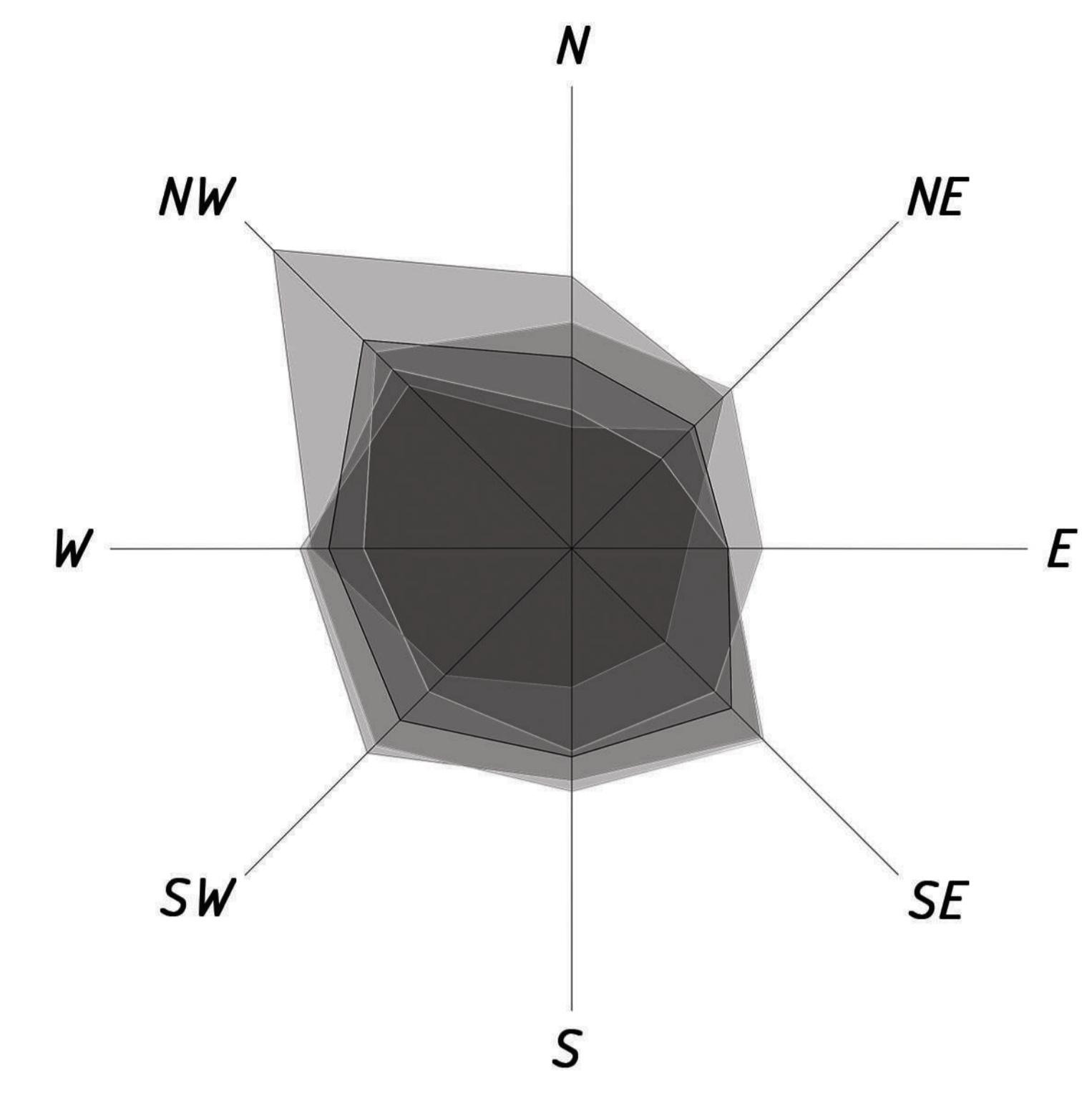


Methods and techniques for the formation of the architectural environment of airport terminals (on the example of the Antonov International Airport in Hostomel)




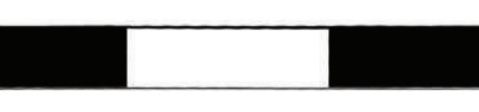





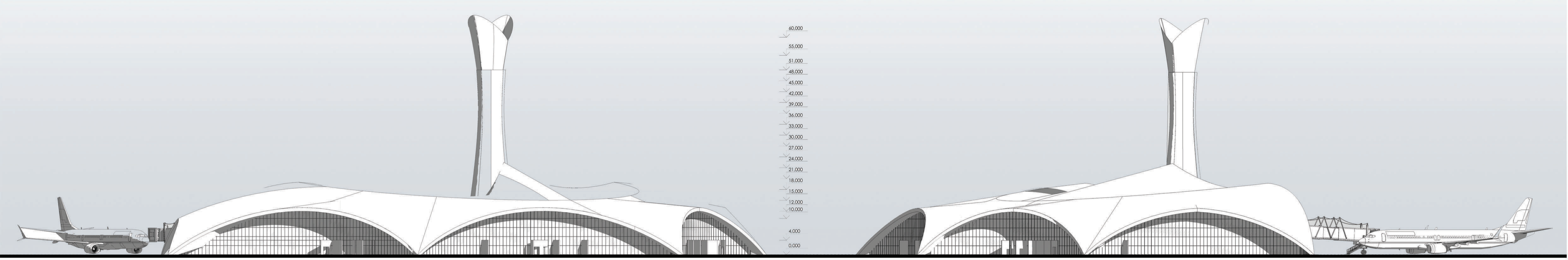
*master plan explication*

- 1** - hangar aircraft "Mriya"
- 2** - technical blocks
- 3** - heating plant
- 4** - Train Station
- 5** - technical blocks

-  - checkpoints
-  - landscaping
-  - pedestrian zone
-  - asphalt road

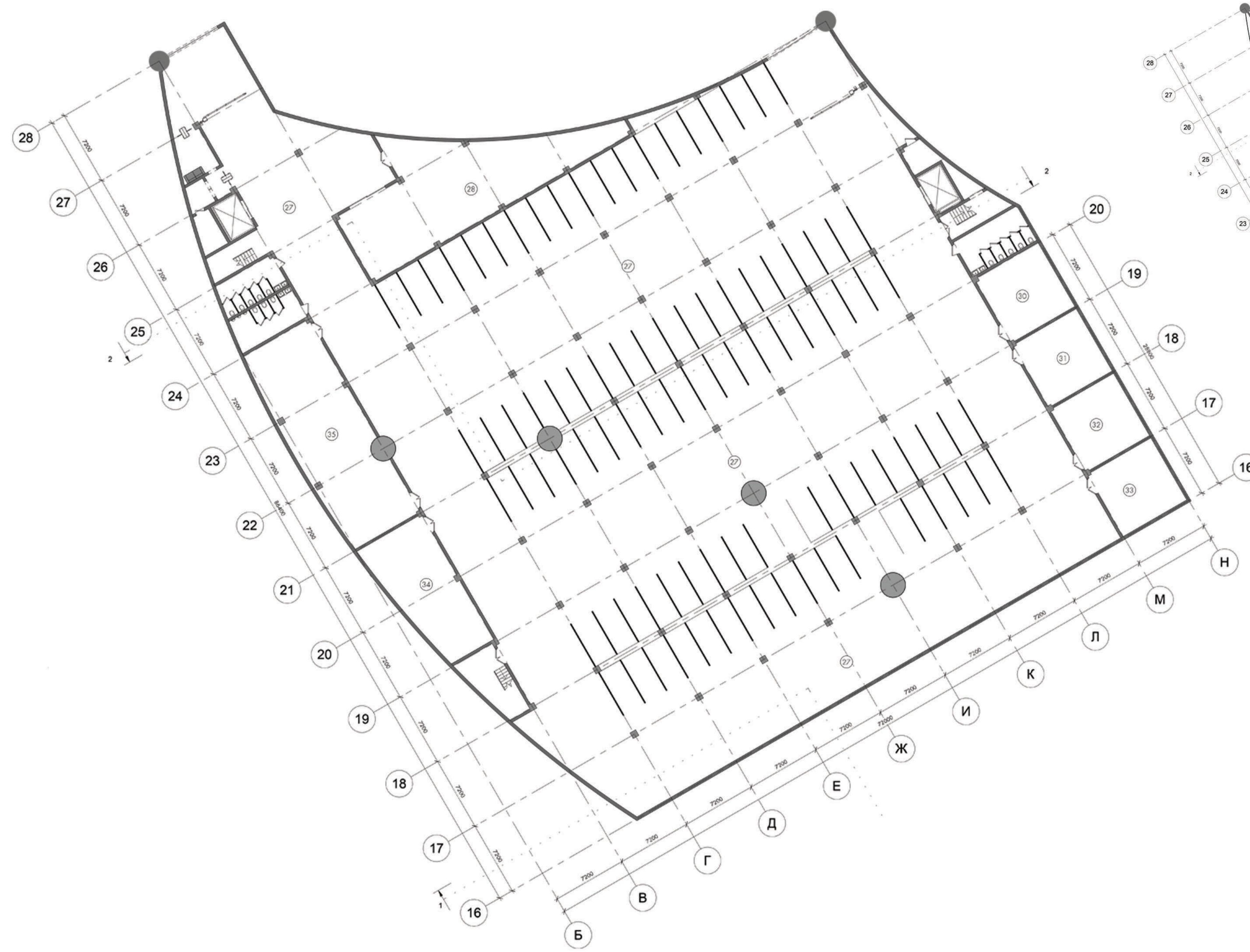
-  - green spaces
-  - railway
-  - airfield boundary

-  - airport terminal

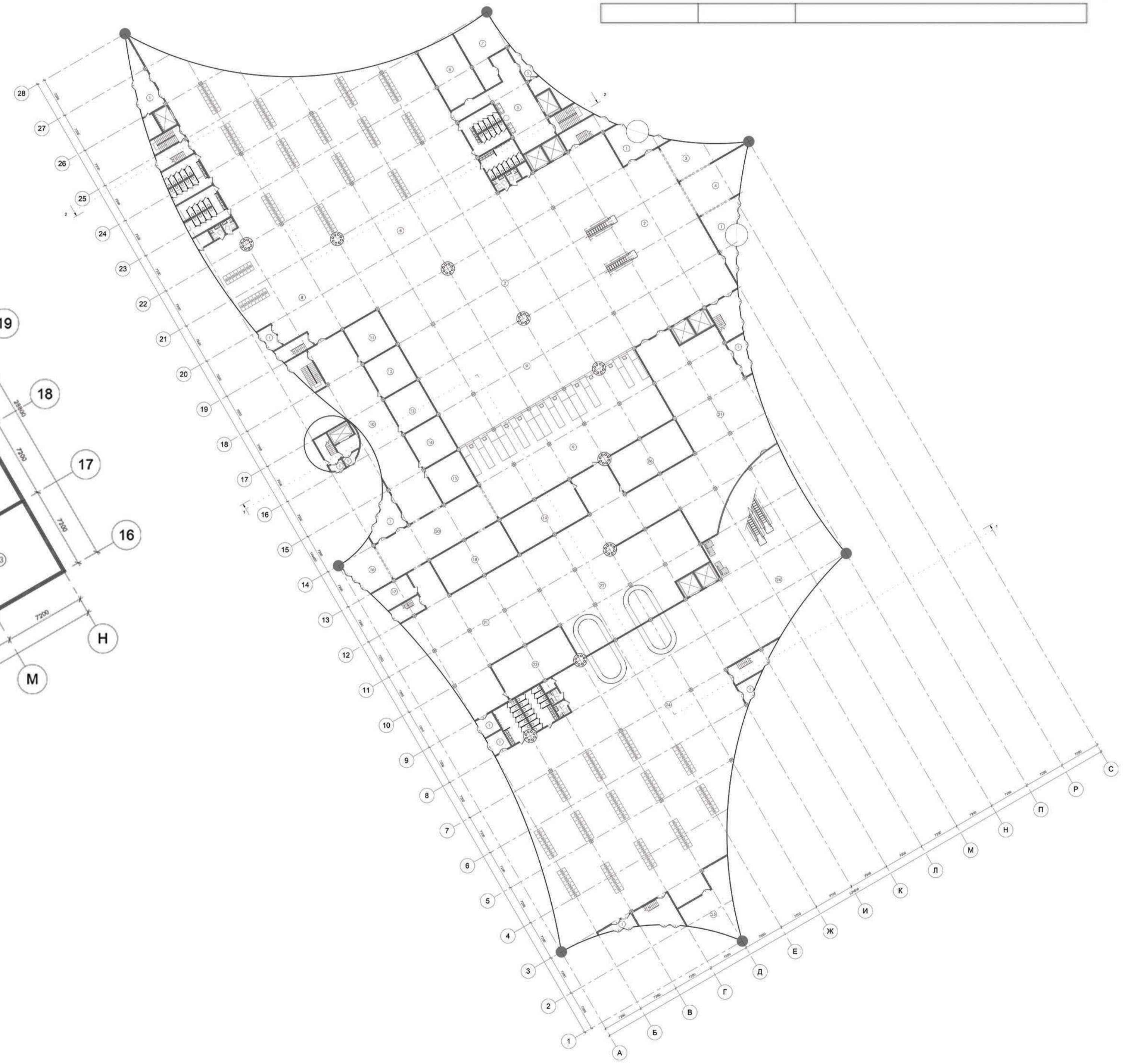


*East facade*

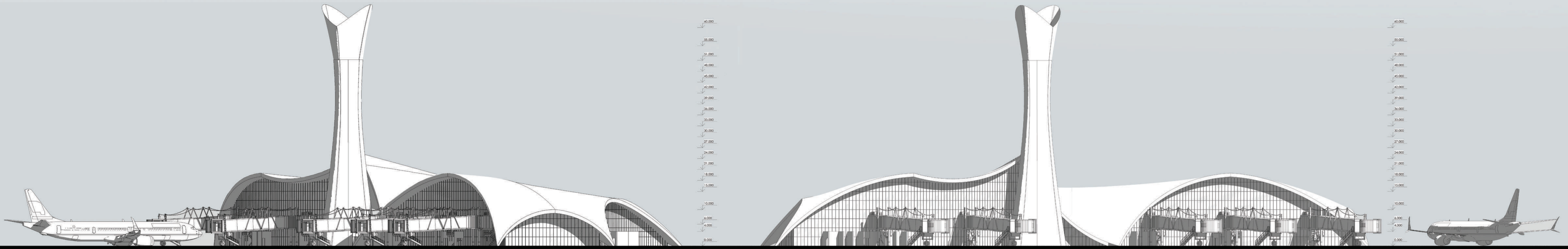
*North facade*



*Floor Plan at - 4,000*

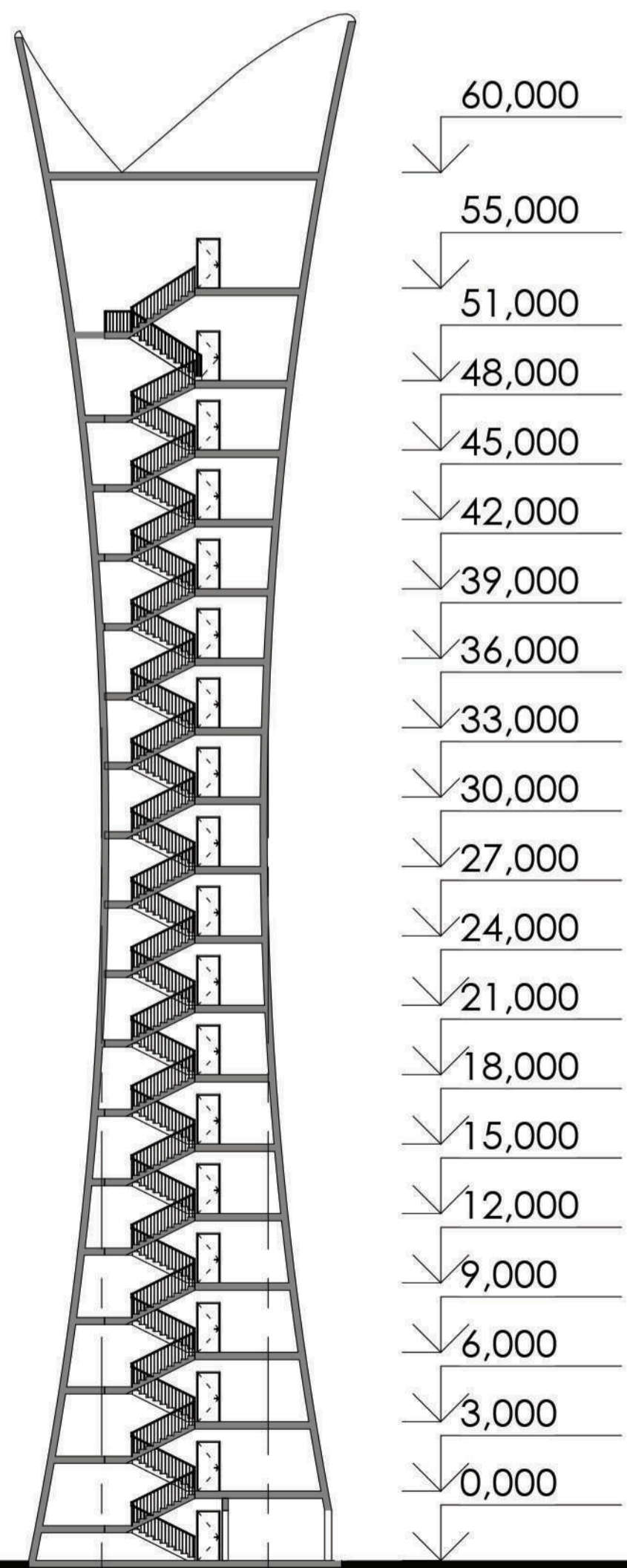


*Floor plan at +0.000*

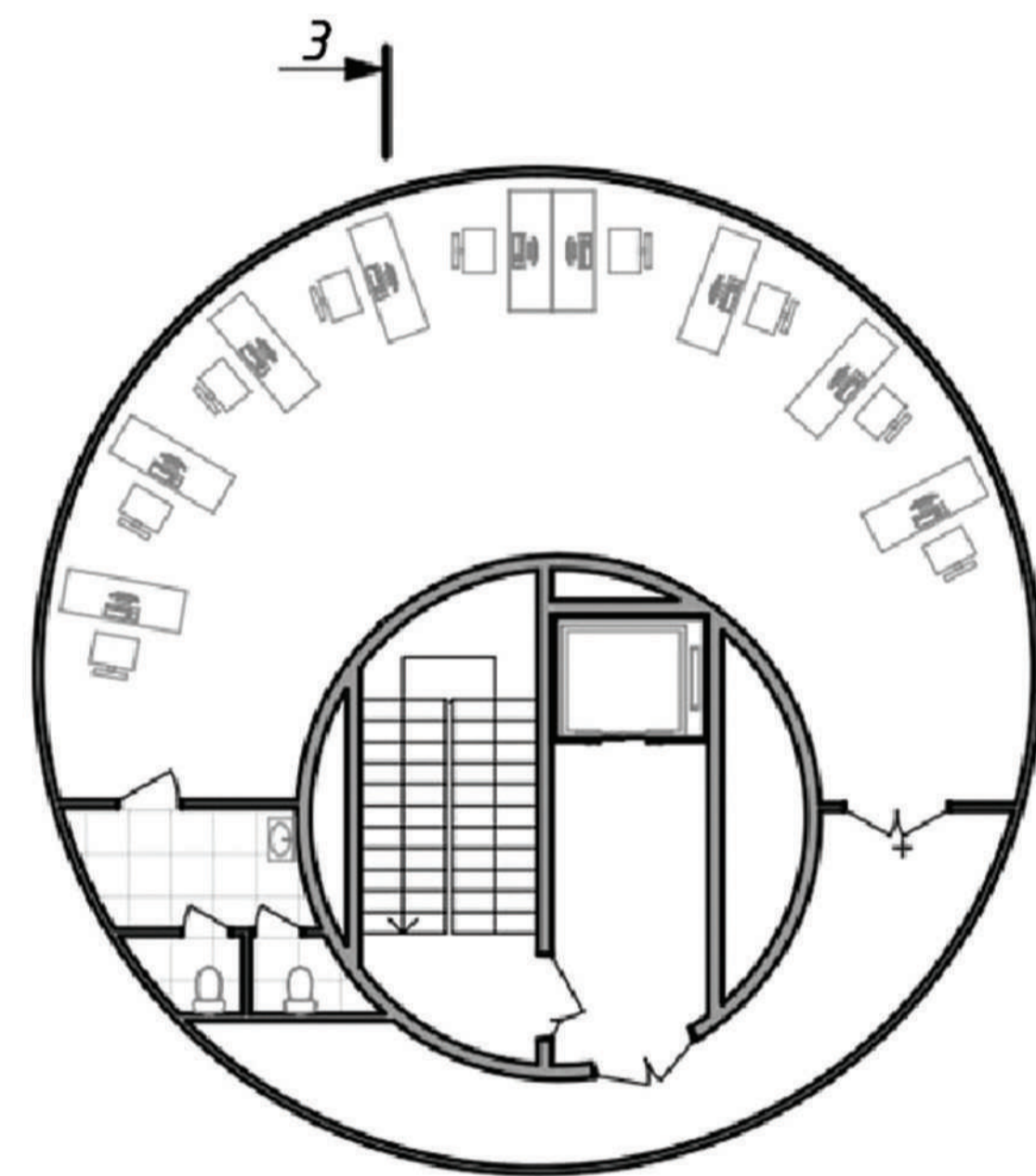


South facade

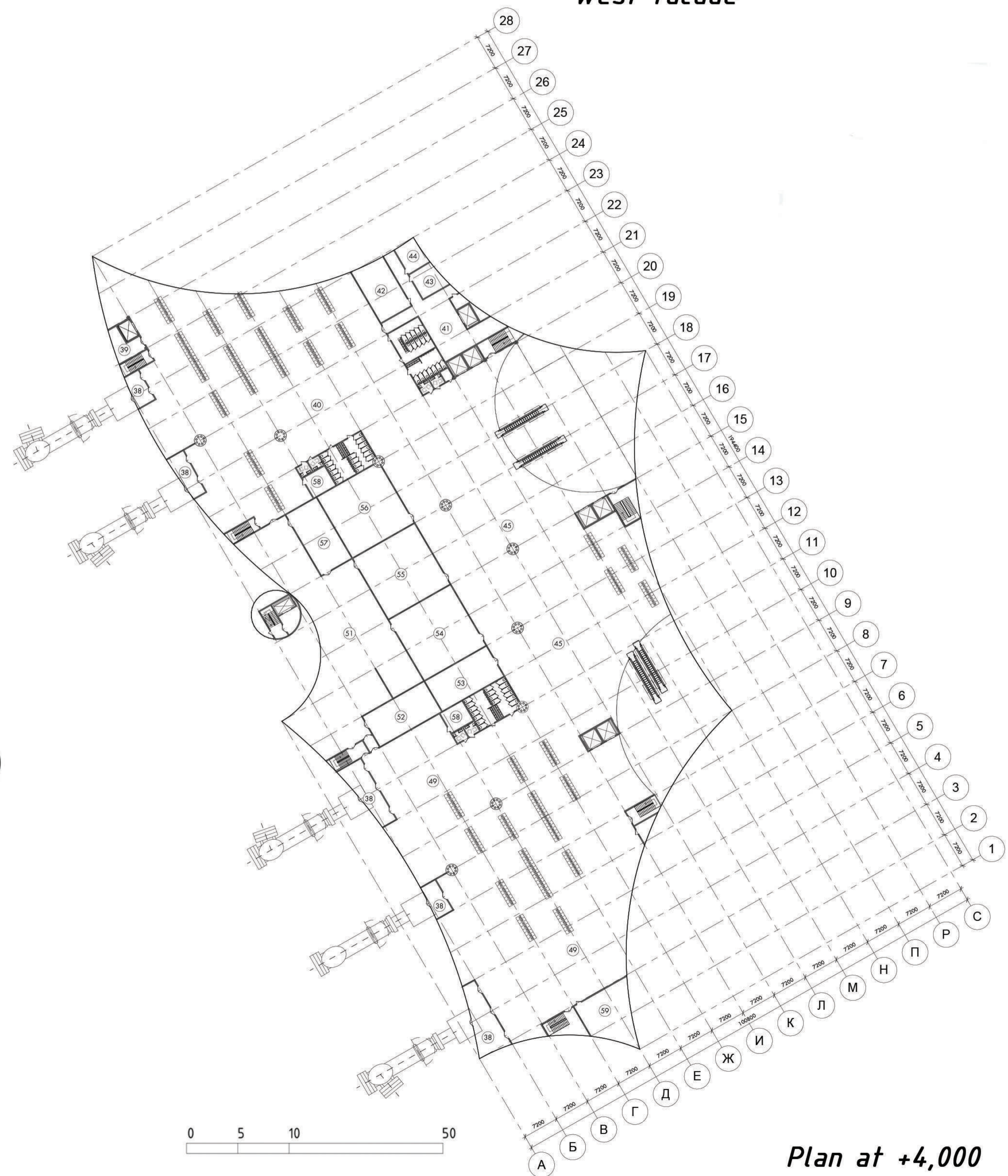
West facade



Section 3-3

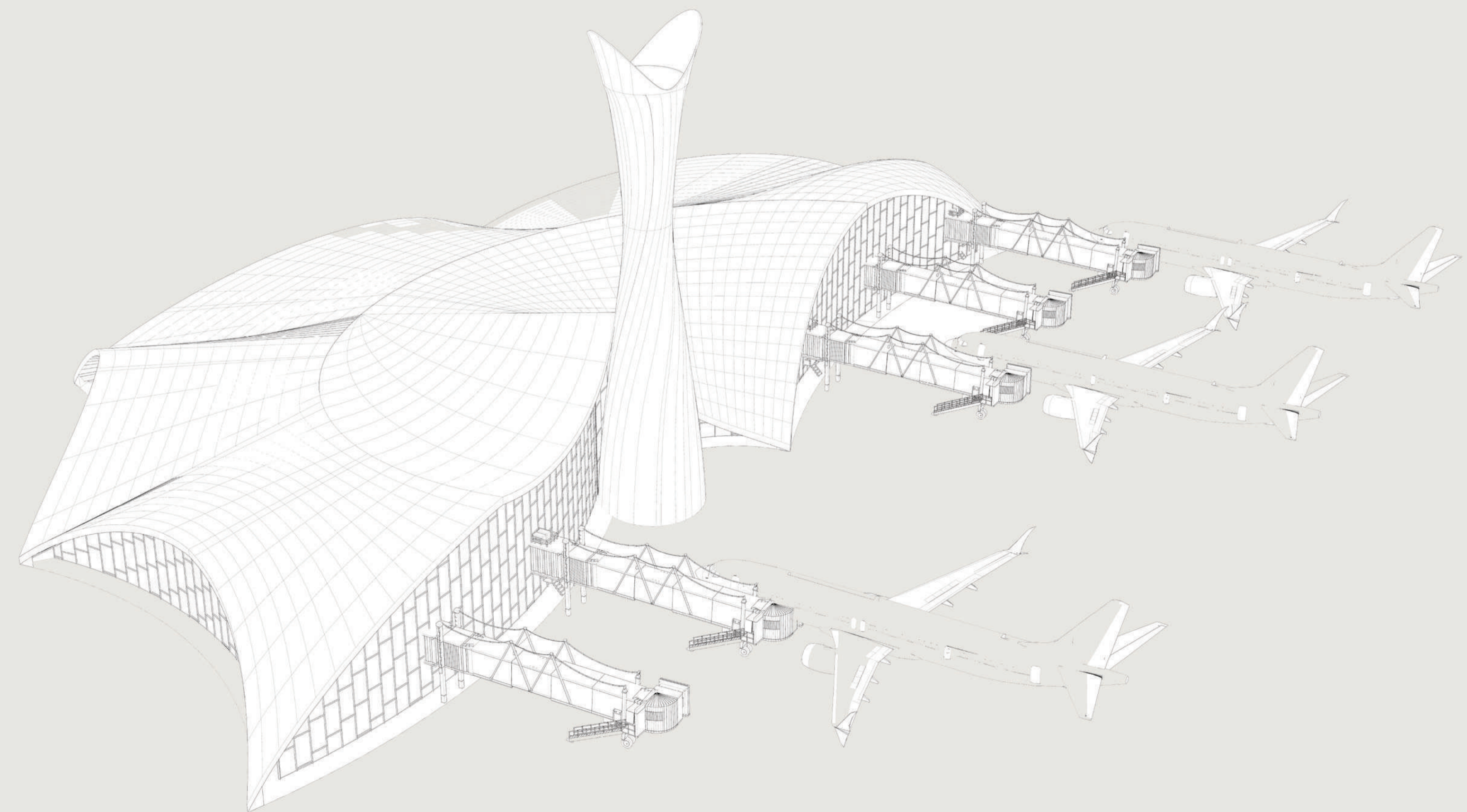
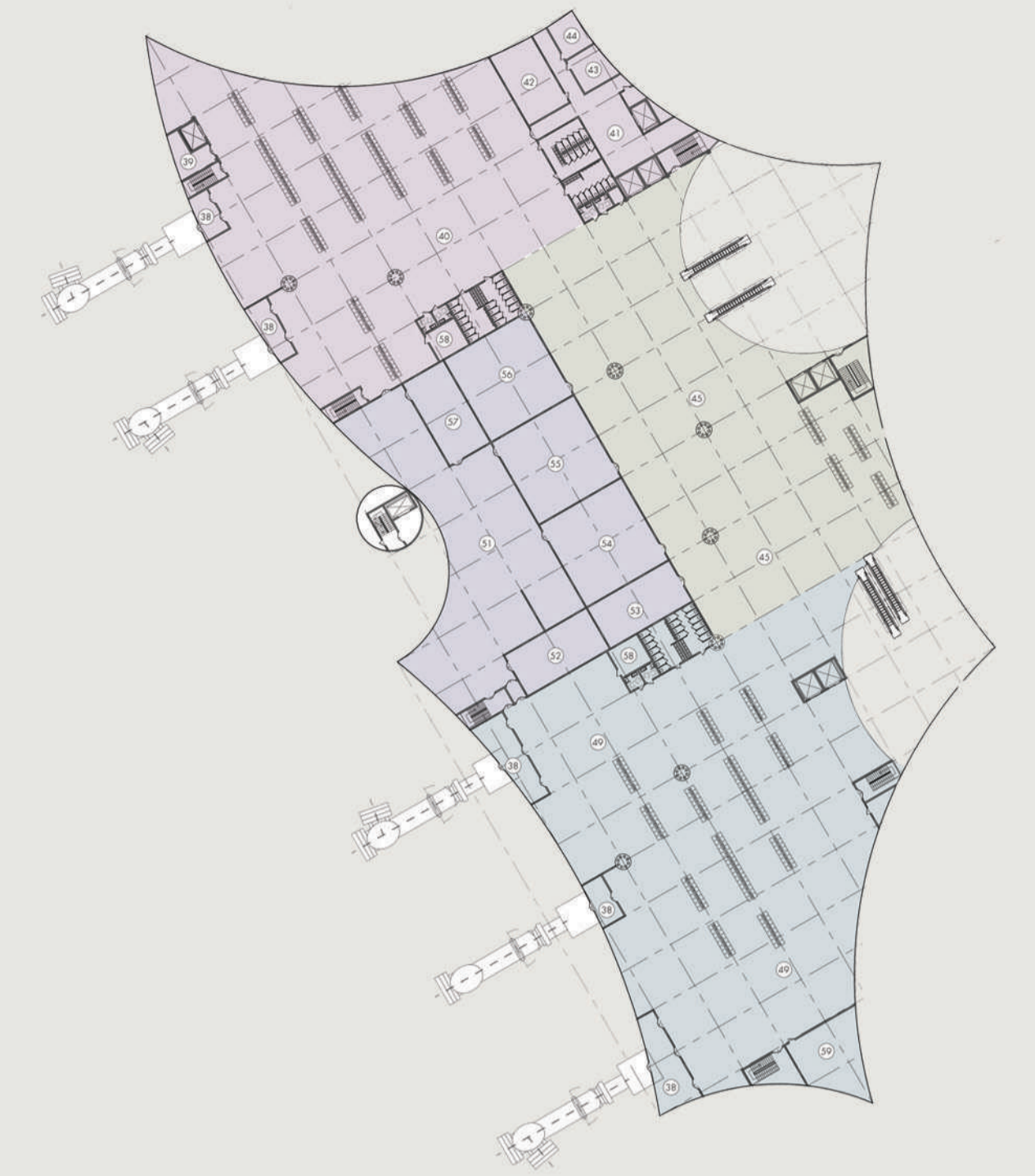
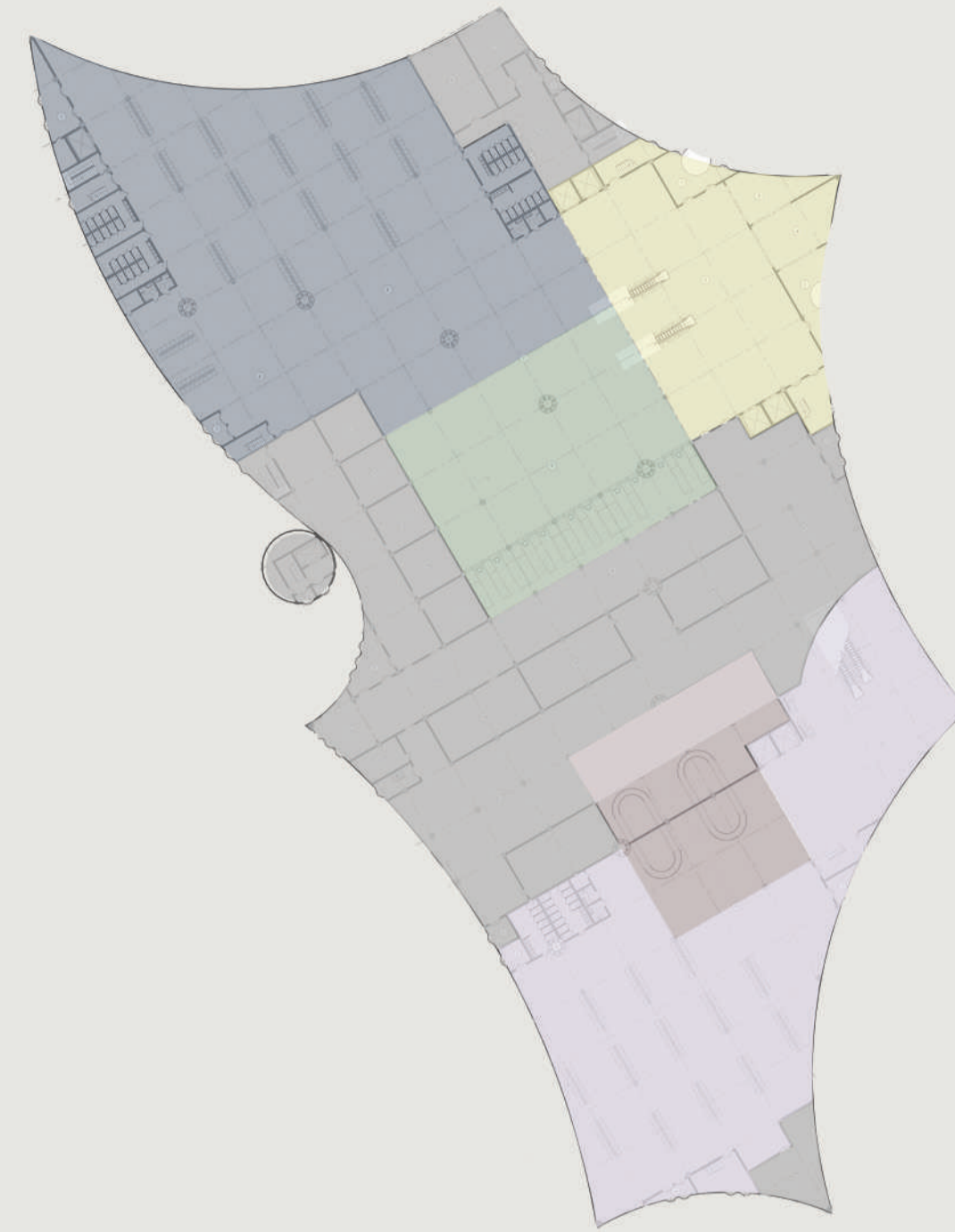
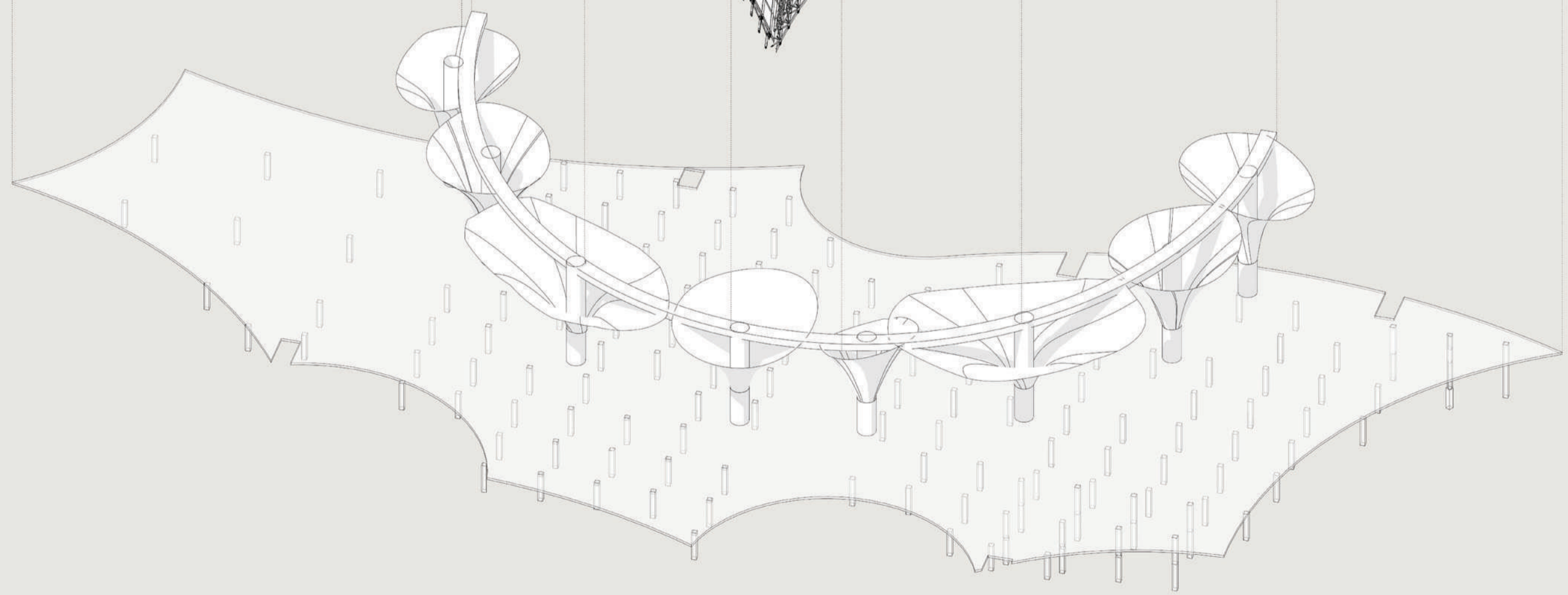
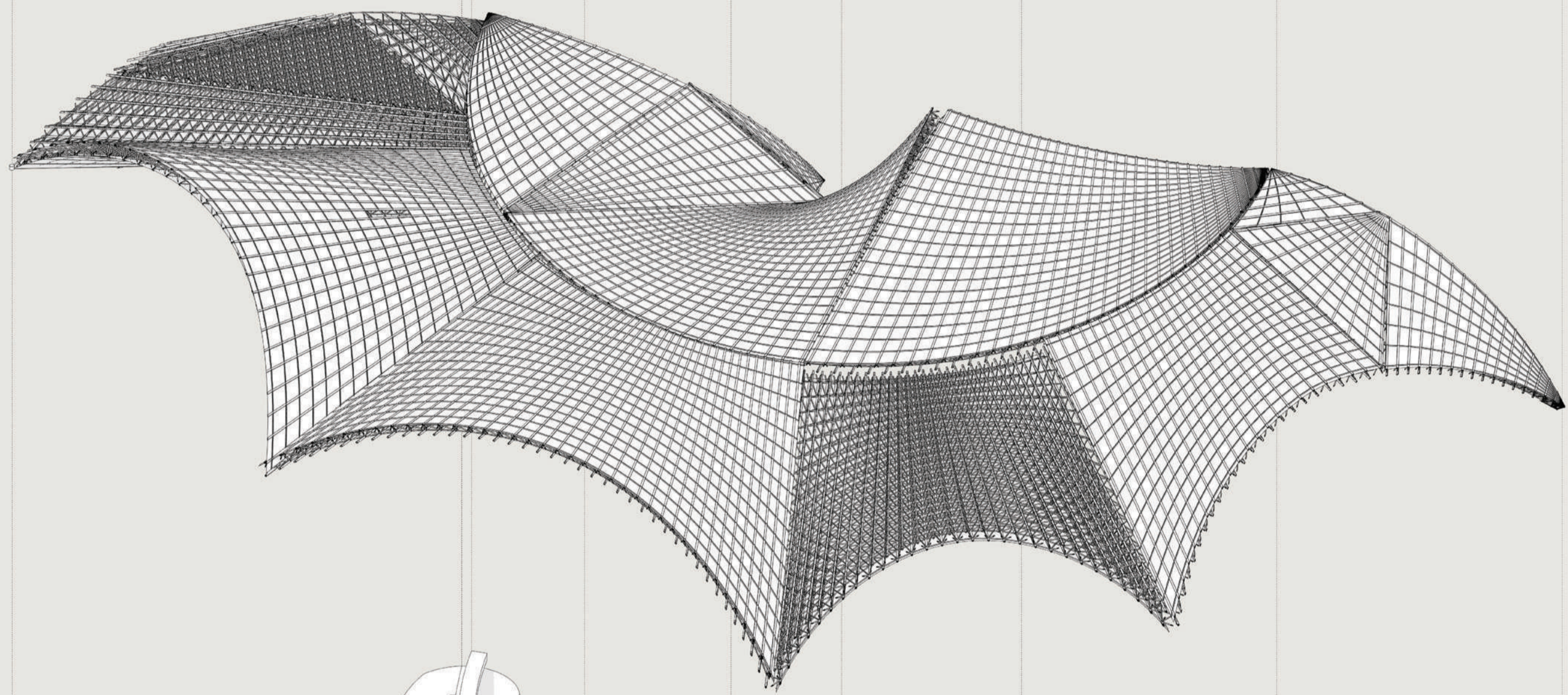
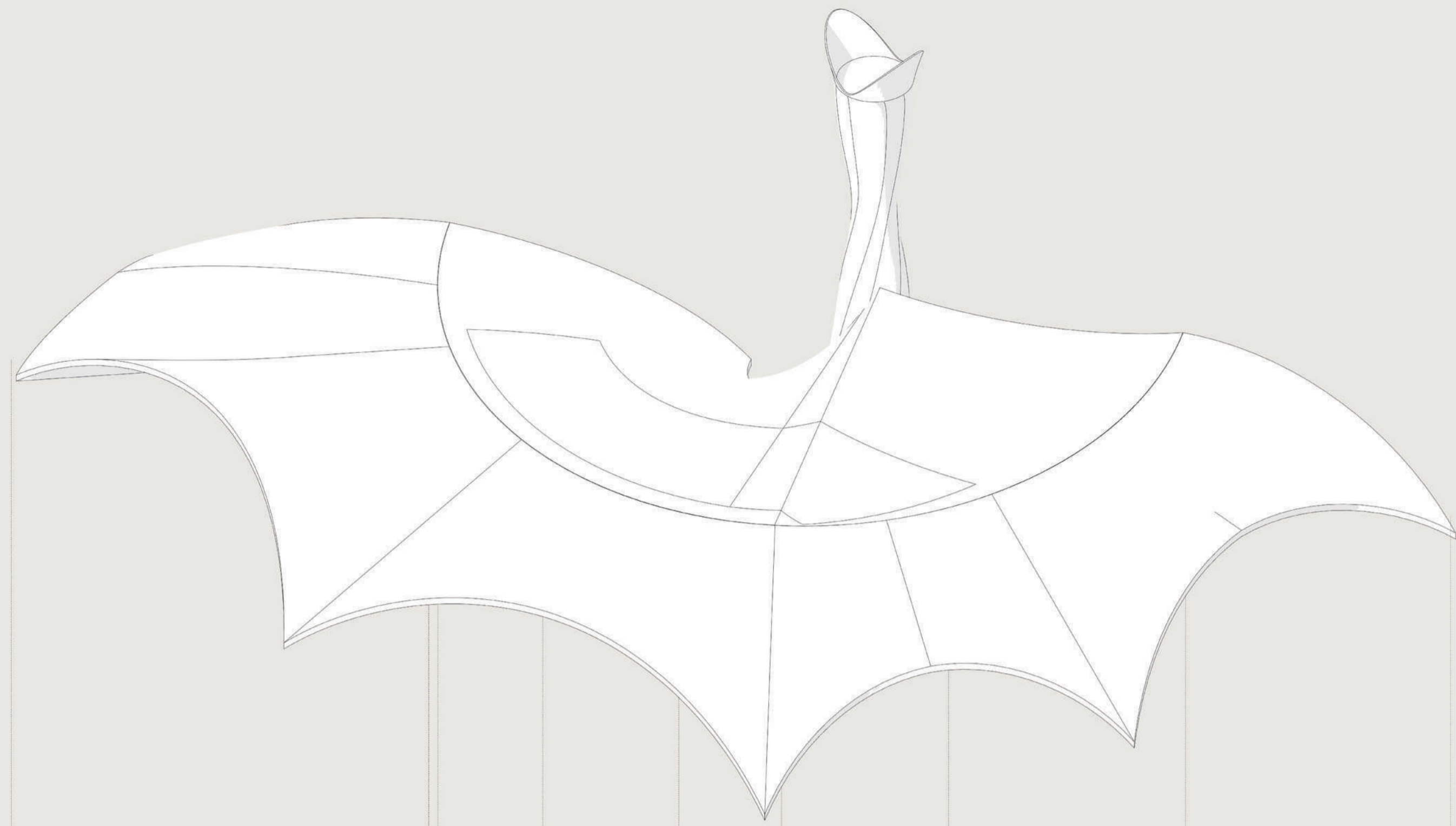


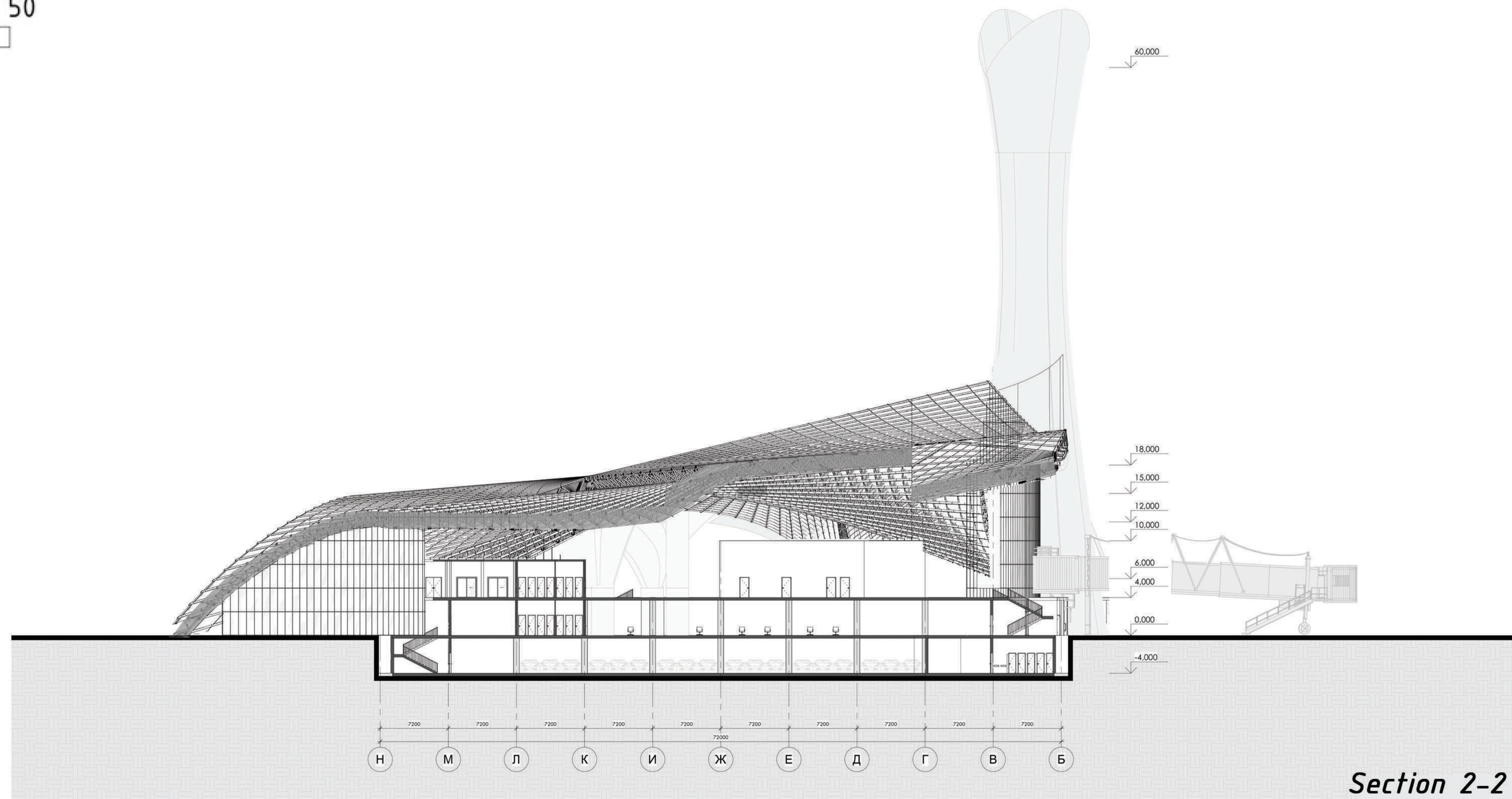
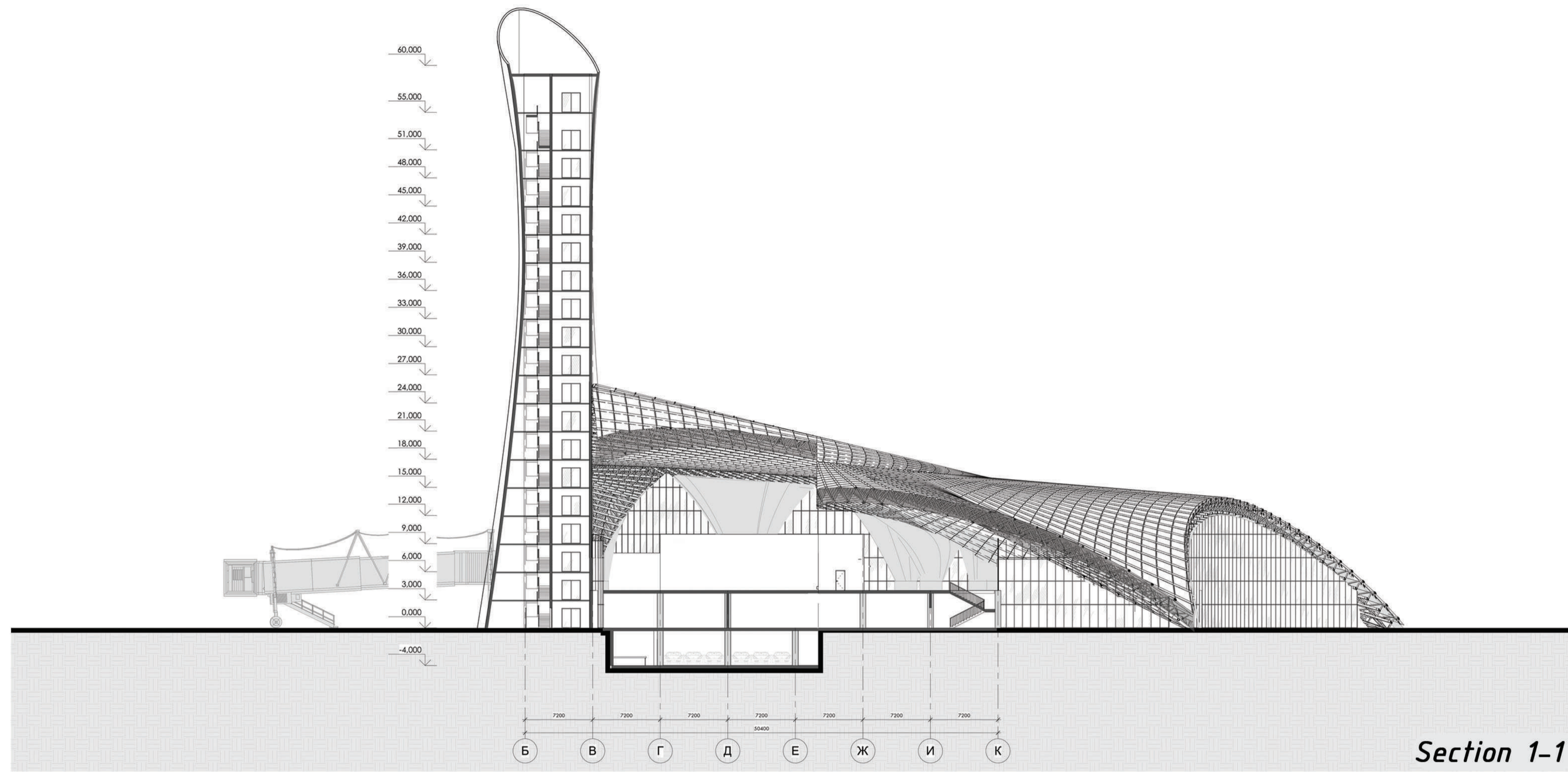
Plan at +55,000



Plan at +4,000







Section 2-2

