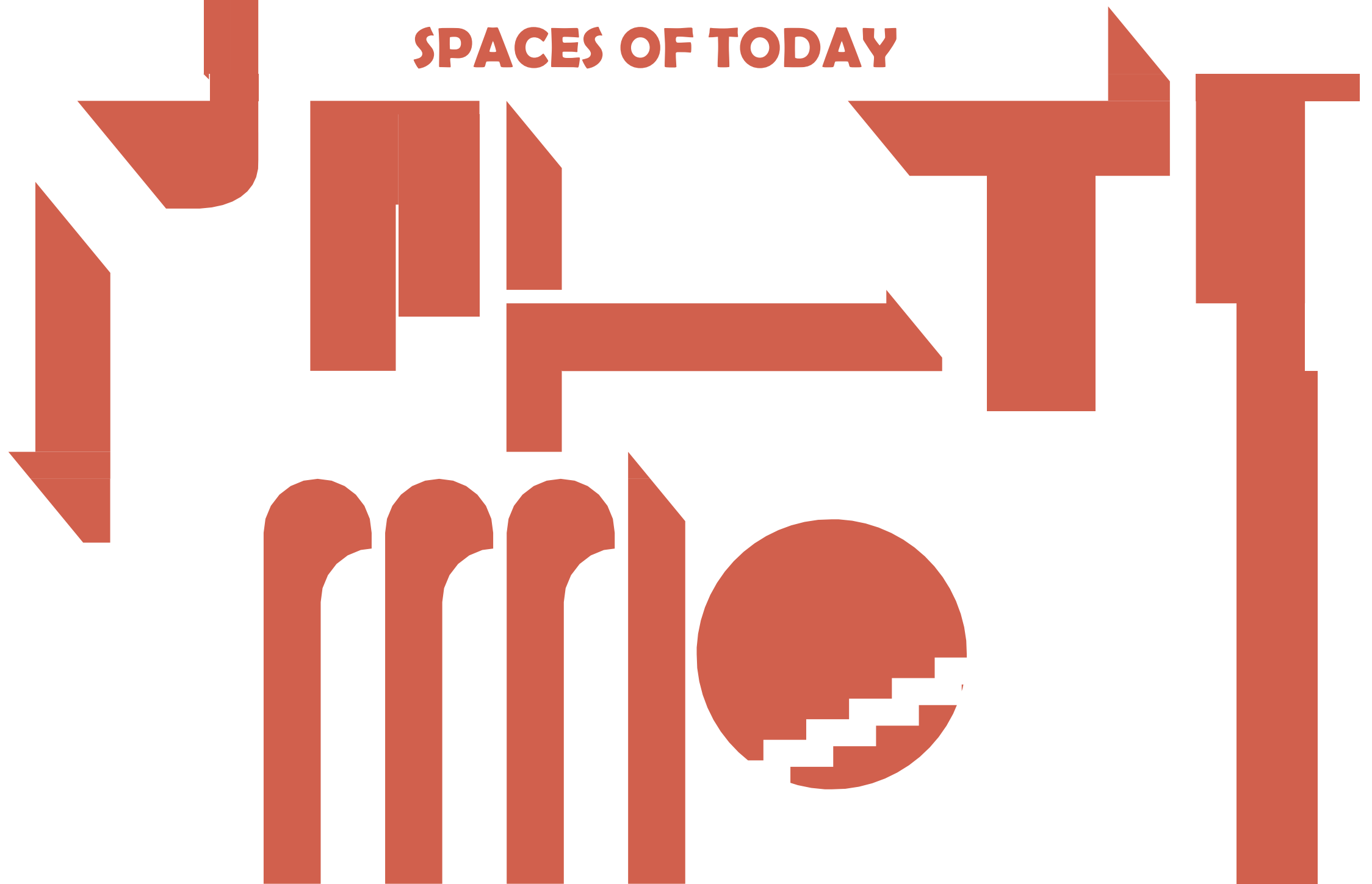




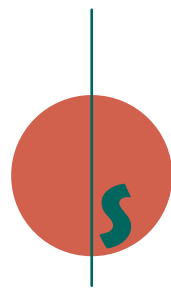
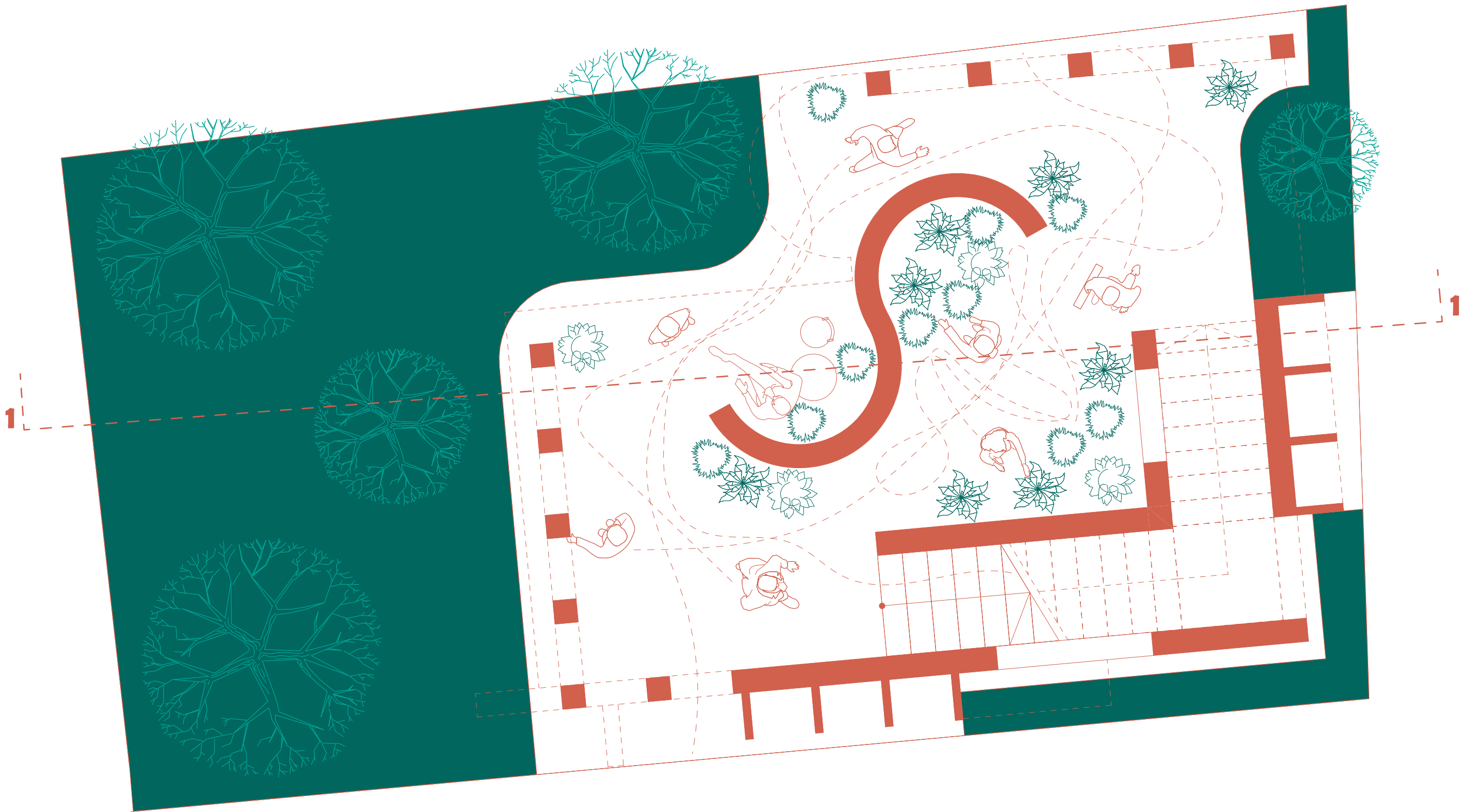
SPACES OF TODAY



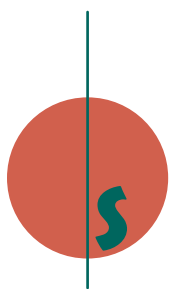
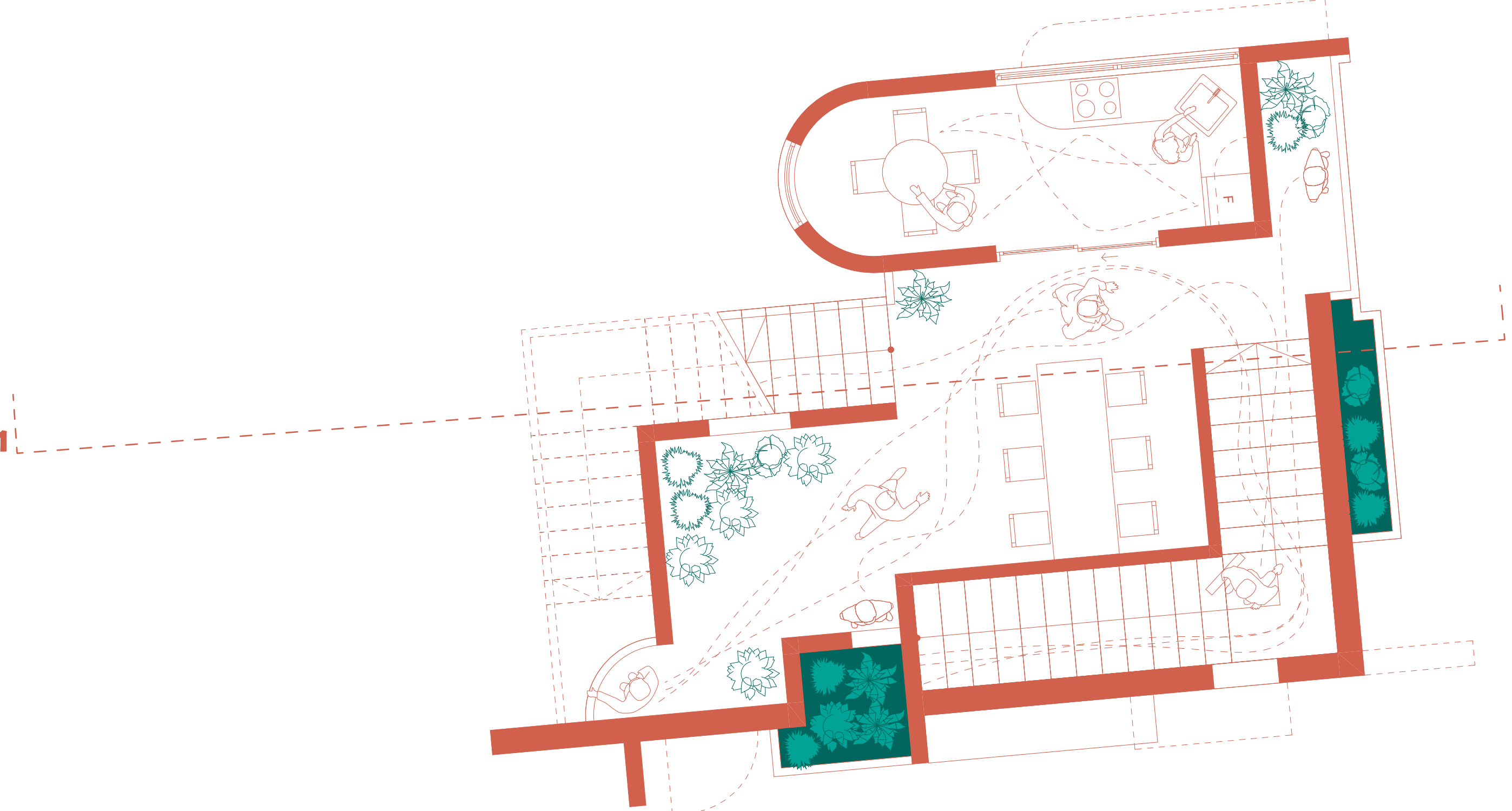
“...ONE COULD DESCRIBE THE LAYOUTS OF TEMPORARY STOPS: CAFES, CINEMAS, BEACHES. IT WOULD ALSO BE POSSIBLE TO DETERMINE, THROUGH THEIR NETWORKS OF RELATIONS, THE REST ARRANGEMENTS, CLOSED OR SEMI-OPEN, OF WHICH THE HOUSE, THE BEDROOM, THE BED, ETC. ARE COMPOSED. WITH THE UNUSUAL PROPERTY OF BEING CONNECTED TO EVERYONE ELSE, BUT IN SUCH A WAY THAT THEY CANCEL, DISEMPOWER OR REVERSE THE SET OF RELATIONSHIPS THAT THEY THEMSELVES SHAPE AND THAT ARE MIRRORED OR REFLECTED IN THEM. THOSE SPACES THAT ARE IN SOME WAY CONNECTED WITH ALL THE OTHERS, YET IN OPPOSITION TO THEM, ARE DIVIDED INTO TWO MAIN TYPES. FIRST OF ALL, UTOPIA. THESE ARE LAYOUTS THAT DO NOT HAVE REAL SPACE. LAYOUTS THAT, GENERALLY SPEAKING, ENTER INTO A RELATIONSHIP OF DIRECT OR REVERSE ANALOGY WITH REAL SPACE OR SOCIETY. THEY REPRESENT ONLY SOCIETY BROUGHT TO PERFECTION, OR ITS REVERSE, AND IN ANY CASE, UTOPIAS ARE SPACES THAT ARE UNREAL IN THEIR ESSENCE.”

- Michel Foucault

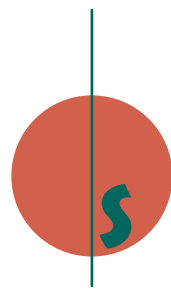
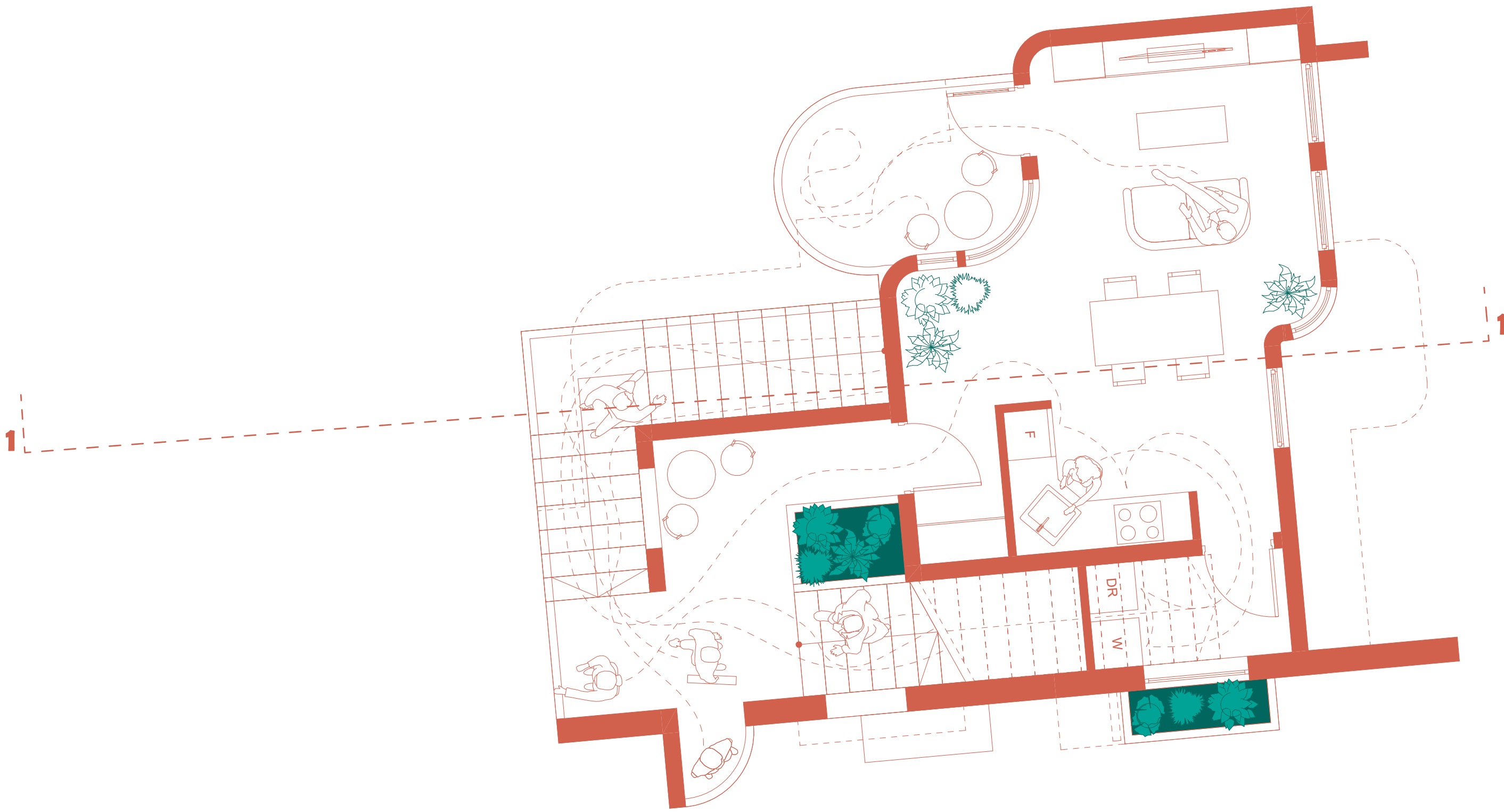
GROUND FLOOR R 1:50



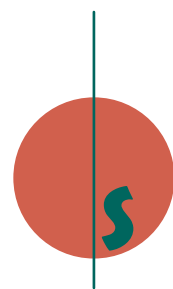
FIRST FLOOR R 1:50



SECOND FLOOR R 1:50



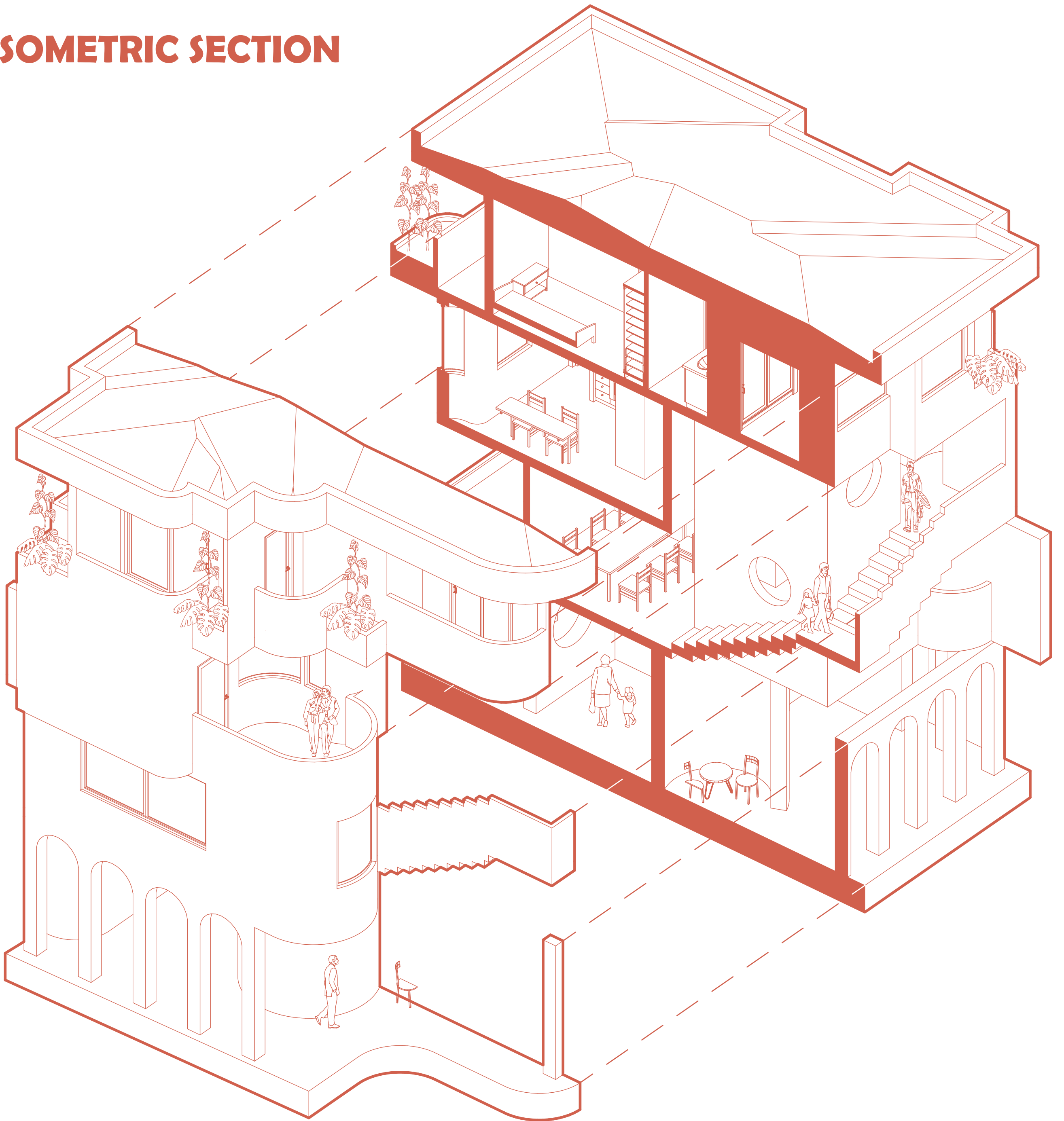
THIRD FLOOR R 1:50



SECTION 1 R 1:50



ISOMETRIC SECTION



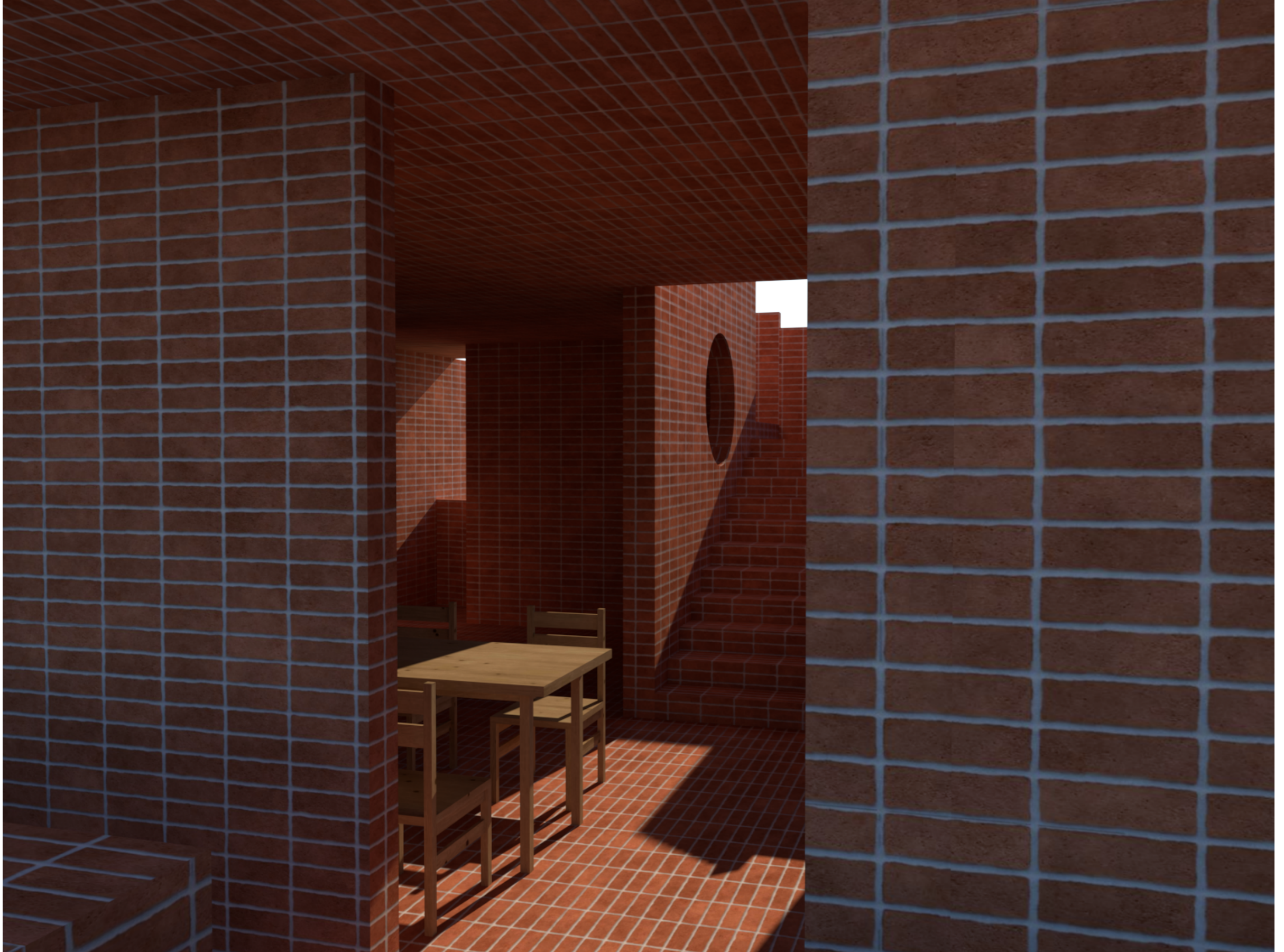
SPACES OF TODAY



SPACES OF TODAY



SPACES OF TODAY



ISOMETRIC VIEW



ISOMETRIC VIEW



AMBIENTAL VIEW

