



CROATIAN INTERLACE

MIRIS GARDEN

Creating an example of the socially and environmentally sustainable Year-round holiday resort of the 21st century!

A beacon for advancement of progress and reputation of Croatia, as well as the welfare of its citizens, the Croatian Interlace is culturally an important symbol in the Heritage of Croatia. Drawing from these goals of social, cultural and ecological welfare and advancement; our project – 'Croatian Interlace' pays homage to this iconic symbol of Croatian history.

The project focuses on redevelopment of existing Marina and Coastal Walkway, creation of new and better public infrastructure and the overall revitalisation and rejuvenation of the natural environment. Establishing major nodes with cultural and social

landmarks, the Miris Garden Coastal Walkway and Marina, contains the potential to become a lively and vibrant urban hook on the waterfront, a hotspot to strengthen the economy and local communities.

A port that takes pride in their traditions, stone monuments, sculptures, visual arts, local produce markets and wine, Croatia offers a wide variety of culture to a visitor or local.

The goal of this waterfront coastal walkway and marina was to integrate and activate these venues within the new development, in order to create a familiar, yet unique and contemporary sustainable identity for the Starigrad of Tomorrow. By inculcating programmes such as Farmers

Markets, Zen Gardens, DJ Nightclub, Sunset Point, Bird Hide, Water Squares, Sustainable fisheries, Tidal Pool, Food Street, Wine Walk, Performance Square, Open Air Amphitheatre, Sculpture Museum, etc. the project establishes itself as a versatile comprehensive urbanism park that organically integrates the sea, the natural biodiversity and the city for leisure, vitality and inclusivity.

By reclaiming the urban waterfront, activating it through our project – we can truly create an example of the socially and environmentally sustainable Year-round holiday resort of the 21st century!



SITE CONNECTIONS



ZONING NODES



GREEN NODES



GREEN ROOFS & CROP TERRACES
CAPTURE RAINFALL AND CIRCULATE INTO HARVESTING SYSTEMS

SHAPE OF FORM INSPIRED BY CROTIAN 'COAT OF ARMS'

RAINWATER HARVESTING
CAN SUPPLY MAKE UP WATER FOR POOLS, WATER FOR FLUSHING AND OTHER NON POTIBLE USE



FARM TO TABLE

LOCAL SPECIES
SUCH AS CYPRUS AND OLIVE

HERB GARDEN

RETROFIT CONCRETE

TREE TRENCHES



AIR QUALITY
PURIFIED BY GREEN NETWORKS

LAYERED ABSORPTION
-TRANSPIRATION
-ABSORPTION



INFILTRATION GARDENS
PUBLIC GARDENS ALSO HELP TO CLEANSE AND FILTER STORM WATER

LIVING BREAKWATER
70% ↓
WAVE ENERGY

TIDAL POOL

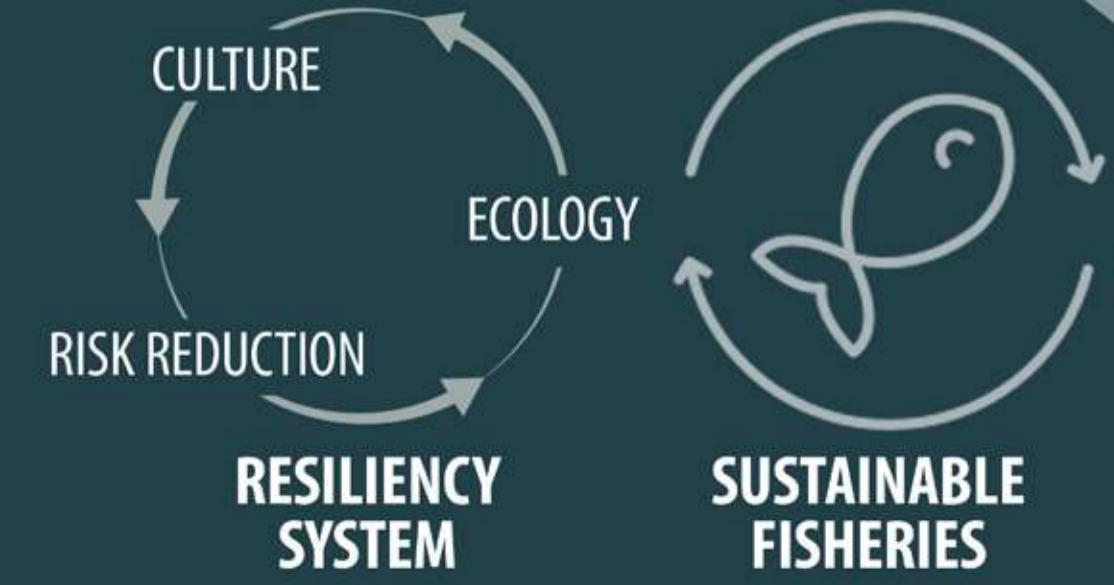
GRATING OVERWALK (PERMEABLE)

CLIMATE TILES

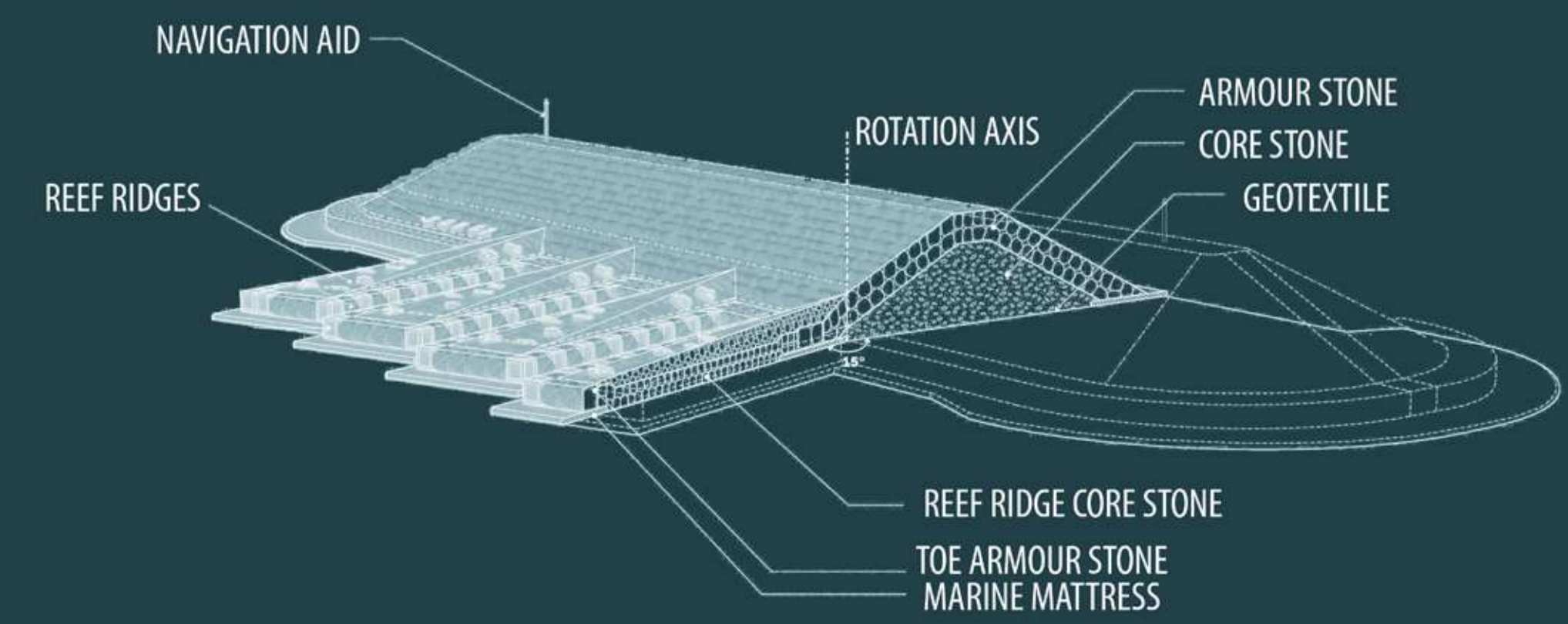
THE MAIN COMPONENT IS ESSENTIALLY A HYBRID BETWEEN A CONCRETE TILE, AN INTELLIGENT WATER PIPE SYSTEM and A PERMEABLE SURFACE

COVE

SHALLOWS



CRUSTACEAN FLUPSYSYTEM



LIVING BREAKWATER SECTION A-A'



MUSKY OYSTER

CURLY OYSTER



NORWAY LOBSTER

SPIDER CRAB

EUROPEAN LOBSTER

PALINURUS ELEPHAS

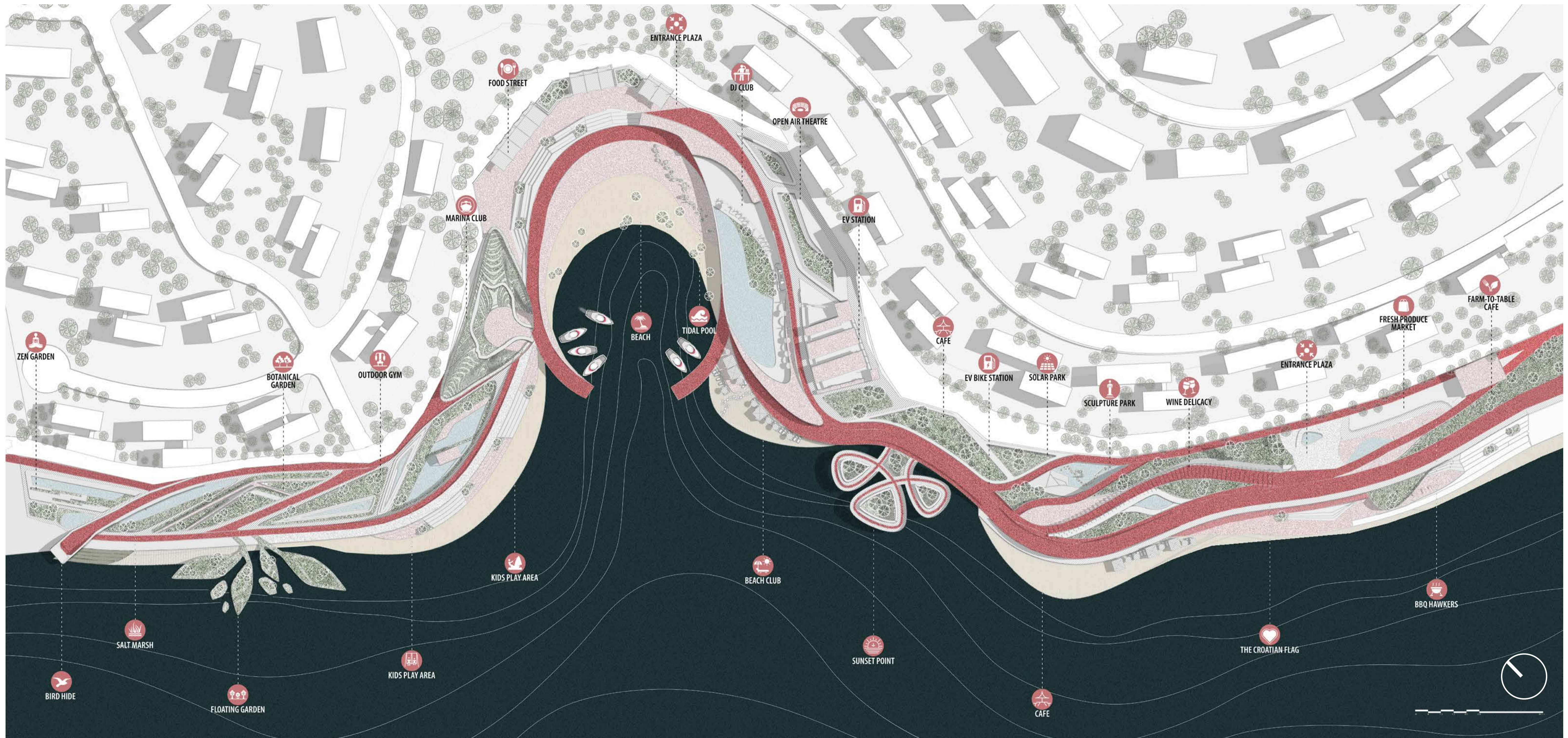


SARDINE

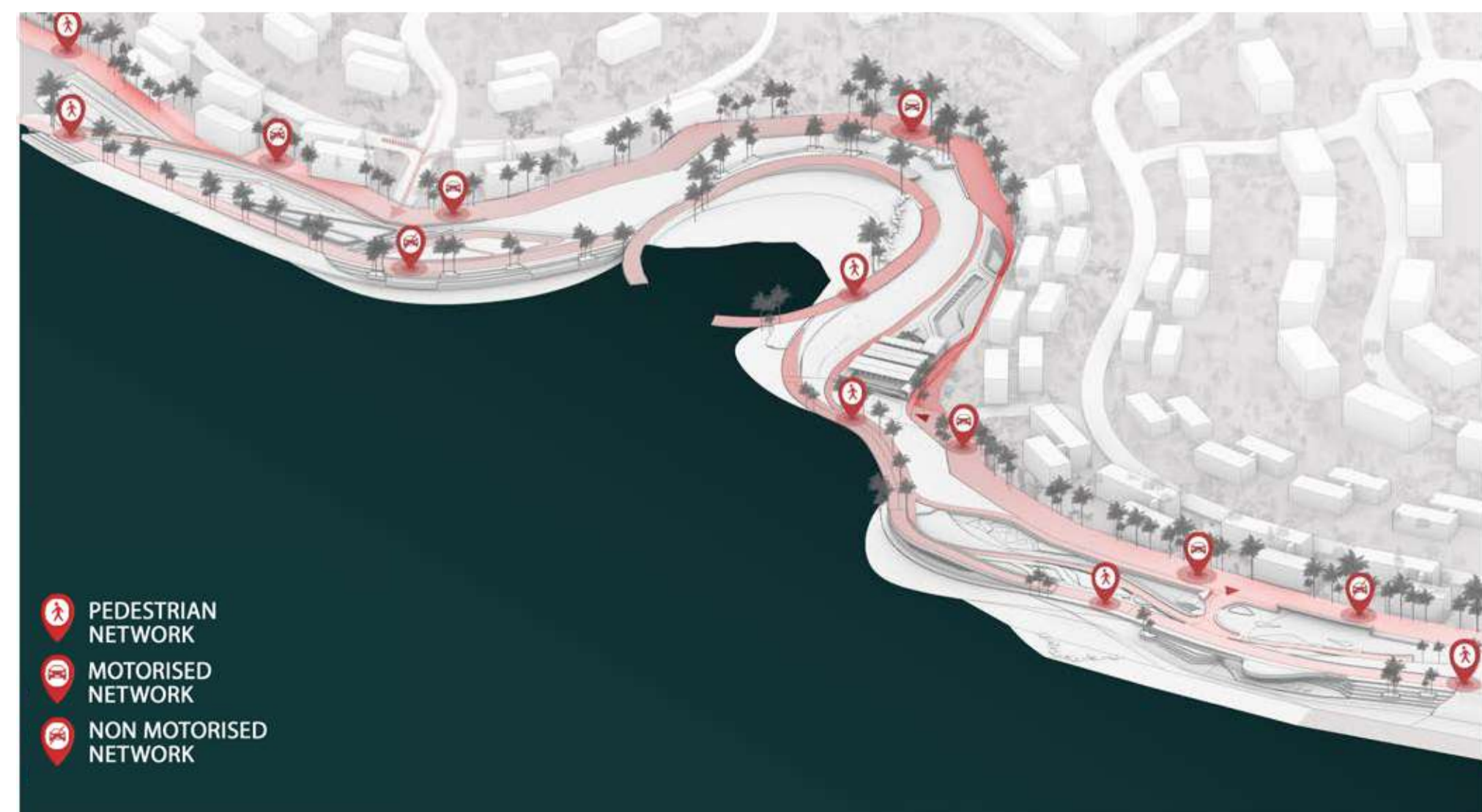
EUROPEAN ANCHOVY

PELAGIC SPECIES

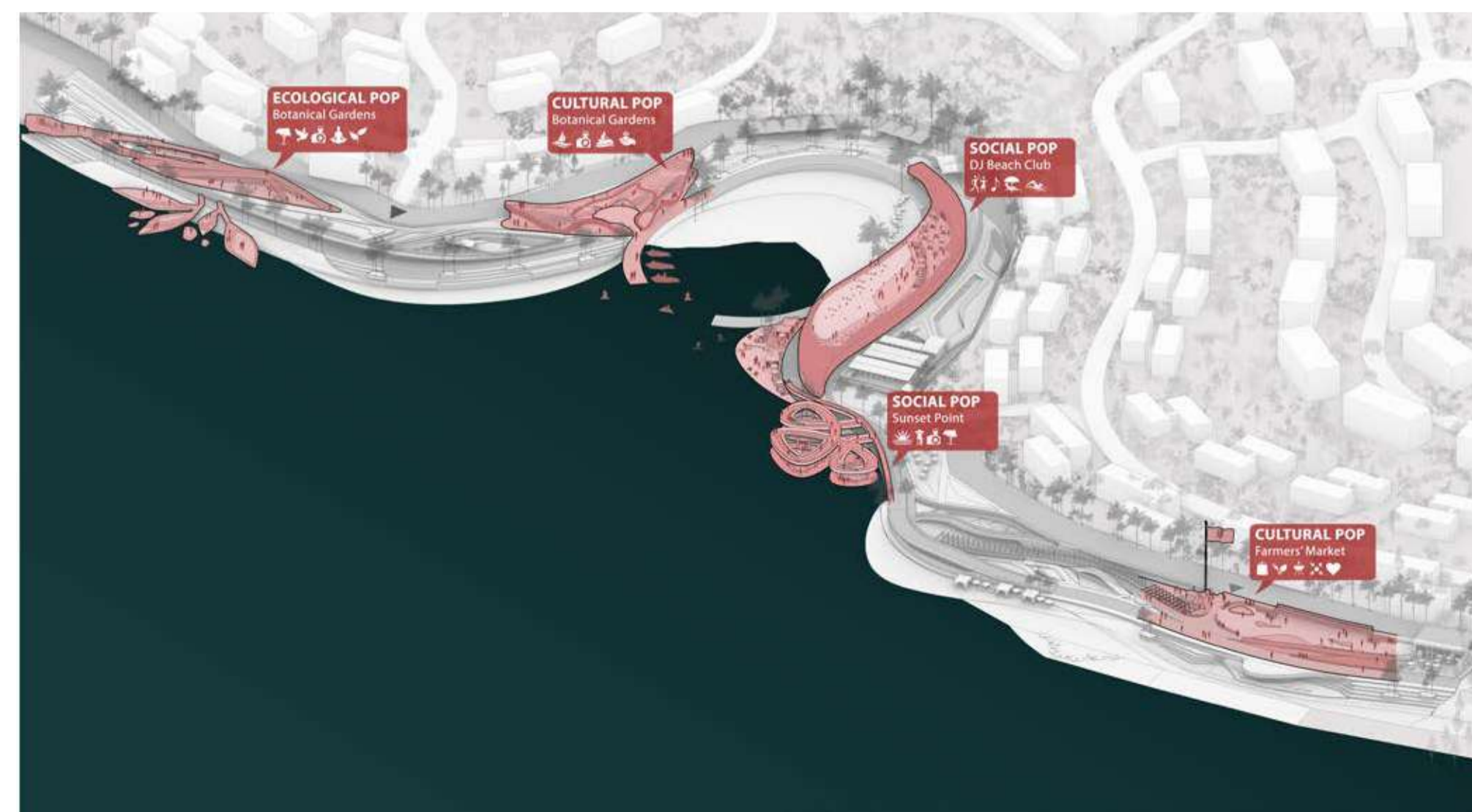
ADRIATIC SOLE



MASTERPLAN



PHASE 1: CONNECT THE POPS
Creating three networks across the site; social, cultural and ecological



PHASE 2: CREATING THE POPS
Creating urban accupuncture across site with public focus



PHASE 3: BOOSTING THE POPS
Sustaining the nodes through economic and public realm creation

IDENTITY

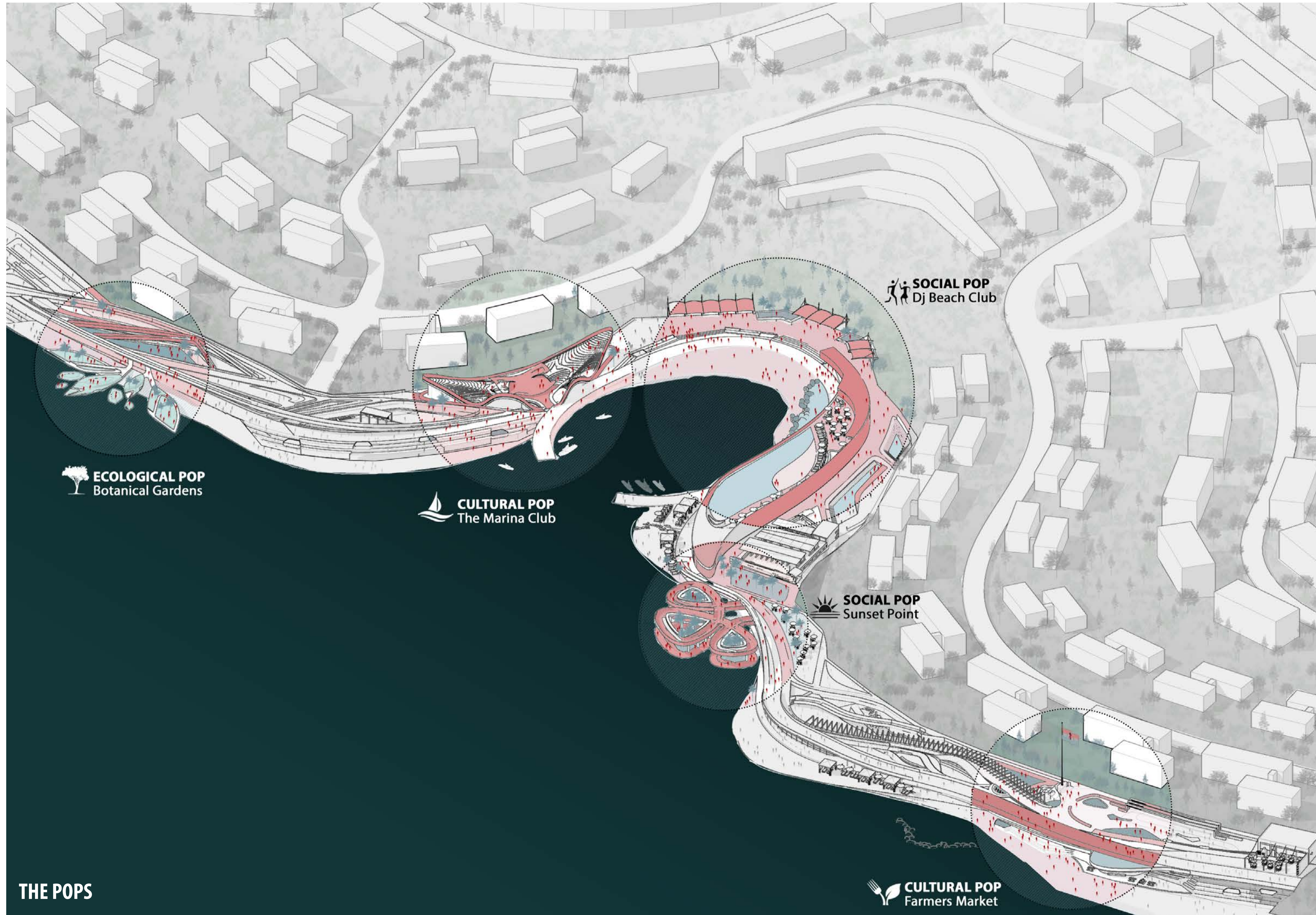
The project aims to identify a wide range of solutions for the waterfront site which harness innovative, ecologically sustainable materials and respond to the local climate and context of the site. Keeping the natural topography at the forefront of design, the project aims for minimum excavation - and rather to optimise the natural slope of the site to maximise accessibility and views to the Adriatic Sea. It articulates the sense of memory and experiential recognition from the natural terrain of the site itself.

CREATING THE 'POPS'

By creating 3 primary networks or Urban acupuncture along the main connectivity spine of the site, we have created a zoning plan that can cater to a user with any intent - be it social, ecological or cultural. Each of the networks features panoramic views and ideal access and proximity to the Sea, while also allowing the users to engage in a variety of programmes that allow the users to fully immerse themselves into the respective intents. These three distinct networks, have three distinct characteristics, experiences and programmes and connect to either end of the waterfront.

By meandering through these social, ecological and cultural spines, one comes across the POPS through which the aim of this project is realised - rather than by being a static, one dimensional experience of the site, and rather a multi-faceted sensorial journey through the cultural, social and ecological vibrancy of the area. At key intersections along the main connectivity spines, social, ecological and cultural nodes, i.e. 'POPs' are created to promote inclusivity, public realm activities, tourism and economic generation of this site.

In addition to history, interested walkers can also become more acquainted with the richness of the coastal vegetation and the beneficial effects of the local climate. Alongside the Interlace grow some beautiful specimens of plants and trees that are typical of the local area: the aromatic landscape fills the air with fragrant scents. Along the entire route, there are numerous green spaces, cycle and pedestrian paths, and sports areas. There are also outdoor gyms, wellness areas (zen gardens), DJ nightclub, food hawkers and cafes.



GREENING THE SITE



NETWORKS



AMENITIES



THE 'SOCIAL' POP

At key intersections along the main connectivity spines, **social nodes** are created to promote **inclusivity, public realm activities, tourism and economic generation** of this site.

The connectivity spine is punctured by 'Social Pops', i.e., attractions and destinations such as the **Marina Club, DJ beach & Night Club, Amphitheatre, pop-up galleries, local markets, sports centre, yoga gardens, botanical gardens, etc.**

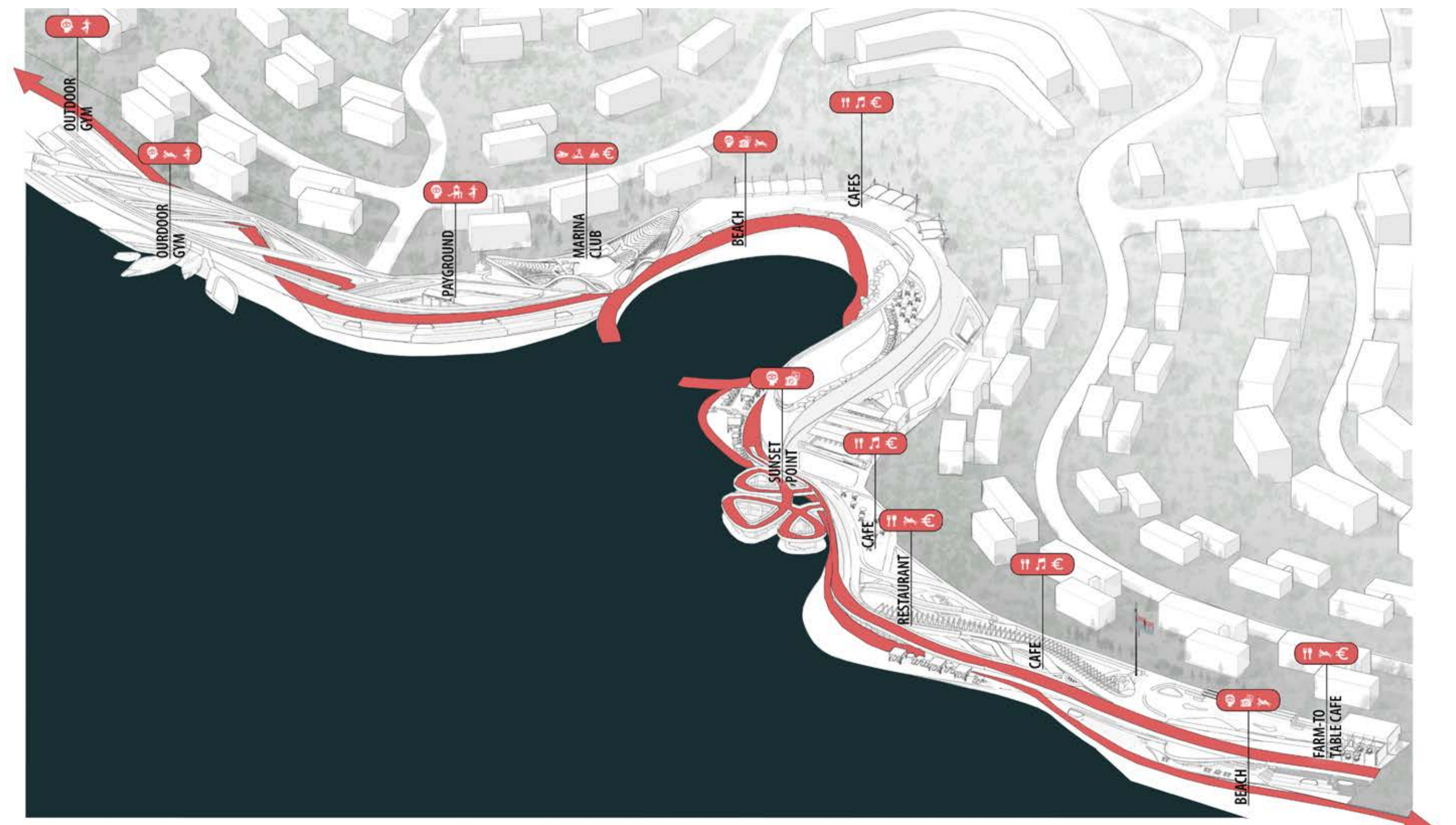
- **Sunset Point** : The shape and design of the sunset point is derived from the 'Croatian Interlace', and is designed to maximise visual access to the Adriatic Sea from three axis. Due to its shape and design, it allows for panoramic views to the horizon, making it an ideal place to enjoy the sunset for users.

- **Marina Club & Cafe** : The Marina Club & Cafe includes watersporting, decks for the ferry as well as cafe cum restaurant for the users to enjoy. The roof of the club is contoured to mimic the natural topography of the site and also act as a site for the fragrant herb gardens.

- **DJ NightClub** : Enjoy a nightout at the DJ Club on the beach, with Bbq Hawkers, food trucks and a dance floor deck on the pool.

- **Farm to Table Cafes** : Enculcating the sustainable vision of our project, cafes incorporate farm to table ideology. Using fresh produce grown in-house, the users can interact with the food they are consuming.

- **Zen Gardens** : Embrace the tranquility and peaceful environment of the floating islands, surrounded by the natural biodiversity of Croatia. Enjoy Yoga sessions within the lap of nature.





COASTAL WALKWAY

BIFURCATED BICYCLE AND PEDESTRIAN WALKWAY WITH PANORAMIC VIEWS TO ADJACENT COAST



TERRACE GARDENS

ACCESSIBLE HERB AND FLOWER GARDENS



MARINA CLUB & CAFE

ENJOY A BITE OVERLOOKING THE SCENERY



MARINA

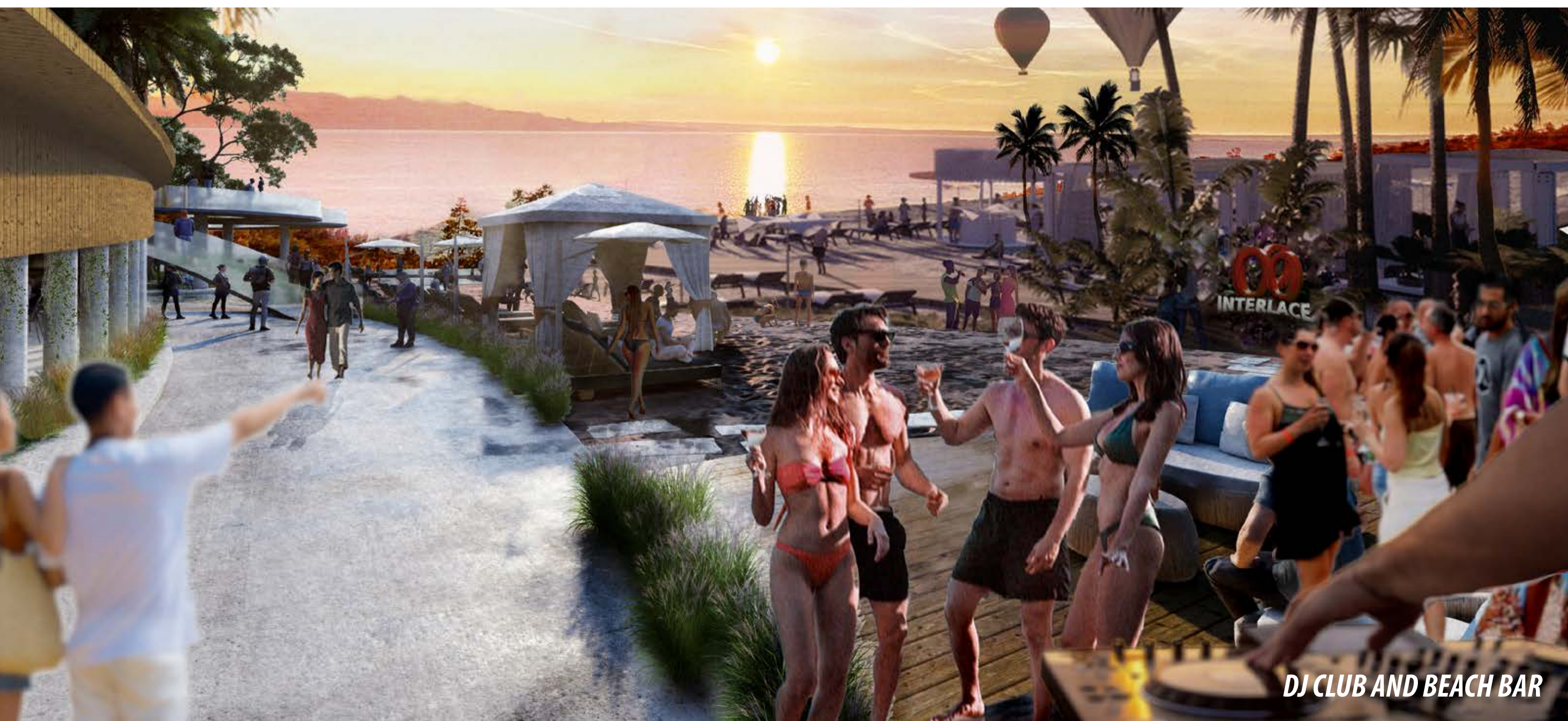


LOCALLY SOURCED TILES



PUBLIC BEACH

MARINA CLUB & CAFE



DJ CLUB AND BEACH BAR



ENJOY THE SUN SETTING OVER THE ADRIATIC



THE 'ECOLOGICAL' POP

THE 'ECOLOGICAL' POP

At key intersections along the main connectivity spines, **Ecological nodes** are created to promote **sustainability, biodiversity, tourism and the ecology of this site.** The connectivity spine is punctured by 'Ecological Pops', i.e., attractions and destinations such as the **Zen Gardens, Bird Hide, Biosphere Gardens, Botanical & Herb Gardens, Sustainable Fisheries, Salt Marsh, Tidal Pool, Water Squares, Retention Gardens, EV Station, Shellfish Flupsy, etc.**

- **Bird Hide** : The Bird Hide is situated within the Biosphere Gardens and serves as a viewing deck for the local and migratory species of birds such as Bearded reedling, Wallcreeper, Eurasian Penduline Tit, European Goldfinch, Eurasian griffon vulture, Streaked scrub warbler, Boreal Owl, European Bee-eater, Purple Heron, etc.

- **Biosphere Gardens** : The Biosphere Gardens include the fragrant and scenic Botanical and Herb Gardens. They include a myriad of flowers such as irises, lavender blossom, nettle, thyme, chomomile, rosemary, daisy, common mallow, Croatian sibiraea, etc.

- **Water Squares** : Inspired by 'Baolis'- water squares are low lying public plazas that can be submerged in case of rainfall. They accumulate water and act as interactive public pools during monsoon, while recharging ground water and public plazas during summer months.

- **Shellfish Flupsy** : It is an Upweller system that grows and protects shellfish in open water, and rejuvenates the ocean biodiversity.

- **Sustainable Fisheries** : Rod-and-reel fishing methods used to protect marine habitat.

- **Tidal Pool** : Public constructed Tidal Pool, promotes blue ecosystem, while also creating public activity zones.





SOLAR POWER LIGHTPOLE
SOLAR POWERED LIGHTING MAINTAINS GREEN VISION OF PROJECT

BIRD HIDE
OBSERVE THE NATURAL BIODIVERSITY OF THE SITE AND NEIGHBOURING NATIONAL PARK

COASTAL WALKWAY
BIFORCATED BICYCLE AND PEDESTRIAN WALKWAY WITH PANORAMIC VIEWS TO ADJACENT COAST

SUSTAINABLE RETROFIT CONCRETE

LOCALLY SOURCED TILES

BOTANICAL GARDENS

EXPLORE THE MYRIAD BIODIVERSITY OF CROATIA IN THE BIRD HIDE



EMBRACE ZEN LIVING IN THE YODA GARDENS



TAKE A WALK THROUGH THE BOTANICAL GARDENS



THE 'CULTURAL' POP

At key intersections along the main connectivity spines, **Cultural** nodes are created to promote the heritage, culture, tourism and the arts and craft of Croatia.

The connectivity spine is punctured by 'Cultural Pops', i.e., attractions and destinations such as the Performance Square, Food Street, Graffiti Street, Wine Tour, Open Air Amphitheatre, Sculpture Museum, Farmers Market, Farm to Table cafes, Beach, etc.

- **Performance Square** : The Performance Square allows users to interact and engage in Croatian folk dances such as Kolo, interactive theatre performances and arts and craft.

- **Food Street** : The Food street allows users to engage with Croatian delicacies year round such as Ćevapi, Češnjovka, Fritule, etc. so that users can get a taste of Local Croatian Street Cuisine.

- **Wine Walk** : Famous for its spectacular wine, Croatia contains a wide variety of wine. To showcase the natural produce, we have created a wine walk adjacent to the coastal walkway so users can enjoy a glass of their favourite Plavac Mali while strolling along the Adriatic coast.

- **Sculpture Museum**: Famous for its Sculpture art, we have created an open air Sculpture Museum, where users can stroll through the site and view traditional Croatian-style Sculptures, embracing the heritage of this magnificent country.

- **Farmers Market**: Inspired by 'Bazaars', Local Markets are put up year round - especially around Christmas time!

- **Open Air Amphitheatre**: O.A.T. is located in the centre of the site and allows users a panoramic view of the sea and also used for dance, music & theatre performances.





MARINA



CONTOURS
 CONTOURS MIMICKING THE NATURAL
 TOPOGRAPHY OF THE SITE



HERB GARDEN
 FRAGRANT HERB GARDEN



IRIS GARDEN
 PAYING HOMAGE TO THE NATIONAL
 FLOWER OF CROATIA



**SUSTAINABLE
 RETROFIT CONCRETE**
 REUSING OLD CONCRETE

HERB TERRACED GARDENS ATOP THE MARINA CLUB



SCULPTURE MUSEUM AND 'CROATIAN STEPS'

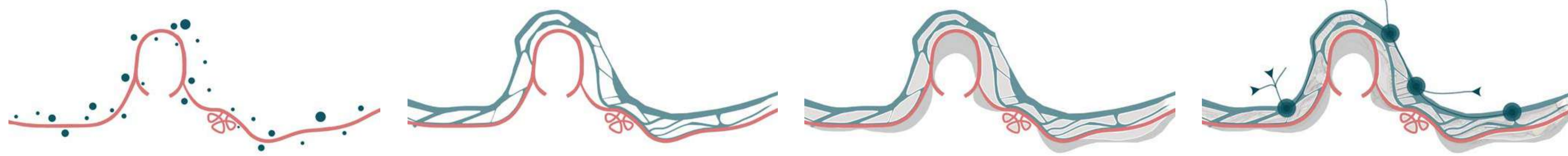


ENJOYING THE NATURAL CULTURE OF CROATIA



COASTAL WALKWAY & BEACH

FORM EVOLUTION OF COASTAL WALKWAY



Coastal walkway + nodes

Articulating circulation network

Developing land pockets and beaches

Connect to the city

CITY BRANDING



Inspired by the National Flower of Croatia- We have created urban furniture for the coastal walkway & Marina: **Markers, Seating, Solar powered Lightpoles and planters** to establish city identity.