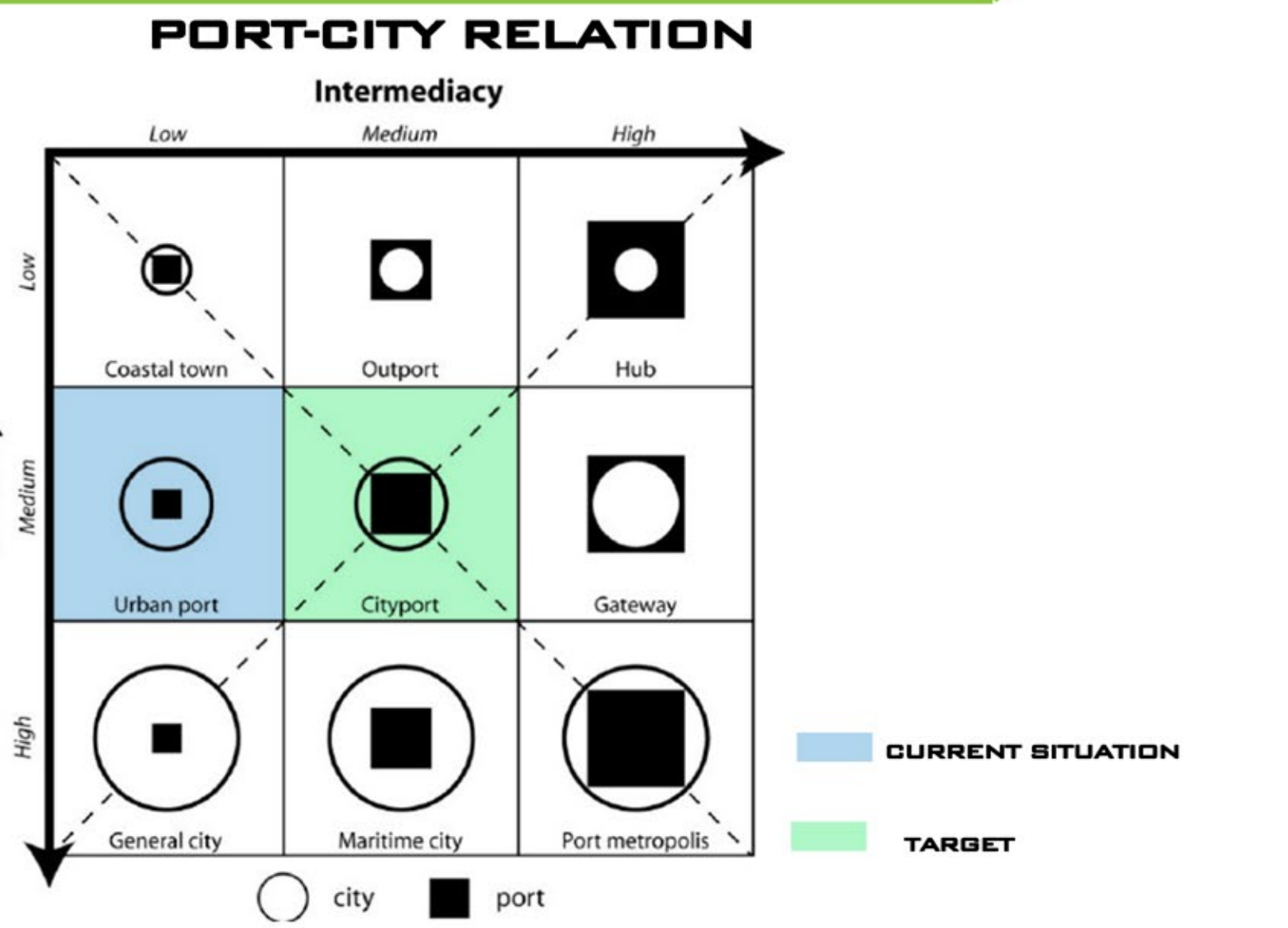


# PORT-CITY SUTURE

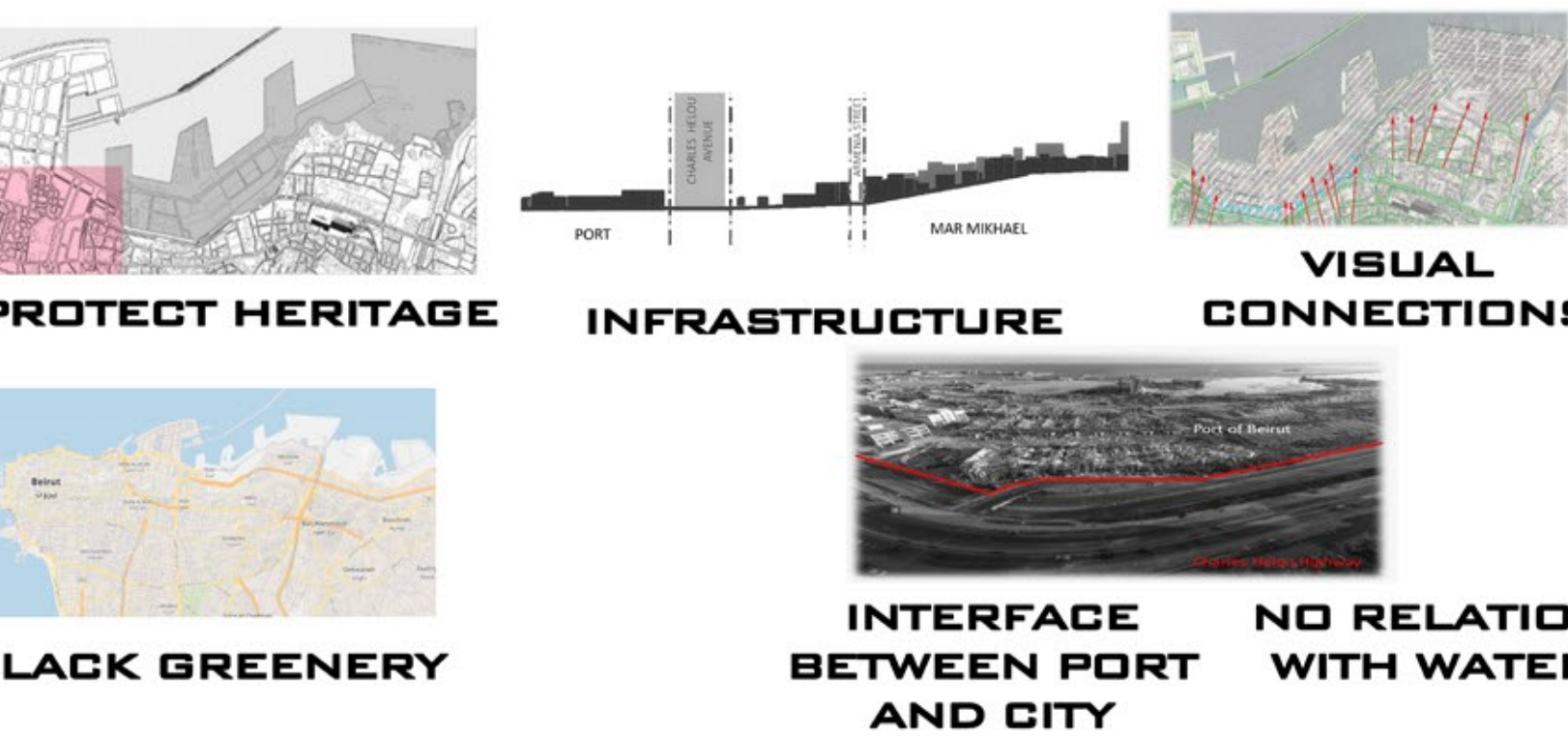
## CONCEPTUAL APPROACH



**MAIN PROBLEMATICS**

1) HOW TO TRANSFORM BEIRUT INTO A FUTURISTIC PORT-CITY?

2) WHAT ARE THE REQUIREMENTS AND MISSING ASPECTS?



IMPORTANT AXIS EXTENDED FROM THE CITY TO THE PORT:

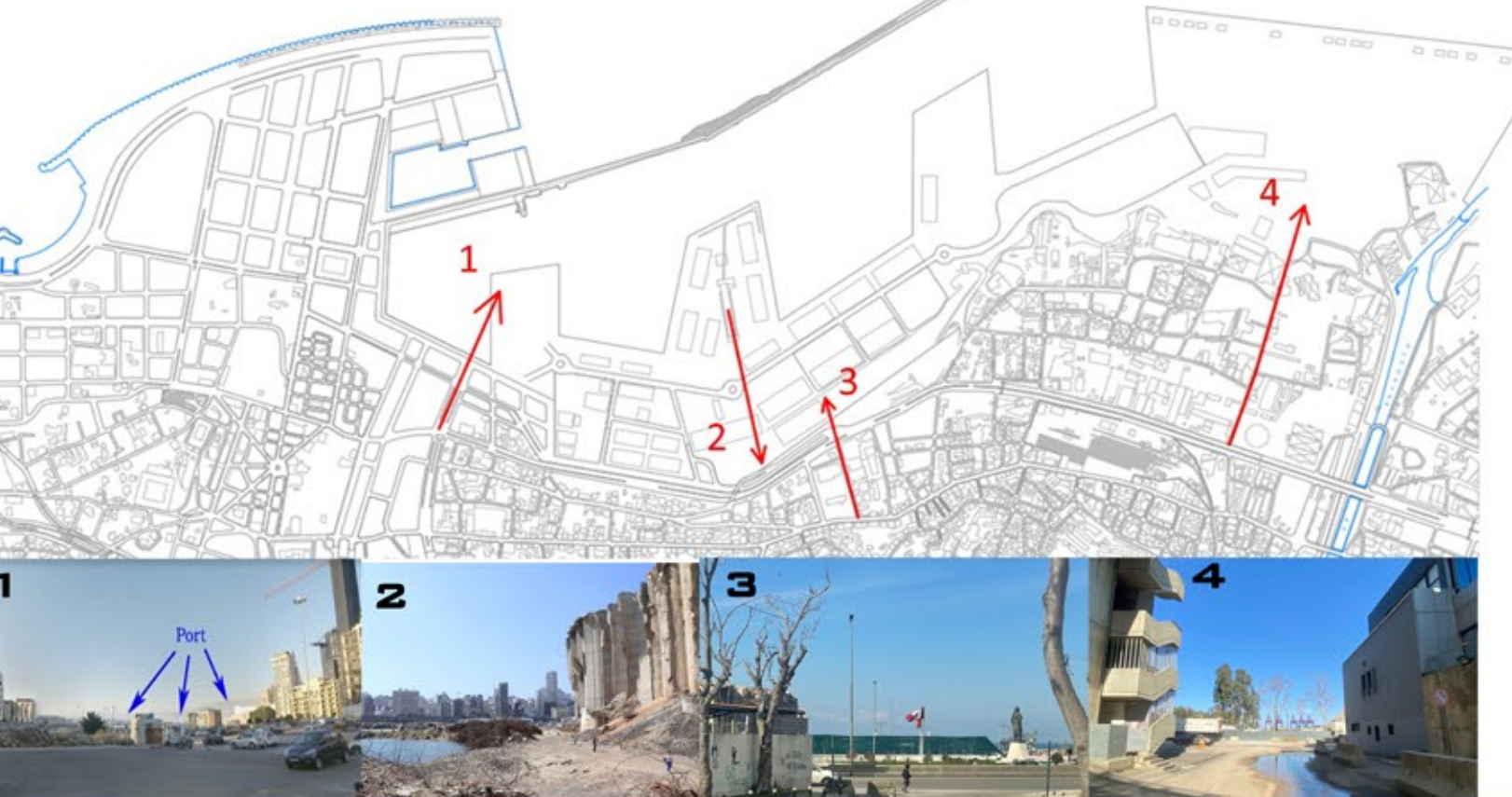
1-FROM THE ARCHEOLOGICAL SITE

3-FROM EDL

4-FROM IBRAHIM BACHA STREET

IMPORTANT AXIS EXTENDED FROM THE PORT TO THE CITY:

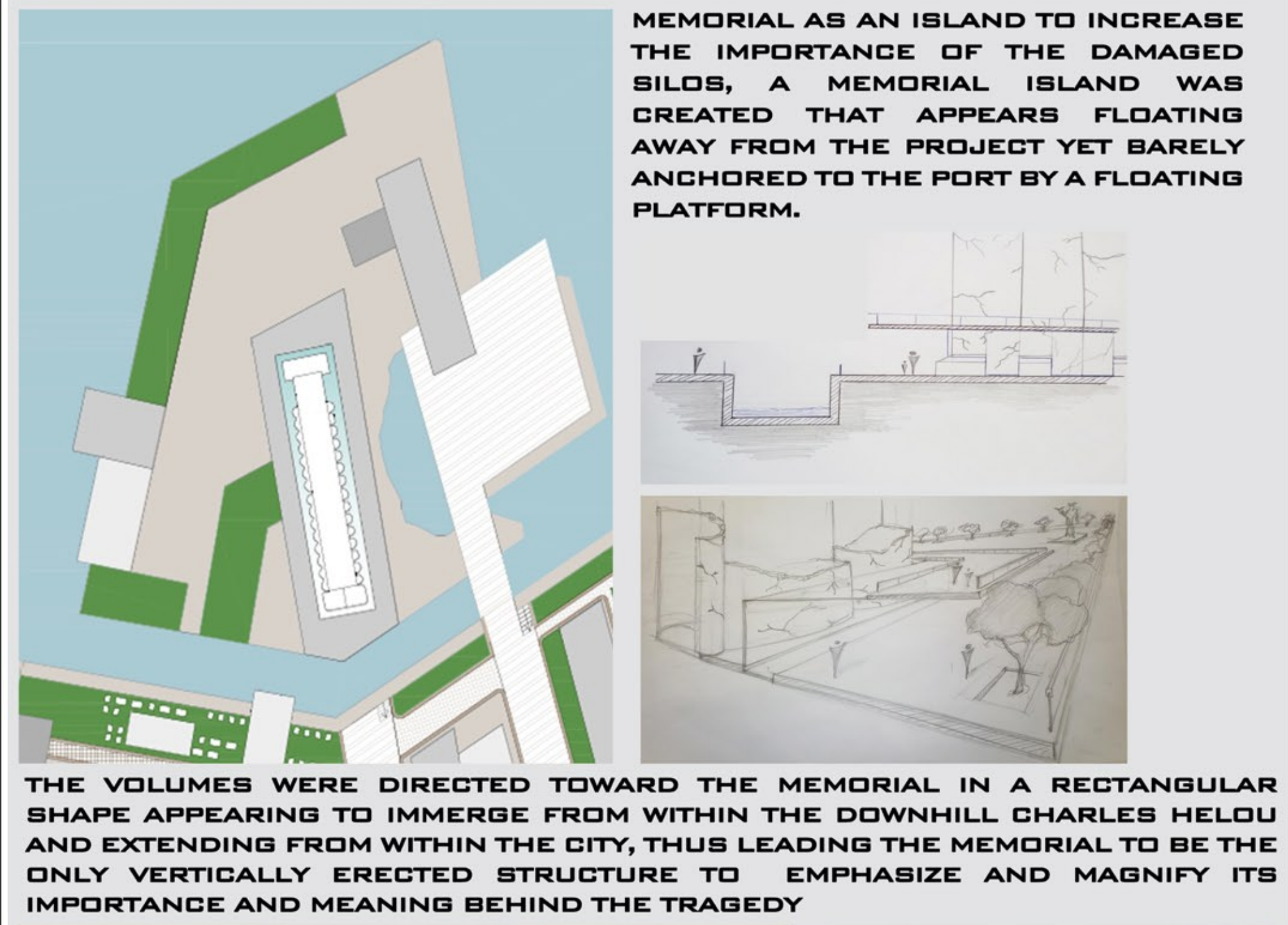
2-FROM THE DAMAGED SILOS



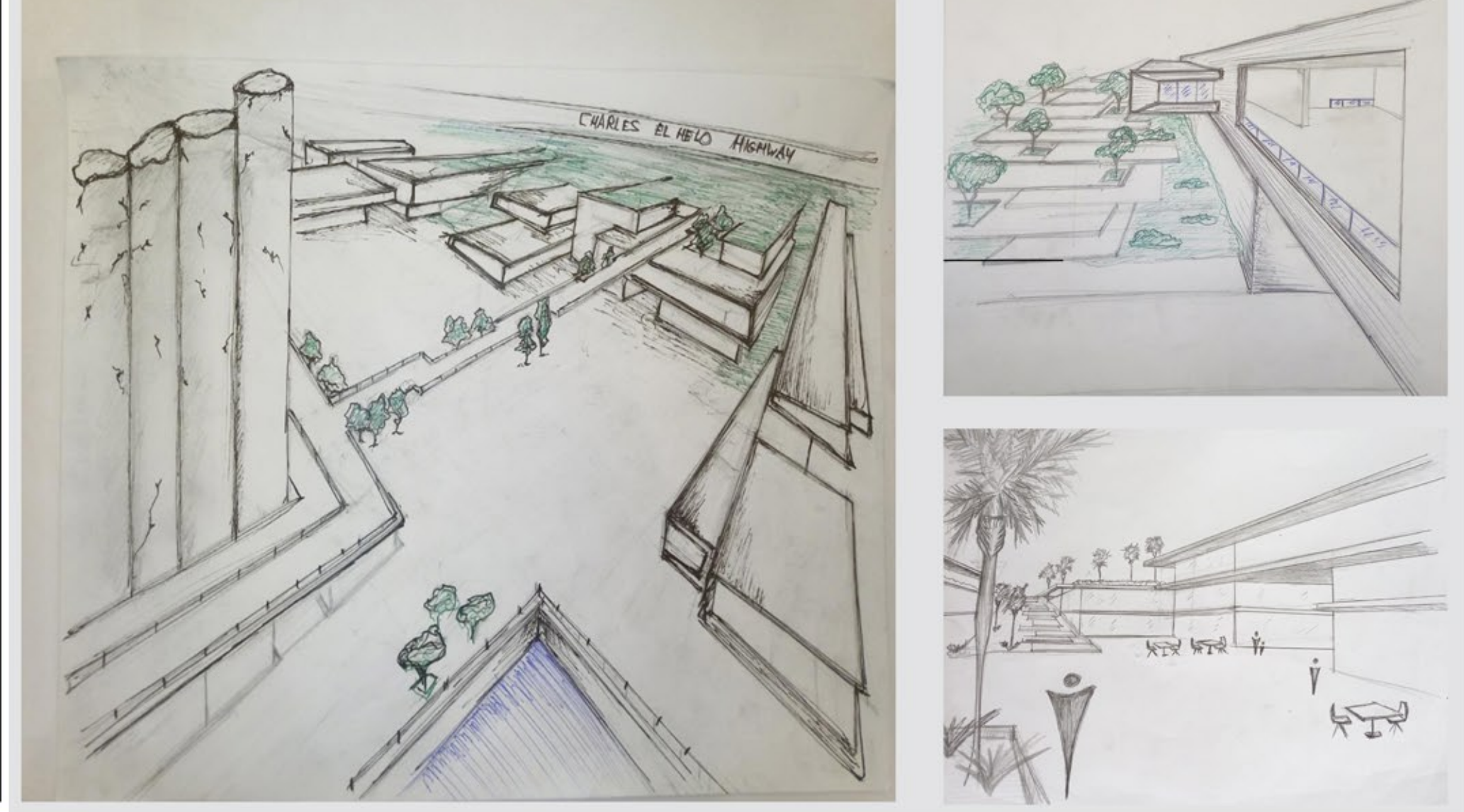
## IDEA DEVELOPMENT



**PURPOSE BEHIND THE PROJECT:**  
THE CONCEPT WAS BORN FROM THE LACK OF GREEN/PUBLIC SPACES IN BEIRUT AND THE PURPOSE OF REUNITING A DIVIDED BEIRUT. THE ACTION TAKEN WAS BY CONNECTING EXISTING GREEN SPACES AND FORMING A BELT THAT ENDS AT THE HEART OF PORT BEIRUT.

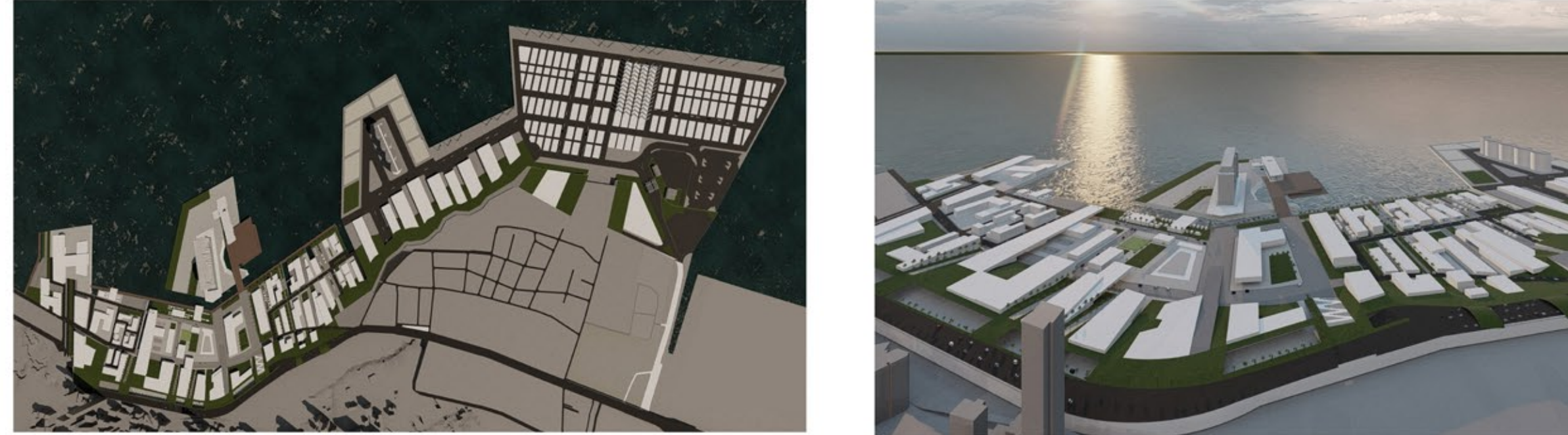


MEMORIAL AS AN ISLAND TO INCREASE THE IMPORTANCE OF THE DAMAGED SILOS, A MEMORIAL ISLAND WAS CREATED THAT APPEARS FLOATING AWAY FROM THE PROJECT YET BARELY ANCHORED TO THE PORT BY A FLOATING PLATFORM.



THE VOLUMES WERE DIRECTED TOWARD THE MEMORIAL IN A RECTANGULAR SHAPE APPEARING TO IMMERGE FROM WITHIN THE DOWNHILL CHARLES HELOU AND EXTENDING FROM WITHIN THE CITY, THUS LEADING THE MEMORIAL TO BE THE ONLY VERTICALLY ERECTED STRUCTURE TO EMPHASIZE AND MAGNIFY ITS IMPORTANCE AND MEANING BEHIND THE TRAGEDY

## MASS PLAN

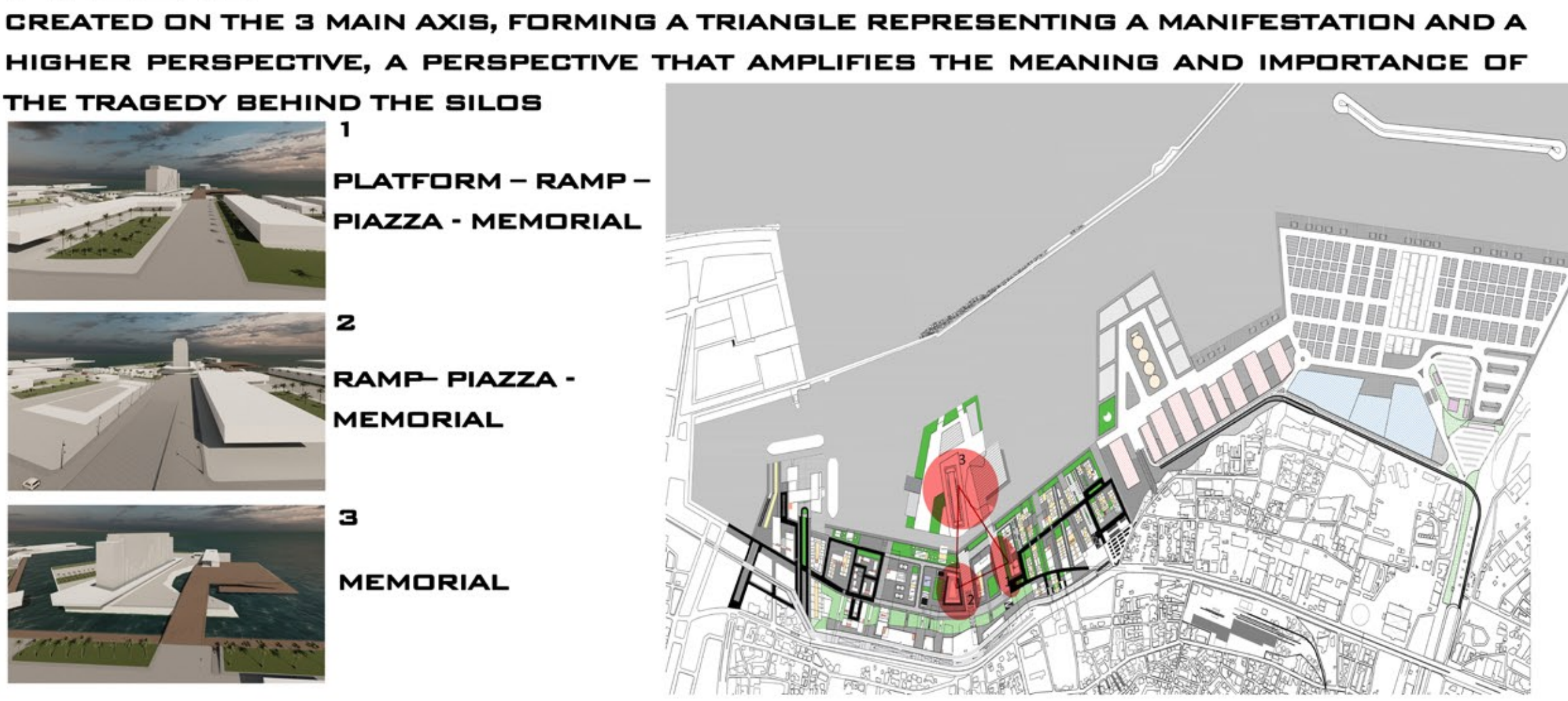


## GREEN SPACES



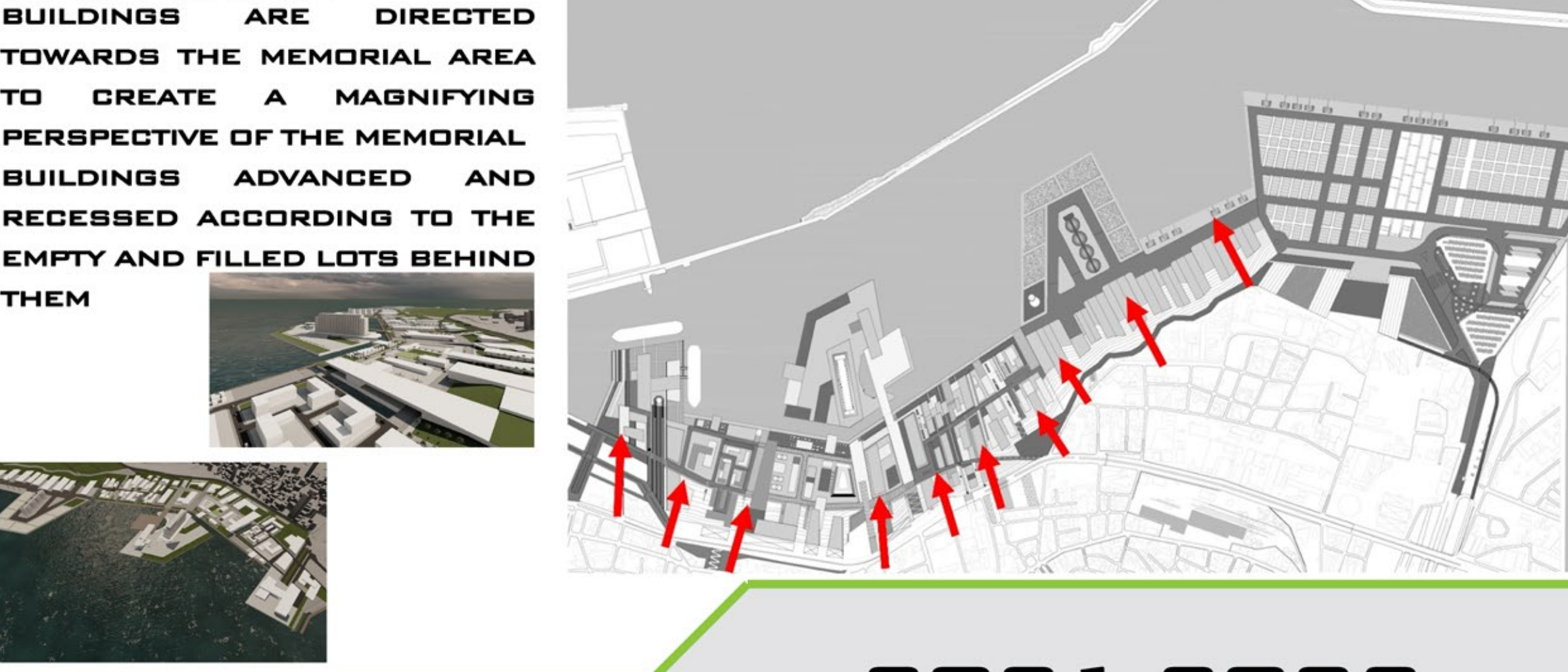
CREATING VISUAL TRANSPARENCY BETWEEN THE CITY AND THE PORT BY TURNING CHARLES HELOU FROM A BARRIER TO A MEANS OF CONNECTIVITY OF THE GREEN SPACES IN THE CITY WITH THE GREEN SPACES CREATED IN THE PORT

## PIAZZAS



CREATED ON THE 3 MAIN AXIS, FORMING A TRIANGLE REPRESENTING A MANIFESTATION AND A HIGHER PERSPECTIVE, A PERSPECTIVE THAT AMPLIFIES THE MEANING AND IMPORTANCE OF THE TRAGEDY BEHIND THE SILOS

## BUILDINGS



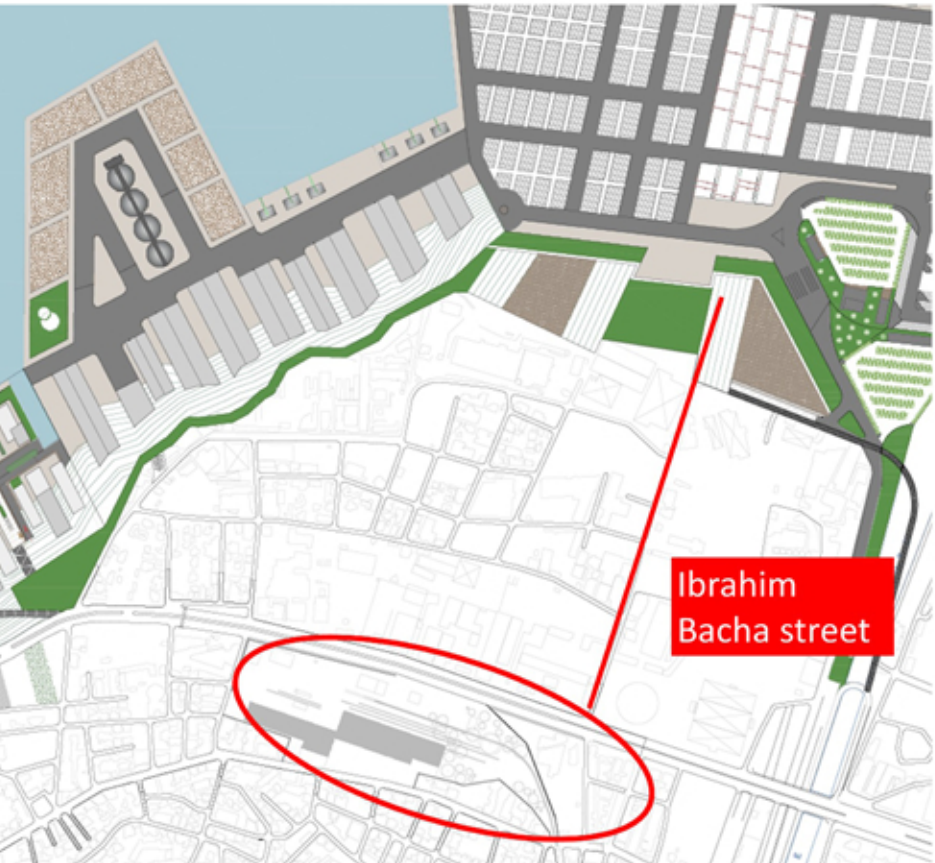
BUILDINGS ARE DIRECTED TOWARDS THE MEMORIAL AREA TO CREATE A MAGNIFYING PERSPECTIVE OF THE MEMORIAL BUILDINGS ADVANCED AND RECESSED ACCORDING TO THE EMPTY AND FILLED LOTS BEHIND THEM



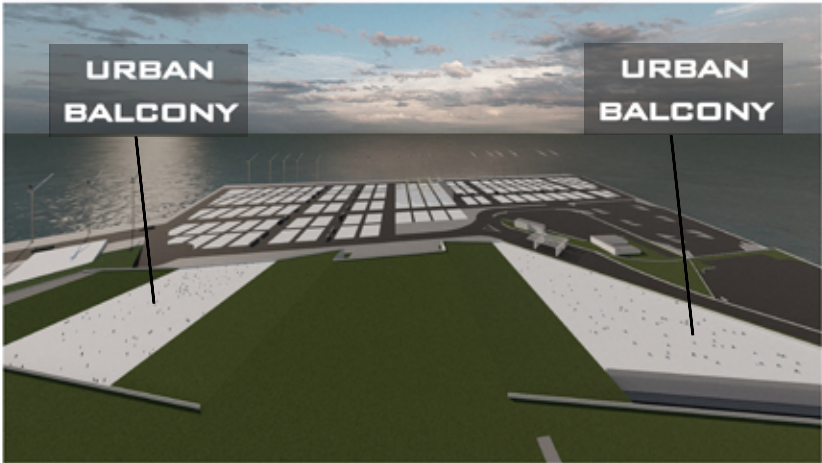
# PORT-CITY SUTURE

## PORT-CITY CONNECTIVITY

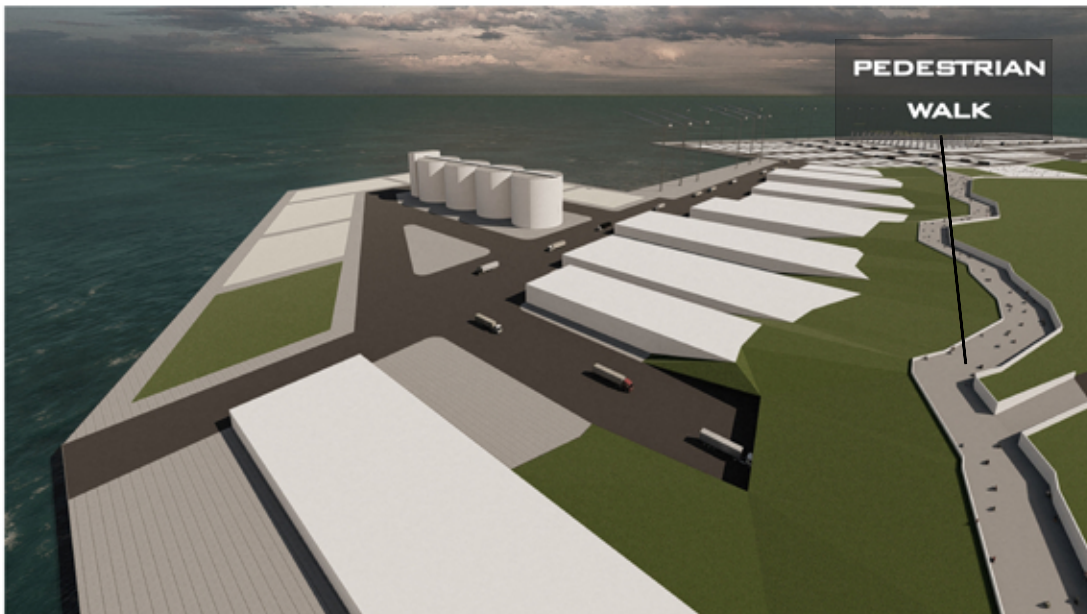
### KARANTINA



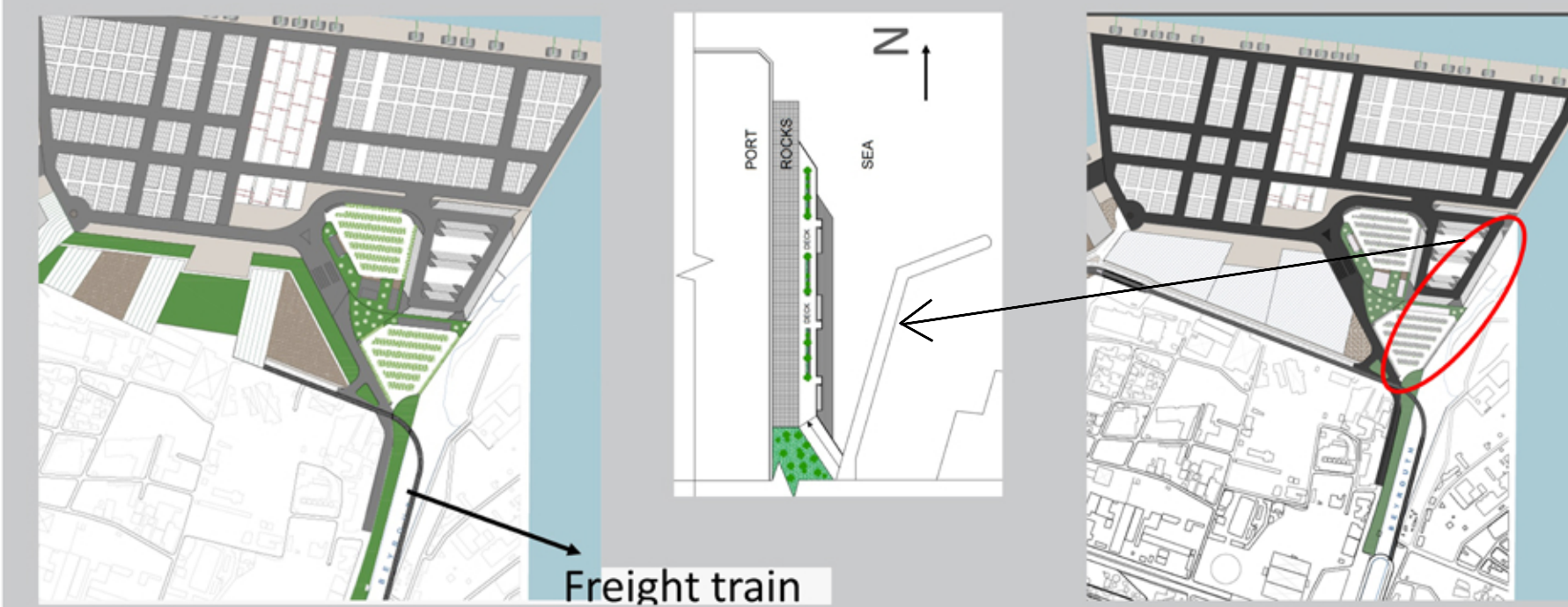
IBRAHIM BACHA STREET IS CONNECTING MAR MIKHAEL STATION TO THE URBAN BALCONY LOCATED AT THE PERIPHERY OF KARANTINA



2 URBAN BALCONIES CONNECTING THE PORT TO THE PERIPHERY OF KARANTINA THROUGH A PEDESTRIAN WALKWAY ALONG THE REGION



### CONTINUITY OF GREEN BELT FROM THE PORT TO NAHR BEIRUT

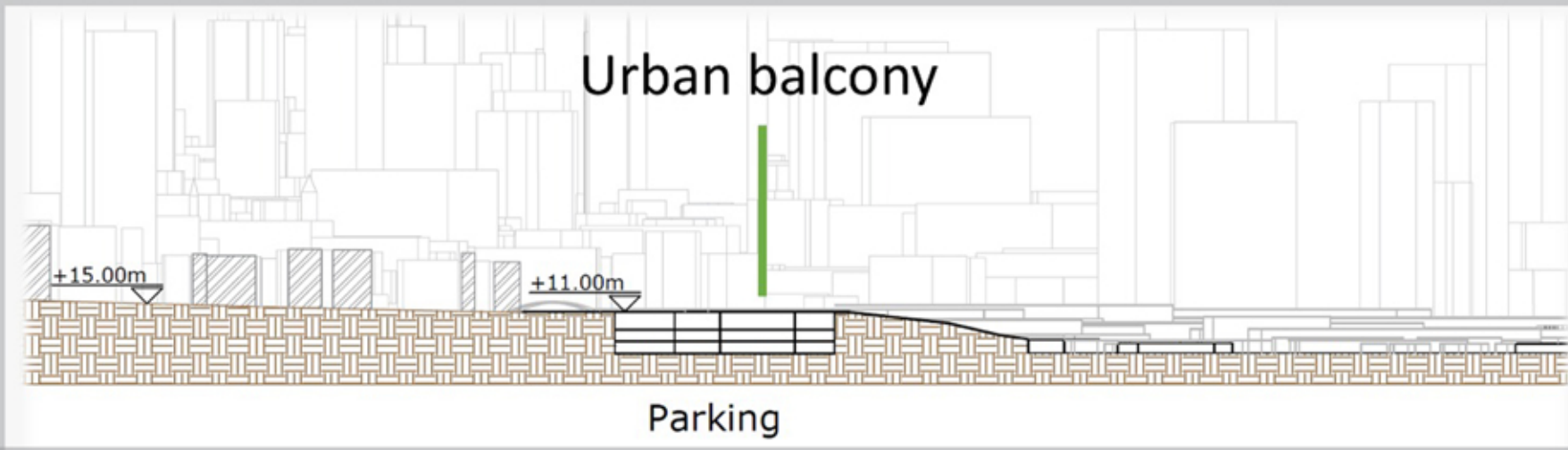


TO ENSURE THE CONTINUITY OF THE GREEN BELT, AN INTERVENTION HAD TO BE TAKEN ON NAHR BEIRUT.  
1- ON THE EXTREMITY OF NAHR BEIRUT, BESIDE THE PORT: BY CREATING A CORNICHE AND FISHER DECK  
2- ON THE BANKS OF NAHR BEIRUT, BETWEEN KARANTINA AND BOURJ HAMMOUD: INTRODUCTION OF GREENERY, PEDESTRIAN BRIDGES AND CYCLING PATHS  
3- ABOVE NAHR BEIRUT: FREIGHT RAILWAY CONNECTING THE PORT TO DAMASCUS

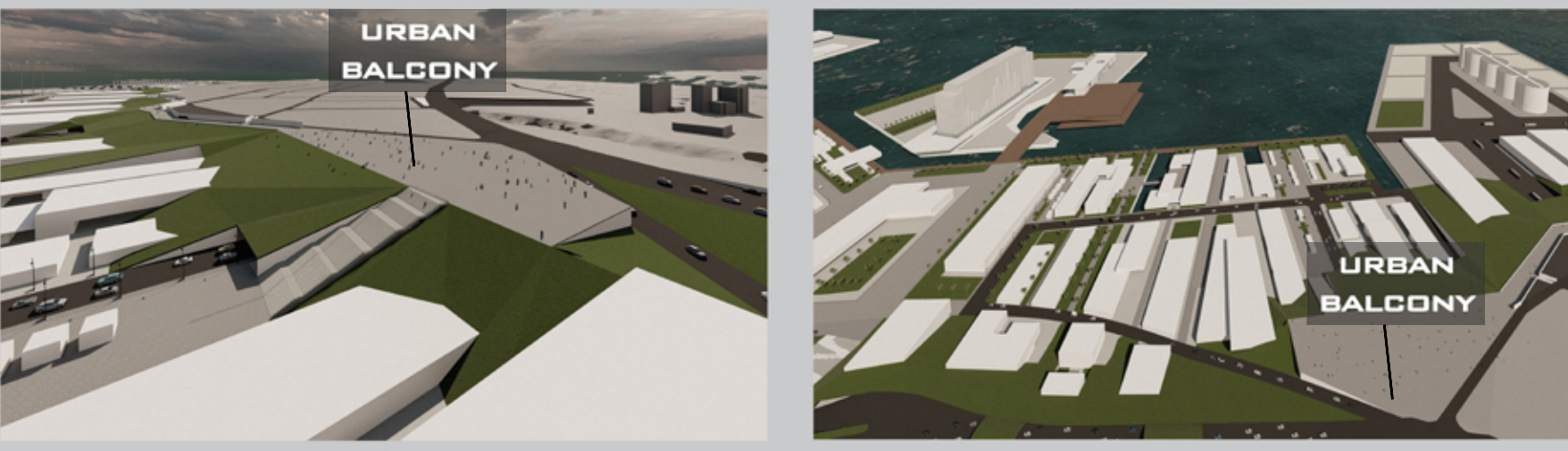


### URBAN BALCONIES

THE CREATION OF THIS URBAN BALCONY GAVE THE OPPORTUNITY TO PRESENT PUBLIC SPACE TO AN ESSENTIAL ZONE SUCH AS KARANTINA DUE TO THE LACK OF PUBLIC GREEN PEDESTRIAN ZONES... IN THIS AREA.

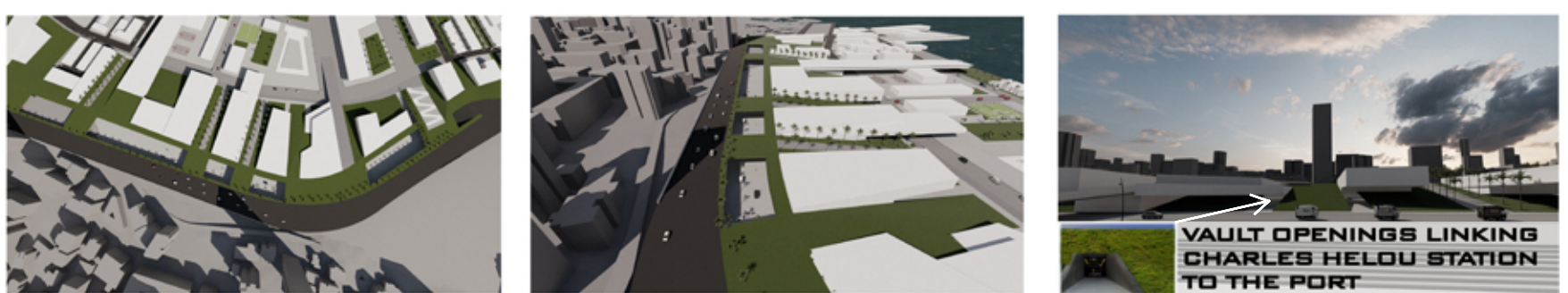
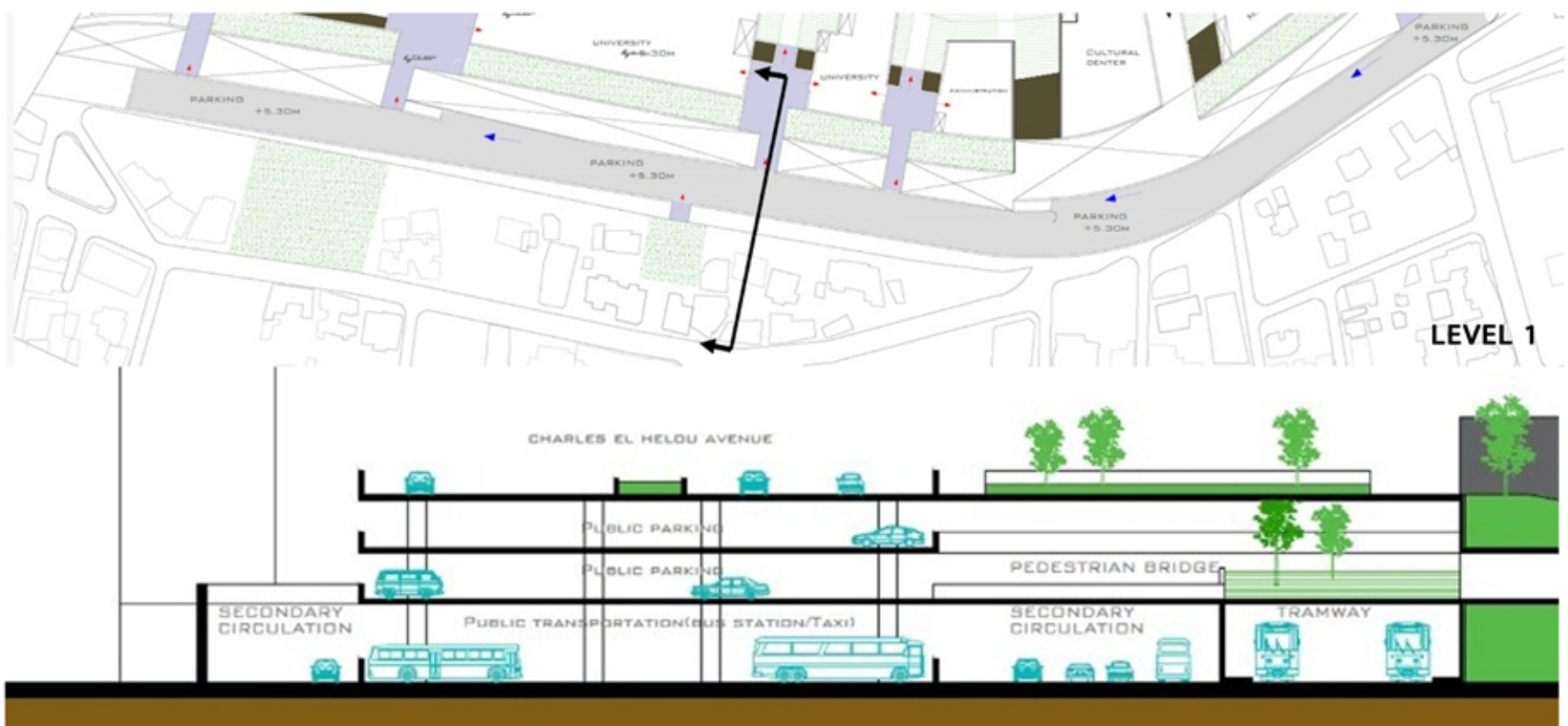


THIS URBAN BALCONY ENSURES THE CONTINUITY OF GREEN BELT EXTENDING ALONG THE PORT AND CONTINUING THROUGHOUT BEIRUT

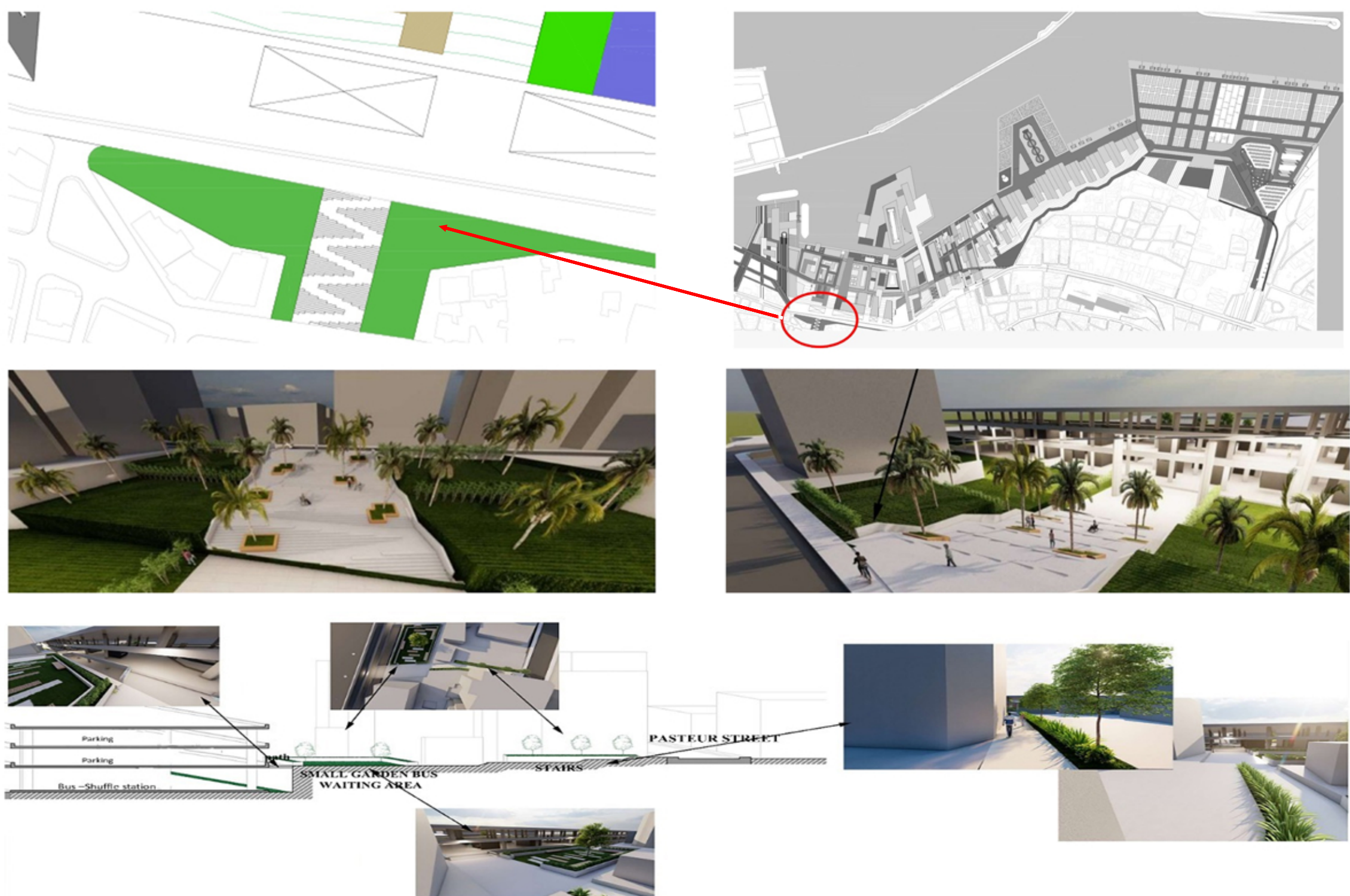


### CHARLES HELOU STATION

REDEVELOPMENT OF CHARLES HELOU HIGHWAY INTO AN AVENUE WITH A PEDESTRIAN WALKWAY AND VOIDS TO THE LOWER LEVEL OF THE HIGHWAY



### EXTENSION OF GREENERY BEHIND CHARLES HELOU STATION



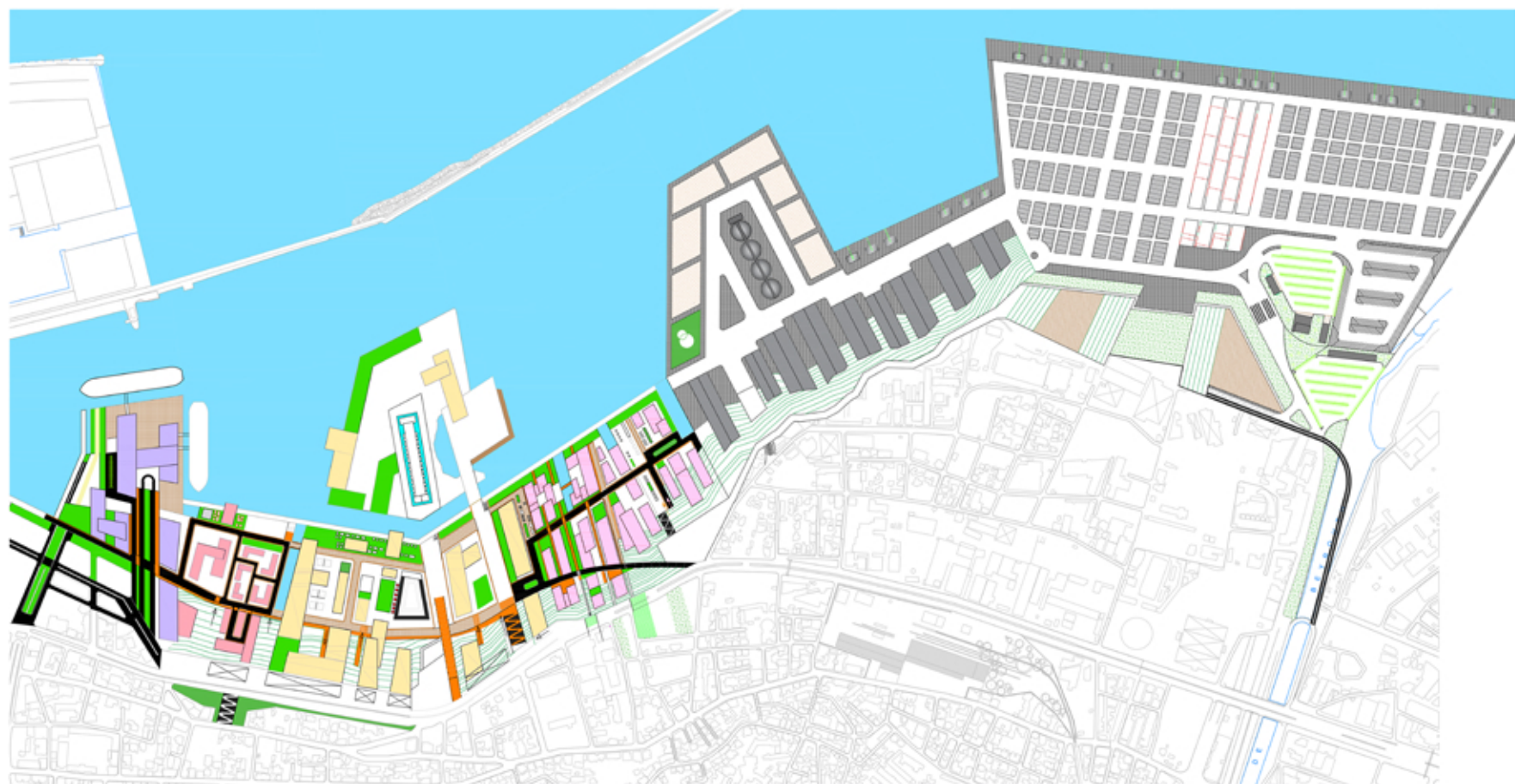
### THE FIRST BASIN

THE FIRST BASIN IS BEING USED AS AN OUTDOOR EXHIBITION FOR ARCHEOLOGICAL BOATS UNDER AND UPPER GROUND IN FRONT OF THE DOWNTOWN ARCHEOLOGICAL SITE



### FUNCTIONS IN THE PORT

- CRUISE TERMINAL  
MARITIME MUSEUM  
DUTY FREE
- HOTELS  
RESIDENCES  
OFFICES
- CULTURAL  
FUNCTIONS
- SOUKS  
TRADE  
SERVICE CENTERS  
FIRE STATION
- CONTAINERS  
WAREHOUSES





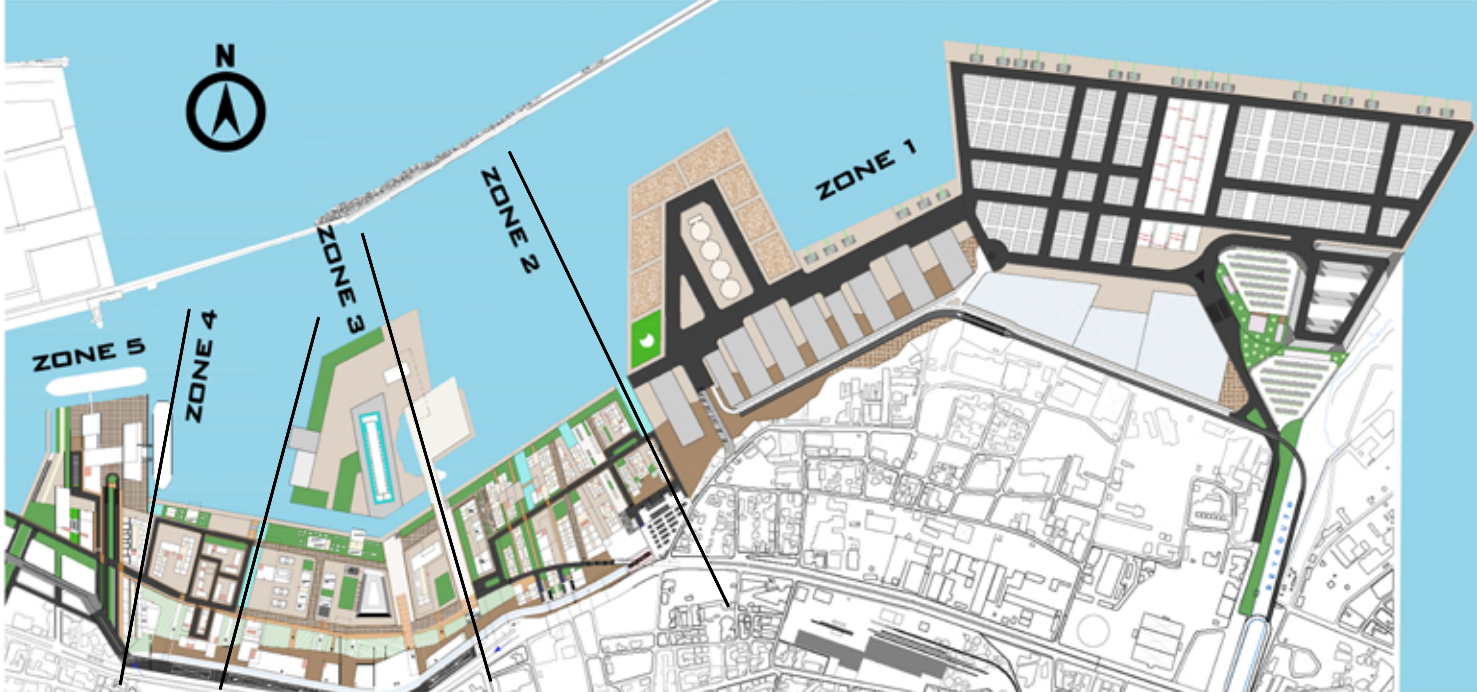
# PORT-CITY SUTURE

## THE PORT

### GROUND FLOOR

INTRODUCTION OF A CONTROLLED CIRCULATION OF VEHICLES.

THE MAIN CIRCULATION IS FOR ELECTRIC SHUTTLES, BIKE LANES AND PEDESTRIAN.



VEHICLES WITH LOW SPEED WITH RESPECT TO THE PEDESTRIAN CIRCULATION

SHUTTLES ONLY IN THE CULTURAL ZONE

PEDESTRIAN - BIKE LANE ALL ALONG THE ROADS IN THE PROJECT

VEHICLES WITH LOW SPEED WITH RESPECT TO THE PEDESTRIAN CIRCULATION

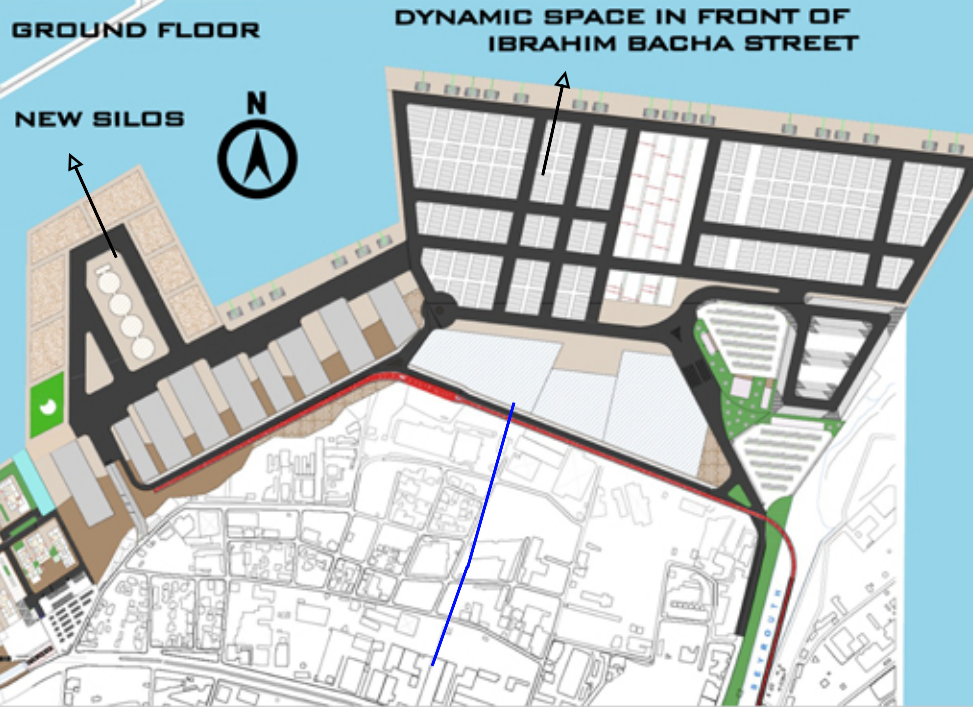
INDUSTRIAL ROADS FOR TRUCKS AND CARS

#### LEGEND:

- PEDESTRIAN
- ROAD-CONTROLLED
- ROAD FOR SERVICE SHUTTLES
- PIAZZA



### ZONE 1: INDUSTRIAL PORT

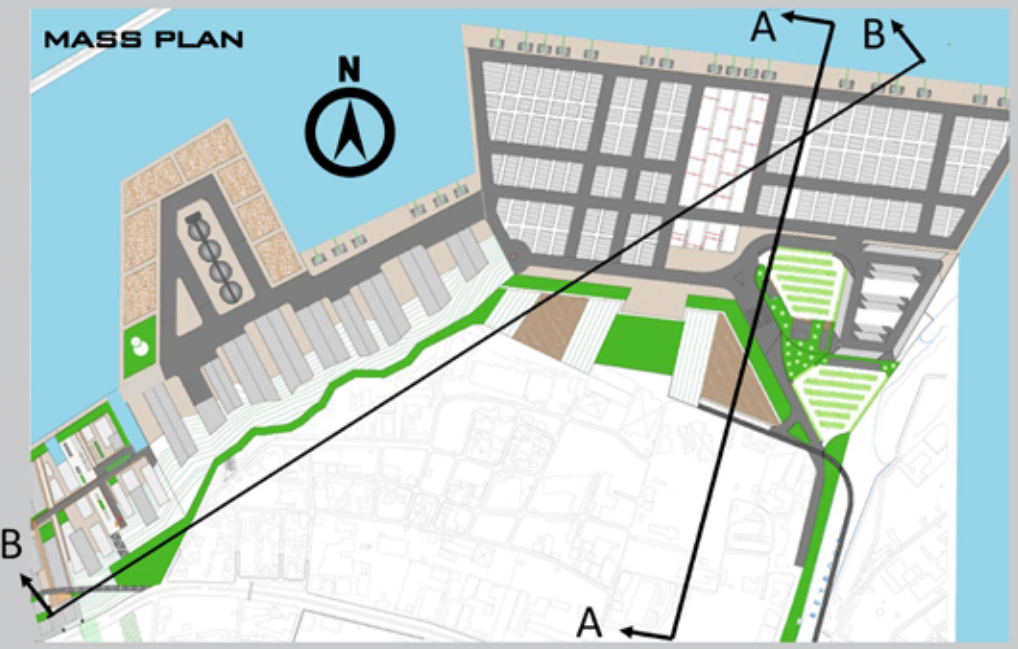
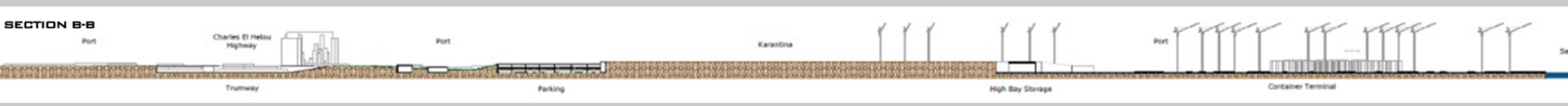
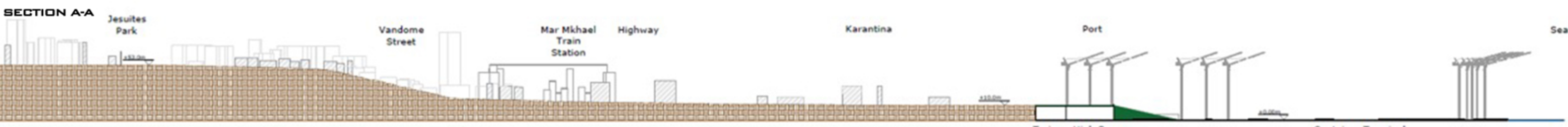
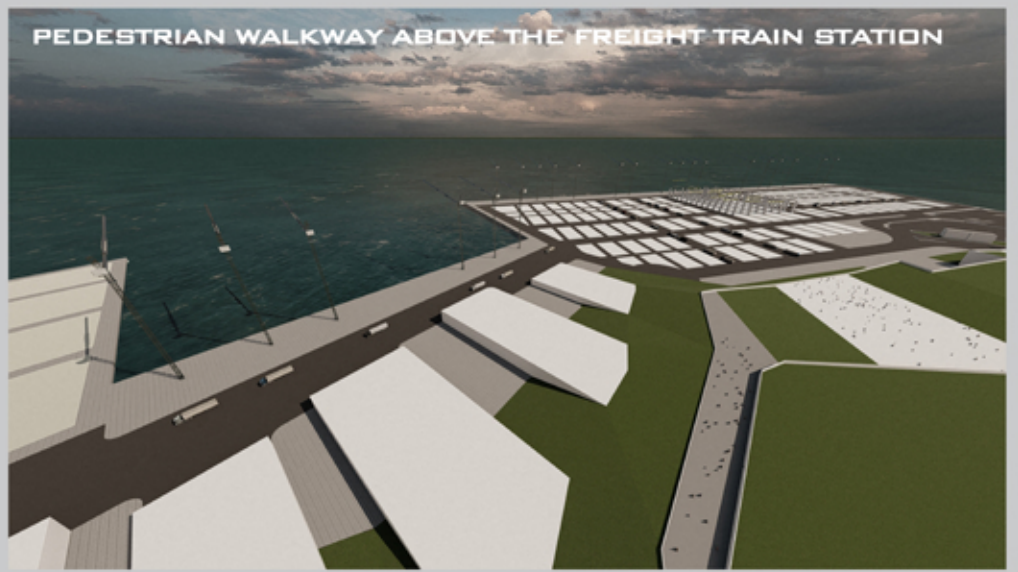
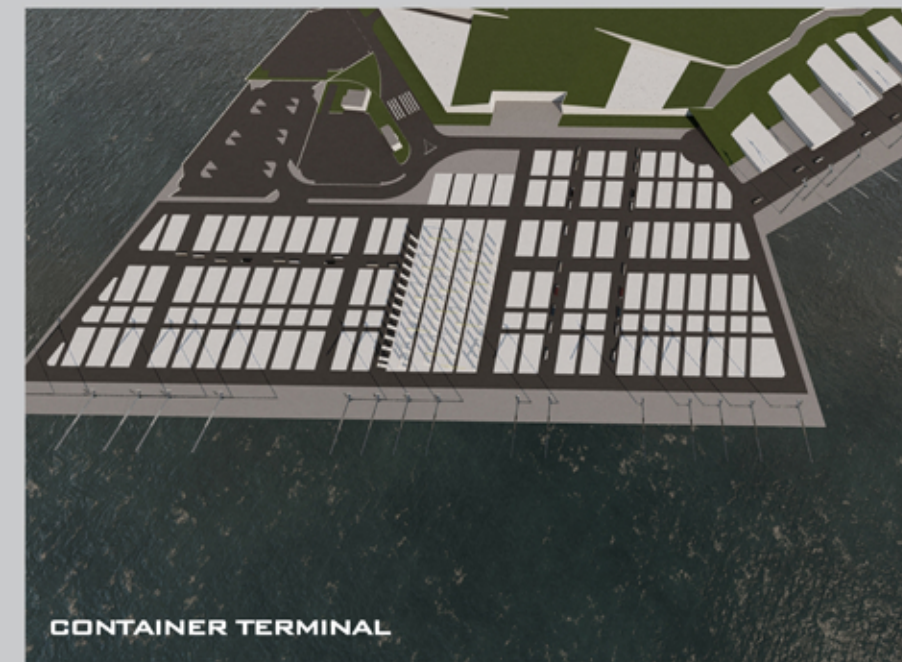
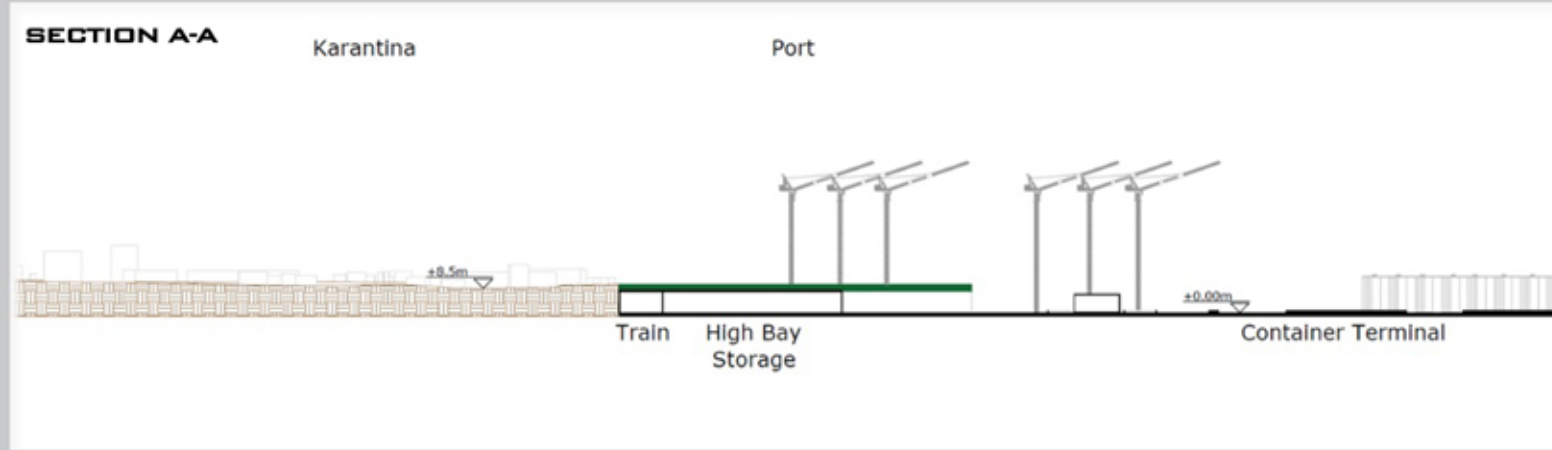
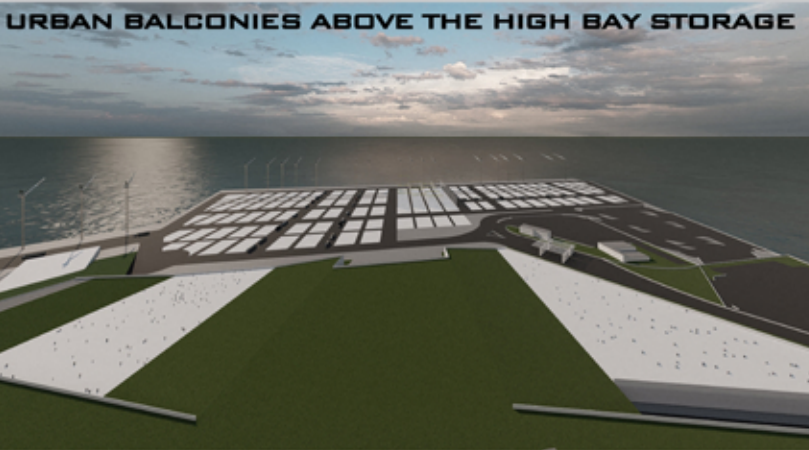
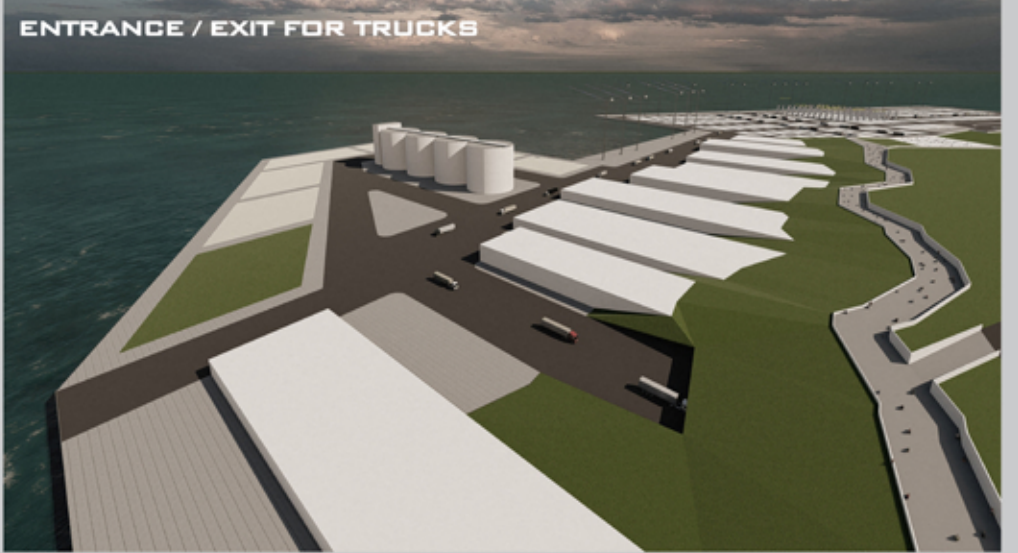
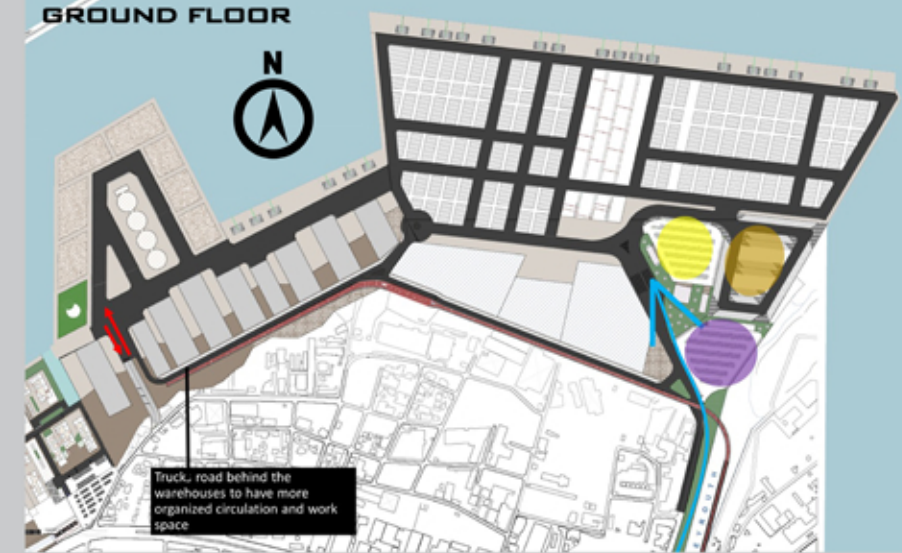


#### LEGEND (FUNCTIONS):

- WAREHOUSES
- SLAB FOR WORKERS TO STAND ON BULK TERMINAL
- HIGH BAY STORAGE
- CONTAINERS
- ADMINISTRATION
- FISH MARKET
- ROAD FOR TRUCKS AND CARS
- FREIGHT TRAIN STATION
- RAMP FOR TRUCKS FROM THE PORT TO CHARLES HELOU HIGHWAY

#### LEGEND

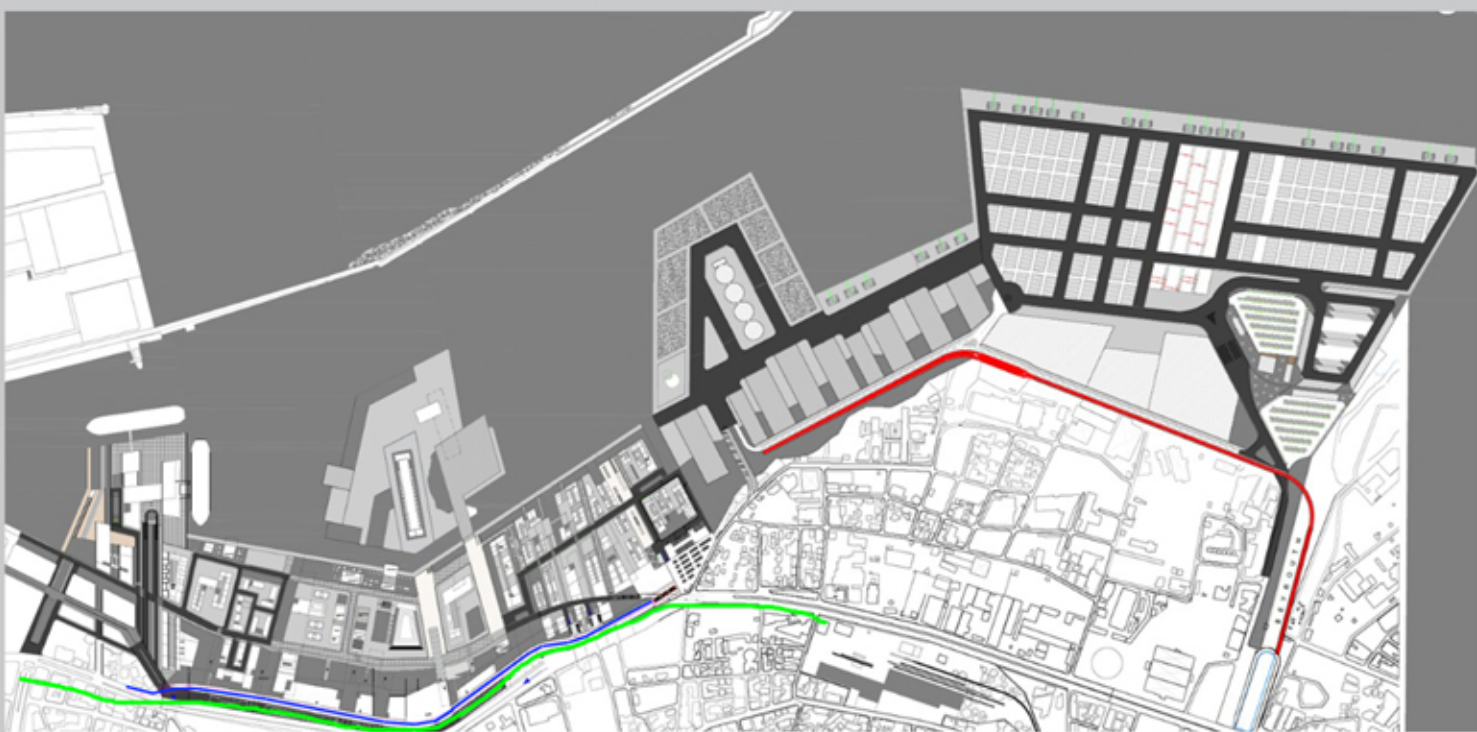
- TRUCKS AND CARS ENTRANCE
- FREIGHT TRAIN CIRCULATION
- ENTRANCE/EXIT 2 FOR TRUCKS
- ADMINISTRATION'S PARKING
- TRUCKS PARKING
- FISH MARKET'S PARKING



### TRAIN AND TRAMWAY

TRAMWAY FOR PUBLIC TRANSPORTATION

FREIGHT TRAIN STATION FOR CARGO TRANSPORTATION

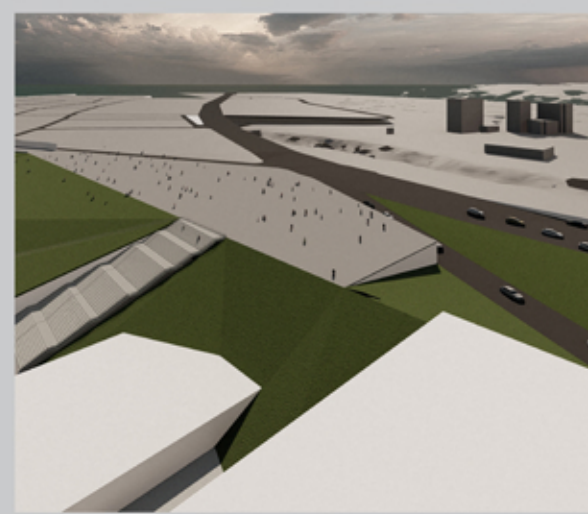


FREIGHT TRAIN STATION FOR CARGO TRANSPORTATION

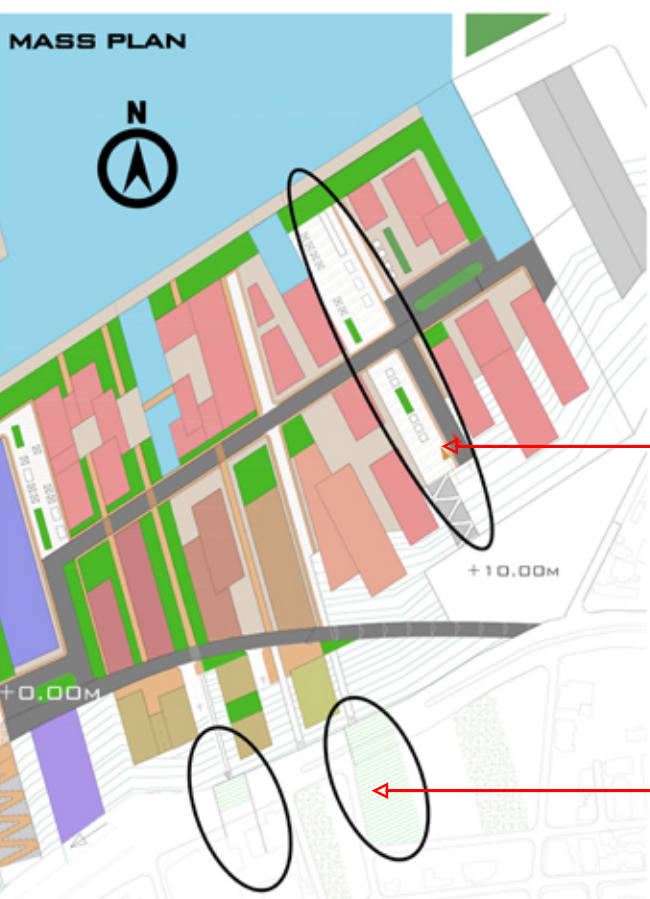
TRAMWAY FOR PUBLIC TRANSPORTATION

MAR MIKHAEL STATION IS REHABILITATED AND USED AS A SUBWAY STATION CONNECTED TO THE PORT THROUGH A STOP NEXT TO THE TRAMWAY STATION UNDER THE

#### URBAN BALCONY

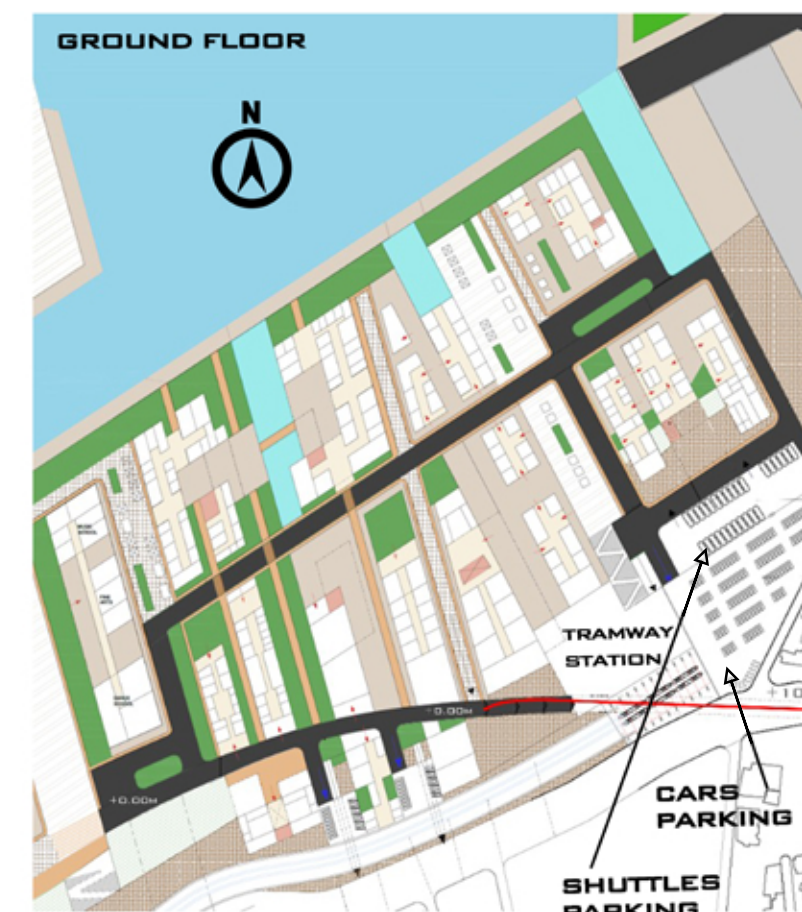
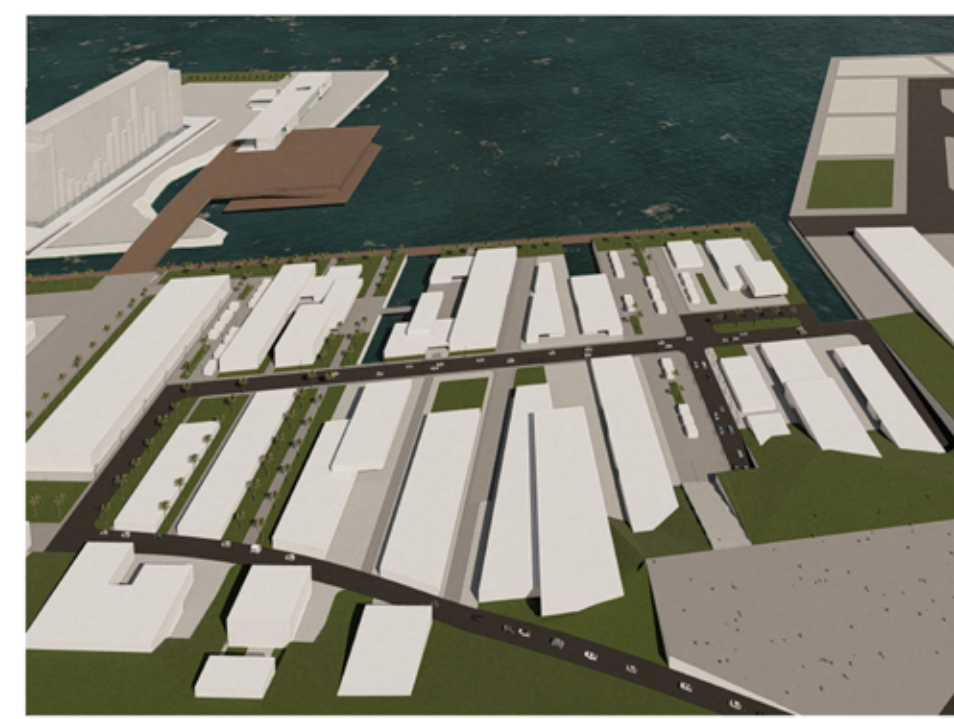
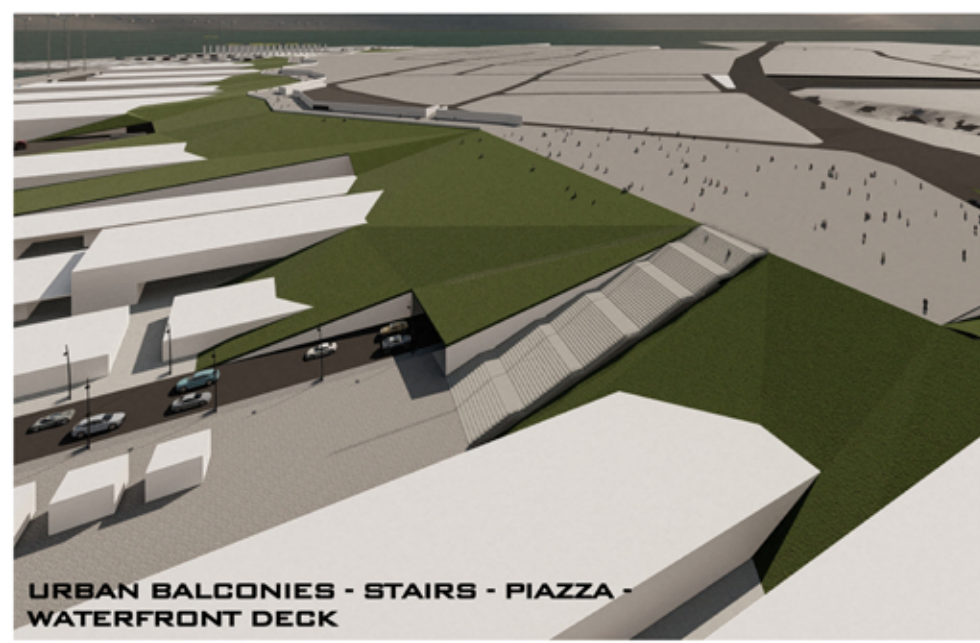
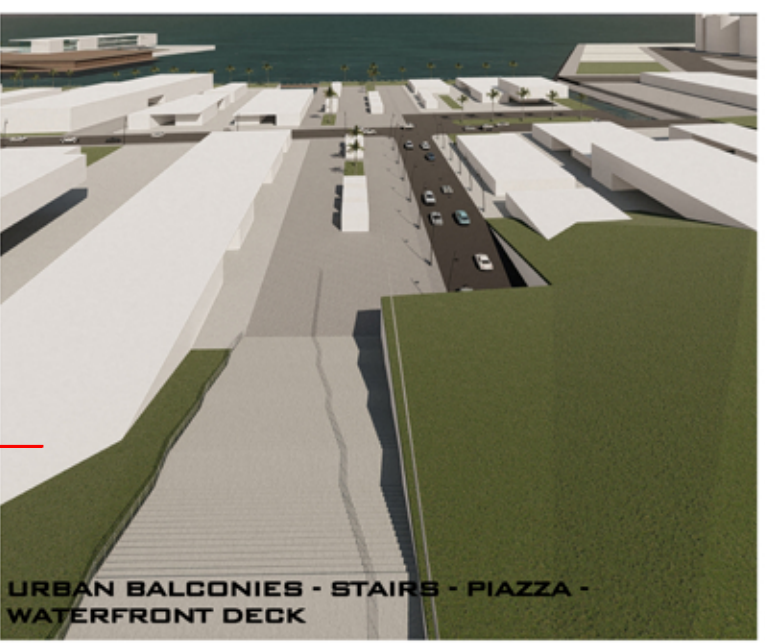


### ZONE 2: COMMERCIAL-HEALTHCARE-SERVICES ZONE



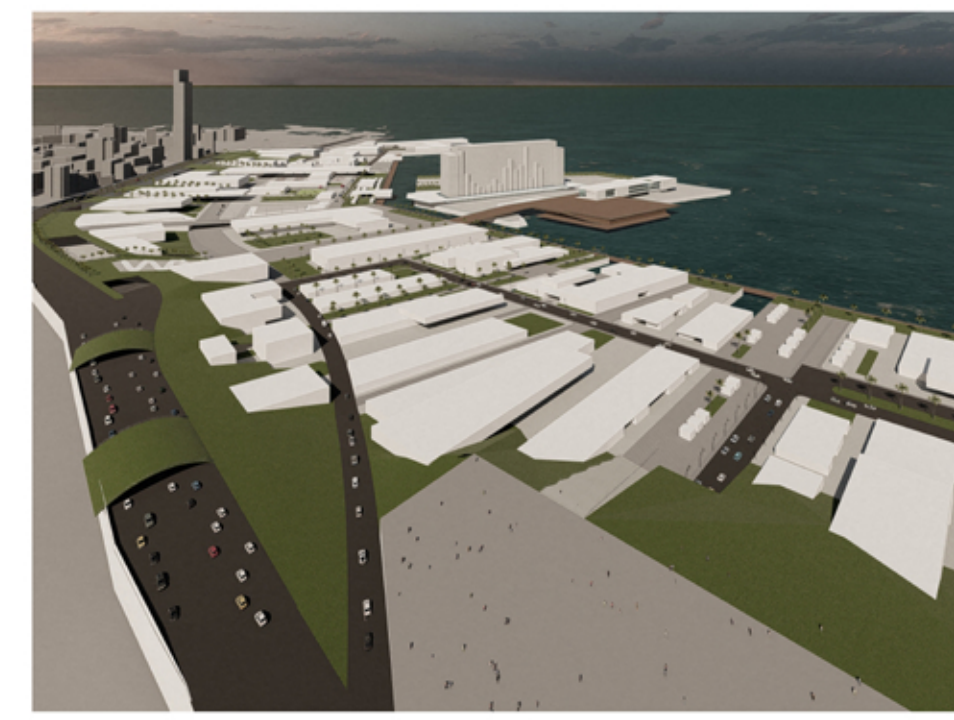
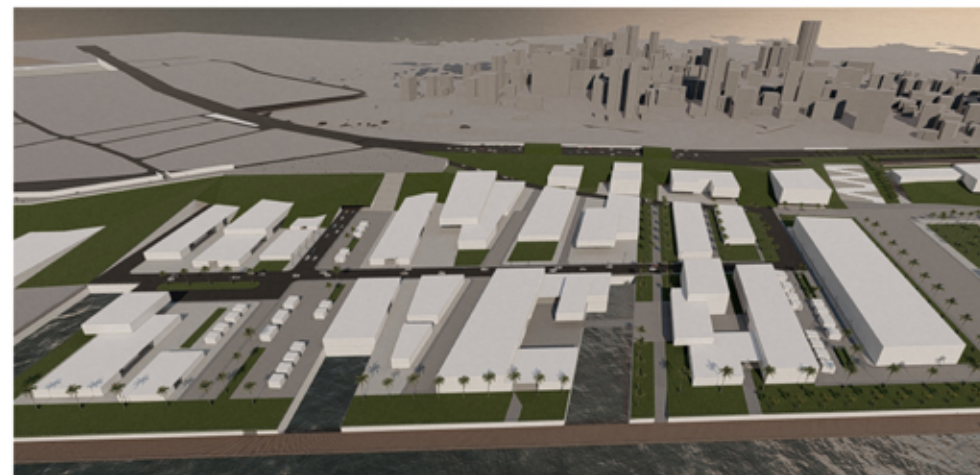
#### LEGEND

- SOUKS-COFFEE SHOPS
- CINEMA
- HEALTHCARE CENTER
- SERVICES CENTER
- FIRE STATION
- NEWS CENTER
- TRADE CENTERS



#### LEGEND

- ENTRANCE FOR THE PARKING
- ENTRANCE FOR TRAMWAY STATION
- ENTRANCE OF CARS FROM CHARLES HELOU HIGHWAY TO THIS ZONE
- ENTRANCE FOR BUILDINGS
- VERTICAL CIRCULATION IN BUILDINGS
- PEDESTRIAN WALKWAYS
- CONTROLLED ROAD
- SHUTTLE ROAD



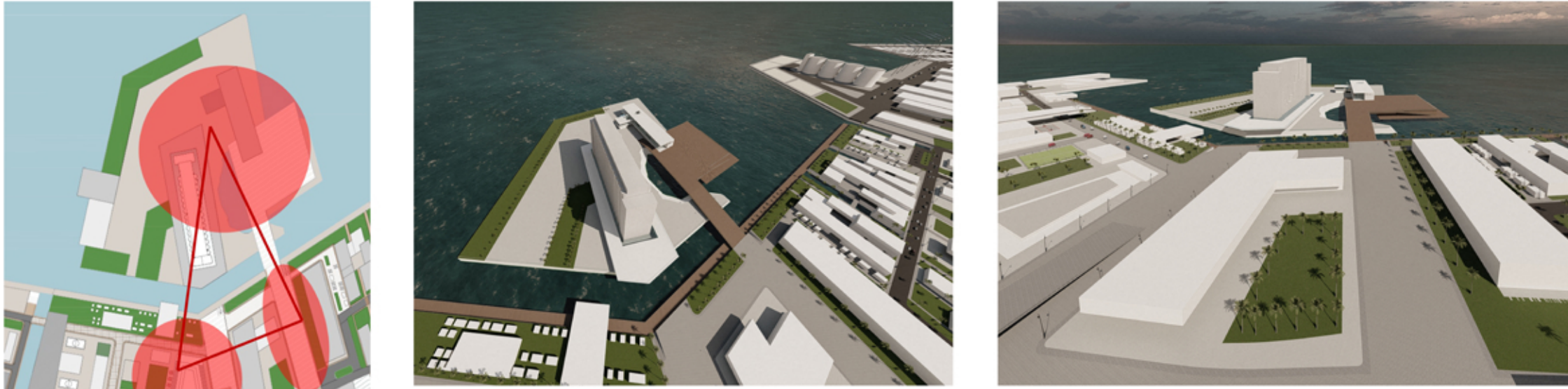


# PORT-CITY SUTURE

## THE ZONES

### ZONE 3: A) CULTURAL ZONE

BEING A ZONE OF CLARITY, PERSPECTIVE, COMPREHENSIBILITY, INTELLIGIBILITY, EXPLICITNESS, TRANSPARENCY AND TRANSLUCENCE,... CULTURAL FUNCTIONS WERE DECIDED TO PUT WITHIN THE VOLUMES EMBRACING THE MEMORIAL ZONE



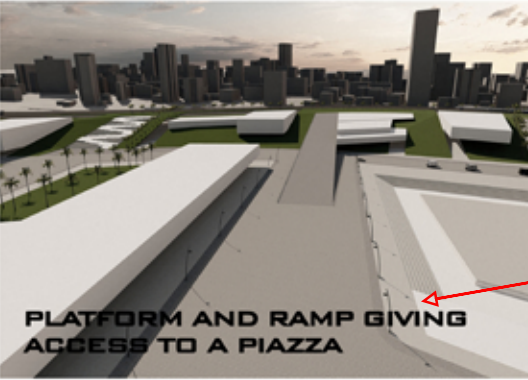
3 PIAZZAS ARE CONNECCTING THE MEMORIAL TO THE CULTURAL ZONE AND CREATING AN IMPORTANT PUBLIC SPACE

2 MAIN BLOCS DIRECTED TOWARD THE DAMAGED SILOS EXTENDING FROM WITHIN THE "COULÉE VERTE". THEIR UNIQUE LENGTHS EMBRACE THE MEMORIAL ZONE, SPECIFY IT AND CREATE TO MAIN PIAZZAS WITHIN THE ZONE

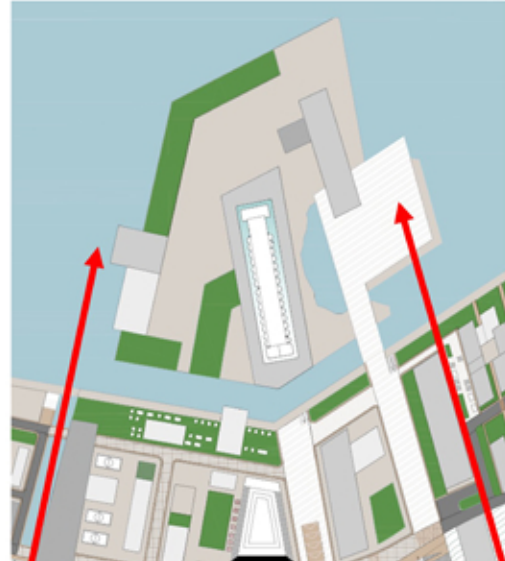
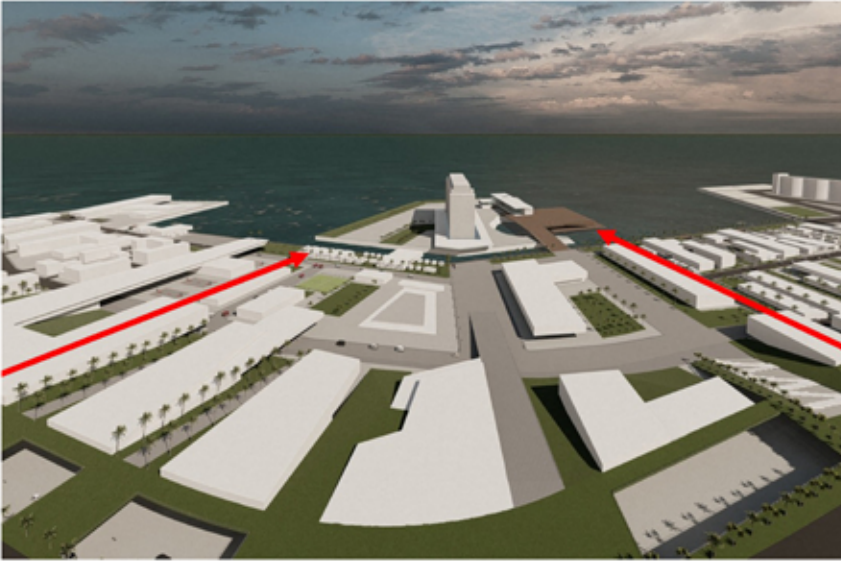


LEGEND

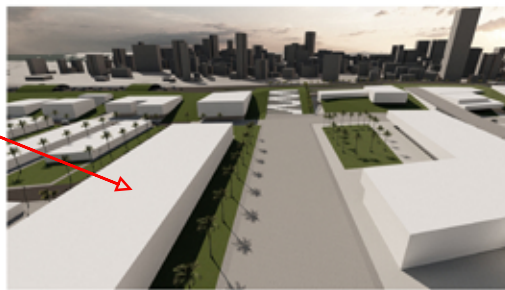
- LEBANESE UNIVERSITY
- RESEARCH CENTER
- RESTAURANTS
- THEATERS
- MINISTRY OF CULTURE
- ADMINISTRATION FOR THIS ZONE
- CULTURAL CENTER
- NATIONAL LIBRARY
- ART SCHOOL
- MUSEUM AROUND THE SILOS



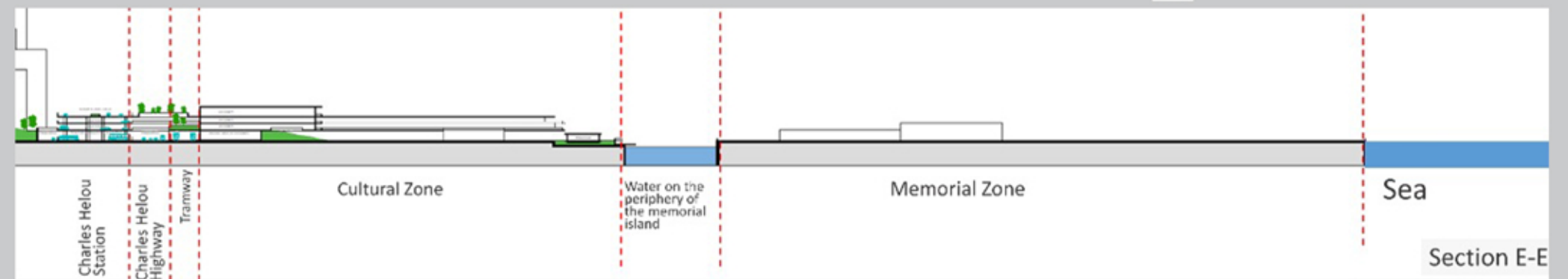
PLATFORM AND RAMP GIVING ACCESS TO A PIAZZA



STAIRS ON THE AXIS OF EDL GIVING ACCESS TO THE PLATFORM IN FRONT OF THE



### ZONE 4: HOTELS-RESIDENCE-OFFICES



CHARLES HELOU HIGHWAY UNDER THE STATION IS REDEVELOPED INTO AN AVENUE WITH PEDESTRIAN BRIDGES FROM THE STATION TO THE PORT

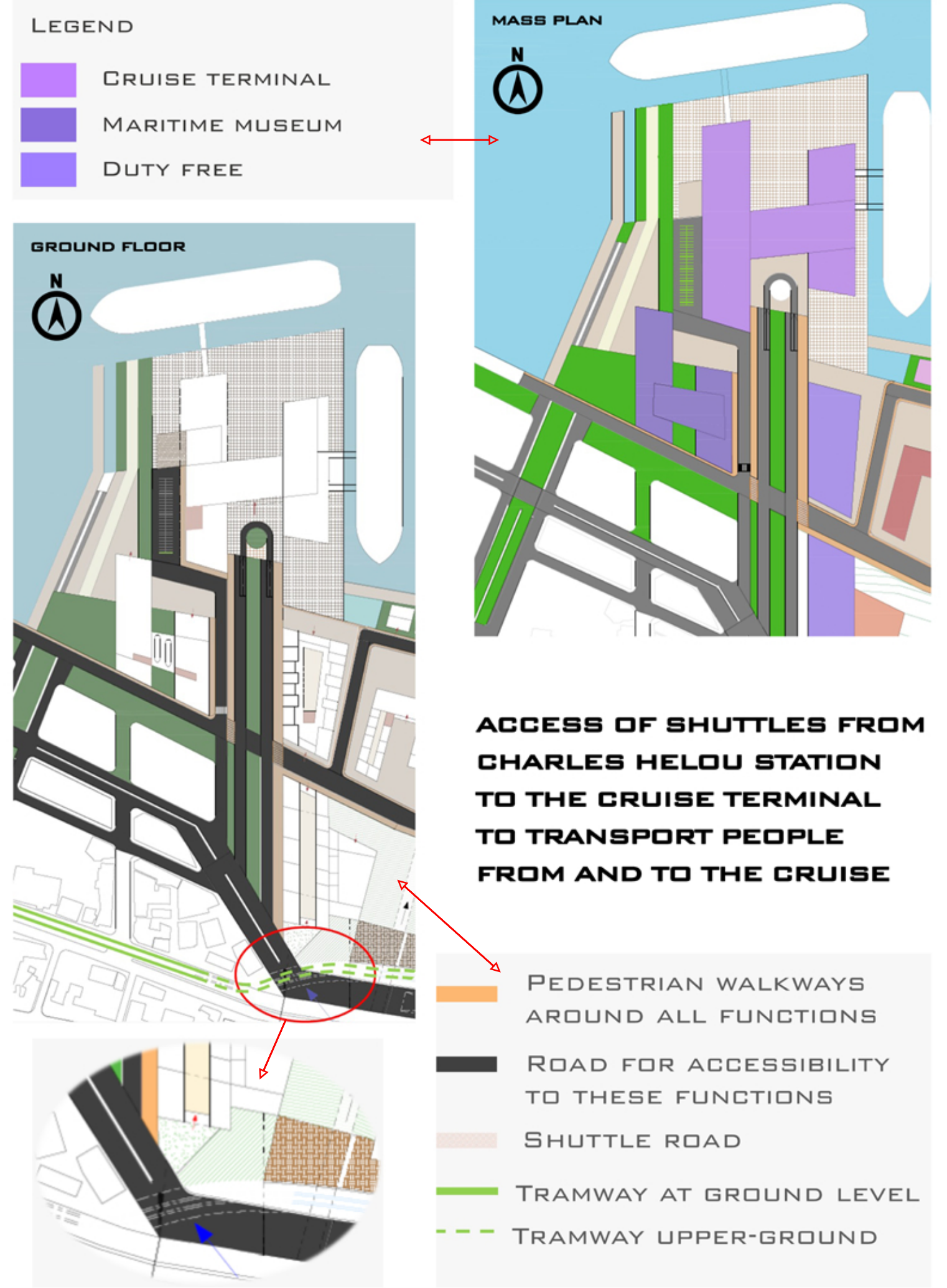
LEGEND

- PARKING FOR SHUTTLES THAT HAVE ACCESS TO THE CRUISE TERMINAL
- CONTROLLED ROAD AROUND THE FUNCTIONS IN THIS ZONE
- VERTICAL CIRCULATION IN THE BUILDING
- PEDESTRIAN WALKWAYS AROUND ALL FUNCTIONS
- SHUTTLE ROAD AFTER THIS ZONE



### ZONE 5 : CRUISE TERMINAL MARITIME MUSEUM DUTY FREE ZONE

DUE TO THE LOCATION OF THIS BASIN NEAR TO THE ARCHEOLOGICAL SITES AND CITY DISTRICT, THIS PRESENTED A PERFECT LOT TO CREATE A MARITIME MUSEUM THE CRUISE TERMINAL IS LOCATED BETWEEN THE FIRST AND SECOND BASIN BECAUSE THE WATER IS DEEPER IN THIS ZONE



ACCESS OF SHUTTLES FROM CHARLES HELOU STATION TO THE CRUISE TERMINAL TO TRANSPORT PEOPLE FROM AND TO THE CRUISE

LEGEND

- PEDESTRIAN WALKWAYS AROUND ALL FUNCTIONS
- ROAD FOR ACCESSIBILITY TO THESE FUNCTIONS
- SHUTTLE ROAD
- TRAMWAY AT GROUND LEVEL
- TRAMWAY UPPER-GROUND

### ZONE 3: B) MEMORIAL



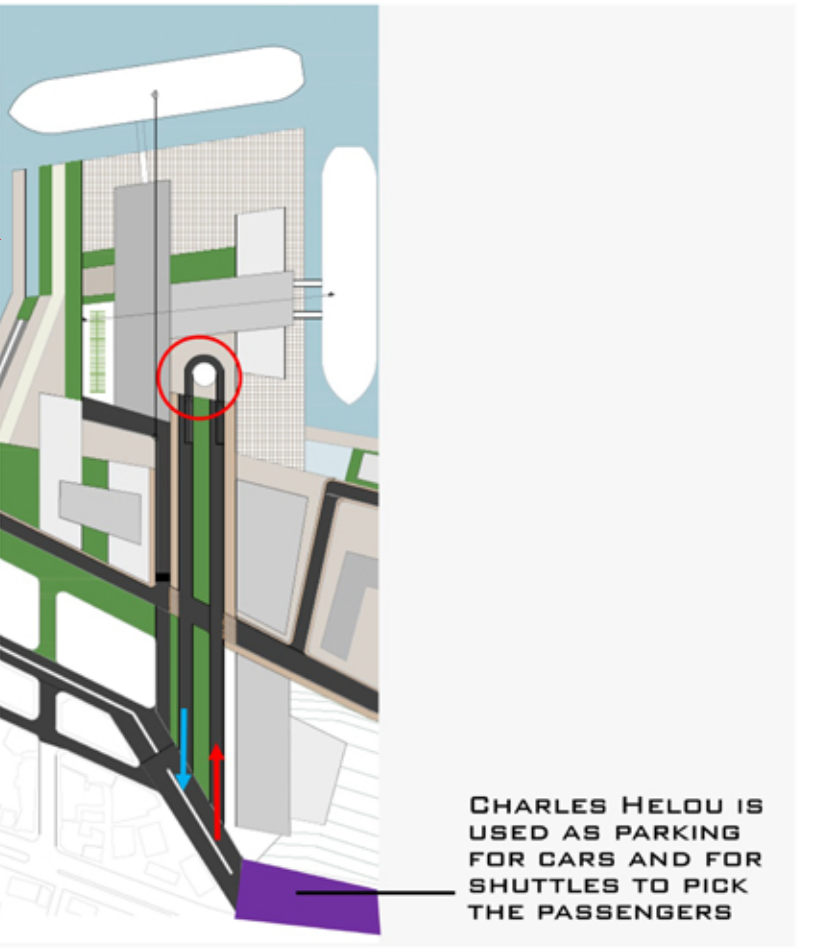
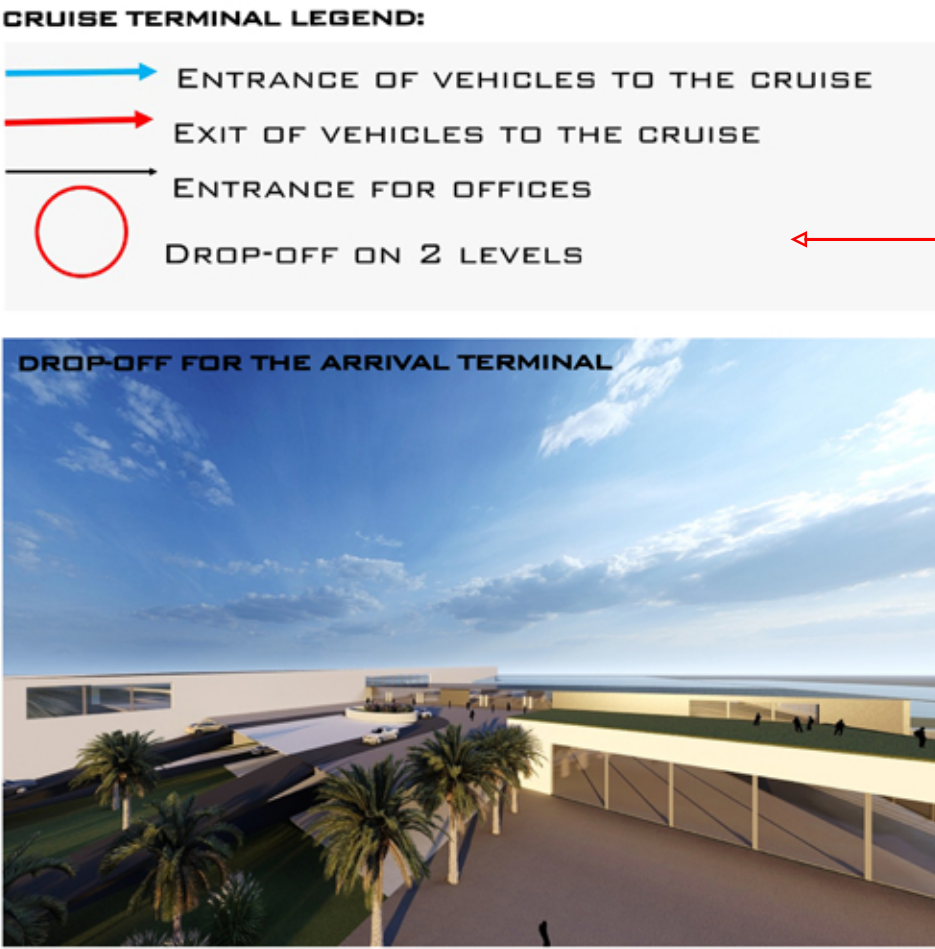
THE CONCEPT BEHIND THIS PARTICULAR ZONE WAS TO CREATE AN ETERNAL MEMORIAL OF THE TRAGIC BEIRUT BLAST, BY MAGNIFYING THE IMPORTANCE OF THE SILOS THAT PROTECTED PART OF BEIRUT. THE TWO MAIN PIAZZAS IN THE PORT END WITH THIS ZONE AS ITS MOST IMPORTANT VERTEX PIAZZA.

INTRODUCTION:

A MEMORIAL ISLAND WAS CREATED TO GIVE THE SILOS MORE SOLITUDE AND IMPORTANCE, THE ISLAND APPEARS TO BARELY FLOAT AWAY FROM THE PORT YET ANCHORED AT ITS RIGHT CORNER BY A FLOATING PLATFORM THAT PRESENTS ITS ONLY ACCESS, THUS LEAVING CURIOSITY TO FOLLOW IN THE HEAD OF THE VISITOR, THE URGE TO DISCOVER THE ISLAND...

THE MEMORIAL MUSEUM SERVES AS AN ETERNAL MEMORY, ONE THAT HUGS THE SILOS, ITS PLATFORM ACTS AS AN ANCHOR TO WHAT WAS NEARLY LOST, AND AN OPPORTUNITY TO OBSERVE THE REMAINS OF THE TRAGIC INCIDENT...

THE EXTERNAL L- SHAPED VOLUME APPEARS TO CARRESS THE SILOS AND EXTENDS WITH THE DIRECT AXE OF THE PLATFORM AS A SINGLE ENTITY, AND SERVES AS AN ENCLOSED MUSEUM GALLERY FOR THE ISLAND.



CHARLES HELOU IS USED AS PARKING FOR CARS AND FOR SHUTTLES TO PICK THE PASSENGERS