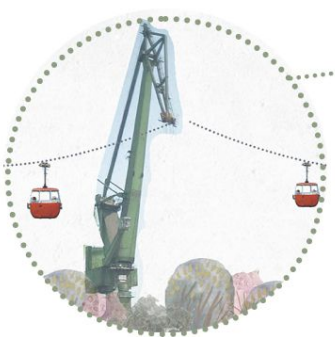
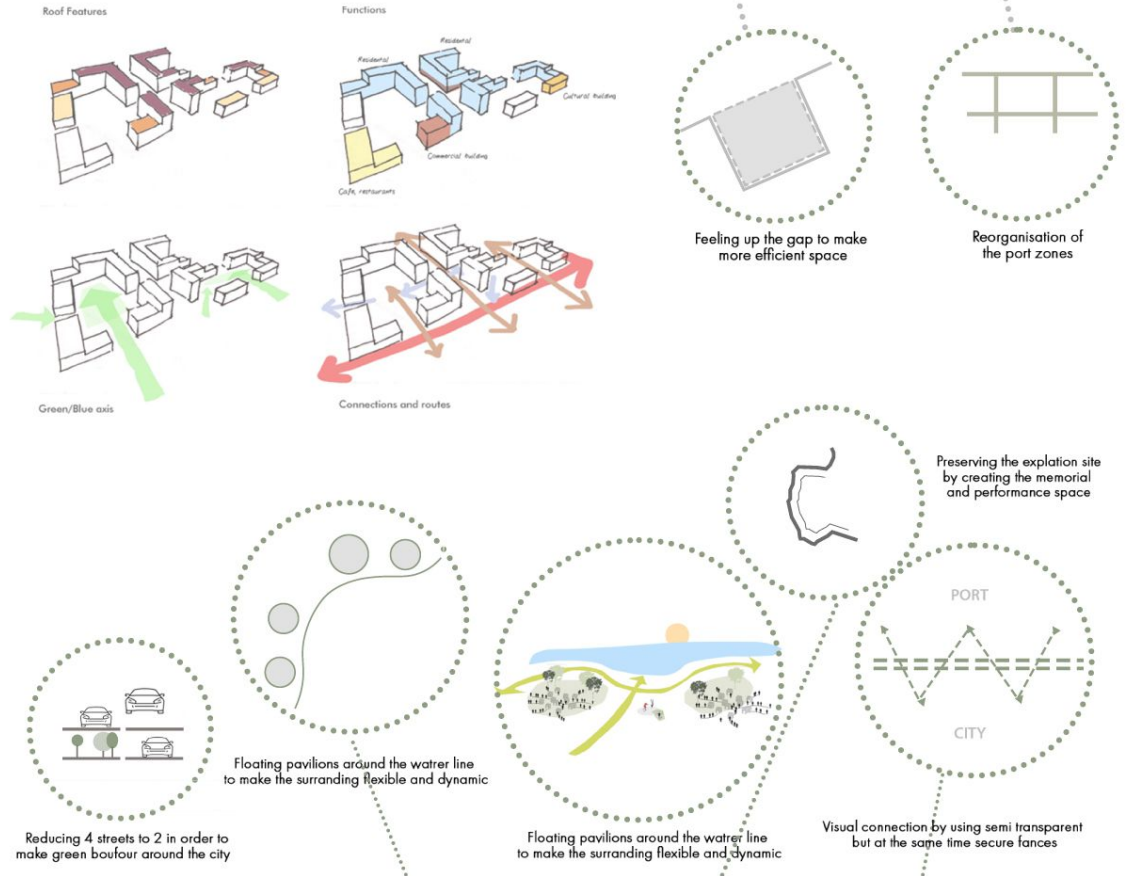




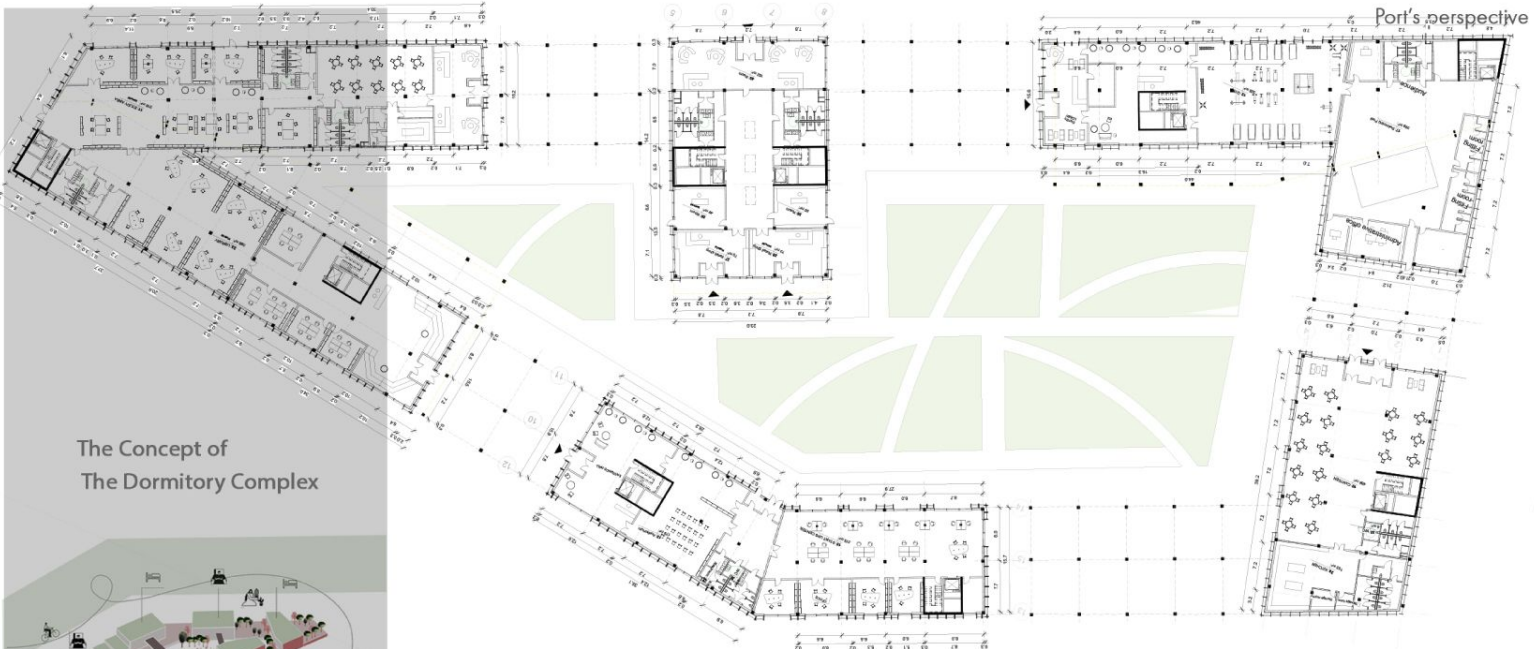
Master Plan
 Master plan for Beirut port was a challenging project focusing on the revitalization of significant are of the city. The aim of the project was to give a city a chance to regain it's connection with the sea and use and use its right for public space, creating a new water front of the city. Nevertheless it was still important to keep the function of the international, operating port but not by preserving its existing form and functional layout. The stratify for the port of Beirut was to rethink it and redesign the existing space in order to make more efficient and friendly enviroment for work of the port. The whole new district is based on the **green line** ehich cuts it in the two directions creating smaller areas ikn more human finnedly scade with the big advantage of significant green area which city of BEIRUT is missing so much right now

Regarding the typology of the buildings, it was important to create a connection between the environment outside and the building inside. As a result, the buildings were designed with terraces and a lot of openings. The surroundings such as green areas in the inner part of the building bring a feeling of a connection with nature. Green areas were increased by reducing the main road from 4 lines to 2 lines, where it's possible to add pedestrian walk and green areas for trees that reduce pollution.

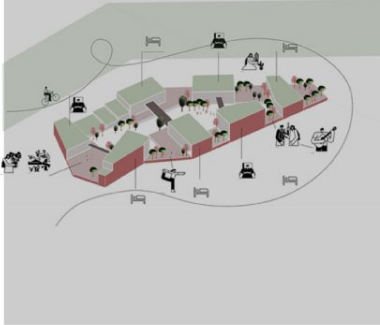


Cable car using port cranes as support tower to keep the spirit of the port neighbourhood

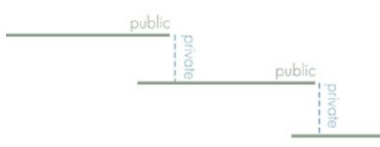




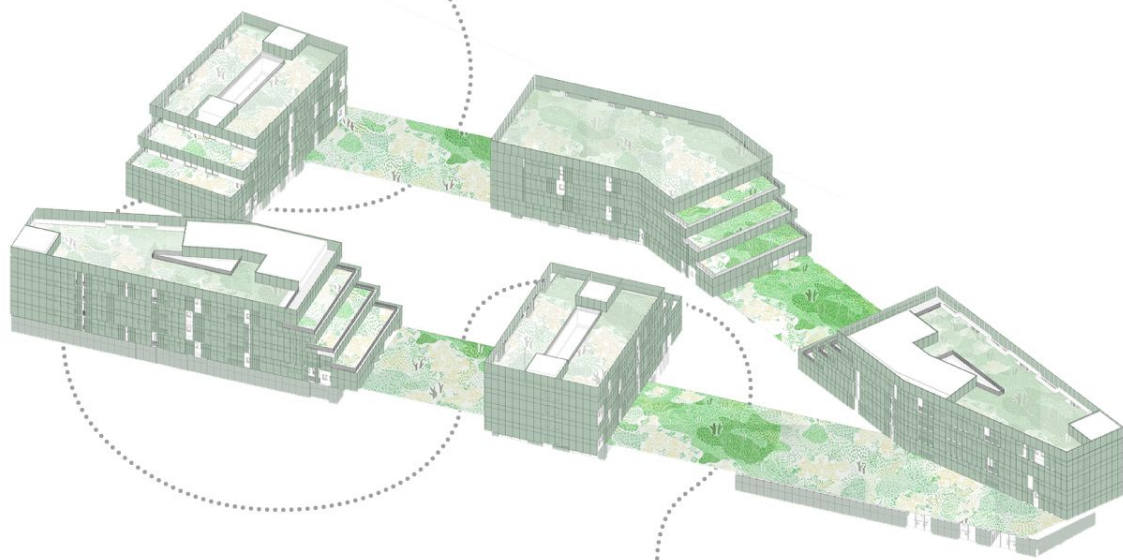
The Concept of The Dormitory Complex



Plan of the complex
scale 1:200

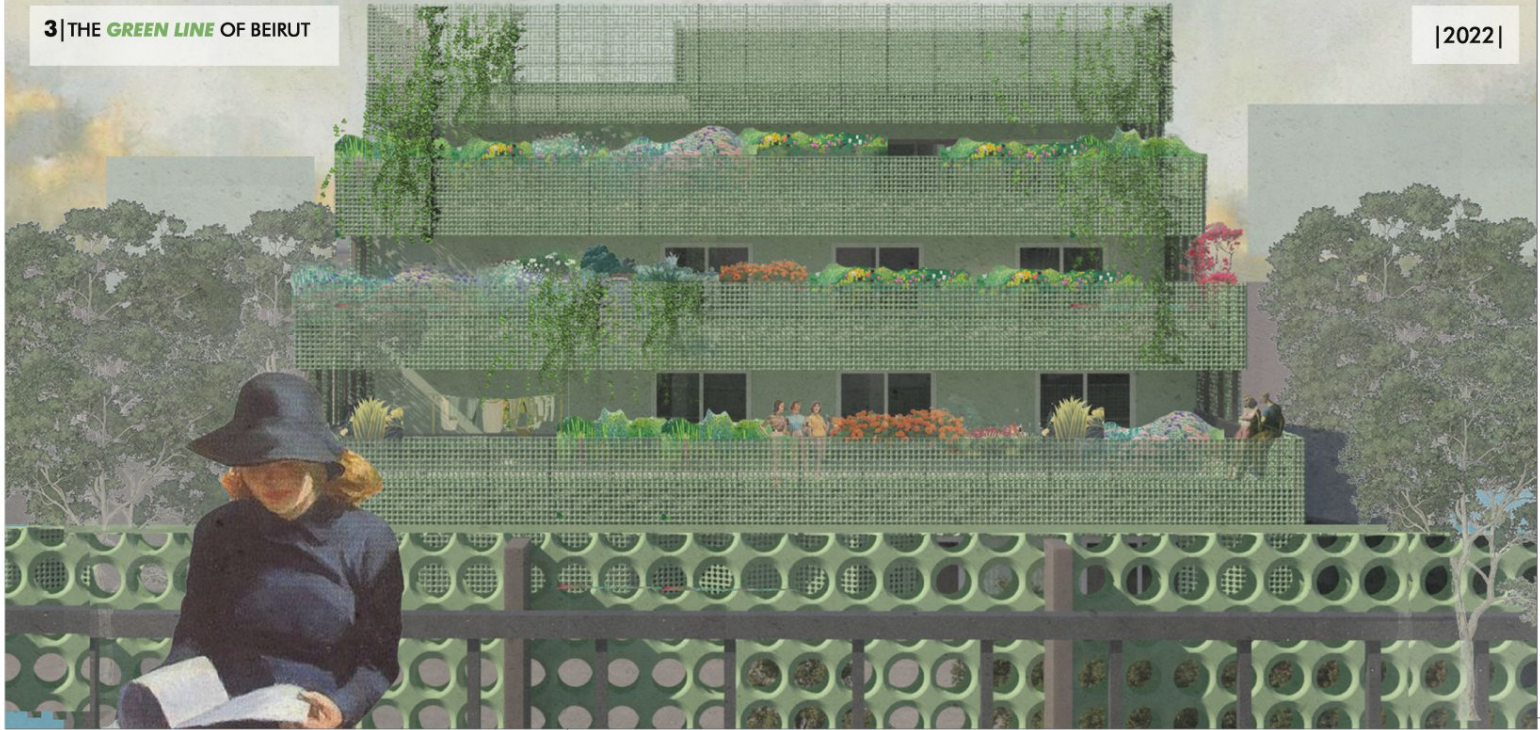


Functional structure

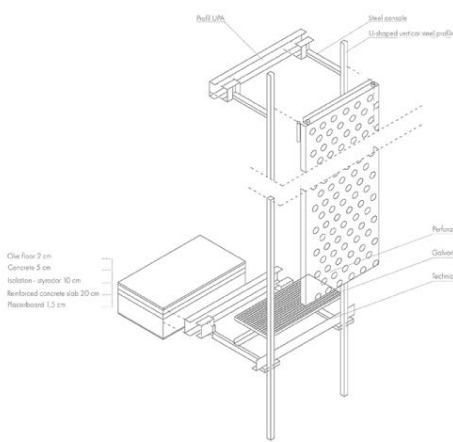
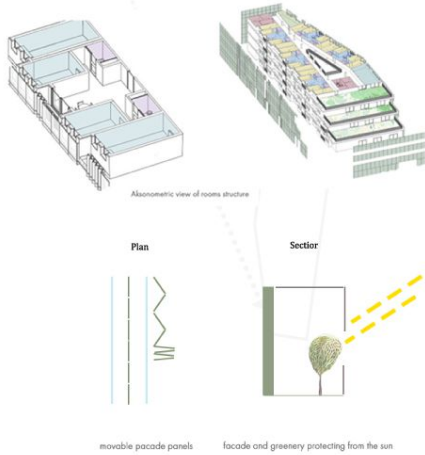


Aksonometry view

Functional structure

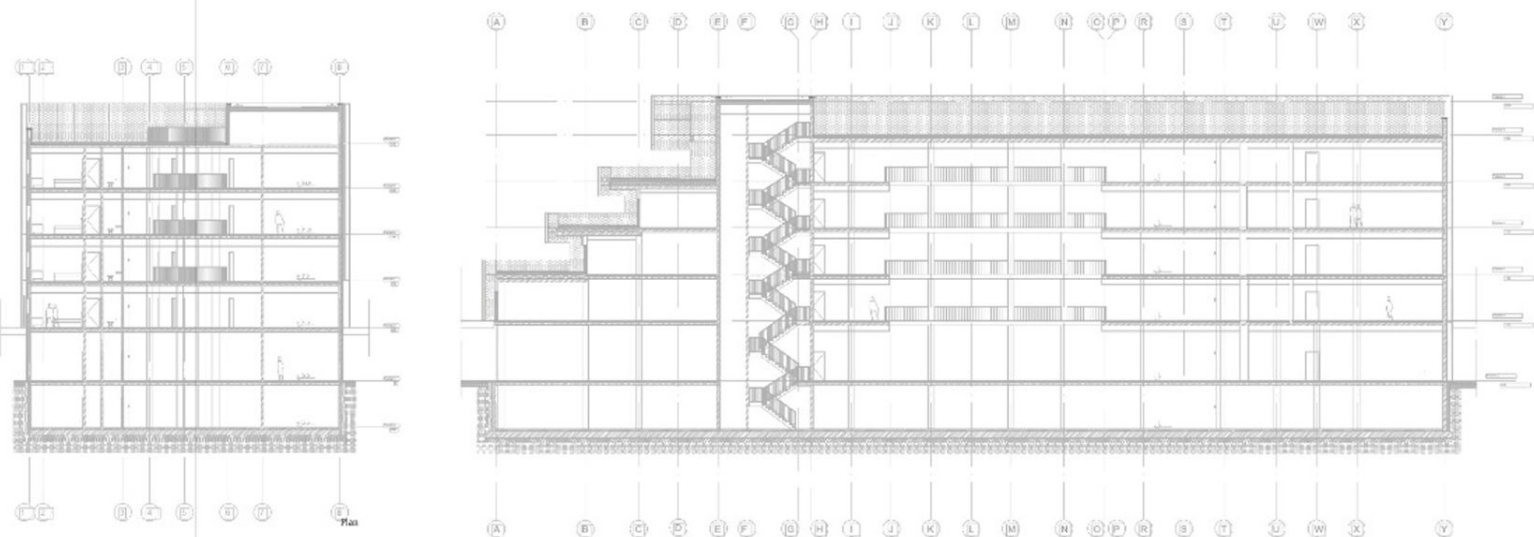


The dormitory complex shows desire of creating a new space which will be friendly for a new, young generation of Beirut. The idea for the whole concept repeats the idea for the whole district, smaller spaces that gathers people connected with green areas. Dormitories are supposed to work like urban villages, creating communities within the building and at the same time leaving a lot of space for a whole complex. Living units are supposed to provide users with comfortable space to live work and to socialize the heart of every unit, kitchen connected with common space is a friendly environment to build the smallest level of the community of the buildings.



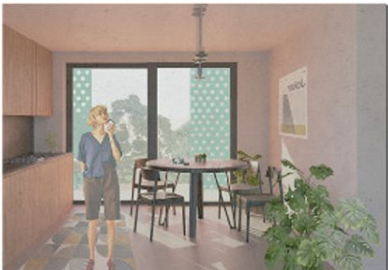
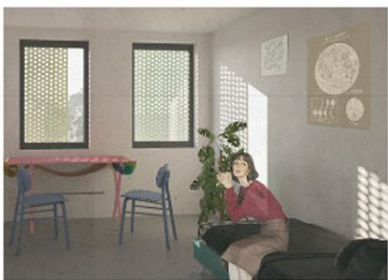


Perspective



Sections scale 1:200

Elevations



Interiors