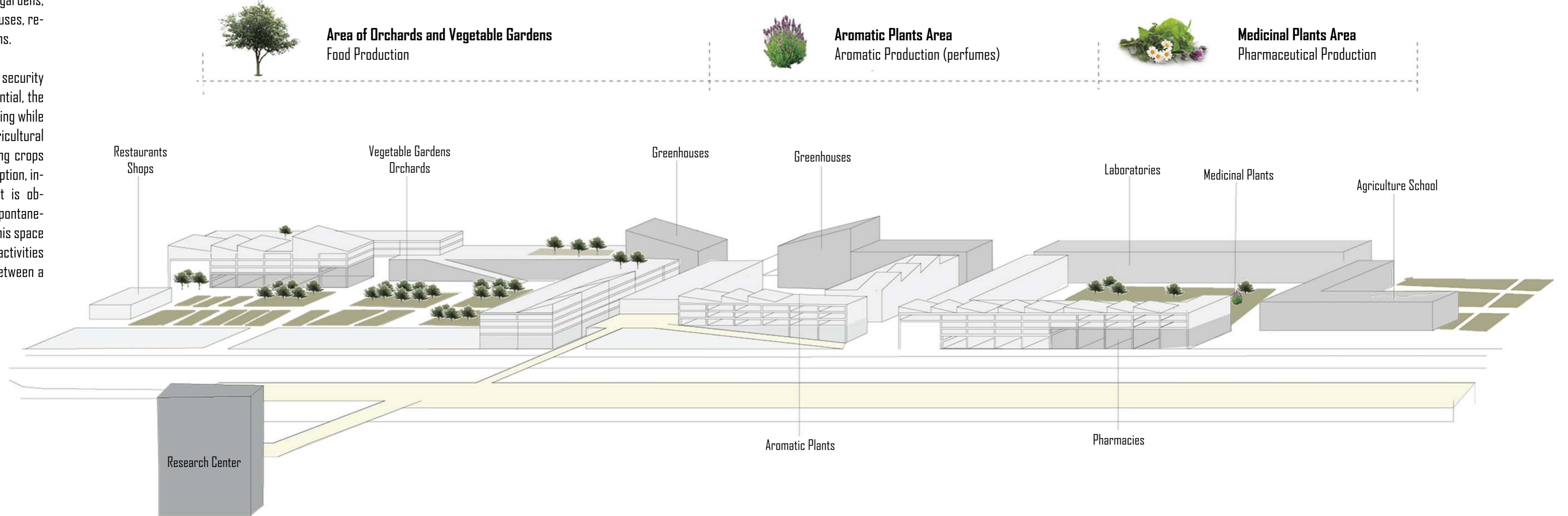


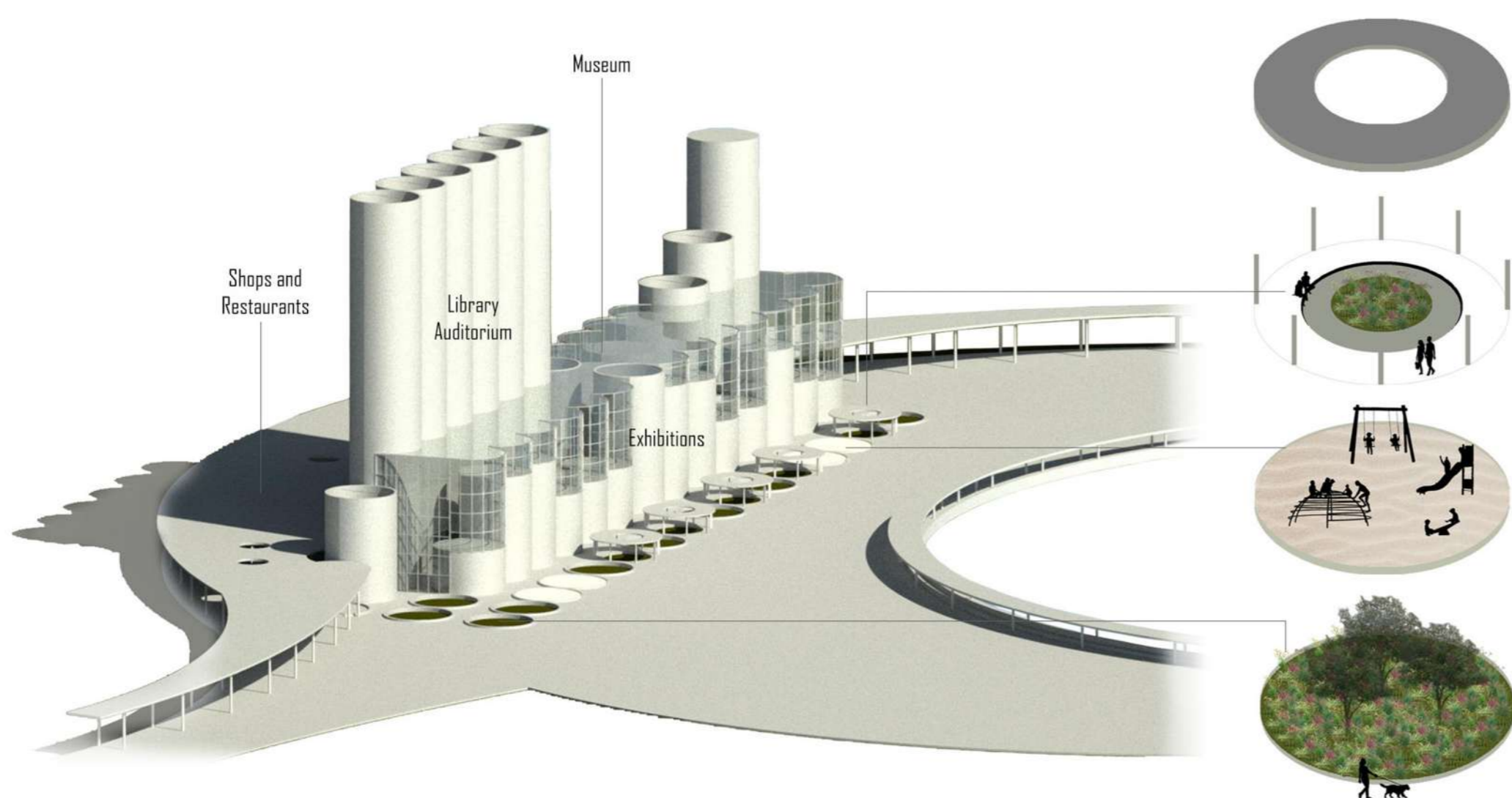
**Self Sustaining Creative Hub**

Rethinking the traditional free zone, this space is designated to be a creative hub, including housing with community agricultural gardens, start-up and workshop offices, greenhouses, research offices and public access gardens.

Taking into consideration the food security issues and the existing agriculture potential, the buildings are intended to be self-sustaining while providing areas for food crops. The agricultural species for the greenhouses and testing crops were based on the high national consumption, including an autochthonous variety that is obtained through a resource that grows spontaneously in the existing natural condition. This space will provide educational and leisure activities while creating a stronger connection between a city-port for the people.



**Memorial Square and Museum**



The grain silos has become the symbol of the 2020 explosion, due to the partial destruction of such a large structure and the protection it gave to the west side of the city. The proposal for the memorial site includes the demarcation of the explosion zone and the reconfiguration of the silos remains into a museum, both inserted in a public square, surrounded by a new urban park.

The demarcation is made through a continuous curved bench, which follows the shape left on the ground after the explosion, and allows the permanence in the square. The appropriation of the silos will happen in the ones that remained in place after the explosion, with the parts at risk of collapsing being removed, so they can become part of a museum. The ones that were completely destroyed will be delimited in the ground and may consist of spaces of vegetation, children's playgrounds or sitting spaces. The square is also complemented with some restaurants and shops, under a shading structure.

