

CONTEXT



1000 ab/km²

Population density



Noise map



Old functional areas of Beirut Port



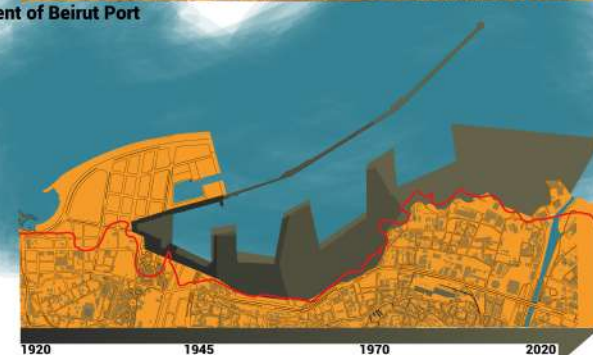
Tree cover surface



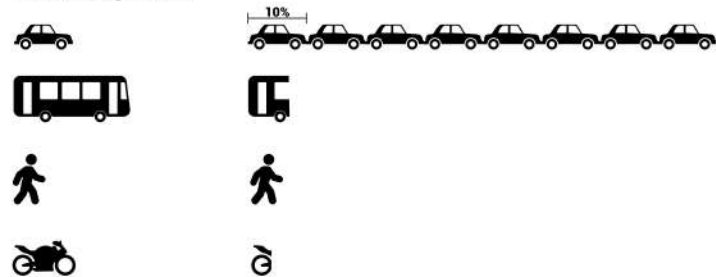
Direct sun hours



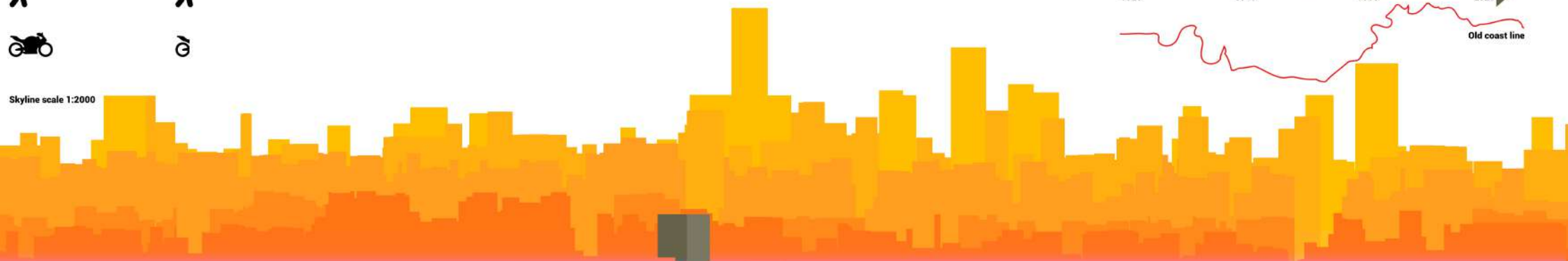
Development of Beirut Port



Beirut's transportation



Skyline scale 1:2000

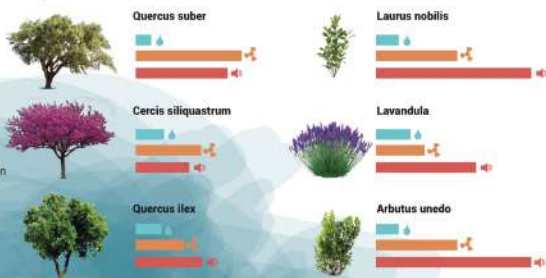


PROGRAM

Vegetation abacus

Legend:

- Water
- Capacity to assimilate the pollution
- Capacity to assimilate rumors



Rain garden

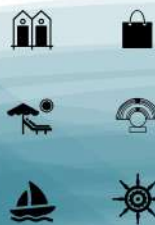


1. Rain: 730 l/m² a year
2. Grassy protective strip
3. Draining soil
4. Gravel
5. Drainage pipes

Old Functions



New Functions



Potential photovoltaic power



Photovoltaic Sistem



Potential photovoltaic power for all the surface of port: 2,42 TWh a year.

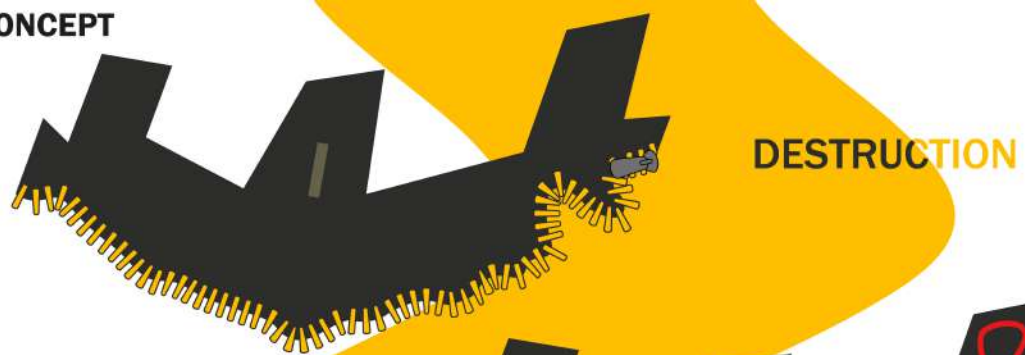
Electricity energy consumed in Lebanon in 2018: 17,7 TWh.

So the potential photovoltaic power of this area is equal to the 13,7% of the total consume of the ENTIRE LEBANON

- Bathing-hut
- Passengers terminal
- Beaches
- Shopping center
- Sail boats school
- Touristic port

- Rain garden
- Green filter
- Tunnel for vehicles
- Demolished buildings
- luxury business zone
- New pedestrian path
- Open-air theatre
- Raised path
- Green bridges

CONCEPT



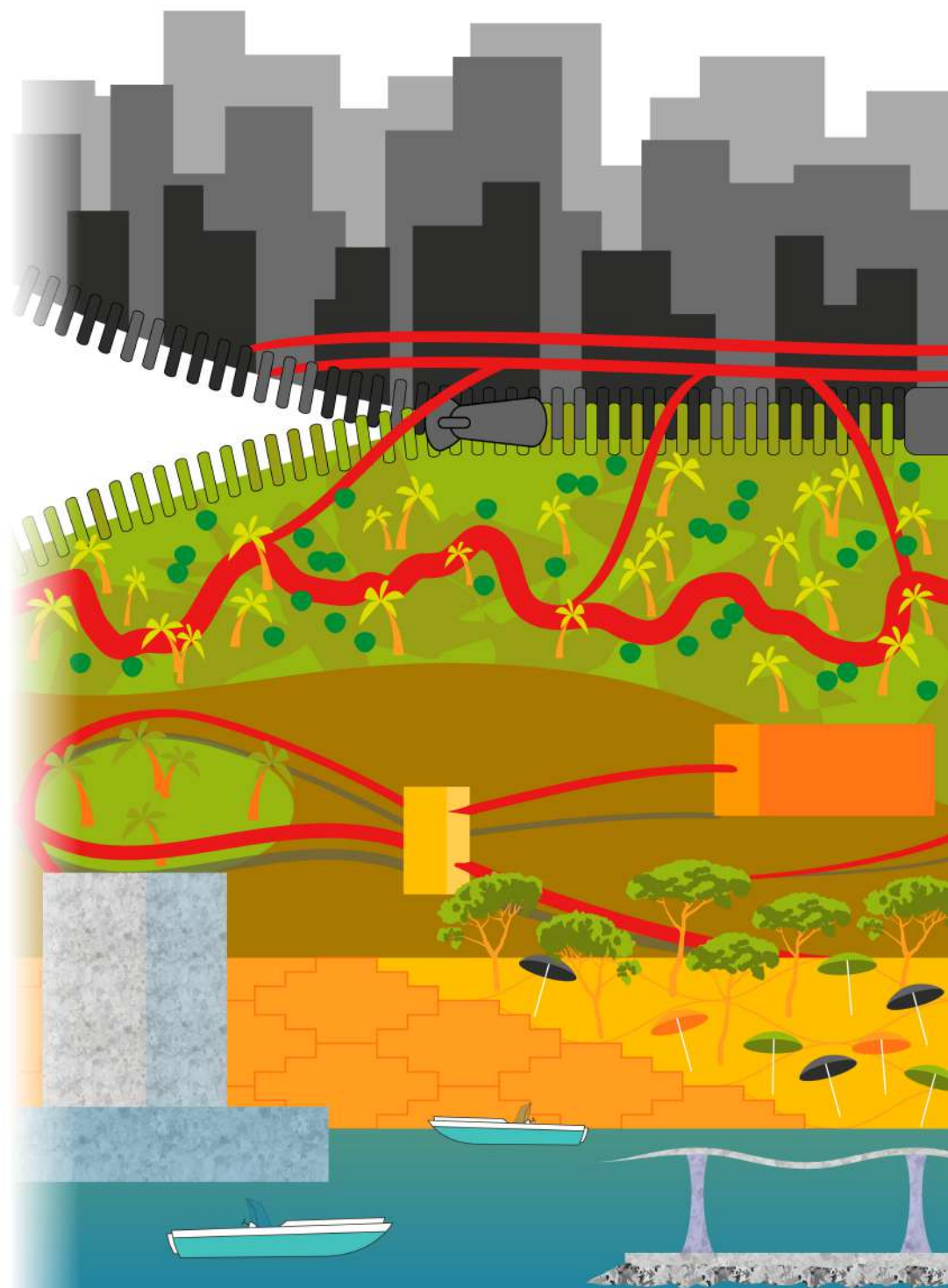
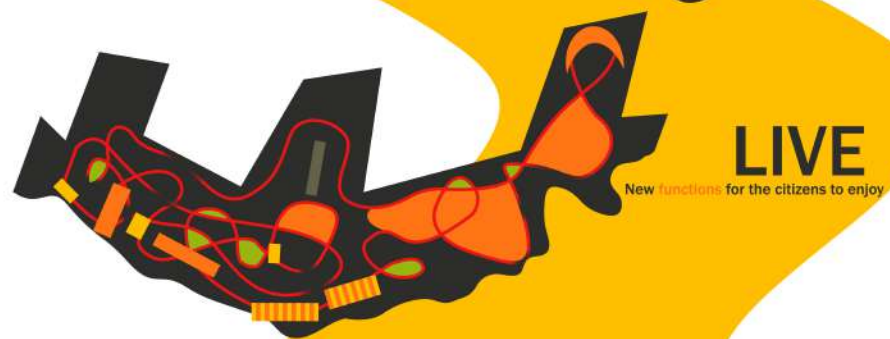
CREATE

A new picture for the city of Beirut



RAISE

The new landmark with its ups and downs





Planimetry scale:

