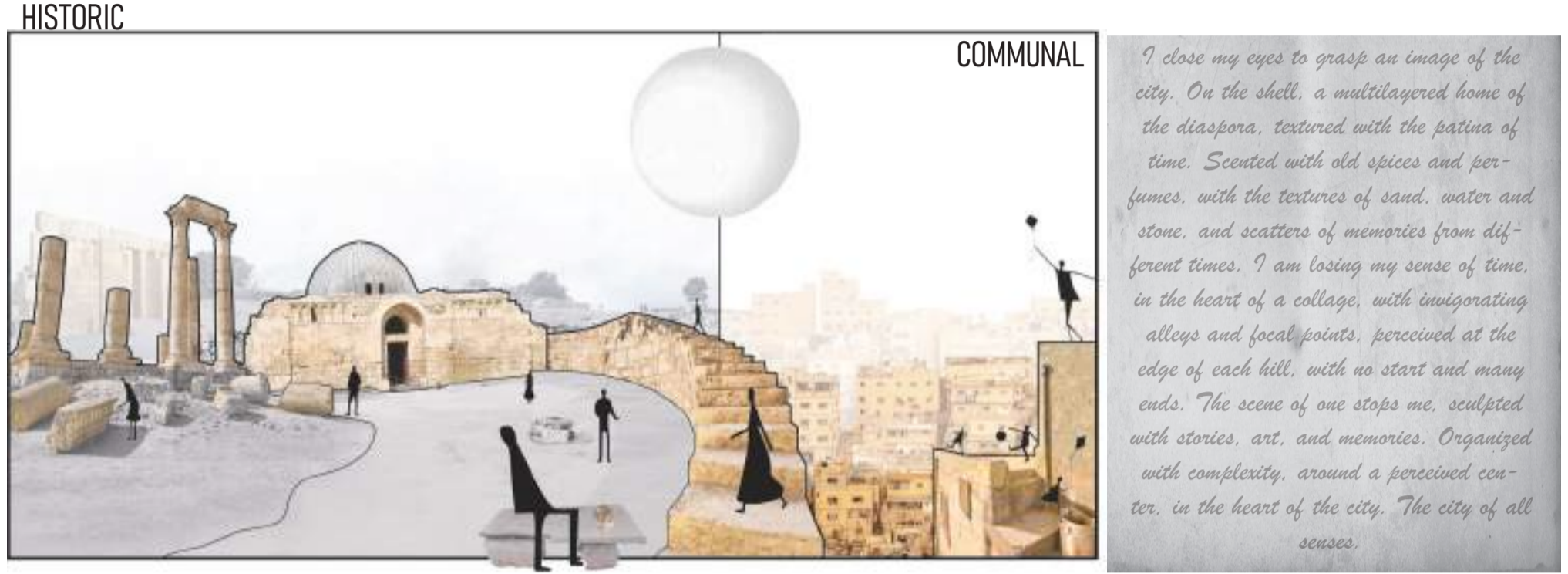


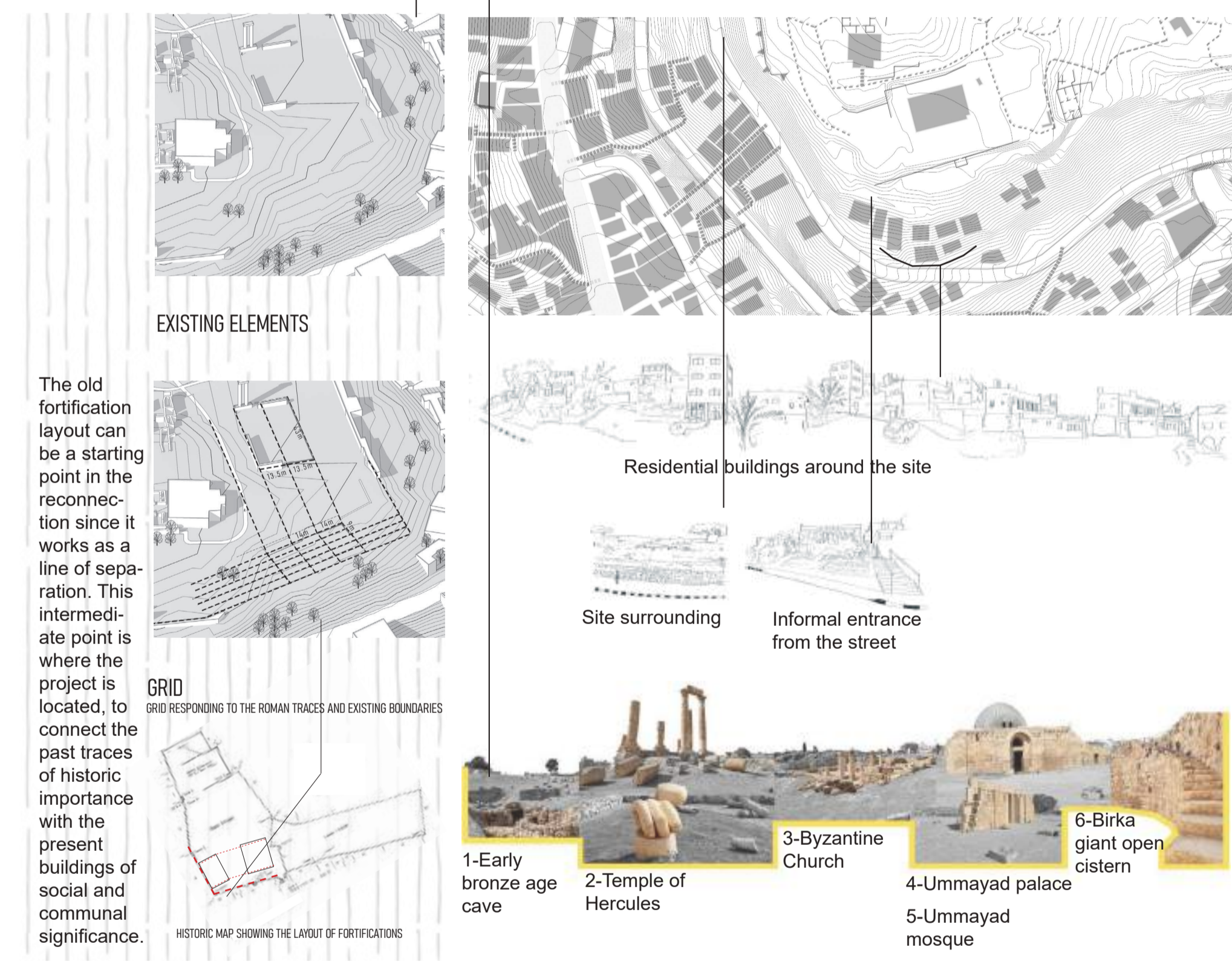
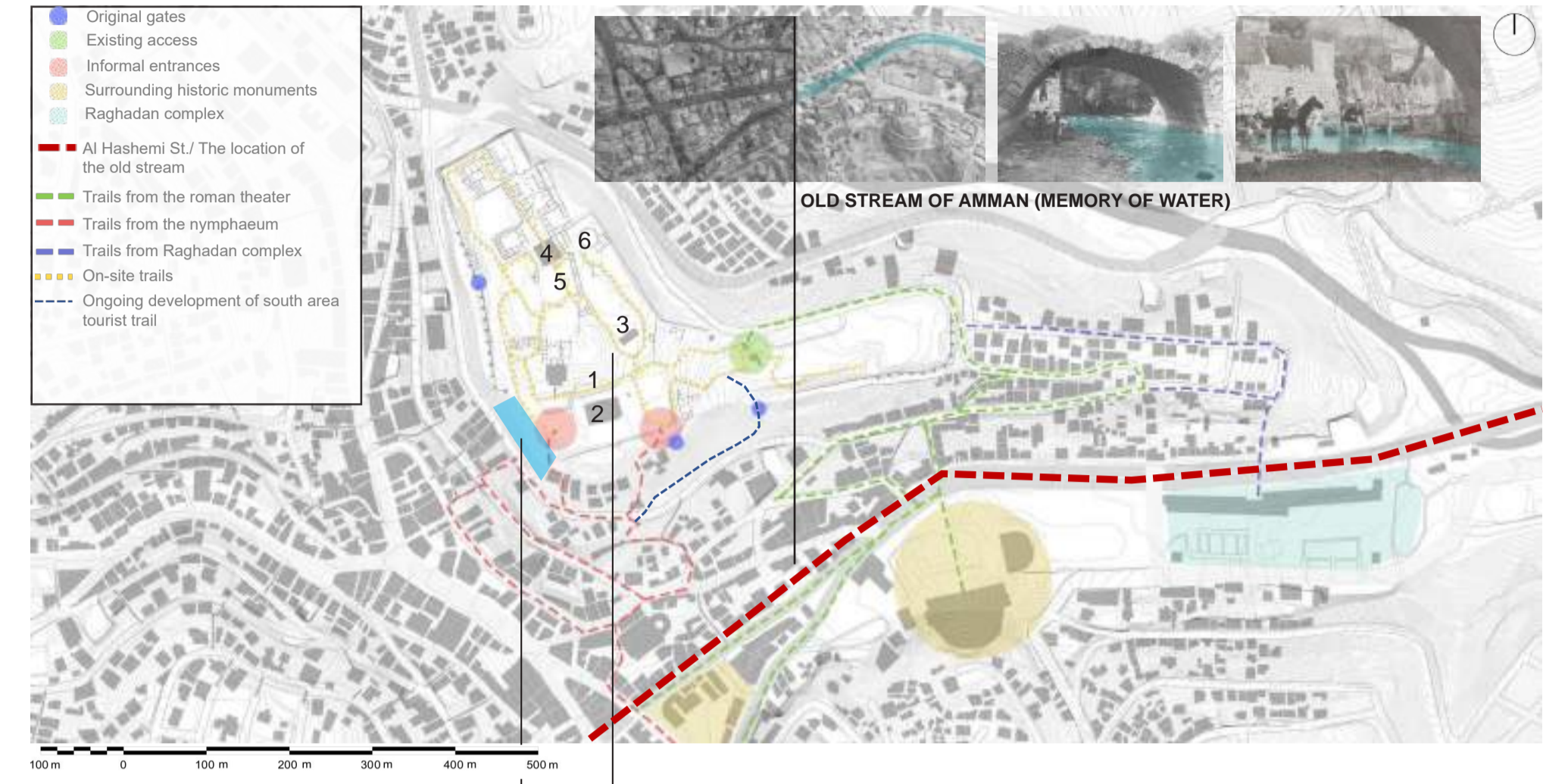
# Collage of Memories

Project Title: Collage of memories (A journey from reminiscence to serenity)  
 Project Site Location (City, Country): Amman, Jordan  
 Project coordinates on google maps: (31.9533562, 35.9341154)  
 Project Function: Community Exhibition

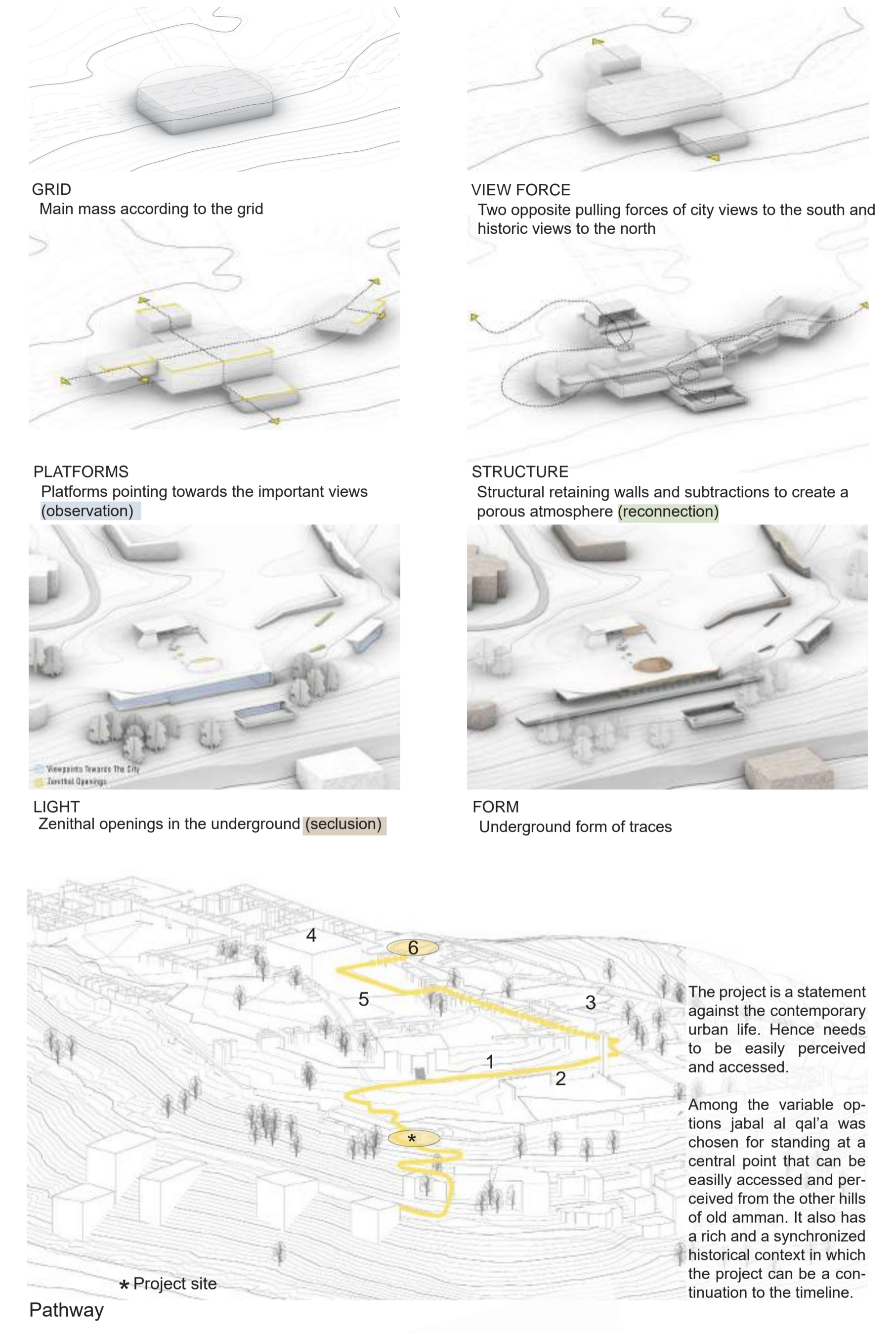
## Narrative



## Context

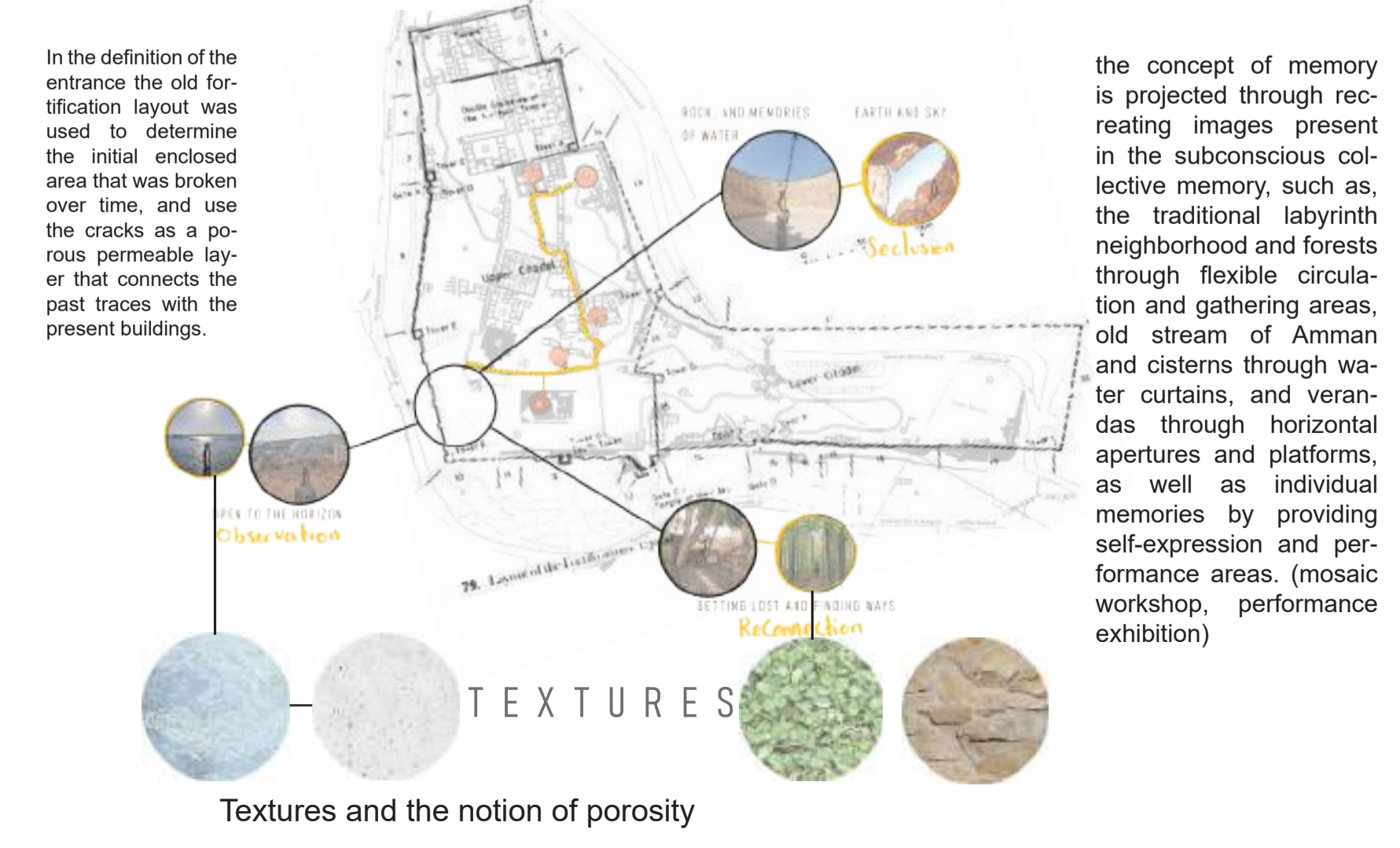


## Morphology



The project is a statement against the contemporary urban life. Hence needs to be easily perceived and accessed. Among the variable options jabal al qala was chosen for standing at a central point that can be easily accessed and perceived from the other hills of old amman. It also has a rich and a synchronized historical context in which the project can be a continuation to the timeline.

	Challenge	Response	Concept	REMINISCENCE	MEMORIES	MEMORY STORAGE	MEMORY RETRIEVAL	MEMORY CREATION
Global Site Specific	the gap between the historic and communal areas	Platforms for communal engagement with an intermediate intervention with both historic and communal qualities.	MEMORY STORAGE PAST	REMINISCENCE	MEMORIES		MEMORY RETRIEVAL PRESENT	MEMORY CREATION FUTURE
	undefined entry point.	Add platforms around the existing fortification layout that point towards the important visual connections	SECLUSION COGNITIVE CONSTRUCTION	REMINISCENCE	MEMORIES		MEMORY RETRIEVAL PRESENT	MEMORY CREATION FUTURE
	general cultural amnesia, and fast, monotonous, and incoherent urban developments.	preserving memory and nature  Reinforcing spiritual relief and sensory engagement  Promote a healthy lifestyle (pedestrianized project)  Unique experience to each individual (Mosaic Workshop and performance exhibition)	VERTICAL APERTURES (ZENITHAL LIGHT) CONTAINED SPACES, AND SINUOUS PATHWAYS (SENSE OF PRIVACY)  ABSTRACT (SHADOW AND LIGHT WITH CONCRETE)  ETERNAL	REMINISCENCE	MEMORIES		MEMORY RETRIEVAL PRESENT	MEMORY CREATION FUTURE
				RECONNECTION SENSORY EXPERIENCE			OBSERVATION PERCEPTION	RECONNECTION SENSORY EXPERIENCE
				TRACES (PAST) PEOPLE (PRESENT) NATURAL ELEMENTS (FUTURE)			HORIZONTAL APERTURES (OUTDOOR VIEWPOINTS) EXHIBITION SPACES (INDOOR)	TRACES (PAST) PEOPLE (PRESENT) NATURAL ELEMENTS (FUTURE)
				TRANSPARENT (AIR, WATER, GLASS)  EPHEMERAL			TRANSPARENT (AIR, WATER, GLASS)  EPHEMERAL	EARTHLY (ROCKS, VEGETATION)  PERMANENT
				ETERNAL			ETERNAL	ETERNAL
							SPiritual/ PSYCHOLOGICAL STABILITY	
							SERENITY	



the concept of memory is projected through recreating images present in the subconscious collective memory, such as, the traditional labyrinth neighborhood and forests through flexible circulation and gathering areas, old stream of Amman and cisterns through water curtains, and verandas through horizontal apertures and platforms, as well as individual memories by providing self-expression and performance areas. (mosaic workshop, performance exhibition)



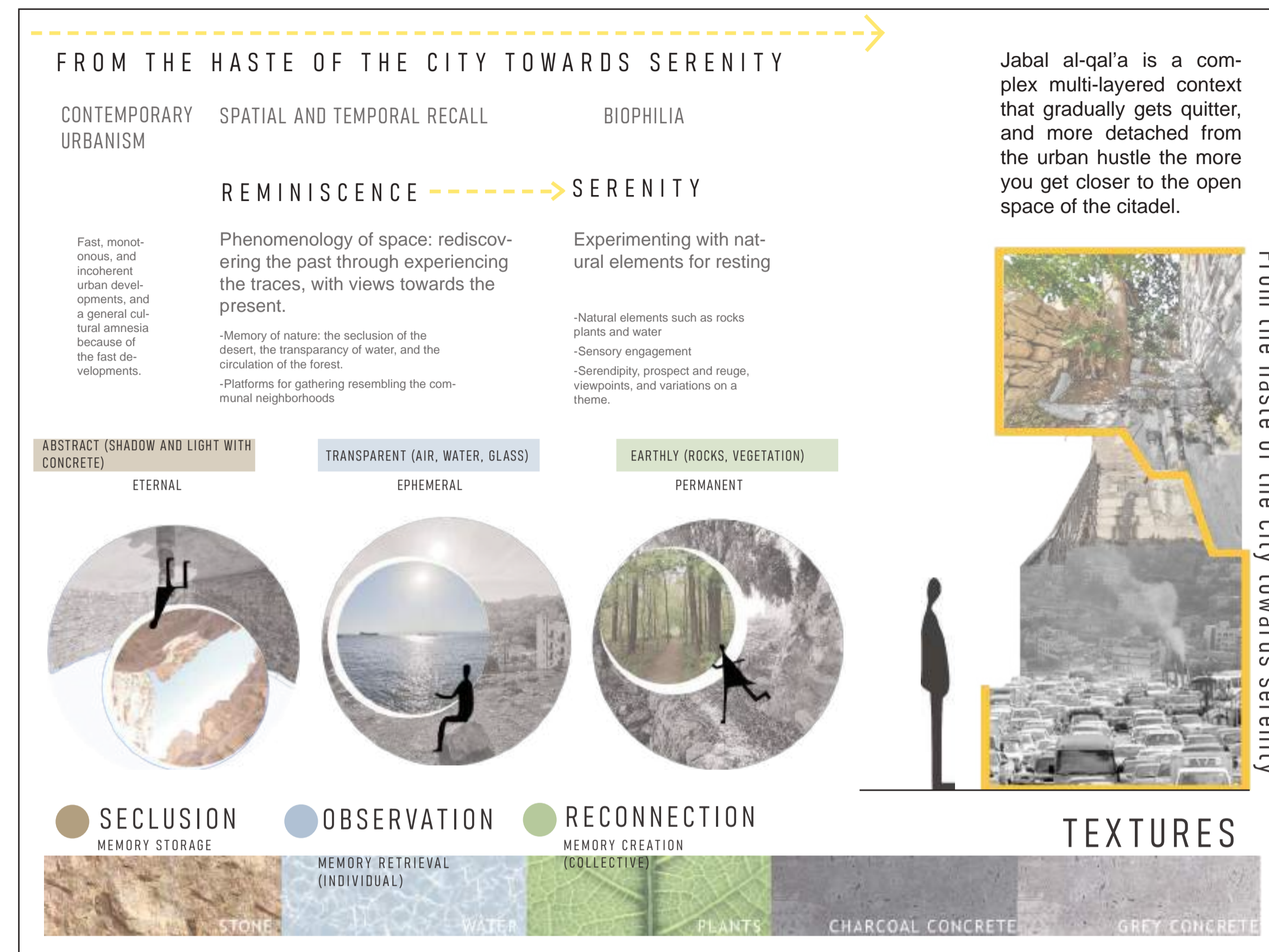
# Collage of Memories

We are living a dilemma of a moving world that strives for productivity, and the inner self that needs stopping points for reflection. With the hustle of city life, we ignore the need for intrinsic connections exceeding our mere physicality. But can we stop time for a moment of serenity? What about right in the heart of the city?

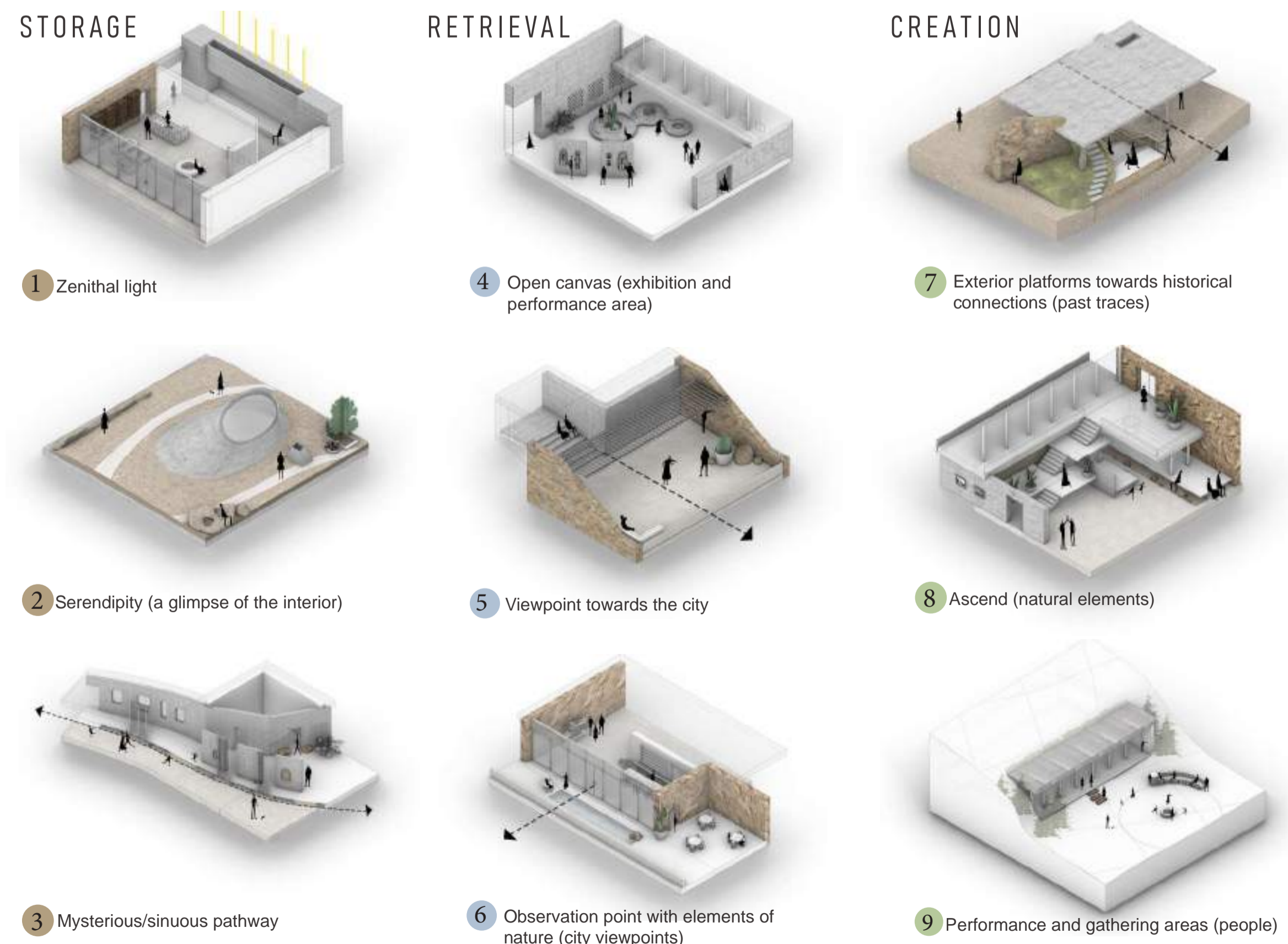
The citadel, in the heart of Amman, lacks the day-to-day experience of the people living around it, whose buildings create informal points of interaction between the tourists and the residents. Moving up there all the way from the crowded streets of downtown, one can smell the freshness of figs and jasmine flowers, feel textured walls, hear voices of birds and kids, and be treated with desserts from the aunts in the neighborhood, while enjoying the views of the city, and finally, contemplating the contrast between the old civilizations and the present-day city at the peak. This transition from the haste of the city to the serenity of the peak, with memories captured in the process of ascending, can be hardly felt coming from the conventional entrance. However, the biggest challenges are the gap between the historic and residential areas, and the undefined entry point.

While comparing the physical layer of traces, and the social layer of human presence, one can notice a gap, that can add up to the journey through Amman's historicity when bridged. The old fortification layout, which separates the two areas, is the intermediate point where the project is located, to connect the past traces of historic importance with the buildings of social and communal significance. Communal and historic qualities are also manifested in gathering and exhibition spaces, with contemplation areas, as experienced in different parts of the site.

The concept of memory was dealt with from three angles, the first is memory storage, represented in seclusion diagrams, and it can be achieved through spaces of contemplation with zenithal light openings, and a slow-paced experience, since it can help in storing events in memory. The second is memory retrieval, as showcased in observation diagrams, and is manifested in outdoor and indoor viewpoints that clear the mind and facilitate the retrieval of memory. The final element is memory creation, represented in reconnection diagrams, focusing on reconnecting people, nature, and past traces to create memories.

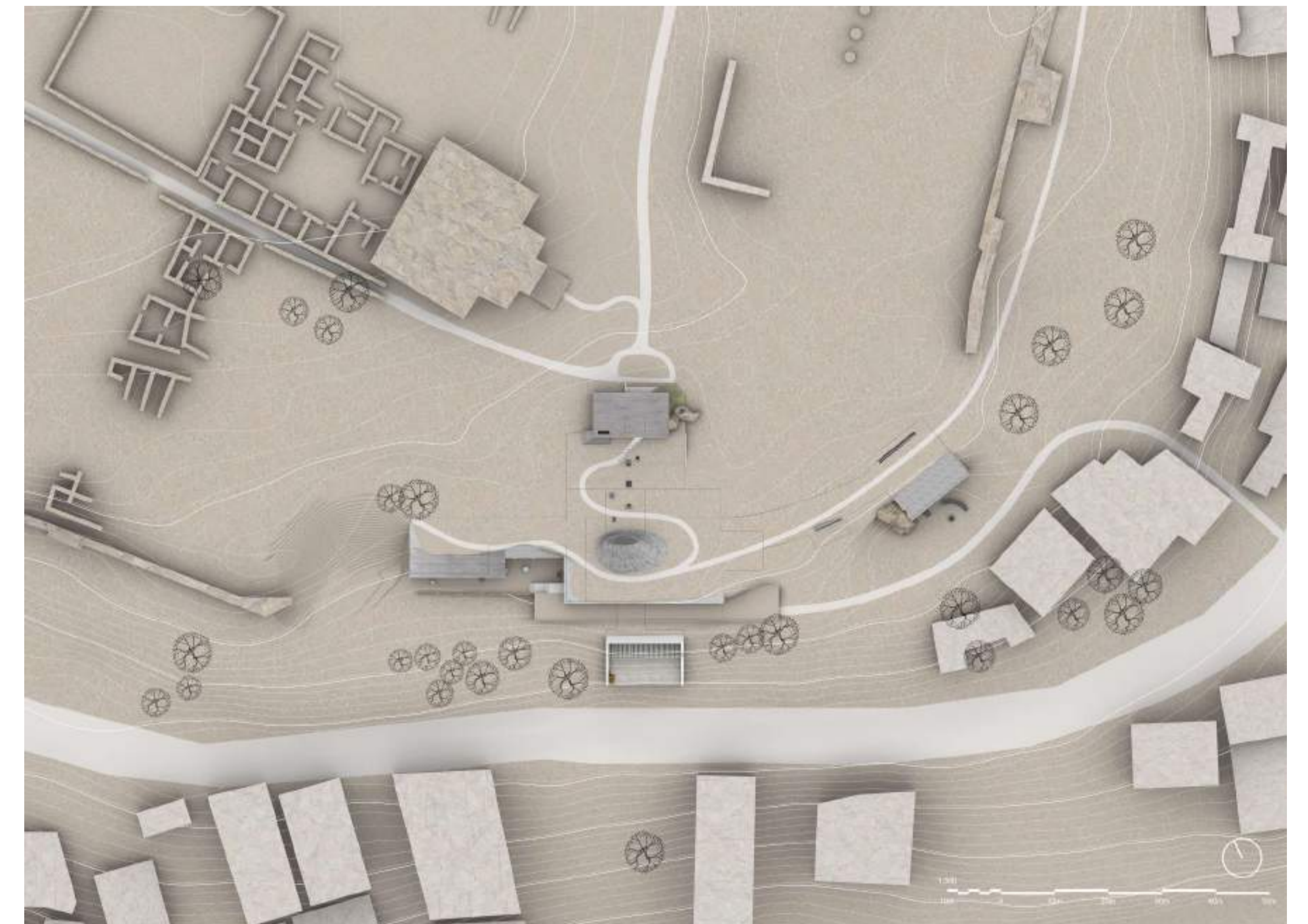


1. Concept



3. Concept Diagrams of Memory

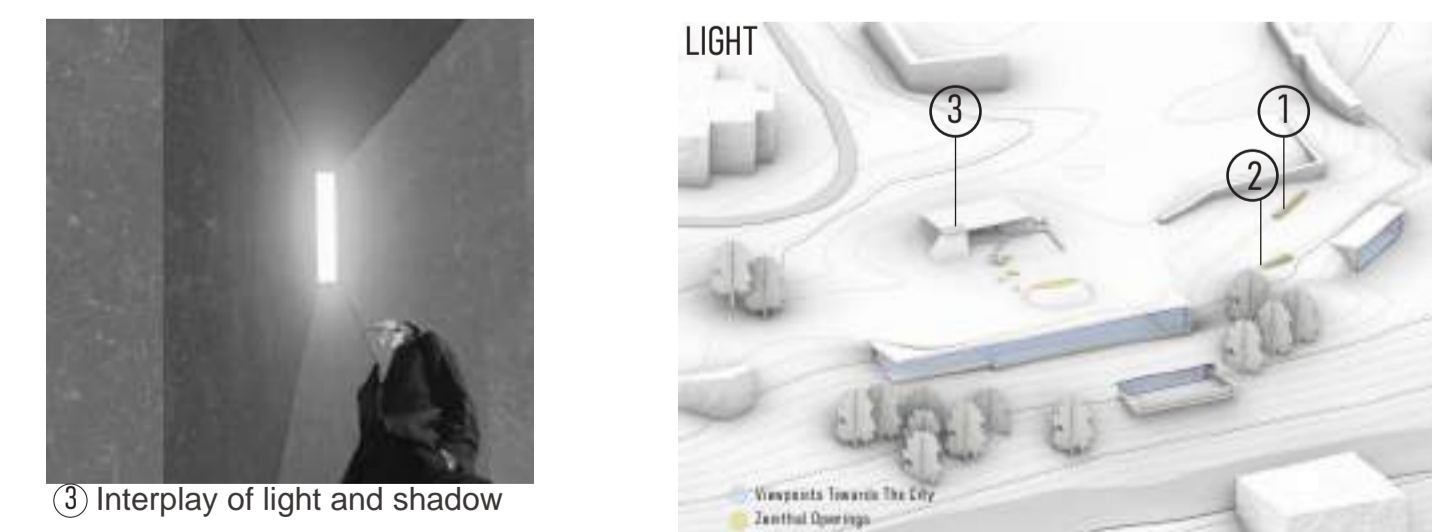
Jabal al-qal'a is a complex multi-layered context that gradually gets quieter, and more detached from the urban hustle the more you get closer to the open space of the citadel.



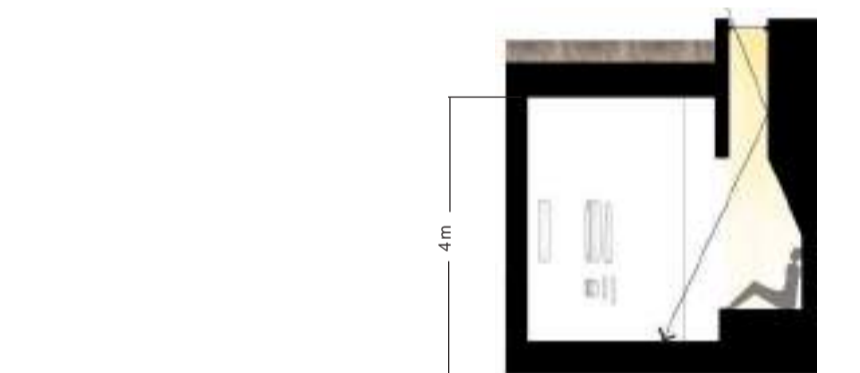
2. Site Plan 1:700



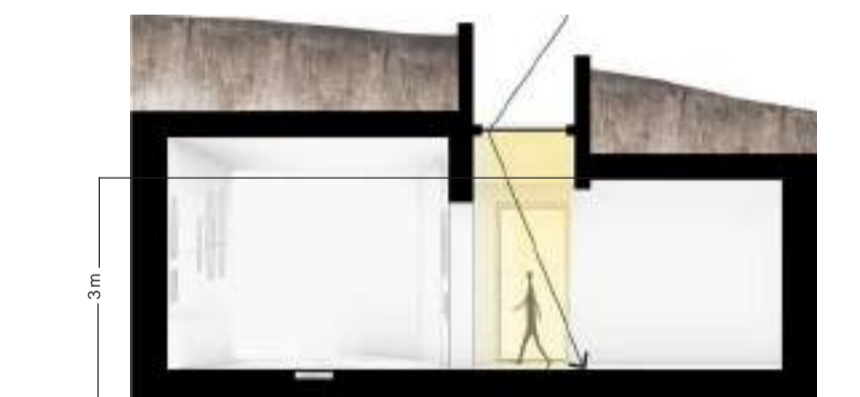
① Exhibitions and contemplation areas



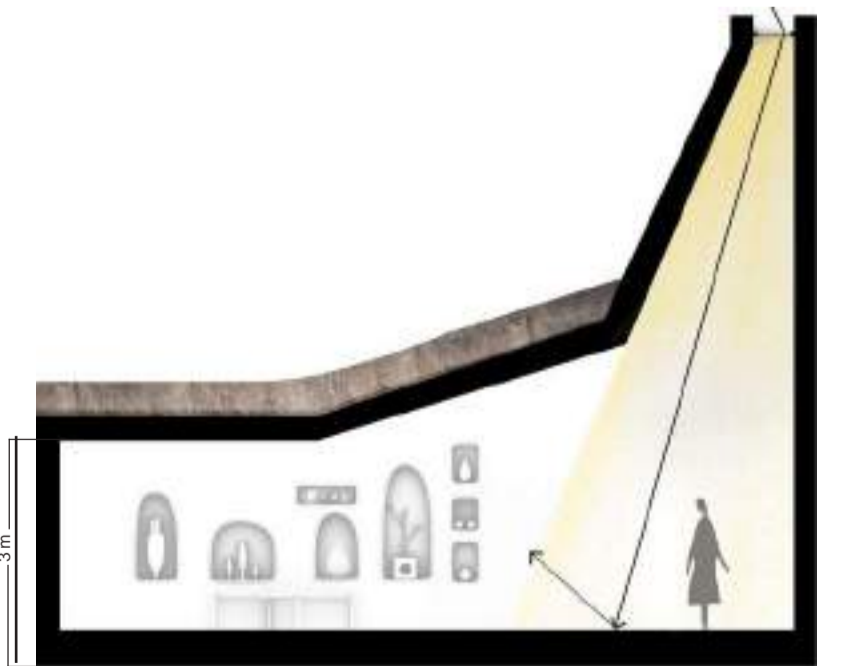
4. Seclusion Drawings (zenithal light)



① Side seating area with zenithal light



② Corridor area with zenithal light



③ Interplay of light and shadow

5. Sections 1:100



# Collage of Memories

The areas of memory storage (present) are abstract in their materiality, with concrete and light since their ephemeral qualities are suitable for spaces of contemplation and passing-by. On the other hand, the areas of memory retrieval (past), and creation (future), are represented by earth, plants, water, and stone, which are permanent materials symbolizing the rootedness of nature, and the future possibilities. This dichotomy of natural complexities, and minimalistic abstractness stems from the dual nature of the self, manifested in the very essence of a human dilemma in an outer world bound by the rules of the Earth (body), simultaneous with an inner world that negates it (mind).

As demonstrated by looking at the general cultural amnesia with fast, monotonous, and incoherent urban developments, preserving memory is becoming widely important. The project, as a continuation to the historic site, aims to exhibit the concept of memory, creating a journey from the haste of the city, gradually moving towards a state of serenity through episodes of reminiscence.

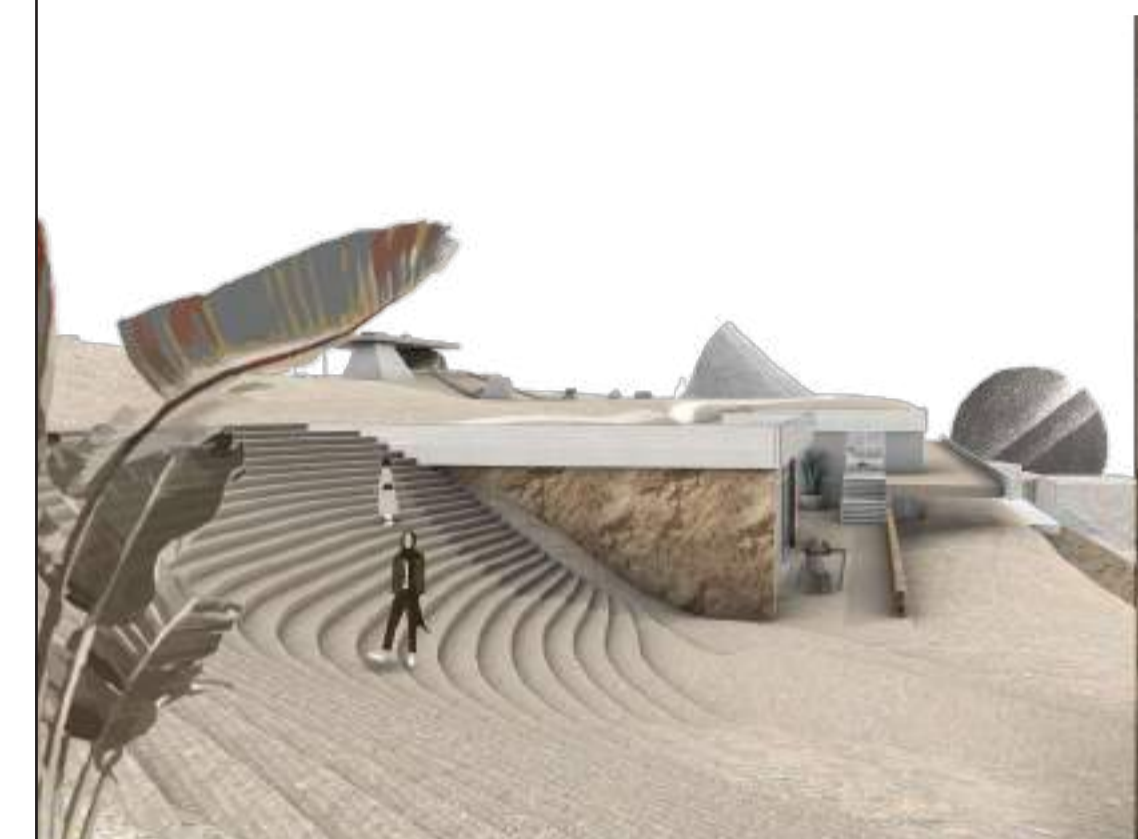


1. Aerial view, and contextual section B-B 1:400



Section A-A 1:700

Front elevation 1:700



Outdoor stair leading towards the citadel

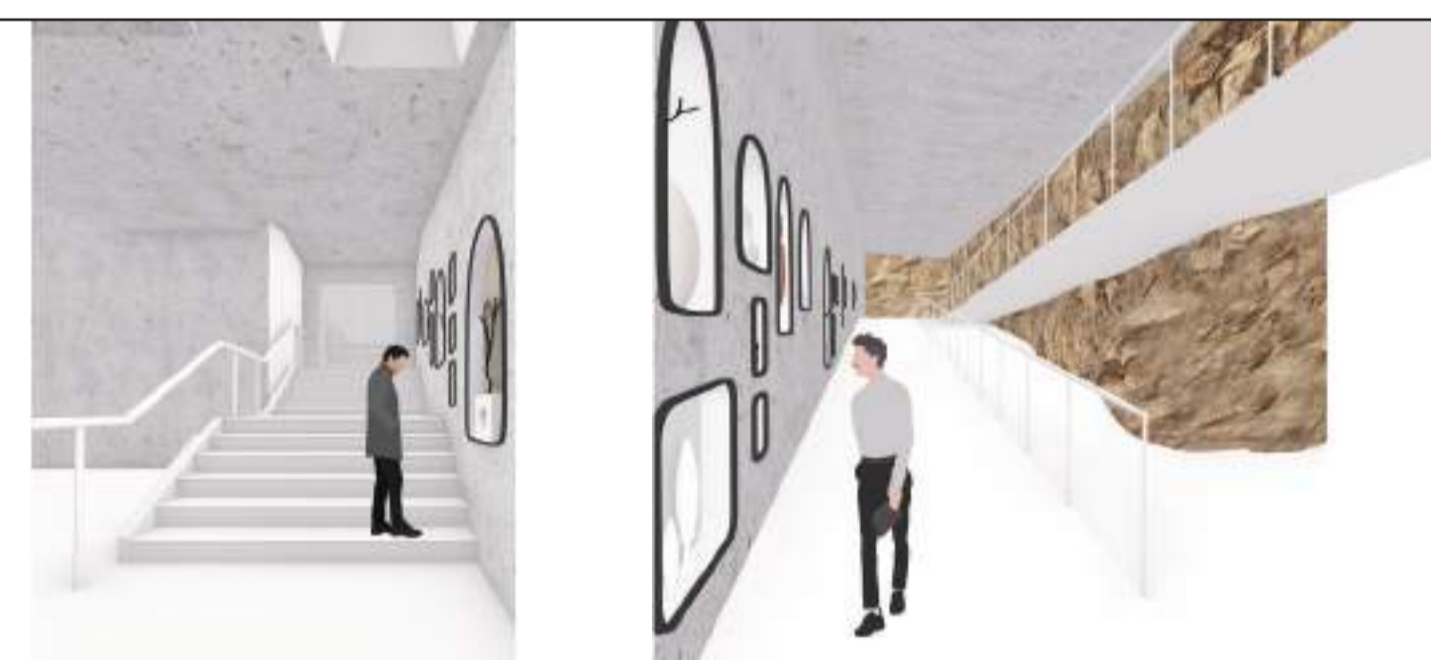


Entrance from the citadel with a view Towards the city

2. Front elevation 1:700, section A-A 1:700, exterior shots



Collective memories of nature (water, vegetation, rocks, and gathering)



Artifacts exhibitions



PLATFORMS



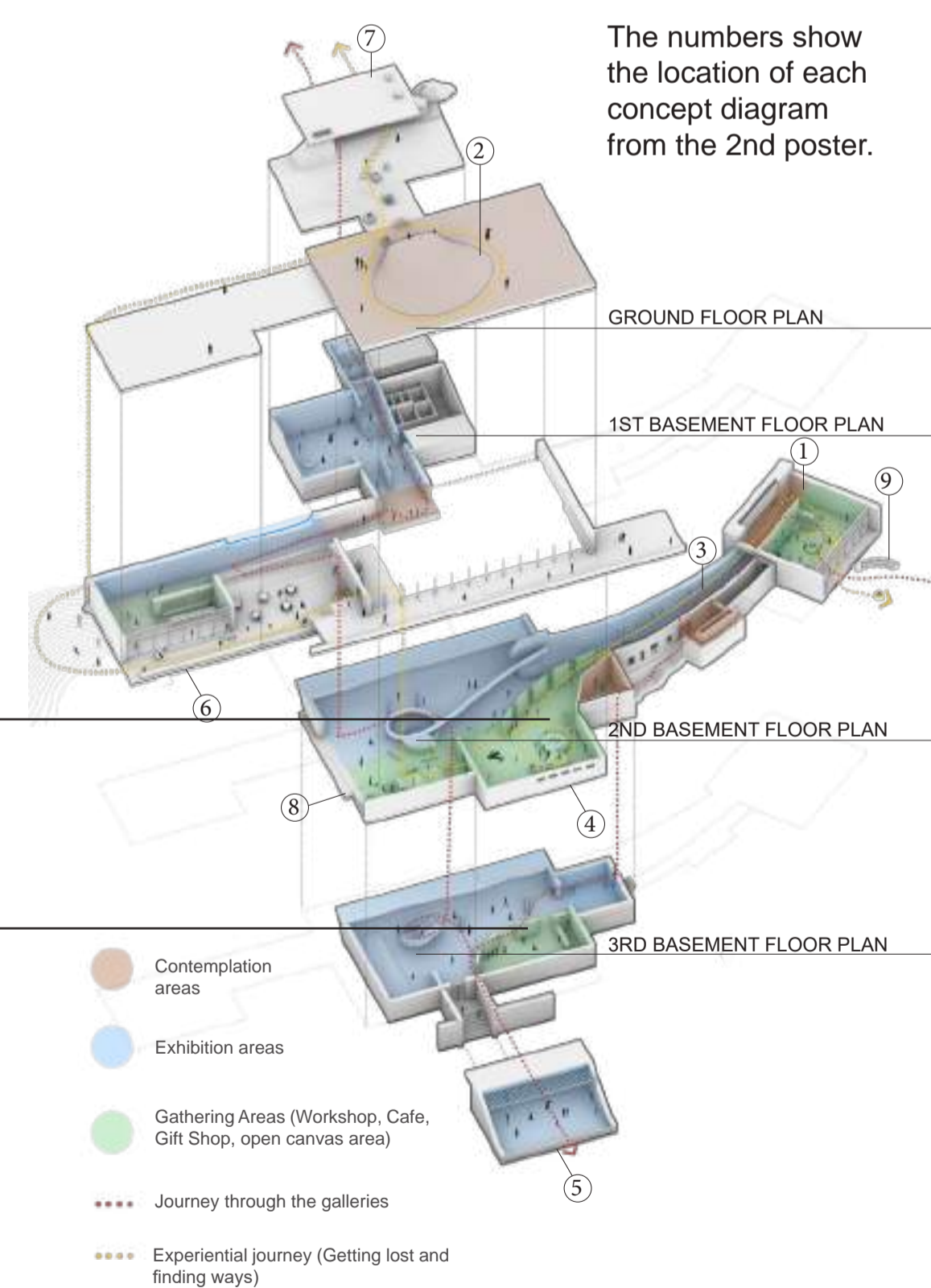
Exhibition where copies of the customised mosaic pieces are unified in a work of art (individual traces)



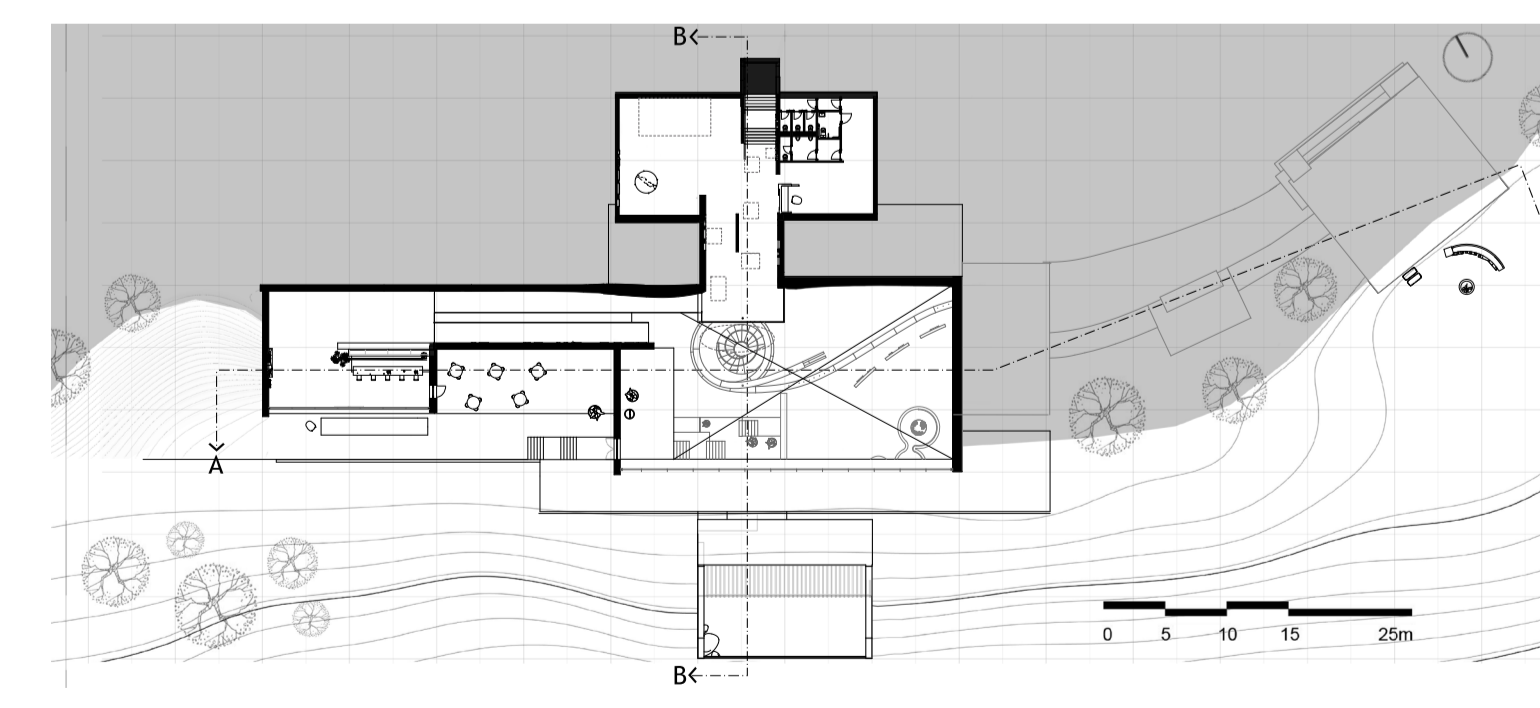
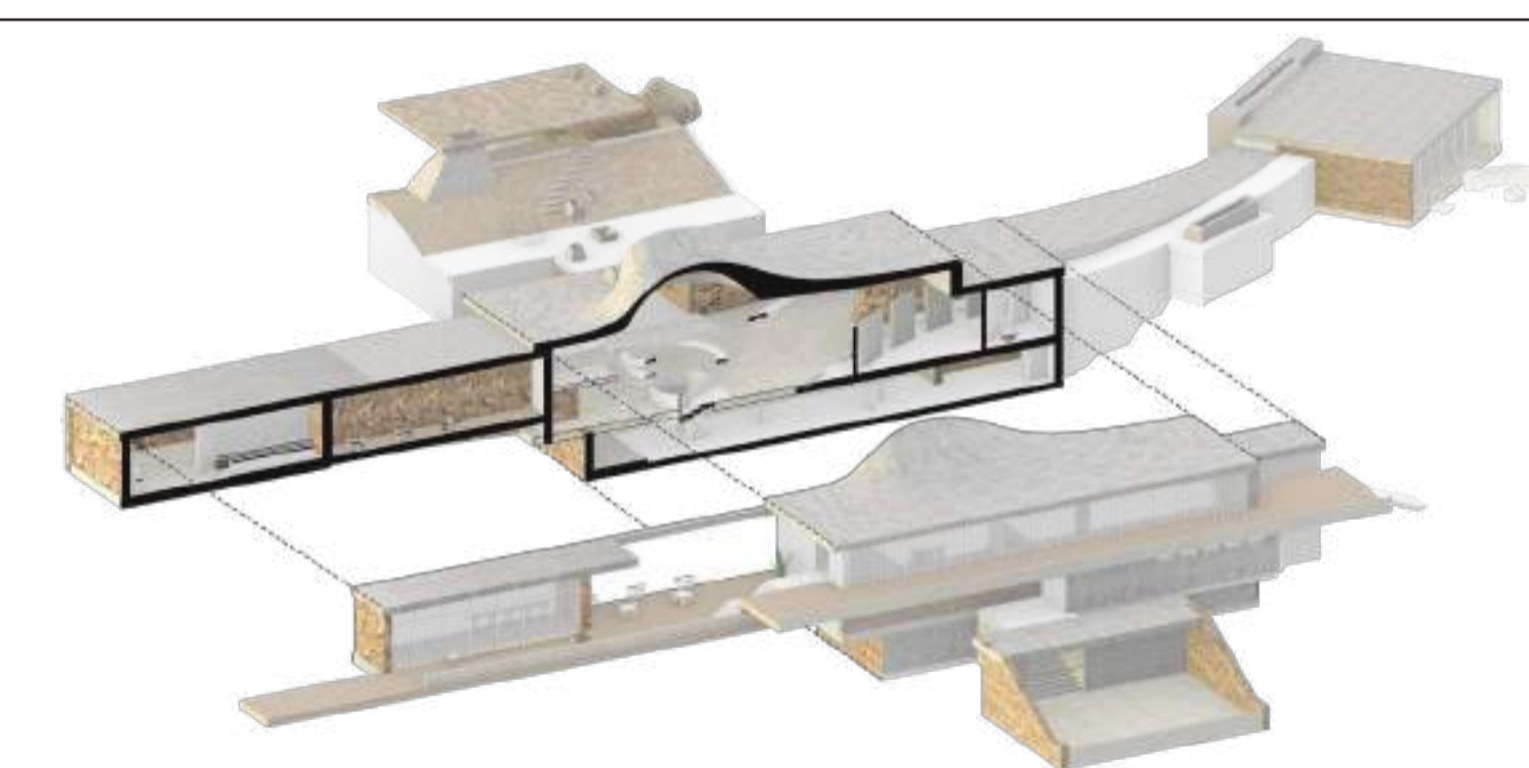
A workshop where mosaic pieces are customized by the visitors

3. Reconnection Drawings (porous circulation, and nature)

4. Observation Drawings (outdoor and indoor viewpoints)



5. Exploded Diagram



6. 3D section, and first basement floor plan 1:600