

2500 a.c.
phoenician civilisation development

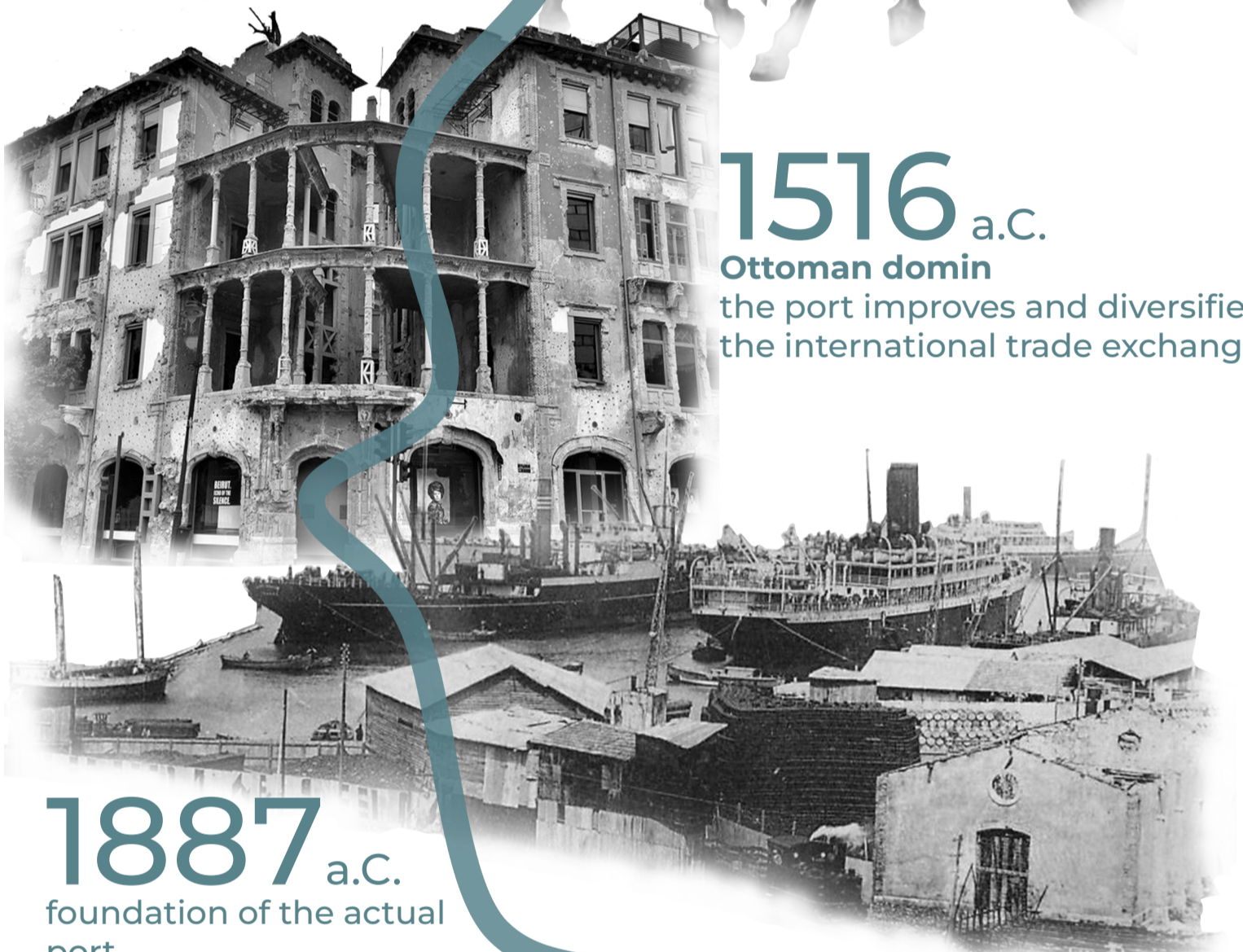


100 a.c.
Roman times
important commercial and economic port

1099 a.c.
first crusades
the port assumes a centrale role in trade between East and West



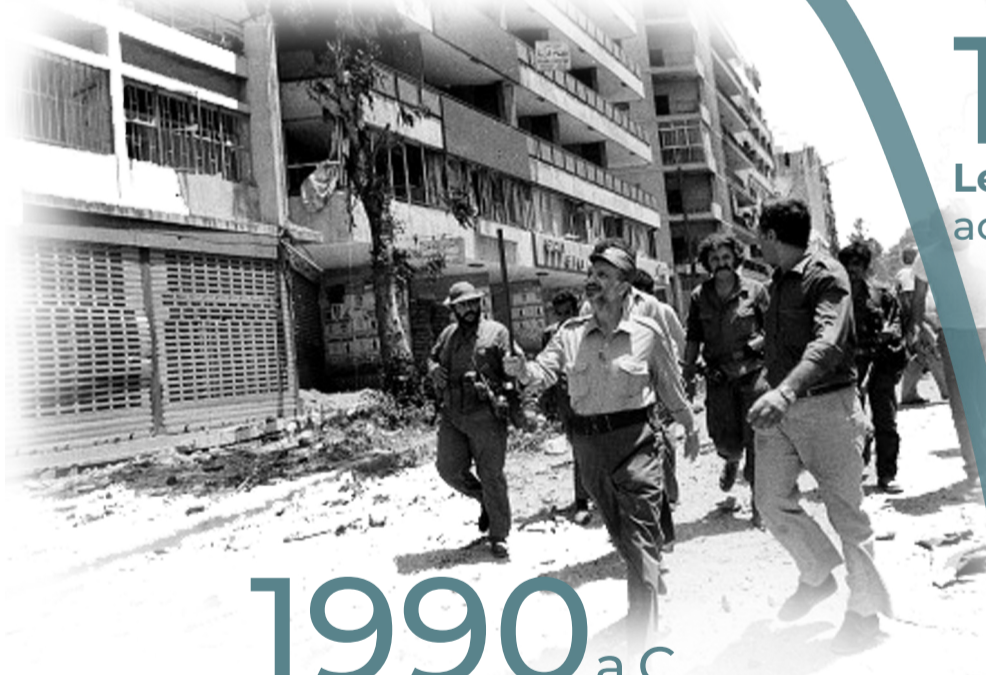
1291 a.c.
Mamluk era
main port of the sultanate



1516 a.c.
Ottoman domin
the port improves and diversifies the international trade exchanges

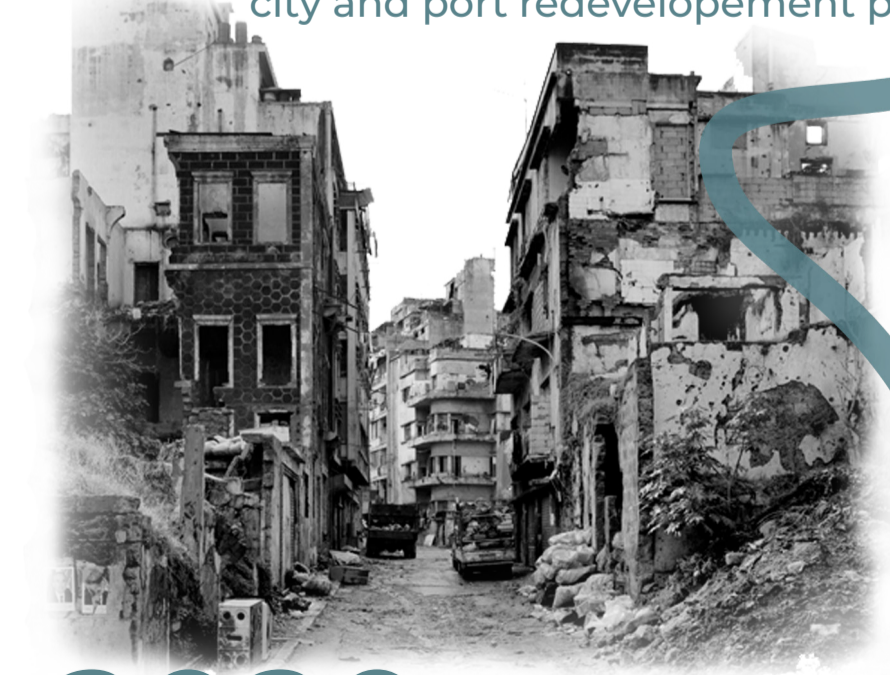
1887 a.c.
foundation of the actual port

1920 a.c.
Lebanon became a French Mandate
access to finance and trade with Europe



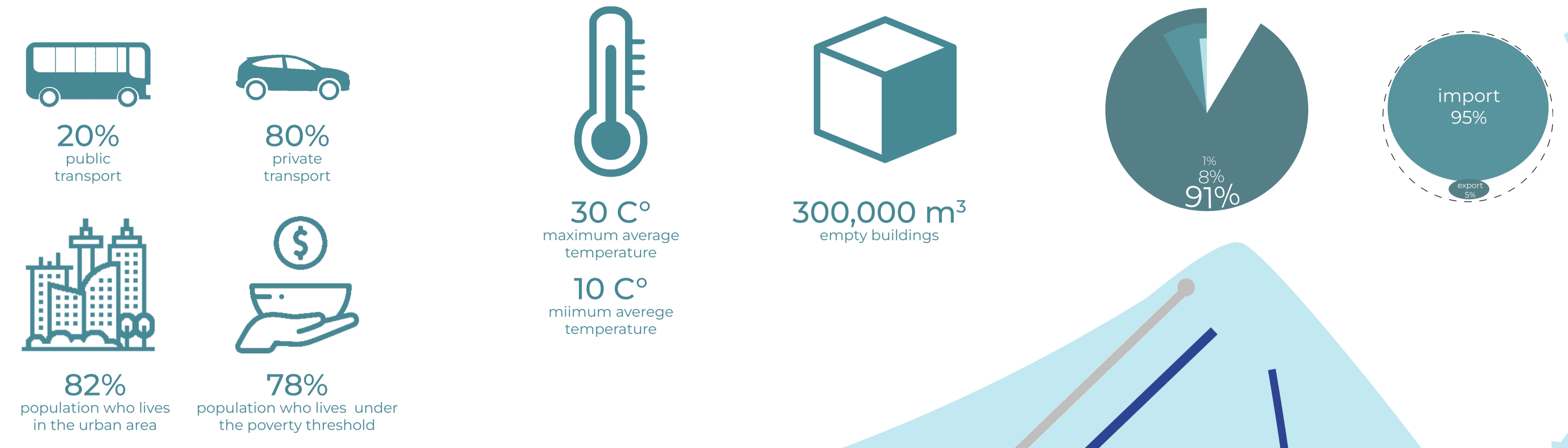
1975 a.c.
civil war
railway and port blocks

1990 a.c.
end of war
city and port redevelopment plan



2020 a.c.
warehouse explosion
the port stops working

BEIRUT in DATA



SOCIAL ATTRACTORS

- point of social interest
- point of storic interest
- point of cultural interest



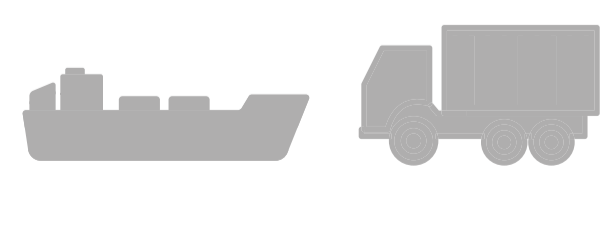
12 public local public spaces public utilities

3 historic monuments

8 museums religious places

FLOW OF GOODS

- naval flow and goods
- primary road routes
- secondary road routes



2.395 annual ships

150.000 annual tir

SURROUNDING GREEN

- public park
- low quality green



95,71% built area

4,22% green area

DAMAGED AREAS

- impracticable areas
- impracticable areas



47% impracticable buildings

53% practicable buildings

TRIPOLI ●

BEIRUT ●