

IBRAHIM KOLLARI

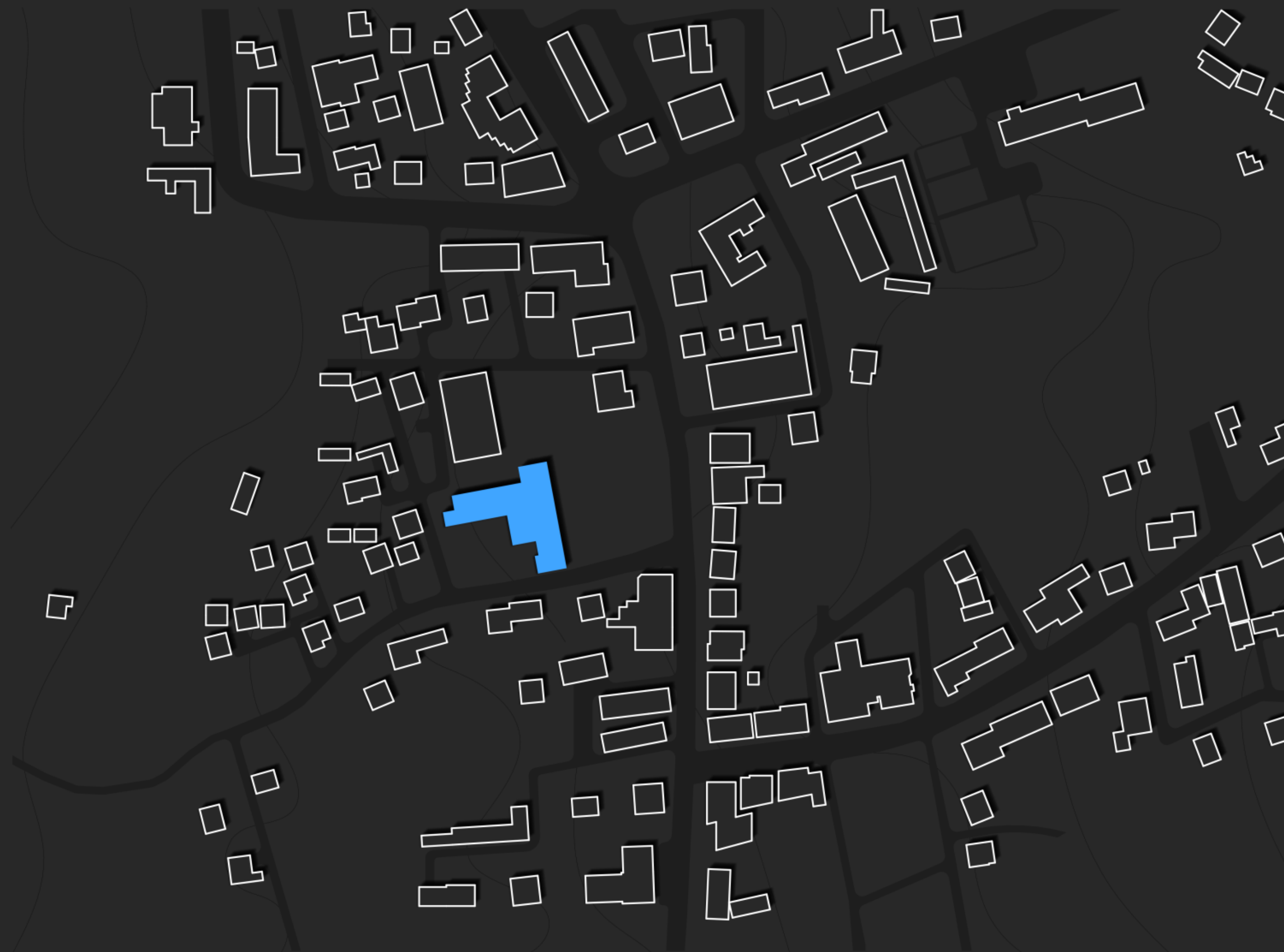
COMPETITION

ART GALLERY

BASED ON THE NEW ARCHITECTURAL DESIGN APPROACH, IT IS BELIEVED THAT DESIGN PRESENTATION FEATURES LIKE SHAPES, COLORS, MATERIALS, OR TEXTURES WILL HELP MAKE THE INTERIOR SPACE MORE EMOTIONAL.

THE NEW ARCHITECTURAL DESIGN OF THE ART GALLERY, WHERE IT IS FUNCTIONALLY HYBRID, INCLUDES ART RECOGNITION, TEACHING, AND LEARNING THAT ENABLES THE PRESERVATION OF CONTEMPORARY AND GRAPHIC ART IN DEDICATED SPACES. THE ART GALLERY FUNCTIONS AS A SPACE TO ENABLE NEW TALENTS, IN THE FIELD OF ART AND DESIGN, EXPOSURE TO THREE-DIMENSIONAL ART INSTALLATIONS IN THE SPECIFIED AREAS OF THIS BUILDING. THE INFRASTRUCTURE, WHICH IS DISPLAYED IN DARK GREY IN THE SITE PLAN, GRAPHICALLY PRESENTS THE ACCESSES TO THE FACILITY, CONNECTIONS, AND ROADS THAT NEED INTERVENTION AND FURTHER CHANGE. THE FUNCTION OF THE EXISTING BUILDING, SPECIFICALLY, THE GROUND FLOOR INCLUDES A MINI-LIBRARY, VERTICAL COMMUNICATION, LOBBY, OFFICES, MINI-KITCHENS, AND THE HALL FOR HOLDING CONCERTS AND ARTISTIC PERFORMANCES. THE FIRST FLOOR OF THE BUILDING IN ISTOG IS FUNCTIONALLY DIVIDED INTO OFFICES, A SHARED KITCHENETTE, MEETING ROOMS, AND SANITARY FACILITIES. THE SECOND FLOOR IS ALSO FUNCTIONALLY DIVIDED INTO OFFICES, A SHARED KITCHENETTE, MEETING ROOMS, AND SANITARY FACILITIES.

THE URBAN SILHOUETTE OF ISTOG SIGNIFIES THE NEED TO FURTHER REORGANIZE, REPOSITION AND INTERVENE IN THE IRREGULAR PLANNING OF BUILDINGS TO FURTHER REORGANIZE, REPOSITION AND INTERVENE ON BUILDINGS SO THAT THE QUALITY OF ARCHITECTURAL FUNCTIONING IN THE URBAN CONTEXT INCREASES.





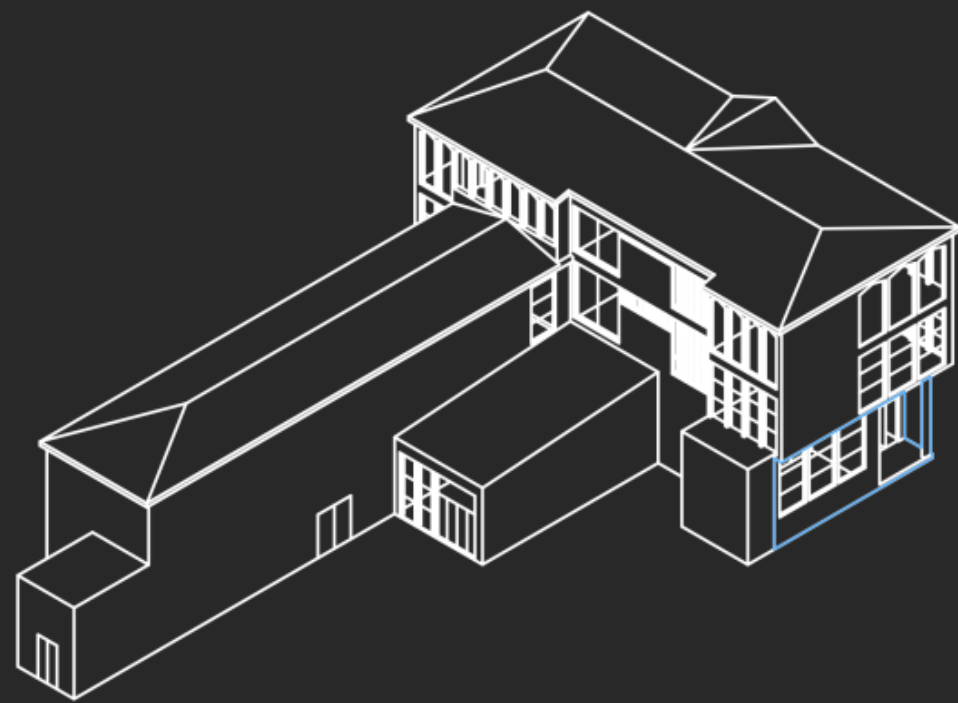
DESIGN PROCESS

THE MOST COMMONLY USED MATERIALS IN THE INTERIOR DESIGN OF THIS PROJECT ARE CONCRETE, EPOXY FLOORING, WOOD, AND PLASTERING. THE FAVORABLE POSITION, THE LOCATION OF THE BUILDING OF THE ART GALLERY IN ISTOG, INCREASES THE QUALITY PARAMETERS AND FAVORS THE ARCHITECTURAL DESIGN FOR INTERIOR DESIGN IN THIS SPACE.

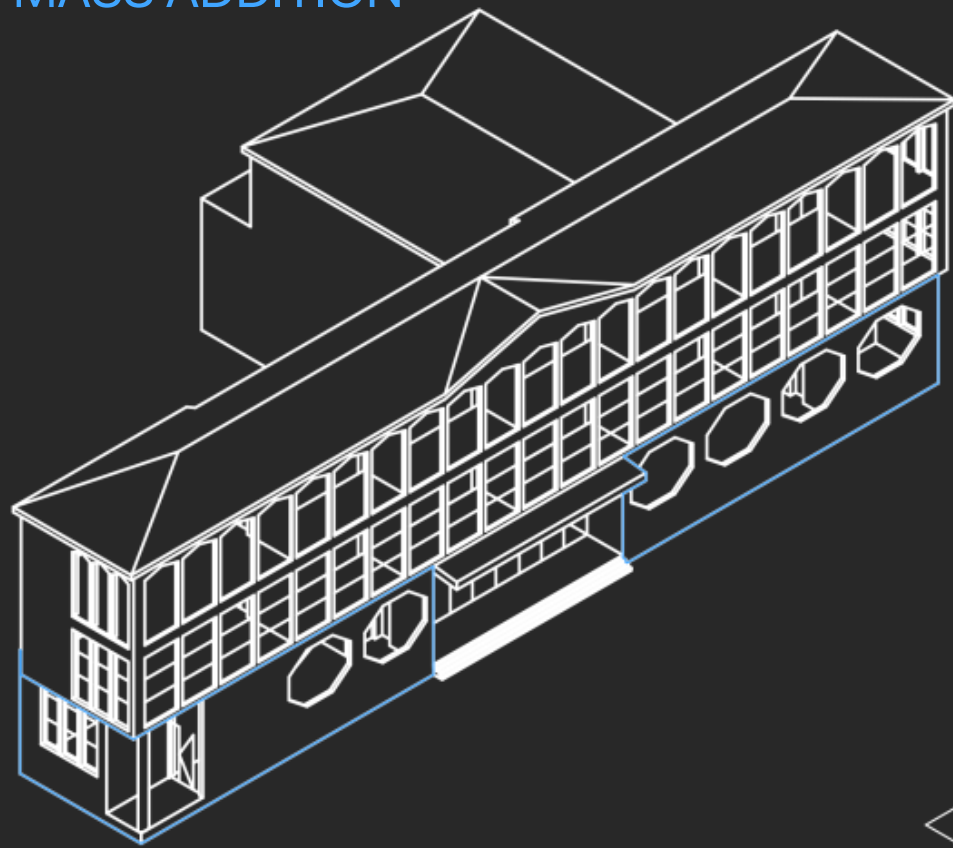
FOR THIS NEW ARCHITECTURAL INTERIOR DESIGN, THE FUNCTION IS AS FOLLOWS: ON THE GROUND FLOOR IS PLANNED FOYER, RECEPTION, BAR, SANITARY SPACES, KITCHEN, LIBRARY, OFFICES, SPACE FOR ART MOBILITY, AND SPACE FOR INSTALLATIONS AND THREE-DIMENSIONAL ART. ON THE FIRST FLOOR IS INTENDED FOR ART GALLERY, OFFICES, ART CLASSES, MUSIC STUDIO SPACE, INFORMATION AND GUIDE, CAMERA OBSERVATION SPACE AND MORE. THE SECOND FLOOR IS PLANNED STAY AND WAIT SPACE, LEISURE SPACE, EAT AND DRINK SPACE, OFFICE FOR CEO, MEETING ROOM, AND ART STORAGE AREA. THE PROCESS OF ARCHITECTURAL DESIGN, FOR THIS BUILDING, BEGINS FROM THE SPACE CHANGEOVER; SPACES ARE TO BE REMOVED AND INTERVENED FOR THE PURPOSE OF ADDING ADDITIONAL FUNCTIONS. IT STARTS WITH THE FUNCTION OF AREAS FOR MODIFICATION, AREAS FOR REMOVAL, AND ENDS WITH THE MODIFIED MODEL.

MOST CONSIDER WOOD AS THE MOST EMOTIONAL MATERIAL, WHICH I HAVE CONSIDERED IT AS THE MOST PROMINENT WITHIN THE INTERIOR DESIGN. THIS DESIGN IS ALSO A RESULT OF THOROUGH RESEARCH FOR IDENTIFICATION OF THE EMOTIONAL CHARACTERISTICS, UNDERSTANDING TWO-DIMENSIONAL AND THREE-DIMENSIONAL GEOMETRIC SHAPES, RESEARCHING COLORS AND TEXTURES, AND THEN MEETING EMOTIONAL NEEDS BY INCLUDING THEM IN THE DESIGN PROCESS.

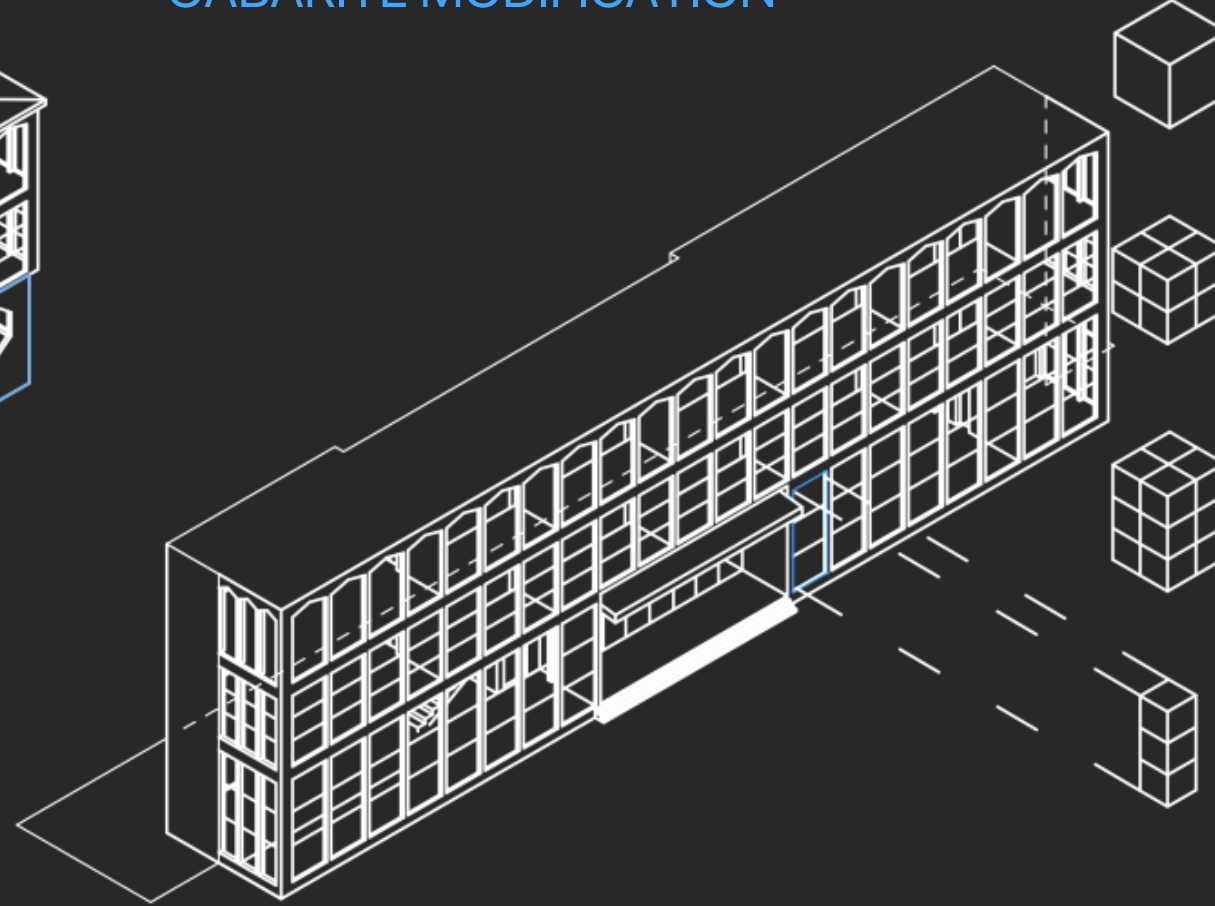
MODIFICATION



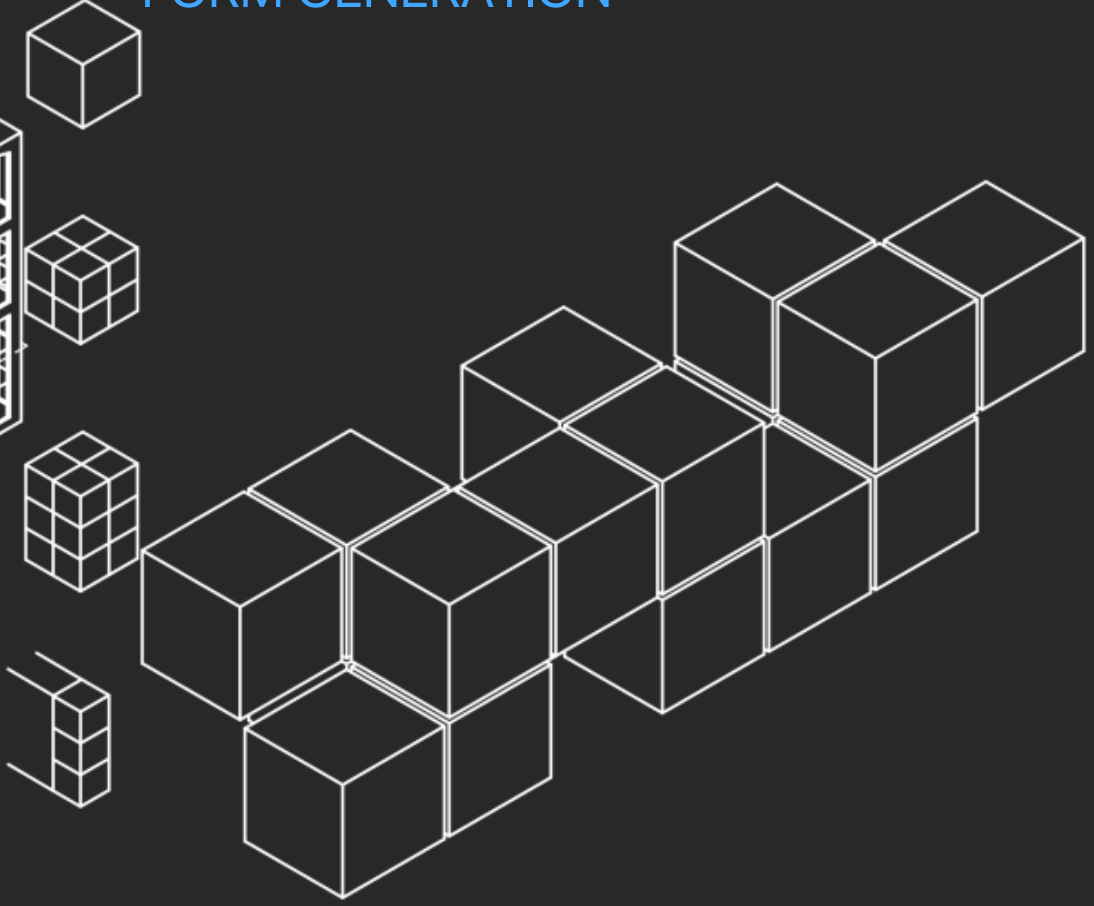
MASS ADDITION



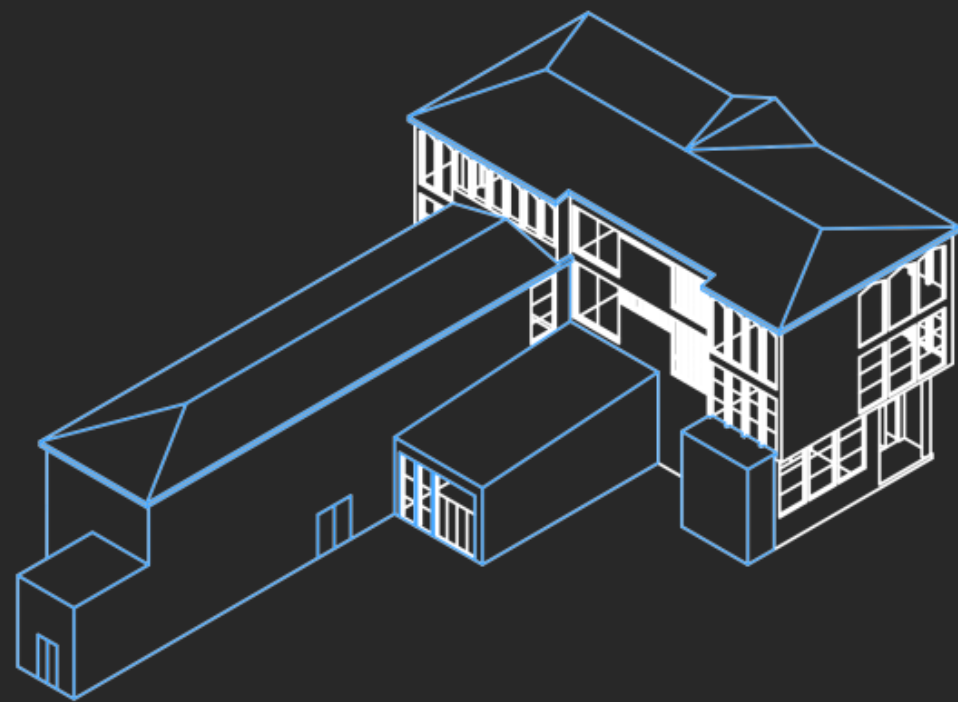
GABARITE MODIFICATION



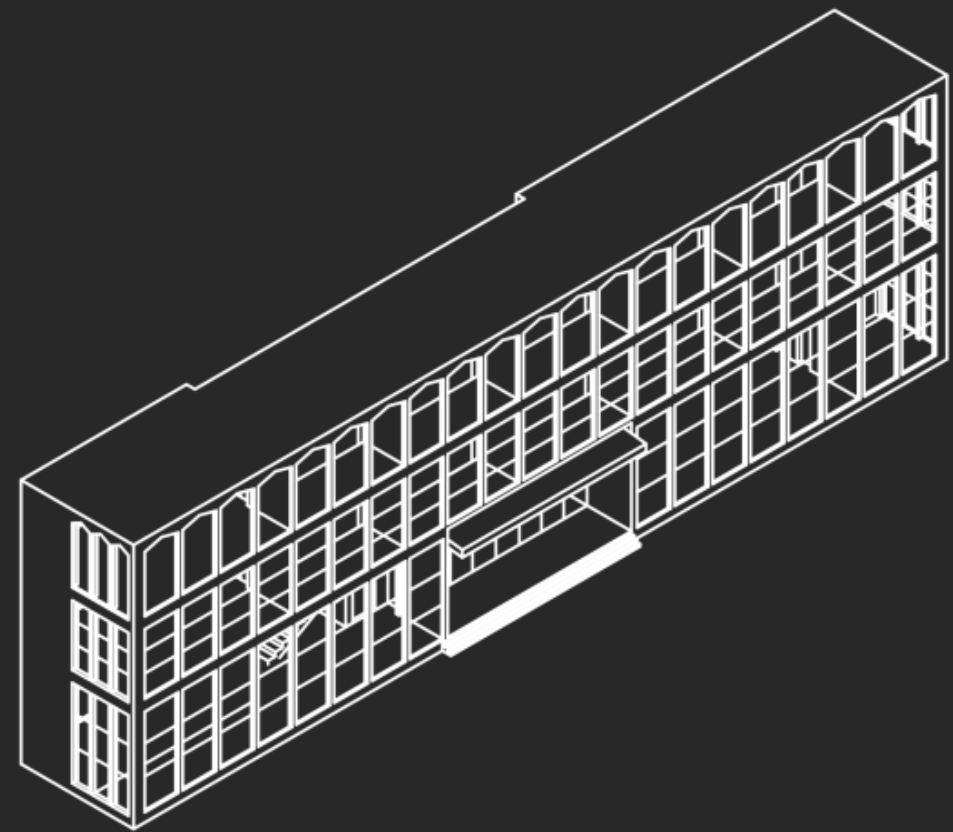
FORM GENERATION



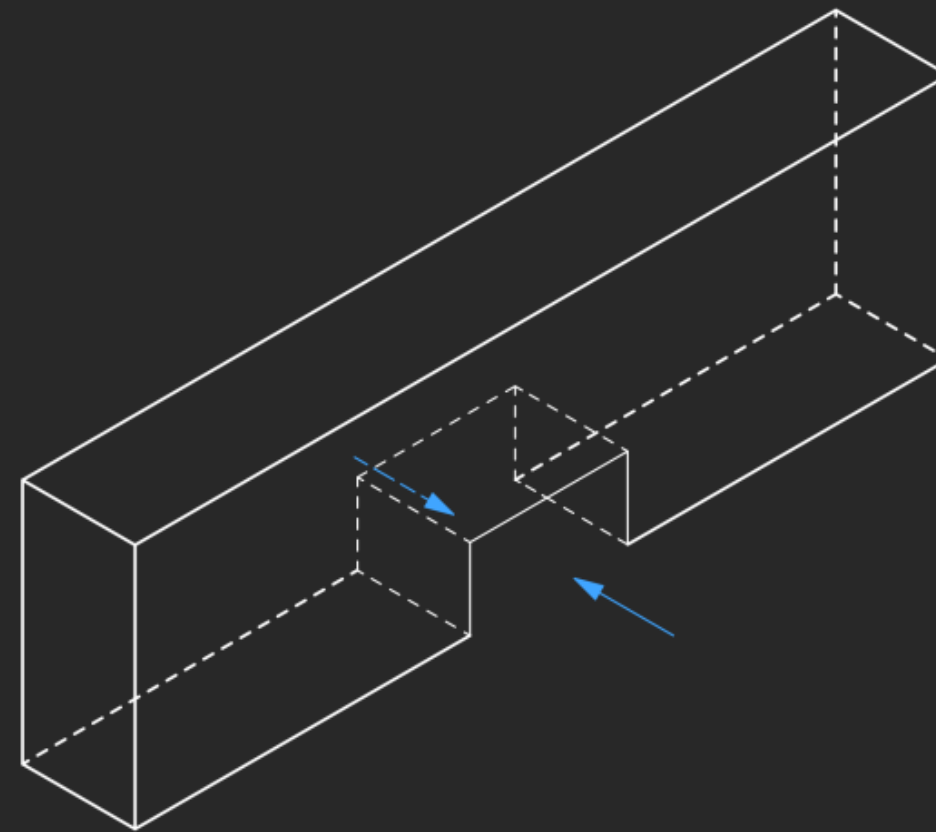
SUBTRACTION



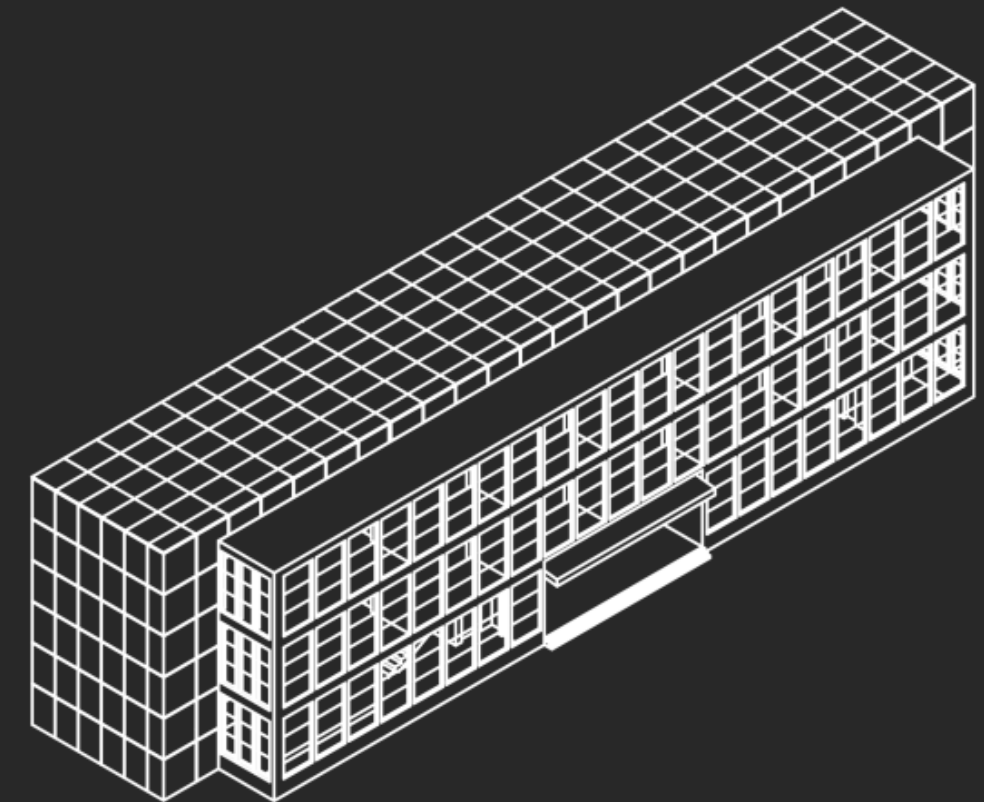
MODIFIED MODEL

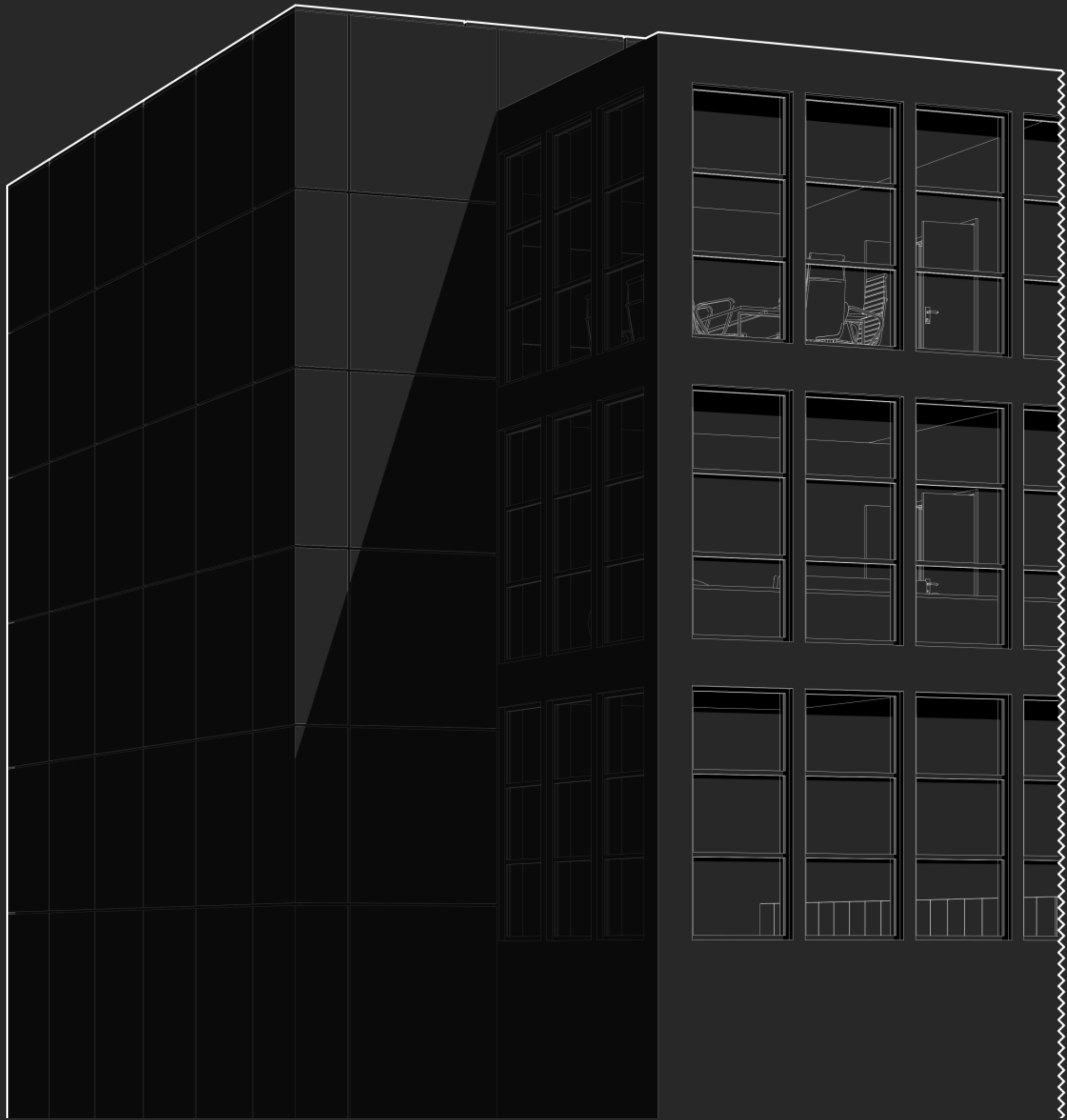


ACCESS AND ENTRANCE

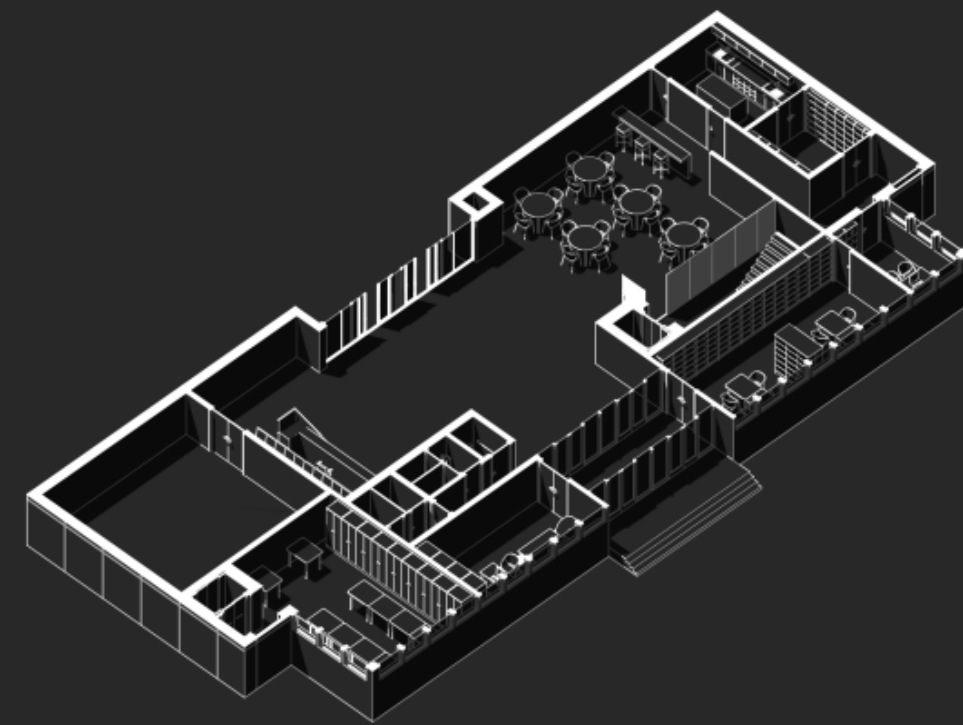


FINAL DESIGN

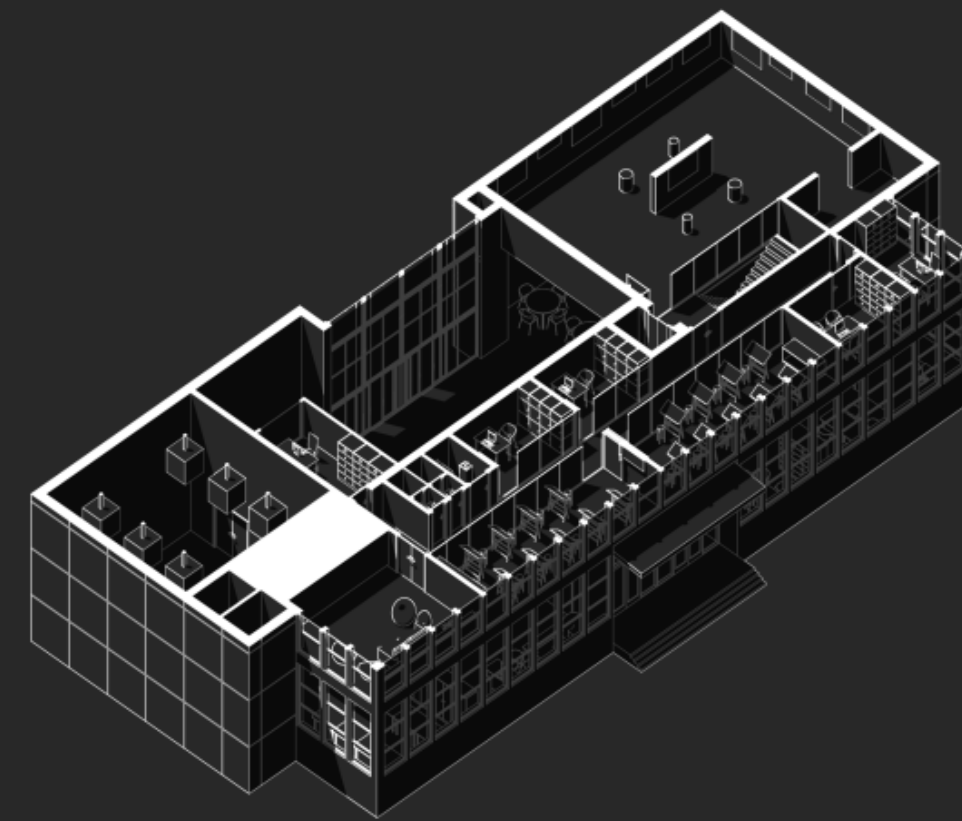




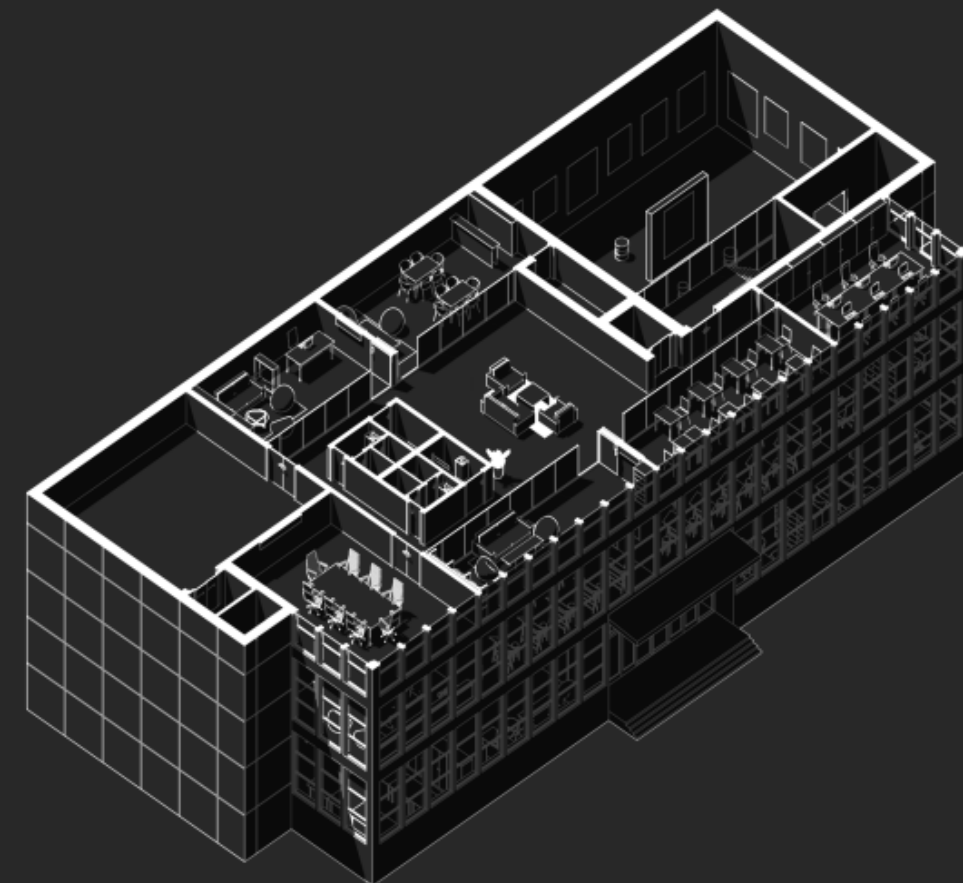
GROUND FLOOR



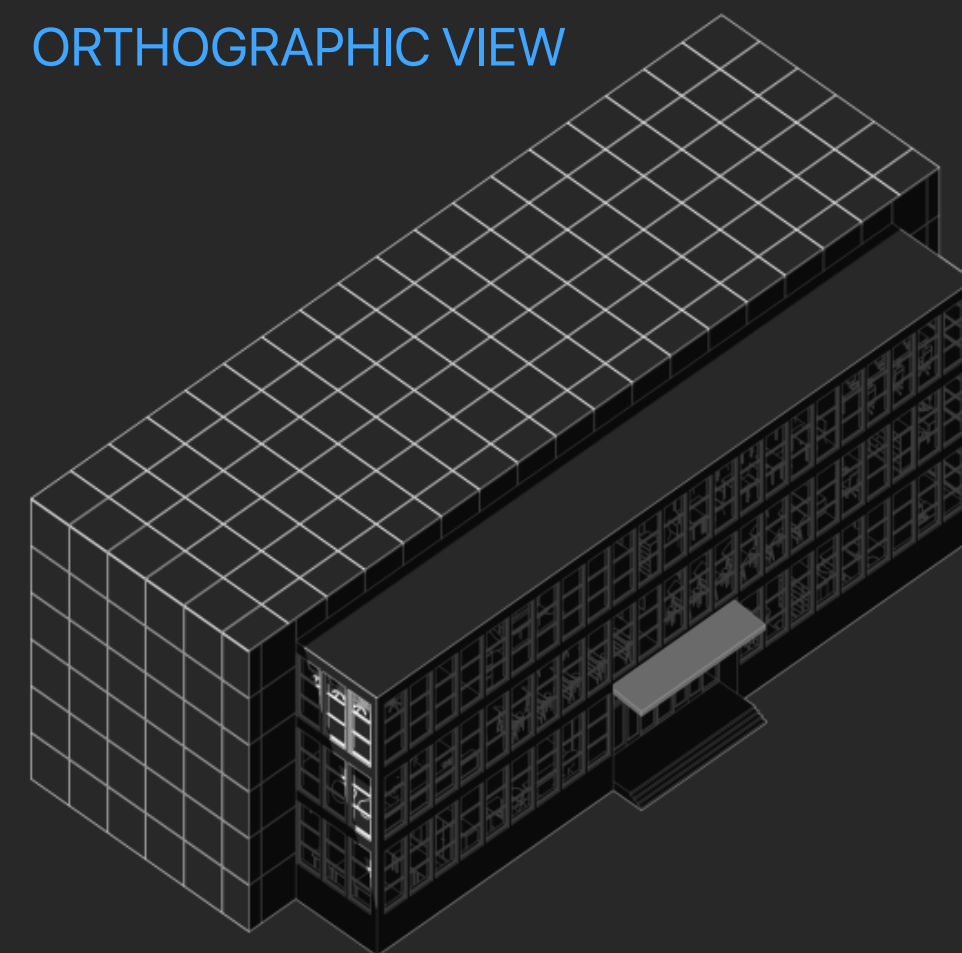
FIRST FLOOR



SECOND FLOOR

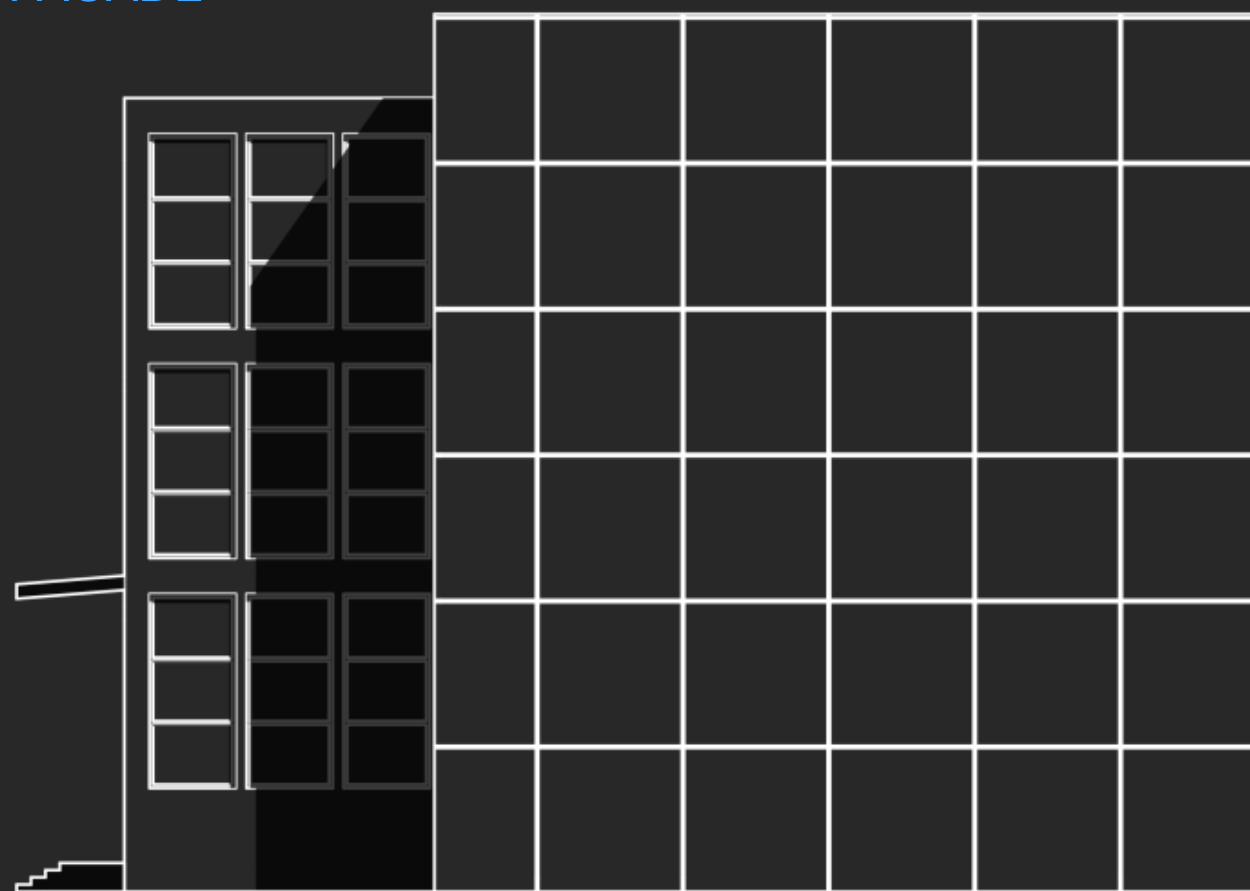


ORTHOGRAPHIC VIEW





FACADE



SECTION 1



SECTION 2













