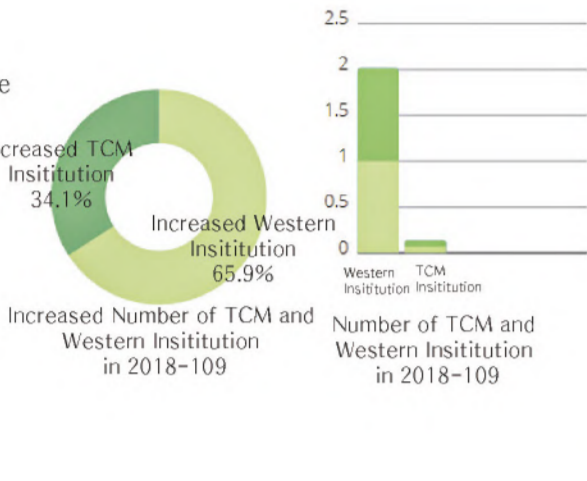




BACKGROUND

Western TCM hospitals or centers are rare in China. According to China National Medical Administration, the number of general hospitals is currently about 7,000. Less than the number of traditional Chinese medicine hospitals.



Lots of people have a misunderstanding of TCM, especially the young generation. Youth Ville aims to analyze our culture by promoting TCM to young people in a new way.

SITE LOCATION

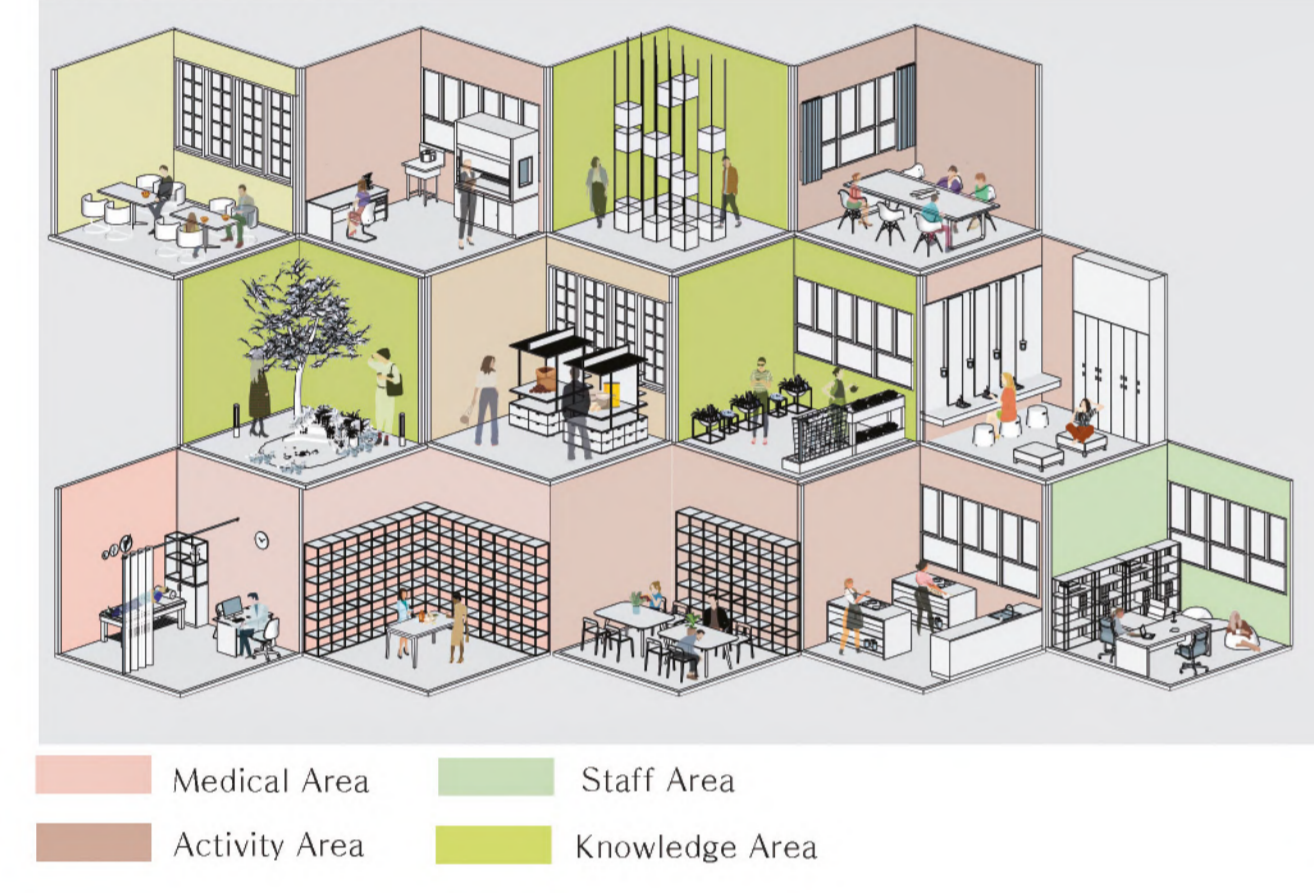
The site is located at No. 1038, Kangshan Road, Pudong New District, Shanghai, China.



The surrounding buildings are mostly industry parks and some residential areas. The location is not very close because it is a few hours' drive from the city center.



SPACE DIAGRAM

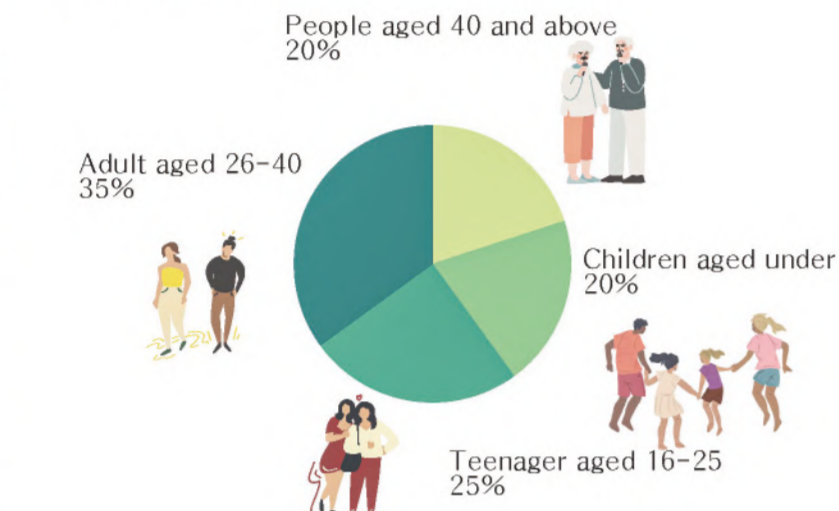


USER ANALYSIS

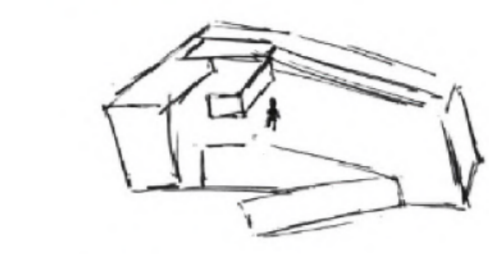
**Primary User:**  
Young people who lack knowledge of TCM and are interested in introducing/immersive design (Local Citizens, Visitors, Foreigners, aged from 15-25)

**Secondary User:**  
Adults who work in this center to ensure the operation of the program (Staff Doctors, Cleaners, aged from 20-40)

COMMUNITY ANALYSIS



CONCEPT

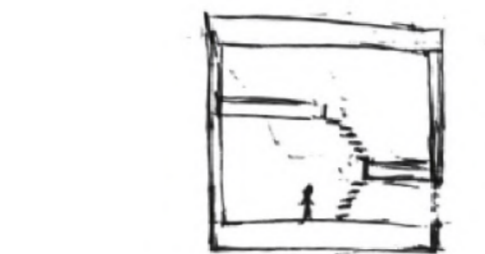


**Collective Space**  
Collective spaces are used to connect the public area and enable more interaction within the space.



**Interaction**  
New technologies offer functionality and interaction capability embedded within decorative elements inside the building.

AREA DIAGRAM



**Interlayer Spacing**  
Interlayer spacing is built inside the experience area to allow more engagement.



**Nature-connected**  
Using large openings or glass and bringing the natural elements inside to create a Chinese Garden atmosphere.

INSPIRATION

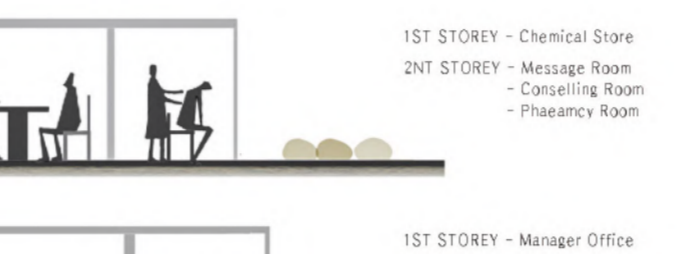


There are four main types of spaces: medical area, activity area, staff area, and knowledge area.

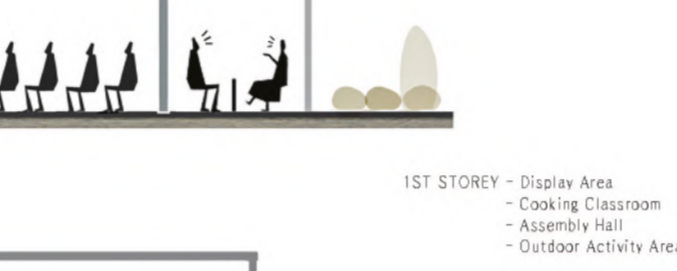


There are four artificial trees in the center, four in the central garden and one in the restaurant. These artificial trees are placed to show the connection between TCM generations.

CONSTRUCTION DETAIL



1. Laminate 2. Artificial Grass 3. Glass 4. Wall Panel with Texture 5. Ash Hardwood Flooring 6. Concrete 7. Metal Frame 8. LED Greenhouse Park Panel



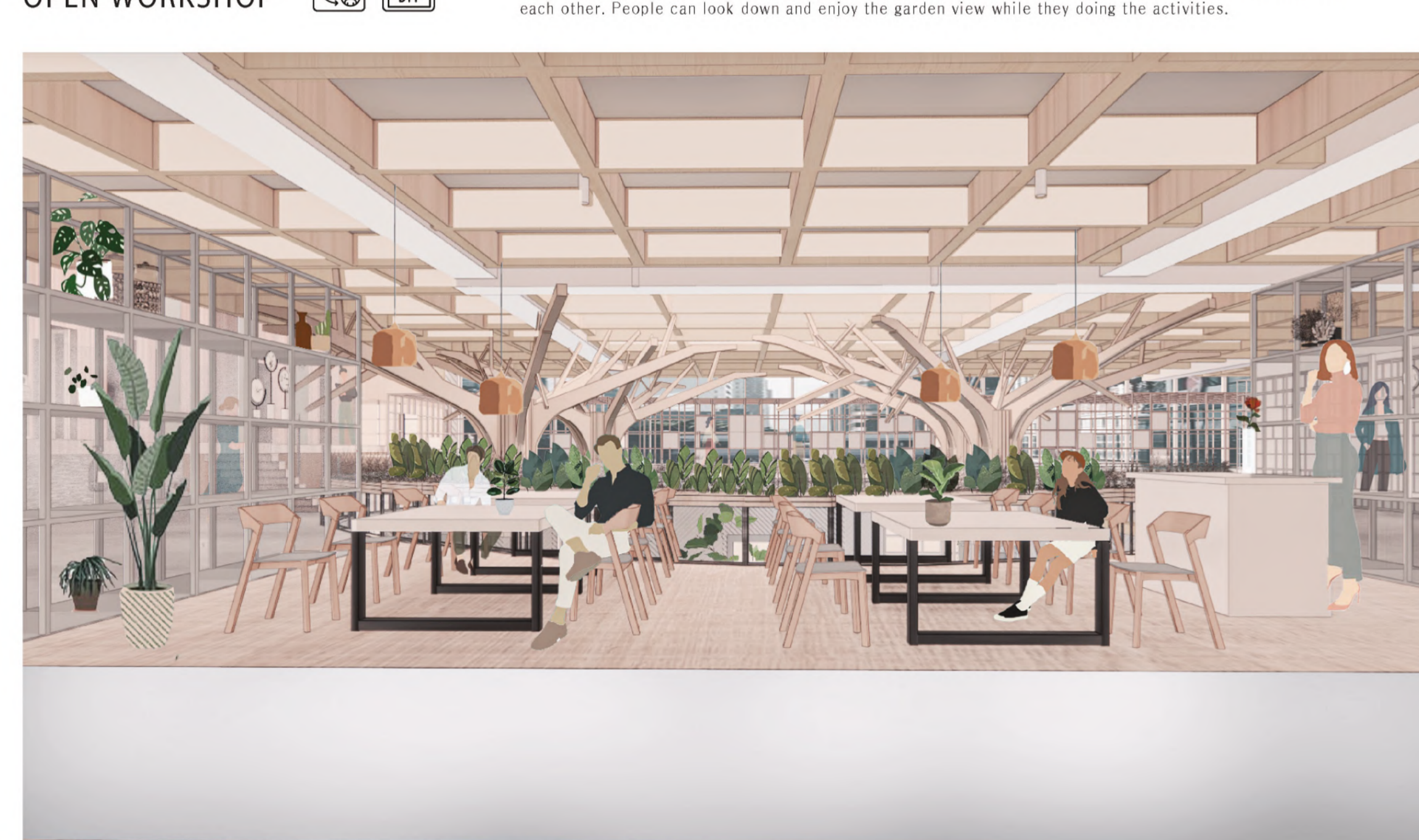
There are four artificial trees in the center, four in the central garden and one in the restaurant. These artificial trees are placed to show the connection between TCM generations.

FOCUS AREA EXPLOSION VIEW



OPEN WORKSHOP

The open workshop is a place for people to experience producing Chinese medicine in two simple ways: planting herbs and grinding and mixing TCM herbs. This space allows people to interact and connect with each other. People can look down and enjoy the garden view while they are doing the activities.

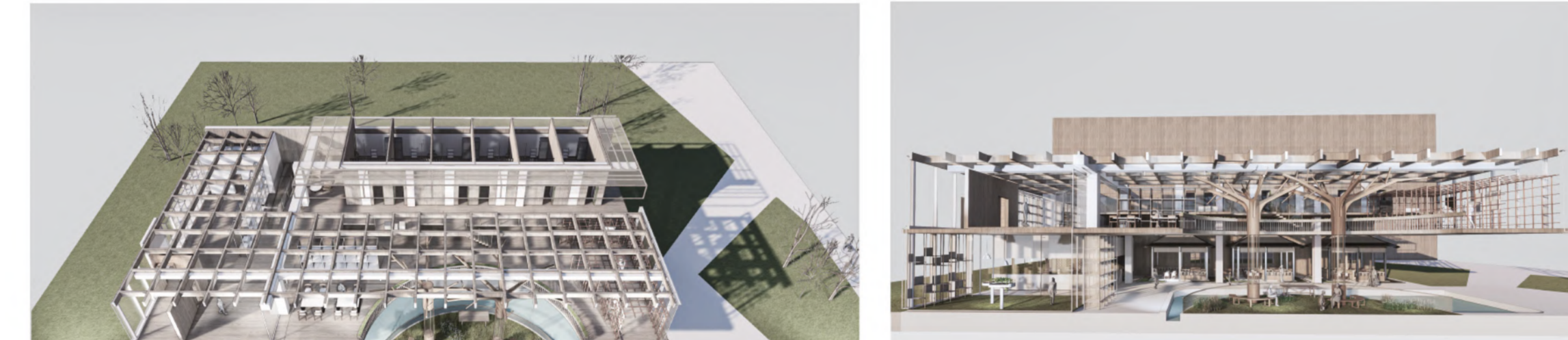


HERB HOUSE

The herb house is filled with Chinese herbs for viewing. If visitors are fond of those herbs, they may go up to the 2nd floor open workshop to grow their own.

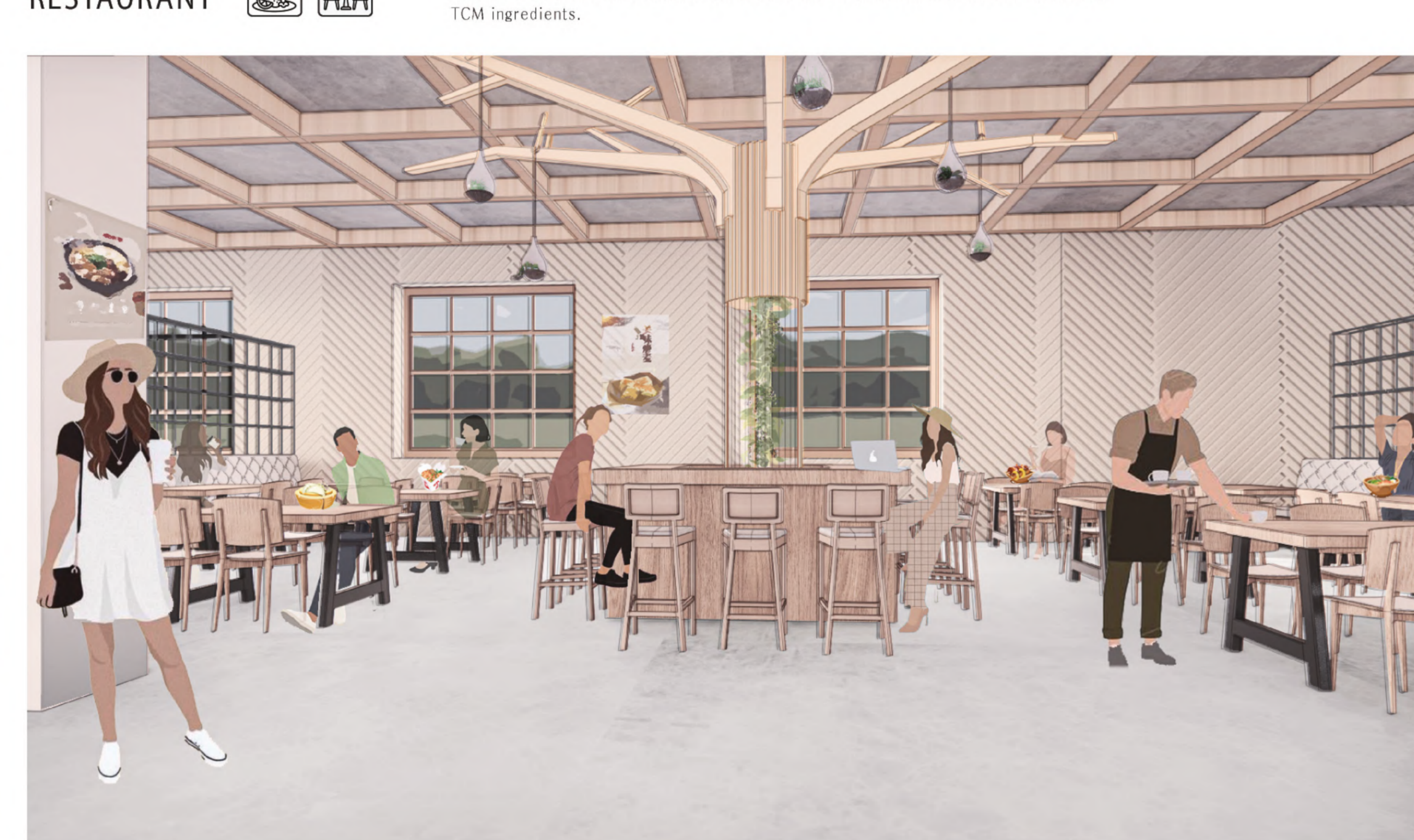


DIGITAL MODEL



RESTAURANT

The restaurant has one of the artificial trees with plants inside to remind people that our food comes from nature. Customers will be provided with cuisine containing TCM ingredients.

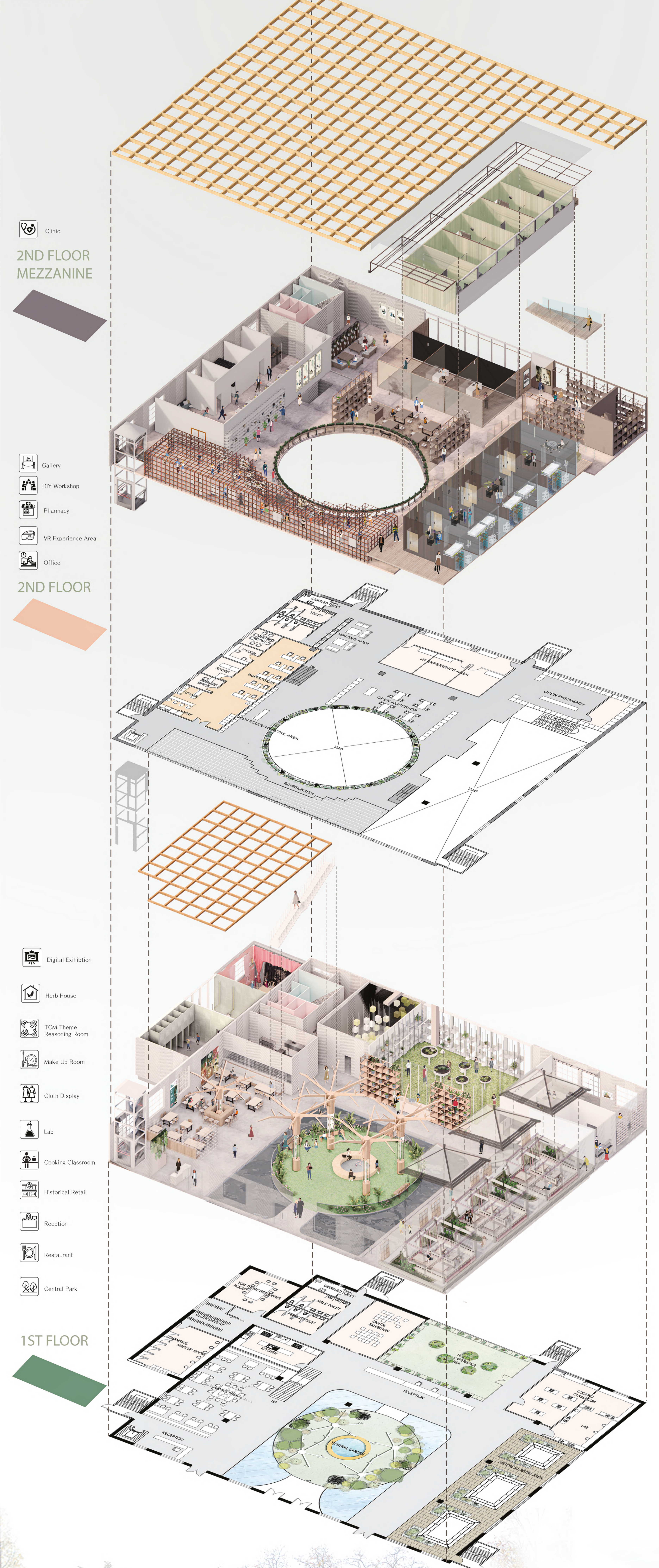


FRAME GALLERY

This open gallery uses a metal frame to display TCM exhibits. People can walk inside to see the gallery and post them on Instagram.



EXPLOSION VIEW



SECTION

