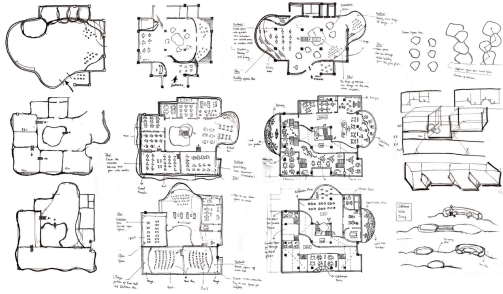


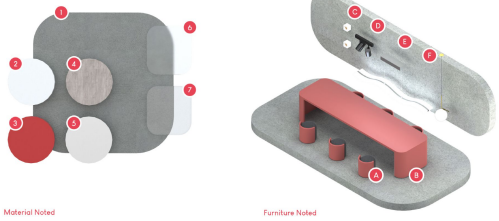
## ISOMETRIC FLOORPLAN

Include floor plans of all floors presented with 2D and 3D views. Information is all about space planning. The red symbol inside the view is presented as an activity in space.

## DESIGN PROGRESS



## MATERIAL BOARD



### Material Noted

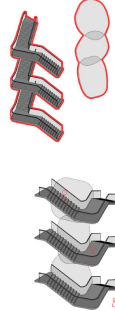
- 1 Clay concrete
- 2 White painted wood laminate
- 3 Red painted wood laminate
- 4 White plywood
- 5 Blum aluminum
- 6 Translucent polycarbonate
- 7 Crystal glass

### Furniture Noted

- A Fabric chair with wooden back painted with red
- B Wood table painted with red
- C Recessed light
- D Track light
- E Wave pendant light
- F Sphere pendant light

## DETAIL DIAGRAM

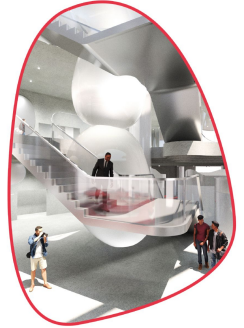
### Sculpture Staircase



The organic shape connect with the staircase made of translucent polycarbonate.

The stair case made of concrete with the staircase made of aluminum to create the reflection.

Sculpture staircase space is main area of the building. It's connect all the floor and bring outside to the space. By the nature light from the design to the organic shape and the staircase.



### Creative Thinking and Collaborate



Seating area made with custom fabric and wood base, painted with red and gray.

Area designed with two round shapes connect, use wood material for the base and for the top use translucent glass.

Creative thinking and collaborate space have in different area in studio, support employee can work and create ideas together, in different field.



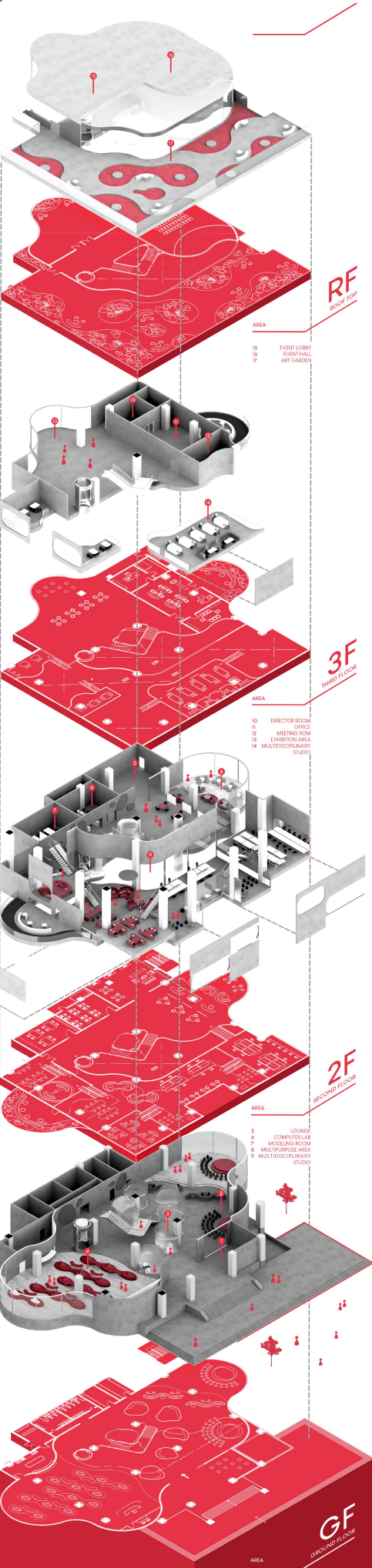
## DETAIL DRAWING



### MEZZANINE LEVEL WITH STAIRCASE DETAIL

Mezzanine level with staircase designed to show the connect of different space in building. create the connection for the user in the area. From one point we can see other area.

### GLASS HANDRAIL DETAIL



- 1 ART GALLERY
- 2 WORKSHOP
- 3 INTERACTION SPACE
- 4 CAFE AND COWORK