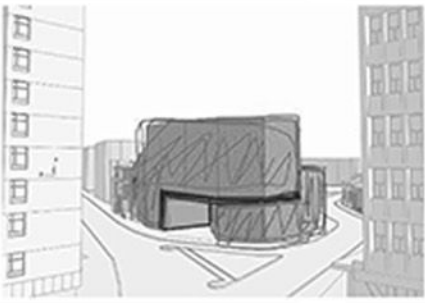




HOTEL

Grivita Street, Bucharest, 2022





The concept of the project aims to create a transition from one tissue to another, improving the visual perception of the context.
The volume consists of two volumes of different heights that intersect, adapting to the height regime of the neighboring buildings.



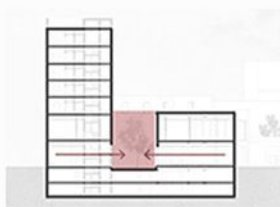
The facade is segmented vertically, highlighting surfaces proportional to the facades of adjacent buildings.
The horizontal register formed by the ground floor and the mezzanine directs attention to it, through its massiveness and materiality. Thus, the upper floors do not alter the visual perception rendered by the height regime of the context



The main access is located on the main facade, while the secondary access, respectively the car access, is on General Budisteanu street.



The ground floor and mezzanine are public spaces, with a restaurant, lobby and conference room. The rest of the hotel consists of rooms and apartments.



On the ground floor there is an inner courtyard that helps the dialogue between the restaurant and the lobby

















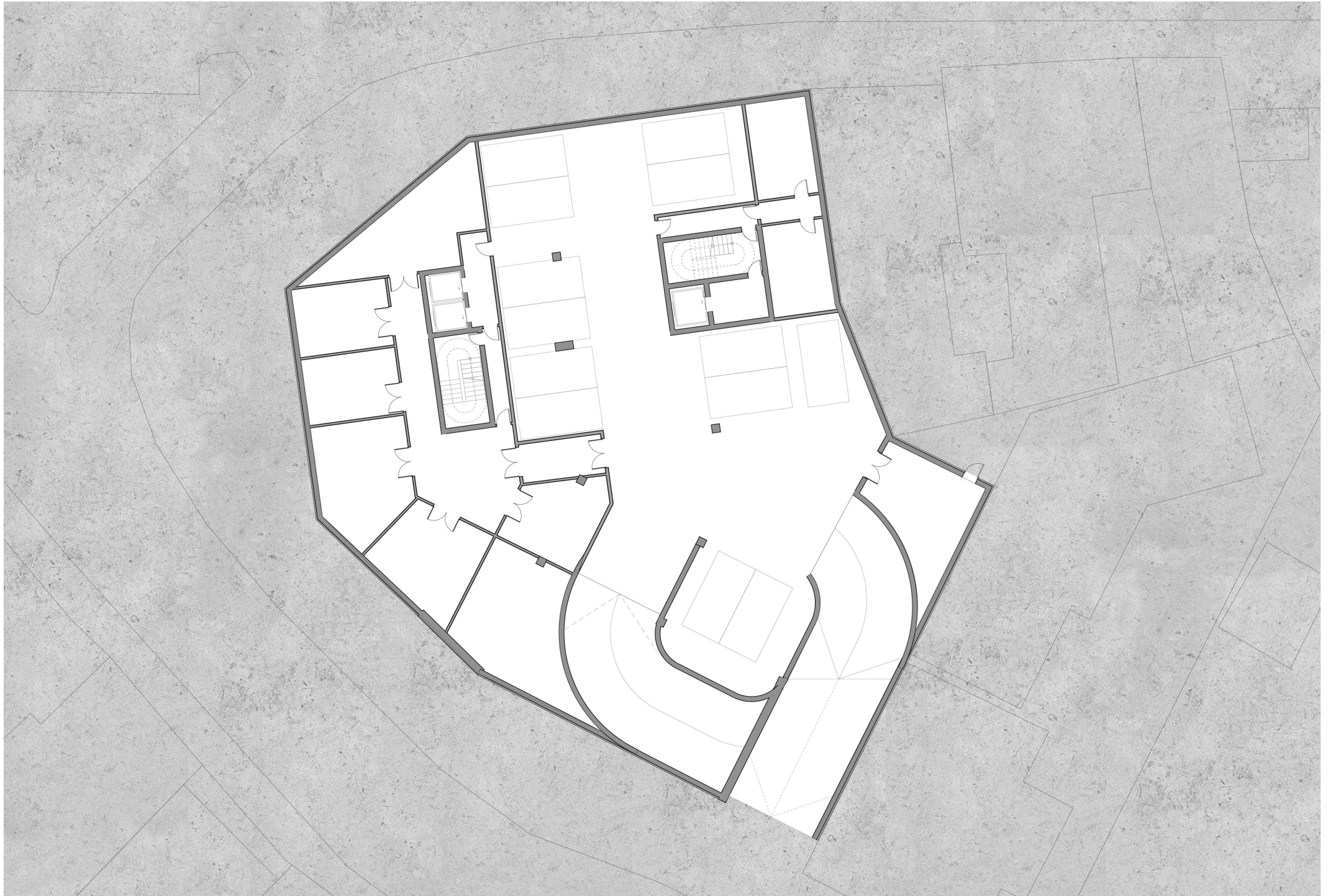


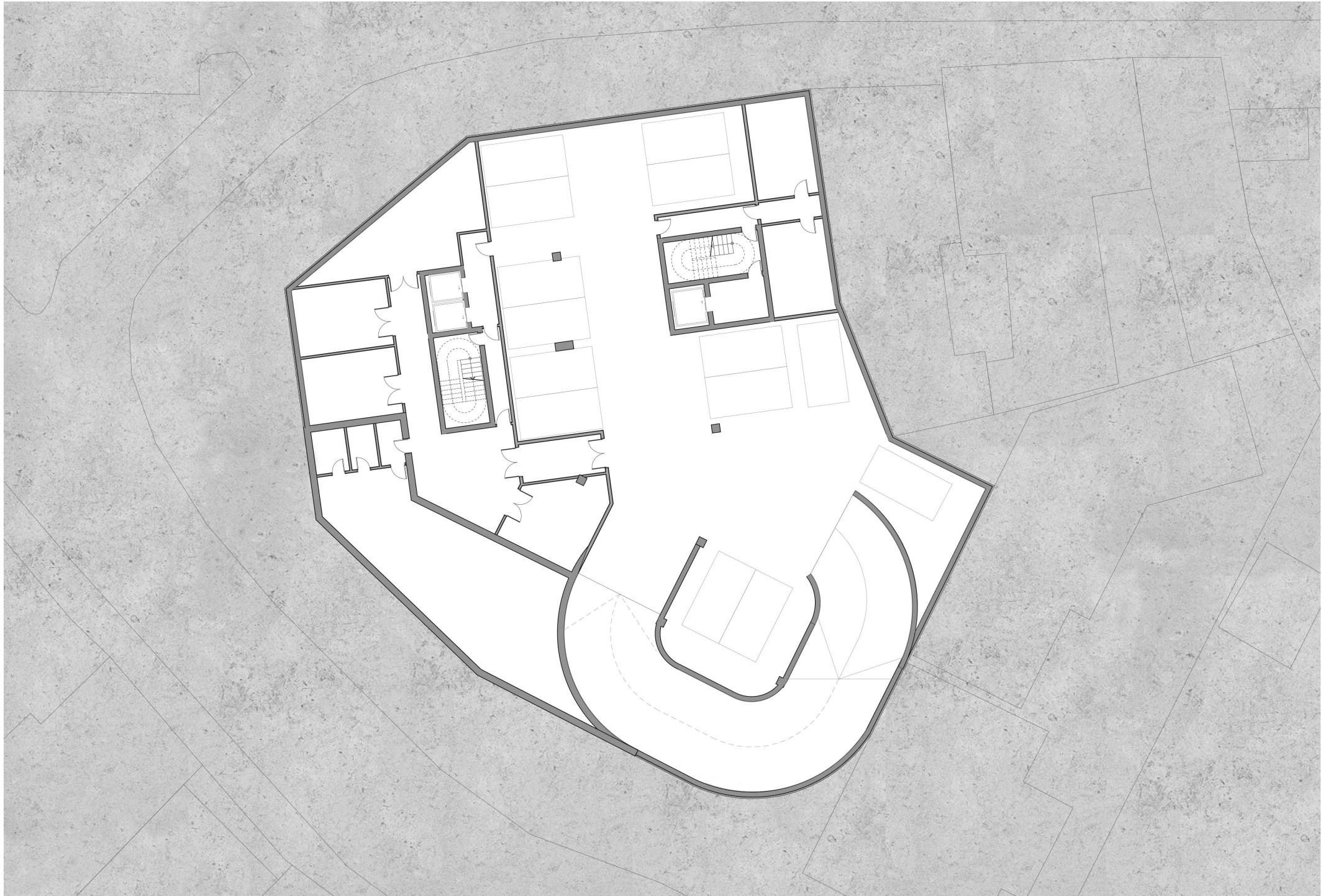
ground floor













section A



section B



north elevation



south elevation