

# RENOVATION

★ The reconstructed building is located on Universitetskiy Lane within walking distance from the sights of Rostov-on-Don, DSPB, the main building of SFU, Musical Theater, Puppet Theater, DSTU building. The 1-447 series building is made of brick, built in the 1970s.

During the renovation of the building, special attention was paid to improving the comfort of living, as a result of which the apartments were completely redeveloped, their area was increased, balconies were expanded, an elevator was added. In addition, the 6th floor was designed, which made it possible to create two-level apartments with large verandas.



PLACE  
Rostov-on-Don

DONE BY  
me

YEAR  
2021



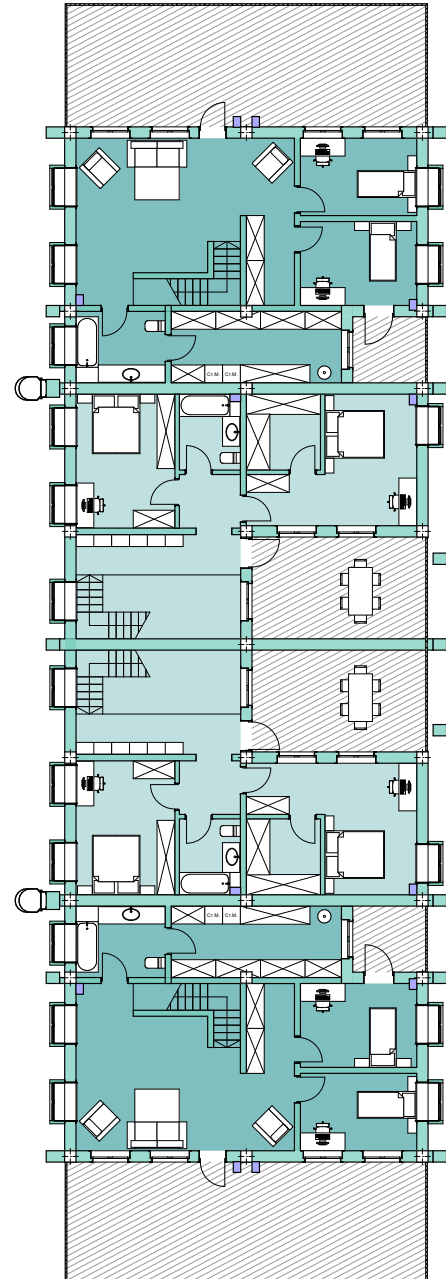
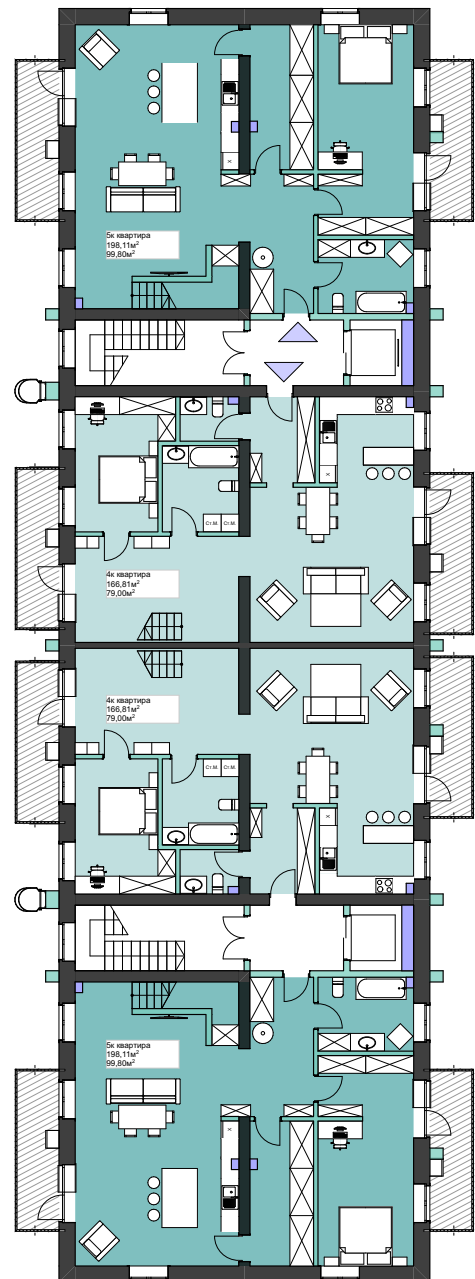
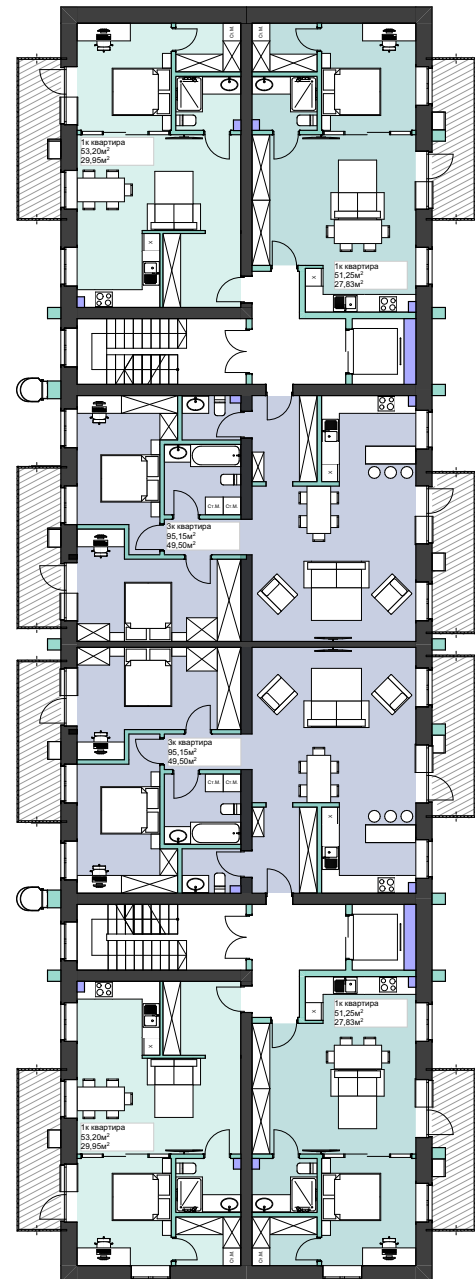
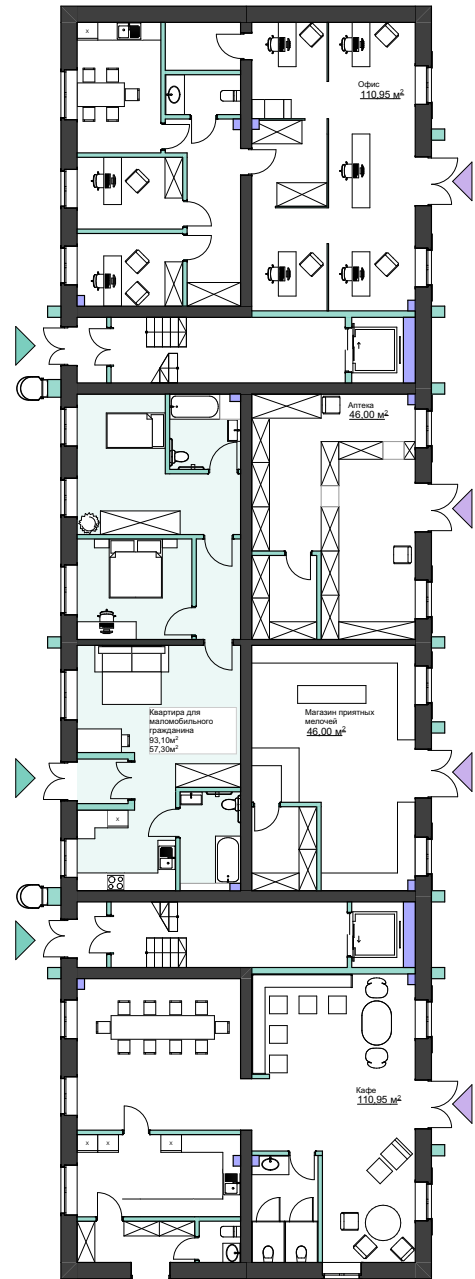


1 FLOOR

TYPICAL FLOOR

5 FLOOR

6 FLOOR



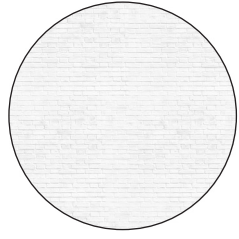
**01**  
On the ground floor there are:  
shop,  
pharmacy,  
cafe,  
office , apart-  
ment for people  
with limited  
mobility

**02**  
Residential  
standard floor  
with superior  
apartments.  
There are 2  
treshki and 4  
odnushki  
located here.  
Each of the  
apartments  
has a balcony.

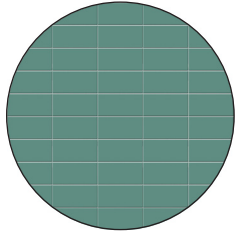
**05-06**  
On the fifth and  
sixth floors  
there are 4  
duplex  
apartments of  
different sizes.  
The first floors  
of the apart-  
ments have a  
public function,  
the  
second - private.  
Each of the  
apartments  
has a spacious  
terrace.

■ New walls  
■ Old walls

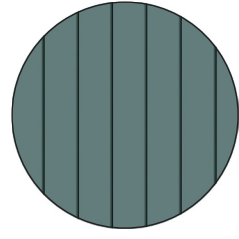
Plastered brick



Ceramic Facing Brick:  
Recke Brickerei GLANZ



Steel roof covering, type:  
Greencoat Pural BT Grey



Facing made of wood,  
planken

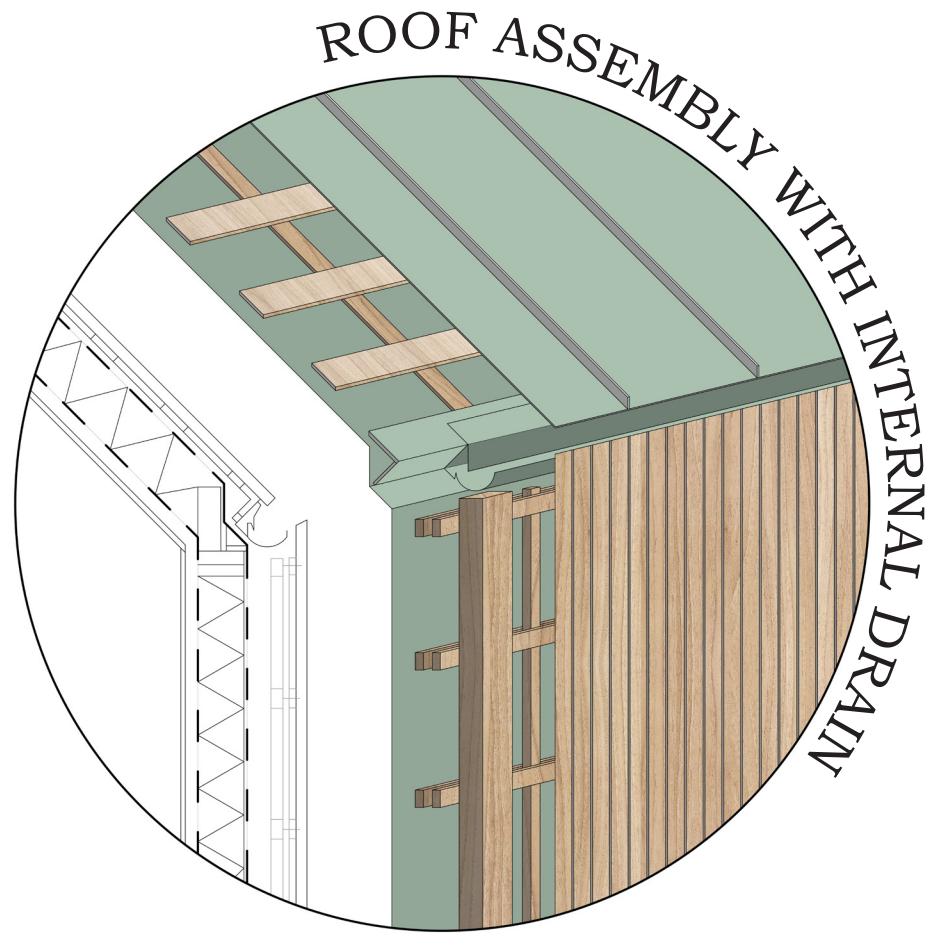


43100

A

Ж

- Folding panels
- Crate
- Counter-lattice
- Waterproofing
- Rafters
- Insulation
- Vapor barrier
- Inner crate



ROOF ASSEMBLY WITH INTERNAL DRAIN

- Exterior plaster
- The outer layer of brickwork
- Air gap
- Insulation
- Load-bearing layer of brickwork
- Internal lining

