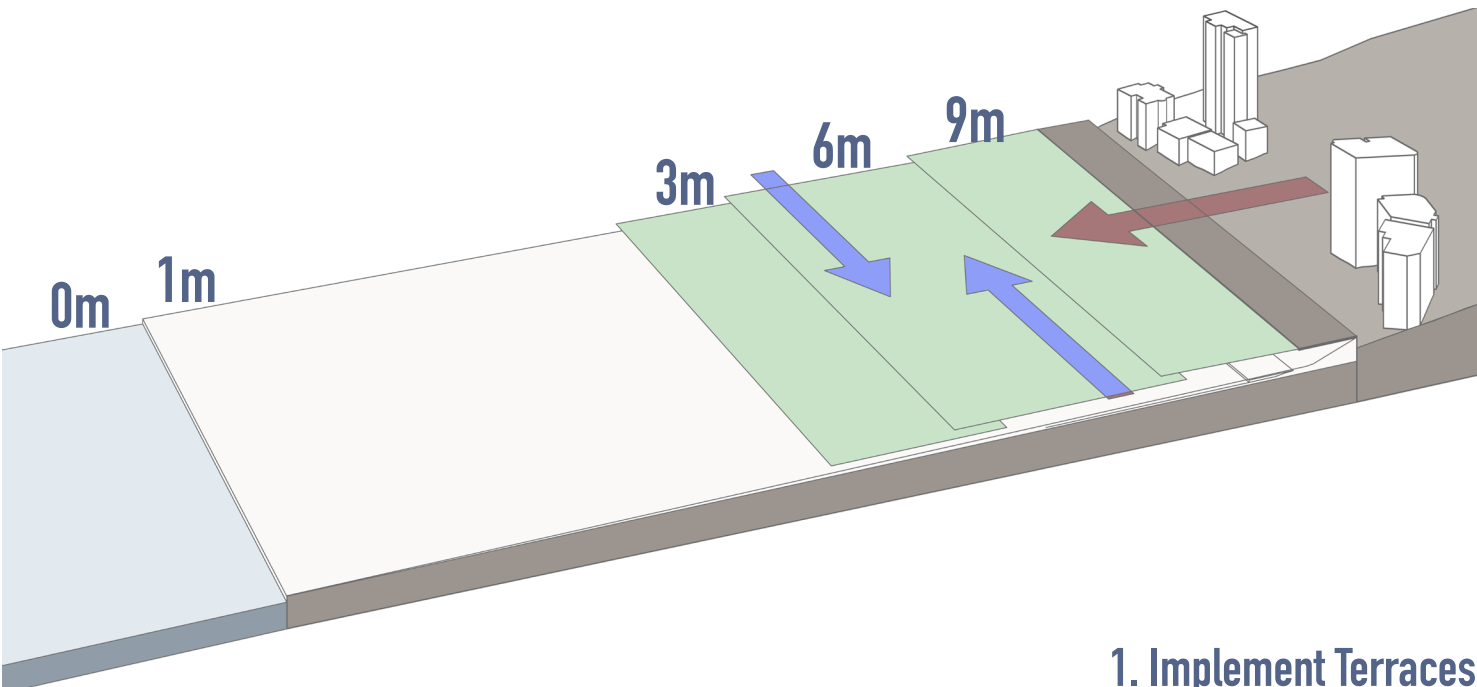
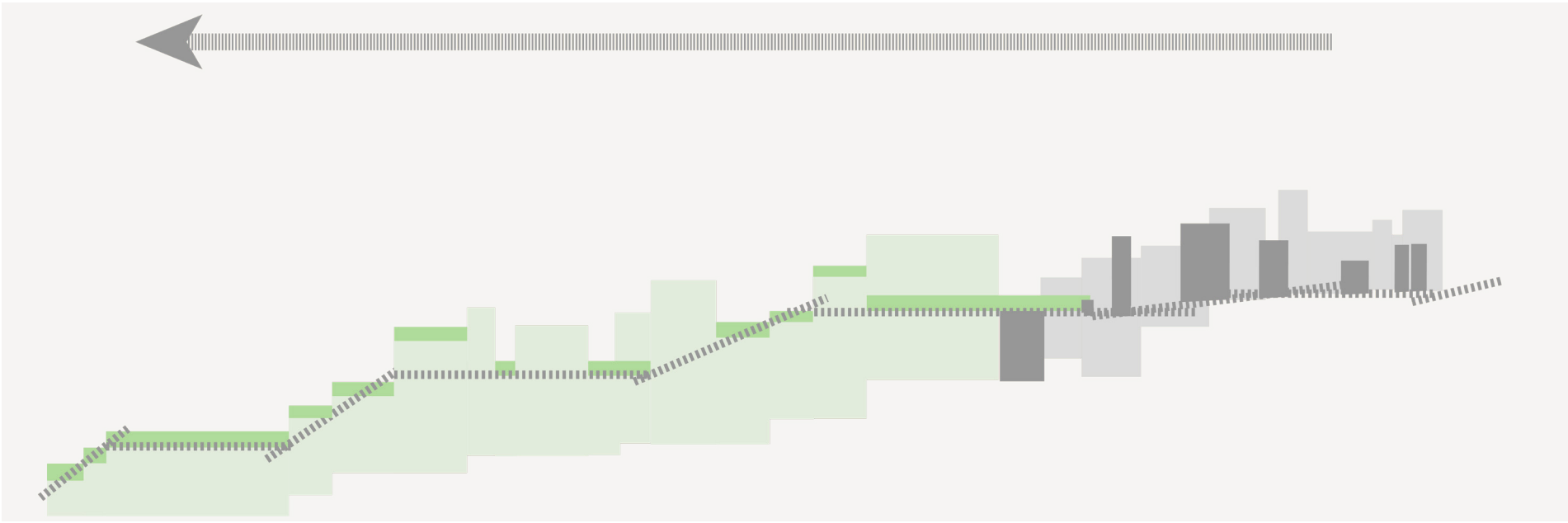


TERRACED WATERFRONT



EXTENDING THE BEIRUT CITY

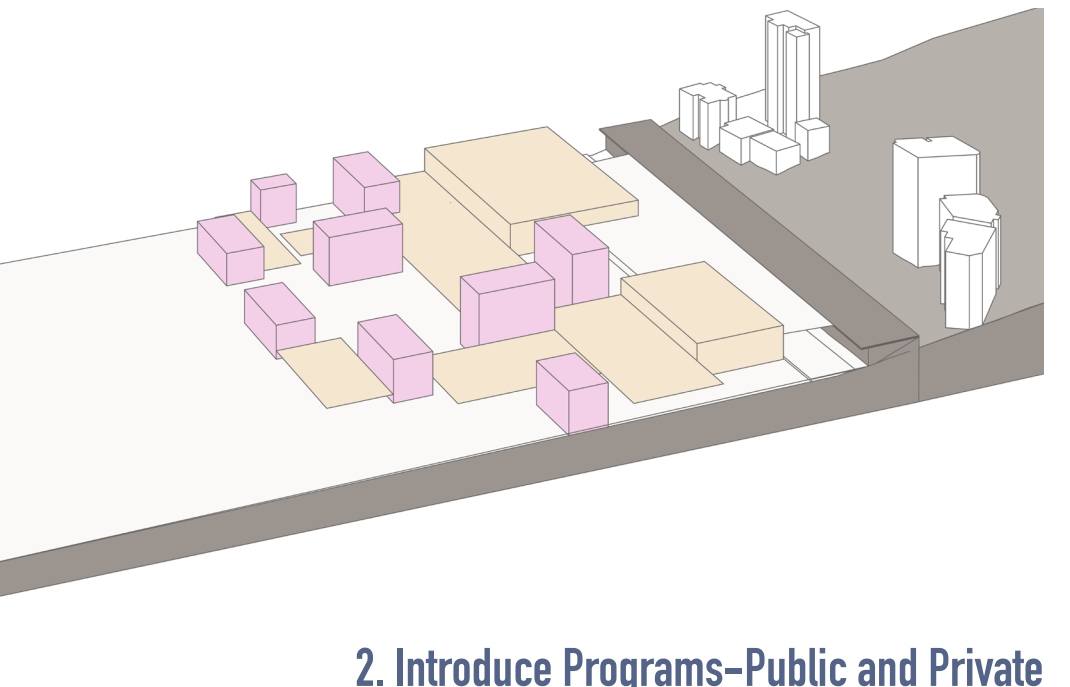
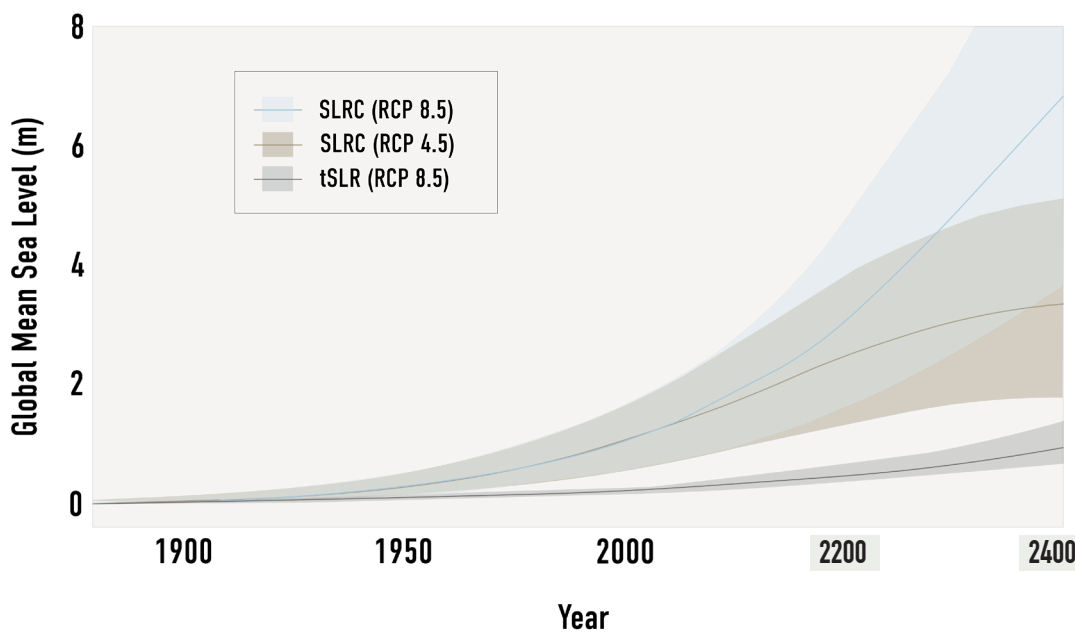
Terraced Waterfront following the city's language, using the idea of "terraces" implemented as greeneries and walkways, this could efficiently increase the accessibility from the inner city to the Waterfront.



1. Implement Terraces

1. DANGER OF SEA LEVEL RISE IN COASTAL CITY

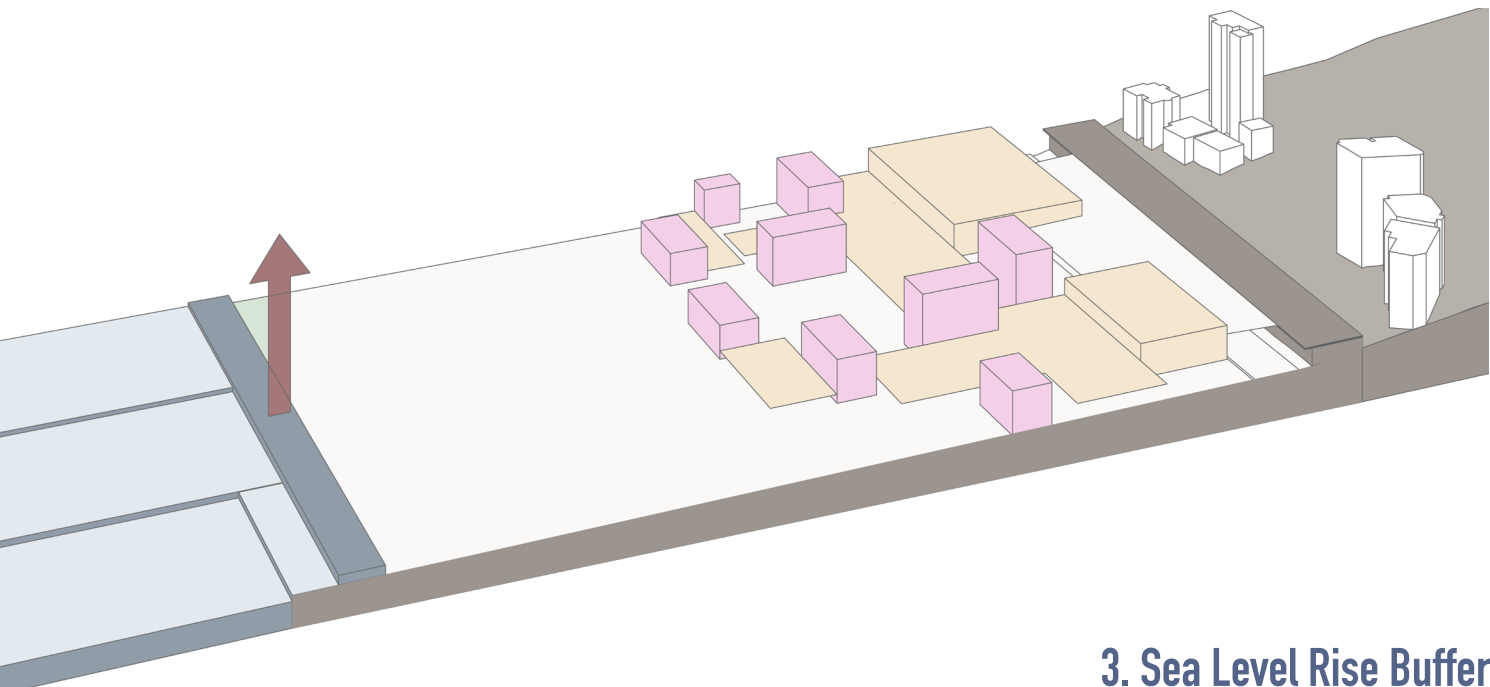
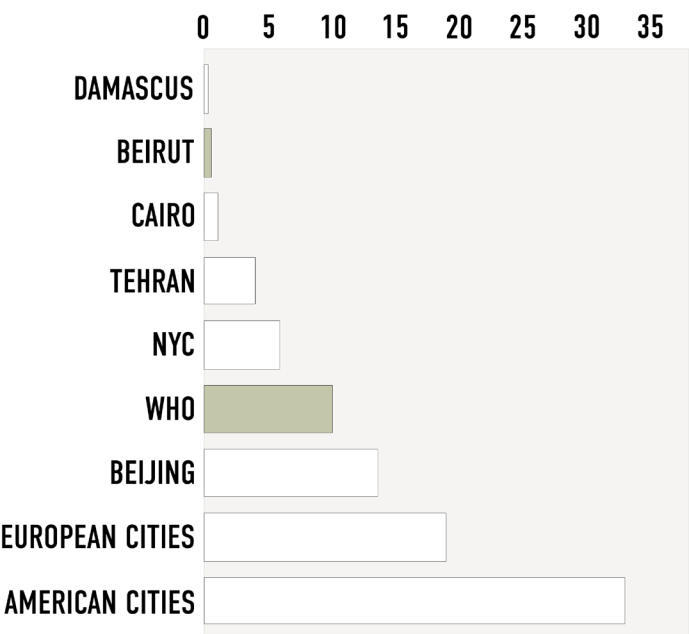
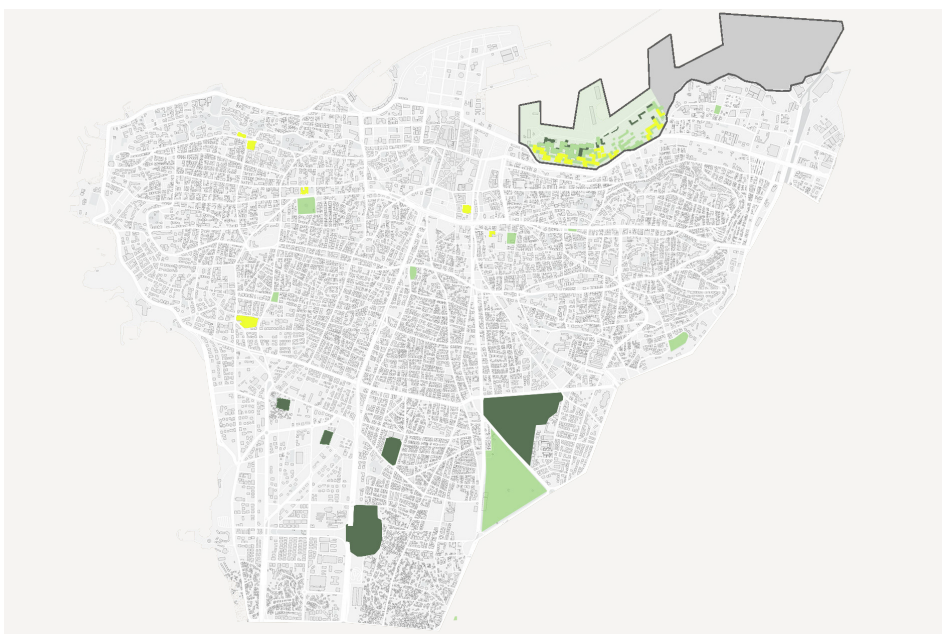
Due to global warming, sea-level rise is a crucial challenge in the coastal area. With the current rate, the port will vanish in 200years.



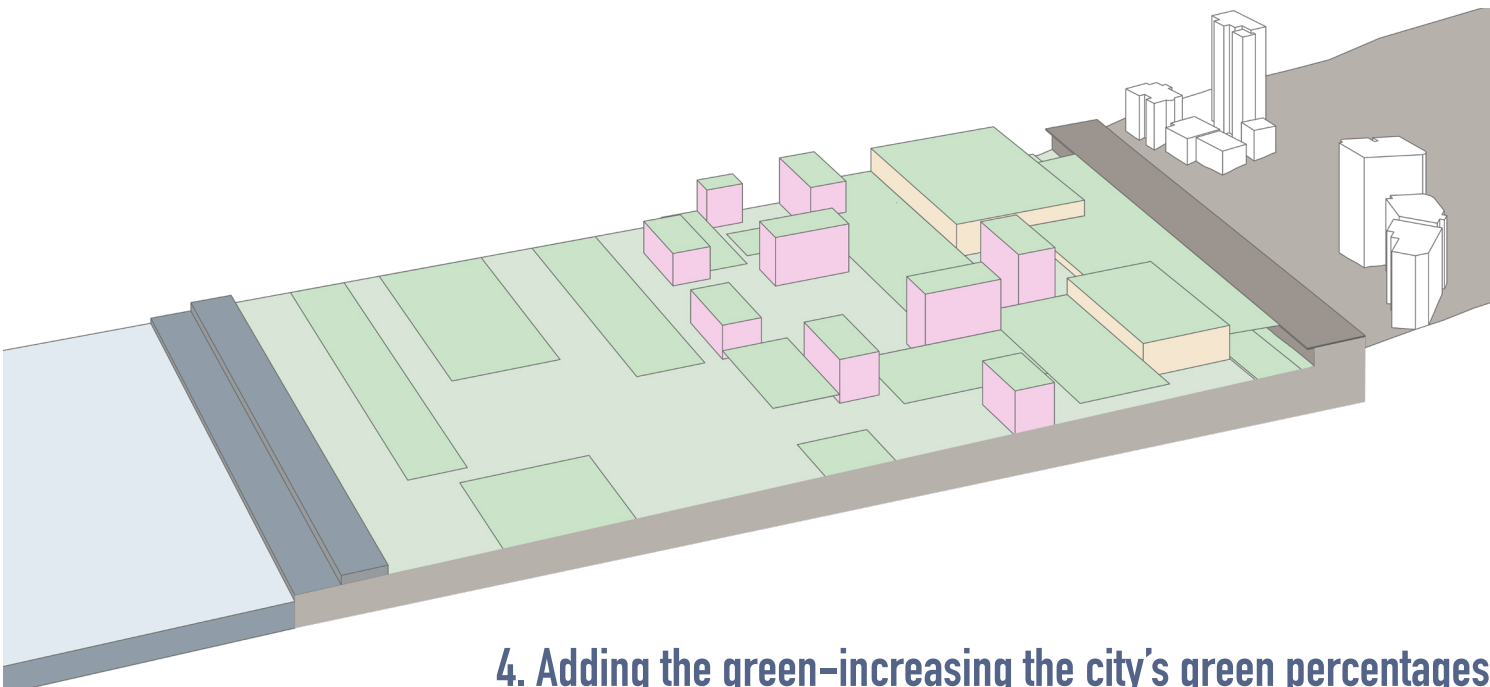
2. Introduce Programs—Public and Private

2. INSUFFICIENT PUBLIC GREENS

Not enough public programs, facilities, and parks for the locals, and the percentage of greens Beirut has is below WHO's requirements.



3. Sea Level Rise Buffer



4. Adding the green—increasing the city's green percentages