

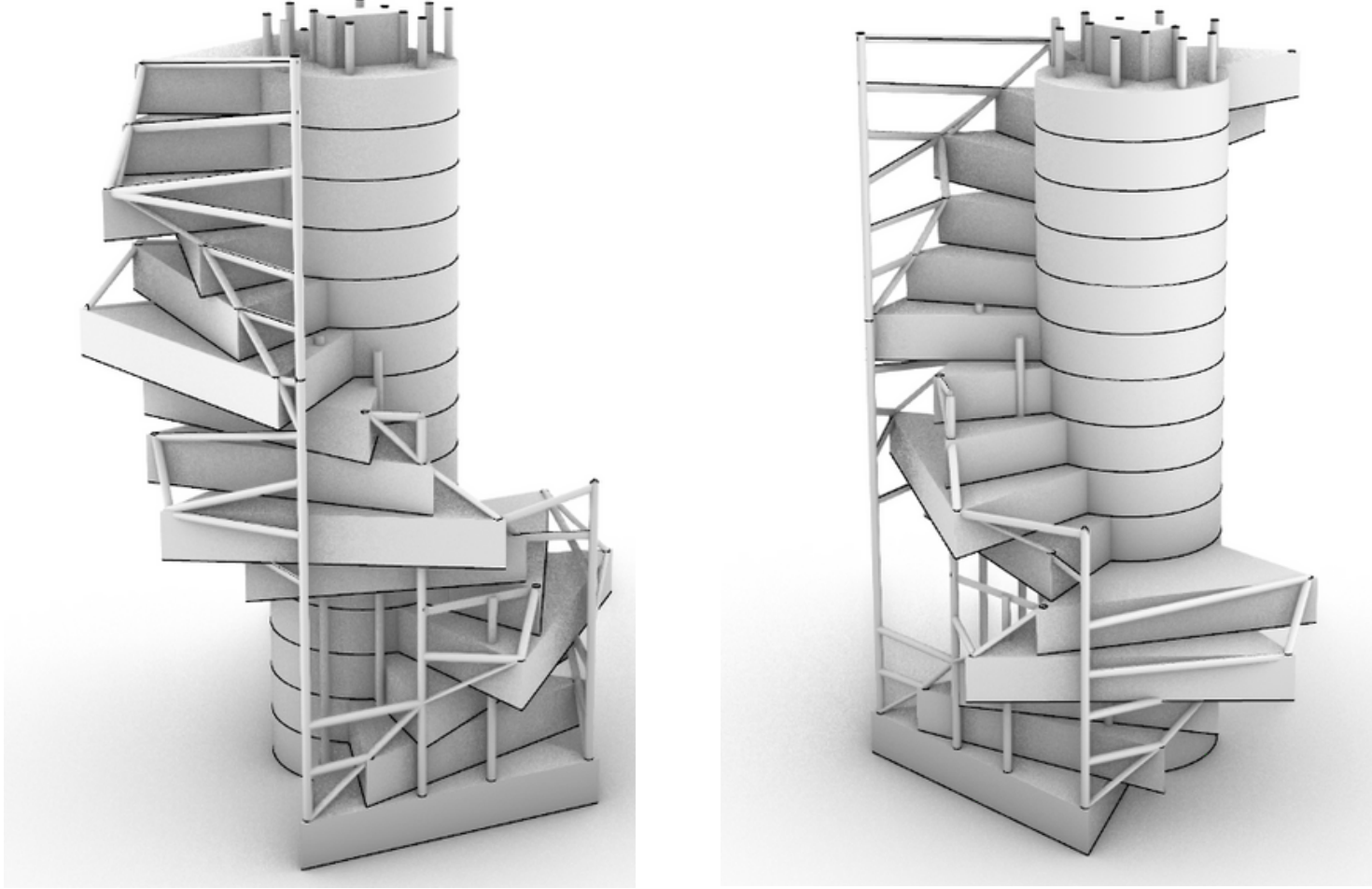


TOWER COL

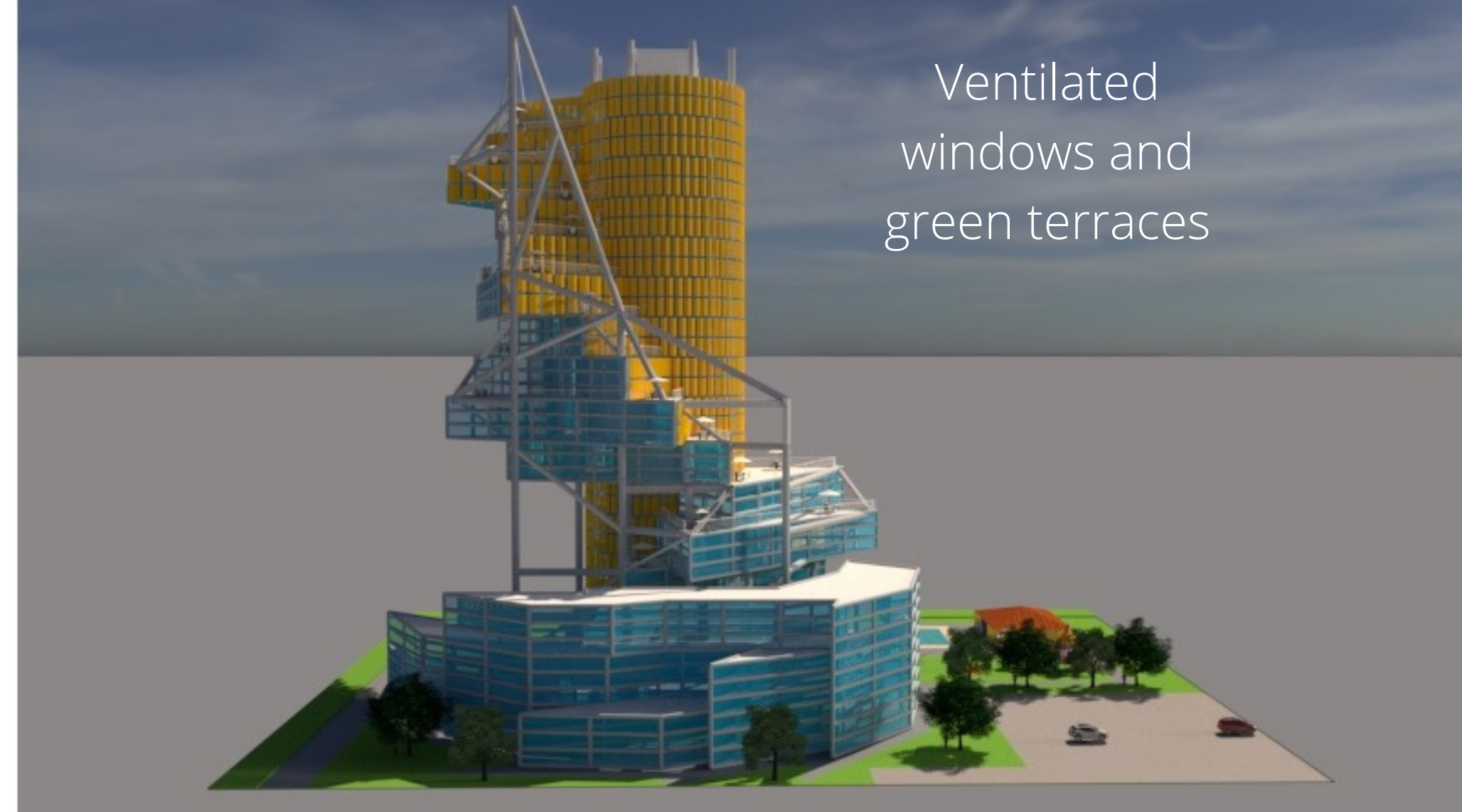


THE OBJECTIVE IS THAT PEOPLE CAN GROW, BECAUSE LIFE TEACHES YOU THAT IT TURNS BACK AND IS NOT A STRAIGHT ROAD, BUT THAT IS WHY YOU ARE LIVING THEIR EXPERIENCES AND WE WANT YOU TO LIVE THEM IN THE TOWER WITH YOUR HOME.

Structure

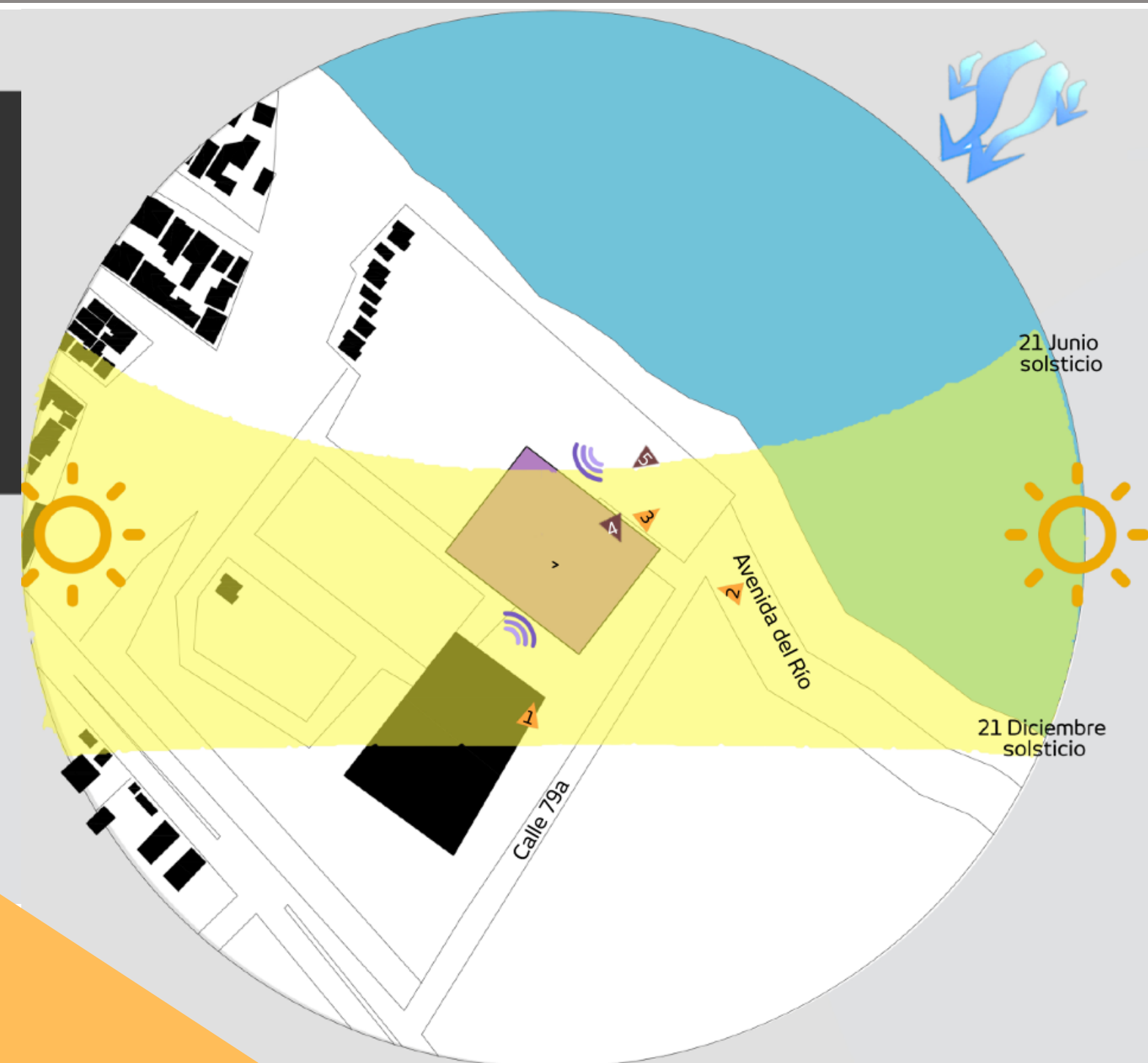


Environment



Design Process

Site analysis



Option 1

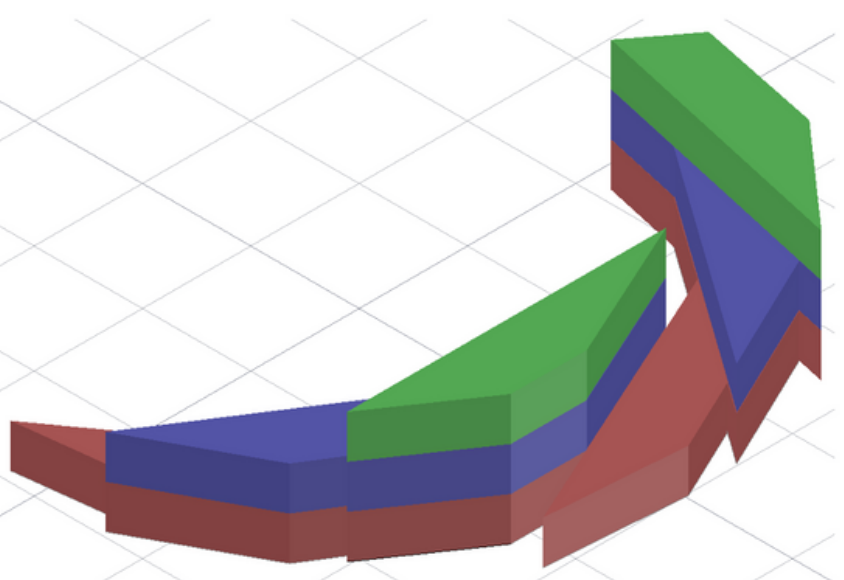


Option 2

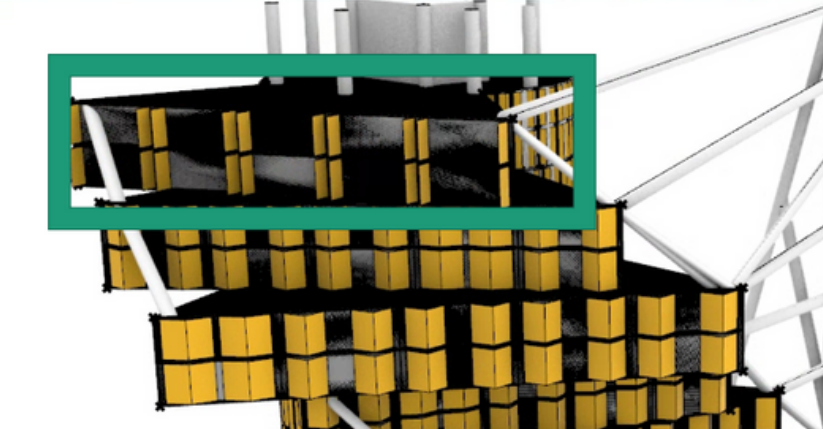
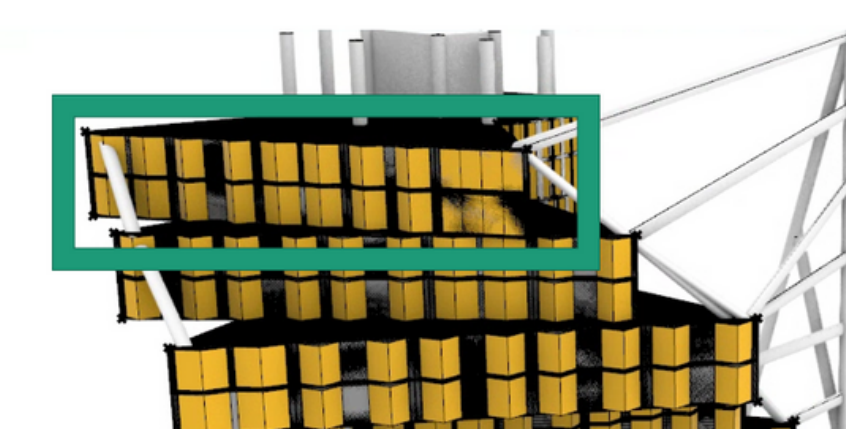
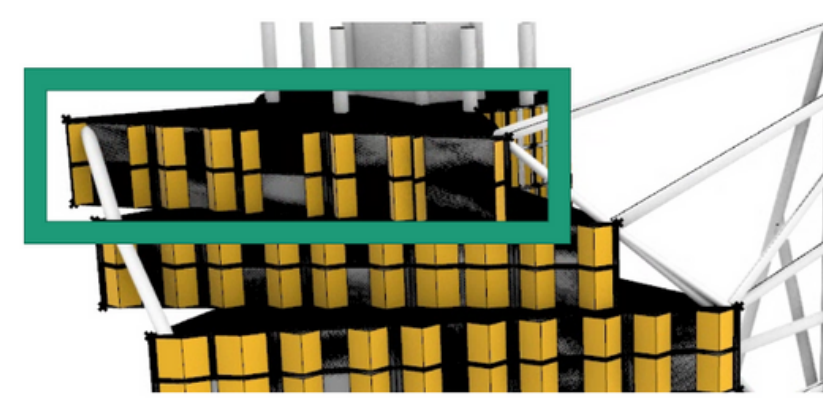
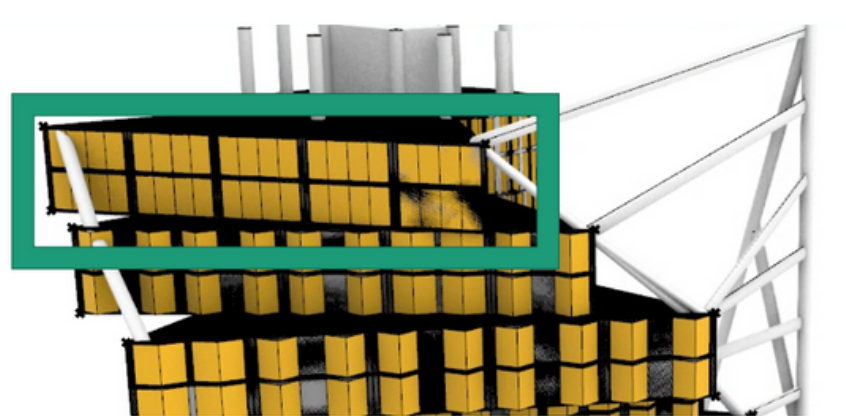
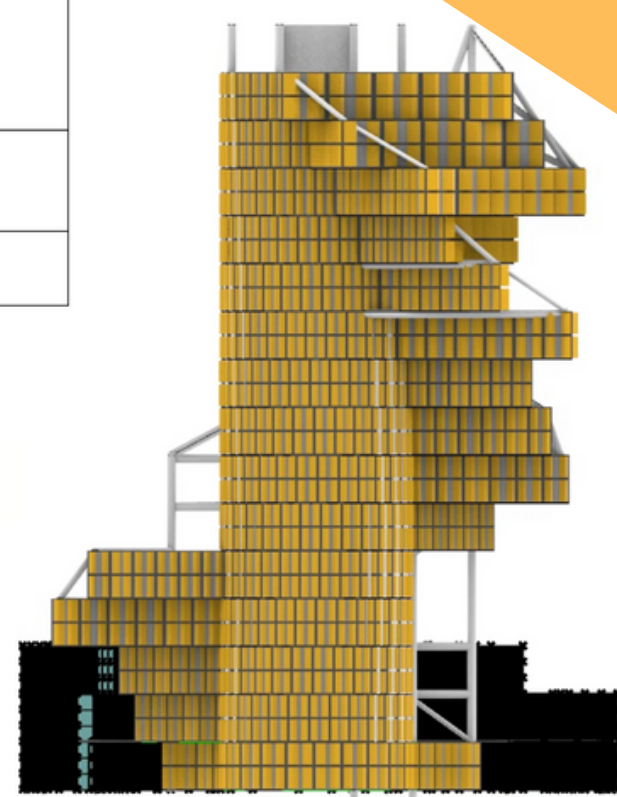


Option 3

Layout



NIVELES	SECTOR
1	COMERCIAL
2	COMERCIAL
3	OFICINAS



DEPARTAMENTOS LOFT

DEPARTAMENTOS TÍPICO # 3

DEPARTAMENTOS TÍPICO # 2

DEPARTAMENTOS TÍPICO # 1

HOTEL

AMENIDADES

Estudiantes: Roberta Reyes Ramírez

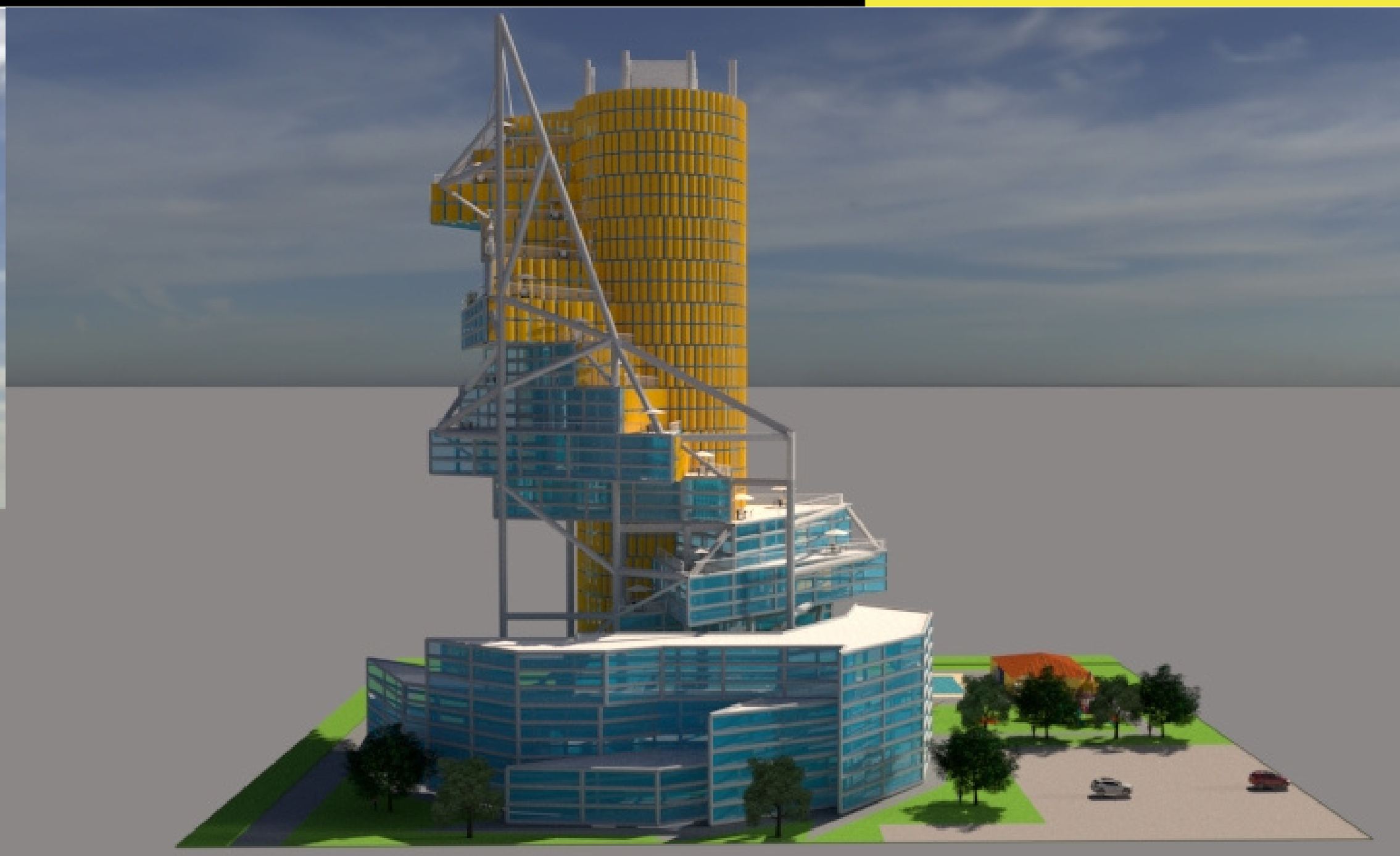
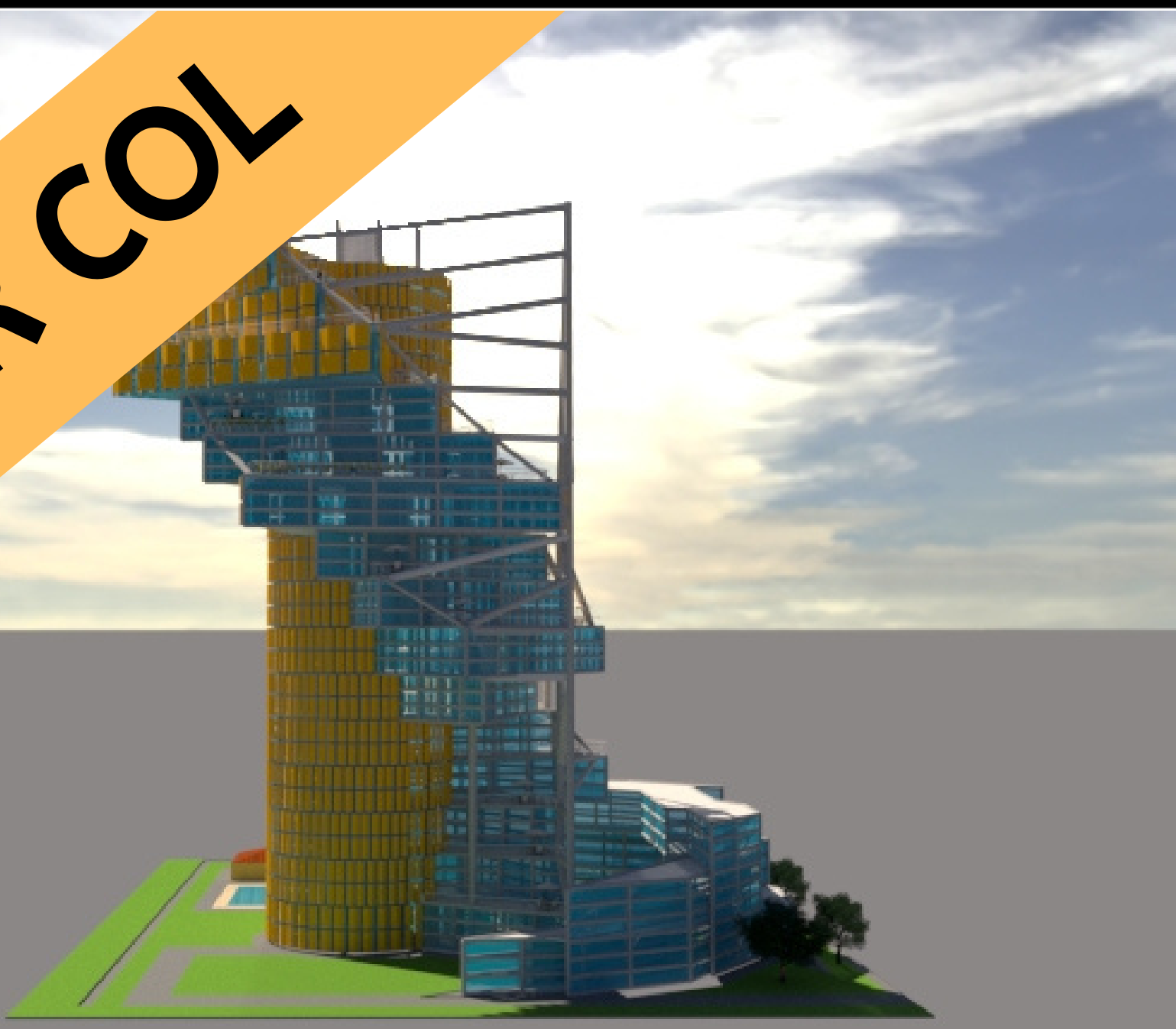
NOMBRE DE PROYECTO

TOWER COL
(Curves of Life)

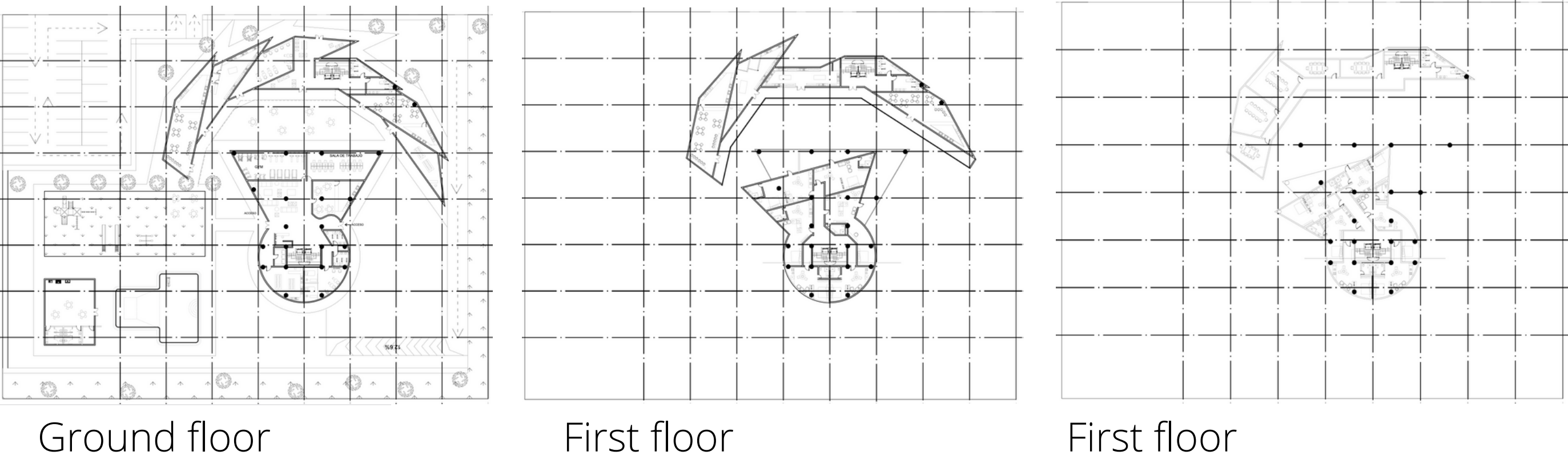
3er Parcial

Profesor: Arq. Melissa Godinez

TOWER COL



Plans

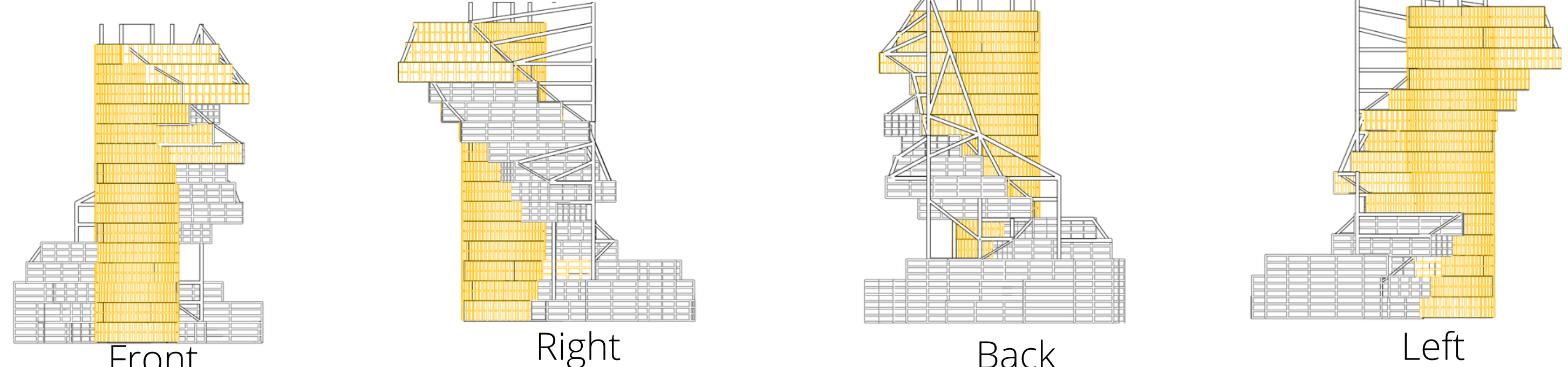


Ground floor

First floor

First floor

Elevatio



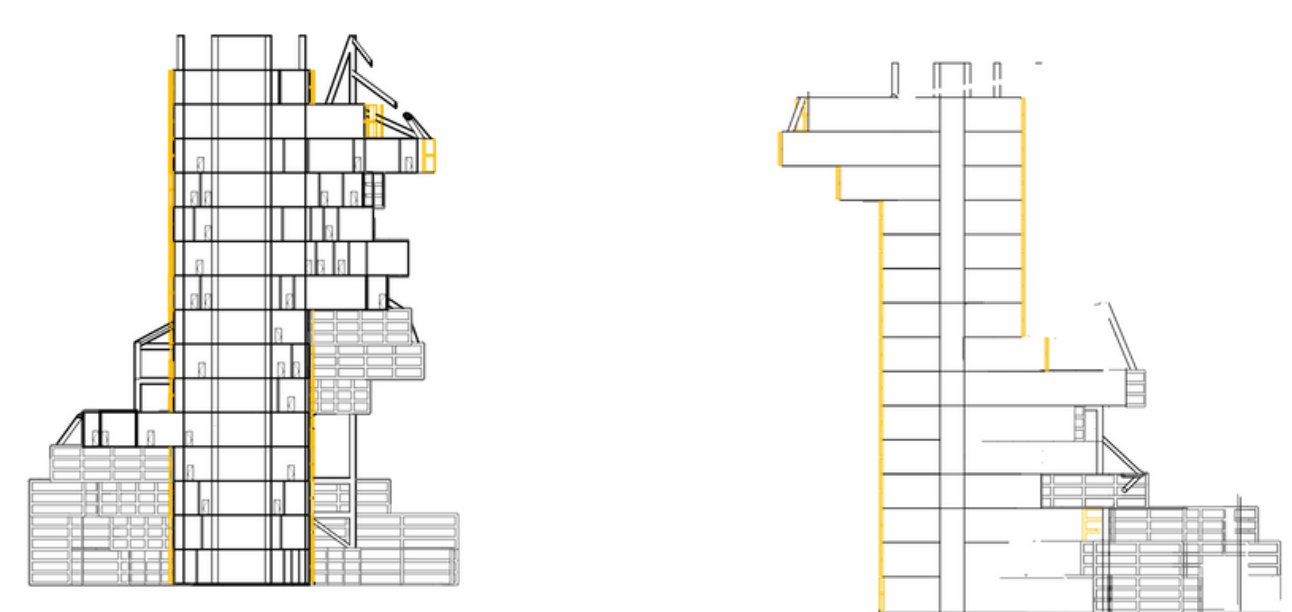
Front

Right

Back

Left

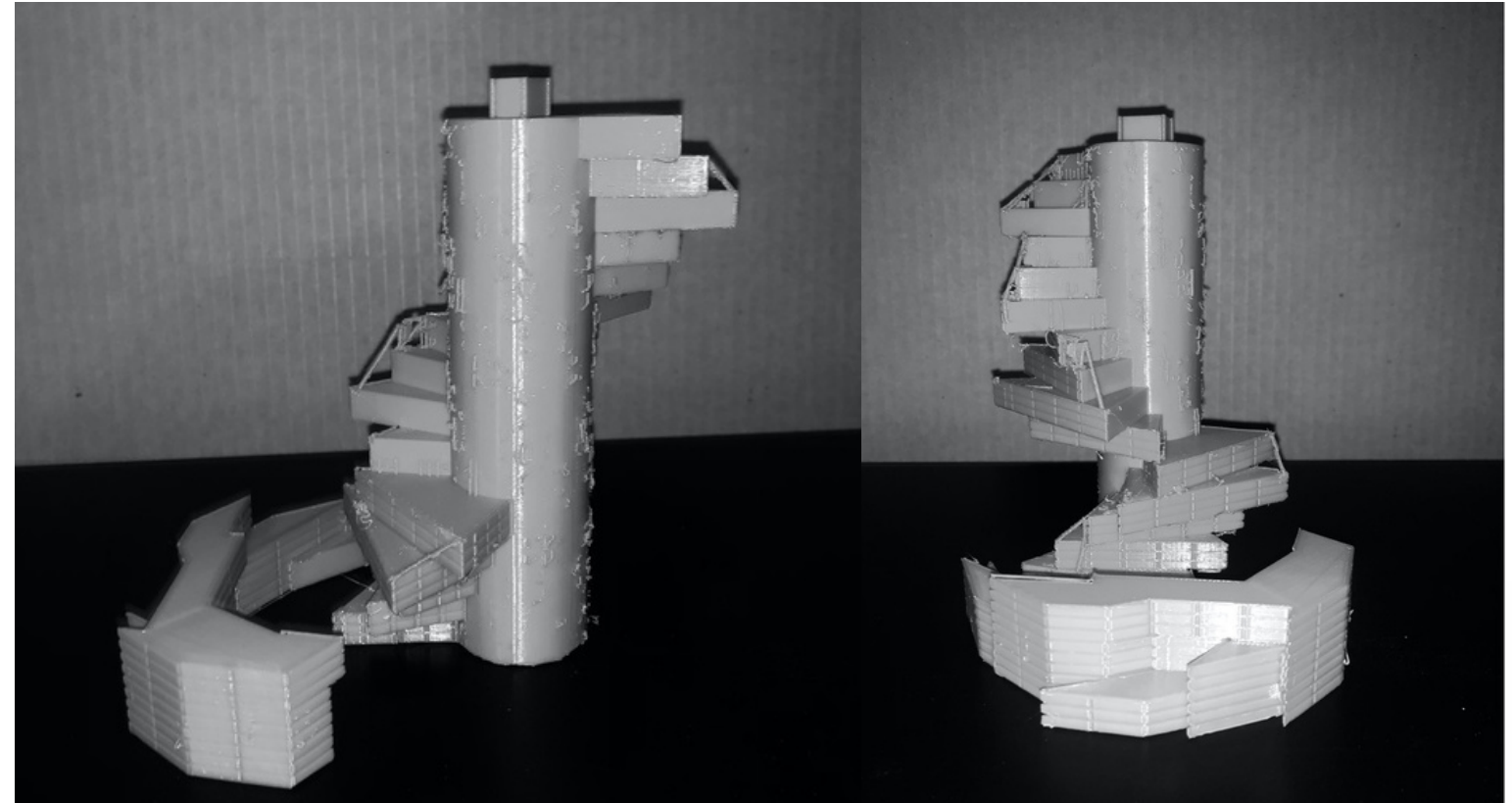
Elevations



View



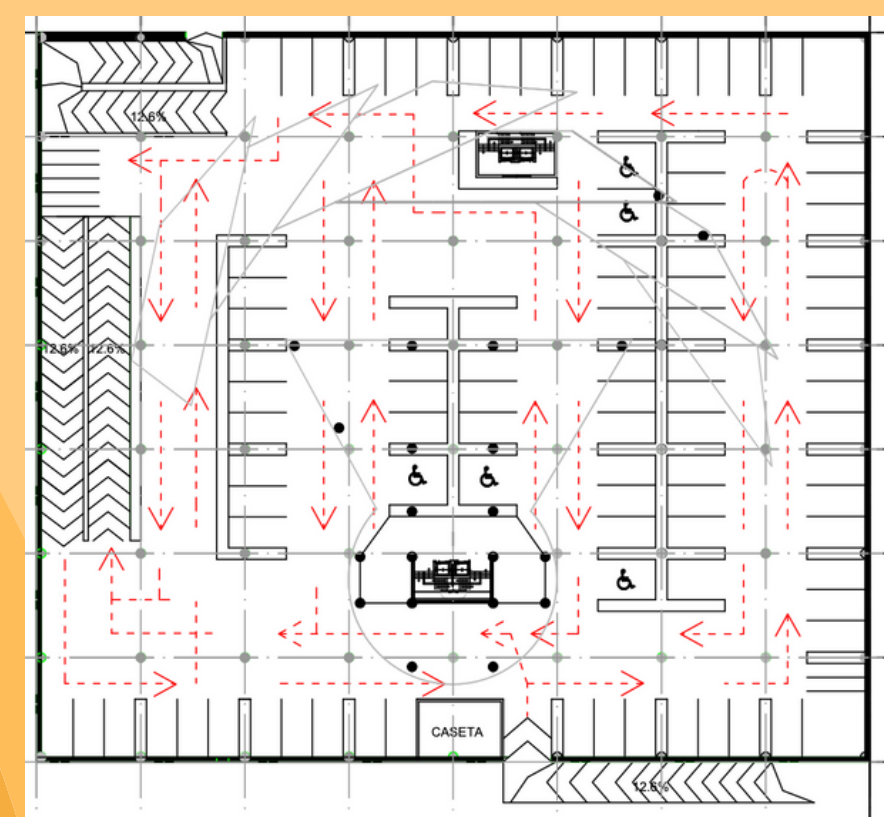
Physical Model



View



Parking lot



175 parking spaces

