

WHAT IF...?

CITY OF CHAOS

Territory in conflict, developing nation.
break from its differences, it needs a

NEUTRAL FRAGMENT

within the urban whole.

armistice zone,

city by a gap and breathes.

becomes the roots for NEW GENERATIONS. and ends in

the same vibration with the sea,

walk-through memory. A story built with pieces that shows

different perspectives

single answer but will always show the

tragic and

optimistic personality of an entire nation.

Beirut needs a

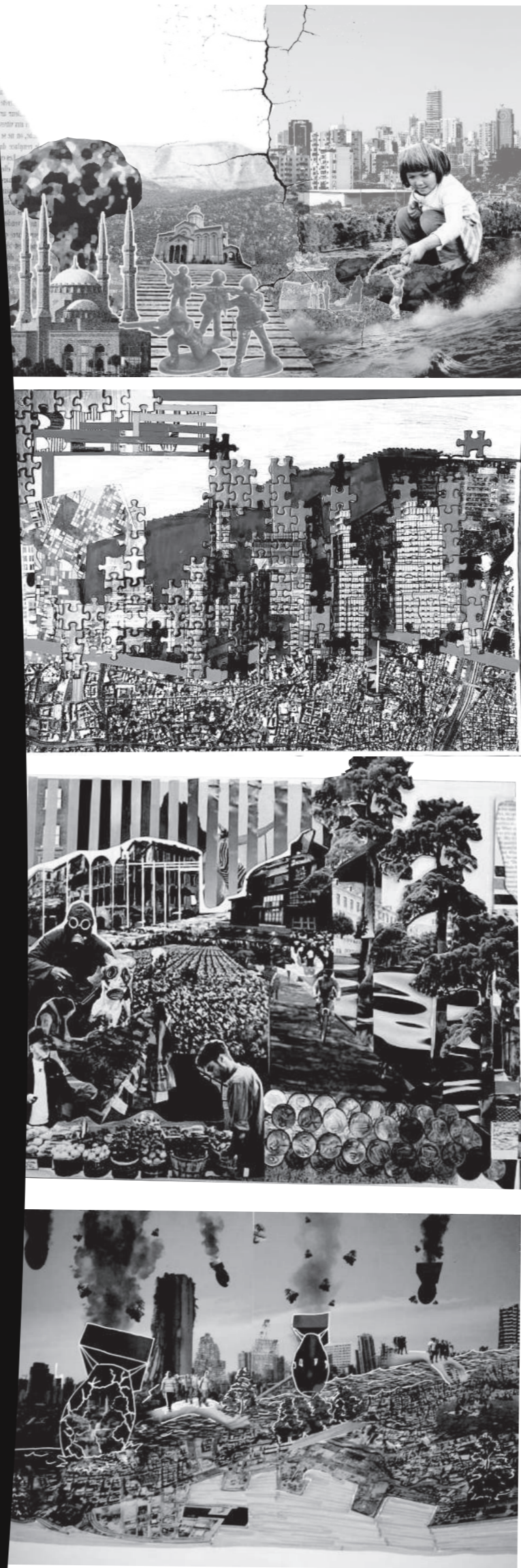
By making an

the port is separated from the

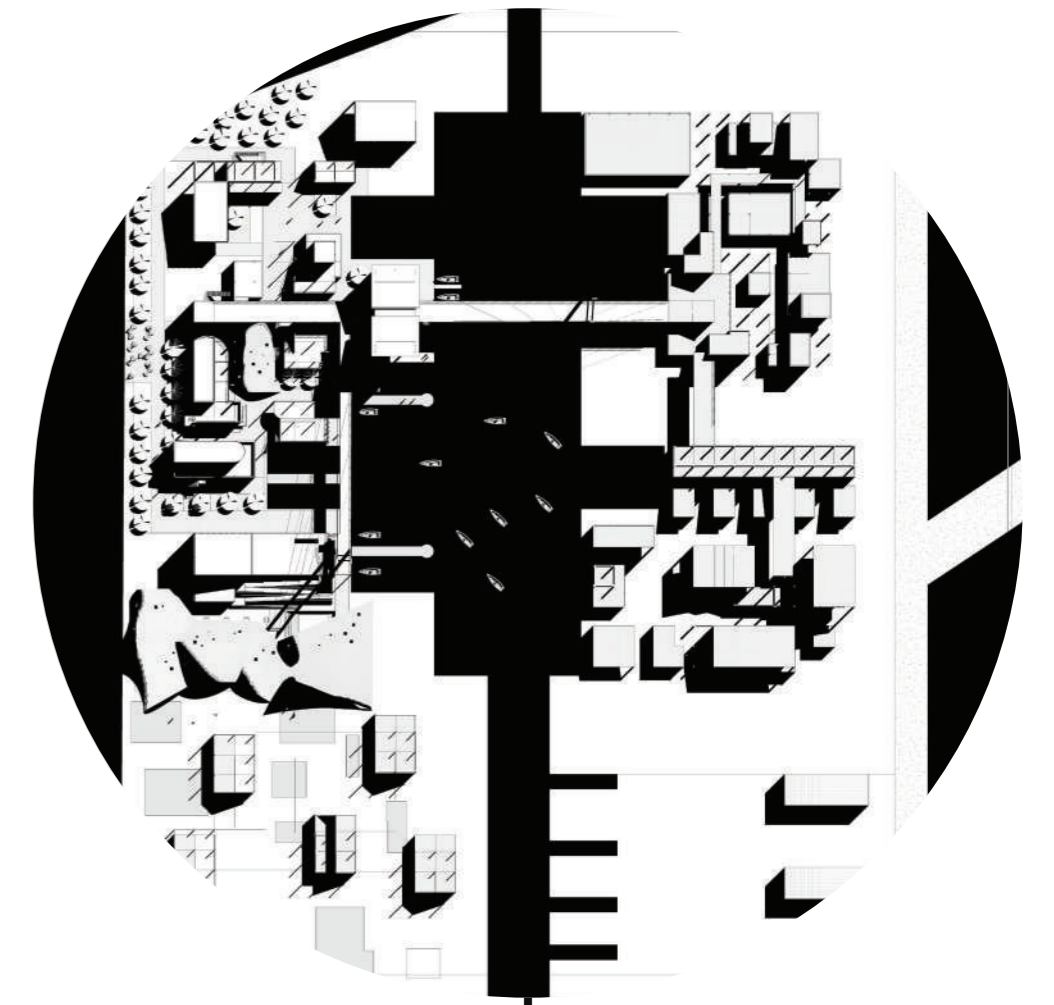
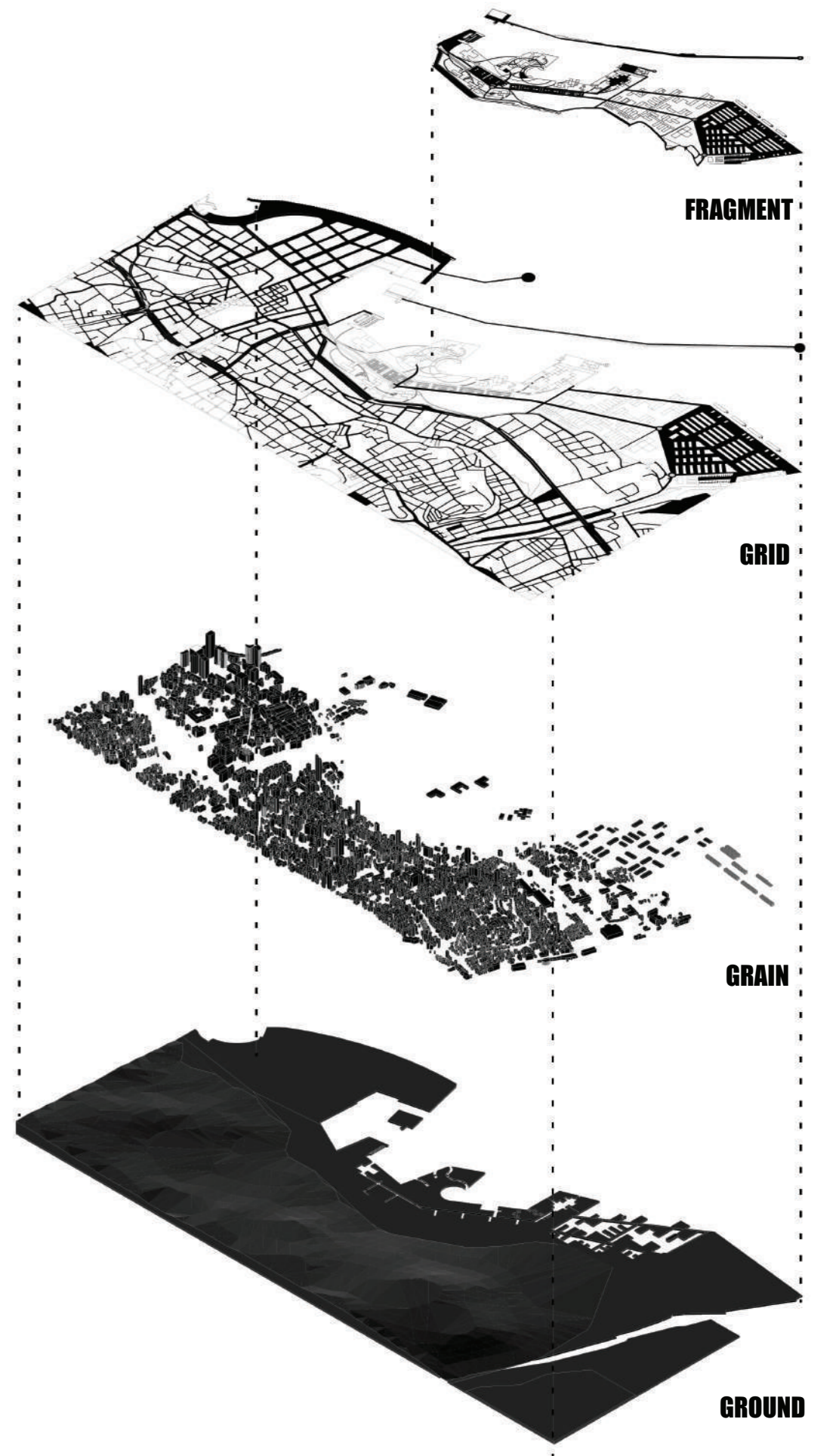
In a place, that

with a

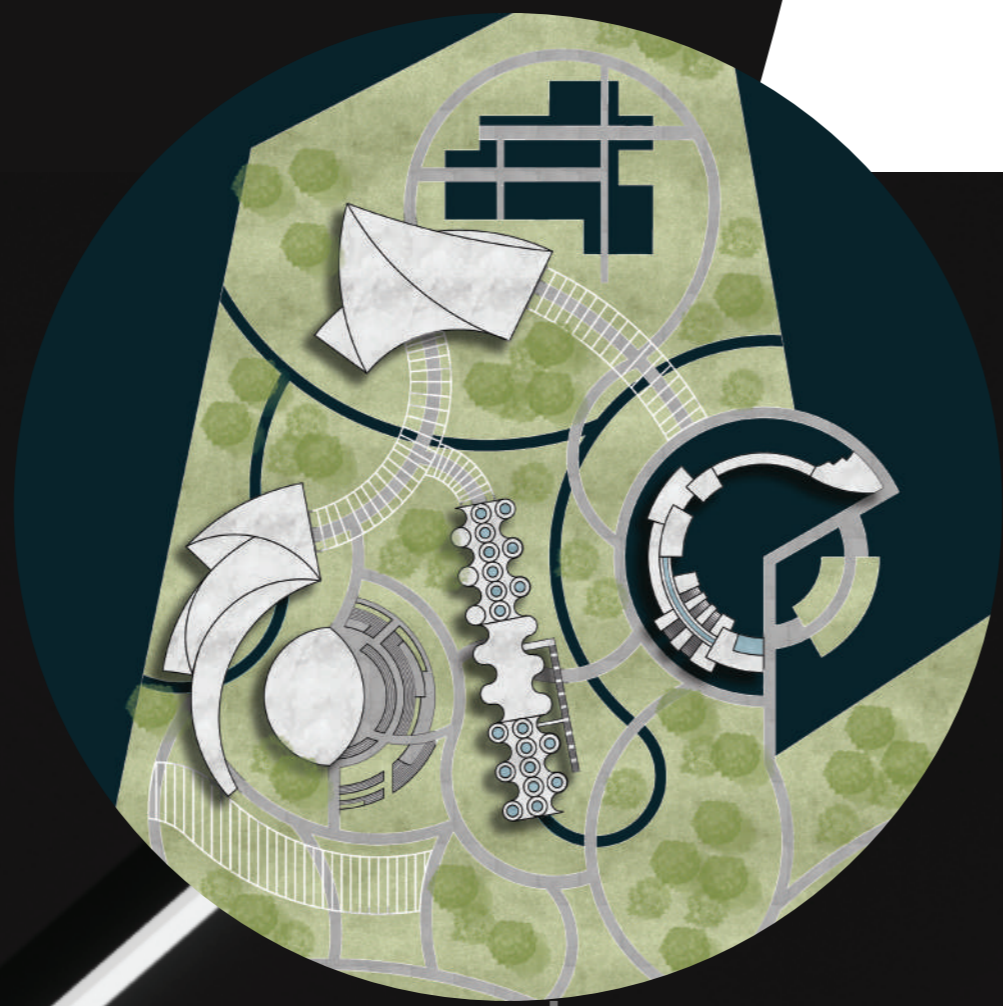
instead of one



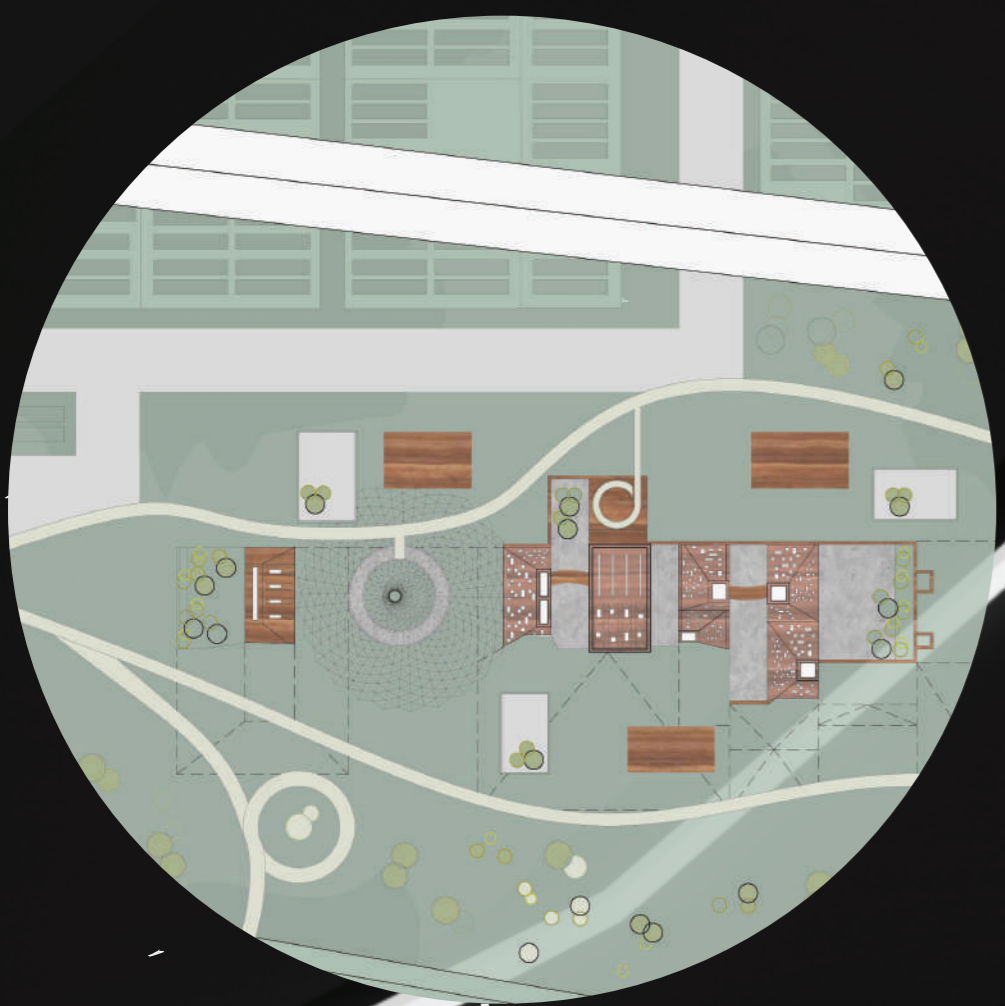
CONCEPT DEVELOPMENT



ARTISTIC ZONE

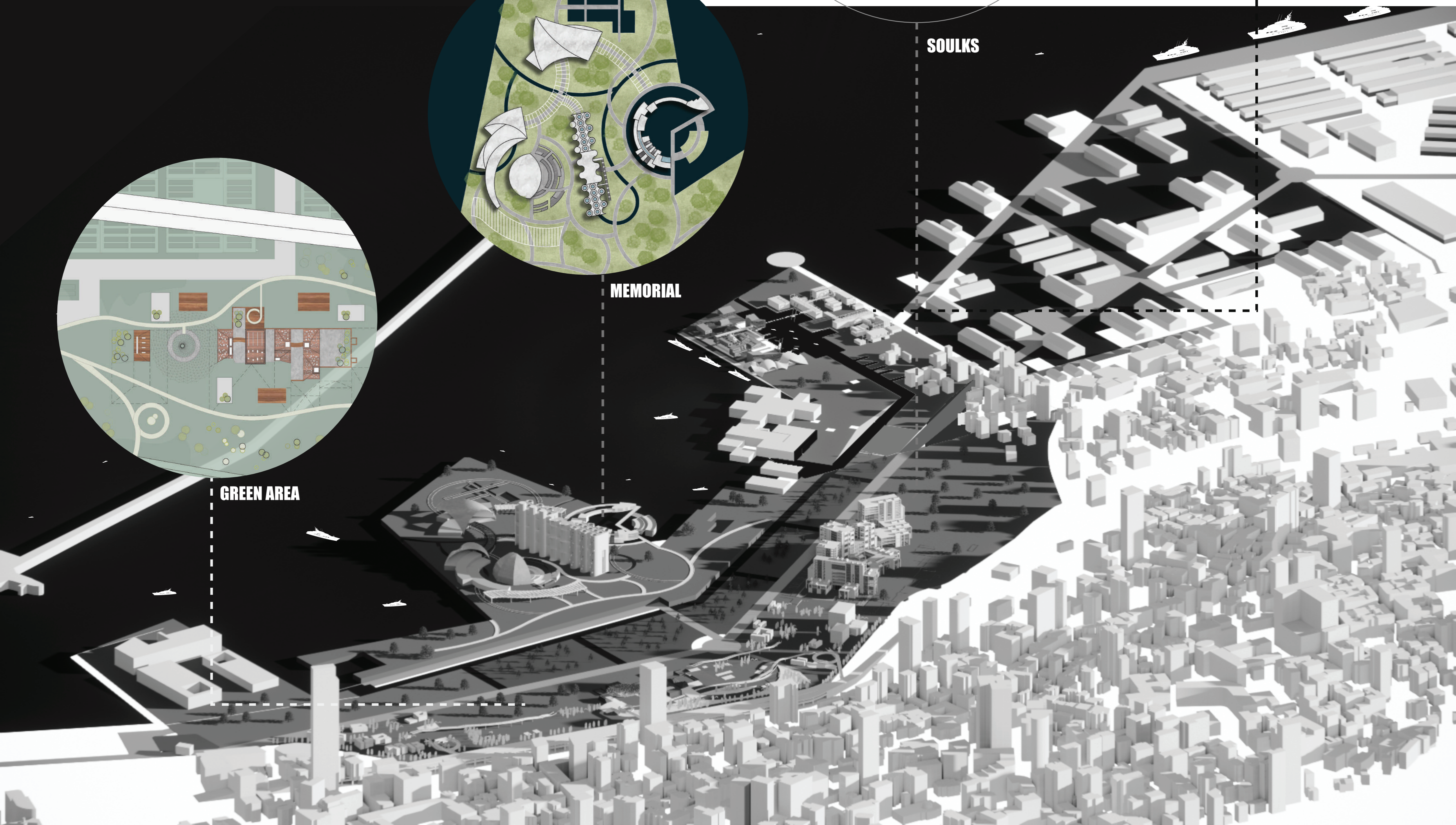


MEMORIAL



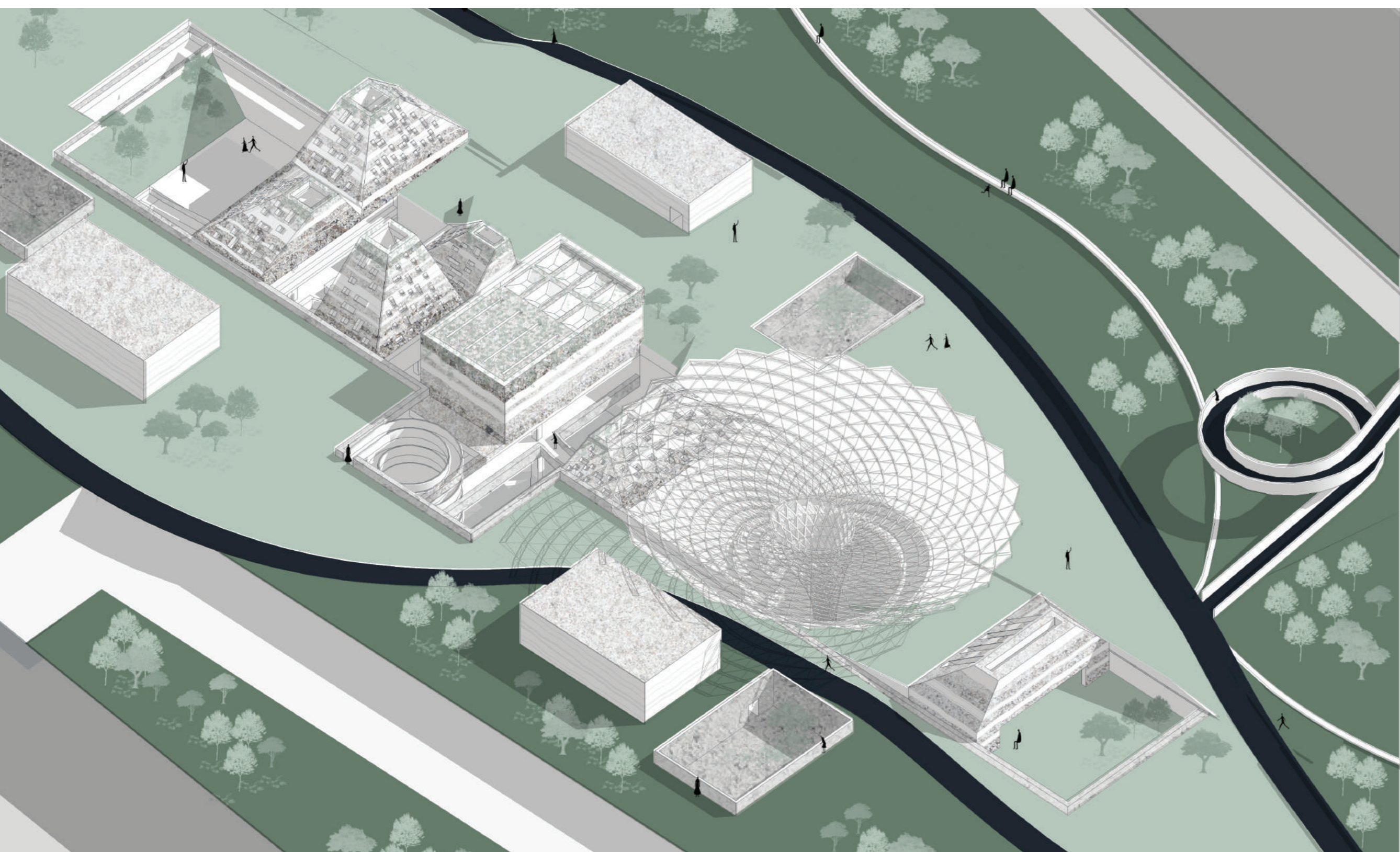
GREEN AREA

SOULKS



WHAT IF THE GREEN AREA IS....

a place where green conquers concrete and nature envelopes buildings?



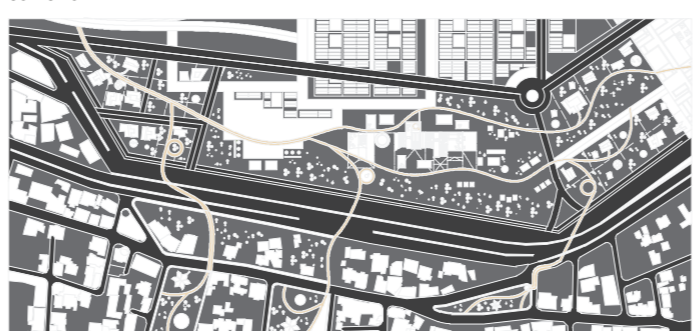
GREEN AREAS



ROADS AND FLOWS

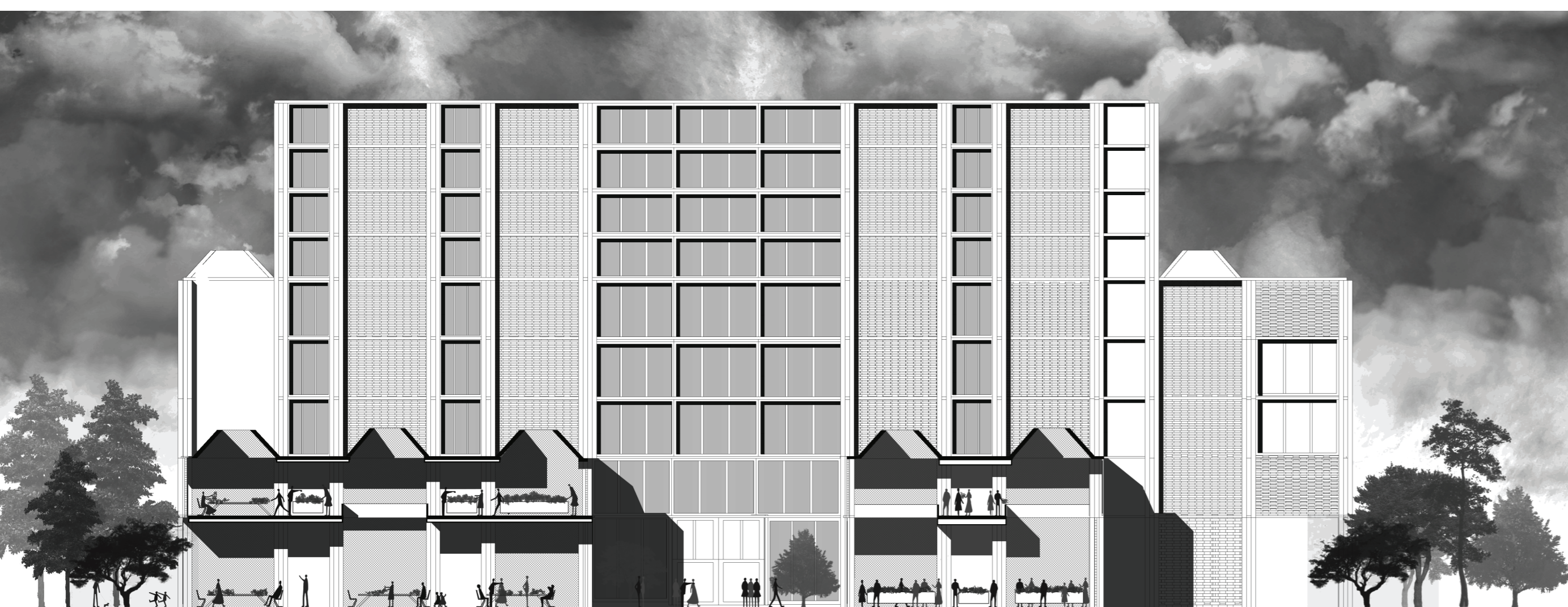


CONNECTION



WHAT IF THE SOULKS ARE....

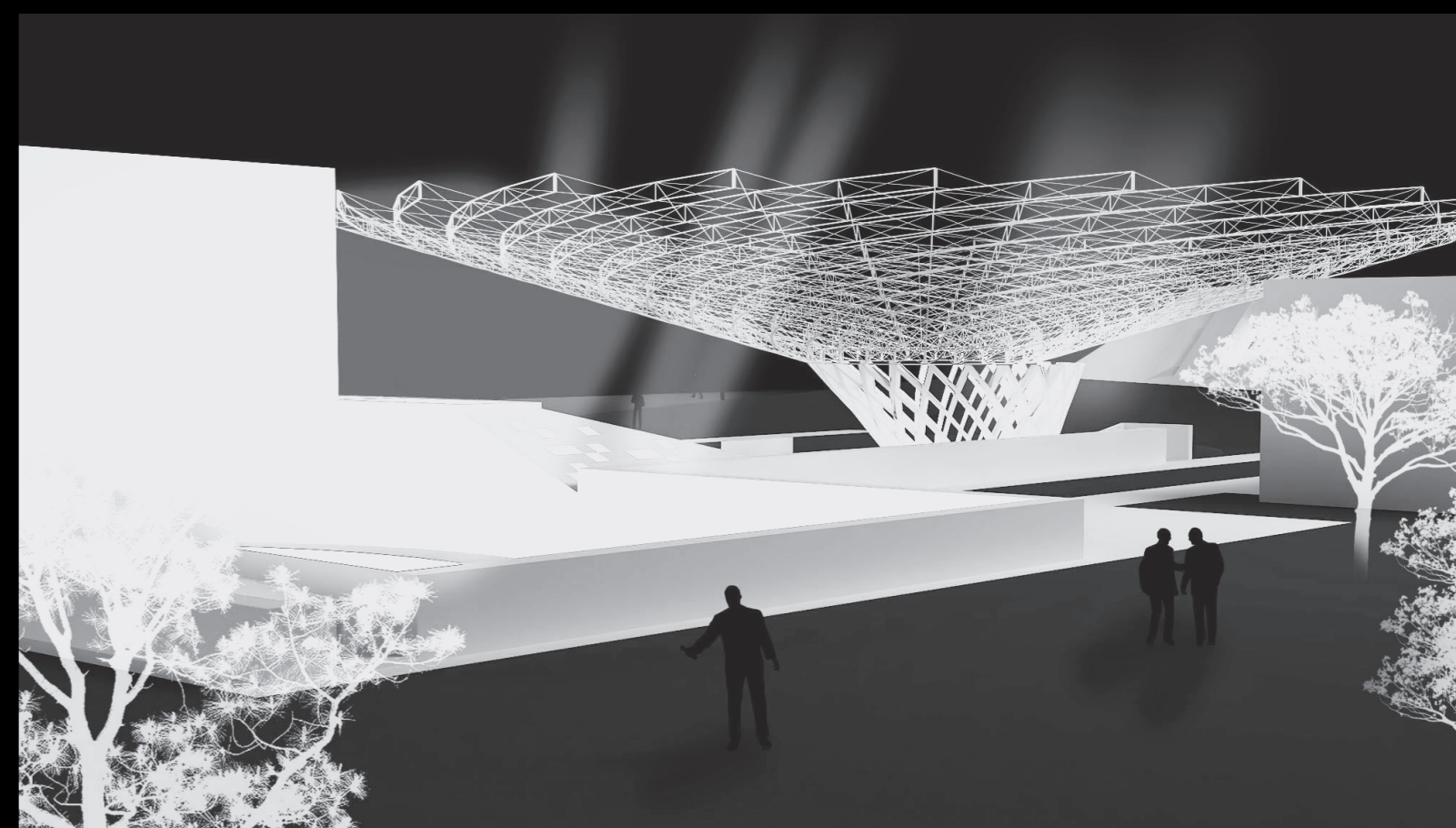
A PLACE OF UNITY AND PRODUCTIVITY



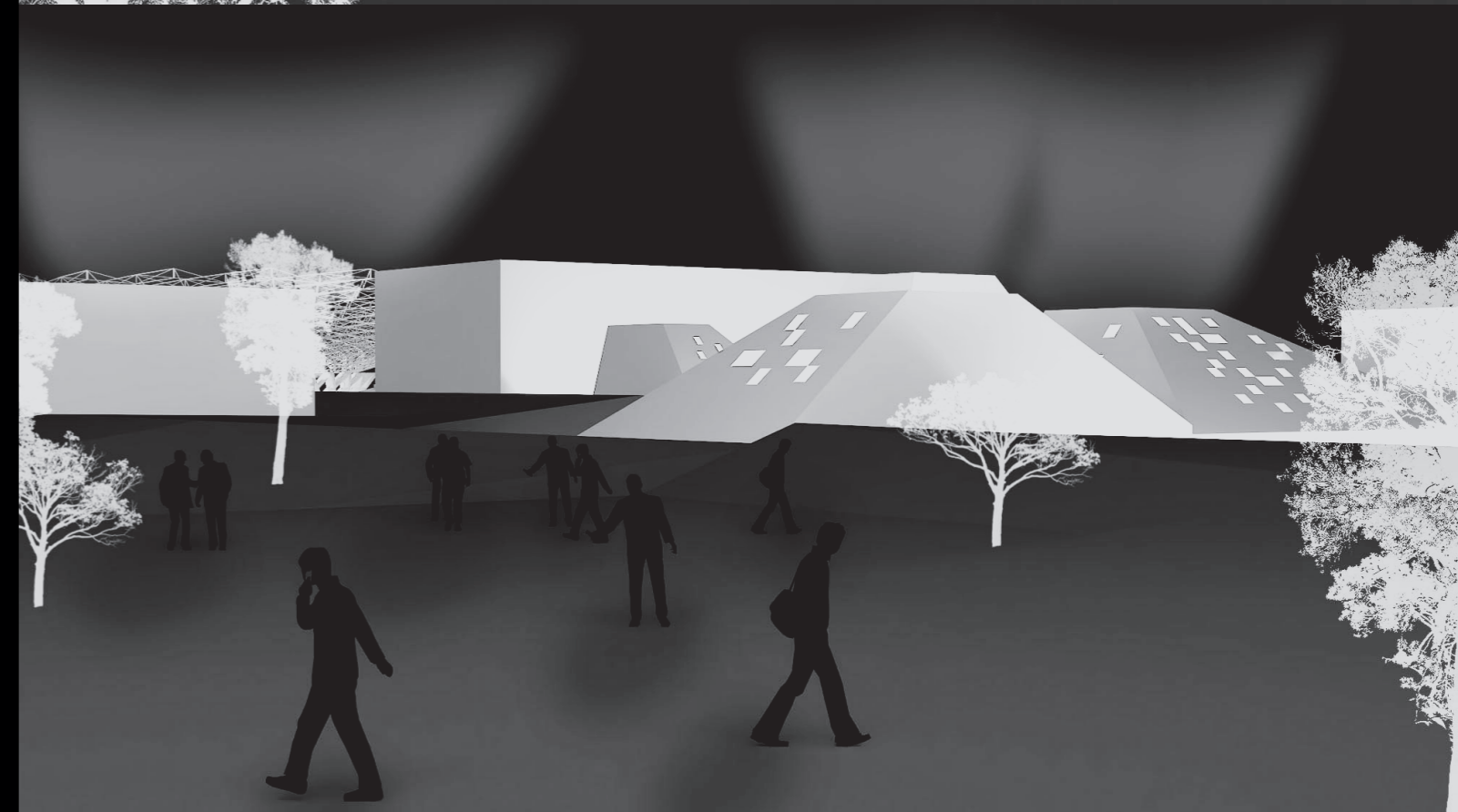
CONCEPT

Embracing all differences, the project proposes to redraw Beirut through new symbolic paths where all religions, cultures, and philosophies meet. In a return to earth fashion, the long-gone roots of Beirut are reclaimed.

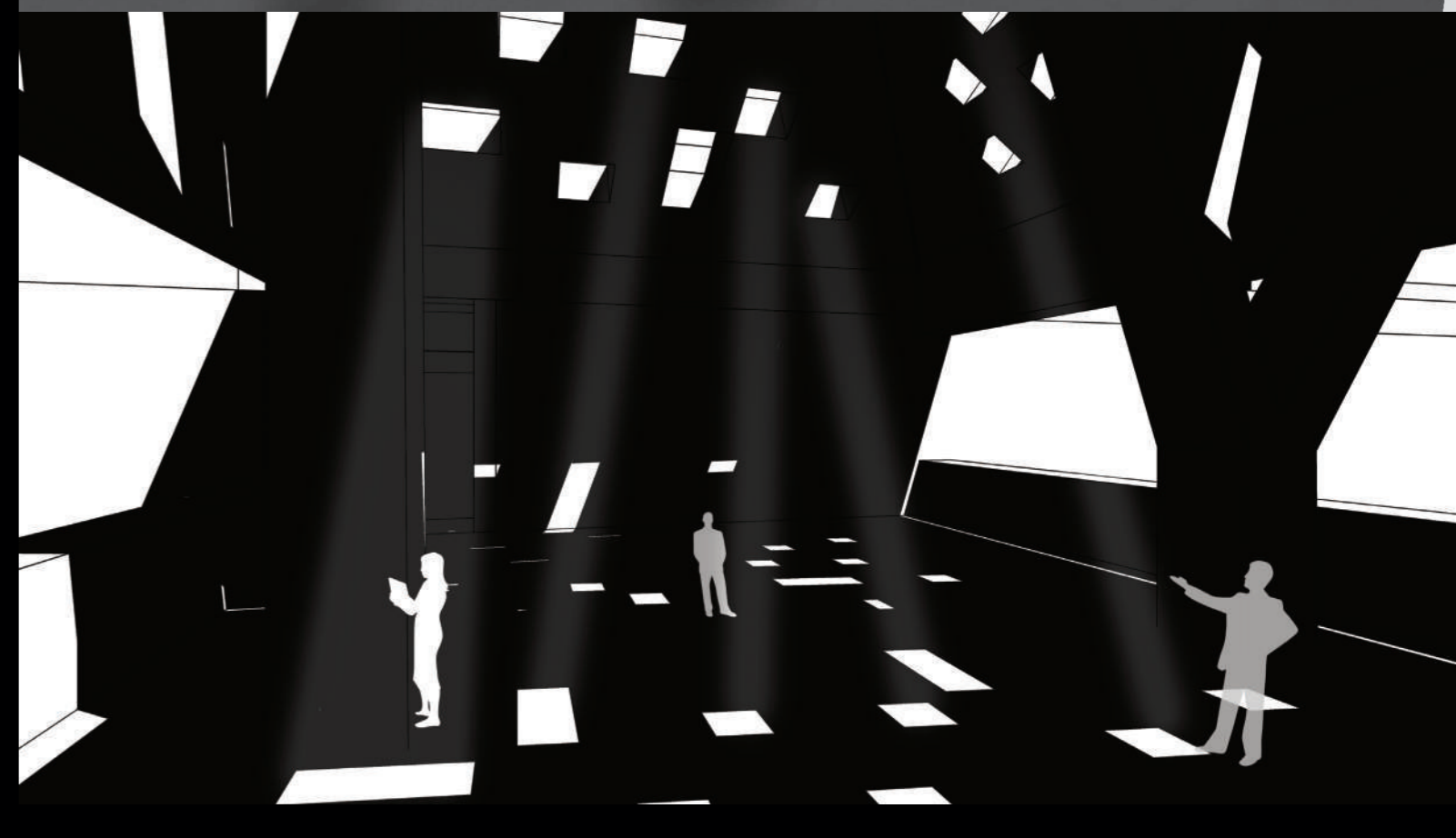
OUTDOOR SPACE AND PAVILION



VIEW OF THE BUILDING



WAYS OF INTRODUCING LIGHT



INDOOR PROMENADE



INDOOR-OUTDOOR HALL



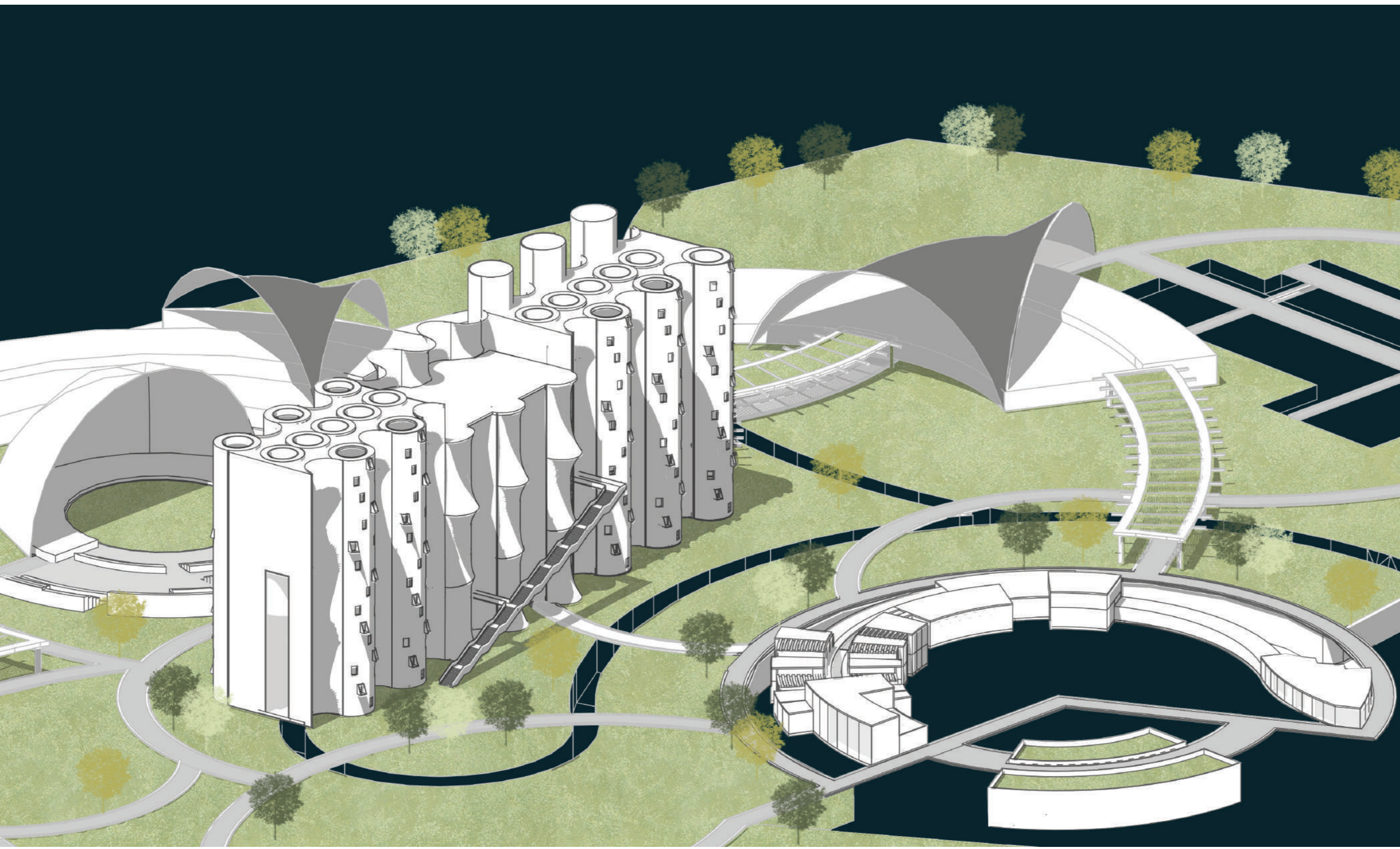
OUTDOOR SQUARE



A souk is a neutral space where a dynamic grid of plots is navigated through architectural circulation where phenomenal transparency occurs. Beyond practical purposes, a souk is a synthesis of the culture and history of the whole region.

WHAT IF THE MEMORIAL IS....

an enjoyable, lively place for the citizens of Beirut



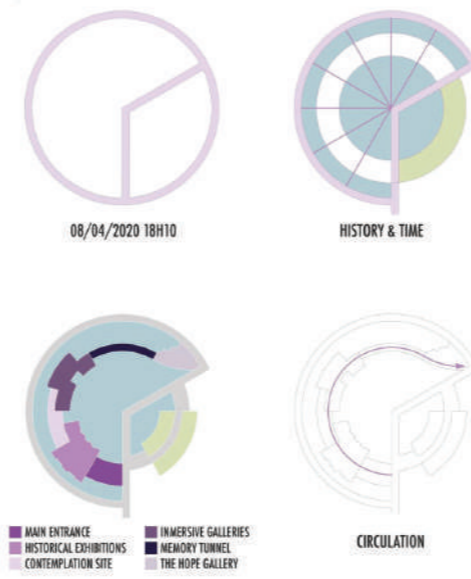
BEIRUT GRAND SILOS

Honor needs to be paid to the magnificent 60-meter-tall silos that took the blow for the people of Beirut. Rather than reconstructing the damaged silos to their previous function-form, the new symbol of the city will acquire repurposed functions. People will be able to feel its immense scale from interior meeting places filled with natural light cannons of perforations. Twenty such openings will speak of the year when the tragedy happened.



CLOCK MUSEUM

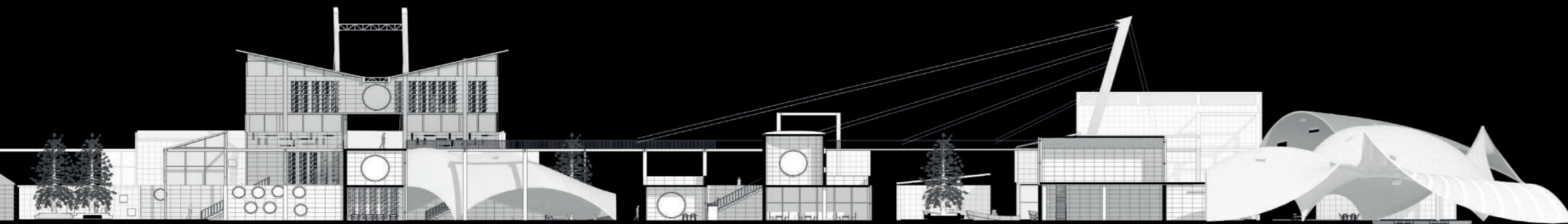
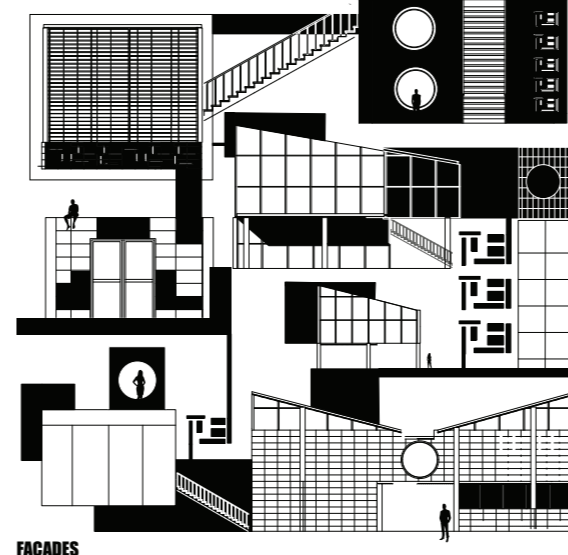
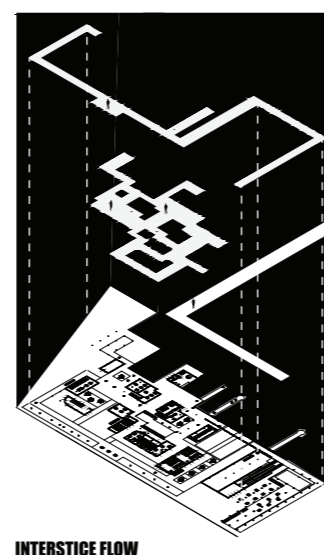
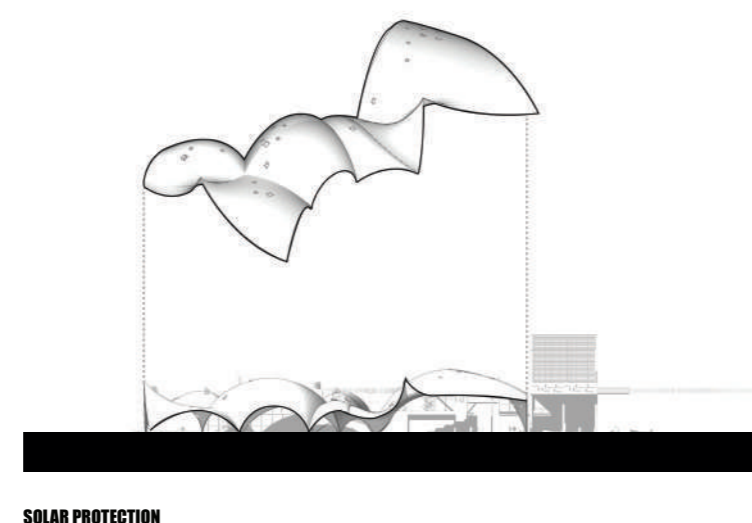
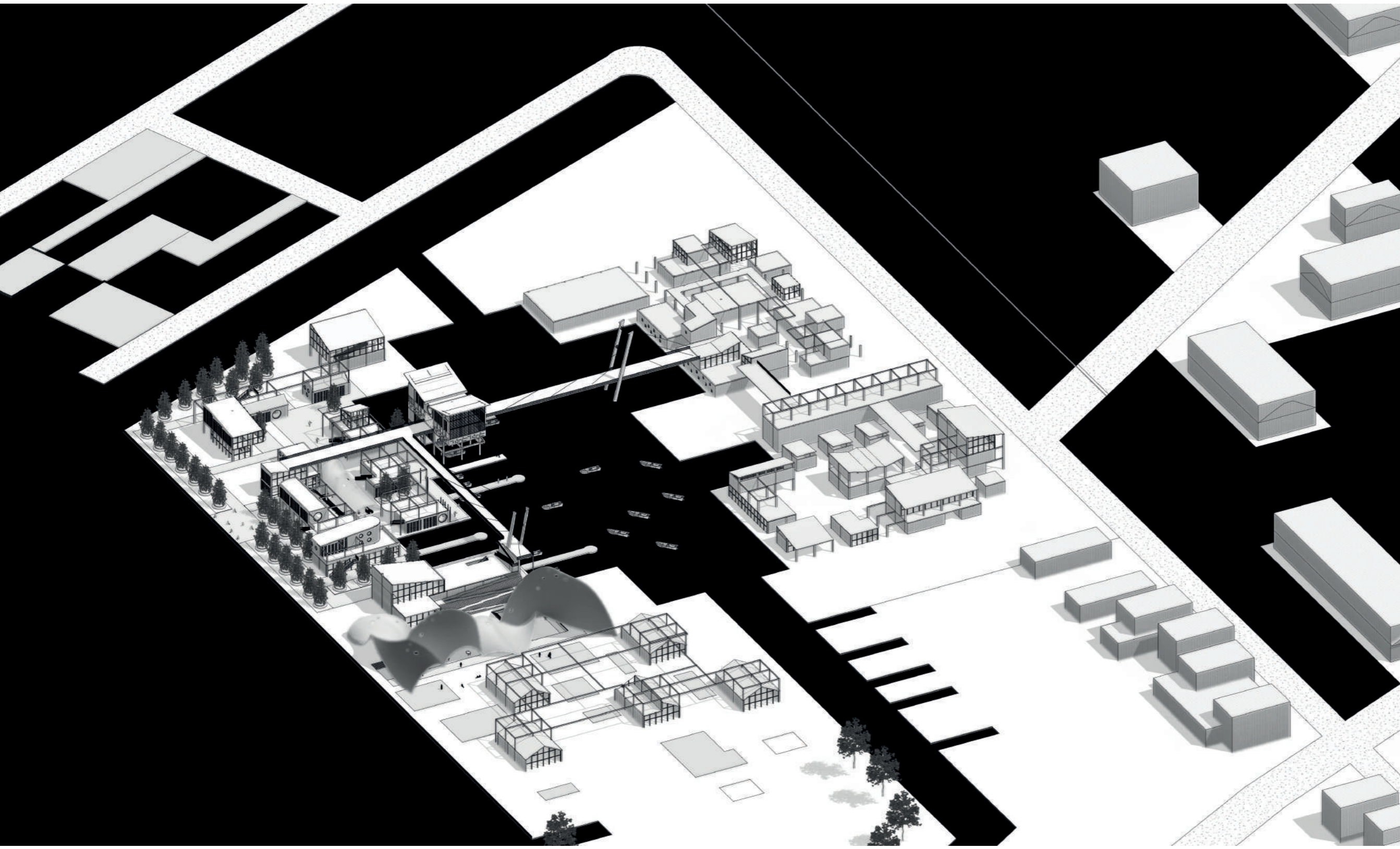
The clock shape museum dictates the hour when the catastrophe happened, and it is dedicated to the victims of the disaster that



To memorialize the time and place of the event, a dial clock feature will act as a mindful marker that while time passes, live

WHAT IF THE ARTISTIC ZONE IS....

rebirth of equality thinking



CONCEPT

Our goal was to change the experience of entering this place, forget the negative memories and enjoy being inside it. Beirut's memorial is designed to be a place where the citizens can go, remember what happened but also know that there is a way to learn from the past and move

PERGOLA WALKING TRAILS



OUTDOOR THEATRE



BEIRUT GRAND SILOS & CLOCK MUSEUM



The revival of art as a search for equality. Within the armistice, art becomes the link between cultures and religions. Which seeks to feed the artist from the horizon of the sea, the green area that surrounds it, the appreciation of the Industrial Port and the visual constant of the city of Beirut.

FLEXIBLE AND LUDIC ZONE



STUDENTS PORT



NIGHT VIEW OF MAIN BUILDING

