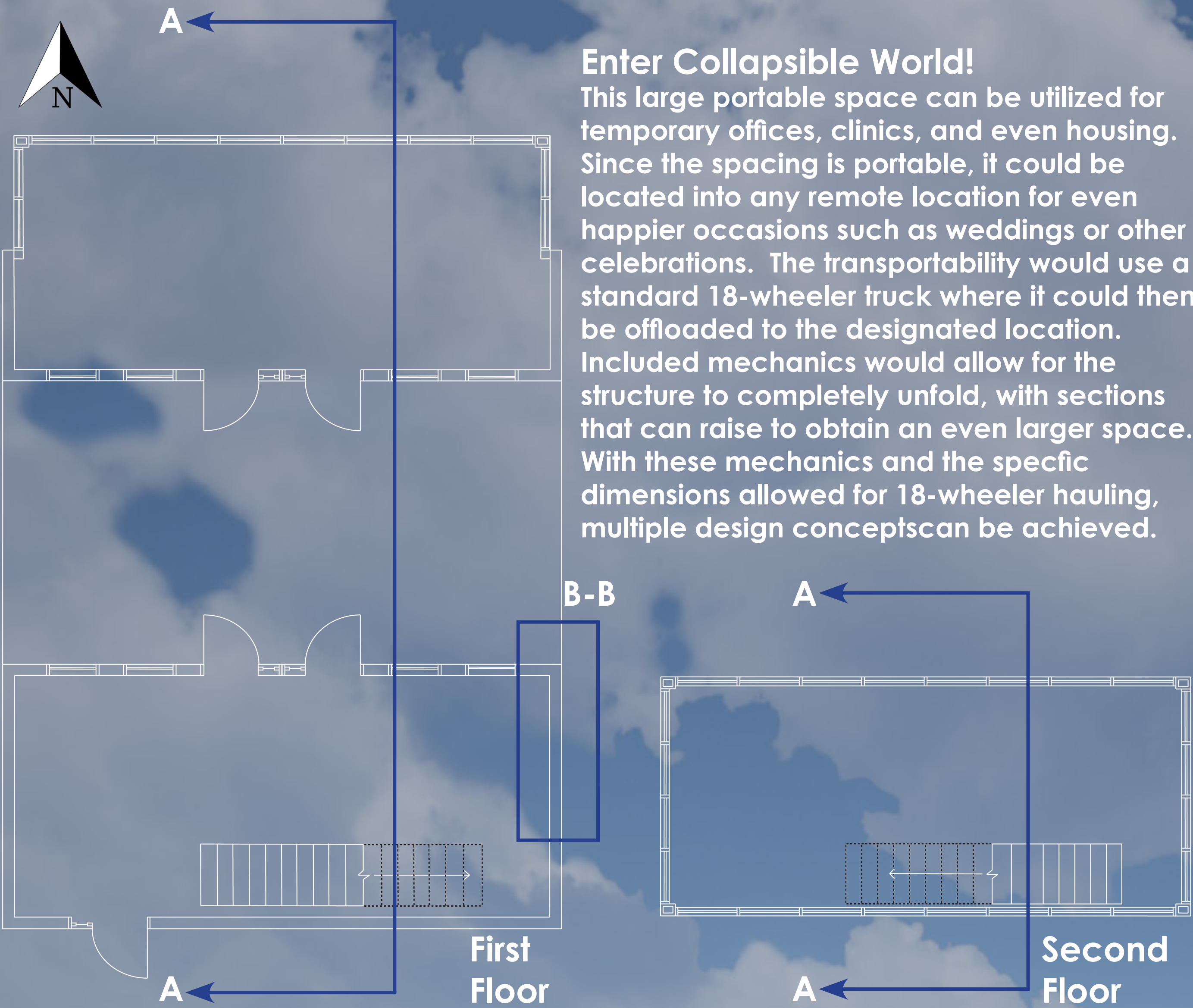
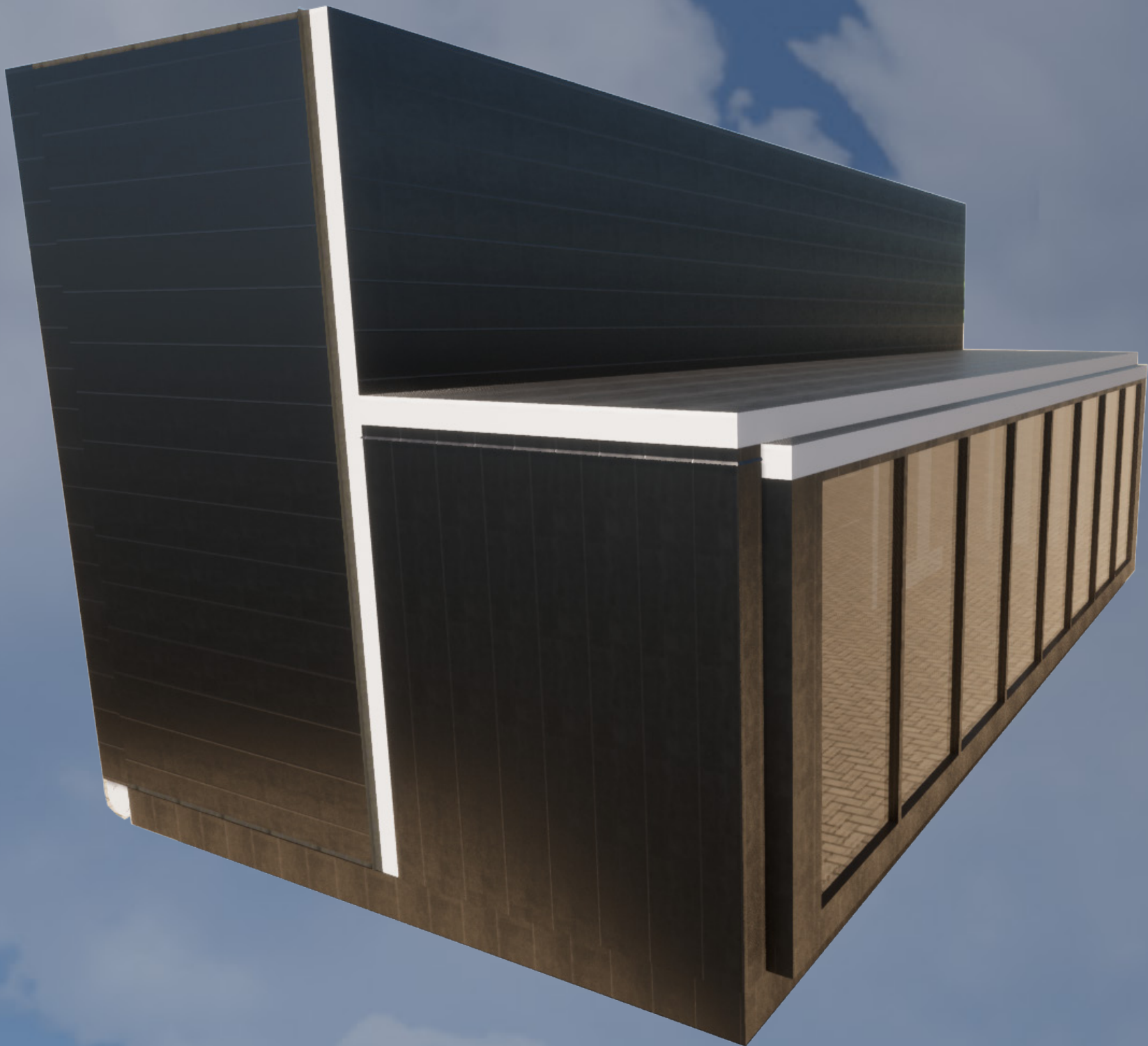


Collapsible World

Catastrophes happen! Hurricane Katrina, Harvey, the numerous tornadoes that occur almost daily somewhere, and even the recent Pandemic. Insurance companies, FEMA, and even relatives try to reach the areas of catastrophic damages. Today there are portable tents being used for COVID testing and issuance of vaccines.

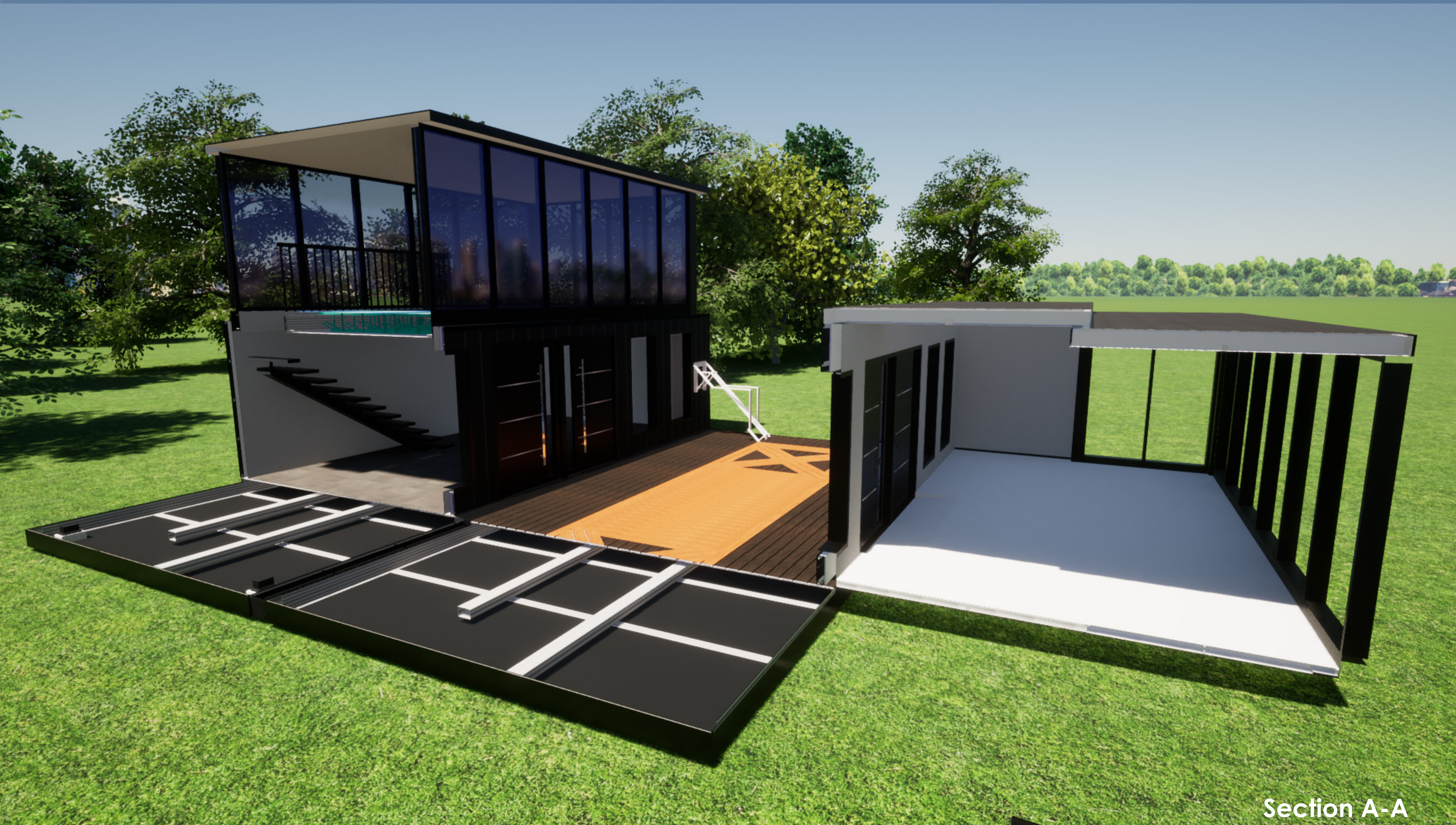


Enter Collapsible World!
This large portable space can be utilized for temporary offices, clinics, and even housing. Since the spacing is portable, it could be located into any remote location for even happier occasions such as weddings or other celebrations. The transportability would use a standard 18-wheeler truck where it could then be offloaded to the designated location. Included mechanics would allow for the structure to completely unfold, with sections that can raise to obtain an even larger space. With these mechanics and the specific dimensions allowed for 18-wheeler hauling, multiple design concepts can be achieved.

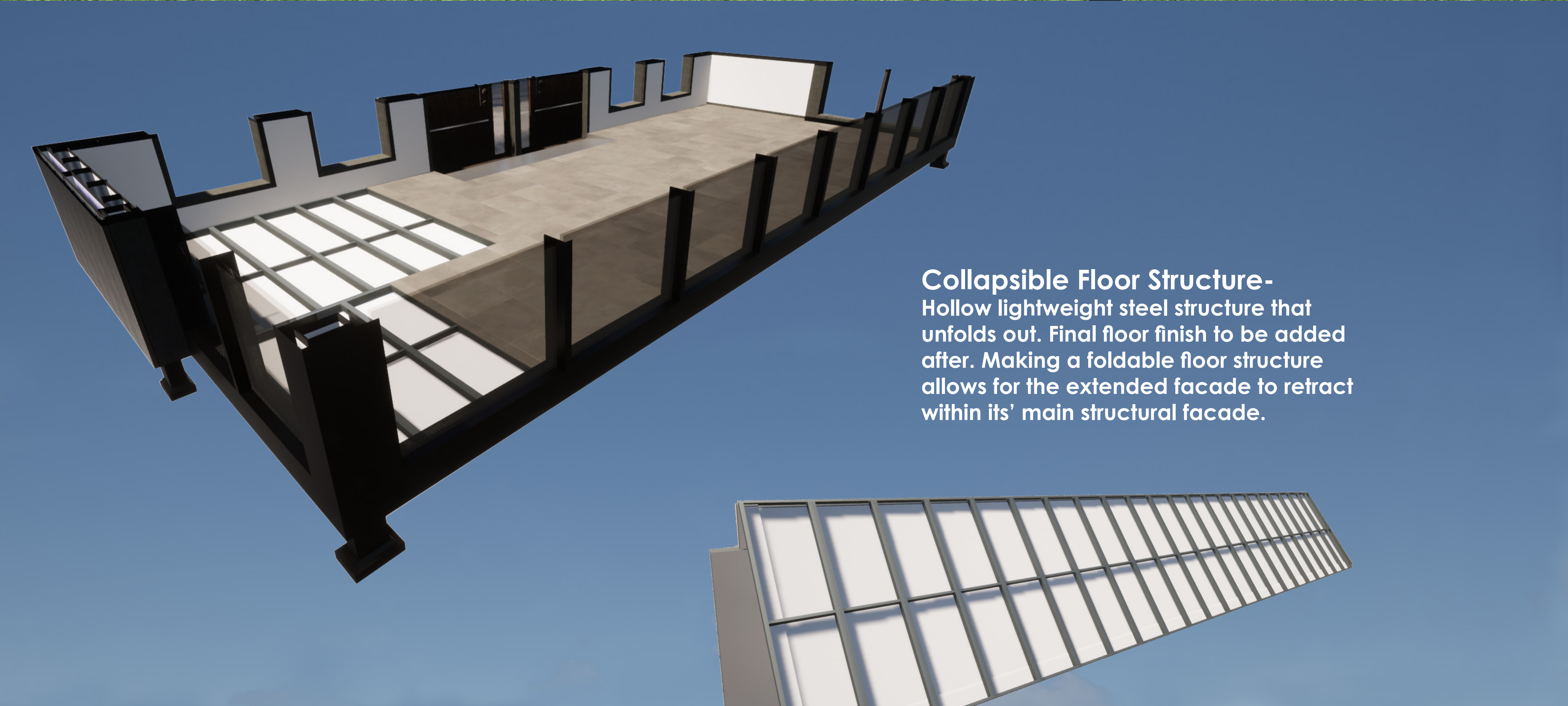


Collapsed Space
With the help of unique mechanical components, the space can be closed into a boxed form to be transported where it may be needed.

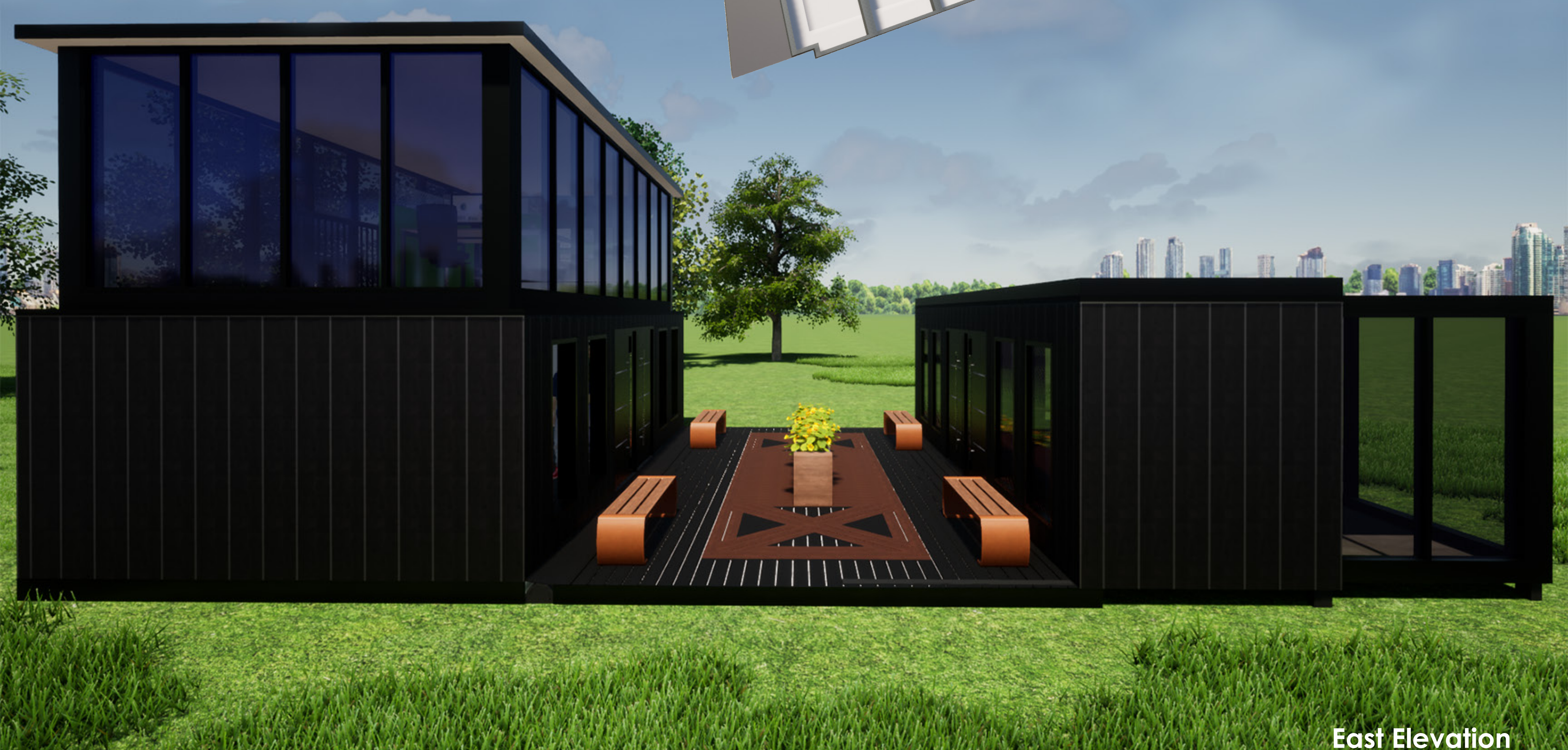




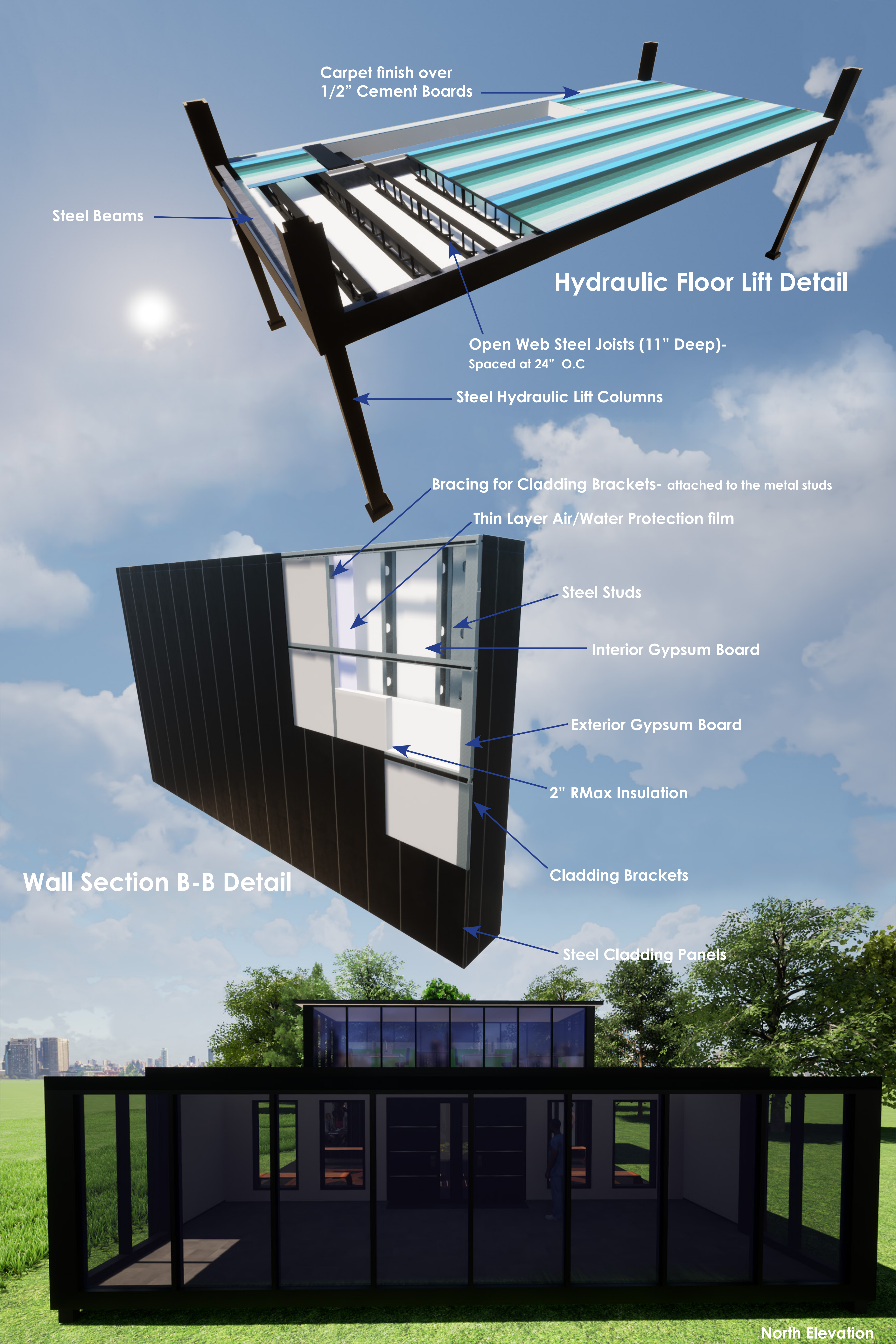
Section A-A



Collapsible Floor Structure-
Hollow lightweight steel structure that unfolds out. Final floor finish to be added after. Making a foldable floor structure allows for the extended facade to retract within its' main structural facade.



East Elevation



Carpet finish over
1/2" Cement Boards

Steel Beams

Hydraulic Floor Lift Detail

Open Web Steel Joists (11" Deep)-
Spaced at 24" O.C

Steel Hydraulic Lift Columns

Bracing for Cladding Brackets- attached to the metal studs

Thin Layer Air/Water Protection film

Steel Studs

Interior Gypsum Board

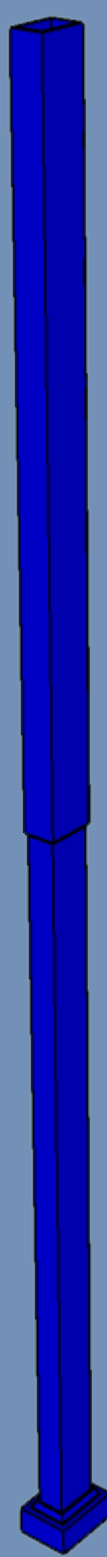
Exterior Gypsum Board

2" RMax Insulation

Cladding Brackets

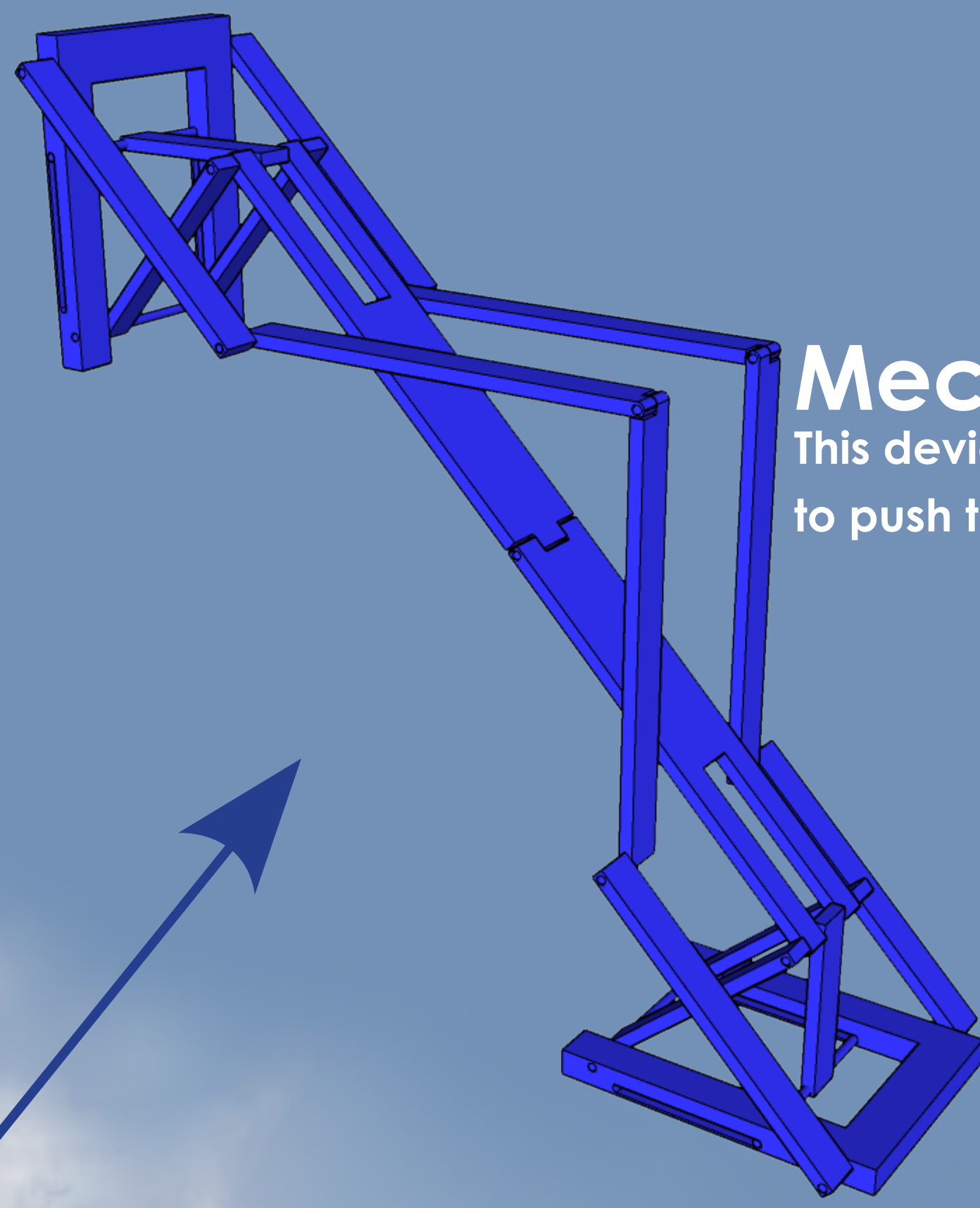
Steel Cladding Panels

Wall Section B-B Detail



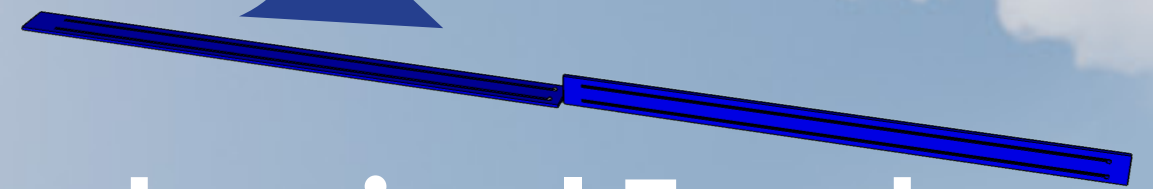
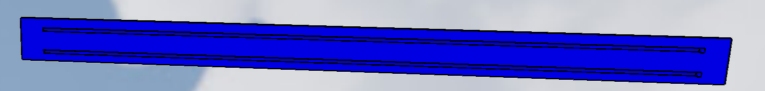
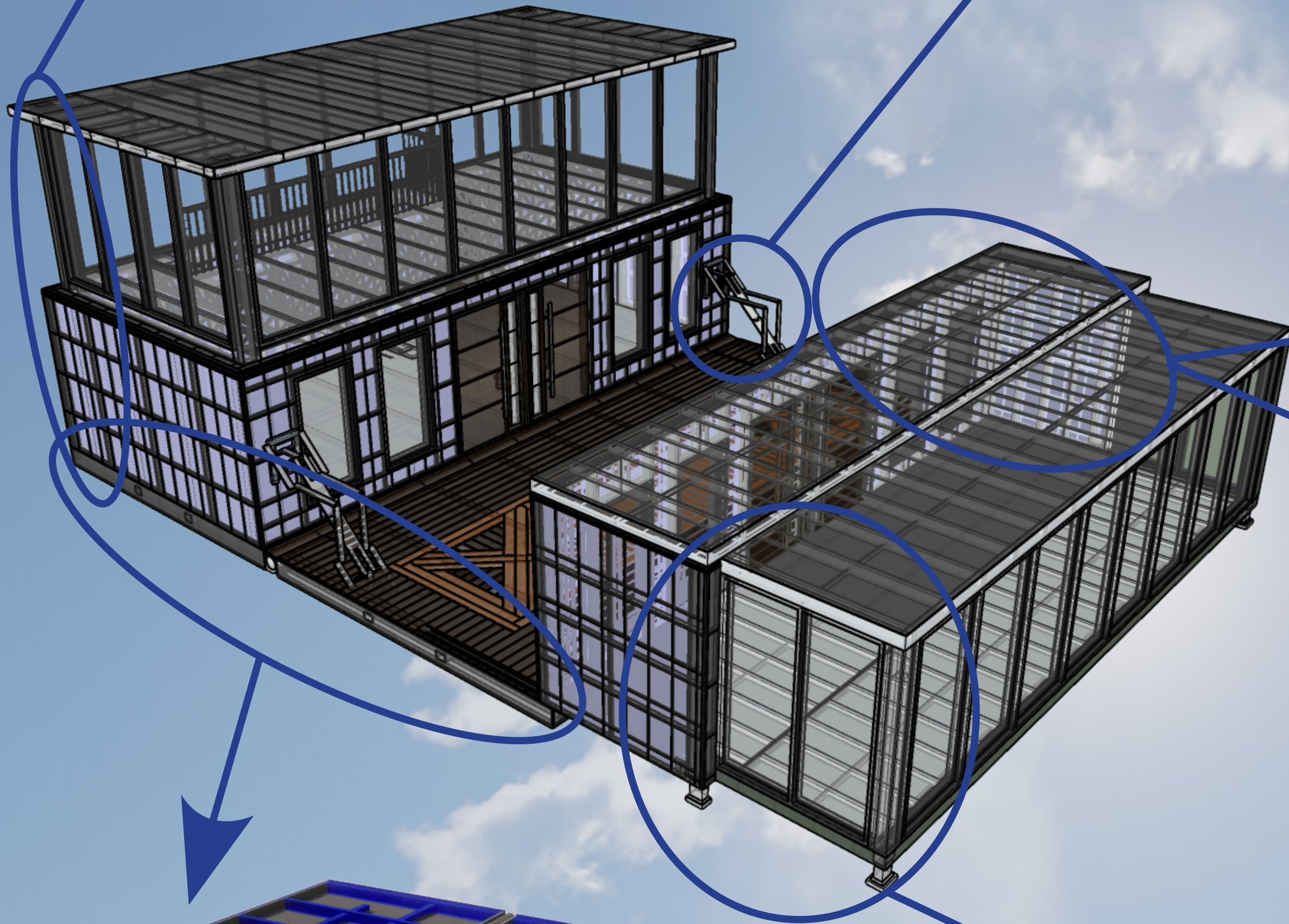
Hydraulic Columns-

Within the four columns used, this system would allow the second floor to be pushed up to its' position and then locked.



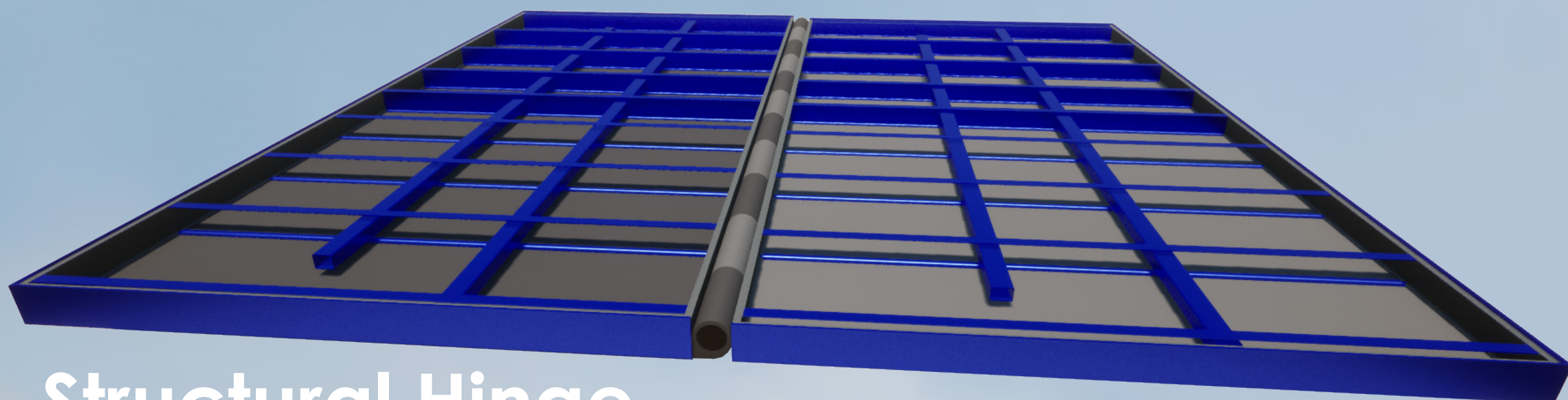
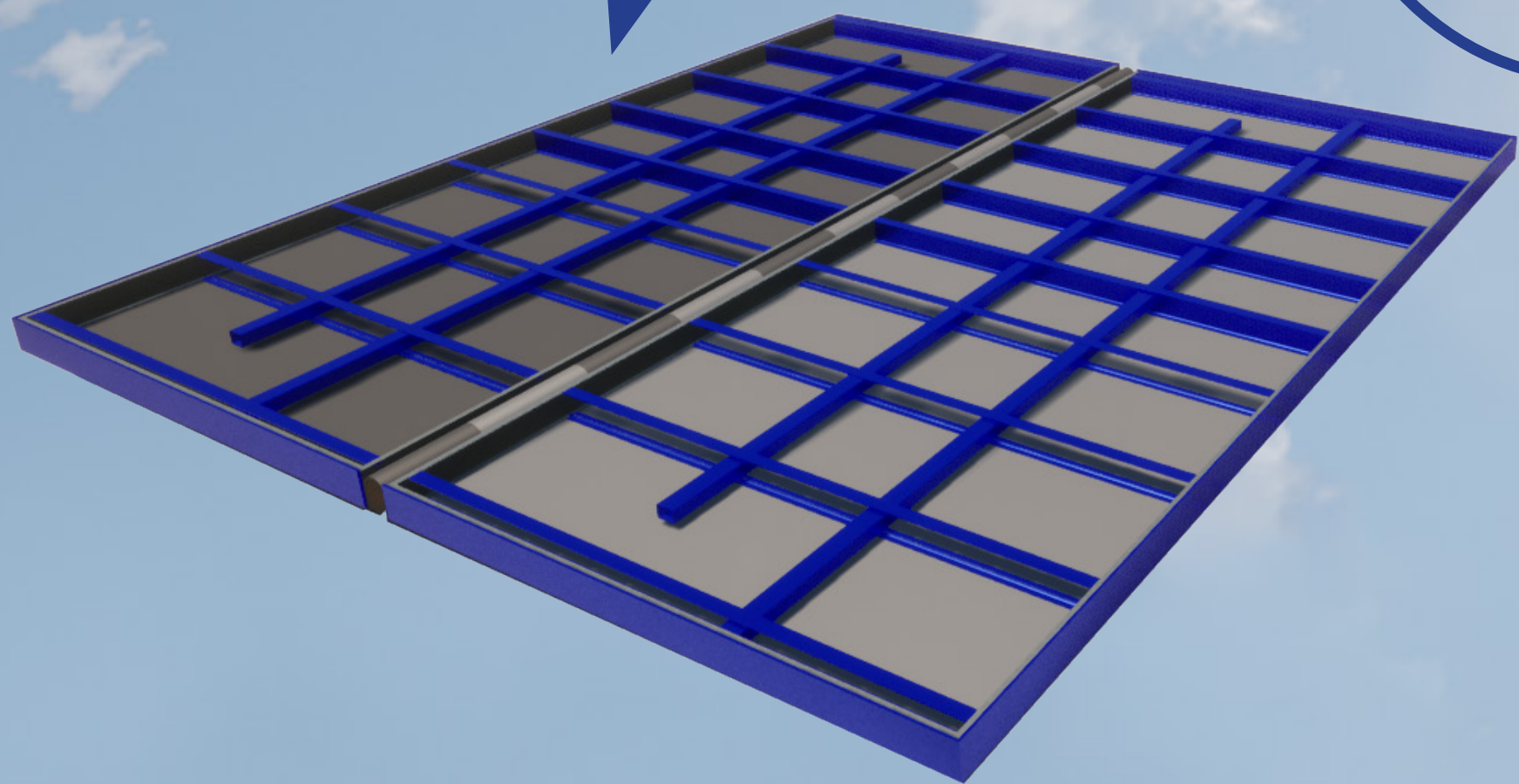
Mechanical Push-

This device will give enough force to push the structure open.



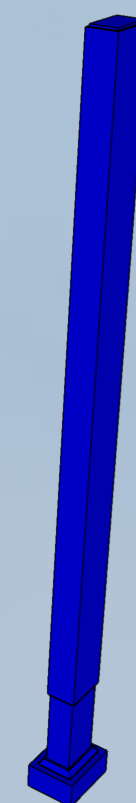
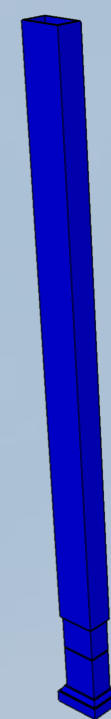
Mechanical Tracks-

Help extend the structure out and into a larger space.



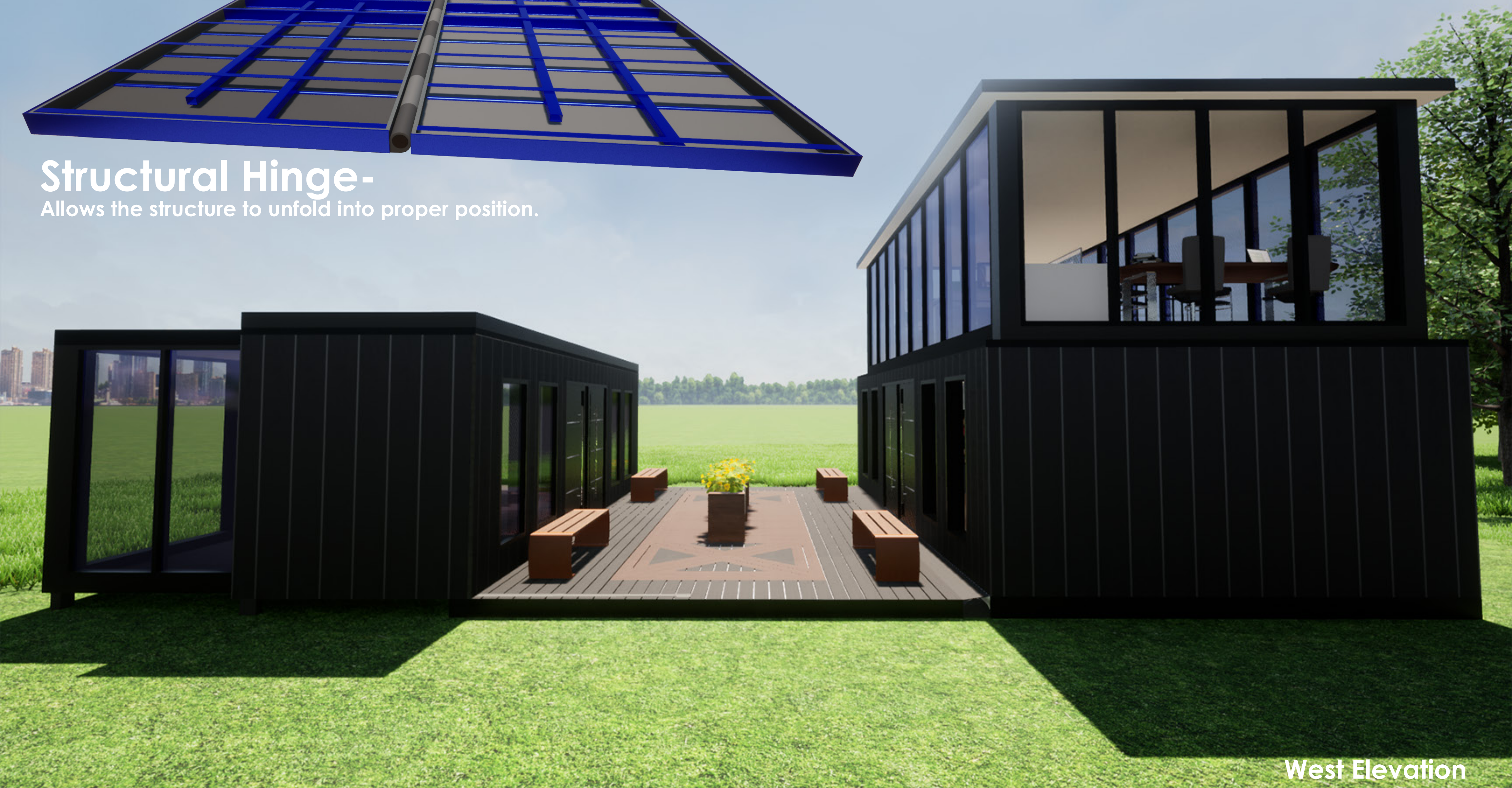
Structural Hinge-

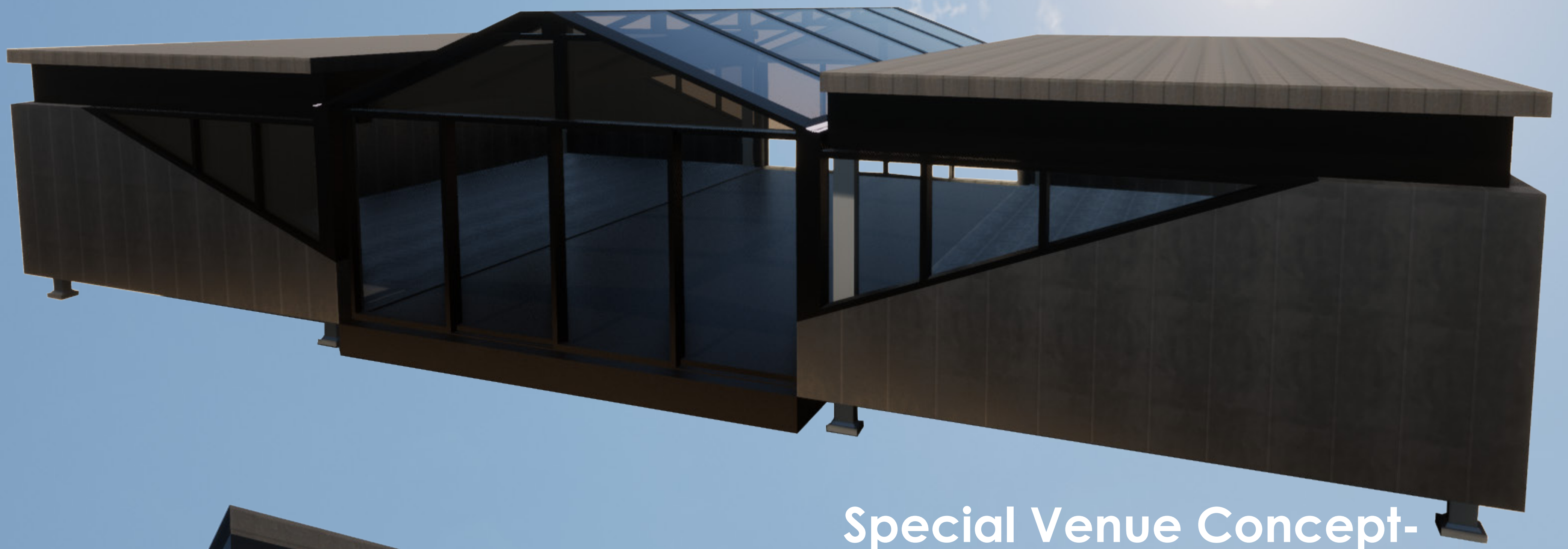
Allows the structure to unfold into proper position.



Small Hydraulic Columns-

The base of these columns come out to hold the weight of the extended structure.





Special Venue Concept-

Education, Sports, Shelter, Meetings, Weddings, etc...
More open versatile design.



Residential Design Concept



South Elevation