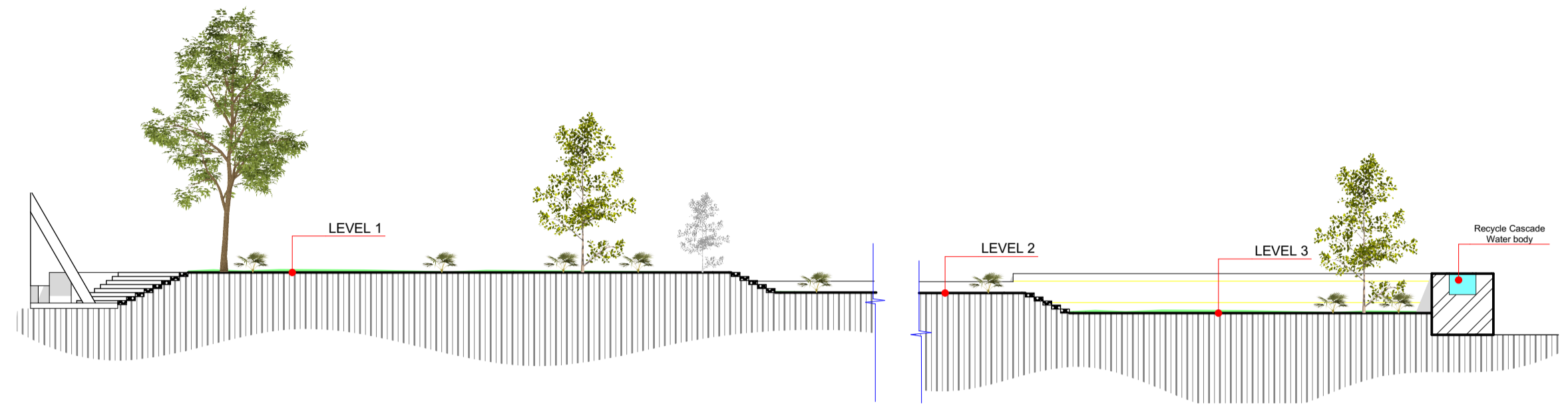
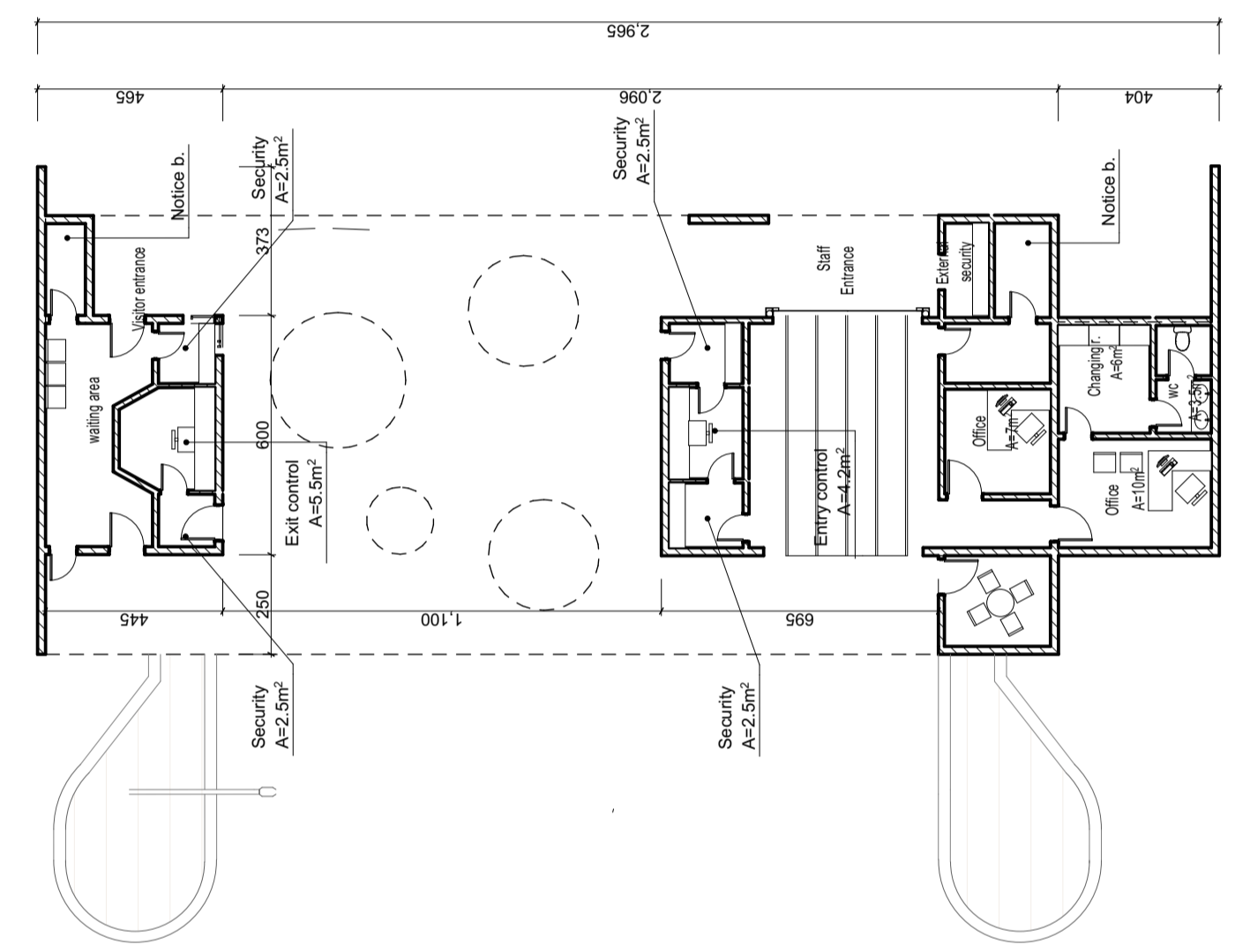


1 SITE PLAN

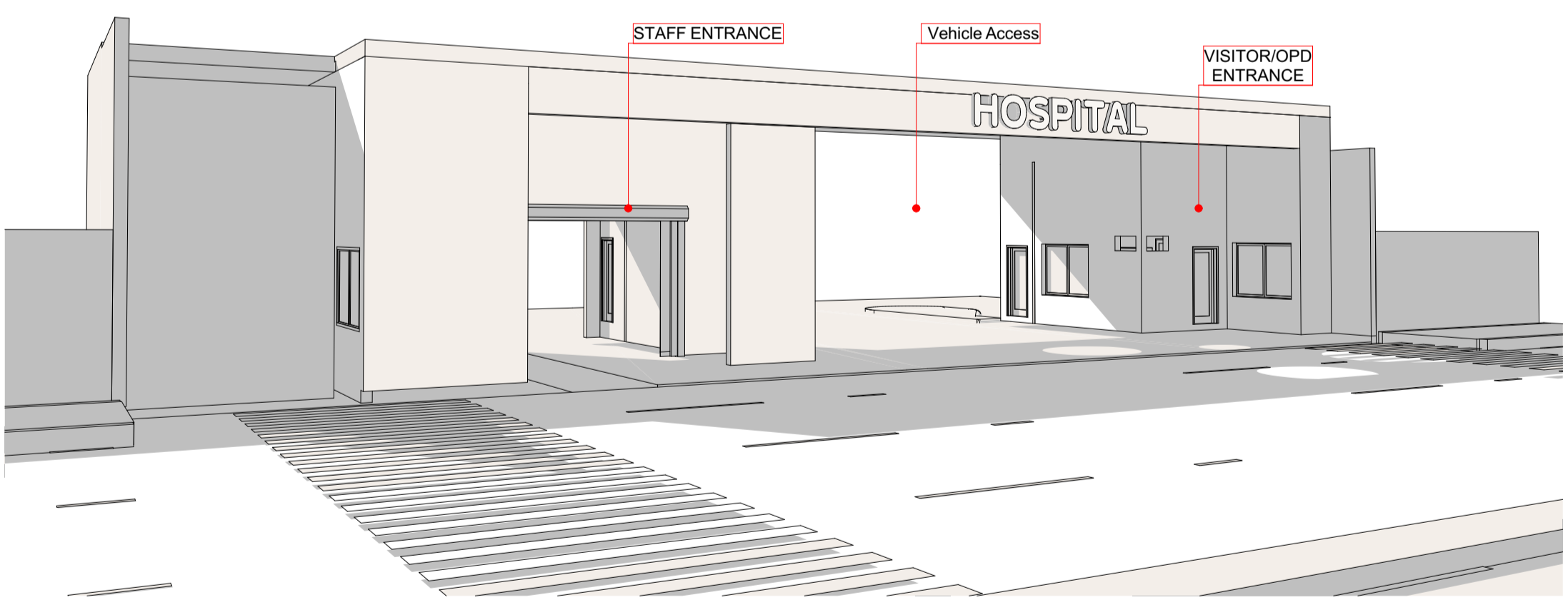


2 Stepped landscape A-A

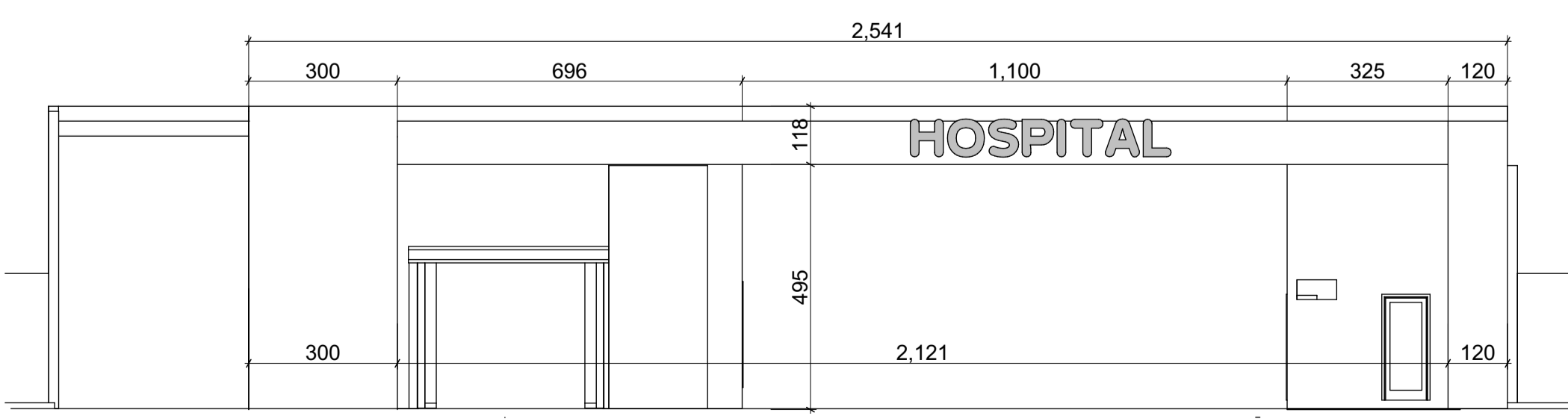


1 MAIN ENTRANCE

- Playing** is extremely important for children. It not only provides enjoyment, but also leads to an interaction and exploration of the environment.
 - Benefits of play
 - Enjoyment
 - Enhance interaction and exploration
 - Improve children understanding and interpretation of hospital
 - Design Guidelines
 - Design playrooms and play areas with toys and games
 - Provide a space for play in bedrooms
- Art** is other considered positive distraction in healthcare settings, with proved impact on stress reduction and mood improvement.
 - Patients' relation with art
 - Considered a positive distraction
 - Absence of therapeutic effects
 - Preference for nature images
 - Design Guidelines
 - Provide rooms with an art cart
- Nature** constitutes not only a positive distraction, but it also has proved health benefits, recognised for centuries.
 - Health Impacts
 - Reduce stress levels
 - Reduce health related complaints
 - Reduce pain medication
 - Decrease hospitalisation period
 - Potential activities
 - Play games
 - Sports
 - Rehabilitation exercises
 - Sitting outside
 - Taking a stroll
 - Dozing/happening/meditation/prayer



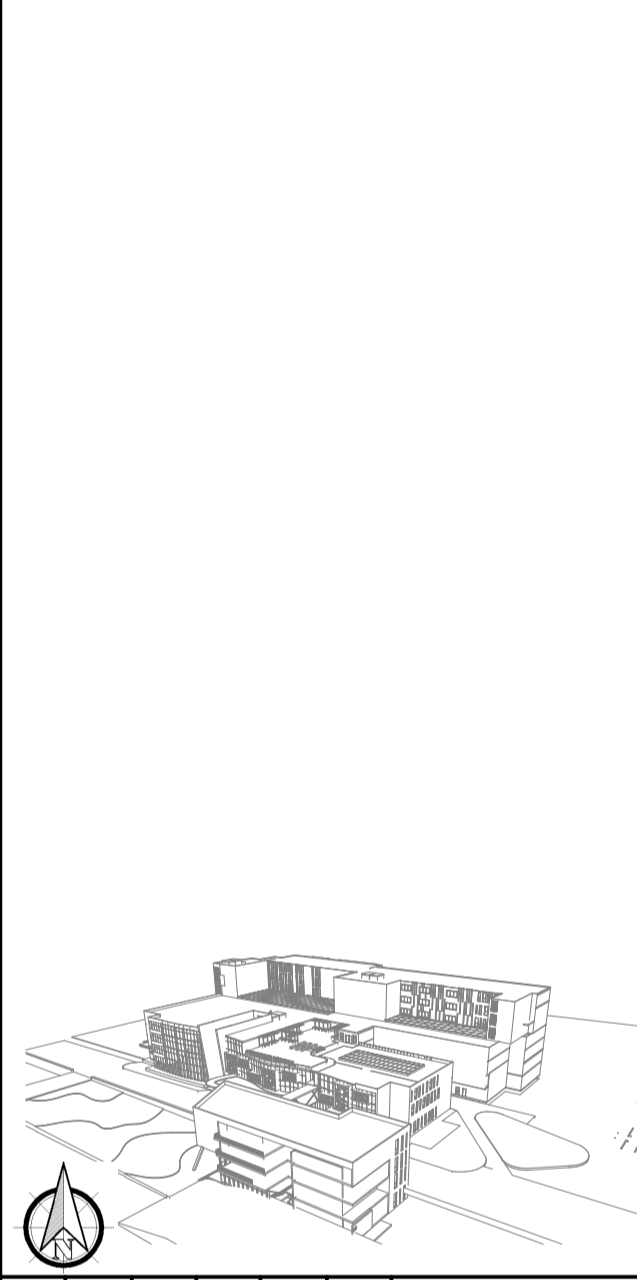
1 MAIN ENTRANCE



General Description

- A** Mani Building
- B** Open Down
- C** Pavemnt around Building
- D** Photovoltaic Solar energy
- E** Greenery
- F** Roof Garden
- G** Entrance
- H** Separate from the main road
- I** Outdoor therapeutic landscape zone for Children's & Family

Legend



E A A K S

Project
HOSPITAL
(Pidatric)

Drawing Title
SITE PLAN



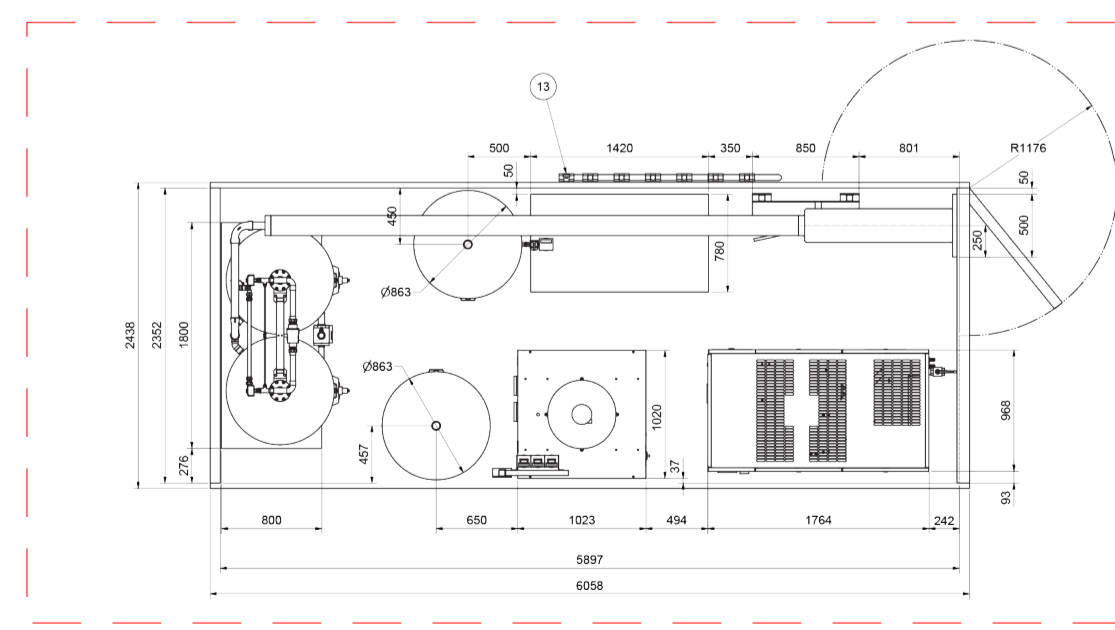
Design By:
Abel Kefay UUS5601E

Instructor:
-JDRIS
-HENOK

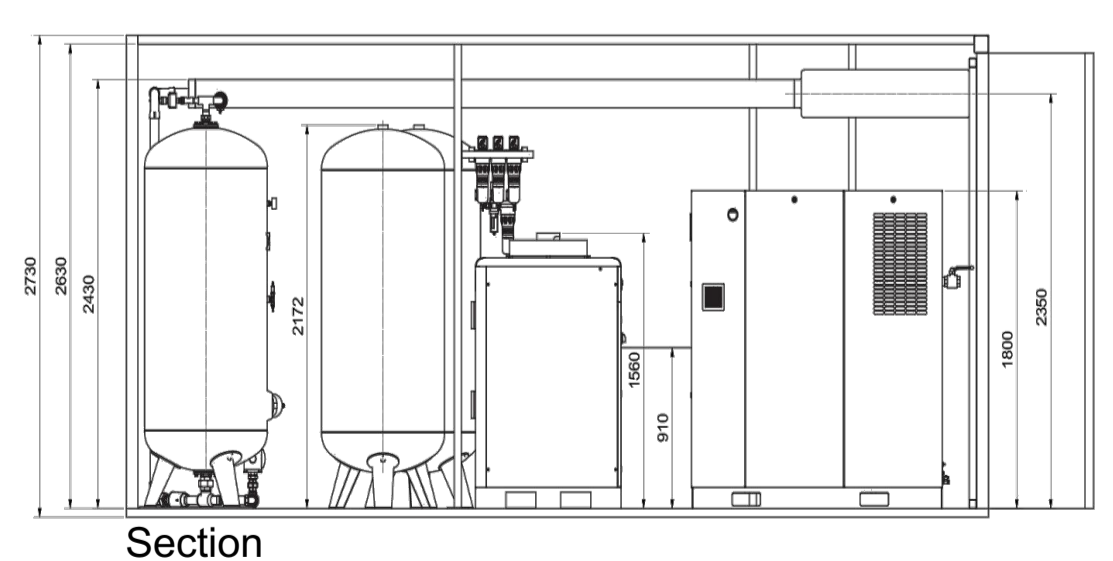
Project Number **01**
6/15/2018 **01.01**



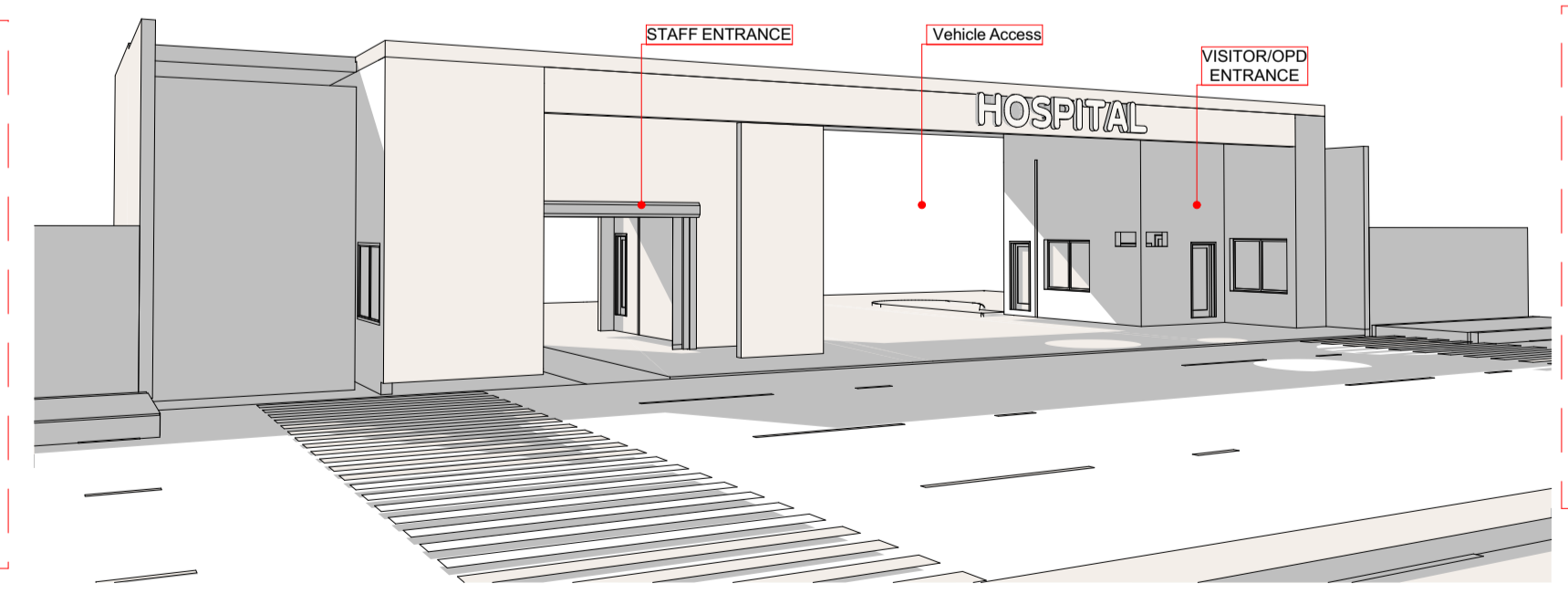
1 BASEMNT FLOOR PLAN



DETAIL G- Oxygen generator Room



Section



Level -1

Hygienic Laundry Facilities at Hospitals

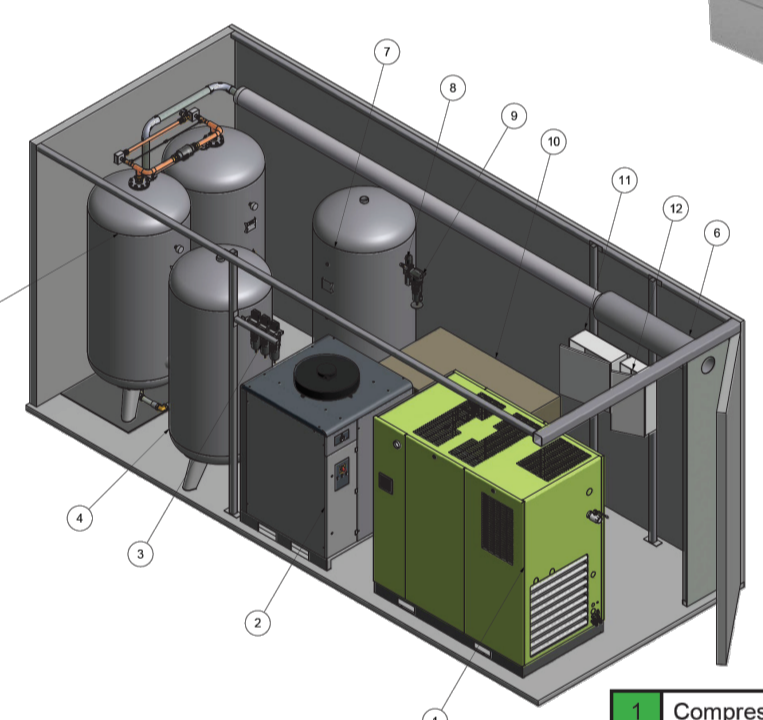
Cleanliness and hygienic conditions have greater importance at today's hospitals.



- Transfer Type Tunnel Washing Machine
- Capacity options from 1200 to 2500 kg per hour
 - Highly technological structure which can transfer the textiles and the bath with the help of the partition wall mechanism completely to the next compartment (pre and main wash processes)
 - High energy and time saving provided through high speed extraction at drying and ironing processes.
 - Electric or steam heating options

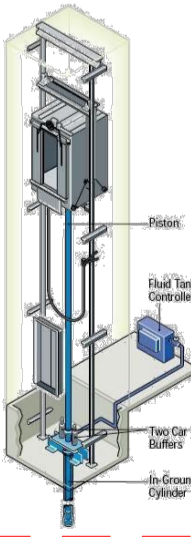
Loading Conveyor with Lift
With single or double compartment, with availability for horizontal and vertical movement and providing connection between press and drying, capable of loading many extractors at a time this conveyor is micro processor controlled and has electronic indicators.

Hygienic Laundry Facilities at Hospitals



| | |
|---------------------------|---------------------------|
| 1 Compressor | 8 Filter Regulator |
| 2 Refrigerant dryer | 9 TGA108 Filter |
| 3 Filters DD-PD-QD | 10 High pressure booster |
| 4 Air receiver | 11 Fuse Box |
| 5 Oxygen generator | 12 Controller |
| 6 Exhaust Pipe (Silencer) | 13 Oxygen Filling Station |
| 7 Oxygen tank | |

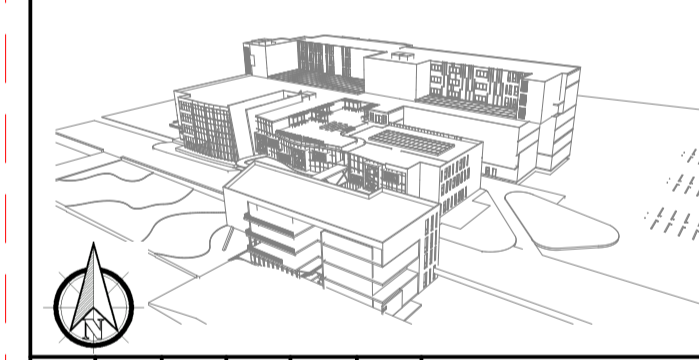
Filling Ramp for on site cylinder filling consisting of a high pressure bar with individual isolation valves at each cylinder connection. The cylinders shall be protected from over pressuring by a safety pressure relief valve and shall include a pressure gauge. The filling ramp shall be tested up to 30,000 kPa (300 bar) gauge and shall be supplied complete with test certificate (cylinders are NOT included).



- Hydraulic elevators are supported by a piston at the bottom of the elevator that pushes the elevator up.
- on this Project the elevator is used for clean/waste vertical transportation.
- From the bottom to the Upper floor.

General Description

Legend



E A A K S

Project
HOSPITAL
(Pidatric)

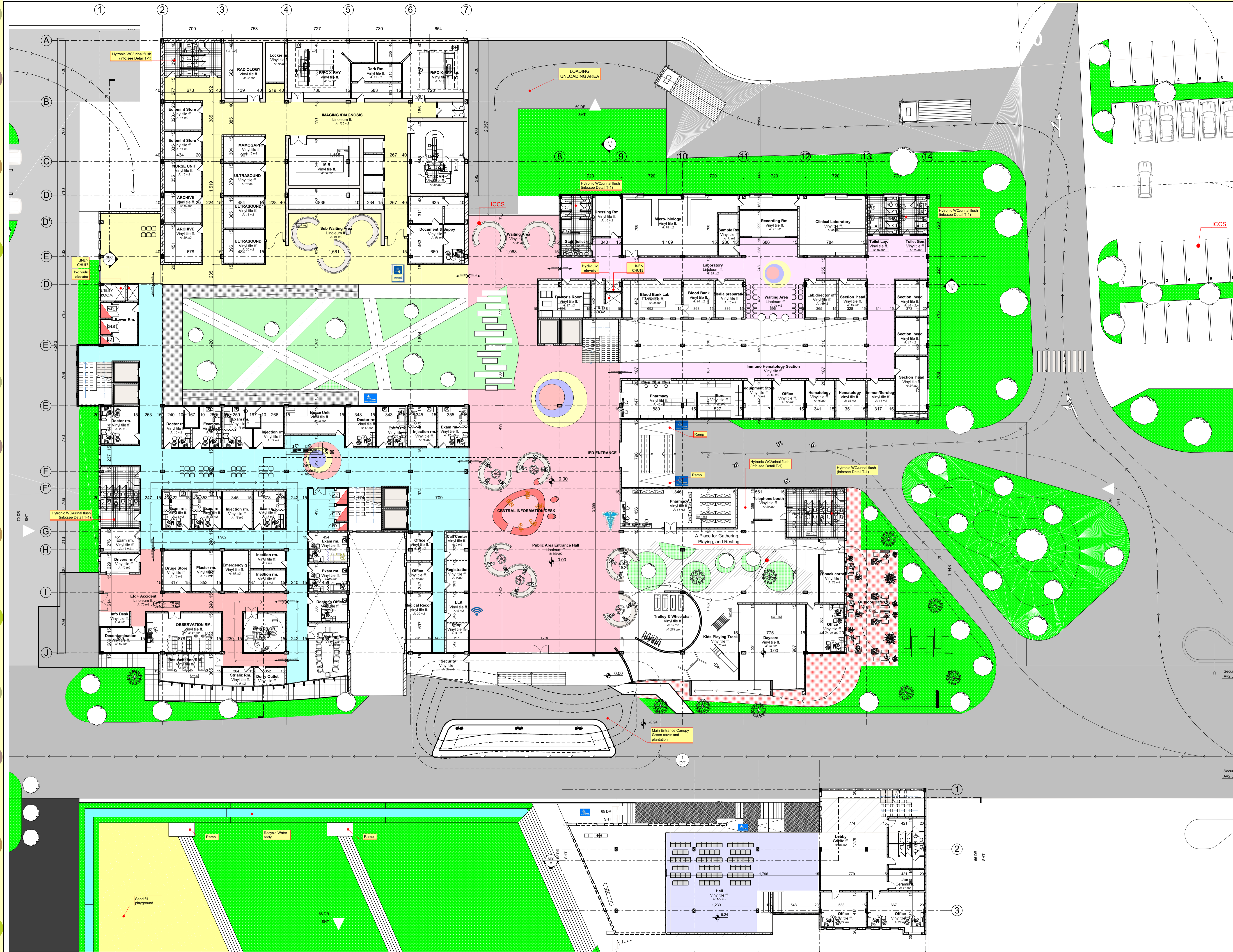
Drawing Title
BASEMNT FLOOR PLAN



Design By-
Abel Kefay UUS5601E

Instructor
-IDRIS
-HENOK

Project Number 01
6/15/2018 **01.02**



General Description

The first level of Children's Hospital has a range of amenities and services for patients and families. This floor serves as the main entrance to the hospital, filled with light and color specifically designed to encourage the healing process for our patients and their families.

Welcome Desk/Check In
Upon entering the hospital, you can head to the Welcome Desk (straight through the main entrance). The Welcome Desk attendees will direct you where to check in for your visit.

Radiology
The **Radiology Department** is located on the Ground floor behind ER. When you enter the hospital, visit the Welcome Desk and they will instruct you on how to check in for your child's radiology appointment or intelligent clinic check in system (ICCS). Types of radiology performed at the South Campus include MRI, general radiography, ultrasound, CT scan, fluoroscopy and sedation support.

MRI Ambient Experience
The hospital in Addis ababa to feature MRI with Ambient Experience, a special type of MRI where patients can choose from different light, music and visual display themes.

Gift Shop
The gift shop is located just behind the Welcome Desk on the Ground floor. Here, you can find holiday items, toys, stuffed animals, toiletries and much more – with all proceeds benefiting Children's.

Legend

E A A K S

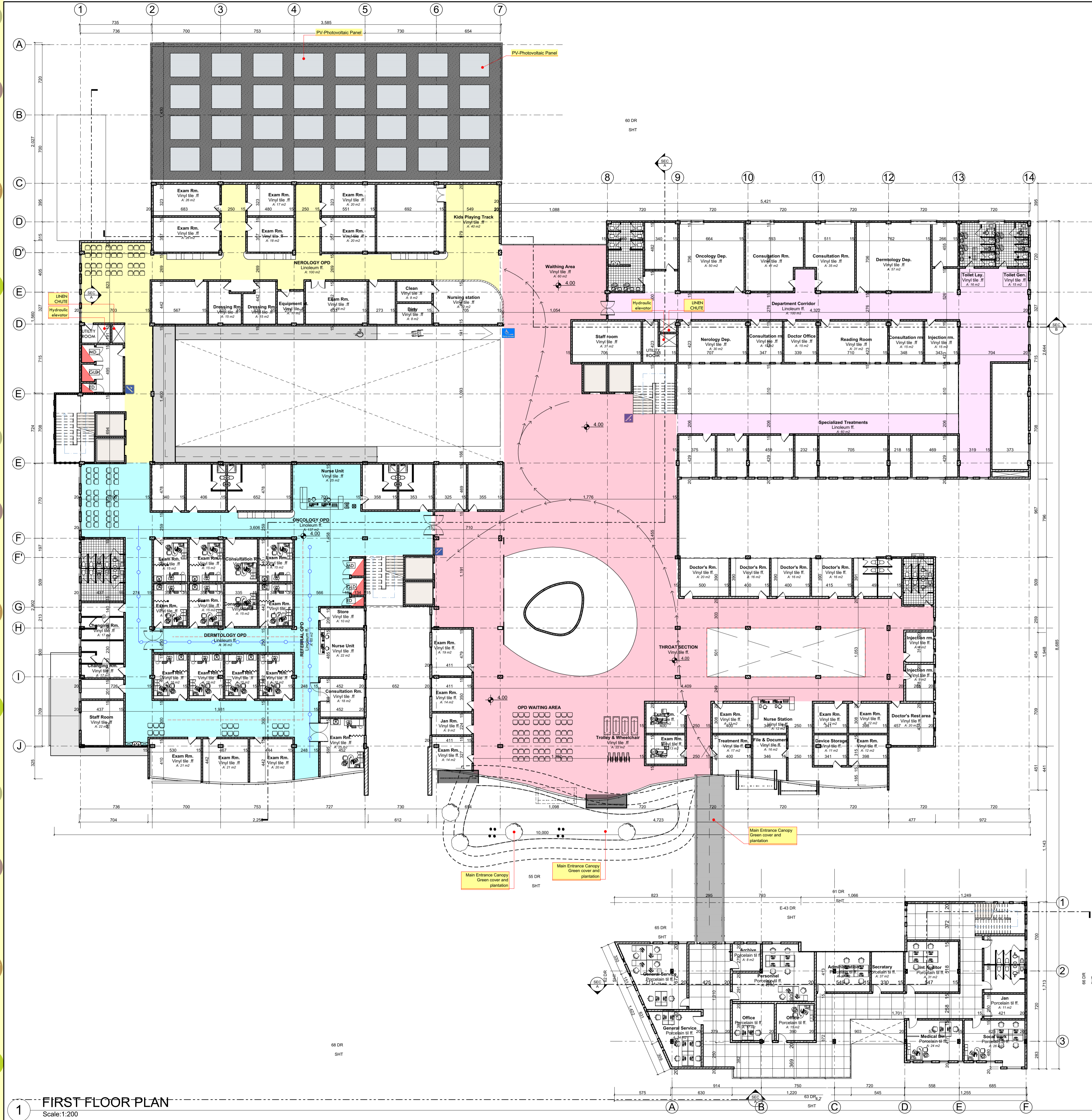
Project
HOSPITAL
(Pidatric)

Drawing Title
GROUND FLOOR PLAN

UNITY UNIVERSITY
Design By: **Abel Kefay UUS5601E**
Instructor: **-IDRIS -HENOK**

Project Number **01**
Date **6/15/2018**
Version **01.03**

1 GROUND FLOOR PLAN
Scale: 1:200

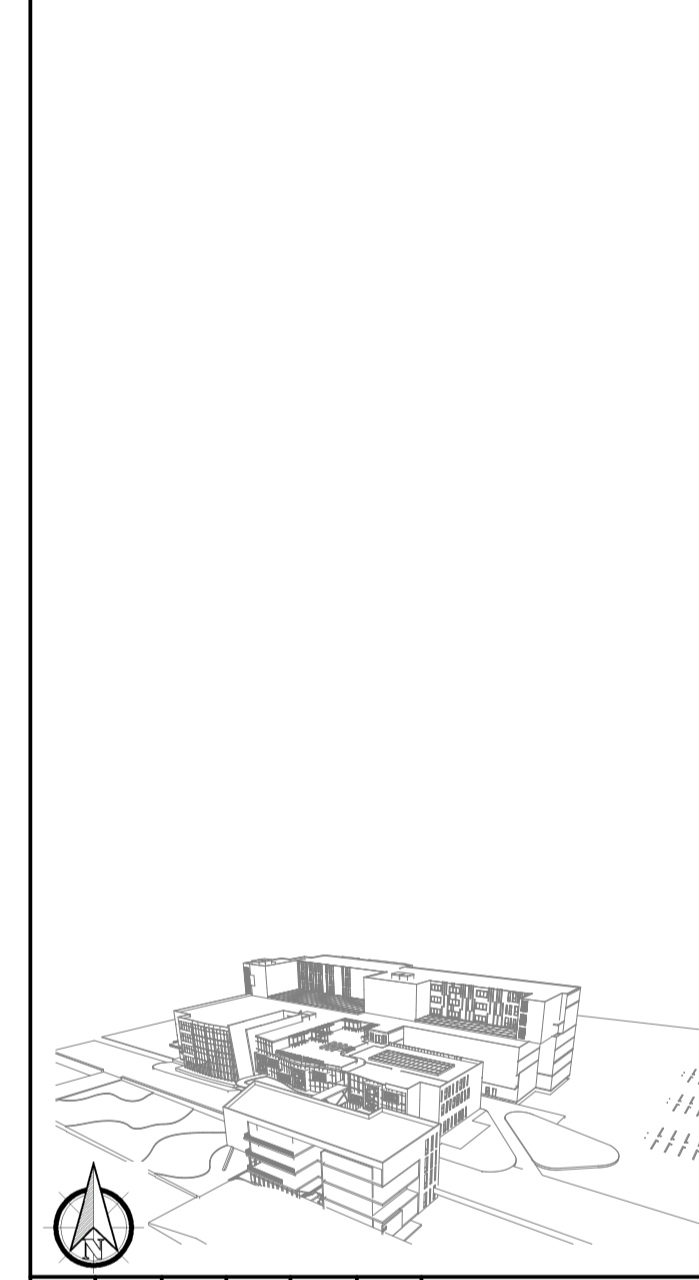


General Description

Level 1

The first level of Hospital Campus has a range of amenities and services for patients and families. This floor serves as Opd light and color specifically designed to encourage the healing process for patients and their families.

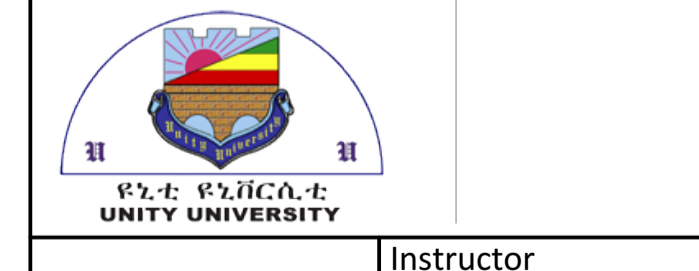
Legend



E A A K S

Project
HOSPITAL
 (Pidatric) 

Drawing Title
FIRST FLOOR PLAN



Design By:
 Abel Kefay UUS5601E

Instructor
 -IDRIS
 -HENOK

Project Number **01**

6/15/2018 **01.04**

FIRST FLOOR PLAN
 Scale:1:200

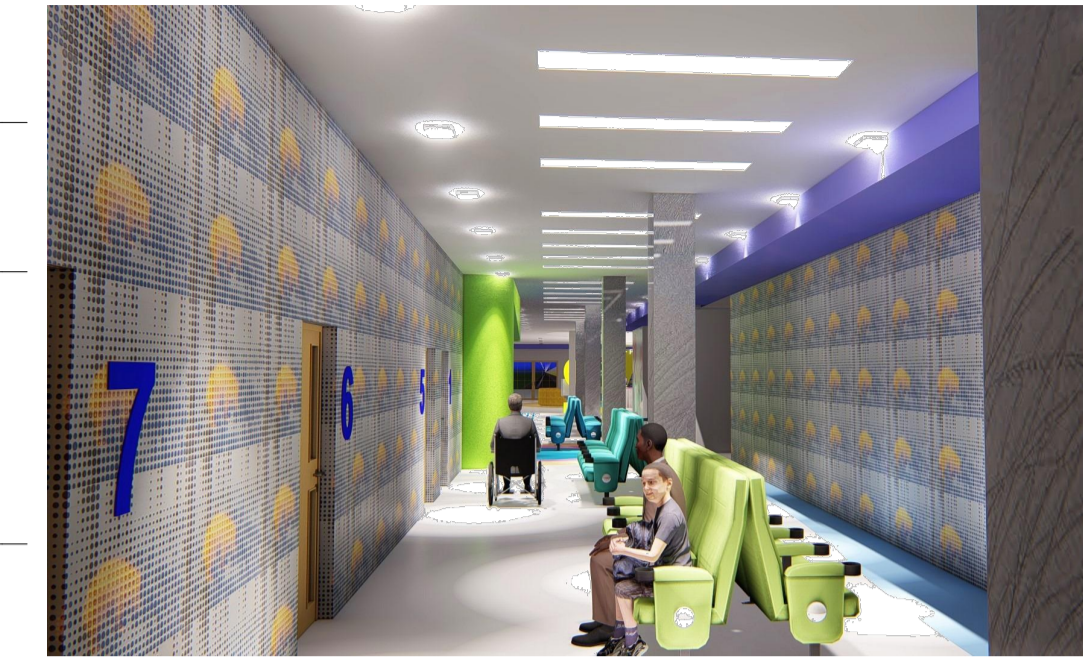
General Description

Level 2

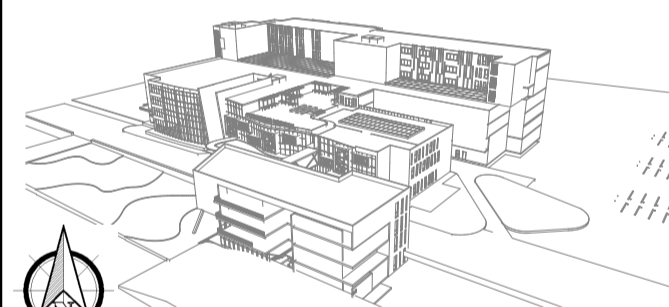
The Second level of Hospital with Privet rooms and equipment designed to easy the stress of having surgery for both the patient and family

Operating Rooms

The **Surgery Center** includes private recovery rooms and dual induction rooms staffed by pediatric anesthesiology and surgical specialists. If your child is having surgery, check in



Legend



E A A K S

Project
HOSPITAL
 (Pidatric)

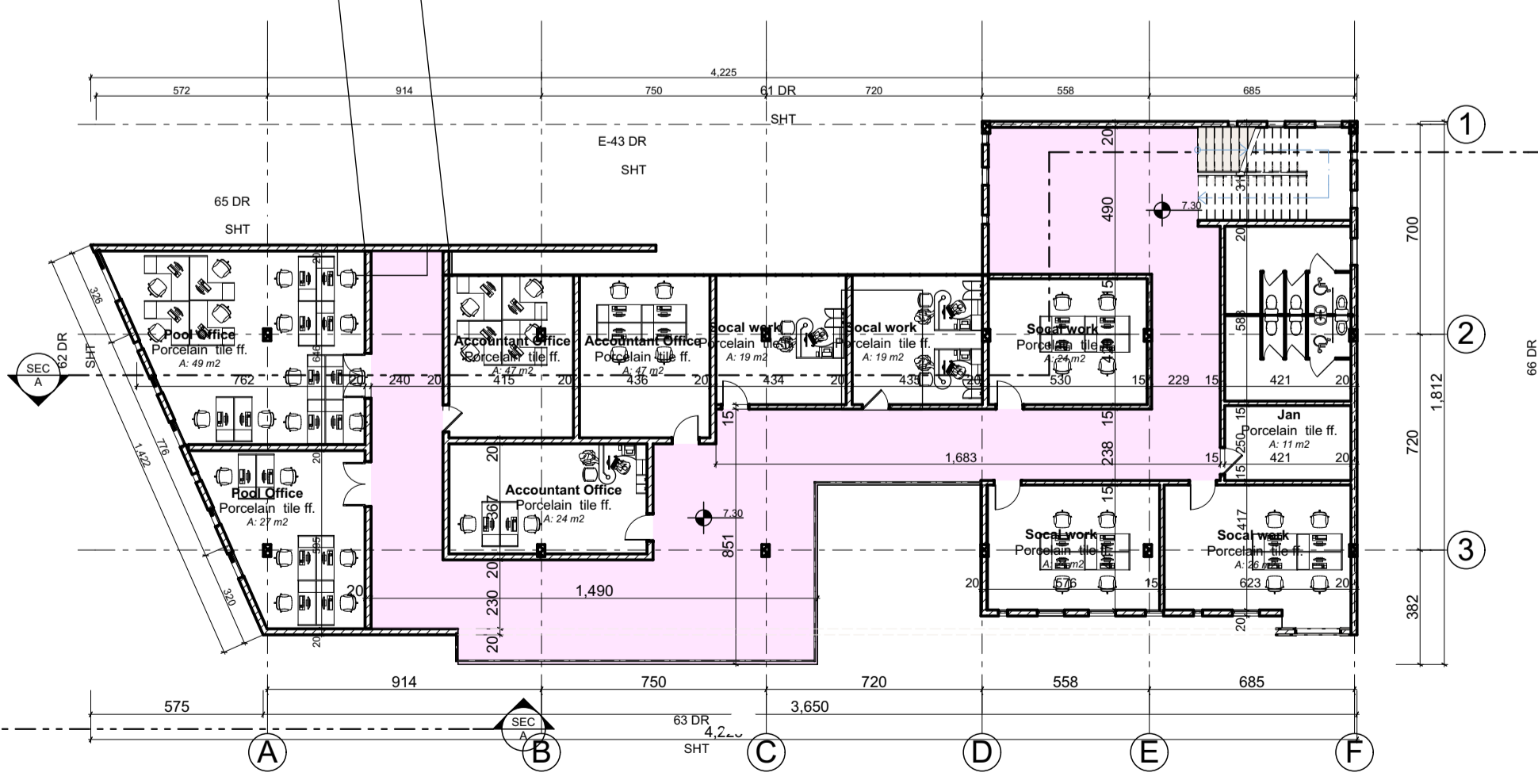
Drawing Title
SECOND FLOOR PLAN



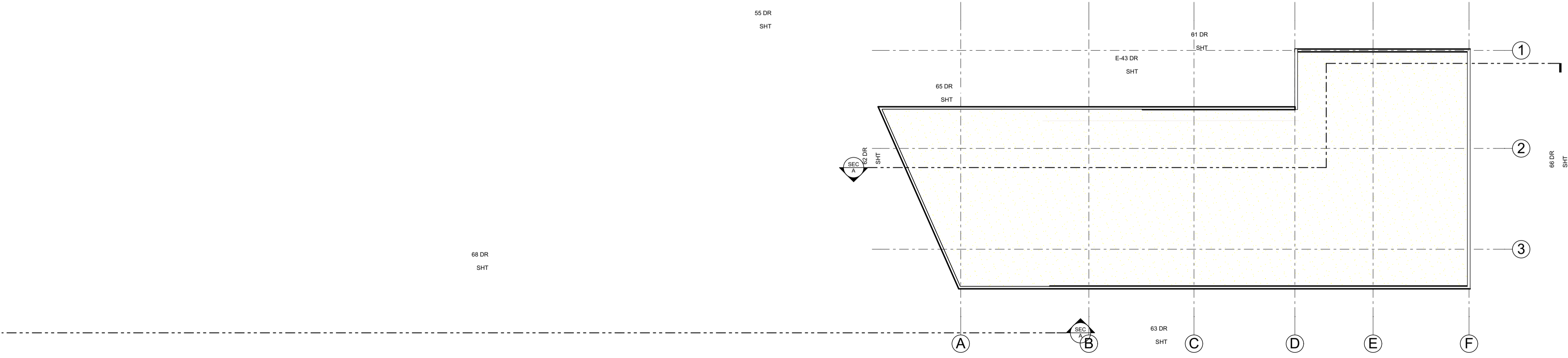
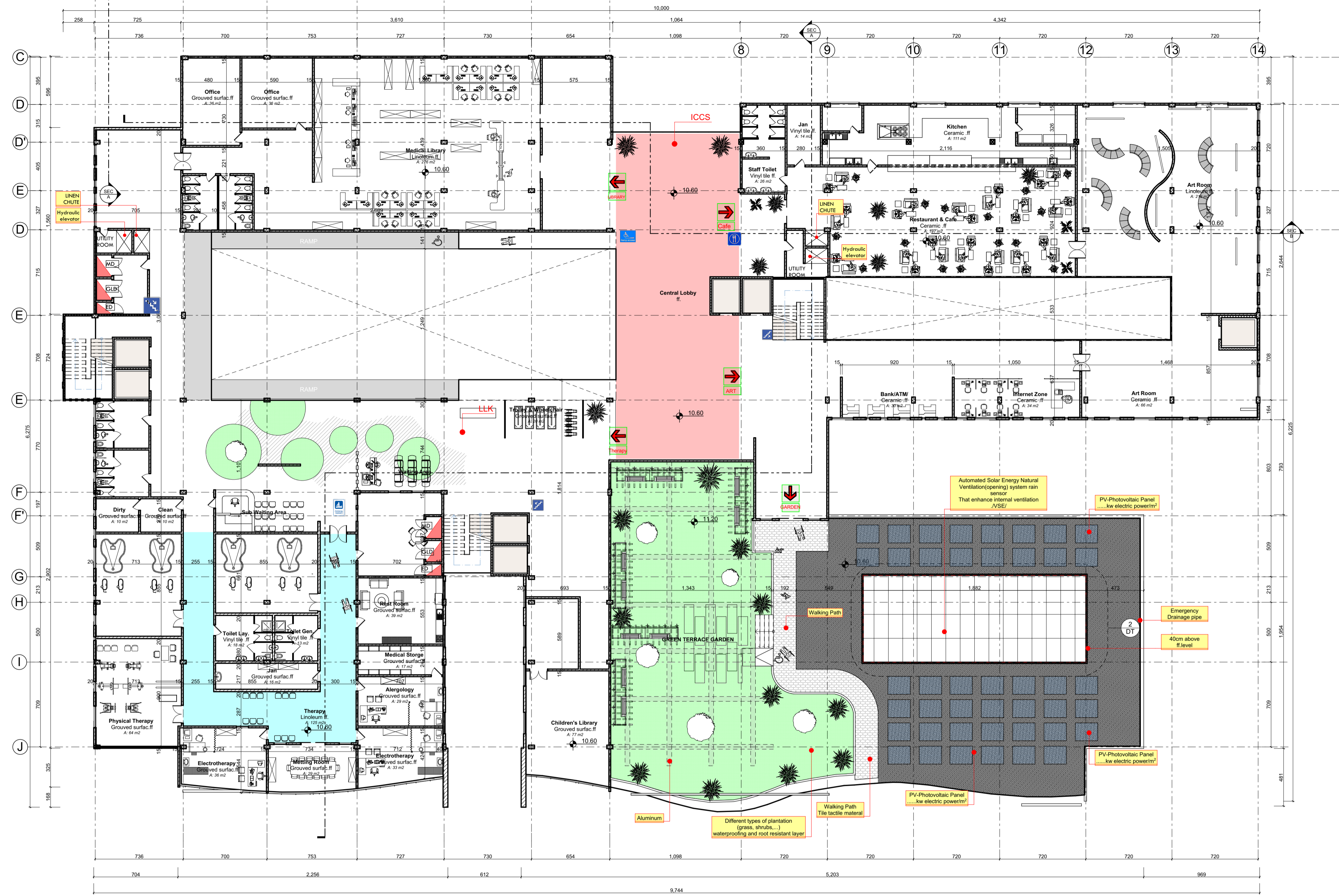
Design By
 Abel Kefay UUS5601E

Instructor
 -IDRIS
 -HENOK

Project Number **01**
 6/15/2018 **01.05**



1 SECOND FLOOR PLAN
 Scale: 1:200



1 THIRD FLOOR PLAN
Scale:1:200

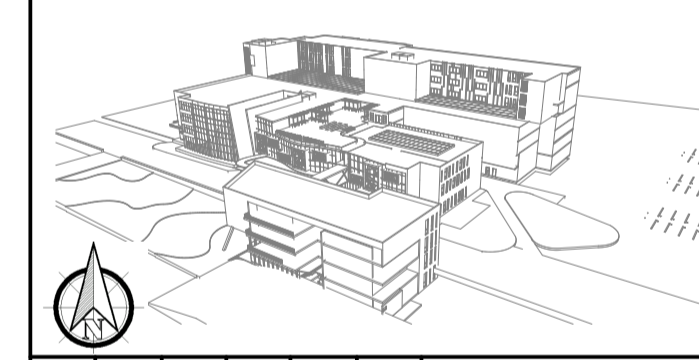
General Description

Level 3


The board-certified pediatric sports medicine specialists. The Sports Medicine Program offers a clinic, lab and state-of-the-art gym for testing, diagnosing and treating all types of injuries and conditions that affect a young athlete's sports performance. The Program also includes a surgery center for minimally invasive sports medicine surgical procedures. The physical therapy gym will also include an outdoor turf field for sport-specific functional training.



Legend



E A A K S

Project
HOSPITAL
(Pidatric) 

Drawing Title
THIRD FLOOR PLAN



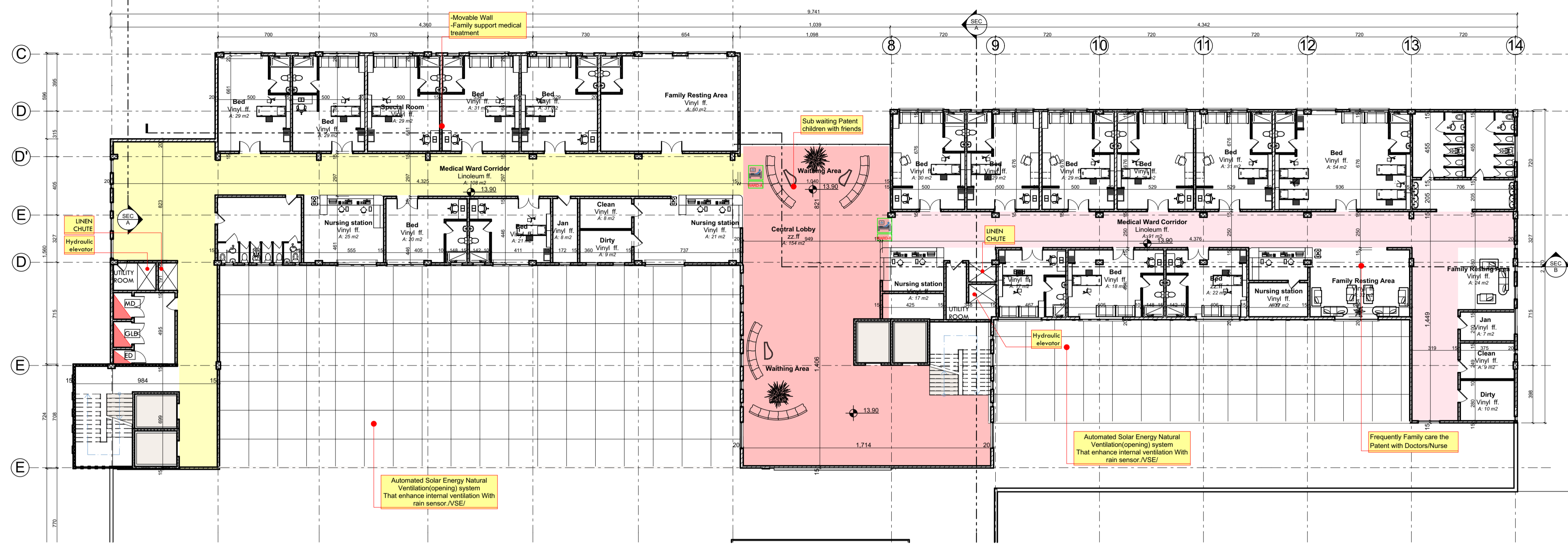
Design By-
Abel Kefay UUS5601E
Instructor
-IDRIS
-HENOK

Project Number 01
6/15/2018 **01.06**

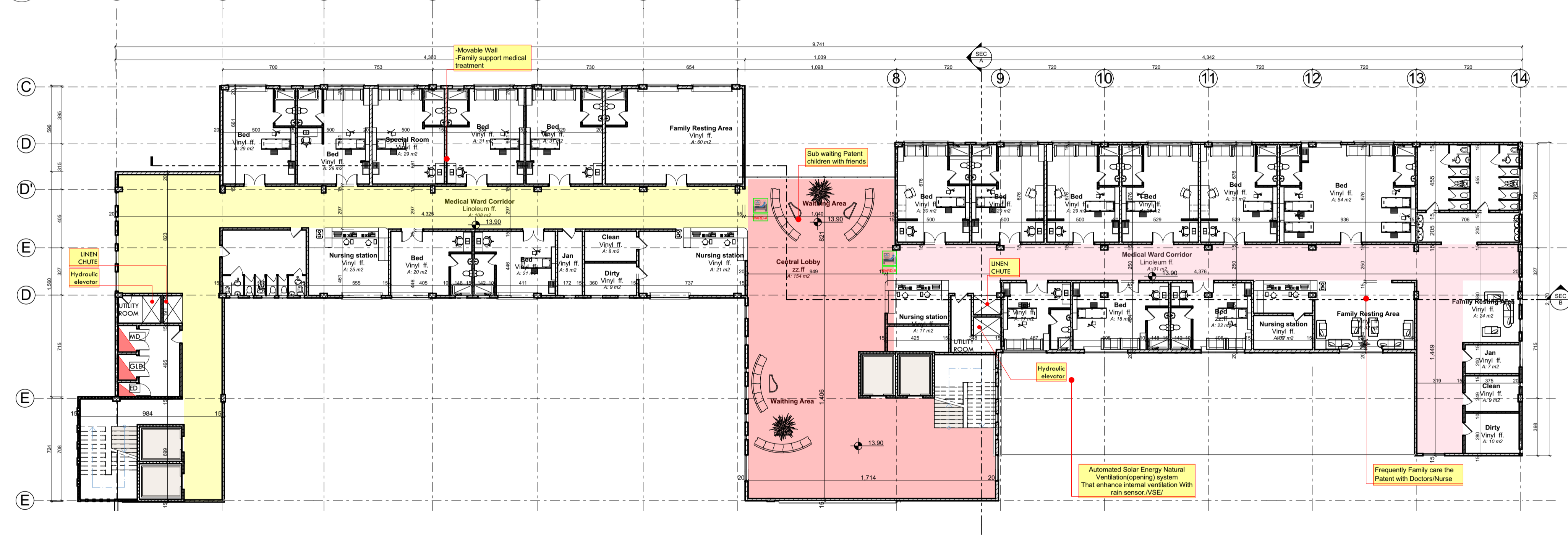
General Description

Level 4

The fourth floor is the top level of the hospital, with floor-to-ceiling windows as you exit the elevator. In addition to playful purple dragonflies on the walls, you'll see views as you make your way to the services on level 4-6 including an inpatient ward unit.

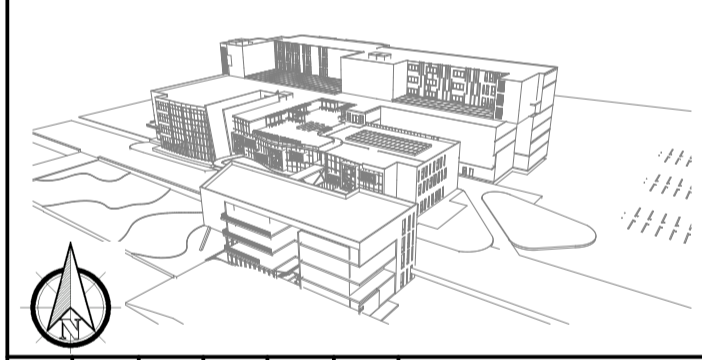


1 FORTH FLOOR PLAN




1 5th-6th FLOOR PLAN

Legend



E A A K S

Project
HOSPITAL
 (Pidatric) 

Drawing Title
FORTH FLOOR PLAN, 3D Views, 5th-6th FLOOR PLAN



Design By-
 Abel Kefay UUS5601E
 Instructor
 -IDRIS
 -HENOK

Project Number 01
 6/15/2018 **01.07**